

**DESIGN INPUTS**  
 HIGHWAY CATEGORY.....CONVENTIONAL HIGHWAY-URBAN ARTERIAL-TROUGHWAY  
 POSTED SPEED ADVISORY.....45 MPH  
 AVERAGE DAILY TRAFFIC.....18,900 VEHICLES PER DAY (TRAFFIC IMPACT STUDY  
 STOPPING SIGHT DISTANCE.....400'  
 CORNER SIGHT DISTANCE.....495'  
 DESIGN VEHICLE.....STAA

**DESIGN EXCEPTIONS FROM THE 6TH EDITION OF THE CALTRANS HIGHWAY DESIGN MANUAL AND REFERENCED STANDARDS:**

**GEOMETRIC CROSS SECTION:**

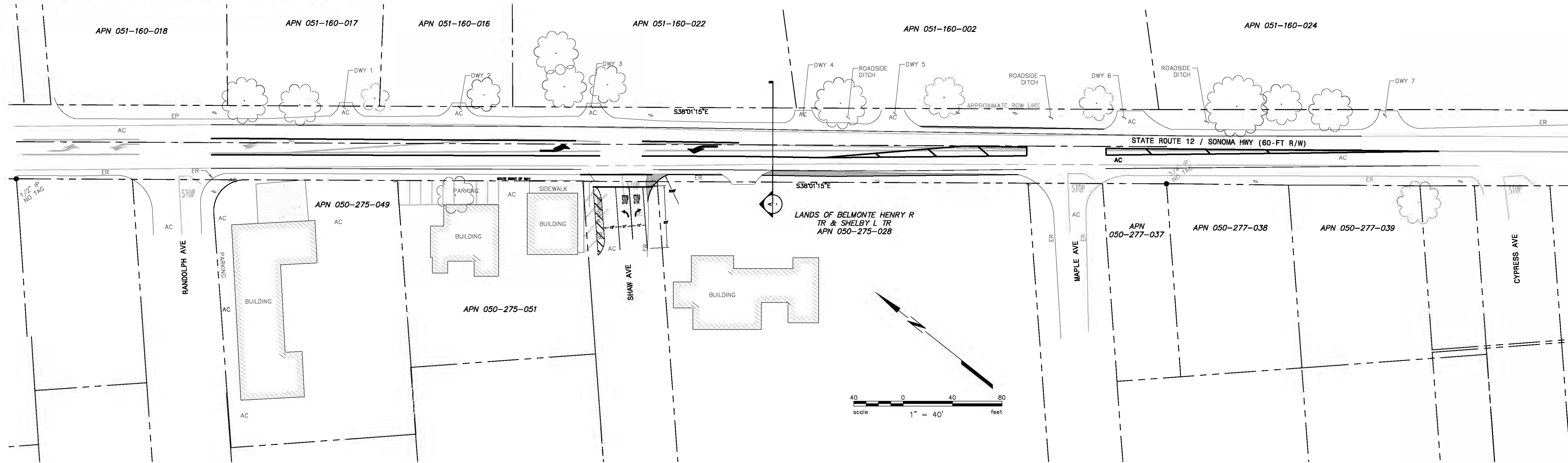
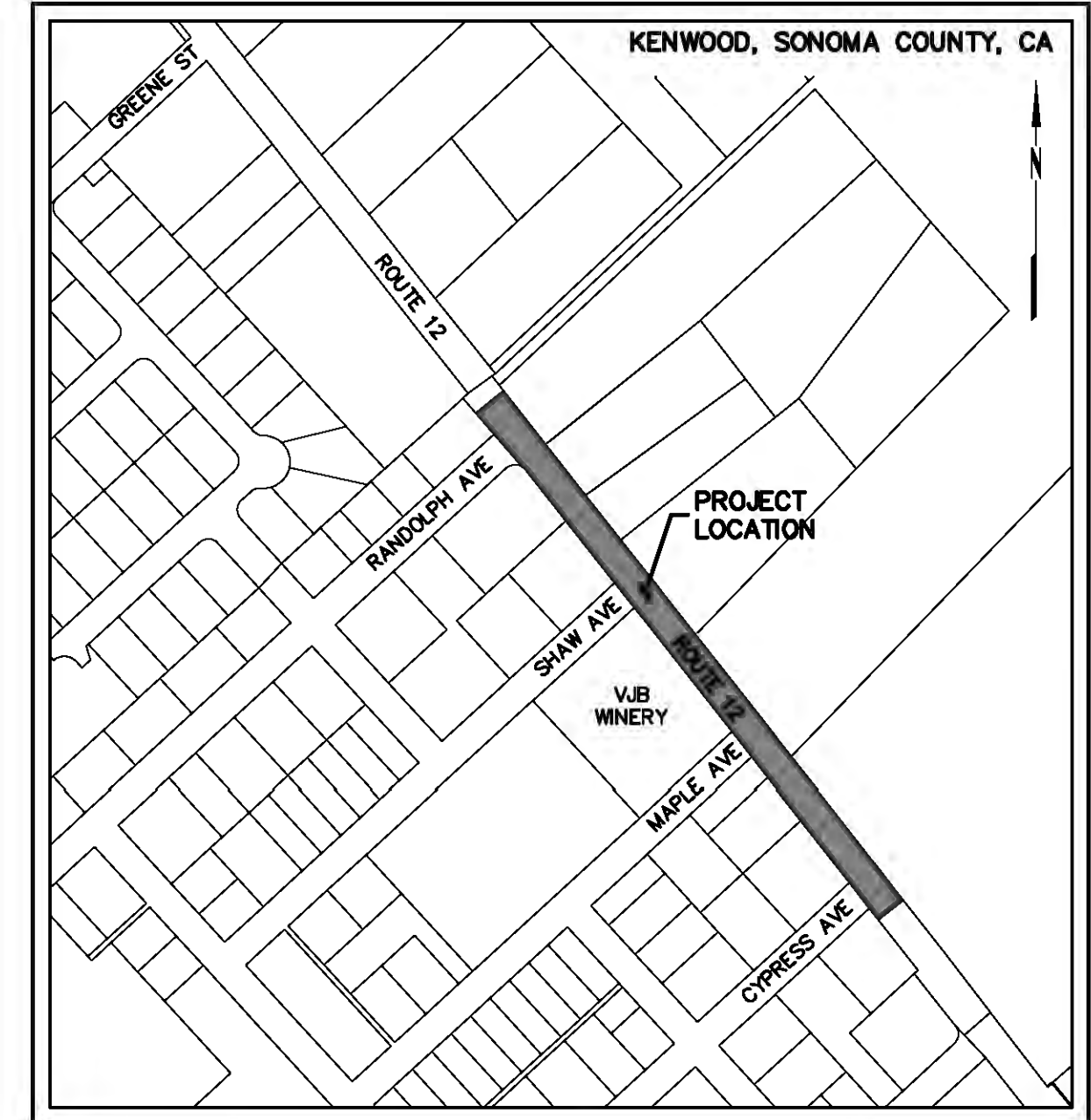
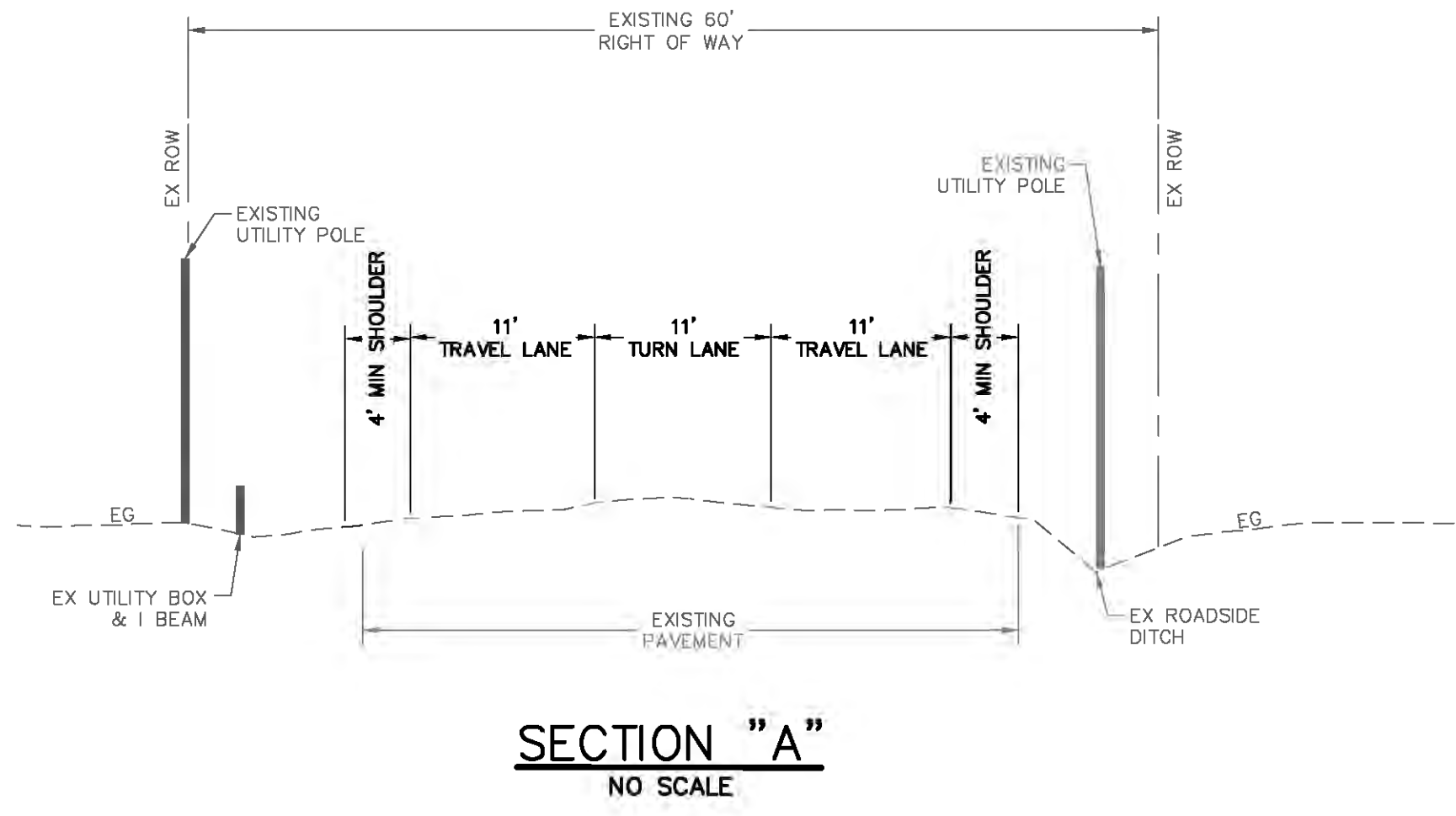
- A MINIMUM PAVED SHOULDER WIDTH OF 4 FEET IS SHOWN DUE TO SIGHT DISTANCE CONSTRAINTS AND EXISTING OBSTRUCTIONS SUCH AS UTILITY POLES. UP TO 8 FEET IS REQUIRED BY TABLE 302.1.
- CLEAR RECOVERY ZONES, NOTED BY INDEX 309.1, HAVE NOT BEEN PROVIDED DUE TO LIMITED RIGHT OF WAY.
- A CLEARANCE OF 10 FEET BETWEEN THE RIGHT OF WAY LINES AND TOE OF FILL SLOPES CAN NOT BE ACHIEVED AS REQUIRED BY INDEX 304.2 DUE TO THE EXISTING CONSTRAINTS SUCH AS UTILITY POLES, EXISTING GEOMETRY, TREES, ROADSIDE DITCHES AND RIGHT OF WAY LIMITATIONS.
- A MINIMUM HORIZONTAL CLEARANCE OF 8' FROM THE EXISTING UTILITY POLE AT THE FRONTAGE OF APN 051-160-022 TO THE PROPOSED EDGE OF TRAVEL WAY CAN NOT BE ACHIEVED AS REQUIRED BY INDEX 309.1.

**CHANNELIZATION:**

- MINIMUM SIGHT DISTANCE BETWEEN EXISTING DRIVEWAYS 1, 2, 3, 4 AND 5, AND HIGHWAY 12 COULD NOT BE ACHIEVED TO MEET THE REQUIREMENTS BY INDEX 405.1 DUE TO THE OBSTRUCTION OF THE EXISTING TREES AND UTILITY POLES.
- THE MINIMUM SIGHT DISTANCE BETWEEN SHAW AVE AND HIGHWAY 12 COULD NOT BE ACHIEVED TO MEET THE REQUIREMENTS BY INDEX 405.1 DUE TO REDUCTION OF DISTANCE BETWEEN STOP LIMIT LINE AND EASTBOUND TRAVEL LANE.
- THE INTERSECTION BETWEEN SHAW AVE AND HIGHWAY 12 DO NOT MEET THE MINIMUM REQUIREMENTS OF FIGURE 405.7 WITH A 50' CURVE RADIUS DUE TO THE RIGHT OF WAY LIMITATION AND EXISTING FEATURES.
- A MINIMUM LANE WIDTH OF 12 FEET CANNOT BE ACHIEVED TO MEET THE REQUIREMENTS OF INDEX 301.1 FOR CONVENTIONAL STATE HIGHWAYS WITH POSTED SPEED MORE THAN 40 MILES PER HOUR AND HIGH TRUCK VOLUME. 11 FOOT WIDE LANES ARE PROPOSED IN THIS CONCEPT.

**MAPPING NOTES:**

EXISTING FEATURES SHOWN HEREON WERE OBTAINED FROM CALTRANS RECORD DRAWINGS SONOMA COUNTY GIS DATA AND A FIELD SURVEY CONDUCTED BY BKF ENGINEERS ON OCTOBER 22, 2019.



- ABBREVIATIONS**
- AC ASPHALT CONCRETE
  - APN ASSESSOR'S PARCEL NUMBER
  - DWY DRIVEWAY
  - EG EXISTING GROUND
  - EP EDGE OF PAVEMENT
  - ER EDGE OF ROAD
  - FT FOOT
  - HDM CALTRANS HIGHWAY DESIGN MANUAL
  - HWY HIGHWAY
  - IB 'I' BEAM
  - IP IRON PIPE
  - EX EXISTING
  - MIN MINIMUM
  - MPH MILE PER HOUR
  - NB NORTHBOUND
  - PUE PUBLIC UTILITY EASEMENT
  - ROW RIGHT OF WAY
  - SB SOUTHBOUND
  - TYP TYPICAL
  - UB UTILITY BOX

- SYMBOLS & LEGEND**
- | EXISTING                         | PROPOSED                           |
|----------------------------------|------------------------------------|
| (Symbol: Circle with cross)      | UTILITY POLE                       |
| (Symbol: Square)                 | CATCH BASIN                        |
| (Symbol: Circle)                 | TREE                               |
| (Symbol: Dashed line)            | APPROXIMATE ASSESSOR'S PARCEL LINE |
| (Symbol: Dashed line with cross) | OVERHEAD UTILITY LINE              |
| (Symbol: Stippled area)          | CONCRETE                           |
| (Symbol: Solid grey area)        | PAVEMENT                           |

**PRELIMINARY**  
 FOR STUDY PURPOSES ONLY  
 DATE: 11-16-2020  
 ERIC D. WADE C 81862

**LEFT-TURN LANE CONCEPTUAL EXHIBIT**

VJB WINERY  
 SONO12623 / SON-12-26.68-26.75  
 66 SHAW AVE, KENWOOD, CA (APN 050-275-051)  
 NOVEMBER 2020



Plot Nov 16, 2020 at 4:05pm  
 180082-SITE-ROW.dwg C:\BKF\180082