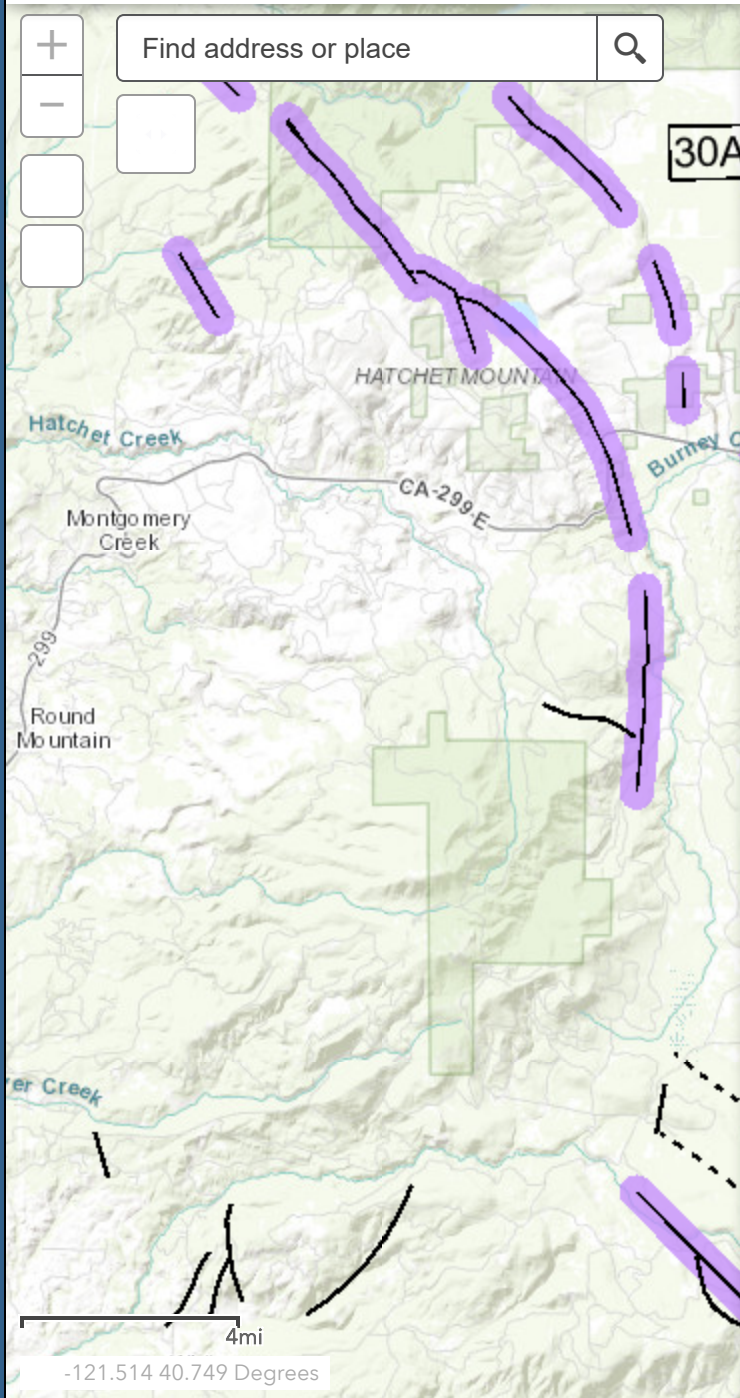


Fault Activity Map of California (2010)

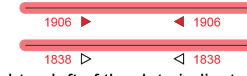
California Ge



Explanation

FAULT CLASSIFICATION COLOR CODE
(Indicating Recency of Movement)

Fault along which historic (last 200 years) displacement has occurred.



A triangle to the right or left of the date indicates termination point of observed surface displacement. Solid red triangle indicates known location of rupture termination point. Open black triangle indicates uncertain or estimated location of rupture termination point.



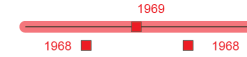
Date bracketed by triangles indicates local fault break.



No triangle by date indicates an intermediate point along faultbreak.



Fault that exhibits fault creep slippage. Hachures indicate linear extent of fault creep. Annotation (creep with leader) indicates representative locations where fault creep has been observed and recorded.



Square on fault indicates where fault creep slippage has occurred that has been triggered by an earthquake on some other fault. Date of causative earthquake indicated. Squares to right and left of date indicate terminal points between which triggered creep slippage has occurred (creep either continuous or intermittent between these end points).



Holocene fault displacement (during past 11,700 years) without historic record.



Late Quaternary fault displacement (during past 700,000 years).



Quaternary fault (age undifferentiated).