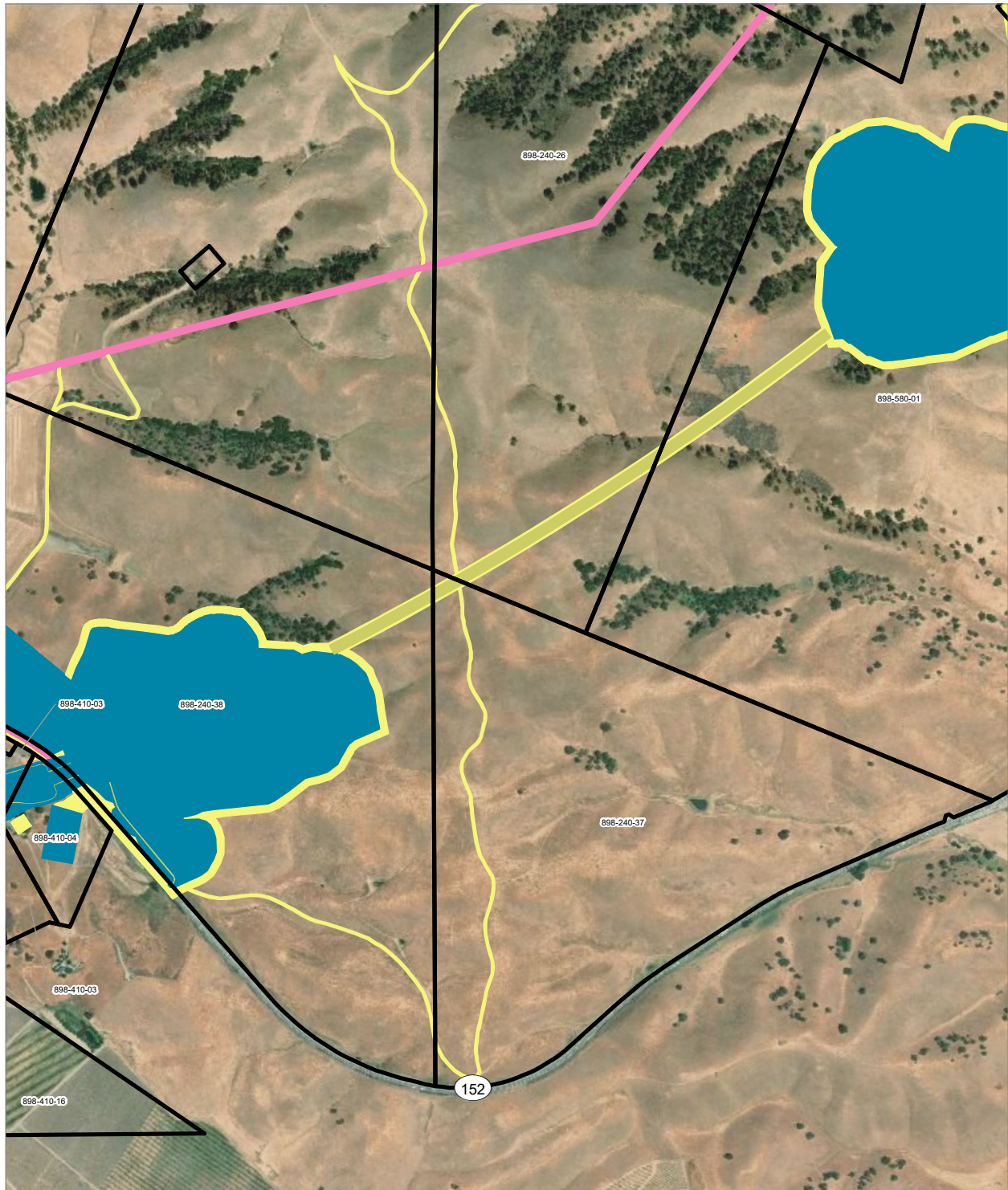
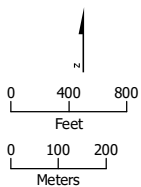


APPENDIX 3.1-A: PARCELS WITHIN THE HSR PROJECT FOOTPRINT (Alternative 2, Part 1)



PRELIMINARY DRAFT/SUBJECT TO CHANGE - HSR ALIGNMENT IS NOT DETERMINED
 SOURCE: ESRI, 2019; San Jose County, 2016; San Benito County, 2016; Merced Counties, 2016.



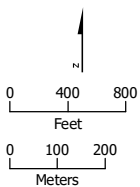
- HSR Right-of-Way
- Permanent Utility Easement
- HSR Permanent Easement
- Temporary Construction Easement
- Parcel (APN Displayed)

Alternative 2





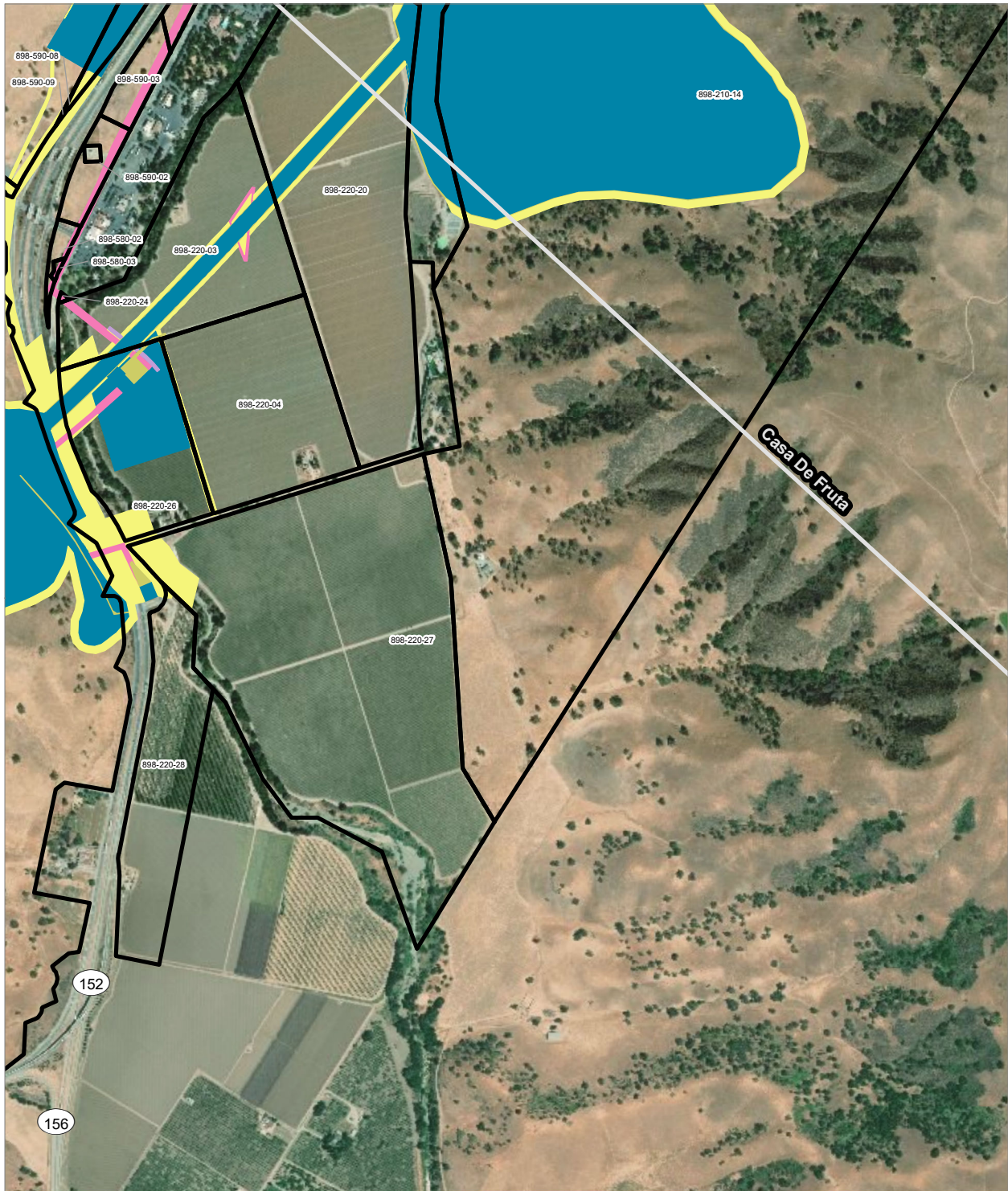
PRELIMINARY DRAFT/SUBJECT TO CHANGE - HSR ALIGNMENT IS NOT DETERMINED
 SOURCE: ESRI, 2019; San Jose County, 2016; San Benito County, 2016; Merced Counties, 2016.



- Permanent Utility Easement
- Temporary Construction Easement
- Parcel (APN Displayed)

Alternative 2





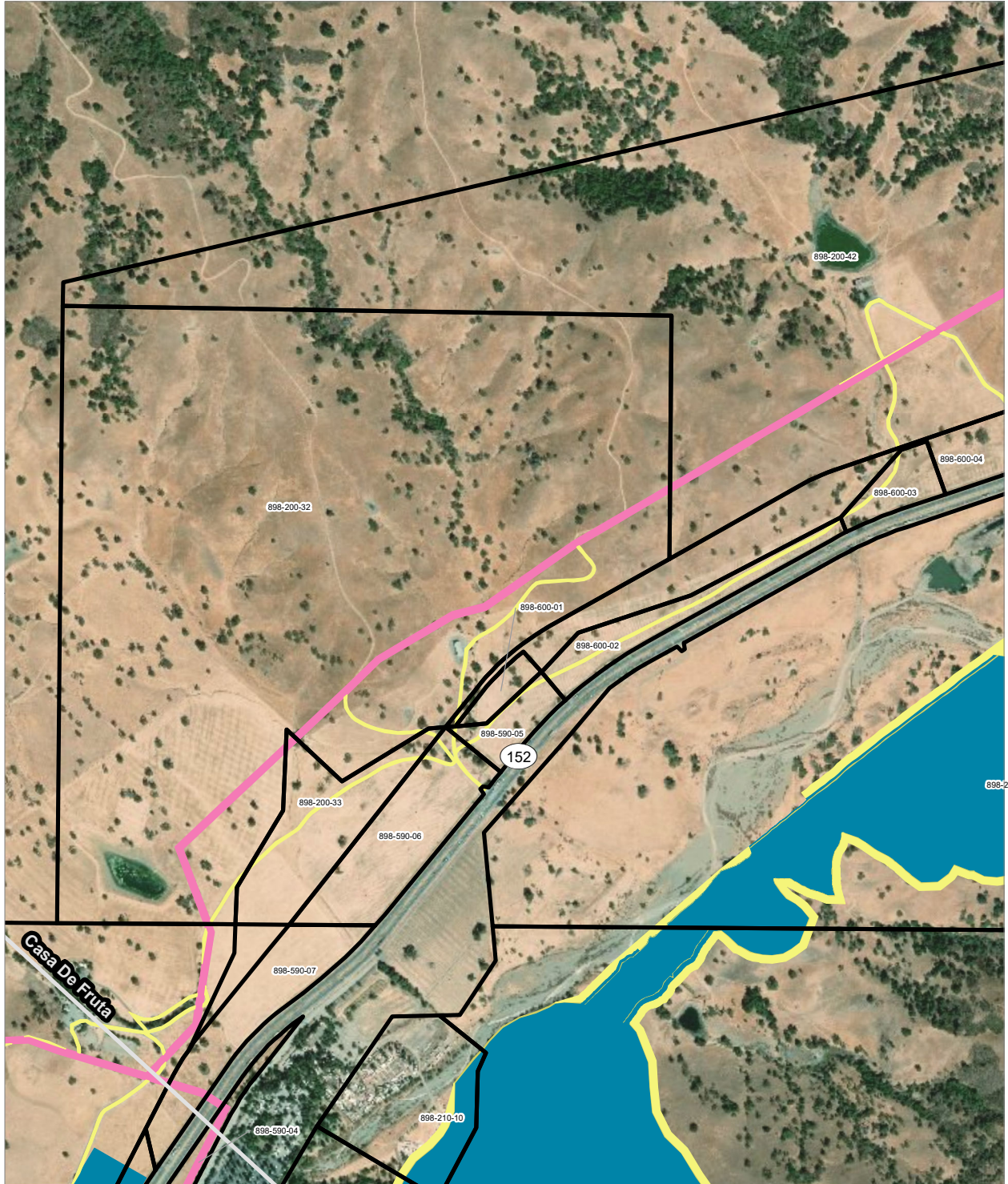
PRELIMINARY DRAFT/SUBJECT TO CHANGE - HSR ALIGNMENT IS NOT DETERMINED
 SOURCE: ESRI, 2019; San Jose County, 2016; San Benito County, 2016; Merced Counties, 2016.



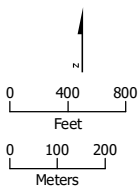
- HSR Right-of-Way
- Temporary Construction Easement
- HSR Permanent Easement
- Temporary Utility Easement
- Permanent Utility Easement
- Non-Viable Remnant Parcel
- Parcel (APN Displayed)

Alternative 2





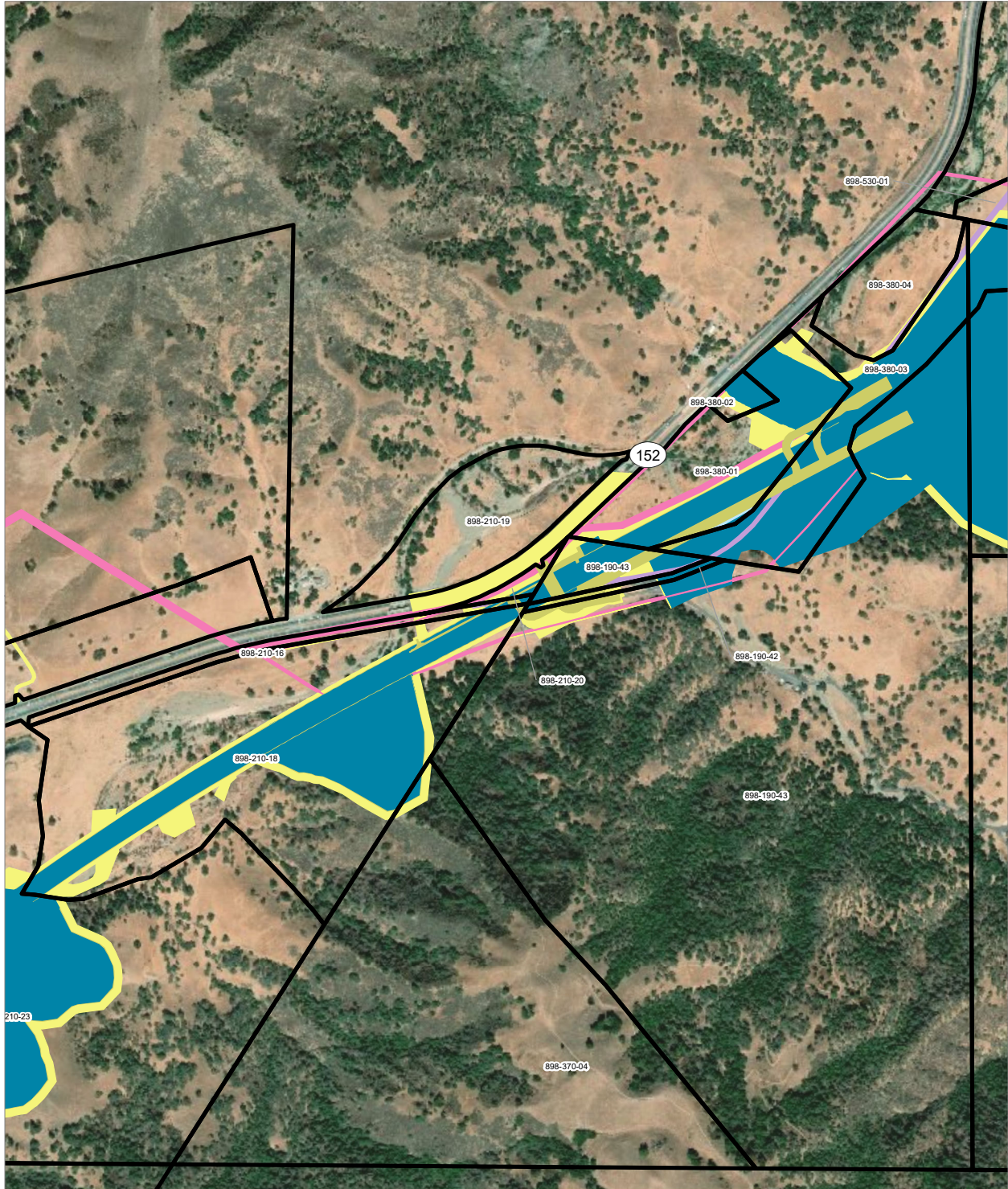
PRELIMINARY DRAFT/SUBJECT TO CHANGE - HSR ALIGNMENT IS NOT DETERMINED
 SOURCE: ESRI, 2019; San Jose County, 2016; San Benito County, 2016; Merced Counties, 2016.



- HSR Right-of-Way
- HSR Permanent Easement
- Permanent Utility Easement
- Temporary Construction Easement
- Parcel (APN Displayed)



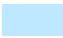




Alternative 2





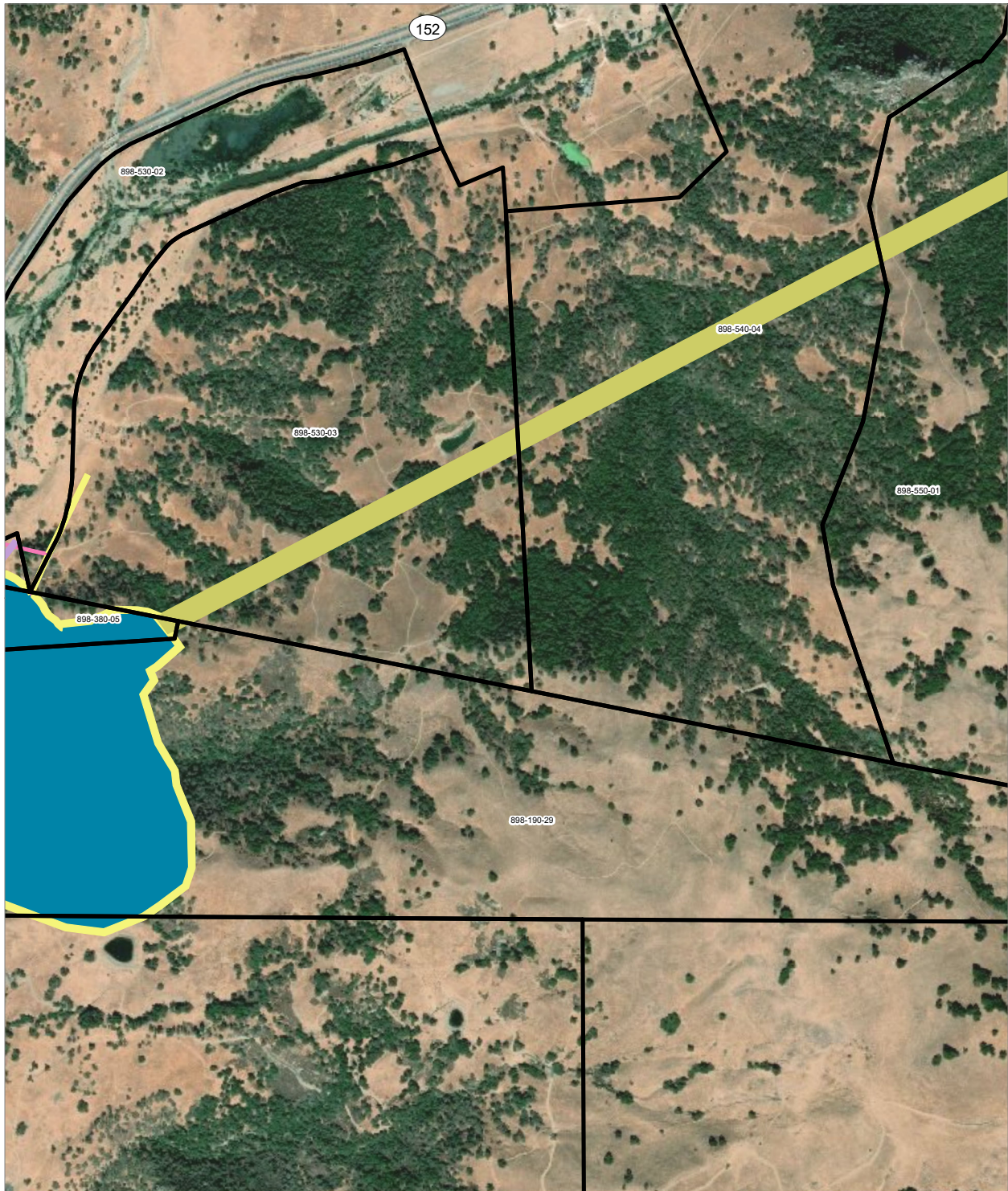
PRELIMINARY DRAFT/SUBJECT TO CHANGE - HSR ALIGNMENT IS NOT DETERMINED
 SOURCE: ESRI, 2019; San Jose County, 2016; San Benito County, 2016; Merced Counties, 2016.



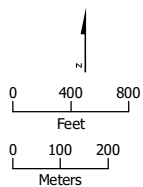
- | | |
|--|---|
|  HSR Right-of-Way |  Permanent Utility Easement |
|  Other Right-of-Way |  Temporary Construction Easement |
|  HSR Permanent Easement |  Temporary Utility Easement |
|  Parcel (APN Displayed) | |

Alternative 2





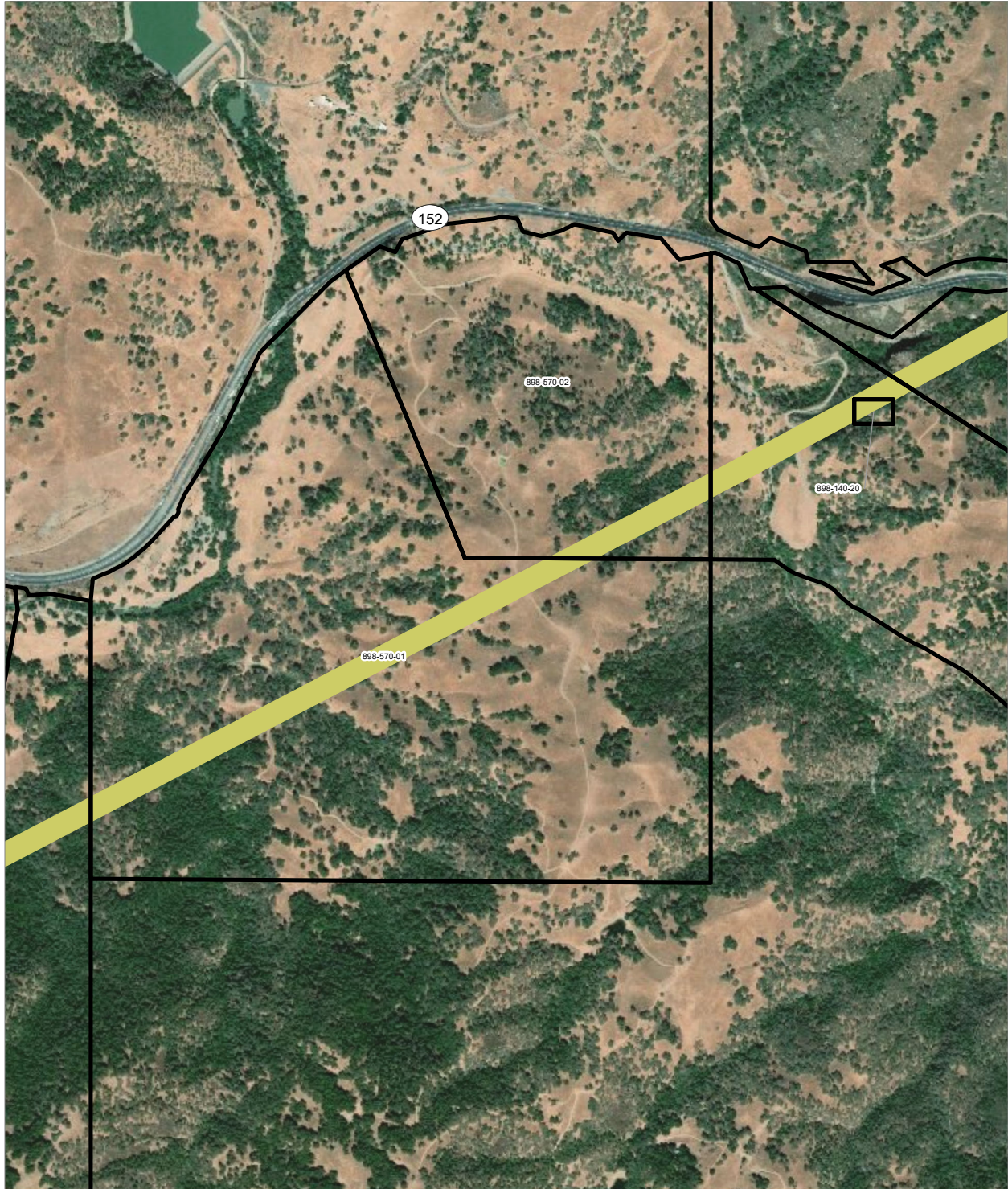
PRELIMINARY DRAFT/SUBJECT TO CHANGE - HSR ALIGNMENT IS NOT DETERMINED
 SOURCE: ESRI, 2019; San Jose County, 2016; San Benito County, 2016; Merced Counties, 2016.



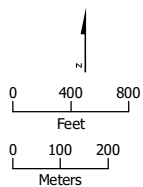
- | | |
|--|---|
|  HSR Right-of-Way |  Temporary Construction Easement |
|  HSR Permanent Easement |  Temporary Utility Easement |
|  Permanent Utility Easement |  Parcel (APN Displayed) |

Alternative 2





PRELIMINARY DRAFT/SUBJECT TO CHANGE - HSR ALIGNMENT IS NOT DETERMINED
 SOURCE: ESRI, 2019; San Jose County, 2016; San Benito County, 2016; Merced Counties, 2016.



- HSR Permanent Easement
- Parcel (APN Displayed)

Alternative 2





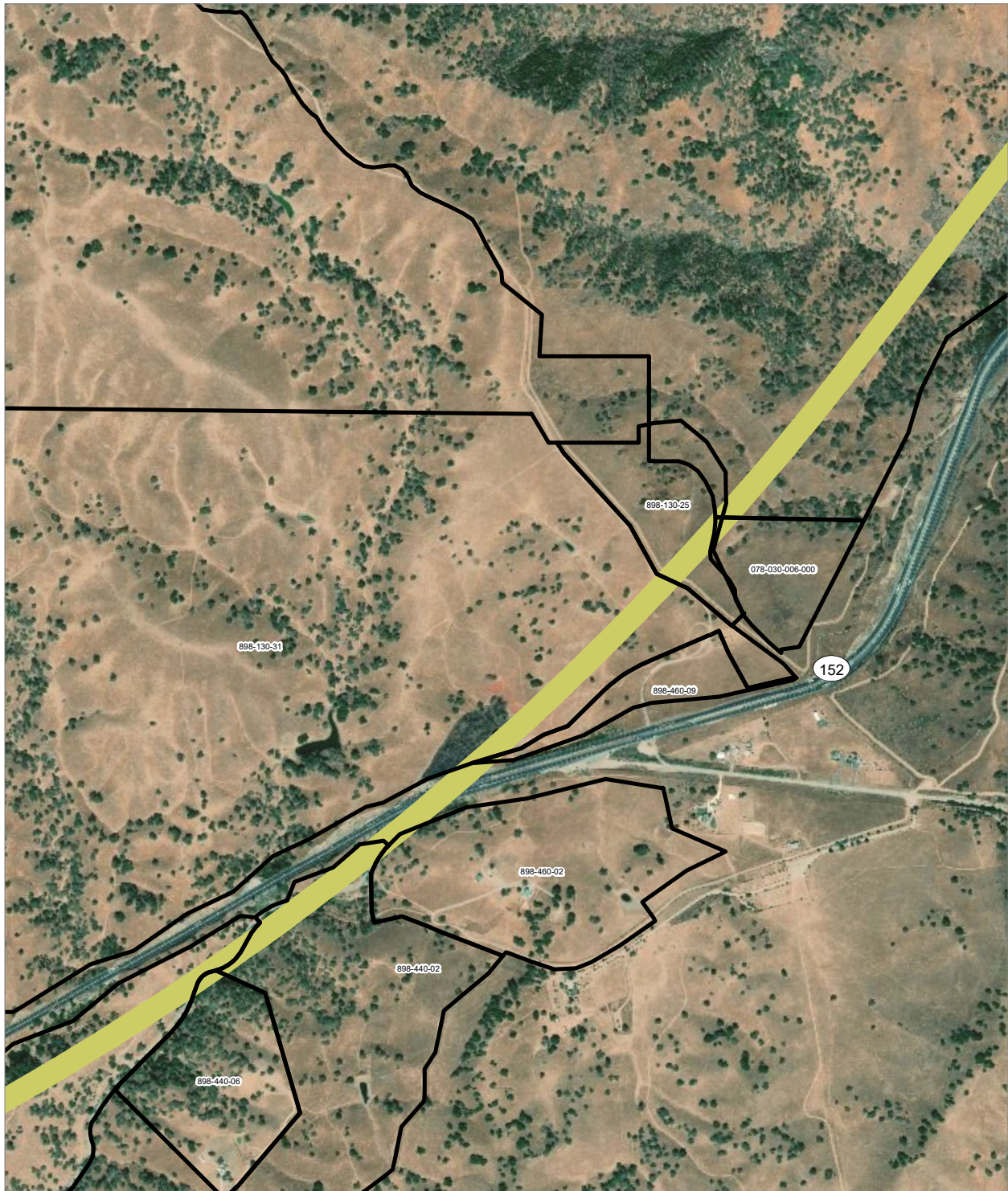
PRELIMINARY DRAFT/SUBJECT TO CHANGE - HSR ALIGNMENT IS NOT DETERMINED
 SOURCE: ESRI, 2019; San Jose County, 2016; San Benito County, 2016; Merced Counties, 2016.



- HSR Permanent Easement
- Parcel (APN Displayed)

Alternative 2





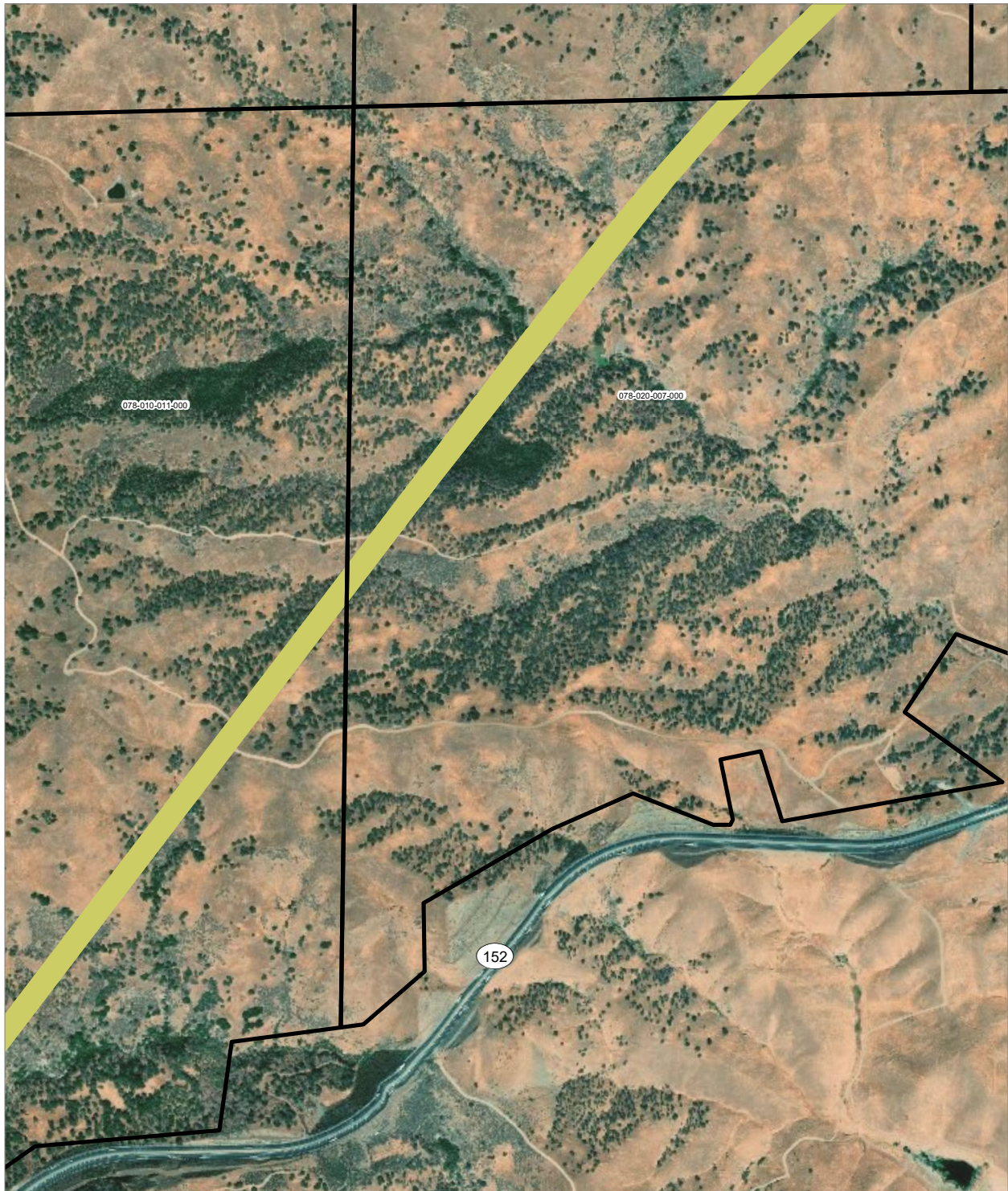
PRELIMINARY DRAFT/SUBJECT TO CHANGE - HSR ALIGNMENT IS NOT DETERMINED
 SOURCE: ESRI, 2019; San Jose County, 2016; San Benito County, 2016; Merced Counties, 2016.



- HSR Permanent Easement
- Parcel (APN Displayed)

Alternative 2





PRELIMINARY DRAFT/SUBJECT TO CHANGE - HSR ALIGNMENT IS NOT DETERMINED
 SOURCE: ESRI, 2019; San Jose County, 2016; San Benito County, 2016; Merced Counties, 2016.



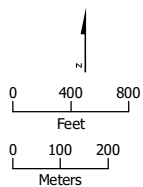
- HSR Permanent Easement
- Parcel (APN Displayed)

Alternative 2





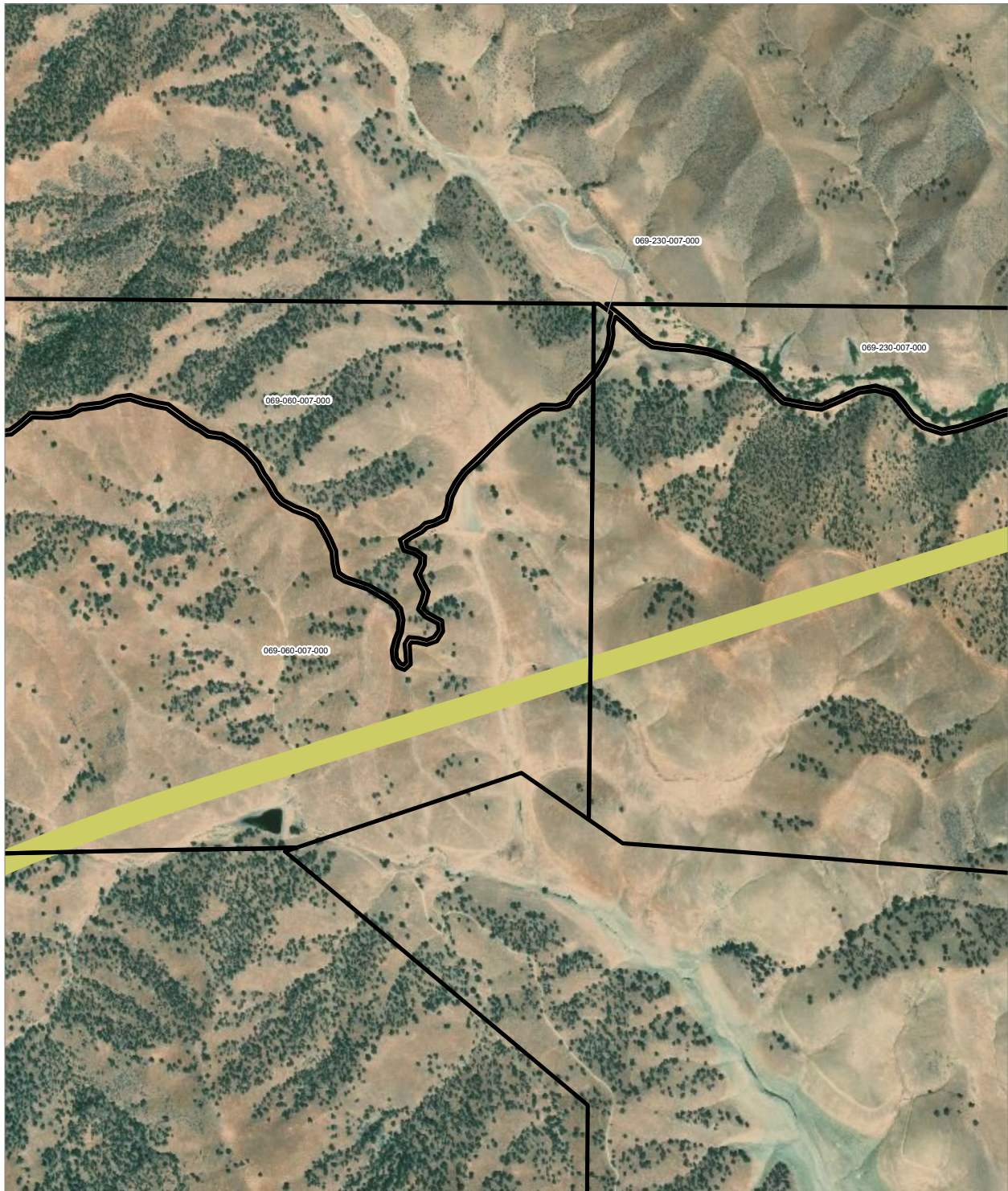
PRELIMINARY DRAFT/SUBJECT TO CHANGE - HSR ALIGNMENT IS NOT DETERMINED
 SOURCE: ESRI, 2019; San Jose County, 2016; San Benito County, 2016; Merced Counties, 2016.



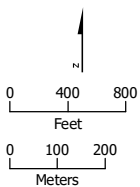
- HSR Permanent Easement
- Parcel (APN Displayed)



Alternative 2





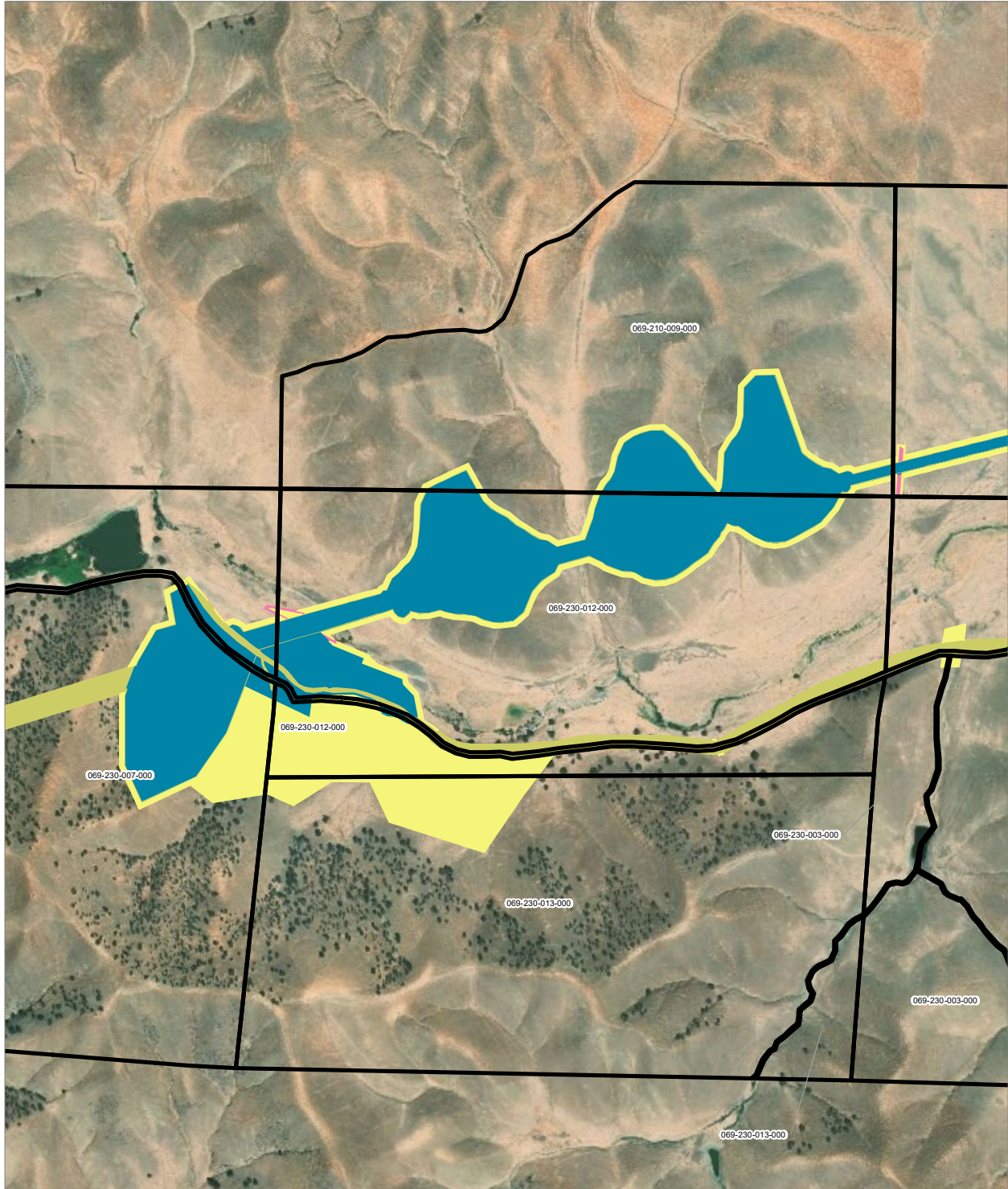
PRELIMINARY DRAFT/SUBJECT TO CHANGE - HSR ALIGNMENT IS NOT DETERMINED
SOURCE: ESRI, 2019; San Jose County, 2016; San Benito County, 2016; Merced Counties, 2016.



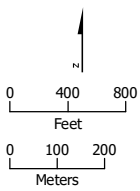
-  HSR Permanent Easement
-  Parcel (APN Displayed)

Alternative 2





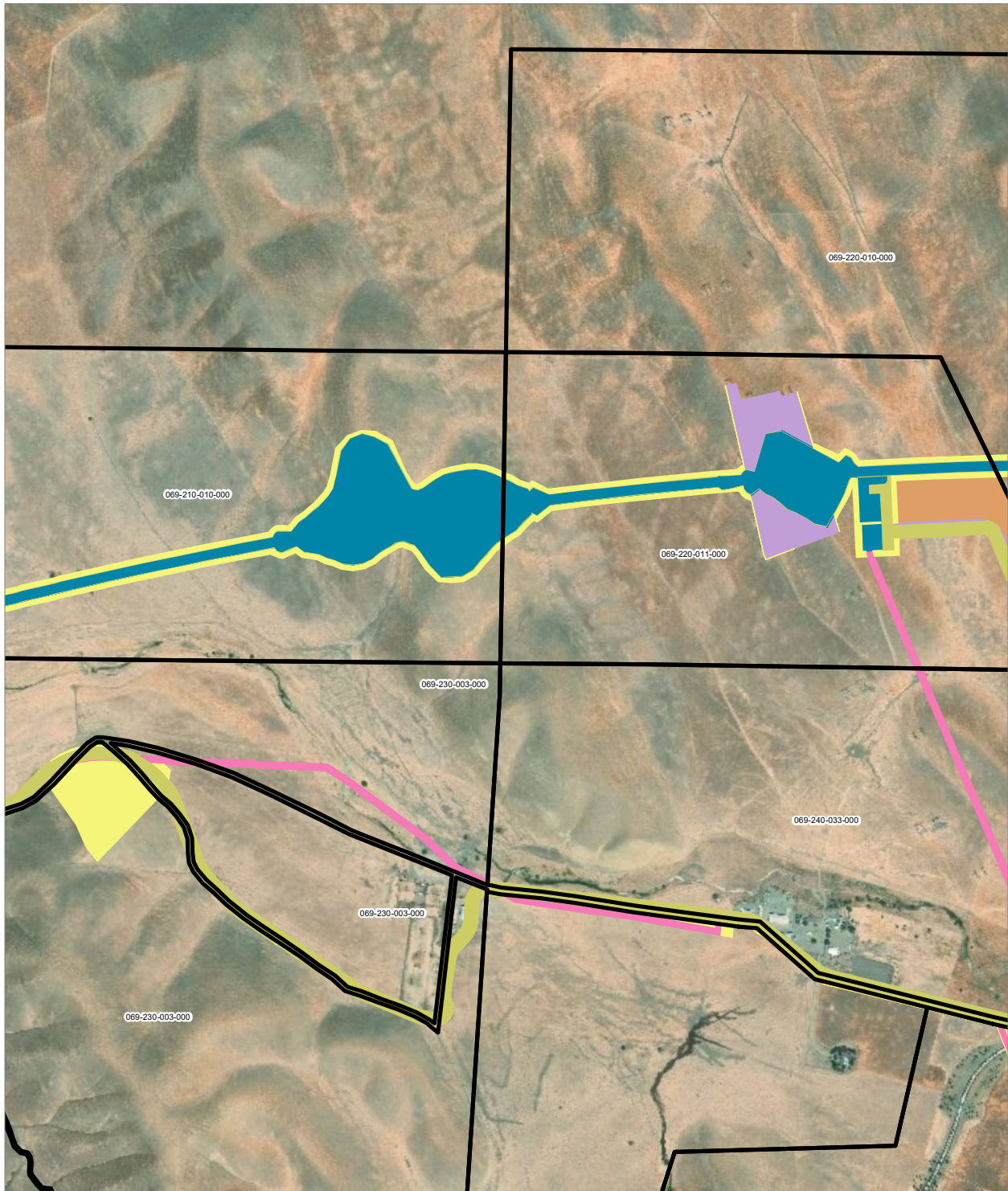
PRELIMINARY DRAFT/SUBJECT TO CHANGE - HSR ALIGNMENT IS NOT DETERMINED
 SOURCE: ESRI, 2019; San Jose County, 2016; San Benito County, 2016; Merced Counties, 2016.



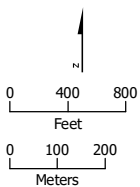
- HSR Right-of-Way
- HSR Permanent Easement
- Permanent Utility Easement
- Temporary Construction Easement
- Parcel (APN Displayed)








Alternative 2





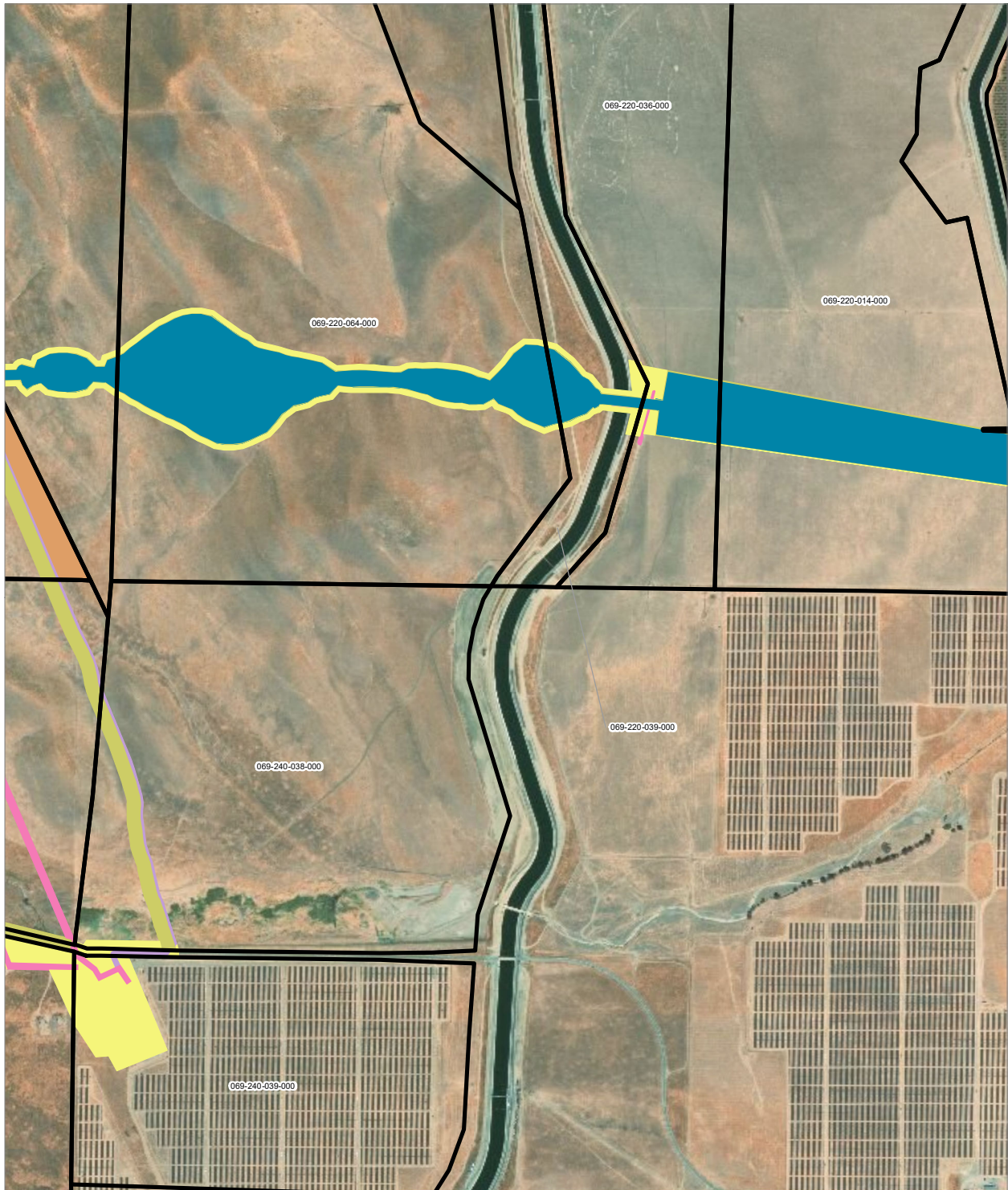
PRELIMINARY DRAFT/SUBJECT TO CHANGE - HSR ALIGNMENT IS NOT DETERMINED
 SOURCE: ESRI, 2019; San Jose County, 2016; San Benito County, 2016; Merced Counties, 2016.



- | | |
|--|---|
|  HSR Right-of-Way |  Temporary Construction Easement |
|  HSR Permanent Easement |  Temporary Utility Easement |
|  Permanent Utility Easement |  Non-Viable Remnant Parcel |
|  Parcel (APN Displayed) | |








Alternative 2





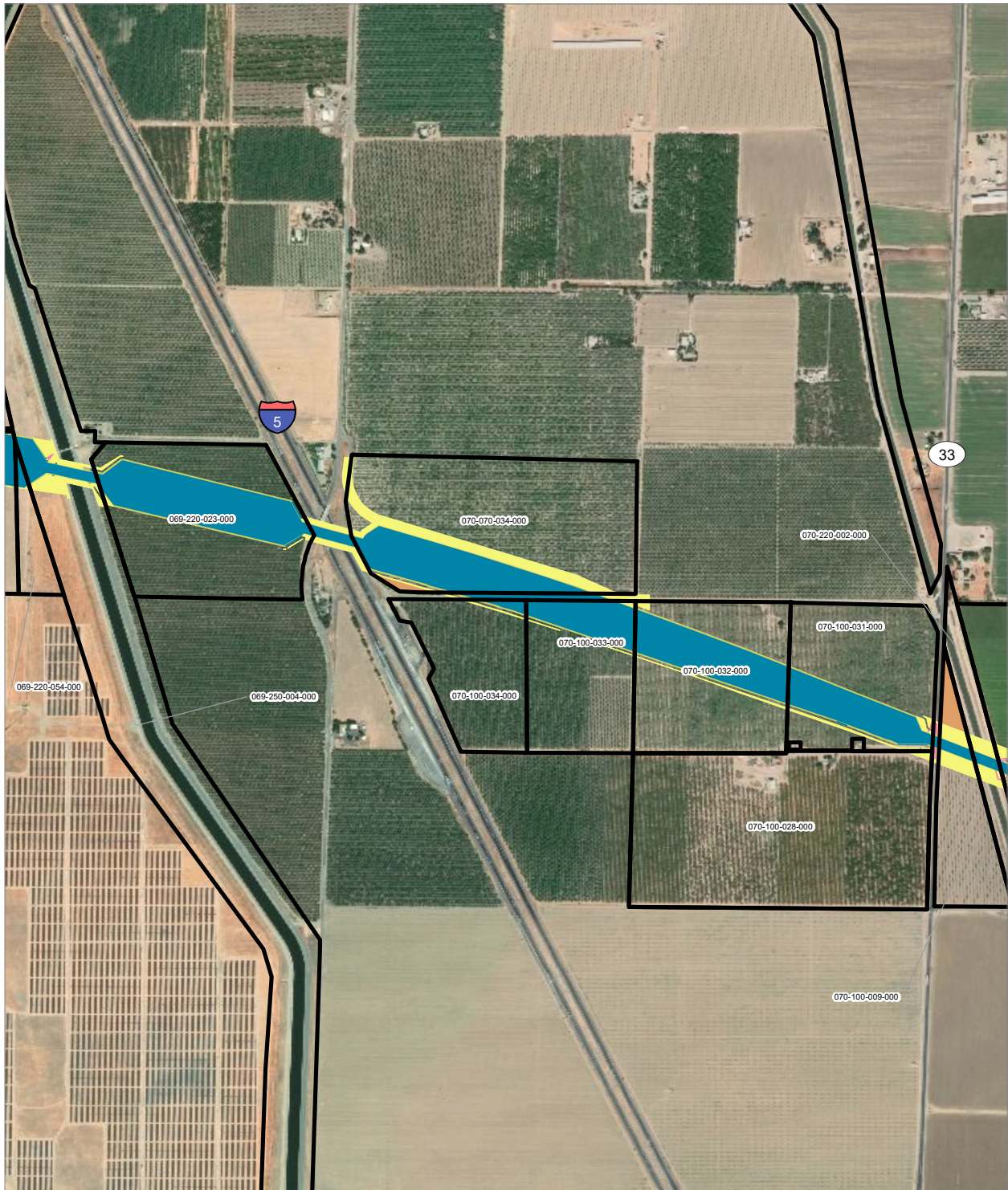
PRELIMINARY DRAFT/SUBJECT TO CHANGE - HSR ALIGNMENT IS NOT DETERMINED
 SOURCE: ESRI, 2019; San Jose County, 2016; San Benito County, 2016; Merced Counties, 2016.



- | | |
|--|---|
|  HSR Right-of-Way |  Temporary Construction Easement |
|  HSR Permanent Easement |  Temporary Utility Easement |
|  Permanent Utility Easement |  Non-Viable Remnant Parcel |
|  Parcel (APN Displayed) | |








Alternative 2





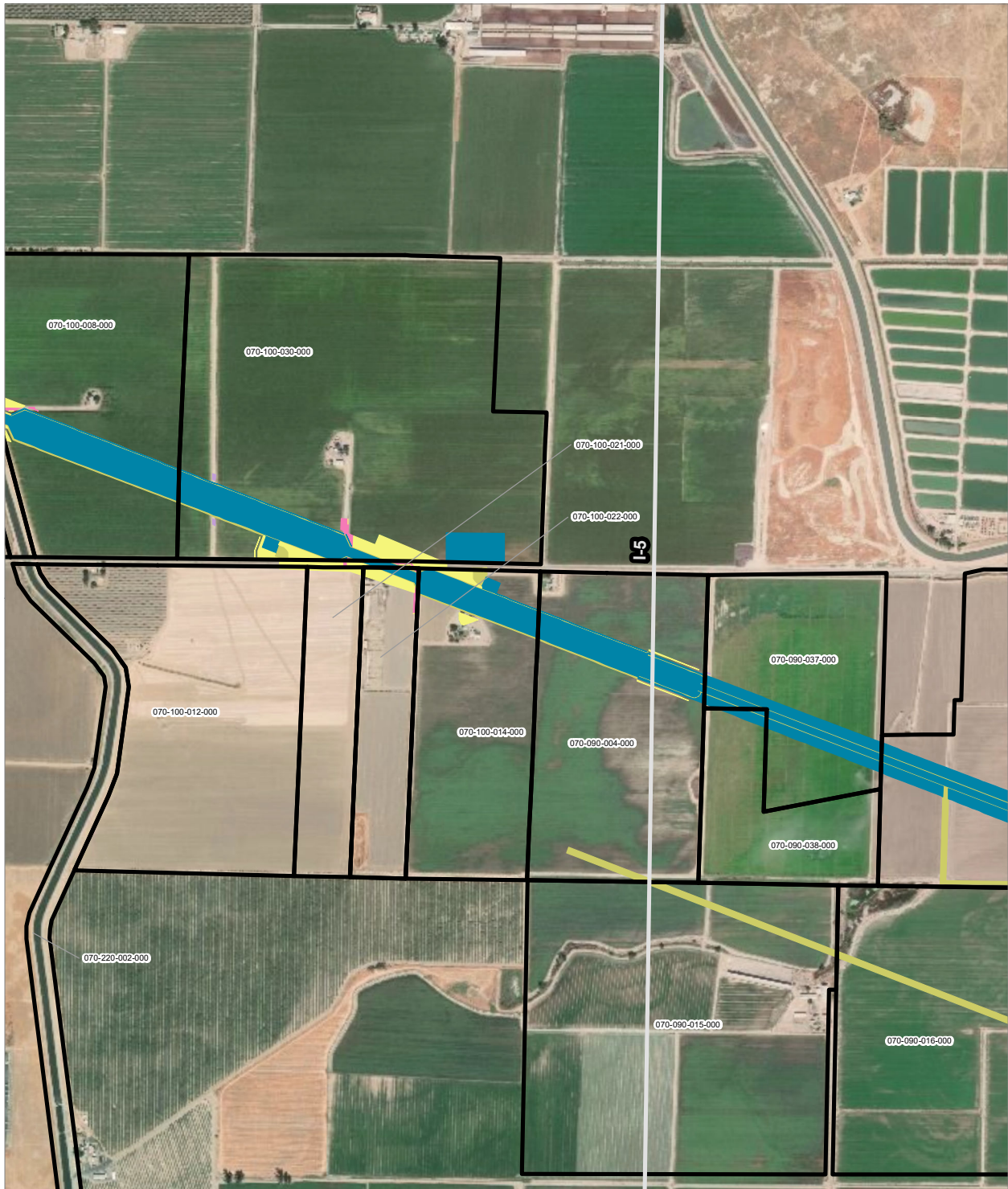
PRELIMINARY DRAFT/SUBJECT TO CHANGE - HSR ALIGNMENT IS NOT DETERMINED
 SOURCE: ESRI, 2019; San Jose County, 2016; San Benito County, 2016; Merced Counties, 2016.



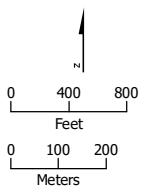
- | | |
|--|---|
|  HSR Right-of-Way |  Temporary Construction Easement |
|  HSR Permanent Easement |  Temporary Utility Easement |
|  Permanent Utility Easement |  Non-Viable Remnant Parcel |
| |  Parcel (APN Displayed) |

Alternative 2





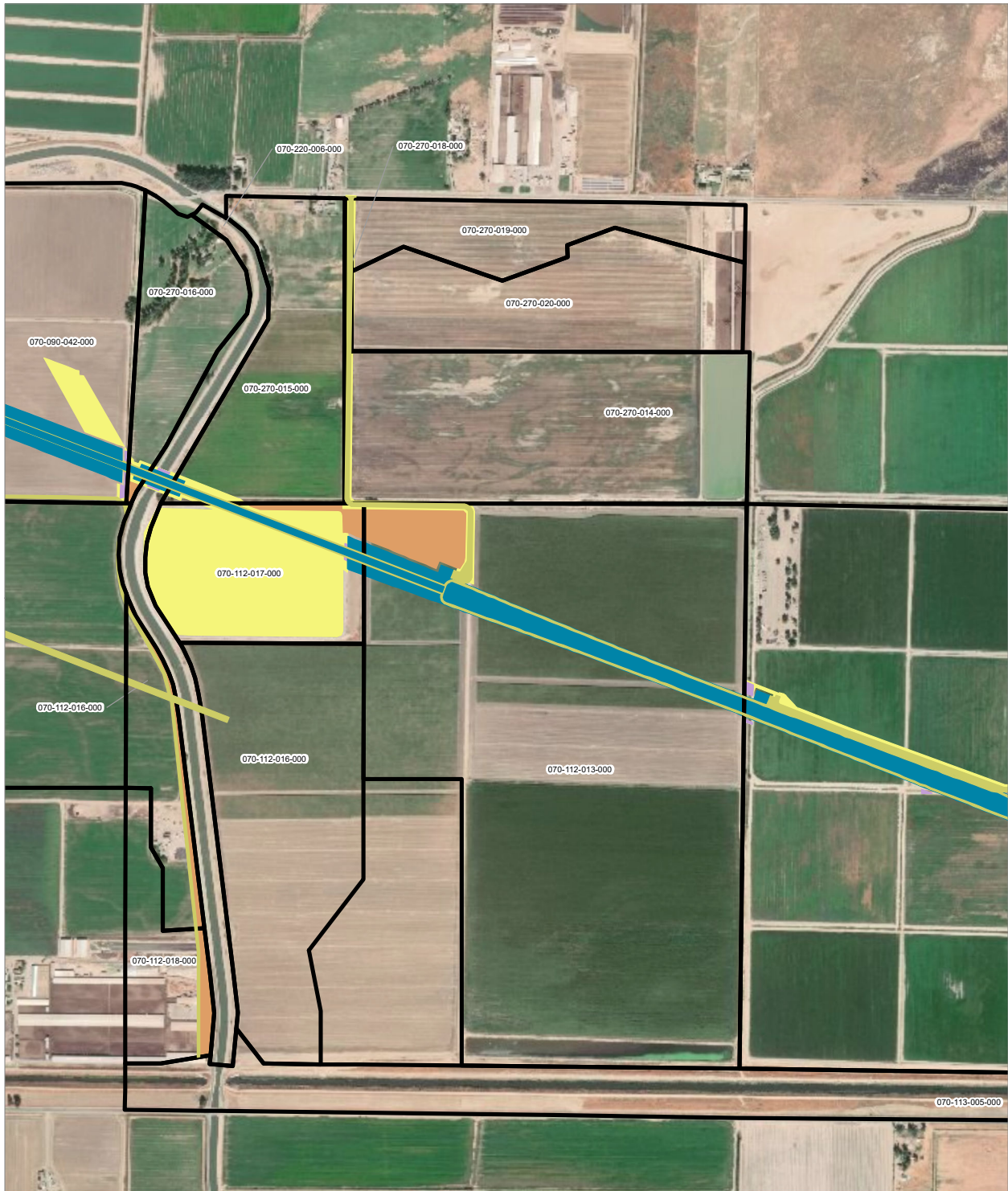
PRELIMINARY DRAFT/SUBJECT TO CHANGE - HSR ALIGNMENT IS NOT DETERMINED
 SOURCE: ESRI, 2019; San Jose County, 2016; San Benito County, 2016; Merced Counties, 2016.



- HSR Right-of-Way
- Temporary Construction Easement
- HSR Permanent Easement
- Temporary Utility Easement
- Permanent Utility Easement
- Non-Viable Remnant Parcel
- Parcel (APN Displayed)

Alternative 2





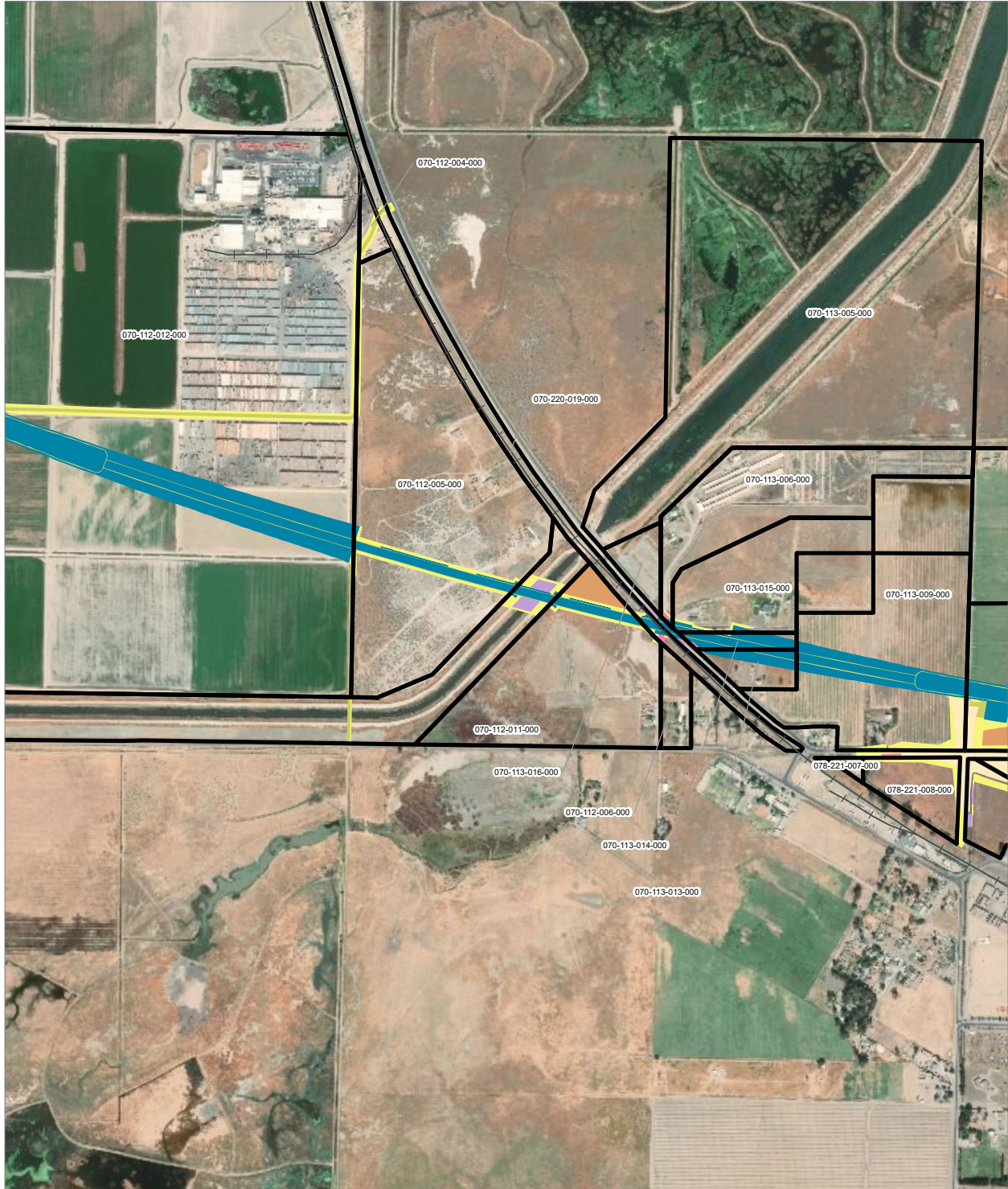
PRELIMINARY DRAFT/SUBJECT TO CHANGE - HSR ALIGNMENT IS NOT DETERMINED
 SOURCE: ESRI, 2019; San Jose County, 2016; San Benito County, 2016; Merced Counties, 2016.



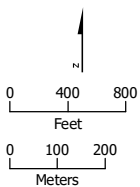
- HSR Right-of-Way
- Temporary Construction Easement
- HSR Permanent Easement
- Temporary Utility Easement
- Permanent Utility Easement
- Non-Viable Remnant Parcel
- Parcel (APN Displayed)









Alternative 2





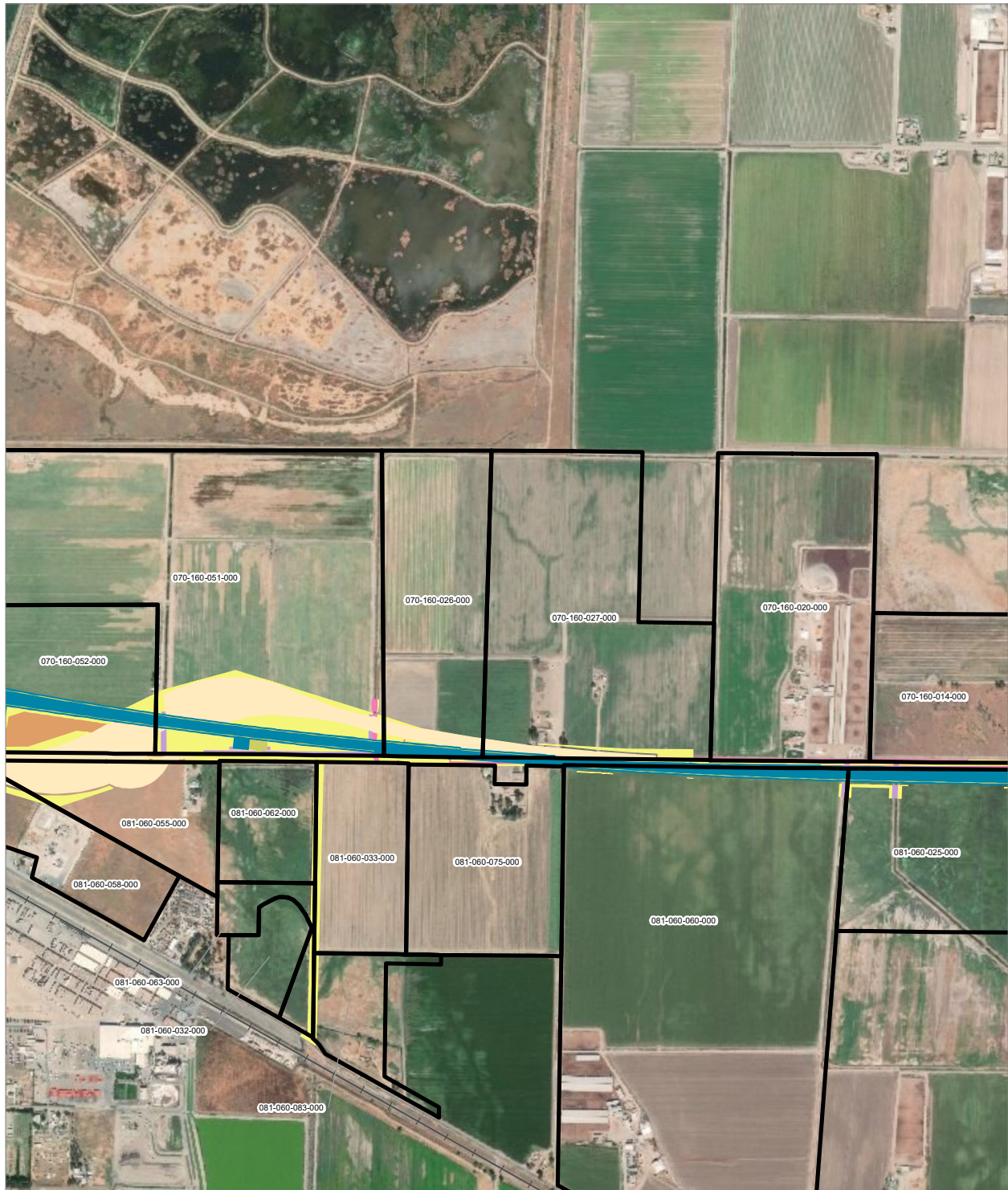
PRELIMINARY DRAFT/SUBJECT TO CHANGE - HSR ALIGNMENT IS NOT DETERMINED
 SOURCE: ESRI, 2019; San Jose County, 2016; San Benito County, 2016; Merced Counties, 2016.



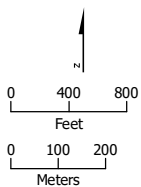
- | | |
|--|---|
|  HSR Right-of-Way |  Temporary Construction Easement |
|  Roadway Right-of-Way |  Temporary Utility Easement |
|  HSR Permanent Easement |  Non-Viable Remnant Parcel |
|  Permanent Utility Easement |  Parcel (APN Displayed) |

Alternative 2





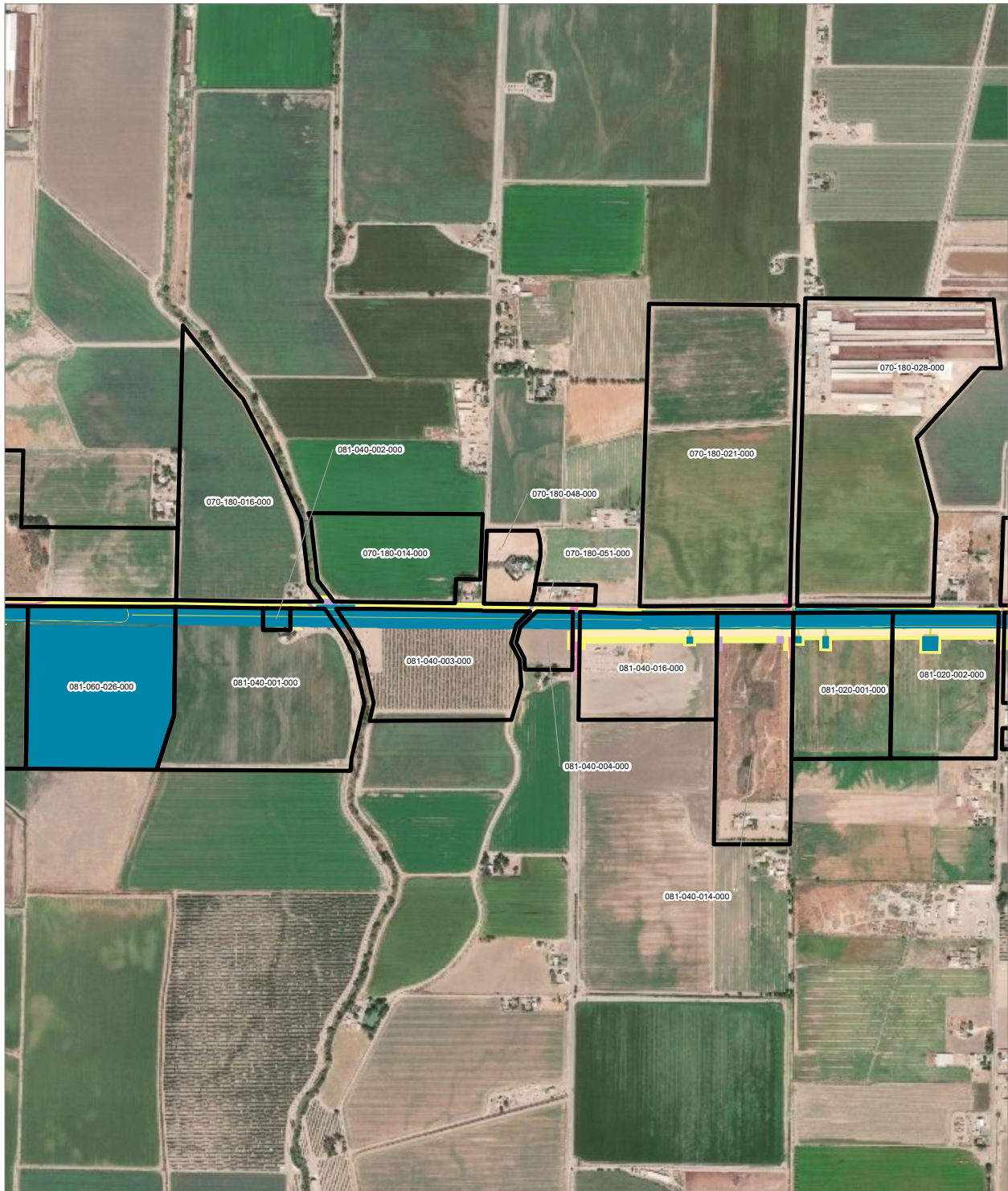
PRELIMINARY DRAFT/SUBJECT TO CHANGE - HSR ALIGNMENT IS NOT DETERMINED
 SOURCE: ESRI, 2019; San Jose County, 2016; San Benito County, 2016; Merced Counties, 2016.



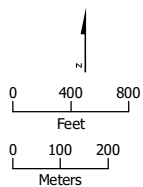
- HSR Right-of-Way
- Roadway Right-of-Way
- HSR Permanent Easement
- Permanent Utility Easement
- Temporary Construction Easement
- Temporary Utility Easement
- Non-Viable Remnant Parcel
- Parcel (APN Displayed)









Alternative 2





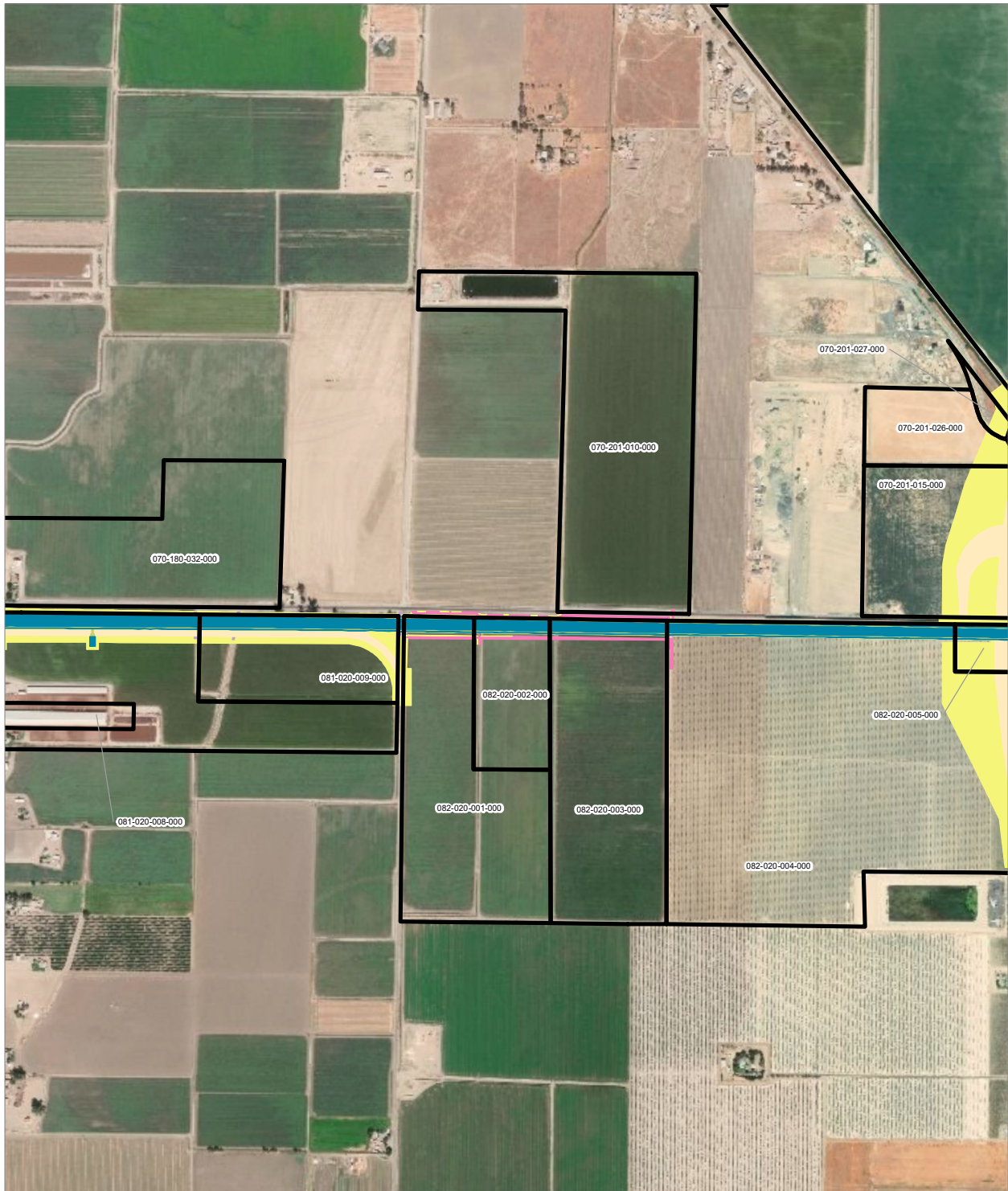
PRELIMINARY DRAFT/SUBJECT TO CHANGE - HSR ALIGNMENT IS NOT DETERMINED
 SOURCE: ESRI, 2019; San Jose County, 2016; San Benito County, 2016; Merced Counties, 2016.



- | | |
|--|---|
|  HSR Right-of-Way |  Temporary Construction Easement |
|  Roadway Right-of-Way |  Temporary Utility Easement |
|  HSR Permanent Easement |  Non-Viable Remnant Parcel |
|  Permanent Utility Easement |  Parcel (APN Displayed) |

Alternative 2





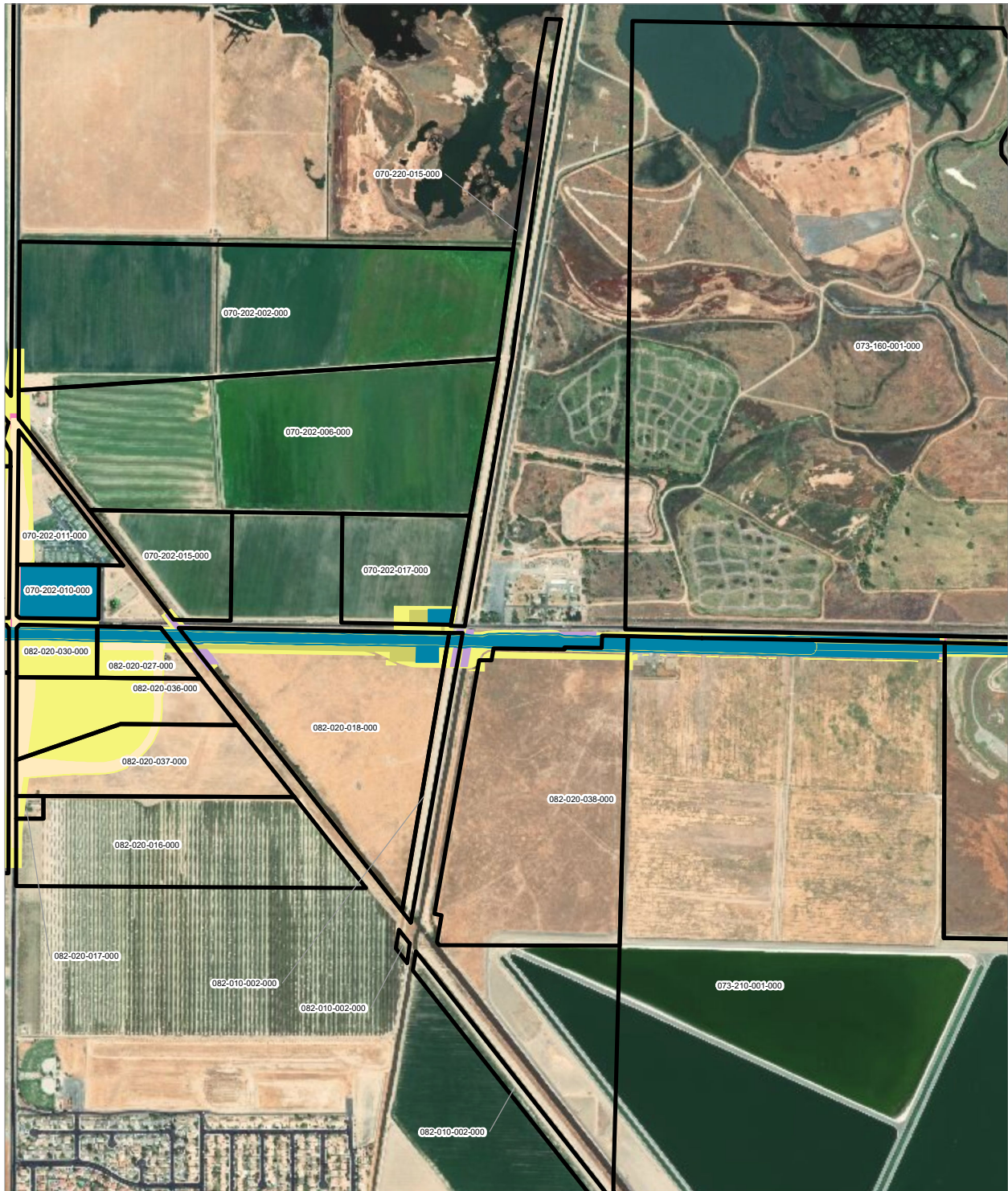
PRELIMINARY DRAFT/SUBJECT TO CHANGE - HSR ALIGNMENT IS NOT DETERMINED
 SOURCE: ESRI, 2019; San Jose County, 2016; San Benito County, 2016; Merced Counties, 2016.



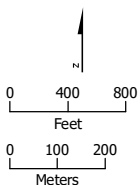
- HSR Right-of-Way
- Roadway Right-of-Way
- HSR Permanent Easement
- Permanent Utility Easement
- Temporary Construction Easement
- Temporary Utility Easement
- Non-Viable Remnant Parcel
- Parcel (APN Displayed)

Alternative 2





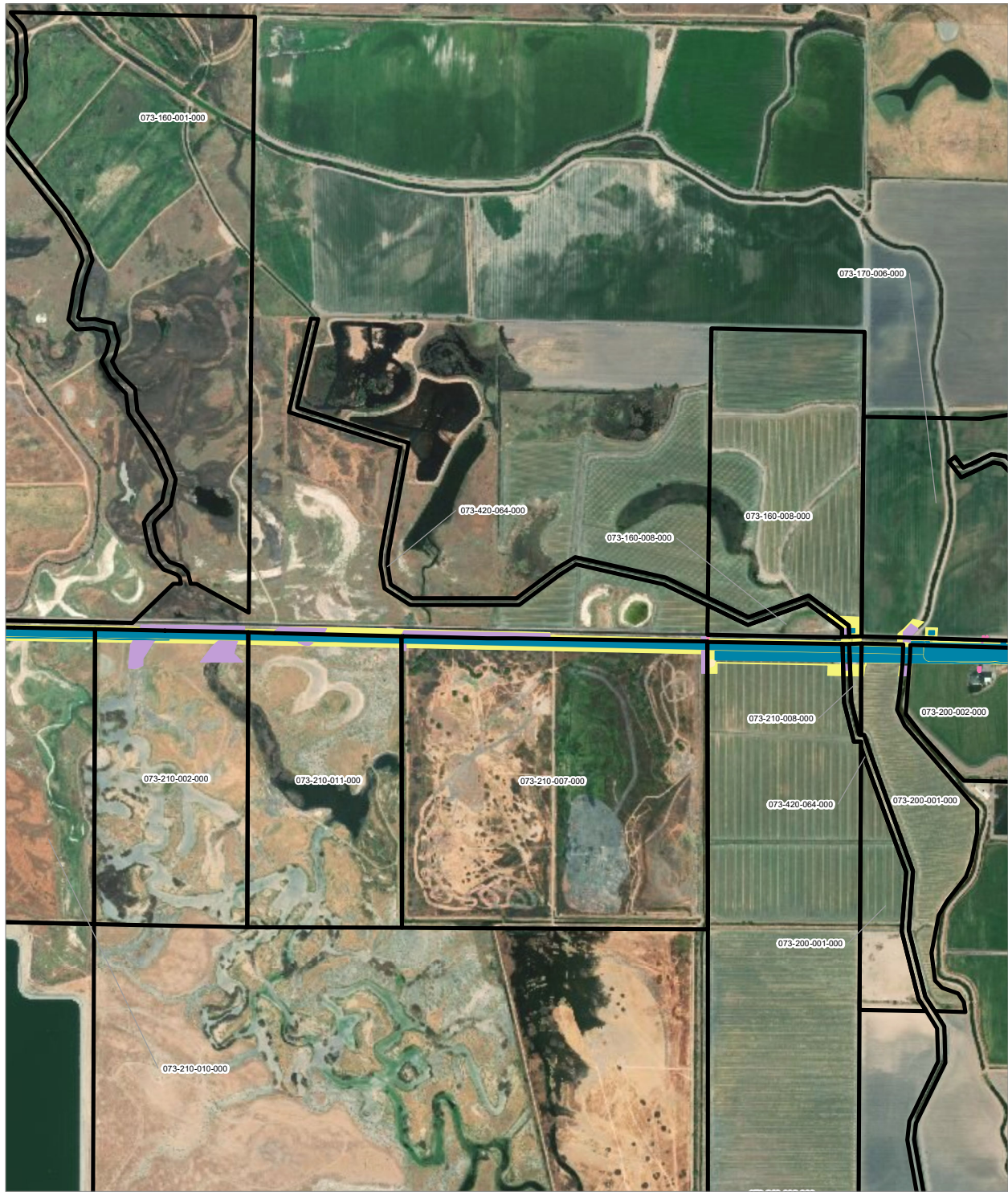
PRELIMINARY DRAFT/SUBJECT TO CHANGE - HSR ALIGNMENT IS NOT DETERMINED
 SOURCE: ESRI, 2019; San Jose County, 2016; San Benito County, 2016; Merced Counties, 2016.



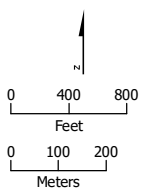
- HSR Right-of-Way
- Roadway Right-of-Way
- HSR Permanent Easement
- Permanent Utility Easement
- Temporary Construction Easement
- Temporary Utility Easement
- Non-Viable Remnant Parcel
- Parcel (APN Displayed)









Alternative 2





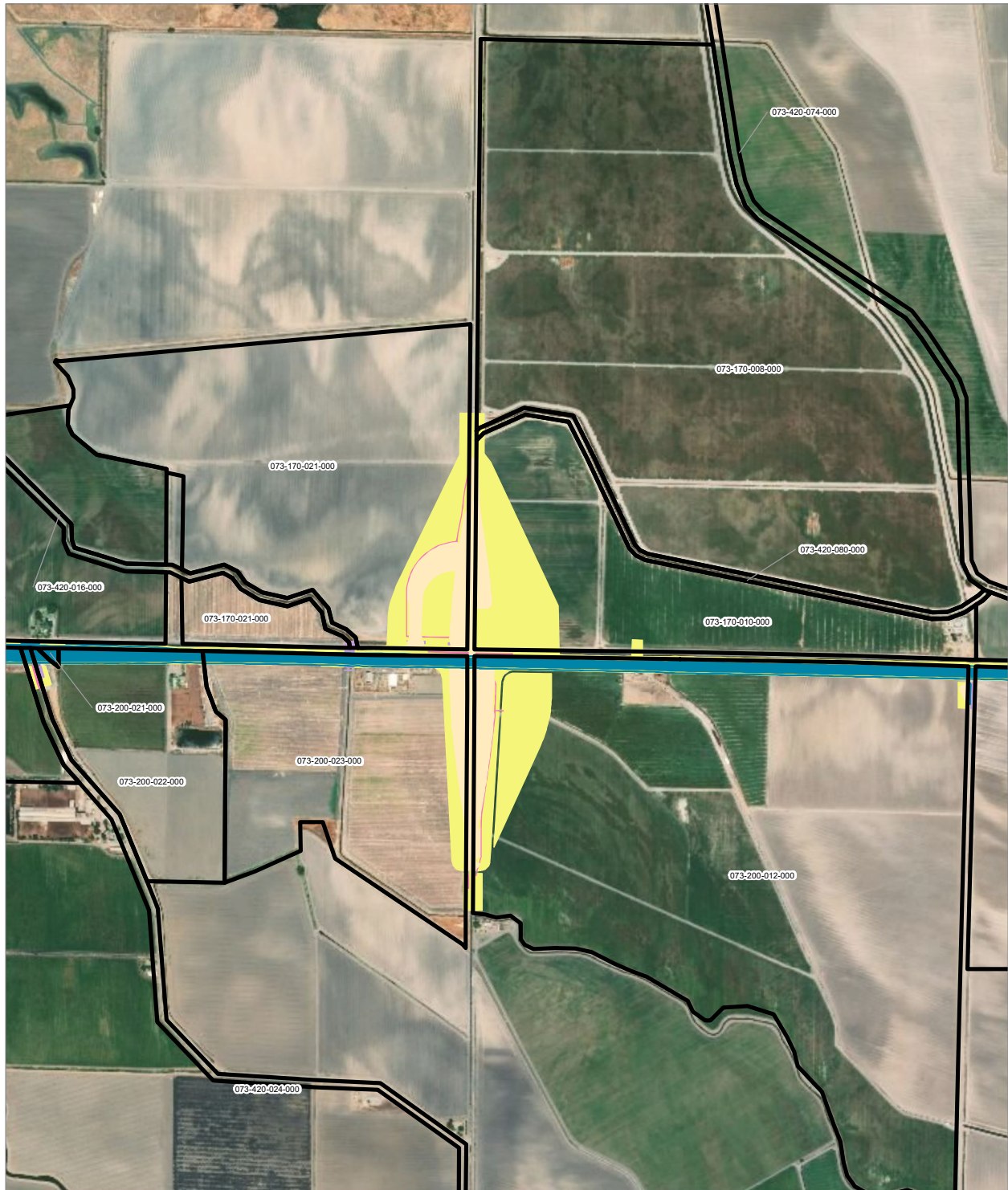
PRELIMINARY DRAFT/SUBJECT TO CHANGE - HSR ALIGNMENT IS NOT DETERMINED
 SOURCE: ESRI, 2019; San Jose County, 2016; San Benito County, 2016; Merced Counties, 2016.



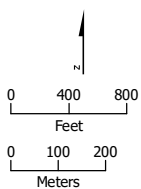
- | | |
|--|---|
|  HSR Right-of-Way |  Temporary Construction Easement |
|  Roadway Right-of-Way |  Temporary Utility Easement |
|  HSR Permanent Easement |  Non-Viable Remnant Parcel |
|  Permanent Utility Easement |  Parcel (APN Displayed) |









Alternative 2





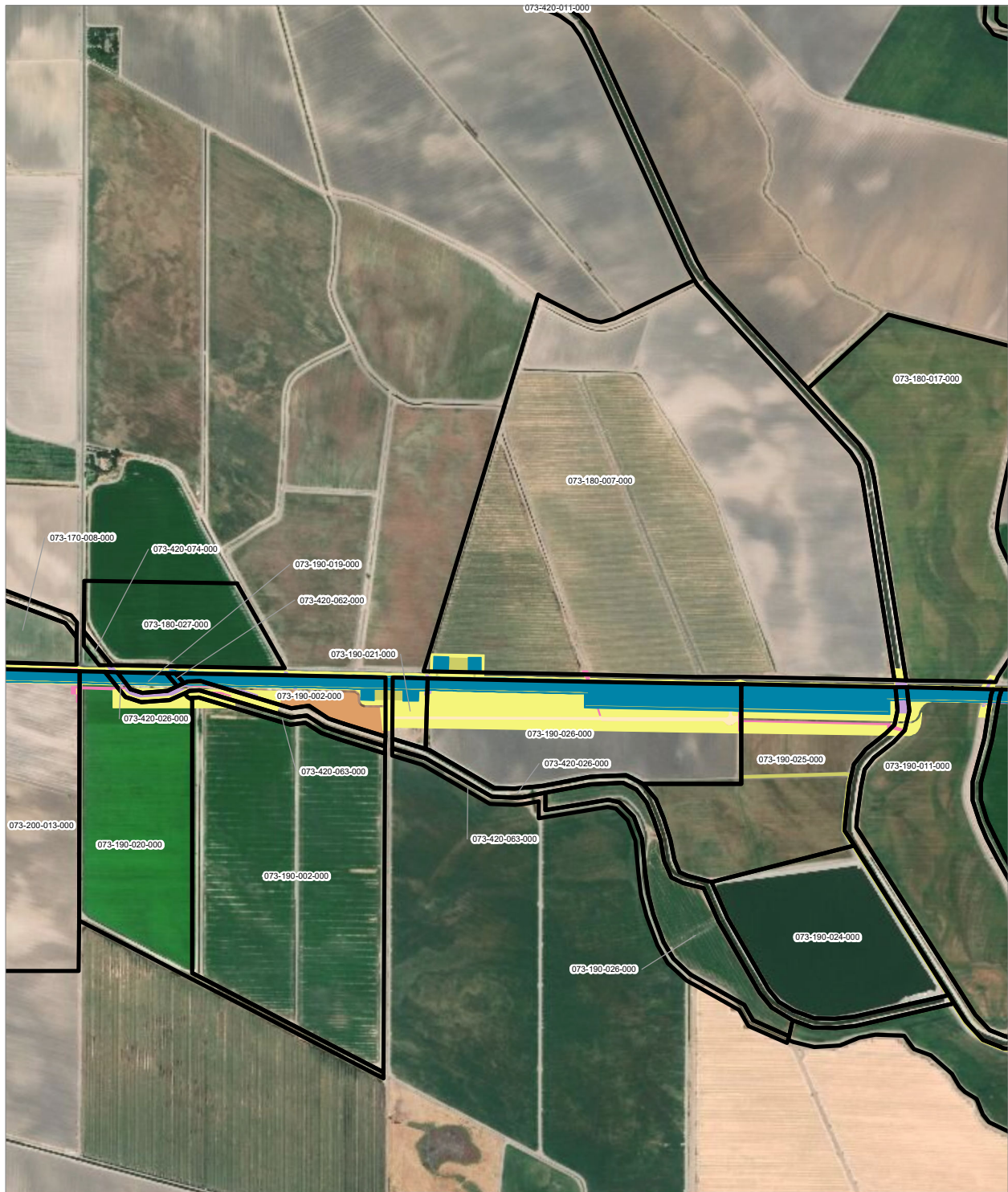
PRELIMINARY DRAFT/SUBJECT TO CHANGE - HSR ALIGNMENT IS NOT DETERMINED
 SOURCE: ESRI, 2019; San Jose County, 2016; San Benito County, 2016; Merced Counties, 2016.



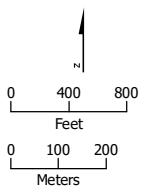
- | | |
|--|---|
|  HSR Right-of-Way |  Temporary Construction Easement |
|  Roadway Right-of-Way |  Temporary Utility Easement |
|  HSR Permanent Easement |  Non-Viable Remnant Parcel |
|  Permanent Utility Easement |  Parcel (APN Displayed) |









Alternative 2





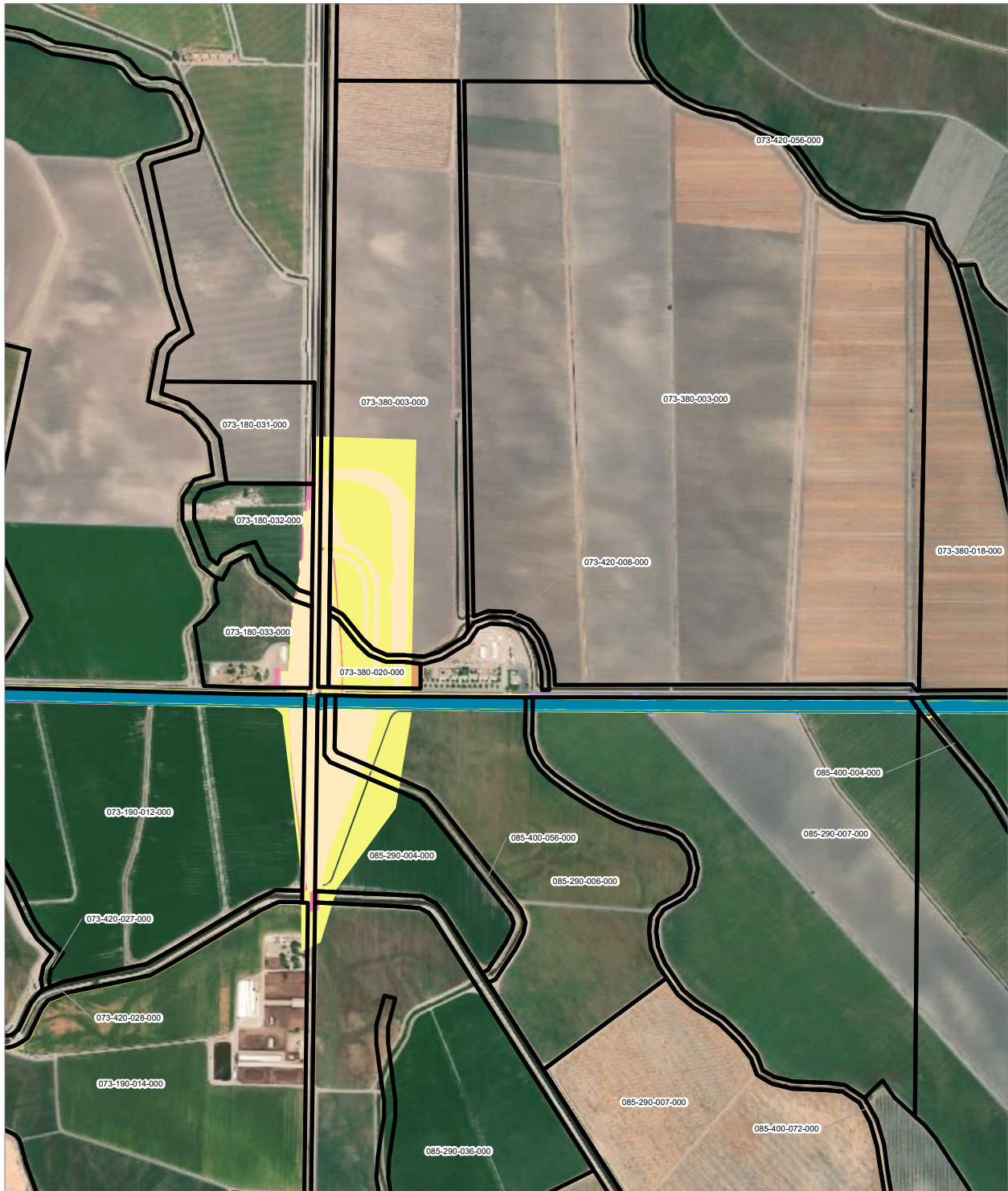
PRELIMINARY DRAFT/SUBJECT TO CHANGE - HSR ALIGNMENT IS NOT DETERMINED
 SOURCE: ESRI, 2019; San Jose County, 2016; San Benito County, 2016; Merced Counties, 2016.



- | | |
|--|---|
|  HSR Right-of-Way |  Temporary Construction Easement |
|  Roadway Right-of-Way |  Temporary Utility Easement |
|  HSR Permanent Easement |  Non-Viable Remnant Parcel |
|  Permanent Utility Easement |  Parcel (APN Displayed) |









Alternative 2





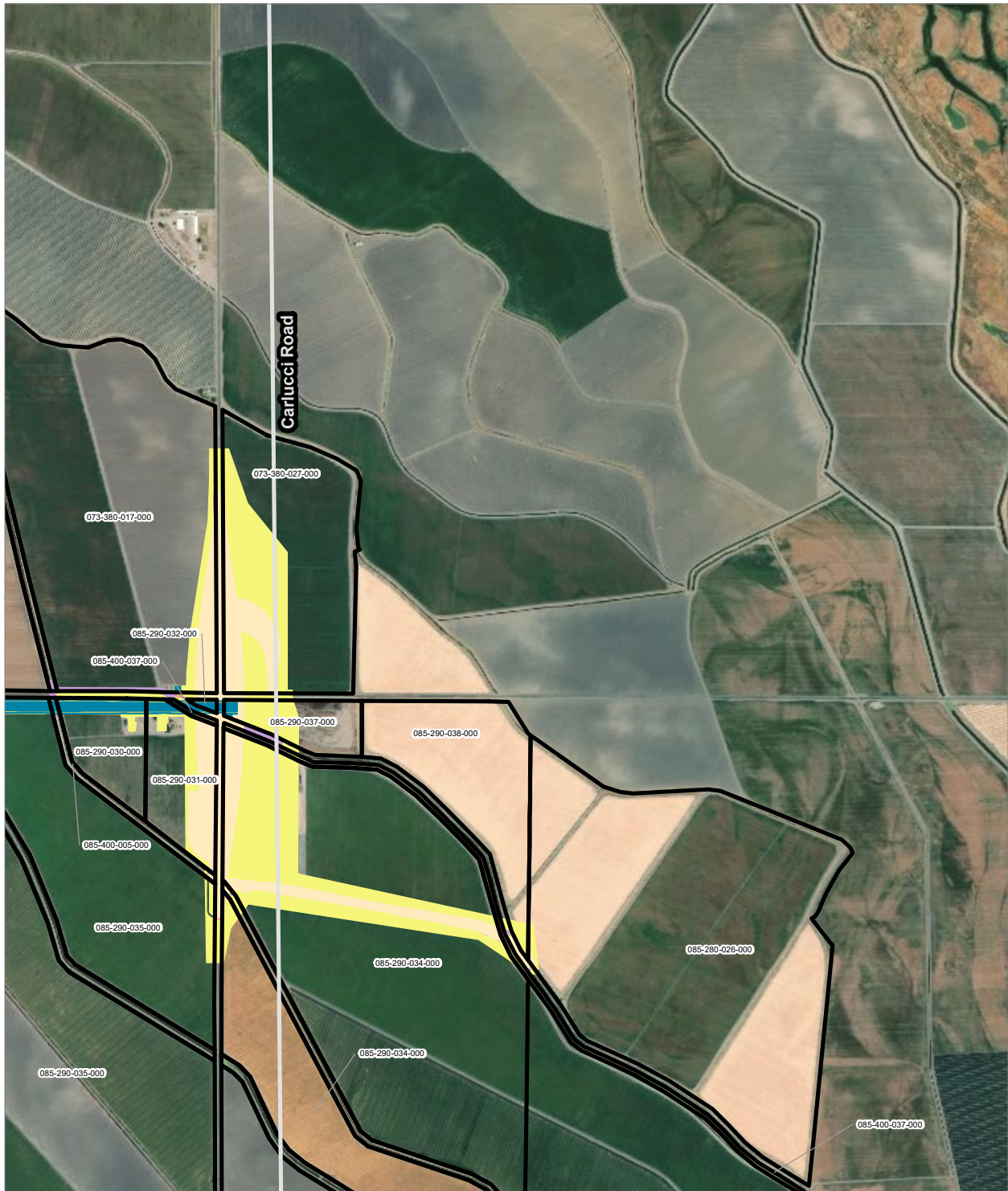
PRELIMINARY DRAFT/SUBJECT TO CHANGE - HSR ALIGNMENT IS NOT DETERMINED
 SOURCE: ESRI, 2019; San Jose County, 2016; San Benito County, 2016; Merced Counties, 2016.



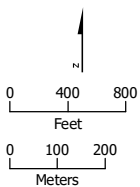
- | | | | |
|---|----------------------------|---|---------------------------------|
|  | HSR Right-of-Way |  | Temporary Construction Easement |
|  | Roadway Right-of-Way |  | Temporary Utility Easement |
|  | HSR Permanent Easement |  | Non-Viable Remnant Parcel |
|  | Permanent Utility Easement |  | Parcel (APN Displayed) |









Alternative 2





PRELIMINARY DRAFT/SUBJECT TO CHANGE - HSR ALIGNMENT IS NOT DETERMINED
 SOURCE: ESRI, 2019; San Jose County, 2016; San Benito County, 2016; Merced Counties, 2016.



- | | |
|--|---|
|  HSR Right-of-Way |  Temporary Construction Easement |
|  Roadway Right-of-Way |  Temporary Utility Easement |
|  HSR Permanent Easement |  Non-Viable Remnant Parcel |
|  Permanent Utility Easement |  Parcel (APN Displayed) |

Alternative 2

