

APPENDIX 3.8-A: WATERBODIES CROSSED BY THE PROJECT ALTERNATIVES

Table 1 Waterbodies Crossed by the Project Alternatives

Name	Within Alternative 1?	Within Alternative 2?	Within Alternative 3?	Within Alternative 4?
San Jose Diridon Station Approach				
Los Gatos Creek	✓	✓	✓	✓
Guadalupe River	✓	✓	✓	✓
Palustrine Forested Wetland 6	✓	✓	✓	✓
Monterey Corridor				
Constructed Basin 1	✓	✓	✓	
Constructed Watercourse 1	✓	✓	✓	✓
Constructed Basin 10	✓	✓	✓	✓
Morgan Hill and Gilroy				
Coyote Alamos Canal		✓		
Coyote Creek	✓	✓	✓	✓
Coyote Creek Reservoir	✓	✓	✓	
Coyote Creek Palustrine Forested Wetlands	✓	✓	✓	✓
Marsh 8		✓		✓
Constructed Watercourse 124	✓	✓	✓	
Seasonal Wetland 14	✓	✓	✓	
Fisher Creek	✓	✓	✓	✓
Coyote Canal Extension	✓	✓	✓	✓
Constructed Watercourse 125				✓
Constructed Watercourse 126				✓
Seasonal Wetland 15	✓	✓	✓	✓

Name	Within Alternative 1?	Within Alternative 2?	Within Alternative 3?	Within Alternative 4?
Coyote Canal	✓	✓	✓	✓
Coyote Creek Tributary 1	✓	✓	✓	✓
Coyote Creek Tributary 2	✓	✓	✓	✓
Coyote Creek Tributary 3	✓	✓	✓	✓
Coyote Creek Tributary 4	✓	✓	✓	✓
Coyote Creek Tributary 5	✓	✓	✓	✓
Coyote Creek Tributary 6	✓	✓	✓	✓
Coyote Creek Tributary 7	✓	✓	✓	✓
Coyote Creek Tributary 8	✓	✓	✓	✓
Seasonal Wetland 16	✓	✓	✓	✓
Constructed Watercourse 127	✓	✓	✓	✓
Constructed Watercourse 129	✓	✓	✓	✓
Constructed Watercourse 161		✓		
Coyote Canal Tributary 1	✓	✓	✓	✓
Coyote Canal Tributary 2	✓	✓	✓	✓
Constructed Watercourse 130		✓		
Cochran Channel	✓		✓	
Constructed Basin 2		✓		
Seasonal Wetland 18		✓		
Constructed Basin 3		✓		
Seasonal Wetland 17		✓		
Seasonal Wetland 1		✓		✓
Fisher Creek Tributary 1		✓		✓

Name	Within Alternative 1?	Within Alternative 2?	Within Alternative 3?	Within Alternative 4?
Seasonal Wetland 2	✓	✓	✓	✓
West Little Llagas Creek Tributary 1	✓	✓	✓	✓
West Little Llagas Creek Tributary 2	✓	✓	✓	✓
Constructed Basin 11		✓		✓
Constructed Basin 4		✓		
Madrone Channel	✓		✓	
Butterfield Channel	✓	✓	✓	✓
West Little Llagas Creek	✓	✓	✓	✓
Seasonal Wetland 19		✓		
Constructed Basin 5		✓		
Constructed Basin 6		✓		
Little Llagas Creek	✓	✓	✓	✓
Llagas Creek	✓	✓	✓	✓
Constructed Basin 7	✓	✓	✓	
West Branch Llagas Creek	✓	✓	✓	✓
West Branch Llagas Creek Tributary 1	✓	✓	✓	✓
Constructed Watercourse 3		✓		
Constructed Watercourse 131	✓	✓		✓
Constructed Watercourse 132		✓		
Upper Miller Slough	✓	✓	✓	✓
Lower Miller Slough	✓		✓	
Palustrine Forested Wetland 7			✓	
Palustrine Forested Wetland 9			✓	

Name	Within Alternative 1?	Within Alternative 2?	Within Alternative 3?	Within Alternative 4?
Princeville Channel	✓	✓		✓
Dexter Creek			✓	
Marsh 1			✓	
Jones Creek			✓	
San Ysidro Creek			✓	
Constructed Watercourse 4			✓	
Constructed Watercourse 5			✓	
Constructed Watercourse 6			✓	
Constructed Basin 12				✓
Constructed Basin 13				✓
Constructed Watercourse 7	✓	✓		
Gilroy Wastewater Treatment Ponds	✓	✓		
Constructed Watercourse 156	✓	✓		
Constructed Watercourse 8	✓	✓	✓	✓
Constructed Watercourse 9			✓	
Constructed Watercourse 10			✓	
Constructed Watercourse 11			✓	
Constructed Watercourse 12			✓	
Pajaro River	✓	✓	✓	✓
Constructed Watercourse 133	✓	✓	✓	✓
Constructed Watercourse 13	✓	✓	✓	✓
Seasonal Wetland 4	✓	✓		
Uvas Creek ¹	✓	✓		

Name	Within Alternative 1?	Within Alternative 2?	Within Alternative 3?	Within Alternative 4?
Carnadero Creek ¹	✓	✓		
Uvas-Carnadero Creek Palustrine Forested Wetlands	✓	✓		
Constructed Watercourse 14	✓	✓		
Palustrine Forested Wetland 8	✓	✓		
Constructed Watercourse 135	✓	✓		✓
Constructed Watercourse 15	✓	✓	✓	✓
Seasonal Wetland 5				✓
Constructed Watercourse 16	✓	✓		✓
Pajaro River Palustrine Forested Wetlands	✓	✓		✓
Constructed Watercourse 157	✓	✓	✓	✓
Constructed Watercourse 158	✓	✓	✓	✓
Constructed Watercourse 159	✓	✓	✓	✓
Constructed Watercourse 17	✓	✓		✓
Constructed Watercourse 18	✓	✓		✓
Constructed Watercourse 19	✓	✓		✓
Millers Canal	✓	✓	✓	✓
Constructed Watercourse 134			✓	
Constructed Watercourse 136			✓	
Constructed Watercourse 137	✓	✓	✓	✓
Constructed Watercourse 20	✓	✓		✓
Constructed Watercourse 21	✓	✓		✓
Constructed Watercourse 22	✓	✓		✓

Name	Within Alternative 1?	Within Alternative 2?	Within Alternative 3?	Within Alternative 4?
Constructed Watercourse 23	✓	✓	✓	✓
Marsh 2			✓	
Constructed Watercourse 25			✓	
Constructed Watercourse 138			✓	
Constructed Watercourse 26	✓	✓	✓	✓
Tequisquita Slough			✓	
Tequisquita Slough Pond 1	✓	✓		✓
Tequisquita Slough Pond 2			✓	
Tequisquita Slough Marsh	✓	✓	✓	✓
Tequisquita Slough Seasonal Wetland 1				
Tequisquita Slough Seasonal Wetland 2	✓		✓	✓
Constructed Watercourse 27			✓	
Pacheco Creek ³	✓	✓	✓	✓
Pacheco Creek Tributary 1	✓	✓		✓
Seasonal Wetland 7	✓	✓		✓
Marsh 4	✓	✓	✓	✓
Seasonal Wetland 8	✓	✓	✓	✓
Constructed Watercourse 28	✓	✓	✓	✓
Palustrine Forested Wetland 10	✓	✓		✓
Palustrine Forested Wetland 2	✓		✓	
Marsh 5	✓	✓	✓	✓
Constructed Watercourse 29	✓	✓		✓
Constructed Watercourse 30	✓	✓	✓	✓

Name	Within Alternative 1?	Within Alternative 2?	Within Alternative 3?	Within Alternative 4?
Seasonal Wetland 9	✓	✓	✓	✓
Ortega Creek	✓	✓	✓	✓
Seasonal Wetland 10	✓	✓	✓	✓
Ortega Creek Tributary 1	✓	✓	✓	✓
Ortega Creek Tributary 2	✓	✓	✓	✓
Ortega Creek Tributary 3	✓	✓	✓	✓
Ortega Creek Tributary 4	✓	✓	✓	✓
Ortega Creek Tributary 5	✓	✓	✓	✓
Ortega Creek Tributary 6	✓	✓	✓	✓
Ortega Creek Tributary 7	✓	✓	✓	✓
Ortega Creek Tributary 8	✓	✓	✓	✓
Ortega Creek Tributary 9	✓	✓	✓	✓
Ortega Creek Tributary 10	✓	✓	✓	✓
Ortega Creek Tributary 11	✓	✓	✓	✓
Ortega Creek Tributary 13	✓	✓	✓	✓
Ortega Creek Tributary 14	✓	✓	✓	✓
Ortega Creek Tributary 15	✓	✓	✓	✓
Pond 2	✓	✓	✓	✓
Pond 3	✓	✓	✓	✓
Pacheco Creek Tributary 2			✓	
Pacheco Creek Tributary 3	✓	✓	✓	✓
Pacheco Creek Tributary 4	✓	✓	✓	✓
Pond 13	✓	✓	✓	✓

Name	Within Alternative 1?	Within Alternative 2?	Within Alternative 3?	Within Alternative 4?
Pond 4	✓	✓	✓	✓
Pond 5	✓	✓	✓	✓
Pacheco Creek Tributary 56	✓	✓	✓	✓
Pacheco Creek Tributary 5	✓	✓	✓	✓
Pacheco Creek Tributary 6	✓	✓	✓	✓
Pacheco Creek Tributary 31	✓	✓	✓	✓
Pacheco Creek Tributary 32	✓	✓	✓	✓
Pacheco Creek Palustrine Forested Wetlands 2	✓	✓	✓	✓
Constructed Watercourse 31	✓	✓	✓	✓
Pacheco Creek Tributary 7	✓	✓	✓	✓
Pacheco Creek Tributary 8	✓	✓	✓	✓
Pacheco Pass				
Pacheco Creek ²	✓	✓	✓	✓
Pond 6	✓	✓	✓	✓
Pacheco Creek Tributary 9	✓	✓	✓	✓
Pacheco Creek Tributary 10	✓	✓	✓	✓
Carmen Creek	✓	✓	✓	✓
Carmen Creek Tributary 1	✓	✓	✓	✓
Pacheco Creek Tributary 33	✓	✓	✓	✓
Pacheco Creek Tributary 34	✓	✓	✓	✓
Pacheco Creek Tributary 35	✓	✓	✓	✓
Pacheco Creek Tributary 36	✓	✓	✓	✓

Name	Within Alternative 1?	Within Alternative 2?	Within Alternative 3?	Within Alternative 4?
Pacheco Creek Tributary 37	✓	✓	✓	✓
Pacheco Creek Tributary 38	✓	✓	✓	✓
Pacheco Creek Tributary 39	✓	✓	✓	✓
Pacheco Creek Tributary 40	✓	✓	✓	✓
Pacheco Creek Tributary 41	✓	✓	✓	✓
Pond 7	✓	✓	✓	✓
Pond 8	✓	✓	✓	✓
Pacheco Creek Tributary 42	✓	✓	✓	✓
Pond 9	✓	✓	✓	✓
Pacheco Creek Tributary 11	✓	✓	✓	✓
Pacheco Creek Tributary 12	✓	✓	✓	✓
Pacheco Creek Tributary 13	✓	✓	✓	✓
Pacheco Creek Tributary 14	✓	✓	✓	✓
Pacheco Creek Tributary 15				
Pacheco Creek Tributary 16	✓	✓	✓	✓
Constructed Watercourse 139	✓	✓	✓	✓
Elephant Head Creek	✓	✓	✓	✓
Elephant Head Creek Tributary 1	✓	✓	✓	✓
Constructed Watercourse 140	✓	✓	✓	✓
Constructed Watercourse 141	✓	✓	✓	✓
Constructed Watercourse 142	✓	✓	✓	✓
Constructed Watercourse 143	✓	✓	✓	✓
Pacheco Creek Tributary 17	✓	✓	✓	✓

Name	Within Alternative 1?	Within Alternative 2?	Within Alternative 3?	Within Alternative 4?
Marsh 7	✓	✓	✓	✓
Pacheco Creek Tributary 43	✓	✓	✓	✓
Pacheco Creek Tributary 44	✓	✓	✓	✓
Harper Canyon Creek	✓	✓	✓	✓
Harper Canyon Creek Tributary 1	✓	✓	✓	✓
Harper Canyon Creek Tributary 2	✓	✓	✓	✓
Harper Canyon Creek Tributary 3	✓	✓	✓	✓
Harper Canyon Creek Tributary 4				
Pacheco Creek Tributary 19	✓	✓	✓	✓
Pond 10	✓	✓	✓	✓
Pond 11	✓	✓	✓	✓
Pacheco Creek Tributary 20	✓	✓	✓	✓
Pacheco Creek Tributary 21	✓	✓	✓	✓
Pacheco Creek Tributary 22	✓	✓	✓	✓
Pacheco Creek Tributary 45	✓	✓	✓	✓
Pacheco Creek Tributary 46	✓	✓	✓	✓
Pacheco Creek Tributary 47	✓	✓	✓	✓
Pacheco Creek Tributary 48	✓	✓	✓	✓
Pacheco Creek Tributary 49	✓	✓	✓	✓
Pacheco Creek Tributary 50	✓	✓	✓	✓
Pacheco Creek Tributary 51	✓	✓	✓	✓
Pacheco Creek Tributary 52	✓	✓	✓	✓
Pacheco Creek Tributary 53	✓	✓	✓	✓

Name	Within Alternative 1?	Within Alternative 2?	Within Alternative 3?	Within Alternative 4?
Pacheco Creek Tributary 57	✓	✓	✓	✓
Pacheco Creek Tributary 23	✓	✓	✓	✓
Pacheco Creek Tributary 24	✓	✓	✓	✓
South Fork Pacheco Creek	✓	✓	✓	✓
Pacheco Creek Tributary 25	✓	✓	✓	✓
Pacheco Creek Tributary 54	✓	✓	✓	✓
Pacheco Creek Tributary 26	✓	✓	✓	✓
Pacheco Creek Tributary 27	✓	✓	✓	✓
Pacheco Creek Tributary 28	✓	✓	✓	✓
Pacheco Creek Tributary 55	✓	✓	✓	✓
Pacheco Creek Tributary 29	✓	✓	✓	✓
Pacheco Creek Tributary 30	✓	✓	✓	✓
San Luis Reservoir Tributary 1	✓	✓	✓	✓
San Luis Reservoir Tributary 2	✓	✓	✓	✓
San Luis Reservoir Tributary 3	✓	✓	✓	✓
San Luis Reservoir Tributary 4	✓	✓	✓	✓
San Luis Reservoir Tributary 5	✓	✓	✓	✓
San Luis Reservoir Tributary 6	✓	✓	✓	✓
San Luis Reservoir Tributary 7	✓	✓	✓	✓
San Luis Reservoir Tributary 8	✓	✓	✓	✓
San Luis Reservoir Tributary 9	✓	✓	✓	✓
Cottonwood Creek Tributary 1	✓	✓	✓	✓
Cottonwood Creek Tributary 2	✓	✓	✓	✓

Name	Within Alternative 1?	Within Alternative 2?	Within Alternative 3?	Within Alternative 4?
Cottonwood Creek Tributary 3	✓	✓	✓	✓
Cottonwood Creek Tributary 4	✓	✓	✓	✓
Cottonwood Creek	✓	✓	✓	✓
Cottonwood Creek Tributary 5	✓	✓	✓	✓
Cottonwood Creek Tributary 6	✓	✓	✓	✓
Cottonwood Creek Tributary 7	✓	✓	✓	✓
Cottonwood Creek Tributary 8	✓	✓	✓	✓
Cottonwood Creek Tributary 9	✓	✓	✓	✓
Cottonwood Creek Tributary 10	✓	✓	✓	✓
Cottonwood Creek Tributary 11	✓	✓	✓	✓
Cottonwood Creek Tributary 12	✓	✓	✓	✓
Cottonwood Creek Tributary 13	✓	✓	✓	✓
Cottonwood Creek Tributary 14	✓	✓	✓	✓
Cottonwood Creek Tributary 15	✓	✓	✓	✓
Cottonwood Creek Tributary 16	✓	✓	✓	✓
Romero Creek Tributary 1	✓	✓	✓	✓
Romero Creek	✓	✓	✓	✓
Romero Creek Tributary 2	✓	✓	✓	✓
Romero Creek Tributary 3	✓	✓	✓	✓
Romero Creek Tributary 4	✓	✓	✓	✓
Romero Creek Tributary 5	✓	✓	✓	✓
Romero Creek Tributary 6	✓	✓	✓	✓
Romero Creek Tributary 7	✓	✓	✓	✓

Name	Within Alternative 1?	Within Alternative 2?	Within Alternative 3?	Within Alternative 4?
Romero Creek Tributary 8	✓	✓	✓	✓
Seasonal Wetland 20	✓	✓	✓	✓
Seasonal Wetland 21	✓	✓	✓	✓
Romero Creek Tributary 10	✓	✓	✓	✓
Romero Creek Tributary 11	✓	✓	✓	✓
Romero Creek Tributary 12	✓	✓	✓	✓
Romero Creek Tributary 13	✓	✓	✓	✓
Romero Creek Tributary 14	✓	✓	✓	✓
Romero Creek Tributary 15	✓	✓	✓	✓
Romero Creek Tributary 16	✓	✓	✓	✓
Romero Creek Tributary 17	✓	✓	✓	✓
Romero Creek Tributary 18	✓	✓	✓	✓
Romero Creek Tributary 19	✓	✓	✓	✓
Romero Creek Tributary 20	✓	✓	✓	✓
Romero Creek Tributary 21	✓	✓	✓	✓
Alkali Vernal Pool Complex 1	✓	✓	✓	✓
Seasonal Wetland 11	✓	✓	✓	✓
California Aqueduct	✓	✓	✓	✓
Seasonal Wetland 12	✓	✓	✓	✓
Delta-Mendota Canal	✓	✓	✓	✓
Constructed Watercourse 32	✓	✓	✓	✓
Constructed Watercourse 33	✓	✓	✓	✓
Outside Canal	✓	✓	✓	✓

Name	Within Alternative 1?	Within Alternative 2?	Within Alternative 3?	Within Alternative 4?
Constructed Watercourse 34	✓	✓	✓	✓
Constructed Watercourse 35	✓	✓	✓	✓
Constructed Watercourse 36	✓	✓	✓	✓
San Joaquin Valley Crossing				
Constructed Watercourse 37	✓	✓	✓	✓
Constructed Watercourse 38	✓	✓	✓	✓
Constructed Watercourse 163	✓	✓	✓	✓
Constructed Watercourse 145	✓	✓	✓	✓
Constructed Basin 14	✓	✓	✓	✓
Constructed Watercourse 39	✓	✓	✓	✓
Constructed Watercourse 162	✓	✓	✓	✓
Constructed Watercourse 40	✓	✓	✓	✓
Main Canal	✓	✓	✓	✓
Constructed Basin 9	✓	✓	✓	✓
Constructed Watercourse 41	✓	✓	✓	✓
Constructed Watercourse 43	✓	✓	✓	✓
Constructed Watercourse 44	✓	✓	✓	✓
Constructed Watercourse 160	✓	✓	✓	✓
Constructed Watercourse 45	✓	✓	✓	✓
Constructed Watercourse 146	✓	✓	✓	✓
Constructed Watercourse 47	✓	✓	✓	✓
Constructed Watercourse 48	✓	✓	✓	✓
Constructed Watercourse 165	✓	✓	✓	✓

Name	Within Alternative 1?	Within Alternative 2?	Within Alternative 3?	Within Alternative 4?
Alkali Scrub Wetland 1	✓	✓	✓	✓
Alkali Scrub Wetland 7	✓	✓	✓	✓
Natural Watercourse 2	✓	✓	✓	✓
San Luis Wasteway	✓	✓	✓	✓
Seasonal Wetland 22	✓	✓	✓	✓
Alkali Scrub Wetland 2	✓	✓	✓	✓
Alkali Scrub Wetland 3	✓	✓	✓	✓
Seasonal Wetland 23	✓	✓	✓	✓
Alkali Scrub Wetland 4	✓	✓	✓	✓
Alkali Scrub Wetland 8	✓	✓	✓	✓
Alkali Scrub Wetland 9	✓	✓	✓	✓
Constructed Watercourse 51	✓	✓	✓	✓
Constructed Watercourse 52	✓	✓	✓	✓
Constructed Watercourse 53	✓	✓	✓	✓
Constructed Watercourse 54	✓	✓	✓	✓
Constructed Watercourse 55	✓	✓	✓	✓
Constructed Watercourse 56	✓	✓	✓	✓
Constructed Watercourse 57	✓	✓	✓	✓
Constructed Watercourse 58	✓	✓	✓	✓
Constructed Watercourse 59	✓	✓	✓	✓
Constructed Watercourse 60	✓	✓	✓	✓
Constructed Watercourse 61	✓	✓	✓	✓
Constructed Watercourse 62	✓	✓	✓	✓

Name	Within Alternative 1?	Within Alternative 2?	Within Alternative 3?	Within Alternative 4?
Constructed Watercourse 63	✓	✓	✓	✓
Constructed Watercourse 64	✓	✓	✓	✓
Constructed Watercourse 65	✓	✓	✓	✓
Constructed Watercourse 66	✓	✓	✓	✓
Constructed Watercourse 67	✓	✓	✓	✓
Constructed Watercourse 68	✓	✓	✓	✓
Constructed Watercourse 147	✓	✓	✓	✓
Constructed Watercourse 148	✓	✓	✓	✓
Constructed Watercourse 149	✓	✓	✓	✓
Constructed Watercourse 163	✓	✓	✓	✓
Los Banos Creek	✓	✓	✓	✓
Los Banos Creek Tributary 1	✓	✓	✓	✓
Constructed Watercourse 69	✓	✓	✓	✓
Constructed Watercourse 70	✓	✓	✓	✓
Constructed Watercourse 71	✓	✓	✓	✓
Constructed Watercourse 72	✓	✓	✓	✓
Constructed Basin 15	✓	✓	✓	✓
Seasonal Wetland 13	✓	✓	✓	✓
Constructed Watercourse 73	✓	✓	✓	✓
Constructed Watercourse 76	✓	✓	✓	✓
Constructed Watercourse 77	✓	✓	✓	✓
Constructed Watercourse 78	✓	✓	✓	✓
Constructed Watercourse 79	✓	✓	✓	✓

Name	Within Alternative 1?	Within Alternative 2?	Within Alternative 3?	Within Alternative 4?
Constructed Watercourse 80	✓	✓	✓	✓
Constructed Watercourse 81	✓	✓	✓	✓
Constructed Watercourse 82	✓	✓	✓	✓
Santa Fe Canal	✓	✓	✓	✓
Vernal Pool 4	✓	✓	✓	✓
Constructed Watercourse 84	✓	✓	✓	✓
San Luis Drain	✓	✓	✓	✓
San Luis Canal	✓	✓	✓	✓
Porter-Blake Bypass	✓	✓	✓	✓
Constructed Watercourse 85	✓	✓	✓	✓
Constructed Watercourse 86	✓	✓	✓	✓
Mud Slough Alkali Marshes	✓	✓	✓	✓
Mud Slough	✓	✓	✓	✓
Alkali Scrub Wetland 10	✓	✓	✓	✓
Alkali Scrub Wetland 11	✓	✓	✓	✓
Alkali Scrub Wetland 12	✓	✓	✓	✓
Alkali Scrub Wetland 13	✓	✓	✓	✓
Constructed Watercourse 87	✓	✓	✓	✓
Constructed Watercourse 88	✓	✓	✓	✓
San Pedro Canal	✓	✓	✓	✓
Constructed Watercourse 89	✓	✓	✓	✓
Constructed Watercourse 90	✓	✓	✓	✓
Constructed Watercourse 164	✓	✓	✓	✓

Name	Within Alternative 1?	Within Alternative 2?	Within Alternative 3?	Within Alternative 4?
Boundary Drain	✓	✓	✓	✓
Lone Tree Canal	✓	✓	✓	✓
Devon Drain	✓	✓	✓	✓
Constructed Watercourse 92	✓	✓	✓	✓
Constructed Watercourse 93	✓	✓	✓	✓
Midway Swamp Ditch	✓	✓	✓	✓
Constructed Watercourse 94	✓	✓	✓	✓
Constructed Watercourse 95	✓	✓	✓	✓
Constructed Watercourse 96	✓	✓	✓	✓
Constructed Watercourse 97	✓	✓	✓	✓
Constructed Watercourse 98	✓	✓	✓	✓
Constructed Watercourse 150	✓	✓	✓	✓
Constructed Watercourse 99	✓	✓	✓	✓
Constructed Watercourse 100	✓	✓	✓	✓
West Delta Canal	✓	✓	✓	✓
West Delta Drain	✓	✓	✓	✓
Constructed Watercourse 151	✓	✓	✓	✓
Constructed Watercourse 152	✓	✓	✓	✓
Constructed Watercourse 101	✓	✓	✓	✓
Dambrosa Branch No. 1	✓	✓	✓	✓
Constructed Watercourse 102	✓	✓	✓	✓
Constructed Watercourse 103	✓	✓	✓	✓
Constructed Watercourse 104	✓	✓	✓	✓

Name	Within Alternative 1?	Within Alternative 2?	Within Alternative 3?	Within Alternative 4?
Delta Canal	✓	✓	✓	✓
Constructed Watercourse 105	✓	✓	✓	✓
East Delta Canal	✓	✓	✓	✓
Constructed Watercourse 107	✓	✓	✓	✓
Constructed Watercourse 108	✓	✓	✓	✓
Constructed Watercourse 109	✓	✓	✓	✓
Constructed Watercourse 110	✓	✓	✓	✓
Constructed Watercourse 111	✓	✓	✓	✓
Constructed Watercourse 112	✓	✓	✓	✓
Constructed Watercourse 113	✓	✓	✓	✓
Constructed Watercourse 114	✓	✓	✓	✓
Belmont Drain	✓	✓	✓	✓
County Road Ditch	✓	✓	✓	✓
Willis Branch	✓	✓	✓	✓
Constructed Watercourse 153	✓	✓	✓	✓
Poso Drain	✓	✓	✓	✓
Constructed Watercourse 115	✓	✓	✓	✓
Constructed Watercourse 116	✓	✓	✓	✓
Constructed Watercourse 117	✓	✓	✓	✓
Constructed Watercourse 118	✓	✓	✓	✓
Delta No. 1 Canal	✓	✓	✓	✓
Constructed Watercourse 154	✓	✓	✓	✓
Constructed Watercourse 155	✓	✓	✓	✓

Name	Within Alternative 1?	Within Alternative 2?	Within Alternative 3?	Within Alternative 4?
Constructed Watercourse 119	✓	✓	✓	✓
San Juan Drain	✓	✓	✓	✓
West San Juan No. 1 Canal	✓	✓	✓	✓
Constructed Watercourse 120	✓	✓	✓	✓
Constructed Watercourse 121	✓	✓	✓	✓
Constructed Watercourse 123	✓	✓	✓	✓
<i>Total Quantity Within Alternatives</i>	386	400	385	378

¹ Uvas Creek becomes Carnadero Creek near Bloomfield Avenue and U.S. 101.

² Pacheco Creek occurs within both the Morgan Hill and Gilroy and Pacheco Pass Subsections.

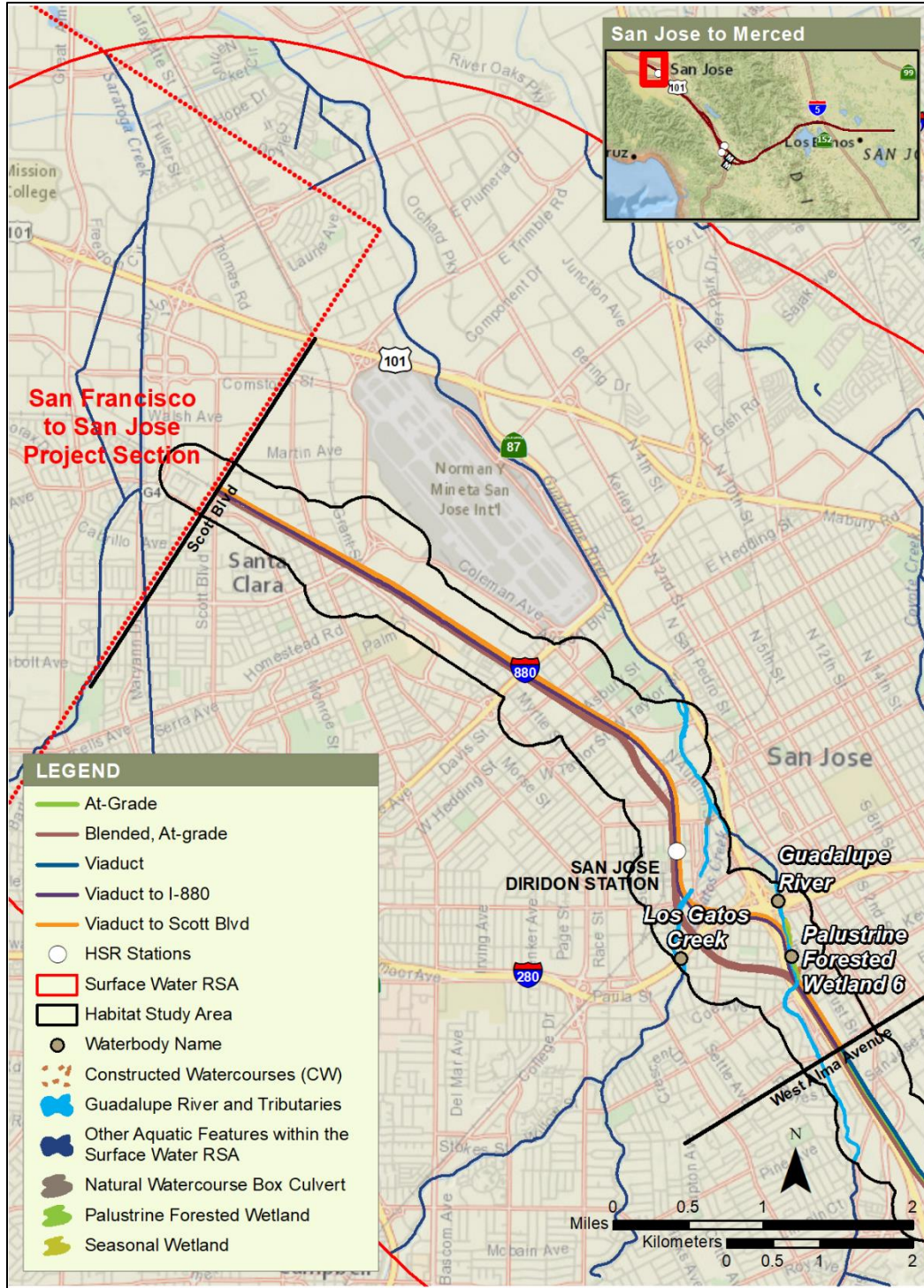
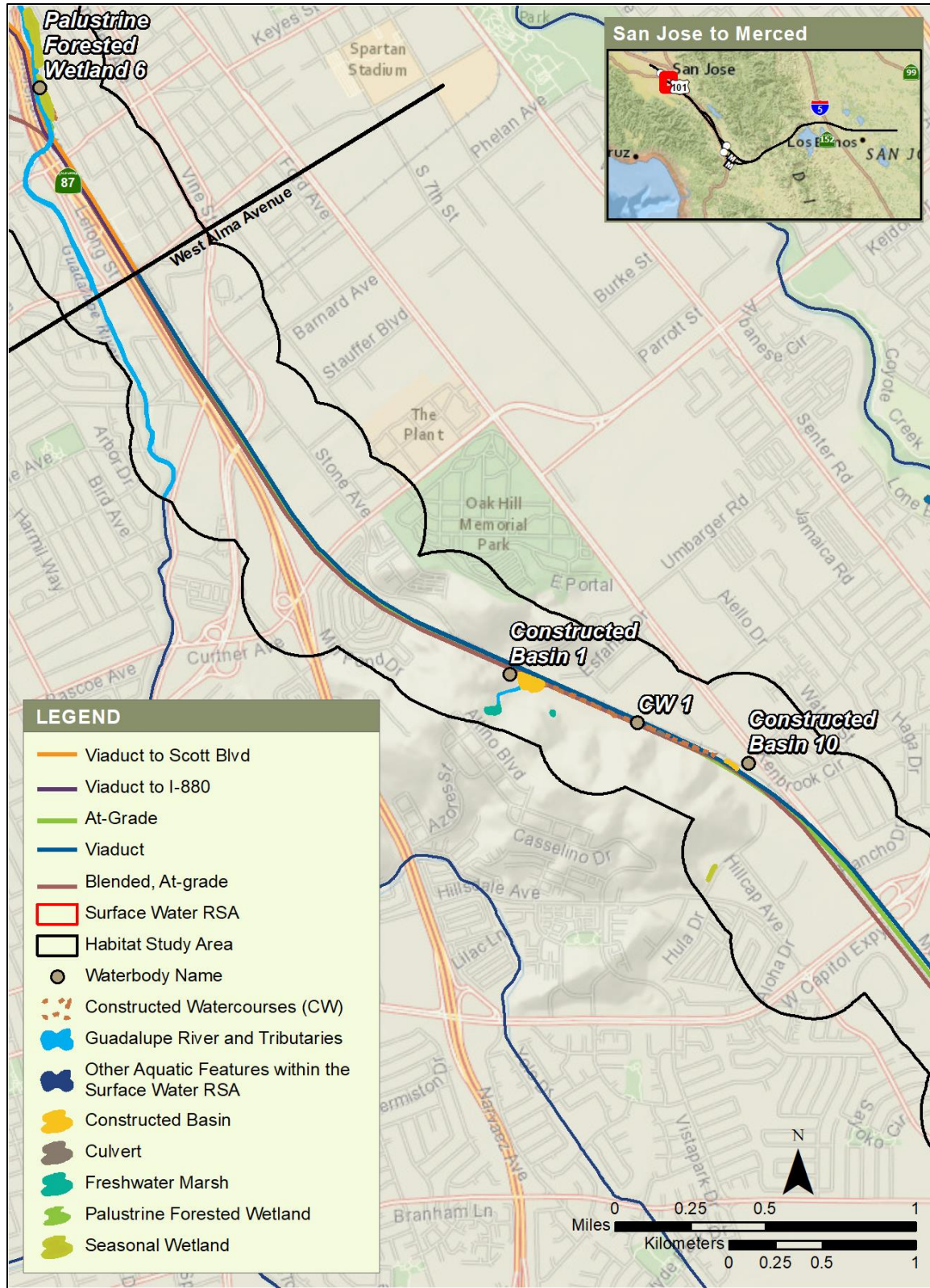


Figure 1 Waterbodies, San Jose Diridon Station Approach



Source: Authority 2020; USGS 2007–2014 and 2016; CDFW 2016; SCVWD 2012 and 2016; Sowers et al. 2005

JANUARY 2020

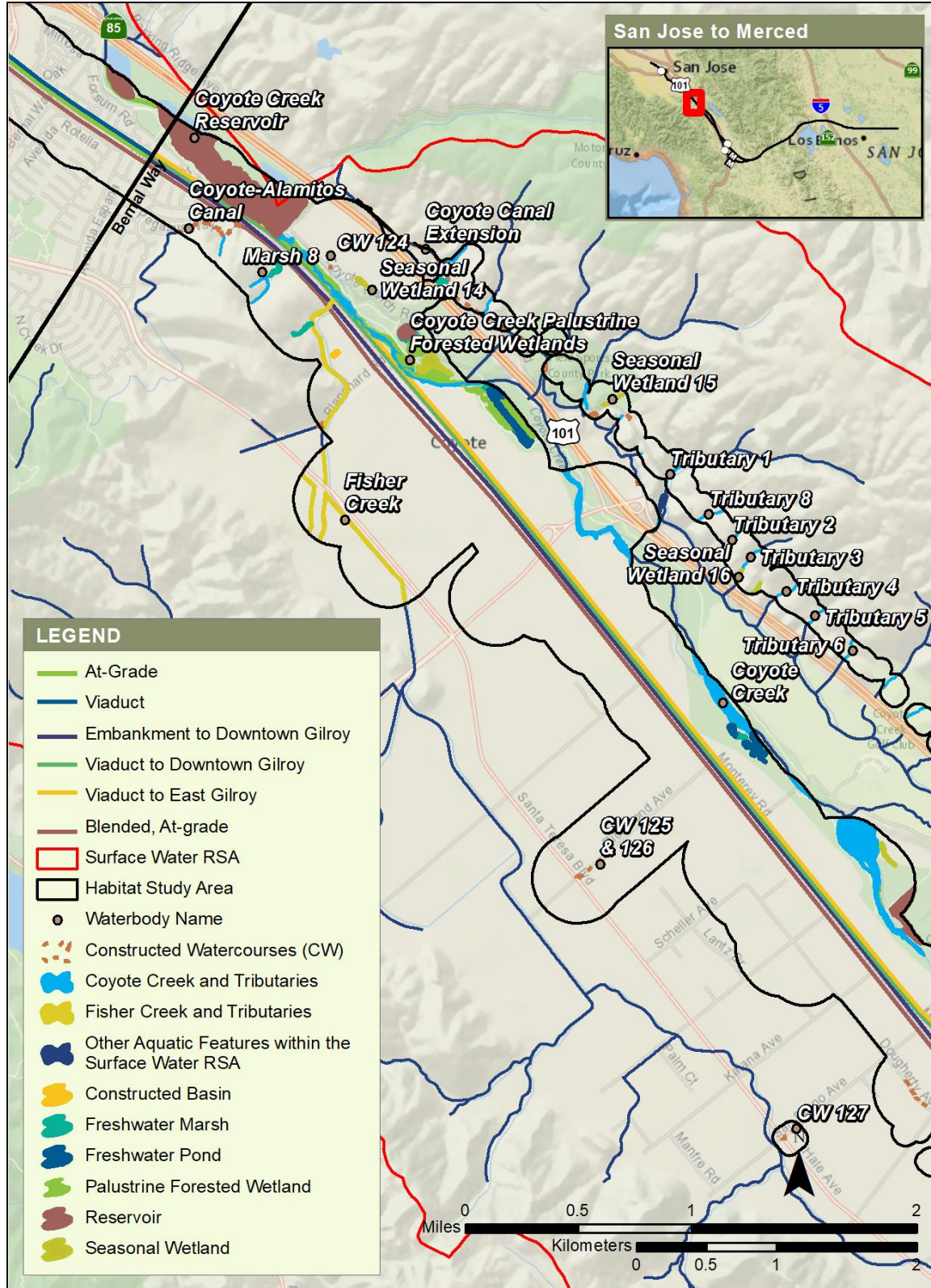
Figure 2 Waterbodies, Monterey Corridor Subsection (1 of 2)



Source: Authority 2020; USGS 2007–2014 and 2016; CDFW 2016; SCVWD 2012 and 2016; Sowers et al. 2005

JANUARY 2020

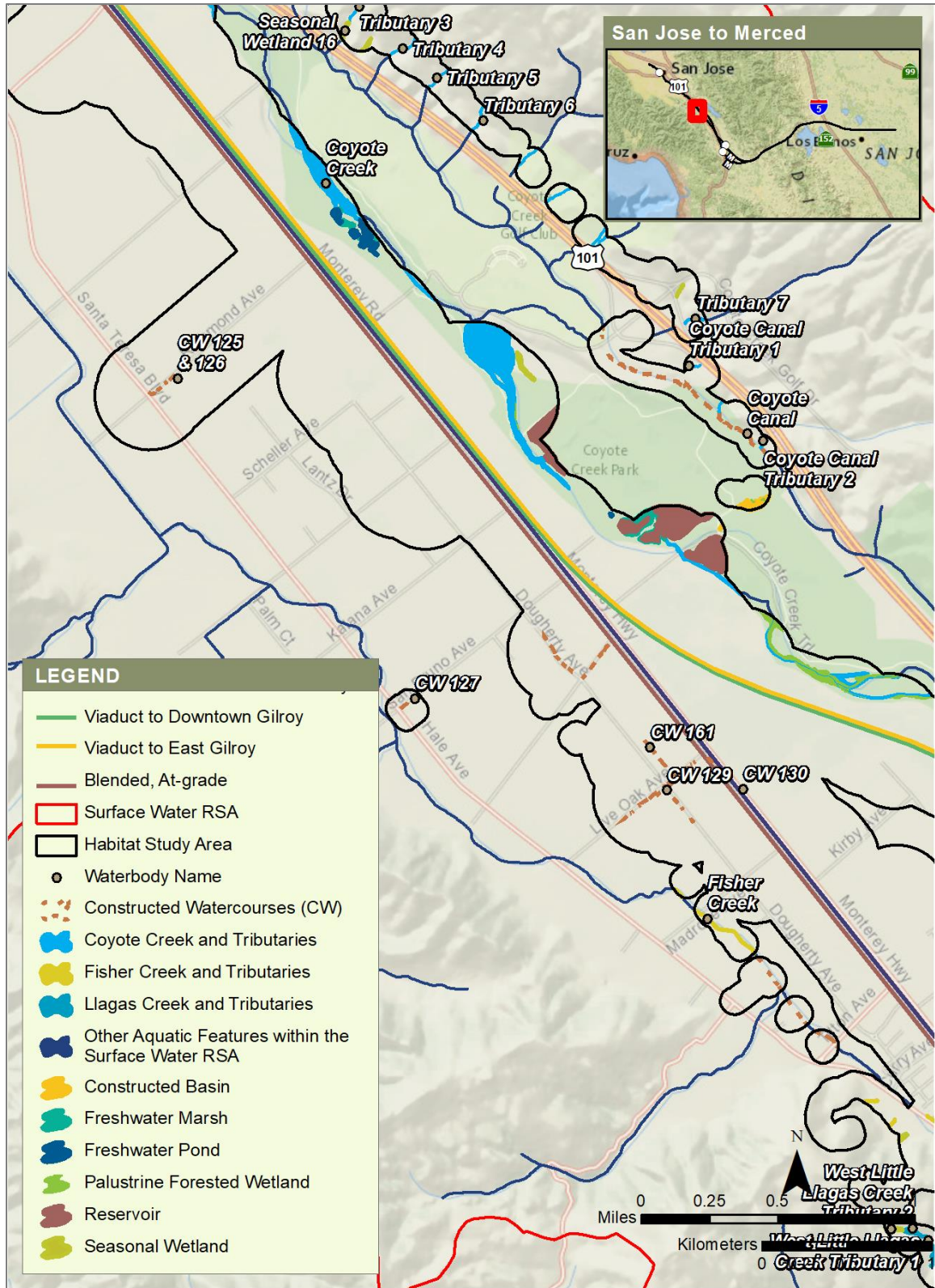
Figure 3 Waterbodies, Monterey Corridor Subsection (2 of 2)



Source: Authority 2020; USGS 2007–2014 and 2016; CDFW 2016; SCVWD 2012 and 2016; Sowers et al. 2005

JANUARY 2020

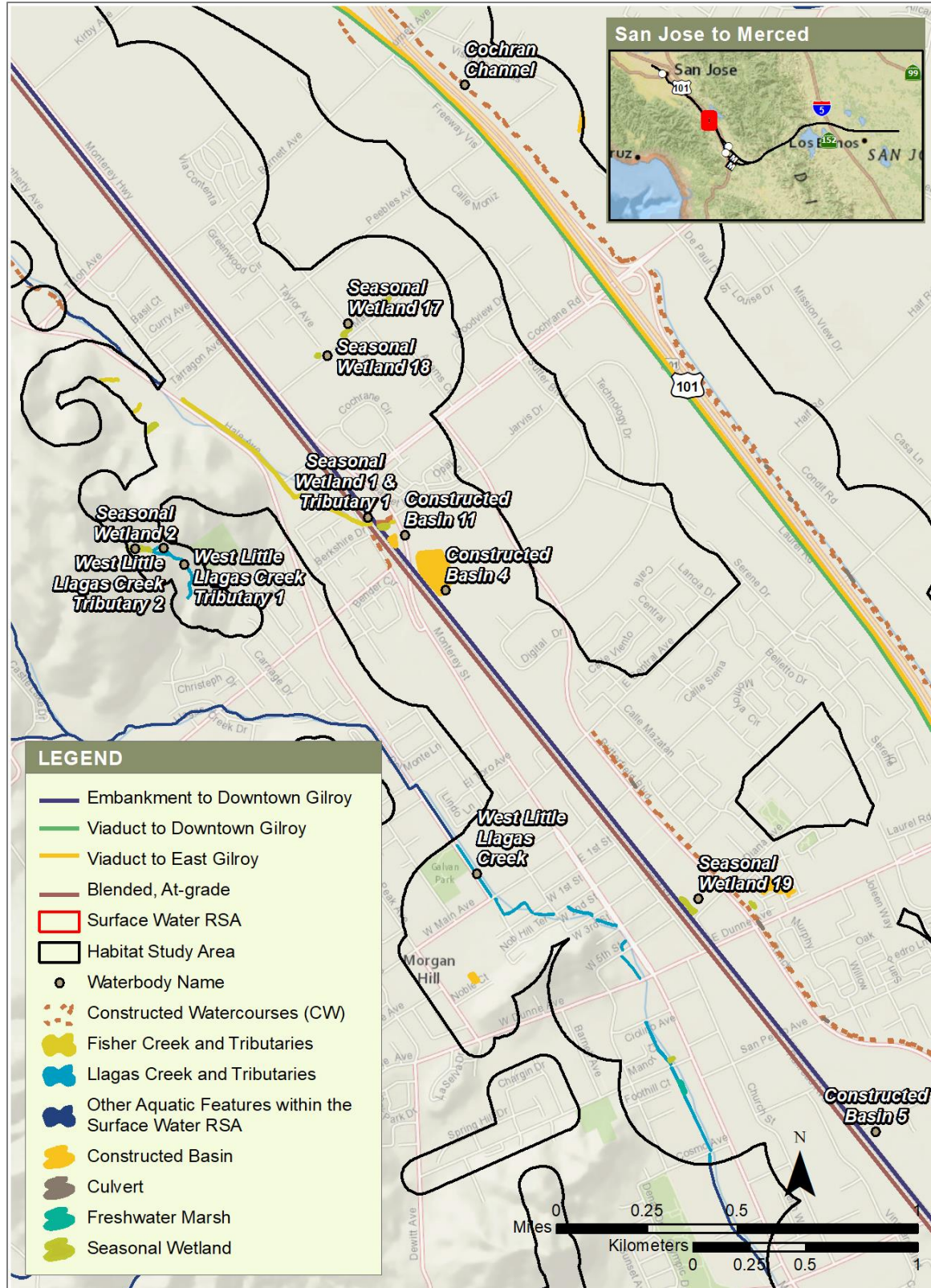
Figure 4 Waterbodies, Morgan Hill and Gilroy Subsection (1 of 10)



Source: Authority 2020; USGS 2007–2014 and 2016; CDFW 2016; SCVWD 2012 and 2016; Sowers et al. 2005

JANUARY 2020

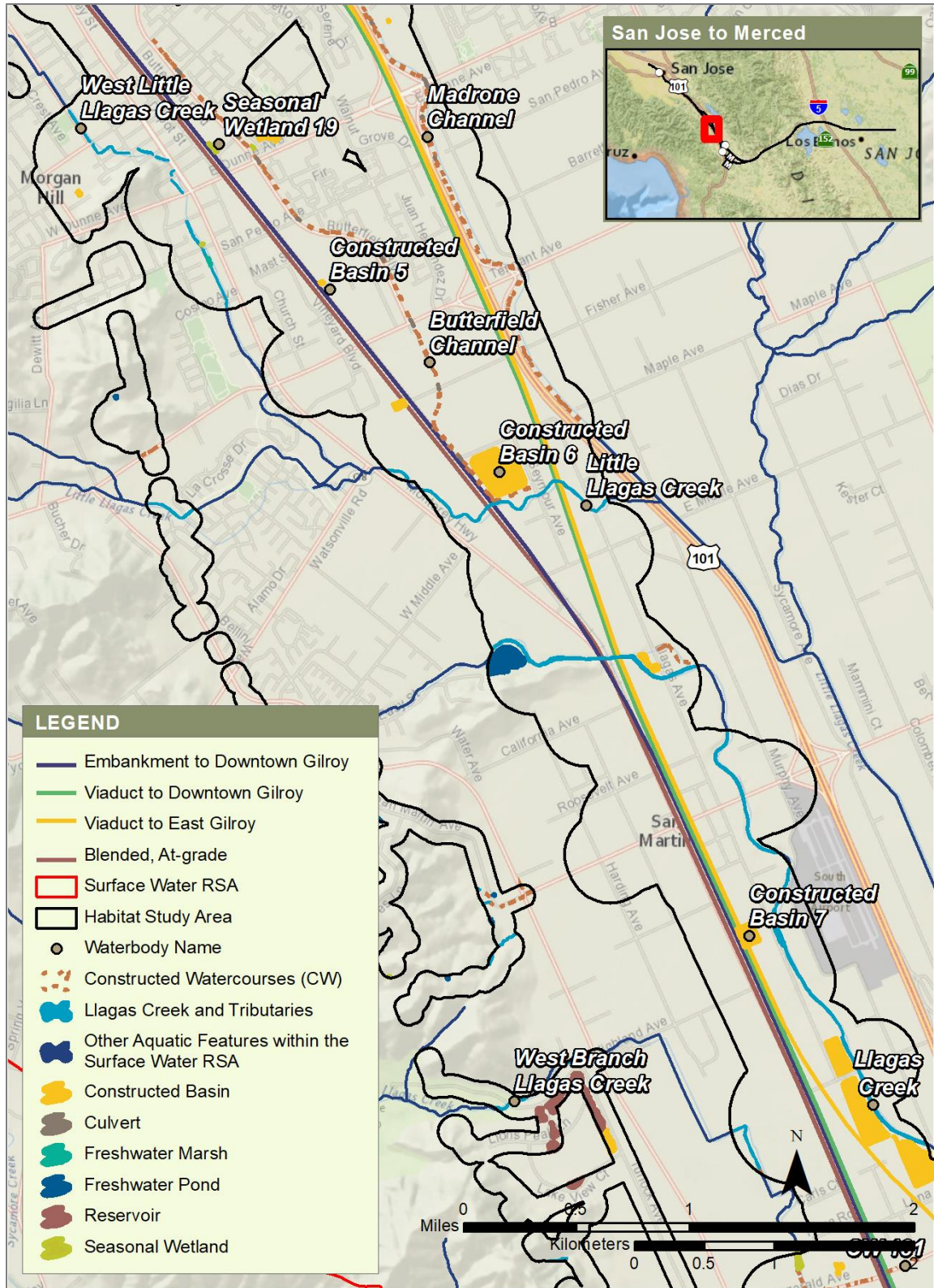
Figure 5 Waterbodies, Morgan Hill to Gilroy Subsection (2 of 10)



Source: Authority 2020; USGS 2007–2014 and 2016; CDFW 2016; SCVWD 2012 and 2016; Sowers et al. 2005

JANUARY 2020

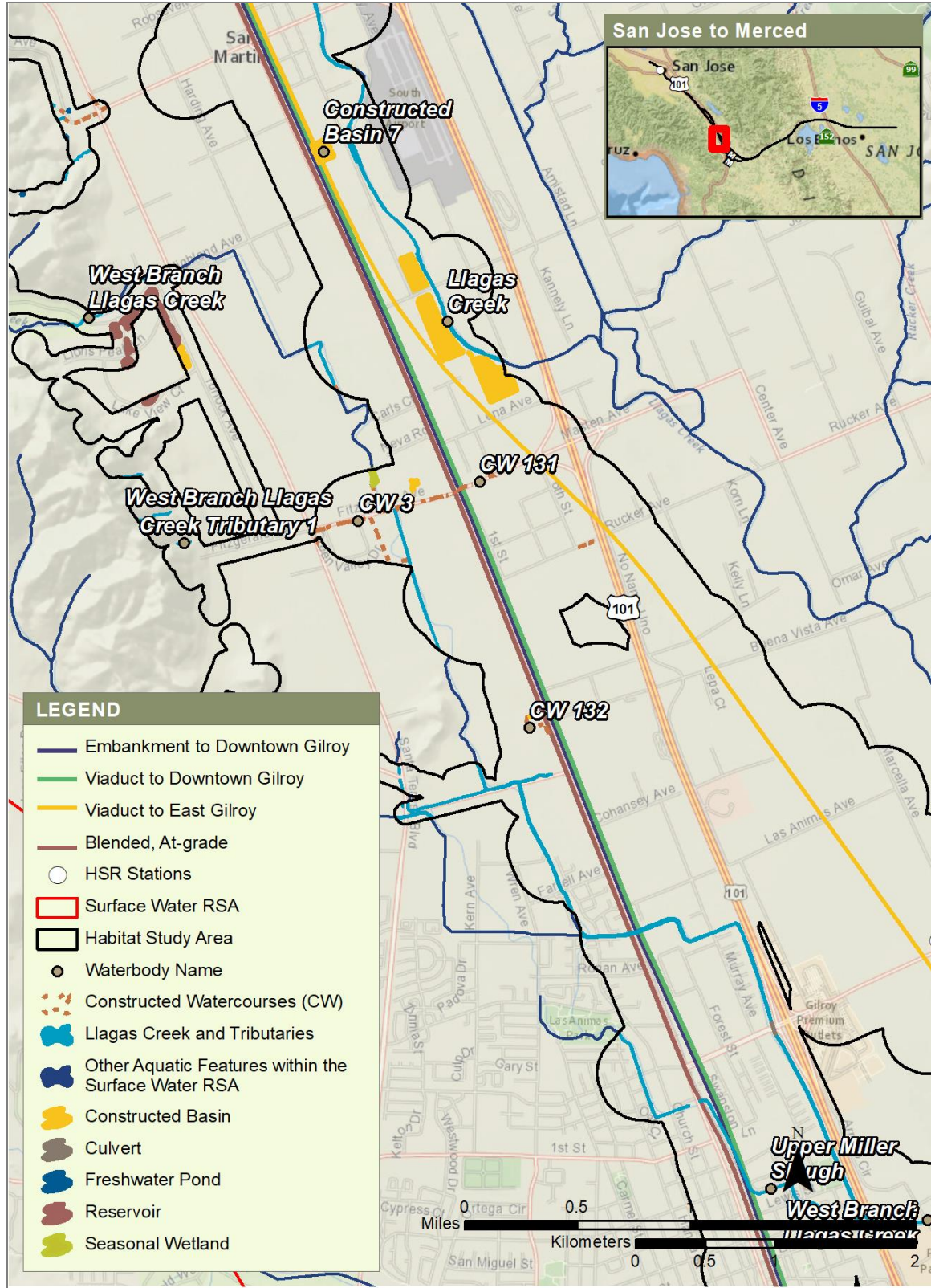
Figure 6 Waterbodies, Morgan Hill to Gilroy Subsection (3 of 10)



Source: Authority 2020; USGS 2007–2014 and 2016; CDFW 2016; SCVWD 2012 and 2016; Sowers et al. 2005

JANUARY 2020

Figure 7 Waterbodies, Morgan Hill to Gilroy Subsection (4 of 10)



Source: Authority 2020; USGS 2007–2014 and 2016; CDFW 2016; SCVWD 2012 and 2016; Sowers et al. 2005

JANUARY 2020

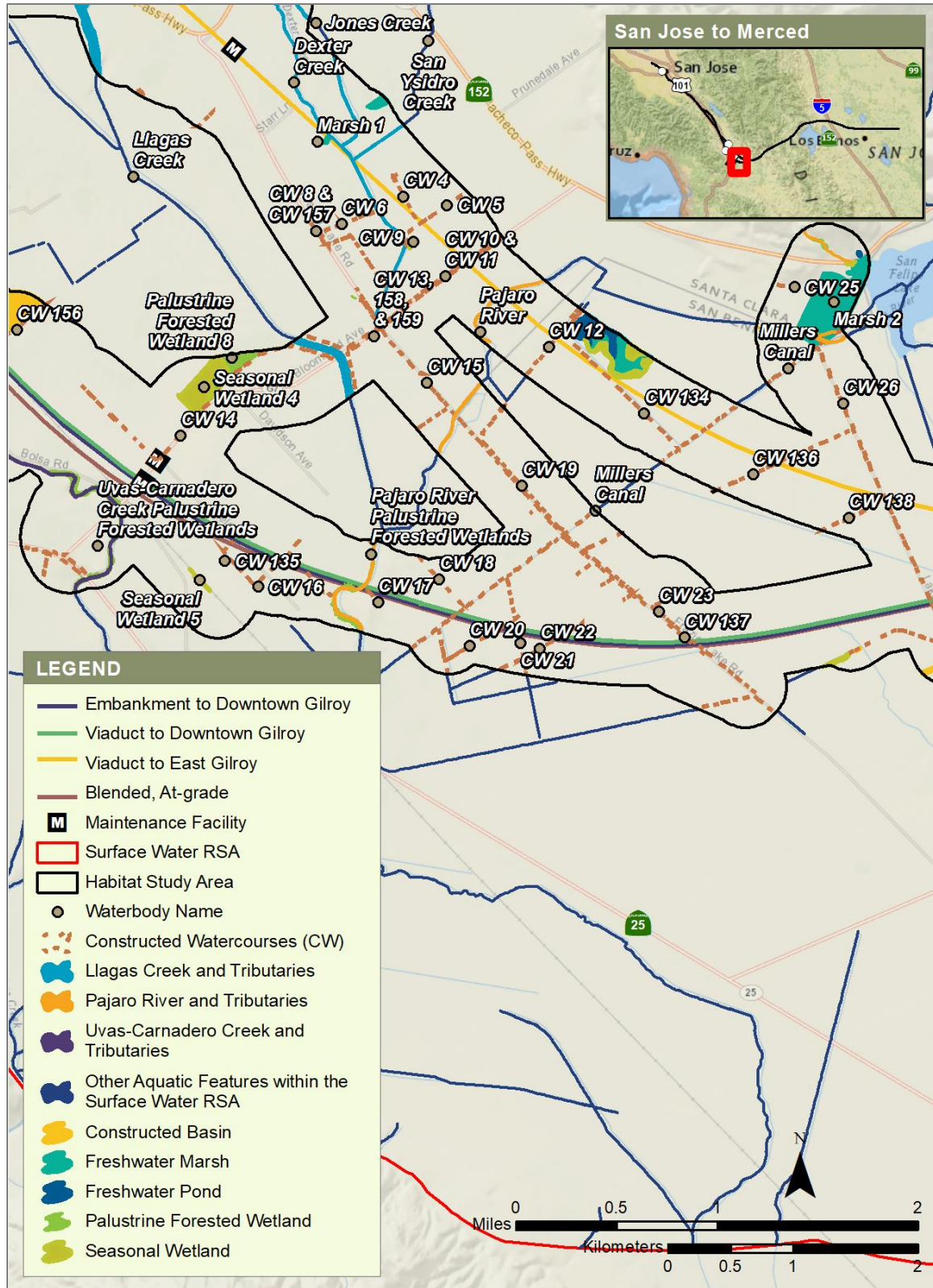
Figure 8 Waterbodies, Morgan Hill to Gilroy Subsection (5 of 10)



Source: Authority 2020; USGS 2007–2014 and 2016; CDFW 2016; SCVWD 2012 and 2016; Sowers et al. 2005

JANUARY 2020

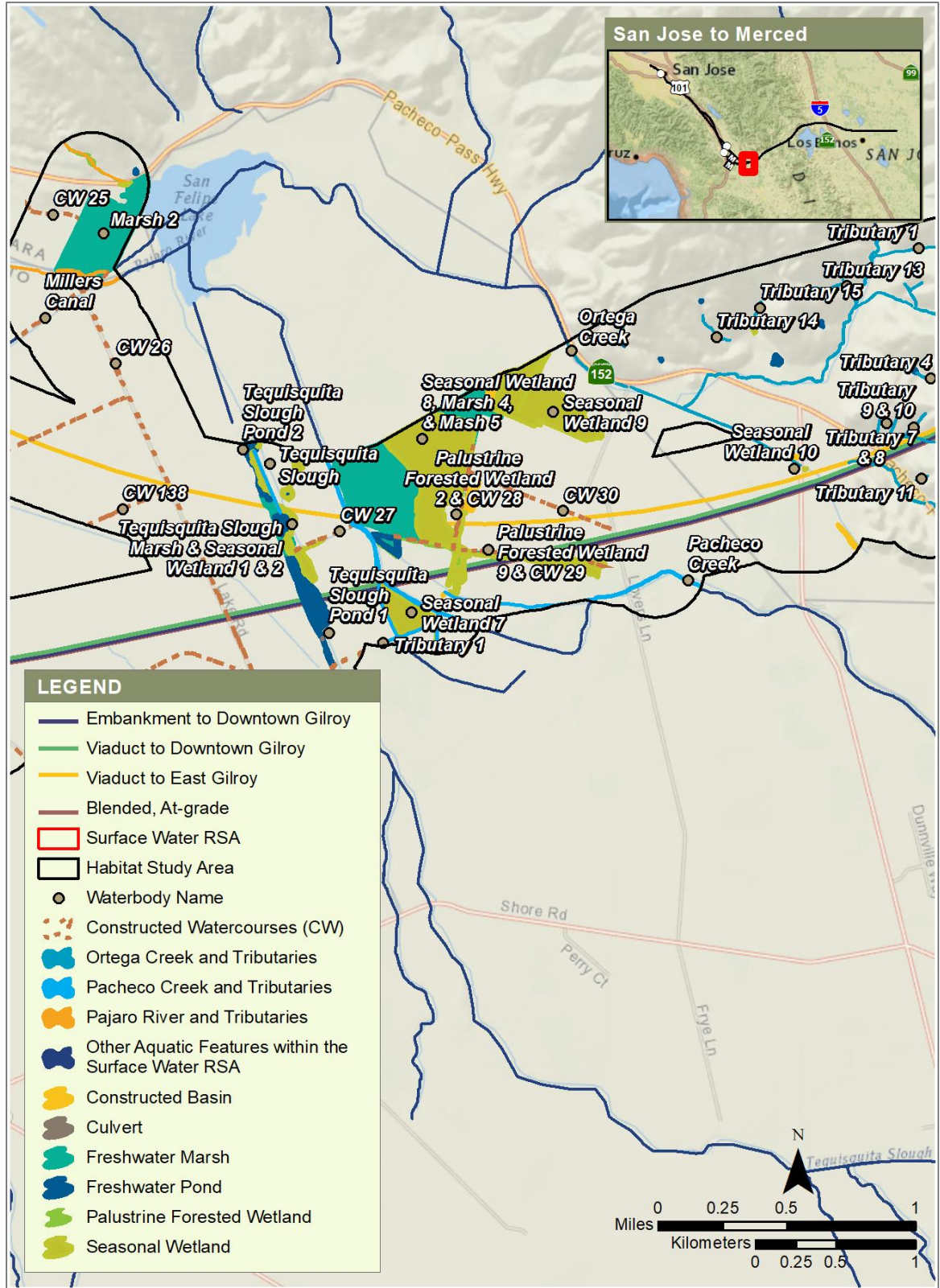
Figure 9 Waterbodies, Morgan Hill to Gilroy Subsection (6 of 10)



Source: Authority 2020; USGS 2007–2014 and 2016; CDFW 2016; SCVWD 2012 and 2016; Sowers et al. 2005

JANUARY 2020

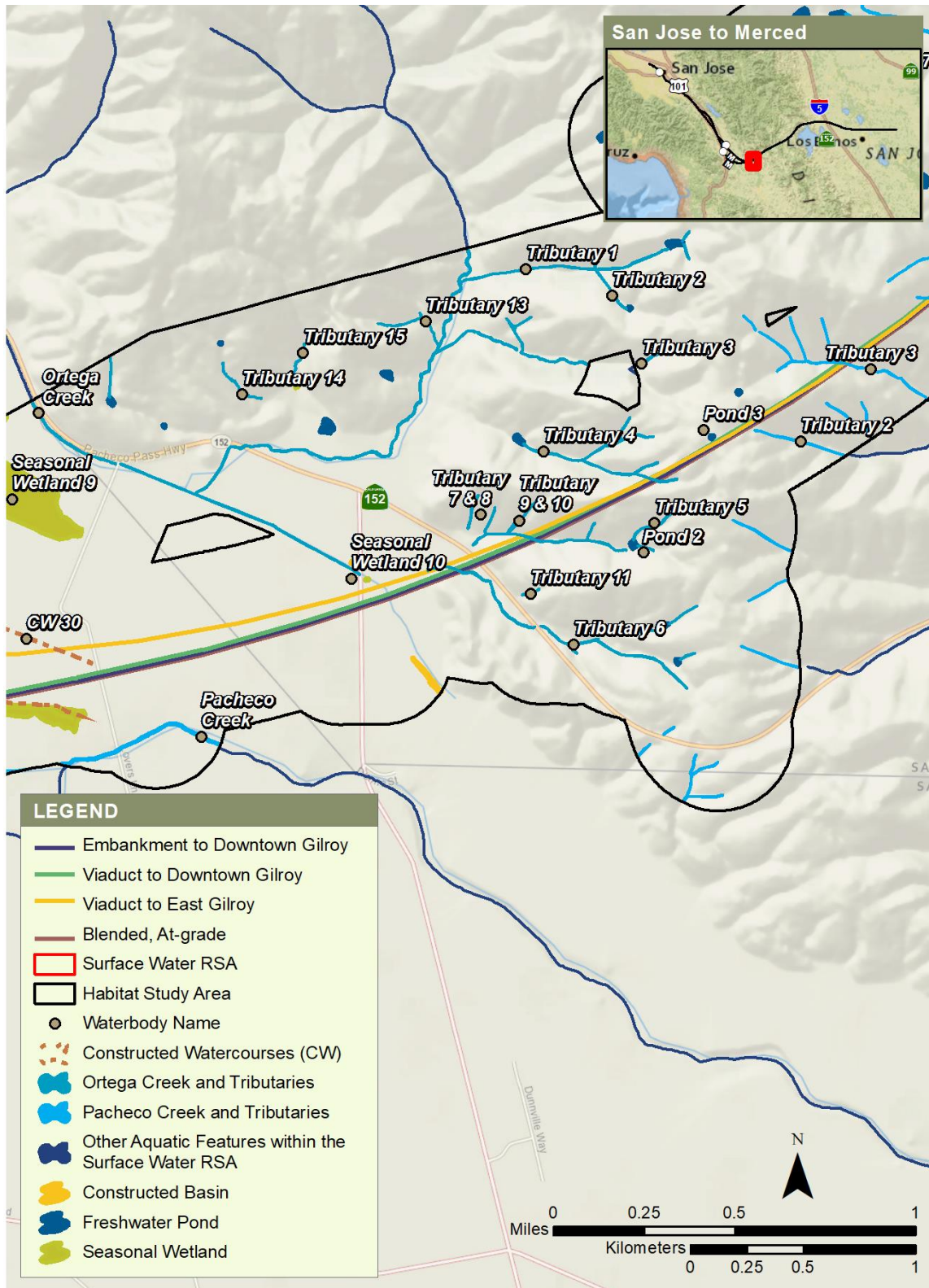
Figure 10 Waterbodies, Morgan Hill to Gilroy Subsection (7 of 10)



Source: Authority 2020; USGS 2007–2014 and 2016; CDFW 2016; SCVWD 2012 and 2016; Sowers et al. 2005

JANUARY 2020

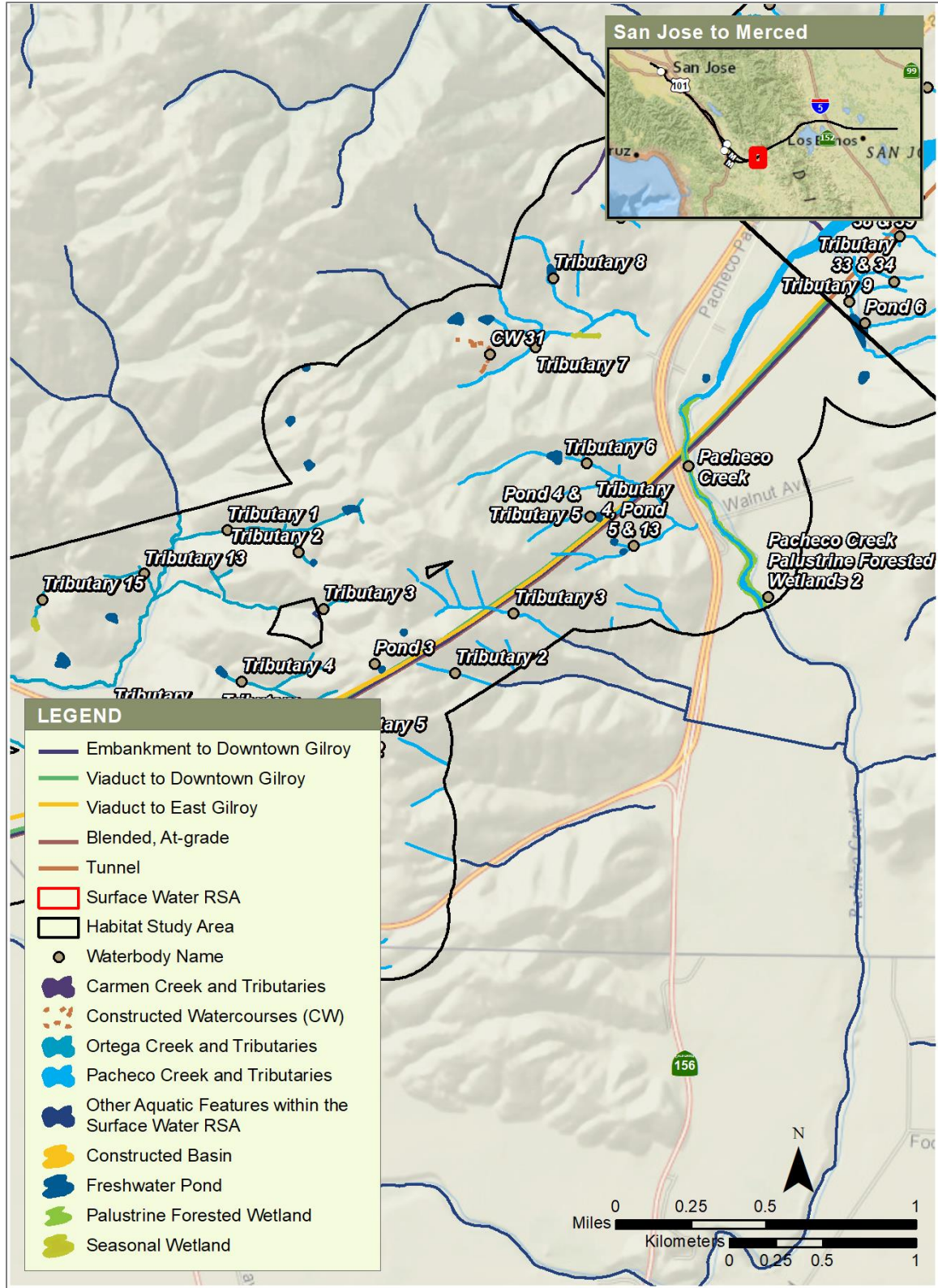
Figure 11 Waterbodies, Morgan Hill to Gilroy Subsection (8 of 10)



Source: Authority 2020; USGS 2007–2014 and 2016; CDFW 2016; SCVWD 2012 and 2016; Sowers et al. 2005

JANUARY 2020

Figure 12 Waterbodies, Morgan Hill to Gilroy Subsection (9 of 10)



Source: Authority 2020; USGS 2007–2014 and 2016; CDFW 2016; SCVWD 2012 and 2016; Sowers et al. 2005

JANUARY 2020

Figure 13 Waterbodies, Morgan Hill to Gilroy Subsection (10 of 10)



Source: Authority 2020; USGS 2007–2014 and 2016; CDFW 2016; SCVWD 2012 and 2016; Sowers et al. 2005

JANUARY 2020

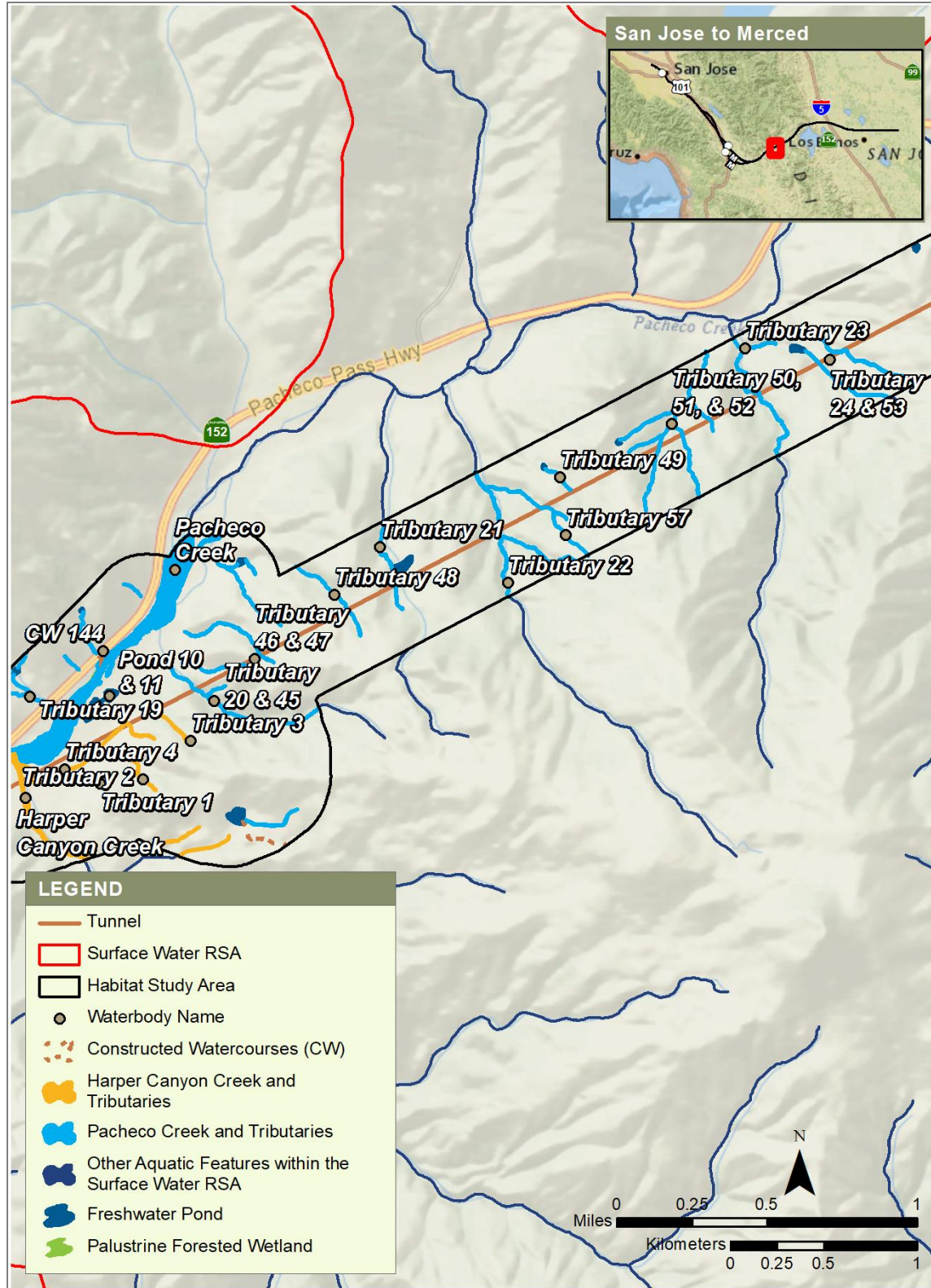
Figure 14 Waterbodies, Pacheco Pass Subsection (1 of 8)



Source: Authority 2020; USGS 2007–2014 and 2016; CDFW 2016; SCVWD 2012 and 2016; Sowers et al. 2005

JANUARY 2020

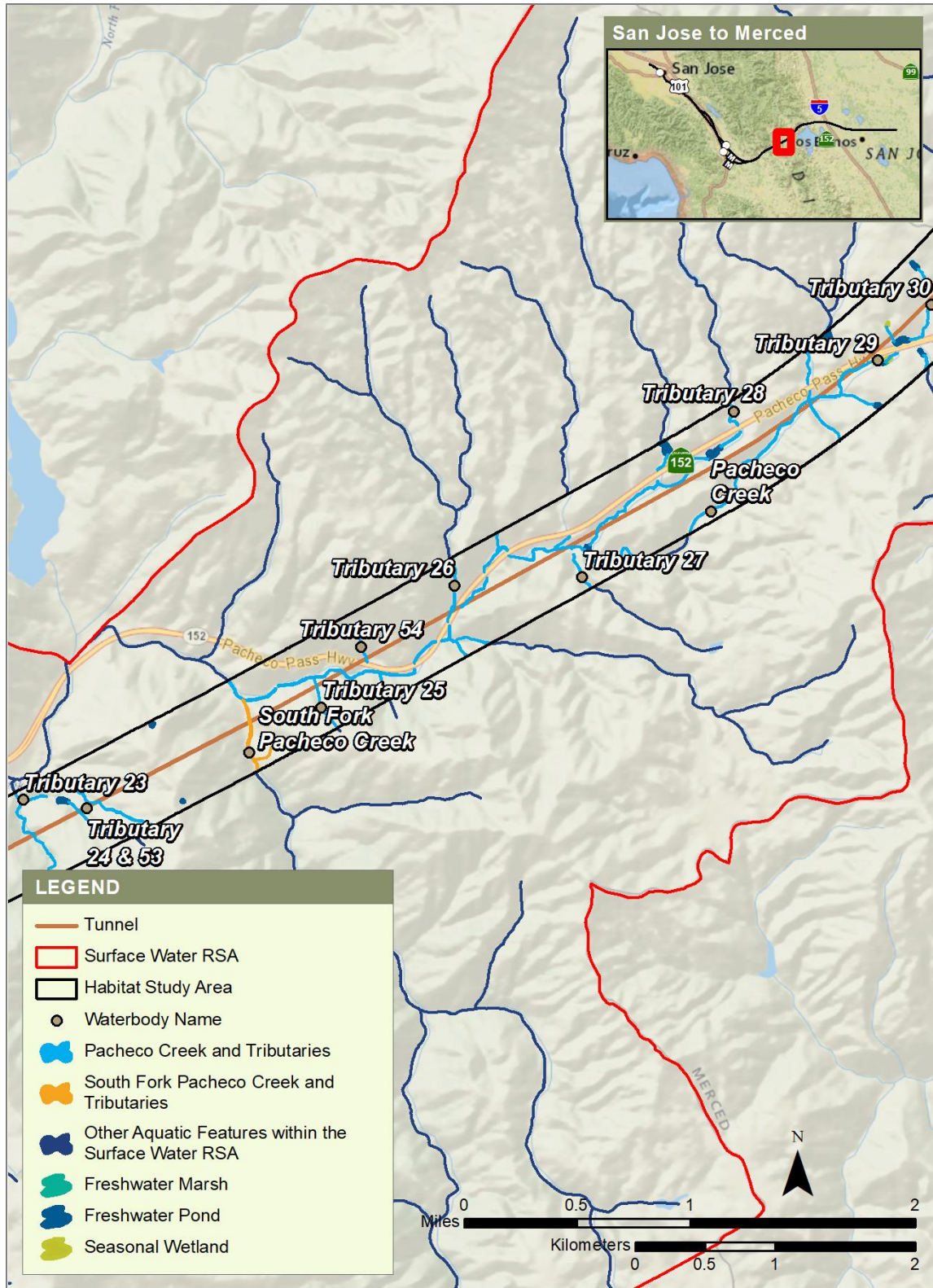
Figure 15 Waterbodies, Pacheco Pass Subsection (2 of 8)



Source: Authority 2020; USGS 2007–2014 and 2016; CDFW 2016; SCVWD 2012 and 2016; Sowers et al. 2005

JANUARY 2020

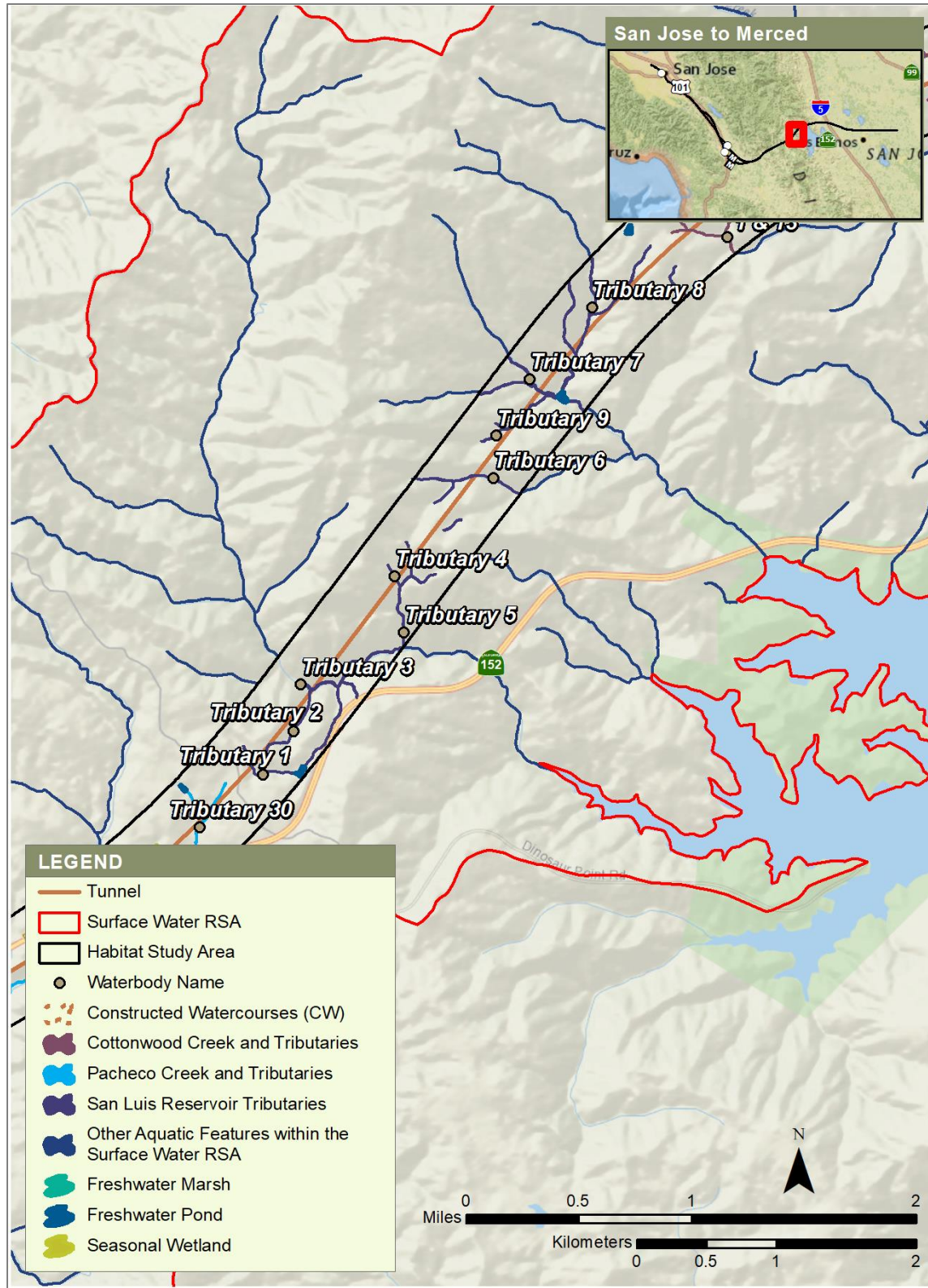
Figure 16 Waterbodies, Pacheco Pass Subsection (3 of 8)



Source: Authority 2020; USGS 2007–2014 and 2016; CDFW 2016; SCVWD 2012 and 2016; Sowers et al. 2005

JANUARY 2020

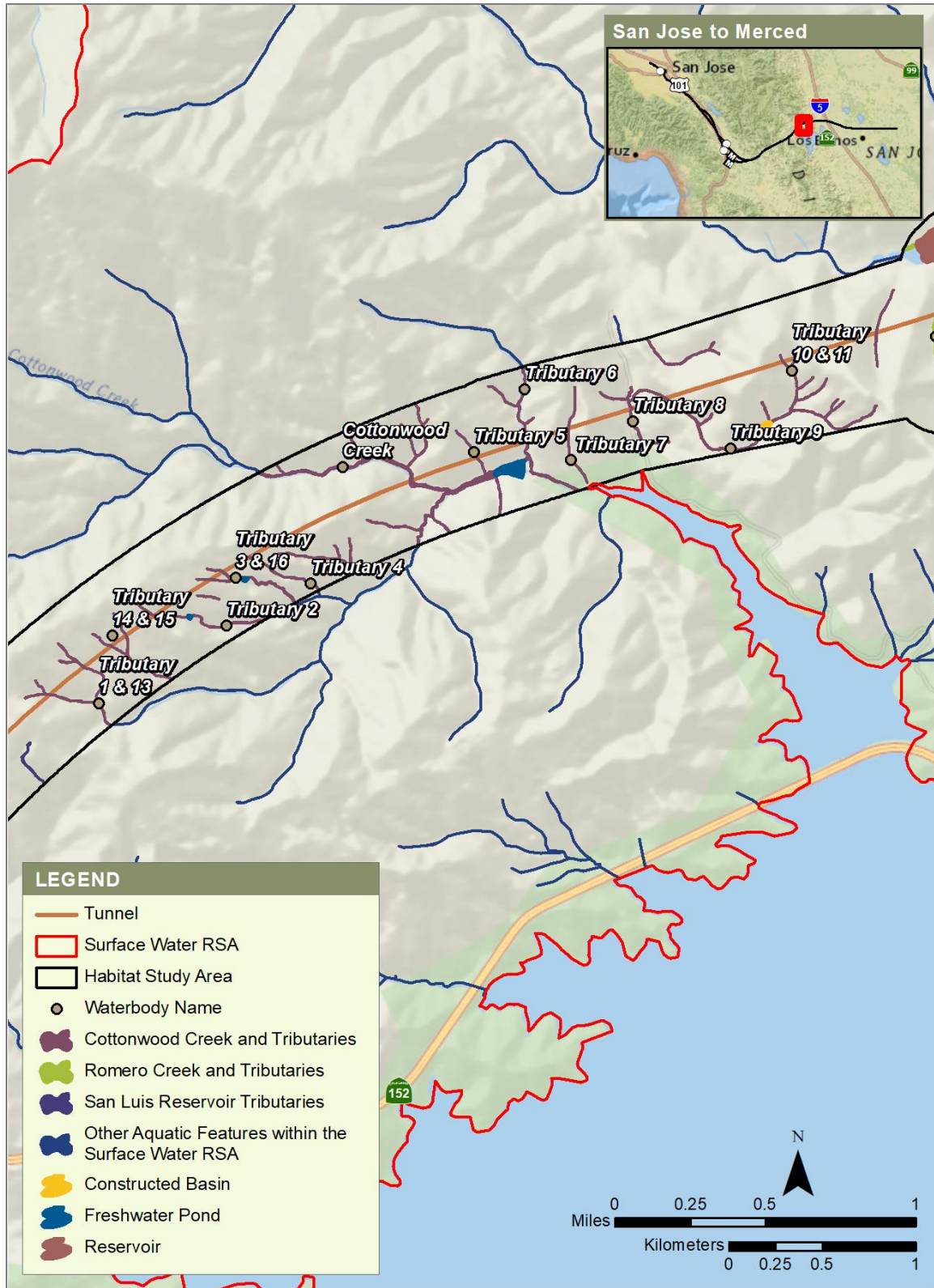
Figure 17 Waterbodies, Pacheco Pass Subsection (4 of 8)



Source: Authority 2020; USGS 2007–2014 and 2016; CDFW 2016; SCVWD 2012 and 2016; Sowers et al. 2005

JANUARY 2020

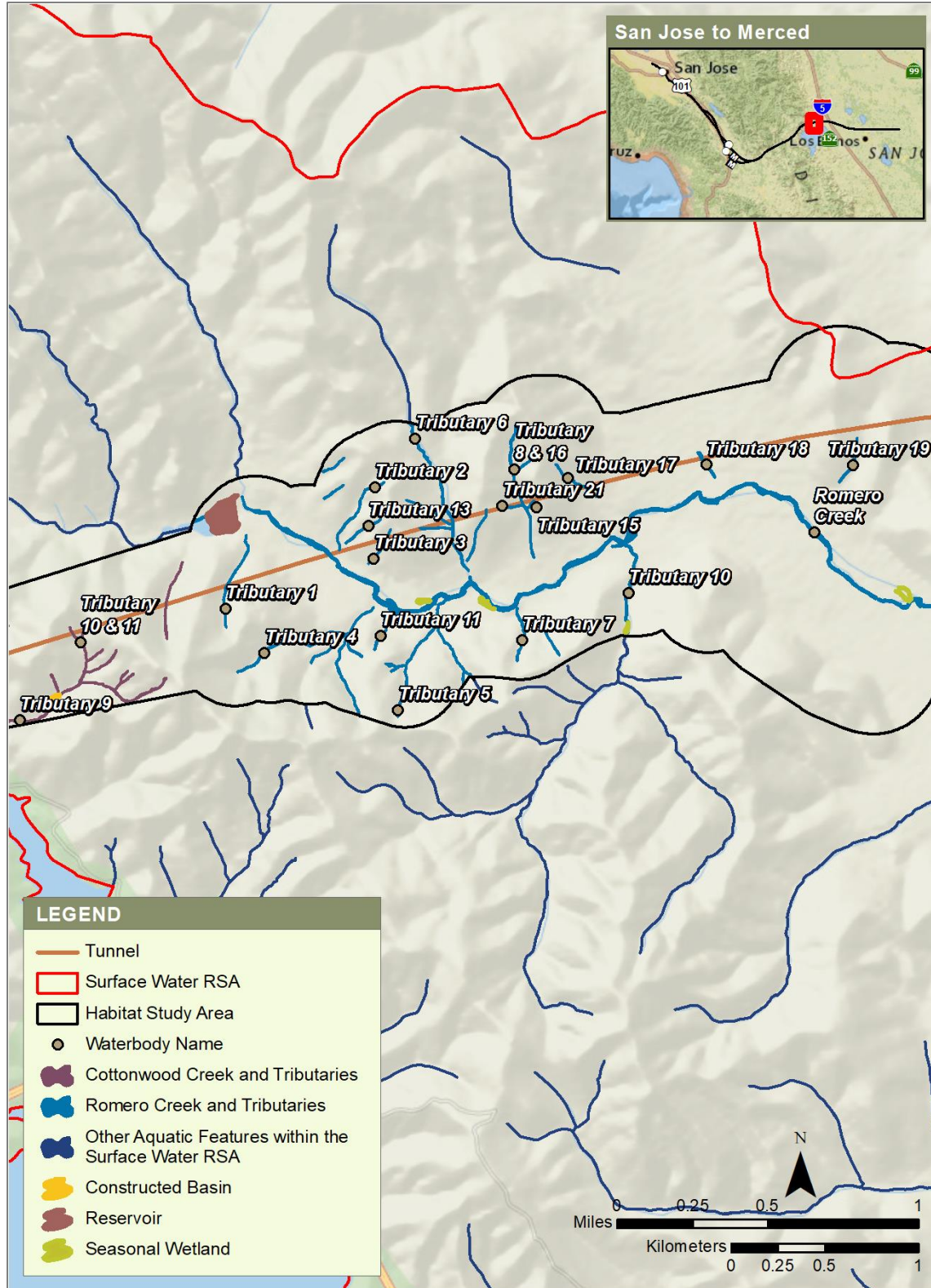
Figure 18 Waterbodies, Pacheco Pass Subsection (5 of 8)



Source: Authority 2020; USGS 2007–2014 and 2016; CDFW 2016; SCVWD 2012 and 2016; Sowers et al. 2005

JANUARY 2020

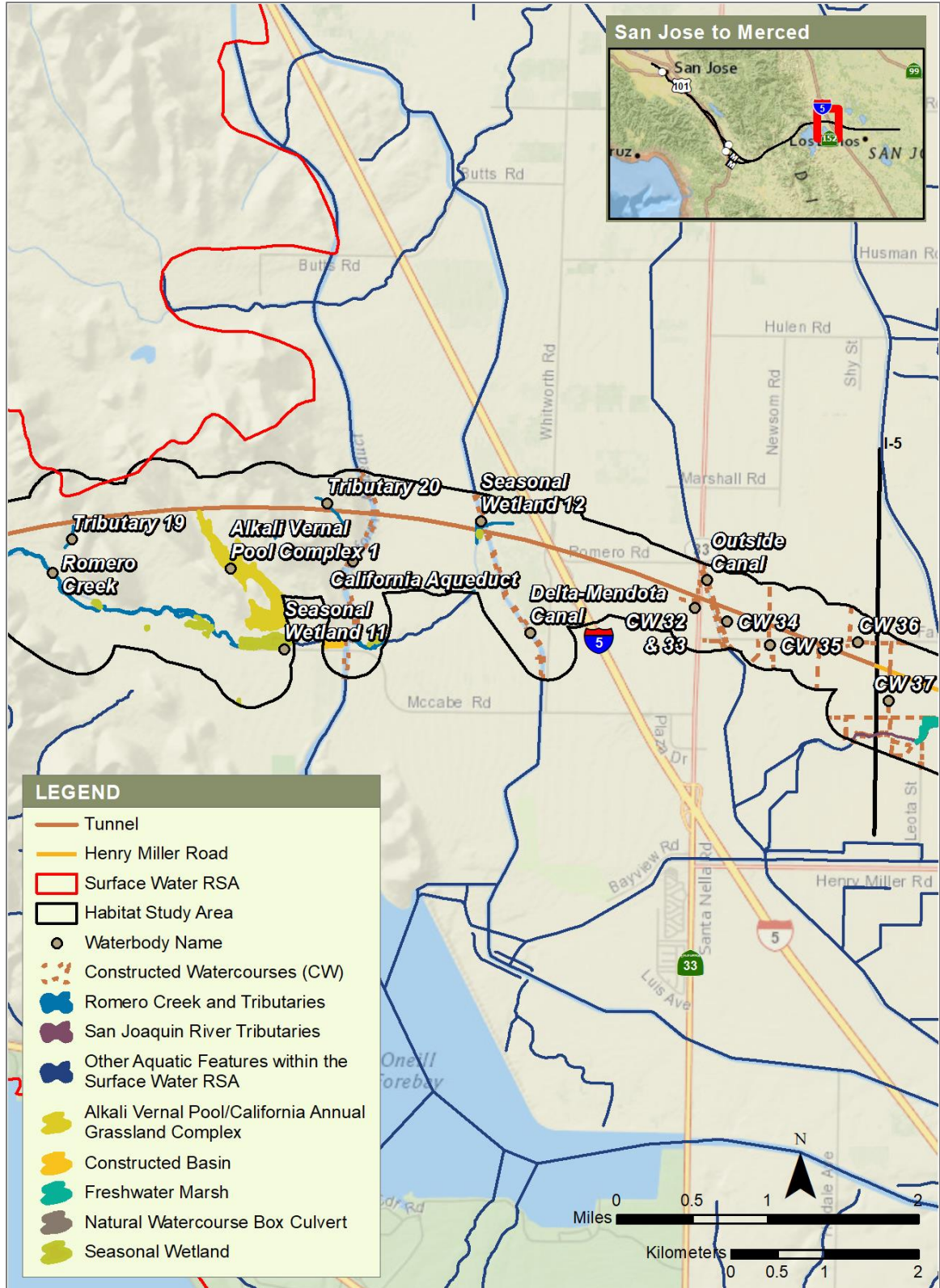
Figure 19 Waterbodies, Pacheco Pass Subsection (6 of 8)



Source: Authority 2020; USGS 2007–2014 and 2016; CDFW 2016; SCVWD 2012 and 2016; Sowers et al. 2005

JANUARY 2020

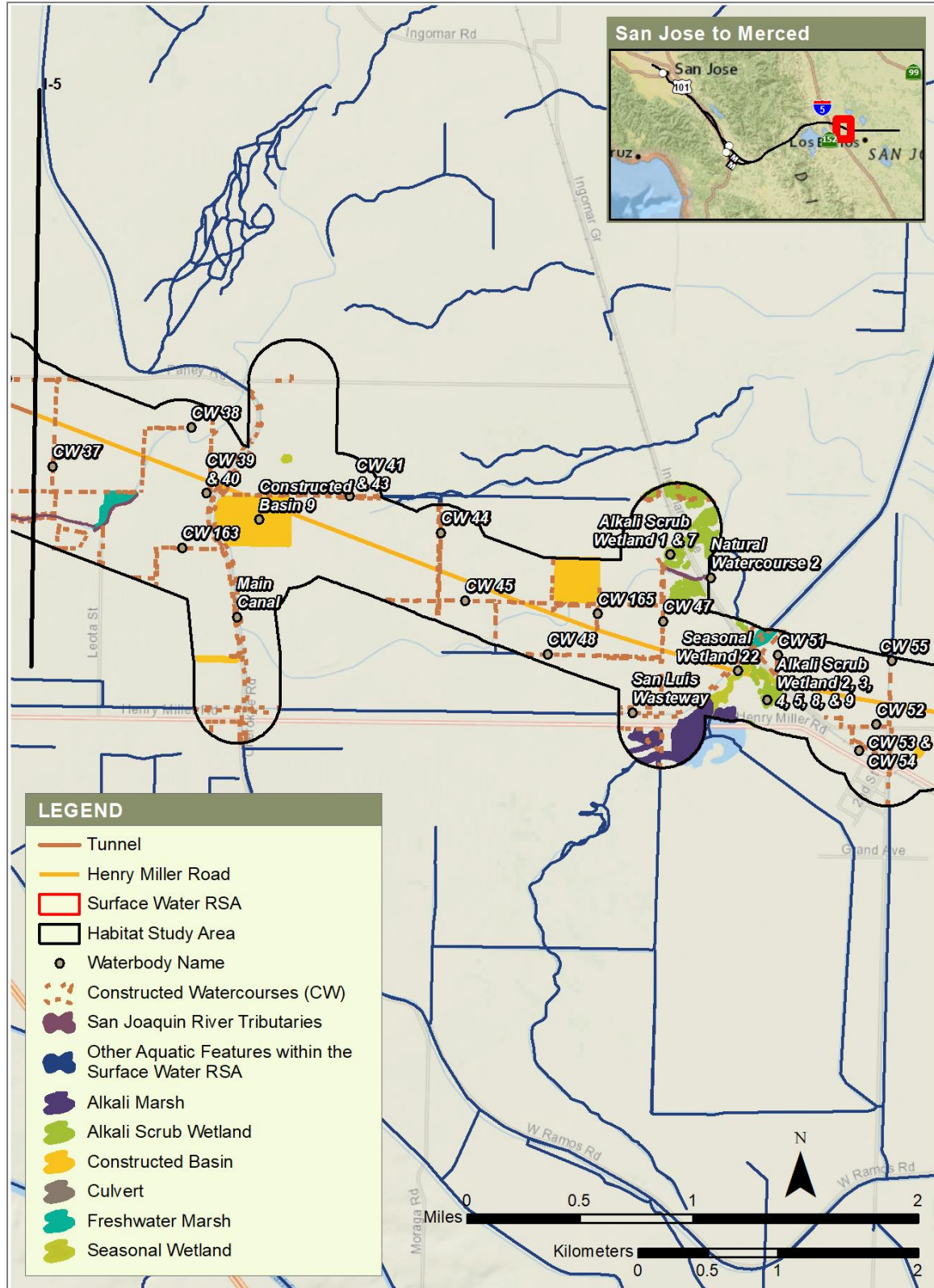
Figure 20 Waterbodies, Pacheco Pass Subsection (7 of 8)



Source: Authority 2020; USGS 2007–2014 and 2016; CDFW 2016; SCVWD 2012 and 2016; Sowers et al. 2005

JANUARY 2020

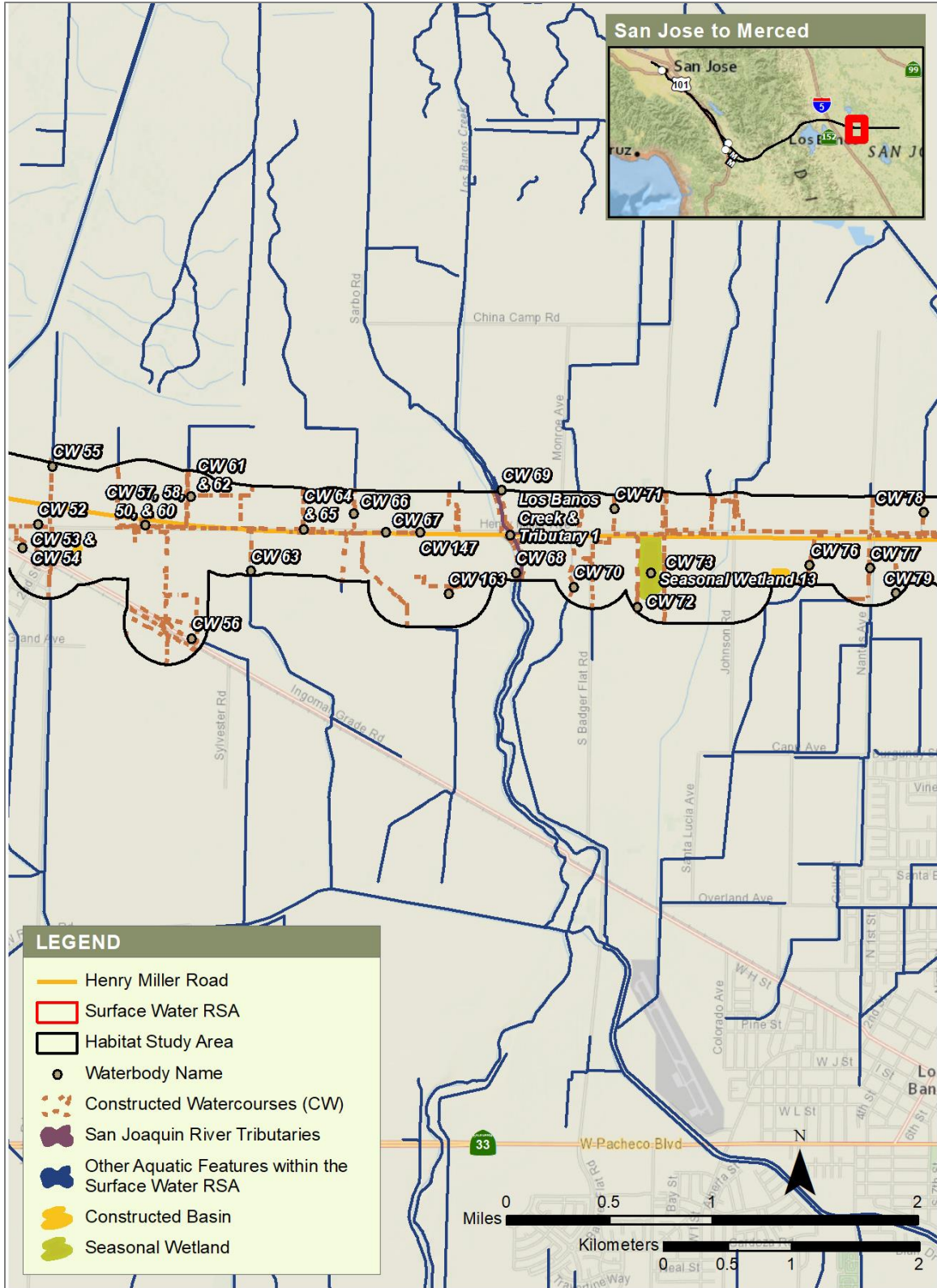
Figure 21 Waterbodies, Pacheco Pass Subsection (8 of 8)



Source: Authority 2020; USGS 2007–2014 and 2016; CDFW 2016; SCVWD 2012 and 2016; Sowers et al. 2005

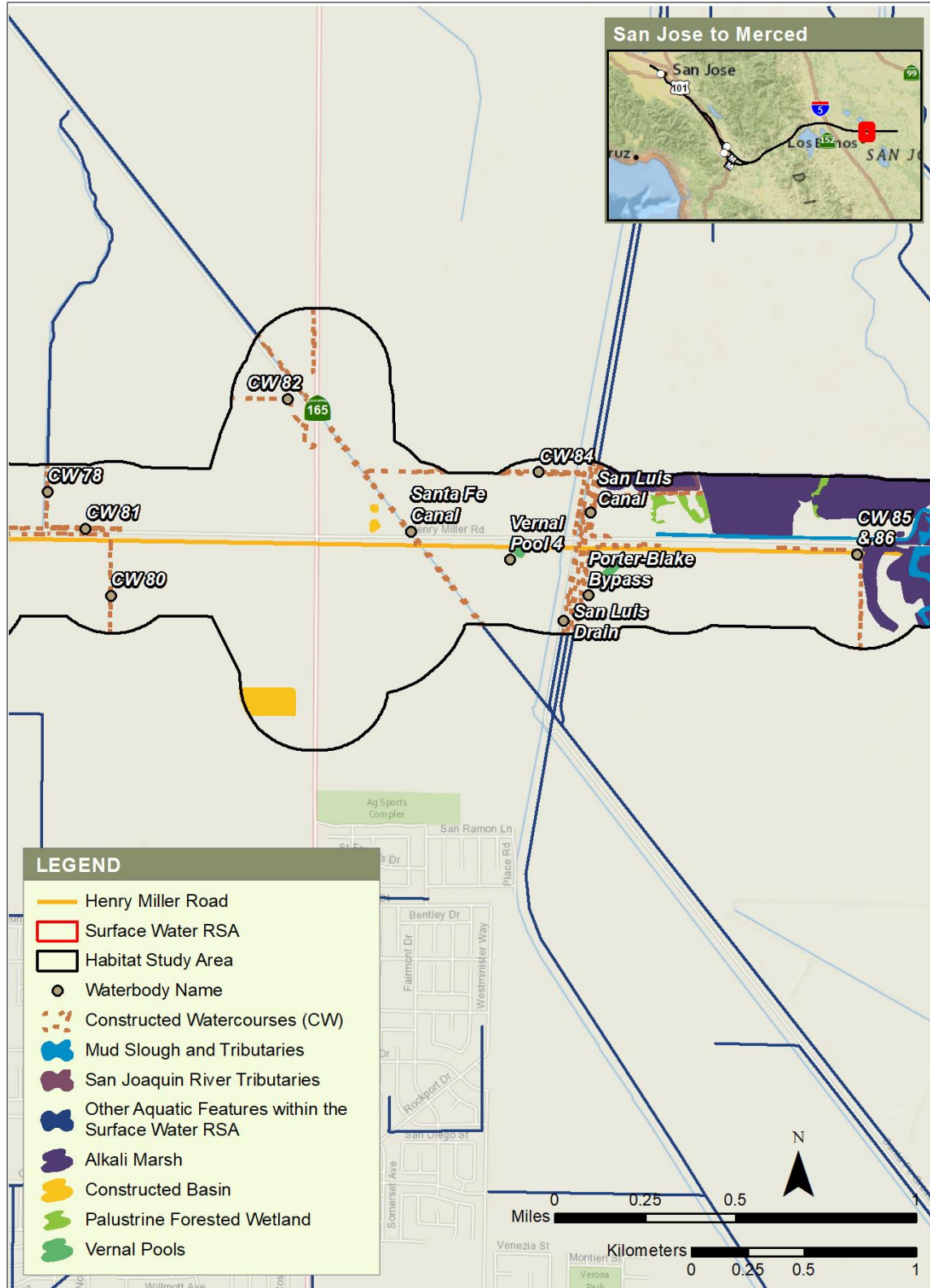
JANUARY 2020

Figure 22 Waterbodies, San Joaquin Valley Subsection (1 of 6)



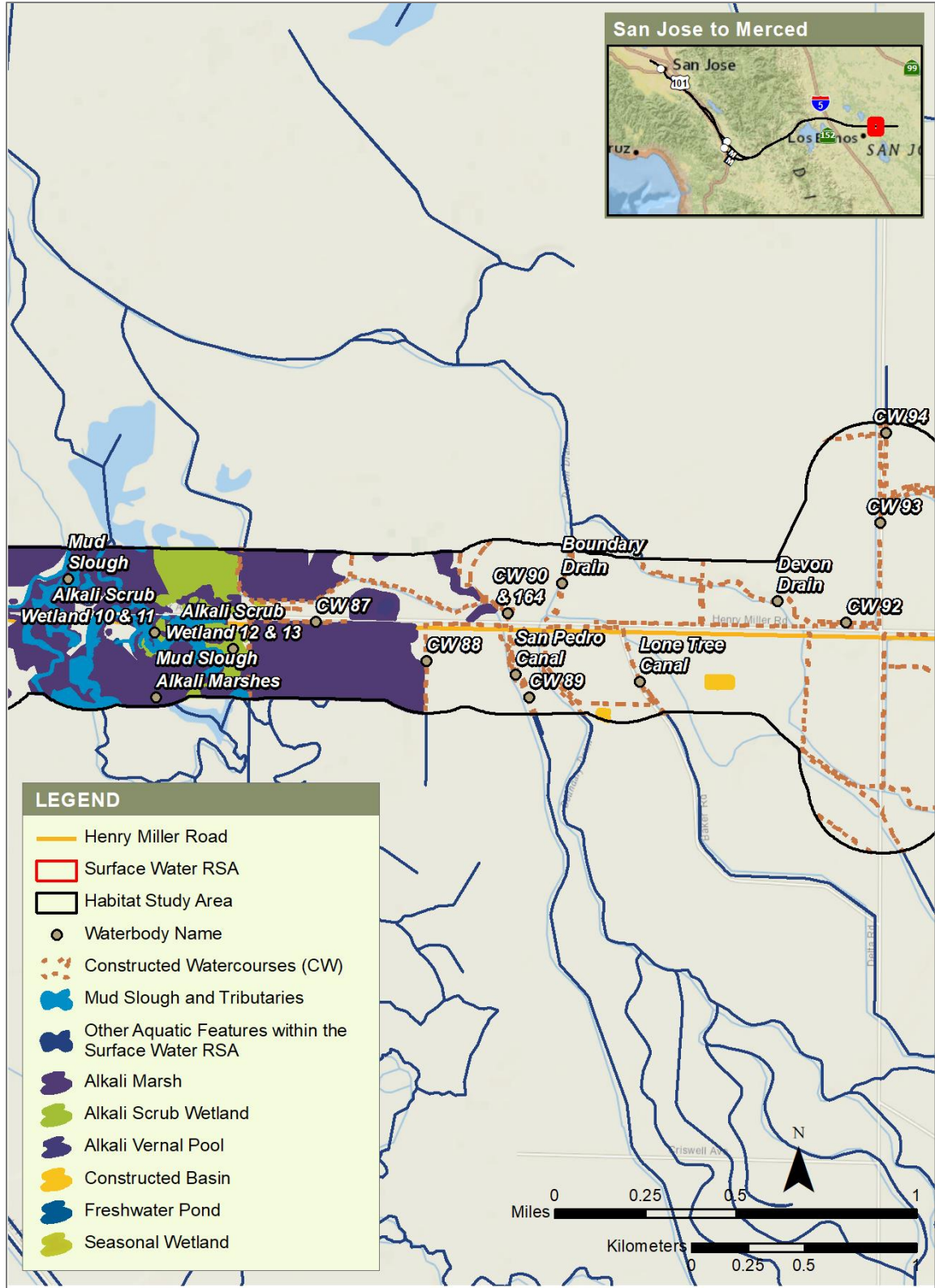
Source: Authority 2020; USGS 2007–2014 and 2016; CDFW 2016; SCVWD 2012 and 2016; Sowers et al. 2005
 JANUARY 2020

Figure 23 Waterbodies, San Joaquin Valley Subsection (2 of 6)



Source: Authority 2020; USGS 2007–2014 and 2016; CDFW 2016; SCVWD 2012 and 2016; Sowers et al. 2005
 JANUARY 2020

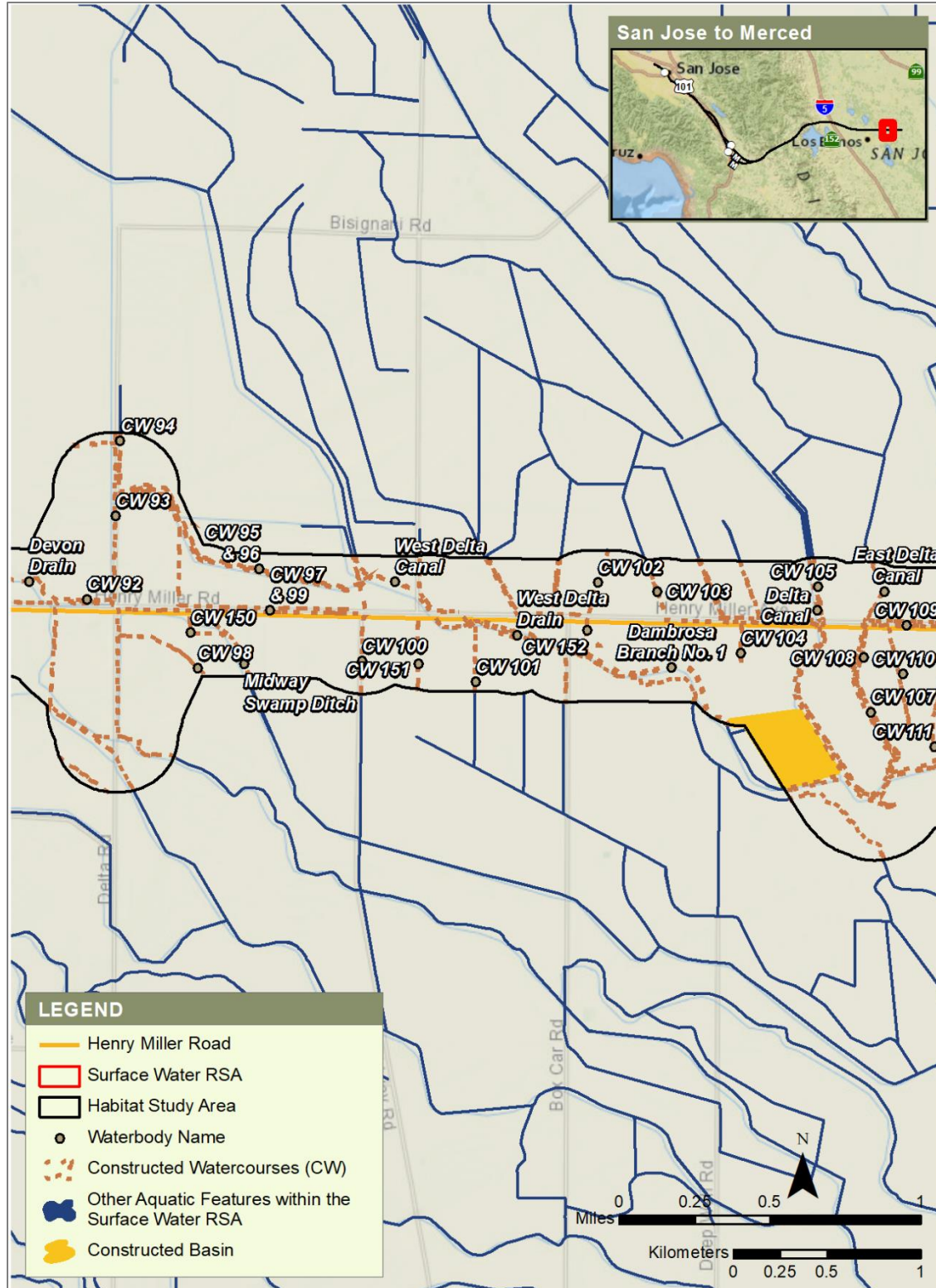
Figure 24 Waterbodies, San Joaquin Valley Subsection (3 of 6)



Source: Authority 2020; USGS 2007–2014 and 2016; CDFW 2016; SCVWD 2012 and 2016; Sowers et al. 2005

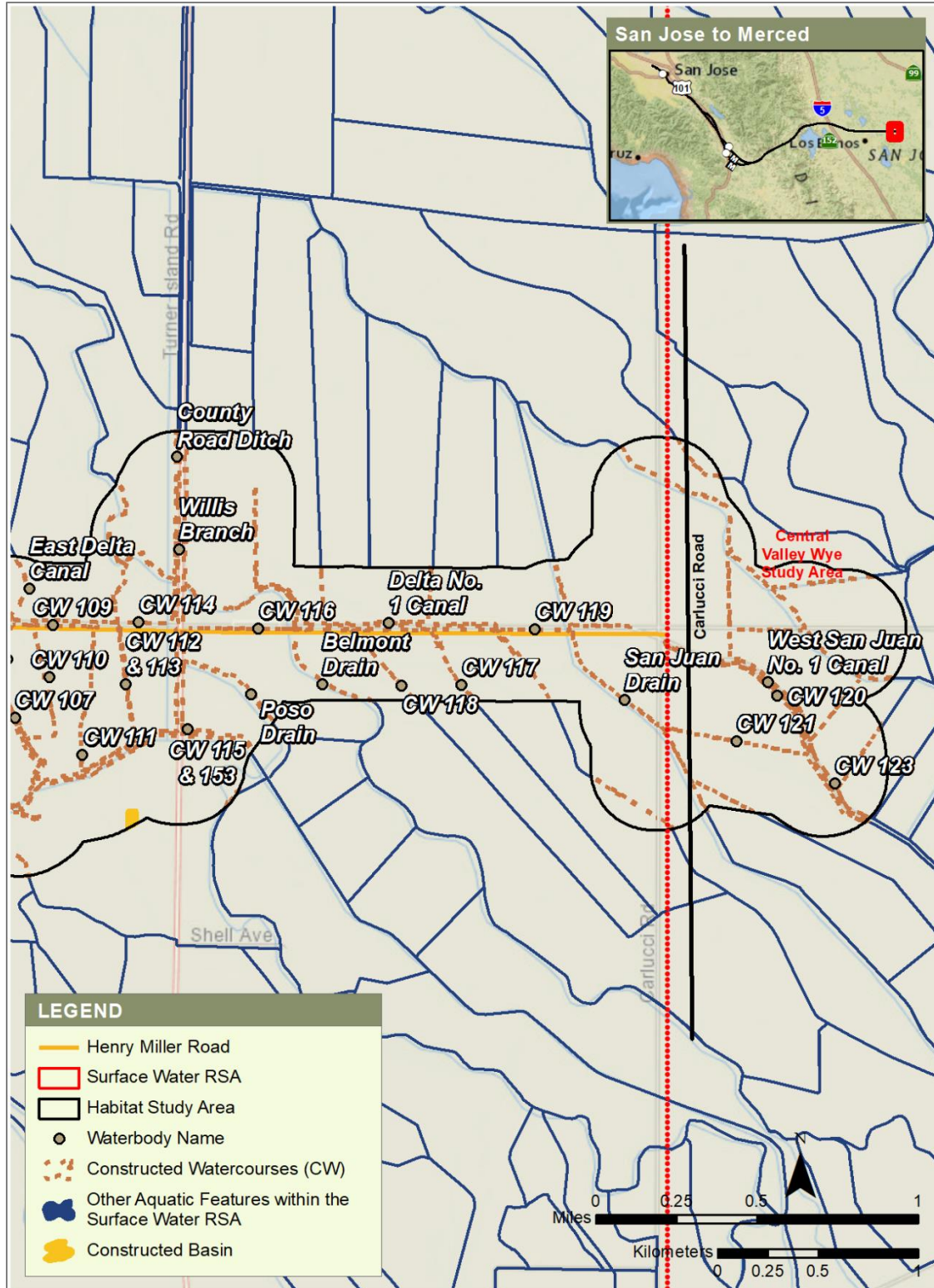
JANUARY 2020

Figure 25 Waterbodies, San Joaquin Valley Subsection (4 of 6)



Source: Authority 2020; USGS 2007–2014 and 2016; CDFW 2016; SCVWD 2012 and 2016; Sowers et al. 2005 JANUARY 2020

Figure 26 Waterbodies, San Joaquin Valley Subsection (5 of 6)



Source: Authority 2020; USGS 2007–2014 and 2016; CDFW 2016; SCVWD 2012 and 2016; Sowers et al. 2005 JANUARY 2020

Figure 27 Waterbodies, San Joaquin Valley Subsection (6 of 6)

REFERENCES

- California Department of Fish and Wildlife (CDFW). 2016. California Streams. GIS data. www.wildlife.ca.gov/Data/GIS/Clearinghouse (accessed June 20, 2016).
- California High Speed Rail Authority (Authority). 2020. San Jose to Merced Project Section Biological and Aquatic Resources Technical Report.
- HNTB. 2017. California High-Speed Train Project, San Jose to Merced, Composite Plans, Profiles, and Cross Sections, Draft PEPD Submittal. April 6, 2017.
- Sowers, J. M., R. W. Givler, and S. C. Thompson (Sowers et al.). 2005. Creek & Watershed Map of the Santa Clara Basin. Digital database, Version 1.1. William Lettis and Associates, Inc., Walnut Creek, CA, 1:24,000 scale. www.explore.museumca.org/creeks/WholeMaps/15_Morgan%20Hill%20Creek.pdf (accessed March 22, 2016).
- U.S. Geological Survey (USGS). 2007–2014. National Hydrography Dataset available on the World Wide Web (<http://nhd.usgs.gov>), accessed October 20, 2016.
- . 2016. The National Map Viewer. <https://viewer.nationalmap.gov/advanced-viewer/> Accessed October 20, 2016.
- Santa Clara Valley Water District (SCVWD). 2012. Watching Our Watersheds Interactive Map Layers, Central Santa Clara County. www.valleywater.org/WOW.aspx (accessed May 11, 2016).
- . 2016. Creeks and Canals in Santa Clara County. GIS database. Accessed May 18, 2016.