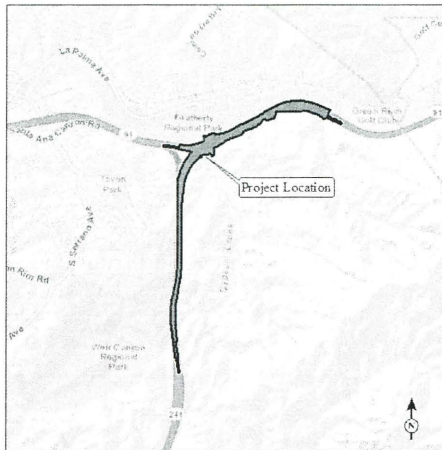




PUBLIC NOTICE

State Route 241/State Route 91 Tolloed Express Lanes Connector Project

Notice of Availability of the Approved FINAL SUPPLEMENTAL ENVIRONMENTAL IMPACT REPORT/ENVIRONMENTAL IMPACT STATEMENT



| | |
|-------------------------------------|--|
| <p>WHAT'S BEING PLANNED?</p> | <p>The purpose of the Proposed Project is to implement the build out of the Eastern Transportation Corridor (ETC), as approved in 1994. The overall objective of the ETC project was to accommodate traffic growth associated with planned and approved development in Orange County. The need for the Proposed Project is to address roadway deficiencies, including peak-hour demand exceeding capacity between the SR-241 and SR-91 connectors, lack of connectivity between tolled/managed facilities, and weaving between general purpose connectors and median lanes reducing traffic flow. Caltrans, in cooperation with the Foothill/Eastern Transportation Corridor Agency (F/ETCA), proposes to construct a tolled direct connector between SR-241 and the 91 Express Lanes. Currently, there is no direct connection between the SR-241 toll road and the 91 Express Lanes. A Preferred Alternative was identified by the Project Development Team, which is the Proposed Project (the Build Alternative) discussed in this document. The only substantial effects from the Proposed Project include impacts to paleontological resources and biological resources.</p> |
| <p>WHY THIS AD?</p> | <p>Caltrans, as the lead agency under the California Environmental Quality Act, and the designated National Environmental Policy Act agency, has approved the Final Supplemental Environmental Impact Report/Statement (Final Supplemental EIR/EIS) for the project.</p> |
| <p>WHAT'S AVAILABLE</p> | <p>The Final Supplemental EIR/EIS that describes the project and the potential environmental impacts of the project is now available to the public for review and comment between January 10, 2020 and February 18, 2020. The Final Supplemental EIR/EIS is also being distributed to those persons and parties who made substantive comments on the Draft Supplemental EIR/EIS or who requested a copy of the Final Supplemental EIR/EIS.</p> |
| <p>WHERE YOU COME IN</p> | <p>You can look at or obtain the Final Supplemental EIR/EIS during regular business hours at the Caltrans District 12 Office, 1750 East Fourth Street, Suite 100, Santa Ana, California 92705 on weekdays from 9:00 a.m. to 3 p.m. Copies of these materials are also available during regular business hours at: F/ETCA, 125 Pacifica, Suite 120, Irvine, California 92618; the East Anaheim Library, 8201 East Santa Ana Canyon Road, Anaheim, California 92808; the El Modena Branch Library, 380 South Hewes Street, Corona, California 92869; and the Corona Public Library, 650 South Main Street, Corona, California 92882. If you would like to make a comment on the Final Supplemental EIR/EIS, you may submit your written comment until 5 PM on February 18, 2020. Additional information on the project is also available online at: https://dot.ca.gov/caltrans-near-me/district-12/district-12-programs/district-12-environmental/sr-241-sr-91-interchange-project</p> |
| <p>CONTACT</p> | <p>For more information about this study, contact Smita Deshpande at (657) 328-6000 or email at D12TolloedExpressLaneConnector@dot.ca.gov. For other transportation matters, contact District 12 at (657) 328-6000.</p> |

Governor's Office of Planning & Research

JAN 10 2020

STATE CLEARINGHOUSE