



THE METROPOLITAN WATER DISTRICT
OF SOUTHERN CALIFORNIA

Office of the General Manager

August 29, 2016

Via Electronic and Regular Mail

Ms. Deanna Elliano
City of Hemet, Community Development Department
445 East Florida Avenue
Hemet, CA 92543

Dear Ms. Elliano:

Notice of Preparation of a Draft Subsequent Environmental Impact Report
for the Rancho Diamante Phase II Specific Plan Amendment (SPA 15-001), City of Hemet

The Metropolitan Water District of Southern California (Metropolitan) reviewed the public notice for the Rancho Diamante Phase II Specific Plan Amendment project (Project). The City of Hemet is acting as the Lead Agency under the California Environmental Quality Act (CEQA) for this project. The Project consists of construction of low and high density residential homes, open space recreation, commercial, industrial, a fire station, and public schools. Offsite improvements include construction of water and reclaimed water pipelines, drainage features, and street realignments. To accomplish the project activities, the project would also include amendments to the City's specific and general plans. The Project is located within the City of Hemet, in southwestern Riverside County. This letter contains Metropolitan's comments on the proposed project as an affected public agency.

Metropolitan reviewed the project description of the proposed Project and determined the following facilities, which we own and operate, are within the proposed Project area. The enclosed map shows these facilities in relation to the proposed Project. It will be necessary for the City to consider these facilities in its Plan amendments:

- San Diego Pipelines No. 1 and No. 2, which run in a northeasterly to southwesterly direction, are located within the proposed Project area. The two pipelines and facilities are located within permanent easement, within the proposed residential development that is described in the project description.
- San Diego Canal and Eastside Pipeline, which run in a northerly to southerly direction, are located along the eastern edge of the proposed Project area. The San Diego Canal and Eastside Pipeline and facilities are located within fee property, within the proposed residential development that is described in the project description.
- Diamond Valley Lake and property are located just south of the proposed Project area and are located within fee property.

RECEIVED

SEP 01 2016

Ms. Deanna Elliano

Page 2

August 29, 2016

We request the City evaluate impacts to Metropolitan's existing facilities that occur within and near the project's boundaries and propose mitigation measures, if appropriate. We are concerned with potential impacts to these facilities associated with future excavation, construction, utilities or any development that may result from implementation of the proposed project. Development and redevelopment associated with the proposed Project must not restrict any of Metropolitan's day-to-day operations and/or access to its facilities. Nor can the project affect the water quality of Metropolitan supplies by allowing for non-compatible land uses.

In order to avoid potential conflicts with Metropolitan's rights-of-way, we require that any design plans for any activity in the area of Metropolitan's pipelines or facilities be submitted for our review and written approval. Approval of the project where it could impact Metropolitan's property should be contingent on Metropolitan's approval of design plans for the project. Detailed prints of drawings of Metropolitan's pipelines and rights-of-way may be obtained by calling Metropolitan's Substructure Information Line at (213) 217-6564. To assist in preparing plans that are compatible with Metropolitan's facilities, easements, and properties, we have enclosed a copy of the "Guidelines for Developments in the Area of Facilities, Fee Properties, and/or Easements of The Metropolitan Water District of Southern California." Please note that all submitted designs or plans must clearly identify Metropolitan's facilities and rights-of-way.

We appreciate the opportunity to provide input to your planning process and look forward to receiving future documentation on this Project. If we can be of further assistance, please contact Ms. Brenda Marines at (213) 217-7902.

Very truly yours,



Deirdre West, Team Manager

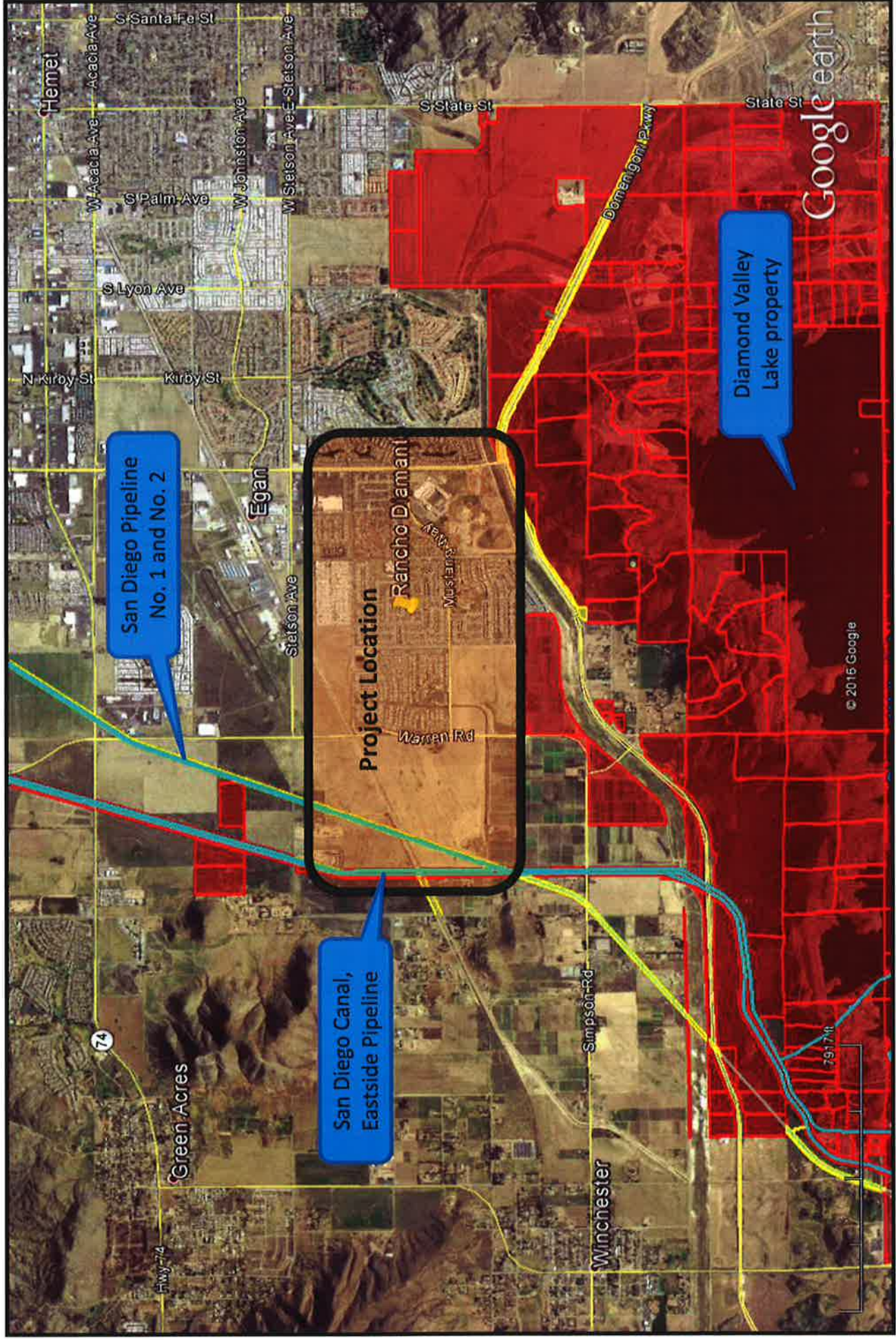
By Vikki Dee Bradshaw, Principal Environmental Specialist

BSM/bsm

EPT Project No. 20160817EXT

Enclosures: Planning Guidelines
Map

The Metropolitan Water District of Southern California and Rancho Diamante Phase II Project Location



Metropolitan Water District of Southern California.

Guidelines for Developments in the
Area of Facilities, Fee Properties, and/or Easements
of The Metropolitan Water District of Southern California

1. Introduction

a. The following general guidelines should be followed for the design of proposed facilities and developments in the area of Metropolitan's facilities, fee properties, and/or easements.

b. We require that 3 copies of your tentative and final record maps, grading, paving, street improvement, landscape, storm drain, and utility plans be submitted for our review and written approval as they pertain to Metropolitan's facilities, fee properties and/or easements, prior to the commencement of any construction work.

2. Plans, Parcel and Tract Maps

The following are Metropolitan's requirements for the identification of its facilities, fee properties, and/or easements on your plans, parcel maps and tract maps:

a. Metropolitan's fee properties and/or easements and its pipelines and other facilities must be fully shown and identified as Metropolitan's on all applicable plans.

b. Metropolitan's fee properties and/or easements must be shown and identified as Metropolitan's with the official recording data on all applicable parcel and tract maps.

c. Metropolitan's fee properties and/or easements and existing survey monuments must be dimensionally tied to the parcel or tract boundaries.

d. Metropolitan's records of surveys must be referenced on the parcel and tract maps.

e. Metropolitan's pipelines and other facilities, e.g. structures, manholes, equipment, survey monuments, etc. within its fee properties and/or easements must be protected from damage by the easement holder on Metropolitan's property or the property owner where Metropolitan has an easement, at no expense to Metropolitan. If the facility is a cathodic protection station it shall be located prior to any grading or excavation. The exact location, description and way of protection shall be shown on the related plans for the easement area.

4. Easements on Metropolitan's Property

a. We encourage the use of Metropolitan's fee rights-of-way by governmental agencies for public street and utility purposes, provided that such use does not interfere with Metropolitan's use of the property, the entire width of the property is accepted into the agency's public street system and fair market value is paid for such use of the right-of-way.

b. Please contact the Director of Metropolitan's Right of Way and Land Division, telephone (213) 250-6302, concerning easements for landscaping, street, storm drain, sewer, water or other public facilities proposed within Metropolitan's fee properties. A map and legal description of the requested easements must be submitted. Also, written evidence must be submitted that shows the city or county will accept the easement for the specific purposes into its public system. The grant of the easement will be subject to Metropolitan's rights to use its land for water pipelines and related purposes to the same extent as if such grant had not been made. There will be a charge for the easement. Please note that, if entry is required on the property prior to issuance of the easement, an entry permit must be obtained. There will also be a charge for the entry permit.

5. Landscaping

Metropolitan's landscape guidelines for its fee properties and/or easements are as follows:

a. A green belt may be allowed within Metropolitan's fee property or easement.

b. All landscape plans shall show the location and size of Metropolitan's fee property and/or easement and the location and size of Metropolitan's pipeline or other facilities therein.

a. Permanent structures, including catch basins, manholes, power poles, telephone riser boxes, etc., shall not be located within its fee properties and/or easements.

b. We request that permanent utility structures within public streets, in which Metropolitan's facilities are constructed under the Metropolitan Water District Act, be placed as far from our pipeline as possible, but not closer than 5 feet from the outside of our pipeline.

c. The installation of utilities over or under Metropolitan's pipeline(s) must be in accordance with the requirements shown on the enclosed prints of Drawings Nos. C-11632 and C-9547. Whenever possible we request a minimum of one foot clearance between Metropolitan's pipe and your facility. Temporary support of Metropolitan's pipe may also be required at undercrossings of its pipe in an open trench. The temporary support plans must be reviewed and approved by Metropolitan.

d. Lateral utility crossings of Metropolitan's pipelines must be as perpendicular to its pipeline alignment as practical. Prior to any excavation our pipeline shall be located manually and any excavation within two feet of our pipeline must be done by hand. This shall be noted on the appropriate drawings.

e. Utilities constructed longitudinally within Metropolitan's rights-of-way must be located outside the theoretical trench prism for uncovering its pipeline and must be located parallel to and as close to its rights-of-way lines as practical.

f. When piping is jacked or installed in jacked casing or tunnel under Metropolitan's pipe, there must be at least two feet of vertical clearance between the bottom of Metropolitan's pipe and the top of the jacked pipe, jacked casing or tunnel. We also require that detail drawings of the shoring for the jacking or tunneling pits be submitted for our review and approval. Provisions must be made to grout any voids around the exterior of the jacked pipe, jacked casing or tunnel. If the piping is installed in a jacked casing or tunnel the annular space between the piping and the jacked casing or tunnel must be filled with grout.

j. Potholing of Metropolitan's pipeline is required if the vertical clearance between a utility and Metropolitan's pipeline is indicated on the plan to be one foot or less. If the indicated clearance is between one and two feet, potholing is suggested. Metropolitan will provide a representative to assist others in locating and identifying its pipeline. Two-working days notice is requested.

k. Adequate shoring and bracing is required for the full depth of the trench when the excavation encroaches within the zone shown on Figure 4.

l. The location of utilities within Metropolitan's fee property and/or easement shall be plainly marked to help prevent damage during maintenance or other work done in the area. Detectable tape over buried utilities should be placed a minimum of 12 inches above the utility and shall conform to the following requirements:

1) Water pipeline: A two-inch blue warning tape shall be imprinted with:

"CAUTION BURIED WATER PIPELINE"

2) Gas, oil, or chemical pipeline: A two-inch yellow warning tape shall be imprinted with:

"CAUTION BURIED _____ PIPELINE"

3) Sewer or storm drain pipeline: A two-inch green warning tape shall be imprinted with:

"CAUTION BURIED _____ PIPELINE"

4) Electric, street lighting, or traffic signals conduit: A two-inch red warning tape shall be imprinted with:

"CAUTION BURIED _____ CONDUIT"

5) Telephone, or television conduit: A two-inch orange warning tape shall be imprinted with:

"CAUTION BURIED _____ CONDUIT"

o. Control cables connected with the operation of Metropolitan's system are buried within streets, its fee properties and/or easements. The locations and elevations of these cables shall be shown on the drawings. The drawings shall note that prior to any excavation in the area, the control cables shall be located and measures shall be taken by the contractor to protect the cables in place.

p. Metropolitan is a member of Underground Service Alert (USA). The contractor (excavator) shall contact USA at 1-800-422-4133 (Southern California) at least 48 hours prior to starting any excavation work. The contractor will be liable for any damage to Metropolitan's facilities as a result of the construction.

8. Paramount Right

Facilities constructed within Metropolitan's fee properties and/or easements shall be subject to the paramount right of Metropolitan to use its fee properties and/or easements for the purpose for which they were acquired. If at any time Metropolitan or its assigns should, in the exercise of their rights, find it necessary to remove any of the facilities from the fee properties and/or easements, such removal and replacement shall be at the expense of the owner of the facility.

9. Modification of Metropolitan's Facilities

When a manhole or other of Metropolitan's facilities must be modified to accommodate your construction or reconstruction, Metropolitan will modify the facilities with its forces. This should be noted on the construction plans. The estimated cost to perform this modification will be given to you and we will require a deposit for this amount before the work is performed. Once the deposit is received, we will schedule the work. Our forces will coordinate the work with your contractor. Our final billing will be based on actual cost incurred, and will include materials, construction, engineering plan review, inspection, and administrative overhead charges calculated in accordance with Metropolitan's standard accounting practices. If the cost is less than the deposit, a refund will be made; however, if the cost exceeds the deposit, an invoice will be forwarded for payment of the additional amount.

imposes loads no greater than AASHTO H-10. If the cover is between two and three feet, equipment must be restricted to that of a Caterpillar D-4 tract-type tractor. If the cover is less than two feet, only hand equipment may be used. Also, if the contractor plans to use any equipment over Metropolitan's pipeline which will impose loads greater than AASHTO H-20, it will be necessary to submit the specifications of such equipment for our review and approval at least one week prior to its use. More restrictive requirements may apply to the loading guideline over the San Diego Pipelines 1 and 2, portions of the Orange County Feeder, and the Colorado River Aqueduct. Please contact us for loading restrictions on all of Metropolitan's pipelines and conduits.

b. The existing cover over the pipeline shall be maintained unless Metropolitan determines that proposed changes do not pose a hazard to the integrity of the pipeline or an impediment to its maintenance.

13. Blasting

a. At least 20 days prior to the start of any drilling for rock excavation blasting, or any blasting, in the vicinity of Metropolitan's facilities, a two-part preliminary conceptual plan shall be submitted to Metropolitan as follows:

b. Part 1 of the conceptual plan shall include a complete summary of proposed transportation, handling, storage, and use of explosions.

c. Part 2 shall include the proposed general concept for blasting, including controlled blasting techniques and controls of noise, fly rock, airblast, and ground vibration.

14. CEQA Requirements

a. When Environmental Documents Have Not Been Prepared

1) Regulations implementing the California Environmental Quality Act (CEQA) require that Metropolitan have an opportunity to consult with the agency or consultants preparing any environmental documentation. We are required to review and consider the environmental effects of the project as shown in the Negative Declaration or Environmental Impact Report (EIR) prepared for your project before committing Metropolitan to approve your request.

giving Metropolitan's comments, requirements and/or approval that will require 8 man-hours or less of effort is typically performed at no cost to the developer, unless a facility must be modified where Metropolitan has superior rights. If an engineering review and letter response requires more than 8 man-hours of effort by Metropolitan to determine if the proposed facility or development is compatible with its facilities, or if modifications to Metropolitan's manhole(s) or other facilities will be required, then all of Metropolitan's costs associated with the project must be paid by the developer, unless the developer has superior rights.

b. A deposit of funds will be required from the developer before Metropolitan can begin its detailed engineering plan review that will exceed 8 hours. The amount of the required deposit will be determined after a cursory review of the plans for the proposed development.

c. Metropolitan's final billing will be based on actual cost incurred, and will include engineering plan review, inspection, materials, construction, and administrative overhead charges calculated in accordance with Metropolitan's standard accounting practices. If the cost is less than the deposit, a refund will be made; however, if the cost exceeds the deposit, an invoice will be forwarded for payment of the additional amount. Additional deposits may be required if the cost of Metropolitan's review exceeds the amount of the initial deposit.

16. Caution

We advise you that Metropolitan's plan reviews and responses are based upon information available to Metropolitan which was prepared by or on behalf of Metropolitan for general record purposes only. Such information may not be sufficiently detailed or accurate for your purposes. No warranty of any kind, either express or implied, is attached to the information therein conveyed as to its accuracy, and no inference should be drawn from Metropolitan's failure to comment on any aspect of your project. You are therefore cautioned to make such surveys and other field investigations as you may deem prudent to assure yourself that any plans for your project are correct.

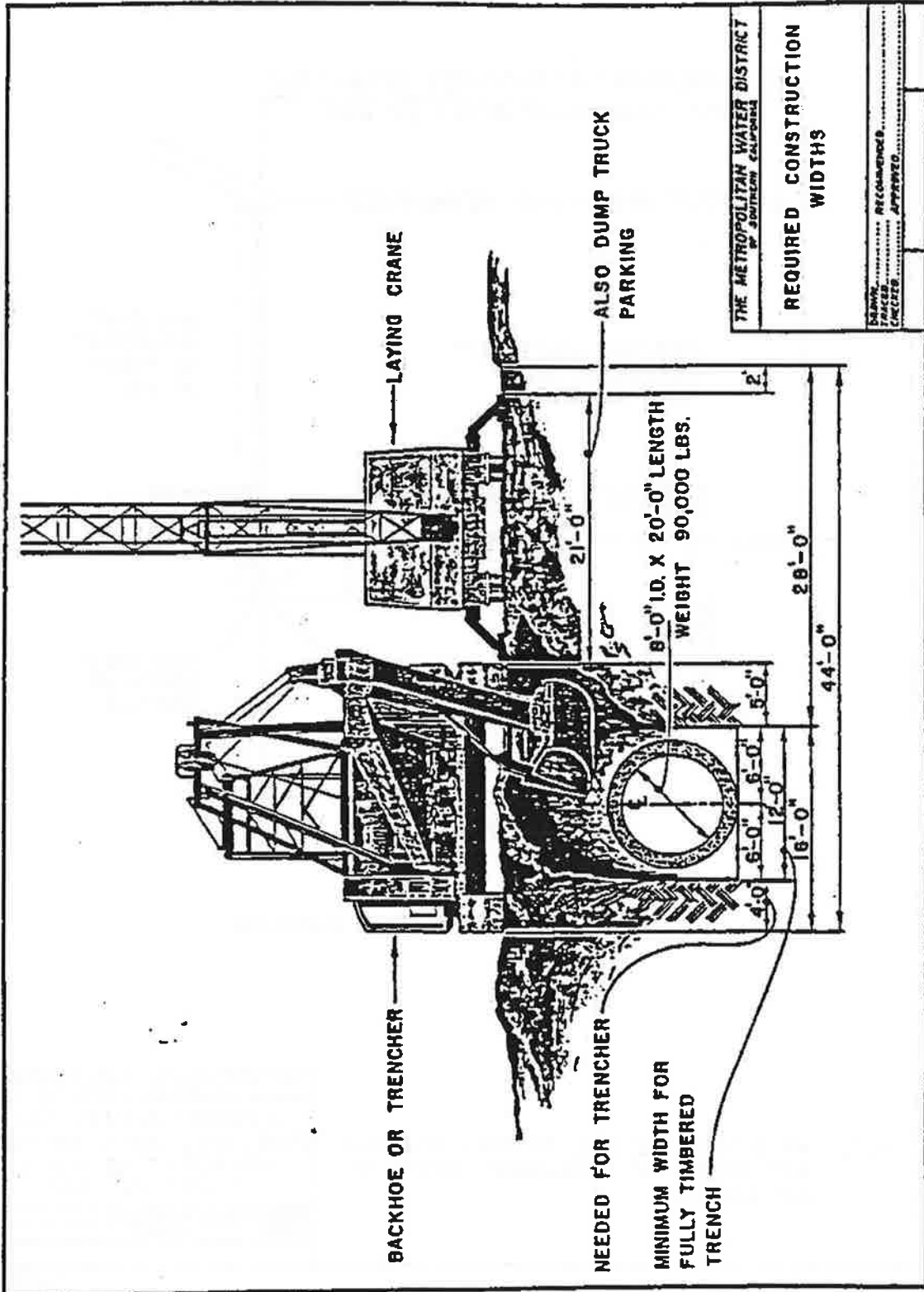
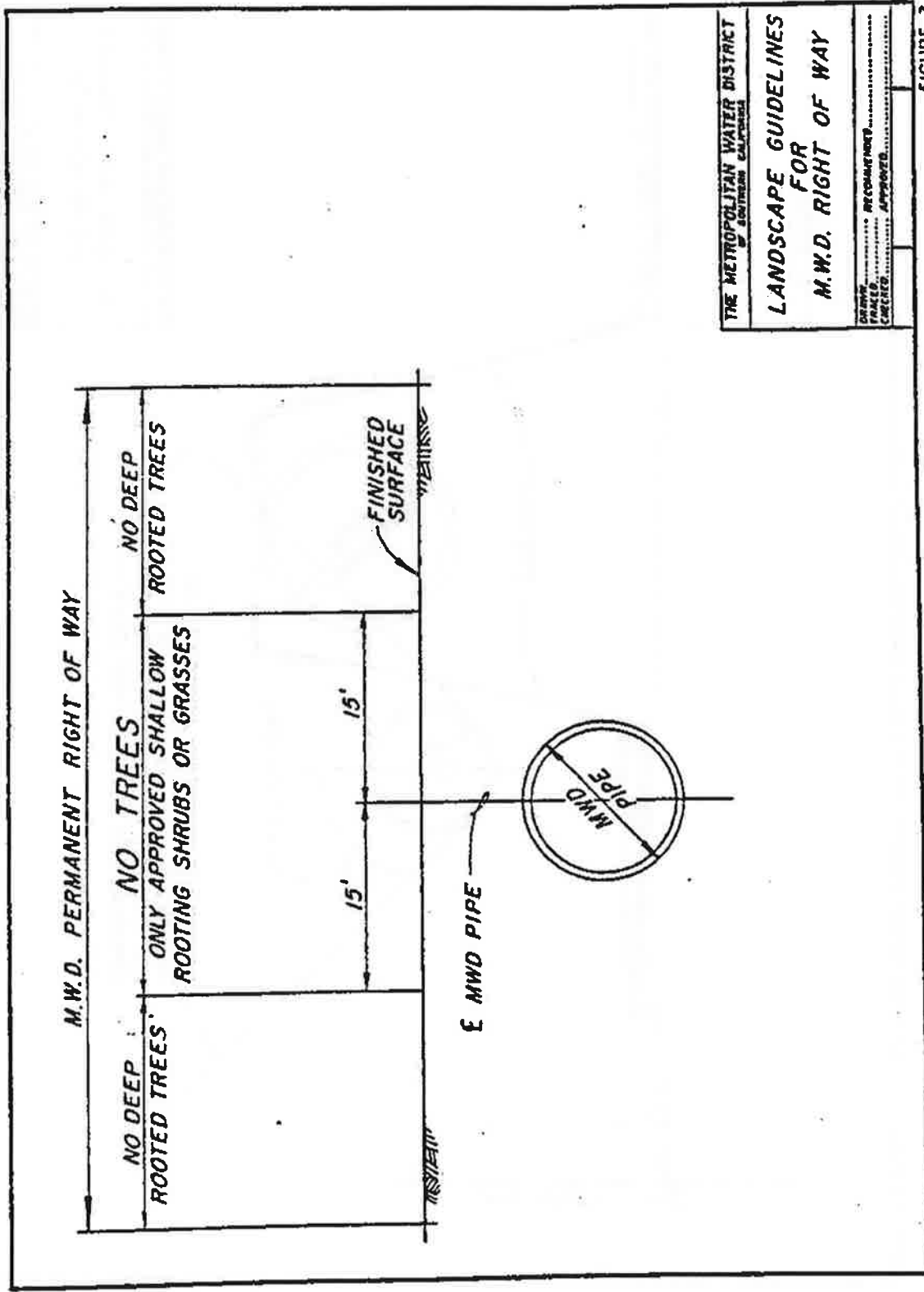


FIGURE 1



THE METROPOLITAN WATER DISTRICT
 OF SOUTHERN CALIFORNIA

**LANDSCAPE GUIDELINES
 FOR
 M.W.D. RIGHT OF WAY**

DRAWN BY RECOMMENDED BY
 CHECKED BY APPROVED BY

FIGURE 3

