

CULTURAL RESOURCES ASSESSMENT

**RANCHO DIAMANTE PROJECT
CITY OF HEMET
RIVERSIDE COUNTY, CALIFORNIA**

LSA

December 2019

CULTURAL RESOURCES ASSESSMENT

**RANCHO DIAMANTE PROJECT
CITY OF HEMET
RIVERSIDE COUNTY, CALIFORNIA**

Prepared for:

City of Hemet
H.P. Kang Associate Planner
445 E. Florida Avenue
Hemet, California 92543

Prepared by:

Riordan Goodwin, Archaeologist
LSA Associates, Inc.
1500 Iowa Avenue
Riverside, California 92507
(951) 781-9310

LSA Project No. HET1601

National Archaeological Database Information (NADB):

Type of Study: Reconnaissance Survey

Sites Recorded: 33-015743/CA-RIV-8196, 33-015900/CA-RIV-15900 (updates); LSA-HET1601-S-1

USGS 7.5' Quadrangle: Winchester, California

Acreage: ~258.7 acres

Key Words: Hemet, Phase I Survey, positive results, historic period resources



December 2019

MANAGEMENT SUMMARY

The City of Hemet retained LSA Associates, Inc. to conduct a cultural resources assessment for the proposed construction of the Rancho Diamante Project in the City of Hemet, in Riverside County, California. This cultural resources assessment was completed pursuant to the California Environmental Quality Act (CEQA).

The cultural resources assessment included records searches, additional research, and field surveys of the project area. Three previously documented cultural resources were identified within the project area: a still-active subsurface aqueduct (33-015734), an abandoned railroad line (33-015743), and the former site of an early 20th century farm (33-015900). One additional linear resource that transects the project area (Hemet Channel) was also documented. Although previously evaluated as not significant under CEQA, the farm site retains some potential for subsurface deposits. The project is also bounded by a segment of the historic period San Jacinto and Pleasant Valley Canal (33-005202). Therefore, due the presence of historic period cultural resources within and adjacent to the project area, there is some sensitivity for undocumented subsurface deposits of potential significance or local interest, and the previous recommendation for archaeological monitoring is carried forward.

In the event previously undocumented archaeological resources are identified during earthmoving activities, further work in the area should be halted until a qualified archaeologist has assessed the nature of the find(s) and has determined appropriate treatment.

If human remains are encountered, State Health and Safety Code Section 7050.5 states that no further disturbance shall occur until the County Coroner has made a determination of origin and disposition pursuant to Public Resources Code Section 5097.98. The County Coroner must be notified of the find immediately. If the remains are determined to be prehistoric, the County Coroner will notify the Native American Heritage Commission (NAHC), which will determine and notify a Most Likely Descendant (MLD). With the permission of the landowner or his/her authorized representative, the MLD may inspect the site of the discovery. The MLD shall complete the inspection within 48 hours of notification by the NAHC. The MLD may recommend scientific removal and nondestructive analysis of human remains and items associated with Native American burials.

TABLE OF CONTENTS

MANAGEMENT SUMMARY	i
TABLE OF CONTENTS	ii
Appendices.....	ii
Figure	ii
Table.....	ii
INTRODUCTION	1
NATURAL SETTING.....	3
Climate, Watershed and Biology	3
Geology	3
CULTURAL SETTING	3
Prehistory.....	3
Ethnohistory.....	4
History.....	4
METHODS	6
Records Search.....	6
Additional Research	6
Field Survey.....	6
RESULTS.....	7
Records Search.....	7
Cultural Resources Previously Documented within the Study Area.....	8
Previous Assessment	8
Additional Research	9
Field Survey.....	9
RECOMMENDATIONS	10
REFERENCES	11

Appendices

A: RECORDS SEARCH RESULTS BIBLIOGRAPHY

B: DPR SITE RECORDS

Figure

Figure 1: Regional and Project Location..... 2

Table

Table A: Cultural Resources within 1 Mile of the Project..... 7

INTRODUCTION

The City of Hemet retained LSA Associates, Inc. (LSA) to conduct a cultural resources assessment for the proposed construction of the Rancho Diamante Project in the City of Hemet (City) in Riverside County (County), California. The assessment included records searches, additional research, and field surveys of the project area. This assessment report documents the potential for cultural resources to be present within the project area and whether those resources will be affected by construction of the project. This assessment addresses the requirements of the California Environmental Quality Act (CEQA); as amended January 1, 2016): Public Resources Code (PRC), Division 13 (Environmental Quality), Chapter 2.6 Section 21083.2 (Archaeological Resources) and Section 21084.1 (Historical Resources); and the *Guidelines for CEQA* (as amended December 1, 2015), California Code of Regulations (CCR) Title 14, Chapter 3, Article 5 Section 15064.5 (Determining the Significance of Impacts on Historical and Unique Archaeological Resources).

The project area is on the west side of Warren Road at the eastern end of Mustang Way. It is bounded by the Hemet Channel to the north, agricultural fields to the south, residential development to the east, and the San Jacinto and Pleasant Valley Canal to the west. The project area is depicted on the United States Geological Survey (USGS) *Winchester, California* 7.5-minute topographic map in Township 5 South, Range 2 West, Section 24, San Bernardino Baseline and Meridian (USGS 1979) (Figure 1). The project area encompasses Assessor's Parcel Numbers (APNs) 465-100-016, 465-110-020, 021, 022, 023, 027, and portions of 465-100-033, 460-010-005, 006, and 007; 460-060-009; 460-381-009; 460-390-037, and 038; 465-100-017, 022, 025, and 026; 465-110-017 and 28; 465-120-019 and 021; and 465-130-016 and 017.

Tentative Tract Map (TTM) No. 36841 proposes to subdivide 245.07 acres into 586 single-family residential lots on approximately 160.51 acres, 1 lot of approximately 100,000 square feet of commercial uses on 19.67 acres, and 64.89 acres of public and private Homeowners Association (HOA) park, and open space areas. Total on-site area remains 245.07 acres.

Off-site improvements include construction of water and reclaimed water pipelines in the abutting roads, drainage conveyance features, and the construction of the westerly half of new Warren Road. The Warren Road improvements include modifications to the Stetson Avenue intersection at the northeast corner of the Modified Project site including a realigned transition back to the existing Warren Road alignment (2.05 acres of permanent impacts). Proposed utility lines will be constructed to the extent they are required within the rights-of-way of the abutting roads. Off-site utility pipelines will be constructed by others during future off-site road construction. Off-site drainage improvements include connections to the existing Hemet Channel north of the site (0.05 acre of temporary impacts for the installation of seven drainage connections) and improvements to an existing drainage channel from the existing drainage basin in the southwest corner of the Modified Project site extending southerly to Simpson Road (4.17 acres of permanent impacts and 2.42 acres of temporary impacts). From Simpson Road, the channel would continue to convey runoff south toward Salt Creek without further modifications. Temporary impacts for the channel assume a width of 20 feet for construction purposes on both sides of the ultimate channel and maintenance drive. Modified Project permanent impacts for off-site improvements total 6.22 acres and temporary impacts total 2.47 acres.

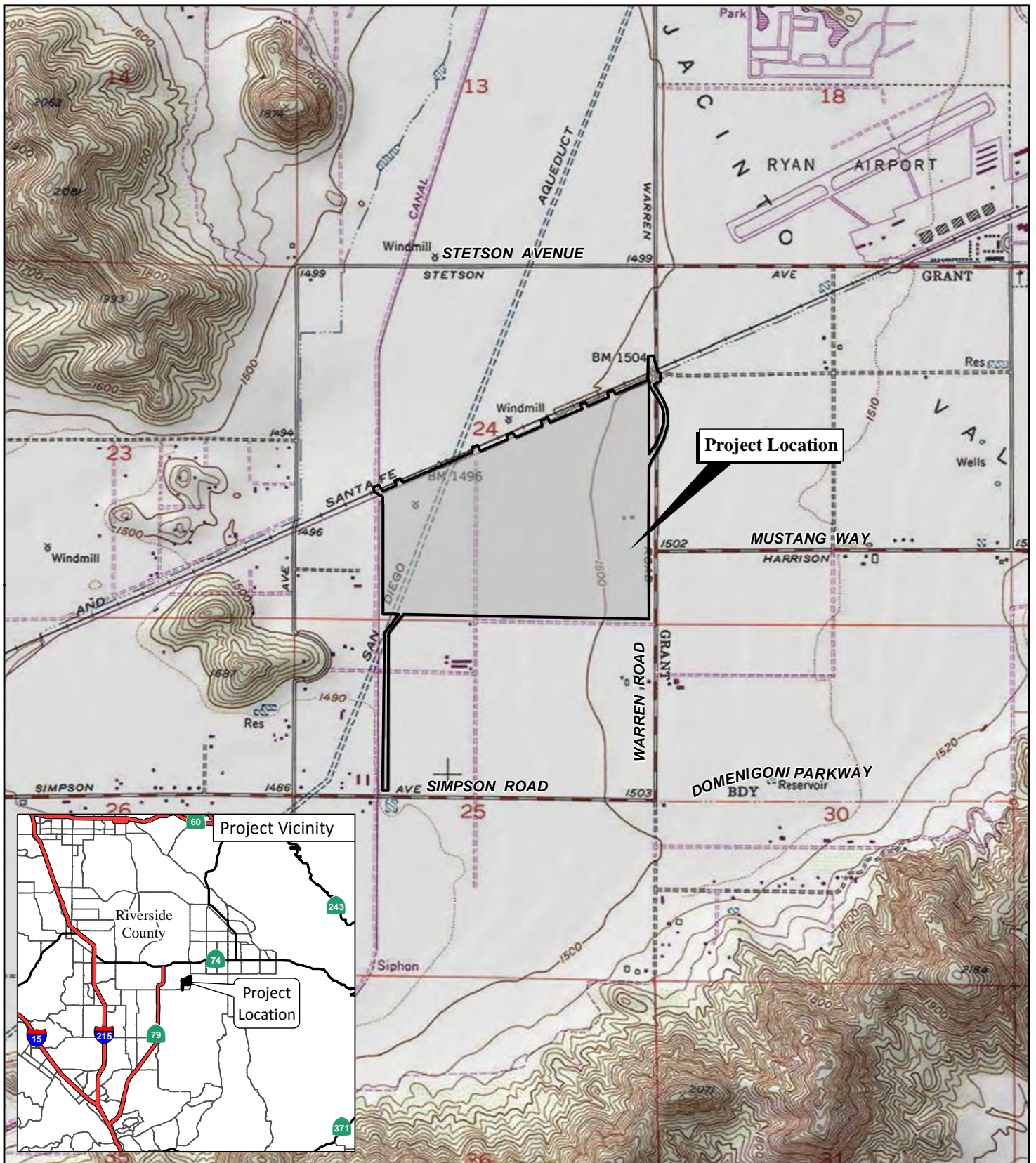
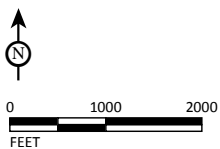


FIGURE 1



LEGEND

Project Boundary



Rancho Diamanté Phase II
Regional and Project Location

SOURCE: USGS 7.5' Quad: Winchester (79), CA; Riverside County, 2015.

I:\HET1601\Report\NOP\RegLoc_WithOutsidImprovements.mxd (11/22/2019)

NATURAL SETTING

Climate, Watershed and Biology

At an average elevation of 1,500 feet, the project is within the Sonoran Life Zone of California (Schoenherr 1992), which ranges from below sea level to an elevation of approximately 3,500 feet. The project region is characterized by an arid climate, with dry, hot summers and moderate winters. Rainfall averages 5–15 inches annually (Beck and Haase 1974). Precipitation usually occurs in the form of winter rain, with warm monsoonal showers in summer. The project area may have once been transected or bracketed by ephemeral drainages. Although the native vegetation of the project area has been largely displaced by agriculture activities, common wild plants observed included mustard, Russian thistle, hare oat, and seasonal grasses. Common animals include deer, coyotes, foxes, rabbits, rodents, ravens, raptors, reptiles, and insects.

Geology

The project area is located at the northern end of the Peninsular Ranges Geomorphic Province, a 900-mile long northwest-southeast trending structural block that extends from the Transverse Ranges to the tip of Baja California and includes the Los Angeles Basin (California Geological Survey 2002; Norris and Webb 1976). The total width of this province is approximately 225 miles, extending from the Colorado Desert in the east, across the continental shelf to the Southern Channel Islands (Santa Barbara, San Nicolas, Santa Catalina, and San Clemente) in the west (Sharp 1976). This province is characterized by a series of mountain ranges separated by northwest-trending valleys subparallel to faults branching from the San Andreas Fault (California Geological Survey 2002). It contains extensive pre-Cretaceous (older than 145 million years ago [Ma]) igneous and metamorphic rocks covered by limited exposures of post-Cretaceous (younger than 66 Ma) sedimentary deposits (Norris and Webb 1976). Within this province, the project is located on the Perris Block, a fault-bounded structural block that extends from the southern foot of the San Gabriel and San Bernardino Mountains southeast to the vicinity of Bachelor Mountain and Polly Butte (Morton and Miller 2006; Kenney 1999). It is bounded on the northeast by the San Jacinto Fault and on the southwest by the Elsinore Fault Zone (Morton and Miller 2006).

Geologic mapping indicates the project area contains Holocene (less than 11,700 years ago) Surficial Sediments, which consist of unconsolidated and undissected sand and gravel (Dibblee 2008). These deposits formed as flooding streams carried sediment from higher elevations down to the valley floors.

CULTURAL SETTING

Prehistory

Chronologies of prehistoric cultural change in Southern California area have been attempted numerous times, and several are reviewed in Moratto (2004). No single description is universally accepted as the various chronologies are based primarily on material developments identified by researchers familiar with sites in a particular region and variation exists essentially due to the differences in those items found at the sites. Small differences occur over time and space, which combine to form patterns that are variously interpreted.

Currently, two primary regional culture chronology syntheses are commonly referenced in the archaeological literature. The first, Wallace (1955), describes four cultural horizons or time periods: Horizon I – Early Man (9000–6000 BC), Horizon II – Milling Stone Assemblages (6000–3000 BC), Horizon III – Intermediate Cultures (3000 BC–AD 500), and Horizon IV – Late Prehistoric Cultures (AD 500–historic contact). This chronology was refined (Wallace 1978) using absolute chronological dates obtained after 1955.

The second cultural chronology (Warren 1968) is based broadly on Southern California prehistoric cultures and was also revised (Warren 1984; Warren and Crabtree 1986). Warren's (1984:340–430) chronology includes five periods in prehistory: Lake Mojave (7000–5000 BC), Pinto (5000–2000 BC), Gypsum (2000 BC–AD 500), Saratoga Springs (AD 500–1200), and Protohistoric (AD 1200–historic contact). Changes in settlement pattern and subsistence focus are viewed as cultural adaptations to a changing environment, which begins with gradual environmental warming in the late Pleistocene, continues with the desiccation of the desert lakes, followed by a brief return to pluvial conditions, and concludes with a general warming and drying trend, with periodic reversals that continue to the present (Warren 1986). After AD 500, there was an influx of Native American groups from the eastern deserts into southern California. These groups brought changes in subsistence focus and associated technologies, as well as burial practices. These cultural changes along with the group migrations are known as the *Shoshonean Intrusion* or *Shoshonean Wedge* (Kroeber 1925; Koerper 1979) and the *Takic Wedge* (Bergin and Ferraro 1999). The term *Takic Wedge* refers to the wedge of Takic culture groups that moved to the coast, displacing tribes of the Hokan and Yuman language stocks to the north and south (Shipley 1978). The ethnographically recorded Luiseño, Juaneño, and Gabrielino are thought to be the descendants of prehistoric Takic populations that settled along the coast during the Late Prehistoric Period, or perhaps even earlier. The Serrano and Cahuilla, more distant from the coast, are also Takic-speaking tribes within this wedge.

Ethnohistory

The project is located within the traditional cultural territory of the Luiseño (Kroeber 1925; Bean and Shippek 1978). Like other Native American groups in Southern California, the Luiseño were semi-nomadic, hunter-gatherers who subsisted by exploitation of seasonably available plant and animal resources and were first encountered by the Spanish missionaries in the late 18th century. The first written accounts of the Luiseño are attributed to the mission fathers, and later documentation was by Sparkman (1908), White (1963), Oxendine (1983), and others.

History

In California, the historic era is generally divided into three periods: the Spanish Period (1769–1821), the Mexican Period (1821–1848), and the American Period (1848–present).

During the Spanish Period, Riverside County proved to be too far inland to include any missions or *asistencias* within its limits, although both San Juan Capistrano and San Luis Rey claimed a large part of southwestern Riverside County. Missions San Juan Capistrano and San Luis Rey were established in 1776 and 1798, respectively.

In 1821, Mexico overthrew Spanish rule and the missions began to decline. By 1833, the Mexican government passed the Secularization Act, the missions reorganized as parish churches, and they lost their vast land holdings. During the Mexican Period, 16 ranchos were granted in Riverside County, none of which included the project area.

In 1848, the United States obtained California from Mexico through the Treaty of Guadalupe Hidalgo. As westward travel along the Santa Fe Trail increased, settlement developed along the Santa Ana and San Jacinto waterways. Ten years later, the first stage of the Butterfield Overland Mail passed through Temecula in southwestern Riverside County. By 1876, the Southern Pacific Railroad had completed its line from Los Angeles through the San Geronio Pass, bringing many settlers into the area, which resulted a boom period of agricultural and land development, ultimately resulting in the establishment of Riverside County in 1893.

Hemet

The Rancho San Jacinto Viejo was acquired from the Estudillo family by William F. Whittier and associates, who ultimately formed the Lake Hemet Water Company in the mid-1880s. In 1891, the water company started construction of Lake Hemet Dam, located on the South Fork of the San Jacinto River in the San Jacinto Mountains, 15 miles south southeast of Little Lake (Scott 1977). Lake Hemet and the water distribution system, which included small reservoirs, were built by 1895. The creation of Lake Hemet and its canal system ensured the future development of the community of Hemet, which had a post office by 1898 and was incorporated in 1910 (Salley 1977; Gunther 1984). Other water conveyance systems were constructed to drain the City in the following decades. Prosperity was facilitated by the arrival of the railroad, and Hemet prospered as an agricultural and horse stock farming community into the mid-20th century, by which time land values had increased to make suburban development more profitable.

Hemet Channel (from Born et al. 1984)

The Hemet Channel is a western continuation of the Florida Avenue storm drain that begins at approximately the crossing of Palm and Florida Avenues. It is the major storm drain for the City of Hemet. Although it dates to at least the early 1940s, it was constructed in its existing configuration by the Riverside County Flood Control and Water Conservation District (RCFCWCD) in the early 1970s, except for revisions in 1980 at Acacia Avenue. The channel is trapezoidal and extends from Palm Avenue to the intersection of Patterson and Olive Avenues in Winchester. The channel is concrete-lined from Palm Avenue to Cawston Avenue; beyond Cawston Avenue, the channel is unlined and was considered an interim facility in the mid-1980s. A small segment (150 feet) transects the project area and the portion on the west side of the Warren Road (which transects the project area) is partially lined with riprap and concrete.

San Jacinto Valley Railroad (from Easter and Beedle 2005)

In 1887, C.W. Smith and Fred Perris of the California Southern Railroad (a subsidiary of Atchison, Topeka and Santa Fe), and .I.A. Green incorporated the San Jacinto Valley Railway and the branch line was constructed from Perris to its terminus at San Jacinto the following year. Winchester and Hemet were the major towns along the rail line, and the original town site of the latter was moved west so that it would be located on the line. The railroad connected the eastern part of the valley to

the California Southern Railroad, facilitating transportation of valley agricultural products to markets in Los Angeles and San Diego. The railroad also provided passenger service to Los Angeles. The construction of modern highways in the 1950s reduced the importance of the railroad and later the route was taken over by the Atchison, Topeka and Santa Fe Railroad, and finally the Burlington Northern Santa Fe (BNSF), which abandoned the line. A very small segment (approximately 130 feet) transects the northeastern corner of the project area.

METHODS

Records Search

On August 8, 2016, LSA Cultural Resources Manager Gini Austerman completed a cultural resources records search for the project area and a mile radius around it at the Eastern Information Center (EIC) of the California Historical Resources Information System (CHRIS) located at the University of California, Riverside. The EIC is the State-designated repository for records pertaining to cultural resources in Riverside County. The objectives of this research were (1) to establish the status and extent of previously recorded cultural resources sites, surveys and studies, (2) to note the likelihood of encountering cultural resources and their type(s) based on previously recorded resources within 1 mile of the project area, and (3) to uncover relevant historical contexts. Data sources consulted at the EIC include archaeological site records, historic USGS topographic maps, reports from previous studies, and the State Historic Resource Inventory (HRI) for Riverside County, which contains listings for the National Register of Historic Places (National Register), California Register of Historical Resources (California Register), California Historical Landmarks (SHL), and California Points of Historical Interest (SPHI).

On December 5, 2019, LSA Senior Environmental Planner Dionysius Glentis conducted a supplementary cultural resources records search at the EIC in an expanded radius one mile out from the off-site improvements.

Additional Research

On August 14, 2016, and December 2, 2019, Archaeologist/Senior Cultural Resources Manager Riordan Goodwin reviewed historic-period maps and online aerial photographs.

Field Survey

On August 16, 2016, LSA Archaeologists Kerrie Absher, Nicholas Bizzell, Alexandre Hughes, and Logan Freeberg conducted a reconnaissance pedestrian survey of the project area. The entire project area was surveyed in systematic parallel transects spaced by approximately 12 meters (approximately 40 feet). Special attention was given to (1) areas of exposed soil for evidence of artifacts on the surface, (2) areas of rodent back dirt where buried artifacts and/or midden may have been brought to the surface, and (3) exposed soil profiles for evidence of cultural stratigraphy. The purpose of this survey was to identify and document any cultural resources that might be exposed and locate areas within the project area that might be sensitive for cultural resources prior to the beginning of ground-disturbing activities.

On November 27, 2019 Mr. Goodwin conducted a follow-up pedestrian survey using the methodology indicated above of the areas of off-site improvements adjacent to the development area.

RESULTS

Records Search

Data from the EIC indicated 53 cultural resources studies have been conducted within a 1-mile radius, two of which included a portion and the entirety of the project area (respectively, Brown 1994 and Aislin-Kay and Dice 2007; see Appendix A for records search bibliographies). One of the studies recommended monitoring of the current project area (Aislin-Kay and Dice 2007). Three historic period resources were documented within the project area: the San Diego Aqueduct (33-015734), the route of the San Jacinto Valley Railway (33-015743), and the former site of a 1900s farm complex (33-015900). Also, the project is bounded by substantial historic period resources: San Jacinto and Pleasant Valley Canal (33-005202) and the San Jacinto Valley Railway (33-015743). An additional 41 resources were documented within 1 mile, including prehistoric and historic period archaeological resources and built environment properties. The nearest prehistoric resource is an isolated artifact (33-00863) approximately 380 meters north of the project area. None of the resources documented within the study area was in any of the inventories, directories, or registers.

Table A: Cultural Resources within 1 Mile of the Project

Primary #	Resource Description
33-00863	Isolated metate fragment
33-002770	Multi-component site: prehistoric bedrock milling features, artifact scatter, historic period refuse
33-002772	Prehistoric bedrock milling complex
33-002773	Multi-component site: prehistoric bedrock milling features, artifact scatter, historic period refuse
33-005198	Historic period refuse
33-005199	Historic period water conveyance system
33-005201	Historic period refuse
33-005202	San Jacinto and Pleasant Valley Canal
33-005329	Historic period farmhouse and reservoir
33-006140	Isolated prehistoric artifact
33-006373	Prehistoric artifact scatter
33-005780	Hemet-Ryan Airport
33-006309	36969 Grand Avenue, c. 1945 residence
33-007896	Prehistoric lithic scatter
33-009014	Historic period irrigation feature
33-012767	Isolated prehistoric artifact
33-012768	Isolated prehistoric artifact
33-013740	Isolated prehistoric artifact
33-014251	Historic period dairy cow cleaning and milking station
33-014829	Prehistoric bedrock milling station
33-014830	Prehistoric bedrock milling station

Table A: Cultural Resources within 1 Mile of the Project

Primary #	Resource Description
33-014831	Prehistoric bedrock milling station
33-014832	Prehistoric bedrock milling station
33-014833	Historic period mining feature (prospect pit)
33-014834	Prehistoric bedrock milling station and historic refuse
33-014835	Prehistoric bedrock milling station
33-015447	Prehistoric bedrock milling features
18.33-015661	Historic period farmstead remnants-foundation slabs and refuse
33-015663	Historic period fieldstone structure and refuse
33-015734*	San Diego Aqueduct
33-015743*	San Jacinto Valley Railway (now Burlington Northern Santa Fe)
33-015742	West Coast Farms, c. 1930 residence and outbuildings
33-015751	Historic period Wilhelm Ranch
33-015900*	Historic period farmstead remnants
33-015901	Historic period Fisher Farm
33-017000	Historic period foundation and pipe remnants
33-017001	Historic period residence, pre-1953
33-017002	34514 Simpson Avenue, pre-1953 residence
33-017003	Historic period foundation and refuse
33-017004	Historic period transmission pole line
33-017631	Historic period water conveyance feature
33-017633	Historic period refuse
33-017634	Hanger #4 at Hemet-Ryan Airport
33-017635	Historic period water conveyance system

* within project

Cultural Resources Previously Documented within the Study Area

Two resources were previously documented within the project area: the San Diego Aqueduct (33-015734) and the former site of a historic period farm complex (33-15900 on APN 465-110-023) and a segment of the San Jacinto Valley Railway (33-015743). No intact features or artifacts were observed at the recorded location of the farm, but the potential for buried resources was noted (Dice 2007).

Previous Assessment

In 2007, a cultural resources assessment was conducted for the project that minimally documented and evaluated Site 33-15900 (Aislin-Kay and Dice 2007). Despite temporal data that indicated there had been a building at the site between at least 1901 and 1979, no Phase II testing was recommended and the site was evaluated as not significant under CEQA (Aislin-Kay and Dice 2007). However, it was noted that historic period foundations may remain below the surface and mitigation measures were recommended that included archaeological monitoring below the “plow zone” of 3 feet (Aislin-Kay and Dice 2007).

Additional Research

Review of historic topographic maps and aerial photographs indicated the farm complex was removed sometime between the late 1970s and mid-1990s (Historic Aerials var.).

Field Survey

Visibility was good (approximately 95 percent) with little obstruction by vegetation with the exception of the off-site drainage alignment, which was poor (5 percent) and almost completely obscured by mulch and crops. The project has been moderately to severely disturbed by agricultural activities. Soils are silty alluvium. The following is a summary of the resources within the project area.

Site 33-015734 (The San Diego Aqueduct)

This functioning water-conveyance infrastructure is subsurface and not visible within the project area. Therefore, no site record update was prepared for this resource.

Site 33-015743 (San Jacinto Valley Railway)

The short segment of the 1880s line that transects the project area (approximately 130 feet) is located between Stetson Avenue and Corte de Mar on Warren Road. At the intersection of the railroad with Warren Road, there is a traditional black-and-white railroad crossing sign, approximately 8 feet tall. There is one set of rails, with associated ties and ballast berm. The railroad is standard gauge track (4'-8" spacing) with 39-foot long steel rails, which had been replaced (marked with "COLORADO SEC. 903. XII. 1914. OH"). The setting is predominantly rural, but suburban development has encroached to the south of Warren Road. This segment has sustained damage; one of the rails has been severely bent/separated from the ties, some ties have been displaced. In addition, the rails are very rusted and the ballast berm and ties have been obscured by soil and xeric vegetation. Therefore, the segment lacks physical integrity and does not contribute to the eligibility of the resource as a whole for the California Register.

Site 33-015900

This site was revisited during the 2016 survey for the Rancho Diamante Project. It is marked by remnant landscaping trees and mounds of soil containing concrete rubble. The nature and condition of the resource are consistent with the 2007 site record (Dice 2007). There is still modern debris consisting of large fragments of structural concrete, construction-type road base gravel, and modern refuse such as a broken table, baby car seat, and two mattresses (see site record update in Appendix B). No historic-period features or artifacts were observed in the area.

LSA-HET1601-S-1 (Hemet Channel)

The 150-foot segment of this trapezoidal drainage channel that transects the project area between Stetson Avenue and Corte de Mar on Warren Road averages 40 feet wide and is approximately 10 feet deep with a recent metal culvert and concreted riprap on the west side of Warren Road.

RECOMMENDATIONS

Cultural resources records searches, additional research, and field surveys were conducted for the project area. Three previously documented cultural resources were identified within the project area: a still-active subsurface aqueduct (33-015734), an abandoned railroad line (33-015743), and the former site of an early 20th century farm (33-015900). One additional linear resource that transects the project area (Hemet Channel) was also documented. Although previously evaluated as not significant under CEQA, the farm site retains some potential for subsurface deposits. The project is also bounded by a segment of the historic period San Jacinto and Pleasant Valley Canal (33-005202). Therefore, due the presence of multiple historic period cultural resources within and adjacent to the project area, there is some sensitivity for undocumented subsurface deposits of potential significance or local interest, and the previous recommendation for archaeological monitoring is carried forward. In the event previously undocumented archaeological resources are identified during earthmoving activities, further work in the area should be halted until a qualified archaeologist has assessed the nature of the find(s) and has determined appropriate treatment.

If human remains are encountered, State Health and Safety Code Section 7050.5 states that no further disturbance shall occur until the County Coroner has made a determination of origin and disposition pursuant to PRC Section 5097.98. The County Coroner must be notified of the find immediately. If the remains are determined to be prehistoric, the Coroner will notify the Native American Heritage Commission (NAHC), which will determine and notify a Most Likely Descendant (MLD). With the permission of the landowner or his/her authorized representative, the MLD may inspect the site of the discovery. The MLD shall complete the inspection within 48 hours of notification by the NAHC. The MLD may recommend scientific removal and nondestructive analysis of human remains and items associated with Native American burials.

REFERENCES

Aislin-Kay, Marnie, and Michael Dice

- 2007 Phase I Cultural Resources Survey, Tracts #35392, #35393, and #35394, The Rancho Diamante Project, City of Hemet, Riverside County, California.

Bean, Lowell John, and F. Shippek

- 1978 Luiseño. In California, edited by R.F. Heizer, pp. 550–563. *Handbook of North American Indians*, vol. 8, W.C. Sturtevant, general editor, Smithsonian Institution, Washington, D.C.

Beck, Warren A., and Ynez D. Haase

- 1974 *Historical Atlas of California*. Norman, Oklahoma: University of Oklahoma Press.

Bergin, Kathleen Ann, and David D. Ferraro

- 1999 Historic Properties Treatment Plan: Geotechnical Investigations of the CP Alignment of the Foothill Transportation Corridor—South, Orange and San Diego Counties, California. LSA Associates, Inc. Ms. on file, LSA Associates, Inc., 20 Executive Park, Suite 200, Irvine, California, 92614; Southwest Division, Naval Facilities Engineering Command, 1220 Pacific Highway, San Diego, California; and AC/S Environmental Security Office, MCB Camp Pendleton, California.

Born, Robert H., Jeffrey M. Cooper, and John R. Stratford

- 1984 Hemet Master Flood Control and Drainage Plan. Born Associates.

Brown, Joan C.

- 1994 Cultural Assessment and Survey of Portions of the Hemet and Salt Creek Channels for the Salt Creek Master Drainage Plan. RMW Paleo Associates Incorporated.

California Geological Survey

- 2002 *California Geomorphic Provinces*. California Geologic Survey Note 36. California Department of Conservation.

Easter, P., and P. Beedle

- 2005 Site record for 33-015743/CA-RIV-8196 (San Jacinto Valley Railway). Applied Earthworks.

Dibblee, T.W., Jr.

- 2008 *Geologic Map of the Murrieta 15-minute Quadrangle, Riverside County, California*. Edited by J.A. Minch. Dibblee Geological Foundation Map DF-417. Map Scale 1:62,500.

Dice, Michael

- 2007 Site record for 33-015900.

Gunther, Jane D.

- 1984 *Riverside California Place Names: Their Origins and Their Stories*. Riverside: Rubidoux Printing Company.

Historic Aerials (HistoricAerials.com)

Var. 1968–1996 aerial photographs of project area.

Kenney, Miles D.

1999 *Emplacement, Offset History, and Recent Uplift of Basement within the San Andreas Fault System, Northeastern San Gabriel Mountains*. Unpublished Ph.D. Dissertation, University of Oregon. 279 pp.

Koerper, Henry C.

1979 On the Question of the Chronological Placement of Shoshonean Presence in Orange County, California. *Pacific Coast Archaeological Society Quarterly* 15(3):69-84.

Kroeber, Alfred L.

1925 *Handbook of the Indians of California*. Bureau of American Ethnology Bulletin No. 78. Washington D.C.: Smithsonian Institution. Reprinted in 1976, New York: Dover Publications.

Moratto, Michael J.

2004 *California Archaeology*. Orlando, Florida: Academic Press. Reprinted by Coyote Press in 2004.

Morton, Douglas, and Fred K. Miller

2006 *Geologic Map of the San Bernardino and Santa Ana 30' x 60' Quadrangles, California*. Version 1.0. Digital Preparation by Pamela M. Cossette and Kelly R. Bovard. Prepared by the United States Geologic Survey in Cooperation with the California Division of Mines and Geology. Open File Report 2006–1217. Map Scale 1:100,000.

Norris, R.M., and R.W. Webb

1976 *Geology of California*, John Wiley and Sons, Inc., Santa Barbara.

Oxendine, Joan

1983 *The Luiseño Village During the Late Prehistoric Era*. Unpublished Ph.D. dissertation, Department of Anthropology, University of California, Riverside.

Salley, H.E.

1977 History of California Post Offices 1849–1976.

Scott, M.B.

1977 Development of water facilities in the Santa Ana River Basin, California, 1810–1968. USGS open-file report.

Sharp, R.P.

1976 *Geology: Field Guide to Southern California*, Kendall/Hunt Publishing Company, Second Edition: 181.

Shipley, William F.

- 1978 Native Languages of California. In R. Heizer ed., *Handbook of North American Indians*, vol. 8, California, pp. 80–90. Smithsonian Institution, Washington D.C.

Schoenherr, Allan A.

- 1992 *A Natural History of California*. University of California Press, Berkeley and Los Angeles.

Sparkman, Philip S.

- 1908 The Culture of the Luiseño Indians. *University of California Publications in American Archaeology and Ethnology* 8(4). Berkeley.

United States Geological Survey (U.S. Department of the Interior)

- 1979 *Winchester, California 7.5-minute topographic quadrangles*.

Wallace, William J.

- 1955 A Suggested Chronology for Southern California Coastal Archaeology. *Southwestern Journal of Anthropology* 11(3):214–230.
- 1978 Post-Pleistocene Archaeology. In California, edited by R. Heizer, pp. 550–563. *Handbook of North American Indians*, Vol. 8. W.C. Sturtevant, general editor. Smithsonian Institution, Washington, D.C.

Warren, Claude N.

- 1968 Cultural Tradition and Ecological Adaptation on the Southern California Coast. *Eastern New Mexico University Contributions in Anthropology* 1(3). Portales.
- 1984 The Desert Region. In *California Archaeology*, by M. Moratto with contributions by D.A. Fredrickson, C. Raven, and C. N. Warren, pp. 339–430. Academic Press, Orlando, Florida.
- 1986 Fort Irwin Historic Preservation Plan, Volume 2: The Research Overview. Coyote Press, Salinas, California. Copies also available from National Park Service-Western Region, San Francisco, and National Technical Information Service, Washington, D.C.

Warren, Claude N., and Robert H. Crabtree

- 1986 Prehistory of the Southwestern Area. In W.L. D’Azevedo ed., *Handbook of the North American Indians*, Vol. 11, Great Basin, pp. 183–193. Washington D.C.: Smithsonian Institution.

White, Raymond C.

- 1963 Luiseño Social Organization. University of California. Publications in *American Archaeology and Ethnology*. 48 (2):91–194.

APPENDIX A

RECORDS SEARCH RESULTS BIBLIOGRAPHY

Report List

Report No.	Other IDs	Year	Author(s)	Title	Affiliation	Resources
RI-00186	NADB-R - 1080236; Submitter - 0167; Voided - MF-0173	1975	Helen Wells	Archaeological Impact Report: Eastern Municipal Water District, Riverside County, California: PL 984 Water Systems Addition	Archaeological Research Unit, U.C. Riverside	33-000418
RI-01995	NADB-R - 1084585; Voided - MF-2180	1994	WILLIAMS, SCOTT and MELINDA ROMANO	FINAL REPORT: METROPOLITAN WATER DISTRICT - DOMENIGONI VALLEY RESERVOIR PROJECT - CULTURAL RESOURCES SURVEY REPORT NUMBER 13, EASTSIDE PIPELINE PROJECT	INFOTEC Research Inc., Fresno, CA	33-002773
RI-03177	NADB-R - 1083737; Voided - MF-3396	1990	DROVER, CHRISTOPHER E.	A CULTURAL RESOURCE ASSESSMENT: PARCEL MAP 26241, WINCHESTER, RIVERSIDE COUNTY, CALIFORNIA	AUTHOR(S)	
RI-03349	NADB-R - 1083967; Voided - MF-3588	1990	KELLER, JEAN A.	AN ARCHAEOLOGICAL ASSESSMENT OF CHANGE OF ZONE 5578, RIVERSIDE COUNTY, CALIFORNIA	Consulting Archaeologist, Temecula, CA	33-004339
RI-03778	NADB-R - 1084611; Voided - MF-4112	1994	DROVER, CHRISTOPHER	ENVIRONMENTAL IMPACT EVALUATION: A CULTURAL RESOURCES IMPACT ASSESSMENT OF THE PROPOSED REACH 3 RECLAIMED WATER TRANSMISSION FACILITIES PIPELINE ALIGNMENT, SIMPSON ROAD BETWEEN LEON AND WARREN ROADS	AUTHOR	
RI-03828	NADB-R - 1084683; Voided - MF-4173	1994	DROVER, CHRISTOPHER	ENVIRONMENTAL IMPACT EVALUATION: A CULTURAL RESOURCES IMPACT ASSESSMENT OF THE PROPOSED REACH 7 RECLAIMED WATER TRANSMISSION FACILITIES PIPELINE ALIGNMENT BETWEEN WARREN ROAD AND STATE STREET, EASTERN MUNICIPAL WATER DISTRICT	AUTHOR	33-005202, 33-005542
RI-03922	NADB-R - 1084862; Voided - MF-4292	1995	ROBINSON, MARK	METROPOLITAN WATER DISTRICT, EASTSIDE (DOMENIGONI VALLEY) RESERVOIR PROJECT. ADDENDUM II: CULTURAL RESOURCES SURVEY REPORT NUMBER 13, EASTSIDE PIPELINE PROJECT	INFOTEC	
RI-04340	NADB-R - 1085636; Voided - MF-4836	2000	DICE, MICHAEL and LESLIE IRISH	A REVISED ARCHAEOLOGICAL ASSESSMENT OF THE EMERALD ACRES PROJECT, HEMET AREA, RIVERSIDE COUNTY, CALIFORNIA.	L&L ENVIRONMENTAL, INC.	33-004339, 33-009632

Report List

Report No.	Other IDs	Year	Author(s)	Title	Affiliation	Resources
RI-04404	NADB-R - 1085736; Voided - MF-4913	2000	JONES AND STOKES ASSOCIATES, INC.	FINAL CULTURAL RESOURCES INVENTORY REPORT FOR THE WILLIAMS COMMUNICATIONS, INC., FIBER OPTIC CABLE SYSTEM INSTALLATION PROJECT, RIVERSIDE TO SAN DIEGO, CALIFORNIA VOL I-IV.	JONES AND STOKES ASSOCIATES, INC.	33-000816, 33-000817, 33-000862, 33-001845, 33-002970, 33-003081, 33-003839, 33-004202, 33-004624, 33-004744, 33-004768, 33-007587, 33-007601, 33-008105, 33-008172, 33-009772, 33-009773, 33-009774, 33-009775, 33-009776
RI-05072	NADB-R - 1086434	2003	APPLIED EARTHWORKS	CULTURAL RESOURCES SUVEY OF TENTATIVE TRACT 30558, HEMET, CALIFORNIA	APPLIED EARTHWORKS, Inc., Hemet, CA	33-005202, 33-006373
RI-05316	NADB-R - 1086679	2004	AISLIN-KAY, MARNIE and MICHAEL DICE	PHASE I CULTURAL RESOURCE SURVEY FOR TRACT 31801 AND TRACT 31808, CITY OF HEMET, RIVERSIDE COUNTY, CA	MICHAEL BRANDMAN ASSOCIATES, Irvine, CA	
RI-07389		2007	Aislin-Kay, Marnie and Michael Dice	Phase 1 Cultural Resource Survey, Tract #35392, Tract #35393 and Tract #35394, The Rancho Diamante Project, City of Hemet, Riverside County, California.	Michael Brandman Associates, Irvine, CA	33-015900, 33-015901
RI-07649		2005	Rosenberg, Seth A.	An Archaeological Survey for the Stowe Road Project, County of Riverside, California	Brian F. Smith and Associates	33-014251
RI-07833	Other - SCE 2007 CWA 89/Contract No. 01088.07	2008	Craft, Andrea M. and Theodore G. Cooley	Archaeological Survey Report for Southern California Edison Company Avenger 12kV DSP Project, Riverside County, California (WO #6577-5344, Al#6-5347 and WO#6177- 5355, Al#6-5348)	Jones & Stokes	33-005329, 33-005780, 33-015044, 33-015661, 33-015734, 33-015743, 33-015901, 33-017000, 33-017001, 33-017002, 33-017003, 33-017004
RI-08161		2008	Bai Tang and Michael Hogan	Historical/Archaeological Resources Survey Report Line D and D-1 Realignment City of Murrieta, Riverside County, California	CRM Tech, Colton, California	33-005786
RI-08189		1995	Mark C. Robinson	Revised Draft Report, Metropolitan Water District Domenigoni Valley Reservoir Project, Addendum: Cultural Resources Survey Repoort Number 13 Eastside Pipeline Project	INFOTEC Research, Inc., Fresno, CA	
RI-08190	Other - Report No. LC-CA-94-1	1993	William G. White	Simpson Road Reclaimed Water Transmission Main, Phase I and II, Reach 6 Eastern Municipal Water District	Bureau of Reclamation Lower Colorado Region, Boulder City, Nevada	

Report List

Report No.	Other IDs	Year	Author(s)	Title	Affiliation	Resources
RI-08495	Agency Nbr - District 8-RIV-79-KP R25.4/R54.4 (PM R15.78/R33.80) 08-494000; Caltrans - District 8-RIV-79-KP R25.4/R54.4 (PM R15.78/R33.80) 08-494000	2010	Joan George, Vanessa Mirro, and Elizabeth Dennison	Supplemental Cultural Resources Survey Report: Cultural Resources in Southern San Jacinto Valley: Realign State Route 79 between Domenigoni Parkway and Gilman Springs Road in the Cities of Hemet and San Jacinto and the County of Riverside. Riverside County, California	Applied EarthWorks	33-009014, 33-009632, 33-009712, 33-014251, 33-014815, 33-014818, 33-014819, 33-014821, 33-014822, 33-014823, 33-014826, 33-014827, 33-014829, 33-014830, 33-014831, 33-014832, 33-014833, 33-014834, 33-014835, 33-014836, 33-014837, 33-014838, 33-015446, 33-015447, 33-015661, 33-017631, 33-017632, 33-017633, 33-017634, 33-017635
RI-09148		2013	Brian F. Smith	Cultural Resource Report for the Emerald Acres Project Riverside County, California	Brian F. Smith and Associates, Inc.	
RI-09351		1993	John M. Foster	History and Historical Archaeology of the Domenigoni Valley Volume 7: Remote Sensing Survey San Diego Canal Realignment, Parcel 161	Greenwood and Associates	
RI-09530		1996	Melinda C. Romano	Cultural Resources Survey Report Number 15 Miscellaneous Parcels Located Outside the Original Reservoir Take-Line	Applied Earthworks Inc.	

Report List

Report No.	Other IDs	Year	Author(s)	Title	Affiliation	Resources
RI-00130	NADB-R - 1080145; Voided - MF-0110	1974	Helen Clough	Filed Notes for the Archaeological Survey of PL984 Weter Systems Additions.		33-001016, 33-001017
RI-00304	NADB-R - 1080359; Voided - MF-0276	1978	Donna Belligio	Environmental Impact Evaluation: An Archaeological Assessment of Parcel Map 12221, North of Diamond Valley, Riverside County, California	Archaeological Research Unit, U.C. Riverside	
RI-00501	NADB-R - 1080541; Voided - MF-0433	1978	D.M. Van Horn	Archaeological Survey of 70 Acre Parcel of Land Located In San Jacinto Valley Near Hemet	Archaeological Associates, Inc., Costa Mesa, CA	
RI-01776	NADB-R - 1082124; Voided - MF-1919	1984	MCCARTHY, DANIEL F.	AN ARCHAEOLOGICAL ASSESSMENT OF TENTATIVE PARCEL 19021, SAN JACINTO VALLEY, RIVERSIDE COUNTY, CALIFORNIA	ARCHAEOLOGICAL RESEARCH UNIT, U.C. RIVERSIDE	33-002770, 33-002771, 33-002772, 33-002773
RI-02949	NADB-R - 1084617; Voided - MF-3171	1993	GOLDBERG, SUSAN K. and OTHERS	METROPOLITAN WATER DISTRICT DOMENIGONI VALLEY RESERVOIR PROJECT: HISTORIC PROPERTIES TREATMENT PLAN	INFOTEC AND GREENWOOD	
RI-02951	NADB-R - 1085105; Voided - MF-3171	1994	GREENWOOD, ROBERTA S., JOHN M. FOSTER, and MARK SWANSON	HISTORY AND HISTORICAL ARCHAEOLOGY OF THE DOMENIGONI VALLEY, VOLUME I: HISTORICAL OVERVIEW AND RESEARCH IMPLICATIONS, FINAL REPORT	GREENWOOD AND ASSOCIATES	
RI-03460	NADB-R - 1084835; Submitter - 962	2003	DAH DUL, MARIAM, JOSH SMALLWOOD, HARRY M. QUINN, LAURA HENSLEY SHAKER, ADRIAN SANCHEZ MORENO, BAI TANG, and MIKE HOGAN	ARCHAEOLOGICAL TESTING AND EVALUATION REPORT, NEWPORT ROAD EXTENSION PROJECT, NEAR THE COMMUNITY OF WINCHESTER, RIVERSIDE COUNTY, CALIFORNIA	CRM TECH	33-001164, 33-001356, 33-002222, 33-003990, 33-003991, 33-003992, 33-003999, 33-004000, 33-005202, 33-011449, 33-011451

Report List

Report No.	Other IDs	Year	Author(s)	Title	Affiliation	Resources
RI-03683	NADB-R - 1084459; Voided - MF-3990	1993	ROMANO, MELINDA C, SUSAN K. GOLDBERG, R. PAUL HAMNPSON, and JOHN M. FOSTER	FINAL REPORT: METROPOLITAN WATER DISTRICT DOMENIGONI VALLEY RESERVOIR PROJECT - CULTURAL RESOURCES SURVEY REPORT NUMBER 1	INFOTEC RESEARCH, INC., Fresno AND GREENWOOD & ASSOCIATES, Pacific Palisades, CA	33-000862, 33-001162, 33-001805, 33-001824, 33-002107, 33-002770, 33-002771, 33-002772, 33-002773, 33-003060, 33-003482, 33-004624, 33-004625, 33-004626, 33-004627, 33-004628, 33-004629, 33-004630, 33-004631, 33-004636, 33-004744, 33-004763, 33-004764, 33-004769, 33-004770, 33-004771, 33-004772, 33-004773, 33-004774, 33-004775, 33-004776, 33-004777, 33-004778, 33-004779, 33-004780, 33-004781, 33-004792, 33-004793, 33-004794, 33-004795, 33-004796, 33-004797, 33-004798, 33-004799, 33-004800, 33-004801, 33-004802, 33-004803, 33-004804, 33-004805, 33-004807, 33-004814, 33-004815, 33-004816, 33-004817, 33-004818, 33-004819, 33-004820, 33-004821, 33-004822, 33-004823, 33-004824, 33-004825, 33-004826, 33-004827, 33-004828, 33-004829, 33-004830, 33-004831, 33-004832, 33-004833, 33-004834, 33-004840, 33-004843, 33-004845, 33-004847, 33-004848, 33-004869, 33-004870, 33-004871, 33-004872, 33-004874, 33-004875, 33-004928, 33-004930
RI-03746	NADB-R - 1084570; Voided - MF-4077	1994	ROBINSON, MARK, MELINDA ROMANO, DANIEL LANDIS, and SUSAN GOLDBERG	CULTURAL RESOURCES SURVEY REPORT NUMBER 5 - MISCELLANEOUS PARCELS SURVEYED THROUGH 15 MAY 1993, RIVERSIDE COUNTY, CALIFORNIA	INFOTEC RESEARCH, INC, Fresno, CA	33-000862, 33-001162, 33-001805, 33-001824, 33-002773, 33-003482, 33-004627, 33-004636, 33-004792, 33-004823, 33-004886, 33-005021, 33-005022, 33-005023, 33-005024, 33-005025, 33-005032, 33-005034, 33-005046, 33-005076, 33-005077, 33-005078, 33-005079, 33-005086, 33-005089, 33-005090, 33-005091, 33-005092, 33-005125, 33-005126, 33-005127, 33-005169, 33-005200, 33-005204, 33-005205, 33-005206, 33-005207, 33-005208, 33-005209, 33-005210

Report List

Report No.	Other IDs	Year	Author(s)	Title	Affiliation	Resources
RI-03747	NADB-R - 1084571; Voided - MF-4078	1994	ROBINSON, MARK and PATRICK SANGER	CULTURAL RESOURCES SURVEY REPORT NUMBER 7 - NEWPORT ROAD REALIGNMENT, RIVERSIDE COUNTY, CALIFORNIA	INFOTEC RESEARCH, INC.	33-000240, 33-001162, 33-005026
RI-03767	NADB-R - 1084599; Voided - MF-4102	1994	BROWN, JOAN	CULTURAL ASSESSMENT AND SURVEY OF PORTIONS OF THE HEMET AND SALT CREEK CHANNELS FOR THE SALT CREEK MASTER DRAINAGE PLAN	RMW PALEO	
RI-03771	NADB-R - 1084603; Voided - MF-4105	1994	GOLDBERG, SUSAN and LYNNE M. ERTLE, EDS.	FINAL REPORT - METROPOLITAN WATER DISTRICT DOMENIGONI VALLEY RESERVOIR PROJECT: PREHISTORIC ARCHAEOLOGICAL TESTING AND EVALUATION REPORT NUMBER 7	INFOTEC	33-002772, 33-004829, 33-004832, 33-005024, 33-005029, 33-005090
RI-03773	NADB-R - 1084604; Voided - MF-4106	1994	GOLDBERG, SUSAN and LYNNE ERTLE, EDS.	FINAL REPORT - METROPOLITAN WATER DISTRICT DOMENIGONI VALLEY RESERVOIR PROJECT: PREHISTORIC ARCHAEOLOGICAL TESTING AND EVALUATION REPORT NUMBER 8	INFOTEC	33-002773, 33-004629, 33-004802, 33-005034, 33-005045, 33-005086, 33-005170, 33-005222, 33-005228
RI-03996	NADB-R - 1085028; Voided - MF-4399	1996	SCHMIDT, JAMES J.	FINAL REPORT METROPOLITAN WATER DISTRICT EASTSIDE RESERVOIR PROJECT: CULTURAL RESOURCES ASSESSMENT OF A PORTION OF CA-RIV- 5199H AND CA-RIV-5202H	GREENWOOD & ASSOCIATES, Pacific Palisades and APPLIED EARTHWORKS, Fresno, CA	33-005199, 33-005202
RI-04732	NADB-R - 1085233; Submitter - 1108	2004	CRM TECH	ARCHAEOLOGICAL MITIGATION AND DATA RECOVERY REPORT: NEWPORT ROAD EXTENSION PROJECT, NEAR THE COMMUNITY OF WINCHESTER, RIVERSIDE COUNTY, CALIFORNIA	CRM TECH	33-001164, 33-005202, 33-011449, 33-011591, 33-011593, 33-011596
RI-05316	NADB-R - 1086679	2004	AISLIN-KAY, MARNIE and MICHAEL DICE	PHASE I CULTURAL RESOURCE SURVEY FOR TRACT 31801 AND TRACT 31808, CITY OF HEMET, RIVERSIDE COUNTY, CA	MICHAEL BRANDMAN ASSOCIATES, Irvine, CA	

Report List

Report No.	Other IDs	Year	Author(s)	Title	Affiliation	Resources
RI-05829	NADB-R - 1087192	2001	APPLIED EARTHWORKS, INC.	CULTURAL RESOURCES SURVEY REPORT, A COMPREHENSIVE REPORT ON THE ARCHAEOLOGICAL INVESTIGATIONS CONDUCTED WITHIN THE SOUTHWESTERN RIVERSIDE COUNTY MULTI-SPECIES RESERVE	APPLIED EARTHWORKS, INC.	33-000509, 33-000555, 33-000804, 33-000862, 33-001162, 33-001805, 33-001824, 33-002107, 33-002770, 33-002772, 33-002773, 33-003068, 33-003136, 33-003644, 33-003646, 33-003647, 33-004296, 33-004297, 33-004298, 33-004626, 33-004630, 33-004631, 33-004633, 33-004634, 33-004635, 33-004763, 33-004794, 33-004828, 33-004871, 33-004886, 33-004930, 33-005021, 33-005023, 33-005024, 33-005025, 33-005027, 33-005031, 33-005033, 33-005081, 33-005082, 33-005086, 33-005089, 33-005090, 33-005145, 33-005146, 33-005147, 33-005148, 33-005149, 33-005150, 33-005167, 33-005168, 33-005169, 33-005198, 33-005199, 33-005200, 33-005201, 33-005202, 33-005203, 33-005204, 33-005205, 33-005206, 33-005207, 33-005208, 33-005209, 33-005210, 33-005215, 33-005216, 33-005217, 33-005218, 33-005219, 33-005220, 33-005222, 33-005223, 33-005224, 33-005225, 33-005226, 33-005227, 33-005245, 33-005272, 33-005273, 33-005274, 33-005275, 33-005276, 33-005277, 33-005278, 33-005279, 33-005280, 33-005281, 33-005283, 33-005286, 33-005291, 33-005292, 33-005293, 33-005294, 33-005295, 33-005296, 33-005297, 33-005298, 33-005299, 33-005300, 33-005301, 33-006007, 33-006019, 33-006020, 33-006021, 33-006022, 33-006023, 33-006024, 33-006025, 33-006026, 33-006027, 33-006028, 33-006029, 33-006030, 33-006031, 33-006032, 33-006033, 33-006034, 33-006035, 33-006036, 33-006037, 33-006038, 33-006039, 33-006040, 33-006041, 33-006042, 33-006044, 33-006045, 33-006046, 33-006047, 33-006048, 33-006049, 33-006050, 33-006051, 33-006052, 33-006053, 33-006054, 33-006055,

Report List

Report No.	Other IDs	Year	Author(s)	Title	Affiliation	Resources
						33-006056, 33-006057, 33-006058, 33-006059, 33-006060, 33-006061, 33-006062, 33-006063, 33-006064, 33-006065, 33-006066, 33-006067, 33-006068, 33-006069, 33-006070, 33-006071, 33-006072, 33-006073, 33-006074, 33-006075, 33-006076, 33-006077, 33-006078, 33-006079, 33-006080, 33-006081, 33-006082, 33-006083, 33-006084, 33-006085, 33-006086, 33-006087, 33-006088, 33-006089, 33-006090, 33-007245, 33-007845, 33-007931, 33-007932, 33-007933, 33-007934, 33-007935, 33-007936, 33-007937, 33-007938, 33-007939, 33-007940, 33-007941, 33-007942, 33-007943, 33-007944, 33-007945, 33-007946, 33-007947, 33-007948, 33-007949, 33-007950, 33-007951, 33-007952, 33-007953, 33-007954, 33-007955, 33-007956, 33-007957, 33-007958, 33-007959, 33-007960, 33-007961, 33-007962, 33-007963, 33-007964, 33-007965, 33-007966, 33-007967, 33-007968, 33-007969, 33-007970, 33-007971, 33-007972, 33-007973, 33-007974, 33-007975, 33-007976, 33-007977, 33-007978, 33-007979, 33-007980, 33-007981, 33-007982, 33-007983, 33-007984, 33-007985, 33-007986, 33-007987, 33-007988, 33-007989, 33-007990, 33-007991, 33-007992, 33-007993, 33-007994, 33-007995, 33-007996, 33-007997, 33-007998, 33-007999, 33-008000, 33-008001, 33-008002, 33-008003, 33-008004, 33-008005, 33-008006, 33-008007, 33-008008, 33-008009, 33-008010, 33-008011, 33-008012, 33-008013, 33-008014, 33-008015, 33-008016, 33-008017
RI-07034		2006	Jean A. Keller, Ph.D.	A Phase I Cultural Resources Assessment of Tentative Tract Map 34130	Cultural Resources Consultant	33-014837, 33-015044

Report List

Report No.	Other IDs	Year	Author(s)	Title	Affiliation	Resources
RI-07833	Other - SCE 2007 CWA 89/Contract No. 01088.07	2008	Andrea M. Craft and Theodore G. Cooley	Archaeological Survey Report for Southern California Edison Company Avenger 12kV DSP Project, Riverside County, California (WO #6577-5344, AI#6-5347 and WO#6177- 5355, AI#6-5348)	Jones & Stokes	33-005329, 33-005780, 33-015044, 33-015661, 33-015734, 33-015743, 33-015901, 33-017000, 33-017001, 33-017002, 33-017003, 33-017004
RI-08189		1995	Mark C. Robinson	Revised Draft Report, Metropolitan Water District Domenigoni Valley Reservoir Project, Addendum: Cultural Resources Survey Repoort Number 13 Eastside Pipeline Project	INFOTEC Research, Inc., Fresno, CA	
RI-08250		2001	Susan G. Goldberg, ed	Metropolitan Water District of Southern California: Eastside Reservoir Project Final Report of Archaeological Investigations Volume V: Technical Studies	Applied EarthWorks, Inc., Hemet, CA	33-000862, 33-001162, 33-004624, 33-004625, 33-004627, 33-004628, 33-004629, 33-004630, 33-004744, 33-004771, 33-004772, 33-004792, 33-004798, 33-004802, 33-004807, 33-004817, 33-004818, 33-004819, 33-004820, 33-004821, 33-004823, 33-004828, 33-004831, 33-004843, 33-004869, 33-004930, 33-005027, 33-005030, 33-005031, 33-005045, 33-005076, 33-005086, 33-005231, 33-005271, 33-005459, 33-006884, 33-006981, 33-008180, 33-008187, 33-008197, 33-008205
RI-08495	Agency Nbr - District 8-RIV-79-KP R25.4/R54.4 (PM R15.78/R33.80) 08- 494000; Caltrans - District 8- RIV-79-KP R25.4/R54.4 (PM R15.78/R33.80) 08- 494000	2010	Joan George, Vanessa Mirro, and Elizabeth Dennison	Supplemental Cultural Resources Survey Report: Cultural Resources in Southern San Jacinto Valley: Realign State Route 79 between Domenigoni Parkway and Gilman Springs Road in the Cities of Hemet and San Jacinto and the County of Riverside. Riverside County, California	Applied EarthWorks	33-009014, 33-009632, 33-009712, 33-014251, 33-014815, 33-014818, 33-014819, 33-014821, 33-014822, 33-014823, 33-014826, 33-014827, 33-014829, 33-014830, 33-014831, 33-014832, 33-014833, 33-014834, 33-014835, 33-014836, 33-014837, 33-014838, 33-015446, 33-015447, 33-015661, 33-017631, 33-017632, 33-017633, 33-017634, 33-017635
RI-09062		2012	Jean A. Keller	A PHASE I CULTURAL RESOURCES ASSESSMENT OF CHANGE OF ZONE 7307 (TENTATIVE TRACT MAP 34130) APN 465- 170-001, 002, 014,015,024,025	Cultural Resources Consultant	33-014837, 33-015044, 33-017634

Report List

Report No.	Other IDs	Year	Author(s)	Title	Affiliation	Resources
RI-09689		2014	Antonina M. Delu, John J. Eddy, and Gabrielle Duff	First Supplemental Historic Property Survey Report Realign State Route 79 between Domenigoni Parkway and Gilman Springs Road in the Cities of Hemet and San Jacinto and the County of Riverside, Riverside County, California, District 8-RIV-79-KP R25.4/R54.4 (PM R15.78/R33.80), PN 0800000784/EA 08-49400	Applied Earthworks	33-005461, 33-005462, 33-006884, 33-007266, 33-007267, 33-007836, 33-007837, 33-014814, 33-014816, 33-014817, 33-014820, 33-014824, 33-014825, 33-014839, 33-014840, 33-014841, 33-015442, 33-015443, 33-015444, 33-015445, 33-015448, 33-015449, 33-015450, 33-015658, 33-015659, 33-015662, 33-015664, 33-015676
RI-09690		2014	Antonina Delu and Gabrielle Duff	First Supplemental Archaeological Survey Report Realign State Route 79 between Domenigoni Parkway and Gilman Springs Road in the Cities of Hemet and San Jacinto and the County of Riverside, Riverside County, California, District 8RIV-79-KP R25.4/R54.4 (PM R15.78/R33.80), PN 0800000784/EA 08-49400	Applied Earthworks, Inc.	
RI-09691		2014	John J. Eddy, M. Colleen Hamilton, Susan K. Goldberg, Dennis McDougall, and Gabrielle Duff	Archaeological Evaluation Report Realign State Route 79 between Domenigoni Parkway and Gilman Springs Road in the Cities of Hemet and San Jacinto and the County of Riverside, Riverside County, California, District 8-RIV-79-KP R25.4/R54.4 (PM R15.78/R33.80), PN 0800000784/EA 08-49400	Applied Earthworks, Inc.	33-005202, 33-005461, 33-005462, 33-007266, 33-007267, 33-007836, 33-014814, 33-014816, 33-014817, 33-014820, 33-014824, 33-014825, 33-014839, 33-014840, 33-014841, 33-015442, 33-015443, 33-015444, 33-015445, 33-015448, 33-015449, 33-015450, 33-015658, 33-015659, 33-015662, 33-015664, 33-015676
RI-09704		2016	Riordan Goodwin	Cultural Resources Assessment Rancho Diamante Project City of Hemet Riverside, California	LSA Associates, Inc.	
RI-09824		2011	Andrew Belcourt	Cultural Resources Assessment Hemet-Ryan Airport Master Plan City of Hemet RIVERSIDE County, California	LSA Associates, INC.	
RI-10010	Other - Volume III: Nonresidential Sites	2001	Susan K. Goldberg	Metropolitan water District of Southern California, Eastside Reservoir Project. Final Report of Archaeological Investigations. Volume III: Nonresidential Sites	Applied earthWorks, Inc.	33-000862, 33-004624, 33-004625, 33-004627, 33-004629, 33-004630, 33-004798, 33-004819, 33-004930, 33-005045, 33-005078, 33-006031
RI-10523		1996	John M. Foster	CA-RIV-5199H and CA-RIV-5202 Clearance Letter	Greenwood and Associates	33-005199, 33-005202
RI-10524		1996	Daniel G. Landis, Mark Swanson, and B. Tom Tang	History and Historical Archaeology of the Domenigoni Valley	Greenwood and Associates	

Report List

Report No.	Other IDs	Year	Author(s)	Title	Affiliation	Resources
RI-10814		2001	Daniel G. Foster, Mark V. Thornton, and Maria C. Sosa	Management Plan for CDF's Historic Buildings and Archaeological Sites	California Department of Forestry and Fire Protection	33-001889, 33-001890, 33-001891, 33-001892, 33-003090, 33-003091, 33-003092, 33-005776, 33-005777, 33-005778, 33-005779, 33-005780

APPENDIX B
DPR SITE RECORDS

CONTINUATION SHEET

Primary # 33-015743 (Update)

HRI # _____

Trinomial CA-RIV-8196

Page 1 of 2

*Resource Name or #: (Assigned by recorder) San Jacinto Valley Railway

*Recorded by Riordan Goodwin

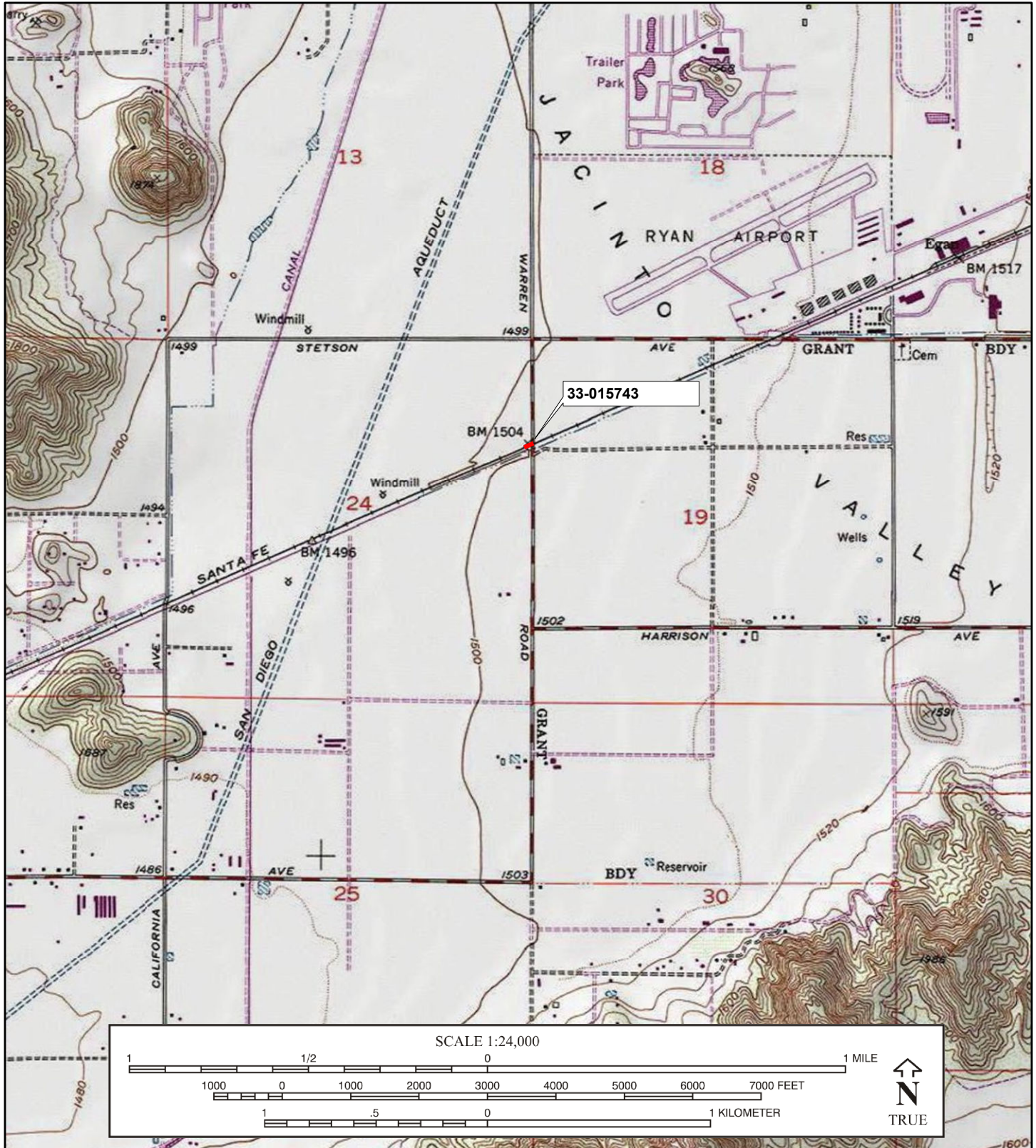
*Date: 11/26/19

Continuation _____ Update

The short segment of the 1880s line that transects the project area (approximately 130 feet) is located between Stetson Avenue and Corte de Mar on Warren Road (see Location Map). At the intersection of the railroad with Warren Road, there is a traditional black and white railroad crossing sign, approximately 8 feet tall. There is one set of rails, with associated ties and ballast berm. The railroad is standard gauge track (4'-8" spacing) with 39-foot long steel rails which were replaced (marked with "COLORADO SEC. 903. XII. 1914. OH"). The setting is predominantly rural, but suburban development has encroached to the south of Warren Road. This segment has sustained damage - one of the rails has been severely bent/separated from the ties, some ties have been displaced. In addition, the rails are very rusted and the ballast berm and ties have been obscured by soil and xeric vegetation. Therefore the segment lacks physical integrity and does not contribute to the eligibility of the resource as a whole for the California Register.



View east-northeast along south side of the tracks – note damaged rail and displaced ties.



Page 1 of 1

Map Reference #:

*Resource Name or # Mustang Farm

*Recorded by: Logan Freeberg & Kerrie Absher, LSA

*Date : 6-Aug-16 Continuation Update

First recorded in the late 2000s, this site was revisited during the current survey for the Rancho Diamante Project. It is marked by remnant landscaping trees and mounds of soil containing concrete rubble. The nature and condition of the resource are consistent with the original site record (Dice 2007). There is still modern debris consisting of large fragments of structural concrete, construction-type road base gravel, and modern refuse such as a broken table, baby car seat, and two mattresses. No historic-period features or artifacts were observed in the area.

Dice, Michael
2007 Site record for 33-15900.



Photo 1: Overview of structural debris, facing southwest.

State of California - The Resources Agency
 DEPARTMENT OF PARKS AND RECREATION
PRIMARY RECORD

Primary # _____
 HRI # _____
 Trinomial _____
 NRHP Status Code _____

Other Listings _____
 Review Code _____ Reviewer _____ Date _____

Page 1 of 3 *Resource Name or #: (Assigned by recorder) LSA-HET1601-S-1

P1. Other Identifier: Hemet Channel

*P2. Location: Not for Publication Unrestricted *a. County Riv and (P2b and P2c or P2d. Attach a Location Map as necessary.)

*b. USGS 7.5' quad Winchester, CA Date 1976 T 5S ; R 2W ; SE 1/4 of NE 1/4 of Sec 24 ; SB B.M.

c. Address _____ City Hemet ZIP _____

d. UTM (Give more than one for large and/or linear resources) Zone 11 East: 497001 mE / 3731651 mN
 West 496959 3731636

e. Other Locational Data: (e.g., parcel #, directions to resource, elevation, etc., as appropriate) APN _____
 This resource is at approximately 1,500 feet elevation, accessed from State Route 74 via Warren Road north.

*P3a. Description: (Describe resource and its major elements. Include design, materials, condition, alterations, size, setting, and boundaries)
 This is a 150-foot unlined segment of the Hemet Channel, which is a western continuation of the Florida Avenue storm drain that begins at approximately the crossing of Palm and Florida Avenues. It is the major storm drain for the City of Hemet and although it dates to at least the early 1940s, it was constructed in its existing configuration by the Riverside County Flood Control and Water Conservation District (RCFCWCD) in the early 1970s, except for revisions at Acacia Avenue in 1980. It was considered an interim facility in the mid-1980s.

*P3b. Resource Attributes: (List attributes and codes) HP20 (drainage channel)

*P4. Resources Present: Building Structure Object Site District Element of District Other (Isolates, etc.): _____

P5a. Photo or drawing (Photo required for buildings, structures, and objects.)

P5b. Description of Photo: (View, data, accession #)
 View west from Warren Road/#2340

*P6. Date Constructed/Age and Sources:
 Historic Prehistoric
 Both
 Date: Pre-WWII
 Born et al. 1982 /USGS 1942

*P7. Owner and Address:
 RCFCWCD
 1995 Market Street
 Riverside, California 92501

*P8. Recorded by: (Name, affiliation, and address):
 Riordan Goodwin
 LSA Associates, Inc.
 1500 Iowa Avenue, Suite 200
 Riverside, California 92507

*P9. Date recorded: 11/27/2019

*P10. Survey Type: (Describe)
 Intensive Pedestrian



*P11. Report citation: (Cite survey report and other sources or enter "none.")
Goodwin, Riordan 2019: Cultural Resource Assessment, Rancho Diamonte Project, City of Hemet, Riverside County, California

Attachments: None Location Map Sketch Map Continuation Sheet Building, Structure, and Object Record
 Archaeological Record District Record Linear Feature Record Milling Station Record
 Rock Art Record Artifact Record Photograph Record Other (list): _____

State of California c The Resources Agency
 DEPARTMENT OF PARKS AND RECREATION
LINEAR FEATURE RECORD

Primary # _____
 HRI # _____
 Trinomial _____

Page 2 of 3 *Resource Name or #: (Assigned by recorder) LSA-HET1601-S-1

L1. **Historic and/or Common Name:** Hemet Channel

L2a. **Portion Described:** Entire Resource X Segment Point Observation **Designation:**

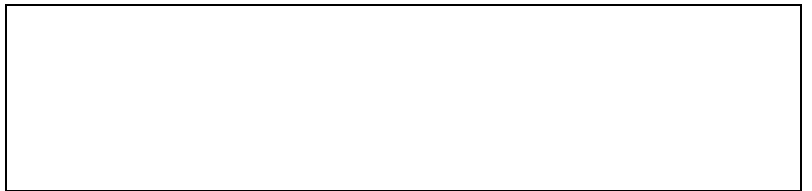
L2b. **Location of point or segment:** (Provide UTM coordinates, legal description, and any other useful locational data. Show the area that has been field inspected on a Location Map)

The short segment that transects the project area (approximately 150 feet) is located between Stetson Avenue and Corte de Mar on Warren Road.

L3. **Description:** (Describe construction details, materials, and artifacts found at this segment/point. Provide plans/sections as appropriate.)
 Trapezoidal unlined drainage channel with metal and concrete culvert under Warren road and concreted rip-rap on the west side of the road

L4. **Dimensions:** (In feet for historic features, meters for prehistoric features) **L4e. Sketch of Cross Section (include scale) Facing:** _____

- a. **Top Width** ~40 feet
- b. **Bottom Width** 10-20 feet
- c. **Height or Depth** ~10 feet
- d. **Length of Segment** 150 feet



L5. **Associated Resources:** Florida Storm Drain

L6. **Setting:** (Describe natural features, landscape characteristics, slope, etc., as appropriate.)
 The setting is predominantly rural agricultural fields, but suburban development has encroached to the south side of Warren Road.

L7. **Integrity Considerations:** Integrity of still-functioning channel is good, but culvert and rip-rap appear recent.

L8a. **Photograph, Map or Drawing**

L8b. **Description of Photo, Map, or Drawing**

(view, scale, etc.)

View east from Warren Road

L9. **Remarks:**

L10. **Form Prepared by:**

Riordan Goodwin
 LSA Associates, Inc.
 1500 Iowa Avenue, Suite 200
 Riverside, California 92507



State of California - Resource Agency
DEPARTMENT OF PARKS AND RECREATION
LOCATION MAP

Primary # _____
HRI # _____
Trinomial _____

