



Humboldt County Public Works Department

NOTICE OF AVAILABILITY OF DRAFT ENVIRONMENTAL IMPACT REPORT/ENVIRONMENTAL ASSESSMENT

DATE: October 29, 2021

PROJECT TITLE: Honeydew Bridge (No. 4C-055) Replacement Project

TO: Office of Planning and Research, Responsible and Trustee Agencies, Interested Organizations and Parties

CEQA LEAD AGENCY: Humboldt County Public Works Department
1106 Second Street
Eureka, CA 95501

CONTACT: Andrew Bundschuh, Environmental Compliance Manager

INTRODUCTION

The Humboldt County Public Works Department (County), as the lead agency under the California Environmental Quality Act (CEQA), and California Department of Transportation (Caltrans) District 1, as the lead agency under the National Environmental Policy Act (NEPA), as assigned by the Federal Highway Administration, announce the availability of the joint Draft Environmental Impact Report (EIR)/Environmental Assessment (EA) to evaluate and address the potential impacts of implementing the Honeydew Bridge (No. 4C-055) Replacement Project (proposed Project) (SCH No. 20170222027).

The proposed Project location, description, and summary of impacts are described below.

PROPOSED PROJECT LOCATION/SETTING

The 28.10-acre project area is defined by the extents of the project construction limits and includes the temporary work area, contractor staging locations, the temporary detour alignment, local road segments (Wilder Ridge Road, Mattole Road, Burrell Road), and the Honeydew Bridge itself. The project area is centered on Honeydew Bridge and a reach of the Mattole River, and the bank and uplands on either side of the river. It is shown on the *Honeydew and Shubrick Peak, California* U.S. Geological Survey (USGS) quadrangle in Townships 2 and 3S, Range 1W, Sections 1 and 36. The approximate center of the study area is at latitude 40.244210, longitude -124.124925. Figure 1 shows the approximate location of the proposed Project.

PROPOSED PROJECT DESCRIPTION

Honeydew Bridge is within the unincorporated community of Honeydew in southwestern Humboldt County, California. Honeydew lies along Mattole Road, which is a rural, two-lane road that stretches from Highway 101 through the communities of Bull Creek, Honeydew, and Petrolia. North of Petrolia it parallels the Pacific Coast in an area known as the "Lost Coast" and turns inland where it terminates in the city of Ferndale. Wilder Ridge Road intersects Mattole Road just south of Honeydew Bridge. Burrell Road intersects Mattole Road just north of Honeydew Bridge and continues 2 miles west where it parallels the Mattole River. Rural residences line Mattole Road near the approximately project site.

The four project alternatives currently being considered are the No-Build Alternative and three build alternatives including the recommended Preferred Alternative. All three build alternatives would cross the Mattole River using a two-span configuration. Also common to all three would be the construction of the north abutment, which would be supported by steel H-piles, and the south abutment and center pier, which would be supported by cast-in-drilled-hole (CIDH) piles. Staging would occur at three locations: (1) along Wilder Ridge Road, just southeast of the intersection with Mattole Road; (2) all along the south bank gravel bar near and beneath the existing bridge; and (3) at the north Mattole Road bridge approach.

The project would replace the existing 386-foot-long by 17-foot-wide, single-lane, two-span, steel camelback through-truss style bridge with a new 375-foot structure that would carry two lanes of traffic, each 11 feet wide with 2-foot-wide bridge rails and 3-foot shoulders for a total width of 32 feet. The new bridge would consist of two equal spans and be supported by a north and south abutment and a center pier. The recommended Preferred Project Alternative, action Alternative 2, would consist of a haunched, composite welded steel girder structure and new roadway approaches.

The project would require a temporary detour bridge to maintain access over the Mattole River during construction. The detour bridge would be constructed approximately 1,600 feet downstream (west) from the existing bridge. The detour bridge would maintain a through-traffic connection between Mattole Road on the north and south sides of the Mattole River, while also providing construction access for the duration of the project. The detour bridge would cross the main channel of the Mattole River and would consist of a single-span, prefabricated bridge provided by the contractor. It would span from a temporary gravel approach road at the south riverbank to a temporary gravel approach on the north bank, connecting to Burrell Road.

During the second season of construction, the existing bridge would be removed to allow for construction of the new bridge in a similar alignment. An interpretive site, including a memorial plaque, would be established near the northwest corner of the new bridge alignment to commemorate the history of the existing bridge.

PROPOSED PROJECT IMPACTS

The proposed Project would not result in any significant and unavoidable impacts on the environment. All other potential impacts would be less than significant or reduced to a less than significant level with proposed mitigation measures. These impacts include traffic and transportation/pedestrian and bicycle facilities; visual/aesthetics; cultural resources; public services; hydrology and floodplain; water quality and stormwater runoff; geology/soils; paleontology; hazardous waste/materials; air quality; noise; greenhouse gases; and biological resources.

AVAILABILITY OF THE DRAFT EIR/EA

A digital copy of the Draft EIR/EA is available for download on the County's website at: <https://humboldt.gov/2216/Honeydew-Bridge-Replacement>. Hard copies are available for viewing at the following locations:

- Caltrans District 1 Headquarters, 1656 Union Street, Eureka, CA 95501
- Humboldt County Public Works Department, 1106 2nd Street, Eureka, CA 95501
- Humboldt County Library, 1313 3rd St, Eureka, CA 95501
- Honeydew Country Store and U.S. Post Office, 44670 Mattole Road, Honeydew, CA95545
- Petrolia General Store, 40 Sherman Road, Petrolia, CA 95558

ONLINE PUBLIC MEETING

In response to California's Executive Order N-33-20 in association with large gatherings and Covid-19, the County and Caltrans will hold an **online public meeting** to provide an overview of the proposed Project and direction on submitting written comments on the Draft EIR/EA. No in-person meetings will be held during the 45-day public comment period. Attendees may participate virtually via WebEx by accessing the Project website. Meeting details are as follows:

Date: November 16, 2021

Time: 5:00 p.m.: Webinar and Conference Line Open

5:10 p.m.: Presentation Starts

5:10 – 5:45 p.m.: Project Presentation (approximate)

5:45 – 6:25 p.m. Public Questions (approximate)

6:30 p.m.: Meeting Adjourned

Access the Online Meeting at the Project Website: <https://deavpm.wixsite.com/honeydew>

SUBMITTING COMMENTS

Written comments on the Draft EIR/EA may be submitted from October 29, 2021 to December 13, 2021. Written comments should be submitted to Tony Seghetti at the following physical or e-mail address by **5:00 p.m. on December 13, 2021** and include "Attn: Honeydew Bridge Replacement Project."

Tony Seghetti, Deputy Director Engineering

Humboldt County Public Works Department

1106 Second Street

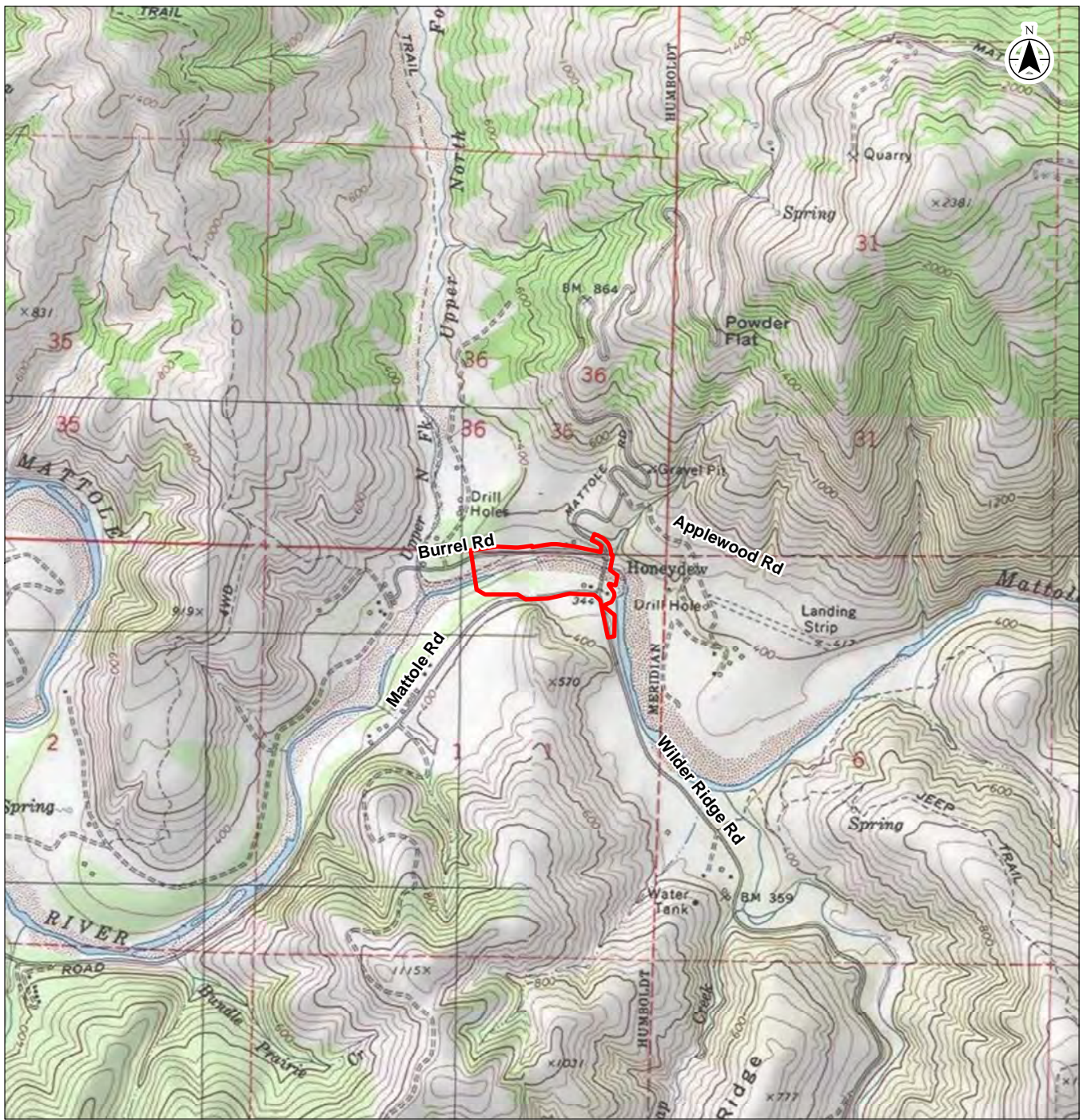
Eureka, CA 95501

E-mail: PWEngineering@co.humboldt.ca.us

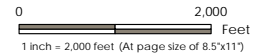
All comments should include the name, email address, phone number, and mailing address of the contact person submitting the comments.

For more information about the proposed Project please visit the Project website:

<https://humboldt.gov/2216/Honeydew-Bridge-Replacement>



 Study Area (28.10 acres)



Project Location
Humboldt County, California

2272005100
Prepared by IM on 2019-05-17
Revised by SI on 2020-06-17

Client/Project
Humboldt County
Honeydew Bridge Replacement Project

Figure No.
S-1

Title
Project Location

- Notes
1. Coordinate System: NAD 1983 StatePlane California I FIPS 0401 Feet
 2. Base map: ESRI USA Topo Maps web mapping service
 3. Public Land Survey: T02S, R01W, Sec. 36, T03S, R01W, Sec. 1
 4. USGS 7.5 Quad: Honeydew 1970, Shubrick Peak 1969

Disclaimer: Stantec assumes no responsibility for data supplied in electronic format. The recipient accepts full responsibility for verifying the accuracy and completeness of the data. The recipient releases Stantec, its officers, employees, consultants and agents, from any and all claims arising in any way from the content or provision of the data.