

**Appendix C** Bridge and Detour Construction—  
Sheet Pile Information Packet

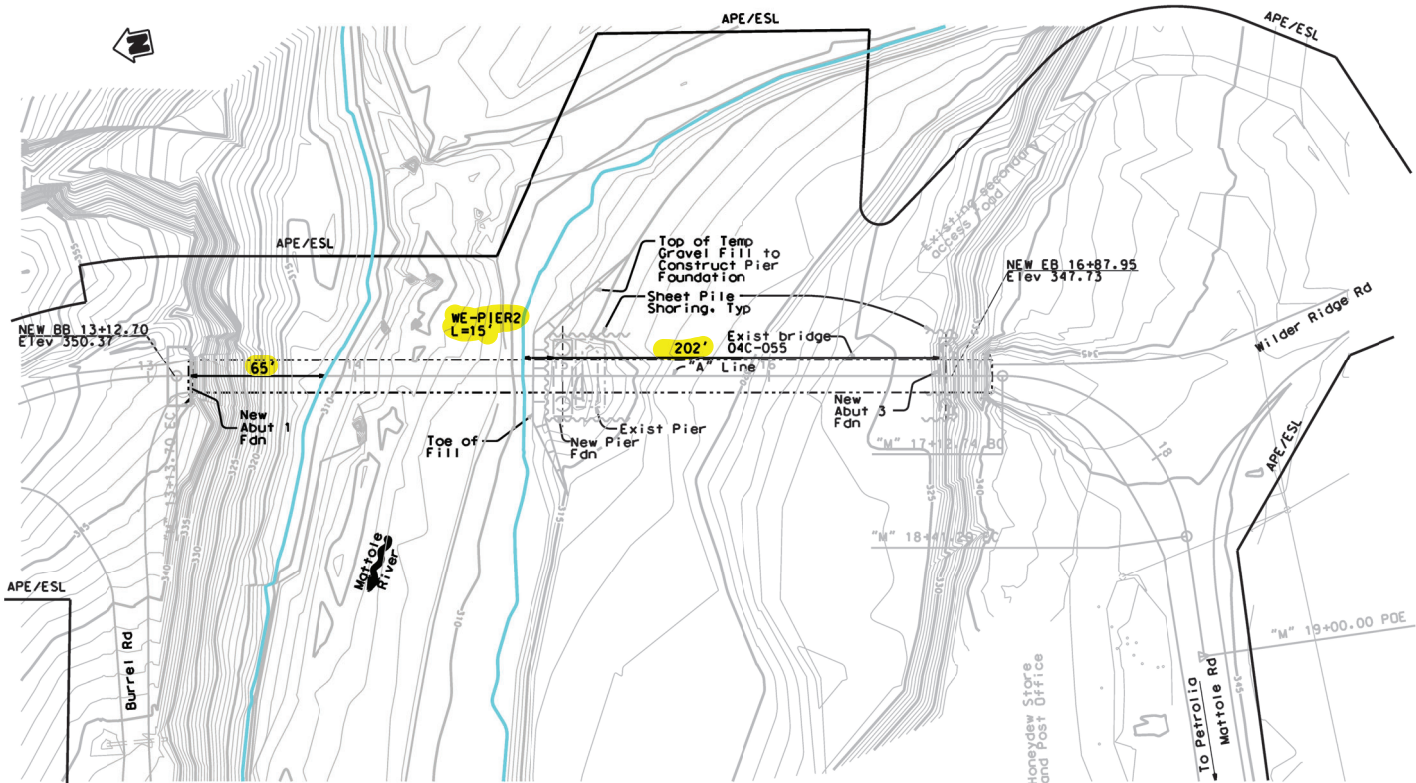
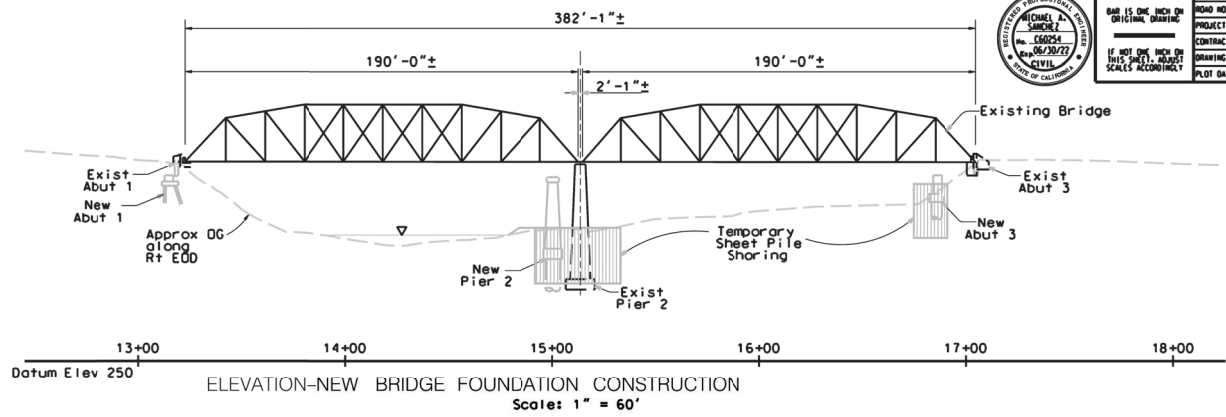
---



ROAD NAME: MATTOLE ROAD	ROAD NO.1: XXXX	MILE POST: XX	DESIGNED BY: RP
PROJECT NO.1: XXXX-XXXX	EA NO.1	CONTRACT NO.1: XXXX	PPNO.1
DRAWING FILE NAME:	REVISION DATE: XX-XX-XXXX	APPROVED BY:	
PLOT DATE: 7-8-2020			

COUNTY OF HUMBOLDT DEPARTMENT OF PUBLIC WORKS	SHEET
MATTOLE ROAD AT MATTOLE RIVER BRIDGE REPLACEMENT PROJECT (AT HONEYDEW)	OF
BRIDGE FOUNDATION CONSTRUCTION SEASON 1	XX

30% SUBMITTAL



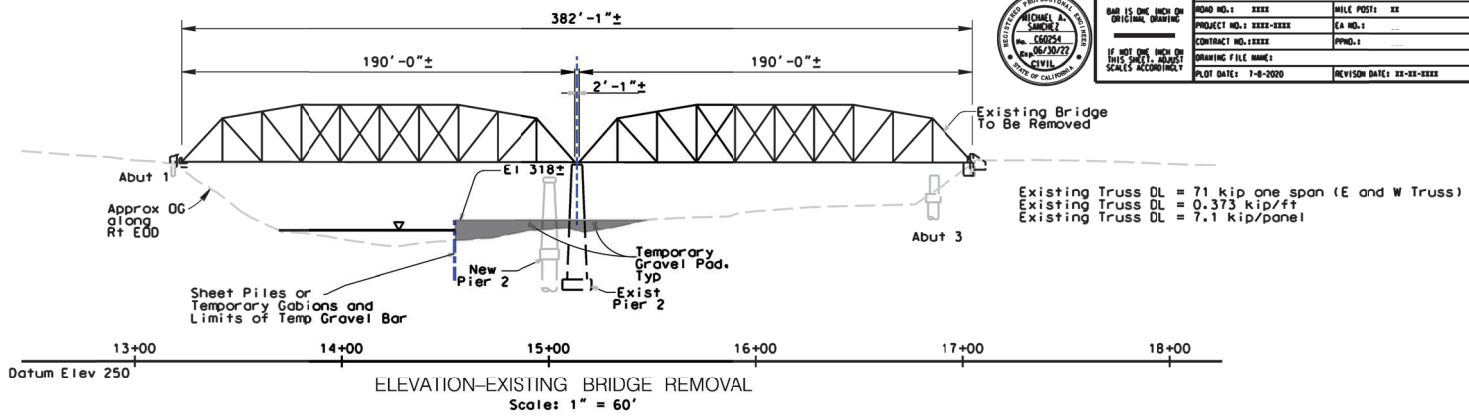
- DISTANCES TO FOUNDATIONS**
- TYPICAL WATER SURFACE ELEV = 311**
- ABUT1 - WE = 65'
  - WE - PIER2 = 15'
  - WE - ABUT3 = 202'

EXHIBIT - 1

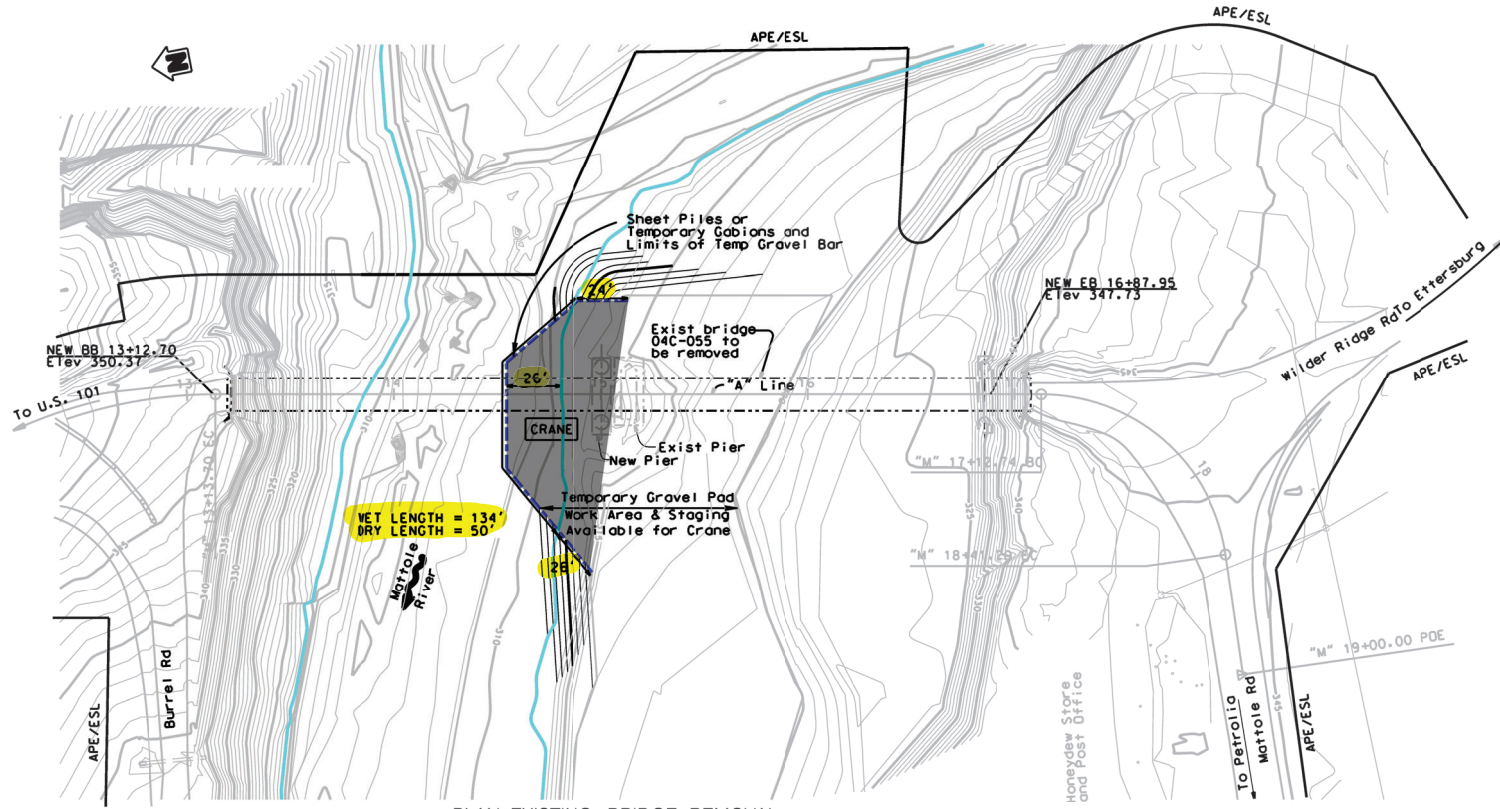


ROAD NAME: MATTOLE ROAD	DESIGNED BY: RP	COUNTY OF HUMBOLDT DEPARTMENT OF PUBLIC WORKS MATTOLE ROAD AT MATTOLE RIVER BRIDGE REPLACEMENT PROJECT (AT HONEYDEW)
ROAD NO.: XXXX	MILE POST: XX	
PROJECT NO.: XXXX-XXXX	EA NO.: XXXX	
CONTRACT NO.: XXXX	PHNO.: XXXX	
DRAWING FILE NAME:	REVISION DATE: XX-XX-XXXX	
PLOT DATE: 7-8-2020	APPROVED BY:	SHEET OF XX

30% SUBMITTAL



ELEVATION-EXISTING BRIDGE REMOVAL  
Scale: 1" = 60'



PLAN-EXISTING BRIDGE REMOVAL  
Scale: 1" = 60'

TYPICAL WATER SURFACE ELEV = 311

SOUTH CRANE PAD

SHEET PILE - WE = 26'  
WET LENGTH OF SHEET PILE = 134'  
DRY LENGTH OF SHEET PILE = 50'

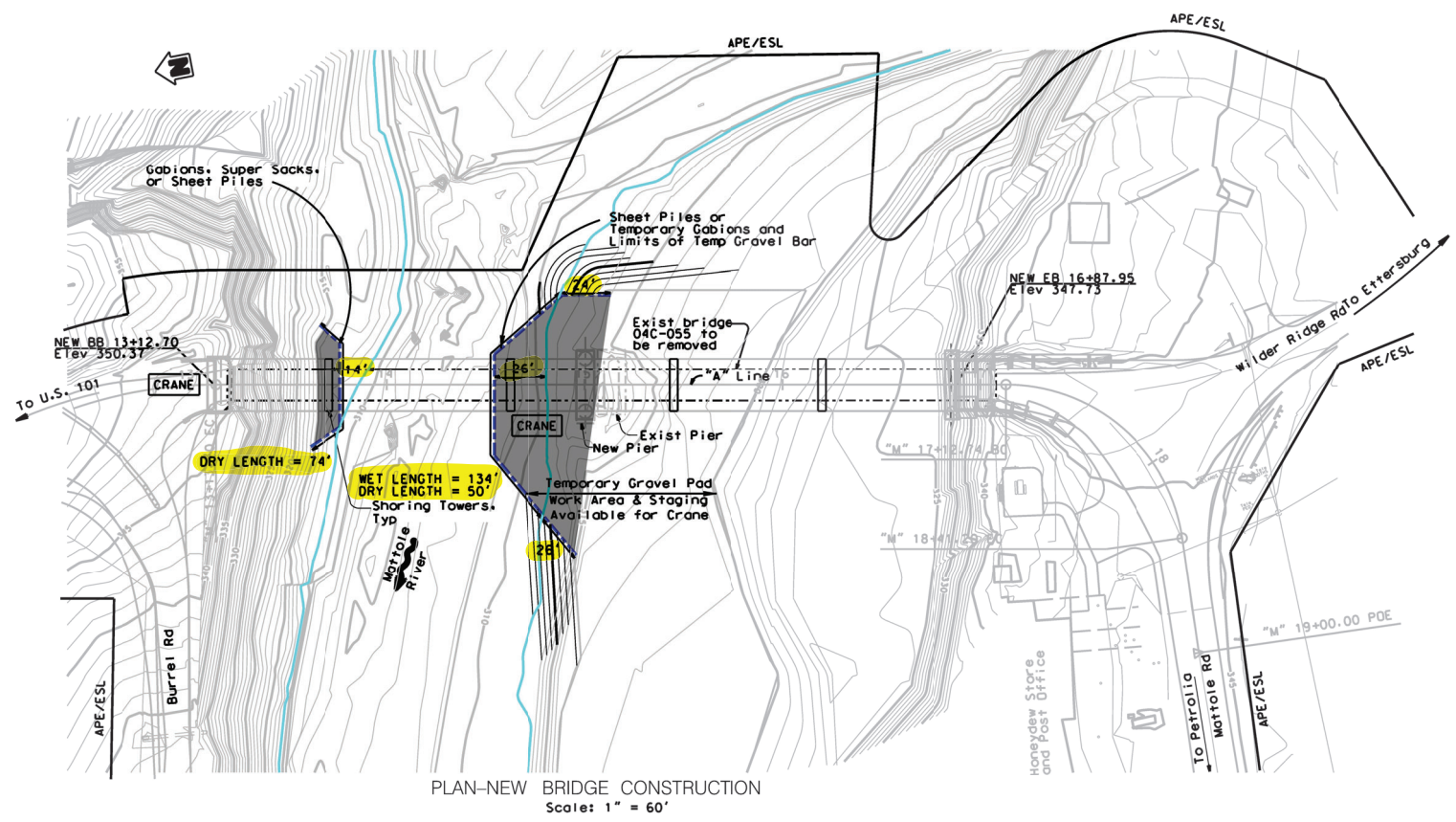
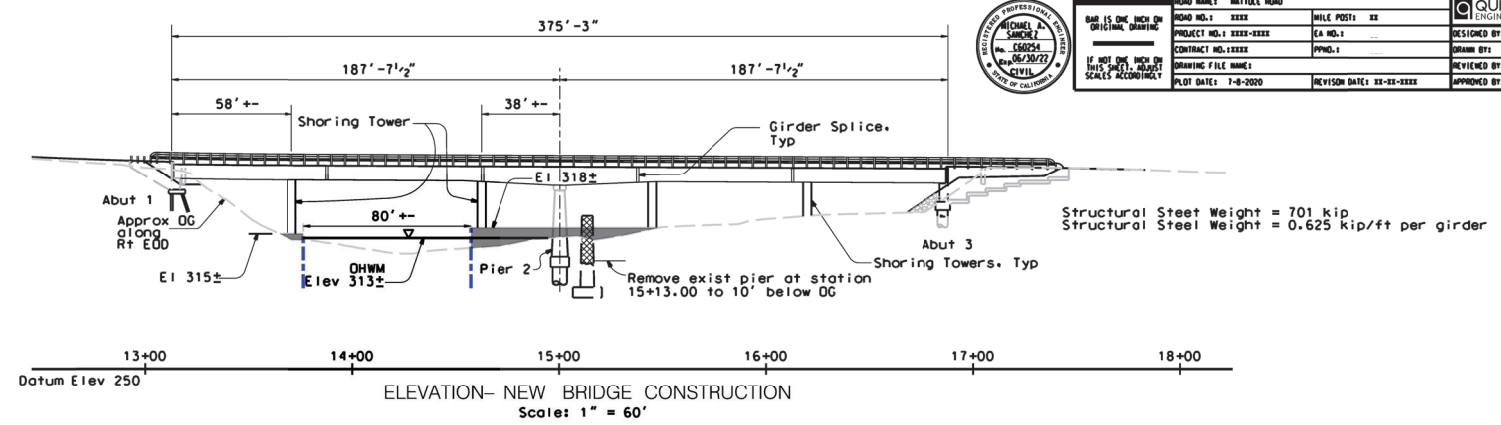
EXHIBIT - 2



ROAD NAME: MATTOLE ROAD	DESIGNED BY: KP	COUNTY OF HUMBOLDT DEPARTMENT OF PUBLIC WORKS MATTOLE ROAD AT MATTOLE RIVER BRIDGE REPLACEMENT PROJECT (AT HONEYDEW) BRIDGE CONSTRUCTION SEASON 2	
ROAD NO.: XXXX	MILE POST: XX		DRAWN BY: KP
PROJECT NO.: XXXX-XXXX	EA NO.:		REVIEWED BY: NS
CONTRACT NO.: XXXX	PHO.:		APPROVED BY:
DRAWING FILE NAME:	REVISION DATE: XX-XX-XXXX		
IF NOT ONE INCH BY THIS SCALE, READ SCALES ACCORDINGLY	PLOT DATE: 7-8-2020		

SHEET  
OF  
XX

30% SUBMITTAL



TYPICAL WATER SURFACE ELEV = 311

NORTH SHORING TOWER

SHEET PILE - WE = 14'  
 WET LENGTH OF SHEET PILE = 0'  
 DRY LENGTH OF SHEET PILE = 74'

SOUTH CRANE PAD

SHEET PILE - WE = 26'  
 WET LENGTH OF SHEET PILE = 134'  
 DRY LENGTH OF SHEET PILE = 50'

EXHIBIT - 3



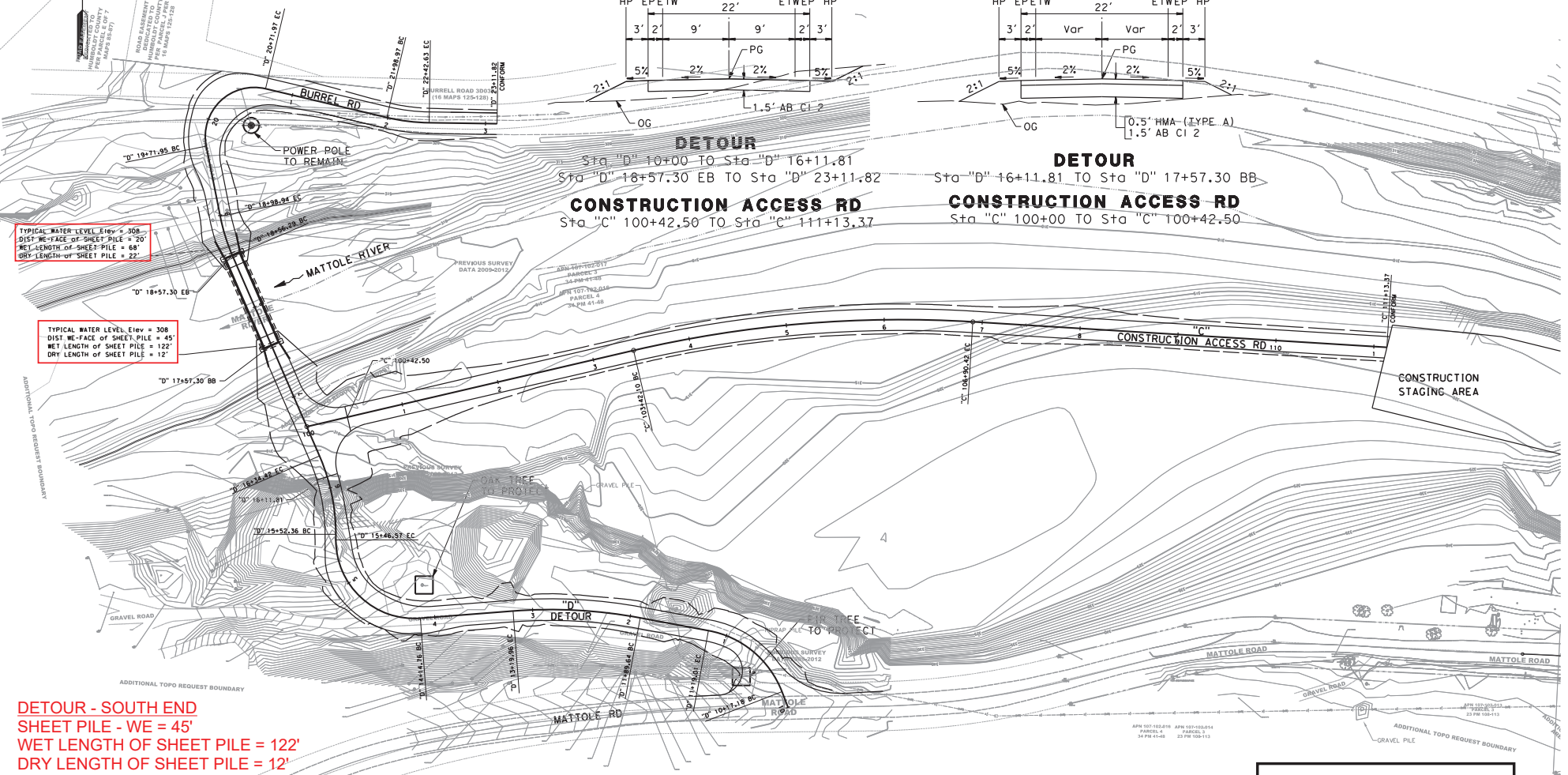
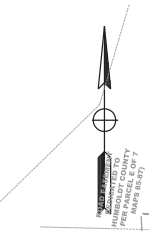
BAR IS ONE INCH ON ORIGINAL DRAWING	ROAD NAME: MATTOLE ROAD	ROAD NO.: XXXX	MILE POST: XX	QUINCY ENGINEERING
IF NOT ONE INCH ON THIS SHEET, ADJUST SCALES ACCORDINGLY	PROJECT NO.: XXXX-XXXX	EA NO.:	DESIGNED BY: KP	DRAWN BY: KP
	CONTRACT NO.: XXXX	PHO.:	REVIEWED BY: WS	APPROVED BY:
	DRAWING FILE NAME:	REVISION DATE: XX-XX-XXXX		
	PLOT DATE: 7-8-2020			

COUNTY OF HUMBOLDT DEPARTMENT OF PUBLIC WORKS MATTOLE ROAD AT MATTOLE RIVER BRIDGE REPLACEMENT PROJECT (AT HONEYDEW)	SHEET X OF XX
DETOUR LAYOUT SEASONS 1 AND 2	

30% SUBMITTAL

DETOUR - NORTH END  
WE - SHEET PILE = 20'  
WET LENGTH OF SHEET PILE = 68'  
DRY LENGTH OF SHEET PILE = 22'

TYPICAL WATER SURFACE ELEV = 308



TYPICAL WATER LEVEL Elev = 308  
DIST WE-FACE OF SHEET PILE = 20'  
WET LENGTH OF SHEET PILE = 68'  
DRY LENGTH OF SHEET PILE = 22'

TYPICAL WATER LEVEL Elev = 308  
DIST WE-FACE OF SHEET PILE = 45'  
WET LENGTH OF SHEET PILE = 122'  
DRY LENGTH OF SHEET PILE = 12'

DETOUR - SOUTH END  
SHEET PILE - WE = 45'  
WET LENGTH OF SHEET PILE = 122'  
DRY LENGTH OF SHEET PILE = 12'

EXHIBIT - 5

SCALE: 1"=50'

DE-1