

APPENDIX G

Utilities Study

Inglewood Transit Connector Project

Utilities Engineering Report

August 20, 2021



City of Inglewood
One Manchester Boulevard
Inglewood, CA 90301

Table of Contents

- 1. Introduction 3
 - 1.1 Project Overview 3
 - 1.2 Purpose 3
 - 1.3 Ongoing Work 3
- 2. Utility Owners 4
 - 2.1 Contact Information 4
 - 2.2 Southern California Edison 4
 - 2.3 City of Inglewood 4
 - 2.4 West Basin Municipal Water District 5
 - 2.5 Southern California Gas Company 5
 - 2.6 AT&T 5
 - 2.7 LA County Flood District (LACFD) 5
 - 2.8 LA County Sanitation District 5 (LACSD-5) 5
 - 2.9 Los Angeles Department of Water and Power (LADWP) - Water 5
 - 2.10 Unknown Owners 6
- 3. Existing Conflict Conditions 6
 - 3.1 Electrical 6
 - 3.2 Storm Drains 7
 - 3.3 Sanitary Sewer 7
 - 3.4 Water 7
 - 3.5 Gas 8
 - 3.6 Telecommunications 8
 - 3.7 Utility Conflict Matrix 8

Appendix

- A. Utility Conflict Matrix Shortlist A1
- B. Utility Conflict Inventory B1
- C. Miscellaneous Notes C1

1. INTRODUCTION

1.1 Project Overview

In response to a community study conducted in 2018, the City of Inglewood (COI) began developing plans for a transit line connecting the new Metro Rail Crenshaw Line Downtown Inglewood Station to the major commercial and entertainment districts in the city. The Inglewood Transit Connector (ITC Project) has an estimated length of 1.6 miles that begins at the Market Street Station in downtown Inglewood. To best accommodate priority populations, the ITC is projected to have stations at The Forum and at SoFi Stadium. Current plans also include the addition of a mid-route maintenance storage facility. The ITC is projected to open in 2026 and aims to connect local communities, reduce traffic congestion and greenhouse gas emissions, and create a safe, convenient, and environmentally sustainable way to transport people through the city.

The Environmental Impact Report (EIR) draft was released in December 2020 and the final report is expected to be released in summer 2021. The ITC Project has so far been designed as an elevated automated people mover that will be supported by columns and straddle bents along Market St, Manchester Ave, and Prairie Ave.

1.2 Purpose

The purpose of this report is to provide an overview of existing utilities in the corridor, including those which may conflict with the proposed work and have a cost impact on the project. The types of utilities identified include electric, gas, telecommunications, water, sewer, and storm drain. This report emphasizes utility owners anticipated to have existing infrastructure within the project corridor.

1.3 Ongoing Work

As of August 2021, there are still a handful of utilities, including a few storm drains, which require more extensive verification due to conflicting information in as-builts and the project base-map. As further information is uncovered, relevant details in this report will be updated accordingly. Furthermore, as third-party agreements are developed with utility owners, specific choices and constraints regarding utility redesign will be incorporated into this report. Additionally, this report shall be accompanied by a set of plans which will provide visualization of existing utilities and planned new and redesigned utility services.

2. UTILITY OWNERS

Owners of any utilities within the project scope which represent clear or anticipated conflicts are further detailed in the below subsections 2.2-2.10.

2.1 Contact Information

Table 1. Owners of Utilities within ITC Footprint				
Utility	Owner	Contact	Phone	Email
Electric	Southern California Edison	Kim Gurule	(714) 796-9932	kimberlie.gurule@sce.com
Gas	Southern California Gas Co.	Jason Sum	(310) 687-2011	socalgastransmissionutilityrequest@semprautilities.com
Storm Drain	City of Inglewood	TBD		
	LA County Flood District	TBD		
Sewer	City of Inglewood	TBD		
	LA County Sanitation District 5	Robert C. Ferrante	(562) 699-7411	
		Esther Kang		engineeringcounter@lacsdsd.org
Telecom.	AT&T	Josh Casper	(310) 515-4029	cr2936@att.com
Water	City of Inglewood	TBD		
	West Basin Municipal Water District	Frank Fuchs		frankf@westbasin.org
		Jinho Kang		jinhok@westbasin.org
	LADWP, Water	Martin Lam		martin.lam@ladwp.com
Daryll Chenoweth		(626) 458-3109	dchenowe@dpw.lacounty.gov	

2.2 Southern California Edison

Southern California Edison (SCE) is the primary electricity supplier for Los Angeles County. SCE provides 14 million people with electricity across a service territory of approximately 50,000 square miles in Southern California. SCE owns and maintains three relevant infrastructure networks in Southern California: overhead lines, underground lines, and streetlights. The street lighting facilities within the project area include but are not limited to Prairie Ave, Manchester Blvd, Market St, and Regent St.

2.3 City of Inglewood

The City of Inglewood provided as-built information on water lines, sewer lines and storm drain lines. Relevant COI facilities in the project footprint include E-W water lines along Manchester Blvd, E Spruce Ave, E Nutwood St, Kelso St/Pincay Dr, E Arbor Vitae St (3x), and E Hardy St. There are N-S water lines along N Locust Ave, Manchester Blvd, and S Prairie Ave. E-W sewers run along Manchester Blvd, E Spruce Ave, and Manchester Dr. COI Sewers run N-S along N Hillcrest

Blvd, Manchester Blvd, between Manchester Terrace and Manchester Dr, and S Prairie Ave south of Arbor Vitae St. There are no COI storm drain facilities within the project footprint.

2.4 West Basin Municipal Water District

The West Basin Municipal (WBM) Water District provided as-builts of water lines within the project scope. There are 4 separate WBM water lines running N-S along S Prairie Blvd and one E-W along E Hardy St.

2.5 Southern California Gas Company

The Southern California Gas (SoCalGas) Company provides natural gas service for approximately 21.8 million customers, spanning roughly 24,000 square miles of California, and is the nation's largest natural gas distribution utility. Some major facilities within the project footprint include N-S lines along Fir Ave, La Brea Ave, Locust Ave, and Prairie Ave, and E-W along Regent St, Manchester Ave, Arbor Vitae, and Hardy St.

2.6 AT&T

AT&T owns and maintains telecommunications infrastructure throughout the project area. Telecom lines within the footprint include multiple N-S lines along La Brea Ave, Locust St, and the southern end of Prairie Ave. There are additional major E-W lines along Florence Ave, Regent St, and Manchester Ave.

2.7 LA County Flood District (LACFD)

The Los Angeles County Flood District is responsible for the maintenance and construction of flood protection, water conservation, and aesthetic/recreational water facilities throughout 2,700 square miles of LA County. Within the project scope, there are facilities along Manchester Ave and Prairie Ave.

2.8 LA County Sanitation District 5 (LACSD-5)

LACSD District 5 covers the western coastal and inland area of LA County bordered by Slauson Ave in the north, I-110 to the east, Manhattan/Hermosa/Redondo State Beach areas to the west, and Long Beach to the south. Within the project footprint, there are major LACSD-5 sewers running N-S along Prairie Ave and Manchester Blvd (also E-W). There are some minor sewers running E-W along Spruce Ave, Arbor Vitae St, and Kelso St.

2.9 Los Angeles Department of Water and Power (LADWP) - Water

The LADWP Water department operates myriad facilities throughout the County of Los Angeles and beyond, including underground water lines. Within the ITC footprint, there is only an underground water main line running N-S along the entire length of S Prairie Ave.

2.10 Unknown Owners

There are several utilities which do not yet have identified owners, some of which are in direct conflict with the ITC columns. These utilities include several water/irrigation lines (some of which may be independently operated by private entities such as Vons), street lighting/signaling lines, two sewer lines, electric lines, and one stretch of telecommunication line. As more information is uncovered, these utilities will be incorporated into the appropriate sections.

3. EXISTING CONFLICT CONDITIONS

All utilities within the project footprint have been marked as either Remove (R), Protect in Place (PIP), Support in Place (SIP), Remove & Relocate (R&R), or Protect in Place/Replace as Necessary (PIP/R) depending on their proximity to project structures and status as in-use or abandoned.

3.1 Electrical

Electrical utility conflicts which are likely to have a cost impact include a combination of streetlights (SL), Edison underground lines (SCE-UG), and Edison overhead lines (SCE-OH). Until further discussion is conducted regarding the plan of action for streetlights within the project footprint, all streetlight electrical facilities identified will continue to be maintained in the Utility Conflict Inventory matrix (Appendix A, Table A).

Any identified overhead lines within the project footprint that pass under the guideway are marked as R&R. Redesign of these utilities may involve mounting to the underside of the guideway, elevation, or accommodation in another way depending on the utility owners' standards and specifications. SL and SCE-UG utilities are marked as PIP unless they specifically conflict with proposed columns and are outlined in the paragraphs below. Additionally, if any underground electrical utility is in close proximity to a proposed guideway column, it is marked PIP/R and will be designated/designed to accommodate the column's chosen foundation dimensions.

There are SL column conflicts at the intersection of Market St and Regent St, at the northeast corner of Market St and Manchester Blvd and along the north and south sides of Manchester Blvd from N Locust St to N Hillcrest Blvd. Along Manchester Blvd from N Hillcrest Blvd to S Prairie Ave, SL lines conflict with nearly all S/W-side and some N/E-side straddle-bent columns. A SL line runs directly through the proposed station on the SW corner of Manchester Blvd and S Prairie Ave. At the intersections of Kelso St, Touchdown, and Arbor Vitae St, with S Prairie Ave, SL lines conflict with at least one proposed column.

There is a project column impacted by SCE-UG conflict at the intersection of N Hillcrest Blvd and Manchester Blvd. There are SCE-UG lines that affect all four proposed columns in the corners of the intersection. Along the west side of S Prairie Ave beginning at Manchester Blvd, an SCE-UG line affects the station and every proposed column until Arbor Vitae St. Along Prairie Ave from Arbor Vitae St to Hardy St, there are SCE-UG lines which either directly impact, or are very close to, almost every proposed column.

There is a SCE-OH line running E-W across the Kelso St-S Prairie Ave intersection which may conflict with the proposed guideway depending on height. There are no other SCE-OH lines within close proximity of proposed stations or guideway.

3.2 Storm Drains

At this time there are no storm drain lines that are identified to have a potential cost impact on the project. Further information has been requested regarding possible storm drain conflicts along Market St.

3.3 Sanitary Sewer

There is an unknown sewer line running N-S across Manchester Blvd between the intersections of Market St and Locust St that is in close proximity to a proposed column. The line connects to a City of Inglewood sewer which runs E-W along Manchester Blvd and is in close proximity to 5 proposed columns. There is a 12" LACSD-5 sewer line which runs N-S along Prairie Ave and is very close proximity to several proposed columns from Manchester Blvd to Kelso St. These three sewer lines are marked as PIP/R and will be further designated/designed depending on the columns' chosen foundation dimensions. South of Arbor Vitae St, along the western sidewalk of Prairie Ave, there is a City of Inglewood 8" sewer line that affects every proposed column until Victory St. This line will need to be relocated to accommodate the future column foundations.

3.4 Water

Along on N Market St and North of E Regent St, there is an unknown water line that conflicts with a proposed column. Between Regent St and Queen St along Market St, there is an unknown water line that conflicts with a proposed column. South of Queen St and along Market St, there are 3 water lines that will create a cost impact as they are all affected by a proposed column. Along Manchester Ave between Market St and Locust St, there is an unknown water line which will have a cost impact as it conflicts with a proposed column. On Manchester Blvd, south of Manchester Dr, there are two water line laterals which conflict with a guideway column. Along Prairie Ave there is an 8" COI water line which conflicts with, or is in very close proximity to, every proposed column from Victory St to Hardy St. Except for the 8" line on Prairie Ave, all water line conflicts appear to be service connections. All water line conflicts have been

designated R&R and will be designed to accommodate future column foundation dimensions in accordance with the respective utility owner design specifications.

3.5 Gas

Along Manchester Ave between Market St and Locust St, there is a 3" gas line running N-S that conflicts with one proposed column. On the southern side of Manchester Ave, just south of Spruce St, there is a 2" gas line which conflicts with one proposed column and is in closer proximity to several others leading east to Prairie Ave. South of Kelso St there is an 8" gas line on the west side of Prairie Ave which affects every proposed column up until Victory St. South of Victory St and west of Prairie Ave, there is a gas line of unknown dimension which affects one proposed column on each straddle bent to the end of the line. All gas lines described here will need to be relocated (R&R) and will require coordination with SoCalGas as the proposed guideway column foundation dimensions are specified.

3.6 Telecommunications

At the northeast corner of Manchester Blvd and Market St, there is an AT&T telecommunications line that conflicts with a proposed column. The duct bank also likely conflicts with the northern column of the next straddle bent to the east. This line is marked R&R will require coordination with AT&T as the column foundation is selected. There is an unknown telecommunications line on the west side of Prairie Ave from La Palma Dr to Buckthorn St that likely conflicts with four columns. Additional research on this duct bank is necessary as it is not clear where it comes from and goes to at the limits depicted in the survey. Assuming that the line is as mapped, it is marked PIP/R and will be further designated when column foundation is selected, and the true proximity is understood. This utility will also need to be further identified so that appropriate coordination with the owner may be executed.

3.7 Utility Conflict Matrix

Refer to Appendices A and B for the utility conflict matrix (Table A) and a full working inventory of all existing utilities within the project footprint (Table B).

Appendix

A. UTILITY CONFLICT MATRIX SHORTLIST

<p align="center">Table A. Inglewood Transit Connector (ITC) Utility Conflict Matrix - Shortlist Updated: 11 August 2021</p>												
<p>Color Legend: RED: Items which were previously mapped but have since been removed BLUE: Utilities with ownership or sizing changes across versions</p>								<p><i>N to S based on track stationing</i></p>		<p>Disposition Legend: Remove (R), Protect in Place (PIP), Support in Place (SIP), Remove & Relocate (R&R), Protect in Place/Replace as Necessary (PIP/R)</p>		
No.	Location ¹	Intersection	Orient.	Direc. ²	Description	Depth ³	Station Limits		Owner	Dispos.	Conflict ⁴	Comments
1	W/N	N LOCUST ST / W FLORENCE ST	E/W	PERP	2" GAS LINE	UNK	00+00	00+00	SCG	R&R	YES	XING STATION CONN. TO CRENSHAW LINE
2	W/S	N LOCUST ST / W FLORENCE ST	E/W	PERP	(2X) ELECTRIC SIGNAL	TBD	00+00	02+00	TBD	R&R	YES	XING N EDGE OF STATION @ MARKET ST
4	N	S MARKET ST / E REGENT ST	E/W	PERP	WATER LINE	4.2	06+50	-	UNK	R&R	YES	
19	S	S MARKET ST / E REGENT ST	E/W	PERP	WATER LINE	TBD	11+00	-	UNK	R&R	YES	
24	S	S MARKET ST / E REGENT ST	E/W	PERP	WATER LINE	TBD	13+20	-	TBD	R&R	YES	
30	S	S MARKET ST / E QUEEN ST	E/W	PERP	2X WATER LATERAL	TBD	14+50	14+55	TBD	R&R	YES	BOTH XING COLUMN
34	AT	S MARKET ST / W MANCHESTER BLVD	E/W-N/S	PARLL/PERP	ELECTRIC SIGNAL LINE	TBD	17+65	19+00	TBD	R&R	YES	CONFLICTS W/ SADDLE-BENT @ NE CORNER OF INT.
35	AT	S MARKET ST / W MANCHESTER BLVD	E/W	PARLL/PERP	UG TELECOM	TBD	18+00	28+00	AT&T	R&R	YES	CONFLICTS W/ SADDLE-BENT @ STA. 18+00, STA. 19+00
36a	AT	S MARKET ST / W MANCHESTER BLVD	E/W	PARLL	ELECTRIC SIGNAL LINE	TBD	18+00	26+88	TBD	R&R	YES	CONFLICTS W/ SADDLE-BENT @ NE CORNER OF INT., RUNS ALONG N EDGE OF MANCHESTER BLVD
49	W	N LOCUST ST / W MAN. BLVD	N/S	PERP	UG TELECOM	UNK	20+12	-	VRZN	R&R	YES	
50	W	N LOCUST ST / W MAN. BLVD	N/S	PERP	UG TELECOM	UNK	20+13	-	CC	R&R	YES	
51	W	N LOCUST ST / W MAN. BLVD	N/S	PERP	UG TELECOM	UNK	20+13	-	SPECT	R&R	YES	
56	W	N LOCUST ST / W MAN. BLVD	N/S	PERP	WATER LATERAL	TBD	20+91	-	UNK/COI	R&R	YES	
70	AT	N LOCUST ST / W MAN. BLVD		PERP	WATER LINE	TBD	25+01	-	COI	R&R	YES	XING INT. FROM N TO S (XING MAIN LINE)
36b	AT	S MARKET ST / W MANCHESTER BLVD	E/W	PARLL	ELECTRIC SIGNAL LINE	TBD	18+00	26+88	TBD	R&R	YES	CONTD, CONFLICTS WITH SADDLE BENT @ N EDGE OF W MAN. BLVD ~ STA. 25+00
71	AT	N HILLCREST BLVD / W MANCHESTER BLVD	N/S-E/W	PARLL/PERP	ELECTRIC LINE	TBD	26+33	27+87	SCE	R&R	YES	ALL 4 SIDES OF INT., CONFLICT @ NW CORNER SADDLE BENT
75	E	N HILLCREST BLVD / W MANCHESTER BLVD	N/S	PARLL	ELECTRIC SIGNAL LINE	TBD	27+87	32+00	TBD	R&R	YES	CONFLICTS W/ 4 COLUMNS ALONG S/W EDGE OF W MAN. BLVD
76	E	N HILLCREST BLVD / W MANCHESTER BLVD	N/S-E/W	PARLL/PERP	ELECTRIC SIGNAL LINE	TBD	27+90	29+00	TBD	R&R	YES	CONFLICTS WITH SADDLE BENT @ N EDGE OF W MAN. BLVD, CONT. ALONG MANCHESTER TERRACE
80	E	MANCHESTER TERRACE / W MANCHESTER BLVD	N/S	PARLL	ELECTRIC SIGNAL LINE	TBD	29+02	33+20	TBD	R&R	YES	XING. COLUMN @ NW CORNER OF MAN. DRIVE / W MAN. BLVD INT.
89	E	E SPRUVE AVE / W MAN. BLVD	N/S	PARLL	ELECTRIC SIGNAL LINE	TBD	32+80	36+78	TBD	R&R	YES	INT. 2 COLUMNS ALONG S EDGE OF W MAN. BLVD
90	E	E SPRUVE AVE / W MAN. BLVD	E/W	PERP	2X WATER LATERAL	TBD	33+00	33+27	TBD	R&R	YES	1ST INT. COLUMN ALONG S EDGE OF W MAN. BLVD
92	AT/E	MANCHESTER DR / W MAN. BLVD	N/S-E/W	PARLL/PERP	2" GAS LINE	UNK	33+46	42+42	UNK	R&R	YES	RUNS E ALONG MAN. DR., XING INT & CONT. ALONG SW EDGE OF W MAN. BLVD (CONFLICTS 6 COLUMNS). PREV. MARKED AS SCG
97	E	MANCHESTER DR / W MAN. BLVD	E/W	PERP	2X WATER LATERALS	TBD	35+81	35+88	TBD	R&R	YES	
99	W	E TAMARACK AVE / W MAN. BLVD	N/S	PARLL	ELECTRIC SIGNAL LINE	TBD	36+68	39+50	TBD	R&R	YES	CONFLICTS 3 COLUMNS ALONG NE EDGE OF MAN. BLVD
102	E	E TAMARACK AVE / W MAN. BLVD	E/W	PARLL	ELECTRIC SIGNAL LINE	TBD	37+51	39+55	TBD	R&R	YES	CONFLICTS ALL 3 COLUMNS ALONG S-C/L OF W MAN. BLVD
108	E	S OSAGE / W MACHESTER BLVD	E/W	PARLL	ELECTRIC SIGNAL LINE	TBD	40+41	44+00	TBD	R&R	YES	CONFLICTS ALL 2 COLUMNS ALONG S EDGE OF W MAN. BLVD
109	E	S OSAGE / W MACHESTER BLVD	N/S	PERP	WATER LATERAL	TBD	41+63	-	TBD	R&R	YES	

No.	Location ¹	Intersection	Orient.	Direc. ²	Description	Depth ³	Station Limits	Owner	Dispos.	Conflict ⁴	Comments
TO ACCOMMODATE LONG N/S UTILITY RUNS, SOUTH OF W MANCHESTER BLVD / S PRAIRIE AVE INTERSECTION, UTILITIES ARE LISTED IN ORDER OF CONFLICT FROM NORTH TO SOUTH AND EAST TO WEST DESPITE TRUE UTILITY RUN STATIONING.											
111	AT	S PRAIRIE AVE	N/S	PARLL/PE	ELECTRIC SIGNAL LINI	TBD	44+00 72+75	TBD	R&R	YES	ALONG W EDGE OF S PRAIRIE AVE. CONFLICTS W/ STATION FROM STA. 45 TO 47+75
112	AT	S PRAIRIE AVE	E/W	PERP	GAS LATERAL	TBD	45+25 -	SCG	R&R	YES	CONFLICTS STATION STAIRWELL @ STA. 45+25
123	W/AT	S PRAIRIE AVE	N/S	PARLL	24" TRUNK SEWER	TBD	44+00 54+50	LACSD-5	R&R	YES	RUNS ALONG S PRAIRIE AVE
127	AT	E NUTWOOD ST / S PRAIRIE AVE	N/S	PARLL/PERP	UG ELECTRIC LINE	TBD	47+15 74+10	SCE	R&R	YES	CONFLICTS W/ STATION FROM STA. 47+15-76, CONFLICTS W/ 19/27 COLUMNS ALONG W EDGE OF S PRAIRIE AVE
133	S	E NUTWOOD ST / S PRAIRIE AVE	E/W	PERP	UG ELECTRIC LINE	TBD	51+31	SCE	R&R	YES	XING E-SIDE COLUMN
137	AT	PINCAY DR / S PRAIRIE AVE	N/S-E/W	PARLL/PERP	ELECTRIC SIGNAL LINI	TBD	54+00 55+13	TBD	R&R	YES	ALL 4 SIDES OF INT. CONFLICTS W/ SW COLUMN
145	AT	PINCAY DR / S PRAIRIE AVE	N/S-E/W	PERP	OH ELECTRIC LINE	TBD	54+87 -	SCE	R&R	YES	
146	W	PINCAY DR / S PRAIRIE AVE		PARLL	GAS LINE	TBD	55+00 74+00	SCG	R&R	YES	
157	AT	E BUCKTHORN ST / S PRAIRIE AVE	N/S-EW	PARLL/PERP	ELECTRICA SIGNAL LII	TBD	63+52 64+58	TBD	R&R	YES	CONFLICTS 2 COLUMNS (NW & SW OF INT)
160	AT	E BUCKTHORN ST / S PRAIRIE AVE	N/S	PARLL	X" GAS LINE	TBD	64+00 81+72	SCG	R&R	YES	CONFLICTS WITH ALL 8 COLUMNS FROM STA. 75 TO 81+50 PREV. MARKED 8" SCG
161	S	E BUCKTHORN ST / S PRAIRIE AVE	N/S	PARLL	2" GAS LINE	UNK	64+60 68+17	SCG	R&R	YES	
168	AT	ARBOR VITAE ST / S PRAIRIE AVE	N/S-E/W	PARLL/PERP	ELECTRIC SIGNAL LINI	TBD	68+ 70+00	TBD	R&R	YES	CONFLICTS 2 COLUMNS (NW, SW CORNERS OF INT)
181	S	ARBOR VITAE ST / S PRAIRIE AVE	N/S	PARLL	8" WATER LINE	UNK	70+00 82++	COI	R&R	YES	CONFLICTS W/ 7 COLUMNS FROM STA. 74+50 TO 82+00
182	S	ARBOR VITAE ST / S PRAIRIE AVE	N/S	PARLL	8" SEWER LINE	UNK	70+50 82++	COI	R&R	YES	CONFLICTS W/ 5 COLUMNS DOWN S PRAIRIE AVE UNTIL STA. 75+00
183	S	ARBOR VITAE ST / S PRAIRIE AVE	N/S	DIAG	ELECTRIC LINE	TBD	72+47 73+30	TBD	R&R	YES	BRANCH OFF FROM MAIN DOWN C/L
190	S	E VICTORY ST / S PRAIRIE AVE	E/W	PERP	WATER LATERAL	TBD	78+72 -	TBD	R&R	YES	PREV. MARKED WBM
191	S	E VICTORY ST / S PRAIRIE AVE	E/W	PERP	3X WATER LATERALS	TBD	79+50 79+53	TBD	R&R	YES	
192	W	S PRAIRIE AVE / E HARDY ST	N/S	PARLL	4" GAS LINE	TBD	80+80 81+72	SCG	R&R	YES	OVERLAPS XIN GAS LINE
195	N	E HARDY ST / S PRAIRIE AVE	E/W	PERP	2X UG ELECTRIC LINE	TBD	82+00 82++	SCE	R&R	YES	CONFLICTS WITH LAST COLUMN @ NW CORNER OF INT.
196	N	E HARDY ST / S PRAIRIE AVE	E/W	PERP	ELECTRIC SIGNAL LINI	TBD	82+00 -	TBD	R&R	YES	
THESE NEED ADDITIONAL REVIEW- MAY BE MISSING FROM THE MODEL. DIFFICULT TO COMPARE DUE TO CHANGING INFORMATION											
198	E	S PRAIRIE AVE / E HARDY ST		PARLL	39" STORM DRAIN			LACSD-5			RUNS ALONG S PRAIRIE ST
¹ Conflicts marked as N/S/E/W/AT, indicating conflict is either "North of", "South of", "East of", "West of", or "At" the intersection listed in the next cell. ² Utility orientation with respect to the track guideway or station. ³ Depth in feet. "UNK" indicates utilities which have BaseMap callouts but no specified depth. "TBD" indicates utilities with no call out (via MarkThomas Survey). ⁴ Conflicts marked "YES" indicate utilities which impact columns. Utilities marked "NO" are located under the guideway. "MYB" indicates utilities which are in close proximity and may be in conflict with columns or stations.											

B. UTILITY CONFLICT INVENTORY

Table B. Inglewood Transit Connector (ITC)
Utility Conflict Inventory Matrix
 Updated: 11 August 2021

Color Legend: RED: Items which were previously mapped but have since been removed BLUE: Utilities with ownership or sizing changes across versions												N to S based on track stationing	Disposition Legend: Remove (R), Protect in Place (PIP), Support in Place (SIP), Remove & Relocate (R&R), Protect in Place/Replace as Necessary (PIP/R)	
No.	Location ¹	Intersection	Orient.	Dirac. ²	Description	Depth ³	Station Limits		Owner	Dispos.	Conflict ⁴	Comments		
1	W/N	N LOCUST ST / W FLORENCE ST	E/W	PERP	2" GAS LINE	UNK	00+00	00+00	SCG	R&R	YES	XING STATION CONN. TO CRENSHAW LINE		
2	W/S	N LOCUST ST / W FLORENCE ST	E/W	PERP	(2X) ELECTRIC SIGNAL	TBD	00+00	02+00	TBD	R&R	YES	XING N EDGE OF STATION @ MARKET ST		
3	N	S MARKET ST / E REGENT ST	E/W	PERP	WATER LINE	2.5	06+00	-	UNK	PIP	NO			
4	N	S MARKET ST / E REGENT ST	E/W	PERP	WATER LINE	4.2	06+50	-	UNK	R&R	YES			
5	AT	S MARKET ST	N/S	PARLL	WATER MAIN LINE	UNK	03+00	19+00	UNK	PIP	NO	CROSSES FROM NW TO SE @ MARKET/REGENT, CROSSES FROM E TO W/CL @ QUEEN		
6	N	E FLORENCE AVE / LA BREA AVE		PARLL	STORM LINE	TBD	8+15	-	COI	PIP	NO	N OF STREET C/L		
7	AT	S MARKET ST / E REGENT ST	N/S-E/W	PERP	ELECTRIC SIGNAL LINE	UNK	08+10	09+00	TBD	TBD	MYB	ALL SIDES OF INT., VERY CLOSE TO COLUMN AT STA. 09+00		
8	AT	S MARKET ST / E REGENT ST	E/W	PERP	ELECTRIC LINE	UNK	08+05	-	SCE	PIP	NO			
9	AT	S MARKET ST / E REGENT ST	E/W	PERP	2X WATER LINE	UNK	08+20	08+25	UNK	PIP	NO			
10	AT	S MARKET ST / E REGENT ST		PERP	STORM LINE	TBD	08+20	-	COI	PIP	NO	RUNS ALONG E REGENT ST		
11	E	S MARKET ST / E REGENT ST	E/W	PARLL	4" GAS LINE	UNK	08+40	-	SCG	PIP	NO			
12	AT	S MARKET ST / E REGENT ST	E/W	PERP	ELECTRIC LINE	3	08+60	-	SCE	PIP	NO			
13	AT	S MARKET ST / E REGENT ST	E/W	PERP	UG CONDUIT	UNK	08+75	-	AT&T	PIP	NO			
14	AT	S MARKET ST / E REGENT ST	E/W	PERP	UG CONDUIT	UNK	08+75	-	SPECT, CC, VRZN	PIP	NO	ALL 3X IN ONE CONDUIT		
15	S	S MARKET ST / E REGENT ST	N/S	PARLL	2X ELECTRIC LINE	TBD	09+00	18+00	SCE	PIP	NO	RUNS ALONG BOTH SIDES OF S MARKET ST		
16	S	S MARKET ST / E REGENT ST	E/W	PERP	8X WATER LATERAL	TBD	09+10	13+25	TBD	PIP	NO			
17	S	S MARKET ST / E REGENT ST	E/W	PERP	WATER LINE	TBD	09+45	-	TBD	PIP	NO			
18	S	S MARKET ST / E REGENT ST	E/W	PERP	WATER LINE	TBD	09+55	-	UNK	PIP	NO			
19	S	S MARKET ST / E REGENT ST	E/W	PERP	WATER LINE	TBD	11+00	-	UNK	R&R	YES			
20	S	S MARKET ST / E REGENT ST	E/W	PERP	5X WATER LATERAL	TBD	11+00	12+00	UNK	PIP	NO			
21	S	S MARKET ST / E REGENT ST	E/W	PERP	WATER LINE	1.7	11+40	-	UNK	PIP	NO			
22	S	S MARKET ST / E REGENT ST	E/W	PERP	WATER LINE	TBD	11+80	-	UNK	PIP	NO			
23	S	S MARKET ST / E REGENT ST	E/W	PERP	WATER LINE	2.2	12+15	-	UNK	PIP	NO			
24	S	S MARKET ST / E REGENT ST	E/W	PERP	WATER LINE	TBD	13+20	-	TBD	R&R	YES			
25	AT	S MARKET ST / E REGENT ST	E/W-N/S	PARLL/PE	ELECTRIC SIGNAL LINE	TBD	13+30	14+25	TBD	PIP	NO	ALL SIDES OF INT.		
26	AT	S MARKET ST / E QUEEN ST	E/W	PERP	UG TELECOM	TBD	13+80	-	SPECT	PIP	NO	RUNS ALONG E REGENT ST		
27	AT	S MARKET ST / E QUEEN ST	E/W	PERP	UG CONDUIT	TBD	13+81	-	VRZN	PIP	NO			
28	AT	S MARKET ST / E QUEEN ST	E/W	PERP	STORM DRAIN LINE	TBD	14+00	-	COI	PIP	NO	RUNS ALONG E REGENT ST		
29	S	S MARKET ST / E QUEEN ST	E/W	PERP	2X WATER LATERAL	TBD	14+30	14+40	TBD	PIP	NO			
30	S	S MARKET ST / E QUEEN ST	E/W	PERP	2X WATER LATERAL	TBD	14+50	14+55	TBD	R&R	YES	BOTH XING COLUMN		
31	S	S MARKET ST / E QUEEN ST	E/W	PERP	2X WATER LATERAL	TBD	14+60	15+20	TBD	PIP	NO			

¹ Conflicts marked as N/S/E/W/AT, indicating conflict is either "North of", "South of", "East of", "West of", or "At" the intersection listed in the next cell.

² Utility orientation with respect to the track guideway or station.

³ Depth in feet. "UNK" indicates utilities which have BaseMap callouts but no specified depth. "TBD" indicates utilities with no call out (via MarkThomas Survey).

⁴ Conflicts marked 'YES' indicate utilities which impact columns. Utilities marked "NO" are located under the guideway. "MYB" indicates utilities which are in close proximity and may be in conflict with columns or stations.

No.	Location ¹	Intersection	Orient.	Direc. ²	Description	Depth ³	Station Limits	Owner	Dispos.	Conflict ⁴	Comments
32	S	S MARKET ST / E QUEEN ST	E/W	PERP	7X WATER LATERAL	TBD	14+90 17+20	UNK	PIP	NO	
33	N	S MARKET ST / E QUEEN ST	E/W	PERP	WATER LATERAL	TBD	17+45 -	TBD	PIP	NO	
34	AT	S MARKET ST / W MANCHESTER BLVD	E/W-N/S	PARLL/PERP	ELECTRIC SIGNAL LINE	TBD	17+65 19+00	TBD	R&R	YES	CONFLICTS W/ SADDLE-BENT @ NE CORNER OF INT.
35	AT	S MARKET ST / W MANCHESTER BLVD	E/W	PARLL/PERP	UG TELECOM	TBD	18+00 28+00	AT&T	R&R	YES	CONFLICTS W/ SADDLE-BENT @ STA. 18+00, STA. 19+00
36a	AT	S MARKET ST / W MANCHESTER BLVD	E/W	PARLL	ELECTRIC SIGNAL LINE	TBD	18+00 26+88	TBD	R&R	YES	CONFLICTS W/ SADDLE-BENT @ NE CORNER OF INT., RUNS ALONG N EDGE OF MANCHESTER BLVD
37a	AT	S MARKET ST / W MANCHESTER BLVD	E/W	PARLL	ELECTRIC SIGNAL LINE	TBD	18+00 22+00	TBD	PIP	NO	
38	AT	S MARKET ST / W MANCHESTER BLVD	E/W	PARLL/PE	12" WATER MAIN LINE	TBD	18+00 29+50	COI	PIP	NO	ALONG S EDGE OF MANCHESTER BLVD, XING UNK N/W MAIN @ INT.
39	N	W MANCHESTER BLVD	E/W	PERP	STORM LINE	TBD	18+00 19+00	COI	PIP	NO	CROSSES S MARKET ST
40	AT	W MANCHESTER BLVD	N/S	PERP	7X WATER LATERAL	TBD	18+00 20+45	COI	PIP	NO	CONN. TO 12" MAIN ON MANCHESTER BLVD
41	N	W MANCHESTER BLVD	E/W	PARLL	STORM LINE	TBD	19+00 22+90	COI	PIP	NO	
42	AT	W MANCHESTER BLVD		PARLL	WATER LINE	TBD	19+00 44+00	WBM	PIP	NO	ALONG S EDGE OF ROADWAY
43	S	W MANCHESTER BLVD	E/W	PARLL	2" GAS LINE	TBD	19+20 20+10	SCG	PIP	NO	RUNS ALONG W MANCHESTER BLVD
44	E	S MARKET ST / W MANCHESTER BLVD	N/S	PERP	UG ELECTRIC LINE	TBD	19+97 20+12	SCE	PIP	NO	XING MANCHESTER BLVD FROM N TO S
45	W	N LOCUST ST / W MAN. BLVD	N/S	PERP	SEWER LINE	UNK	20+06 -	TBD	PIP/R	MYB	
46	W	N LOCUST ST / W MAN. BLVD	E/W	PARLL	SEWER LINE	UNK	20+06 27+54	COI	PIP/R	MYB	RUNS ALONG W MANCHESTER BLVD
47	W	N LOCUST ST / W MAN. BLVD	N/S	PERP	2-3" GAS LINE	UNK	20+10 -	SCG	PIP/R	MYB	2" N OF INT. 3" THROUGH INT.
48	AT	N LOCUST ST / W MAN. BLVD	E/W	PARLL	2" GAS LINE	UNK	20+10 21+15	SCG	PIP	NO	
49	W	N LOCUST ST / W MAN. BLVD	N/S	PERP	UG TELECOM	UNK	20+12 -	VRZN	R&R	YES	
50	W	N LOCUST ST / W MAN. BLVD	N/S	PERP	UG TELECOM	UNK	20+13 -	CC	R&R	YES	
51	W	N LOCUST ST / W MAN. BLVD	N/S	PERP	UG TELECOM	UNK	20+13 -	SPECT	R&R	YES	
52	AT	W MANCHESTER BLVD	E/W	PARLL	ELECTRIC LINE	TBD	20+14 22+64	SCE	PIP	NO	RUNS ALONG N EDGE OF W MANCHESTER BLVD
53	AT	W MANCHESTER BLVD	E/W-N/S	PARLL	ELECTRIC SIGNAL LINE	UNK	20+20 20+48	TBD	PIP	NO	RECT ALONG N EDGE OF W MANCHESTER BLVD
54	W	N LOCUST ST / W MAN. BLVD	N/S	PERP	WATER LATERAL	TBD	20+38 -	UNK/COI	PIP	NO	
55	W	N LOCUST ST / W MAN. BLVD	N/S	PERP	WATER LATERAL	TBD	20+45 -	UNK/COI	PIP	NO	
56	W	N LOCUST ST / W MAN. BLVD	N/S	PERP	WATER LATERAL	TBD	20+91 -	UNK/COI	R&R	YES	
57	W	N LOCUST ST / W MAN. BLVD	N/S	PERP	WATER LATERAL	TBD	21+27 -	UNK/COI	PIP	NO	
58	AT	N LOCUST ST / W MAN. BLVD	N/S	PERP	WATER LATERAL	TBD	21+58 -	UNK/COI	PIP	NO	
59	AT	N LOCUST ST / W MAN. BLVD	N/S-E/W	PARLL/PE	ELECTRIC SIGNAL LINE	TBD	22+13 22+78	TBD	PIP	NO	ALL 4 SIDES OF INT.
60	E	N LOCUST ST / W MAN. BLVD	E/W	PARLL	ELECTRIC SIGNAL LINE	TBD	22+78 26+32	TBD	PIP	NO	CONNECTS TO INT. ELEC-SL, ALONG S EDGE OF W MANCHESTER BLVD
61	AT	N LOCUST ST / W MAN. BLVD	N/S	PERP	WATER LINE	TBD	22+50 22+59	UNK/COI	PIP	NO	BENDS TO JOIN 6" COI LINE
62	AT	N LOCUST ST / W MAN. BLVD	N/S	PERP	6" WATER LINE	UNK	22+59 -	COI	PIP	NO	MEETS BENT LINE
63	AT	N LOCUST ST / W MAN. BLVD	N/S	PERP	2" GAS LINE	UNK	22+63 -	SCG	PIP	NO	ALONG N LOCUST ST
64	AT	N LOCUST ST / W MAN. BLVD	E/W	PARLL	2" GAS LINE	UNK	22+63 24+60	SCG	PIP	NO	ALONG S EDGE OF W MANCHESTER BLVD
65	AT	N LOCUST ST / W MAN. BLVD	N/S	PERP	ELECTRIC LINE	UNK	22+65 -	SCE	PIP	NO	MEETS INT. SIGNAL LIGHTS, RUNS N/S ALONG LOCUST ST TO FLORENCE
66	E	N LOCUST ST / W MAN. BLVD	E/W-N/S	PARLL	ELECTRIC SIGNAL LINE	TBD	22+84 -	TBD	PIP	NO	RECT ALONG N EDGE OF W MANCHESTER BLVD
67	E	N LOCUST ST / W MAN. BLVD	N/S	PERP	4X WATER LATERALS	TBD	23+90 24+62	UNK	PIP	NO	
68	E	N LOCUST ST / W MAN. BLVD	E/W-N/S	PARLL	ELECTRIC SIGNAL LINE	TBD	24+50 24+85	TBD	PIP	NO	RECT ALONG N EDGE OF W MANCHESTER BLVD

No.	Location ¹	Intersection	Orient.	Direc. ²	Description	Depth ³	Station Limits		Owner	Dispos.	Conflict ⁴	Comments
69	W	N LOCUST ST / W MAN. BLVD		PERP	WATER LINE	TBD	24+50	-	COI	PIP	NO	XING ROADWAY FROM N TO S SIDE (XING MAIN LINE)
70	AT	N LOCUST ST / W MAN. BLVD		PERP	WATER LINE	TBD	25+01	-	COI	R&R	YES	XING INT. FROM N TO S (XING MAIN LINE)
36b	AT	S MARKET ST / W MANCHESTER BLVD	E/W	PARLL	ELECTRIC SIGNAL LINE	TBD	18+00	26+88	TBD	R&R	YES	CONTD, CONFLICTS WITH SADDLE BENT @ N EDGE OF W MAN. BLVD ~ STA. 25+00
37b	AT	N HILLCREST BLVD / W MANCHESTER BLVD	E/W	PARLL	ELECTRIC SIGNAL LINE	TBD	22+78	26+32	TBD	PIP/R	MYB	CONTD, ALONG S EDGE OF W MANCHESTER BLVD
71	AT	N HILLCREST BLVD / W MANCHESTER BLVD	N/S-E/W	PARLL/PERP	ELECTRIC LINE	TBD	26+33	27+87	SCE	R&R	YES	ALL 4 SIDES OF INT., CONFLICT @ NW CORNER SADDLE BENT
72	S	EAST HILLCREST / WEST MANCHESTER BLVD		PERP	GAS LINE	TBD	27+50	28+25	SCG	PIP	NO	CROSSES W MAN. BLVD ALONG E HILLCREST
73	AT	N HILLCREST BLVD / W MANCHESTER BLVD	N/S	PERP	SEWER LINE	TBD	27+55	-	COI	PIP	NO	CONN. TO E/W SS LINE
74	AT	N HILLCREST BLVD / W MANCHESTER BLVD	N/S	PARLL	6" WATER LINE	TBD	27+60	36+60	COI	PIP	NO	CONT. ALONG S EDGE OF W MAN. BLVD
75	E	N HILLCREST BLVD / W MANCHESTER BLVD	N/S	PARLL	ELECTRIC SIGNAL LINE	TBD	27+87	32+00	TBD	R&R	YES	CONFLICTS W/ 4 COLUMNS ALONG S/W EDGE OF W MAN. BLVD
76	E	N HILLCREST BLVD / W MANCHESTER BLVD	N/S-E/W	PARLL/PERP	ELECTRIC SIGNAL LINE	TBD	27+90	29+00	TBD	R&R	YES	CONFLICTS WITH SADDLE BENT @ N EDGE OF W MAN. BLVD, CONT. ALONG MANCHESTER TERRACE
77	E	N HILLCREST BLVD / W MANCHESTER BLVD	N/S	PERP	WATER LATERAL	TBD	28+05	-	UNK	PIP	NO	
78	AT	MANCHESTER TERRACE / W MANCHESTER BLVD	N/S-E/W	PERP	WATER LINE	TBD	28+85	-	LADWP	PIP	NO	NE EDGE TO MAIN LINE (PART. ALONG MAN. TERRACE)
79	E	MANCHESTER TERRACE / W MANCHESTER BLVD	N/S	PARLL	8" SEWER LINE	12	28+95	33+06	COI	PIP	NO	PREV. MARKED LACSD-5
80	E	MANCHESTER TERRACE / W MANCHESTER BLVD	N/S	PARLL	ELECTRIC SIGNAL LINE	TBD	29+02	33+20	TBD	R&R	YES	XING. COLUMN @ NW CORNER OF MAN. DRIVE / W MAN. BLVD INT.
81	E	MANCHESTER TERRACE / W MANCHESTER BLVD	E/W	PERP	2X WATER LATERAL	TBD	29+50	30+60	UNK	PIP	NO	PREV. MARKED LADWP
82	S	N HILLCREST BLVD / W MANCHESTER BLVD	N/S	PERP	12" WATER LINE	TBD	29+50	36+70	COI	PIP	NO	
83	NW	E SPRUVE AVE / W MAN. BLVD	E/W	PERP	ELECTRIC LINE	TBD	31+97	32+00	SCE	PIP/R	MYB	XING INT ON NW SIDE
84	AT	E SPRUVE AVE / W MAN. BLVD	N/S	PARLL	ELECTRIC LINE	TBD	32+00	32+52	TBD	PIP/R	MYB	XING INT ON SW SIDE
85	W	E SPRUVE AVE / W MAN. BLVD	-	PERP	WATER LINE	TBD	32+10	-	UNK	PIP	NO	SW EDGE TO MAIN LINE
86	AT	E SPRUVE AVE / W MAN. BLVD	E/W	PERP	2" WATER LINE	TBD	32+19	-	COI	PIP	NO	CONN. TO 6" COI N/S LINE
87	AT	E SPRUVE AVE / W MANCHESTER BLVD	N/S-E/W	PERP	10" STORM DRAIN	TBD	32+43	-	LACFCD	PIP	NO	PREV. MARKED AS CONCRETE GUTTER SD. RUNS ALONG E SPRUVE AVE, CROSSES W MAN. BLVD & CONT. N TO MAN. TERRACE
88	AT	E SPRUVE AVE / W MANCHESTER BLVD	N/S-E/W	PERP	8" SEWER LINE	12?	32+50	34++	LACSD-5	PIP	NO	ALONG E SPRUVE AVE, CROSSES W MAN. BLVD & CONT. N TO MAN. TERRACE & E ALONG MAN. DR. PREV. MARKED AS PARTIALLY ABND.
89	E	E SPRUVE AVE / W MAN. BLVD	N/S	PARLL	ELECTRIC SIGNAL LINE	TBD	32+80	36+78	TBD	R&R	YES	INT. 2 COLUMNS ALONG S EDGE OF W MAN. BLVD
90	E	E SPRUVE AVE / W MAN. BLVD	E/W	PERP	2X WATER LATERAL	TBD	33+00	33+27	TBD	R&R	YES	1ST INT. COLUMN ALONG S EDGE OF W MAN. BLVD
91	E	E SPRUVE AVE / W MAN. BLVD	E/W	PERP	WATER LINE	TBD	33+08	-	UNK	PIP	NO	NE EDGE TO MAIN LINE
92	AT/E	MANCHESTER DR / W MAN. BLVD	N/S-E/W	PARLL/PERP	2" GAS LINE	UNK	33+46	42+42	UNK	R&R	YES	RUNS E ALONG MAN. DR., XING INT & CONT. ALONG SW EDGE OF W MAN. BLVD (CONFLICTS 6 COLUMNS). PREV. MARKED AS SCG
93	E	MANCHESTER DR / W MAN. BLVD	N/S	PARLL	ELECTRIC SIGNAL LINE	TBD	34+30	36+44	TBD	PIP	NO	ALONG NE EDGE OF MAN. BLVD
94	E	MANCHESTER DR / W MAN. BLVD	E/W	PERP	WATER LINE	TBD	34+34	-	UNK	PIP	NO	NE EDGE TO MAIN LINE (PARTIALLY ALONG S EDGE OF MAN. DR)
95	E	MANCHESTER DR / W MAN. BLVD	N/S	PARLL	WATER LINE	TBD	34+34	37+40	UNK	PIP	NO	ALONG S-C/L OF MAN. BLVD

No.	Location ¹	Intersection	Orient.	Direc. ²	Description	Depth ³	Station Limits	Owner	Dispos.	Conflict ⁴	Comments
96	E	MANCHESTER DR / W MAN. BLVD	E/W	PERP	5X WATER LATERALS	TBD	35+08 36+32	UNK	PIP	NO	
97	E	MANCHESTER DR / W MAN. BLVD	E/W	PERP	2X WATER LATERALS	TBD	35+81 35+88	TBD	R&R	YES	
98	W	E TAMARACK AVE / W MAN. BLVD	N/S	PARLL	ELECTRIC LINE	TBD	36+44 36+68	TBD	PIP	NO	ALONG NE EDGE OF MAN. BLVD
99	W	E TAMARACK AVE / W MAN. BLVD	N/S	PARLL	ELECTRIC SIGNAL LINE	TBD	36+68 39+50	TBD	R&R	YES	CONFLICTS 3 COLUMNS ALONG NE EDGE OF MAN. BLVD
100	E	E TAMARACK AVE / W MAN. BLVD	-	PARLL	8" SEWER LINE	TBD	37+00 44+00	LACSD-5	R	NO	BEGINS ON E TAMARACK AND TURNS TO RUN ALONG W MANCHESTER BLVD
101	E	E TAMARACK AVE / W MAN. BLVD	E/W	PERP	2X WATER LATERAL	TBD	37+48 37+56	UNK	PIP/R	MYB	
102	E	E TAMARACK AVE / W MAN. BLVD	E/W	PARLL	ELECTRIC SIGNAL LINE	TBD	37+51 39+55	TBD	R&R	YES	CONFLICTS ALL 3 COLUMNS ALONG S-C/L OF W MAN. BLVD
103	E	E TAMARACK AVE / W MAN. BLVD	E/W	PARLL	WATER LINE	TBD	37+77 44+00	UNK	PIP	NO	RUNS ALONG S-C/L OF W MAN. BLVD
104	E	E TAMARACK AVE / W MAN. BLVD	N/S	PERP	7X WATER LATERAL	TBD	38+11 39+65	TBD	PIP	NO	
105	W	S OSAGE / W MACHESTER BLVD	E/W	PARLL	2" GAS LINE	UNK	38+27 41+75	UNK	PIP/R	MYB	ALONG N EDGE OF W MAN. BLVD, CLOSE TO 2 COLUMNS
106	E	S OSAGE / W MACHESTER BLVD	E/W	PARLL	ELECTRIC SIGNAL LINE	TBD	40+27 43+75	TBD	PIP	NO	
107	E	S OSAGE / W MACHESTER BLVD	N/S	PERP	4X WATER LATERALS	TBD	40+41 41+30	TBD	PIP/R	MYB	POSSIBLE CONFLICT W/ COLUMN @ SE EDGE OF INT.
108	E	S OSAGE / W MACHESTER BLVD	E/W	PARLL	ELECTRIC SIGNAL LINE	TBD	40+41 44+00	TBD	R&R	YES	CONFLICTS ALL 2 COLUMNS ALONG S EDGE OF W MAN. BLVD
109	E	S OSAGE / W MACHESTER BLVD	N/S	PERP	WATER LATERAL	TBD	41+63 -	TBD	R&R	YES	
110	E	S OSAGE / W MACHESTER BLVD	N/S	PERP	3X WATER LATERALS	TBD	42+08 43+40	TBD	PIP	NO	
TO ACCOMMODATE LONG N/S UTILITY RUNS, SOUTH OF W MANCHESTER BLVD / S PRAIRIE AVE INTERSECTION, UTILITES ARE LISTED IN ORDER OF CONFLICT FROM NORTH TO SOUTH AND EAST TO WEST DESPITE TRUE UTILITY RUN STATIONING.											
111	AT	S PRAIRIE AVE	N/S	PARLL/PE	ELECTRIC SIGNAL LINE	TBD	44+00 72+75	TBD	R&R	YES	ALONG W EDGE OF S PRAIRIE AVE. CONFLICTS W/ STATION FROM STA. 45 TO 47+75
112	AT	S PRAIRIE AVE	E/W	PERP	GAS LATERAL	TBD	45+25 -	SCG	R&R	YES	CONFLICTS STATION STAIRWELL @ STA. 45+25
113	AT	S PRAIRIE AVE	N/S	PERP	UG ELECTRIC LINE	TBD	++44+00 47+68	SCE	PIP/R	MYB	CONFLICTS STATION FROM STA 45+51-67 & 46+80 TO 47+68
114	AT	S PRAIRIE AVE	N/S	PARLL/PE	12" SEWER LINE	2.5	++44+00 54+48	LACSD-5	PIP/R	MYB	CONFLICTS STATION FROM STA 45+51-67 & 47+00 TO 47+77
115	AT	S PRAIRIE AVE	N/S	PARLL/PERP	8" GAS LINE	2.7	++44+00 82++	SCG	PIP/R	MYB	CONFLICTS STATION FROM STA 45+51-67 & 47+00 TO 47+77, CONFLICTS ALL 18 COLUMNS FROM STA 58 TO 74
116	AT	S PRAIRIE AVE	N/S	PARLL	WATER LINE	TBD	++44+00 69+90	TBD	PIP/R	MYB	
117	AT	S PRAIRIE AVE	N/S	PARLL/PE	UG ELECTRIC LINE	UNK	++44+00 82++	SCE	PIP/R	MYB	
118	AT	S PRAIRIE AVE	N/S	PARLL	36" WATER LINE	2.5	44+00 82++	WBM	PIP/R	MYB	
119	AT	S PRAIRIE AVE	N/S	PARLL	36" WATER LINE	2.5	44+00 82++	WBM	PIP/R	MYB	XING ROADWAY TO E EDGE ~STA. 81+75
120	AT	S PRARIE AVE	N/S	PARLL	60" RCP WATER LINE	3	44+00 82+00	LADWP	PIP/R	MYB	
121	N	EAST OF SOUTH PRAIRIE AVE / ALONG WEST MANCHESTER BLVD		PARLL	10" SEWER LINE	UNK	44+00 54+50	LACSD-5	PIP/R	MYB	
122	N	E NUTWOOD ST / S PRAIRIE AVE	E/W	PERP	WATER LATERAL	TBD	46+80 -	TBD	PIP/R	MYB	
123	W/AT	S PRAIRIE AVE	N/S	PARLL	24" TRUNK SEWER	TBD	44+00 54+50	LACSD-5	R&R	YES	RUNS ALONG S PRAIRIE AVE
124	AT	S PRARIE AVE	N/S	PARLL/PE	ELECTRIC SIGNAL LINE	TBD	44+15 73+00	TBD	PIP/R	MYB	
125	AT	SOUTH PRAIRIE AVE	E/W	PERP	5' RCP SD	TBD	46+00 -	COI	PIP	NO	CROSSES S PRAIRIE AVE
126	S	S PRARIE AVE / W MANCHESTER BLVD	E/W	PERP	WATER LINE	TBD	46+50 -	West Basin	PIP	NO	W EDGE TO WESTERN MOST WATER MAIN LINE
127	AT	E NUTWOOD ST / S PRAIRIE AVE	N/S	PARLL/PERP	UG ELECTRIC LINE	TBD	47+15 74+10	SCE	R&R	YES	CONFLICTS W/ STATION FROM STA. 47+15-76, CONFLICTS W/ 19/27 COLUMNS ALONG W EDGE OF S PRAIRIE AVE
128	AT	E NUTWOOD ST / S PRAIRIE AVE	E/W	PERP	6" WATER LINE	UNK	47+67 -	COI	PIP/R	MYB	PARLL ALONG N EDGE OF NUTWOOD, JOINS WESTERN WATER MAIN LINE ON PRARIE

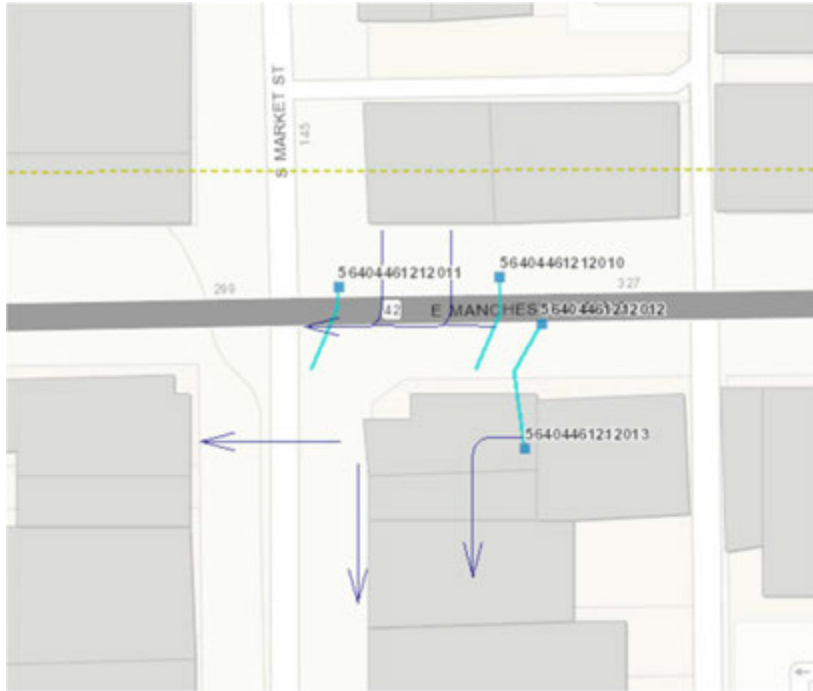
No.	Location ¹	Intersection	Orient.	Direc. ²	Description	Depth ³	Station Limits	Owner	Dispos.	Conflict ⁴	Comments
129	AT	E NUTWOOD ST / S PRAIRIE AVE	E/W	PERP	WATER LINE	TBD	47+75 -	West Basin	PIP	NO	PARLL ALONG N EDGE OF NUTWOOD, JOINS CENTER WATER MAIN LINE ON PRAIRIE
130	S	E NUTWOOD ST / S PRAIRIE AVE	E/W	PERP	UG ELECTRIC LINE	TBD	49+44 -	SCE	PIP	NO	
131	S	E NUTWOOD ST / S PRAIRIE AVE	N/S	PARLL	UG TELECOMM	UNK	49+50 65+50	UNK	PIP	NO	PREV. MARKED L3COMM
132	S	E NUTWOOD ST / S PRAIRIE AVE	E/W	PERP	WATER LATERAL	TBD	50+77 -	TBD	PIP	NO	
133	S	E NUTWOOD ST / S PRAIRIE AVE	E/W	PERP	UG ELECTRIC LINE	TBD	51+31 -	SCE	R&R	YES	XING E-SIDE COLUMN
134	S	E NUTWOOD ST / S PRAIRIE AVE	E/W	PERP	X" GAS LINE	UNK	52+40 -	UNK	PIP	NO	
135	S	E NUTWOOD ST / S PRAIRIE AVE	E/W	PERP	GAS LATERAL	TBD	52+60 -	SCG	PIP	NO	PREV. MARKED SCG
136	S	E NUTWOOD ST / S PRAIRIE AVE	E/W	PERP	WATER LINE	TBD	50+58 -	TBD	PIP	NO	
137	AT	PINCAY DR / S PRAIRIE AVE	N/S-E/W	PARLL/ PERP	ELECTRIC SIGNAL LINE	TBD	54+00 55+13	TBD	R&R	YES	ALL 4 SIDES OF INT. CONFLICTS W/ SW COLUMN
138	AT	PINCAY DR / S PRAIRIE AVE	E/W	PERP	WATER LINE	TBD	54+50 -	WBM	PIP	NO	PARLL ALONG N EDGE OF PINCAY, JOINS WESTERN WATER MAIN LINE, 2 N/S CONNECTORS W OF INT.
139	AT	PINCAY DR / S PRAIRIE AVE	E/W	PERP	27" TRUNK SEWER	TBD	54+50 -	LACSD-5	PIP	NO	CROSSES S PRAIRIE ST
140	AT	PINCAY DR / S PRAIRIE AVE	E/W	PERP	WATER LINE	TBD	54+48 -	TBD	PIP	NO	
141	E	SOUTH PRAIRIE AVE / E KELSO ST	N/S	PARLL	ABND SEWER	TBD	54+50 69+25	LACSD-5	R	NO	RUNS ALONG S PRAIRIE ST
142	AT	PINCAY DR / S PRAIRIE AVE	E/W	PERP	12" SEWER LINE	2.5	54+51 -	LACSD-5	PIP	NO	
143	AT	PINCAY DR / S PRAIRIE AVE	E/W	PERP	6" WATER LINE	TBD	54+71 -	COI	PIP	NO	
144	AT	PINCAY DR / S PRAIRIE AVE	E/W	PERP	2X UG ELECTRIC LINE	TBD	54+71 54+87	SCE	PIP	NO	
145	AT	PINCAY DR / S PRAIRIE AVE	N/S-E/W	PERP	OH ELECTRIC LINE	TBD	54+87 -	SCE	R&R	YES	
146	W	PINCAY DR / S PRAIRIE AVE		PARLL	GAS LINE	TBD	55+00 74+00	SCG	R&R	YES	
147	AT	PINCAY DR / S PRAIRIE AVE	E/W	PERP	4" GAS LINE	TBD	55+22 -	SCG	PIP	NO	CROSSES S PRAIRIE ST & CONT. ALONG PINCAY DR, PREV. MARKED SCG
148	S	PINCAY DR / S PRAIRIE AVE	E/W	PERP	WATER LATERAL	TBD	56+52 -		PIP	NO	W EDGE TO WESTERN WATER MAIN LINE ON PRAIRIE. PREV. MARKED WBM
149	AT	E PALMA DR / S PRAIRIE AVE	E/W	PERP	UG ELECTRIC LINE	TBD	59+55 -	TBD	PIP	NO	
150	S	S PRAIRIE AVE / PINCAY DR	-	PERP	WATER LINE	TBD	58+75 -	WBM	PIP	NO	E EDGE TO CENTER WATER MAIN LINE ON PRAIRIE
151	AT	E PALMA DR / S PRAIRIE AVE	E/W	PERP	WATER LATERAL	TBD	59+95 -	TBD	PIP	NO	PARLL ALONG C/L OF LA BREA, JOINS WESTERN WATER MAIN LINE, 1 SOUTHBOUND CONNECTOR W OF INT.
152	S	E PALMA DR / S PRAIRIE AVE	E/W	PERP	2X WATER LATERAL	TBD	60+44 60+60	TBD	PIP	NO	PREV. MARKED WBM
153	S	E PALMA DR / S PRAIRIE AVE	N/S	PARLL	UG TELECOM	UNK	60+43 63+60	UNK	PIP/R	MYB	NEAR MANY COLUMNS ALONG W EDGE OF S PRAIRIE AVE
154	S	E PALMA DR / S PRAIRIE AVE	E/W	PERP	2X GAS LATERAL	TBD	61+21 61+62	SCG	PIP	NO	
155	S	E PALMA DR / S PRAIRIE AVE	E/W	PERP	WATER LATERAL	TBD	63+25 -	TBD	PIP	NO	W EDGE TO WESTERN WATER MAIN LINE. PREV. MARKED WBM
156	S	E PALMA DR / S PRAIRIE AVE	E/W	PERP	6" GAS LINE	UNK	63+36 -	SCG	PIP	NO	
157	AT	E BUCKTHORN ST / S PRAIRIE AVE	N/S-EW	PARLL/ PERP	ELECTRICAL SIGNAL LINE	TBD	63+52 64+58	TBD	R&R	YES	CONFLICTS 2 COLUMNS (NW & SW OF INT)
158	N	E BUCKTHORN ST / S PRAIRIE AVE	E/W	PERP	UG TELECOM	TBD	63+63 -	TBD	PIP/R	MYB	
159	AT	E BUCKTHORN ST / S PRAIRIE AVE	E/W	PERP	6" WATER LATERAL	3.5	64+24 -	COI	PIP	NO	PARLL ALONG C/L OF BUCKTHORN, JOINS WESTERN WATER MAIN, 1 SOUTHBOUND CONNECTOR W OF INT., PREV. MARKED WBM
160	AT	E BUCKTHORN ST / S PRAIRIE AVE	N/S	PARLL	X" GAS LINE	TBD	64+00 81+72	SCG	R&R	YES	CONFLICTS WITH ALL 8 COLUMNS FROM STA. 75 TO 81+50 PREV. MARKED 8" SCG
161	S	E BUCKTHORN ST / S PRAIRIE AVE	N/S	PARLL	2" GAS LINE	UNK	64+60 68+17	SCG	R&R	YES	
162	S	E BUCKTHORN ST / S PRAIRIE AVE	E/W	PERP	2" GAS LINE	TBD	64+80 -	SCG	PIP	NO	

No.	Location ¹	Intersection	Orient.	Direc. ²	Description	Depth ³	Station Limits		Owner	Dispos.	Conflict ⁴	Comments
163	S	E BUCKTHORN ST / S PRAIRIE AVE	E/W	PERP	4X WATER LATERAL	TBD	64+68	68+41	TBD	PIP	NO	PREV. MARKED WBM
164	AT	E BUCKTHORN ST / S PRAIRIE AVE	E/W	PERP	X" GAS LINE	TBD	66+50	-	SCG	PIP	NO	
165	AT	ARBOR VITAE ST / S PRAIRIE AVE	N/S	PARLL	X" WATER MAIN LINE	TBD	67+52	74+00	WBM	PIP	NO	W OF PREVIOUS EASTERN WATER MAIN LINE
166	AT	ARBOR VITAE ST / S PRAIRIE AVE	N/S-E/W	PARLL/ PERP	UG ELECTRIC LINE	TBD	68+75	70+13	SCE	PIP	NO	L-SHAPE ACROSS N AND E SIDES OF INT
167	E	ARBOR VITAE ST / S PRAIRIE AVE	E/W	PERP	STORM DRAIN LINE	TBD	69+00	-	COI	PIP	NO	
168	AT	ARBOR VITAE ST / S PRAIRIE AVE	N/S-E/W	PARLL/ PERP	ELECTRIC SIGNAL LINE	TBD	68+	70+00	TBD	R&R	YES	CONFLICTS 2 COLUMNS (NW, SW CORNERS OF INT)
169	AT	ARBOR VITAE ST / S PRAIRIE AVE	E/W	PERP	8" WATER LINE	UNK	69+20	-	COI	PIP	NO	PARLL ALONG N EDGE OF ARBOR VITAE, JOINS WESTERN WATER MAIN LINE AT PRAIRIE
170	AT/S	ARBOR VITAE ST / S PRAIRIE AVE	N/S	PARLL	36" STROM DRAIN	TBD	69+22	82+00	LACFD	PIP	NO	RUNS ALONG S PRAIRIE AVE, XING UNDER HARDY ST BRIDGE
171	AT	ARBOR VITAE ST / S PRAIRIE AVE	E/W	PERP	2" GAS LINE	UNK	69+22	-	SCG	PIP	NO	ALONG N EDGE ARBOR VITAE ST
172	AT	ARBOR VITAE ST / S PRAIRIE AVE	E/W	PERP	UG ELECTRIC LINE	TBD	69+24	-	SCE	PIP	NO	
173	AT	ARBOR VITAE ST / S PRAIRIE AVE	E/W	PERP	6" WATER LINE	UNK	69+27	-	COI	PIP	NO	PARLL ALONG N EDGE OF ARBOR VITAE, JOINS WESTERN WATER MAIN LINE AT PRAIRIE. PREV. MARKED WBM
174	AT	ARBOR VITAE ST / S PRAIRIE AVE	E/W	PERP	10" WATER LINE	TBD	69+53	-	COI	PIP	NO	
175	AT	ARBOR VITAE ST / S PRAIRIE AVE	E/W	PERP	15" SEWER LINE	2.5	69+37	69+52	LACSD-5	PIP	NO	CROSSES S PRAIRIE AVE
176	S	ARBOR VITAE ST / S PRAIRIE AVE	N/S	PARLL	WATER MAIN LINE (8"	TBD	69+50	81+25		PIP	NO	WESTERN WATER MAIN LINE CUTS W OF PRAIRIE
177	S	ARBOR VITAE ST / S PRAIRIE AVE	N/S	PARLL	WATER MAIN LINE	TBD	69+50	82+00	WBM	PIP	NO	2ND WEST BEG @ INTERSECTION & RUNNING S ALONG PRAIRIE
178	S	ARBOR VITAE ST / S PRAIRIE AVE	N/S	PARLL	3" GAS LINE	TBD	69+70	71+23	SCG	PIP	NO	
179	S	ARBOR VITAE ST / S PRAIRIE AVE	N/S	PARLL	WATER LINE	TBD	69+95	-	WBM	PIP	NO	E OF ROADWAY CONNECTED TO MIXC-UTLY ARBOR VITAE LINE TO N
180	S	ARBOR VITAE ST / S PRAIRIE AVE	E/W	PERP	WATER LINE	TBD	69+95	-		PIP	NO	XING ROADWAY E/W
181	S	ARBOR VITAE ST / S PRAIRIE AVE	N/S	PARLL	8" WATER LINE	UNK	70+00	82++	COI	R&R	YES	CONFLICTS W/ 7 COLUMNS FROM STA. 74+50 TO 82+00
182	S	ARBOR VITAE ST / S PRAIRIE AVE	N/S	PARLL	8" SEWER LINE	UNK	70+50	82++	COI	R&R	YES	CONFLICTS W/ 5 COLUMNS DOWN S PRAIRIE AVE UNTIL STA. 75+00
183	S	ARBOR VITAE ST / S PRAIRIE AVE	N/S	DIAG	ELECTRIC LINE	TBD	72+47	73+30	TBD	R&R	YES	BRANCH OFF FROM MAIN DOWN C/L
184	S	ARBOR VITAE ST / S PRAIRIE AVE	E/W	PERP	WATER LINE	TBD	72+68	-	TBD	PIP/R	MYB	XING ALL 4 PARLL WATER MAIN LINES (2ND E LINE ENDED)
185	AT	E VICTORY ST / S PRAIRIE AVE	N/S	DIAG	4x ELECTRIC LINE (clu	TBD	73+78	74+70	TBD	PIP	NO	BRANCH OFF FROM MAIN DOWN C/L
186	AT	ARBOR VITAE ST / S PRAIRIE AVE	E/W	PERP	WATER LINE	TBD	74+40	-	TBD	PIP	NO	XING ROADWAY CONNECTING E/CL & W WATER MAIN LINES
187	S	E VICTORY ST / S PRAIRIE AVE	N/S-E/W	PARLL/ PERP	WATER LINE (U)	TBD	74+50	75+36	WBM	PIP	NO	U-SHAPE IN E/W DIRECTION, XING ROADWAY
188	S	E VICTORY ST / S PRAIRIE AVE	E/W	PERP	GAS LATERAL	TBD	74+50	-	SCG	PIP	NO	
189	S	E VICTORY ST / S PRAIRIE AVE	E/W	PERP	GAS LATERAL	TBD	76+24	-	SCG	PIP	NO	
190	S	E VICTORY ST / S PRAIRIE AVE	E/W	PERP	WATER LATERAL	TBD	78+72	-	TBD	R&R	YES	PREV. MARKED WBM
191	S	E VICTORY ST / S PRAIRIE AVE	E/W	PERP	3X WATER LATERALS	TBD	79+50	79+53	TBD	R&R	YES	
192	W	S PRAIRIE AVE / E HARDY ST	N/S	PARLL	4" GAS LINE	TBD	80+80	81+72	SCG	R&R	YES	OVERLAPS XIN GAS LINE
193	N	E HARDY ST / S PRAIRIE AVE	N/S-E/W	PERP	2X 24" SD LATERALS	TBD	81+	82+	LACFD	PIP	NO	V SHAP CONNECTED TO 36" SD MAIN LINE
194	AT	S PRAIRIE AVE / E HARDY ST (97TH)	N/S-E/W	PERP	10" WATER LINE	UNK	82+00	82+36	WBM	PIP	NO	CONNECTED TO W WATER MAIN LINE, SPLITS AND CONTINUES E ALONG N EDGE OF 97TH ST
195	N	E HARDY ST / S PRAIRIE AVE	E/W	PERP	2X UG ELECTRIC LINE	TBD	82+00	82++	SCE	R&R	YES	CONFLICTS WITH LAST COLUMN @ NW CORNER OF INT.
196	N	E HARDY ST / S PRAIRIE AVE	E/W	PERP	ELECTRIC SIGNAL LINE	TBD	82+00	-	TBD	R&R	YES	

No.	Location ¹	Intersection	Orient.	Direc. ²	Description	Depth ³	Station Limits	Owner	Dispos.	Conflict ⁴	Comments	
197	AT	E HARDY ST / S PRAIRIE AVE	E/W	PERP	4" GAS LINE	UNK	82++	-	SCG	PIP	NO	CROSSES S PRAIRIE ST CONT. ALONG HARDY ST, CONFLICTS WITH BRIDGE/STAIR
THESE NEED ADDITIONAL REVIEW- MAY BE MISSING FROM THE MODEL. DIFFICULT TO COMPARE DUE TO CHANGING INFORMATION												
198	E	S PRAIRIE AVE / E HARDY ST		PARLL	39" STORM DRAIN				LACSD-5			RUNS ALONG S PRAIRIE ST
<p>¹ Conflicts marked as N/S/E/W/AT, indicating conflict is either "North of", "South of", "East of", "West of", or "At" the intersection listed in the next cell.</p> <p>² Utility orientation with respect to the track guideway or station.</p> <p>³ Depth in feet. "UNK" indicates utilities which have BaseMap callouts but no specified depth. "TBD" indicates utilities with no call out (via MarkThomas Survey).</p> <p>⁴ Conflicts marked 'YES' indicate utilities which impact columns. Utilities marked "NO" are located under the guideway. "MYB" indicates utilities which are in close proximity and may be in conflict with columns or stations.</p>												

C. MISCELLANEOUS NOTES

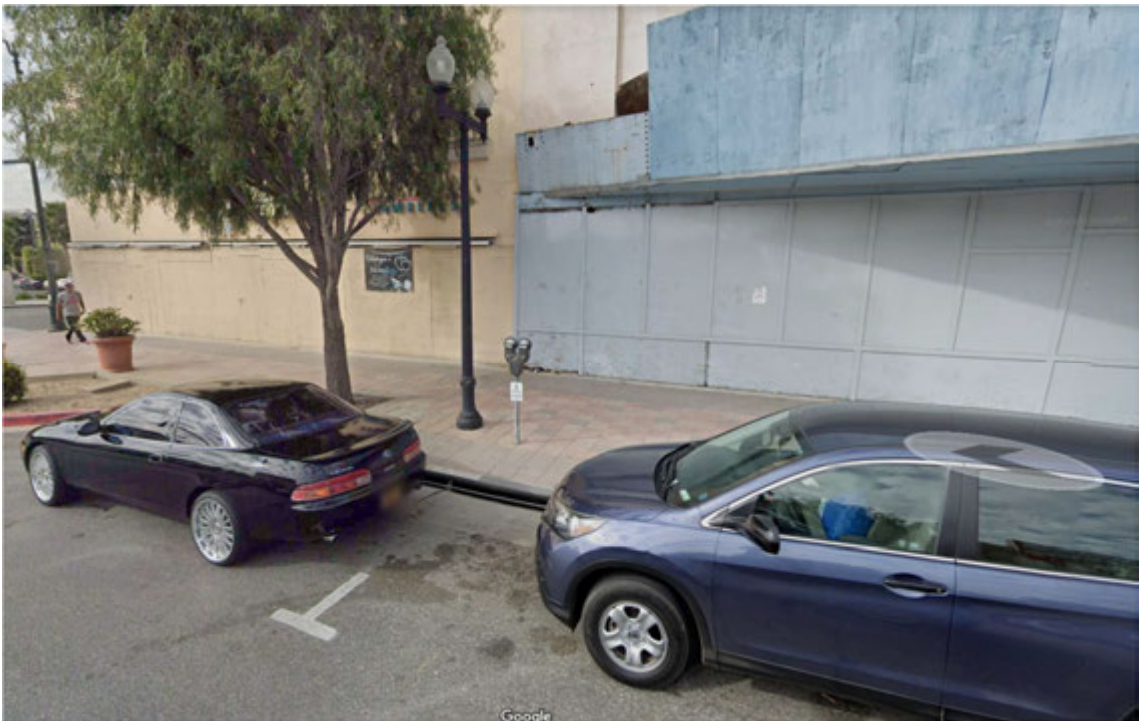
Picture of possible SD conflicts at Market and Manchester. They are labeled as LA County Catch Basins.



Storm drain on Manchester



Storm drain on Market St





Q.2

Utility Impact Data



Address	Use Type	Size (SF)	Unit/1,000	W Rate	W GPD	W MGD	W AFY	
310 E. Florence Ave	Restaurant	1,200	1.200		1,200	1,440.0	0.001	1.61
300 E. Florence Ave	Restaurant	4,762	4.762		1,200	5,714.4	0.006	6.40
254 N. Market St	Restaurant	4,608	4.608		1,200	5,529.6	0.006	6.19
250 N. Market St	Auto Service	44,000	44.000		120	5,280.0	0.005	5.91
240 N. Market St	Shopping Center	12,300	12.300		390	4,797.0	0.005	5.37
230 N. Market St	Store	22,194	22.194		120	2,663.3	0.003	2.98
224 N. Market St	Store	5,000	5.000		120	600.0	0.001	0.67
222 N. Market St	Shopping Center	25,500	25.500		390	9,945.0	0.010	11.14
210 N. Market St	Shopping Center	7,348	7.348		390	2,865.7	0.003	3.21
500 E. Manchester Blvd	Supermarket	76,402	76.402		180	13,752.4	0.014	15.40
510 E. Manchester Blvd	Gas Station	202	0.202		120	24.2	0.000	0.03
150 S. Market St	Store	16,575	16.575		120	1,989.0	0.002	2.23
					TOTAL	54,600.6	0.055	61.16

Revised

401 South Prairie Avenue	Office	28,029		28.029	240	6,727.0	0.007	7.54
923 South Prairie Ave	Store	9,744		9.744	120	1,169.28	0.001	1.31
945 South Prairie Ave	Office	8,357		8.357	240	2,005.68	0.002	2.25
1003 South Prairie Ave	Office	5,522		5.522	240	1,325.28	0.001	1.48
1011 South Prairie Ave	Commercial	1,098		1	240	263.52	0.000	0.30
1035 South Prairie Ave	Shopping Center	30,182		30.182	390	11,770.98	0.012	13.19
Total		54,903		Total		77,862.3	0.078	87.22
Overall SF Total		303,023				6,280	0.006	7.03

Proposed Project Water Demand

Proposed Project Water Der Square Footage	Demand Factc GPD	AFY		
Stations	27,600	0.05	1380	1.5457932
MSF	75000	0.05	3750	4.200525
Train Wash			230	0.2576322
Vons Replacement Store	46,400	0.18	8,352	9.35540928
Total Daily Demand			13712	15.35935968
Total Annual Demand			5,004,880	

Difference: 71.86

Address	Use Type	Size (SF)	Unit (1,000 sf)	WW Rate	WW GPD	WW MGD	WW AFY
310 E. Florence Ave	Restaurant	1,200	1.200	1,000	1,200.0	0.001	1.34
300 E. Florence Ave	Restaurant	4,762	4.762	1,000	4,762.0	0.005	5.33
254 N. Market St	Restaurant	4,608	4.608	1,000	4,608.0	0.005	5.16
250 N. Market St	Auto Service	44,000	44.000	100	4,400.0	0.004	4.93
240 N. Market St	Shopping Center	12,300	12.300	325	3,997.5	0.004	4.48
230 N. Market St	Store	22,194	22.194	100	2,219.4	0.002	2.49
224 N. Market St	Store	5,000	5.000	100	500.0	0.001	0.56
222 N. Market St	Shopping Center	25,500	25.500	325	8,287.5	0.008	9.28
210 N. Market St	Shopping Center	7,348	7.348	325	2,388.1	0.002	2.68
500 E. Manchester Blvd	Supermarket	76,402	76.402	150	11,460.3	0.011	12.84
510 E. Manchester Blvd	Gas Station	202	0.202	100	20.2	0.000	0.02
150 S. Market St	Store	16,575	16.575	100	1,657.5	0.002	1.86
				TOTAL	45,500.5	0.046	50.97

Revised

401 South Prairie Avenue	Office	28,029	28.029	200	5,605.8	0.006	6.28
923 South Prairie Ave	Store	9,744	9.744	100	974.4	0.001	1.09
945 South Prairie Ave	Office	8,357	8.357	200	1,671.4	0.002	1.87
1003 South Prairie Ave	Office	5,522	5.522	200	1,104.4	0.001	1.24
1011 South Prairie Ave	Commercial	1,098	1	200	219.6	0.000	0.25
1035 South Prairie Ave	Shopping Center	30,182	30.182	325	9,809.2	0.010	10.99
		303,023	Total		64,885.3	0.065	72.68

500 E. Manchester Blvd	Vons Replacement Store	46,400	46.400	150	6,960.0	0.007	7.80
------------------------	------------------------	--------	--------	-----	---------	-------	------

Address	Use Type	Size (SF)	Unit	Rate	lbs	tons	tons/year
310 E. Florence Ave	Restaurant	1,200	12.000	0.5	6.0	0.003	1.10
300 E. Florence Ave	Restaurant	4,762	47.620	0.5	23.8	0.012	4.35
254 N. Market St	Restaurant	4,608	46.080	0.5	23.0	0.012	4.20
250 N. Market St	Auto Service	44,000	440.000	0.9	396.0	0.198	72.27
240 N. Market St	Shopping Center	12,300	123.000	2.5	307.5	0.154	56.12
230 N. Market St	Store	22,194	221.940	3.12	692.5	0.346	126.37
224 N. Market St	Store	5,000	50.000	3.12	156.0	0.078	28.47
222 N. Market St	Shopping Center	25,500	255.000	2.5	637.5	0.319	116.34
210 N. Market St	Shopping Center	7,348	73.480	2.5	183.7	0.092	33.53
500 E. Manchester Blvd	Supermarket	76,402	764.020	3.12	2,383.7	1.192	435.03
510 E. Manchester Blvd	Gas Station	202	2.020	0.9	1.8	0.001	0.33
150 S. Market St	Store	16,575	165.750	3.12	517.1	0.259	94.38
				TOTAL	5,329	2.664	972.49

Revised

401 South Prairie Avenue	Office	28,029	28.029	0.6	17	0.008	3.07
923 South Prairie Ave	Store	9,744	9.744	3.12	30.40	0.015	5.55
945 South Prairie Ave	Office	8,357	8.357	0.6	5.01	0.003	0.92
1003 South Prairie Ave	Office	5,522	5.522	0.6	3.31	0.002	0.60
1011 South Prairie Ave	Commercial	1,098	1	0.6	0.66	0.000	0.12
1035 South Prairie Ave	Shopping Center	30,182	30.182	2.5	75.46	0.038	13.77
		303,023	Total		5,460.4	2.730	996.52

500 E. Manchester Blvd	Vons Replacement Store	46,400	464.000	3.12	1,447.7	0.724	264.20
------------------------	------------------------	--------	---------	------	---------	-------	--------