

APPENDIX 6b

GeoTracker



SHELL NORTH PALM SPRINGS (T0606500989) - (MAP)

[SIGN UP FOR EMAIL ALERTS](#)

20000 N INDIAN AVENUE
 NORTH PALM SPRINGS, CA 92258
 RIVERSIDE COUNTY
 LUST CLEANUP SITE ([INFO](#))
[PRINTABLE CASE SUMMARY](#) / [CSM REPORT](#)

CLEANUP OVERSIGHT AGENCIES

RIVERSIDE COUNTY LOP (**LEAD**) - CASE #: 200117206
 CASEWORKER: [Riverside County LOP](#)
 COLORADO RIVER BASIN RWQCB (REGION 7) - CASE #: 7T2258001
 CASEWORKER: [KOLA OLATUNBOSUN](#)
 COLORADO RIVER BASIN RWQCB (REGION 7) - CASE #: 7T2258002
 CASEWORKER: [KOLA OLATUNBOSUN](#)

[Summary](#) [Cleanup Action Report](#) [Regulatory Activities](#) [Environmental Data \(ESI\)](#) [Site Maps / Documents](#) [Community Involvement](#) [Related Cases](#)

Regulatory Profile

[PRINTABLE CASE SUMMARY](#)

CLEANUP STATUS - [DEFINITIONS](#)

COMPLETED - CASE CLOSED AS OF 12/14/2001 - [CLEANUP STATUS HISTORY](#)

POTENTIAL CONTAMINANTS OF CONCERN

DIESEL, GASOLINE

POTENTIAL MEDIA OF CONCERN

SOIL

FILE LOCATION

LOCAL AGENCY WAREHOUSE

USER DEFINED BENEFICIAL USE

GW - MUNICIPAL AND DOMESTIC SUPPLY

DESIGNATED BENEFICIAL USE(S) - [DEFINITIONS](#)

MUN, AGR, IND

DWR GROUNDWATER SUB-BASIN NAME

Coachella Valley - Indio (7-021.01)

CALWATER WATERSHED NAME

Whitewater - Coachella - Mission Creek (719.42)

Post Closure Site Management Requirements

NOTIFY PRIOR TO CHANGE IN LAND USE

Future Land Use Reported at Closure

UNKNOWN

Site History

No site history available

GEOTRACKER

20th avenue and Little Morongo Road, Desert Hot Spring...

Map Address

Map Satellite

Sites and Facilities - INCO

Cleanup Sites

- LUST Cleanup Sites
- Cleanup Program Sites
- Military Cleanup Sites
- DTSC Cleanup Sites

Permitted Facilities

- Waste Discharge Requirements (WDR) Sites
- Permitted USTs - [INFO](#)
- DTSC Hazardous Waste Sites
- Land Disposal Sites
- Irrigated Lands Regulatory Program Sites
- Oil / Gas Sites
- Confined Animal Sites

Other Sites

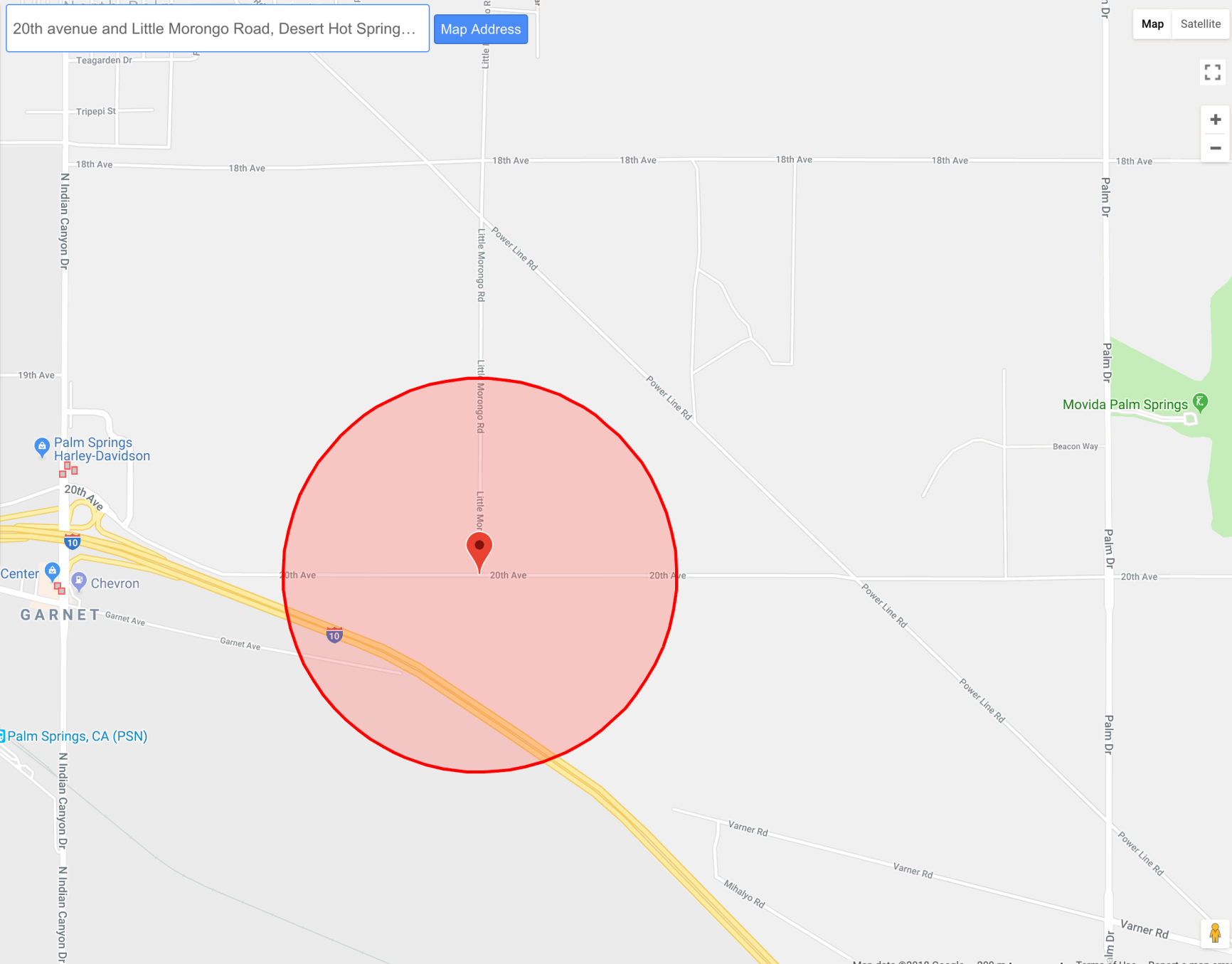
- Project Sites
- Non-Case Information Sites
- Sampling Points - Public
- Field Points

SIGNIFIES A CLOSED SITE

Tools

Map Coverages

[TAKE A TOUR](#) [VIEW ON GAMA](#)



GEOTRACKER

20th avenue and Little Morongo Road, Desert Hot Spring...

Map Address

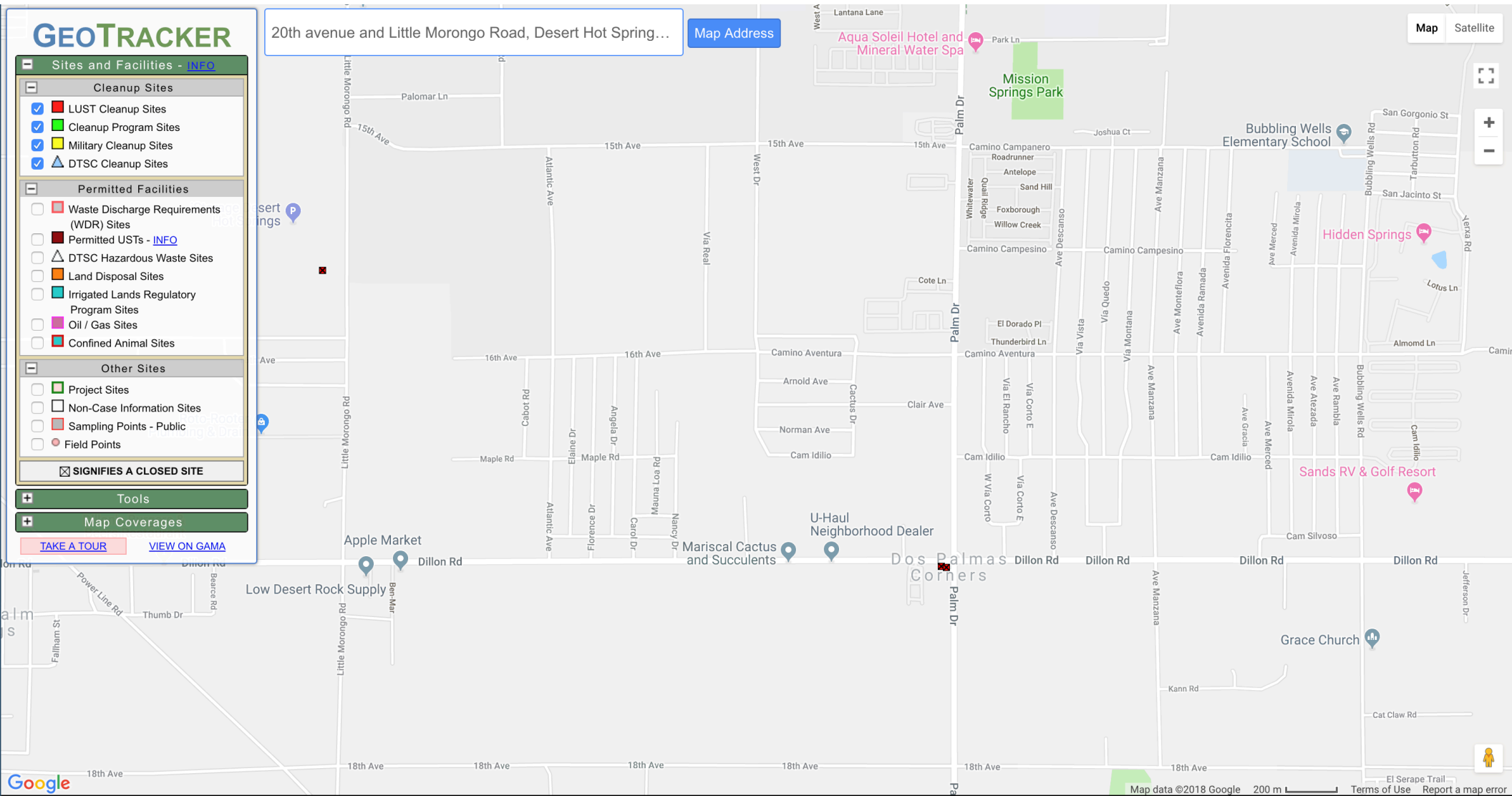
Map Satellite

- Sites and Facilities - INFO**
- Cleanup Sites**
- LUST Cleanup Sites
 - Cleanup Program Sites
 - Military Cleanup Sites
 - ▲ DTSC Cleanup Sites
- Permitted Facilities**
- Waste Discharge Requirements (WDR) Sites
 - Permitted USTs - INFO
 - ▲ DTSC Hazardous Waste Sites
 - Land Disposal Sites
 - Irrigated Lands Regulatory Program Sites
 - Oil / Gas Sites
 - Confined Animal Sites
- Other Sites**
- Project Sites
 - Non-Case Information Sites
 - Sampling Points - Public
 - Field Points
- SIGNIFIES A CLOSED SITE

Tools

Map Coverages

[TAKE A TOUR](#) [VIEW ON GAMA](#)



SITES CURRENTLY VISIBLE ON MAP

3 SITES LISTED

[EXPORT THIS LIST TO EXCEL](#)

SITE NAME	GLOBAL ID	STATUS	ADDRESS	CITY
<input checked="" type="checkbox"/> EXPRESSWAY MARKET	T0606504198	COMPLETED - CASE CLOSED	17001 PALM DRIVE	DESERT HOT SPRINGS
<input checked="" type="checkbox"/> EXPRESSWAY MARKET	T0606500964	COMPLETED - CASE CLOSED	17001 PALM DRIVE	DESERT HOT SPRINGS
<input checked="" type="checkbox"/> TRI-STAR CONTRACTING INC	T0606596693	COMPLETED - CASE CLOSED	15501 LITTLE MORONGO ROAD	DESERT HOT SPRINGS



PILOT TRAVEL CENTER #307 (T0606542836) - [\(MAP\)](#)

[SIGN UP FOR EMAIL ALERTS](#)

6605 N INDIAN AVE
NORTH PALM SPRINGS, CA 92258
RIVERSIDE COUNTY
LUST CLEANUP SITE ([INFO](#))
[PRINTABLE CASE SUMMARY](#) / [CSM REPORT](#)

CLEANUP OVERSIGHT AGENCIES
RIVERSIDE COUNTY LOP (**LEAD**) - CASE #: 200723270
COLORADO RIVER BASIN RWQCB (REGION 7) - CASE #: 7T2258004

[Summary](#) [Cleanup Action Report](#) [Regulatory Activities](#) [Environmental Data \(ESI\)](#) [Site Maps / Documents](#) [Community Involvement](#) [Related Cases](#)

Regulatory Profile

[PRINTABLE CASE SUMMARY](#)

CLEANUP STATUS - [DEFINITIONS](#)

COMPLETED - CASE CLOSED AS OF 10/15/2007 - [CLEANUP STATUS HISTORY](#)

POTENTIAL CONTAMINANTS OF CONCERN

DIESEL

FILE LOCATION

LOCAL AGENCY

DWR GROUNDWATER SUB-BASIN NAME

Coachella Valley - Indio (7-021.01)

POTENTIAL MEDIA OF CONCERN

SOIL

USER DEFINED BENEFICIAL USE

GW - MUNICIPAL AND DOMESTIC SUPPLY, SW -
MUNICIPAL AND DOMESTIC SUPPLY

DESIGNATED BENEFICIAL USE(S) - [DEFINITIONS](#)

MUN, AGR, IND

CALWATER WATERSHED NAME

Whitewater - Coachella - Mission Creek (719.42)

Site History

No site history available

[Back to Top](#)

[Conditions of Use](#)

[Privacy Policy](#)

[Accessibility](#)

[Contact Us](#)

76 STATION 5699 (T0606574311) - [\(MAP\)](#)[SIGN UP FOR EMAIL ALERTS](#)

19995 INDIAN AVE
NORTH PALM SPRINGS, CA 92258
RIVERSIDE COUNTY
LUST CLEANUP SITE [\(INFO\)](#)
[PRINTABLE CASE SUMMARY](#) / [CSM REPORT](#)

CLEANUP OVERSIGHT AGENCIES

RIVERSIDE COUNTY LOP (**LEAD**) - CASE #: 200824965
COLORADO RIVER BASIN RWQCB (REGION 7) - CASE #: 7T2258005
CASEWORKER: [KAI DUNN](#)

[Summary](#) [Case Reviews](#) [Cleanup Action Report](#) [Regulatory Activities](#) [Environmental Data \(ESI\)](#) [Site Maps / Documents](#) [Community Involvement](#) [Related Cases](#)

Regulatory Profile

[PRINTABLE CASE SUMMARY](#)CLEANUP STATUS - [DEFINITIONS](#)

COMPLETED - CASE CLOSED AS OF 12/10/2009 - [CLEANUP STATUS HISTORY](#)

POTENTIAL CONTAMINANTS OF CONCERN

DIESEL, GASOLINE

FILE LOCATION

LOCAL AGENCY WAREHOUSE

DWR GROUNDWATER SUB-BASIN NAME

Coachella Valley - Indio (7-021.01)

POTENTIAL MEDIA OF CONCERN

SOIL

USER DEFINED BENEFICIAL USE

GW - MUNICIPAL AND DOMESTIC SUPPLY

DESIGNATED BENEFICIAL USE(S) - [DEFINITIONS](#)

MUN, AGR, IND

CALWATER WATERSHED NAME

Whitewater - Coachella - Mission Creek (719.42)

Post Closure Site Management Requirements

NOTIFY PRIOR TO CHANGE IN LAND USE

Future Land Use Reported at Closure

COMMERCIAL

Site History

6 borings were advanced December 3 and 4, 2007, during a due diligence assessment. Up to 320 ppm TPHd was detected in B-4S @ 10" by the NW dispenser. The site was placed into LOP

5 soil borings were drilled November 24 and 25, 2008, to 50". Soil samples were taken every 5" and analyzed in an on-site mobile laboratory. No TPHg, BTEX or oxygenates were detected except for one hit of 4.6 ppm TPHg at 15" in boring 10.



PILOT TRAVEL CENTER #307 (T0606525609) - (MAP)

[SIGN UP FOR EMAIL ALERTS](#)

6605 N INDIAN AVE
 NORTH PALM SPRINGS, CA 92258
 RIVERSIDE COUNTY
 LUST CLEANUP SITE ([INFO](#))
[PRINTABLE CASE SUMMARY](#) / [CSM REPORT](#)

CLEANUP OVERSIGHT AGENCIES
 RIVERSIDE COUNTY LOP (**LEAD**) - CASE #: 200219003
 COLORADO RIVER BASIN RWQCB (REGION 7) - CASE #: 7T2258003
 CASEWORKER: [Phan Le](#)

- Summary
- Cleanup
- Action Report
- Regulatory Activities
- Environmental Data (ESI)
- Site Maps / Documents
- Community Involvement
- Related Cases

Regulatory Profile

[PRINTABLE CASE SUMMARY](#)

CLEANUP STATUS - DEFINITIONS

COMPLETED - CASE CLOSED AS OF 3/22/2004 - [CLEANUP STATUS HISTORY](#)

POTENTIAL CONTAMINANTS OF CONCERN

DIESEL

POTENTIAL MEDIA OF CONCERN

SOIL

FILE LOCATION

LOCAL AGENCY WAREHOUSE

USER DEFINED BENEFICIAL USE

NONE SPECIFIED

DESIGNATED BENEFICIAL USE(S) - DEFINITIONS

MUN, AGR, IND

DWR GROUNDWATER SUB-BASIN NAME

Coachella Valley - Indio (7-021.01)

CALWATER WATERSHED NAME

Whitewater - Coachella - Mission Creek (719.42)

Post Closure Site Management Requirements

NOTIFY PRIOR TO CHANGE IN LAND USE

Future Land Use Reported at Closure

UNKNOWN

Site History

No site history available



SHELL NORTH PALM SPRINGS (T10000000876) - (MAP)

[SIGN UP FOR EMAIL ALERTS](#)

20000 N INDIAN AVE
 NORTH PALM SPRINGS, CA 92258
 RIVERSIDE COUNTY
LUST CLEANUP SITE (INFO)
[PRINTABLE CASE SUMMARY](#) / [CSM REPORT](#)

CLEANUP OVERSIGHT AGENCIES

RIVERSIDE COUNTY LOP (**LEAD**) - CASE #: 9914939
CASEWORKER: [Riverside County LOP](#)
 COLORADO RIVER BASIN RWQCB (REGION 7) - CASE #: 7T2258001
 COLORADO RIVER BASIN RWQCB (REGION 7) - CASE #: 7T2258002

[Summary](#) [Cleanup Action Report](#) [Regulatory Activities](#) [Environmental Data \(ESI\)](#) [Site Maps / Documents](#) [Community Involvement](#) [Related Cases](#)

Regulatory Profile

[PRINTABLE CASE SUMMARY](#)

CLEANUP STATUS - [DEFINITIONS](#)

COMPLETED - CASE CLOSED AS OF 10/21/1999 - [CLEANUP STATUS HISTORY](#)

POTENTIAL CONTAMINANTS OF CONCERN

NONE SPECIFIED

POTENTIAL MEDIA OF CONCERN

NONE SPECIFIED

FILE LOCATION

LOCAL AGENCY WAREHOUSE

USER DEFINED BENEFICIAL USE

NONE SPECIFIED

DESIGNATED BENEFICIAL USE(S) - [DEFINITIONS](#)

MUN, AGR, IND

DWR GROUNDWATER SUB-BASIN NAME

Coachella Valley - Indio (7-021.01)

CALWATER WATERSHED NAME

Whitewater - Coachella - Mission Creek (719.42)

Site History

No site history available

[Back to Top](#)

[Conditions of Use](#)

[Privacy Policy](#)

[Accessibility](#)

[Contact Us](#)



EXPRESSWAY MARKET (T0606500964) - [\(MAP\)](#)

[SIGN UP FOR EMAIL ALERTS](#)

17001 PALM DRIVE
DESERT HOT SPRINGS, CA 92240
RIVERSIDE COUNTY
LUST CLEANUP SITE ([INFO](#))
[PRINTABLE CASE SUMMARY](#) / [CSM REPORT](#)

CLEANUP OVERSIGHT AGENCIES

RIVERSIDE COUNTY LOP (**LEAD**) - CASE #: 93923

CASEWORKER: [Riverside County LOP](#)

COLORADO RIVER BASIN RWQCB (REGION 7) - CASE #: 7T2240003

CASEWORKER: [Phan Le](#)

- Summary**
- [Cleanup Action Report](#)
- [Regulatory Activities](#)
- [Environmental Data \(ESI\)](#)
- [Site Maps / Documents](#)
- [Community Involvement](#)
- [Related Cases](#)

Regulatory Profile

[PRINTABLE CASE SUMMARY](#)

CLEANUP STATUS - [DEFINITIONS](#)

COMPLETED - CASE CLOSED AS OF 6/7/1994 - [CLEANUP STATUS HISTORY](#)

POTENTIAL CONTAMINANTS OF CONCERN

GASOLINE

FILE LOCATION

LOCAL AGENCY WAREHOUSE

DWR GROUNDWATER SUB-BASIN NAME

Coachella Valley - Mission Creek (7-021.02)

USER DEFINED BENEFICIAL USE

NONE SPECIFIED

POTENTIAL MEDIA OF CONCERN

UNDER INVESTIGATION

DESIGNATED BENEFICIAL USE(S) - [DEFINITIONS](#)

MUN, AGR, IND

CALWATER WATERSHED NAME

Whitewater - Coachella - Mission Creek (719.42)

Site History

No site history available

[Back to Top](#)

[Conditions of Use](#)

[Privacy Policy](#)

[Accessibility](#)

[Contact Us](#)



EXPRESSWAY MARKET (T0606504198) - [\(MAP\)](#)

[SIGN UP FOR EMAIL ALERTS](#)

17001 PALM DRIVE
DESERT HOT SPRINGS, CA 92240
RIVERSIDE COUNTY
LUST CLEANUP SITE ([INFO](#))
[PRINTABLE CASE SUMMARY](#) / [CSM REPORT](#)

CLEANUP OVERSIGHT AGENCIES
RIVERSIDE COUNTY LOP (**LEAD**) - CASE #: 200421119
COLORADO RIVER BASIN RWQCB (REGION 7) - CASE #: 712240008
CASEWORKER: [Phan Le](#)

- Summary**
- [Cleanup Action Report](#)
- [Regulatory Activities](#)
- [Environmental Data \(ESI\)](#)
- [Site Maps / Documents](#)
- [Community Involvement](#)
- [Related Cases](#)

Regulatory Profile

[PRINTABLE CASE SUMMARY](#)

CLEANUP STATUS - [DEFINITIONS](#)

COMPLETED - CASE CLOSED AS OF 7/14/2005 - [CLEANUP STATUS HISTORY](#)

POTENTIAL CONTAMINANTS OF CONCERN

GASOLINE

POTENTIAL MEDIA OF CONCERN

SOIL

FILE LOCATION

REGIONAL BOARD

USER DEFINED BENEFICIAL USE

NONE SPECIFIED

DESIGNATED BENEFICIAL USE(S) - [DEFINITIONS](#)

MUN, AGR, IND

DWR GROUNDWATER SUB-BASIN NAME

Coachella Valley - Mission Creek (7-021.02)

CALWATER WATERSHED NAME

Whitewater - Coachella - Mission Creek (719.42)

Site History

No site history available

[Back to Top](#)

[Conditions of Use](#)

[Privacy Policy](#)

[Accessibility](#)

[Contact Us](#)