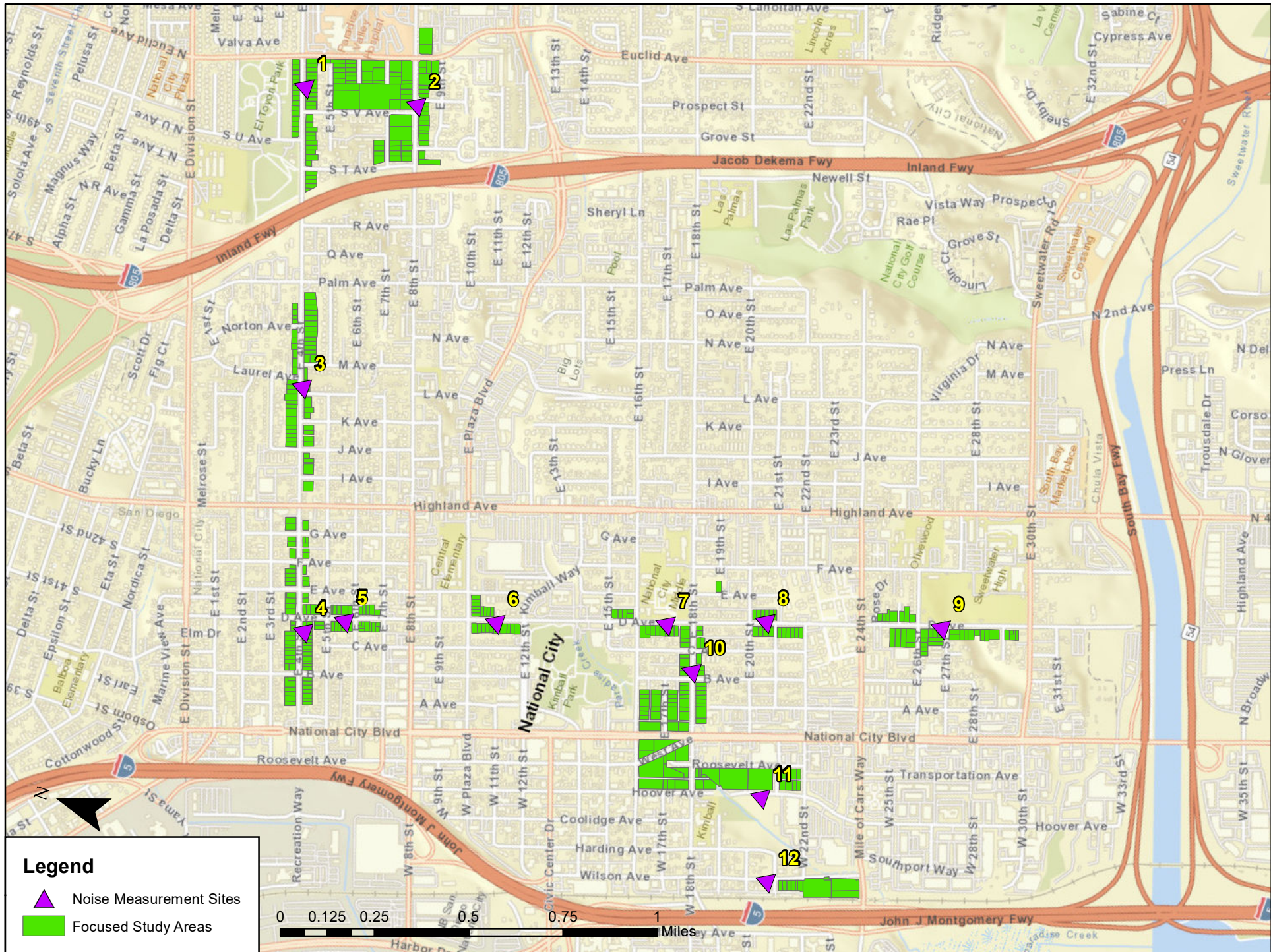

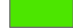


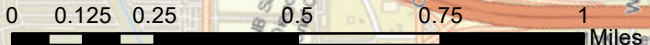
13.C.3 TRAFFIC NOISE MODEL OUTPUTS

Site No.	Leq	Lmax	Lmin	L90	L50	L10	L1	Focus Area	Street	Nearest Cross Street	Time Start	Time End	Traffic (15-Minute Counts)			
													NB	SB	EB	WB
1	64.2	77.2	54.4	56.5	60.0	68.0	73.5	4th ST	4th St	Euclid	1:15PM	1:30PM			50	48
2	67.9	81.0	56.9	60.0	64.5	71.5	76.0	8th ST	5th St	V Ave	12:53PM	1:08PM			100	90
3	59.7	81.7	44.6	47.5	52.5	63.5	68.5	4th ST	6th St	Laurel Ave	1:35PM	1:50PM			35	40
4	60.4	84.2	51.1	54.0	56.5	62.5	68.5	4th ST	7th St	D Ave	12:22PM	12:37PM			34	28
5	Skipped due to too many dog barking in the area. Close to site 6.															
6	59.8	73.7	46.3	50.5	56.0	64.0	68.5	D Ave	D Ave	Plaza Ave	12:00PM	12:15PM	47	44		
7	60.2	75.7	45.6	50.0	55.5	64.0	69.0	D Ave	D Ave	18th St	11:40AM	11:52AM	40	30		
8	60.1	75.4	44.0	47.5	52.5	64.0	71.0	D Ave	D Ave	21st St	10:05AM	10:20AM	26	32		
9	63.4	80.3	41.4	45.0	53.0	67.5	73.0	D Ave	D Ave	26th St	9:45AM	10:00AM	32	26		
10	63.2	79.0	49.0	57.5	58.5	67.0	72.5	18th Ave	18th Ave	B Ave	11:20AM	11:35AM			47	45
11	52.8	68.0	44.0	47.0	55.5	62.0	65.0	16th Ave	Hoover Ave	21st St	10:30AM	10:45AM	4	6		
12	61.3	75.3	52.5	54.5	57.0	64.0	71.0	24th St	24th St	Harding Ave	10:56AM	11:12AM	14	20		



Legend

-  Noise Measurement Sites
-  Focused Study Areas



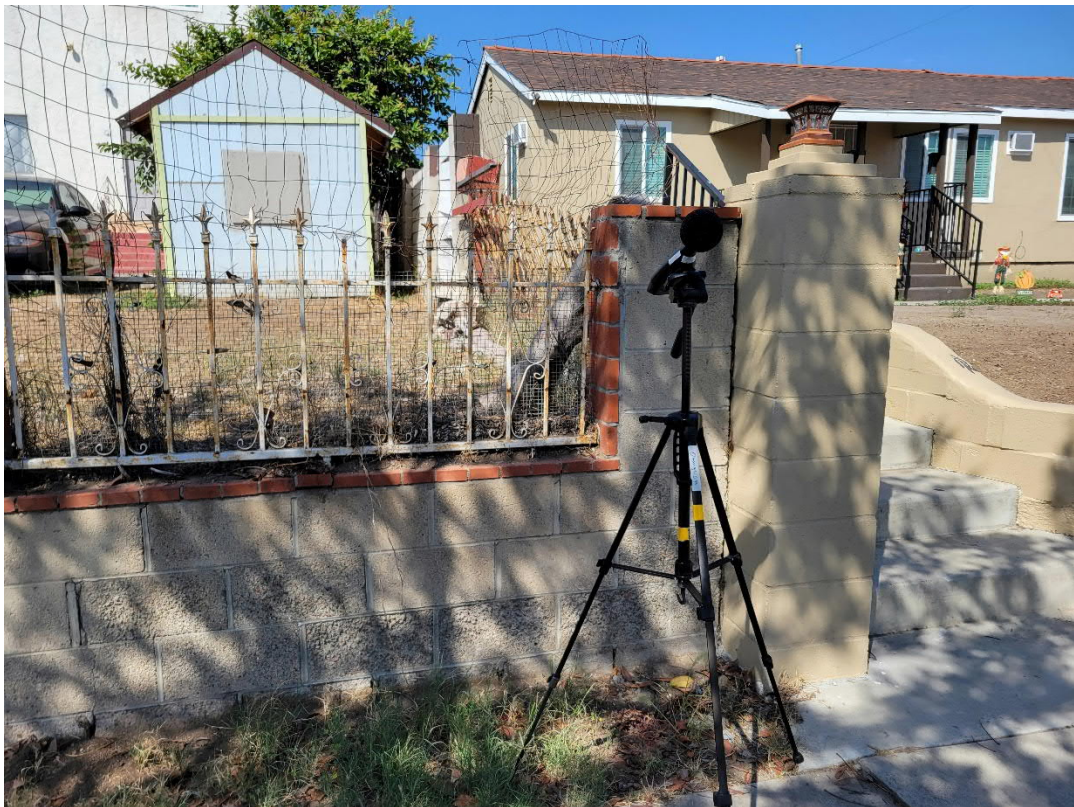
Site 1



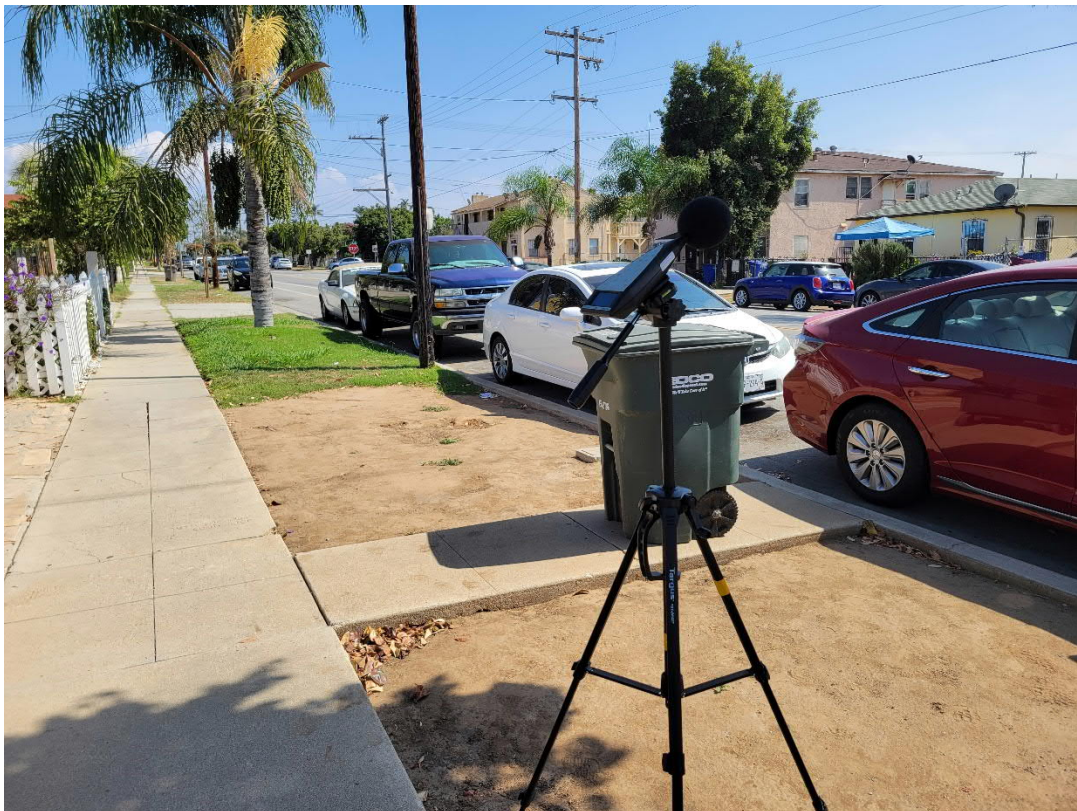
Site 2



Site 3



Site 4



Site 6



Site 7



Site 8



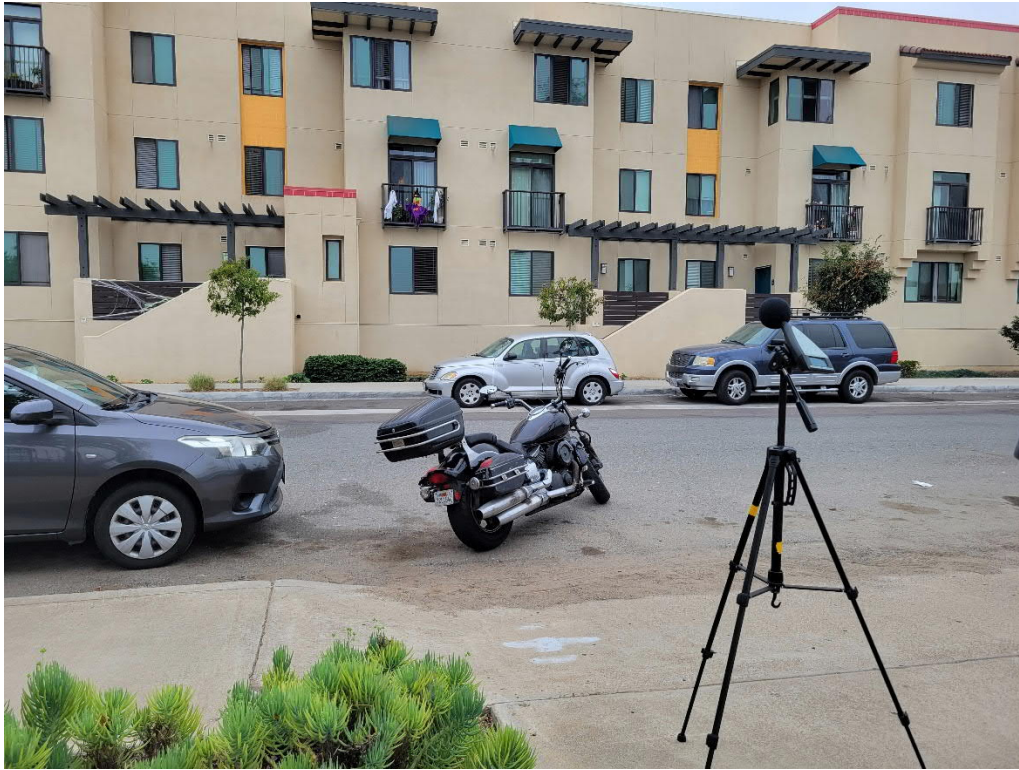
Site 9



Site 10



Site 11



Site 12

