

California Agricultural
Land Evaluation and Site Assessment Model
Calculation Tables and Zone of Influence Map

**Table 1A.
Land Evaluation Worksheet**

**Land Capability Classification (LCC)
and Storie Index Scores**

A	B	C	D	E	F	G	H
Soil Map Unit	Project Acres	Proportion of Project Area	LCC	LCC Rating	LCC Score	Storie Index	Storie Index Score
105	0.1	0.9 %	4w	40	0.36	31	0.28
165	3.0	99.1%	3s	60	59.5	100	99.1
Totals	3.1	(Must Sum to 1.0)		LCC Total	59.9	Storie Index Total	99.38

**Table 1B.
Site Assessment Worksheet 1.**

Project Size Score

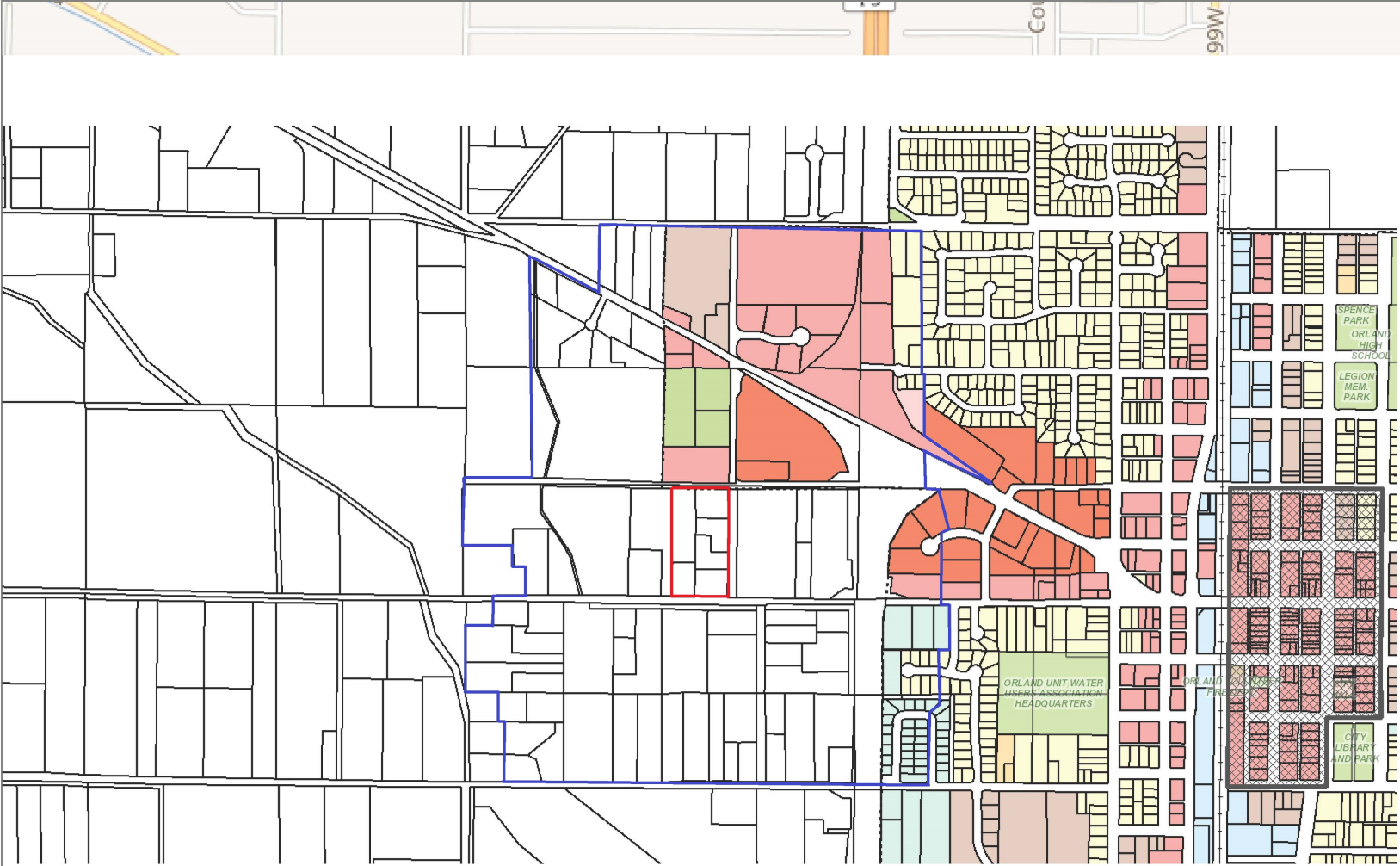
	I	J	K
	LCC Class I - II	LCC Class III	LCC Class IV - VIII
			0
		0	
Total Acres		3.0	0.1
Project Size Scores		0	0
Highest Project Size Score		0	

Table 4. Site Assessment Worksheet 2. - Water Resources Availability

A	B	C	D	E
Project Portion	Water Source	Proportion of Project Area	Water Availability Score	Weighted Availability Score (C x D)
1	Irr. Water District	0.9%	90	0.81
2	Irr. Water District	99.1%	90	89.2
3				
4				
5				
6				
		(Must Sum to 1.0)	Total Water Resource Score	90.0

Table 8. Final LESA Scoresheet

A Factor Name	B Factor Rating (0-100 points)	X	C Factor Weighting (Total = 1.00)	=	D Weighted Factor Rating
<u>Land Evaluation</u>					
1. Land Capability Classification	<Line 1> <u>59.9</u>	X	0.25	=	<u>15.0</u>
2. Storie Index Rating	<Line 2> <u>99.4</u>	X	0.25	=	<u>25.9</u>
<u>Site Assessment</u>					
1. Project Size	<Line 3> <u>0</u>	X	0.15	=	<u>0</u>
2. Water Resource Availability	<Line 4> <u>90</u>	X	0.15	=	<u>13.5</u>
3. Surrounding Agricultural Lands	<Line 5> <u>0.1</u>	X	0.15	=	<u>0</u>
4. Protected Resource Lands	<Line 6> <u>0</u>	X	0.05	=	<u>0</u>
Total LESA Score (sum of weighted factor ratings)					<Line 7> <u>54.4</u>



- Address
- ⋯ City Limits
- ⊠ Downtown Area/Special Parking
- ▭ Places
- ▭ Parcels
- + Railroad
- Zoning Designation
- C-1 - Neighborhood Commercial
- C-2 - Community Commercial
- C-H - Highway Service Commercial
- M-H - Heavy Industrial
- M-L - Light Industrial
- MU - Mixed Use
- O-S - Open Space
- P-D - Planned Development
- P-F - Public Facilities
- R-1 - Residential One-Family
- R-2 - Residential Two-Family
- R-3 - Residential Multiple Family
- R-E - Residential Estates

— Rectangle A = 6.9 acres

— Rectangle B = 257.5 acres

Zone of Influence: 257.5 acres - 6.9 acres = 250.6 acres

Producing Ag land within ZOI = 25.1 acres

Percentage of Ag land in ZOI = 10.0%