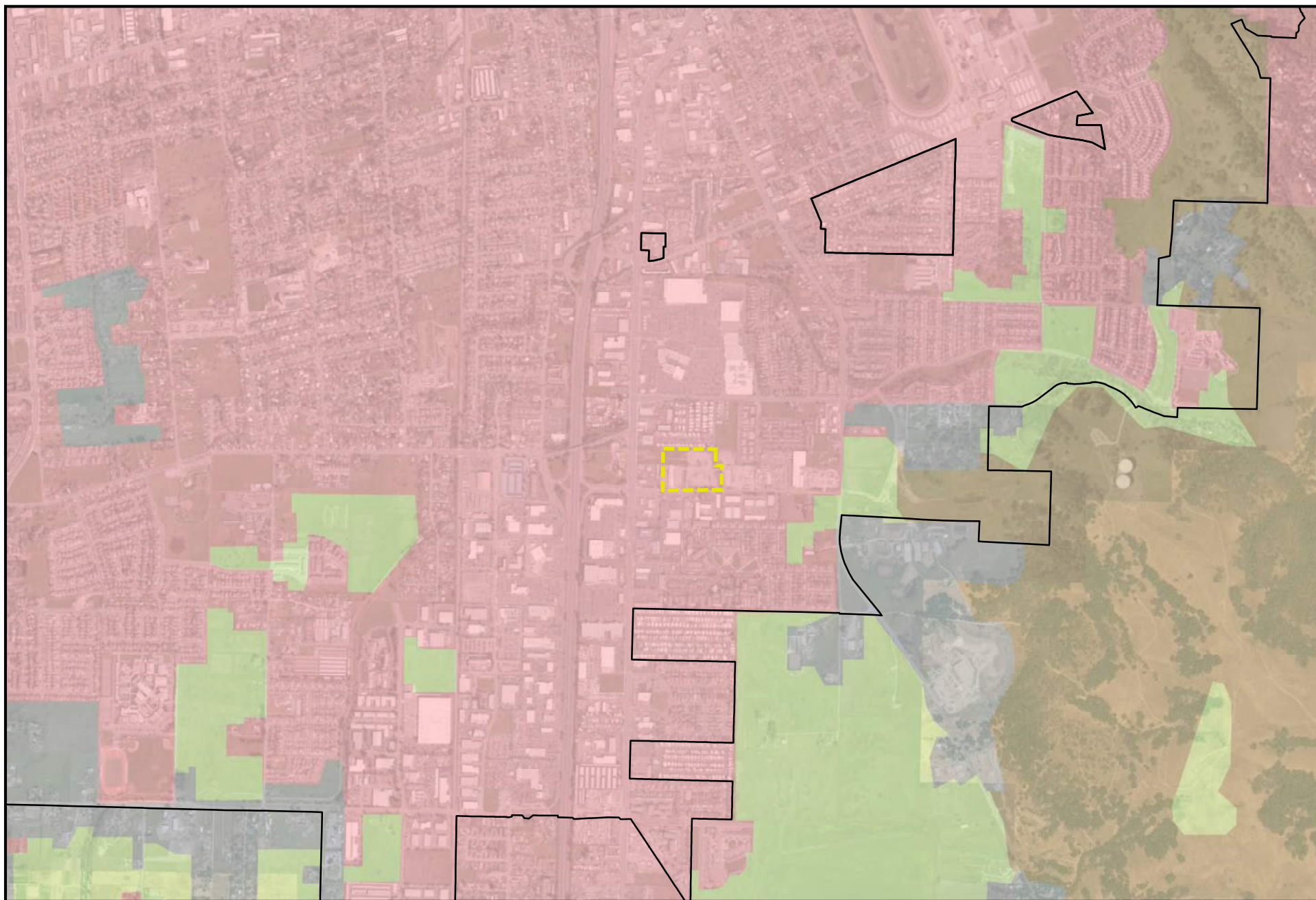
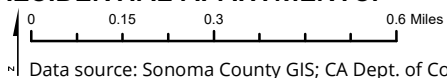


FIGURE B-1



### YOLANDA MULTI-FAMILY RESIDENTIAL APARTMENTS: IMPORTANT FARMLAND



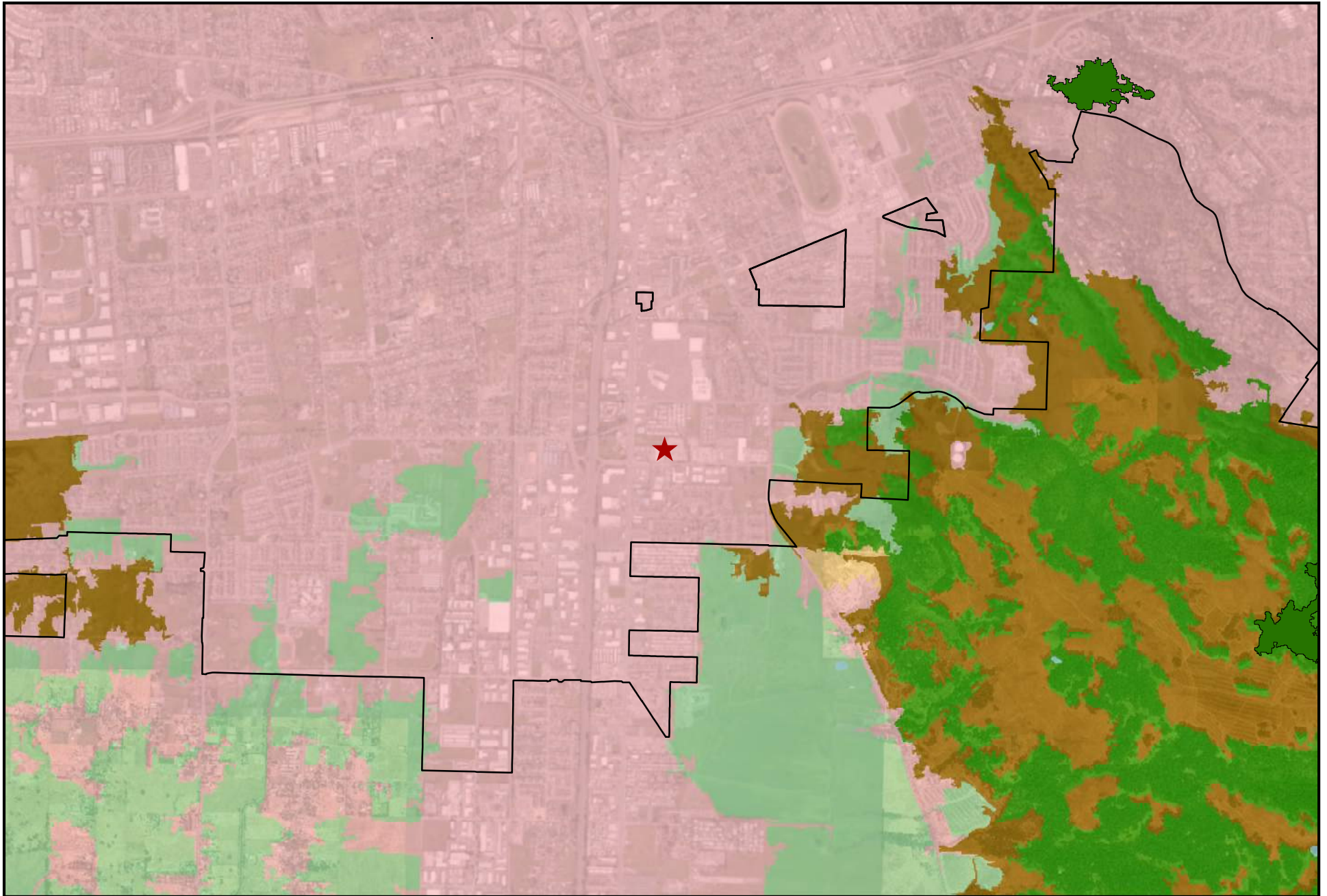
Data source: Sonoma County GIS; CA Dept. of Conservation 2014

- FARMLAND OF LOCAL IMPORTANCE (L)
- GRAZING LAND (G)
- URBAN AND BUILT-UP LAND (D)
- OTHER LAND (X)

- PROJECT SITE
- CITY OF SANTA ROSA



FIGURE B-2



**YOLANDA MULTI-FAMILY RESIDENTIAL APARTMENTS:  
LAND COVER CLASSIFICATION**

0 0.225 0.45 0.9 Miles

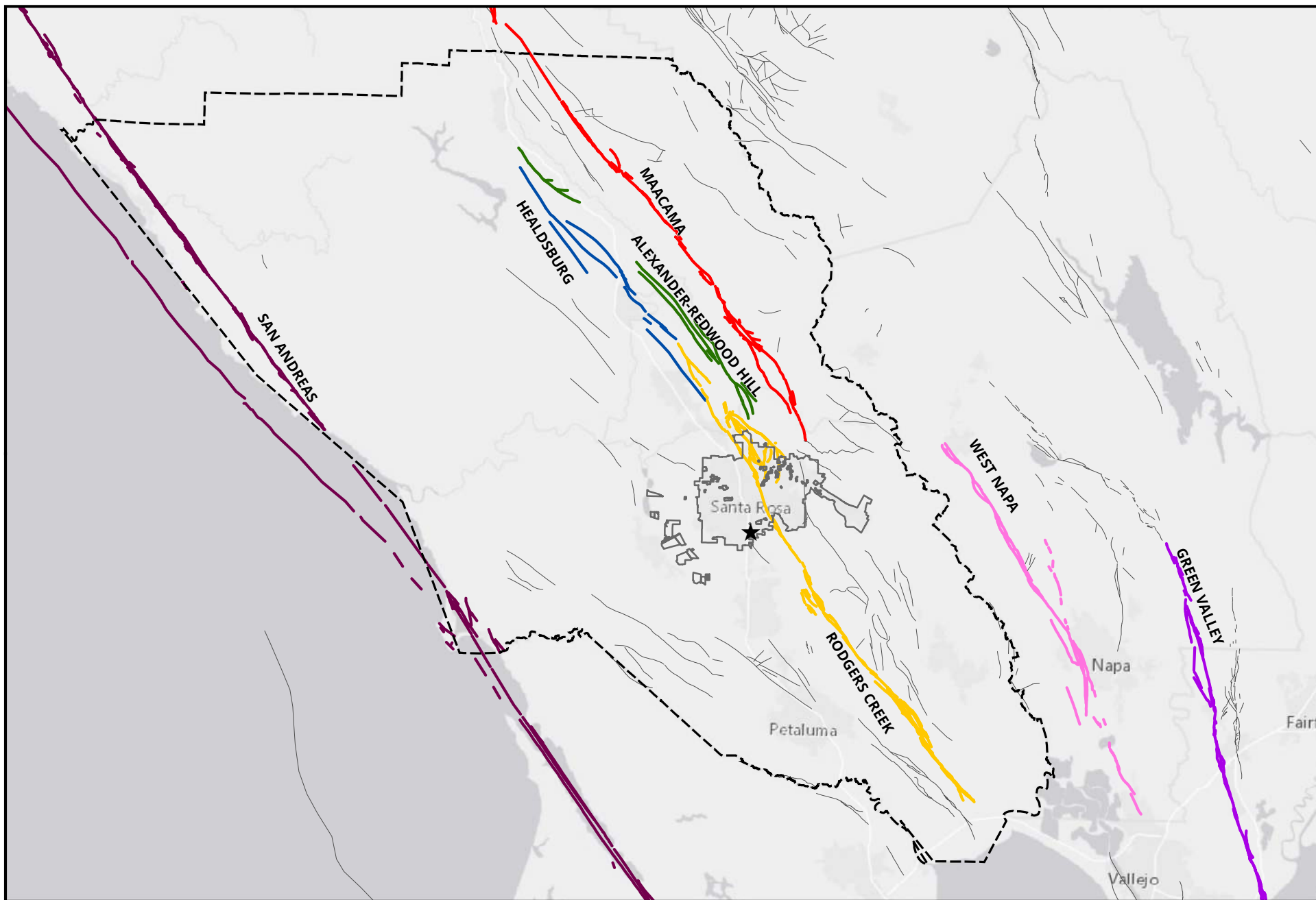
Data source: Sonoma County GIS; USDA, Forest Service, 2007;  
ESRI Basemap

- FOREST LAND
- AGRICULTURAL LAND
- RANGELAND
- BARREN LAND
- URBAN OR BUILT-UP LAND
- WATER
- PRODUCTIVE FOREST SITE
- CITY OF SANTA ROSA
- PROJECT SITE

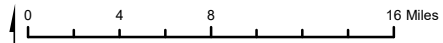




**FIGURE B-3**



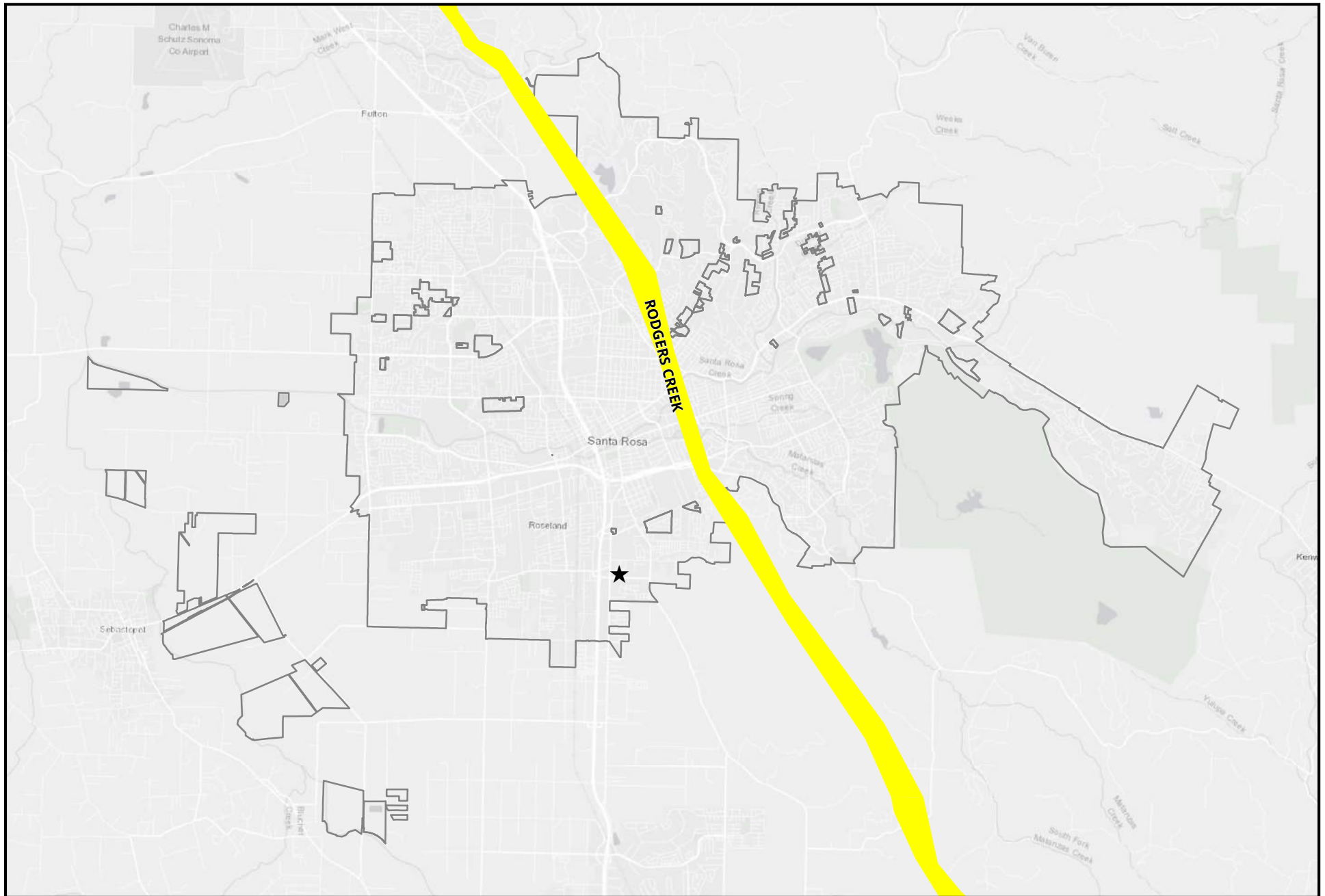
**YOLANDA MULTI-FAMILY RESIDENTIAL PROJECT: FAULTS**



Data source: Sonoma County GIS; USGS, CA Geological Survey, 2006; ESRI basemap

- OTHER QUATERNARY FAULTS
- MAACAMA FAULT
- CITY OF SANTA ROSA
- ALEXANDER-REDWOOD HILL FAULT
- RODGERS CREEK FAULT
- SONOMA COUNTY
- GREEN VALLEY FAULT
- SAN ANDREAS FAULT
- ★ PROJECT SITE
- HEALDSBURG FAULT
- WEST NAPA FAULT





**YOLANDA MULTI-FAMILY RESIDENTIAL APARTMENTS:  
ALQUIST-PRIOLO FAULT ZONES**

0 0.75 1.5 3 Miles

Data source: Sonoma County GIS; Dept. of Conservation, CA Geological Survey; ESRI basemap




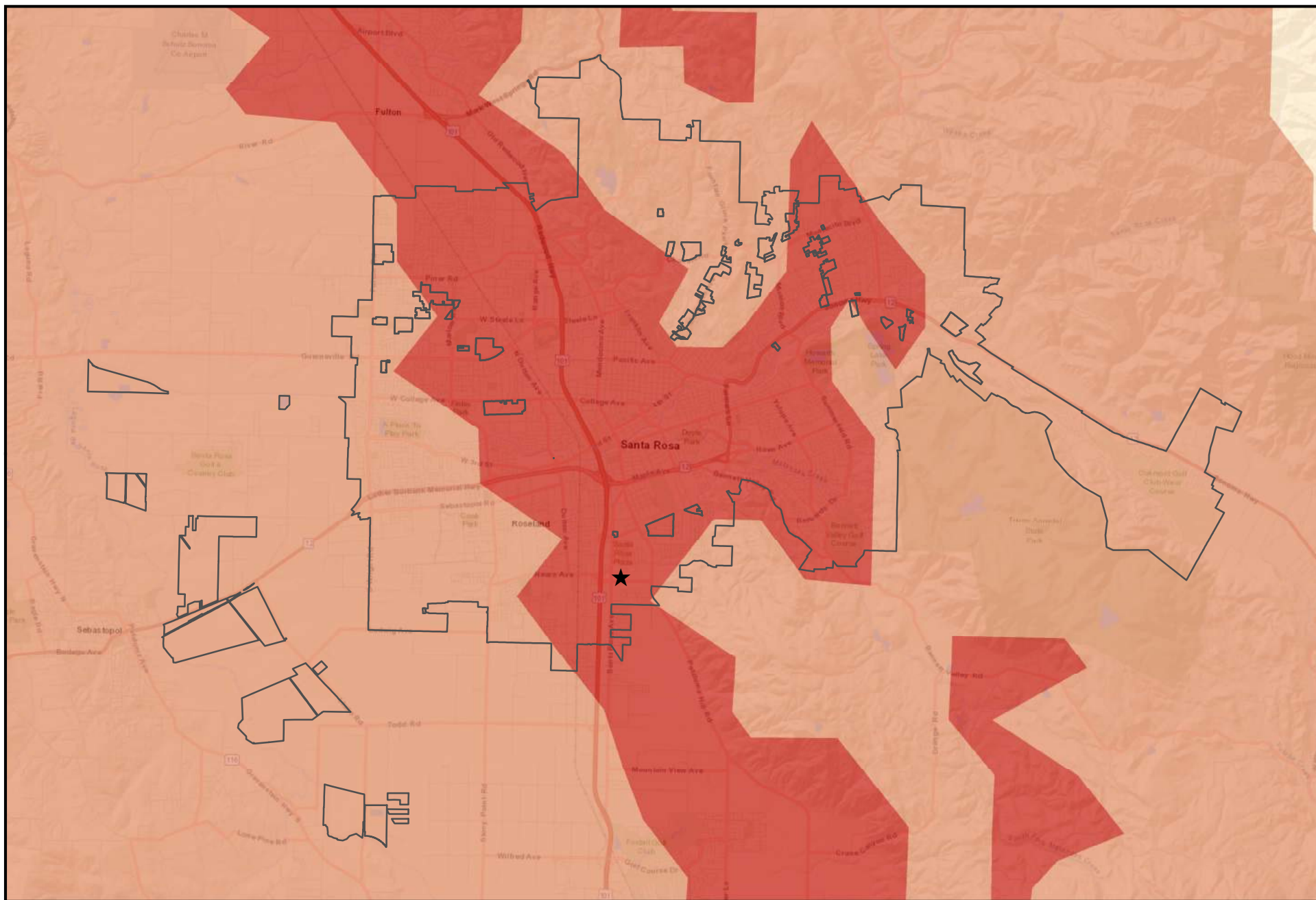
-  ALQUIST-PRIOLO FAULT ZONES
-  CITY OF SANTA ROSA
-  PROJECT SITE



FIGURE B-5



# YOLANDA MULTI-FAMILY RESIDENTIAL APARTMENTS: SHAKING HAZARD

0 0.75 1.5 3 Miles

Data source: Sonoma County GIS; Association of Bay Area Governments; CIGN; ESRI Basemap

### MODIFIED MERCALLI INTENSITY MEASURE

- 7 - STRONG
- 8 - VERY STRONG
- 9 - VIOLENT

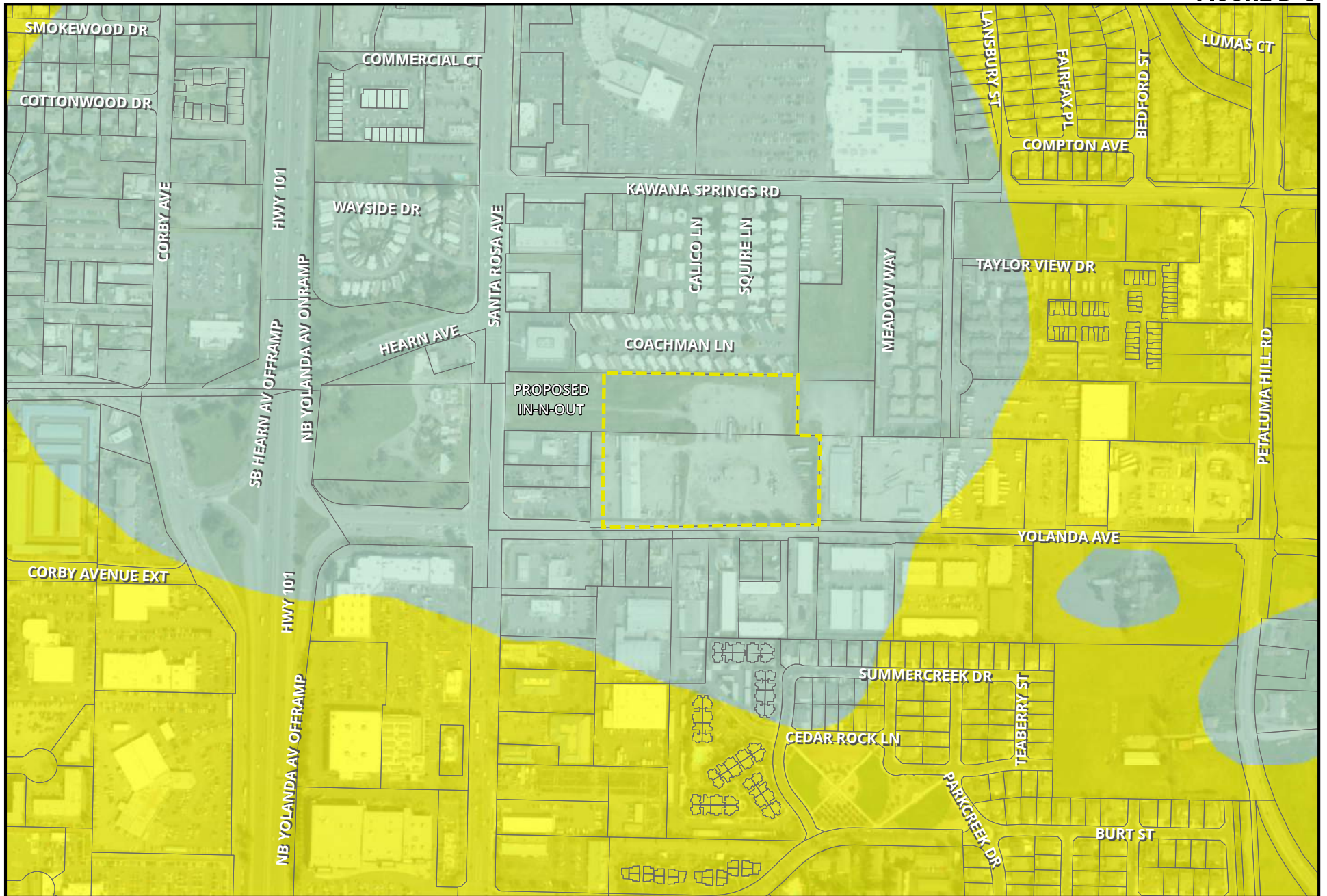
CITY OF SANTA ROSA

PROJECT SITE

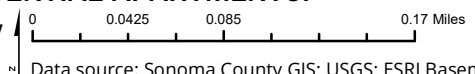




**FIGURE B-6**



**YOLANDA MULTI-FAMILY RESIDENTIAL APARTMENTS:  
LIQUEFACTION SUSCEPTIBILITY**

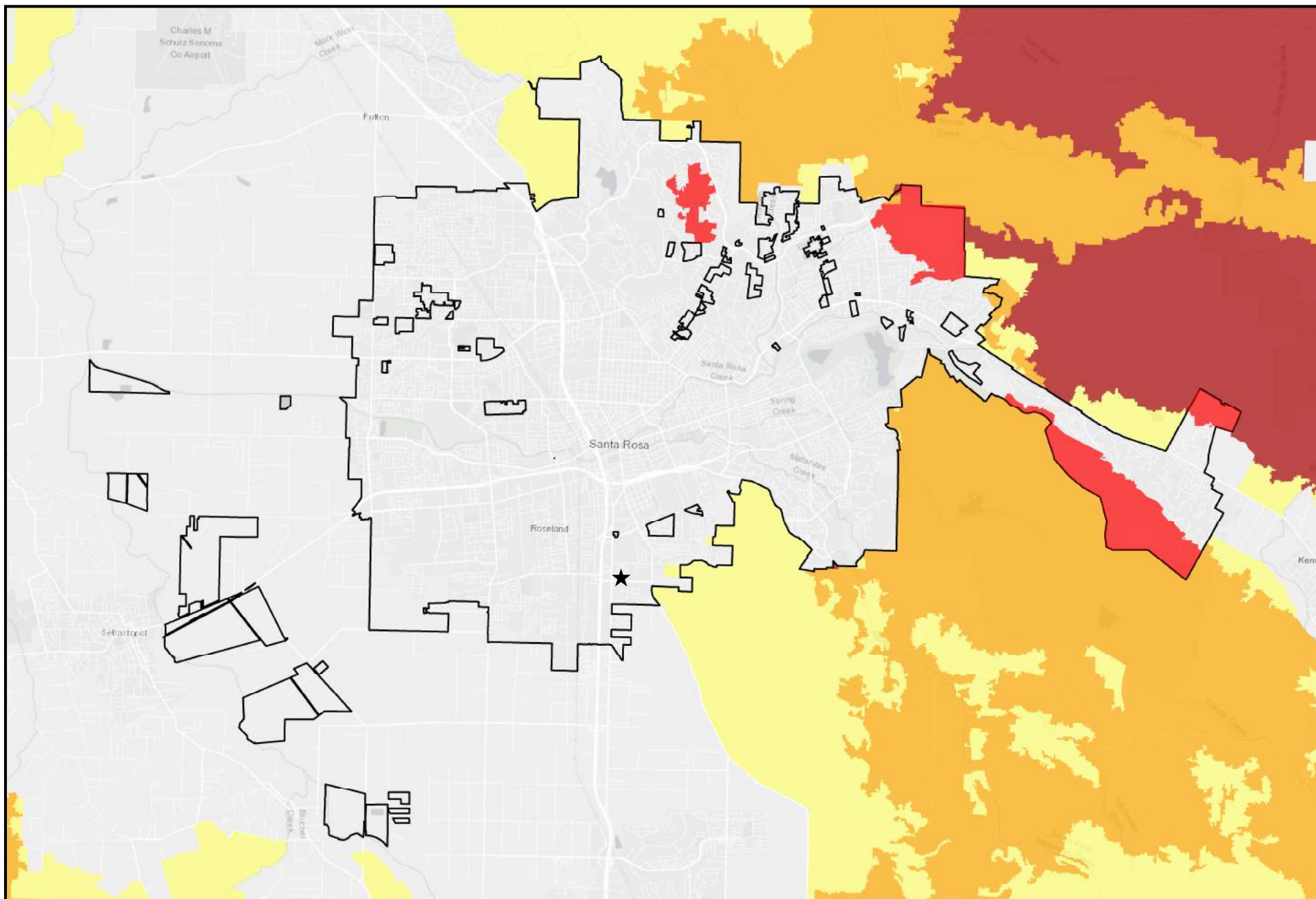


Data source: Sonoma County GIS; USGS; ESRI Basemap

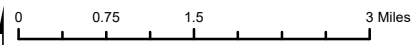
- VERY LOW SUSCEPTIBILITY
- MODERATE SUSCEPTIBILITY
- PROJECT SITE



**FIGURE B-7**



**YOLANDA MULTI-FAMILY RESIDENTIAL APARTMENTS:  
FIRE HAZARD SEVERITY ZONES**



Data source: Sonoma County GIS;  
CA Dept. of Forestry and Fire Protection; ESRI Basemap

**FHSZ IN STATE RESPONSIBILITY AREAS**

- MODERATE
- HIGH
- VERY HIGH

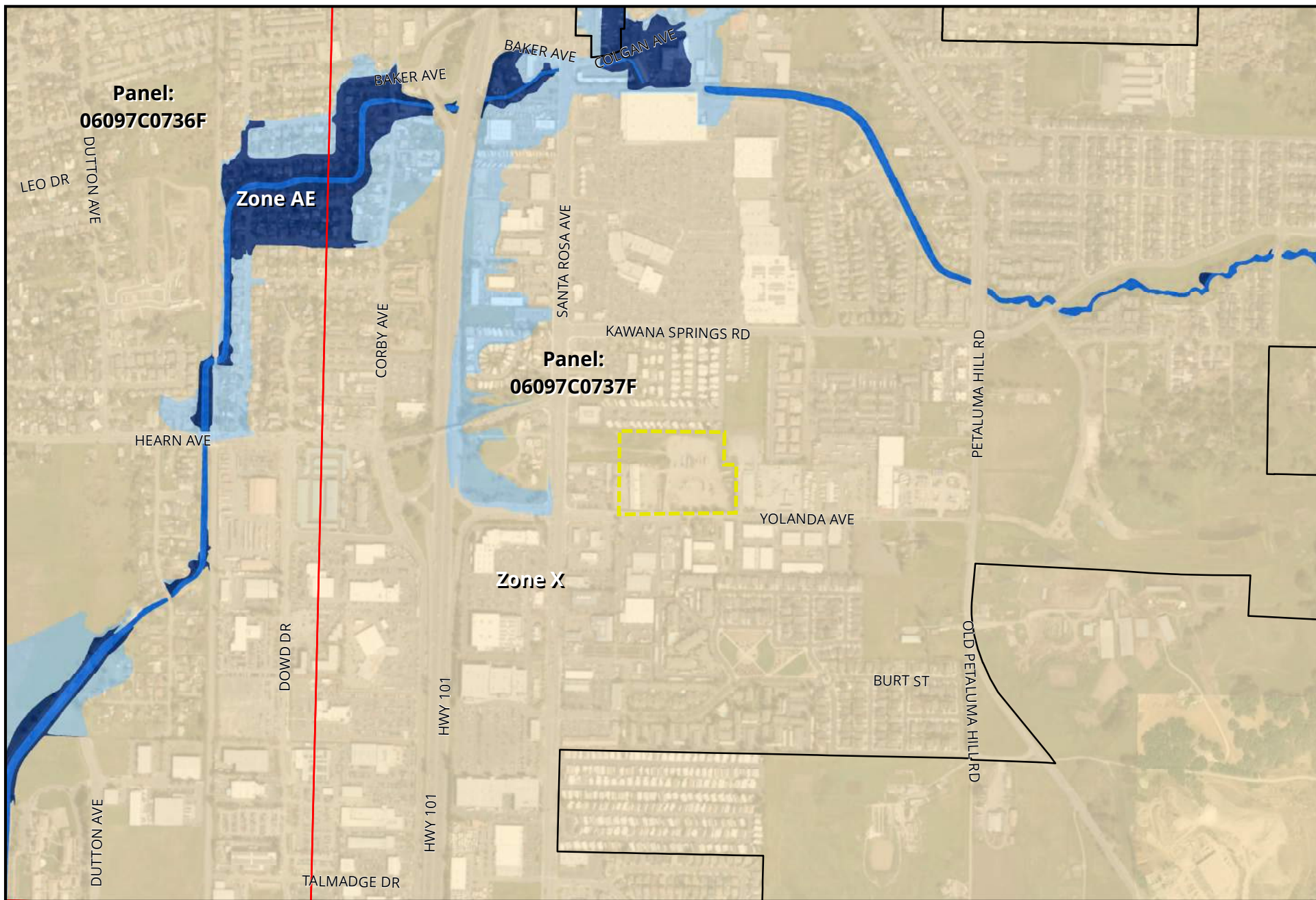
**VHFS IN LOCAL RESPONSIBILITY AREA**

- VHFS IN LOCAL RESPONSIBILITY AREA
- CITY OF SANTA ROSA
- ★ PROJECT SITE

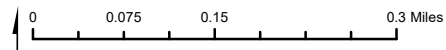




**FIGURE B-8**



**YOLANDA MULTI-FAMILY RESIDENTIAL APARTMENTS:  
FEMA NATIONAL FLOOD HAZARD**



Data source: Sonoma County GIS; FEMA 2017; ESRI Basemap

- 100 YEAR FLOODPLAIN (AE)
- FLOODWAY (AE)
- 500 YEAR FLOODPLAIN (X)
- AREA OF MINIMAL FLOOD HAZARD (X)

- FIRM PANELS
- CITY OF SANTA ROSA
- PROJECT SITE

