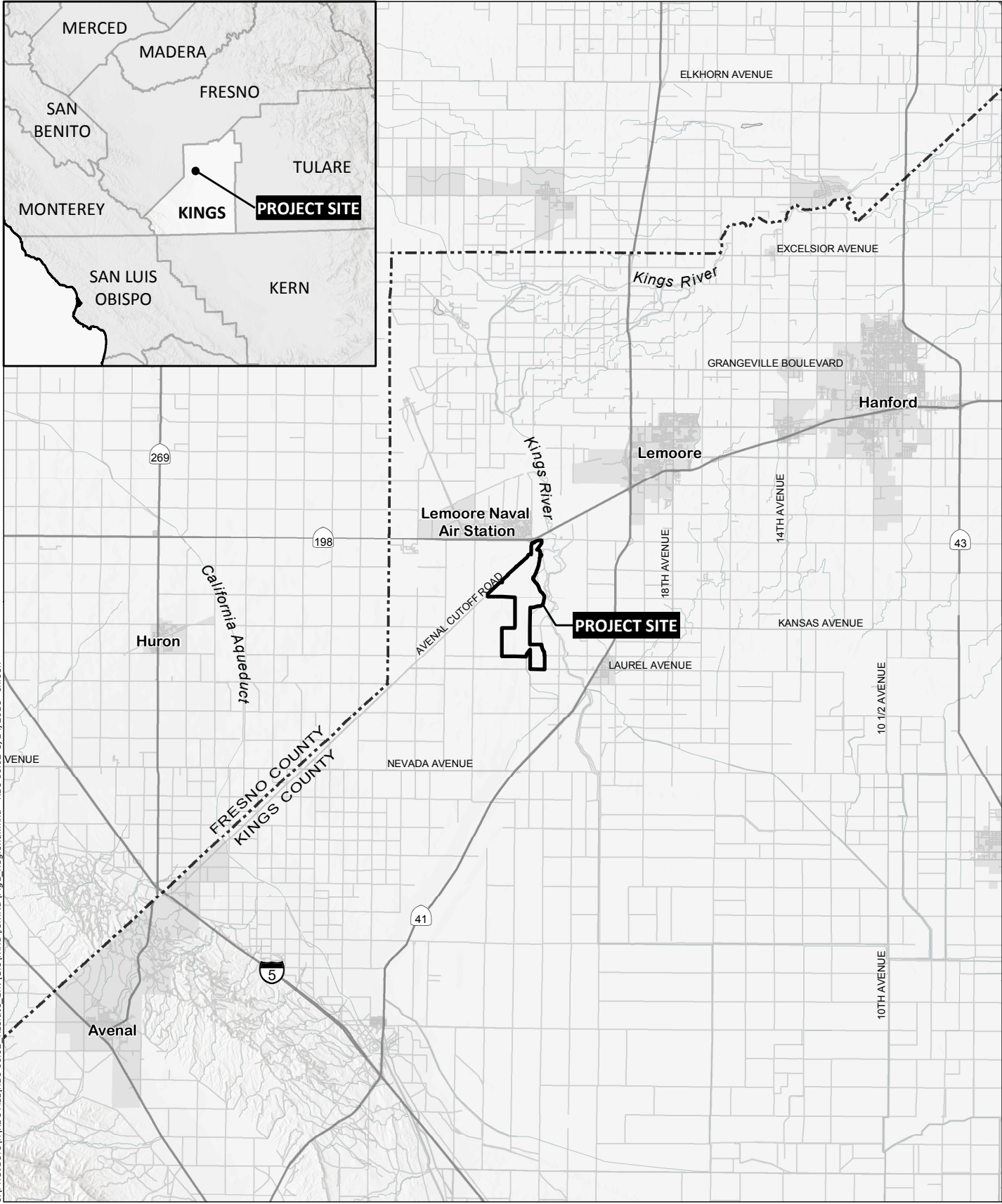


# Appendix A

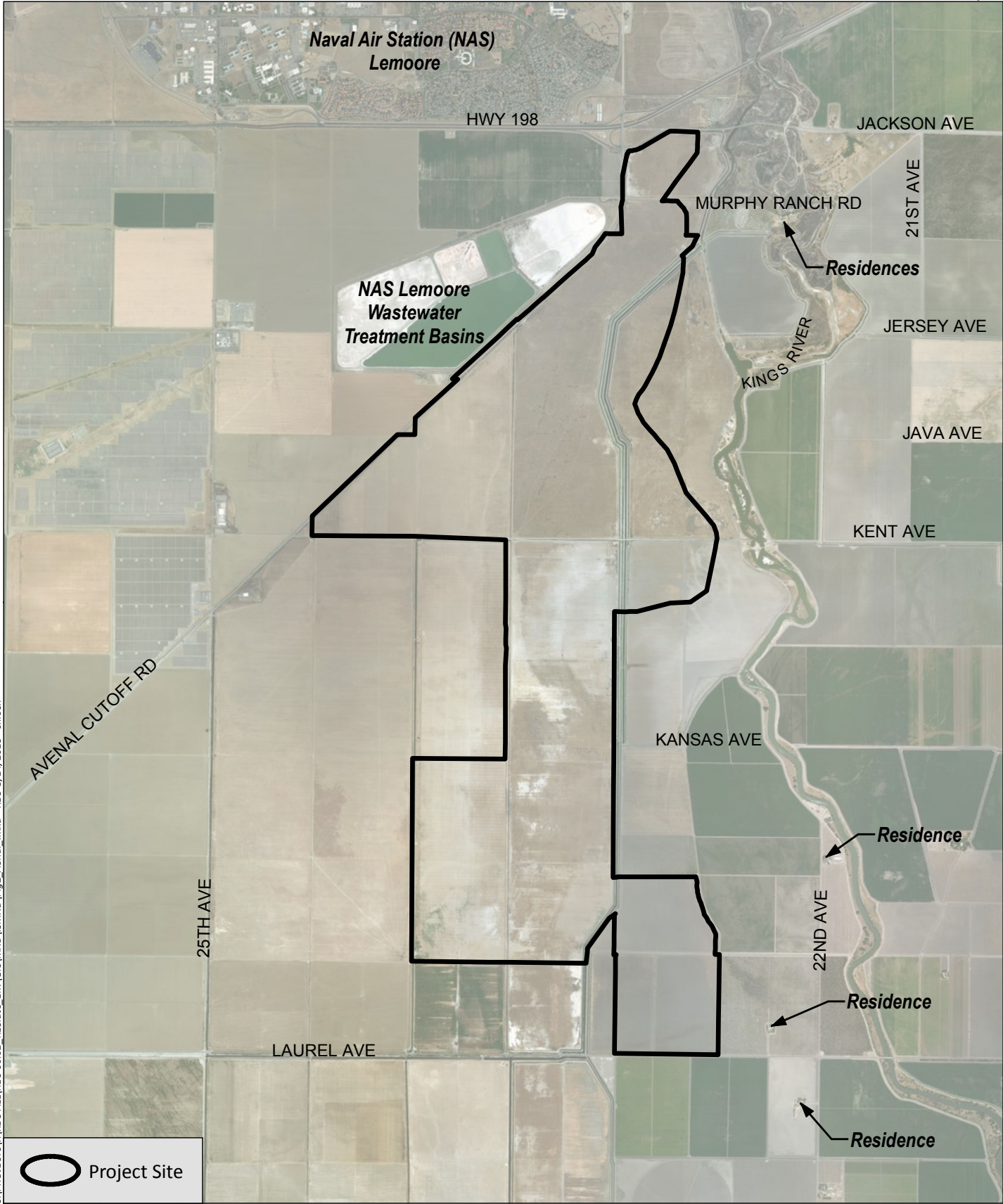
---

Figures



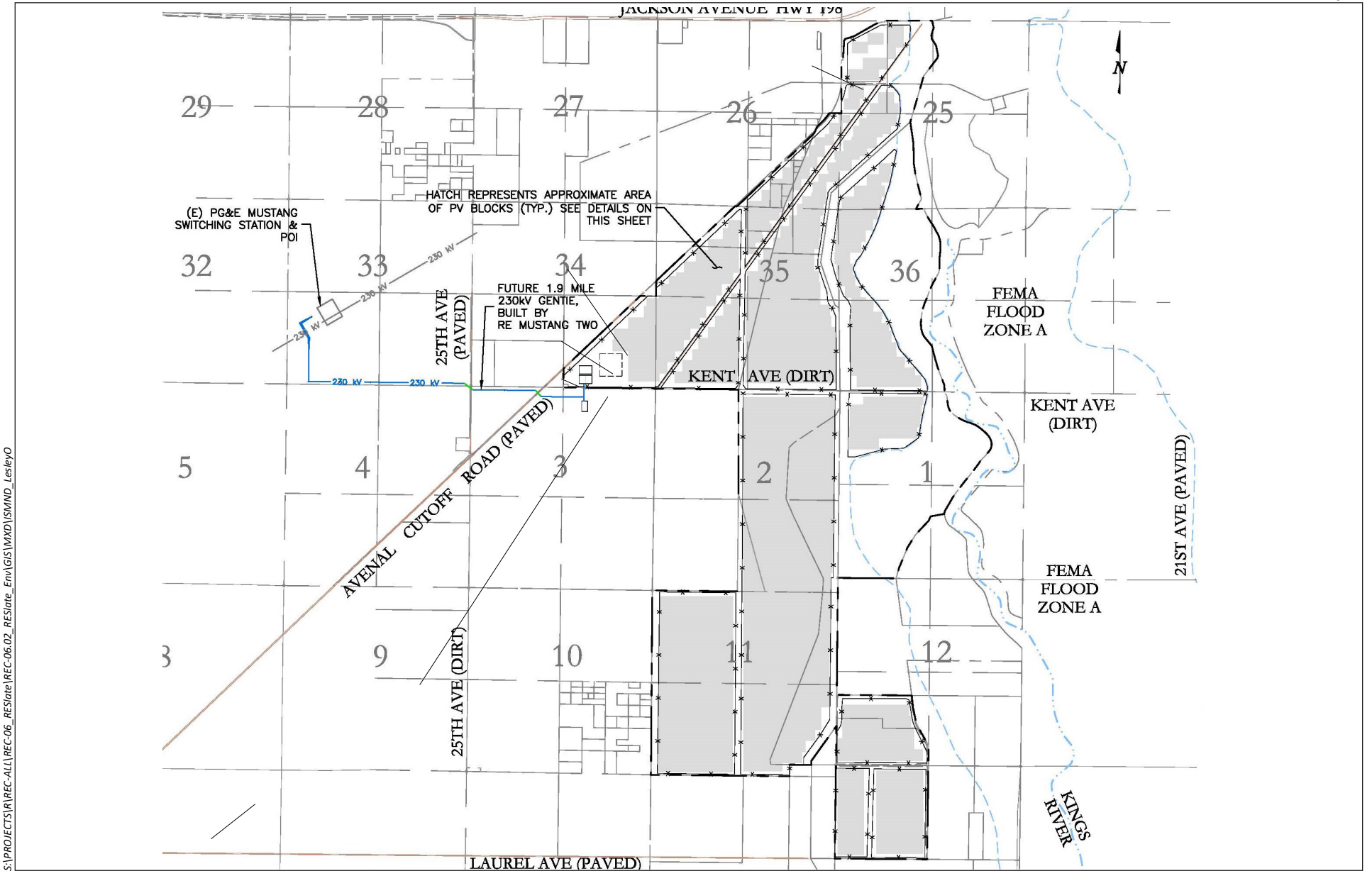
S:\PROJECTS\REC-ALL\REC-06.02\_RE\State\_Env\GIS\WKD\IS\WMD\Fig1\_Regional.mxd REC-06.02 5/14/2018 - chloeh

Source: Base Map Layers (Esri, USGS,NGA, NASA)



S:\PROJECTS\REC-ALL\REC-06-02\_RE Slate Env\GIS\WKD\IS\MD\Fig2\_Aerial.mxd REC 5/14/2018 - chloeh

Source: Base Map Layers (Esri)

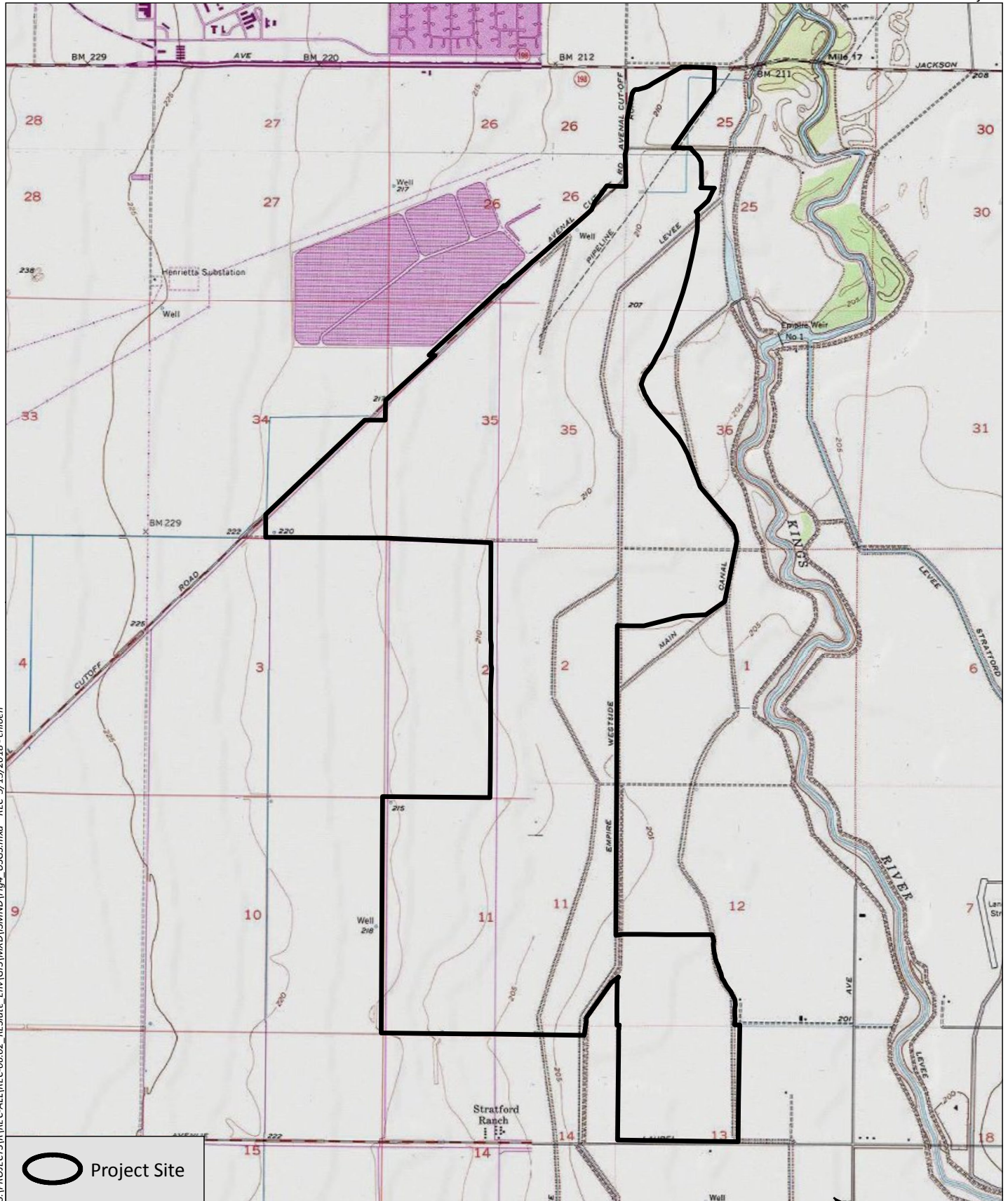


S:\PROJECTS\REC-ALL\REC-06\_REState\REC-06.02\_REState\_Env\GIS\WXD\SMND\_Lesley0



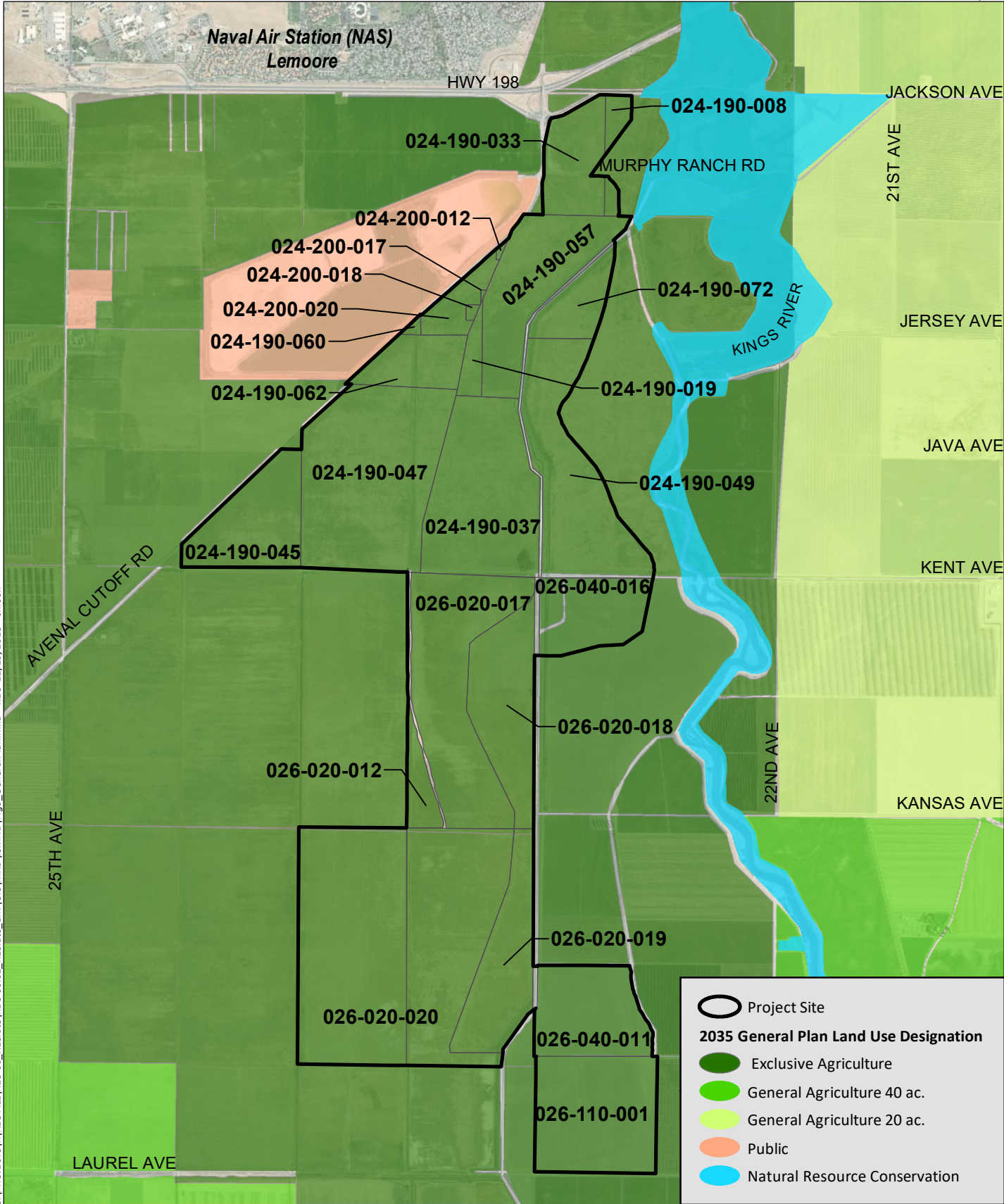
Source: Recurrent Energy 2018





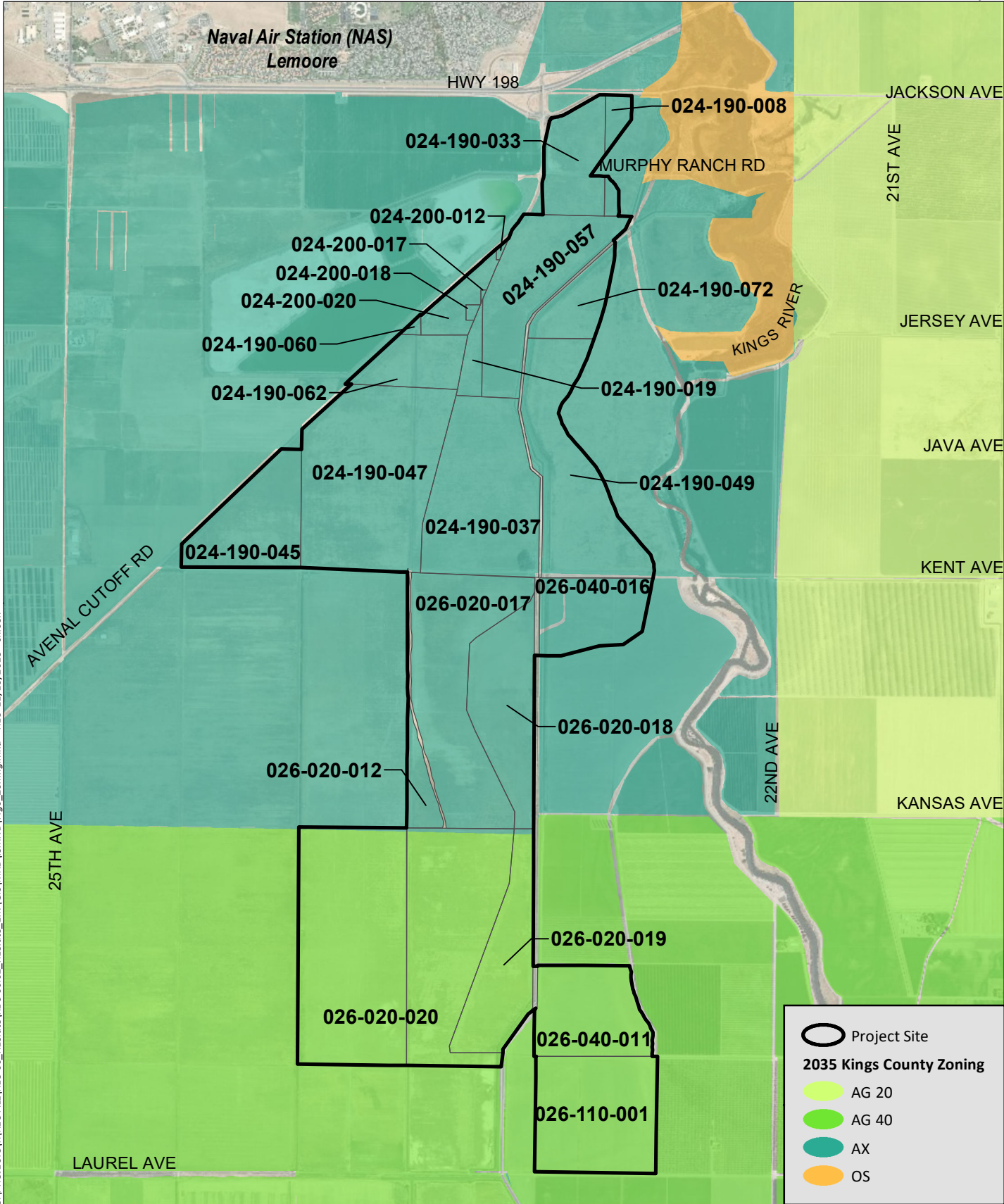
S:\PROJECTS\REC-ALL\REC-06-02\_RE\_Slate\_Env\GIS\WXD\IS\MND\Fig4\_USGS.mxd REC 5/15/2018 - chloeh

Source: Base Map Layers (National Geographic Society)



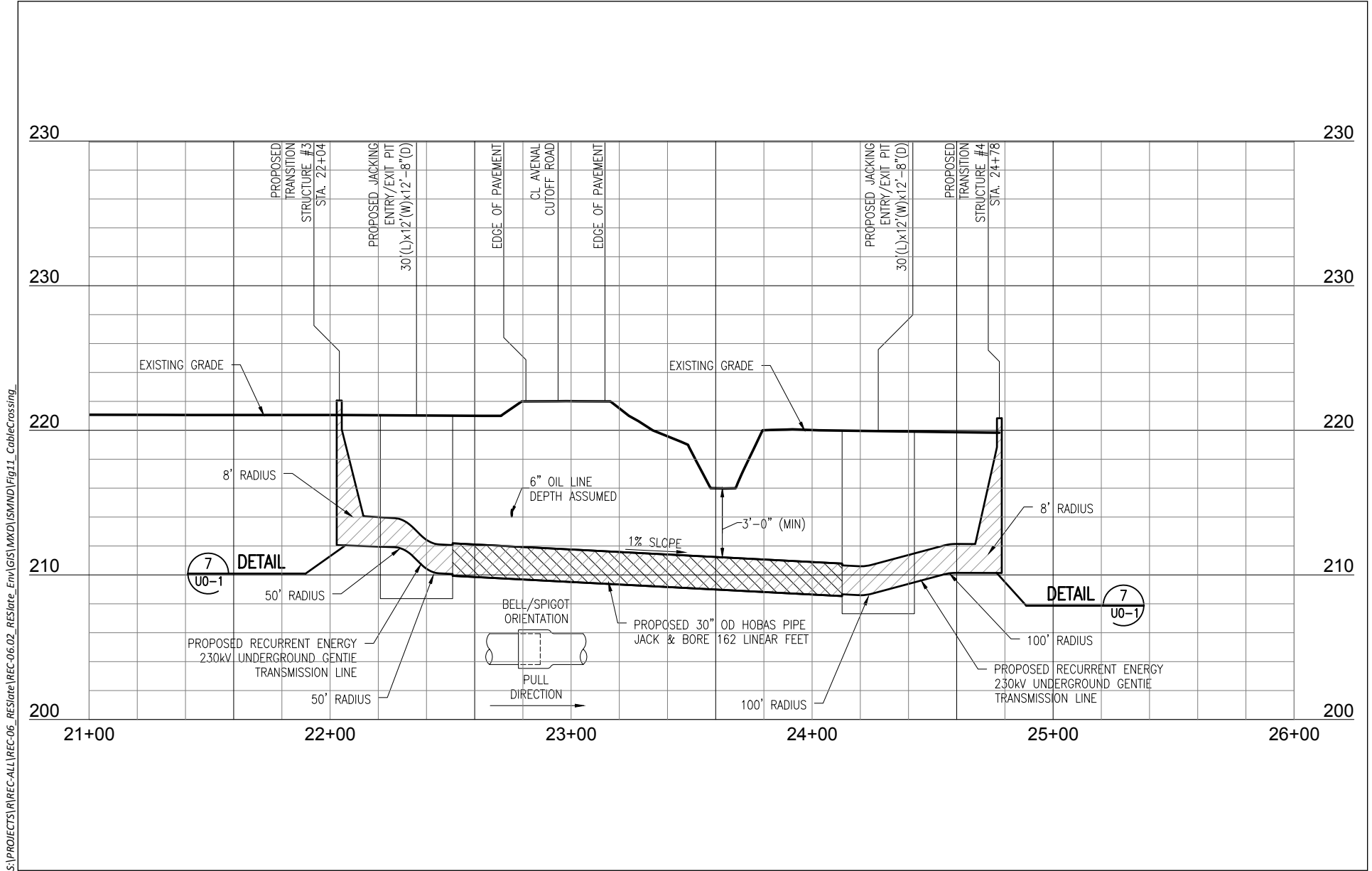
Sources: Base Map (Esri), Kings County 2035 General Plan and Zoning, Kings County APN data





S:\PROJECTS\I\REC-ALL\REC-06\_REC-06.02\_RE\State\_Env\GIS\MXD\ISMNDI\Fig6\_Zoning.mxd REC 11/19/2018 - chloeh

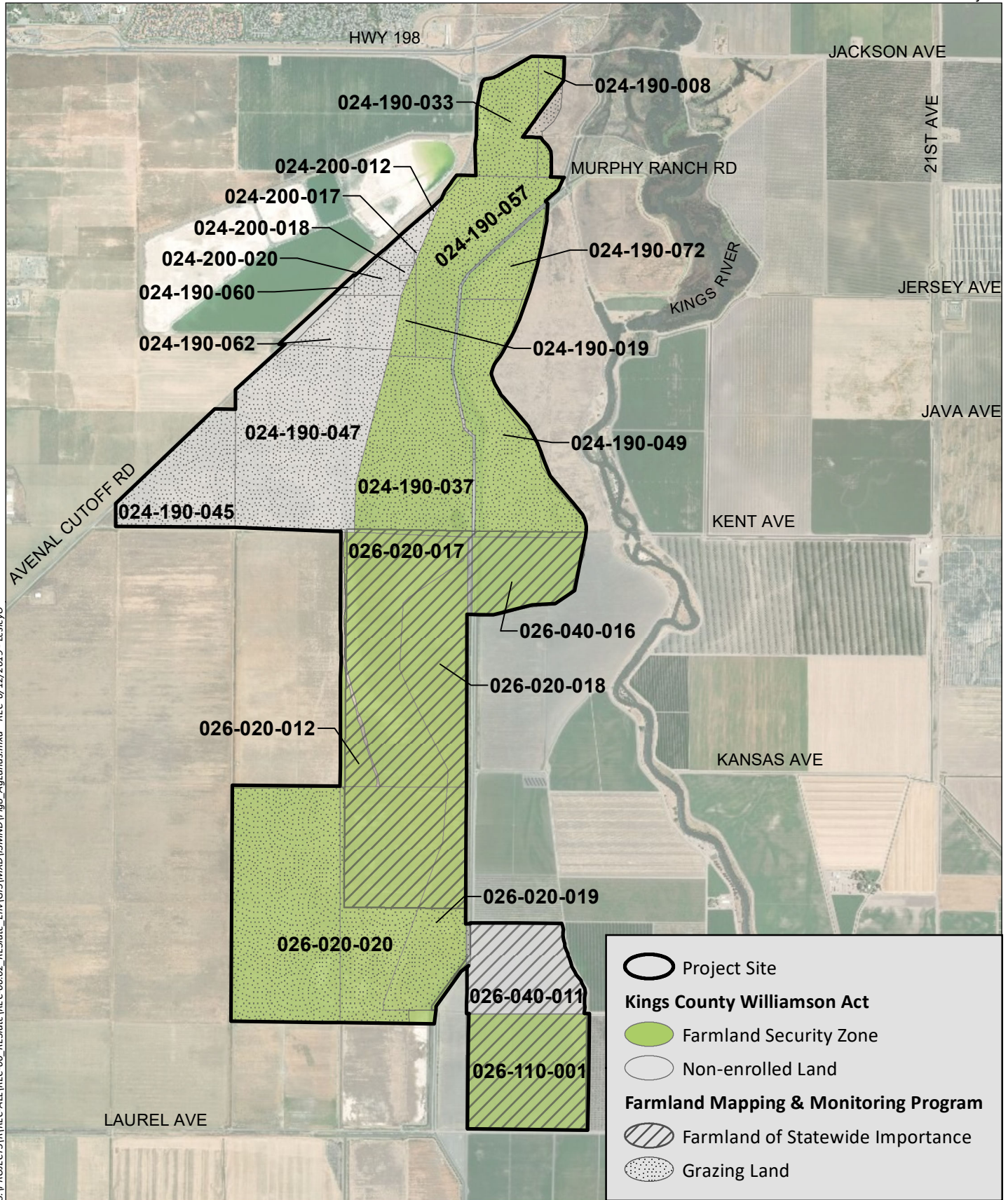
Sources: Base Map (Esri), Kings County 2035 General Plan and Zoning, Kings County APN data



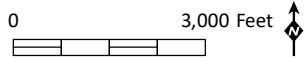
S:\PROJECTS\1\REC-ALL\REC-06\_REC-06.02\_REC-06\_Env\GIS\MXD\SMND\Fig11\_CableCrossing\_

Source: Recurrent Energy 2018





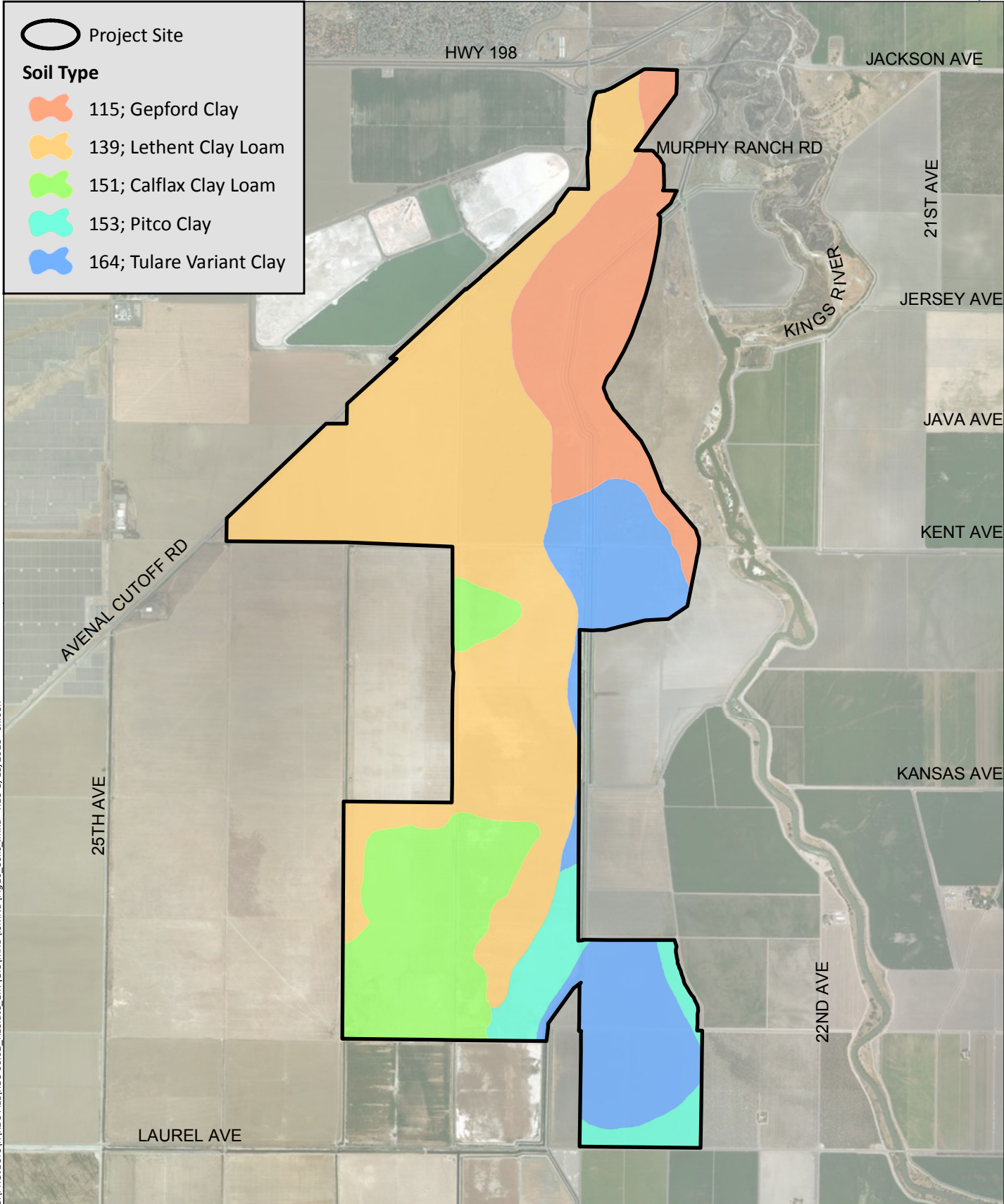
S:\PROJECTS\REC-ALL\REC-06\_REC-Slate\_Env\GIS\MXD\IS\MND\Fig8\_Aglands.mxd REC 6/12/2019 - Lesley O



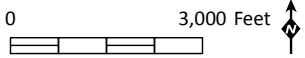
Source: Base Map Layers (Esri), Kings County 2035 General Plan and Zoning

- Project Site
- Kings County Williamson Act**
- Farmland Security Zone
- Non-enrolled Land
- Farmland Mapping & Monitoring Program**
- Farmland of Statewide Importance
- Grazing Land



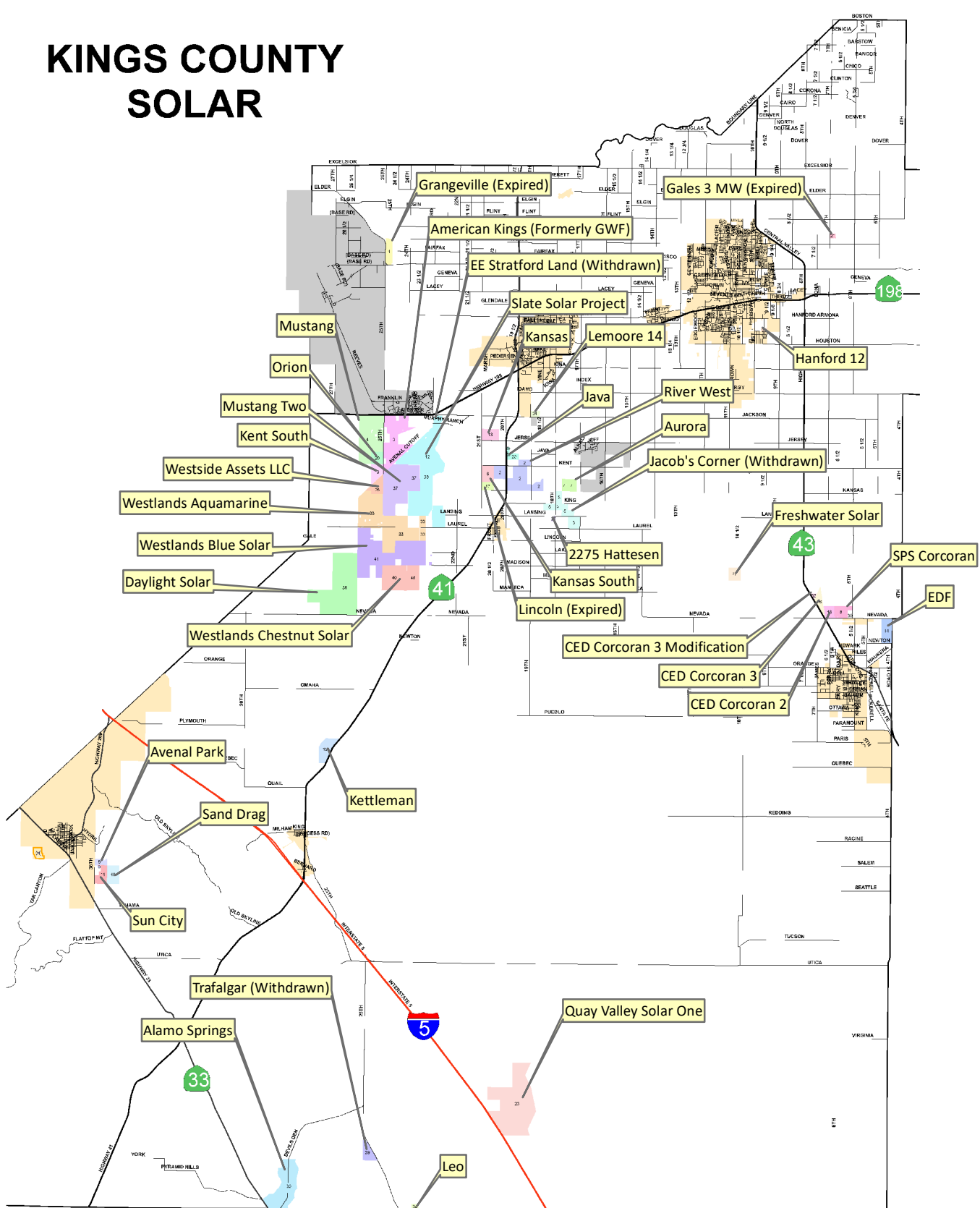


S:\PROJECTS\REC-ALL\REC-06.02\_RESlate\_Env\GIS\WKD\IS\WIND\Fig10\_Soils\_mxd REC 5/15/2018 - chloeh



Source: Base Map Layers (Esri, USDA, USGS, NRCS)

# KINGS COUNTY SOLAR



S:\PROJECTS\REC-ALL\REC-06\_REState\Env\Figures\Admin\Figures\ISVND\Fig11\_Cumulative\_calouts.mxd Layers 5/31/2019 - lesleyo

Source: Kings County Community Development Agency 2019