

State Center Community College District  
REQUEST FOR PRELIMINARY COMMENT  
Reedley College Performing Arts Center Project

To:

Responsible, Trustee and Interested Agencies  
Interested Persons

From:

State Center Community College District  
1711 Fulton Street, #615  
Fresno, CA 93721

George Cummings  
District Director of Facilities Planning  
Telephone: (559) 243-7191  
Email: george.cummings@scccd.edu

Date: June 20, 2018

**Purpose:** State Center Community College District (SCCCD) is proposing to undertake the Reedley College Performing Arts Center Project (project). The purpose of this Request for Preliminary Comment is to invite responsible, trustee and interested agencies, as well as interested persons, to submit written comments on the potential environmental effects of the project. SCCCD will consider the comments in preparing a California Environmental Quality Act Initial Study for the project and in determining whether to prepare an Environmental Impact Report for the project or to adopt a Negative Declaration or Mitigated Negative Declaration. You will have the opportunity to comment again after you have reviewed the completed environmental documents.

**Comments:** Please send any comments in response to this Request for Preliminary Comment to George Cummings (contact information provided above). **Please submit comments by Wednesday, July 10, 2019.**

**Project Location and Description:**

The project consists of the development of a performing arts center on approximately 4 acres within the northeast portion of the Reedley College campus in the City of Reedley (see Figures 1 and 2). The site is located at the northwest corner of Reed Avenue and the northerly campus access road from Reed Avenue. Most of the project site (approximately 3.2 acres) is currently occupied by an orchard. The site contains a small vacant area (0.8 acres) near the campus access road, which has a number of large mature trees.

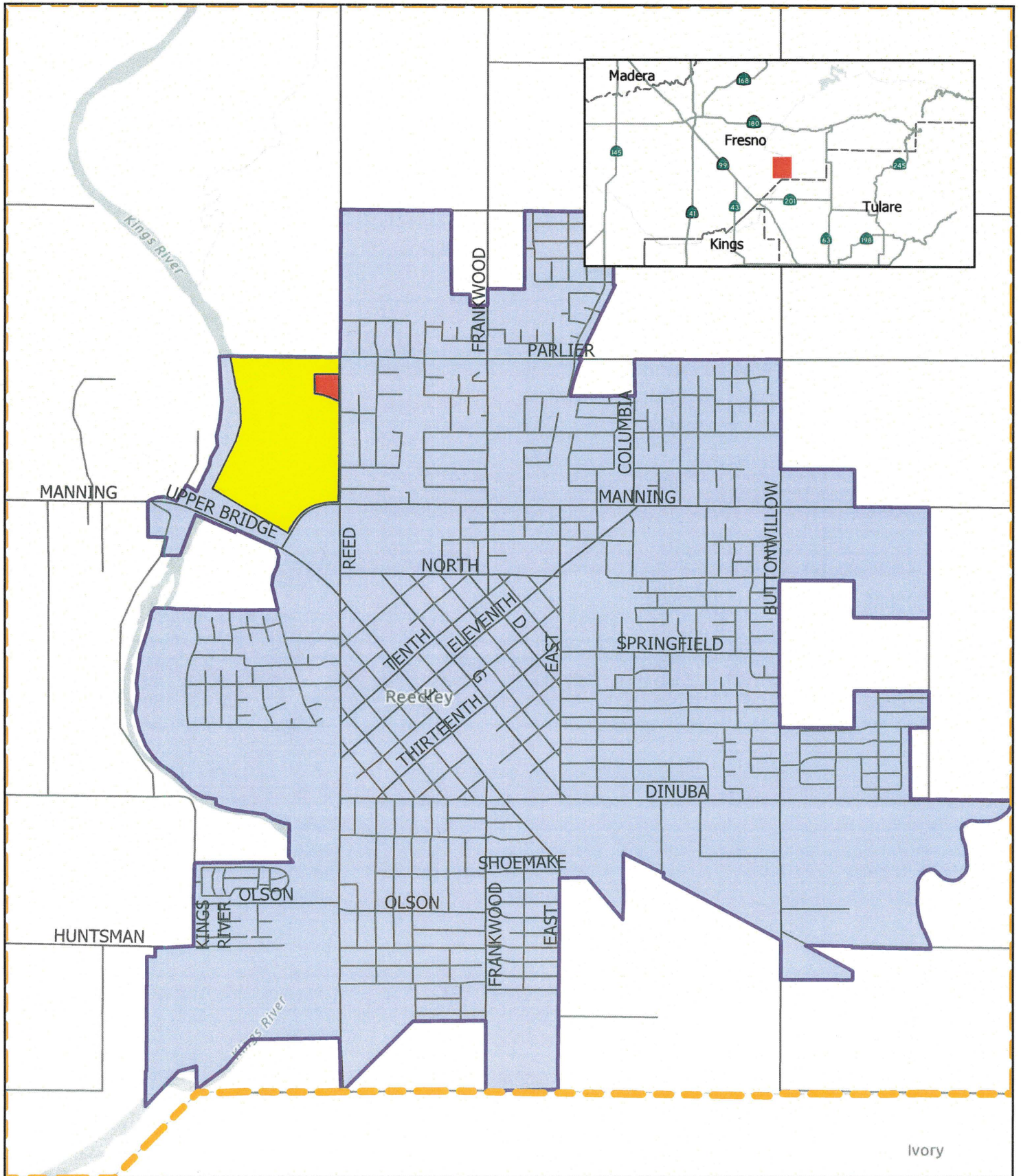
The proposed performing arts center building would include the following facilities: an auditorium with seating for 500-550 patrons; a 1,000 square-foot art gallery; an indoor lobby area configurable to accommodate up to 150 people as a sit-down dinner venue; a concessions area; a green room; a box office; a conference room; restrooms; and miscellaneous areas for storage and equipment. The project also includes an outdoor plaza that would function as a congregational area and may be used as an area for outdoor events and performances; this area would include landscaping, lighting, and possibly public art.

The project is planned to begin construction in early 2021 and be operational by late 2022.

Governor's Office of Planning & Research

JUN 20 2019

STATE CLEARINGHOUSE



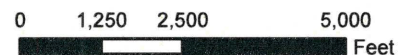
**Project Location**

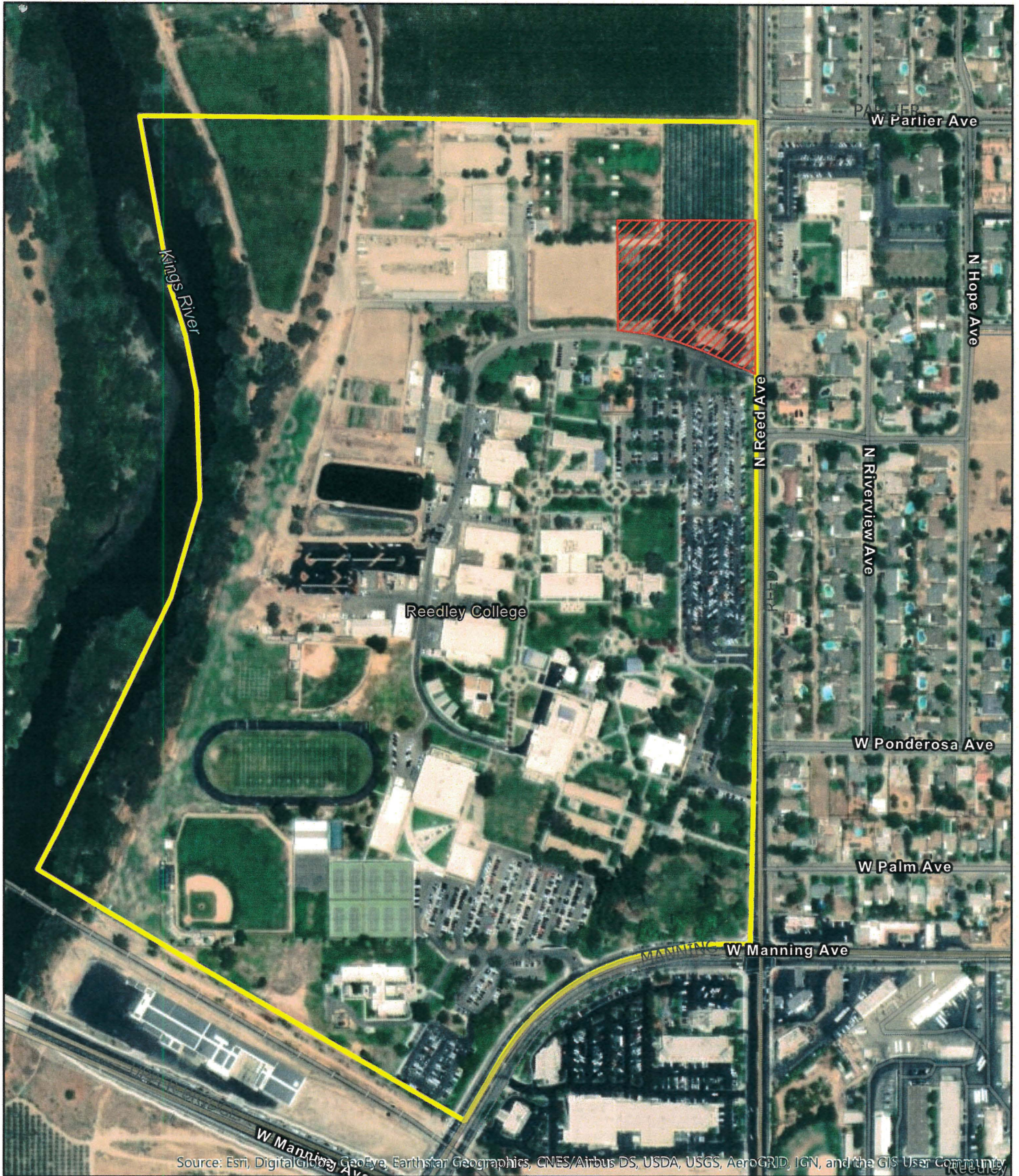
**Figure 1**

Reedley College Performing Arts Center Project  
 State Center Community College District

**ODELL Planning & Research, Inc.**  
 Environmental Planning • School Facility Planning • Demographics

- Reedley College
- City of Reedley
- Project Location
- Fresno County





**Project Site**

Figure 2

Reedley College Performing Arts Center Project  
 State Center Community College District

 Reedley College  Project Location

**ODELL Planning & Research, Inc.**  
 Environmental Planning • School Facility Planning • Demographics

