

A PHASE I CULTURAL RESOURCES SURVEY FOR THE IDI INDIAN AVENUE AND RAMONA EXPRESSWAY PROJECT

PERRIS, CALIFORNIA

APNs 302-060-002, -005, -006, and -038, 302-050-034 and -036

Submitted to:

**City of Perris
Planning and Development
135 North D Street
Perris, California 92570**

Prepared for:

**Steve Hollis
IDI Ramona, LLC
8 Corporate Park, Suite 300
Irvine, California 92606**

Prepared by:

**Andrew J. Garrison and Brian F. Smith
Brian F. Smith and Associates, Inc.
14010 Poway Road, Suite A
Poway, California 92064**



August 23, 2018; Revised February 7, 2019

Archaeological Database Information

Authors: Andrew J. Garrison and Brian F. Smith

Consulting Firm: Brian F. Smith and Associates, Inc.
14010 Poway Road, Suite A
Poway, California 92064
(858) 484-0915

Report Date: August 23, 2018; Revised February 7, 2019

Report Title: A Phase I Cultural Resources Survey for the IDI Indian Avenue and Ramona Expressway Project, Perris, California

Prepared for: Steve Hollis
IDI Ramona, LLC
8 Corporate Park, Suite 300
Irvine, California 92606

Submitted to: City of Perris
Planning and Development
135 North D Street
Perris, California 92570

Submitted by: Brian F. Smith and Associates, Inc.
14010 Poway Road, Suite A
Poway, California 92064

Assessor's Parcel Number(s): 302-060-002, -005, -006, and -038, 302-050-034 and -036

USGS Quadrangle: *Perris, California (7.5 minute)*

Study Area: 24.2-acre industrial site northwest of the intersection of Indian Avenue and the Ramona Expressway and 2.64-acre off-site improvement area

Key Words: USGS *Perris* Quadrangle (7.5 minute); archaeological survey; positive; P-33-028621; no CEQA-significant resources.

I. INTRODUCTION

In response to a requirement by the City of Perris for the environmental assessment of a proposed industrial building site, Brian F. Smith and Associates, Inc. (BFSA) conducted an archaeological survey of the IDI Indian Avenue and Ramona Expressway Project including an off-site driveway improvement area (hereafter referred to as the IDI Project). The proposed 24.2-acre warehouse site is located at the northwest corner of the intersection of Indian Avenue and Ramona Expressway in the city of Perris, Riverside County, California. The 2.64-acre off-site improvement area is located directly west of the intersection of Indian Avenue and Perry Street. The subject property is situated south of March Air Reserve Base, within Assessor's Parcel Numbers (APNs) 302-060-005, -006, and -038, 302-050-034 and -036; the off-site driveway improvement area is within APN 302-060-002. Specifically, the property is located within the previous Rancho San Jacinto Nuevo y Portrero land grant and Section 6, Township 4 South, Range 3 West of the USGS *Perris 7.5'* topographic quadrangle (Attachment B). The project will include the construction of a 428,730-square-foot industrial building with approximately 25,000 square feet of potential office space, associated tractor-trailer loading docks, parking, and infrastructure. Off-site improvements include a driveway connecting the industrial development to the intersection of Perry Street and Indian Avenue. The archaeological surveys, which were conducted on May 23, 2018 and January 25, 2019, were completed in order to determine if cultural resources exist within the property or off-site area. The survey identified two features within the proposed warehouse site that, although maintained and modern in appearance, likely date to the early 1950s. The features are the remains of a loose gravel access road and concrete slab with a modern spigot and do not qualify as significant resources under the California Environmental Quality Act (CEQA). Therefore, the survey did not identify any significant cultural resources within the Area of Potential Effect (APE). As part of this study, a copy of this report will be submitted to the Eastern Information Center (EIC) at the University of California at Riverside (UCR). The two historic features have been recorded on the appropriate Department of Parks and Recreation (DPR) forms and submitted to the EIC and have been given the permanent site number P-33-028621 (Confidential Appendix). All investigations conducted by BFSA related to this project conformed to CEQA and City of Perris environmental guidelines.

II. SETTING

Natural Environment

Riverside County, including the city of Perris, lies in the Peninsular Ranges Geologic Province of southern California. The range, which lies in a northwest to southeast trend through the county, extends around 1,000 miles from the Raymond-Malibu Fault Zone in western Los Angeles County to the southern tip of Baja California. The subject property and off-site driveway improvement area are generally flat. Elevations within the project range from approximately 1,460

to 1,465 feet above mean sea level (AMSL). Dirt utility roads are located along the northern and western perimeter of the property, while an east to west gravel/asphalt road bisects the proposed warehouse site. The property and off-site driveway improvement area is characterized as disked and disturbed vacant land that historically was utilized for agriculture. Soils in the project and off-site driveway improvement area are mainly comprised of Exeter sandy loam, zero to two percent slopes with the far southeastern corner classified as Pachappa fine sandy loam, zero to two percent slopes (Ramirez 2016).

Currently, the vegetation within the project and off-site driveway improvement area primarily consists of non-native trees, grasses, and weeds. During the prehistoric period, vegetation near the project and off-site driveway improvement area provided sufficient food resources to support prehistoric human occupants. Animals that inhabited the project and off-site driveway improvement area during prehistoric times included mammals such as rabbits, squirrels, gophers, mice, rats, deer, and coyotes, in addition to a variety of reptiles and amphibians. The natural setting of the project and off-site driveway improvement area during the prehistoric occupation offered a rich nutritional resource base. Fresh water was likely obtainable on a year-round basis from the San Jacinto River. Historically, the property and off-site driveway improvement area likely contained the same plant and animal species that are present today.

Cultural Setting

Paleo Indian, Archaic Period Milling Stone Horizon, and the Late Prehistoric Takic groups are the three general cultural periods represented in Riverside County. The following discussion of the cultural history of Riverside County references the San Dieguito Complex, Encinitas Tradition, Milling Stone Horizon, La Jolla Complex, Pauma Complex, and San Luis Rey Complex, since these culture sequences have been used to describe archaeological manifestations in the region. The Late Prehistoric component present in the Riverside County area was represented by the Cahuilla, Gabrielino, and Luiseño Indians.

Absolute chronological information, where possible, will be incorporated into this discussion to examine the effectiveness of continuing to interchangeably use these terms. Reference will be made to the geological framework that divides the culture chronology of the area into four segments: the late Pleistocene (20,000 to 10,000 YBP [years before the present]), the early Holocene (10,000 to 6,650 YBP), the middle Holocene (6,650 to 3,350 YBP), and the late Holocene (3,350 to 200 YBP).

Paleo Indian Period (Late Pleistocene: 11,500 to circa 9,000 YBP)

The Paleo Indian Period is associated with the terminus of the late Pleistocene (12,000 to 10,000 YBP). The environment during the late Pleistocene was cool and moist, which allowed for glaciation in the mountains and the formation of deep, pluvial lakes in the deserts and basin lands (Moratto 1984). However, by the terminus of the late Pleistocene, the climate became warmer, which caused the glaciers to melt, sea levels to rise, greater coastal erosion, large lakes to recede

and evaporate, extinction of Pleistocene megafauna, and major vegetation changes (Moratto 1984; Martin 1967, 1973; Fagan 1991). The coastal shoreline at 10,000 YBP, depending upon the particular area of the coast, was near the 30-meter isobath, or two to six kilometers further west than its present location (Masters 1983).

Paleo Indians were likely attracted to multiple habitat types, including mountains, marshlands, estuaries, and lakeshores. These people likely subsisted using a more generalized hunting, gathering, and collecting adaptation utilizing a variety of resources including birds, mollusks, and both large and small mammals (Erlandson and Colten 1991; Moratto 1984; Moss and Erlandson 1995).

Archaic Period (Early and Middle Holocene: circa 9,000 to 1,300 YBP)

Between 9,000 and 8,000 YBP, a widespread complex was established in the southern California region, primarily along the coast (Warren and True 1961). This complex is locally known as the La Jolla Complex (Rogers 1939; Moriarty 1966), which is regionally associated with the Encinitas Tradition (Warren 1968) and shares cultural components with the widespread Milling Stone Horizon (Wallace 1955). The coastal expression of this complex appeared in the southern California coastal areas and focused upon coastal resources and the development of deeply stratified shell middens that were primarily located around bays and lagoons. The older sites associated with this expression are located at Topanga Canyon, Newport Bay, Agua Hedionda Lagoon, and some of the Channel Islands. Radiocarbon dates from sites attributed to this complex span a period of over 7,000 years in this region, beginning over 9,000 YBP.

The Encinitas Tradition is best recognized for its pattern of large coastal sites characterized by shell middens, grinding tools that are closely associated with the marine resources of the area, cobble-based tools, and flexed human burials (Shumway et al. 1961; Smith and Moriarty 1985). While ground stone tools and scrapers are the most recognized tool types, coastal Encinitas Tradition sites also contain numerous utilized flakes, which may have been used to pry open shellfish. Artifact assemblages at coastal sites indicate a subsistence pattern focused upon shellfish collection and nearshore fishing. This suggests an incipient maritime adaptation with regional similarities to more northern sites of the same period (Koerper et al. 1986). Other artifacts associated with Encinitas Tradition sites include stone bowls, doughnut stones, discoidals, stone balls, and stone, bone, and shell beads.

The coastal lagoons in southern California supported large Milling Stone Horizon populations circa 6,000 YBP, as is shown by numerous radiocarbon dates from the many sites adjacent to the lagoons. The ensuing millennia were not stable environmentally, and by 3,000 YBP, many of the coastal sites in central San Diego County had been abandoned (Gallegos 1987, 1992). The abandonment of the area is usually attributed to the sedimentation of coastal lagoons and the resulting deterioration of fish and mollusk habitat, which is a well-documented situation at Batiquitos Lagoon (Miller 1966; Gallegos 1987). Over a two-thousand-year period at Batiquitos Lagoon, dominant mollusk species occurring in archaeological middens shift from deep-water

mollusks (*Argopecten* sp.) to species tolerant of tidal flat conditions (*Chione* sp.), indicating water depth and temperature changes (Miller 1966; Gallegos 1987).

This situation likely occurred for other small drainages (Buena Vista, Agua Hedionda, San Marcos, and Escondido creeks) along the central San Diego coast where low flow rates did not produce sufficient discharge to flush the lagoons they fed (Buena Vista, Agua Hedionda, Baticuitos, and San Elijo lagoons) (Byrd 1998). Drainages along the northern and southern San Diego coastline were larger and flushed the coastal hydrological features they fed, keeping them open to the ocean and allowing for continued human exploitation (Byrd 1998). Peñasquitos Lagoon exhibits dates as late as 2,355 YBP (Smith and Moriarty 1985) and San Diego Bay showed continuous occupation until the close of the Milling Stone Horizon (Gallegos and Kyle 1988). Additionally, data from several drainages in Camp Pendleton indicate a continued occupation of shell midden sites until the close of the period, indicating that coastal sites were not entirely abandoned during this time (Byrd 1998).

By 5,000 YBP, an inland expression of the La Jolla Complex is evident in the archaeological record, exhibiting influences from the Campbell Tradition from the north. These inland Milling Stone Horizon sites have been termed “Pauma Complex” (True 1958; Warren et al. 1961; Meighan 1954). By definition, Pauma Complex sites share a predominance of grinding implements (manos and metates), lack mollusk remains, have greater tool variety (including atlatl dart points, quarry-based tools, and crescentics), and seem to express a more sedentary lifestyle with a subsistence economy based upon the use of a broad variety of terrestrial resources. Although originally viewed as a separate culture from the coastal La Jolla Complex (True 1980), it appears that these inland sites may be part of a subsistence and settlement system utilized by the coastal peoples. Evidence from the 4S Project in inland San Diego County suggests that these inland sites may represent seasonal components within an annual subsistence round by La Jolla Complex populations (Raven-Jennings et al. 1996). Including both coastal and inland sites of this time period in discussions of the Encinitas Tradition, therefore, provides a more complete appraisal of the settlement and subsistence system exhibited by this cultural complex.

More recent work by Sutton has identified a more localized complex known as the Greven Knoll Complex. The Greven Knoll Complex is a redefined northern inland expression of the Encinitas Tradition first put forth by Mark Sutton and Jill Gardener (2010). Sutton and Gardner (2010:25) state that “[t]he early millingstone archaeological record in the northern portion of the interior southern California was not formally named but was often referred to as ‘Inland Millingstone,’ ‘Encinitas,’ or even ‘Topanga.’” Therefore, they proposed that all expressions of the inland Milling Stone in southern California north of San Diego County be grouped together in the Greven Knoll Complex.

The Greven Knoll Complex, as postulated by Sutton and Gardener (2010), is broken into three phases and obtained its name from the type-site Greven Knoll located in Yucaipa, California. Presently, the Greven Knoll Site is part of the Yucaipa’t Site (SBR-1000) and was combined with the adjacent Simpson Site. Excavations at Greven Knoll recovered manos, metates, projectile

points, discoidal coggled stones, and a flexed inhumation with a possible cremation (Kowta 1969:39). It is believed that the Greven Knoll Site was occupied between 5,000 and 3,500 YBP. The Simpson Site contained mortars, pestles, side-notched points, and stone and shell beads. Based upon the data recovered at these sites, Kowta (1969:39) suggested that “coastal Milling Stone Complexes extended to and interdigitated with the desert Pinto Basin Complex in the vicinity of the Cajon Pass.”

Phase I of the Greven Knoll Complex is generally dominated by the presence of manos and metates, core tools, hammerstones, large dart points, flexed inhumations, and occasional cremations. Mortars and pestles are absent from this early phase, and the subsistence economy emphasized hunting. Sutton and Gardener (2010:26) propose that the similarity of the material culture of Greven Knoll Phase I and that found in the Mojave Desert at Pinto Period sites indicates that the Greven Knoll Complex was influenced by neighbors to the north at that time. Accordingly, Sutton and Gardener (2010) believe that Greven Knoll Phase I may have appeared as early as 9,400 YBP and lasted until about 4,000 YBP.

Greven Knoll Phase II is associated with a period between 4,000 and 3,000 YBP. Artifacts common to Greven Knoll Phase II include manos and metates, Elko points, core tools, and discoidals. Pestles and mortars are present; however, they are only represented in small numbers. Finally, there is an emphasis upon hunting and gathering for subsistence (Sutton and Gardner 2010:8).

Greven Knoll Phase III includes manos, metates, Elko points, scraper planes, choppers, hammerstones, and discoidals. Again, small numbers of mortars and pestles are present. Greven Knoll Phase III spans from approximately 3,000 to 1,000 YBP and shows a reliance upon seeds and yucca. Hunting is still important, but bones seem to have been processed to obtain bone grease more often in this later phase (Sutton and Gardner 2010:8).

The shifts in food processing technologies during each of these phases indicate a change in subsistence strategies; although people were still hunting for large game, plant-based foods eventually became the primary dietary resource (Sutton 2011a). Sutton’s (2011b) argument posits that the development of mortars and pestles during the middle Holocene can be attributed to the year-round exploitation of acorns as a main dietary provision. Additionally, the warmer and drier climate may have been responsible for groups from the east moving toward coastal populations, which is archaeologically represented by the interchange of coastal and eastern cultural traits (Sutton 2011a).

Late Prehistoric Period (Late Holocene: 1,300 YBP to 1790)

Many Luiseño hold the world view that as a population they were created in southern California; however, archaeological and anthropological data proposes a scientific perspective. Archaeological and anthropological evidence suggests that at approximately 1,350 YBP, Takic-speaking groups from the Great Basin region moved into Riverside County, marking the transition to the Late Prehistoric Period. An analysis of the Takic expansion by Sutton (2009) indicates that

inland southern California was occupied by “proto-Yuman” populations before 1,000 YBP. The comprehensive, multi-phase model offered by Sutton (2009) employs linguistic, ethnographic, archaeological, and biological data to solidify a reasonable argument for population replacement of Takic groups to the north by Penutians (Laylander 1985). As a result, it is believed that Takic expansion occurred starting around 3,500 YBP moving toward southern California, with the Gabrielino language diffusing south into neighboring Yuman (Hokan) groups around 1,500 to 1,000 YBP, possibly resulting in the Luiseño dialect.

Based upon Sutton’s model, the final Takic expansion would not have occurred until about 1,000 YBP, resulting in Vanyume, Serrano, Cahuilla, and Cupeño dialects. The model suggests that the Luiseño did not simply replace Hokan speakers, but were rather a northern San Diego County/southern Riverside County Yuman population who adopted the Takic language. This period is characterized by higher population densities and elaborations in social, political, and technological systems. Economic systems diversified and intensified during this period with the continued elaboration of trade networks, the use of shell-bead currency, and the appearance of more labor-intensive, yet effective, technological innovations. Technological developments during this period included the introduction of the bow and arrow between A.D. 400 and 600 and the introduction of ceramics. Atlatl darts were replaced by smaller arrow darts, including Cottonwood series points. Other hallmarks of the Late Prehistoric Period include extensive trade networks as far-reaching as the Colorado River Basin and cremation of the dead.

Protohistoric Period (Late Holocene: 1790 to Present)

Ethnohistoric and ethnographic evidence indicates that three Takic-speaking groups occupied portions of Riverside County: the Cahuilla, the Gabrielino, and the Luiseño. The geographic boundaries between these groups in pre- and proto-historic times are difficult to place, but the project is located well within the borders of ethnographic Luiseño territory. This group was a seasonal hunting and gathering people with cultural elements that were very distinct from Archaic Period peoples. These distinctions include cremation of the dead, the use of the bow and arrow, and exploitation of the acorn as a main food staple (Moratto 1984). Along the coast, the Luiseño made use of available marine resources by fishing and collecting mollusks for food. Seasonally available terrestrial resources, including acorns and game, were also sources of nourishment for Luiseño groups. Elaborate kinship and clan systems between the Luiseño and other groups facilitated a wide-reaching trade network that included trade of Obsidian Butte obsidian and other resources from the eastern deserts, as well as steatite from the Channel Islands.

According to Charles Handley (1967), the primary settlements of Late Prehistoric Luiseño Indians in the San Jacinto Plain were represented by Ivah and Soboba near Soboba Springs, Jusipah near the town of San Jacinto, Ararah in Webster’s Canyon en route to Idyllwild, Pahsitha near Big Springs Ranch southeast of Hemet, and Corova in Castillo Canyon. These locations share features such as the availability of food and water resources. Features of this land use include petroglyphs and pictographs, as well as widespread milling, which is evident in bedrock and portable

implements. Groups in the vicinity of the project, neighboring the Luiseño, include the Cahuilla and the Gabrielino. Ethnographic data for the three groups is presented below.

Luiseño

When contacted by the Spanish in the sixteenth century, the Luiseño occupied a territory bounded on the west by the Pacific Ocean, on the east by the Peninsular Ranges mountains at San Jacinto (including Palomar Mountain to the south and Santiago Peak to the north), on the south by Agua Hedionda Lagoon, and on the north by Aliso Creek in present-day San Juan Capistrano. The Luiseño were a Takic-speaking people more closely related linguistically and ethnographically to the Cahuilla, Gabrielino, and Cupeño to the north and east rather than the Kumeyaay who occupied territory to the south. The Luiseño differed from their neighboring Takic speakers in having an extensive proliferation of social statuses, a system of ruling families that provided ethnic cohesion within the territory, a distinct worldview that stemmed from the use of *datura* (a hallucinogen), and an elaborate religion that included the creation of sacred sand paintings depicting the deity *Chingichngish* (Bean and Shipek 1978; Kroeber 1976).

Subsistence and Settlement

The Luiseño occupied sedentary villages most often located in sheltered areas in valley bottoms, along streams, or along coastal strands near mountain ranges. Villages were located near water sources to facilitate acorn leaching and in areas that offered thermal and defensive protection. Villages were composed of areas that were publicly and privately (by family) owned. Publicly owned areas included trails, temporary campsites, hunting areas, and quarry sites. Inland groups had fishing and gathering sites along the coast that were used intensively from January to March when inland food resources were scarce. During October and November, most of the village would relocate to mountain oak groves to harvest acorns. The Luiseño remained at village sites for the remainder of the year, where food resources were within a day's travel (Bean and Shipek 1978; Kroeber 1976).

The most important food source for the Luiseño was the acorn, six different species of which were used (*Quercus californica*, *Quercus agrifolia*, *Quercus chrysolepis*, *Quercus dumosa*, *Quercus engelmannii*, and *Quercus wislizenii*). Seeds, particularly of grasses, composites, and mints, were also heavily exploited. Seed-bearing species were encouraged through controlled burns, which were conducted at least every third year. A variety of other stems, leaves, shoots, bulbs, roots, and fruits were also collected. Hunting augmented this vegetal diet. Animal species taken included deer, rabbit, hare, woodrat, ground squirrel, antelope, quail, duck, freshwater fish from mountain streams, marine mammals, and other sea creatures such as fish, crustaceans, and mollusks (particularly abalone, or *Haliotis* sp.). In addition, a variety of snakes, small birds, and rodents were eaten (Bean and Shipek 1978; Kroeber 1976).

Social Organization

Social groups within the Luiseño nation consisted of patrilinear families or clans, which were politically and economically autonomous. Several clans comprised a religious party, or *nota*, which was headed by a chief who organized ceremonies and controlled economics and warfare. The chief had assistants who specialized in particular aspects of ceremonial or environmental knowledge and who, with the chief, were part of a religion-based social group with special access to supernatural power, particularly that of *Chingichngish*. The positions of chief and assistants were hereditary, and the complexity and multiplicity of these specialists' roles likely increased in coastal and larger inland villages (Bean and Shipek 1978; Kroeber 1976; Strong 1929).

Marriages were arranged by the parents, often made to forge alliances between lineages. Useful alliances included those between groups of differing ecological niches and those that resulted in territorial expansion. Residence was patrilocal (Bean and Shipek 1978; Kroeber 1976). Women were primarily responsible for plant gathering, and men principally hunted, although at times, particularly during acorn and marine mollusk harvests, there was no division of labor. Elderly women cared for children and elderly men participated in rituals, ceremonies, and political affairs. They were also responsible for manufacturing hunting and ritual implements. Children were taught subsistence skills at the earliest age possible (Bean and Shipek 1978; Kroeber 1976).

Material Culture

House structures were conical, partially subterranean, and thatched with reeds, brush, or bark. Ramadas were rectangular, protected workplaces for domestic chores such as cooking. Ceremonial sweathouses were important in purification rituals; these were round and partially subterranean thatched structures covered with a layer of mud. Another ceremonial structure was the *wámkis* (located in the center of the village, serving as the place of rituals), where sand paintings and other rituals associated with the *Chingichngish* religious group were performed (Bean and Shipek 1978; Kroeber 1976).

Clothing was minimal; women wore a cedar-bark and netted twine double apron and men wore a waist cord. In cold weather, cloaks or robes of rabbit fur, deerskin, or sea otter fur were worn by both sexes. Footwear included deerskin moccasins and sandals fashioned from yucca fibers. Adornments included bead necklaces and pendants made of bone, clay, stone, shell, bear claw, mica, deer hooves, and abalone shell. Men wore ear and nose piercings made from cane or bone, which were sometimes decorated with beads. Other adornments were commonly decorated with semiprecious stones including quartz, topaz, garnet, opal, opalite, agate, and jasper (Bean and Shipek 1978; Kroeber 1976).

Hunting implements included the bow and arrow. Arrows were tipped with either a carved, fire-hardened wooden tip or a lithic point, usually fashioned from locally available metavolcanic material or quartz. Throwing sticks fashioned from wood were used in hunting small game, while deer head decoys were used during deer hunts. Coastal groups fashioned dugout canoes for nearshore fishing and harvested fish with seines, nets, traps, and hooks made of bone or abalone

shell (Bean and Shipek 1978; Kroeber 1976).

The Luiseño had a well-developed basket industry. Baskets were used in resource gathering, food preparation, storage, and food serving. Ceramic containers were shaped by paddle and anvil and fired in shallow, open pits to be used for food storage, cooking, and serving. Other utensils included wood implements, steatite bowls, and ground stone manos, metates, mortars, and pestles (Bean and Shipek 1978; Kroeber 1976). Additional tools such as knives, scrapers, choppers, awls, and drills were also used. Shamanistic items include soapstone or clay smoking pipes and crystals made of quartz or tourmaline (Bean and Shipek 1978; Kroeber 1976).

Cahuilla

At the time of Spanish contact in the sixteenth century, the Cahuilla occupied territory that included the San Bernardino Mountains, Orocopia Mountain, and the Chocolate Mountains to the west, Salton Sea and Borrego Springs to the south, Palomar Mountain and Lake Mathews to the west, and the Santa Ana River to the north. The Cahuilla are a Takic-speaking people closely related to their Gabrielino and Luiseño neighbors, although relations with the Gabrielino were more intense than with the Luiseño. They differ from the Luiseño and Gabrielino in that their religion is more similar to the Mohave tribes of the eastern deserts than the *Chingichngish* religious group of the Luiseño and Gabrielino. The following is a summary of ethnographic data regarding this group (Bean 1978; Kroeber 1976).

Subsistence and Settlement

Cahuilla villages were typically permanent and located on low terraces within canyons in proximity to water sources. These locations proved to be rich in food resources and also afforded protection from prevailing winds. Villages had areas that were publicly owned and areas that were privately owned by clans, families, or individuals. Each village was associated with a particular lineage and series of sacred sites that included unique petroglyphs and pictographs. Villages were occupied throughout the year; however, during a several-week period in the fall, most of the village members relocated to mountain oak groves to take part in acorn harvesting (Bean 1978; Kroeber 1976).

The Cahuilla's use of plant resources is well documented. Plant foods harvested by the Cahuilla included valley oak acorns and single-leaf pinyon pine nuts. Other important plant species included bean and screw mesquite, agave, Mohave yucca, cacti, palm, chia, quail brush, yellowray goldfield, goosefoot, manzanita, catsclaw, desert lily, mariposa lily, and a number of other species such as grass seed. A number of agricultural domesticates were acquired from the Colorado River tribes including corn, bean, squash, and melon grown in limited amounts. Animal species taken included deer, bighorn sheep, pronghorn antelope, rabbit, hare, rat, quail, dove, duck, roadrunner, and a variety of rodents, reptiles, fish, and insects (Bean 1978; Kroeber 1976).

Social Organization

The Cahuilla was not a political nation, but rather a cultural nationality with a common

language. Two non-political, non-territorial patrimoieties were recognized, the Wildcats (túktem) and the Coyotes (?ístam). Lineage and kinship were memorized at a young age among the Cahuilla, providing a backdrop for political relationships. Clans were composed of three to 10 lineages; each lineage owned a village site and specific resource areas. Lineages within a clan cooperated in subsistence activities, defense, and rituals (Bean 1978; Kroeber 1976).

A system of ceremonial hierarchy operated within each lineage. The hierarchy included the lineage leader, who was responsible for leading subsistence activities, guarding the sacred bundle, and negotiating with other lineage leaders in matters concerning land use, boundary disputes, marriage arrangements, trade, warfare, and ceremonies. The ceremonial assistant to the lineage leader was responsible for organizing ceremonies. A ceremonial singer possessed and performed songs at rituals and trained assistant singers. The shaman cured illnesses through supernatural powers, controlled natural phenomena, and was the guardian of ceremonies, keeping evil spirits away. The diviner was responsible for finding lost objects, telling future events, and locating game and other food resources. Doctors were usually older women who cured various ailments and illnesses with their knowledge of medicinal herbs. Finally, certain Cahuilla specialized as traders, who ranged as far west as Santa Catalina and as far east as the Gila River (Bean 1978; Kroeber 1976).

Marriages were arranged by parents from opposite moieties. When a child was born, an alliance formed between the families, which included frequent reciprocal exchanges. The Cahuilla kinship system extended to relatives within five generations. Important economic decisions, primarily the distribution of goods, operated within this kinship system (Bean 1978; Kroeber 1976).

Material Culture

Cahuilla houses were dome-shaped or rectangular, thatched structures. The home of the lineage leader was the largest, located near the ceremonial house with the best access to water. Other structures within the village included the men's sweathouse and granaries (Bean 1978; Kroeber 1976).

Cahuilla clothing, like other groups in the area, was minimal. Men typically wore a loincloth and sandals; women wore skirts made from mesquite bark, animal skin, or tules. Babies wore mesquite bark diapers. Rabbit skin cloaks were worn in cold weather (Bean 1978; Kroeber 1976).

Hunting implements included the bow and arrow, throwing sticks, and clubs. Grinding tools used in food processing included manos, metates, and wooden mortars. The Cahuilla were known to use long, wood, grinding implements to process mesquite beans; the mortar was typically a hollowed wooden log buried in the ground. Other tools included steatite arrow shaft straighteners (Bean 1978; Kroeber 1976).

Baskets were made from rush, deer grass, and skunkbrush. Different species and leaves were chosen for different colors in the basket design. Coiled-ware baskets were either flat (for

plates, trays, or winnowing), bowl-shaped (for food serving), deep, inverted, and cone-shaped (for transporting), or rounded and flat-bottomed for storing utensils and personal items (Bean 1978; Kroeber 1976).

Cahuilla pottery was made from a thin, red-colored ceramic ware that was often painted and incised. Four basic vessel types are known for the Cahuilla: small-mouthed jars, cooking pots, bowls, and dishes. Additionally, smoking pipes and flutes were fashioned from ceramic (Bean 1978; Kroeber 1976).

Gabrielino

The territory of the Gabrielino at the time of Spanish contact covers much of present-day Los Angeles and Orange counties. The southern extent of this culture area is bounded by Aliso Creek, the eastern extent is located east of present-day San Bernardino along the Santa Ana River, the northern extent includes the San Fernando Valley, and the western extent includes portions of the Santa Monica Mountains. The Gabrielino also occupied several Channel Islands including Santa Barbara Island, Santa Catalina Island, San Nicholas Island, and San Clemente Island. Because of their access to certain resources, including a steatite source from Santa Catalina Island, this group was among the wealthiest and most populous aboriginal groups in all of southern California. Trade of materials and resources controlled by the Gabrielino extended as far north as the San Joaquin Valley, as far east as the Colorado River, and as far south as Baja California (Bean and Smith 1978; Kroeber 1976).

Subsistence and Settlement

The Gabrielino lived in permanent villages and smaller resource-gathering camps occupied at various times of the year depending upon the seasonality of the resource. Larger villages were comprised of several families or clans, while smaller, seasonal camps typically housed smaller family units. The coastal area between San Pedro and Topanga Canyon was the location of primary subsistence villages, while secondary sites were located near inland sage stands, oak groves, and pine forests. Permanent villages were located along rivers and streams and in sheltered areas along the coast. As previously mentioned, the Channel Islands were also the locations of relatively large settlements (Bean and Smith 1978; Kroeber 1976).

Resources procured along the coast and on the islands were primarily marine in nature and included tuna, swordfish, ray and shark, California sea lion, Stellar sea lion, harbor seal, northern elephant seal, sea otter, dolphin and porpoise, various waterfowl species, numerous fish species, purple sea urchin, and mollusks, such as rock scallop, California mussel, and limpet. Inland resources included oak acorn, pine nut, Mohave yucca, cacti, sage, grass nut, deer, rabbit, hare, rodent, quail, duck, and a variety of reptiles such as western pond turtle and numerous snake species (Bean and Smith 1978; Kroeber 1976).

Social Organization

The social structure of the Gabrielino is little known; however, there appears to have been at least three social classes: 1) the elite, which included the rich, chiefs, and their immediate family; 2) a middle class, which included people of relatively high economic status or long-established lineages; and 3) a class of people that included most other individuals in the society. Villages were politically autonomous units comprised of several lineages. During times of the year when certain seasonal resources were available, the village would divide into lineage groups and move out to exploit them, returning to the village between forays (Bean and Smith 1978; Kroeber 1976).

Each lineage had its own leader, with the village chief coming from the dominant lineage. Several villages might be allied under a paramount chief. Chiefly positions were of an ascribed status, most often passed to the eldest son. Chiefly duties included providing village cohesion, leading warfare and peace negotiations with other groups, collecting tribute from the village(s) under his jurisdiction, and arbitrating disputes within the village(s). The status of the chief was legitimized by his safekeeping of the sacred bundle, a representation of the link between the material and spiritual realms and the embodiment of power (Bean and Smith 1978; Kroeber 1976).

Shamans were leaders in the spirit realm. The duties of the shaman included conducting healing and curing ceremonies, guarding the sacred bundle, locating lost items, identifying and collecting poisons for arrows, and making rain (Bean and Smith 1978; Kroeber 1976).

Marriages were made between individuals of equal social status and, in the case of powerful lineages, marriages were arranged to establish political ties between the lineages (Bean and Smith 1978; Kroeber 1976).

Men conducted the majority of the heavy labor, hunting, fishing, and trading with other groups. Women's duties included gathering and preparing plant and animal resources, and making baskets, pots, and clothing (Bean and Smith 1978; Kroeber 1976).

Material Culture

Gabrielino houses were domed, circular structures made of thatched vegetation. Houses varied in size and could house from one to several families. Sweathouses (semicircular, earth-covered buildings) were public structures used in male social ceremonies. Other structures included menstrual huts and a ceremonial structure called a *yuvar*, an open-air structure built near the chief's house (Bean and Smith 1978; Kroeber 1976).

Clothing was minimal; men and children most often went naked, while women wore deerskin or bark aprons. In cold weather, deerskin, rabbit fur, or bird skin (with feathers intact) cloaks were worn. Island and coastal groups used sea otter fur for cloaks. In areas of rough terrain, yucca fiber sandals were worn. Women often used red ochre on their faces and skin for adornment or protection from the sun. Adornment items included feathers, fur, shells, and beads (Bean and Smith 1978; Kroeber 1976).

Hunting implements included wooden clubs, sinew-backed bows, slings, and throwing clubs. Maritime implements included rafts, harpoons, spears, hook and line, and nets. A variety

of other tools included deer scapulae saws, bone and shell needles, bone awls, scrapers, bone or shell flakers, wedges, stone knives and drills, metates, mullers, manos, shell spoons, bark platters, and wooden paddles and bowls. Baskets were made from rush, deer grass, and skunkbush. Baskets were fashioned for hoppers, plates, trays, and winnowers for leaching, straining, and gathering. Baskets were also used for storing, preparing, and serving food, and for keeping personal and ceremonial items (Bean and Smith 1978; Kroeber 1976).

The Gabrielino had exclusive access to soapstone, or steatite, procured from Santa Catalina Island quarries. This highly prized material was used for making pipes, animal carvings, ritual objects, ornaments, and cooking utensils. The Gabrielino profited well from trading steatite since it was valued so much by groups throughout southern California (Bean and Smith 1978; Kroeber 1976).

Ethnohistoric Period (1769 to Present)

European exploration along the California coast began in 1542 with the landing of Juan Rodriguez Cabrillo and his men at San Diego Bay. Sixty years after the Cabrillo expeditions, an expedition under Sebastian Viscaíno made an extensive and thorough exploration of the Pacific coast. Although the voyage did not extend beyond the northern limits of the Cabrillo track, Viscaíno had the most lasting effect on the nomenclature of the coast. Many of the names he gave to various locations have survived, whereas practically every one of the names given by Cabrillo has faded from use. For instance, Cabrillo gave the name “San Miguel” to the first port he stopped at in what is now the United States; 60 years later, Viscaíno changed it to “San Diego” (Rolle 1969). The early European voyages observed Native Americans living in villages along the coast but did not make any substantial, long-lasting impact. At the time of contact, the Luiseño population was estimated to have ranged from 4,000 to as many as 10,000 individuals (Bean and Shipek 1978; Kroeber 1976).

Historic Period

The historic background of the project area and off-site driveway improvement area began with the Spanish colonization of Alta California. The first Spanish colonizing expedition reached southern California in 1769 with the intention of converting and civilizing the indigenous populations, as well as expanding the knowledge of and access to new resources in the region (Brigandi 1998). In the late eighteenth century, the San Gabriel (Los Angeles County), San Juan Capistrano (Orange County), and San Luis Rey (San Diego County) missions began colonizing southern California and gradually expanded their use of the interior valley (into what is now western Riverside County) for raising grain and cattle to support the missions (Riverside County n.d.). The San Gabriel Mission claimed lands in what is now Jurupa, Riverside, San Jacinto, and the San Gorgonio Pass, while the San Luis Rey Mission claimed land in what is now Lake Elsinore, Temecula, and Murrieta (American Local History Network: Riverside County, California 1998). The indigenous groups who occupied these lands were recruited by missionaries,

converted, and put to work in the missions (Pourade 1964). Throughout this period, the Native American populations were decimated by introduced diseases, a drastic shift in diet resulting in poor nutrition, and social conflicts due to the introduction of an entirely new social order (Cook 1976).

In the mid- to late 1770s, Juan Bautista de Anza passed through much of Riverside County while searching for an overland route from Sonora, Mexico to San Gabriel and Los Angeles, describing fertile valleys, lakes, and sub-desert areas (American Local History Network: Riverside County, California 1998; Riverside County n.d.). In 1797, Father Presidente Lausen, Father Norberto de Santiago, and Corporal Pedro Lisalde led an expedition from Mission San Juan Capistrano through southwestern Riverside County in search of a new mission site before constructing Mission San Luis Rey in northern San Diego County (Brigandi 1998). While no missions were ever built in what would become Riverside County (American Local History Network: Riverside County, California 1998), many mission outposts, or *asistencias*, were established in the early years of the nineteenth century to extend the missions' influence to the backcountry (Brigandi 1998). Two outposts located in Riverside County include San Jacinto and Temecula.

Mexico gained independence in 1822 and desecularized the missions in 1832, signifying the end of the Mission Period (Brigandi 1998; Riverside County n.d.). By this time, the missions owned some of the best and most fertile land in southern California. In order for California to develop, the land would have to be made productive enough to turn a profit (Brigandi 1998). The new government began distributing the vast mission holdings to wealthy and politically connected Mexican citizens. The "grants" were called "ranchos," of which Jurupa, El Rincon, La Sierra, El Sobrante de San Jacinto, La Laguna (Lake Elsinore), Santa Rosa, Temecula, Pauba, San Jacinto Nuevo y Potrero, and San Jacinto Viejo were located in present-day Riverside County. Many of these ranchos have lent their names to modern-day locales (American Local History Network: Riverside County, California 1998). The first grant in present-day Riverside County, Rancho Jurupa, was given to Juan Bandini in 1838. These ranchos were all located in the valley environments typical of western Riverside County.

The treatment of Native Americans grew worse during the Rancho Period. Most of the Native Americans were forced off of their land or put to work on the now privately-owned ranchos, most often as slave labor. In light of the brutal ranchos, the degree to which Native Americans had become dependent upon the mission system is evident when, in 1838, a group of Native Americans from the San Luis Rey Mission petitioned government officials in San Diego to relieve suffering at the hands of the rancheros:

We have suffered incalculable losses, for some of which we are in part to be blamed for because many of us have abandoned the Mission ... We plead and beseech you ... to grant us a Rev. Father for this place. We have been accustomed to the Rev. Fathers and to their manner of managing the duties. We labored under their

intelligent directions, and we were obedient to the Fathers according to the regulations, because we considered it as good for us. (Brigandi 1998:21)

Native American culture had been disrupted to the point where they could no longer rely upon prehistoric subsistence and social patterns. Not only does this illustrate how dependent the Native Americans had become upon the missionaries, but it also indicates a marked contrast in the way the Spanish treated the Native Americans compared to the Mexican and United States ranchers. Spanish colonialism (missions) is based upon utilizing human resources while integrating them into their society. The Mexican and American ranchers did not accept Native Americans into their social order and used them specifically for the extraction of labor, resources, and profit. Rather than being incorporated, they were either subjugated or exterminated (Cook 1976).

In 1846, war erupted between Mexico and the United States. In 1848, with the signing of the Treaty of Guadalupe Hidalgo, the region was annexed as a territory of the United States, leading to California becoming a state in 1850. These events generated a steady flow of settlers into the area, including gold miners, entrepreneurs, health-seekers, speculators, politicians, adventurers, seekers of religious freedom, and individuals desiring to create utopian colonies.

In early 1852, the Native Americans of southern Riverside County, including the Luiseño and the Cahuilla, thought they had signed a treaty resulting in their ownership of all lands from Temecula to Aguanga east to the desert, including the San Jacinto Valley and the San Geronimo Pass. The Temecula Treaty also included food and clothing provisions for the Native Americans. However, Congress never ratified the treaties, and the promise of one large reservation was rescinded (Brigandi 1998).

With the completion of the transcontinental railroad in 1869, land speculators, developers, and colonists began to invest in southern California. The first colony in what was to become Riverside County was Riverside itself. Judge John Wesley North, an abolitionist from Tennessee, brought a group of associates and co-investors out to southern California and founded Riverside on part of the Jurupa Rancho. A few years after, the navel orange was planted and found to be such a success that it quickly became the agricultural staple of the region (American Local History Network: Riverside County, California 1998).

By the late 1880s and early 1890s, there was growing discontent between Riverside and San Bernardino, its neighbor 10 miles to the north, due to differences in opinion concerning religion, morality, the Civil War, politics, and fierce competition to attract settlers. After a series of instances in which charges were claimed about unfair use of tax monies to the benefit of the city of only San Bernardino, several people from Riverside decided to investigate the possibility of a new county. In May 1893, voters living within portions of San Bernardino County (to the north) and San Diego County (to the south) approved the formation of Riverside County. Early business opportunities were linked to the agriculture industry, but commerce, construction, manufacturing, transportation, and tourism also provided a healthy local economy. By the time of Riverside

County's formation, Riverside had grown to become the wealthiest city per capita in the country due to the successful cultivation of the navel orange (American Local History Network: Riverside County, California 1998; Riverside County n.d.).

The project and off-site driveway improvement area are mainly located within the previous Rancho San Jacinto Nuevo y Portrero land grant. The rancho was granted to Miguel Pedorena by Mexican Governor Pío Pico in 1846 (Hoffman 1862). In 1853, Jose Antonio Aguirre, the owner of Rancho San Jacinto Sobrante and Pedorena's father-in-law, purchased the land from Pedorena (Robinson 1997).

In 1881, the California Southern Railroad laid the tracks for the transcontinental route of the Santa Fe Railway through the plains, west of the project. At this time, the area where the railroad was placed was referred to as the San Jacinto Plains. Surveying and construction of the railroad route was led by Patrick Thomas Perris, for whom the city of Perris was named. The railroad was completed in 1882, which allowed hundreds of settlers to enter the area for homesteading, most of them settling in Pinacate to the south (City of Perris 2013).

While still part of San Diego County, Rancho San Jacinto Nuevo y Portrero was patented to T.W. Sutherland, guardian of Miguel Pedorena's children, in 1883 (Robinson 1997). In 1885, the citizens of Pinacate gathered together to create a more conveniently located station along the railroad route, and in 1886, after much hard work, the town site of Perris was established (City of Perris 2013). In 1911, Perris became an incorporated city, relying heavily upon dry grain farming and citrus groves (City of Perris 2013).

Starting in the late nineteenth century and extending through the twentieth century, Perris was mainly an agricultural community. Most of the current project area, off-site driveway improvement area, and surrounding vicinity was originally part of the Perris Irrigation District, also known as the Perris Land Company, during the late nineteenth century. The holdings of the Perris Land Company were subdivided in 1891, under the moniker of the Riverside Tract. The name of the tract was dictated by the investors, almost all of which resided in the city of Riverside (Gunther 1984). The land was laid out in 80-acre blocks which were subdivided into ten acre lots. The farm lots were sold off to farmers and speculators alike. Investors were guaranteed of the success of the Perris Irrigation District; however, by 1900, many of the properties had failed as farmers could not obtain a steady access to water.

Although the Riverside Tract was not as successful as originally predicted, traditionally the area did remain agricultural throughout the twentieth century. Due to the limited groundwater, dry grain farming was the main crop until the 1950s when the Eastern Municipal Water District began constructing infrastructure to better distribute water in the region. With better access to water, alfalfa, the King potato (which would produce two crops a year), and sugar beets became the mainstay of farming the Perris Valley (City of Perris n.d.)

The general area also was influenced by the development of March Field during the twentieth century. March Field was originally established March 1, 1918 as the Alessandro Flying Training Field following the United States' entry into World War I (Gunther 1984). The name

was officially changed to March Field on March 20, 1918 in honor of Peyton C. March, Jr., who had been killed in a training plane crash in Fort Worth, Texas earlier that year. The air field changed names many times throughout the 1940s. In 1941, the name was changed to March Army Air Field; in 1942, to March Army Air Base; and in 1947, to March Army Air Force Base to reflect the establishment of the United States Air Force. Although the name changed multiple times, residents have continued to refer to it as “March Field” (Gunther 1984).

The establishment of March Field was important to the region for many reasons associated with the role the local inhabitants and region would contribute to World War I and World War II. However, the relevant impact to the farming areas of Perris region were the establishment of the storm drains and water conveyance systems by the Riverside County Flood Control and the Metropolitan Water District. The establishment of modern water conveyance systems allowed farmers to better manage water on their land (City of Perris n.d.; California Department of Water Resources 2016; Metropolitan Water District n.d.).

Although Perris generally remained agricultural throughout the twentieth century, in recent years, the city has seen a growth in residential and industrial development. Today, many of the large agricultural fields have been developed into large logistics centers and warehouses servicing the greater Southern California region.

III. AREA OF POTENTIAL EFFECT (APE)

The overall project consists of 24.2 acres for industrial development and 2.64 acres of off-site improvements located within the city of Perris (APNs 302-060-002, -005, -006, and -038 and 302-050-034 and -036) situated at the northwest corner of the intersection of Indian Avenue and the Ramona Expressway (Figures 1 through 3: Attachment B). The APE studied as part of the cultural resources assessment can be characterized as generally flat, mostly disturbed vacant land. The project will include the construction of a 428,730 square foot industrial building with approximately 25,000 square feet of potential office space, associated tractor-trailer loading docks, parking, and infrastructure; the off-site improvements include driveway access that connects to the Indian Avenue and Perry Street intersection.

IV. SCOPE OF WORK

In order to determine the presence of cultural resources within the proposed project and off-site driveway improvement area, the archaeological investigation consisted of the following tasks:

- 1) An archaeological records search was conducted by BFSa at the EIC at UCR to gather any information regarding recorded cultural resources within or adjacent to the project and off-site driveway improvement area.

- 2) The initial archaeological survey of the property was accomplished by conducting a structured intensive reconnaissance that followed survey transects, which were parallel to the existing street directions. All areas of disturbed ground and any rodent burrows were analyzed for evidence of buried archaeological deposits.
- 3) This archaeological technical report was prepared to present the results of the field survey, impact analysis, and presentation of any mitigation measures required for project approval.

Research Goals

The primary goal of the research design is to attempt to understand the way in which humans have used the land and resources within the project area over time, as well as to aid in the determination of resource significance. For the current project and off-site driveway improvement area, the study area under investigation is the west-central portion of Riverside County. The scope of work for the archaeological program conducted for the IDI Project included a survey of the 24.2-acre project and 2.64-acres off-site driveway improvement area. Given the area involved and the narrow focus of the cultural resources study, the research design for this project and off-site driveway improvement area was necessarily limited and general in nature. Since the main objective of the investigation was to identify the presence of and potential impacts to cultural resources, the goal here is not necessarily to answer wide-reaching theories regarding the development of early southern California, but to investigate the role and importance of the identified resources. Although survey-level investigations are limited in terms of the amount of information available, several specific research questions were developed that could be used to guide the initial investigations of any observed cultural resources. The following research questions take into account the size and location of the project and off-site driveway improvement area.

Research Questions:

- Can located cultural resources be situated with a specific time period, population, or individual?
- Do the types of located cultural resources allow a site activity/function to be determined from a preliminary investigation? What are the site activities? What is the site function? What resources were exploited?
- How do the located sites compare to others reported from different surveys conducted in the area?
- How do the located sites fit existing models of settlement and subsistence for valley environments of the region?

Data Needs

At the survey level, the principle research objective is a generalized investigation of

changing settlement patterns in both the prehistoric and historic periods within the study area. The overall goal is to understand settlement and resource procurement patterns of the project/off-site driveway improvement area occupants. Therefore, adequate information on site function, context, and chronology from an archaeological perspective is essential for the investigation. The fieldwork and archival research were undertaken with these primary research goals in mind:

- 1) To identify cultural resources occurring within the project and off-site driveway improvement area;
- 2) To determine, if possible, site type and function, context of the deposit, and chronological placement of each cultural resource identified;
- 3) To place each cultural resource identified within a regional perspective; and
- 4) To provide recommendations for the treatment of each of the cultural resources identified.

Applicable Regulations

Resource importance is assigned to districts, sites, buildings, structures, and objects that possess exceptional value or quality illustrating or interpreting the heritage of Riverside County in history, architecture, archaeology, engineering, and culture. A number of criteria are used in demonstrating resource importance. Specifically, criteria outlined in CEQA provide the guidance for making such a determination. The following sections detail the CEQA criteria that a resource must meet in order to be determined important.

California Environmental Quality Act

According to CEQA (§15064.5a), the term “historical resource” includes the following:

- 1) A resource listed in, or determined to be eligible by the State Historical Resources Commission for listing in, the California Register of Historical Resources (Public Resources Code SS5024.1, Title 14 CCR. Section 4850 et seq.).
- 2) A resource included in a local register of historical resources, as defined in Section 5020.1(k) of the Public Resources Code or identified as significant in an historical resource survey meeting the requirements of Section 5024.1(g) of the Public Resources Code, shall be presumed to be historically or culturally significant. Public agencies must treat any such resource as significant unless the preponderance of evidence demonstrates that it is not historically or culturally significant.
- 3) Any object, building, structure, site, area, place, record, or manuscript, which a lead agency determines to be historically significant or significant in the architectural, engineering, scientific, economic, agricultural, educational, social, political, military, or cultural annals of California may be considered to be an historical resource, provided the lead agency’s determination is supported by substantial evidence in light of the

whole record. Generally, a resource shall be considered by the lead agency to be “historically significant” if the resource meets the criteria for listing on the California Register of Historical Resources (Public Resources Code SS5024.1, Title 14, Section 4852) including the following:

- a) Is associated with events that have made a significant contribution to the broad patterns of California’s history and cultural heritage;
 - b) Is associated with the lives of persons important in our past;
 - c) Embodies the distinctive characteristics of a type, period, region, or method of construction, or represents the work of an important creative individual, or possesses high artistic values; or
 - d) Has yielded, or may be likely to yield, information important in prehistory or history.
- 4) The fact that a resource is not listed in, or determined eligible for listing in the California Register of Historical Resources, not included in a local register of historical resources (pursuant to Section 5020.1(k) of the Public Resources Code), or identified in an historical resources survey (meeting the criteria in Section 5024.1(g) of the Public Resources Code) does not preclude a lead agency from determining that the resource may be an historical resource as defined in Public Resources Code Section 5020.1(j) or 5024.1.

According to CEQA (§15064.5b), a project with an effect that may cause a substantial adverse change in the significance of an historical resource is a project that may have a significant effect on the environment. CEQA defines a substantial adverse change as:

- 1) Substantial adverse change in the significance of an historical resource means physical demolition, destruction, relocation, or alteration of the resource or its immediate surroundings such that the significance of an historical resource would be materially impaired.
- 2) The significance of an historical resource is materially impaired when a project:
 - a) Demolishes or materially alters in an adverse manner those physical characteristics of an historical resource that convey its historical significance and that justify its inclusion in, or eligibility for, inclusion in the California Register of Historical Resources; or
 - b) Demolishes or materially alters in an adverse manner those physical characteristics that account for its inclusion in a local register of historical resources pursuant to Section 5020.1(k) of the Public Resources Code or its

identification in an historical resources survey meeting the requirements of Section 5024.1(g) of the Public Resources Code, unless the public agency reviewing the effects of the project establishes by a preponderance of evidence that the resource is not historically or culturally significant; or,

- c) Demolishes or materially alters in an adverse manner those physical characteristics of an historical resource that convey its historical significance and that justify its eligibility for inclusion in the California Register of Historical Resources as determined by a lead agency for purposes of CEQA.

Section 15064.5(c) of CEQA applies to effects on archaeological sites and contains the following additional provisions regarding archaeological sites:

- 1) When a project will impact an archaeological site, a lead agency shall first determine whether the site is an historical resource, as defined in subsection (a).
- 2) If a lead agency determines that the archaeological site is an historical resource, it shall refer to the provisions of Section 21084.1 of the Public Resources Code, Section 15126.4 of the guidelines, and the limits contained in Section 21083.2 of the Public Resources Code do not apply.
- 3) If an archaeological site does not meet the criteria defined in subsection (a), but does meet the definition of a unique archaeological resource in Section 21803.2 of the Public Resources Code, the site shall be treated in accordance with the provisions of Section 21083.2. The time and cost limitations described in Public Resources Code Section 21083.2 (c-f) do not apply to surveys and site evaluation activities intended to determine whether the project location contains unique archaeological resources.
- 4) If an archaeological resource is neither a unique archaeological nor historical resource, the effects of the project on those resources shall not be considered a significant effect on the environment. It shall be sufficient that both the resource and the effect on it are noted in the Initial Study or EIR, if one is prepared to address impacts on other resources, but they need not be considered further in the CEQA process.

Section 15064.5 (d) and (e) contain additional provisions regarding human remains. Regarding Native American human remains, paragraph (d) provides:

- (d) When an initial study identifies the existence of, or the probable likelihood, of Native American human remains within the project, a lead agency shall work with the appropriate Native Americans as identified by the Native American Heritage Commission (NAHC) as provided in Public Resources Code SS5097.98. The applicant may develop an agreement for treating or disposing of, with appropriate dignity, the human remains and any items associated with Native American burials with the

appropriate Native Americans as identified by the NAHC. Action implementing such an agreement is exempt from:

- 1) The general prohibition on disinterring, disturbing, or removing human remains from any location other than a dedicated cemetery (Health and Safety Code Section 7050.5).
- 2) The requirement of CEQA and the Coastal Act.

V. RESULTS OF STUDY

Background Research and Results of Record Searches

BFSA conducted a records search at the EIC at UCR (Confidential Appendix). Although no resources were recorded within the project boundaries or off-site driveway improvement area, the search results identified 18 cultural resource properties located within one mile of the project and off-site driveway improvement area (Table 1). Most of the recorded resources are historic sites mainly associated with the agricultural history of the area. The one prehistoric resource near the project and off-site driveway improvement area is a bedrock milling site located approximately one mile east of the APE.

Table 1
 Previously Recorded Archaeological Sites
 Within a One-Mile Radius of the Project and Off-Site Driveway Improvement Area

Site Number	Site Description
RIV-7758	Prehistoric bedrock milling site
RIV-5516H	Historic well casing (1941)
RIV-6726H	Historic Colorado River Aqueduct and road alignment
RIV-7744	Perris Indian School (1892 to 1904); Smith-Lowery Farm dating to circa 1910
RIV-8222	Historic structure pads and agricultural remnants
RIV-8312	Historic water reservoir and electric pump (1950)
RIV-8389	Historic farm equipment
RIV-10,111	Historic homestead and water system circa 1930s to 1950s
RIV-10,260	Historic irrigation system remnants post-1913
P-33-007623	Historic railroad dining car
P-33-007674	Val Verde Elementary School (1911 to 1960)
P-33-008699	Historic reservoir remnants
P-33-008700	Historic standpipe remnants
P-33-008703	Historic foundation
P-33-015854	Historic standpipe and well remnants

Site Number	Site Description
P-33-024092	Historic standpipes
P-33-024867	Historic Lateral B-Oleander Channel segment circa 1950s
P-33-024868	Historic road

The records search results also indicated that there have been a total of 41 cultural resource studies conducted within a one-mile radius of the project and off-site driveway improvement area, six of which covered portions of the current project (Love and Tang 1999; Harrison 2003; Tang et al. 2007; Fulton 2014; Ballester 2015; Jew and McDougall 2017). Although previous studies have included portions of the APE, the entire property and off-site driveway improvement area has never been surveyed for cultural resources. Love and Tang (1999) surveyed an east to west trending storm drain corridor through the southern portion of the property, while Fulton (2014) focused on a linear alignment that extended through the northern portion of the APE. The Harrison (2003) study included a due diligence assessment of the southern half of the current APE, but the scope of that project did not include a survey of the property. The Tang et al. (2007) study was a large overview of resources within the North Perris Industrial Specific Plan; as such, it also did not directly survey or discuss the current APE. The Ballester (2015) study is an archaeological monitoring report mainly associated with development of the property directly west of the APE; however, as part of the Ballester study, the northern half of the IDI Project property was graded and monitored for archaeological resources. Finally, Jew and McDougall (2017) surveyed a property to the north of the project.

BFSA also reviewed the following historic sources at the EIC:

- The National Register of Historic Places (NRHP) Index
- The Office of Historic Preservation (OHP), Archaeological Determinations of Eligibility
- The OHP, Directory of Properties in the Historic Property Data File
- The 30' USGS *Elsinore* topographic map (1901)

None of these additional sources identified any potential resources within the APE; however, the 30' USGS *Elsinore* topographic map does show a structure located immediately adjacent to the northwestern boundary of the subject property.

Because the 1901 30' USGS *Elsinore* topographic map shows sparse amounts of residences amongst agricultural land in the vicinity of the subject property and off-site driveway improvement area, additional historic maps and aerial photographs were obtained. An aerial photograph of the project and off-site improvements area vicinity from 1938 does not show any farmhouses within APE, but does show a possible corral or pond in the northwest corner of the subject property. The 1943 15' USGS *Perris* quadrangle and an aerial photograph from 1949 show structures likely representing a ranch in the northwest of the APE where the pond or corral feature was located

previously. Aerial photographs from 1949 also show the addition of an agricultural access road extending in an east to west trajectory separating the property the northern and southern half of the APE. The 1953 aerial photograph shows improvements to the access road as well as the addition of a possible irrigation feature just south of the access road in the southeastern portion of the property. Subsequent aerial photographs show that by the mid-1960s, the ranch complex on the northern half of the property had been removed and the APE consisted solely of agricultural fields identified in the southern half. Soil stockpiles appear within the off-site improvement area on the aerial photographs sometime between 1978 and 1997, but are removed after the realignment of Indian Avenue in 2011 to 2012.

As aerial photographs and topographic maps show the use of the property and off-site driveway improvement area for agriculture throughout twentieth century, additional focused property research was conducted utilizing records available from the Bureau of Land Management (BLM) and County of Riverside Archives. BLM land records indicate that the entire APE was originally transferred to Beverly Stratton on August 20, 1890. Stratton's property was comprised of over 162 acres and included the entire APE along with the adjacent northwest quarter of Section 6. When subdivided by the Perris Land Company in 1891 under the Riverside Tract, the APE was situated within Lots 4, 5, and 6 of Block 11.

Records between the date of the initial subdivision of the Riverside Tract and 1931 were not available for the property. However, by 1932, the northern portion of the APE (Lot 4) was owned by K.G. Stewart, while the southern half of the APE (Lots 5 and 6) were owned by William Coply and Fred and Wp. Carter, respectively. Property values indicate that it is likely the structure identified on Lot 4 had already been constructed by 1932. The owners of the properties did not change until the early 1940s, when Lot 4 was sold to Gardner Hotchkis in 1942 and William and Fred Coply purchased Lot 6 in 1941.

Lot 4 would change hands throughout the twentieth century with a new owner almost every year. Lots 5 and 6 were sold by the Coplys in 1943. By this time, the Coplys had consolidated their property with two other parcels located to the south, across what is now the Ramona Expressway. Eventually, by 1951, John (Jean) Coudures and his wife Marie had purchased Lots 5 and 6. Land values indicate that the possible irrigation feature identified on the 1953 aerial photograph was likely constructed in 1952. The Coudures owned the southern half of the APE throughout much of the mid-twentieth century.

Both John and Marie Coudures were immigrants from France coming to the United States in 1910 and 1903, respectively. John met Marie while working on a sheep ranch where she was a cook and they were married in 1915. In 1928, they moved to Perris, setting up their own ranching operation centrally located at Perris Boulevard and Morgan Street, about 1.25 miles from the current subject property. The Coudures farmed and raised sheep up until the 1960s when their son, John Coudures, Jr., began to take a more active role in managing family business. In 1965, John Jr. had a home built for Marie across the street from the APE along what is now the Ramona Expressway. The Coudures family at one time farmed up to 15,000 acres in the Perris area, mainly

growing alfalfa, potatoes, and sugar beets. John Jr. worked closely with his family operating the farm and continued managing the operation after his parents passed away in the 1970s. Starting in the early 1980s, the Coudures family began to back away from farming leasing out or selling most of their fields, including the current APE, while developing others into commercial properties (City of Perris 2011).

In recent years, the areas surrounding the property have been developed. Indian Street, which was originally called Indian Avenue, was originally located along the western boundary of the APE. However, in 2011 to 2012, the street was realigned and is now situated along the eastern boundary of the APE. Further, the adjacent parcels directly to the west were developed into a large warehouse property in 2015. In addition, the current APE was extensively impacted during the 2015 development of the adjacent parcel to the west. As visible on aerial photographs from 2011 through 2016, the access road first identified on the mid-twentieth century aerial photographs appears to have been utilized and impacted during the 2015 improvements. Further, the location the northern portion of the APE, where structures were previously mapped in the 1940s to 1960s, was entirely impacted through grading for the adjacent development (Ballester 2015).

BFSA also requested a records search of the Sacred Lands File (SLF) of the NAHC, which did not indicate the presence of any sacred sites or locations of religious or ceremonial importance within the APE. In accordance with the recommendations of the NAHC, BFSA contacted all Native American consultants listed in the NAHC response letter and received three responses. The Cabazon Band of Mission Indians indicated the project is located outside of the Tribe's current reservation boundaries and not within its traditional use area. The Viejas Band of Kumeyaay Indians indicated the project area has little cultural significance or ties to Viejas. The Pechanga Band of Luiseño Mission Indians indicated that, although the project area is not within their reservation lands, it is within their ancestral territory, and expressed interest in participating in the project. Original correspondence is provided in the Confidential Appendix.

The potential for cultural resources to be present within a given area is usually indicated by known settlement patterns, which in western Riverside County were focused around fresh water resources and a food supply. The APE does not contain any permanent water sources or natural features that would have been advantageous to the prehistoric occupation in the region. Further, the records search and literature review suggest that there is a low potential for cultural resources to be located within the APE. The results of the records search suggest that if present, historic resources should be the primary site type within the property given the historic settlement of the region and the limited number of prehistoric sites recorded near the project.

Field Reconnaissance

Principal Investigator Brian F. Smith and Project Archaeologist Andrew Garrison directed the pedestrian survey of the APE by senior field archaeologist Clarence Hoff on May 23, 2018. Additionally, on January 25, 2019, Andrew Garrison conducted a pedestrian survey of the off-site driveway improvement area. Aerial photographs, maps, and compass permitted orientation and

location of project and off-site driveway improvement area boundaries. Where possible, narrow transect paths were employed to ensure maximum lot coverage. All exposed ground was inspected for cultural materials. Ground visibility was generally good; however, hindered at times by tall non-native weeds and grasses, mainly stinknet, mustard plant, and fiddleneck. A survey form, field notes, and photographs documented the survey work undertaken.

At the time of the surveys, the proposed warehouse site and off-site improvement area were characterized as flat, previously disked, and disturbed parcels (Plates 1 through 3). During the survey, particular attention was paid to areas with exposed ground surfaces, such as rodent burrows and areas around the base of vegetation. Disturbances to the proposed warehouse site include dirt utility access roads along the northern and western perimeters; a concrete “U”-ditch along the southern boundary; storm drain culverts situated just outside of the southeastern and southwestern corners of the property; and piles of dumped dirt, concrete, and modern construction debris within the northern half of the APE. Disturbances in the off-site driveway improvement area include piles of dumped dirt and tire tracks connecting the proposed warehouse location and Indian Avenue. All of the aforementioned disturbances are modern, as identified within recent aerial photographs available from Google Earth, and are associated with the development of adjacent parcel to the west in 2015, the current construction of a warehouse on an adjacent parcel to the northeast, the realignment of Indian Avenue in 2011 to 2012, and improvements to Ramona Expressway throughout the early 2000s.



Plate 1: Overview of the northeast corner of the proposed warehouse site, facing southwest.



Plate 2: Overview of the southeast corner of the proposed warehouse site, facing northwest.



Plate 3: Overview of the off-site driveway improvement area, facing southwest.

Also noted during the survey of the proposed warehouse site were the remains of a loose gravel/asphalt road which crosses the property in an east to west trajectory and a five-foot by five-foot concrete (resurfaced) slab with a modern galvanized steel standpipe/spigot (Plate 4). All elements of the gravel road and concrete slab and spigot appear actively maintained and modern. However, aspects of both features are visible on aerial photographs from 1949/1953: the access road follows the alignment identified on the historic aerial photograph, and a possible irrigation feature is present in the general area of the concrete slab. As such, they were recorded on the appropriate 523 series DPR forms and have been given the permanent site number P-33-028621 (Confidential Appendix). Due to their continued utilization and modification, Site P-33-028621 does not qualify as a significant resource under CEQA, but does further illustrate the use of the property for agriculture during the late twentieth century. Although the survey did identify historic features that likely date to the early 1950s, no archaeological sites or artifacts were discovered.



Plate 4: Overview of the modern standpipe within the proposed warehouse site, facing west.

Focused property research indicates that the gravel road and irrigation feature are mid-twentieth century agricultural features located at the periphery of the Coudures agricultural property. Although the Coudures family owned a considerable amount of land in the area, these two features do not represent any significant aspect of their former land holdings. Further, research into other individuals who owned portions of the APE before the Coudures family failed to identify anybody of importance to the region. The gravel access road and concrete slab with a modern

spigot are common examples of features associated with the agricultural use of the area during the late twentieth century. They are not associated with the early agricultural development of the area nor instrumental to the early development of the Coudures agricultural properties, as there is no record of them prior to 1949/early 1950s. Further, these two features possess no further research potential beyond their recordation and do not maintain any integrity, as they have obviously been continuously modified and upgraded through the decades to facilitate their steady use. Therefore, the features do not qualify as significant resources under CEQA.

VI. RECOMMENDATIONS

The cultural resources study for the IDI Project, including the off-site driveway improvement area, did not identify any significant cultural resources within the property. The EIC records search listed 18 cultural resource sites within a one-mile radius of the project and off-site driveway improvement area; however, no resources have been recorded within the APE. Furthermore, 41 studies have been conducted within one mile of the project and off-site driveway improvement area, including six that intersect the APE (Love and Tang 1999; Harrison 2003; Tang et al. 2007; Fulton 2014; Ballester 2015; Jew and McDougall 2017). The previous studies on and near the APE did not identify any resources within the current project and off-site driveway improvement area. During the current survey, two historic features, a loose gravel access road and a concrete slab with a modern spigot likely dating to the early 1950s, were identified within the APE. However, they do not qualify as significant resources under CEQA. Therefore, as a result of the documented land use of the property, the research results, and the current archaeological survey, no significant cultural resources are associated with the project and the off-site driveway improvement area.

Although no significant archaeological resources were discovered on the property during the field survey, there still remains the potential for resources to be discovered during project construction activities. As a result, the City of Perris requires the monitoring of construction sites by a professional archaeologist. The project is subject to the cultural resources mitigation measures from the Perris Valley Commerce Center Specific Plan (PVCCSP) Environmental Impact Report as updated by the City. The current measures are as follows:

1. The project developer shall retain a professional archaeologist prior to the issuance of grading permits. The task of the archaeologist shall be to monitor the initial ground-altering activities at the subject site and off-site project improvement areas for the unearthing of previously unknown archaeological and/or cultural resources. Selection of the archaeologist shall be subject to the approval of the City of Perris Director of Development Services and no grading activities shall occur at the site or within the off-site project improvement areas until the archaeologist has been approved by the City. The archaeological monitor shall be responsible for maintaining daily field notes and a

photographic record, and for reporting all finds to the developer and the City of Perris in a timely manner. The archaeologist shall be equipped to record and salvage cultural resources that may be unearthed during grading activities. The archaeologist shall be empowered to temporarily halt or divert grading equipment to allow recording and removal of the unearthed resources.

In the event that archaeological resources are discovered at the project site or within the off-site project improvement areas, the handling of the discovered resources will differ. However, it is understood that all artifacts, with the exception of human remains and related grave goods or sacred/ceremonial objects, belong to the property owner. All artifacts discovered at the development site shall be inventoried and analyzed by the professional archaeologist. If any artifacts of Native American origin are discovered, all activities in the immediate vicinity of the find (within a 50-foot radius) shall stop and the project proponent and project archaeologist shall notify the City of Perris Planning Division, the Pechanga Band of Luiseño Indians, the Soboba Band of Luiseño Indians, and any other tribes identified by the NAHC as being affiliated with the area. A designated Native American observer from one of the tribes identified by the NAHC as being affiliated with the area shall be retained to help analyze the Native American artifacts for identification as everyday life and/or religious or sacred items, cultural affiliation, temporal placement, and function, as deemed possible. The significance of Native American resources shall be evaluated in accordance with the provisions of CEQA and shall consider the religious beliefs, customs, and practices of the Luiseño tribes. All items found in association with Native American human remains shall be considered grave goods or sacred in origin and subject to special handling.

Native American artifacts that are relocated/reburied at the project site would be subject to a fully executed relocation/reburial agreement with the assisting Native American tribes or bands. This shall include measures and provisions to protect the reburial area from any future impacts. Relocation/reburial shall not occur until all cataloging and basic recordation have been completed. Native American artifacts that cannot be avoided or relocated at the project site shall be prepared in a manner for curation at an accredited curation facility in Riverside County that meets federal standards per 36 CFR Part 79 and makes the artifacts available to other archaeologists/researchers for further study such as UCR Archaeological Research Unit or the Western Science Center (WSC) curation facility in Hemet, California. If more than one Native American group is involved with the project and they cannot come to an agreement as to the disposition of Native American artifacts, they shall be curated at the WSC by default. The archaeological consultant shall deliver the Native American artifacts,

including title, to the accredited curation facility within a reasonable amount of time along with the fees necessary for permanent curation. Non-Native American artifacts shall be inventoried, assessed, and analyzed for cultural affiliation, personal affiliation (prior ownership), function, and temporal placement. Subsequent to analysis and reporting, these artifacts will be subjected to curation or returned to the property owner, as deemed appropriate.

Once grading activities have ceased or the archaeologist, in consultation with the designated Native American observer, determines that monitoring is no longer necessary, monitoring activities can be discontinued following notification to the City of Perris Planning Division. A report of findings, including an itemized inventory of recovered artifacts, shall be prepared upon completion of the steps outlined above. The report shall include a discussion of the significance of all recovered artifacts. The report shall provide evidence that any Native American and non-Native American archaeological resources recovered during project development have been avoided, reburied, or curated at an accredited curation facility. A copy of the report shall also be filed with the EIC and submitted to the Pechanga Band of Luiseño Indians, the Soboba Band of Luiseño Indians, and any other Native American groups involved with the project.

2. In the event that human remains (or remains that may be human) are discovered at the project site or the off-site driveway improvement area during grading or earthmoving, the construction contractors, the project archaeologist and/or designated Native American observer shall immediately stop all activities within 100 feet of the find. The project proponent shall then inform the Riverside County medical examiner and the City of Perris Planning Division immediately, and the medical examiner shall be permitted to examine the remains as required by California Health and Safety Code Section 7050.5(b).

If the medical examiner determines that the remains are of Native American origin, the coroner would notify the NAHC, which will identify the “Most Likely Descendent” (MLD). Despite the affiliation with any Native American representatives at the site, the NAHC’s identification of the MLD will stand. The MLD shall be granted access to inspect the site of the discovery of Native American human remains and may recommend to the project proponent means for treatment or disposition, with appropriate dignity of the human remains and any associated grave goods. The MLD shall complete his or her inspection and make recommendations or preferences for treatment within 48 hours of being granted access to the site. The disposition of the remains will be determined in consultation between the project proponent and the

MLD. In the event that the project proponent and the MLD are in disagreement regarding the disposition of the remains, California state law will apply and the mediation and decision process will occur with the NAHC (see Public Resources Code Section 5097.98(e) and 5097.94(k)).

The specific locations of Native American burials and reburials will be proprietary and not disclosed to the general public. The locations will be documented by the consulting archaeologist in conjunction with the various stakeholders and a report of findings will be filed with the EIC.

If the human remains are determined to be other than Native American in origin, but still of archaeological value, the remains will be recovered for analysis and subject to curation or reburial at the expense of the project proponent. If deemed appropriate, the remains will be recovered by the Riverside County medical examiner and handled through the medical examiner's office. Coordination with the Riverside County medical examiner would be through the City of Perris and in consultation with the various stakeholders.

VII. CERTIFICATION

I hereby certify that the statements furnished above and in the attached exhibits present the data and information required for this archaeological report, and that the facts, statements, and information presented are true and correct to the best of my knowledge and belief, and have been compiled in accordance with CEQA criteria as defined in Section 15064.5.



Brian F. Smith
Principal Investigator

February 7, 2019

Date

VIII. ATTACHMENT A

References

Resumes

REFERENCES

American Local History Network: Riverside County, California

- 1998 American Local History Network's Page for Riverside County, California. Electronic document, <http://www.usgennet.org/usa/ca/county/riverside/>, accessed March 28, 2006.

Ballester, Daniel

- 2015 Archaeological/Paleontological Monitoring Program ORE Industrial; Perris Valley Logistics; Tentative Parcel Map No. 36010 Project in the City of Perris, Riverside County, California. CRM Tech. Unpublished report on file at the Eastern Information Center at University of California at Riverside, Riverside, California.

Bean, Lowell John

- 1978 Cahuilla. In *California*, edited by Robert F. Heizer, pp. 575-587. Handbook of North American Indians, Vol. 8. William C. Sturtevant, general editor, Smithsonian Institution, Washington, D.C.

Bean, Lowell John and Florence C. Shipek

- 1978 Luiseño. In *California*, edited by R.F. Heizer, pp. 550-563. Handbook of North American Indians, Vol. 8. William C. Sturtevant, general editor, Smithsonian Institution, Washington, D.C.

Bean, Lowell John and Charles R. Smith

- 1978 Serrano. In *California*, edited by R.F. Heizer. Handbook of North American Indians, Vol. 8. William C. Sturtevant, general editor, Smithsonian Institution, Washington, D.C.

Brian F. Smith and Associates, Inc.

- Various dates. Research library holdings including Sanborn maps, USGS maps, aerial photographs, city directories, published regional histories, and geologic and paleontological references.

Brigandi, Phil

- 1998 *Temecula: At the Crossroads of History*. Heritage Media Corporation, Encinitas, California.

Byrd, Brian F.

- 1998 Harvesting the Littoral Landscape During the Late Holocene: New Perspectives from Northern San Diego County. *Journal of California and Great Basin Anthropology* 20(2):195-218.

City of Perris

- N.d History. Electronic document, <http://www.cityofperris.org/about/history.html>, accessed January 23, 2019.

2011 Harvest Landing Specific Plan. Electronic document, <http://www.cityofperris.org/city-hall/specific-plans/Harvest-LandingSpecificPlan.pdf>, accessed January 24, 2019.

2013 About Perris. Electronic document, <http://www.cityofperris.org>, accessed August 1, 2014.

Cook, Sherburne F.

1976 *The Conflict Between the California Indian and White Civilization*. University of California Press, Berkeley and Los Angeles, California.

Environmental Science Associates

2016 DWR Perris Dam Emergency Release Facility Draft Environmental Impact Report. Prepared for the California Department of Water Resources. Electronic document, https://water.ca.gov/LegacyFiles/lakeperris/DEIR/3-9_Hydrology.pdf, accessed January 23, 2019.

Erlandson, Jon M. and Roger H. Colten (editors)

1991 An Archaeological Context for Archaeological Sites on the California Coast. In *Hunter-Gatherers of Early Holocene Coastal California*. Perspectives in California Archaeology, Volume 1, Institute of Archaeology, University of California, Los Angeles.

Fagan, B.

1991 *Ancient North America: The Archaeology of a Continent*. Thames and Hudson. London.

Fulton, Phil

2014 Discovery and Monitoring Plan for the Mid County Parkway. LSA Associates Inc. Unpublished report on file at the Eastern Information Center at University of California at Riverside, Riverside, California.

Gallegos, Dennis

1987 A Review and Synthesis of Environmental and Cultural Material for the Batiquitos Lagoon Region. In *San Dieguito-La Jolla: Chronology and Controversy*, edited by Dennis Gallegos. San Diego County Archaeological Society Research Paper No. 1.

1992 Patterns and Implications of Coastal Settlement in San Diego County: 9,000 to 1,300 Years Ago. In *Essays on the Prehistory of Maritime California*, edited by Terry Jones. Center for Archaeological Research, Davis, California.

Gallegos, Dennis R. and Carolyn E. Kyle

1988 Five Thousand Years of Maritime Subsistence at Ballast Point Prehistoric Site SDI-48 (W-164) San Diego, California. Unpublished report on file at the South Coastal Information Center at San Diego State University, San Diego, California.

Handley, C.

- 1967 The Sun City Story. *Sun City News*, Sun City, California.

Harrison, Jim

- 2003 Letter Report: Biological and Cultural Resources Due Diligence Regarding the 500-Acre Watson Land Company-Perris Property in Riverside County, California. LSA Associate Inc., Irvine, California. Unpublished report on file at the Eastern Information Center at University of California Riverside, Riverside, California.

Hoffman, Ogden

- 1862 Reports of Land Cases Determined in the United States District Court for the Northern District of California, Numa Hubert, San Francisco.

Koerper, Henry, C., Jonathan E. Ericson, Christopher E. Drover, and Paul E. Langenwaller, II

- 1986 Obsidian Exchange in Prehistoric Orange County. *Pacific Coast Archaeological Society Quarterly* 22 (1):33-69.

Kowta, Makoto

- 1969 The Sayles Complex: A Late Millingstone Assemblage from Cajon Pass, and the Econological Implications of its Scraper Planes. *University of California Prehistory* (6), Salina, California.

Kroeber, A.L.

- 1976 *Handbook of the Indians of California*. Reprinted. Dover Editions, Dover Publications, Inc., New York. Originally published 1925, Bulletin No. 78, U.S. Government Printing Office, Washington, D.C.

Laylander, Don (editor)

- 1985 Some Linguistic Approaches to Southern California's Prehistory. *San Diego State University Cultural Resource Management Casual Papers* 2(1):14-58.

Love, Bruce and Bai "Tom" Tang

- 1999 Identification and Evaluation of Historic Properties Perris Valley Industrial Corridor Infrastructure Project Near the City of Perris, Riverside County, California. CRM Tech. Unpublished report on file at the Eastern Information Center at University of California at Riverside, Riverside, California.

Martin, P.S.

- 1967 Prehistoric Overkill. In *Pleistocene Extinctions: The Search for a Cause*, edited by P. Martin and H.E. Wright. Yale University Press: New Haven.
- 1973 The Discovery of America. *Science* 179(4077): 969-974.

Masters, Patricia M.

- 1983 Detection and Assessment of Prehistoric Artifact Sites off the Coast of Southern California. In *Quaternary Coastlines and Marine Archaeology: Towards the*

- Prehistory of Land Bridges and Continental Shelves*, edited by P.M. Masters and N.C. Flemming, pp. 189-213. Academic Press, London.
- Meighan, Clement W.
1954 A Late Complex in Southern California Prehistory. *Southwestern Journal of Anthropology* 10(2).
- Metropolitan Water District
n.d Who We Are: 75 Years. Electronic document, <http://www.mwdh2o.com/WhoWeAre/History/75years/>, accessed January 23, 2019.
- Miller, J.
1966 *The Present and Past Molluscan Faunas and Environments of Four Southern California Coastal Lagoons*. Master's thesis on file at the University of California at San Diego, San Diego, California.
- Moratto, Michael J.
1984 *California Archaeology*. Academic Press, New York.
- Moriarty, James R., III
1966 Culture Phase Divisions Suggested by Topological Change Coordinated with Stratigraphically Controlled Radiocarbon Dating in San Diego. *Anthropological Journal of Canada* 4(4):20-30.
- Moss, M.L. and J. Erlandson
1995 Reflections on North American Coast Prehistory. *Journal of World Prehistory* 9(1):1-46.
- Pourade, Richard F.
1964 *The Glory Years*. Union-Tribune Publishing Company, San Diego.
- Ramirez, Ruben S., Jr.
2016 General MSHCP Habitat Assessment/Constraints Analysis for the CR&R BioGas Service Pipeline Project Site, City of Perris, California. Cadre Environmental, c/o Brian F. Smith and Associates, Inc. Prepared for CR&R Environmental Services, Inc. Unpublished report on file at Brian F. Smith and Associates, Inc., Poway, California.
- Raven-Jennings, Shelly, Brian F. Smith and Johnna L. Buysse
1996 The Results of a Cultural Resource Study at the 4S Ranch, Rancho Bernardo, County of San Diego. Unpublished report on file at the South Coastal Information Center at San Diego State University, San Diego, California.
- Riverside County
N.d. Welcome to Riverside County, California: Riverside County History. Electronic document, http://www.co.riverside.ca.us/county_info/history.asp, accessed March 28, 2006.

Robinson, John W.

- 1997 Rancho San Jacinto Viejo and the Estudillo Family. In *Rancho Days in Southern California*, (Los Angeles: Los Angeles Corral of the Westerners), pp. 143-161.

Rogers, Malcolm J.

- 1939 Early Lithic Industries of the Lower Basin of the Colorado River and Adjacent Desert Areas. In *San Diego Museum Papers* (3) [1989 printing]. San Diego Museum of Man, San Diego, California.

Rolle, Andrew F.

- 1969 *California: A History* (Second Edition). Thomas Y. Crowell Company, New York.

Shumway, George, Carl L. Hubbs, and James R. Moriarty, III

- 1961 Scripps Estate Site, San Diego, California: A La Jolla Site Dated 5,460-7,370 Years Before the Present. *Annals of the New York Academy of Sciences* 93(3).

Smith, Brian F. and James R. Moriarty, III

- 1985 The Archaeological Excavations at Batiquitos Pointe and Batiquitos Bluffs. Unpublished report on file at the City of Carlsbad, Carlsbad, California.

Strong, William Duncan

- 1929 Aboriginal Society in Southern California. *University of California Publications in American Archaeology and Ethnology* 26(1).

Sutton, Mark Q.

- 2009 People and Language: Defining the Takic Expansion into Southern California. *Pacific Coast Archaeological Society Quarterly* 41(2&3): 33-93.

- 2010 The Del Rey Tradition and its Place in the Prehistory of Southern California. *Pacific Coast Archaeological Society Quarterly* 44(2):1-54.

- 2011a The Palomar Tradition and Its Place in the Prehistory of Southern California. *Pacific Coast Archaeological Society Quarterly* 44(4):1-74.

- 2011b *A Prehistory of North America*. Routledge, New York.

Sutton, Mark Q. and Jill K. Gardener

- 2010 Reconceptualizing the Encinitas Tradition of Southern California. *Pacific Coast Archaeological Society Quarterly* 42(4):1-64.

Tang, Bai “Tom”, Michael Hogan, Clarence Bodmer, Josh Smallwood, and Melissa Hernandez

- 2007 Cultural Resources Technical Report, North Perris Industrial Specific Plan, City of Perris, Riverside County, California. CRM Tech. Unpublished report on file at Eastern Information Center at University of California Riverside, Riverside, California.

True, Delbert L.

1958 An Early Complex in San Diego County, California. *American Antiquity* 23(3).

1980 The Pauma Complex in Northern San Diego County. *The Journal of New World Archaeology* 3(4):1-39

Wallace, William J.

1955 A Suggested Chronology for Southern California Coastal Archaeology. *Southwestern Journal of Anthropology* 11:214-230.

Warren, Claude N.

1968 Cultural Tradition and Ecological Adaptation on the Southern Coast. In *Archaic Prehistory in the Western United States*, edited by C.I. Williams. *Eastern New Mexico University Contributions in Anthropology* 1(3): 1-14.

Warren, Claude N. and D.L. True

1961 The San Dieguito Complex and its Place in California Prehistory. *Archaeological Survey Annual Report 1960-1961*. University of California Press, Los Angeles, California.

Warren, Claude N., D.L. True, and Ardith A. Eudey

1961 Early Gathering Complexes of Western San Diego County: Results and Interpretations of an Archaeological Survey. *Archaeological Survey Annual Report 1960-1961*. University of California, Los Angeles.

Brian F. Smith, MA

Owner, Principal Investigator

Brian F. Smith and Associates, Inc.

14010 Poway Road • Suite A •

Phone: (858) 679-8218 • Fax: (858) 679-9896 • E-Mail: bsmith@bfsa-ca.com



Education

Master of Arts, History, University of San Diego, California	1982
Bachelor of Arts, History, and Anthropology, University of San Diego, California	1975

Professional Memberships

Society for California Archaeology

Experience

Principal Investigator Brian F. Smith and Associates, Inc.	1977–Present Poway, California
---	---

Brian F. Smith is the owner and principal historical and archaeological consultant for Brian F. Smith and Associates. Over the past 32 years, he has conducted over 2,500 cultural resource studies in California, Arizona, Nevada, Montana, and Texas. These studies include every possible aspect of archaeology from literature searches and large-scale surveys to intensive data recovery excavations. Reports prepared by Mr. Smith have been submitted to all facets of local, state, and federal review agencies, including the US Army Corps of Engineers, the Bureau of Land Management, the Bureau of Reclamation, the Department of Defense, and the Department of Homeland Security. In addition, Mr. Smith has conducted studies for utility companies (Sempra Energy) and state highway departments (CalTrans).

Professional Accomplishments

These selected major professional accomplishments represent research efforts that have added significantly to the body of knowledge concerning the prehistoric life ways of cultures once present in the Southern California area and historic settlement since the late 18th century. Mr. Smith has been principal investigator on the following select projects, except where noted.

Downtown San Diego Mitigation and Monitoring Reporting Programs: Large numbers of downtown San Diego mitigation and monitoring projects submitted to the Centre City Development Corporation, some of which included Strata (2008), Hotel Indigo (2008), Lofts at 707 10th Avenue Project (2007), Breeza (2007), Bayside at the Embarcadero (2007), Aria (2007), Icon (2007), Vantage Pointe (2007), Aperture (2007), Sapphire Tower (2007), Lofts at 655 Sixth Avenue (2007), Metrowork (2007), The Legend (2006), The Mark (2006), Smart Corner (2006), Lofts at 677 7th Avenue (2005), Aloft on Cortez Hill (2005), Front and

Beech Apartments (2003), Bella Via Condominiums (2003), Acqua Vista Residential Tower (2003), Northblock Lofts (2003), Westin Park Place Hotel (2001), Parkloft Apartment Complex (2001), Renaissance Park (2001), and Laurel Bay Apartments (2001).

Archaeology at the Padres Ballpark: Involved the analysis of historic resources within a seven-block area of the "East Village" area of San Diego, where occupation spanned a period from the 1870s to the 1940s. Over a period of two years, BFSA recovered over 200,000 artifacts and hundreds of pounds of metal, construction debris, unidentified broken glass, and wood. Collectively, the Ballpark Project and the other downtown mitigation and monitoring projects represent the largest historical archaeological program anywhere in the country in the past decade (2000-2007).

4S Ranch Archaeological and Historical Cultural Resources Study: Data recovery program consisted of the excavation of over 2,000 square meters of archaeological deposits that produced over one million artifacts, containing primarily prehistoric materials. The archaeological program at 4S Ranch is the largest archaeological study ever undertaken in the San Diego County area and has produced data that has exceeded expectations regarding the resolution of long-standing research questions and regional prehistoric settlement patterns.

Charles H. Brown Site: Attracted international attention to the discovery of evidence of the antiquity of man in North America. Site located in Mission Valley, in the city of San Diego.

Del Mar Man Site: Study of the now famous Early Man Site in Del Mar, California, for the San Diego Science Foundation and the San Diego Museum of Man, under the direction of Dr. Spencer Rogers and Dr. James R. Moriarty.

Old Town State Park Projects: Consulting Historical Archaeologist. Projects completed in the Old Town State Park involved development of individual lots for commercial enterprises. The projects completed in Old Town include Archaeological and Historical Site Assessment for the Great Wall Cafe (1992), Archaeological Study for the Old Town Commercial Project (1991), and Cultural Resources Site Survey at the Old San Diego Inn (1988).

Site W-20, Del Mar, California: A two-year-long investigation of a major prehistoric site in the Del Mar area of the city of San Diego. This research effort documented the earliest practice of religious/ceremonial activities in San Diego County (circa 6,000 years ago), facilitated the projection of major non-material aspects of the La Jolla Complex, and revealed the pattern of civilization at this site over a continuous period of 5,000 years. The report for the investigation included over 600 pages, with nearly 500,000 words of text, illustrations, maps, and photographs documenting this major study.

City of San Diego Reclaimed Water Distribution System: A cultural resource study of nearly 400 miles of pipeline in the city and county of San Diego.

Master Environmental Assessment Project, City of Poway: Conducted for the City of Poway to produce a complete inventory of all recorded historic and prehistoric properties within the city. The information was used in conjunction with the City's General Plan Update to produce a map matrix of the city showing areas of high, moderate, and low potential for the presence of cultural resources. The effort also included the development of the City's Cultural Resource Guidelines, which were adopted as City policy.

Draft of the City of Carlsbad Historical and Archaeological Guidelines: Contracted by the City of Carlsbad to produce the draft of the City's historical and archaeological guidelines for use by the Planning Department of the City.

The Mid-Bayfront Project for the City of Chula Vista: Involved a large expanse of undeveloped agricultural land situated between the railroad and San Diego Bay in the northwestern portion of the city. The study included the analysis of some potentially historic features and numerous prehistoric sites.

Cultural Resources Survey and Test of Sites Within the Proposed Development of the Audie Murphy Ranch, Riverside County, California: Project manager/director of the investigation of 1,113.4 acres and 43 sites, both prehistoric and historic—including project coordination; direction of field crews; evaluation of sites for significance based on County of Riverside and CEQA guidelines; assessment of cupule, pictograph, and rock shelter sites, co-authoring of cultural resources project report. February-September 2002.

Cultural Resources Evaluation of Sites Within the Proposed Development of the Otay Ranch Village 13 Project, San Diego County, California: Project manager/director of the investigation of 1,947 acres and 76 sites, both prehistoric and historic—including project coordination and budgeting; direction of field crews; assessment of sites for significance based on County of San Diego and CEQA guidelines; co-authoring of cultural resources project report. May-November 2002.

Cultural Resources Survey for the Remote Video Surveillance Project, El Centro Sector, Imperial County: Project manager/director for a survey of 29 individual sites near the U.S./Mexico Border for proposed video surveillance camera locations associated with the San Diego Border barrier Project—project coordination and budgeting; direction of field crews; site identification and recordation; assessment of potential impacts to cultural resources; meeting and coordinating with U.S. Army Corps of Engineers, U.S. Border Patrol, and other government agencies involved; co-authoring of cultural resources project report. January, February, and July 2002.

Cultural Resources Survey and Test of Sites Within the Proposed Development of the Menifee West GPA, Riverside County, California: Project manager/director of the investigation of nine sites, both prehistoric and historic—including project coordination and budgeting; direction of field crews; assessment of sites for significance based on County of Riverside and CEQA guidelines; historic research; co-authoring of cultural resources project report. January-March 2002.

Mitigation of An Archaic Cultural Resource for the Eastlake III Woods Project for the City of Chula Vista, California: Project archaeologist/ director—including direction of field crews; development and completion of data recovery program including collection of material for specialized faunal and botanical analyses; assessment of sites for significance based on CEQA guidelines; management of artifact collections cataloging and curation; data synthesis; co-authoring of cultural resources project report, in prep. September 2001-March 2002.

Cultural Resources Survey and Test of Sites Within the Proposed French Valley Specific Plan/EIR, Riverside County, California: Project manager/director of the investigation of two prehistoric and three historic sites—including project coordination and budgeting; survey of project area; Native American consultation; direction of field crews; assessment of sites for significance based on CEQA guidelines; cultural resources project report in prep. July-August 2000.

Cultural Resources Survey and Test of Sites Within the Proposed Lawson Valley Project, San Diego County, California: Project manager/director of the investigation of 28 prehistoric and two historic sites—including project coordination; direction of field crews; assessment of sites for significance based on CEQA guidelines; cultural resources project report in prep. July-August 2000.

Cultural Resource Survey and Geotechnical Monitoring for the Mohyi Residence Project, La Jolla, California: Project manager/director of the investigation of a single-dwelling parcel—including project coordination; field survey; assessment of parcel for potentially buried cultural deposits; monitoring of geotechnical borings; authoring of cultural resources project report. Brian F. Smith and Associates, San Diego, California. June 2000.

Enhanced Cultural Resource Survey and Evaluation for the Prewitt/Schmucker/Cavadias Project, La Jolla, California: Project manager/director of the investigation of a single-dwelling parcel—including project coordination; direction of field crews; assessment of parcel for potentially buried cultural deposits; authoring of cultural resources project report. June 2000.

Cultural Resources Survey and Test of Sites Within the Proposed Development of the Menifee Ranch, Riverside County, California: Project manager/director of the investigation of one prehistoric and five historic sites—included project coordination and budgeting; direction of field crews; feature recordation; historic structure assessments; assessment of sites for significance based on CEQA guidelines; historic research; co-authoring of cultural resources project report. February-June 2000.

Salvage Mitigation of a Portion of the San Diego Presidio Identified During Water Pipe Construction for the City of San Diego, California: Project archaeologist/director—included direction of field crews; development and completion of data recovery program; management of artifact collections cataloging and curation; data synthesis and authoring of cultural resources project report in prep. April 2000.

Enhanced Cultural Resource Survey and Evaluation for the Tyrian 3 Project, La Jolla, California: Project manager/director of the investigation of a single-dwelling parcel—included project coordination; assessment of parcel for potentially buried cultural deposits; authoring of cultural resources project report. April 2000.

Enhanced Cultural Resource Survey and Evaluation for the Lamont 5 Project, Pacific Beach, California: Project manager/director of the investigation of a single-dwelling parcel—included project coordination; assessment of parcel for potentially buried cultural deposits; authoring of cultural resources project report. April 2000.

Enhanced Cultural Resource Survey and Evaluation for the Reiss Residence Project, La Jolla, California: Project manager/director of the investigation of a single-dwelling parcel—included project coordination; assessment of parcel for potentially buried cultural deposits; authoring of cultural resources project report. March-April 2000.

Salvage Mitigation of a Portion of Site SDM-W-95 (CA-SDI-211) for the Poinsettia Shores Santalina Development Project and Caltrans, Carlsbad, California: Project archaeologist/ director—included direction of field crews; development and completion of data recovery program; management of artifact collections cataloging and curation; data synthesis and authoring of cultural resources project report in prep. December 1999-January 2000.

Survey and Testing of Two Prehistoric Cultural Resources for the Airway Truck Parking Project, Otay Mesa, California: Project archaeologist/director—included direction of field crews; development and completion of testing recovery program; assessment of site for significance based on CEQA guidelines; authoring of cultural resources project report, in prep. December 1999-January 2000.

Cultural Resources Phase I and II Investigations for the Tin Can Hill Segment of the Immigration and Naturalization Services Triple Fence Project Along the International Border, San Diego County, California: Project manager/director for a survey and testing of a prehistoric quarry site along the border—NRHP eligibility assessment; project coordination and budgeting; direction of field crews; feature recordation; meeting and coordinating with U.S. Army Corps of Engineers; co-authoring of cultural resources project report. December 1999-January 2000.

Mitigation of a Prehistoric Cultural Resource for the Westview High School Project for the City of San Diego, California: Project archaeologist/ director—included direction of field crews; development and completion of data recovery program including collection of material for specialized faunal and botanical analyses; assessment of sites for significance based on CEQA guidelines; management of artifact collections cataloging and curation; data synthesis; co-authoring of cultural resources project report, in prep. October 1999-January 2000.

Mitigation of a Prehistoric Cultural Resource for the Otay Ranch SPA-One West Project for the City of Chula Vista, California: Project archaeologist/director—included direction of field crews; development of data recovery program; management of artifact collections cataloging and curation; assessment of

site for significance based on CEQA guidelines; data synthesis; authoring of cultural resources project report, in prep. September 1999-January 2000.

Monitoring of Grading for the Herschel Place Project, La Jolla, California: Project archaeologist/monitor—included monitoring of grading activities associated with the development of a single-dwelling parcel. September 1999.

Survey and Testing of a Historic Resource for the Osterkamp Development Project, Valley Center, California: Project archaeologist/ director—included direction of field crews; development and completion of data recovery program; budget development; assessment of site for significance based on CEQA guidelines; management of artifact collections cataloging and curation; data synthesis; authoring of cultural resources project report. July-August 1999.

Survey and Testing of a Prehistoric Cultural Resource for the Proposed College Boulevard Alignment Project, Carlsbad, California: Project manager/director —included direction of field crews; development and completion of testing recovery program; assessment of site for significance based on CEQA guidelines; management of artifact collections cataloging and curation; data synthesis; authoring of cultural resources project report, in prep. July-August 1999.

Survey and Evaluation of Cultural Resources for the Palomar Christian Conference Center Project, Palomar Mountain, California: Project archaeologist—included direction of field crews; assessment of sites for significance based on CEQA guidelines; management of artifact collections cataloging and curation; data synthesis; authoring of cultural resources project report. July-August 1999.

Survey and Evaluation of Cultural Resources at the Village 2 High School Site, Otay Ranch, City of Chula Vista, California: Project manager/director —management of artifact collections cataloging and curation; assessment of site for significance based on CEQA guidelines; data synthesis; authoring of cultural resources project report. July 1999.

Cultural Resources Phase I, II, and III Investigations for the Immigration and Naturalization Services Triple Fence Project Along the International Border, San Diego County, California: Project manager/director for the survey, testing, and mitigation of sites along border—supervision of multiple field crews, NRHP eligibility assessments, Native American consultation, contribution to Environmental Assessment document, lithic and marine shell analysis, authoring of cultural resources project report. August 1997-January 2000.

Phase I, II, and III Investigations for the Scripps Poway Parkway East Project, Poway California: Project archaeologist/project director—included recordation and assessment of multicomponent prehistoric and historic sites; direction of Phase II and III investigations; direction of laboratory analyses including prehistoric and historic collections; curation of collections; data synthesis; coauthorship of final cultural resources report. February 1994; March-September 1994; September-December 1995.

Archaeological Evaluation of Cultural Resources Within the Proposed Corridor for the San Elijo Water Reclamation System Project, San Elijo, California: Project manager/director —test excavations; direction of artifact identification and analysis; graphics production; coauthorship of final cultural resources report. December 1994-July 1995.

Evaluation of Cultural Resources for the Environmental Impact Report for the Rose Canyon Trunk Sewer Project, San Diego, California: Project manager/Director —direction of test excavations; identification and analysis of prehistoric and historic artifact collections; data synthesis; co-authorship of final cultural resources report, San Diego, California. June 1991-March 1992.

Reports/Papers

Author, coauthor, or contributor to over 2,500 cultural resources management publications, a selection of which are presented below.

- 2015 An Archaeological/Historical Study for the Safari Highlands Ranch Project, City of Escondido, County of San Diego.
- 2015 A Phase I and II Cultural Resources Assessment for the Decker Parcels II Project, Planning Case No. 36962, Riverside County, California.
- 2015 A Phase I and II Cultural Resources Assessment for the Decker Parcels I Project, Planning Case No. 36950, Riverside County, California.
- 2015 Cultural Resource Data Recovery and Mitigation Monitoring Program for Site SDI-10,237 Locus F, Everly Subdivision Project, El Cajon, California.
- 2015 Phase I Cultural Resource Survey for the Woodward Street Senior Housing Project, City of San Marcos, California (APN 218-120-31).
- 2015 An Updated Cultural Resource Survey for the Box Springs Project (TR 33410), APNs 255-230-010, 255-240-005, 255-240-006, and Portions of 257-180-004, 257-180-005, and 257-180-006.
- 2015 A Phase I and II Cultural Resource Report for the Lake Ranch Project, TR 36730, Riverside County, California.
- 2015 A Phase II Cultural Resource Assessment for the Munro Valley Solar Project, Inyo County, California.
- 2014 Cultural Resources Monitoring Report for the Diamond Valley Solar Project, Community of Winchester, County of Riverside.
- 2014 National Historic Preservation Act Section 106 Compliance for the Proposed Saddleback Estates Project, Riverside County, California.
- 2014 A Phase II Cultural Resource Evaluation Report for RIV-8137 at the Toscana Project, TR 36593, Riverside County, California.
- 2014 Cultural Resources Study for the Estates at Del Mar Project, City of Del Mar, San Diego, California (TTM 14-001).
- 2014 Cultural Resources Study for the Aliso Canyon Major Subdivision Project, Rancho Santa Fe, San Diego County, California.
- 2014 Cultural Resources Due Diligence Assessment of the Ocean Colony Project, City of Encinitas.
- 2014 A Phase I and Phase II Cultural Resource Assessment for the Citrus Heights II Project, TTM 36475, Riverside County, California.
- 2013 A Phase I Cultural Resource Assessment for the Modular Logistics Center, Moreno Valley, Riverside County, California.

- 2013 A Phase I Cultural Resources Survey of the Ivey Ranch Project, Thousand Palms, Riverside County, California.
- 2013 Cultural Resources Report for the Emerald Acres Project, Riverside County, California.
- 2013 A Cultural Resources Records Search and Review for the Pala Del Norte Conservation Bank Project, San Diego County, California.
- 2013 An Updated Phase I Cultural Resources Assessment for Tentative Tract Maps 36484 and 36485, Audie Murphy Ranch, City of Menifee, County of Riverside.
- 2013 El Centro Town Center Industrial Development Project (EDA Grant No. 07-01-06386); Result of Cultural Resource Monitoring.
- 2013 Cultural Resources Survey Report for the Renda Residence Project, 9521 La Jolla Farms Road, La Jolla, California.
- 2013 A Phase I Cultural Resource Study for the Ballpark Village Project, San Diego, California.
- 2013 Archaeological Monitoring and Mitigation Program, San Clemente Senior Housing Project, 2350 South El Camino Real, City of San Clemente, Orange County, California (CUP No. 06-065; APN-060-032-04).
- 2012 Mitigation Monitoring Report for the Los Peñasquitos Recycled Water Pipeline.
- 2012 Cultural Resources Report for Menifee Heights (Tract 32277).
- 2012 A Phase I Cultural Resource Study for the Altman Residence at 9696 La Jolla Farms Road, La Jolla, California 92037.
- 2012 Mission Ranch Project (TM 5290-1/MUP P87-036W3): Results of Cultural Resources Monitoring During Mass Grading.
- 2012 A Phase I Cultural Resource Study for the Payan Property Project, San Diego, California.
- 2012 Phase I Archaeological Survey of the Rieger Residence, 13707 Durango Drive, Del Mar, California 92014, APN 300-369-49.
- 2011 Mission Ranch Project (TM 5290-1/MUP P87-036W3): Results of Cultural Resources Monitoring During Mass Grading.
- 2011 Mitigation Monitoring Report for the 1887 Viking Way Project, La Jolla, California.
- 2011 Cultural Resource Monitoring Report for the Sewer Group 714 Project.
- 2011 Results of Archaeological Monitoring at the 10th Avenue Parking Lot Project, City of San Diego, California (APNs 534-194-02 and 03).
- 2011 Archaeological Survey of the Pelberg Residence for a Bulletin 560 Permit Application; 8335 Camino Del Oro; La Jolla, California 92037 APN 346-162-01-00 .
- 2011 A Cultural Resources Survey Update and Evaluation for the Robertson Ranch West Project and an Evaluation of National Register Eligibility of Archaeological sites for Sites for Section 106 Review (NHPA).
- 2011 Mitigation Monitoring Report for the 43rd and Logan Project.

- 2011 Mitigation Monitoring Report for the Sewer Group 682 M Project, City of San Diego Project #174116.
- 2011 A Phase I Cultural Resource Study for the Nooren Residence Project, 8001 Calle de la Plata, La Jolla, California, Project No. 226965.
- 2011 A Phase I Cultural Resource Study for the Keating Residence Project, 9633 La Jolla Farms Road, La Jolla, California 92037.
- 2010 Mitigation Monitoring Report for the 15th & Island Project, City of San Diego; APNs 535-365-01, 535-365-02 and 535-392-05 through 535-392-07.
- 2010 Archaeological Resource Report Form: Mitigation Monitoring of the Sewer and Water Group 772 Project, San Diego, California, W.O. Nos. 187861 and 178351.
- 2010 Pottery Canyon Site Archaeological Evaluation Project, City of San Diego, California, Contract No. H105126.
- 2010 Archaeological Resource Report Form: Mitigation Monitoring of the Racetrack View Drive Project, San Diego, California; Project No. 163216.
- 2010 A Historical Evaluation of Structures on the Butterfield Trails Property.
- 2010 Historic Archaeological Significance Evaluation of 1761 Haydn Drive, Encinitas, California (APN 260-276-07-00).
- 2010 Results of Archaeological Monitoring of the Heller/Nguyen Project, TPM 06-01, Poway, California.
- 2010 Cultural Resource Survey and Evaluation Program for the Sunday Drive Parcel Project, San Diego County, California, APN 189-281-14.
- 2010 Archaeological Resource Report Form: Mitigation Monitoring of the Emergency Garnet Avenue Storm Drain Replacement Project, San Diego, California, Project No. B10062
- 2010 An Archaeological Study for the 1912 Spindrift Drive Project
- 2009 Cultural Resource Assessment of the North Ocean Beach Gateway Project City of San Diego #64A-003A; Project #154116.
- 2009 Archaeological Constraints Study of the Morgan Valley Wind Assessment Project, Lake County, California.
- 2008 Results of an Archaeological Review of the Helen Park Lane 3.1-acre Property (APN 314-561-31), Poway, California.
- 2008 Archaeological Letter Report for a Phase I Archaeological Assessment of the Valley Park Condominium Project, Ramona, California; APN 282-262-75-00.
- 2007 Archaeology at the Ballpark. Brian F. Smith and Associates, San Diego, California. Submitted to the Centre City Development Corporation.
- 2007 Result of an Archaeological Survey for the Villages at Promenade Project (APNs 115-180-007-3, 115-180-049-1, 115-180-042-4, 115-180-047-9) in the City of Corona, Riverside County.
- 2007 Monitoring Results for the Capping of Site CA-SDI-6038/SDM-W-5517 within the Katzer Jamul Center Project; P00-017.
- 2006 Archaeological Assessment for The Johnson Project (APN 322-011-10), Poway, California.

- 2005 Results of Archaeological Monitoring at the El Camino Del Teatro Accelerated Sewer Replacement Project (Bid No. K041364; WO # 177741; CIP # 46-610.6.
- 2005 Results of Archaeological Monitoring at the Baltazar Draper Avenue Project (Project No. 15857; APN: 351-040-09).
- 2004 TM 5325 ER #03-14-043 Cultural Resources.
- 2004 An Archaeological Survey and an Evaluation of Cultural Resources at the Salt Creek Project. Report on file at Brian F. Smith and Associates.
- 2003 An Archaeological Assessment for the Hidden Meadows Project, San Diego County, TM 5174, Log No. 99-08-033. Report on file at Brian F. Smith and Associates.
- 2003 An Archaeological Survey for the Manchester Estates Project, Coastal Development Permit #02-009, Encinitas, California. Report on file at Brian F. Smith and Associates.
- 2003 Archaeological Investigations at the Manchester Estates Project, Coastal Development Permit #02-009, Encinitas, California. Report on file at Brian F. Smith and Associates.
- 2003 Archaeological Monitoring of Geological Testing Cores at the Pacific Beach Christian Church Project. Report on file at Brian F. Smith and Associates.
- 2003 San Juan Creek Drilling Archaeological Monitoring. Report on file at Brian F. Smith and Associates.
- 2003 Evaluation of Archaeological Resources Within the Spring Canyon Biological Mitigation Area, Otay Mesa, San Diego County, California. Brian F. Smith and Associates, San Diego, California.
- 2002 An Archaeological/Historical Study for the Otay Ranch Village 13 Project (et al.). Brian F. Smith and Associates, San Diego, California.
- 2002 An Archaeological/Historical Study for the Audie Murphy Ranch Project (et al.). Brian F. Smith and Associates, San Diego, California.
- 2002 Results of an Archaeological Survey for the Remote Video Surveillance Project, El Centro Sector, Imperial County, California. Brian F. Smith and Associates, San Diego, California.
- 2002 A Cultural Resources Survey and Evaluation for the Proposed Robertson Ranch Project, City of Carlsbad. Brian F. Smith and Associates, San Diego, California.
- 2002 Archaeological Mitigation of Impacts to Prehistoric Site SDI-7976 for the Eastlake III Woods Project, Chula Vista, California. Brian F. Smith and Associates, San Diego, California.
- 2002 An Archaeological/Historical Study for Tract No. 29777, Menifee West GPA Project, Perris Valley, Riverside County. Brian F. Smith and Associates, San Diego, California.
- 2002 An Archaeological/Historical Study for Tract No. 29835, Menifee West GPA Project, Perris Valley, Riverside County. Brian F. Smith and Associates, San Diego, California.
- 2001 An Archaeological Survey and Evaluation of a Cultural Resource for the Moore Property, Poway. Brian F. Smith and Associates, San Diego, California.
- 2001 An Archaeological Report for the Mitigation, Monitoring, and Reporting Program at the Water and Sewer Group Job 530A, Old Town San Diego. Brian F. Smith and Associates, San Diego, California.

- 2001 A Cultural Resources Impact Survey for the High Desert Water District Recharge Site 6 Project, Yucca Valley. Brian F. Smith and Associates, San Diego, California.
- 2001 Archaeological Mitigation of Impacts to Prehistoric Site SDI-13,864 at the Otay Ranch SPA-One West Project. Brian F. Smith and Associates, San Diego, California.
- 2001 A Cultural Resources Survey and Site Evaluations at the Stewart Subdivision Project, Moreno Valley, County of San Diego. Brian F. Smith and Associates, San Diego, California.
- 2000 An Archaeological/Historical Study for the French Valley Specific Plan/EIR, French Valley, County of Riverside. Brian F. Smith and Associates, San Diego, California.
- 2000 Results of an Archaeological Survey and the Evaluation of Cultural Resources at The TPM#24003–Lawson Valley Project. Brian F. Smith and Associates, San Diego, California.
- 2000 Archaeological Mitigation of Impacts to Prehistoric Site SDI-5326 at the Westview High School Project for the Poway Unified School District. Brian F. Smith and Associates, San Diego, California.
- 2000 An Archaeological/Historical Study for the Meniffee Ranch Project. Brian F. Smith and Associates, San Diego, California.
- 2000 An Archaeological Survey and Evaluation of Cultural Resources for the Bernardo Mountain Project, Escondido, California. Brian F. Smith and Associates, San Diego, California.
- 2000 A Cultural Resources Impact Survey for the Nextel Black Mountain Road Project, San Diego, California. Brian F. Smith and Associates, San Diego, California.
- 2000 A Cultural Resources Impact Survey for the Rancho Vista Project, 740 Hilltop Drive, Chula Vista, California. Brian F. Smith and Associates, San Diego, California.
- 2000 A Cultural Resources Impact Survey for the Poway Creek Project, Poway, California. Brian F. Smith and Associates, San Diego, California.
- 2000 Cultural Resource Survey and Geotechnical Monitoring for the Mohyi Residence Project. Brian F. Smith and Associates, San Diego, California.
- 2000 Enhanced Cultural Resource Survey and Evaluation for the Prewitt/Schmucker/ Cavadias Project. Brian F. Smith and Associates, San Diego, California.
- 2000 Enhanced Cultural Resource Survey and Evaluation for the Lamont 5 Project. Brian F. Smith and Associates, San Diego, California.
- 2000 Salvage Excavations at Site SDM-W-95 (CA-SDI-211) for the Poinsettia Shores Santalina Development Project, Carlsbad, California. Brian F. Smith and Associates, San Diego, California.
- 2000 Enhanced Cultural Resource Survey and Evaluation for the Reiss Residence Project, La Jolla, California. Brian F. Smith and Associates, San Diego, California.
- 2000 Enhanced Cultural Resource Survey and Evaluation for the Tyrian 3 Project, La Jolla, California. Brian F. Smith and Associates, San Diego, California.
- 2000 A Report for an Archaeological Evaluation of Cultural Resources at the Otay Ranch Village Two SPA, Chula Vista, California. Brian F. Smith and Associates, San Diego, California.
- 2000 An Archaeological Evaluation of Cultural Resources for the Airway Truck Parking Project, Otay Mesa, County of San Diego. Brian F. Smith and Associates, San Diego, California.

- 2000 Results of an Archaeological Survey and Evaluation of a Resource for the Tin Can Hill Segment of the Immigration and Naturalization and Immigration Service Border Road, Fence, and Lighting Project, San Diego County, California. Brian F. Smith and Associates, San Diego, California.
- 1999 An Archaeological Survey of the Home Creek Village Project, 4600 Block of Home Avenue, San Diego, California. Brian F. Smith and Associates, San Diego, California.
- 1999 An Archaeological Survey for the Sgobassi Lot Split, San Diego County, California. Brian F. Smith and Associates, San Diego, California.
- 1999 An Evaluation of Cultural Resources at the Otay Ranch Village 11 Project. Brian F. Smith and Associates, San Diego, California.
- 1999 An Archaeological/Historical Survey and Evaluation of a Cultural Resource for The Osterkamp Development Project, Valley Center, California. Brian F. Smith and Associates, San Diego, California.
- 1999 An Archaeological Survey and Evaluation of Cultural Resources for the Palomar Christian Conference Center Project, Palomar Mountain, California. Brian F. Smith and Associates, San Diego, California.
- 1999 An Archaeological Survey and Evaluation of a Cultural Resource for the Proposed College Boulevard Alignment Project. Brian F. Smith and Associates, San Diego, California.
- 1999 Results of an Archaeological Evaluation for the Anthony's Pizza Acquisition Project in Ocean Beach, City of San Diego (with L. Pierson and B. Smith). Brian F. Smith and Associates, San Diego, California.
- 1996 An Archaeological Testing Program for the Scripps Poway Parkway East Project. Brian F. Smith and Associates, San Diego, California.
- 1995 Results of a Cultural Resources Study for the 4S Ranch. Brian F. Smith and Associates, San Diego, California.
- 1995 Results of an Archaeological Evaluation of Cultural Resources Within the Proposed Corridor for the San Elijo Water Reclamation System. Brian F. Smith and Associates, San Diego, California.
- 1994 Results of the Cultural Resources Mitigation Programs at Sites SDI-11,044/H and SDI-12,038 at the Salt Creek Ranch Project. Brian F. Smith and Associates, San Diego, California.
- 1993 Results of an Archaeological Survey and Evaluation of Cultural Resources at the Stallion Oaks Ranch Project. Brian F. Smith and Associates, San Diego, California.
- 1992 Results of an Archaeological Survey and the Evaluation of Cultural Resources at the Ely Lot Split Project. Brian F. Smith and Associates, San Diego, California.
- 1991 The Results of an Archaeological Study for the Walton Development Group Project. Brian F. Smith and Associates, San Diego, California.

Andrew J. Garrison, M.A., RPA

Senior Project Archaeologist

Brian F. Smith and Associates, Inc.

14010 Poway Road • Suite A •

Phone: (858) 679-8218 • Fax: (858) 679-9896 • E-Mail: agarrison@bfsa-ca.com



Education

Master of Arts, Public History, University of California, Riverside	2009
Bachelor of Science, Anthropology, University of California, Riverside	2005
Bachelor of Arts, History, University of California, Riverside	2005

Professional Memberships

Register of Professional Archaeologists
Society for California Archaeology
Society for American Archaeology
California Council for the Promotion of History

Society of Primitive Technology
Lithic Studies Society
California Preservation Foundation
Pacific Coast Archaeological Society

Experience

Senior Project Archaeologist Brian F. Smith and Associates, Inc.

**June 2017–Present
Poway, California**

Project management of all phases of archaeological investigations for local, state, and federal agencies including National Register of Historic Places (NRHP) and California Environmental Quality Act (CEQA) level projects interacting with clients, sub-consultants, and lead agencies. Supervise and perform fieldwork including archaeological survey, monitoring, site testing, comprehensive site records checks, and historic building assessments. Perform and oversee technological analysis of prehistoric lithic assemblages. Author or co-author cultural resource management reports submitted to private clients and lead agencies.

Senior Archaeologist and GIS Specialist Scientific Resource Surveys, Inc.

**2009–2017
Orange, California**

Served as Project Archaeologist or Principal Investigator on multiple projects, including archaeological monitoring, cultural resource surveys, test excavations, and historic building assessments. Directed projects from start to finish, including budget and personnel hours proposals, field and laboratory direction, report writing, technical editing, Native American consultation, and final report submittal. Oversaw all GIS projects including data collection, spatial analysis, and map creation.

Preservation Researcher City of Riverside Modernism Survey

**2009
Riverside, California**

Completed DPR Primary, District, and Building, Structure and Object Forms for five sites for a grant-funded project to survey designated modern architectural resources within the City of Riverside.

Information Officer
Eastern Information Center (EIC), University of California, Riverside

2005, 2008–2009
Riverside, California

Processed and catalogued restricted and unrestricted archaeological and historical site record forms. Conducted research projects and records searches for government agencies and private cultural resource firms.

Reports/Papers

- 2017 A Phase I Cultural Resources Assessment for the Marbella Villa Project, City of Desert Hot Springs, Riverside County, California. Brian F. Smith and Associates, Inc.
- 2017 Phase I Cultural Resources Survey for TTM 37109, City of Jurupa Valley, County of Riverside. Brian F. Smith and Associates, Inc.
- 2017 A Phase I Cultural Resources Survey for the Jefferson & Ivy Project, City of Murrieta, California. Brian F. Smith and Associates, Inc.
- 2017 A Phase I Cultural Resources Assessment for the Nuevo Dollar General Store Project, Riverside County, California. Brian F. Smith and Associates, Inc.
- 2017 A Phase I Cultural Resource Study for the Westmont Project, Encinitas, California. Brian F. Smith and Associates, Inc.
- 2017 A Phase I Cultural Resources Assessment for the Winchester Dollar General Store Project, Riverside County, California. Brian F. Smith and Associates, Inc.
- 2017 Phase I Cultural Resource Assessment for TTM 31810 (42.42 acres) Predico Properties Olive Grove Project. Scientific Resource Surveys, Inc.
- 2016 John Wayne Airport Jet Fuel Pipeline and Tank Farm Archaeological Monitoring Plan. Scientific Resource Surveys, Inc. On file at the County of Orange, California.
- 2016 Phase I Cultural Resources Assessment: All Star Super Storage City of Menifee Project, 2015-156. Scientific Resource Surveys, Inc. On file at the Eastern Information Center, University of California, Riverside.
- 2016 Historic Resource Assessment for 220 South Batavia Street, Orange, CA 92868 Assessor's Parcel Number 041-064-4. Scientific Resource Surveys, Inc. Submitted to the City of Orange as part of Mills Act application.
- 2015 Historic Resource Report: 807-813 Harvard Boulevard, Los Angeles. Scientific Resource Surveys, Inc. On file at the South Central Coastal Information Center, California State University, Fullerton.
- 2015 Exploring a Traditional Rock Cairn: Test Excavation at CA-SDI-13/RBLI-26: The Rincon Indian Reservation, San Diego County, California. Scientific Resource Surveys, Inc.
- 2015 Class III Scientific Resource Surveys, Inc. Survey for The Lynx Cat Granite Quarry and Water Valley Road Widening Project County of San Bernardino, California, Near the Community of Hinkley. Scientific Resource Surveys, Inc. On file at the South Central Coastal Information Center, California State University, Fullerton.

- 2014 Archaeological Phase I: Cultural Resource Survey of the South West Quadrant of Fairview Park, Costa Mesa. Scientific Resource Surveys, Inc. On file at the South Central Coastal Information Center, California State University, Fullerton.
- 2014 Archaeological Monitoring Results: The New Los Angeles Federal Courthouse. Scientific Resource Surveys, Inc. On file at the South Central Coastal Information Center, California State University, Fullerton.
- 2012 Bolsa Chica Archaeological Project Volume 7, Technological Analysis of Stone Tools, Lithic Technology at Bolsa Chica: Reduction Maintenance and Experimentation. Scientific Resource Surveys, Inc.
- 2010 Phase II Cultural Resources Report Site CA=RIV-2160 PM No. 35164. Scientific Resource Surveys, Inc. On file at the Eastern Information Center, University of California, Riverside.
- 2009 Riverside Modernism Context Survey, contributing author. Available online at the City of Riverside.

Presentations

- 2017 "Repair and Replace: Lithic Production Behavior as Indicated by the Debitage Assemblage from CA-MRP-283 the Hackney Site." Presented at the Society for California Archaeology Annual Meeting, Fish Camp, California.
- 2016 "Bones, Stones, and Shell at Bolsa Chica: A Ceremonial Relationship?" Presented at the Society for California Archaeology Annual Meeting, Ontario, California.
- 2016 "Markers of Time: Exploring Transitions in the Bolsa Chica Assemblage." Presented at the Society for California Archaeology Annual Meeting, Ontario, California.
- 2016 "Dating Duress: Understanding Prehistoric Climate Change at Bolsa Chica." Presented at the Society for California Archaeology Annual Meeting, Ontario, California.
- 2015 "Successive Cultural Phasing Of Prehistoric Northern Orange County, California." Presented at the Society for California Archaeology Annual Meeting, Redding, California.
- 2015 "Southern California Cogged Stone Replication: Experimentation and Results." Presented at the Society for California Archaeology Annual Meeting, Redding, California.
- 2015 "Prehistoric House Keeping: Lithic Analysis of an Intermediate Horizon House Pit." Presented at the Society for California Archaeology Annual Meeting, Redding, California.
- 2015 "Pits and Privies: The Use and Disposal of Artifacts from Historic Los Angeles." Presented at the Society for California Archaeology Annual Meeting, Redding, California.
- 2015 "Grooving in the Past: A Demonstration of the Manufacturing of OGR beads and a look at Past SRS, Inc. Replicative Studies." Demonstration of experimental manufacturing techniques at the January meeting of The Pacific Coast Archaeological Society, Irvine, California.

- 2014 "From Artifact to Replication: Examining *Olivella* Grooved Bead Manufacturing." Presented at the Society for California Archaeology Annual Meeting, Visalia, California.
- 2014 "New Discoveries from an Old Collection: Comparing Recently Identified OGR Beads to Those Previously Analyzed from the Encino Village Site." Presented at the Society for California Archaeology Annual Meeting, Visalia, California.
- 2012 Bolsa Chica Archaeology: Part Seven: Culture and Chronology. Lithic demonstration of experimental manufacturing techniques at the April meeting of The Pacific Coast Archaeological Society, Irvine, California.
- 2012 "Expedient Flaked Tools from Bolsa Chica: Exploring the Lithic Technological Organization." Presented at the Society for California Archaeology Annual Meeting, San Diego, California.
- 2012 "Utilitarian and Ceremonial Ground Stone Production at Bolsa Chica Identified Through Production Tools." Presented at the Society for California Archaeology Annual Meeting, San Diego, California.
- 2012 "Connecting Production Industries at Bolsa Chica: Lithic Reduction and Bead Manufacturing." Presented at the Society for California Archaeology Annual Meeting, San Diego, California.
- 2011 Bolsa Chica Archaeology: Part Four: Mesa Production Industries. Co-presenter at the April meeting of The Pacific Coast Archaeological Society, Irvine, California.
- 2011 "Hammerstones from Bolsa Chica and Their Relationship towards Site Interpretation." Presented at the Society for California Archaeology Annual Meeting, Rohnert Park, California.
- 2011 "Exploring Bipolar Reduction at Bolsa Chica: Debitage Analysis and Replication." Presented at the Society for California Archaeology Annual Meeting, Rohnert Park, California.

IX. ATTACHMENT B

**Project Maps:
General Location Map
USGS Project Location Map
Project Development Map**

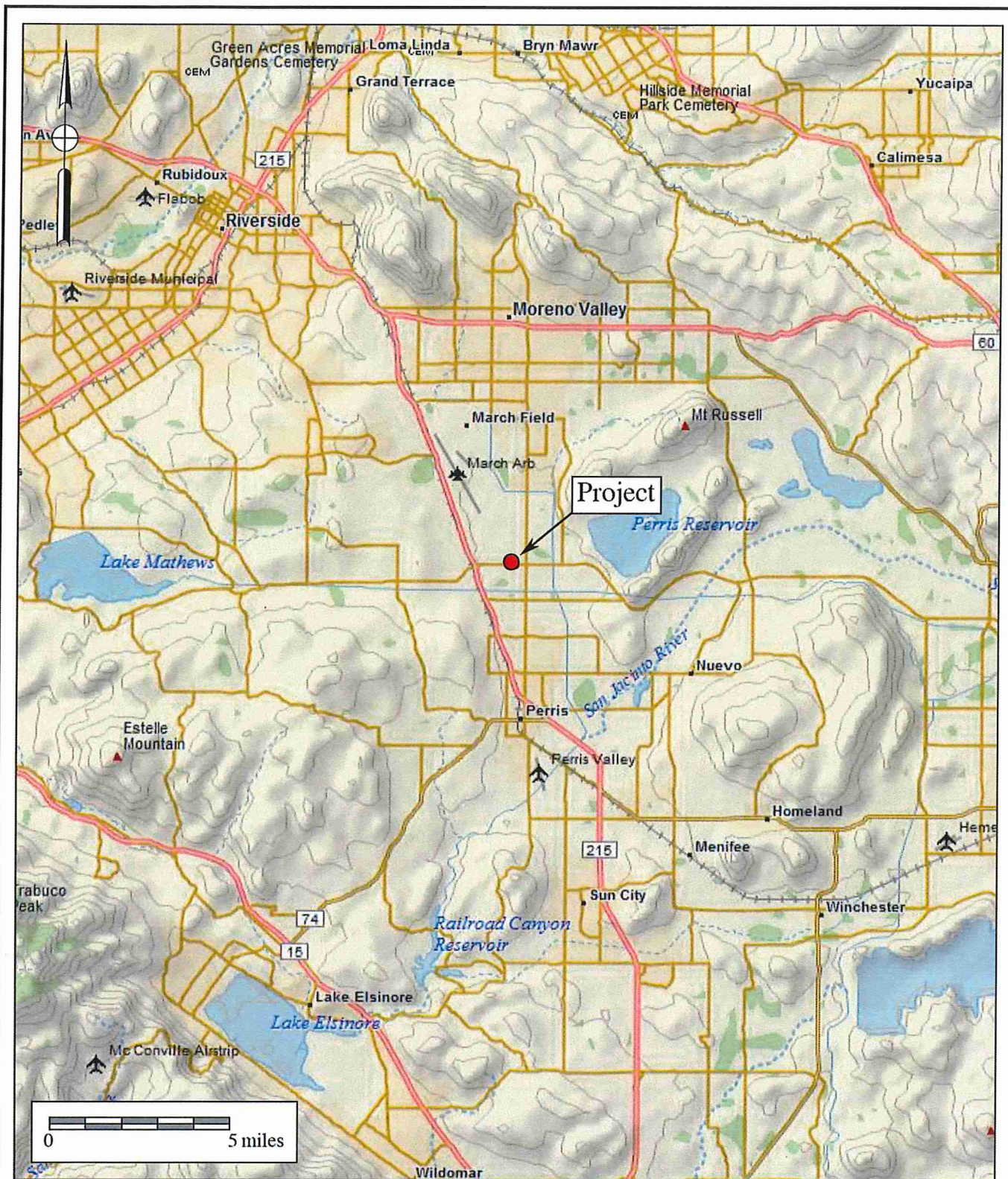


Figure 1
General Location Map

The IDI Project

DeLorme World Base Map Service (1:250,000 series)



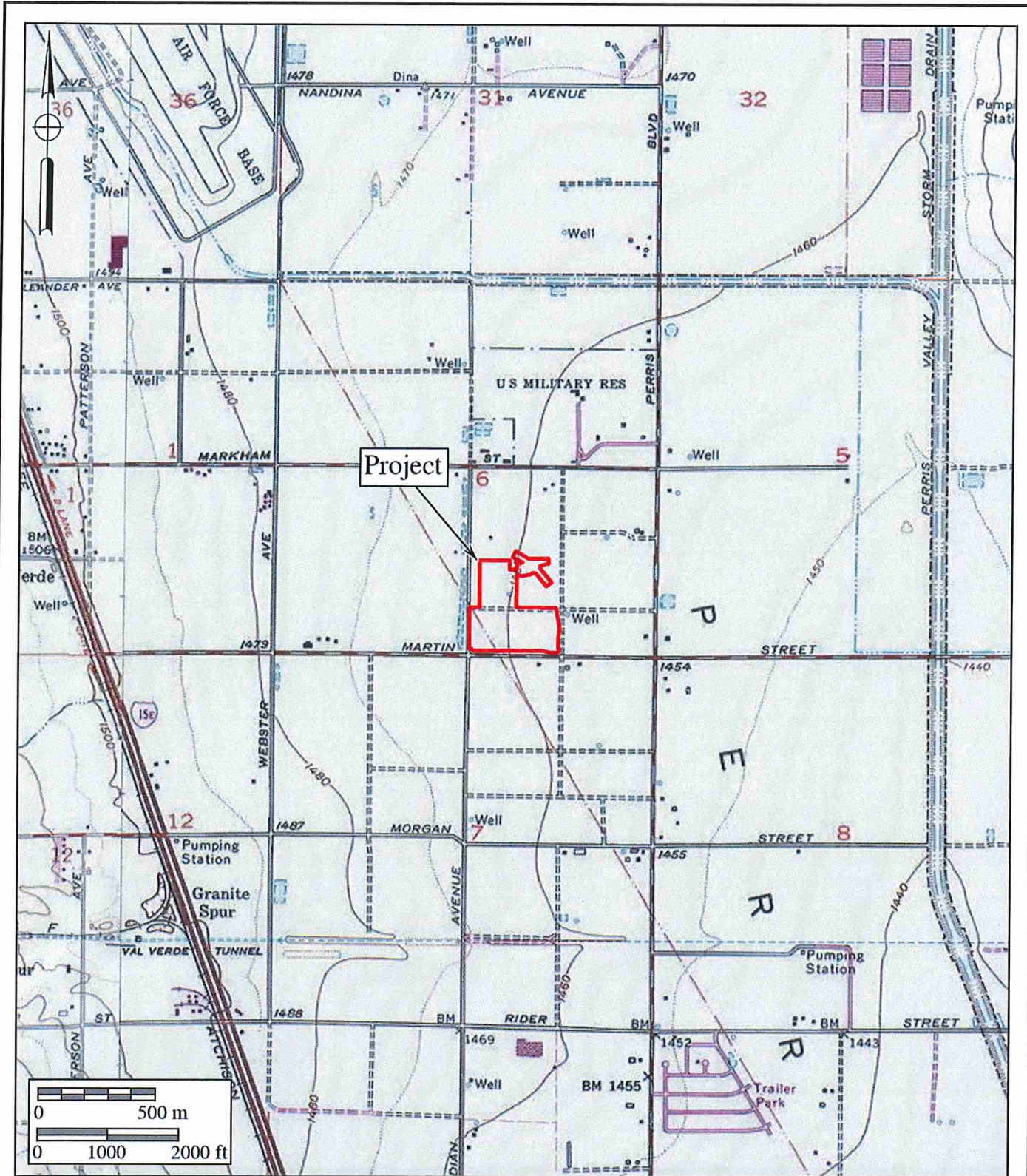


Figure 2
Project Location Map
 The IDI Project

USGS *Steele Peak* and *Perris* Quadrangles (7.5-minute series)



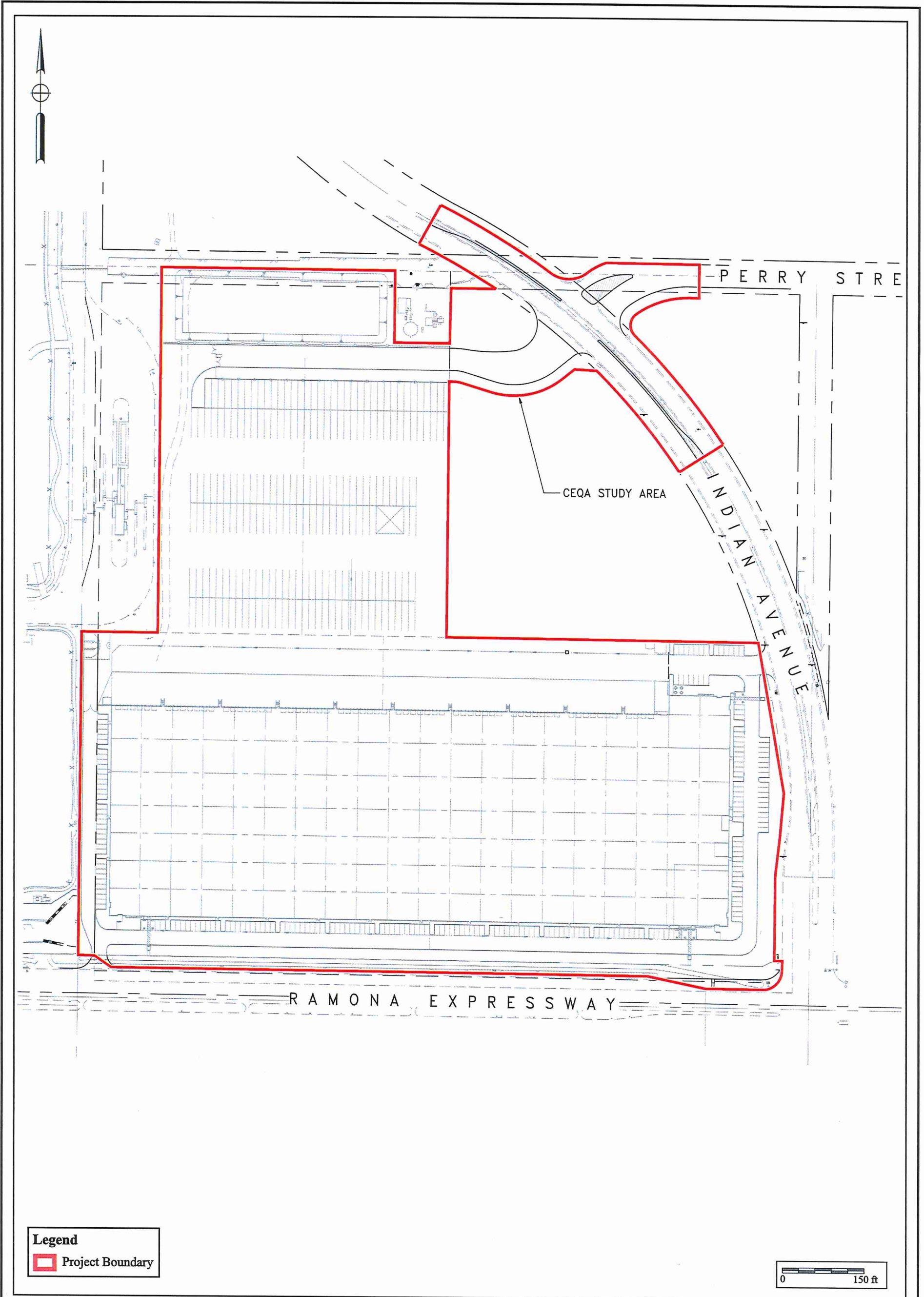


Figure 3
Project Development Map
 The IDI Project



X. CONFIDENTIAL APPENDIX

Site Record Form

Archaeological Records Search Results

NAHC Sacred Lands File Search Results

(Deleted for Public Review; Bound Separately)