

APPENDIX 3.5-1
Cultural and Paleontological Letter Report

June 7, 2019

Patricia Kelly
Department of General Services
Real Estate Services Division
707 3rd Street, 4th Floor
West Sacramento, California 95605

Subject: Cultural and Paleontological Resources Letter Report for the Department of Motor Vehicles Reedley Field Office Replacement Project, City of Reedley, California – Negative Findings

Dear Ms. Kelly:

This letter report documents the cultural and paleontological resources study conducted by Dudek for the proposed Department of Motor Vehicle (DMV) Field Office Replacement Project (proposed project). The Real Estate Services Division of the Department of General Services proposes to develop approximately 3.5 acres of former agricultural land into a DMV field office. The DMV is the lead agency responsible for compliance with the California Environmental Quality Act (CEQA). The cultural resources study included a Southern San Joaquin Valley Information Center (SSJVIC) records search, Native American Heritage Commission (NAHC) Sacred Lands File search, tribal outreach to NAHC-listed tribes, a paleontological search at the Natural History Museum of Los Angeles County (LACM), and an intensive pedestrian survey for cultural and paleontological resources. The cultural and paleontological resources study was conducted by Dudek in accordance with the standards and guidelines defined by the California Office of Historic Preservation and CEQA.

PROJECT LOCATION AND DESCRIPTION

The proposed project area is located in Section 25 of Township 15 South, Range 23 East, of the Reedley, California 7.5-minute U.S. Geological Survey Quadrangle map. The approximately 3.5-acre project site is located at 1895 East Dinuba Avenue in the southeastern portion of the City of Reedley (Figures 1 and 2) approximately 9 miles east of State Route 99. The site is identified as three parcels—Assessor’s Parcel Numbers 370-40-33, 370-40-34, and 370-40-35—and is located approximately 1 mile east of downtown Reedley in an area dominated by agricultural, residential, and industrial land uses. The site is located within a rectangular property bordered by East Cherry Lane to the north, East Dinuba Avenue to the south, South Orange Avenue to the

Mr. or Ms. Patricia Kelly

Subject: Cultural and Paleontological Resources Letter Report for the Department of Motor Vehicles Reedley Field Office Replacement Project, City of Reedley, California – Negative Findings

east, and a commercial property with a gas station and mini-mart to the west, with South Buttonwillow Avenue located west of the commercial property. The existing project site is vacant agricultural land that is relatively flat and undeveloped, with no buildings, structures, or utilities present. This cultural and paleontological resources study evaluates impacts to cultural resources associated with development of the 3.5-acre project site.

REGULATORY FRAMEWORK

State Regulations

The California Register of Historical Resources

In California, the term “historical resource” includes but is not limited to “any object, building, structure, site, area, place, record, or manuscript which is historically or archaeologically significant, or is significant in the architectural, engineering, scientific, economic, agricultural, educational, social, political, military, or cultural annals of California” (California Public Resources Code [PRC] Section 5020.1(j)). In 1992, the California legislature established the California Register of Historical Resources (CRHR) “to be used by state and local agencies, private groups, and citizens to identify the state’s historical resources and to indicate what properties are to be protected, to the extent prudent and feasible, from substantial adverse change” (PRC Section 5024.1(a)). The criteria for listing resources in the CRHR were expressly developed to be in accordance with previously established criteria developed for listing in the National Register of Historic Places (NRHP), enumerated below. According to PRC Section 5024.1(c)(1–4), a resource is considered historically significant if it (i) retains “substantial integrity,” and (ii) meets at least one of the following criteria:

- (1) Is associated with events that have made a significant contribution to the broad patterns of California's history and cultural heritage.
- (2) Is associated with the lives of persons important in our past.
- (3) Embodies the distinctive characteristics of a type, period, region, or method of construction, or represents the work of an important creative individual, or possesses high artistic values.
- (4) Has yielded, or may be likely to yield, information important in prehistory or history.

Mr. or Ms. Patricia Kelly

Subject: Cultural and Paleontological Resources Letter Report for the Department of Motor Vehicles Reedley Field Office Replacement Project, City of Reedley, California – Negative Findings

In order to understand the historic importance of a resource, sufficient time must have passed to obtain a scholarly perspective on the events or individuals associated with the resource. A resource less than 50 years old may be considered for listing in the CRHR if it can be demonstrated that sufficient time has passed to understand its historical importance (see California Code Regulations, Title 14, Section 4852(d)(2)).

The CRHR protects cultural resources by requiring evaluations of the significance of prehistoric and historic resources. The criteria for the CRHR are nearly identical to those for the NRHP, and properties listed or formally designated as eligible for listing in the NRHP are automatically listed in the CRHR, as are the state landmarks and points of interest. The CRHR also includes properties designated under local ordinances or identified through local historical resource surveys.

California Environmental Quality Act

As described further below, the following CEQA statutes and CEQA Guidelines are of relevance to the analysis of archaeological, historic, and tribal cultural resources:

- PRC Section 21083.2(g) defines “unique archaeological resource.”
- PRC Section 21084.1 and CEQA Guidelines Section 15064.5(a) defines “historical resources.” In addition, CEQA Guidelines Section 15064.5(b) defines the phrase “substantial adverse change in the significance of an historical resource;” it also defines the circumstances when a project would materially impair the significance of an historical resource.
- PRC Section 21074(a) defines “tribal cultural resources.”
- PRC Section 5097.98 and CEQA Guidelines Section 15064.5(e): Set forth standards and steps to be employed following the accidental discovery of human remains in any location other than a dedicated ceremony.
- PRC Sections 21083.2(b)-(c) and CEQA Guidelines Section 15126.4: Provide information regarding the mitigation framework for archaeological and historic resources, including examples of preservation-in-place mitigation measures; preservation-in-place is the preferred manner of mitigating impacts to significant archaeological sites because it maintains the relationship between artifacts and the archaeological context, and may also help avoid conflict with religious or cultural values of groups associated with the archaeological site(s).

More specifically, under CEQA, a project may have a significant effect on the environment if it may cause “a substantial adverse change in the significance of an historical resource” (PRC

Mr. or Ms. Patricia Kelly

Subject: Cultural and Paleontological Resources Letter Report for the Department of Motor Vehicles Reedley Field Office Replacement Project, City of Reedley, California – Negative Findings

Section 21084.1; CEQA Guidelines Section 15064.5(b)). If a site is either listed or eligible for listing in the CRHR, or if it is included in a local register of historic resources, or identified as significant in a historical resources survey (meeting the requirements of PRC Section 5024.1(q)), it is a “historical resource” and is presumed to be historically or culturally significant for purposes of CEQA (PRC Section 21084.1; CEQA Guidelines Section 15064.5(a)). The lead agency is not precluded from determining that a resource is a historical resource even if it does not fall within this presumption (PRC Section 21084.1; CEQA Guidelines Section 15064.5(a)).

A “substantial adverse change in the significance of an historical resource” reflecting a significant effect under CEQA means “physical demolition, destruction, relocation, or alteration of the resource or its immediate surroundings such that the significance of an historical resource would be materially impaired” (CEQA Guidelines Section 15064.5(b)(1); PRC Section 5020.1(q)). In turn, the significance of a historical resource is materially impaired when a project:

- (1) Demolishes or materially alters in an adverse manner those physical characteristics of an historical resource that convey its historical significance and that justify its inclusion in, or eligibility for, inclusion in the California Register; or
- (2) Demolishes or materially alters in an adverse manner those physical characteristics that account for its inclusion in a local register of historical resources pursuant to Section 5020.1(k) of the PRC or its identification in an historical resources survey meeting the requirements of Section 5024.1(g) of the PRC, unless the public agency reviewing the effects of the project establishes by a preponderance of evidence that the resource is not historically or culturally significant; or
- (3) Demolishes or materially alters in an adverse manner those physical characteristics of a historical resource that convey its historical significance and that justify its eligibility for inclusion in the California Register as determined by a lead agency for purposes of CEQA (CEQA Guidelines Section 15064.5(b)(2)).

Pursuant to these sections, the CEQA inquiry begins with evaluating whether a project site contains any “historical resources,” then evaluates whether that project will cause a substantial adverse change in the significance of a historical resource such that the resource’s historical significance is materially impaired.

Mr. or Ms. Patricia Kelly

Subject: Cultural and Paleontological Resources Letter Report for the Department of Motor Vehicles Reedley Field Office Replacement Project, City of Reedley, California – Negative Findings

If it can be demonstrated that a project will cause damage to a unique archaeological resource, the lead agency may require reasonable efforts be made to permit any or all of these resources to be preserved in place or left in an undisturbed state. To the extent that they cannot be left undisturbed, mitigation measures are required (PRC Section 21083.2[a], [b], and [c]).

PRC Section 21083.2(g) defines a unique archaeological resource as an archaeological artifact, object, or site about which it can be clearly demonstrated that without merely adding to the current body of knowledge, there is a high probability that it meets any of the following criteria:

- (1) Contains information needed to answer important scientific research questions and that there is a demonstrable public interest in that information.
- (2) Has a special and particular quality such as being the oldest of its type or the best available example of its type.
- (3) Is directly associated with a scientifically recognized important prehistoric or historic event or person.

Impacts to non-unique archaeological resources are generally not considered a significant environmental impact (PRC Section 21083.2(a); CEQA Guidelines Section 15064.5(c)(4)). However, if a non-unique archaeological resource qualifies as tribal cultural resource (PRC Sections 21074(c); 21083.2(h)), further consideration of significant impacts is required.

CEQA Guidelines Section 15064.5 assigns special importance to human remains and specifies procedures to be used when Native American remains are discovered. As described below, these procedures are detailed in PRC Section 5097.98.

Native American Historic Cultural Sites

State law addresses the disposition of Native American burials in archaeological sites and protects such remains from disturbance, vandalism, or inadvertent destruction; establishes procedures to be implemented if Native American skeletal remains are discovered during construction of a project; and establishes the Heritage Commission to resolve disputes regarding the disposition of such remains. In addition, the Native American Historic Resource Protection Act makes it a misdemeanor punishable by up to 1 year in jail to deface or destroy a Native American historic or cultural site that is listed or may be eligible for listing in the CRHR.

Mr. or Ms. Patricia Kelly

Subject: Cultural and Paleontological Resources Letter Report for the Department of Motor Vehicles Reedley Field Office Replacement Project, City of Reedley, California – Negative Findings

California Health and Safety Code Section 7050.5

California law protects Native American burials, skeletal remains, and associated grave goods, regardless of their antiquity, and provides for the sensitive treatment and disposition of those remains. Health and Safety Code Section 7050.5 requires that if human remains are discovered in any place other than a dedicated cemetery, no further disturbance or excavation of the site or nearby area reasonably suspected to contain human remains shall occur until the County coroner has examined the remains (Section 7050.5b). PRC Section 5097.98 also outlines the process to be followed in the event that remains are discovered. If the coroner determines or has reason to believe the remains are those of a Native American, the coroner must contact the NAHC within 24 hours (Section 7050.5c). The NAHC will notify the Most Likely Descendant (MLD). With the permission of the landowner, the MLD may inspect the site of discovery. The inspection must be completed within 48 hours of notification of the MLD by the NAHC. The MLD may recommend means of treating or disposing of, with appropriate dignity, the human remains and items associated with Native Americans.

Paleontological Resources

Paleontological resources are limited, nonrenewable resources of scientific, cultural, and educational value and are afforded protection under state laws and regulations (CEQA). This report satisfies project requirements in accordance with CEQA (PRC Section 21000 et seq.) and PRC Section 5097.5. This analysis also complies with guidelines and significance criteria specified by the Society of Vertebrate Paleontology (SVP 2010).

Paleontological resources are explicitly afforded protection by CEQA, specifically in Section VII(f) of CEQA Guidelines Appendix G, the Environmental Checklist Form, which addresses the potential for adverse impacts to “unique paleontological resource[s] or site[s] or ... unique geological feature[s]” (14 CCR 15000 et seq.). This provision covers fossils of signal importance—remains of species or genera new to science, for example, or fossils exhibiting features not previously recognized for a given animal group—as well as localities that yield fossils significant in their abundance, diversity, preservation, and so forth. Further, CEQA provides that, generally, a resource shall be considered “historically significant” if it has yielded or may be likely to yield information important in prehistory (14 CCR 15064.5 [a][3][D]). Paleontological resources would fall within this category. The California Public Resources Code, Chapter 1.7, Sections 5097.5 and 30244, also regulates removal of paleontological resources from state lands, defines unauthorized removal of fossil resources as a misdemeanor, and requires mitigation of disturbed sites.

Mr. or Ms. Patricia Kelly

Subject: Cultural and Paleontological Resources Letter Report for the Department of Motor Vehicles Reedley Field Office Replacement Project, City of Reedley, California – Negative Findings

BACKGROUND RESEARCH

Cultural Records Search Results

A records search was completed for the current project area and a 1-mile radius by SSJVIC staff at the SSJVIC at California State University Bakersfield on February 12, 2019 (Appendix A). This search included a review of their collection of mapped prehistoric, historical, and built-environment resources, Department of Parks and Recreation Site Records, technical reports, historical maps, and local inventories. Additional consulted sources included the NRHP, California Inventory of Historical Resources/CRHR and listed Office of Historic Preservation Archaeological Determinations of Eligibility, California Points of Historical Interest, and California Historical Landmarks.

Previously Conducted Studies

SSJVIC records indicate that 11 previous cultural resources technical investigations have been conducted within one mile of the proposed project area (Table 1). Of these studies, none have included the project area.

Table 1.
Previous Technical Studies

Report Number	Date	Title	Author
<i>Reports within the Project Area</i>			
No previously recorded reports.			
<i>Reports within the 1-Mile Search Area</i>			
FR-00134	1997	Negative Archaeological Survey Report for a Proposed New Industrial Park	J.S. Kus
FR-00587	1980	Archaeological Survey of the Manning Avenue Right-of-Way at Travers Creek, Fresno County, California	K. Onchi and D.M. Varner
FR-00780	1994	An Archaeological Study of Property On North Avenue In Reedley, Fresno County, California	D.M. Varner
FR-01629	1999	Re-Evaluation for CDBG Project EA 4403-22; CD No. 98907 (Reedley Rail/Trail Community Parkway) Your Reference #T-21	M.T. Acosta-Mena
FR-01756	1984	Reedley Historic Resources Inventory - Final Report	R. Fey
FR-01829	2000	Nextel Communications Wireless Telecommunications Service Facility, Fresno County	L. Billat
FR-01929	2003	A Cultural Resource Study of 19.73 acres - APN 370-240-24 On E. Dinuba Avenue, Fresno County, California	D.G. Wren
FR-02273	2006	Archaeological Survey Report, Manning/Frankwood Avenues Project, City of Reedley, Fresno County, California	S. Baker and L.H. Shoup

Mr. or Ms. Patricia Kelly

Subject: Cultural and Paleontological Resources Letter Report for the Department of Motor Vehicles Reedley Field Office Replacement Project, City of Reedley, California – Negative Findings

Table 1.
Previous Technical Studies

Report Number	Date	Title	Author
FR-02313	2010	An Archaeological Assessment for the Reedley Schools Transportation Center, City of Reedley, Fresno County, California	R.S. Orfila
FR-02487	2010	Geoarchaeological Assessment of the Reedley Sports Park Elevated Water Tank Site, City of Reedley, Fresno County, California	R.H. Brady
FR-02704	2011	A Phase I Cultural Resource Survey for Reedley Family Apartments, City of Reedley, California	S.M. Hudlow

Previously Identified Cultural Resources

SSJVIC records indicate that no archaeological or built-environment resources are within or adjacent to the project area. One archaeological resource, P-10-00390, lies approximately 0.7 miles southwest of the project area (Table 2). No other archaeological resources are within 1 mile of the project area. The city of Reedley contains 1,046 built-environment resources, many of which fall within 1 mile of the project area in the downtown area of Reedley (Appendix A). However, no built-environment resources are located within 0.5 miles of the project area.

Table 2.
Previously Recorded Cultural Resources

Trinomial P-	Period	Type	NRHP/CRHR Status
<i>Resources within the Project Area</i>			
No previously recorded resources			
<i>Resources within the 1-Mile Search Area</i>			
10-003930	Historic	Southern Pacific Railroad	6Y: Ineligible

Archival and Building Development Research

Dudek consulted historic maps and aerial photographs to understand development of the project area and surrounding properties. Historic aerial photographs were available for 1962, 1963, 1969, 1962, 1998, 2005, 2009, 2010, 2012, and 2014 (NETR 2019). All aerial images display only agricultural use of the project. Historic maps from 1924, 1951, 1958, 1967, 1982, 2012, and 2015 were inspected to observe previous development in the project area. These maps indicate

Mr. or Ms. Patricia Kelly

Subject: Cultural and Paleontological Resources Letter Report for the Department of Motor Vehicles Reedley Field Office Replacement Project, City of Reedley, California – Negative Findings

the project area has only been used for agriculture; no structures are displayed on the maps. Aerial images also revealed all adjacent structures to the project area are of recent construction.

Paleontological Records Search

Dudek requested a paleontological records search from the LACM on January 18, 2019, and response was received on February 1, 2019. The records search request included the project area and a 1-mile-radius buffer. The LACM reported no paleontological localities within the project area. The closest locality is LACM 7254 located on the south side of Ash Slough, northeast of Chowchilla. This locality produced a fossil specimen of elephantoid (Proboscidea, e.g. mammoths and mastodons). Southeast of the project area and Visalia, and east of Terra Bella, LACM 4087, produced a fossil specimen of mammoth (*Mammuthus jeffersonii*) (Appendix C).

NAHC and Tribal Correspondence

Dudek requested a NAHC search of their Sacred Lands File on February 15, 2019 for the proposed project area. The NAHC results, received March 11, 2019, indicated the Sacred Lands File search did not identify any cultural resources within the records search area and provided a list of Native American tribes culturally affiliated with the location of the project site. Letters were sent to each of the contacts to request information on resources in the area on March 18, 2019. The Table Mountain Rancheria Tribal Government Office responded on May 30, 2019, declining to participate in consultation at this time but requesting to be informed if cultural resources are discovered during construction. No other tribal contacts have responded. NAHC and Tribal correspondence documents are included in Appendix B. If any responses are received in the future, they will be forwarded to the DMV.

The proposed project is subject to compliance with Assembly Bill 52 (PRC Section 21074), which requires consideration of impacts to “tribal cultural resources” as part of the CEQA process and requires the CEQA lead agency to notify any groups (who have requested notification) of the project who are traditionally or culturally affiliated with the geographic area of the project. Because Assembly Bill 52 is a government-to-government process, all records of correspondence related to Assembly Bill 52 notification and any subsequent consultation are on file with the DMV.

Intensive Pedestrian Survey

Dudek archaeologist/paleontologist Sarah Lewis inspected all portions of the 3.5-acre project area on February 13, 2019, using standard archaeological and paleontological procedures and techniques that meet the Secretary of Interior’s Standards and Guidelines for cultural and

Mr. or Ms. Patricia Kelly

Subject: Cultural and Paleontological Resources Letter Report for the Department of Motor Vehicles Reedley Field Office Replacement Project, City of Reedley, California – Negative Findings

paleontological resources inventory. All portions of the project area are unused agricultural fields. The entire area was subject to an intensive pedestrian survey utilizing parallel transects spaced 15 meters apart. Ms. Lewis examined the ground surface for surface artifacts, undisturbed areas, archaeological deposits, or geological exposures. Subsurface exposures and rodent burrows were opportunistically inspected for indications of soils with the potential to contain deposits. Ground visibility was poor throughout the most of the area (20%) due to thick grass. The entirety of the project area has been subject to substantial disturbances related to agricultural use. No archaeological or paleontological resources were identified within the project area during the field survey.

SUMMARY AND MANAGEMENT RECOMMENDATIONS

Paleontological Resources

The LACM archival search of recorded paleontological localities stated no localities have been recorded within the project area; however, localities nearby have produced fossils specimens of extinct proboscideans, such as mammoth remains (Appendix C). Although no paleontological resources were observed during the pedestrian survey, the area is considered to have the potential to yield significant paleontological resources should Pleistocene age sedimentary deposits be encountered during grading activities. Therefore, the following measure is recommended to reduce impactsto paleontological resources.

Prior to the commencement of any grading activity, the applicant shall retain a qualified paleontologist, subject to the review and approval of the lead agency to ensure the implementation of a paleontological monitoring program. The Society of Vertebrate Paleontology (SVP 2010) defines a qualified paleontologist as having:

- (1) A graduate degree in paleontology or geology, and/or a publication record in peer reviewed journals; and demonstrated competence in field techniques, preparation, identification, curation, and reporting in the state or geologic province in which the project occurs. An advanced degree is less important than demonstrated competence and regional experience.
- (2) At least two full years professional experience as assistant to a Project Paleontologist with administration and project management experience; supported by a list of projects and referral contacts.
- (3) Proficiency in recognizing fossils in the field and determining significance.

Mr. or Ms. Patricia Kelly

Subject: Cultural and Paleontological Resources Letter Report for the Department of Motor Vehicles Reedley Field Office Replacement Project, City of Reedley, California – Negative Findings

- (4) Expertise in local geology, stratigraphy, and biostratigraphy.
- (5) Experience collecting vertebrate fossils in the field.

The qualified paleontologist shall attend any pre-construction meetings and manage the paleontological monitor(s) if he or she is not doing the monitoring. A paleontological monitor should be on site during all excavations below the depth of previously disturbed sediments. The SVP (2010) defines a qualified paleontological monitor as having:

- (1) BS or BA degree in geology or paleontology and one year experience monitoring in the state or geologic province of the specific project. An associate degree and/or demonstrated experience showing ability to recognize fossils in a biostratigraphic context and recover vertebrate fossils in the field may be substituted for a degree. An undergraduate degree in geology or paleontology is preferable, but is less important than documented experience performing paleontological monitoring, or
- (2) AS or AA in geology, paleontology, or biology and demonstrated two years experience collecting and salvaging fossil materials in the state or geologic province of the specific project, or
- (3) Enrollment in upper division classes pursuing a degree in the fields of geology or paleontology and two years of monitoring experience in the state or geologic province of the specific project.
- (4) Monitors must demonstrate proficiency in recognizing various types of fossils, in collection methods, and in other paleontological field techniques.

The paleontological monitor shall monitor construction excavations below a depth of 5 feet in areas underlain by Quaternary alluvium and all excavations in areas underlain by elevated Quaternary alluvium as determined by the Qualified Paleontologist based on the construction plans. The paleontological monitor shall be equipped with necessary tools for the collection of fossils and associated geological and paleontological data. The monitor shall complete daily logs detailing the day's excavation activities and pertinent geological and paleontological data. In the event that paleontological resources (e.g., fossils) are unearthed during grading, the paleontological monitor will temporarily halt and/or divert grading activity to allow recovery of paleontological resources. The area of discovery will be roped off with a 50-foot radius buffer. Once documentation and collection of the find is completed, the monitor will remove the rope and allow grading to recommence in the area of the find.

Mr. or Ms. Patricia Kelly

Subject: Cultural and Paleontological Resources Letter Report for the Department of Motor Vehicles Reedley Field Office Replacement Project, City of Reedley, California – Negative Findings

Following the paleontological monitoring program, a final monitoring report shall be submitted to the Department of General Services program manager, as the Department of Motor Vehicles authorized assignee for project construction, for approval. The report should summarize the monitoring program and include geological observations and any paleontological resources recovered during paleontological monitoring for the project.

Archaeological Resources

Observation of the present conditions within the proposed project indicates that all areas have been subject to a substantial degree of past disturbances related to agricultural activities. No newly identified archaeological resources were recorded during the pedestrian survey of the project area. Further, a SSJVIC records search did not identify the presence of cultural resources within the proposed project area. An NAHC Sacred Lands File search and subsequent tribal outreach also failed to indicate the presence of cultural resources. The project, as currently designed, appears to have a low potential for encountering intact cultural deposits during ground-disturbing activities and would have no impact to known cultural resources. Based on these negative findings and the observed conditions of the present project area, no additional cultural resources efforts, including archaeological monitoring, are recommended to be necessary beyond standard protection measures for unanticipated discoveries of cultural resources and human remains.

Unanticipated Discovery of Archaeological Resources

In the event that archaeological resources (sites, features, or artifacts) are exposed during construction activities for the proposed project, all construction work occurring within 100 feet of the find shall immediately stop until a qualified archaeologist, meeting the Secretary of the Interior's Professional Qualification Standards, can evaluate the significance of the find and determine whether or not additional study is warranted. Depending upon the significance of the find under CEQA (14 CCR 15064.5(f); PRC Section 21082), the archaeologist may simply record the find and allow work to continue. If the discovery proves significant under CEQA, additional work such as preparation of an archaeological treatment plan, testing, or data recovery may be warranted.

Unanticipated Discovery of Human Remains

In accordance with Section 7050.5 of the California Health and Safety Code, if human remains are found, the County Coroner shall be immediately notified of the discovery. No further excavation or disturbance of the site or any nearby area reasonably suspected to overlie adjacent

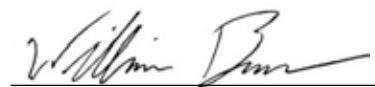
Mr. or Ms. Patricia Kelly

Subject: Cultural and Paleontological Resources Letter Report for the Department of Motor Vehicles Reedley Field Office Replacement Project, City of Reedley, California – Negative Findings

remains shall occur until the County Coroner has determined, within 2 working days of notification of the discovery, the appropriate treatment and disposition of the human remains. If the County Coroner determines that the remains are, or are believed to be, Native American, he or she shall notify the NAHC in Sacramento within 24 hours. In accordance with California Public Resources Code, Section 5097.98, the NAHC must immediately notify those persons it believes to be the MLD from the deceased Native American. The MLD shall complete their inspection within 48 hours of being granted access to the site. The designated Native American representative would then determine, in consultation with the property owner, the disposition of the human remains.

If you have any questions about this report, please contact me at wburns@dudek.com.

Respectfully submitted,



William Burns, MSc, RPA
Archaeologist

*cc: Adam Giacinto, Dudek
Michael Williams, Dudek
Rica Nitka, Dudek*

*Att: NADB Information
Figure 1. Project Location
Figure 2. Project Site
Appendix A: SSJVIC Records Search Results - Confidential
Appendix B: NAHC and Tribal Correspondence
Appendix C: Museum Records Search Results*

REFERENCES CITED

NETR (Nationwide Environmental Title Research). 1946, 1958, 1999, 2005, 2009, 2010, 2012.
Accessed February 15, 2019. www.historicaerials.com.

SVP (Society of Vertebrate Paleontology). 2010. *Standard Procedures for the Assessment and Mitigation of Adverse Impacts to Paleontological Resources*. http://vertpaleo.org/Membership/Member-Ethics/SVP_Impact_Mitigation_Guidelines.aspx.

NATIONAL ARCHAEOLOGICAL DATABASE (NADB) INFORMATION

Authors: William Burns, MSc, RPA, Sarah Siren, MS, Michael Williams, PhD, and Adam Giacinto, MA, RPA

Firm: Dudek

Project Proponent: Department of General Services

Report Date: June 2019

Report Title: Cultural and Paleontological Resources Letter Report for the Department of Motor Vehicles Reedley Field Office Replacement Project, City of Reedley, California – Negative Findings

Type of Study: Archaeological Inventory, Paleontological Inventory, Intensive Pedestrian Survey

Acreage: 3.5 acres

Resources: None

USGS Quads: Section 25, Township 15 South, Range 23 East, Reedley Quadrangle USGS map

Keywords: Reedley, Archaeological Inventory, Paleontological Inventory, Intensive Pedestrian Survey

APPENDIX A
CONFIDENTIAL
SSJVIC Records Search Results
(Under Separate Cover)

APPENDIX B
NAHC and Tribal Correspondence

Sacred Lands File & Native American Contacts List Request

NATIVE AMERICAN HERITAGE COMMISSION

1550 Harbor Blvd, Suite 100
West Sacramento, CA 95501
(916) 373-3710
(916) 373-5471 – Fax
nahc@nahc.ca.gov

Information Below is Required for a Sacred Lands File Search

Project: Reedley DMV Field Office Replacement Project
County: Fresno

USGS Quadrangle

Name: Reedley, CA
Township: 15S Range: 23E Section(s): 25

Company/Firm/Agency:

Dudek

Contact Person: William Burns

Street Address: 1630 San Pablo Avenue

City: Oakland Zip: 94612

Phone: (760) 334-1156 Extension: _____

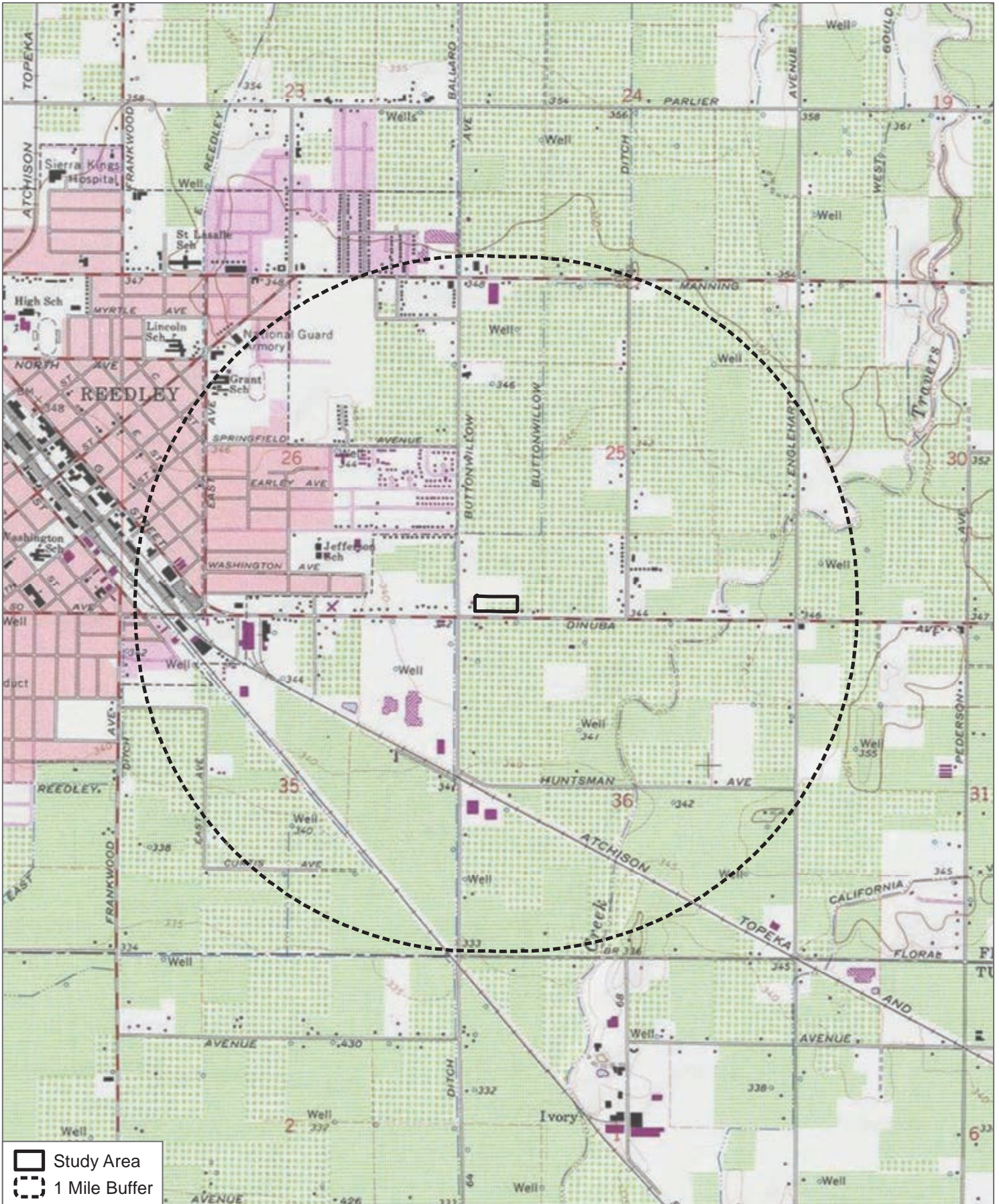
Fax: _____

Email: wburns@dudek.com

Project Description:

The proposed project would consist of construction of a new approximately 13,701-square-foot, single-story DMV field office with an attached carport and associated on-site circulation and landscaping improvements. The exterior of the building would primarily be made of concrete masonry (1-foot by 2-foot masonry veneer and metal wall panel finish) and glass windows. The entry area and outdoor seating area on the east side of the building would include overhangs for shading.

Project Location Map is attached



SOURCE: USGS 7.5-Minute Series Reedley Quadrangle
 Township 15S / Range 23E / Sections 23, 24, 25, 26, 35, 36; Township 15S / Range 24E / Sections 30, 31



NATIVE AMERICAN HERITAGE COMMISSION
Cultural and Environmental Department
1550 Harbor Blvd., Suite 100
West Sacramento, CA 95691
Phone: (916) 373-3710
Email: nahc@nahc.ca.gov
Website: <http://www.nahc.ca.gov>
Twitter: @CA_NAHC



March 11, 2019

William Burns
Dudek

VIA Email to: wburns@dudek.com

RE: Reedley DMV Field Office Replacement Project, Fresno County

Dear Mr. Burns:

A record search of the Native American Heritage Commission (NAHC) Sacred Lands File (SLF) was completed for the information you have submitted for the above referenced project. The results were negative. However, the absence of specific site information in the SLF does not indicate the absence of cultural resources in any project area. Other sources of cultural resources should also be contacted for information regarding known and recorded sites.

Attached is a list of Native American tribes who may also have knowledge of cultural resources in the project area. This list should provide a starting place in locating areas of potential adverse impact within the proposed project area. I suggest you contact all of those indicated; if they cannot supply information, they might recommend others with specific knowledge. By contacting all those listed, your organization will be better able to respond to claims of failure to consult with the appropriate tribe. If a response has not been received within two weeks of notification, the Commission requests that you follow-up with a telephone call or email to ensure that the project information has been received.

If you receive notification of change of addresses and phone numbers from tribes, please notify the NAHC. With your assistance, we can assure that our lists contain current information. If you have any questions or need additional information, please contact me at my email address: Katy.Sanchez@nahc.ca.gov.

Sincerely,

A handwritten signature in cursive script, appearing to read "Katy Sanchez".

for
Katy Sanchez
Associate Environmental Planner

Attachment

**Native American Heritage Commission
Native American Contacts List
3/11/2019**

Dumna Wo-Wah Tribal Government
Robert Ledger Sr., Chairperson
2191 West Pico Ave.
Fresno CA 93705
ledgerrobert@ymail.com
(559) 540-6346

Dumna/Foothill Yokuts
Mono

Traditional Choinumni Tribe
David Alvarez, Chairperson
2415 E. Houston Avenue
Fresno CA 93720
davealvarez@sbcglobal.net
(559) 217-0396 Cell

Choinumni

Kings River Choinumni Farm Tribe
Stan Alec
3515 East Fedora Avenue
Fresno CA 93726
(559) 647-3227 Cell

Foothill Yokuts
Choinumni

Traditional Choinumni Tribe
Rick Osborne, Cultural Resources
2415 E. Houston Avenue
Fresno CA 93720
(559) 324-8764
lemek@att.net

Choinumni

Santa Rosa Rancheria Tachi Yokut Tribe
Rueben Barrios Sr., Chairperson
P.O. Box 8
Lemoore CA 93245
(559) 924-1278
(559) 924-3583 Fax

Tache
Tachi
Yokut

Wuksache Indian Tribe/Eshom Valley Band
Kenneth Woodrow, Chairperson
1179 Rock Haven Ct.
Salinas CA 93906
kwood8934@aol.com
(831) 443-9702

Foothill Yokuts
Mono
Wuksache

Table Mountain Rancheria
Leanne Walker-Grant, Chairperson
P.O. Box 410
Friant CA 93626
rpennell@tmr.org
(559) 822-2587
(559) 822-2693 Fax

Yokuts

Table Mountain Rancheria
Bob Pennell, Cultural Resources Director
P.O. Box 410
Friant CA 93626
rpennell@tmr.org
(559) 325-0351
(559) 325-0394 Fax

Yokuts

This list is current as of the date of this document and is based on the information available to the Commission on the date it was produced.

Distribution of this list does not relieve any person of statutory responsibility as defined in Section 7050.5 of the Health and Safety Code, Section 5097.94 of the Public Resources Code, or Section 5097.98 of the Public Resources Code.

This list is only applicable for contacting local Native American Tribes for the proposed:
Reedley DMV Field Office Replacement Project, Fresno County.

March 15, 2019

PN 11574

Mr. Stan Alec,
Kings River Choinumni Farm Tribe
3515 East Fedroa Avenue
Fresno, CA 93726

***Subject: Department of Motor Vehicle Reedley Field Office Replacement Project,
City of Reedley, California - Native American Outreach***

Dear Mr. Alec:

We have been retained by the Department of General Services, Real Estate Services Division to complete a cultural resources investigation for construction of a proposed DMV field office, in compliance with the California Environmental Quality Act (CEQA) and relevant local municipal guidelines and regulations.

This project area is located in Section 25 of Township 15 South, Range 23 East, of the Reedley, California 7.5' USGS Quadrangle map. The approximately 3.5-acre project site is located at 1895 East Dinuba Avenue in the southeastern portion of the City of Reedley (Figures 1 and 2) approximately 9 miles east of State Route 99. The site is identified as three parcels: Assessor's Parcel Numbers 370-40-33, -34, and -35 and is located approximately 1 mile east of downtown Reedley in an area dominated by agricultural, residential, and industrial land uses. The site is located within a rectangular property bordered by East Cherry Lane to the north, East Dinuba Avenue to the south, South Orange Avenue to the east, and a commercial property with a gas station and mini-mart to the west, with South Buttonwillow Avenue located west of the commercial property. The existing project site is vacant agricultural land that is relatively flat and undeveloped, with no buildings, structures, or utilities present.

We have submitted and reviewed the results of search of the Sacred Lands Inventory on file with the Native American Heritage Commission (NAHC). The NAHC Sacred Lands Inventory search resulted in negative findings. However, the NAHC provided us your contact as someone who may have information regarding known or previously unrecorded cultural resources or sacred sites in the project vicinity.

We are reaching out to local Native American representatives and tribes to facilitate consultation on behalf of the DMV as part of the AB 52 consultation process with a request for any information relating to Native American resources in the vicinity of the proposed project. Any information you

provide will remain confidential and be used for planning purposes for this project only. If you are not comfortable describing the specific resource, we can document it as an “environmentally sensitive area.”

You may respond by mail, e-mail, telephone, or in person. You may also visit our office to review our research files. We expect your response within 14 days of receiving this letter. If you have any questions or comments, you can reach me by telephone at (760) 334-1156, or by e-mail at wburns@dudek.com. Thank you for your assistance with this project.

Sincerely,



William Burns, MSc., RPA

Archaeologist

DUDEK

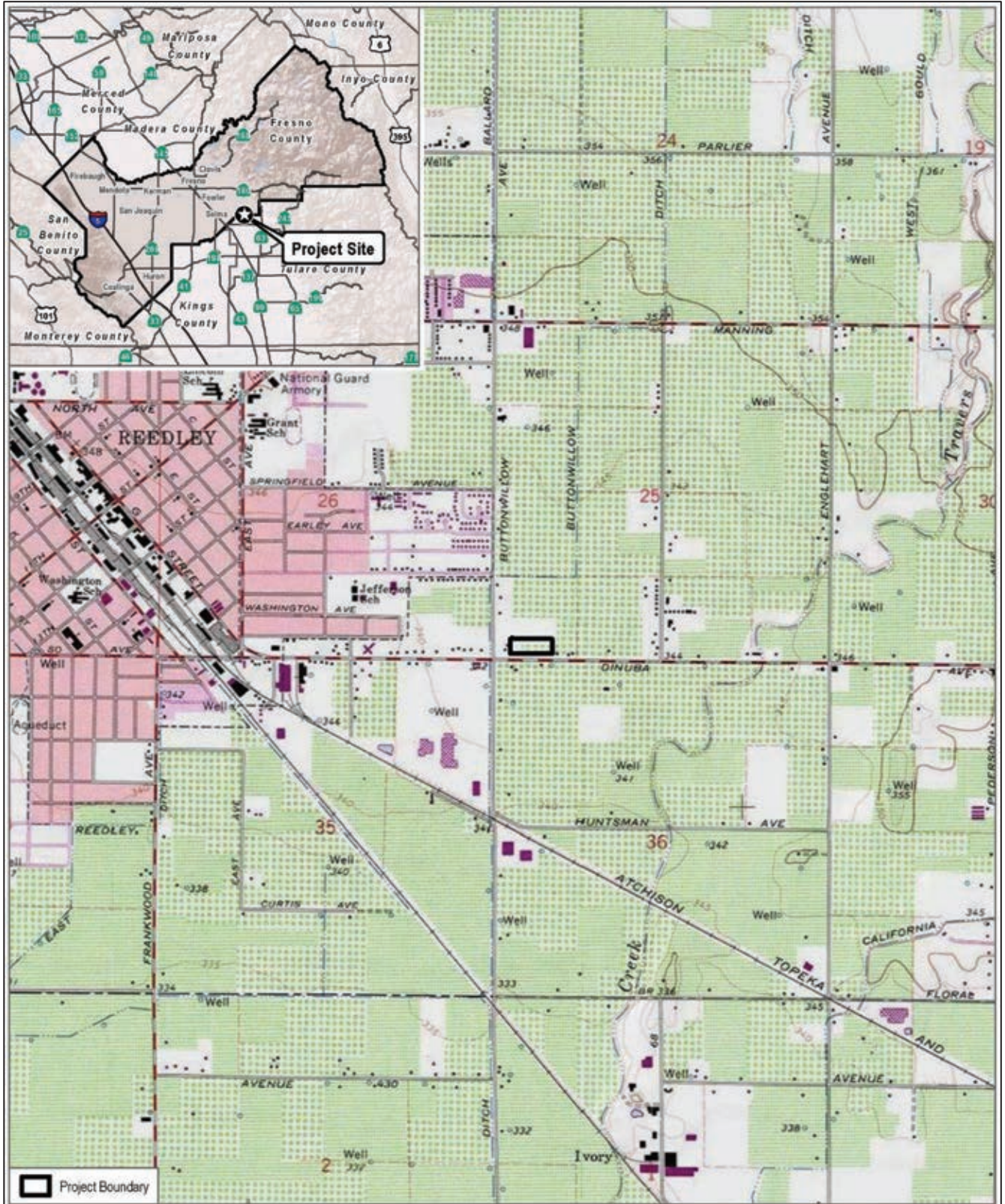
1630 San Pablo Avenue, Suite 300

Oakland, California 94612

T: 760.334.1156

wburns@dudek.com

Attachment: Figures 1 and 2. Project Location Maps



SOURCE: USGS 7.5-Minute Series Reedley Quadrangle



FIGURE 1
Project Location
 Reedley DMV



SOURCE: Fresno County 2018, Bing Maps 2019



FIGURE 2
Aerial Map
 Reedley DMV

March 15, 2019

PN 11574

Mr. David Alvarez, Chairperson
Traditional Choinumni Tribe
2415 E. Houston Avenue
Fresno, CA 93720

***Subject: Department of Motor Vehicle Reedley Field Office Replacement Project,
City of Reedley, California - Native American Outreach***

Dear Mr. Alvarez:

We have been retained by the Department of General Services, Real Estate Services Division to complete a cultural resources investigation for construction of a proposed DMV field office, in compliance with the California Environmental Quality Act (CEQA) and relevant local municipal guidelines and regulations.

This project area is located in Section 25 of Township 15 South, Range 23 East, of the Reedley, California 7.5' USGS Quadrangle map. The approximately 3.5-acre project site is located at 1895 East Dinuba Avenue in the southeastern portion of the City of Reedley (Figures 1 and 2) approximately 9 miles east of State Route 99. The site is identified as three parcels: Assessor's Parcel Numbers 370-40-33, -34, and -35 and is located approximately 1 mile east of downtown Reedley in an area dominated by agricultural, residential, and industrial land uses. The site is located within a rectangular property bordered by East Cherry Lane to the north, East Dinuba Avenue to the south, South Orange Avenue to the east, and a commercial property with a gas station and mini-mart to the west, with South Buttonwillow Avenue located west of the commercial property. The existing project site is vacant agricultural land that is relatively flat and undeveloped, with no buildings, structures, or utilities present.

We have submitted and reviewed the results of search of the Sacred Lands Inventory on file with the Native American Heritage Commission (NAHC). The NAHC Sacred Lands Inventory search resulted in negative findings. However, the NAHC provided us your contact as someone who may have information regarding known or previously unrecorded cultural resources or sacred sites in the project vicinity.

We are reaching out to local Native American representatives and tribes to facilitate consultation on behalf of the DMV as part of the AB 52 consultation process with a request for any information relating to Native American resources in the vicinity of the proposed project. Any information you provide will remain confidential and be used for planning purposes for this project only. If you are

not comfortable describing the specific resource, we can document it as an “environmentally sensitive area.”

You may respond by mail, e-mail, telephone, or in person. You may also visit our office to review our research files. We expect your response within 14 days of receiving this letter. If you have any questions or comments, you can reach me by telephone at (760) 334-1156, or by e-mail at wburns@dudek.com. Thank you for your assistance with this project.

Sincerely,



William Burns, MSc., RPA

Archaeologist

DUDEK

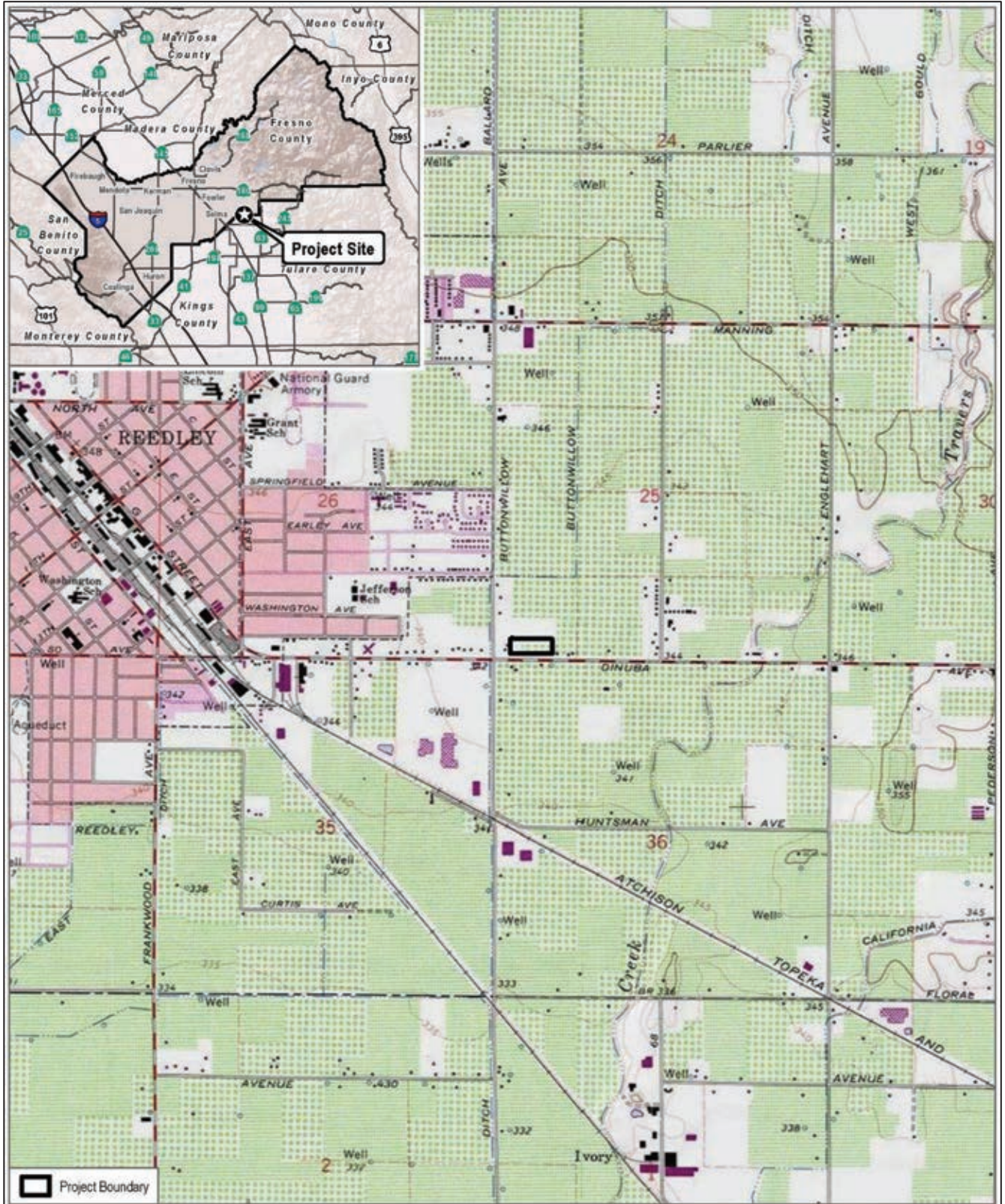
1630 San Pablo Avenue, Suite 300

Oakland, California 94612

T: 760.334.1156

wburns@dudek.com

Attachment: Figures 1 and 2. Project Location Maps



SOURCE: USGS 7.5-Minute Series Reedley Quadrangle



FIGURE 1
Project Location
 Reedley DMV



SOURCE: Fresno County 2018, Bing Maps 2019



FIGURE 2
Aerial Map
 Reedley DMV

March 15, 2019

PN 11574

Mr. Rueben Barrios, Chairperson
Santa Rosa Rancheria Tachi Yokut Tribe
PO Box 8
Lemoore, CA 93245

***Subject: Department of Motor Vehicle Reedley Field Office Replacement Project,
City of Reedley, California - Native American Outreach***

Dear Mr. Barrios:

We have been retained by the Department of General Services, Real Estate Services Division to complete a cultural resources investigation for construction of a proposed DMV field office, in compliance with the California Environmental Quality Act (CEQA) and relevant local municipal guidelines and regulations.

This project area is located in Section 25 of Township 15 South, Range 23 East, of the Reedley, California 7.5' USGS Quadrangle map. The approximately 3.5-acre project site is located at 1895 East Dinuba Avenue in the southeastern portion of the City of Reedley (Figures 1 and 2) approximately 9 miles east of State Route 99. The site is identified as three parcels: Assessor's Parcel Numbers 370-40-33, -34, and -35 and is located approximately 1 mile east of downtown Reedley in an area dominated by agricultural, residential, and industrial land uses. The site is located within a rectangular property bordered by East Cherry Lane to the north, East Dinuba Avenue to the south, South Orange Avenue to the east, and a commercial property with a gas station and mini-mart to the west, with South Buttonwillow Avenue located west of the commercial property. The existing project site is vacant agricultural land that is relatively flat and undeveloped, with no buildings, structures, or utilities present.

We have submitted and reviewed the results of search of the Sacred Lands Inventory on file with the Native American Heritage Commission (NAHC). The NAHC Sacred Lands Inventory search resulted in negative findings. However, the NAHC provided us your contact as someone who may have information regarding known or previously unrecorded cultural resources or sacred sites in the project vicinity.

We are reaching out to local Native American representatives and tribes to facilitate consultation on behalf of the DMV as part of the AB 52 consultation process with a request for any information relating to Native American resources in the vicinity of the proposed project. Any information you provide will remain confidential and be used for planning purposes for this project only. If you are

not comfortable describing the specific resource, we can document it as an “environmentally sensitive area.”

You may respond by mail, e-mail, telephone, or in person. You may also visit our office to review our research files. We expect your response within 14 days of receiving this letter. If you have any questions or comments, you can reach me by telephone at (760) 334-1156, or by e-mail at wburns@dudek.com. Thank you for your assistance with this project.

Sincerely,



William Burns, MSc., RPA

Archaeologist

DUDEK

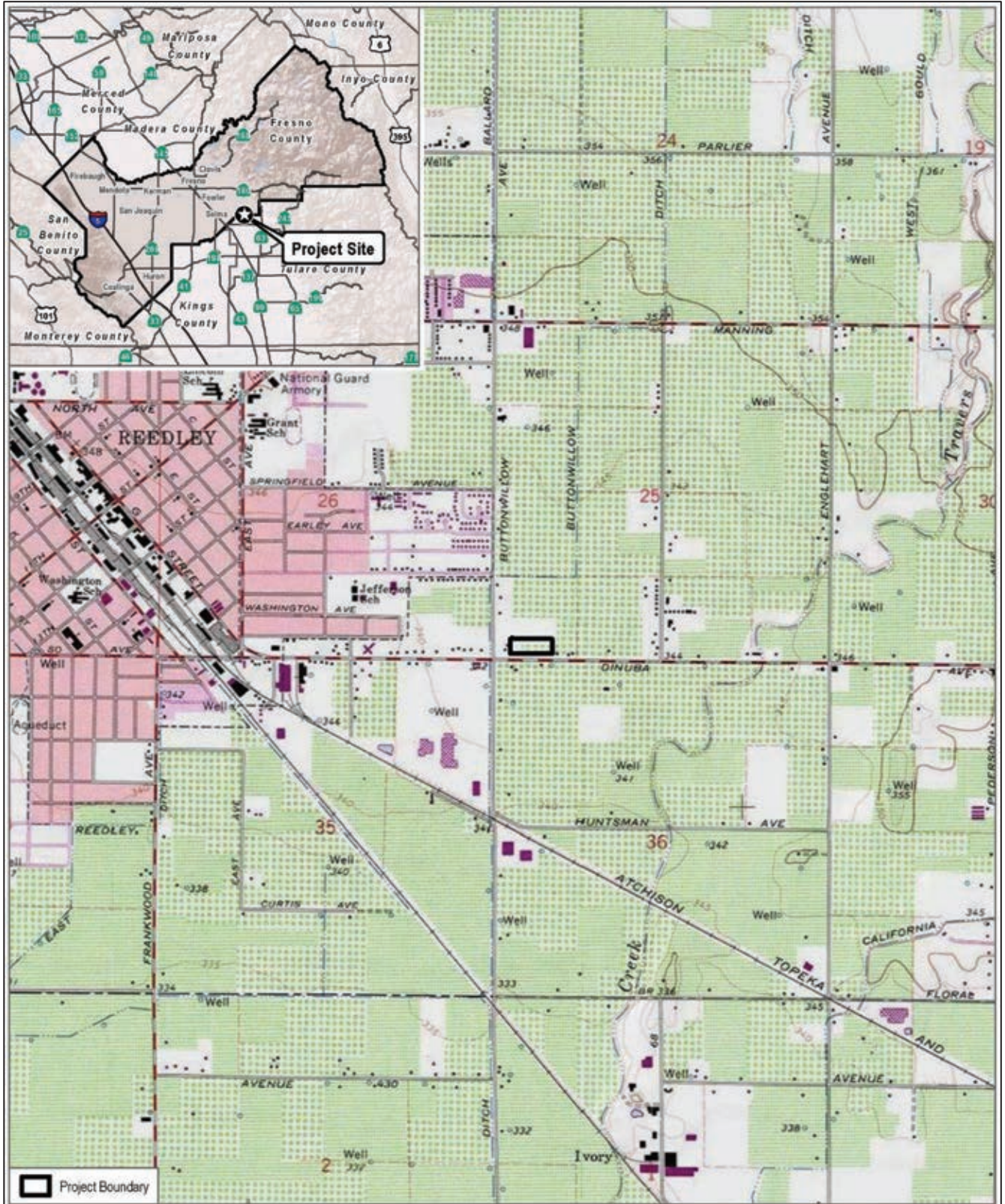
1630 San Pablo Avenue, Suite 300

Oakland, California 94612

T: 760.334.1156

wburns@dudek.com

Attachment: Figures 1 and 2. Project Location Maps



SOURCE: USGS 7.5-Minute Series Reedley Quadrangle

DUDEK 0 1,000 2,000 Feet

FIGURE 1
Project Location
Reedley DMV



SOURCE: Fresno County 2018, Bing Maps 2019



FIGURE 2
Aerial Map
 Reedley DMV

March 15, 2019

PN 11574

Mr. Grayson Coney, Cultural Director
T'si-Akim Maidu
P.O. Box 510
Browns Valley, CA 95918

***Subject: Department of Motor Vehicle Reedley Field Office Replacement Project,
City of Reedley, California - Native American Outreach***

Dear Mr. Coney:

We have been retained by the Department of General Services, Real Estate Services Division to complete a cultural resources investigation for construction of a proposed DMV field office, in compliance with the California Environmental Quality Act (CEQA) and relevant local municipal guidelines and regulations.

This project area is located in Section 25 of Township 15 South, Range 23 East, of the Reedley, California 7.5' USGS Quadrangle map. The approximately 3.5-acre project site is located at 1895 East Dinuba Avenue in the southeastern portion of the City of Reedley (Figures 1 and 2) approximately 9 miles east of State Route 99. The site is identified as three parcels: Assessor's Parcel Numbers 370-40-33, -34, and -35 and is located approximately 1 mile east of downtown Reedley in an area dominated by agricultural, residential, and industrial land uses. The site is located within a rectangular property bordered by East Cherry Lane to the north, East Dinuba Avenue to the south, South Orange Avenue to the east, and a commercial property with a gas station and mini-mart to the west, with South Buttonwillow Avenue located west of the commercial property. The existing project site is vacant agricultural land that is relatively flat and undeveloped, with no buildings, structures, or utilities present.

We have submitted and reviewed the results of search of the Sacred Lands Inventory on file with the Native American Heritage Commission (NAHC). The NAHC Sacred Lands Inventory search resulted in negative findings. However, the NAHC provided us your contact as someone who may have information regarding known or previously unrecorded cultural resources or sacred sites in the project vicinity.

We are reaching out to local Native American representatives and tribes to facilitate consultation on behalf of the DMV as part of the AB 52 consultation process with a request for any information relating to Native American resources in the vicinity of the proposed project. Any information you provide will remain confidential and be used for planning purposes for this project only. If you are

not comfortable describing the specific resource, we can document it as an “environmentally sensitive area.”

You may respond by mail, e-mail, telephone, or in person. You may also visit our office to review our research files. We expect your response within 14 days of receiving this letter. If you have any questions or comments, you can reach me by telephone at (760) 334-1156, or by e-mail at wburns@dudek.com. Thank you for your assistance with this project.

Sincerely,



William Burns, MSc., RPA

Archaeologist

DUDEK

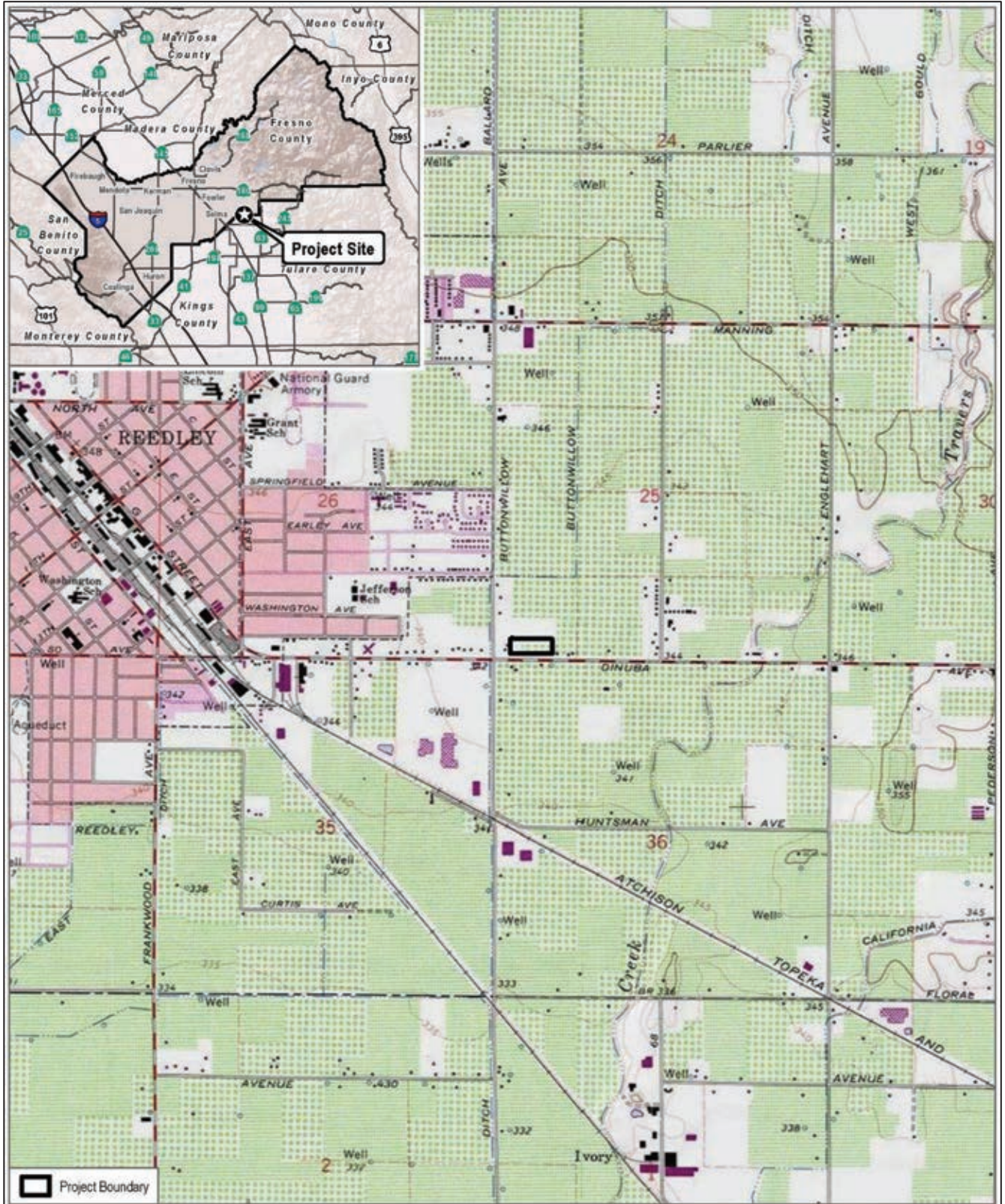
1630 San Pablo Avenue, Suite 300

Oakland, California 94612

T: 760.334.1156

wburns@dudek.com

Attachment: Figures 1 and 2. Project Location Maps



SOURCE: USGS 7.5-Minute Series Reedley Quadrangle



FIGURE 1
Project Location
 Reedley DMV



SOURCE: Fresno County 2018, Bing Maps 2019



FIGURE 2
Aerial Map
 Reedley DMV

March 15, 2019

PN 11574

Ms. Pamela Cubbler, Treasurer
Colfax-Todds Valley Consolidated Tribe
P.O. Box 4884
Auburn, CA 95604

***Subject: Department of Motor Vehicle Reedley Field Office Replacement Project,
City of Reedley, California - Native American Outreach***

Dear Ms. Cubbler:

We have been retained by the Department of General Services, Real Estate Services Division to complete a cultural resources investigation for construction of a proposed DMV field office, in compliance with the California Environmental Quality Act (CEQA) and relevant local municipal guidelines and regulations.

This project area is located in Section 25 of Township 15 South, Range 23 East, of the Reedley, California 7.5' USGS Quadrangle map. The approximately 3.5-acre project site is located at 1895 East Dinuba Avenue in the southeastern portion of the City of Reedley (Figures 1 and 2) approximately 9 miles east of State Route 99. The site is identified as three parcels: Assessor's Parcel Numbers 370-40-33, -34, and -35 and is located approximately 1 mile east of downtown Reedley in an area dominated by agricultural, residential, and industrial land uses. The site is located within a rectangular property bordered by East Cherry Lane to the north, East Dinuba Avenue to the south, South Orange Avenue to the east, and a commercial property with a gas station and mini-mart to the west, with South Buttonwillow Avenue located west of the commercial property. The existing project site is vacant agricultural land that is relatively flat and undeveloped, with no buildings, structures, or utilities present.

We have submitted and reviewed the results of search of the Sacred Lands Inventory on file with the Native American Heritage Commission (NAHC). The NAHC Sacred Lands Inventory search resulted in negative findings. However, the NAHC provided us your contact as someone who may have information regarding known or previously unrecorded cultural resources or sacred sites in the project vicinity.

We are reaching out to local Native American representatives and tribes to facilitate consultation on behalf of the DMV as part of the AB 52 consultation process with a request for any information relating to Native American resources in the vicinity of the proposed project. Any information you provide will remain confidential and be used for planning purposes for this project only. If you are

not comfortable describing the specific resource, we can document it as an “environmentally sensitive area.”

You may respond by mail, e-mail, telephone, or in person. You may also visit our office to review our research files. We expect your response within 14 days of receiving this letter. If you have any questions or comments, you can reach me by telephone at (760) 334-1156, or by e-mail at wburns@dudek.com. Thank you for your assistance with this project.

Sincerely,



William Burns, MSc., RPA

Archaeologist

DUDEK

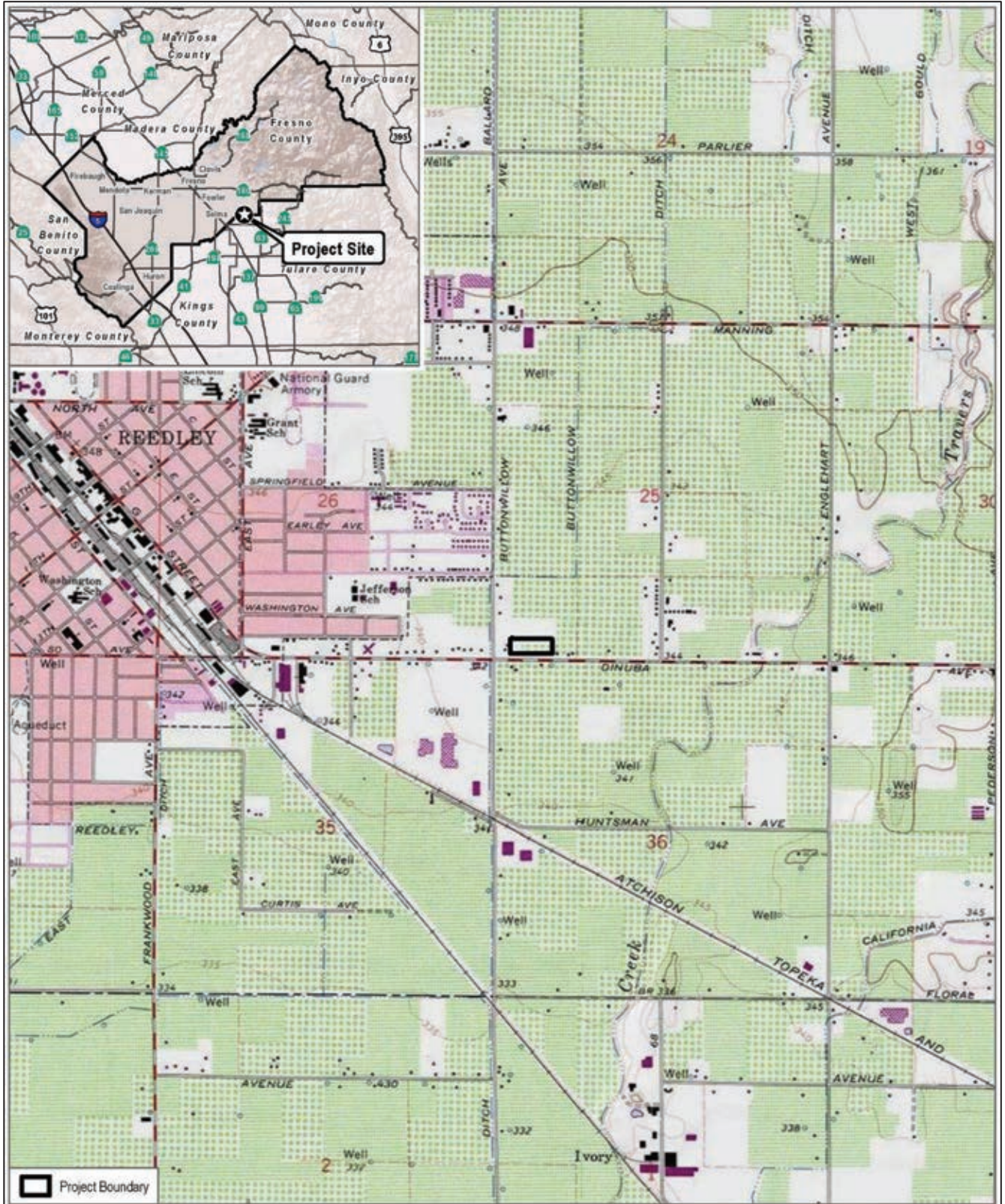
1630 San Pablo Avenue, Suite 300

Oakland, California 94612

T: 760.334.1156

wburns@dudek.com

Attachment: Figures 1 and 2. Project Location Maps



SOURCE: USGS 7.5-Minute Series Reedley Quadrangle



FIGURE 1
Project Location
 Reedley DMV



SOURCE: Fresno County 2018, Bing Maps 2019



FIGURE 2
Aerial Map
 Reedley DMV

March 15, 2019

PN 11574

Mr. Robert Ledger, Chairperson
Dumna Wo-Wah Tribal Government
2191 West Pico Avenue
Fresno, CA 93705

***Subject: Department of Motor Vehicle Reedley Field Office Replacement Project,
City of Reedley, California - Native American Outreach***

Dear Mr. Ledger:

We have been retained by the Department of General Services, Real Estate Services Division to complete a cultural resources investigation for construction of a proposed DMV field office, in compliance with the California Environmental Quality Act (CEQA) and relevant local municipal guidelines and regulations.

This project area is located in Section 25 of Township 15 South, Range 23 East, of the Reedley, California 7.5' USGS Quadrangle map. The approximately 3.5-acre project site is located at 1895 East Dinuba Avenue in the southeastern portion of the City of Reedley (Figures 1 and 2) approximately 9 miles east of State Route 99. The site is identified as three parcels: Assessor's Parcel Numbers 370-40-33, -34, and -35 and is located approximately 1 mile east of downtown Reedley in an area dominated by agricultural, residential, and industrial land uses. The site is located within a rectangular property bordered by East Cherry Lane to the north, East Dinuba Avenue to the south, South Orange Avenue to the east, and a commercial property with a gas station and mini-mart to the west, with South Buttonwillow Avenue located west of the commercial property. The existing project site is vacant agricultural land that is relatively flat and undeveloped, with no buildings, structures, or utilities present.

We have submitted and reviewed the results of search of the Sacred Lands Inventory on file with the Native American Heritage Commission (NAHC). The NAHC Sacred Lands Inventory search resulted in negative findings. However, the NAHC provided us your contact as someone who may have information regarding known or previously unrecorded cultural resources or sacred sites in the project vicinity.

We are reaching out to local Native American representatives and tribes to facilitate consultation on behalf of the DMV as part of the AB 52 consultation process with a request for any information relating to Native American resources in the vicinity of the proposed project. Any information you provide will remain confidential and be used for planning purposes for this project only. If you are

not comfortable describing the specific resource, we can document it as an “environmentally sensitive area.”

You may respond by mail, e-mail, telephone, or in person. You may also visit our office to review our research files. We expect your response within 14 days of receiving this letter. If you have any questions or comments, you can reach me by telephone at (760) 334-1156, or by e-mail at wburns@dudek.com. Thank you for your assistance with this project.

Sincerely,



William Burns, MSc., RPA

Archaeologist

DUDEK

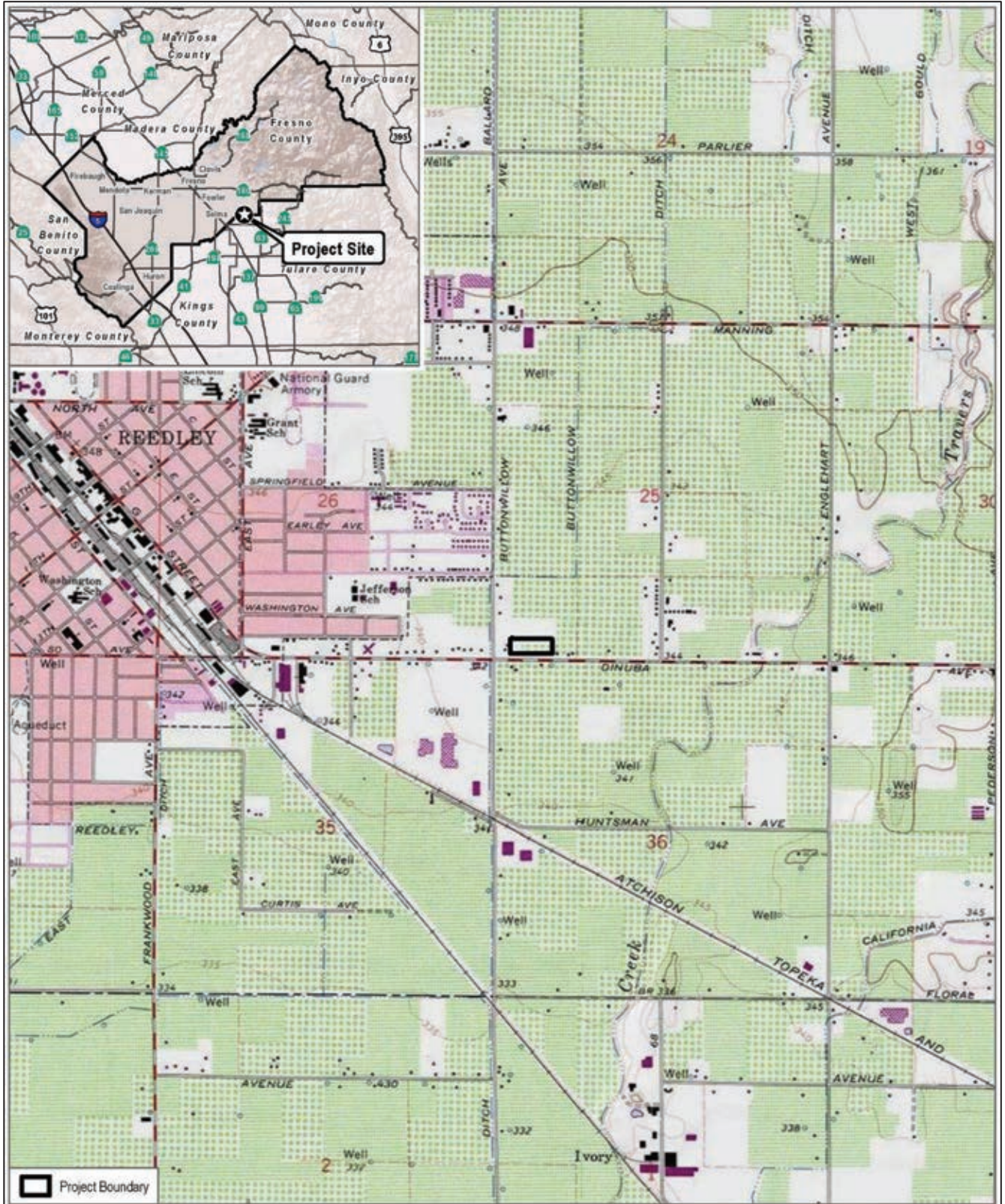
1630 San Pablo Avenue, Suite 300

Oakland, California 94612

T: 760.334.1156

wburns@dudek.com

Attachment: Figures 1 and 2. Project Location Maps



SOURCE: USGS 7.5-Minute Series Reedley Quadrangle



FIGURE 1
Project Location
 Reedley DMV



SOURCE: Fresno County 2018, Bing Maps 2019



FIGURE 2
Aerial Map
 Reedley DMV

March 15, 2019

PN 11574

Mr. Rick Osborne, Cultural Resources
Traditional Choinumni Tribe
2415 E. Houston Avenue
Fresno, CA 93720

***Subject: Department of Motor Vehicle Reedley Field Office Replacement Project,
City of Reedley, California - Native American Outreach***

Dear Mr. Osborne:

We have been retained by the Department of General Services, Real Estate Services Division to complete a cultural resources investigation for construction of a proposed DMV field office, in compliance with the California Environmental Quality Act (CEQA) and relevant local municipal guidelines and regulations.

This project area is located in Section 25 of Township 15 South, Range 23 East, of the Reedley, California 7.5' USGS Quadrangle map. The approximately 3.5-acre project site is located at 1895 East Dinuba Avenue in the southeastern portion of the City of Reedley (Figures 1 and 2) approximately 9 miles east of State Route 99. The site is identified as three parcels: Assessor's Parcel Numbers 370-40-33, -34, and -35 and is located approximately 1 mile east of downtown Reedley in an area dominated by agricultural, residential, and industrial land uses. The site is located within a rectangular property bordered by East Cherry Lane to the north, East Dinuba Avenue to the south, South Orange Avenue to the east, and a commercial property with a gas station and mini-mart to the west, with South Buttonwillow Avenue located west of the commercial property. The existing project site is vacant agricultural land that is relatively flat and undeveloped, with no buildings, structures, or utilities present.

We have submitted and reviewed the results of search of the Sacred Lands Inventory on file with the Native American Heritage Commission (NAHC). The NAHC Sacred Lands Inventory search resulted in negative findings. However, the NAHC provided us your contact as someone who may have information regarding known or previously unrecorded cultural resources or sacred sites in the project vicinity.

We are reaching out to local Native American representatives and tribes to facilitate consultation on behalf of the DMV as part of the AB 52 consultation process with a request for any information relating to Native American resources in the vicinity of the proposed project. Any information you provide will remain confidential and be used for planning purposes for this project only. If you are

not comfortable describing the specific resource, we can document it as an “environmentally sensitive area.”

You may respond by mail, e-mail, telephone, or in person. You may also visit our office to review our research files. We expect your response within 14 days of receiving this letter. If you have any questions or comments, you can reach me by telephone at (760) 334-1156, or by e-mail at wburns@dudek.com. Thank you for your assistance with this project.

Sincerely,



William Burns, MSc., RPA

Archaeologist

DUDEK

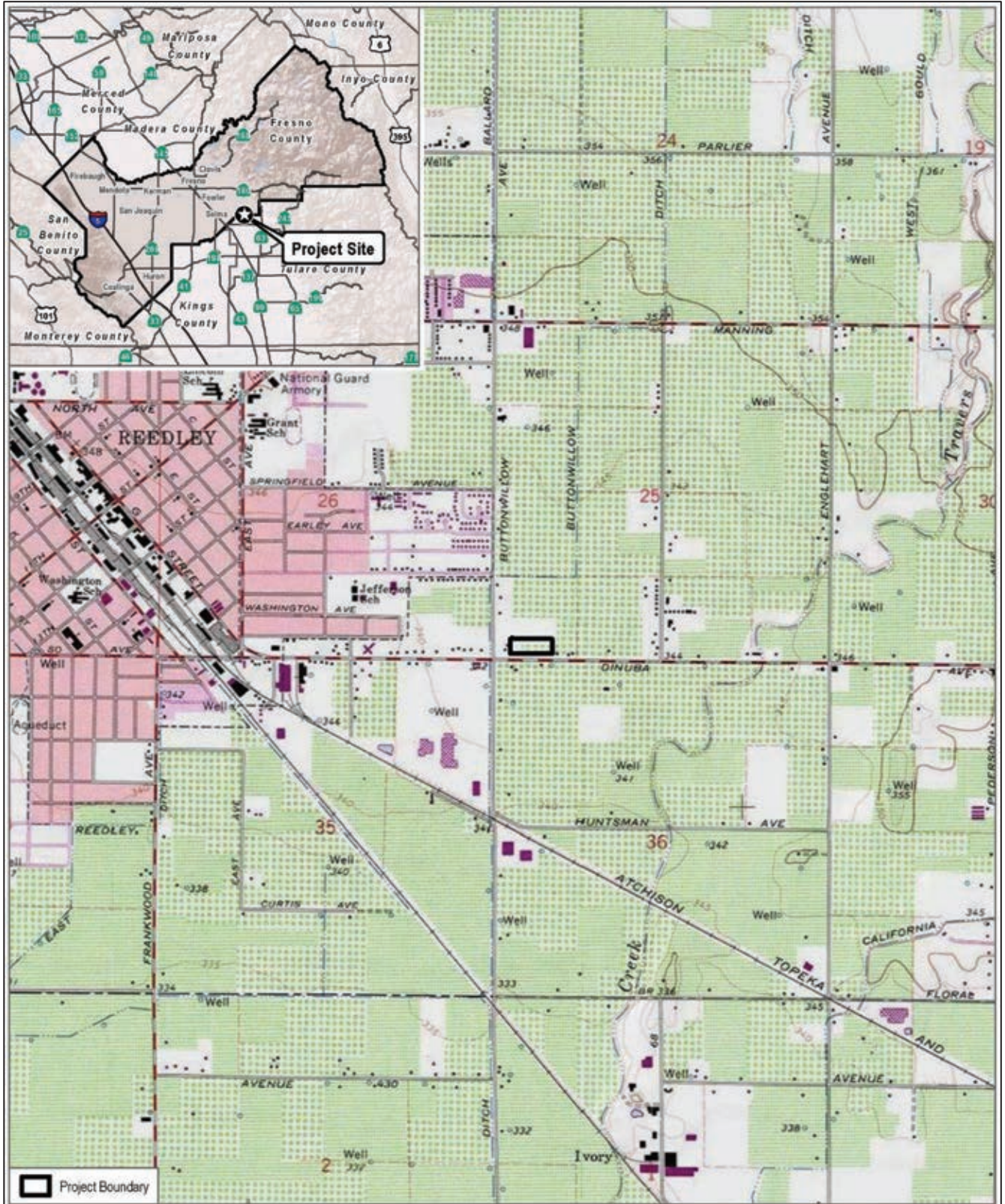
1630 San Pablo Avenue, Suite 300

Oakland, California 94612

T: 760.334.1156

wburns@dudek.com

Attachment: Figures 1 and 2. Project Location Maps



SOURCE: USGS 7.5-Minute Series Reedley Quadrangle



FIGURE 1
Project Location
 Reedley DMV



SOURCE: Fresno County 2018, Bing Maps 2019



FIGURE 2
Aerial Map
 Reedley DMV

March 15, 2019

PN 11574

Mr. Bob Pennell, Cultural Resources Director
Table Mountain Rancheria
PO Box 410
Friant, CA 93626

***Subject: Department of Motor Vehicle Reedley Field Office Replacement Project,
City of Reedley, California - Native American Outreach***

Dear Mr. Pennell:

We have been retained by the Department of General Services, Real Estate Services Division to complete a cultural resources investigation for construction of a proposed DMV field office, in compliance with the California Environmental Quality Act (CEQA) and relevant local municipal guidelines and regulations.

This project area is located in Section 25 of Township 15 South, Range 23 East, of the Reedley, California 7.5' USGS Quadrangle map. The approximately 3.5-acre project site is located at 1895 East Dinuba Avenue in the southeastern portion of the City of Reedley (Figures 1 and 2) approximately 9 miles east of State Route 99. The site is identified as three parcels: Assessor's Parcel Numbers 370-40-33, -34, and -35 and is located approximately 1 mile east of downtown Reedley in an area dominated by agricultural, residential, and industrial land uses. The site is located within a rectangular property bordered by East Cherry Lane to the north, East Dinuba Avenue to the south, South Orange Avenue to the east, and a commercial property with a gas station and mini-mart to the west, with South Buttonwillow Avenue located west of the commercial property. The existing project site is vacant agricultural land that is relatively flat and undeveloped, with no buildings, structures, or utilities present.

We have submitted and reviewed the results of search of the Sacred Lands Inventory on file with the Native American Heritage Commission (NAHC). The NAHC Sacred Lands Inventory search resulted in negative findings. However, the NAHC provided us your contact as someone who may have information regarding known or previously unrecorded cultural resources or sacred sites in the project vicinity.

We are reaching out to local Native American representatives and tribes to facilitate consultation on behalf of the DMV as part of the AB 52 consultation process with a request for any information relating to Native American resources in the vicinity of the proposed project. Any information you provide will remain confidential and be used for planning purposes for this project only. If you are

not comfortable describing the specific resource, we can document it as an “environmentally sensitive area.”

You may respond by mail, e-mail, telephone, or in person. You may also visit our office to review our research files. We expect your response within 14 days of receiving this letter. If you have any questions or comments, you can reach me by telephone at (760) 334-1156, or by e-mail at wburns@dudek.com. Thank you for your assistance with this project.

Sincerely,



William Burns, MSc., RPA

Archaeologist

DUDEK

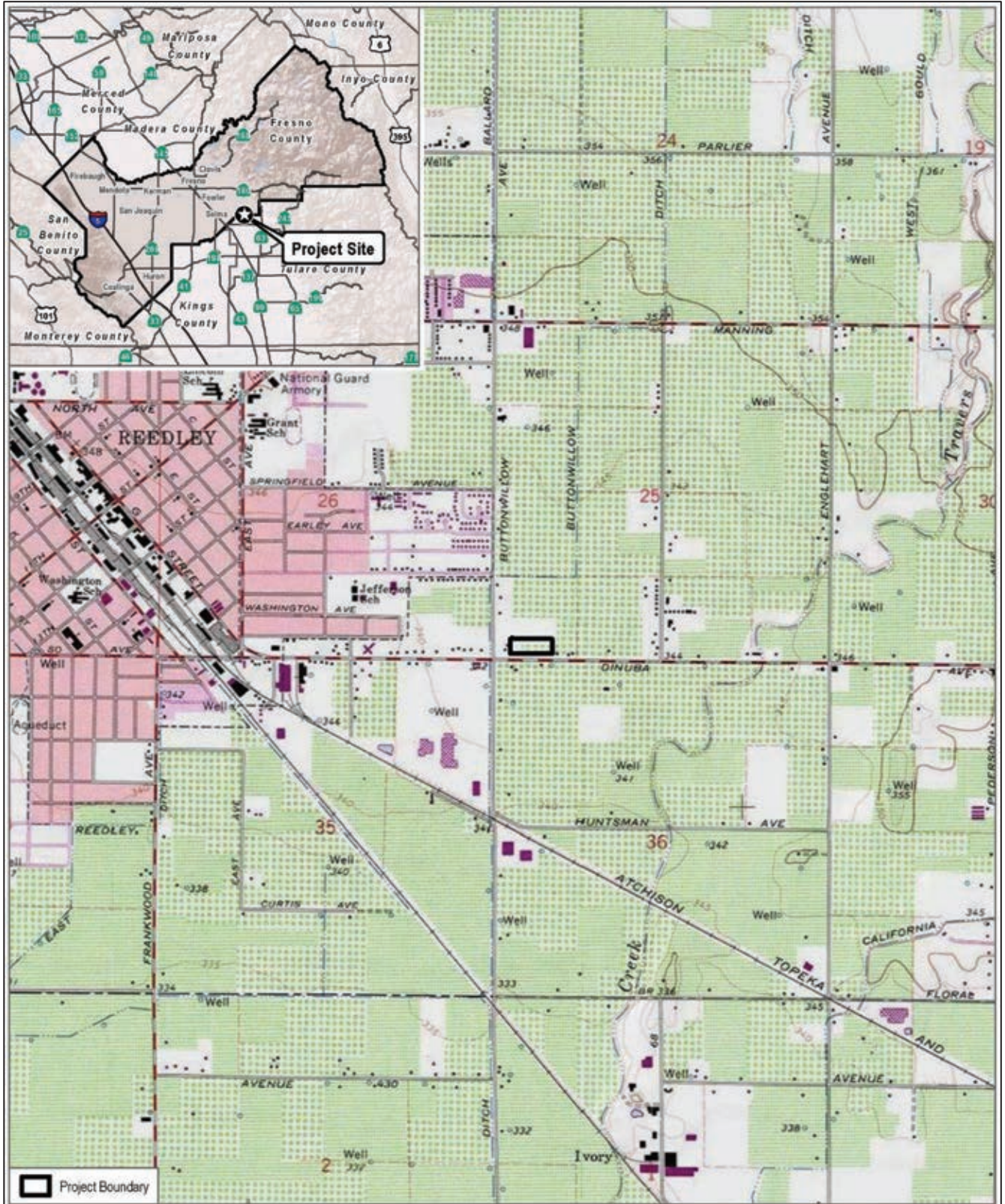
1630 San Pablo Avenue, Suite 300

Oakland, California 94612

T: 760.334.1156

wburns@dudek.com

Attachment: Figures 1 and 2. Project Location Maps



SOURCE: USGS 7.5-Minute Series Reedley Quadrangle

DUDEK  0 1,000 2,000 Feet

FIGURE 1
Project Location
Reedley DMV



SOURCE: Fresno County 2018, Bing Maps 2019



FIGURE 2
Aerial Map
 Reedley DMV

March 15, 2019

PN 11574

Mr. Clyde Prout, Chairman
Colfax-Todds Valley Consolidated Tribe
P.O. Box 4884
Auburn, CA 95604

***Subject: Department of Motor Vehicle Reedley Field Office Replacement Project,
City of Reedley, California - Native American Outreach***

Dear Mr. Prout:

We have been retained by the Department of General Services, Real Estate Services Division to complete a cultural resources investigation for construction of a proposed DMV field office, in compliance with the California Environmental Quality Act (CEQA) and relevant local municipal guidelines and regulations.

This project area is located in Section 25 of Township 15 South, Range 23 East, of the Reedley, California 7.5' USGS Quadrangle map. The approximately 3.5-acre project site is located at 1895 East Dinuba Avenue in the southeastern portion of the City of Reedley (Figures 1 and 2) approximately 9 miles east of State Route 99. The site is identified as three parcels: Assessor's Parcel Numbers 370-40-33, -34, and -35 and is located approximately 1 mile east of downtown Reedley in an area dominated by agricultural, residential, and industrial land uses. The site is located within a rectangular property bordered by East Cherry Lane to the north, East Dinuba Avenue to the south, South Orange Avenue to the east, and a commercial property with a gas station and mini-mart to the west, with South Buttonwillow Avenue located west of the commercial property. The existing project site is vacant agricultural land that is relatively flat and undeveloped, with no buildings, structures, or utilities present.

We have submitted and reviewed the results of search of the Sacred Lands Inventory on file with the Native American Heritage Commission (NAHC). The NAHC Sacred Lands Inventory search resulted in negative findings. However, the NAHC provided us your contact as someone who may have information regarding known or previously unrecorded cultural resources or sacred sites in the project vicinity.

We are reaching out to local Native American representatives and tribes to facilitate consultation on behalf of the DMV as part of the AB 52 consultation process with a request for any information relating to Native American resources in the vicinity of the proposed project. Any information you provide will remain confidential and be used for planning purposes for this project only. If you are

not comfortable describing the specific resource, we can document it as an “environmentally sensitive area.”

You may respond by mail, e-mail, telephone, or in person. You may also visit our office to review our research files. We expect your response within 14 days of receiving this letter. If you have any questions or comments, you can reach me by telephone at (760) 334-1156, or by e-mail at wburns@dudek.com. Thank you for your assistance with this project.

Sincerely,



William Burns, MSc., RPA

Archaeologist

DUDEK

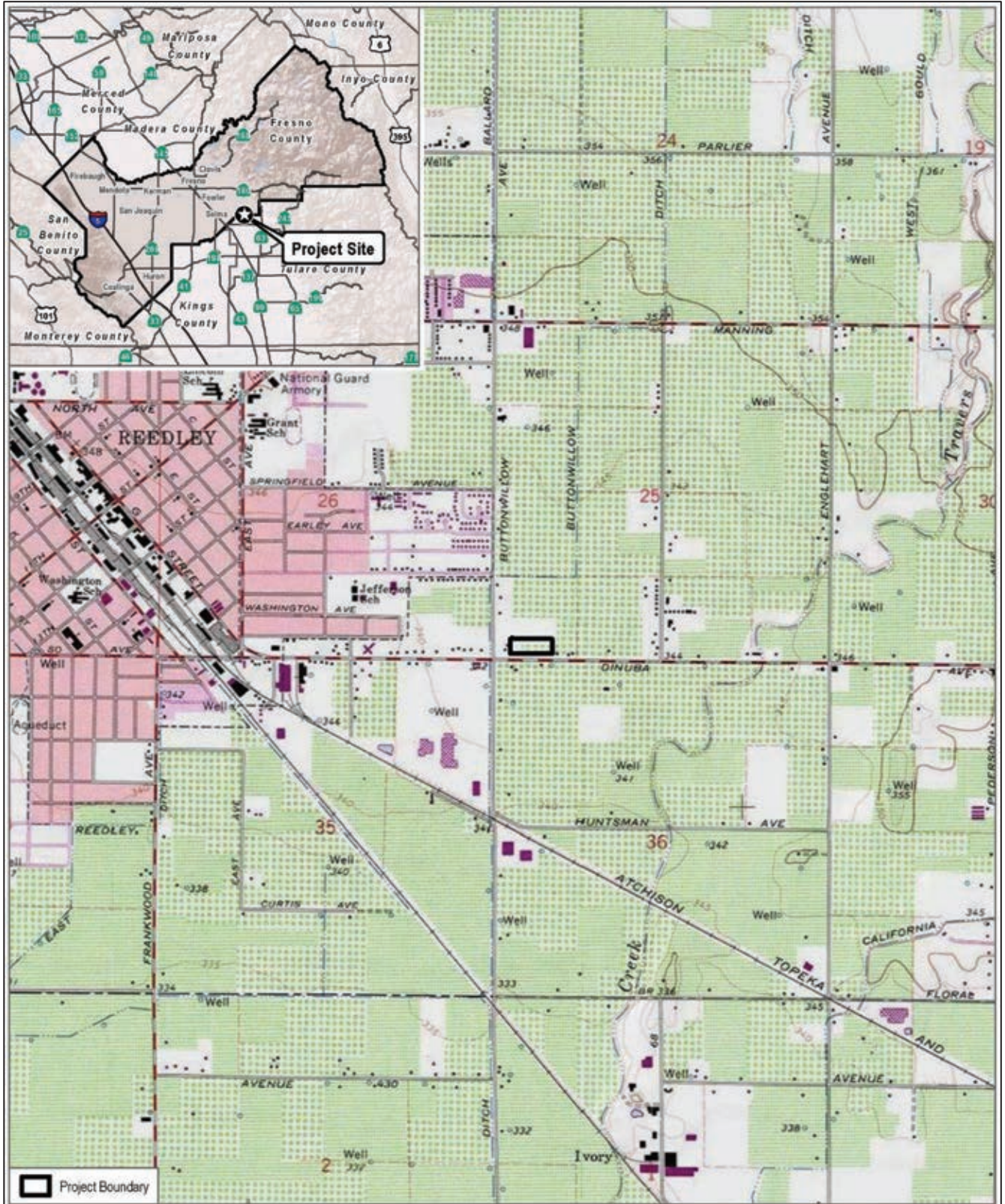
1630 San Pablo Avenue, Suite 300

Oakland, California 94612

T: 760.334.1156

wburns@dudek.com

Attachment: Figures 1 and 2. Project Location Maps



SOURCE: USGS 7.5-Minute Series Reedley Quadrangle



FIGURE 1
Project Location
 Reedley DMV



SOURCE: Fresno County 2018, Bing Maps 2019



FIGURE 2
Aerial Map
 Reedley DMV

March 15, 2019

PN 11574

Mr. Don Ryberg, Chairperson
T'si-Akim Maidu
P.O. Box 510
Browns Valley, CA 95918

***Subject: Department of Motor Vehicle Reedley Field Office Replacement Project,
City of Reedley, California - Native American Outreach***

Dear Mr. Ryberg:

We have been retained by the Department of General Services, Real Estate Services Division to complete a cultural resources investigation for construction of a proposed DMV field office, in compliance with the California Environmental Quality Act (CEQA) and relevant local municipal guidelines and regulations.

This project area is located in Section 25 of Township 15 South, Range 23 East, of the Reedley, California 7.5' USGS Quadrangle map. The approximately 3.5-acre project site is located at 1895 East Dinuba Avenue in the southeastern portion of the City of Reedley (Figures 1 and 2) approximately 9 miles east of State Route 99. The site is identified as three parcels: Assessor's Parcel Numbers 370-40-33, -34, and -35 and is located approximately 1 mile east of downtown Reedley in an area dominated by agricultural, residential, and industrial land uses. The site is located within a rectangular property bordered by East Cherry Lane to the north, East Dinuba Avenue to the south, South Orange Avenue to the east, and a commercial property with a gas station and mini-mart to the west, with South Buttonwillow Avenue located west of the commercial property. The existing project site is vacant agricultural land that is relatively flat and undeveloped, with no buildings, structures, or utilities present.

We have submitted and reviewed the results of search of the Sacred Lands Inventory on file with the Native American Heritage Commission (NAHC). The NAHC Sacred Lands Inventory search resulted in negative findings. However, the NAHC provided us your contact as someone who may have information regarding known or previously unrecorded cultural resources or sacred sites in the project vicinity.

We are reaching out to local Native American representatives and tribes to facilitate consultation on behalf of the DMV as part of the AB 52 consultation process with a request for any information relating to Native American resources in the vicinity of the proposed project. Any information you provide will remain confidential and be used for planning purposes for this project only. If you are

not comfortable describing the specific resource, we can document it as an “environmentally sensitive area.”

You may respond by mail, e-mail, telephone, or in person. You may also visit our office to review our research files. We expect your response within 14 days of receiving this letter. If you have any questions or comments, you can reach me by telephone at (760) 334-1156, or by e-mail at wburns@dudek.com. Thank you for your assistance with this project.

Sincerely,



William Burns, MSc., RPA

Archaeologist

DUDEK

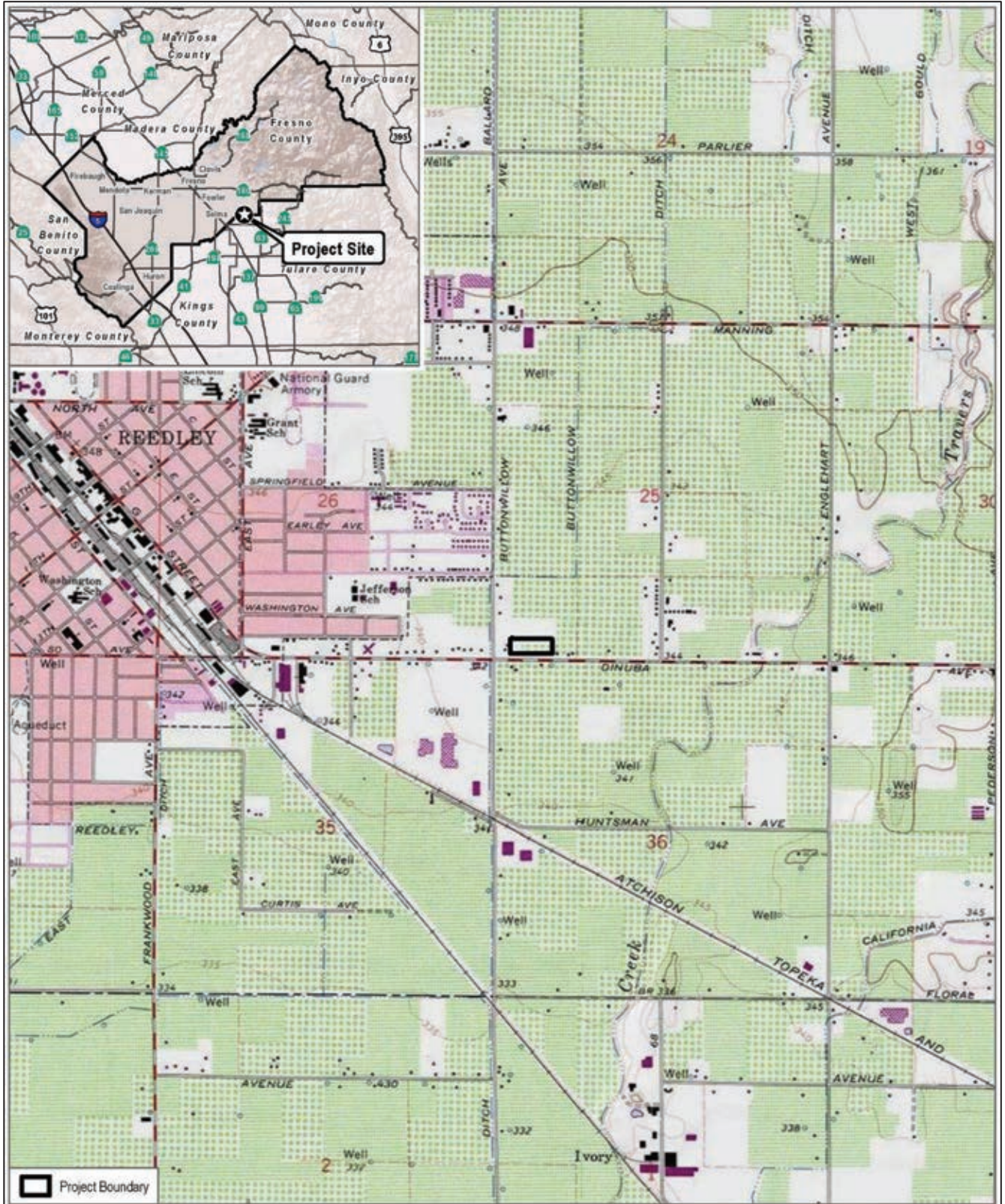
1630 San Pablo Avenue, Suite 300

Oakland, California 94612

T: 760.334.1156

wburns@dudek.com

Attachment: Figures 1 and 2. Project Location Maps



SOURCE: USGS 7.5-Minute Series Reedley Quadrangle



FIGURE 1
Project Location
 Reedley DMV



SOURCE: Fresno County 2018, Bing Maps 2019



FIGURE 2
Aerial Map
 Reedley DMV

March 15, 2019

PN 11574

Ms. Leanne Walker-Grant, Chairperson
Table Mountain Rancheria
PO Box 410
Friant, CA 93626

***Subject: Department of Motor Vehicle Reedley Field Office Replacement Project,
City of Reedley, California - Native American Outreach***

Dear Ms. Walker-Grant:

We have been retained by the Department of General Services, Real Estate Services Division to complete a cultural resources investigation for construction of a proposed DMV field office, in compliance with the California Environmental Quality Act (CEQA) and relevant local municipal guidelines and regulations.

This project area is located in Section 25 of Township 15 South, Range 23 East, of the Reedley, California 7.5' USGS Quadrangle map. The approximately 3.5-acre project site is located at 1895 East Dinuba Avenue in the southeastern portion of the City of Reedley (Figures 1 and 2) approximately 9 miles east of State Route 99. The site is identified as three parcels: Assessor's Parcel Numbers 370-40-33, -34, and -35 and is located approximately 1 mile east of downtown Reedley in an area dominated by agricultural, residential, and industrial land uses. The site is located within a rectangular property bordered by East Cherry Lane to the north, East Dinuba Avenue to the south, South Orange Avenue to the east, and a commercial property with a gas station and mini-mart to the west, with South Buttonwillow Avenue located west of the commercial property. The existing project site is vacant agricultural land that is relatively flat and undeveloped, with no buildings, structures, or utilities present.

We have submitted and reviewed the results of search of the Sacred Lands Inventory on file with the Native American Heritage Commission (NAHC). The NAHC Sacred Lands Inventory search resulted in negative findings. However, the NAHC provided us your contact as someone who may have information regarding known or previously unrecorded cultural resources or sacred sites in the project vicinity.

We are reaching out to local Native American representatives and tribes to facilitate consultation on behalf of the DMV as part of the AB 52 consultation process with a request for any information relating to Native American resources in the vicinity of the proposed project. Any information you provide will remain confidential and be used for planning purposes for this project only. If you are

not comfortable describing the specific resource, we can document it as an “environmentally sensitive area.”

You may respond by mail, e-mail, telephone, or in person. You may also visit our office to review our research files. We expect your response within 14 days of receiving this letter. If you have any questions or comments, you can reach me by telephone at (760) 334-1156, or by e-mail at wburns@dudek.com. Thank you for your assistance with this project.

Sincerely,



William Burns, MSc., RPA

Archaeologist

DUDEK

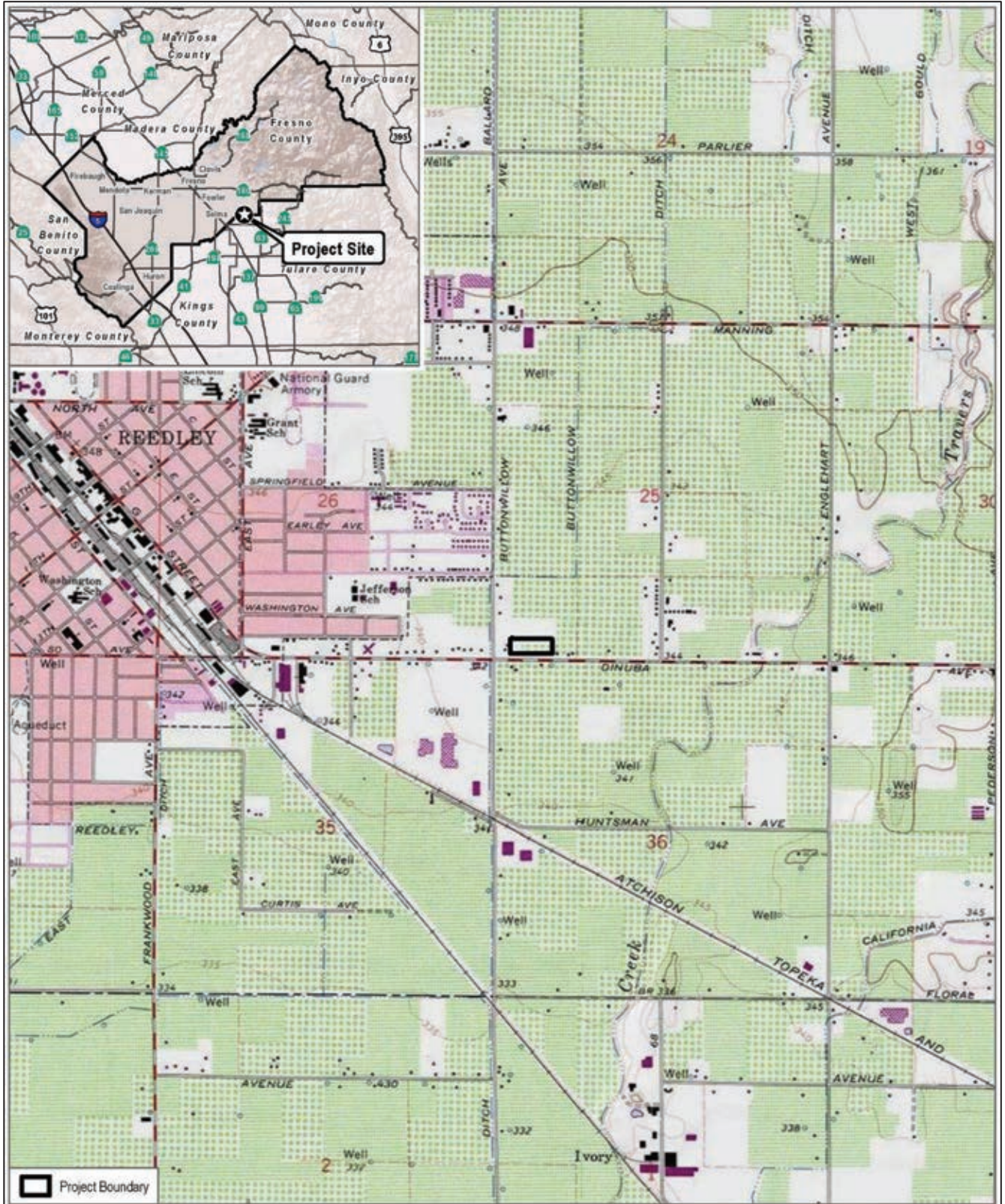
1630 San Pablo Avenue, Suite 300

Oakland, California 94612

T: 760.334.1156

wburns@dudek.com

Attachment: Figures 1 and 2. Project Location Maps



SOURCE: USGS 7.5-Minute Series Reedley Quadrangle



FIGURE 1
Project Location
 Reedley DMV



SOURCE: Fresno County 2018, Bing Maps 2019



FIGURE 2
Aerial Map
 Reedley DMV

March 15, 2019

PN 11574

Mr. Gene Whitehouse, Chairperson
United Auburn Indian Community of the Auburn Rancheria
10720 Indian Hill Road
Auburn, CA 95603

***Subject: Department of Motor Vehicle Reedley Field Office Replacement Project,
City of Reedley, California - Native American Outreach***

Dear Mr. Whitehouse:

We have been retained by the Department of General Services, Real Estate Services Division to complete a cultural resources investigation for construction of a proposed DMV field office, in compliance with the California Environmental Quality Act (CEQA) and relevant local municipal guidelines and regulations.

This project area is located in Section 25 of Township 15 South, Range 23 East, of the Reedley, California 7.5' USGS Quadrangle map. The approximately 3.5-acre project site is located at 1895 East Dinuba Avenue in the southeastern portion of the City of Reedley (Figures 1 and 2) approximately 9 miles east of State Route 99. The site is identified as three parcels: Assessor's Parcel Numbers 370-40-33, -34, and -35 and is located approximately 1 mile east of downtown Reedley in an area dominated by agricultural, residential, and industrial land uses. The site is located within a rectangular property bordered by East Cherry Lane to the north, East Dinuba Avenue to the south, South Orange Avenue to the east, and a commercial property with a gas station and mini-mart to the west, with South Buttonwillow Avenue located west of the commercial property. The existing project site is vacant agricultural land that is relatively flat and undeveloped, with no buildings, structures, or utilities present.

We have submitted and reviewed the results of search of the Sacred Lands Inventory on file with the Native American Heritage Commission (NAHC). The NAHC Sacred Lands Inventory search resulted in negative findings. However, the NAHC provided us your contact as someone who may have information regarding known or previously unrecorded cultural resources or sacred sites in the project vicinity.

We are reaching out to local Native American representatives and tribes to facilitate consultation on behalf of the DMV as part of the AB 52 consultation process with a request for any information relating to Native American resources in the vicinity of the proposed project. Any information you provide will remain confidential and be used for planning purposes for this project only. If you are

not comfortable describing the specific resource, we can document it as an “environmentally sensitive area.”

You may respond by mail, e-mail, telephone, or in person. You may also visit our office to review our research files. We expect your response within 14 days of receiving this letter. If you have any questions or comments, you can reach me by telephone at (760) 334-1156, or by e-mail at wburns@dudek.com. Thank you for your assistance with this project.

Sincerely,



William Burns, MSc., RPA

Archaeologist

DUDEK

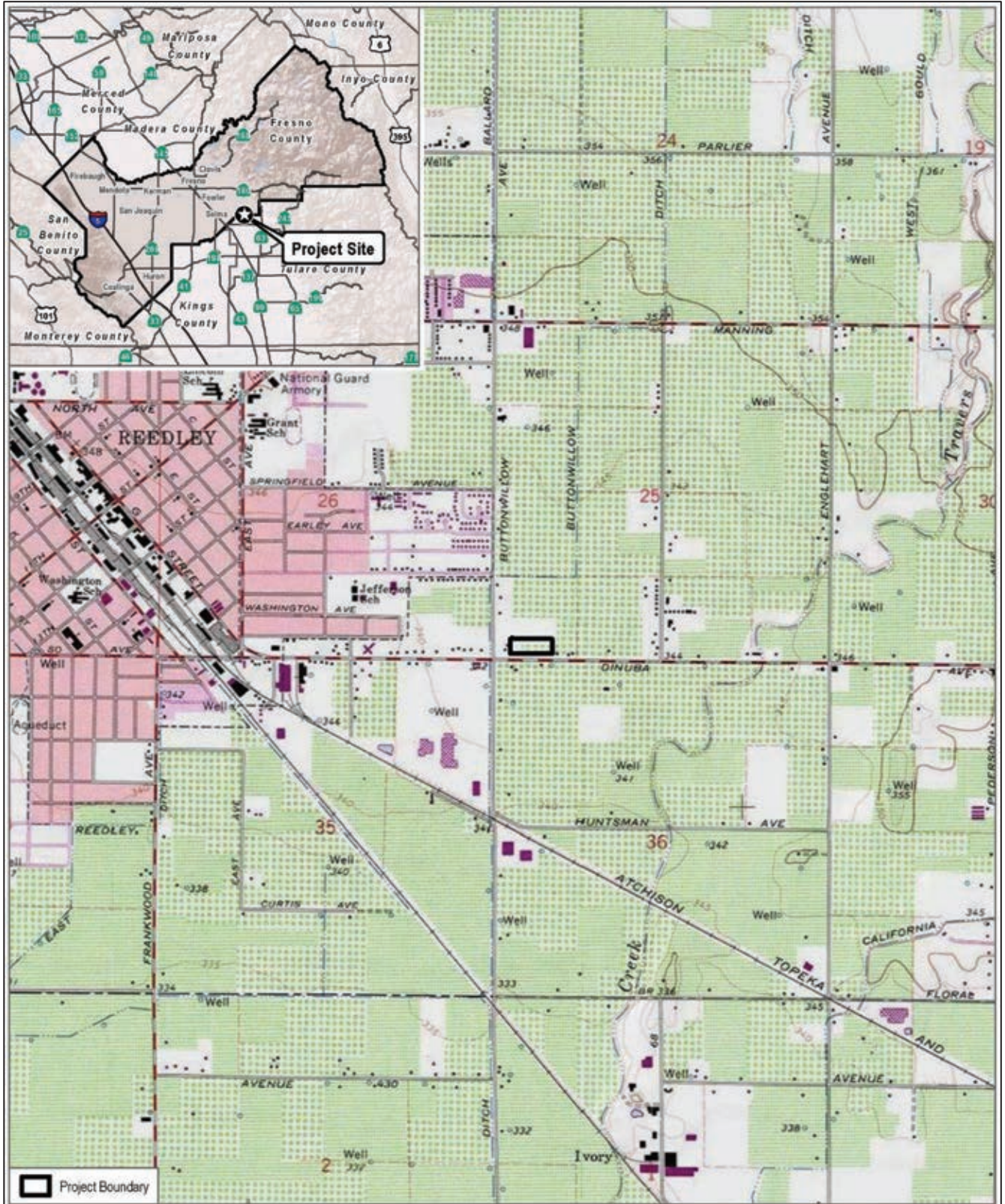
1630 San Pablo Avenue, Suite 300

Oakland, California 94612

T: 760.334.1156

wburns@dudek.com

Attachment: Figures 1 and 2. Project Location Maps



SOURCE: USGS 7.5-Minute Series Reedley Quadrangle



FIGURE 1
Project Location
 Reedley DMV



SOURCE: Fresno County 2018, Bing Maps 2019



FIGURE 2
Aerial Map
 Reedley DMV

March 15, 2019

PN 11574

Mr. Kenneth Woodrow, Chairperson
Wuksache Indian Tribe/ Eshom Valley Band
1179 Rock Haven Ct.
Salinas, CA 93906

***Subject: Department of Motor Vehicle Reedley Field Office Replacement Project,
City of Reedley, California - Native American Outreach***

Dear Mr. Woodrow:

We have been retained by the Department of General Services, Real Estate Services Division to complete a cultural resources investigation for construction of a proposed DMV field office, in compliance with the California Environmental Quality Act (CEQA) and relevant local municipal guidelines and regulations.

This project area is located in Section 25 of Township 15 South, Range 23 East, of the Reedley, California 7.5' USGS Quadrangle map. The approximately 3.5-acre project site is located at 1895 East Dinuba Avenue in the southeastern portion of the City of Reedley (Figures 1 and 2) approximately 9 miles east of State Route 99. The site is identified as three parcels: Assessor's Parcel Numbers 370-40-33, -34, and -35 and is located approximately 1 mile east of downtown Reedley in an area dominated by agricultural, residential, and industrial land uses. The site is located within a rectangular property bordered by East Cherry Lane to the north, East Dinuba Avenue to the south, South Orange Avenue to the east, and a commercial property with a gas station and mini-mart to the west, with South Buttonwillow Avenue located west of the commercial property. The existing project site is vacant agricultural land that is relatively flat and undeveloped, with no buildings, structures, or utilities present.

We have submitted and reviewed the results of search of the Sacred Lands Inventory on file with the Native American Heritage Commission (NAHC). The NAHC Sacred Lands Inventory search resulted in negative findings. However, the NAHC provided us your contact as someone who may have information regarding known or previously unrecorded cultural resources or sacred sites in the project vicinity.

We are reaching out to local Native American representatives and tribes to facilitate consultation on behalf of the DMV as part of the AB 52 consultation process with a request for any information relating to Native American resources in the vicinity of the proposed project. Any information you provide will remain confidential and be used for planning purposes for this project only. If you are

not comfortable describing the specific resource, we can document it as an “environmentally sensitive area.”

You may respond by mail, e-mail, telephone, or in person. You may also visit our office to review our research files. We expect your response within 14 days of receiving this letter. If you have any questions or comments, you can reach me by telephone at (760) 334-1156, or by e-mail at wburns@dudek.com. Thank you for your assistance with this project.

Sincerely,

A handwritten signature in black ink, appearing to read "William Burns", is written over a horizontal line.

William Burns, MSc., RPA

Archaeologist

DUDEK

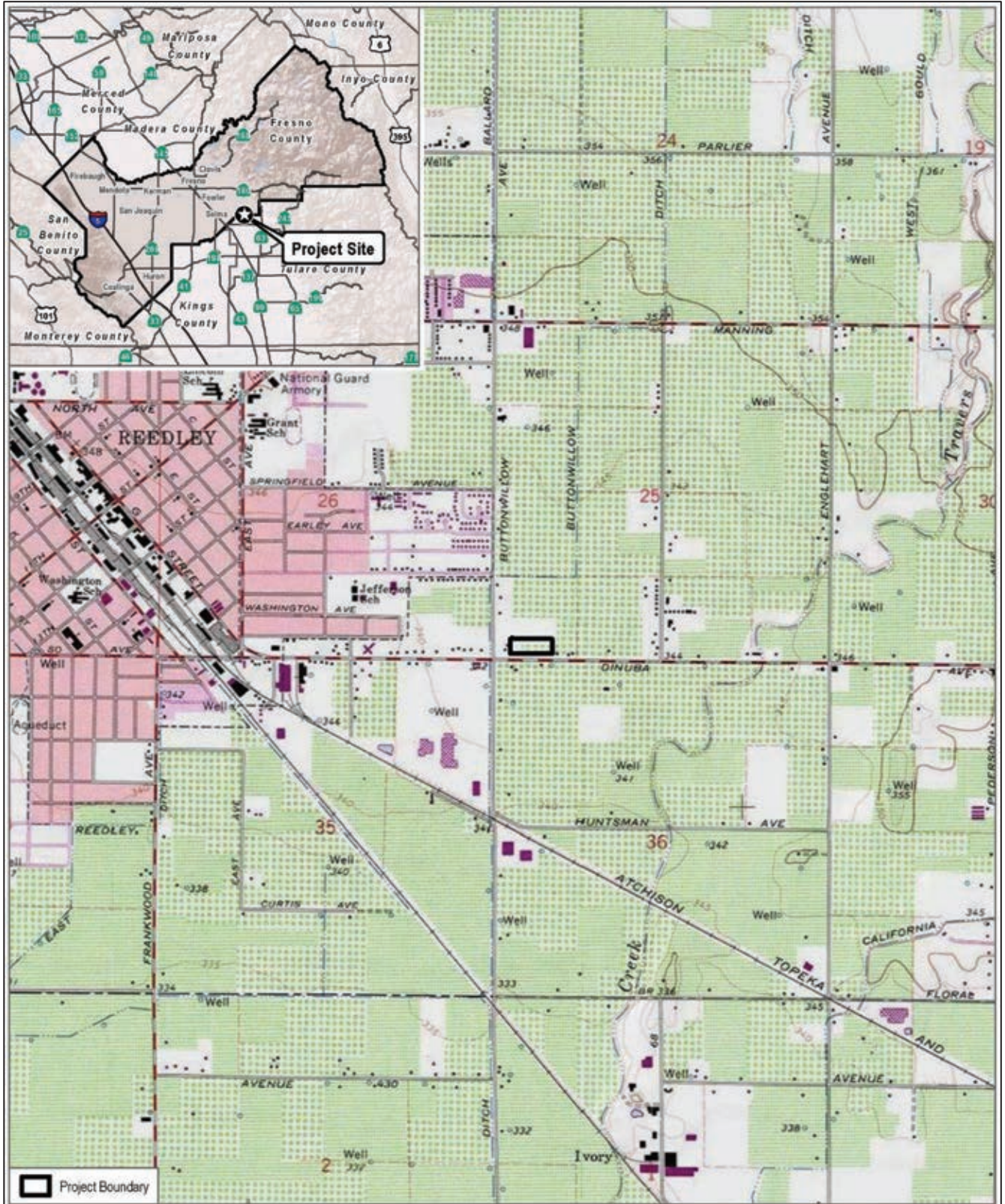
1630 San Pablo Avenue, Suite 300

Oakland, California 94612

T: 760.334.1156

wburns@dudek.com

Attachment: Figures 1 and 2. Project Location Maps



SOURCE: USGS 7.5-Minute Series Reedley Quadrangle



FIGURE 1
Project Location
Reedley DMV



SOURCE: Fresno County 2018, Bing Maps 2019



FIGURE 2
Aerial Map
 Reedley DMV

March 15, 2019

PN 11574

Ms. Irene Zwierlein, Chairperson
Amah Mutsun Tribal Band of Mission San Juan Bautista Ohlone Costanoan
789 Canada Road
Woodside, CA 94062

***Subject: Department of Motor Vehicle Reedley Field Office Replacement Project,
City of Reedley, California - Native American Outreach***

Dear Ms. Zwierlein:

We have been retained by the Department of General Services, Real Estate Services Division to complete a cultural resources investigation for construction of a proposed DMV field office, in compliance with the California Environmental Quality Act (CEQA) and relevant local municipal guidelines and regulations.

This project area is located in Section 25 of Township 15 South, Range 23 East, of the Reedley, California 7.5' USGS Quadrangle map. The approximately 3.5-acre project site is located at 1895 East Dinuba Avenue in the southeastern portion of the City of Reedley (Figures 1 and 2) approximately 9 miles east of State Route 99. The site is identified as three parcels: Assessor's Parcel Numbers 370-40-33, -34, and -35 and is located approximately 1 mile east of downtown Reedley in an area dominated by agricultural, residential, and industrial land uses. The site is located within a rectangular property bordered by East Cherry Lane to the north, East Dinuba Avenue to the south, South Orange Avenue to the east, and a commercial property with a gas station and mini-mart to the west, with South Buttonwillow Avenue located west of the commercial property. The existing project site is vacant agricultural land that is relatively flat and undeveloped, with no buildings, structures, or utilities present.

We have submitted and reviewed the results of search of the Sacred Lands Inventory on file with the Native American Heritage Commission (NAHC). The NAHC Sacred Lands Inventory search resulted in negative findings. However, the NAHC provided us your contact as someone who may have information regarding known or previously unrecorded cultural resources or sacred sites in the project vicinity.

We are reaching out to local Native American representatives and tribes to facilitate consultation on behalf of the DMV as part of the AB 52 consultation process with a request for any information relating to Native American resources in the vicinity of the proposed project. Any information you provide will remain confidential and be used for planning purposes for this project only. If you are

not comfortable describing the specific resource, we can document it as an “environmentally sensitive area.”

You may respond by mail, e-mail, telephone, or in person. You may also visit our office to review our research files. We expect your response within 14 days of receiving this letter. If you have any questions or comments, you can reach me by telephone at (760) 334-1156, or by e-mail at wburns@dudek.com. Thank you for your assistance with this project.

Sincerely,

A handwritten signature in black ink, appearing to read "William Burns", is written over a horizontal line.

William Burns, MSc., RPA

Archaeologist

DUDEK

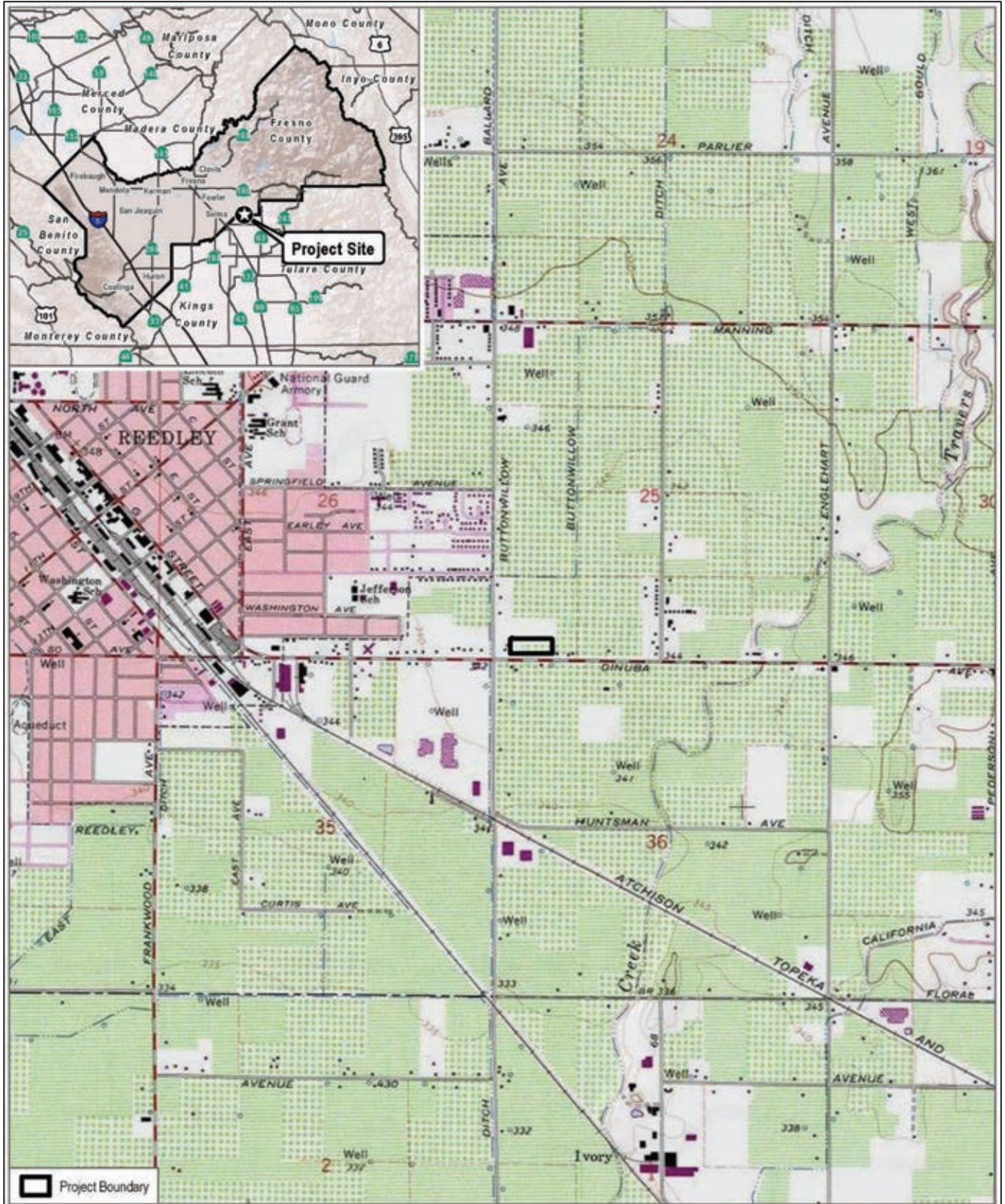
1630 San Pablo Avenue, Suite 300

Oakland, California 94612

T: 760.334.1156

wburns@dudek.com

Attachment: Figures 1 and 2. Project Location Maps



SOURCE: USGS 7.5-Minute Series Reedley Quadrangle



FIGURE 1
Project Location
 Reedley DMV



SOURCE: Fresno County 2018, Bing Maps 2019



FIGURE 2
Aerial Map
 Reedley DMV



TABLE MOUNTAIN RANCHERIA

TRIBAL GOVERNMENT OFFICE

CERTIFIED 7522 9265

May 30, 2019

Leanne Walker-Grant
Tribal Chairperson

Beverly J. Hunter
Tribal Vice-Chairperson

Craig Martinez
Tribal Secretary/Treasurer

Matthew W. Jones
Tribal Council Member

Richard L. Jones
Tribal Council Member

William Burns, MSc., RPA, Archaeologist
Dudek
1630 San Pablo Avenue, Suite 300
Oakland, Ca. 94612


RE: Department of Motor Vehicle Reedley Field Office Replacement Project

Dear: William Burns

This is in response to your letter dated, March 15, 2019, regarding, Department of Motor Vehicle Reedley Field Office Replacement Project. Thank you for notifying us of the potential development and the request for consultation.

We decline participation at this time but would appreciate being notified in the unlikely event that cultural resources are identified.

Sincerely,


Robert Pennell
Tribal Cultural Resources Director
rpennell@tmr.org
559.325.0351

23736
Sky Harbour Road
Post Office
Box 410
Friant
California
93626
(559) 822-2587
Fax
(559) 822-2693

APPENDIX C
Museum Records Search Results

Natural History Museum
of Los Angeles County
900 Exposition Boulevard
Los Angeles, CA 90007

tel 213.763.DINO
www.nhm.org



Vertebrate Paleontology Section
Telephone: (213) 763-3325

e-mail: smcleod@nhm.org

1 February 2019

Dudek
605 Third Street
Encinitas, CA 92024

Attn: Sarah Siren, Senior Paleontologist

re: Vertebrate Paleontology Records Check for paleontological resources for the proposed DMV Project, Dudek Project # 11574-1, in the City of Reedley, Fresno County, project area

Dear Sarah:

I have conducted a thorough search of our paleontology collection records for the locality and specimen data for the proposed DMV Project, Dudek Project # 11574-1, in the City of Reedley, Fresno County, project area as outlined on the portion of the Reedley USGS topographic quadrangle map that you sent to me via e-mail on 18 January 2019. We do not have any vertebrate fossil localities that lie directly within the proposed project area, but we do have fossil localities from the same or similar sedimentary deposits as occur at in the proposed project area, albeit at some distance.

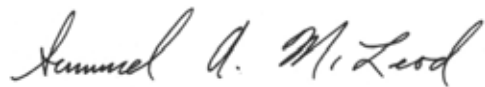
From the level of geologic mapping available to me, it appears that beneath the uppermost layers of soil, the entire proposed project area has surficial deposits of the late Pleistocene Riverbank Formation, derived broadly as alluvial fan deposits from the Sierra Nevada Mountains to the east via the Kings River that currently flows just to the west or possibly from Travers Creek that currently flows immediately to the east. We do not have any vertebrate fossil localities specifically designated as coming from the Riverbank Formation, but our closest vertebrate fossil locality from these or similar deposits is LACM 7254, quite to the northwest of the proposed project area on the south side of Ash Slough northeast of Chowchilla, that produced a fossil specimen of elephantoid, Proboscidea. A little further, but to the southeast of the

proposed project area east of Terra Bella southeast of Visalia, our locality LACM 4087 produced a fossil specimen of mammoth, *Mammuthus jeffersoni*, from older Quaternary deposits.

Shallow excavations in the Quaternary alluvial basin deposits in the proposed project area are unlikely to encounter significant vertebrate fossil remains. Deeper excavations that extend down into older sedimentary deposits, however, may well uncover significant vertebrate fossils. Any substantial excavations in the proposed project area, therefore, should be monitored closely to quickly and professionally collect any specimens without impeding development. Also, sediment samples should be collected and processed to determine the small fossil potential in the proposed project area. Any fossils recovered during mitigation should be deposited in an accredited and permanent scientific institution for the benefit of current and future generations.

This records search covers only the vertebrate paleontology records of the Natural History Museum of Los Angeles County. It is not intended to be a thorough paleontological survey of the proposed project area covering other institutional records, a literature survey, or any potential on-site survey.

Sincerely,

A handwritten signature in cursive script that reads "Samuel A. McLeod".

Samuel A. McLeod, Ph.D.
Vertebrate Paleontology

enclosure: invoice