

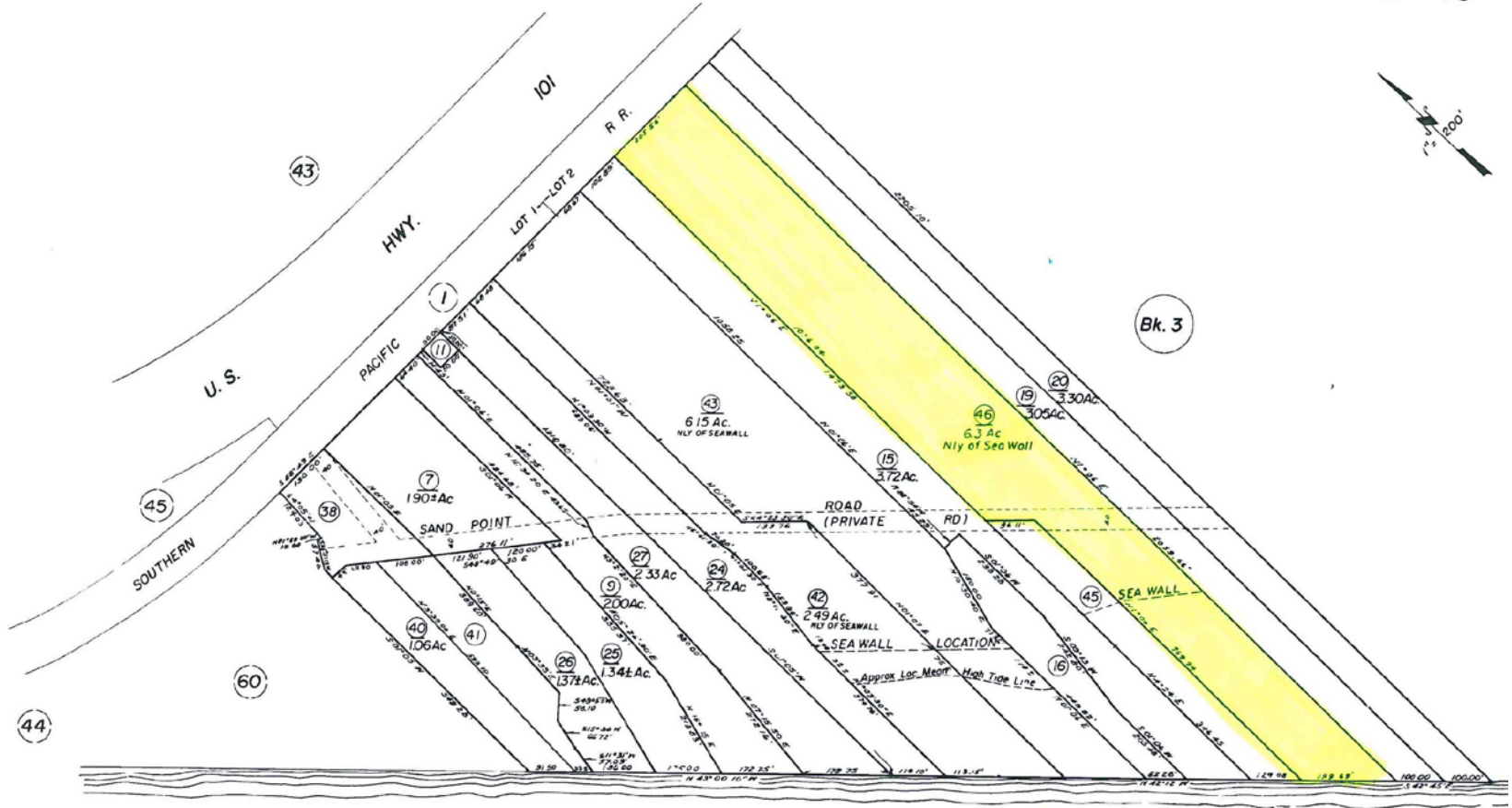


---

711 Sand Point Road

Rear Elevation

# Visual Resources



PACIFIC

OCEAN

NOTE- RECORD TITLE ALONG SHORE OF  
 PACIFIC OCEAN SHALL BE CONSTRUED  
 TO REACH MEAN HIGH WATER  
 BOARD OF SUPERVISORS MINUTES 9/2/33, BK 3, PG 390

Assessor's Map Bk. 5 - Pg. 46

711 Sand Point Road

APN: 005-460-046

# Parcel Map





711 Sand Point Road

# Neighborhood Context

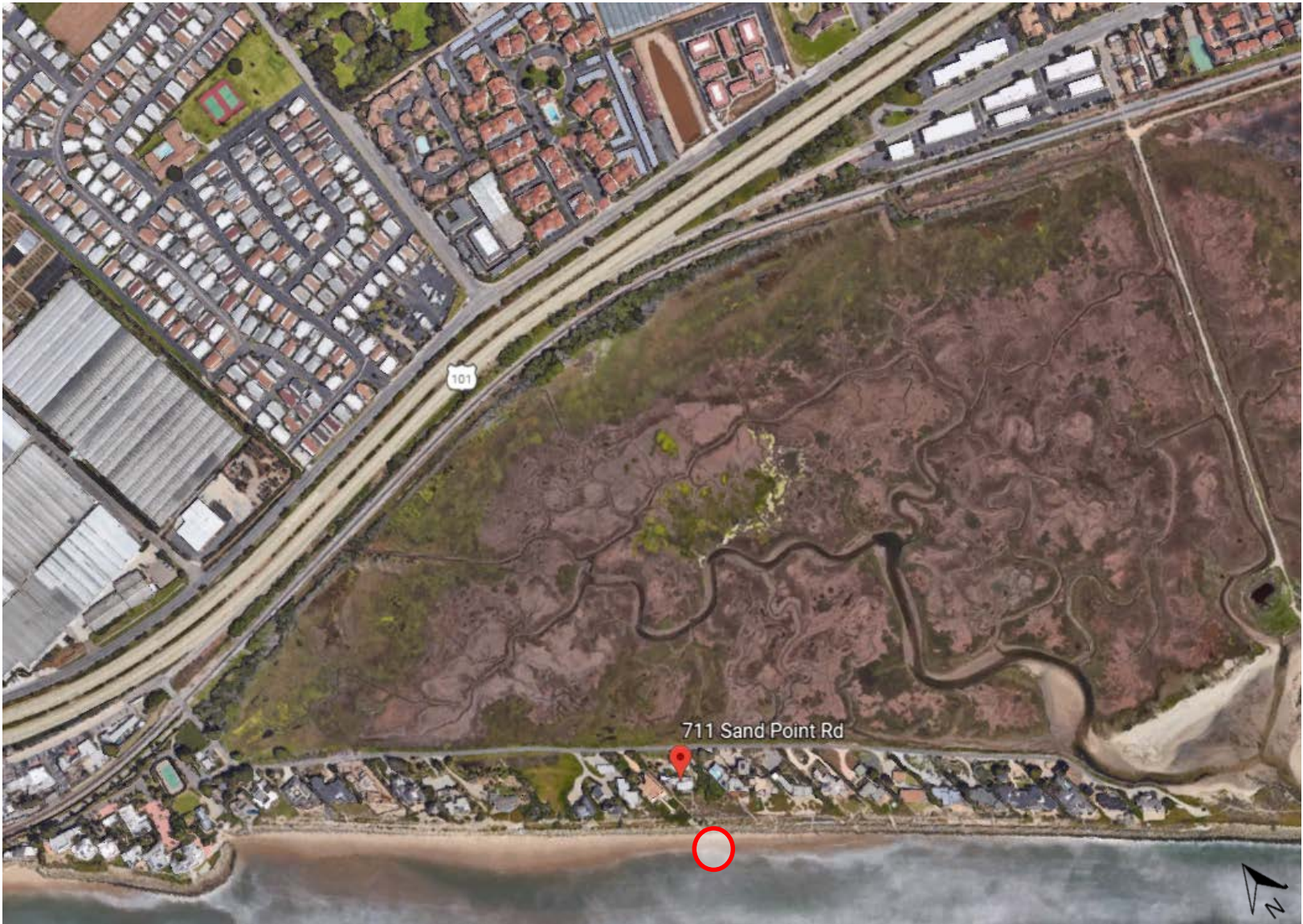




711 Sand Point Road

# Neighborhood Context





Views from the beach

# Photo Key





---

711 Sand Point Road

View from the beach looking North





---

711 Sand Point Road

Zoomed view from the beach looking North



---

711 Sand Point Road

View from the beach looking North





711 Sand Point Road

— Limited Visibility

# Photo Key

## View From Public Roads





711 Sand Point Road

View from Hwy 101 N entrance

# Visual Resources #1

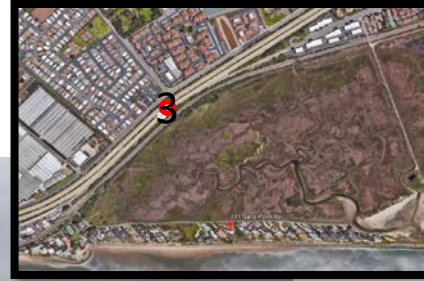




711 Sand Point Road  
View from Hwy 101

## Visual Resources #2





711 Sand Point Road  
View from Hwy 101 between  
Carpinteria Ave. & Santa Claus Ln.

## Visual Resources #3





711 Sand Point Road  
View from Carpinteria Ave.  
Exit from Hwy 101 N

## Visual Resources #4



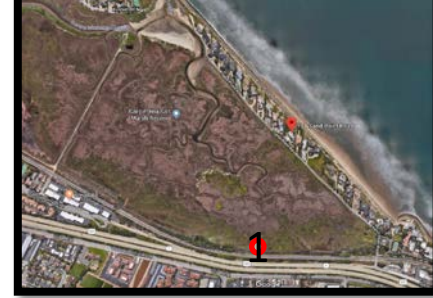


711 Sand Point Road

— Limited Visibility

# Photo Key Proposed Bicycle Path

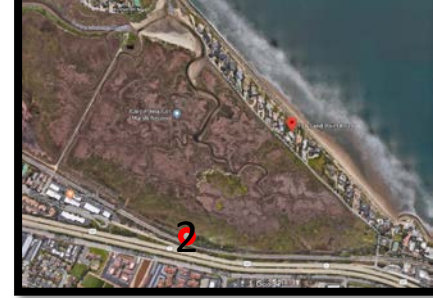




711 Sand Point Road  
View from Amtrak Surfrider  
& new bicycle path

# Visual Resources #1



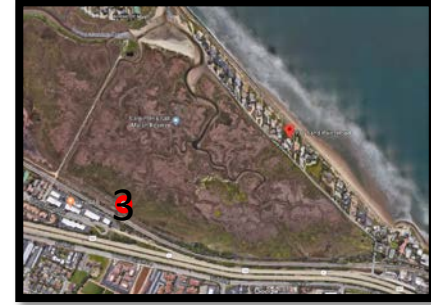


711 Sand Point Road

View from Amtrak Surfrider

& new bicycle path

## Visual Resources #2



711 Sand Point Road  
View from Amtrak Surfrider  
& new bicycle path

## Visual Resources #3





711 Sand Point Road

View from Sandy Cove Rd.

## Visual Resources #4