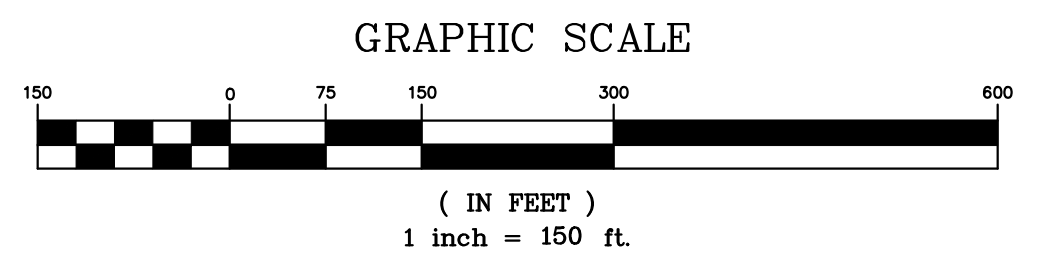
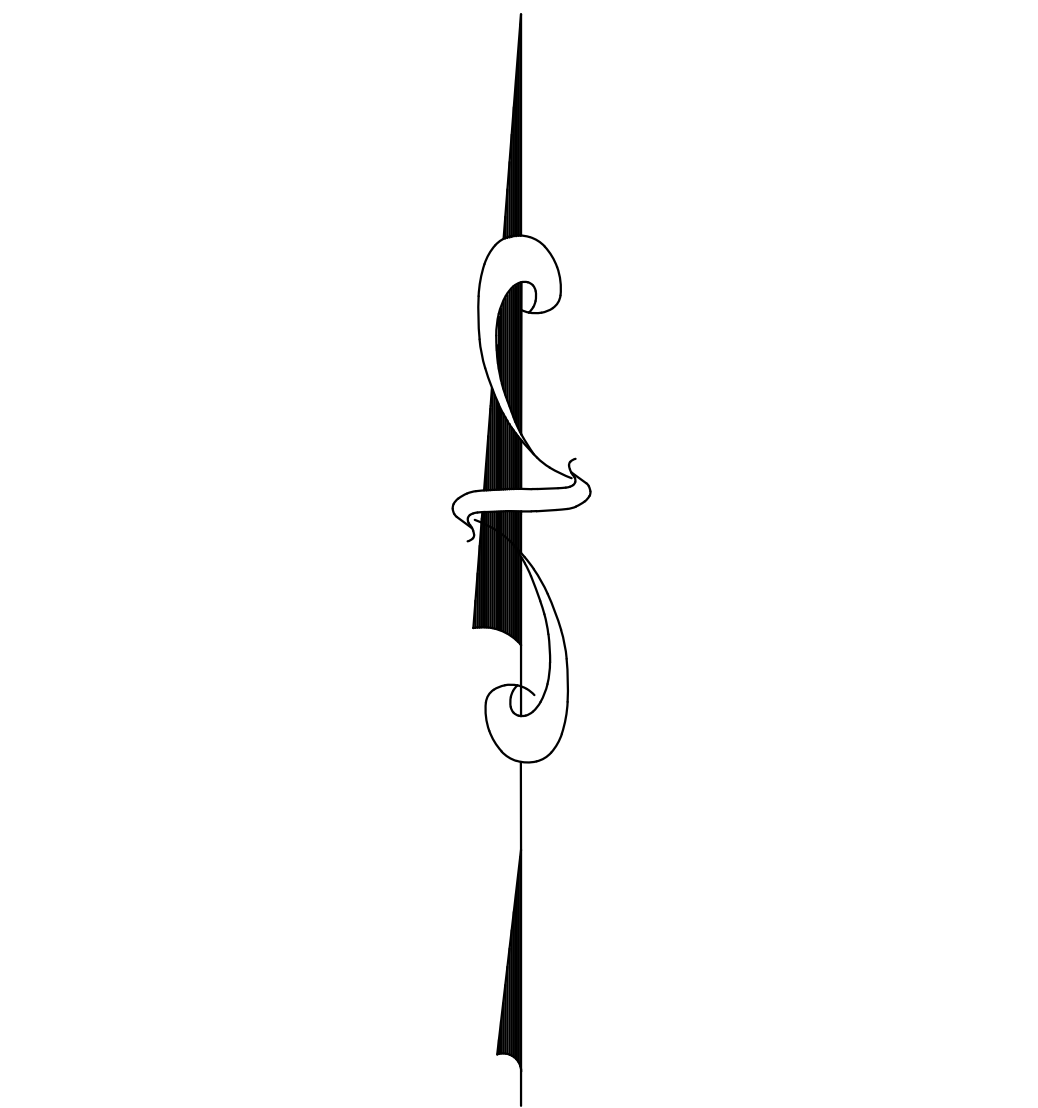
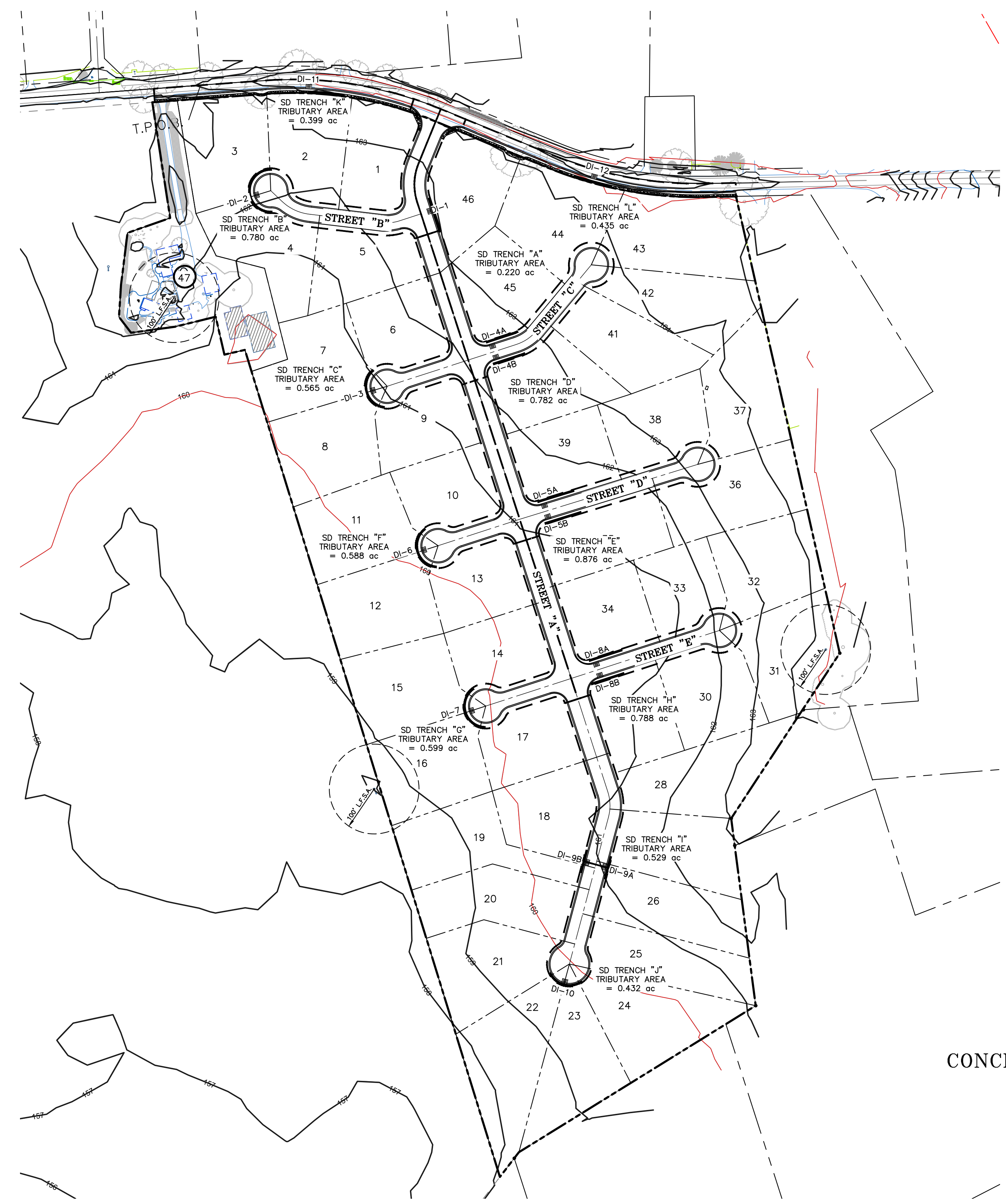


**STORM DRAIN LEACH TRENCH
TYPICAL SECTION**

NTS

NOTES:

- 1.) INSTALL APPROXIMATELY 1,410 FEET OF STORM DRAIN LEACH TRENCH BELOW THE SIDEWALK ALONG THE SUBDIVISION STREET RIGHT OF WAY TO COLLECT AND PERCOLATE STORM WATER RUNOFF FROM THE SUBDIVISION IMPROVEMENTS.
- 2.) INCREASED RUNOFF FROM THE DEVELOPMENT OF THE LOTS WILL BE COLLECTED AND PERCOLATED USING STORM DRAIN LEACH TRENCHES ON EACH INDIVIDUAL LOT.



- LEGEND:**
- PROPOSED STORM DRAIN INLET
 - PROPOSED FLOW DIRECTION OF SURFACE RUNOFF
 - PROPOSED TRIBUTARY AREA BOUNDARY

**CONCEPTUAL DRAINAGE PLAN, WELL LOCATION
AND LEACH FIELD LOCATION MAP
CREEKSIDE ESTATES
TENTATIVE SUBDIVISION MAP**

FOR
MORRIS KEENEY
BEING ALL OF LOT "A" AS DESCRIBED IN RSN 2017-0037282
BUTTE COUNTY
STATE OF CALIFORNIA

PREPARED BY:
W GILBERT ENGINEERING
140 YELLOWSTONE DRIVE, SUITE 110
CHICO, CA 95973
(530) 809-1315