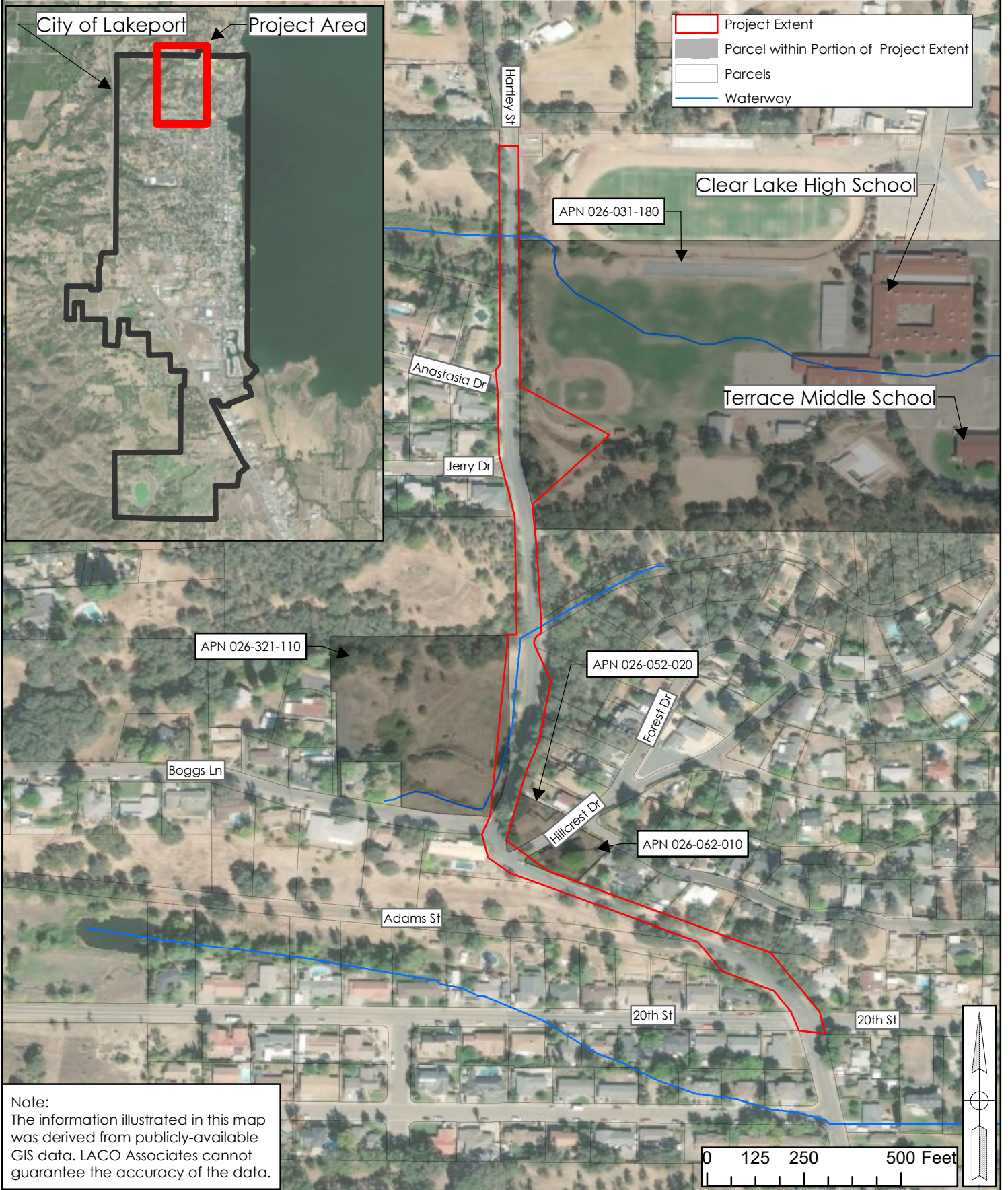


PROJECT	Hartley Street Pedestrian Improvement Project	BY	MCH/VSD
CLIENT	City of Lakeport	CHECK	MMM
LOCATION	Hartley Street (County Road #408)	DATE	7/22/2019
Location Map			

FIGURE	1
JOB NO.	7184.04

REUSE OF DOCUMENTS: This document and the ideas and design incorporated herein, as an instrument of professional service, is the property of LACO Associates and shall not be reused in whole or part for any other project without LACO Associates express written authorization.



Note:
The information illustrated in this map was derived from publicly-available GIS data. LACO Associates cannot guarantee the accuracy of the data.