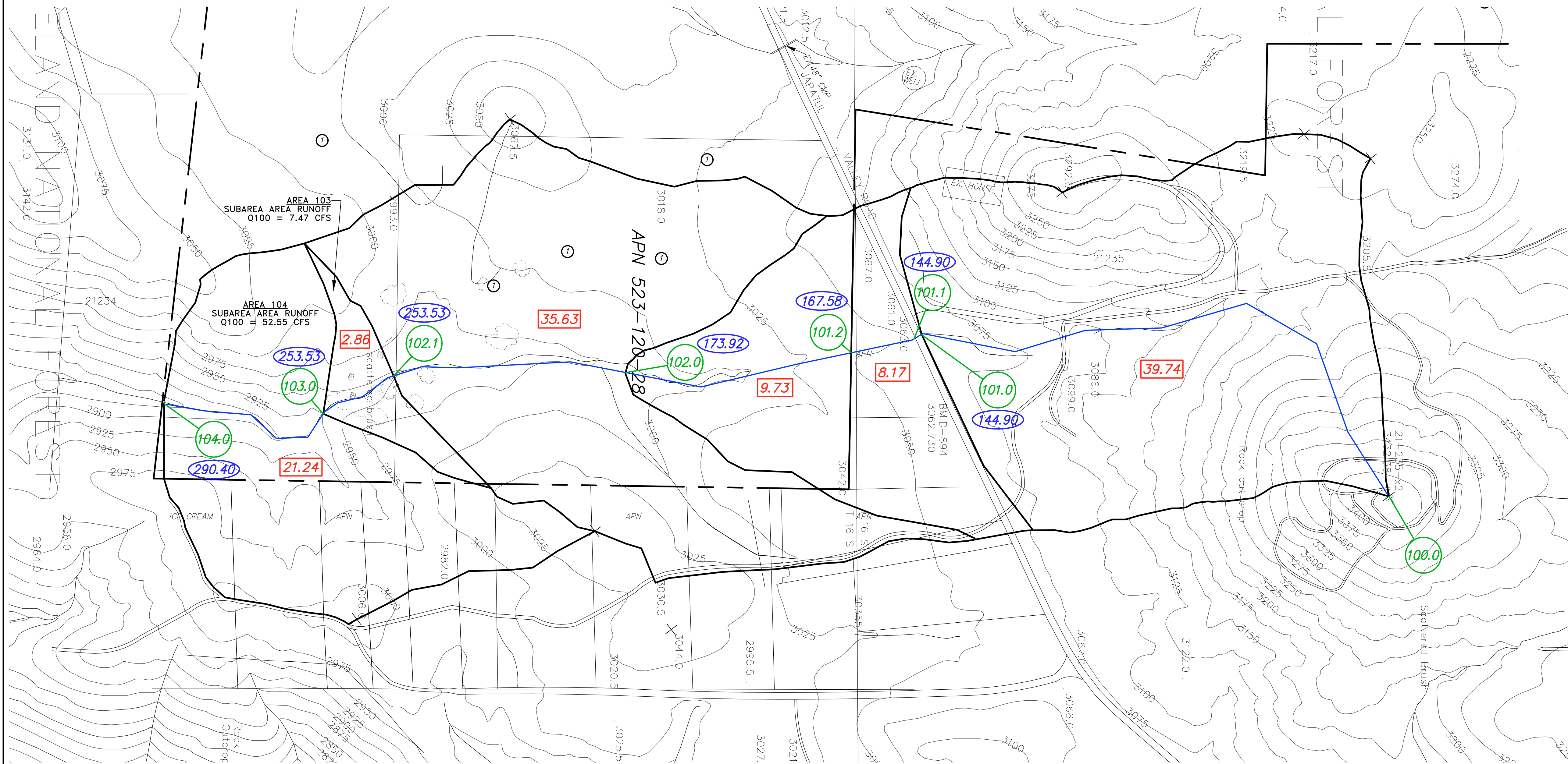


HYDROLOGY – EXISTING CONDITIONS



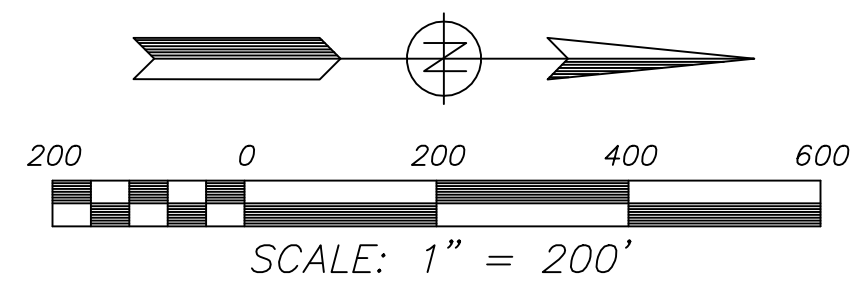
LEGEND

EXIST. CONTOUR	— 3150 —
PROPERTY LINE	— P/L —
WATERCOURSE ROUTE	— (Blue line) —
Q100 (CFS)	144.90
NODE NUMBER	100.0
DRAINAGE AREA (ACRES)	39.74

ONSITE STORM WATER RUNOFF

NODE 104.00 --- Q100 = 290.40 CFS
 -NODE 101.20 --- Q100 = 167.58 CFS

ONSITE RUNOFF INCREASE = 122.82 CFS



PREPARED BY:
 NAME: **CEA ENGINEERING**
 ADDRESS: 8369 VICKERS ST., STE. C
 SAN DIEGO, CA. 92111
 PHONE NO. (858) 277-0441
 PROJECT ADDRESS:
 23137 JAPATUL VALLEY RD.
 ALPINE, CA. 92110
 PROJECT NAME:
 JAPATUL DESILT BASIN

REVISION 1: _____
 REVISION 2: _____
 REVISION 3: _____
 REVISION 4: _____
 REVISION 5: _____
 REVISION 6: _____
 REVISION 7: _____
 REVISION 8: _____
 REVISION 9: _____
 REVISION 10: _____
 ORIG. DATE: 11-13-17
 SHEET 1 OF 2

CEA
 CIVIL ENGINEERING PLANNING LAND SURVEYING
 8369 VICKERS STREET, SUITE C, SAN DIEGO, CALIFORNIA 92111
 PHONE: (858) 277-0441
COASTAL ENGINEERING ASSOCIATES

SHEET TITLE:
HYDROLOGY - EXISTING