



**Notice to Intent to Adopt a Mitigated Negative Declaration
for the Benedict Reservoir and Armstrong Booster Station Project
(District Project No. C195057)**

NOTICE IS HEREBY GIVEN that the Jurupa Community Services District (hereinafter "JCSD") has completed an Initial Study for the Benedict Reservoir and Armstrong Booster Station Project (District Project No. C195057 (hereinafter "the Project"), located in the city of Jurupa Valley, in Riverside County. The Initial Study has been prepared in accordance with the California Environmental Quality Act (CEQA) to assess the potential for any significant environmental effects associated with implementation of the proposed Project. Based on the analysis in the Initial Study, it has been determined that all Project-related environmental impacts will be reduced to a level that is less than significant with the incorporation of mitigation measures. Accordingly, a Mitigated Negative Declaration will meet the requirements of CEQA.

The proposed Project is generally located north of State Route 60 (SR-60), west of SR-91, west of Interstate 15 (I-15), and south of I-10, in the City of Jurupa Valley. (Refer to Figure 1 – Regional Map). Specifically, the proposed Benedict Reservoir is located at the existing reservoir site in the Jurupa Mountains and the proposed Armstrong Booster Station is located on the southeast corner of Armstrong Road and Karen Lane as shown on Figure 2 – Project Location.

The construction and operation of a new 1.1 million gallon (MG) potable water storage reservoir, associated appurtenances, realignment of the access road, and the demolition of the existing 0.21 MG potable water storage reservoir constitutes the Benedict Reservoir portion of the Project. The construction and operation of a new 550 GPM booster pump constitutes the Armstrong Booster Station portion of the Project. The proposed Project will accomplish two things: increase storage capacity at the existing Benedict Reservoir site to a target capacity of 2.1 MG (1.1 MG from the new reservoir and 1.0 MG from the remaining reservoir) and increase the pumping capacity as well as the system reliability and redundancy at the Armstrong Booster Station through the addition of a new pump with a future target pumping capacity of 1,237 GMP.

Pursuant to *CEQA Guidelines* Section 15087(c)(6), no hazardous material waste sites are located within the Project area as reviewed by this Initial Study Mitigated Negative Declaration.

Copies of the Initial Study and the proposed Mitigated Negative Declaration are available for public review at the JCSD's office located at 11201 Harrel Street, Jurupa Valley, California 91752 and on JCSD's website at: <https://www.jcsd.us>. All documents referenced in the Initial Study are available for public review at the location identified in the Initial Study.

In accordance with Section 15072(a) of the State CEQA Guidelines, this Public Notice is to officially notify the general public, public agencies, and landowners that a 30-day public review period will begin on August 15, 2019. Any comments on the proposed Initial Study and Mitigated Negative Declaration or requests for information should be sent to:

Jurupa Community Services District
Attn: Eddie Rhee, P.E.
Engineering Manager
11201 Harrel Street
Jurupa Valley, CA 91752
ERhee@jcsd.us

Written comments must be received at the above address **by September 13, 2019**. Any written comments received will be forwarded to the JCSD Board of Directors and will be considered before the Mitigated Negative Declaration is approved for adoption. A public hearing of the JCSD Board of Directors to take action on the Initial Study and Mitigated Negative Declaration will be held at 7:00 p.m. on November 12, 2019, at the JCSD Boardroom located at 11201 Harrel Street, Jurupa Valley, CA 91752.

Questions or request for electronic copies of the Initial Study and Mitigated Negative Declaration should be directed to Eddie Rhee at the address provided above, by phone at (951) 685-7434, or by e-mail at ERhee@jcsd.us.

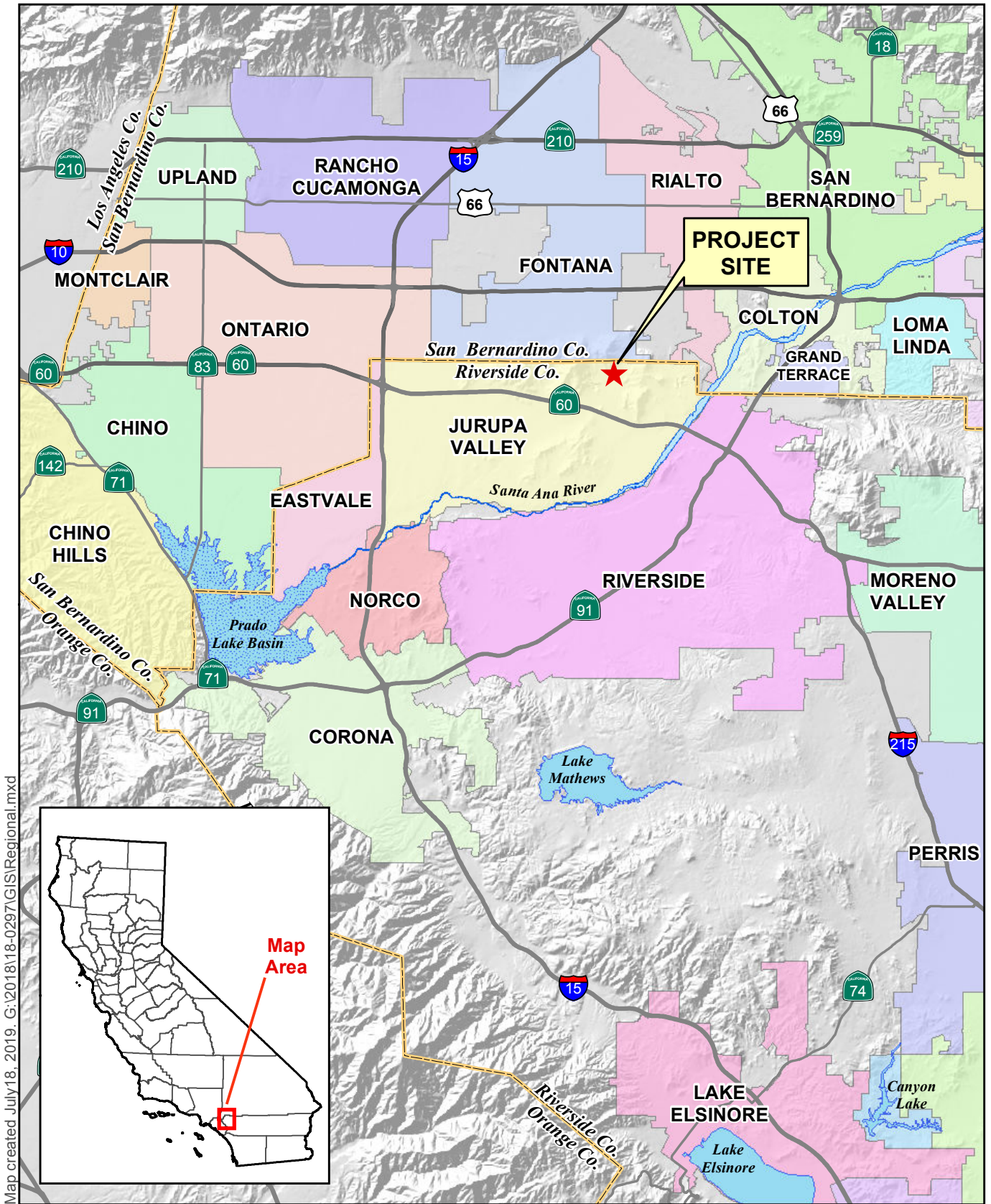
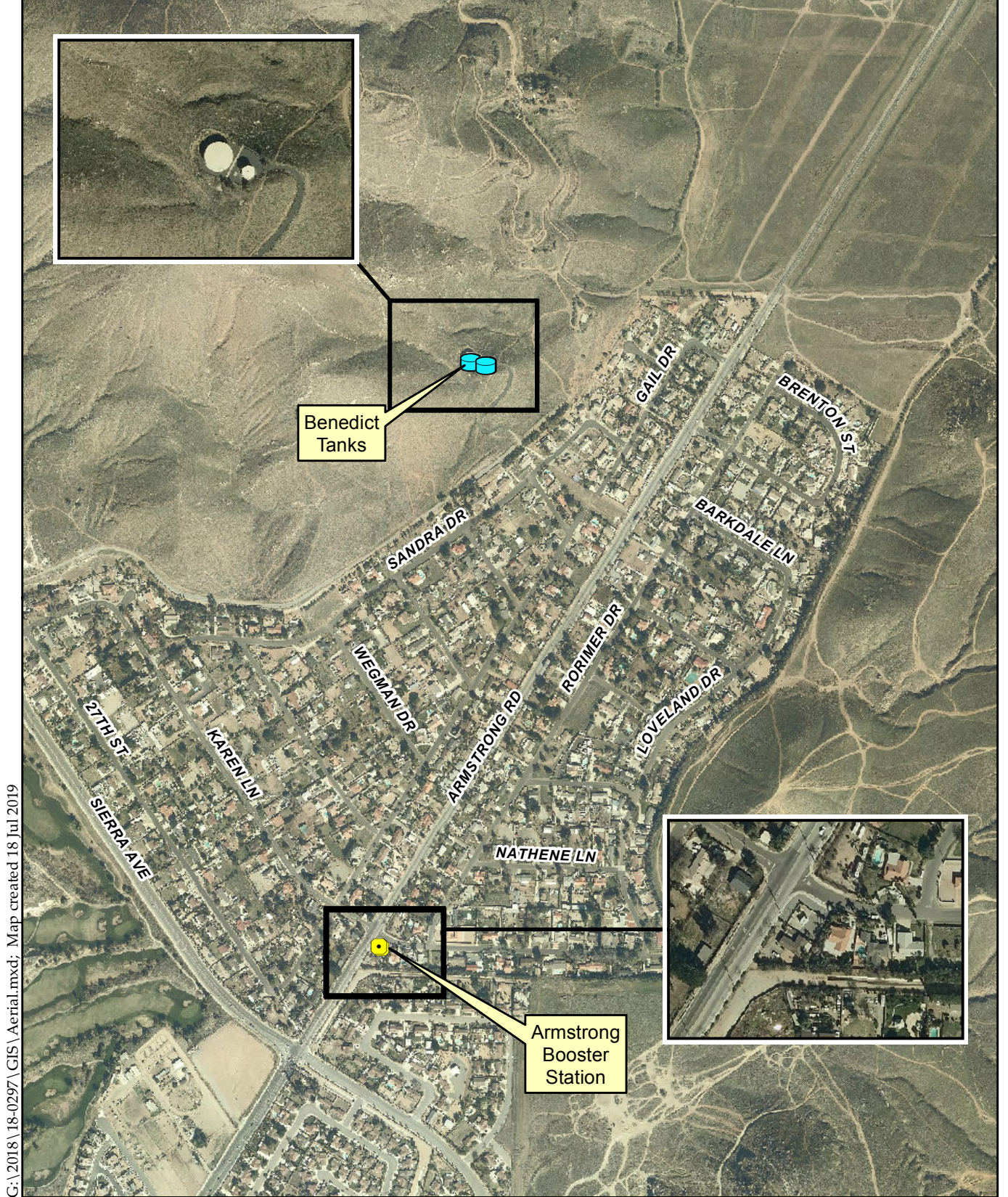


Figure 1 – Regional Map
 Benedict Reservoir and Armstrong Booster Station



0 2 4 6 Miles



G:\2018\18-0297\GIS\Aerial.mxd; Map created 18 Jul 2019

Sources: Riverside Co. GIS, 2019;
San Bernardino Co. GIMS, 2018 (imagery).

Figure 2 - Project Location

Benedict Reservoir and Armstrong Booster Station



0 1,000 2,000 Feet