

# **Phase I Cultural Resource Assessment for the Duke Perry & Barrett Project, City of Perris, Riverside County, California**

Andrew D. Miller

Prepared By



**Applied EarthWorks, Inc.**  
3550 East Florida Avenue, Suite H  
Hemet, CA 92544-4937

Prepared For  
**Albert A. Webb Associates**  
3788 McCray Street  
Riverside, CA 92506

May 2019

Draft

*USGS 7.5' Topographic Quadrangle: Perris, CA*  
*Level of Investigation: CEQA Phase I*  
*Key Words: Riverside County; CEQA; 7.25 acres*

## MANAGEMENT SUMMARY

Duke Realty (Duke) proposes the Duke Perry and Barrett (Project), which includes construction of an industrial warehouse, a commercial/industrial trailer parking lot, and one detention basin. The Project area covers approximately 7.25 acres located within Assessor's Parcel Numbers (APNs) 302-060-011, 026, -030, -031 on the southeast corner of Perry Street and Barrett Avenue in the City of Perris, Riverside County, California. The Project also includes a potential signalization at the intersection of Perry Street and Indian Avenue and off-site drainage connections. Under contract to Albert A. Webb Associates (WEBB), Applied EarthWorks, Inc. (Æ) conducted a Phase I cultural resource investigation of the Project in accordance with the California Environmental Quality Act (CEQA). The City of Perris is the Lead Agency for compliance with CEQA.

This report summarizes the methods and results of the Phase I cultural resource investigation of the Project area. Æ's assessment included a records search and literature review, communication with Native American tribal representatives, and an archaeological survey of the Project area. The purpose of the investigation was to determine the potential for the proposed Project to impact historical resources eligible or listed on the California Register of Historical Resources (CRHR).

The literature and records search at the Eastern Information Center (EIC) of the California Historical Resources Information System indicated 15 cultural resources have been documented within a 1-mile-wide radius of the Project area. None of these previously identified cultural resources are located within the Project area.

As part of the cultural resource investigation, Æ requested a search of the Sacred Lands File (SLF) from the Native American Heritage Commission (NAHC). Results of the SLF search indicate no known Native American cultural resources within the Project area. Native American individuals and organizations were contacted to elicit information on Native American resources within the Project area. Of the 11 groups and/or individuals contacted, responses have been received from the Santa Rosa Band of Cahuilla Indians, the Juaneño Band of Mission Indians-Acjachemen Nation, and the Cahuilla Band of Indians.

Æ Archaeologist Evan Mills completed an archeological survey of the Project area on October 31, 2018. A supplemental survey of off-site improvements was conducted by Mr. Mills on February 7, 2019. The Phase I and supplemental surveys indicated no cultural resources are present within the Project area or off-site improvements. Moreover, the terrain throughout the entire Project area and off-site improvement areas have been disturbed by previous agricultural activity and adjacent commercial developments. Consequently, there is little to no potential for the Project area to contain intact and significant buried cultural deposits. No further cultural resource management of the Project area is recommended.

Field notes documenting the current investigation are on file at Æ's Hemet office. A copy of this report also will be placed on file at the EIC.

# CONTENTS

<b>1</b>	<b>INTRODUCTION.....</b>	<b>1</b>
1.1	PROJECT LOCATION AND DESCRIPTION.....	1
1.2	REGULATORY CONTEXT.....	4
1.2.1	State Laws and Regulations.....	4
1.2.2	Local Laws and Regulations.....	4
1.3	REPORT ORGANIZATION.....	5
<b>2</b>	<b>SETTING.....</b>	<b>6</b>
2.1	ENVIRONMENTAL SETTING.....	6
2.2	PREHISTORIC SETTING.....	7
2.2.1	Early Archaic Period (ca. 9500–7000 B.P.).....	7
2.2.2	Middle Archaic Period (ca. 7000–4000 B.P.).....	8
2.2.3	Late Archaic Period (ca. 4000–1500 B.P.).....	8
2.2.4	Saratoga Springs Period (ca. 1500–750 B.P.).....	8
2.2.5	Protohistoric Period (ca. 410–180 B.P.).....	9
2.3	ETHNOGRAPHIC SETTING.....	9
2.3.1	The Luiseño Lifeway.....	9
2.4	HISTORICAL SETTING.....	10
2.4.1	California History.....	10
2.4.2	Local History.....	11
2.4.3	Project Specific History.....	13
<b>3</b>	<b>CULTURAL RESOURCE LITERATURE AND RECORDS SEARCH.....</b>	<b>14</b>
<b>4</b>	<b>NATIVE AMERICAN COMMUNICATIONS.....</b>	<b>18</b>
<b>5</b>	<b>CULTURAL RESOURCE SURVEY METHODS AND RESULTS.....</b>	<b>19</b>
5.1	SURVEY METHODS.....	19
5.2	SURVEY RESULTS.....	19
5.3	SUPPLEMENTAL SURVEY.....	21
<b>6</b>	<b>MANAGEMENT RECOMMENDATIONS.....</b>	<b>23</b>
<b>7</b>	<b>REFERENCES.....</b>	<b>24</b>

## APPENDICES

- A Confidential Record Search Results**
- B Native American Communication**

**FIGURES**

Figure 1-1 Project vicinity map ..... 2  
Figure 1-2 Project location map ..... 3  
Figure 5-1 Project area overview from northeast corner, view to the southwest. .... 19  
Figure 5-2 Project area overview from southwest corner, view to the northeast. .... 20  
Figure 5-3 Project area overview from southwest corner, view to the north. .... 20  
Figure 5-4 View of construction debris adjacent to Indian Avenue, view to the southeast. .. 21  
Figure 5-5 View of commercial developments adjacent (north) to Perry Street and Indian Avenue, view to the southeast. .... 22

**TABLES**

Table 3-1 Previous Cultural Resource Studies in the Study Area ..... 14  
Table 3-2 Cultural Resources in the Study Area ..... 17

# 1 INTRODUCTION

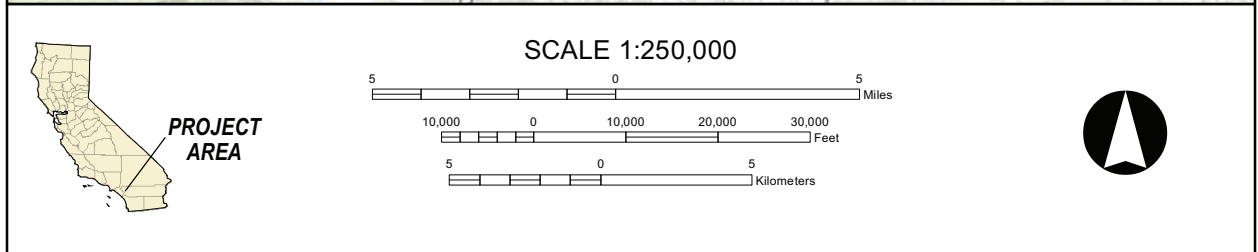
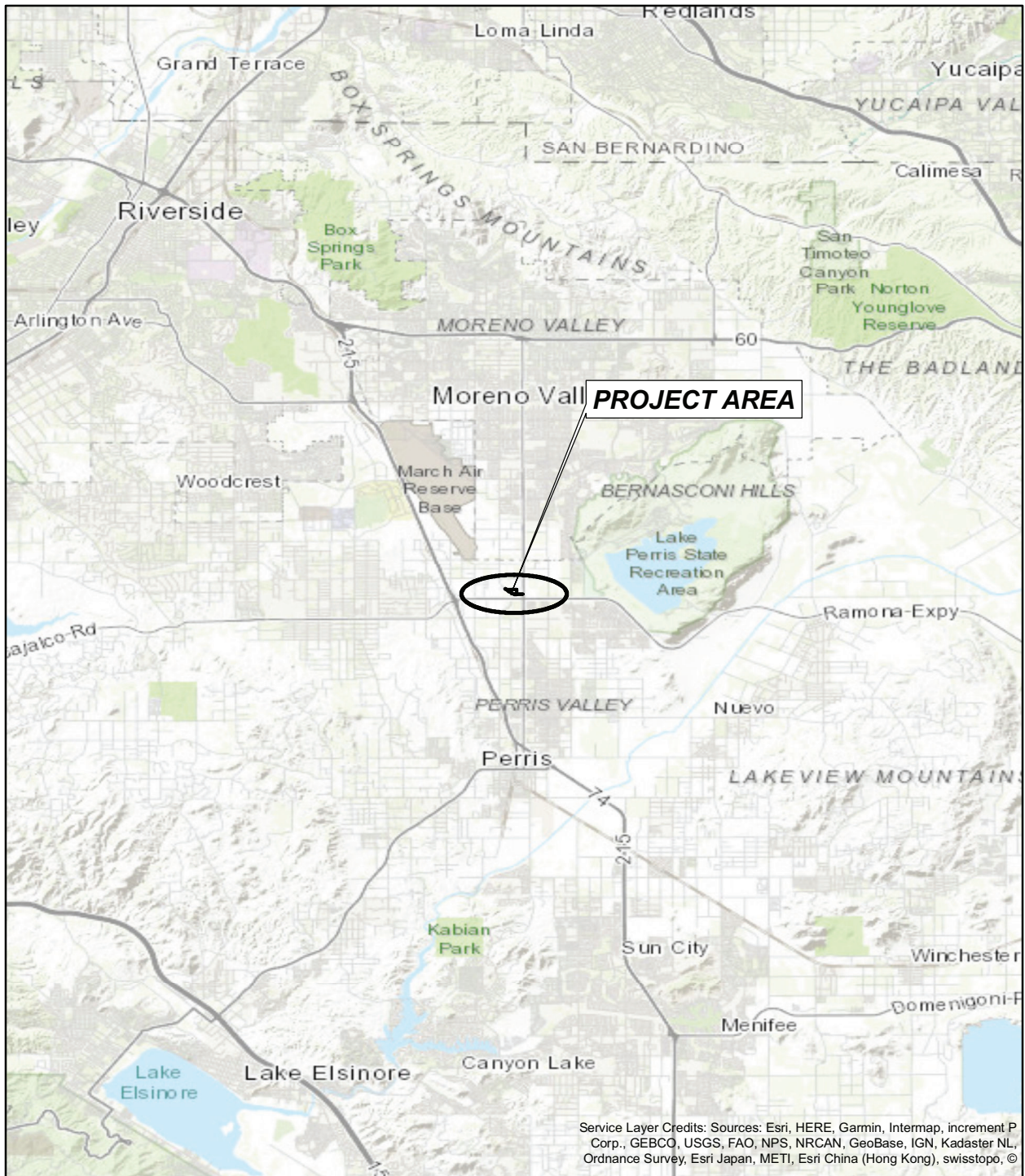
Duke Realty (Duke) is proposing the Duke Perry and Barrett Project (Project) in the City of Perris, Riverside County, California (Figure 1-1). Albert A. Webb Associates as the prime contractor to Duke for environmental compliance services retained Applied EarthWorks, Inc. (Æ) to conduct a Phase I cultural resource investigation of the Project for compliance with the California Environmental Quality Act (CEQA). The City of Perris is the Lead Agency for the purposes of CEQA. Amy L. Ollendorf, Ph.D., M.S., RPA (#12588), served as Æ's principal investigator and was responsible for overall quality control. Æ Associate Archaeologist Joan George, B.S., served as project manager. Fieldwork was conducted by Æ Associate Archaeologist Evan Mills, M.A.

## 1.1 PROJECT LOCATION AND DESCRIPTION

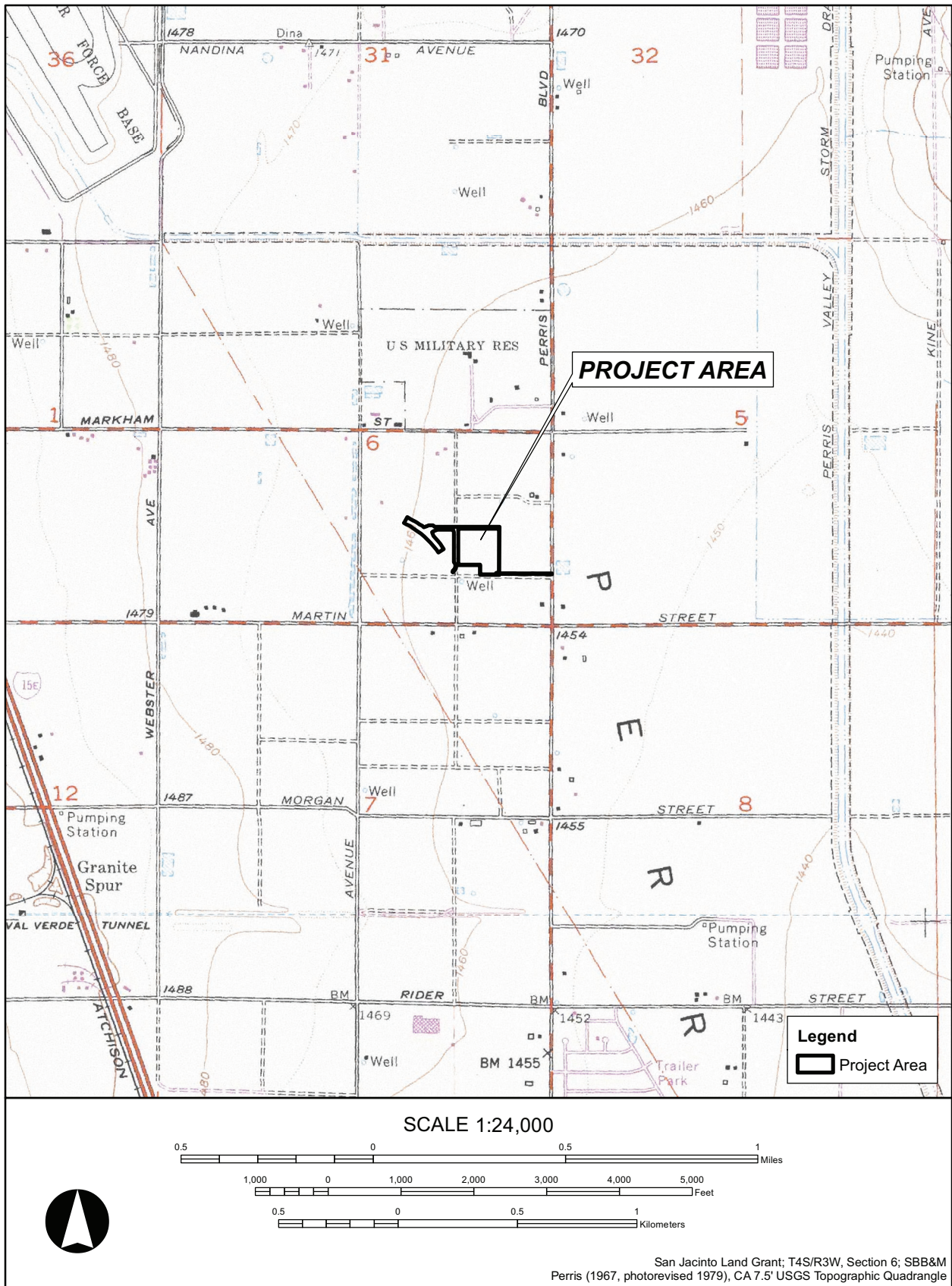
The Project is in the western portion of Riverside County within the Perris Valley (Figure 1-1). Specifically, the Project is located on the southeast corner of Perry Street and Barrett Avenue, north of the Ramona Expressway within Section 6 Township 4 South, Range 3 West as shown on the Perris, California 7.5' U.S. Geological Survey (USGS) topographic quadrangle (Figure 1-2). Elevation ranges from approximately 1,450 to 1,456 feet above mean sea level (amsl).

The Project area covers approximately 7.25 acres of vacant land within Assessor's Parcel Numbers (APNs) 302-060-011, -026, -030, -031. Project plans as presently designed include two applications; one for a warehouse and one for a trailer parking lot. The warehouse application includes construction and operation of an approximately 148,297-square foot industrial warehouse that includes 3,000 square feet of office space and 3,000 square feet of mezzanine parking. The Project also includes a potential 4-way traffic signal at the intersection of Perry Street and Indian Avenue and off-site drainage connections. Off-site drainage connections include approximately 845 linear feet of storm drain line to connect the detention basin to Lateral E-11, located outside of the Project in Perris Boulevard.

The trailer parking lot application includes approximately 200 commercial/industrial trailer parking stalls and one detention basin. The basin is located within the southeasterly corner of the Project and will collect the runoff from the whole Project. Additional improvements include a curb, gutter, and sidewalk on Perry Street along the Project frontage. Construction will involve mass grading of the Project area and the site will be landscaped to provide approximately 60,887 square feet of landscape. The site will include 14-foot high screen walls on all four sides of the Project site with two truck and vehicle entrances on Perry Street and one truck and vehicle entrance on Barrett Avenue. Maximum depth of ground disturbance will be 6 feet. Final design of the Project includes a net import of 17,900 cubic yards of fill.



**Figure 1-1 Project vicinity map.**



**Figure 1-2 Project location map.**

## **1.2 REGULATORY CONTEXT**

### **1.2.1 State Laws and Regulations**

The Project requires discretionary approval from the City of Perris and is therefore subject to the requirements of CEQA. The CEQA Statute and Guidelines directs lead agencies to determine whether a project will have a significant impact on historical resources. A cultural resource considered “historically significant” is considered a “historical resource,” if it is included in a local register of historical resources or is listed in or determined eligible for listing on the California Register of Historical Resources (CRHR) under any one of the following criteria (Title 14, California Code of Regulations [CCR], § 15064.5):

1. Is associated with events that have made a significant contribution to the broad patterns of California’s history and cultural heritage;
2. Is associated with the lives of persons important in our past;
3. Embodies the distinctive characteristics of a type, period, region, or method of construction, or represents the work of an important creative individual, or possesses high artistic values; or,
4. Has yielded, or may be likely to yield, information important in prehistory or history.

Compliance with CEQA’s cultural resource provisions typically involves several steps. Briefly, archival research and field surveys are conducted, and identified cultural resources are inventoried and evaluated in prescribed ways. Prehistoric and historical archaeological sites, as well as standing structures, buildings, and objects deemed historically significant, must be considered in project planning and development.

A project with an effect that may cause a substantial adverse change in the significance of a historical resource is a project that may have a significant effect on the environment (14 CCR § 15064.5[b]) and the lead agency is responsible for identifying potentially feasible measures to mitigate significant adverse changes in the significance of a historical resource (14 CCR § 15064.5[b]4).

### **1.2.2 Local Laws and Regulations**

The City of Perris General Plan 2030 was approved in 2005 and addresses the seven state-mandated elements of general plans (land use, housing, circulation, open space, conservation, noise, and safety) (City of Perris 2004). The General Plan is a 30-year guide for local government decision on growth, capital investment, and physical development in the City of Perris. It guides future development plans and gives direction on how to make the future happen.

Much of the geographic area of the City of Perris has a medium to high potential to contain significant archaeological resources. The Conservation Element of General Plan 2030 includes the following Implementation Measures appropriate to preventing changes to significant archaeological resources in the City of Perris:



IV.A.2 For all projects subject to CEQA, applicants will be required to submit results of an archaeological records search request through the Eastern Information Center, at the University of California, Riverside.

IV.A.3 Require Phase I Surveys for all projects located in areas that have not previously been surveyed for archaeological or historic resources, or which lie near areas where archaeological and/or historic sites have been recorded.

The Project is also within the Perris Valley Commerce Center Specific Plan (PVCCSP) boundary. However, the PVCCSP does not provide specific guidelines or objectives regarding cultural resources; rather, it incorporates the above measures from the Conservation Element of the City of Perris General Plan.

### **1.3 REPORT ORGANIZATION**

This report documents the results of a cultural resource investigation of the proposed Project area. Chapter 1 has described the Project and its location, defined the scope of cultural resource studies, and stated the regulatory context. Chapter 2 summarizes the natural and cultural setting of the Project area and surrounding region. Chapter 3 presents the results of the archaeological literature and records search. Chapter 4 summarizes the Sacred Lands File (SLF) search with the Native American Heritage Commission (NAHC) and Native American communications. The field survey methods and results are discussed in Chapter 5. Cultural resource management recommendations are provided in Chapter 6, and bibliographic references are cited in Chapter 7. Results of the confidential literature and record search are included as Appendix A and the results of the SLF search and correspondence with Native American groups are included in Appendix B.

## 2 SETTING

This chapter describes the prehistoric, ethnographic, and historical cultural setting of the Project to provide a context for understanding the nature and significance of cultural resources identified within the region. Prehistorically, ethnographically, and historically, the nature and distribution of human activities in the region have been affected by such factors as topography and the availability of water and natural resources. Therefore, prior to a discussion of the cultural setting, the environmental setting of the area is summarized below.

### 2.1 ENVIRONMENTAL SETTING

The Project is in western Riverside County within Perris Valley and the greater San Jacinto Valley. This area is underlain by the Southern California Batholith, a massive geological intrusion of granite which is part of the Peninsular Range formed in the late Cretaceous and uplifted in the early Tertiary. This mountain range extends from the San Gabriel Mountains to southern Baja Mexico. The Peninsular Ranges Province in southern California is characterized by three major northwest-trending mountainous regions composed of stable crustal blocks separated by active fault zones, including (from east to west) the San Jacinto Mountains, the Perris Block, and the Santa Ana Mountains (Morton and Miller 2006). The San Jacinto and Elsinore fault zones separate the three regions. The Project is within the Perris Block, which consists of bedrock highlands and isolated hills separated by alluvium-filled valleys.

The San Jacinto River is approximately 5 miles southeast of the Project area. The river's headwaters are in the San Jacinto Mountains. The river flows northwesterly through the San Jacinto Valley and then west and southwest until it empties into Lake Elsinore, a sink in the Elsinore fault zone. Levees built between 1919 and 1939 altered the course of the river, shifting it as much as a mile south of its historical course. Prior to historical hydrological modifications, the San Jacinto River flowed perennially only in the eastern portion of the valley. During the wet season, the river flowed farther than today and collected in the northern part of the valley (about 8 kilometers [5 miles]) northwest of the town of San Jacinto) in an elongate depression forming a shallow, ephemeral lake now known as Mystic Lake (Morton 1977; Whitney 1982). Overflow from the lake drained to the southwest, eventually reaching Lake Elsinore. Because the lake existed before 1895, which predates groundwater withdrawal in the valley, Morton (1977) inferred the depression is of tectonic origin.

Soils in the Project area as mapped by the U.S. Department of Agriculture (USDA) Natural Resources Conservation Service (NRCS) consist of two series. Most of the Project area (62%) is mapped in Exeter loams (Soil Survey Staff 2018a) in alluvium derived mainly from granitic sources. Exeter soils are distributed on flat to gently sloping (0 to 9 percent grades) alluvial fans and stream terraces (Soil Survey Staff 2018b). The typical pedon for this soil series as described in Tulare County includes an indurated duripan in the basal portion of the B horizon (Bqm), above the topmost C horizon, which occurs anywhere from 20 to 40 inches depth (Soil Survey Staff 2018b). It should be noted the duripan does not soften or slake after prolonged soaking in

water and can be chipped with hand tools with extreme difficulty (Soil Survey Staff 2018b). Consequently, where exposed and easily accessed, the duripan may have been utilized expediently by Native Americans as a poor sedimentary substitute for more prized silicate raw materials for stone tools. The remaining 38 percent of the Project area is mapped as Pachappa fine sandy loams, which developed from moderately coarse-textured alluvium on gently sloping alluvial fans as well as floodplains (Soil Survey Staff 2018a). The typical pedon for this soil series as described in Madera County consists of a 14-inch-thick topsoil (Ap horizon) underlain by approximately 30 inches of B horizons over stratified C horizons (Soil Survey Staff 2018c). Both series are in the Alfisol soil order and formed under native forest vegetation. Although ground disturbance for the Project will exceed the thickness of the typical pedon by reaching a maximum depth of 6 feet, neither of the mapped soil series has a buried A (Ab) horizon. Therefore, intact and significant buried cultural deposits are unlikely.

## **2.2 PREHISTORIC SETTING**

The prehistory of inland southern California is less thoroughly understood than in the adjacent desert and coastal regions. This is partially a result of historical circumstances, such as ease of access, the location of universities, and public versus private land ownership, and partly due to the nature of archaeological research in these interior valleys and mountains of southern California (Goldberg and Arnold 1988). In the absence of absolute chronological indicators for inland sites, researchers generally employ typological cross-dating from either coastal or desert sequences, often as the sole means for assigning age to archaeological sites within the interior valleys, including the Project area.

Two large reservoir projects, Perris Reservoir (O’Connell et al. 1974) and Eastside Reservoir Project (ESRP) (Goldberg et al. 2001), generated large data sets to provide a basis for resolving some of these regional problems. It is difficult to extrapolate the geographic extent of the prehistoric cultural patterns discerned from excavations at these two reservoirs, which are 12 miles apart in central western Riverside County. The ESRP is east of the Project, and it is almost certain that prehistoric patterns are similar to those discerned for the ESRP studies.

This discussion of the Project’s prehistoric cultural setting is drawn from the cultural sequence developed for the ESRP. This chronology was based first on artifact cross-dating, and then refined with radiocarbon and obsidian hydration dates (Onken and Horne 2001; Robinson 1998, 2001); however, the ESRP chronology draws heavily on a cultural sequence defined by Warren (1984) for southern California, which is based largely on archaeological work conducted in the Colorado and Mojave deserts. Because Warren’s chronology used period names that suggest links to the Mojave, these were replaced in the ESRP chronology by value neutral terms. Because no sites dating to the Paleoindian Period (ca. 12,000–9500 before present [B.P.]) have been documented within the region, the discussion below begins with the Early Archaic Period.

### **2.2.1 Early Archaic Period (ca. 9500–7000 B.P.)**

During this period, the environment of the interior deserts was more favorable for human occupation than the cismontane valleys of southern California, where the Project is located. Populations in the interior valleys would have been tethered to the few reliable, drought-resistant water sources such as Lake Elsinore, Mystic Lake, and possibly the Cajalco Basin. In general,

small, highly mobile groups traveled widely, utilizing highly portable tool kits to procure and process critical resources, with brief and anticipated intervals of seasonal sedentism near predictable water locations. Due to isolated locations where the conditions for occupation were met, Early Archaic sites are rare compared to later periods of prehistory (Goldberg et al. 2001; Grenda 1997; Horne and McDougall 2008; McDougall 1995).

### **2.2.2 Middle Archaic Period (ca. 7000–4000 B.P.)**

A gradual transition from wet pluvial conditions to arid desert conditions during the Early Holocene marks the transition to the Middle Archaic Period. Middle Archaic sites in southern California include two in the ESRP, one at Lake Elsinore, the Stahl Site in Owens Valley, desert sites in Death Valley, Salt Springs, and in Pinto Basin in Joshua Tree National Park. Middle Archaic sites are associated with the margins of pluvial lakes and with now-extinct springs. Pinto-series projectile points, a type of basally-notched or bifurcate base dart point, are the most distinctive artifact type of this period (Justice 2002). Other artifacts found at Middle Archaic sites include leaf-shaped bifacial knives; split cobble choppers and scrapers; scraper-planes; and small milling slabs and manos. With a few exceptions in the ESRP area and the Stahl Site, most sites of this age are small surface deposits of lithic artifacts, suggestive of temporary and perhaps seasonal occupation by small groups of people.

### **2.2.3 Late Archaic Period (ca. 4000–1500 B.P.)**

The Late Archaic Period was one of cultural intensification coinciding with the Little Pluvial, a period when increased moisture allowed for more extensive occupation of the region. Sedentism likely increased during this period, with large occupation sites located adjacent to permanent water sources such as perennial springs and streams. Projectile points diagnostic of this period include Humboldt, Gypsum, and Elko-series dart points (Warren 1984), though Rose Spring arrow points appeared late within this period in the deserts. The mortar and pestle, used for processing acorns and hard seeds, also first appeared. A warming and drying trend began around 2100 B.P., leading to intensification of use of certain resources (Goldberg et al. 2001).

### **2.2.4 Saratoga Springs Period (ca. 1500–750 B.P.)**

Occupants of the region continued to adapt to the arid environment in the deserts (Warren 1984). Lake Cahuilla likely refilled the Coachella Valley around 1450 B.P. and was the focus of exploitation of fish and wetland resources. Occupation around Lake Perris and other large local water sources declined as these dried, however, and people became tethered to springs (Goldberg et al. 2001). Cultural trends continued from the Late Archaic Period, as Saratoga Springs projectile points, also associated with early use of the bow and arrow, appeared. The sparse assemblages found within the region, however, obscure the timing of local adoption of the bow and arrow (Goldberg et al. 2001). Shoshonean language speakers likely moved into southern California at this time. Brown and Buff Ware pottery first appeared on the lower Colorado River at about 1200 B.P. and started to diffuse across the California deserts by about 1100 B.P. (Moratto 1984). The warmer and drier Medieval Warm Period set in throughout the Southwest by about 1060 B.P. (Stine 1994; Warren 1984) and led to the withdrawal of Native American populations from marginal desert areas.

### **2.2.5 Protohistoric Period (ca. 410–180 B.P.)**

Sedentism intensified during the Protohistoric Period. Increased hunting with bow and arrow and widespread exploitation of acorns, other hard nuts, and berries (indicated by the abundance of mortars and pestles) provided reliable and storable food resources. Reliable food sources likely prompted the establishment of small, completely sedentary villages with resource catchment areas around them (True 1966, 1970). Ceramic technology first appeared in the region around 350 B.P. Cottonwood Triangular points were supplemented by Desert Side-notched points. This period ended in 1769 A.D. when Spanish settlement began in Upper California.

## **2.3 ENTHNOGRAPHIC SETTING**

Based on information passed down from Tribal elders, published academic works in the areas of anthropology, history, and ethnohistory, and through recorded ethnographic and linguistic accounts (cf., Freers and Smith 1994; Kroeber 1925; Strong 1929; Vane 2000), the Project lies within the ancestral cultural territory of the Luiseño. However, the area may also have been occupied by the Cahuilla due to population shifts in the historic era (Bean 1978). Both of these tribes speak a language of the Takic branch of the Shoshonean family, part of the larger Uto-Aztecan language stock.

Luiseño territory in ethnographic times encompassed a stretch of the California coast and included most of the drainage of the San Luis Rey and Santa Margarita rivers. Inland, Luiseño territory extended south from Santiago Peak, including the Elsinore and Temecula valleys, and extended farther south to Mount Palomar and the San Jose Valley, then west to the coast at Agua Hedionda Creek. The coastal territory of the Luiseño extended north to near San Mateo Creek in Orange County (Bean 1978). Elders of the Pechanga Band of Luiseño Indians add that the Temecula/Pechanga people had usage/gathering rights to an area extending from Rawson Canyon on the east to Lake Mathews on the northwest, down Temescal Canyon to Temecula, eastward to Aguanga, and then along the crest of the Cahuilla Range back to Rawson Canyon.

Ethnographically, Cahuilla territory spanned from the summit of the San Bernardino Mountains in the north to Borrego Springs and the Chocolate Mountains in the south, a portion of the Colorado Desert west of Orocopia Mountain to the east, the San Jacinto Plain as far as Riverside, and the eastern slopes of Palomar Mountain to the west (Bean 1978).

### **2.3.1 The Luiseño Lifeway**

The lifeways of the Luiseño, the most likely inhabitants of the area based on current ethnographic data, are described below. This description is derived primarily from Bean (1978) and Bean and Vane (2001) and is also applicable to the Cahuilla lifeway.

Prior to the Mission Period (prior to 1769), the Luiseño and Cahuilla organized themselves in patrilineal clans composed of 3 to 10 lineages, distinctly different, named, and claiming a common genitor, with one lineage recognized as the founding lineage (Bean 1978; Bean and Vane 2001). Clans owned a large territory in which each lineage owned a village site and specific resource areas. Clan lineages cooperated in large communal subsistence activities (including animal drives, hunts, controlled burns) and in performing rituals.

The Luiseño and Cahuilla were, for the most part, hunters, collectors, and harvesters. Clans were apt to own land in valley, foothill, and mountain areas, providing them with the resources of many different ecological niches. Individual lineages or families owned specific resource areas within the clan territory. Although any given village had access to only some of the necessary resources, briskly flourishing systems of trade and exchange gave them access to neighboring and distant resources. Rules that forbade marriage to anyone related within five generations or belonging to the same moiety ensured that everyone had relatives living in many ecozones; this was an important arrangement because relatives were invited to ceremonies where the gift exchanges provided a way for drought-stricken groups to get food in return for treasure goods.

The Luiseño and Cahuilla, like other California Indians, understand the universe in terms of power, which they believed to be sentient and to have will. In their view, power is the principal causative agent for all phenomena. Unusual natural phenomena are viewed as especially sacred, being the repositories of concentrations of power. Mountain tops are held sacred, as are unusual rock formations, springs, and streams. Rock art sites are sacred, having been the sites of ceremonies. Burial and cremation sites are also sacred, as are many other places of residual power. In addition, various birds, but especially eagles, condors, hawks, and other birds of prey and their symbolic representations, are revered as sacred beings of great power and were sometimes killed ritually and mourned in mortuary ceremonies similar to those for human elites. For this reason, bird cremation sites are also sacred.

Because of these strong beliefs, rituals were (and continue to be) a constant factor in the life of every Native American individual. Some rituals were scheduled and routine (e.g., birth, puberty, death, mourning, and the eagle ritual and first rites), while others were sporadic and situationally performed (e.g., deer ceremony, bird dance, enemy songs, and the rain ritual) (Bean and Vane 2001:VII.A-3-10).

## **2.4 HISTORICAL SETTING**

The history of the region provides a context for understanding local settlement from mission lands to the development of the modern urban landscape. It is the basis for the identification of the historic property types constructed during this period, and the evaluation of their significance as historical resources. The following California history is based on discussions in Beedle et al. (2010) and Earle (2006). Relevant historical information for the Project region is based on Brackett (1939), Gunther (1984), Hemet-San Jacinto Genealogical Society (2011), Rawls and Bean (1998), Robinson (1957), and Rolle (1978).

### **2.4.1 California History**

Exploration of the California coast in the sixteenth and seventeenth centuries was the basis for the Spanish claim to the region. In the eighteenth century, Spain recognized that to strengthen its claim, it would have to settle Alta California to preclude encroachment by the Russians and British. Therefore, in the latter half of the eighteenth century Spain and the Franciscan Order founded a series of pueblos (towns), presidios (military camps), and missions (religious centers) along the California coast, beginning at San Diego in 1769.

In 1821, Mexico opened the ports of San Diego and Monterey to foreign trade (Crouch et al. 1982:200). American ships docked at California ports to purchase tallow and hides, known as California banknotes. Americans also settled in California, some of them becoming citizens and owners of large ranchos. Conflicts between the Californios and the central government in Mexico City led to a series of uprisings culminating in the Bear Flag Revolt of June 1846. However, Mexican control of California had effectively ended the year before when the Californios expelled Manuel Micheltorena, the last Mexican governor.

## **2.4.2 Local History**

Pedro Fages, second officer to Captain Portola, is believed to have been the first European to enter the San Jacinto Valley and other portions of Riverside County. In 1772, while en route from San Diego on a search for Spanish army deserters, Fages rode horseback through the place that later became the City of Riverside (Bancroft 1886).

In 1774, Captain Juan Bautista de Anza crossed the San Jacinto Valley with a party of soldiers, Indians, and Mexican civilians. The de Anza expeditionary force crossed the Cahuilla Valley, entered the San Jacinto Valley via Bautista Creek, and trekked northward over lands that are now part of March Air Reserve Base. In his five-volume series on the de Anza expedition, Herbert Eugene Bolton (1930) noted that the region offered good agricultural opportunities for large grain fields and livestock.

The San Jacinto Valley was part of the San Diego District, headquartered at the presidio in that town. Mission San Luis Rey was founded in 1798, near the present city of Oceanside. As the mission expanded, it established eight ranchos. The easternmost was Rancho San Jacinto, named after Saint Hyacinth, founded between 1816 and 1821.

With the signing of the Treaty of Guadalupe Hidalgo in 1848, ending the Mexican-American War, California entered into the American Period and, in 1850, became the 31st state in the Union. During the late 1840s, there began the decline of old California's cattle ranching industry, which for over half a century represented the currency and staple of the rancho system. By the 1850s to 1860s, cattle ranching in the general region had greatly declined, and ranchos changed ownership regularly. In 1852, San Diego organized into a county; in 1853, San Bernardino followed suit. Riverside County would be formed in 1893, carved out of portions of San Bernardino and San Diego counties, with the City of Riverside as the county seat. The San Jacinto Valley, of which Perris Valley is a part, was originally part of San Diego County.

As the land uses in the valley continued to expand, plans were developed to build a branch line from the California Southern Railroad at Perris into the valley, with its terminus at San Jacinto. The arrival of the Southern Pacific Railway into Colton resulted in a dramatic influx of new settlers into what is now western Riverside County. The Riverside Colony was founded in 1870, and agricultural lands in the region quickly began to be settled by homesteaders. The Riverside Land and Irrigating Company soon established a series of canal systems, tapping water from the Santa Ana River. During the 1880s and 1890s, and similar to the phenomena occurring in the area surrounding the Riverside Colony, irrigation canals were built, and the regional citrus industry took root in the greater San Jacinto Valley and surrounding areas. The arrival of reliable water distribution coincided with the arrival of a second transcontinental railroad.

In 1882, construction of a competing rail line into southern California, known as the California Southern Railway, was underway, financed by the Atchison, Topeka, and Santa Fe Railway Company. California Southern Railway's chief engineer, Frederick Thomas Perris, oversaw the building of the rail line from National City, near the Mexican border in San Diego County, north to Oceanside and across Temecula Canyon, then on to San Bernardino. Fred Perris drove the first passenger train into San Bernardino on September 13, 1883 (Gunther 1984:385). Once the railway had made its way through the Perris Valley in 1882, homesteaders began to stake their claim to land in the vicinity. The town of Pinacate had been established along the rail line on May 12, 1885, about 2 miles south of Perris, but settlers in the northern part of the valley desired a more centrally located town site. Settlers convinced the California Southern Railway officials on a suitable location, donated land for a railroad siding and town, built a depot, dug a well, and named it Perris in honor of Fred Perris. The townsite plat was filed February 16, 1886, and Perris was officially named a station along the Santa Fe line (Gunther 1984:385). The buildings and businesses at Pinacate were moved to Perris, and a hotel and saloon were among the first buildings constructed. The town was incorporated as a city on May 26, 1911 (City of Perris 2019).

The development of the California Southern line through Perris and Temecula in 1882, connection with the rest of the Santa Fe system in 1885–1886, and the founding of Perris in 1886 led to a surge of settlement in the region. A branch line was built from Perris through Ethanac, Menifee, Winchester, and Hemet to San Jacinto, whose station was opened in May of 1888.

During the construction of the line, a depot was built at Winchester, in Pleasant Valley, and opened in May 1888. The area now had that much sought-after rail access attractive to prospective farmers and ranchers. However, the California Southern “main line” to San Diego, running southwest from Perris was washed out by the Santa Margarita River in 1884 and in 1891. This second interruption of service in 1891 was not repaired, so through-service from Perris to San Diego ended that year, and Temecula became the new terminus of the California Southern line. All produce and goods were now funneled into San Bernardino and Riverside. This was a disappointment to interests in the Perris region.

Throughout much of the twentieth century, agriculture continued to be a major industry in the Perris Valley. Primary crops in the region focused on hay and grains irrigated by winter rains. Agriculture as a major industry has persisted to the present day, although urban growth and expansion have slowly replaced former agricultural lands. The post-World War II era ushered in a boom in commercial, industrial, and residential development in and near the region's urban centers, followed by the construction of several freeways linking urban areas to one another. U.S. Highway 395, which was once a two-lane road through Perris, was expanded during the 1960s and became Interstate 15E by 1972. Now signed as Interstate 215 through the Perris Valley, this route has expanded to a four-lane divided highway.

With the completion of Lake Perris in the early 1970s, Perris became attractive as a recreational area. In addition to the boating, fishing, swimming, hiking, and camping at Lake Perris, other recreational activities in the Perris Valley such as hot air ballooning and skydiving began to attract international recognition. During the first decade of 2000, inexpensive land and housing transformed many of the towns in southwestern Riverside County into “bedroom” communities for those working in Los Angeles, Orange, and San Diego counties. Increased population and



automobile traffic has resulted in the need for construction of new roads as well as expansion and improved safety of many of the pre-existing roads throughout the region. The over-expansion of the housing market, and ultimate crash in 2007, led to a shift in the region's development trend in recent years to increase infrastructure projects to support the population growth.

### **2.4.3 Project Specific History**

The four parcels comprising the Project area were part of an early (ca. 1928) land subdivision called Figadota Farms. When the Project area became part of the Riverside Tract, several of the lots were combined and they were assigned APNs. According to available historical sources, the Project area was under cultivation by the mid-1960s (NETR online 2019). Structures are noted along Perris Boulevard northeast of the Project area as early as 1942; however, they are well outside of the Project area. Ownership of the four parcels within the Project area has changed hands multiple times over the years, but the Project area was never developed and has remained vacant of any buildings or structures.

### 3

## CULTURAL RESOURCE LITERATURE AND RECORDS SEARCH

On October 1, 2018, prior to the field survey of the Project area, AÆ engaged the Eastern Information Center (EIC) of the California Historical Resource Information System (CHRIS), housed at the University of California, Riverside, to complete an archaeological literature and records search. The objective of this records search was to determine whether any prehistoric or historical cultural resources had been recorded previously within an area encompassing a 1-mile-wide radius of the Project area (Study Area). The records search indicated 43 cultural resource studies have been conducted previously within the Study Area. Five of these previous studies involved portions of the Project area (Table 3-1), resulting in approximately 100 percent of the Project area having been previously subjected to studies. A copy of the EIC records search results is provided in Appendix A.

**Table 3-1  
Previous Cultural Resource Studies in the Study Area**

<b>Author(s)</b>	<b>Date</b>	<b>EIC Reference #</b>	<b>Title</b>
McCarthy, Daniel F.	1987	RI-02171	Cultural Resources Inventory for the City of Moreno Valley, Riverside County, California
Scientific Resource Survey, Inc.	1988	RI-02323	Archaeological Assessment Form: May Project
White, Robert S.	1996	RI-04010	AN Archaeological Assessment of the 7300-Foot Perris Valley Channel Stage 1 Project, Moreno Valley, riverside County
Love, Bruce and Bai "Tom" Tang	1999	RI-04211*	Identification and Evaluation of Historic Properties Perris Valley Industrial Corridor Infrastructure Project Near the City of Perris, Riverside County, California
Cotterman, Cary D.	1999	RI-04299	Historic Structure Evaluation of Building 3002, March Air Reserve Base, Riverside County, California
Jones and Stokes Associates, Inc.	2000	RI-04404	Final Cultural Resource Inventory Report for the Williams Communications, Inc, Fiber Optic Cable System Installation Project Riverside to San Diego California Vol I-IV
McKenna, Jeanette A.	2000	RI-05027	A Phase I Cultural Resources Investigation of the Vesta Telecommunications, Inc. Fiber Optic Alignment, Riverside County to San Diego County, California
McKenna, Jeanette	2005	RI-05444	A Phase I Cultural Resources Investigation of the Ridge Property in the City of Perris, Riverside County, CA
Earth Tech	1995	RI-05550	Phase I Archaeological Survey of the Gregory Site, March Air Force Base, Riverside County, CA
Cotterman, Cary, Evelyn Chandler, and Rodger Mason	2004	RI-06072	Cultural Resources Survey of an 83.5 acre in Perris, Riverside County, CA
Cotterman, Cary, Evelyn Chandler, and Rodger Mason	2004	RI-06073	Archaeological Test Excavation of the Perris Indian School Site, Perris, Riverside County, California

**Table 3-1  
Previous Cultural Resource Studies in the Study Area**

<b>Author(s)</b>	<b>Date</b>	<b>EIC Reference #</b>	<b>Title</b>
Cotterman, Cary, Evelyn Chandler, and Rodger Mason	2004	RI-06074	Executive Summary Report for the Archaeological Investigations Conducted along Perris Boulevard, Perris, Riverside County, CA
Tang, Bai “Tom,” Michael Hogan, Thomas Shackford and John J. Eddy	2006	RI-06577	Historical/Archaeological Resources Survey Report, Rados-Perris Distribution Center, Assessor's Parcel No. 30-50-026, in the City of Perris, Riverside County, CA
Bodmer, Clarence, Robert Porter, and Laura H. Shaker	2006	RI-06579	Historical/Archaeological Resources Survey Report, All American Asphalt Plant, Assessor's Parcel No. 30-020-026, in the City of Perris, Riverside County, CA
McKenna, Jeanette A.	2006	RI-06836	A phase I Cultural Resources Investigation of the Overton Moore Industrial Project Property, in the City of Perris, Riverside County, California
McKenna, Jeanette A.	2006	RI-06898	A Phase 1 Cultural Resources, Investigation of the Perris 2, Project Area in the City, of Perris, Riverside, Co., California
Harrison, Jim	2003	RI-06914	Letter Report: Biological and Cultural Resources Due Diligence Regarding the 500-Acre Watson Land Company-Perris Property in Riverside County, California
Sanka, Jennifer M.	2007	RI-07396	Phase I Cultural Resources Assessment and Paleontological Records Review: Perris Boulevard Project in Moreno Valley, Riverside County, California
Tang, Bai “Tom,” Michael Hogan, Clarence Bodmer, Josh Smallwood, and Melissa Hernandez	2007	RI-07538*	Cultural Resources Technical Report, North Perris Industrial Specific Plan, City of Perris, Riverside County, California
Patterson, J., and Tsunoda, K.	2008	RI-07613	Archaeological Survey Report for Southern California Edison Company O&M-2008 B1355 Annual Capacitor Project for Pole #2037338E on the Chaney 12kv Circuit Riverside County, CA (WO#6077-5597, A#7-5504)
Clifford, J., and B. Smith	2005	RI-07620	A Cultural Resources Survey for the Idi Perris Project County of Riverside: APNs 302-080-011 through 302-080-017, 302-090-016, 302-090-017
Clifford, James, and Brian F. Smith	2005	RI-07691	A Cultural Resources Study for the Stratford Ranch Project
Schmid, Tiffany A.	2008	RI-07931	Lake Perris Dam Remediation Project Archaeological Survey Report, Riverside County, California
William Manely Consulting and Earth Tech	1995	RI-08272	Historic Building Inventory and Evaluation, March Air Force Base, Riverside County, California
Tang, Bai “Tom,” Thomas Shackford, Terri Jacquemain, and John Eddy	2010	RI-08351	Historical / Archaeological Resources Survey Report: Rados-Perris Distribution Center, Assessor's Parcel Number 303-050-002, in the City of Perris County of Riverside, California

**Table 3-1  
Previous Cultural Resource Studies in the Study Area**

<b>Author(s)</b>	<b>Date</b>	<b>EIC Reference #</b>	<b>Title</b>
Tang, Bai “Tom,” Michael Hogan, Deirdre Encarnacion, Daniel Ballester, and Nina Gallardo	2012	RI-08791	Historical/Archaeological Resources Survey Report; Assessor's Parcel Nos. 302-030-003, -006, and -011
Orfila, Rebecca S.	2012	RI-08792*	Letter Report: Cultural Resource Records Search Results for the SCE Co. Perris Rule 20-B Underground Project
Tang, Bai “Tom,” and Daniel Ballester	2012	RI-08860	Addendum to Historical/Archaeological/Paleontological Resources Survey JMM Trailer Storage Facility Project, City of Perris, Riverside County, California
Goodwin, Riordan	2013	RI-08983	Cultural Resources Assessment: Pelican Industrial Project, City of Perris, Riverside County, California
Goodwin, Riordan, and Ivan Strudwick	2012	RI-09014	Cultural Resources Assessment and Archaeological Testing, Stratford Ranch Industrial Warehouse Project, City of Perris, Riverside County, California
Keller, Jean A.	2013	RI-09054	A Phase I Cultural Resources Assessment of Tentative Parcel Map 36512, APN 314-170-005, 013 thru 016; 314-140-056; 314-180-001, 007, 009,010, 011,013,014
Ballester, Daniel	2015	RI-09270	Archaeological/Paleontological Monitoring Program Stratford Ranch Industrial Park Project in the City of Perris, Riverside County, California
Ballester, Daniel	2015	RI-09277	Archaeological/Paleontological Monitoring Program ORE Industrial; Perris Valley Logistics; Tentative Parcel Map No. 36010 Project in the City of Perris, Riverside County, California CRM TECH Contract No. 2783
McKenna, Jeanette A.	2016	RI-09464	A Phase I Cultural Resources Survey for the Proposed Commercial Development (Approximately 20 Acres) in the City of Moreno Valley, Riverside County, California
Sanka, Jennifer M., William R. Gillean, and Leslie Nay Irish	2016	RI-09546	Phase I Cultural Resources Assessment for the March Plaza Project +- 8.40 Acres in the City of Perris, Riverside County, California
Goodwin, Riordan	2014	RI-09560	Stratford Ranch Residential Detention Basin Project City of Perris County of Riverside, California
Ehringer, Candace, Chris Lockwood, and Michael Vader	2014	RI-09579	DWR Lake Perris Emergency Release Facility Project, Riverside County, California Phase I Cultural Resources Study
Haas, Hannah, Robert Ramirez, and Kevin Hunt	2015	RI-09756	City of Perris Valley Storm Channel Trail Project Cultural Resource Study
Kraft, Jennifer R., and Brian F. Smith	2016	RI-09806	A Phase I Cultural Resources Survey for the Proficiency HKR, LLC Perris Project, Perris, California
Smallwood, Josh, Tiffany Clark, and Roberta Thomas	2016	RI-10015	Cultural Resource Assessment of the Lateral B-5 to Oleander Channel Project, City of Perris, Riverside County, California
Jew, Nicholas P., and Dennis McDougall	2017	RI-10016*	Phase I Cultural Resource Assessment for the Perris Distribution Center Project, City of Perris, Riverside County, CA

**Table 3-1  
Previous Cultural Resource Studies in the Study Area**

<b>Author(s)</b>	<b>Date</b>	<b>EIC Reference #</b>	<b>Title</b>
Fulton, Phil	2014	RI-10199*	Discovery and Monitoring Plan for the Mid County Parkway
Smith, Brian F.	2017	RI-10251	A Phase I Cultural Resources Survey for the First Perry Logistics Center Project and Off-Site Improvements, Perris, California

\*Indicates study included a portion of the Project area

These studies resulted in the identification of a total of 15 previously recorded cultural resources within 1 mile of the Study Area for the proposed Duke Project. Twelve of the resources are archaeological: a single prehistoric site and 11 historical archaeological sites. In addition, three built-environment resources also were identified within the Study Area (Table 3-2). None of these resources are documented within the Duke Project area.

**Table 3-2 Cultural Resources in the Study Area**

<b>Primary</b>	<b>Trinomial</b>	<b>Description</b>
<b>Prehistoric Archaeological Sites</b>		
33-014136	CA-RIV-7758	Four bedrock milling features and prehistoric artifacts
<b>Historical Archaeological Sites</b>		
33-007674		Site of demolished Val Verde Elementary School
33-008699		Earthen reservoir and standpipe
33-008700		Site of demolished concrete base pad and standpipe
33-008703		Site of demolished house circa 1939
33-014109	CA-RIV-7744	Building foundations and trash scatter related to Perris Indian School
33-015853	CA-RIV-8222	Remains of concrete pads and irrigation system
33-015854		Concrete standpipe and well
33-016078	CA-RIV-8312	Remains of concrete pads and irrigation system
33-016238	CA-RIV-8389	Several pieces of historic farming equipment
33-019865	CA-RIV-10111	Remains of historic homestead and irrigation system
33-020334	CA-RIV-10260	Historic irrigation features
<b>Built-Environment Resources</b>		
33-005775	CA-RIV-5516H	Well-house
33-011265	CA-RIV-6726H	Old Aqueduct Road
33-024868		Segment of Webster Avenue

In addition to the EIC research, Æ also consulted the 1901 Elsinore 30-minute USGS topographic quadrangle, the 1901 and 1904 Southern California 60-minute USGS topographic quadrangles, the 1942 Perris 15-minute USGS topographic quadrangle, the 1947 and 1949 Santa Ana 60-minute USGS topographic quadrangles, and the 1953 and 1967 Perris 7.5-minute USGS topographic quadrangles to assess historical land uses in the Study Area. No structures, roads, or other features of historical interest are shown within the Project area on any of the historical maps. Barrett Avenue is depicted as a dirt road on the 1967 Perris 7.5-minute USGS topographic quadrangle.

## 4

### NATIVE AMERICAN COMMUNICATIONS

Æ contacted the NAHC on October 1, 2018, for a review of the SLF, to determine if any known Native American cultural properties (e.g., traditional use or gathering areas, places of religious or sacred activity) are present within or adjacent to the Project area. The NAHC responded on October 8, 2018, stating the SLF search was completed with negative results. The NAHC requested Æ contact Native American individuals and organizations to elicit information regarding cultural resource issues related to the proposed Project, if any.

Upon review of the Native American contact list and by removing redundancies and adding individuals and organizations geographically and culturally affiliated with the Project area, Æ contacted 11 individuals and/or organizations regarding the Project. Æ sent a letter via electronic mail on November 1, 2018 describing the Project and asking these individuals and organizations for their input. Copies of the letters, the list of contacts, and received responses are included in Appendix B. Æ sent follow-up email correspondence was sent to the organizations who had not responded to the initial request on November 15, 2018.

Individuals/organizations contacted include:

- Daniel Salgado, Chairperson of the Cahuilla Band of Indians
- Sonia Johnston, Tribal Chairperson of the Juaneño Band of Mission Indians
- Joyce Perry, Tribal Manager of the Juaneño Band of Mission Indians Acjachemen Nation
- Teresa Romero, Chairwoman of the Juaneño Band of Mission Indians Acjachemen Nation
- Shane Chapparosa, Chairman of the Los Coyotes Band of Cahuilla and Cupeño Indians
- Shasta Gaughen, Tribal Historic Preservation Officer of the Pala Band of Mission Indians
- Paul Macarro, Cultural Resources Coordinator of the Pechanga Band of Mission Indians
- Joseph Hamilton, Chairman of the Ramona Band of Cahuilla
- Jim McPherson of the Tribal Historic Preservation Officer of the Rincon Band of Mission Indians
- Steven Estrada, Chairman of the Santa Rosa Band of Cahuilla Indians
- Joseph Ontiveros, Cultural Resource Department of the Soboba Band of Luiseño Indians

As of November 20, 2018, three responses had been received. The Santa Rosa Band of Cahuilla Indians deferred further consultation and monitoring to the Soboba Band of Luiseño Indians. The Juaneño Band of Mission Indians Acjachemen Nation stated the Project was beyond their traditional territory; consequently, they yielded comments to the Tribes of the area. The Cahuilla Band of Indians noted the Project is within the Cahuilla traditional land use area and requested tribal monitoring during all ground-disturbing activities and to be notified of all updates and/or changes to the Project.

## 5

# CULTURAL RESOURCE SURVEY METHODS AND RESULTS

### 5.1 SURVEY METHODS

Æ Associate Archaeologist Evan Mills performed an intensive pedestrian field reconnaissance survey of the Project area on October 31, 2018. The survey began in the northeast corner of the Project area and was completed from east to west along transects oriented north-south and spaced 10 to 15 meters apart. All areas of the Project were accessible and surveyed. Overviews of the Project are shown in the photographs that follow (Figures 5-1, 5-2, and 5-3).

### 5.2 SURVEY RESULTS

The landscape in the Project area was a harvested agricultural field that had been cultivated recently. Ground-surface visibility throughout the Project area was excellent (75 to 100 percent) due to lack of vegetation. No native, undisturbed soils were observed on the ground surface during the intensive survey. Surface sediments were observed to be brown sands with abundant silt and uncommon gravel. No cultural resources were observed within the Project area.



**Figure 5-1** Project area overview from northeast corner, view to the southwest.



**Figure 5-2** Project area overview from southwest corner, view to the northeast.



**Figure 5-3** Project area overview from southwest corner, view to the north.



### 5.3 SUPPLEMENTAL SURVEY

The supplemental survey of the off-site improvements (i.e., potential 4-way traffic signal at the intersection of Perry Street and Indian Avenue and drainage connections) was conducted by Mr. Mills on February 7, 2019. The area is highly disturbed by commercial activity in the Project vicinity and road grading adjacent to Indian Avenue (see Figures 5-4 and 5-5). No cultural resources were identified during the supplemental survey.



**Figure 5-4** View of construction debris adjacent to Indian Avenue, view to the southeast.



**Figure 5-5** View of commercial developments adjacent (north) to Perry Street and Indian Avenue, view to the southeast.

## 6 MANAGEMENT RECOMMENDATIONS

Æ did not encounter any archaeological or built-environment resources within the Project area during the intensive Phase I and supplemental surveys. Results of the records search indicate 15 previously recorded cultural resources have been identified within 1 mile of the Project area, only one of which is prehistoric. Because the terrain throughout the Project area and proposed off-site improvement areas has been disturbed previously by cultivation and commercial activity, intact and significant buried archaeological deposits are unlikely. Therefore, no further cultural resource management of the Project area is recommended.

In the event that potentially significant archaeological materials are encountered during construction, all work must be halted in the vicinity of the discovery until a qualified archaeologist can visit the site of discovery and assess the significance and integrity of the find. If intact and significant archaeological remains are encountered, the impacts of the Project must be mitigated appropriately. Any such discoveries, and subsequent evaluation and treatment, should be documented in a cultural resource report, which should be submitted to the EIC for archival purposes.

Additionally, Health and Safety Code Section 7050.5, CEQA Guidelines Section 15064.5(e), and Public Resources Code Section 5097.98 mandate the process to be followed in the unlikely event of an accidental discovery of human remains in a location other than a dedicated cemetery.

Finally, if the Project area is expanded to include areas not covered by this survey or other recent cultural resource studies, additional cultural resource studies may be required.

7  
**REFERENCES**

Bancroft, H. H.

- 1886 *History of California Volume II 1800–1824*. Works of Hubert Howe Bancroft. The History Company, Publishers, San Francisco, California.

Bean, Lowell J.

- 1978 Cahuilla. In *Handbook of North American Indians, Vol. 8 (California)*. William C. Sturtevant, general editor, Robert F. Heizer, volume editor. Smithsonian Institution, Washington, D.C.

Bean, Lowell J., and Sylvia B. Vane

- 2001 *Eastside Reservoir Project Phase III: Ethnography and Ethnohistory*. Cultural Systems Research, Inc., Menlo Park, California. Submitted to Metropolitan Water District of Southern California, Los Angeles, California.

Beedle, Peggy, M. Colleen Hamilton, and Joan George

- 2010 *Final Historical Resources Evaluation Report: Realign State Route 79 between Domenigoni Parkway and Gilman Springs Road in the Cities of Hemet and San Jacinto and the County of Riverside, Riverside County, California, District 8-RIV-79-KP R25.4/R54.4 (PM R15.78/R33.80), 08-494000*. Applied EarthWorks, Inc., Hemet, California. Prepared on behalf of Riverside County Transportation Commission and CH2M HILL.

Bolton, H. E.

- 1930 *Anza's California Expeditions, Volume II Opening a Land Route to California, Diaries of Anza, Diaz, Garcés, and Palóu*. University of California Press, Berkeley, California.

Brackett, R. W.

- 1939 *A History of the Ranchos of San Diego County, California*. Union Title and Trust Company, San Diego, California.

City of Perris

- 2004 City of Perris General Plan 2030. Found at: <http://www.cityofperris.org/city-hall/general-plan.html>

- 2019 History. Found at: <http://www.cityofperris.org/about/history.html>.

Crouch, D. P., D. J. Garr, and A. I. Mundigo

- 1982 *Spanish City Planning in North America*. MIT Press, Cambridge, Massachusetts.

Earle, David D.

- 2006 *Archival Research Documents for the State Route 79 Project*. On file at Applied EarthWorks, Inc., Hemet, California.

Freers, Steven M., and Gerald A. Smith

- 1994 *Fading Images: Indian Pictographs of Western Riverside County*. Riverside Museum Press, Riverside, California.

Goldberg, S. K., and J. E. Arnold

- 1988 *Prehistoric Sites in the Prado Basin, California: Regional Context and Significance Evaluation*. INFOTEC Research, Inc., Sonora, California. Submitted to the U.S. Army Corps of Engineers, Los Angeles District, Los Angeles, California.

Goldberg, S. K., C. J. Klink, J. A. Onken, W. G. Spaulding, M. C. Robinson, M. C. Horne, and R. L. McKim

- 2001 *Metropolitan Water District of Southern California Eastside Reservoir Project Final Report of Archaeological Investigations, Vol. IV: Synthesis of Findings*. Report prepared by Applied EarthWorks, Inc., Hemet, California. Report submitted to the Metropolitan Water District of Southern California, Los Angeles, California.

Grenda, D. R.

- 1997 *Continuity & Change: 8,500 Years of Lacustrine Adaptation on the Shores of Lake Elsinore*. Technical Series 59, Statistical Research, Inc., Tucson, Arizona. Submitted to the U. S. Army Corps of Engineers, Los Angeles District, Los Angeles, California.

Gunther, Jane Davies

- 1984 *Riverside County, California, Place Names: Their Origins and Their Stories*. Rubidoux Printing Company, Riverside, California.

Hemet-San Jacinto Genealogical Society

- 2011 *San Jacinto Valley Past and Present*. Stevenson Genealogy Center, Provo, Utah.

Horne, Melinda C., and Dennis P. McDougall

- 2008 *CA-RIV-6069: Early Archaic Settlement and Subsistence in the San Jacinto Valley, Western Riverside County, California*. Applied EarthWorks, Inc., Hemet, California. Prepared for Inland Feeder Pipeline Project, The Metropolitan Water District of Southern California, Los Angeles, California.

Justice, Noel D.

- 2002 *Stone Age Spear and Arrow Points of California and the Great Basin*. Indiana University Press. Bloomington, Indiana.

Kroeber, A. L.

- 1925 *Handbook of the Indians of California*. Dover Publications, Inc., New York, New York.

McDougall, Dennis P.

- 1995 *Metropolitan Water District Eastside Reservoir Project, Summary of Emergency Investigations of Historic Properties, Prehistoric Site CA-RIV-5786*. Applied EarthWorks, Inc., Hemet, California. Submitted to Metropolitan Water District of Southern California, Los Angeles, California.

Moratto, M. J.

- 1984 *California Archaeology*. Academic Press, New York.

Morton, D. M.

- 1977 Surface deformation in part of the San Jacinto Valley, Southern California. *U.S. Geological Survey Journal of Research* 5(1):117–124.

Morton, D. M., and Miller, F. K.

- 2006 Geologic map of the San Bernardino and Santa Ana 30' x 60' quadrangles, California: U.S. Geological Survey, Open-File Report OF-2006-1217, scale 1:100,000.

NETR online

- 2019 <http://www.historicaerials.com/>.

O'Connell, J. F., P. J. Wilke, T. F. King, and C. L. Mix (editors)

- 1974 *Perris Reservoir Archaeology: Late Prehistoric Demographic Change in Southeastern California*. California Department of Parks and Recreation Archaeological Reports 14.

Onken, Jill A., and Melinda C. Horne

- 2001 Chronosequencing. In *Metropolitan Water District of Southern California Eastside Reservoir Project Archaeological Investigations*, Vol. IV: Chapter 3. Susan K. Goldberg, general editor. Applied EarthWorks, Inc., Hemet, California. Report submitted to Metropolitan Water District of Southern California, Los Angeles, California.

Rawls, James J., and Walton Bean

- 1998 *California, An Interpretive History*. McGraw-Hill Companies, Boston, Massachusetts.

Robinson, Mark C.

- 1998 *Arrow Points from the Eastside Reservoir Project: Typology and Chronology in the Late Prehistoric of Riverside County, California*. Unpublished Master's Thesis, University of Oregon, Eugene, Oregon.

- 2001 Units of Analysis. In *Metropolitan Water District of Southern California Eastside Reservoir Project Archaeological Investigations*, Vol. IV: Chapter 4. Susan K. Goldberg, general editor. Applied EarthWorks, Inc., Hemet, California. Report submitted to Metropolitan Water District of Southern California, Los Angeles, California.

- Robinson, W. W.  
 1957 *The Story of Riverside County*. Title Insurance and Trust Company, Los Angeles, California.
- Rolle, Andrew F.  
 1978 *California, A History*. Harlan Davidson, Inc, Arlington Heights, Illinois.
- Soil Survey Staff  
 2018a Soils Survey Spatial and Tabular Data (SSURGO 2.2). Electronic document: <http://datagateway.nrcs.usda.gov>. U.S. Department of Agriculture, Natural Resources Conservation Service, accessed November 2018.
- 2018b Online Soil Series Descriptions. Electronic document: <http://soils.usda.gov/technical/classification/osd/index.html>. U.S. Department of Agriculture, Natural Resources Conservation Service, accessed November 2018.
- 2018c Online Soil Series Descriptions. Electronic document: <http://soils.usda.gov/technical/classification/osd/index.html>. U.S. Department of Agriculture, Natural Resources Conservation Service, accessed November 2018.
- Stine, Scott  
 1994 “Extreme And Persistent Drought In California And Patagonia During Mediaeval Time.” *Nature* 369, pp. 546–549.
- Strong, William Duncan  
 1929 Aboriginal Society in Southern California. *University of California Publications in American Archaeology and Ethnology* 26(1):1–358. Berkeley, California.
- True, D. L.  
 1966 *Archaeological Differentiation of Shoshonean and Yuman Speaking Groups in Southern California*. Unpublished Ph.D. dissertation, Department of Anthropology, University of California, Los Angeles, California.
- 1970 *Investigations of a Late Prehistoric Complex in Cuyamaca State Park, San Diego County, California*. Archaeological Survey Monographs No. 1, University of California, Los Angeles, California.
- USGS (United States Geological Survey)  
 1901 Elsinore, Calif. 1:125,000/30-minute topographic quadrangle.
- 1901 Southern California 1:250,000/60-minute topographic quadrangle.
- 1904 Southern California 1:250,000/60-minute topographic quadrangle.
- 1942 Perris, Calif. 1:62,500/15-minute topographic quadrangle.
- 1947 Santa Ana, Calif. 1:250,000/60-minute topographic quadrangle.

1949 Santa Ana, Calif. 1:250,000/60-minute topographic quadrangle.

1953 Perris, Calif. 1:24,000/7.5-minute topographic quadrangle.

1967 Perris Calif. 1:24,000/7.5-minute topographic quadrangle.

Vane, Sylvia Brakke

2000 *Ethnographic Overview: Inland Feeder Project*. Cultural Systems Research Inc., Menlo Park, California. Submitted to Metropolitan Water District of Southern California, Los Angeles, California.

Warren, C. N.

1984 "The Desert Region." In *California Archaeology*, pp. 339–430, by Michael J. Moratto. Academic Press, New York and London.

Whitney, Mary E.

1982 *Fortune Favors the Brave: A History of the Lake Hemet Water Company*. Alphabet Printers, Hemet, California.



## **APPENDIX A**

### **Confidential Records Search Results**

**EASTERN INFORMATION CENTER**

California Historical Resources Information System  
Department of Anthropology, University of California, Riverside, CA 92521-0418  
(951) 827-5745 - eickw@ucr.edu  
Inyo, Mono, and Riverside Counties

October 15, 2018  
CHRIS Access and Use Agreement No.: 116  
ST-RIV-4895

Joan George  
Applied EarthWorks, Inc.  
3550 East Florida Avenue, Suite H  
Hemet, CA 92544

*Joan George 4895-RIV-5*

Re: Cultural Resources Records Search for the Duke Perry & Barrett Project (AEJob#3947)

Dear Joan George:

We received your request on October 1, 2018, for a cultural resources records search for the Duke Perry & Barrett Project (AEJob#3947) located in Section 6, T. 4S, R. 3W, SBBM, near the US Military Res area in the city of Perris in Riverside County. We have reviewed our site records, maps, and manuscripts against the location map you provided.

Our records indicate that 43 cultural resources studies have been conducted within a one-mile radius of your project area. Five of these studies involved the project area. PDF copies of these reports are included for your reference. Four additional studies provide overviews of cultural resources in the general project vicinity. All of these reports are listed on the attachments entitled "Eastern Information Center Report Listing" and "Eastern Information Center Report Spreadsheet" and are available upon request at 15¢/page plus \$40/hour for hard copies.

Our records indicate that 15 cultural resources properties have been recorded within a one-mile radius of your project area. None of these properties involved the project area. PDF copies of the records are included for your reference. All of these resources are listed on the attachments entitled "Eastern Information Center Resource Listing" and "Eastern Information Center Resource Spreadsheet."

The above information is reflected on the enclosed maps. Areas that have been surveyed are highlighted in yellow. Numbers marked in blue ink refer to the report number (RI #). Cultural resources properties are marked in red; numbers in black refer to Trinomial designations, those in green to Primary Number designations. National Register properties are indicated in light blue.

Additional sources of information consulted are identified below.

National Register of Historic Places: no listed properties are located within the boundaries of the project area.

Office of Historic Preservation (OHP), Archaeological Determinations of Eligibility (ADOE): no listed properties are located within the boundaries of the project area.

Office of Historic Preservation (OHP), Historic Property Directory (HPD): no listed properties are located within the boundaries of the project area.

*Note: not all properties in the California Historical Resources Information System are listed in the OHP ADOE and HPD; the ADOE and HPD comprise lists of properties submitted to the OHP for review.*

As the Information Center for Riverside County, it is necessary that we receive a copy of all cultural resources reports and site information pertaining to this county in order to maintain our map and manuscript files. Confidential information provided with this records search regarding the location of cultural resources outside the boundaries of your project area should not be included in reports addressing the project area.

Due to processing delays and other factors, not all of the historical resource reports and resource records that have been submitted to the Office of Historic Preservation are available via this records search. Additional information may be available through the federal, state, and local agencies that produced or paid for historical resource management work in the search area. Additionally, Native American tribes have historical resource information not in the California Historical Resources Information System (CHRIS) Inventory, and you should contact the California Native American Heritage Commission for information on local/regional tribal contacts.

The California Office of Historic Preservation (OHP) contracts with the California Historical Resources Information System's (CHRIS) regional Information Centers (ICs) to maintain information in the CHRIS inventory and make it available to local, state, and federal agencies, cultural resource professionals, Native American tribes, researchers, and the public. Recommendations made by the IC coordinators or their staff regarding the interpretation and application of this information are advisory only. Such recommendations do not necessarily represent the evaluation or opinion of the State Historic Preservation Officer in carrying out the OHP's regulatory authority under federal and state law.

Sincerely,

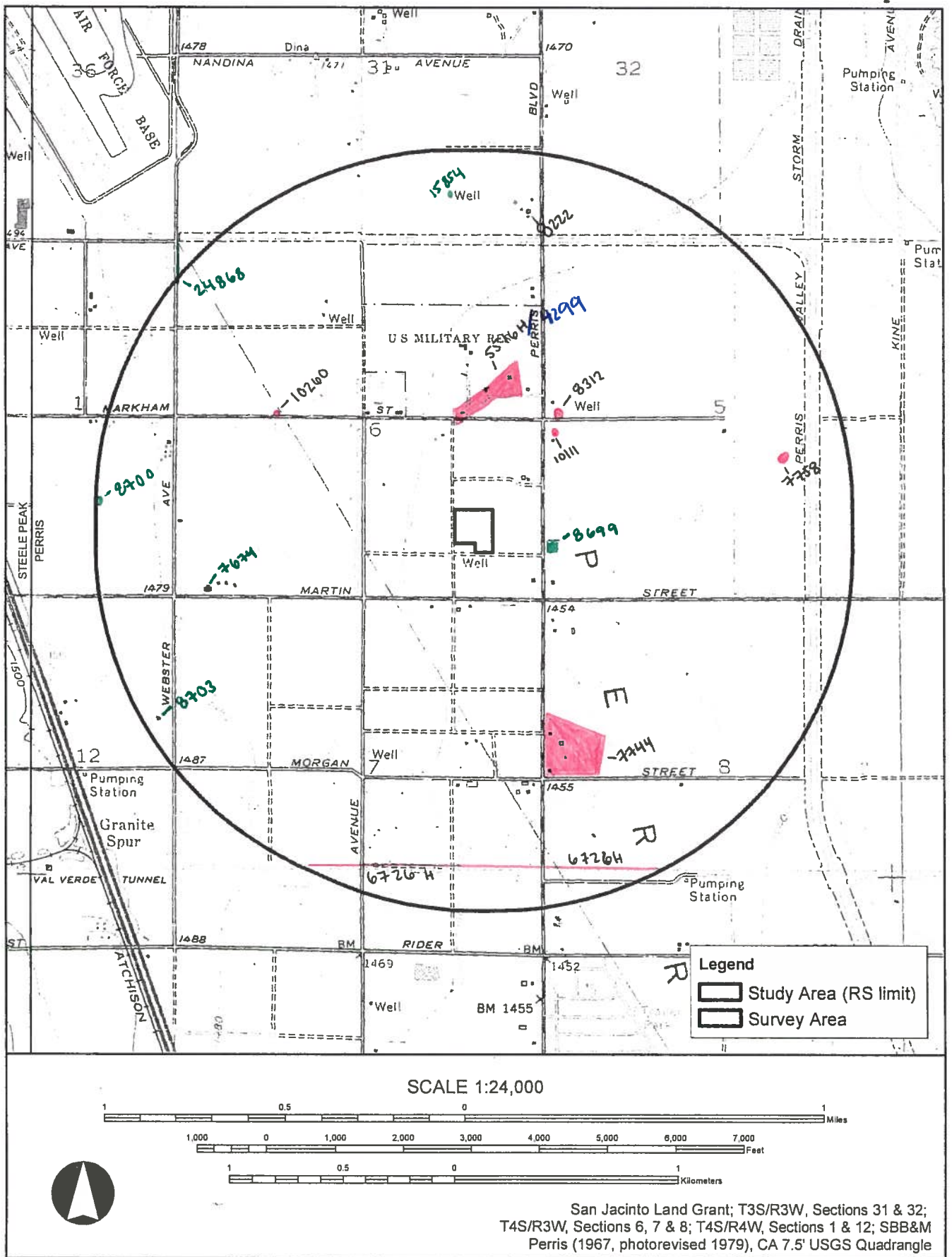


Your Name

Information Officer

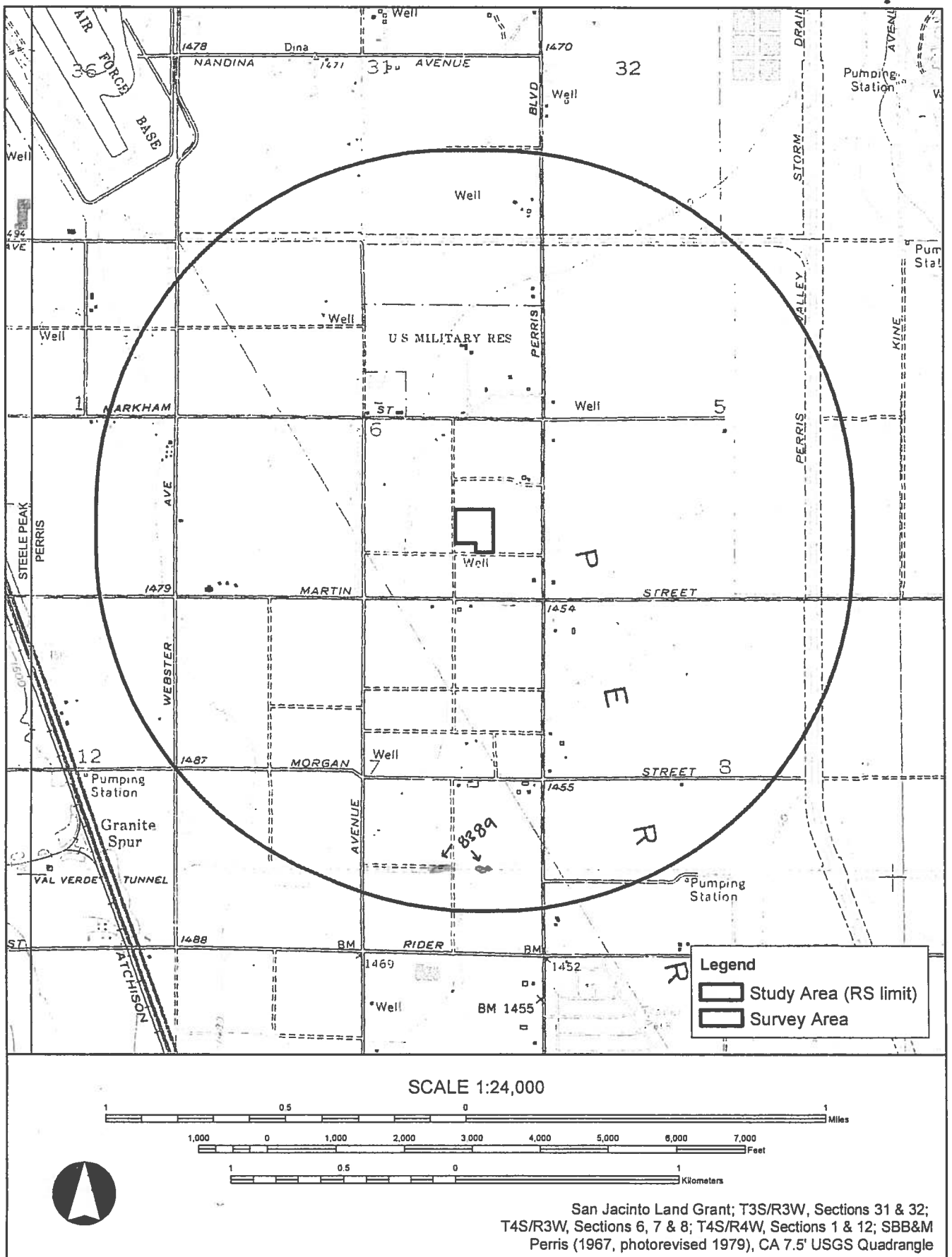
Enclosures

# RESOURCES



Records Search location map for the *Webb - Duke Perry St and Barrett Ave Project - AE #3947*.

RESOURCE

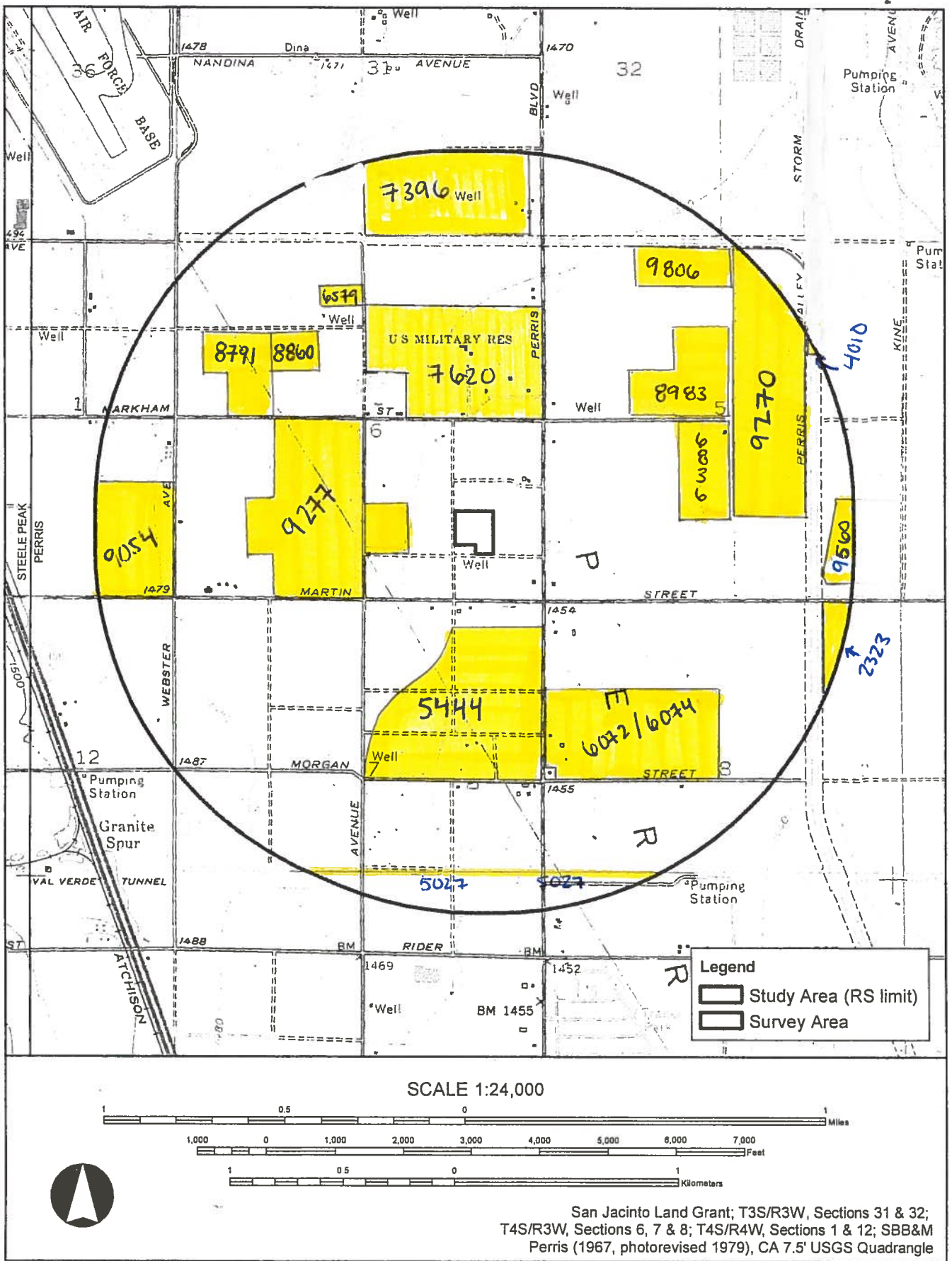


Records Search location map for the *Webb - Duke Perry St and Barrett Ave Project - AE #3947.*

REPORTS

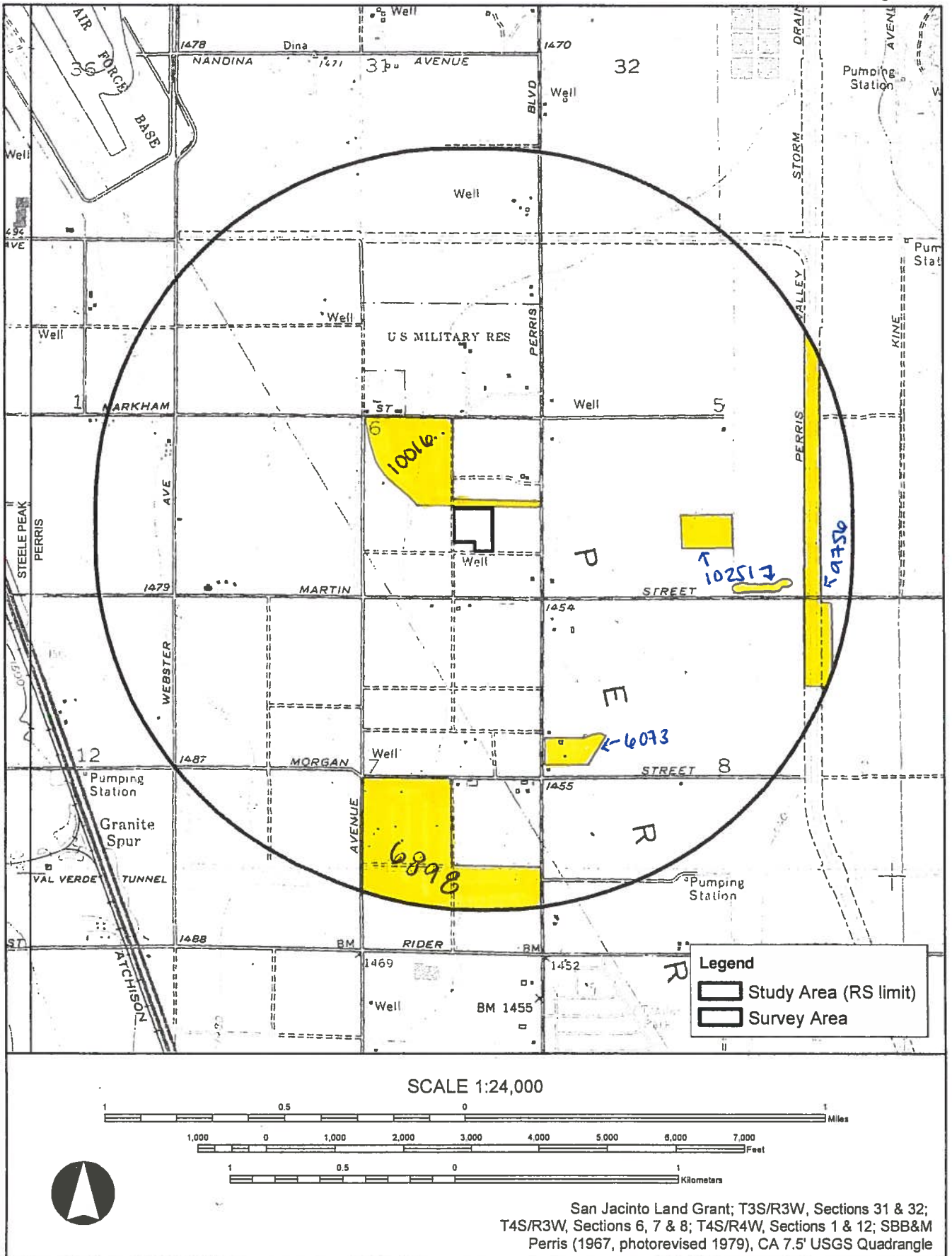
OVERVIEWS

R1-0002 R1-3604  
R1-1955 R1-4762



Records Search location map for the *Webb - Duke Perry St and Barrett Ave Project - AE #3947.*

REPORTS

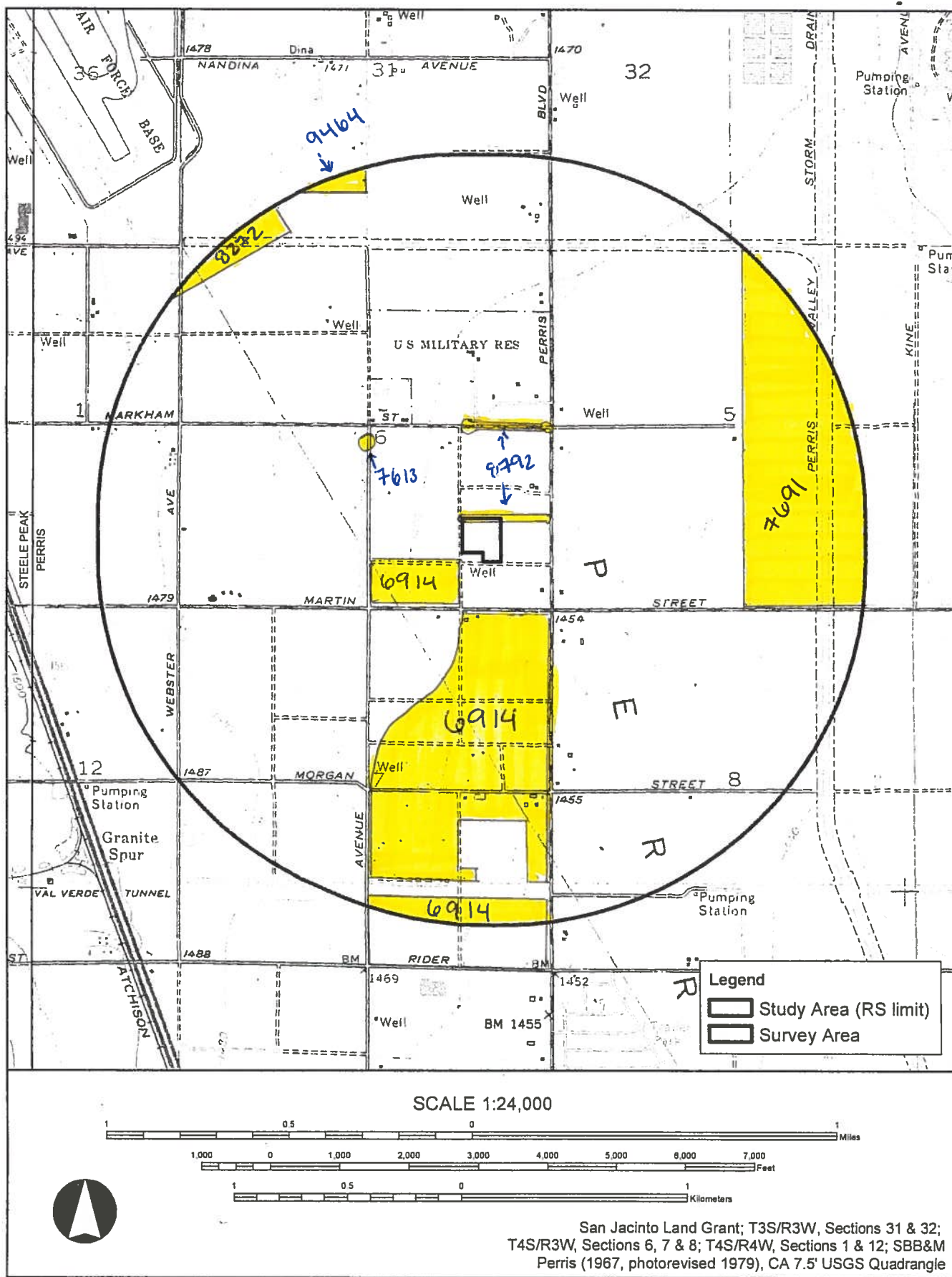


Records Search location map for the *Webb - Duke Perry St and Barrett Ave Project - AE #3947.*



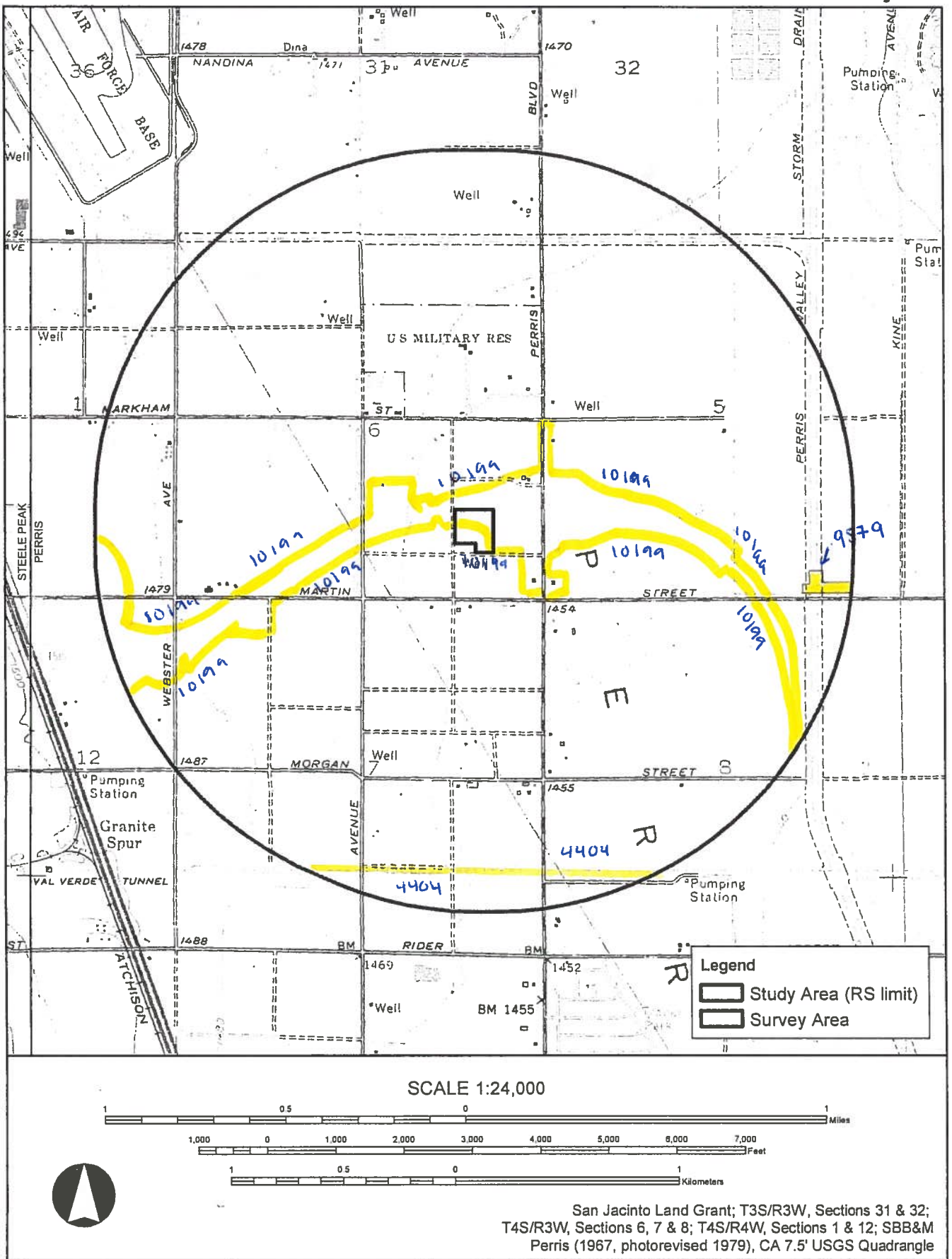


REPORT



Records Search location map for the Webb - Duke Perry St and Barrett Ave Project - AE #3947.

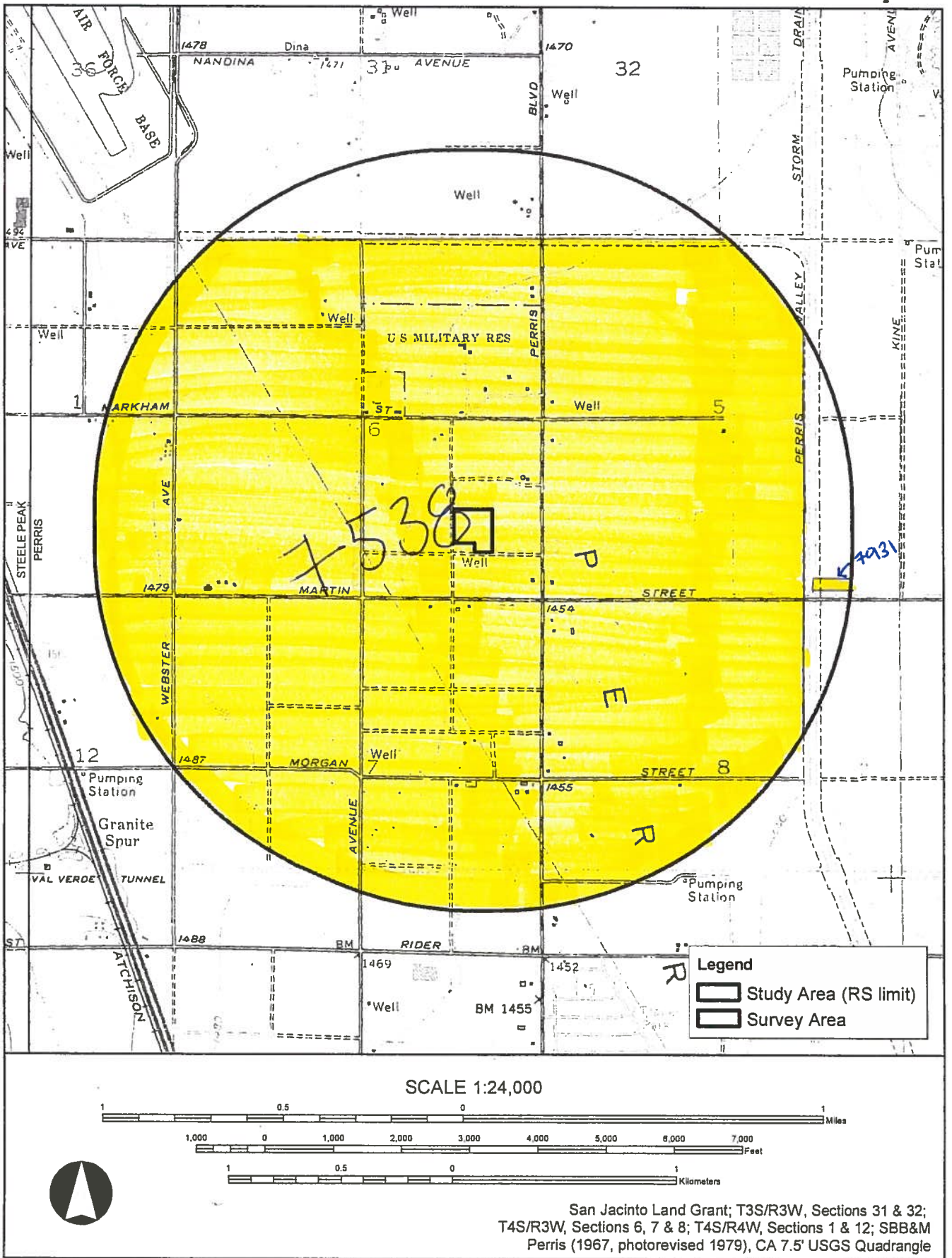
REPORT



Records Search location map for the *Webb - Duke Perry St and Barrett Ave Project - AE #3947*.

San Jacinto Land Grant; T3S/R3W, Sections 31 & 32;  
 T4S/R3W, Sections 6, 7 & 8; T4S/R4W, Sections 1 & 12; SBB&M  
 Perris (1967, photorevised 1979), CA 7.5' USGS Quadrangle

REPORT



Records Search location map for the Webb - Duke Perry St and Barrett Ave Project - AE #3947.

## **APPENDIX B**

### **Native American Communication**

**LIST OF NATIVE AMERICAN CONTACTS AND RECORD OF RESPONSES**

<b>Name</b>	<b>Date</b>	<b>Responses</b>
Daniel Salgado Chairperson Cahuilla Band of Indians	November 1, 2018 November 15, 2018 November 20, 2018	Scoping letter sent via email. Follow up sent via email. Received via email: The Cahuilla Band does not have knowledge of any cultural resources/sites within the project area. Although this project is outside the Cahuilla reservation boundaries, it is within the Cahuilla traditional land use area according to the map provided and our map also. We believe the possibility of cultural resources being discovered during construction and request tribal monitors to be present during all ground disturbing activities and to be notified of all updates and/or changes with the project moving forward.
Shane Chapparosa Chairman Los Coyotes Band of Cahuilla and Cupeno Indians	November 1, 2018 November 15, 2018	Scoping letter sent via email. Follow up sent via email. No response received.
Joseph Hamilton Chairman Ramona Band of Cahuilla	November 1, 2018 November 15, 2018	Scoping letter sent via email. Follow up sent via email. No response received.
Steven Estrada Chairman Santa Rosa Band of Cahuilla Indians	November 1, 2018  November 6, 2018	Scoping letter sent via email.  SRBCI defer further consultation and monitoring to the Soboba Band of Luiseño Indians
Joseph Ontiveros Cultural Resource Department Soboba Band of Luiseño Indians	November 1, 2018 November 15, 2018	Scoping letter sent via email. Follow up sent via email. No response received.
Shasta Gaughen Tribal Historic Preservation Officer Pala Band of Mission Indians	November 1, 2018 November 15, 2018	Scoping letter sent via email. Follow up sent via email. No response received.

Name	Date	Responses
Sonia Johnston Tribal Chairperson Juaneño Band of Mission Indians	November 1, 2018 November 15, 2018	Scoping letter sent via email. Follow up sent via email. No response received.
Paul Macarro Cultural Resources Coordinator Pechanga Band of Mission Indians	November 1, 2018 November 15, 2018	Scoping letter sent via email. Follow up sent via email. No response received.
Jim McPherson Tribal Historic Preservation Officer Rincon Band of Mission Indians	November 1, 2018 November 15, 2018	Scoping letter sent via email. Follow up sent via email. No response received.
Joyce Perry Tribal Manager Juaneño Band of Mission Indians Acjachemen Nation	November 1, 2018 November 15, 2018	Scoping letter sent via email. Received response via email: On behalf of the Juaneño Band of Mission Indians, Acjachemen Nation we will yield our comments to the Tribes of the area.
Teresa Romero Chairwoman Juaneño Band of Mission Indians Acjachemen Nation	November 1, 2018 November 15, 2018	Scoping letter sent via email. Follow up sent via email. No response received.

# Sacred Lands File & Native American Contacts List Request

## Native American Heritage Commission

1550 Harbor Boulevard, Suite 100

West Sacramento, CA 95691

916-373-3710

916-657-5390 – Fax

[nahc@nahc.ca.gov](mailto:nahc@nahc.ca.gov)

*Information Below is Required for a Sacred Lands File Search*

**Date:** October 1, 2018

**Project:** Duke Perry and Barrett Project (AE Job#3947)

**County:** Riverside

**USGS Quadrangle Name:** Perris

**Township:** 4 South

**Range:** 3 West

**Section(s):** 6

**Company/Firm/Agency:** Applied EarthWorks, Inc.

**Contact Person:** Joan George

**Street Address:** 3550 East Florida Avenue, Suite H

**City:** Hemet

**Zip:** 92544

**Phone:** (951) 766-2000

**Fax:** (951) 766-0020

**Email:** [jgeorge@appliedearthworks.com](mailto:jgeorge@appliedearthworks.com)

**Project Description:** The project proposes to construct an industrial warehouse on approximately 7 acres in the city of Perris. The project will result in ground disturbance. Applied EarthWorks, Inc. has been contracted to conduct a cultural resource study of the Project area in accordance with the California Environmental Quality Act (CEQA).

NATIVE AMERICAN HERITAGE COMMISSION  
Cultural and Environmental Department  
1550 Harbor Blvd., Suite 100  
West Sacramento, CA 95691  
Phone: (916) 373-3710  
Email: [nahc@nahc.ca.gov](mailto:nahc@nahc.ca.gov)  
Website: <http://www.nahc.ca.gov>  
Twitter: @CA\_NAHC



October 8, 2018

Joan George  
Applied EarthWorks, Inc.  
3550 E. Florida Ave., Suite H  
Hemet, CA 92544

VIA Email: [jgeorge@appliedearthworks.com](mailto:jgeorge@appliedearthworks.com)

RE: Duke Perry and Barrett Project (AE Job#3947)

A record search of the Native American Heritage Commission (NAHC) Sacred Lands File (SLF) was completed for the information you have submitted for the above referenced project. The results were negative. However, the absence of specific site information in the SLF does not indicate the absence of cultural resources in any project area. Other sources of cultural resources should also be contacted for information regarding known and recorded sites.

Attached is a list of Native American tribes who may also have knowledge of cultural resources in the project area. This list should provide a starting place in locating areas of potential adverse impact within the proposed project area. I suggest you contact all of those indicated; if they cannot supply information, they might recommend others with specific knowledge. By contacting all those listed, your organization will be better able to respond to claims of failure to consult with the appropriate tribe. If a response has not been received within two weeks of notification, the Commission requests that you follow-up with a telephone call or email to ensure that the project information has been received.

If you receive notification of change of addresses and phone numbers from tribes, please notify me. With your assistance we are able to assure that our lists contain current information. If you have any questions or need additional information, please contact me at my email address: [Katy.Sanchez@NAHC.Ca.Gov](mailto:Katy.Sanchez@NAHC.Ca.Gov).

Sincerely,

A handwritten signature in black ink that reads "Katy Sanchez for".

Katy Sanchez  
Associate Environmental Planner

Attachment





November 1, 2018

Shane Chapparosa  
Chairperson  
Los Coyotes Band of Mission Indians  
P.O. Box 189  
Warner Springs, CA, 92086

Re: Cultural Resource Assessment for the Duke Perry Street and Barret Avenue Project, City of Perris, Riverside County, California.

Dear Chairperson Chapparosa:

On behalf of Albert A. Webb Associates, Applied EarthWorks, Inc. (Æ) is conducting a cultural resource study for the Duke Perry Street and Barret Avenue Project (Project). The Project involves the proposed construction of an industrial warehouse on approximately 7 acres of land in the City of Perris. The Project is subject to the California Environmental Quality Act (CEQA) and the City of Perris is the lead CEQA agency. As indicated on the attached map, the Project is located on the Perris, CA 7.5' USGS quadrangle map within Township 4S / Range 3W, Section 6, San Bernardino Baseline and Meridian (S.B.B.M.).

The archaeological literature and records search conducted at the Eastern Information Center housed at the University of California, Riverside, indicates that 43 cultural resources studies have been conducted within a one-mile radius of the Project area. Five of these studies involved the Project area. Fifteen cultural resource sites have been recorded within a one-mile radius of the Project area. None of these resources are documented within the Project area. Æ was contracted to perform an archaeological survey of the Project area. The survey was completed on October 31, 2018. Transects spacing ranged from 10 to 15 meters. No cultural resources were observed during the survey.

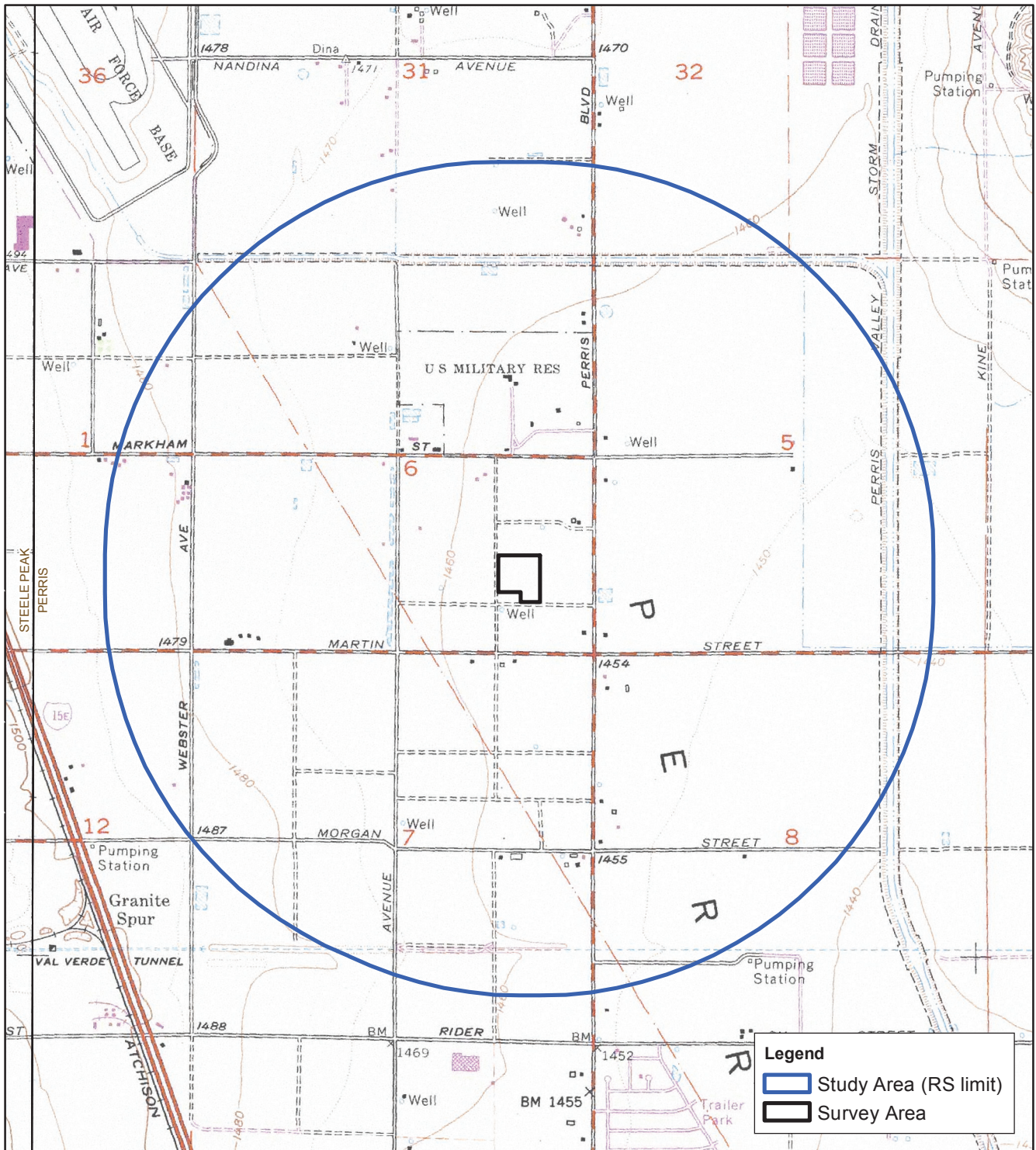
As part of the cultural resource assessment of the Project area, Æ requested a search of the *Sacred Lands File* by the Native American Heritage Commission (NAHC) on October 1, 2018. The NAHC responded on October 8, 2018 noting that *Sacred Lands File* search was completed with negative results. Should your records show that cultural properties exist within or near the Project area shown on the enclosed map, or if you have any concerns regarding Native American issues related to the overall Project, please contact me at (951) 766-2000 or via letter expressing your concerns. You may also e-mail me at [amiller@appliedearthworks.com](mailto:amiller@appliedearthworks.com). If I do not hear from you within the next two weeks, I will contact you with a follow-up phone call or email.

Please be aware that your comments and concerns are very important to us, as well as to the successful completion of this Project. I look forward to hearing from you in the near future. Thank you, in advance, for taking the time to review this request.

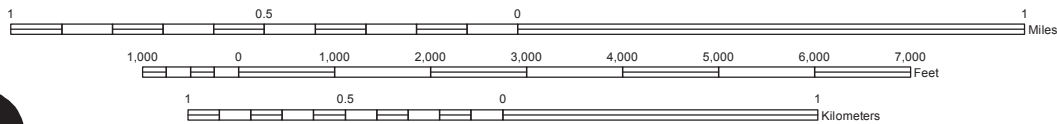
Respectfully yours,



Andrew D. Miller, MA  
Associate Archaeologist  
Applied EarthWorks, Inc.



SCALE 1:24,000



San Jacinto Land Grant; T3S/R3W, Sections 31 & 32;  
 T4S/R3W, Sections 6, 7 & 8; T4S/R4W, Sections 1 & 12; SBB&M  
 Perris (1967, photorevised 1979), CA 7.5' USGS Quadrangle

Records Search location map for the *Webb - Duke Perry St and Barrett Ave Project - AE #3947.*

November 1, 2018

Steven Estrada  
Chairperson  
Santa Rosa Band of Mission Indians  
P.O. Box 391820  
Anza, CA 92539

Re: Cultural Resource Assessment for the Duke Perry Street and Barret Avenue Project, City of Perris, Riverside County, California.

Dear Chairperson Estrada:

On behalf of Albert A. Webb Associates, Applied EarthWorks, Inc. (Æ) is conducting a cultural resource study for the Duke Perry Street and Barret Avenue Project (Project). The Project involves the proposed construction of an industrial warehouse on approximately 7 acres of land in the City of Perris. The Project is subject to the California Environmental Quality Act (CEQA) and the City of Perris is the lead CEQA agency. As indicated on the attached map, the Project is located on the Perris, CA 7.5' USGS quadrangle map within Township 4S / Range 3W, Section 6, San Bernardino Baseline and Meridian (S.B.B.M.).

The archaeological literature and records search conducted at the Eastern Information Center housed at the University of California, Riverside, indicates that 43 cultural resources studies have been conducted within a one-mile radius of the Project area. Five of these studies involved the Project area. Fifteen cultural resource sites have been recorded within a one-mile radius of the Project area. None of these resources are documented within the Project area. Æ was contracted to perform an archaeological survey of the Project area. The survey was completed on October 31, 2018. Transects spacing ranged from 10 to 15 meters. No cultural resources were observed during the survey.

As part of the cultural resource assessment of the Project area, Æ requested a search of the *Sacred Lands File* by the Native American Heritage Commission (NAHC) on October 1, 2018. The NAHC responded on October 8, 2018 noting that *Sacred Lands File* search was completed with negative results. Should your records show that cultural properties exist within or near the Project area shown on the enclosed map, or if you have any concerns regarding Native American issues related to the overall Project, please contact me at (951) 766-2000 or via letter expressing your concerns. You may also e-mail me at [amiller@appliedearthworks.com](mailto:amiller@appliedearthworks.com). If I do not hear from you within the next two weeks, I will contact you with a follow-up phone call or email.

Please be aware that your comments and concerns are very important to us, as well as to the successful completion of this Project. I look forward to hearing from you in the near future. Thank you, in advance, for taking the time to review this request.

Respectfully yours,



Andrew D. Miller, MA  
Associate Archaeologist  
Applied EarthWorks, Inc.

November 1, 2018

Shasta Gaughen  
Preservation Officer  
Pala Band of Mission Indians  
PMB 50, 35008 Pala Temecula Rd.  
Pala, CA, 92059

Re: Cultural Resource Assessment for the Duke Perry Street and Barret Avenue Project, City of Perris, Riverside County, California.

Dear Ms. Gaughen:

On behalf of Albert A. Webb Associates, Applied EarthWorks, Inc. (Æ) is conducting a cultural resource study for the Duke Perry Street and Barret Avenue Project (Project). The Project involves the proposed construction of an industrial warehouse on approximately 7 acres of land in the City of Perris. The Project is subject to the California Environmental Quality Act (CEQA) and the City of Perris is the lead CEQA agency. As indicated on the attached map, the Project is located on the Perris, CA 7.5' USGS quadrangle map within Township 4S / Range 3W, Section 6, San Bernardino Baseline and Meridian (S.B.B.M.).

The archaeological literature and records search conducted at the Eastern Information Center housed at the University of California, Riverside, indicates that 43 cultural resources studies have been conducted within a one-mile radius of the Project area. Five of these studies involved the Project area. Fifteen cultural resource sites have been recorded within a one-mile radius of the Project area. None of these resources are documented within the Project area. Æ was contracted to perform an archaeological survey of the Project area. The survey was completed on October 31, 2018. Transects spacing ranged from 10 to 15 meters. No cultural resources were observed during the survey.

As part of the cultural resource assessment of the Project area, Æ requested a search of the *Sacred Lands File* by the Native American Heritage Commission (NAHC) on October 1, 2018. The NAHC responded on October 8, 2018 noting that *Sacred Lands File* search was completed with negative results. Should your records show that cultural properties exist within or near the Project area shown on the enclosed map, or if you have any concerns regarding Native American issues related to the overall Project, please contact me at (951) 766-2000 or via letter expressing your concerns. You may also e-mail me at [amiller@appliedearthworks.com](mailto:amiller@appliedearthworks.com). If I do not hear from you within the next two weeks, I will contact you with a follow-up phone call or email.

Please be aware that your comments and concerns are very important to us, as well as to the successful completion of this Project. I look forward to hearing from you in the near future. Thank you, in advance, for taking the time to review this request.

Respectfully yours,



Andrew D. Miller, MA  
Associate Archaeologist  
Applied EarthWorks, Inc.

November 1, 2018

Joseph Hamilton  
Chairperson  
Ramona Band of Cahuilla Mission Indians  
P.O. Box 391670  
Anza, CA 92539

Re: Cultural Resource Assessment for the Duke Perry Street and Barret Avenue Project, City of Perris, Riverside County, California.

Dear Chairperson Hamilton:

On behalf of Albert A. Webb Associates, Applied EarthWorks, Inc. (Æ) is conducting a cultural resource study for the Duke Perry Street and Barret Avenue Project (Project). The Project involves the proposed construction of an industrial warehouse on approximately 7 acres of land in the City of Perris. The Project is subject to the California Environmental Quality Act (CEQA) and the City of Perris is the lead CEQA agency. As indicated on the attached map, the Project is located on the Perris, CA 7.5' USGS quadrangle map within Township 4S / Range 3W, Section 6, San Bernardino Baseline and Meridian (S.B.B.M.).

The archaeological literature and records search conducted at the Eastern Information Center housed at the University of California, Riverside, indicates that 43 cultural resources studies have been conducted within a one-mile radius of the Project area. Five of these studies involved the Project area. Fifteen cultural resource sites have been recorded within a one-mile radius of the Project area. None of these resources are documented within the Project area. Æ was contracted to perform an archaeological survey of the Project area. The survey was completed on October 31, 2018. Transects spacing ranged from 10 to 15 meters. No cultural resources were observed during the survey.

As part of the cultural resource assessment of the Project area, Æ requested a search of the *Sacred Lands File* by the Native American Heritage Commission (NAHC) on October 1, 2018. The NAHC responded on October 8, 2018 noting that *Sacred Lands File* search was completed with negative results. Should your records show that cultural properties exist within or near the Project area shown on the enclosed map, or if you have any concerns regarding Native American issues related to the overall Project, please contact me at (951) 766-2000 or via letter expressing your concerns. You may also e-mail me at [amiller@appliedearthworks.com](mailto:amiller@appliedearthworks.com). If I do not hear from you within the next two weeks, I will contact you with a follow-up phone call or email.

Please be aware that your comments and concerns are very important to us, as well as to the successful completion of this Project. I look forward to hearing from you in the near future. Thank you, in advance, for taking the time to review this request.

Respectfully yours,



Andrew D. Miller, MA  
Associate Archaeologist  
Applied EarthWorks, Inc.

November 1, 2018

Sonia Johnston  
Tribal Chairperson  
Juaneño Band of Mission Indians  
P.O. Box 25628  
Santa Ana, CA, 92799

Re: Cultural Resource Assessment for the Duke Perry Street and Barret Avenue Project, City of Perris, Riverside County, California.

Dear Chairperson Johnston:

On behalf of Albert A. Webb Associates, Applied EarthWorks, Inc. (Æ) is conducting a cultural resource study for the Duke Perry Street and Barret Avenue Project (Project). The Project involves the proposed construction of an industrial warehouse on approximately 7 acres of land in the City of Perris. The Project is subject to the California Environmental Quality Act (CEQA) and the City of Perris is the lead CEQA agency. As indicated on the attached map, the Project is located on the Perris, CA 7.5' USGS quadrangle map within Township 4S / Range 3W, Section 6, San Bernardino Baseline and Meridian (S.B.B.M.).

The archaeological literature and records search conducted at the Eastern Information Center housed at the University of California, Riverside, indicates that 43 cultural resources studies have been conducted within a one-mile radius of the Project area. Five of these studies involved the Project area. Fifteen cultural resource sites have been recorded within a one-mile radius of the Project area. None of these resources are documented within the Project area. Æ was contracted to perform an archaeological survey of the Project area. The survey was completed on October 31, 2018. Transects spacing ranged from 10 to 15 meters. No cultural resources were observed during the survey.

As part of the cultural resource assessment of the Project area, Æ requested a search of the *Sacred Lands File* by the Native American Heritage Commission (NAHC) on October 1, 2018. The NAHC responded on October 8, 2018 noting that *Sacred Lands File* search was completed with negative results. Should your records show that cultural properties exist within or near the Project area shown on the enclosed map, or if you have any concerns regarding Native American issues related to the overall Project, please contact me at (951) 766-2000 or via letter expressing your concerns. You may also e-mail me at [amiller@appliedearthworks.com](mailto:amiller@appliedearthworks.com). If I do not hear from you within the next two weeks, I will contact you with a follow-up phone call or email.

Please be aware that your comments and concerns are very important to us, as well as to the successful completion of this Project. I look forward to hearing from you in the near future. Thank you, in advance, for taking the time to review this request.

Respectfully yours,



Andrew D. Miller, MA  
Associate Archaeologist  
Applied EarthWorks, Inc.

November 1, 2018

Paul Macarro  
Cultural Resources Coordinator  
Pechanga Band of Mission Indians  
P.O. Box 1477  
Temecula, CA 92593

Re: Cultural Resource Assessment for the Duke Perry Street and Barret Avenue Project, City of Perris, Riverside County, California.

Dear Mr. Macarro:

On behalf of Albert A. Webb Associates, Applied EarthWorks, Inc. (Æ) is conducting a cultural resource study for the Duke Perry Street and Barret Avenue Project (Project). The Project involves the proposed construction of an industrial warehouse on approximately 7 acres of land in the City of Perris. The Project is subject to the California Environmental Quality Act (CEQA) and the City of Perris is the lead CEQA agency. As indicated on the attached map, the Project is located on the Perris, CA 7.5' USGS quadrangle map within Township 4S / Range 3W, Section 6, San Bernardino Baseline and Meridian (S.B.B.M.).

The archaeological literature and records search conducted at the Eastern Information Center housed at the University of California, Riverside, indicates that 43 cultural resources studies have been conducted within a one-mile radius of the Project area. Five of these studies involved the Project area. Fifteen cultural resource sites have been recorded within a one-mile radius of the Project area. None of these resources are documented within the Project area. Æ was contracted to perform an archaeological survey of the Project area. The survey was completed on October 31, 2018. Transects spacing ranged from 10 to 15 meters. No cultural resources were observed during the survey.

As part of the cultural resource assessment of the Project area, Æ requested a search of the *Sacred Lands File* by the Native American Heritage Commission (NAHC) on October 1, 2018. The NAHC responded on October 8, 2018 noting that *Sacred Lands File* search was completed with negative results. Should your records show that cultural properties exist within or near the Project area shown on the enclosed map, or if you have any concerns regarding Native American issues related to the overall Project, please contact me at (951) 766-2000 or via letter expressing your concerns. You may also e-mail me at [amiller@appliedearthworks.com](mailto:amiller@appliedearthworks.com). If I do not hear from you within the next two weeks, I will contact you with a follow-up phone call or email.

Please be aware that your comments and concerns are very important to us, as well as to the successful completion of this Project. I look forward to hearing from you in the near future. Thank you, in advance, for taking the time to review this request.

Respectfully yours,



Andrew D. Miller, MA  
Associate Archaeologist  
Applied EarthWorks, Inc.



November 1, 2018

Jim McPherson  
Tribal Historic Preservation Officer  
Rincon Band of Mission Indians  
1 West Tribal Road  
Valley Center, CA 92082

Re: Cultural Resource Assessment for the Duke Perry Street and Barret Avenue Project, City of Perris, Riverside County, California.

Dear Mr. McPherson:

On behalf of Albert A. Webb Associates, Applied EarthWorks, Inc. (Æ) is conducting a cultural resource study for the Duke Perry Street and Barret Avenue Project (Project). The Project involves the proposed construction of an industrial warehouse on approximately 7 acres of land in the City of Perris. The Project is subject to the California Environmental Quality Act (CEQA) and the City of Perris is the lead CEQA agency. As indicated on the attached map, the Project is located on the Perris, CA 7.5' USGS quadrangle map within Township 4S / Range 3W, Section 6, San Bernardino Baseline and Meridian (S.B.B.M.).

The archaeological literature and records search conducted at the Eastern Information Center housed at the University of California, Riverside, indicates that 43 cultural resources studies have been conducted within a one-mile radius of the Project area. Five of these studies involved the Project area. Fifteen cultural resource sites have been recorded within a one-mile radius of the Project area. None of these resources are documented within the Project area. Æ was contracted to perform an archaeological survey of the Project area. The survey was completed on October 31, 2018. Transects spacing ranged from 10 to 15 meters. No cultural resources were observed during the survey.

As part of the cultural resource assessment of the Project area, Æ requested a search of the *Sacred Lands File* by the Native American Heritage Commission (NAHC) on October 1, 2018. The NAHC responded on October 8, 2018 noting that *Sacred Lands File* search was completed with negative results. Should your records show that cultural properties exist within or near the Project area shown on the enclosed map, or if you have any concerns regarding Native American issues related to the overall Project, please contact me at (951) 766-2000 or via letter expressing your concerns. You may also e-mail me at [amiller@appliedearthworks.com](mailto:amiller@appliedearthworks.com). If I do not hear from you within the next two weeks, I will contact you with a follow-up phone call or email.

Please be aware that your comments and concerns are very important to us, as well as to the successful completion of this Project. I look forward to hearing from you in the near future. Thank you, in advance, for taking the time to review this request.

Respectfully yours,



Andrew D. Miller, MA  
Associate Archaeologist  
Applied EarthWorks, Inc.

November 1, 2018

Joseph Ontiveros  
Cultural Resource Department  
Soboba Band of Luiseno Indians  
P.O. Box 487  
San Jacinto, CA 92581

Re: Cultural Resource Assessment for the Duke Perry Street and Barret Avenue Project, City of Perris, Riverside County, California.

Dear Mr. Ontiveros:

On behalf of Albert A. Webb Associates, Applied EarthWorks, Inc. (Æ) is conducting a cultural resource study for the Duke Perry Street and Barret Avenue Project (Project). The Project involves the proposed construction of an industrial warehouse on approximately 7 acres of land in the City of Perris. The Project is subject to the California Environmental Quality Act (CEQA) and the City of Perris is the lead CEQA agency. As indicated on the attached map, the Project is located on the Perris, CA 7.5' USGS quadrangle map within Township 4S / Range 3W, Section 6, San Bernardino Baseline and Meridian (S.B.B.M.).

The archaeological literature and records search conducted at the Eastern Information Center housed at the University of California, Riverside, indicates that 43 cultural resources studies have been conducted within a one-mile radius of the Project area. Five of these studies involved the Project area. Fifteen cultural resource sites have been recorded within a one-mile radius of the Project area. None of these resources are documented within the Project area. Æ was contracted to perform an archaeological survey of the Project area. The survey was completed on October 31, 2018. Transects spacing ranged from 10 to 15 meters. No cultural resources were observed during the survey.

As part of the cultural resource assessment of the Project area, Æ requested a search of the *Sacred Lands File* by the Native American Heritage Commission (NAHC) on October 1, 2018. The NAHC responded on October 8, 2018 noting that *Sacred Lands File* search was completed with negative results. Should your records show that cultural properties exist within or near the Project area shown on the enclosed map, or if you have any concerns regarding Native American issues related to the overall Project, please contact me at (951) 766-2000 or via letter expressing your concerns. You may also e-mail me at [amiller@appliedearthworks.com](mailto:amiller@appliedearthworks.com). If I do not hear from you within the next two weeks, I will contact you with a follow-up phone call or email.

Please be aware that your comments and concerns are very important to us, as well as to the successful completion of this Project. I look forward to hearing from you in the near future. Thank you, in advance, for taking the time to review this request.

Respectfully yours,



Andrew D. Miller, MA  
Associate Archaeologist  
Applied EarthWorks, Inc.

November 1, 2018

Joyce Perry  
Tribal Manager  
Juaneño Band of Mission Indians Acjachemen Nation  
4955 Paseo Segovia.  
Irvine, CA, 92612

Re: Cultural Resource Assessment for the Duke Perry Street and Barret Avenue Project, City of Perris, Riverside County, California.

Dear Ms. Perry:

On behalf of Albert A. Webb Associates, Applied EarthWorks, Inc. (Æ) is conducting a cultural resource study for the Duke Perry Street and Barret Avenue Project (Project). The Project involves the proposed construction of an industrial warehouse on approximately 7 acres of land in the City of Perris. The Project is subject to the California Environmental Quality Act (CEQA) and the City of Perris is the lead CEQA agency. As indicated on the attached map, the Project is located on the Perris, CA 7.5' USGS quadrangle map within Township 4S / Range 3W, Section 6, San Bernardino Baseline and Meridian (S.B.B.M.).

The archaeological literature and records search conducted at the Eastern Information Center housed at the University of California, Riverside, indicates that 43 cultural resources studies have been conducted within a one-mile radius of the Project area. Five of these studies involved the Project area. Fifteen cultural resource sites have been recorded within a one-mile radius of the Project area. None of these resources are documented within the Project area. Æ was contracted to perform an archaeological survey of the Project area. The survey was completed on October 31, 2018. Transects spacing ranged from 10 to 15 meters. No cultural resources were observed during the survey.

As part of the cultural resource assessment of the Project area, Æ requested a search of the *Sacred Lands File* by the Native American Heritage Commission (NAHC) on October 1, 2018. The NAHC responded on October 8, 2018 noting that *Sacred Lands File* search was completed with negative results. Should your records show that cultural properties exist within or near the Project area shown on the enclosed map, or if you have any concerns regarding Native American issues related to the overall Project, please contact me at (951) 766-2000 or via letter expressing your concerns. You may also e-mail me at [amiller@appliedearthworks.com](mailto:amiller@appliedearthworks.com). If I do not hear from you within the next two weeks, I will contact you with a follow-up phone call or email.

Please be aware that your comments and concerns are very important to us, as well as to the successful completion of this Project. I look forward to hearing from you in the near future. Thank you, in advance, for taking the time to review this request.

Respectfully yours,



Andrew D. Miller, MA  
Associate Archaeologist  
Applied EarthWorks, Inc.

November 1, 2018

Teresa Romero  
Chairwoman  
Juaneño Band of Mission Indians Acjachemen Nation  
31411-A La Matanza St.  
San Juan Capistrano, CA, 92675

Re: Cultural Resource Assessment for the Duke Perry Street and Barret Avenue Project, City of Perris, Riverside County, California.

Dear Chairwoman Romero:

On behalf of Albert A. Webb Associates, Applied EarthWorks, Inc. (Æ) is conducting a cultural resource study for the Duke Perry Street and Barret Avenue Project (Project). The Project involves the proposed construction of an industrial warehouse on approximately 7 acres of land in the City of Perris. The Project is subject to the California Environmental Quality Act (CEQA) and the City of Perris is the lead CEQA agency. As indicated on the attached map, the Project is located on the Perris, CA 7.5' USGS quadrangle map within Township 4S / Range 3W, Section 6, San Bernardino Baseline and Meridian (S.B.B.M.).

The archaeological literature and records search conducted at the Eastern Information Center housed at the University of California, Riverside, indicates that 43 cultural resources studies have been conducted within a one-mile radius of the Project area. Five of these studies involved the Project area. Fifteen cultural resource sites have been recorded within a one-mile radius of the Project area. None of these resources are documented within the Project area. Æ was contracted to perform an archaeological survey of the Project area. The survey was completed on October 31, 2018. Transects spacing ranged from 10 to 15 meters. No cultural resources were observed during the survey.

As part of the cultural resource assessment of the Project area, Æ requested a search of the *Sacred Lands File* by the Native American Heritage Commission (NAHC) on October 1, 2018. The NAHC responded on October 8, 2018 noting that *Sacred Lands File* search was completed with negative results. Should your records show that cultural properties exist within or near the Project area shown on the enclosed map, or if you have any concerns regarding Native American issues related to the overall Project, please contact me at (951) 766-2000 or via letter expressing your concerns. You may also e-mail me at [amiller@appliedearthworks.com](mailto:amiller@appliedearthworks.com). If I do not hear from you within the next two weeks, I will contact you with a follow-up phone call or email.

Please be aware that your comments and concerns are very important to us, as well as to the successful completion of this Project. I look forward to hearing from you in the near future. Thank you, in advance, for taking the time to review this request.

Respectfully yours,



Andrew D. Miller, MA  
Associate Archaeologist  
Applied EarthWorks, Inc.

November 1, 2018

Daniel Salgado  
Chairperson  
Cahuilla Band of Indians  
52701 U.S. Highway 371  
Anza, CA, 92539

Re: Cultural Resource Assessment for the Duke Perry Street and Barret Avenue Project, City of Perris, Riverside County, California.

Dear Chairperson Salgado:

On behalf of Albert A. Webb Associates, Applied EarthWorks, Inc. (Æ) is conducting a cultural resource study for the Duke Perry Street and Barret Avenue Project (Project). The Project involves the proposed construction of an industrial warehouse on approximately 7 acres of land in the City of Perris. The Project is subject to the California Environmental Quality Act (CEQA) and the City of Perris is the lead CEQA agency. As indicated on the attached map, the Project is located on the Perris, CA 7.5' USGS quadrangle map within Township 4S / Range 3W, Section 6, San Bernardino Baseline and Meridian (S.B.B.M.).

The archaeological literature and records search conducted at the Eastern Information Center housed at the University of California, Riverside, indicates that 43 cultural resources studies have been conducted within a one-mile radius of the Project area. Five of these studies involved the Project area. Fifteen cultural resource sites have been recorded within a one-mile radius of the Project area. None of these resources are documented within the Project area. Æ was contracted to perform an archaeological survey of the Project area. The survey was completed on October 31, 2018. Transects spacing ranged from 10 to 15 meters. No cultural resources were observed during the survey.

As part of the cultural resource assessment of the Project area, Æ requested a search of the *Sacred Lands File* by the Native American Heritage Commission (NAHC) on October 1, 2018. The NAHC responded on October 8, 2018 noting that *Sacred Lands File* search was completed with negative results. Should your records show that cultural properties exist within or near the Project area shown on the enclosed map, or if you have any concerns regarding Native American issues related to the overall Project, please contact me at (951) 766-2000 or via letter expressing your concerns. You may also e-mail me at [amiller@appliedearthworks.com](mailto:amiller@appliedearthworks.com). If I do not hear from you within the next two weeks, I will contact you with a follow-up phone call or email.

Please be aware that your comments and concerns are very important to us, as well as to the successful completion of this Project. I look forward to hearing from you in the near future. Thank you, in advance, for taking the time to review this request.

Respectfully yours,



Andrew D. Miller, MA  
Associate Archaeologist  
Applied EarthWorks, Inc.



Andrew Miller &lt;amiller@appliedearthworks.com&gt;

---

## Cultural Resource Investigation for the Duke Perry & Barret Project

---

**Steven Estrada** <SEstrada@santarosacahuilla-nsn.gov>

Tue, Nov 6, 2018 at 5:59 PM

To: Andrew Miller &lt;amiller@appliedearthworks.com&gt;

Cc: Joan George &lt;jgeorge@appliedearthworks.com&gt;, Joseph Ontiveros &lt;jontiveros@soboba-nsn.gov&gt;

Thank you. We defer further consultation and monitoring to the Soboba Band of Luiseño Indians.

---

**From:** Andrew Miller <amiller@appliedearthworks.com>**Date:** Thursday, November 1, 2018 at 2:43 PM**To:** Steven Estrada <SEstrada@santarosacahuilla-nsn.gov>**Cc:** Joan George <jgeorge@appliedearthworks.com>**Subject:** Cultural Resource Investigation for the Duke Perry & Barret Project

Dear Chairperson Estrada:

On behalf of Albert A. Webb Associates, Applied EarthWorks, Inc. (Æ) is conducting a cultural resource study for the Duke Perry Street and Barret Avenue Project (Project). The Project involves the proposed construction of an industrial warehouse on approximately 7 acres of land in the City of Perris.

The archaeological literature and records search conducted at the Eastern Information Center housed at the University of California, Riverside, indicates that fifteen cultural resource sites have been recorded within a one-mile radius of the Project area. None of these resources are documented within the Project area. Æ was contracted to perform an archaeological survey of the Project area. The survey was completed on October 31, 2018. No cultural resources were observed during the survey.

As part of the cultural resource assessment of the Project area, Æ requested a search of the Sacred Lands File by the Native American Heritage Commission (NAHC) on October 1, 2018. The NAHC responded on October 8, 2018 noting that Sacred Lands File search was completed with negative results.

Should your records show that cultural properties exist within or near the Project area shown on the enclosed map, or if you have any concerns regarding Native American issues related to the overall Project, please contact me at (951) 766-2000 or via letter expressing your concerns. You may also e-mail me at [amiller@appliedearthworks.com](mailto:amiller@appliedearthworks.com). If I do not hear from you within the next two weeks, I will contact you with a follow-up phone call or email.

Please be aware that your comments and concerns are very important to us, as well as to the successful completion of this Project. I look forward to hearing from you in the near future. Thank you, in advance, for taking the time to review this request.

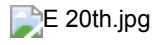
Many thanks,

--

**Andrew D Miller, M.A. | Applied EarthWorks, Inc.**

**Associate Archaeologist**

3350 E Florida Ave. suite H



Hemet, CA 92544

951-766-2000 X11

office

[www.appliedearthworks.com](http://www.appliedearthworks.com)



Andrew Miller <amiller@appliedearthworks.com>

---

## Cultural Resource Investigation for the Duke Perry & Barret Project-Follow up

---

**Joyce Perry** <kaamalam@gmail.com>  
To: amiller@appliedearthworks.com  
Cc: jgeorge@appliedearthworks.com

Thu, Nov 15, 2018 at 11:28 AM

Good Afernoon Mr. Miller,

On behalf of the Juaneno Band of Mission Indians, Acjachemen Nation we will yield our comments to the Tribes of the area. This is not our territory. Thank You,.

Húu'uni 'óomaqati yáamaqati.

Teach peace

Joyce Stanfield Perry

Payomkawichum Kaamalam - President

Juaneño Band of Mission Indians, Acjachemen Nation

Tribal Manager, Cultural Resource Director

[Quoted text hidden]





Andrew Miller &lt;amiller@appliedearthworks.com&gt;

---

**Cultural Resource Assessment for the Duke Perry Street and Barret Avenue Project**

1 message

---

**Cultural Department** <culturaldirector@cahuilla.net>  
To: "amiller@appliedearthworks.com" <amiller@appliedearthworks.com>  
Cc: anthony madrigal <anthonymad2002@gmail.com>

Tue, Nov 20, 2018 at 10:53 AM

Dear Mr. Miller,

The Cahuilla Band of Indians received your letter on November 1, 2018 regarding the Duke Perry Street and Barret Avenue Project in the City of Perris, Riverside County, Ca. The Cahuilla band does not have knowledge of any cultural resources/sites within the project area. Although this project is outside the Cahuilla reservation boundaries, it is within the Cahuilla traditional land use area according to the map provided and our map also. We believe the possibility of cultural resources being discovered during construction and request tribal monitors to be present during all ground disturbing activities and to be notified of all updates and/or changes with the project moving forward. We appreciate your help in preserving Tribal Cultural Resources in your project.

Respectfully,

BobbyRay Esparza  
Cultural Coordinator  
Cahuilla Band of Indians  
Cell: (760)423-2773  
Office: (951)763-5549  
Fax:(951)763-2808