

# Parking Demand Summary

## Youth Soccer Tournament

Project: 3 Full Size U18 Artificial Turf Soccer Fields (Can be used as 6 total U8-U11 Soccer Fields)  
2 U8-U11 Artificial Turf Soccer Fields

Assumptions: 12 Players Per Team    6 Vehicles Per Team    2 Handicap Spaces Per Field

Calculation:

Weekday PM Practice Demand (1 1/2 Hour Practice Intervals)	Number of Spaces
Maximum 14 Teams on the Fields at One Time	
16 Teams X 6 Vehicles Per Team =	96
2 Handicap Spaces Per Field =	32
4 Vehicles Per Team (Coaches/Equipment/Helpers) =	64

**Total Peak Parking Demand For Weekday PM Practice:** **192**  
(If all fields are used at once)

### Weekend League/Tournament Demand (2 Hour Game Intervals)

Full Size Field Use (3 Fields U12 - U18)	Number of Spaces
Maximum 6 Teams on Fields at One Time	
6 teams X 6 Vehicles Per Team =	36
2 Handicap Spaces Per Field =	6
20 Vehicles Per Field (Coaches, Officials, Additional Spectators) =	60
2 Vendors Per Field =	6

**Total Parking Demand Tournament Full Size Field Use = 108**

Half Size Field Use (8 Fields U5 - U11)	Number of Spaces
16 Teams X 6 Vehicles Per Team =	96
2 Handicap Spaces Per Field =	16
10 Vehicles Per Field (Coaches, Officials, Additional Spectators) =	80
2 Vendors Per Field =	16

**Total Parking Demand Tournament Half Size Field Use = 208**

**Current Option contains 270 Stalls and Handicap 33    Total 303**

### Comments

(ITE Trip Generation Handbook 9th Edition)  
(Code 488 pg. 900)

(Assumes half parents drop off and half stay)

(Assumes half parents drop off and half stay)  
(Assumes 36 Designated Handicap Spaces at All Times)

(Assumes half parents drop off and half stay)  
(Assumes 36 Designated Handicap Spaces at All Times)

(Assumes 2 Vendors Per Full Size Field)

### FEATURE LEGEND: (X)

1. (P) 5' Wide concrete walk at parkway
2. (E) Concrete curb and gutter
3. (P) 6" Concrete curb and 18" gutter
4. (P) Landscape median
5. (P) Landscape parkway
6. (P) 42" High 3 rail PVC fence
7. (P) Signage for Woolly Star and Habitat
8. (E) 8' High block wall at City yard
9. (P) 8' High split face block wall
10. (P) 8' High x 30" sq. split face pilaster
11. (P) 6" Concrete parking lot curb
12. (P) Pours concrete at overflow parking
13. (P) Intersection Signage
14. (P) Vehicular barrier gate
15. (P) Trash enclosure
16. (E) Power Pole - protect in place
17. (E) Guy wire to power pole
18. (P) Curb drainage in-let - per civil engineer
19. (P) 3 Row bleacher with shade canopy
20. (P) Musco LED sports field light standard
21. (P) Clean fill import soil - see section A-A
22. (P) 8' Wide concrete walkway paving
23. (P) Asphalt paving - per civil engineer
24. (P) Parking lot light standard
25. (P) Enhanced concrete paving with 24" wide concrete banding
26. (P) Handicap ramp
27. (P) Shade shelter
28. (P) 6" concrete curb at handicap stalls back of walk
29. HDPE drainage pipe - per civil engineer
30. (P) Trash receptacle
31. (P) 1' to 10' High split face retaining wall
32. (P) 8' High black vinyl chain link fence
33. (P) 8' High black vinyl chain link fence with 20' high black netting
34. (P) 6" Wide x 18" deep concrete curb at synthetic turf
35. (P) Aluminum players bench
36. (P) 3" Decomposed granite (D.G.) with aluminum edging
37. (P) Walkway light standard
38. Not Used
39. (P) 6" Wide x 8" deep concrete curb at natural turf
40. (P) Pours pavers with 24" wide concrete banding
41. (P) Aluminum edging at D.G. paving
42. Not Used
43. (P) 18" Concrete gutter
44. (P) Overland open channel with steel plate
45. (P) 12' Wide open rip rap channel set in concrete motor
46. (P) Detention basin - see section B-B
47. (P) Power line easement
48. (P) Rip rap water suppression set in motor
49. (P) Concrete Head wall
50. (P) Police substation within concession/restroom facility

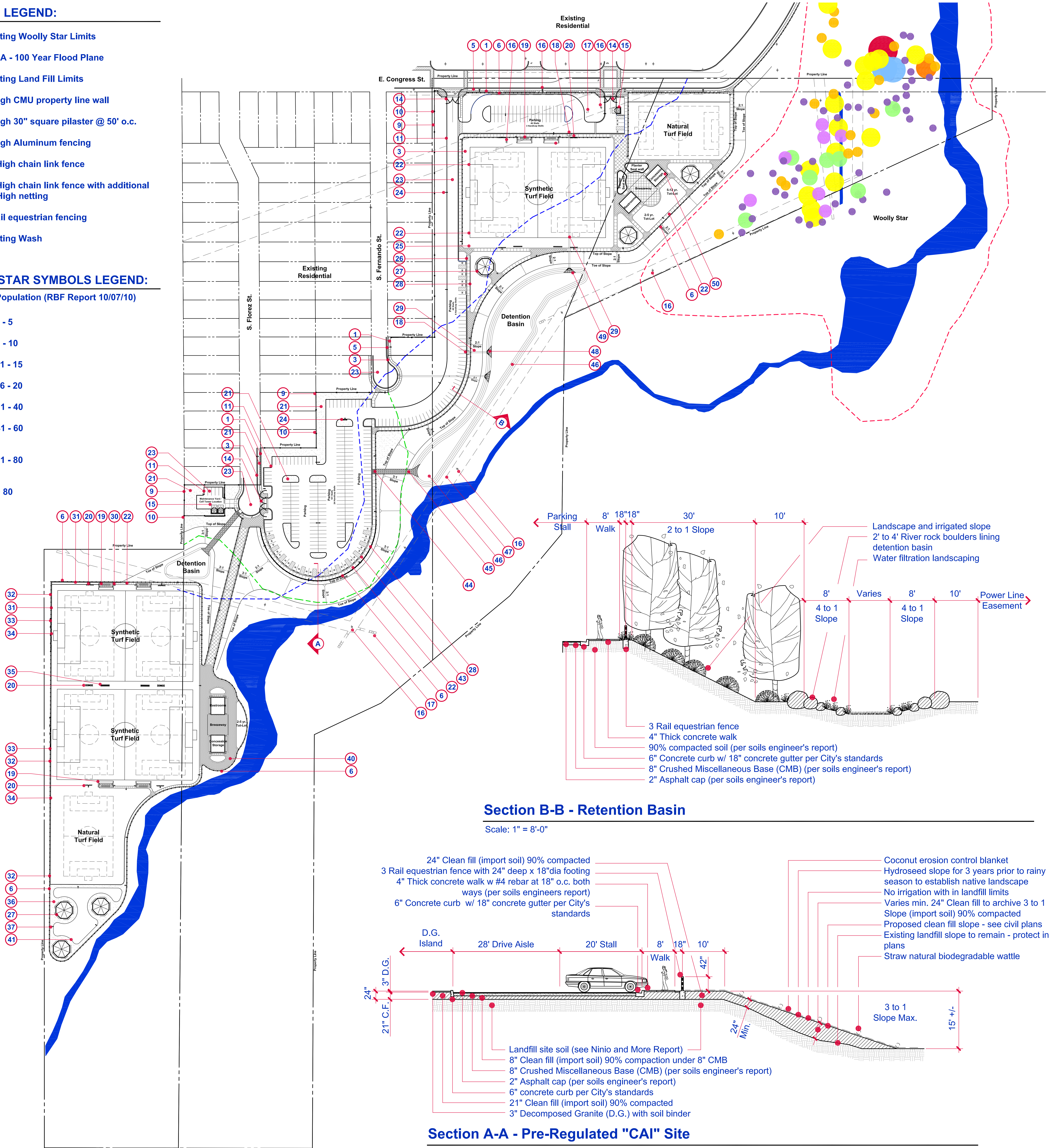
### SYMBOLS LEGEND:

- - - Existing Woolly Star Limits
- - - FEMA - 100 Year Flood Plane
- - - Existing Land Fill Limits
- 8' High CMU property line wall
- 8' High 30" square pilaster @ 50' o.c.
- 8' High Aluminum fencing
- 10' High chain link fence
- 10' High chain link fence with additional 20' High netting
- 3 Rail equestrian fencing
- Existing Wash

### WOOLLY STAR SYMBOLS LEGEND:

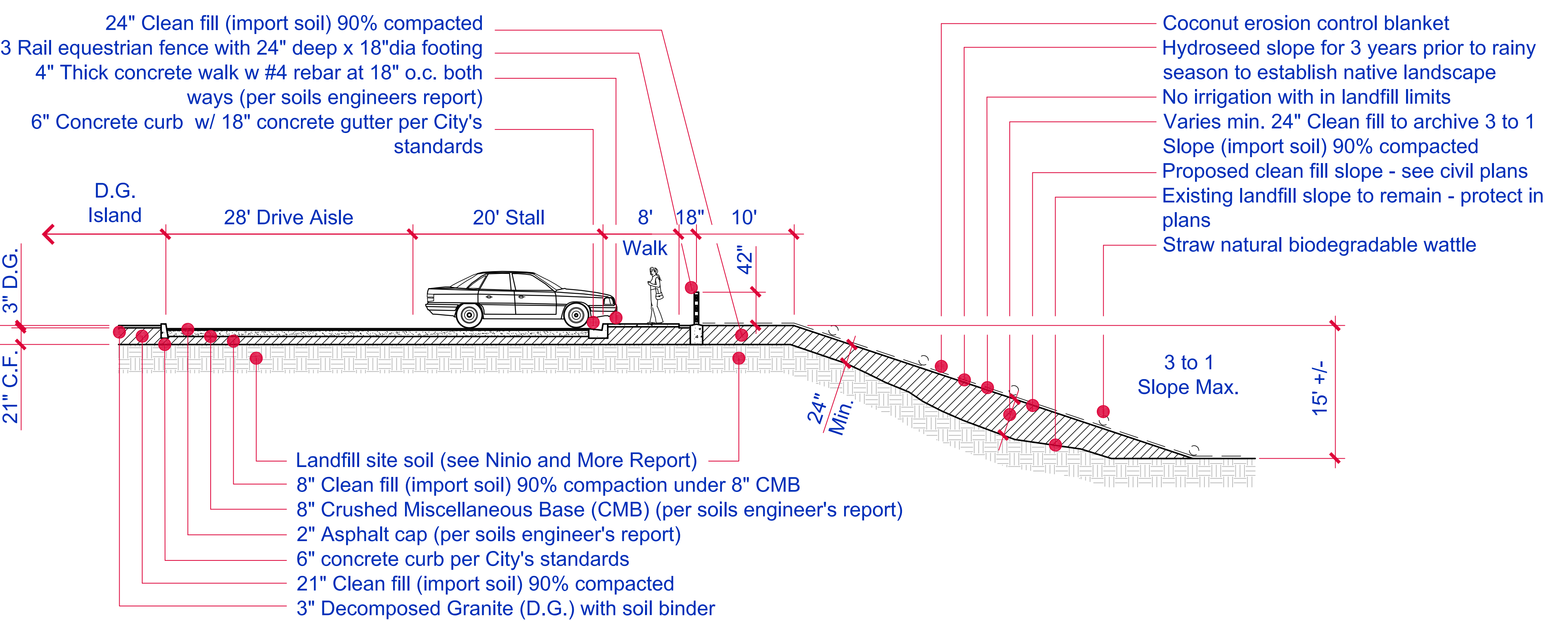
Woolly Star Population (RBF Report 10/07/10)  
Total Plants

- 1 - 5
- 6 - 10
- 11 - 15
- 16 - 20
- 21 - 40
- 41 - 60
- 61 - 80
- > 80



### Section B-B - Retention Basin

Scale: 1" = 8'-0"

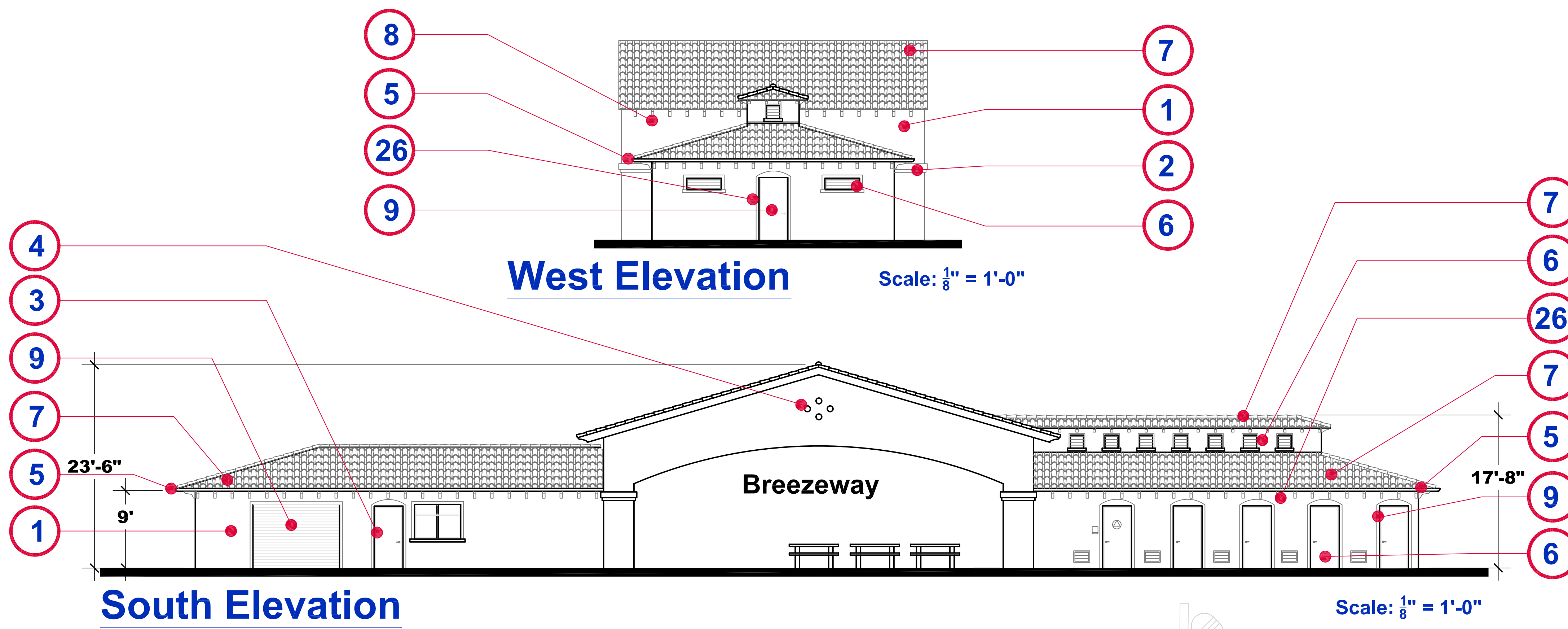


### Section A-A - Pre-Regulated 'CAI' Site

Scale: 1" = 8'-0"







**Feature Legend: (X)**

1. Mission plaster finish over CMU
2. Pilaster trim with plaster finish
3. Steel roll-up service door
4. Clay vent pipes
5. Sheet metal gutter with downspout
6. Steel louver vents
7. Clay barrel tile roofing
8. Rafter tail
9. Flush metal door
10. Glass window in hollow metal frame
11. Advertising kiosk on Building
12. Parking lot light standard (single)
13. Flag poles (3 total)
14. Sports field light standard
15. Pedestrian walkway light standard
16. 3 Row Aluminum Bleachers with Shade Canopy

