

Notes

199752A

Lighting System

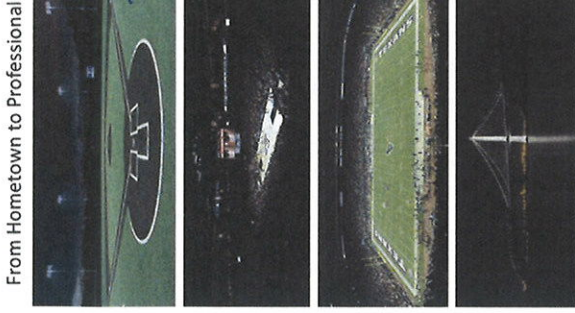
Pole / Fixture Summary						
Pole ID	Pole Height	Mtg Height	Fixture Qty	Luminaire Type	Load	Circuit
S1-S4	80'	60'	2	TLC-LED-1200	2.34 kW	A
SS-S8	70'	70'	5	TLC-LED-1500	7.15 kW	B
SS-S10	70'	70'	4	TLC-LED-1500	5.72 kW	C
S11	80'	80'	5	TLC-LED-1500	7.15 kW	C
			5	TLC-LED-1500	7.15 kW	D
			1	TLC-LED-800	0.89 kW	D
			1	TLC-LED-800	0.89 kW	D
			5	TLC-LED-1500	7.15 kW	C
			5	TLC-LED-1500	7.15 kW	C
			1	TLC-LED-800	0.89 kW	D
			1	TLC-LED-800	0.89 kW	D
			5	TLC-LED-1200	5.85 kW	E
			4	TLC-LED-1500	5.72 kW	D
			4	TLC-LED-1500	5.72 kW	D
			5	TLC-LED-1200	5.85 kW	E
<b>15</b>			<b>78</b>		<b>194.70 kW</b>	

Circuit Summary			
Circuit	Description	Load	Fixture Qty
A	1ASoccer	9.36 kW	6
B	2ASoccer	28.6 kW	20
C	3ASoccer	27.52 kW	20
D	4ASoccer	27.52 kW	20
E	5ASoccer	11.7 kW	10

Fixture Type Summary						
Type	Source	Wattage	Lumens	L80	L70	Quantity
TLC-LED-1500	LED 5700K - 75 CRI	1430W	160,000	>81,000	>81,000	56
TLC-LED-1200	LED 5700K - 75 CRI	1170W	136,000	>81,000	>81,000	18
TLC-LED-900	LED 5700K - 75 CRI	890W	89,600	>81,000	>81,000	4

Light Level Summary

Calculation Grid Summary						
Grid Name	Calculation Metric	Avg Illumination	Min Illumination	Max Illumination	Avg/Min	Fixture Qty
1ASoccer	Horizontal Illuminance	33.5	22	52	2.40	1.52
2ASoccer	Horizontal Illuminance	34.2	22	43	1.95	1.56
3ASoccer	Horizontal Illuminance	32.1	23	42	1.80	1.39
4ASoccer	Horizontal Illuminance	31.7	23	42	1.84	1.38
5ASoccer	Horizontal Illuminance	36.3	27	49	1.85	1.35
Far side E. Congress St. Spill	Horizontal	0.01	0	0.05	7064.40	A,B
Far side E. Congress St. Spill	Max Vertical Illuminance Metric	0.03	0	0.11	2468.17	A,B
Property Spill Line	Horizontal	0.13	0	1.19	0.00	A,B,C,D,E
Property Spill Line	Max Vertical Illuminance Metric	0.26	0	2.20	0.00	A,B,C,D,E



From Hometown to Professional



We Make It Happen.

Not to be reproduced in whole or part without the written consent of Musco Sports Lighting, LLC ©1981-2019 Musco Sports Lighting, LLC

PROJECT SUMMARY

199752A

**EQUIPMENT LIST FOR AREAS SHOWN**

QTY	LOCATION	SIZE	GRADE	ELEVATION	MAINTENANCE POINT	LUMINAIRE	THIS POS	OTHER POS
4	S1-S4	60"	60"		2	TLC-LED-1200	8	0
TOTALS							8	0

**POLE HEIGHT**

**FIXTURE TYPE/QTY**

**GRID SUMMARY**

Name: JASoccer  
 Size: 195' x 120'  
 Spacing: 10.0' x 10.0'  
 Height: 3.0' above grade

**ILLUMINATION SUMMARY**

MAINTAINED HORIZONTAL FOOTCANDLES:

Entire Grid

Guaranteed Average: 39  
 Scan Average: 33.32  
 Maximum: 32  
 Minimum: 22  
 Avg / Min: 1.35  
 Guaranteed Max / Min: 3.32  
 Max / Min: 2.40  
 UG (adjacent pts): 1.81  
 CU: 0.76  
 No. of Points: 240

LUMINAIRE INFORMATION

Color / CRI: 5700K - 75 CRI  
 Luminaire Output: 136,000 lumens  
 No. of Luminaires: 8  
 Total Load: 9.36 kW

Luminaire Type	150 hrs	180 hrs	L70 hrs	L70 hrs
TLC-LED-1200	>81,000	>81,000	>81,000	>81,000

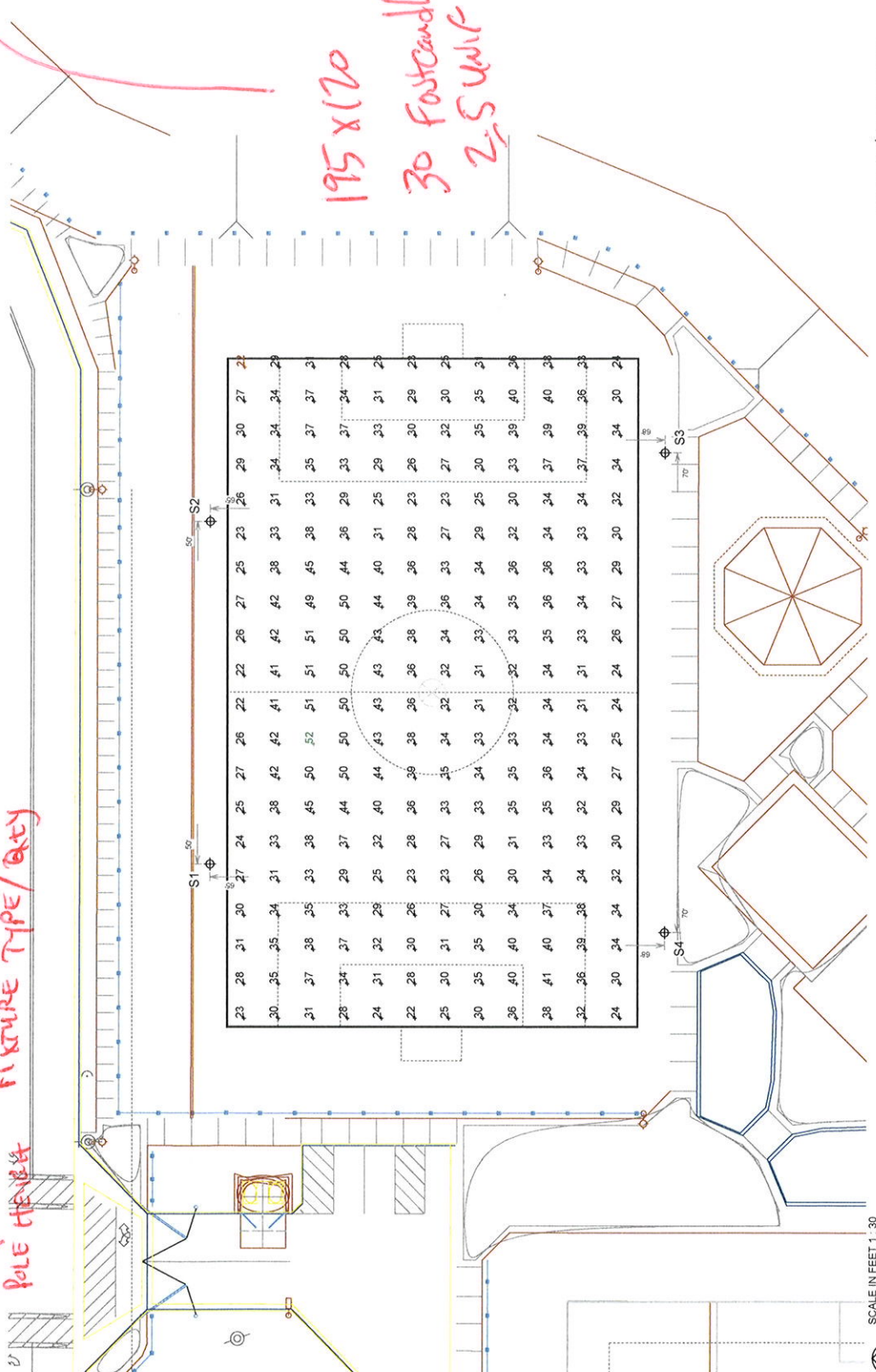
Reported per TM 21.11. See luminaire data sheet for details.

**Guaranteed Performance:** The ILLUMINATION described above is guaranteed per your Musco Warranty document and includes a 0.95 dirt depreciation factor.

**Field Measurements:** Individual field measurements may vary from computer-calculated predictions and should be taken in accordance with IESNA RP-6-15.

**Electrical System Requirements:** Refer to Amperage Draw Chart and/or the "Musco Control System Summary" for electrical sizing.

**Installation Requirements:** Results assume ± 3% nominal voltage at line side of the driver and structures located within 3 feet (1m) of design locations.



Pole location(s) dimensions are relative to 0.0 reference point(s)

SCALE IN FEET 1:30

ENGINEERED DESIGN By: Isaac Sanders • File #199752A • 14-Jun-19



**We Make It Happen.**

Not to be reproduced in whole or part without the written consent of Musco Sports Lighting, LLC ©1981, 2019 Musco Sports Lighting, LLC

**ILLUMINATION SUMMARY**

199752A

**EQUIPMENT LIST FOR AREAS SHOWN**

QTY	LOCATION	SIZE	GRADE ELEVATION	Luminaires		
				MAINTENANCE HEIGHT	ONLY SEE	OTHER
4	S5-S8	70"	20'	20	0	0
4			TOTALS			

*33x 220*

*30 ft*

*fixture type*

*height*

**GRID SUMMARY**  
 Name: 2A Soccer  
 Size: 330' x 220'  
 Spacing: 30.0' x 30.0'  
 Height: 3.0' above grade

**ILLUMINATION SUMMARY**  
 MAINTAINED HORIZONTAL FOOT CANDLES  
 Entre Grid

**Guaranteed Average:** 30  
 Scan Average: 34.23  
 Maximum: 43  
 Minimum: 22  
 Avg / Min: 1.55

**Guaranteed Max / Min:** 2  
 Max / Min: 1.98  
 US (adjacent): 0.86  
 No. of Points: 88

**LUMINAIRE INFORMATION**  
 Color / CRI: 5700K - 75 CRI  
 Luminaire Output: 160,000 lumens  
 No. of Luminaires: 20  
 Total Load: 28.6 kW

Luminaire Type	L50 hrs	L80 hrs	L70 hrs
TLC LED-1500	>81,000	>81,000	>81,000

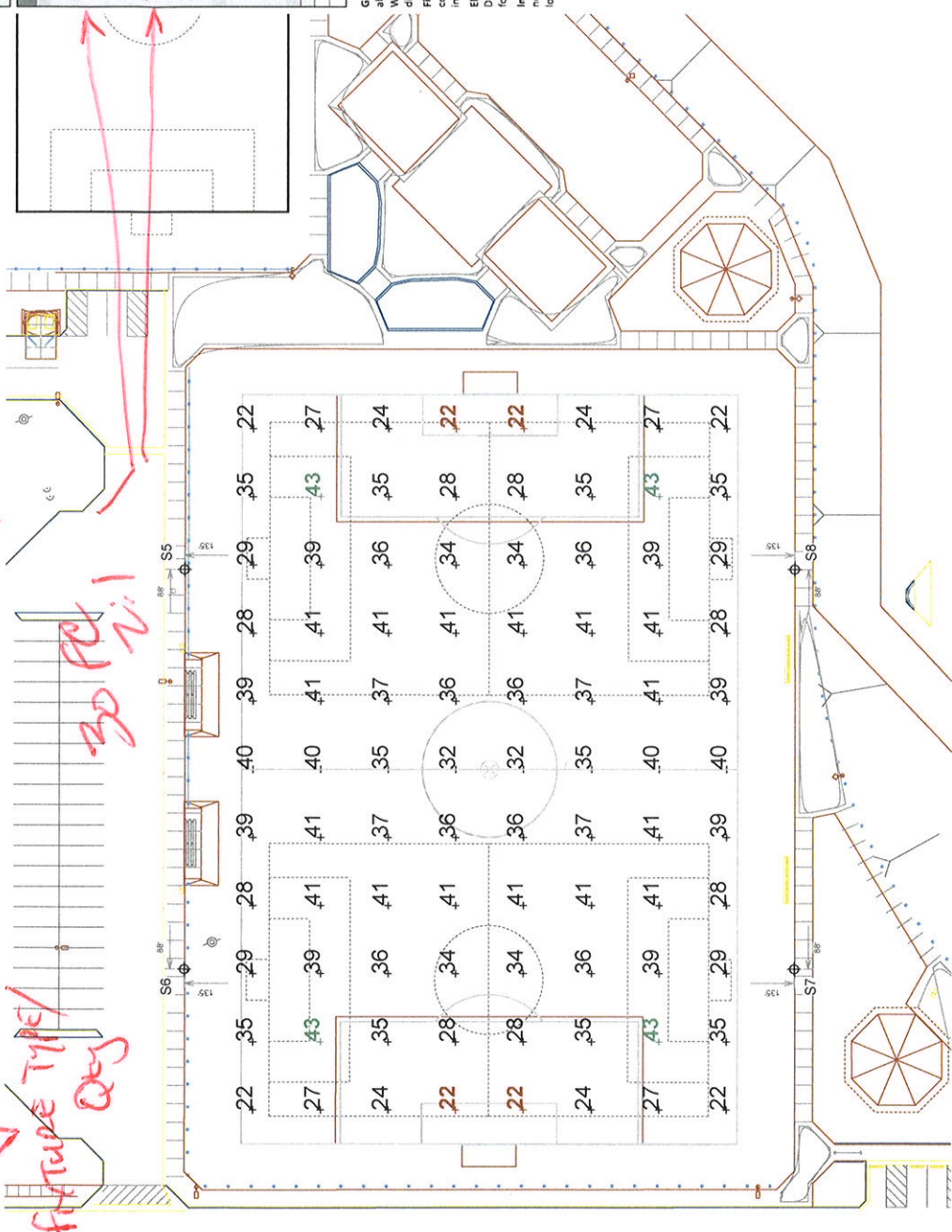
Reported per IESNA RP-6-15. See luminaire data sheet for details.

**Guaranteed Performance:** The ILLUMINATION described above is guaranteed per your Musco Warranty document and includes a 0.95 dirt depreciation factor.

**Field Measurements:** Individual field measurements may vary from computer-calculated predictions and should be taken in accordance with IESNA RP-6-15.

**Electrical System Requirements:** Refer to Ampacage Draw Chart and/or the "Musco Control System Summary" for electrical sizing.

**Installation Requirements:** Results assume a 3% nominal voltage at line side of the driver and structures located within 9 feet (3 m) of design locations.



Pole location(s) Ⓢ dimensions are relative to O.D reference point(s) Ⓢ

SCALE IN FEET 1:50  
 0 50 100

ENGINEERED DESIGN By: Isaac Sanders • File #199752A • 14-Jun-19



**We Make it Happen.**

Not to be reproduced in whole or part without the written consent of Musco Sports Lighting, LLC. ©1981-2019 Musco Sports Lighting, LLC.

**ILLUMINATION SUMMARY**

199752A

**EQUIPMENT LIST FOR AREAS SHOWN**

QTY	LOCATION	POLE	SIZE	GRADE	ELEVATION	WARNING	LUMINAIRE	DUTY	THIS	OTHER
									POLE	GRID
4	S1-S4	60'					TIC-LED-200		5	0
4	S5-S8	70'					TIC-LED-1500		5	0
8							TOTALS		28	28
									0	0

**GRID SUMMARY**

Name: Far side E. Congress St. Spill  
 Spacing: 30.0'  
 Height: 3.0' above grade

**ILLUMINATION SUMMARY**

Entire Grid  
 Scan Average: 0.0110  
 Maximum: 0.05  
 Minimum: 0.00  
 No. of Points: 29

**LUMINAIRE INFORMATION**

Color / CRI: 5700K - 75 CRI  
 Luminaire Output: 160,000 / 136,000 lumens  
 No. of Luminaires: 28  
 Total Load: 37.96 kW

Luminaire Type	150 hrs	160 hrs	170 hrs
TIC-LED-1500	>81,000	>81,000	>81,000
TIC-LED-1200	>81,000	>81,000	>81,000

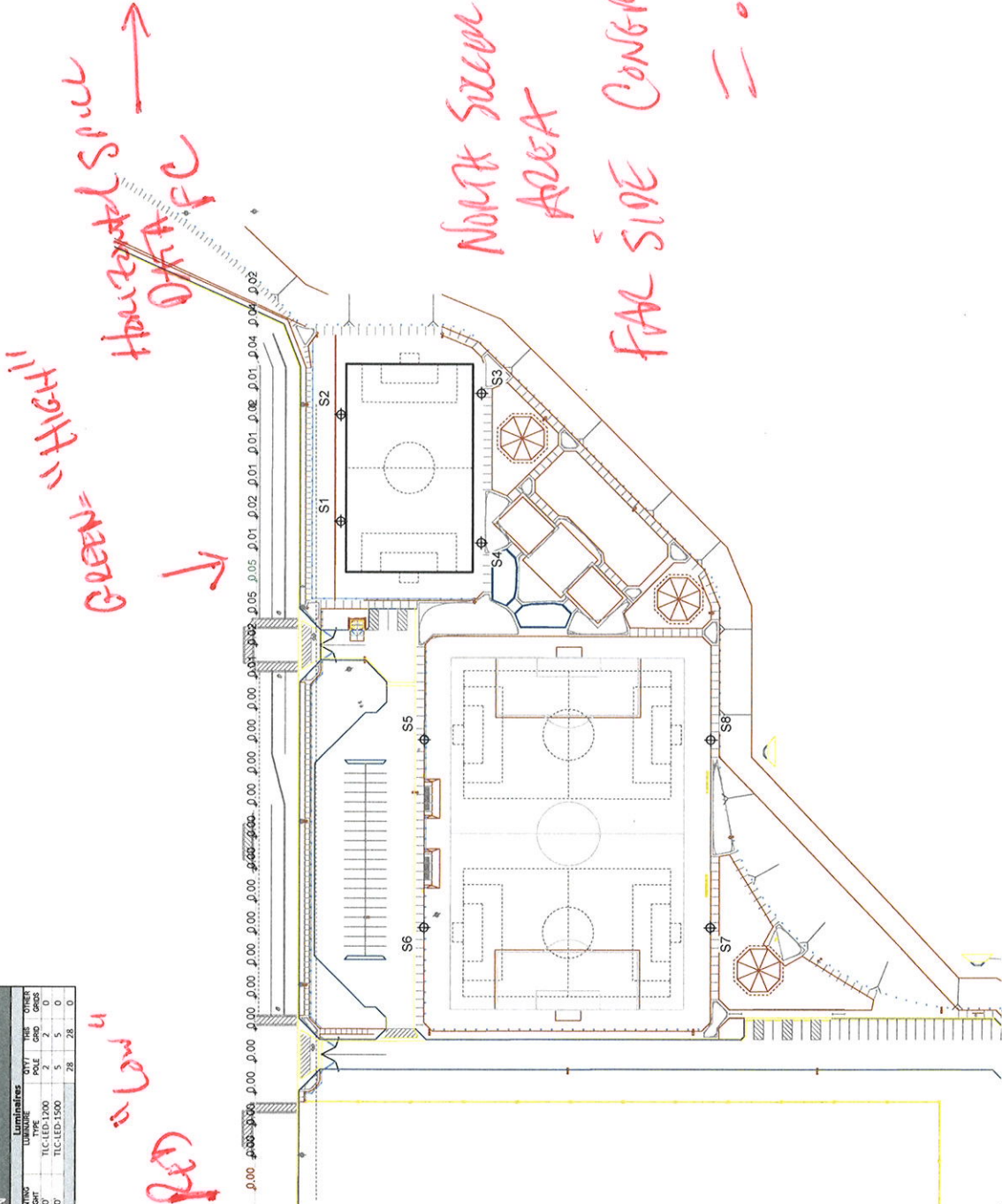
Payment per LV 7.1.1 - See luminaire data sheet for details.

**Guaranteed Performance:** The ILLUMINATION described above is guaranteed per your Musco Warranty document.

**Field Measurements:** Individual field measurements may vary from computer-calculated readings and should be taken in accordance with IESNA RP-6-15.

**Electrical System Requirements:** Refer to Amperage Draw Chart and/or the "Musco Control System Summary" for electrical sizing.

**Installation Requirements:** Results assume ± 3% nominal voltage at line side of the driver and structures located within 3 feet (1m) of design locations.



Pole location(s) with dimensions are relative to D.O. reference point(s)



**We Make It Happen**

Not to be reproduced without the written consent of Musco Sports Lighting, LLC © 1987, 2019 Musco Sports Lighting, LLC

ENGINEERED DESIGN By: Isaac Sanders • File #199752A • 14-Jun-19

**ILLUMINATION SUMMARY**

199752A

**EQUIPMENT LIST FOR AREAS SHOWN**

CITY	LOCATION	SIZE	GRADE	ELEVATION	MOUNTING HEIGHT	Luminaires		
						QUANTITY	THIS GRID	OTHER GRIDS
4	S1-S4	60'			70'	TLC-LED-1500	5	0
4	S5-S8	70'			70'	TLC-LED-1500	5	0
8	TOTALS						28	28

**GRID SUMMARY**

Name: Far side E. Congress St. Spill  
 Spacing: 30.0'  
 Height: 3.0' above grade

**ILLUMINATION SUMMARY**  
 MAX VERTICAL FOOTCANDLES

Entire Grid  
 Scan Average: 0.0266  
 Maximum: 0.11  
 Minimum: 0.00  
 No. of Points: 29

**LUMINAIRE INFORMATION**

Color / CRI: 5700K - 75 CRI  
 Luminaire Output: 160,000 / 336,000 lumens  
 No. of Luminaires: 28  
 Total Load: 37.95 kW

Luminaire Type	150 hrs	180 hrs	170 hrs
TLC-LED-1500	>81,000	>81,000	>81,000
TLC-LED-1200	>81,000	>81,000	>81,000

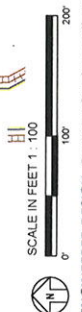
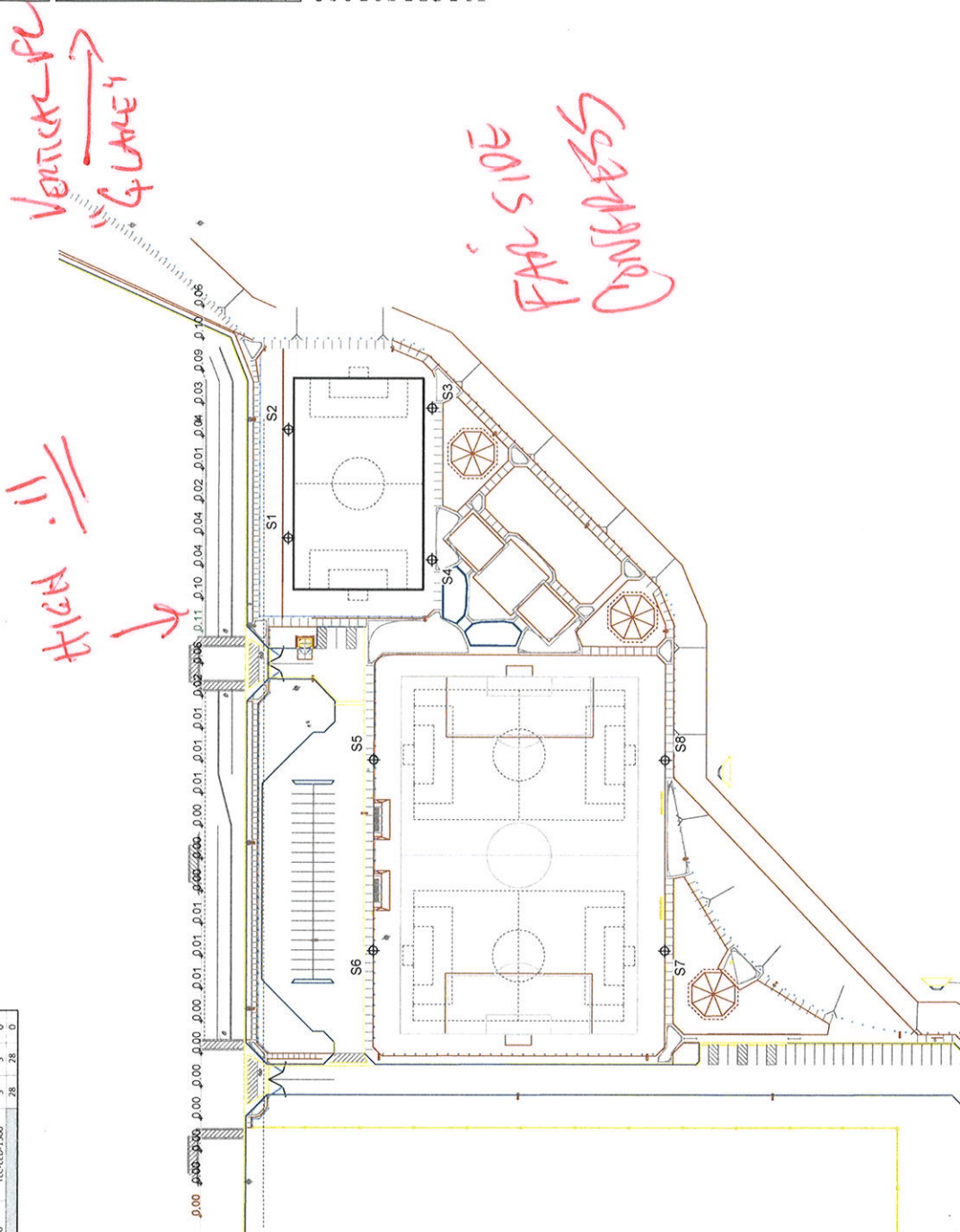
Reported per IESNA RP-6-15. See Appendix for further details.

**Guaranteed Performance:** The ILLUMINATION described above is guaranteed per your Musco Warranty document.

**Field Measurements:** Individual field measurements may vary from computer-calculated predictions and should be taken in accordance with IESNA RP-6-15.

**Electrical System Requirements:** Refer to Amperage Draw Chart and/or the "Musco Control System Summary" for electrical sizing.

**Installation Requirements:** Results assume ± 3% nominal voltage at line side of the driver and structures located within 3 feet (1m) of design locations.



We Make It Happen.

Not to be reproduced in whole or part without the written consent of Musco Sports Lighting, LLC ©1981-2019 Musco Sports Lighting, LLC.

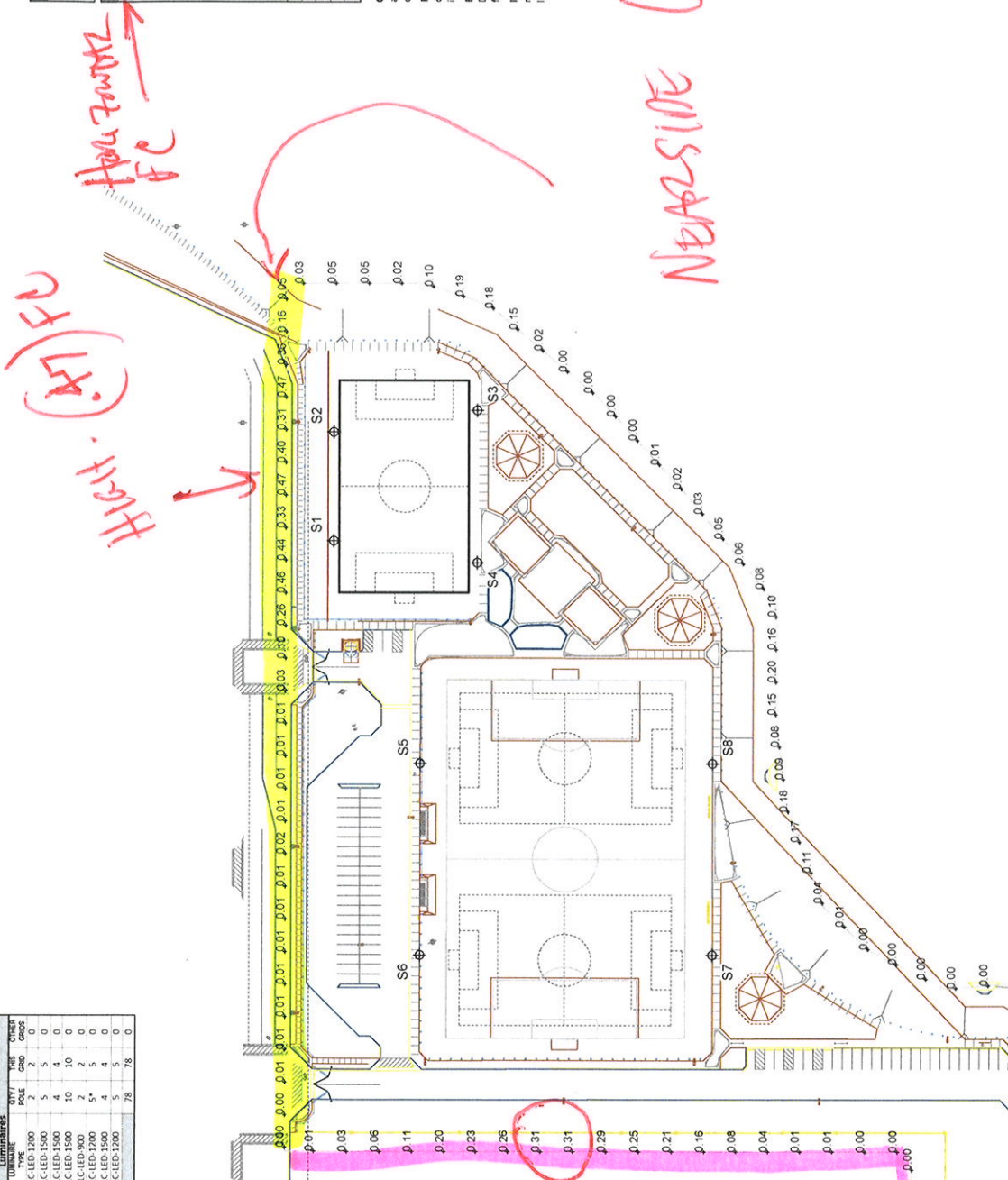
ILLUMINATION SUMMARY

199752A

**EQUIPMENT LIST FOR AREAS SHOWN**

QTY	LOCATION	SIZE	GRADE ELEVATION	WARNING HEIGHT	LUMINAIRE	DIST. TO POLE	THIS SIDE	OTHER SIDE
4	S1-S4	60"	-	70"	TLC-LED-1500	5'	5	0
3	S5-S8	70"	-	70"	TLC-LED-1500	4'	4	0
2	S9-S10, S14	80"	-	80"	TLC-LED-1500	10'	10	0
1	S11-S12	80"	-	80"	TLC-LED-900	2'	2	0
1	S13	70"	-	70"	TLC-LED-1500	5'	4	0
15	S15	60"	-	60"	TLC-LED-1200	5'	5	0
TOTALS:							78	78

\* This structure utilizes a back-to-back mounting configuration



**GRID SUMMARY**

Name: Property Spill Line  
 Spacing: 30.0'  
 Height: 3.0' above grade

**ILLUMINATION SUMMARY**

HORIZONTAL FOOTCANDLES

Scan Average: 0.1282  
 Maximum: 1.13  
 Minimum: 0.00  
 No. of Points: 739

LUMINAIRE INFORMATION

Color / CRI: 5700K - 75 CRI  
 Luminaire Output: 160,000 / 136,000 / 89,600 lumens  
 No. of Luminaires: 78  
 Total Load: 104.7 kW

Luminaire Type	150 hrs	180 hrs	170 hrs
TLC-LED-1500	>81,000	>81,000	>81,000
TLC-LED-1200	>81,000	>81,000	>81,000
TLC-LED-900	>81,000	>81,000	>81,000

Requested per IESNA E-11.1. See luminaire data sheet for details.

**Guaranteed Performance:** The ILLUMINATION described above is guaranteed per your Musco Warranty document.

**Field Measurements:** Individual field measurements may vary from computer-calculated predictions and should be taken in accordance with IESNA RP-6-13.

**Electrical System Requirements:** Refer to Amperage Draw Chart and/or the "Musco Control System Summary" for electrical string.

**Installation Requirements:** Results assume ± 3% nominal voltage at line side of the driver and structures located within 3 feet (1m) of design locations.



**We Make It Happen.**

Not to be reproduced without the written consent of Musco Sports Lighting, LLC. © 1981, 2015 Musco Sports Lighting, LLC.

Pole location(s) ± dimensions are relative to 0.0 reference point(s) ⊗



ENGINEERED DESIGN By: Isaac Sanders • File #199752A • 14-Jun-19

ILLUMINATION SUMMARY

199752A

**EQUIPMENT LIST FOR AREAS SHOWN**

QTY	LOCATION	SIZE	SPRINK	ELEVATION	MONITORING	LUMINAIRE	QTY / POLE	THIS OTHER	
15	S1-S4	60"	70"	70"	TIC-LED-1200	5	5	0	
4	S1-S4	60"	70"	70"	TIC-LED-1200	5	5	0	
4	S5-S8	70"	70"	70"	TIC-LED-1500	4	4	0	
3	S9-S10, S14	70"	70"	70"	TIC-LED-1500	4	4	0	
2	S11-S12	80"	80"	80"	TIC-LED-1500	2	2	0	
1	S13	70"	70"	70"	TIC-LED-1500	2	2	0	
1	S15	60"	70"	70"	TIC-LED-1200	5	5	0	
<b>TOTALS</b>							<b>78</b>	<b>78</b>	<b>0</b>

\* This structure utilizes a back-to-back mounting configuration.

**GRID SUMMARY**

Name: Property Spill Line  
Spacing: 30.0'  
Height: 3.0' above grade

**ILLUMINATION SUMMARY**  
MAX VERTICAL FOOTCANDLES

Entire Grid  
Scan Average: 0.2581  
Maximum: 2.20  
Minimum: 0.00  
No. of Points: 239

LUMINAIRE INFORMATION  
Color / CRI: 5700K - 75 CRI  
Luminaire Output: 160,000 / 136,000 / 89,600 lumens  
No. of Luminaires: 78  
Total Load: 104.7 kW

Luminaire Type	150 hrs	180 hrs	170 hrs
TIC-LED-1500	>81,000	>81,000	>81,000
TIC-LED-1200	>81,000	>81,000	>81,000
TIC-LED-900	>81,000	>81,000	>81,000

Referenced per: 199752-11, See luminaire schedule for details.

**Guaranteed Performance:** The ILLUMINATION described above is guaranteed per your Musco Warranty document.

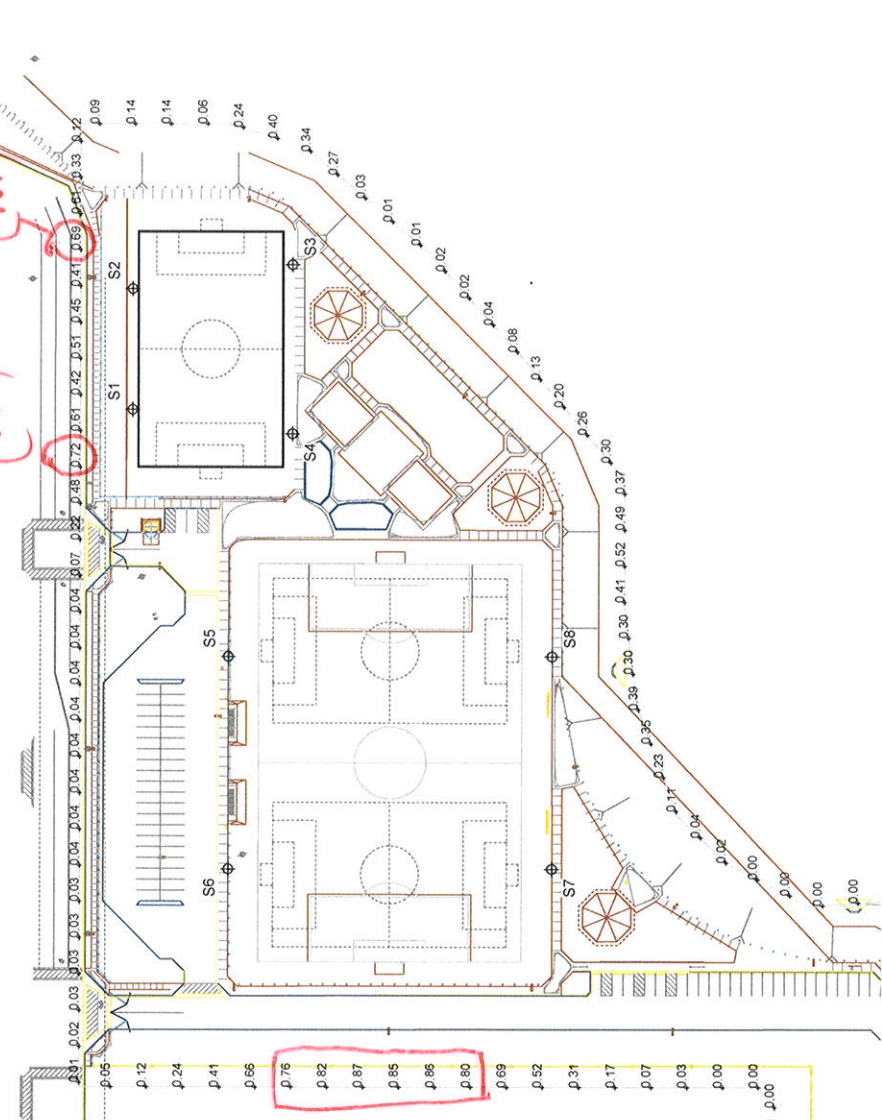
**Field Measurements:** Individual field measurements may vary from computer-calculated values and should be taken in accordance with IESNA RP-6-15.

**Electrical System Requirements:** Refer to Amperage Draw Chart and/or the "Musco Control System Summary" for electrical string.

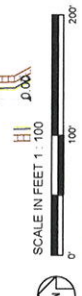
**Installation Requirements:** Results assume ± 3% nominal voltage at line side of the driver and structures located within 3 feet (1m) of design locations.

VEGETATE  
→

(276)  
(87)  
FC



Pole location(s) Ⓢ dimensions are relative to 0.0 reference point(s) ⊗



ENGINEERED DESIGN By: Isaac Sanders • File #199752A • 14-Jun-19



**We Make It Happen<sup>®</sup>**

Not to be reproduced without the written consent of Musco Sports Lighting, LLC. ©1987-2019 Musco Sports Lighting, LLC.

**ILLUMINATION SUMMARY**

199752A

**GRID SUMMARY**

Name: 3ASeccer  
 Size: 330' x 220'  
 Spacing: 30.0' x 30.0'  
 Height: 3.0' above grade

**ILLUMINATION SUMMARY**

MAINTAINED HORIZONTAL FOOT-CANDELES

Entire Grid

Guaranteed Average: 30  
 Scan Average: 32.05  
 Maximum: 42  
 Minimum: 23

Guaranteed Max / Min: 2  
 Avg / Min: 1.36  
 Max / Min: 1.80  
 UG (adjacent pos): 1.33  
 UG (adjacent neg): 0.33  
 No. of Points: 77

LUMINAIRE INFORMATION

Color / CRI: 5700K - 75 CRI  
 Luminaire Output: 89,600 / 160,000 lumens  
 No. of Luminaires: 20  
 Total Load: 27.52 kW

Lumen Maintenance

Luminaire Type	L90 hrs	L80 hrs	L70 hrs
TLC-LED-900	>81,000	>81,000	>81,000
TLC-LED-1500	>81,000	>81,000	>81,000

Reported per ILM 21.11. See luminaire data sheet for details.

**Guaranteed Performance:** The ILLUMINATION described above is guaranteed per your Musco Warranty document and includes a 0.95 dirt depreciation factor.

**Field Measurements:** Individual field measurements may vary from computer-calculated predictions and should be taken in accordance with IESNA RP-6-15.

**Electrical System Requirements:** Refer to Amperage Draw Chart and/or the "Musco Control System Summary" for electrical sizing.

**Installation Requirements:** Results assume ± 3% nominal voltage at line side of the driver and structures located within 3 feet (1m) of design locations.

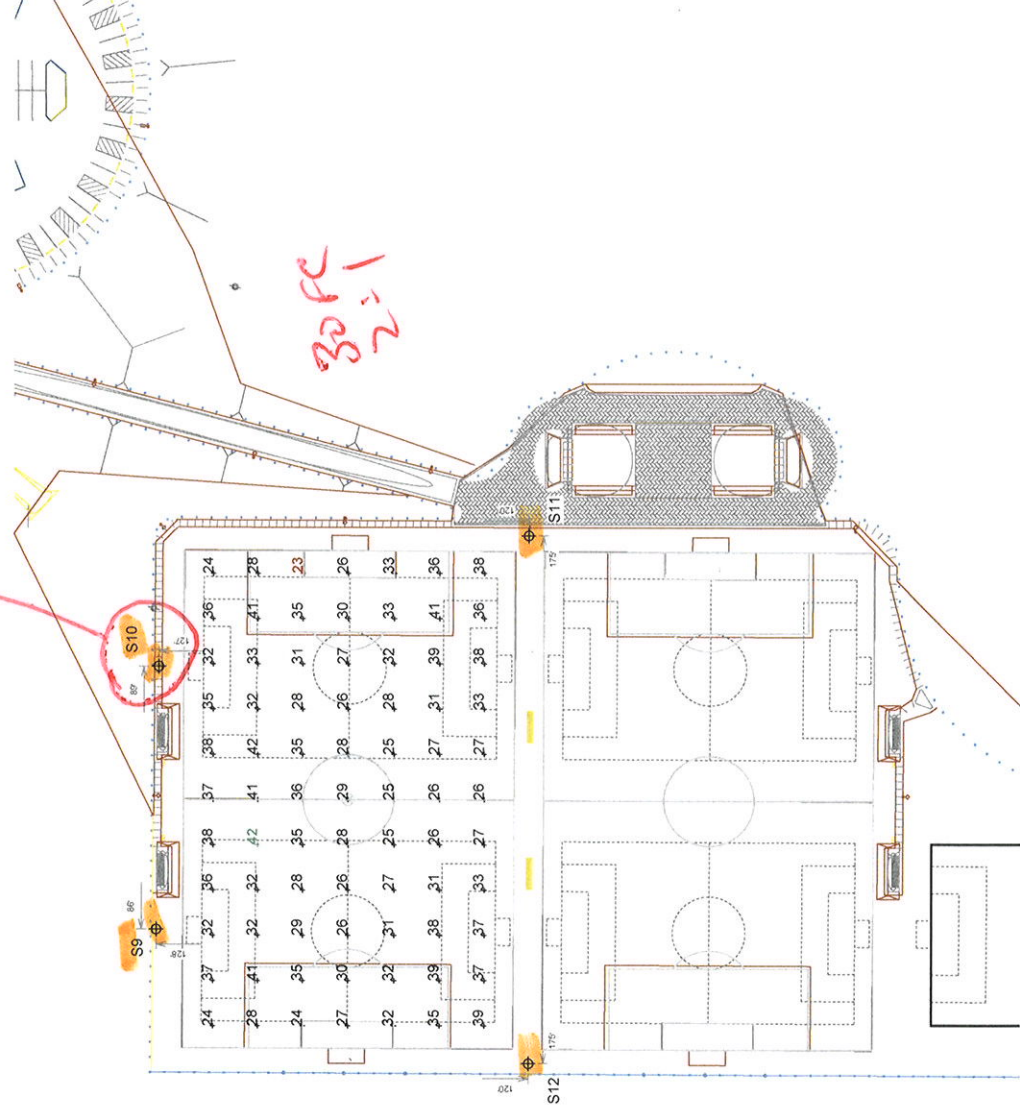


We Make It Happen.

Not to be reproduced without the written consent of Musco Sports Lighting, LLC © 1981, 2019 Musco Sports Lighting, LLC

ILLUMINATION SUMMARY

*Handwritten notes:*  
 OUT with more TRS  
 Enter on the side  
 30 ft  
 2:1



**EQUIPMENT LIST FOR AREAS SHOWN**

QTY	LOCATION	SIZE	GRADE ELEVATION	MOUNTING HEIGHT	Luminaires			THIS FILE	OTHER QTY
					TLC-LED-1500	TLC-LED-900	OTHER		
2	S9-S10	70'		80'	2	0	4	0	
2	S11-S12	80'		80'	2	0	1	1	
4	TOTALS				4	0	5	1	



ENGINEERED DESIGN By: Isaac Sanders • File #199752A • 14-Jun-19



199752A

**EQUIPMENT LIST FOR AREAS SHOWN**

QTY	LOCATION	SIZE	GRADE ELEVATION	MOUNTING HEIGHT	LUMINAIRE			THIS AND OTHER
					TLC-LED-1500	TLC-LED-900	TLC-LED-500	
2	S11-S12	80'		80'	2	1	1	5
1	S13	70'		70'	5*	0	5	0
1	S14	70'		70'	4	4	4	0
4			TOTALS		11	4	10	5

\* This structure utilizes a back-to-back mounting configuration

**GRID SUMMARY**

Name: 4ASecceer  
 Size: 33'0" x 22'0"  
 Spacing: 30.0' x 30.0'  
 Height: 3.0' above grade

**ILLUMINATION SUMMARY**

MAINTAINED HORIZONTAL FOOTCANDIES

Entire Grid

Guaranteed Average: 30  
 Scan Average: 31.67  
 Maximum: 42  
 Minimum: 23

Guaranteed Max / Min:  
 Avg / Min: 1.38  
 Max / Min: 1.86

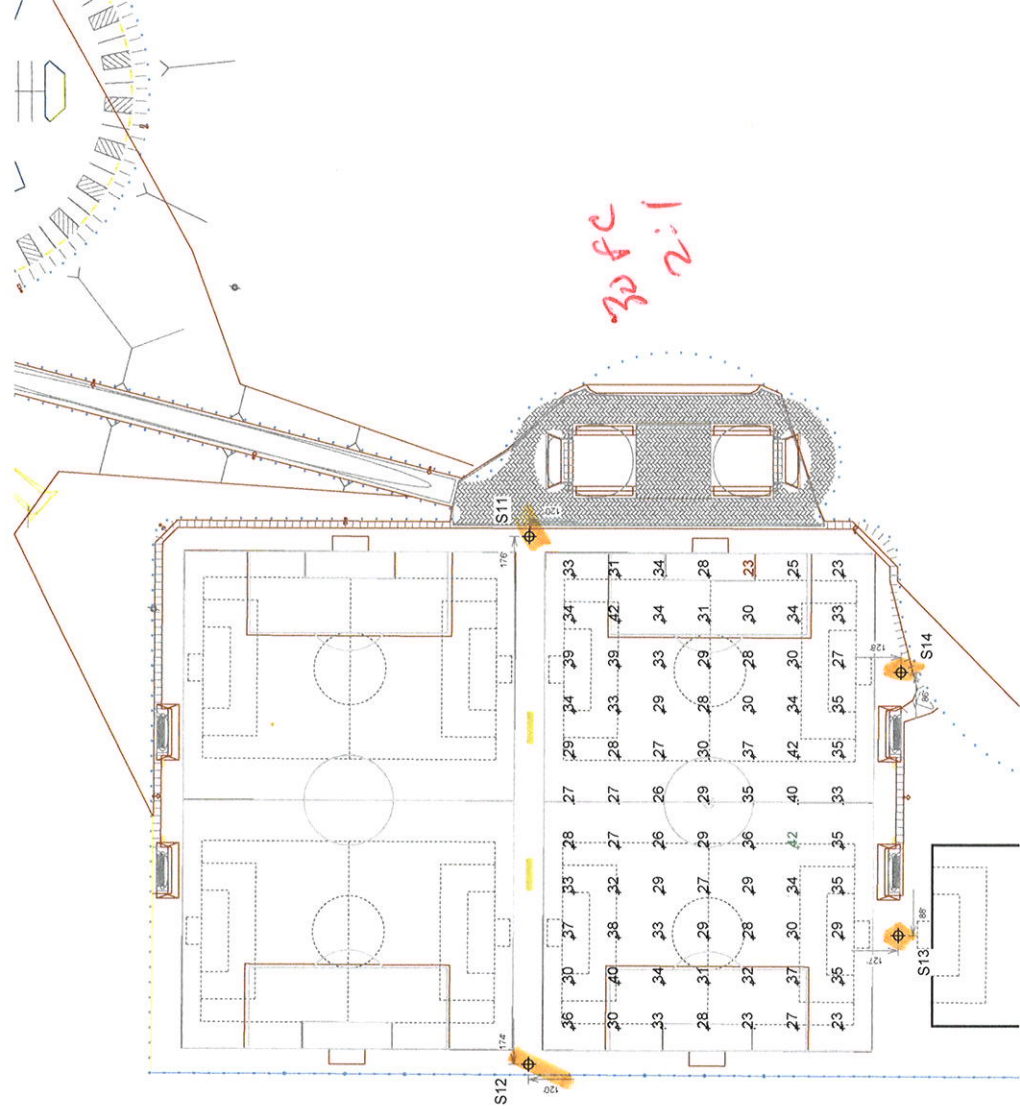
UG (adjacent to):  
 CU: 0.73  
 No. of Points: 77

LUMINAIRE INFORMATION

Color / CRI: 5700K - 75 CRI  
 Luminaire Output: 89,600 / 160,000 lumens  
 No. of Luminaires: 20  
 Total Load: 27.52 kW

Luminaire Type	150 hrs	180 hrs	L70 hrs
TLC-LED-900	>81,000	>81,000	>81,000
TLC-LED-1500	>81,000	>81,000	>81,000

Reported per ILM 71.11, See luminaire data sheet for details.



**Guaranteed Performance:** The ILLUMINATION described above is guaranteed per your Musco Warranty document and includes a 0.95 dirt depreciation factor.

**Field Measurements:** Individual field measurements may vary from computer-calculated predictions and should be taken in accordance with IESNA RP-6-15.

**Electrical System Requirements:** Refer to Amperage Draw Chart and/or the "Musco Control System Summary" for electrical sizing.

**Installation Requirements:** Results assume a 3% nominal voltage at line side of the driver and structures located within 3 feet (1m) of design locations.



**We Make It Happen.**

Not to be reproduced in whole or part without the written consent of Musco Sports Lighting, LLC ©1981, 2019 Musco Sports Lighting, LLC

**ILLUMINATION SUMMARY**

Pole location(s) ⊕ dimensions are relative to 0.0 reference point(s) ⊗



ENGINEERED DESIGN By: Isaac Sanders • File #199752A • 14-Jun-19



199752A

GRID SUMMARY	
Name:	Property Spill Line
Spacing:	30.0'
Height:	3.0' above grade

ILLUMINATION SUMMARY	
HORIZONTAL FOOTCANDLES	
Scan Average:	0.1282
Maximum:	1.19
Minimum:	0.00
No. of Points:	239

LUMINAIRE INFORMATION	
Color / CRI:	5700K - 75 CRI
Luminaire Output:	160,000 / 136,000 / 89,600 lumens
No. of Luminaires:	78
Total Load:	104.7 kW

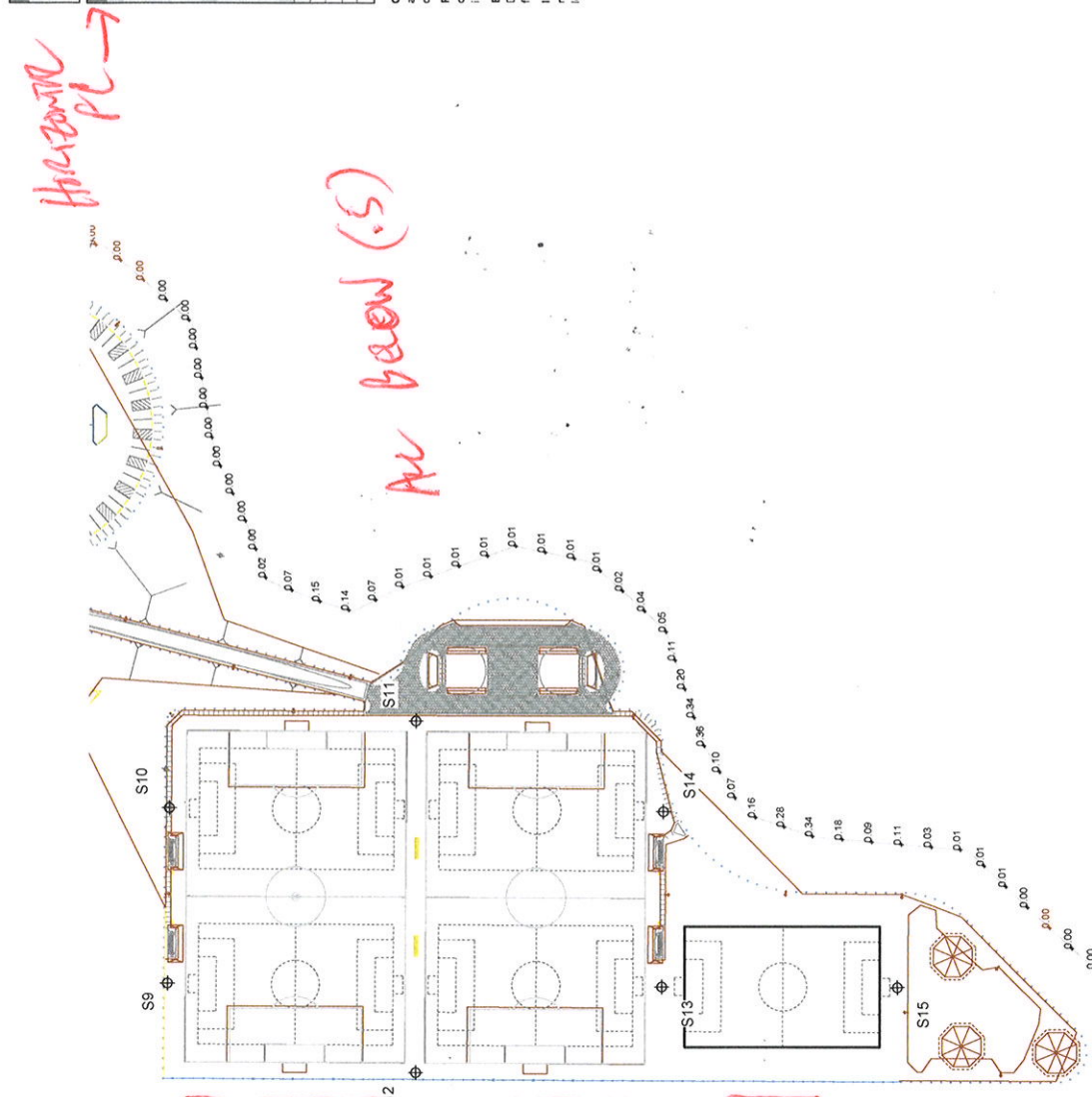
Luminaire Type	100 hrs	100 hrs	170 hrs
TLC-LED-1500	>81,000	>81,000	>81,000
TLC-LED-1200	>81,000	>81,000	>81,000
TLC-LED-900	>81,000	>81,000	>81,000

**Guaranteed Performance:** The ILLUMINATION described above is guaranteed per your Musco Warranty document.

**Field Measurements:** Individual field measurements may vary from computer-calculated predictions and should be taken in accordance with IESNA RP-6-15.

**Electrical System Requirements:** Refer to Amperage Draw Chart and/or the "Musco Control System Summary" for electrical sizing.

**Installation Requirements:** Results assume ± 3% nominal voltage at line side of the driver and structures located within 3 feet (1m) of design locations.



**EQUIPMENT LIST FOR AREAS SHOWN**

CITY	LOCATION	POLE	SIZE	GRADE ELEVATION	MOUNTING HEIGHT	LUMINAIRE TYPE	QTY	THIS GRID	OTHER GRID
4	S1-S4	60'	70'	-	70'	TLC-LED-1500	5	5	0
3	S5-S8	70'	70'	-	70'	TLC-LED-1500	4	4	0
2	S9-S10, S14	80'	80'	-	80'	TLC-LED-1500	10	10	0
1	S11-S12	80'	70'	-	70'	TLC-LED-900	2	2	0
1	S13	70'	70'	-	70'	TLC-LED-1200	5	5	0
1	S15	60'	60'	-	60'	TLC-LED-1200	5	5	0
15	TOTALS						78	78	0

\* This structure utilizes a back-to-back mounting configuration

*Handwritten red notes:*  
 WE STAYED PTS.  
 THESE DATA THIS POINT  
 I BELIEVE AS  
 I DISCUSSED  
 "INSTRUMENT"  
 THESE NUMBERS  
 (5) (1) (1) (1) (1)  
 THESE  
 DROPPED

Pole location(s) ± dimensions are relative to 0.0 reference point(s) ⊗



SCALE IN FEET 1 : 120  
 ENGINEERED DESIGN By: Isaac Sanders • File #199752A • 14-Jun-19



**We Make It Happen®**

Not to be reproduced in whole or part without the written consent of Musco Sports Lighting, LLC ©1981-2019 Musco Sports Lighting, LLC

**ILLUMINATION SUMMARY**

199752A

GRID SUMMARY	
Name:	Property Spill Line
Spacing:	30.0'
Height:	3.0' above grade

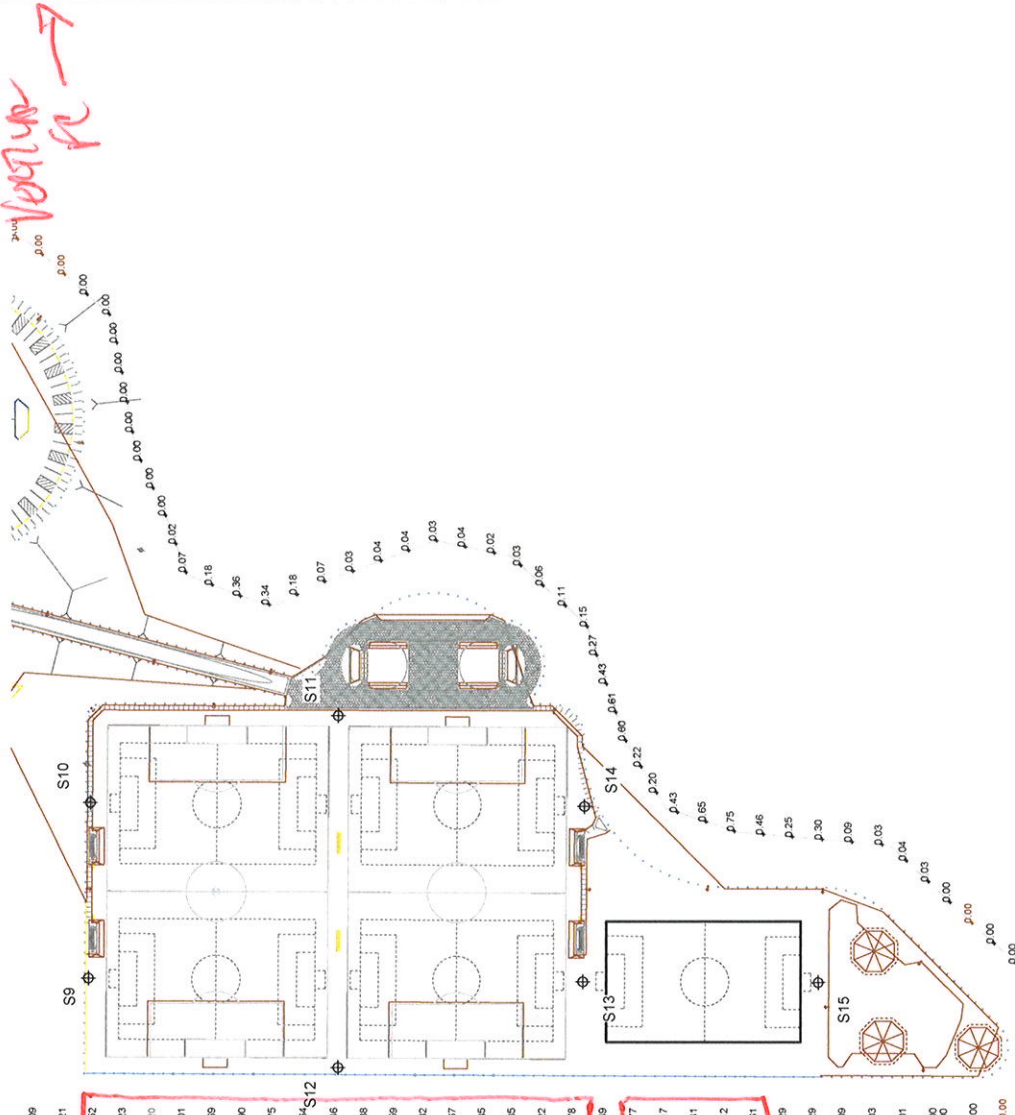
ILLUMINATION SUMMARY			
MAX VERTICAL FOOTCANDLES			
Scan Average:	0.2581		
Maximum:	2.20		
Minimum:	0.00		
No. of Points:	239		
LUMINAIRE INFORMATION			
Color / CRI:	5700K - 75 CRI		
Luminaire Output:	160,000 / 136,000 / 89,600 lumens		
No. of Luminaires:	78		
Total Load:	104.7 kW		
Luminaire Information			
Luminaire Type	100 hrs	160 hrs	170 hrs
TLC-LED-1500	81,000	81,000	81,000
TLC-LED-1000	81,000	81,000	81,000
TLC-LED-900	81,000	81,000	81,000

**Guaranteed Performance:** The ILLUMINATION described above is guaranteed per your Musco Warranty document.

**Field Measurements:** Individual field measurements may vary from computer-calculated field measurements and should be taken in accordance with IESNA RP-8-15.

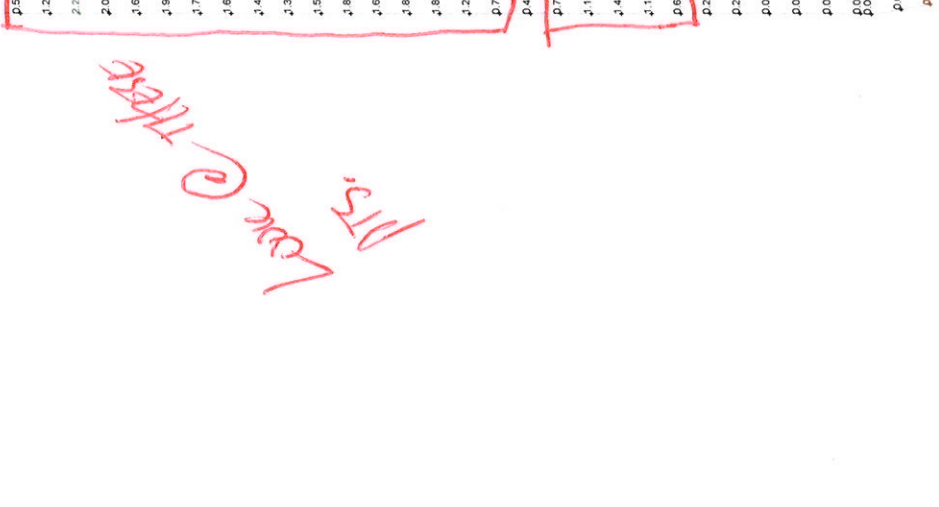
**Electrical System Requirements:** Refer to Amperage Draw Chart and/or the "Musco Control System Summary" for electrical sizing.

**Installation Requirements:** Results assume ± 3% nominal voltage at line side of the driver and structures located within 3 feet (1m) of design locations.



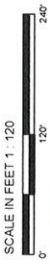
EQUIPMENT LIST FOR AREAS SHOWN									
QTY	LOCATION	POLE SIZE	GRID ELEVATION	MOUNTING HEIGHT	LUMINAIRE	QTY / POLE	THIS GRID	OTHER GRID	TOTAL
4	S1-S4	60'	-	70'	TLC-LED-1500	5	5	0	5
3	S5-S8	70'	-	70'	TLC-LED-1500	4	4	0	4
3	S9-S10, S14	70'	-	80'	TLC-LED-1500	10	10	0	10
2	S11-S12	80'	-	70'	TLC-LED-900	2	2	0	2
1	S13	70'	-	70'	TLC-LED-1000	5	5	0	5
1	S15	60'	-	60'	TLC-LED-1000	5	5	0	5
15	TOTALS					78	78	0	78

\* This structure utilizes a back-to-back mounting configuration.



*Level @ these PTS.*

SCALE IN FEET 1" = 20'



ENGINEERED DESIGN By: Isaac Sanders • File #199752A • 14-Jun-19



**We Make it Happen**  
Musco Lighting, LLC • 1981, 2019 Musco Sports Lighting, LLC

ILLUMINATION SUMMARY

Pole location(s) Ⓢ dimensions are relative to 0.0 reference point(s) ⊗

199752A

**EQUIPMENT LAYOUT**

**INCLUDES:**

- 1ASoccer
- 2ASoccer
- 3ASoccer
- 4ASoccer
- 5ASoccer

Electrical System Requirements: Refer to Amperage Draw Chart and/or the "Musco Control System Summary" for electrical sizing.

Installation Requirements: Results assume ± 3% nominal voltage at line side of the driver and structures located within 3 feet (1m) of design locations.

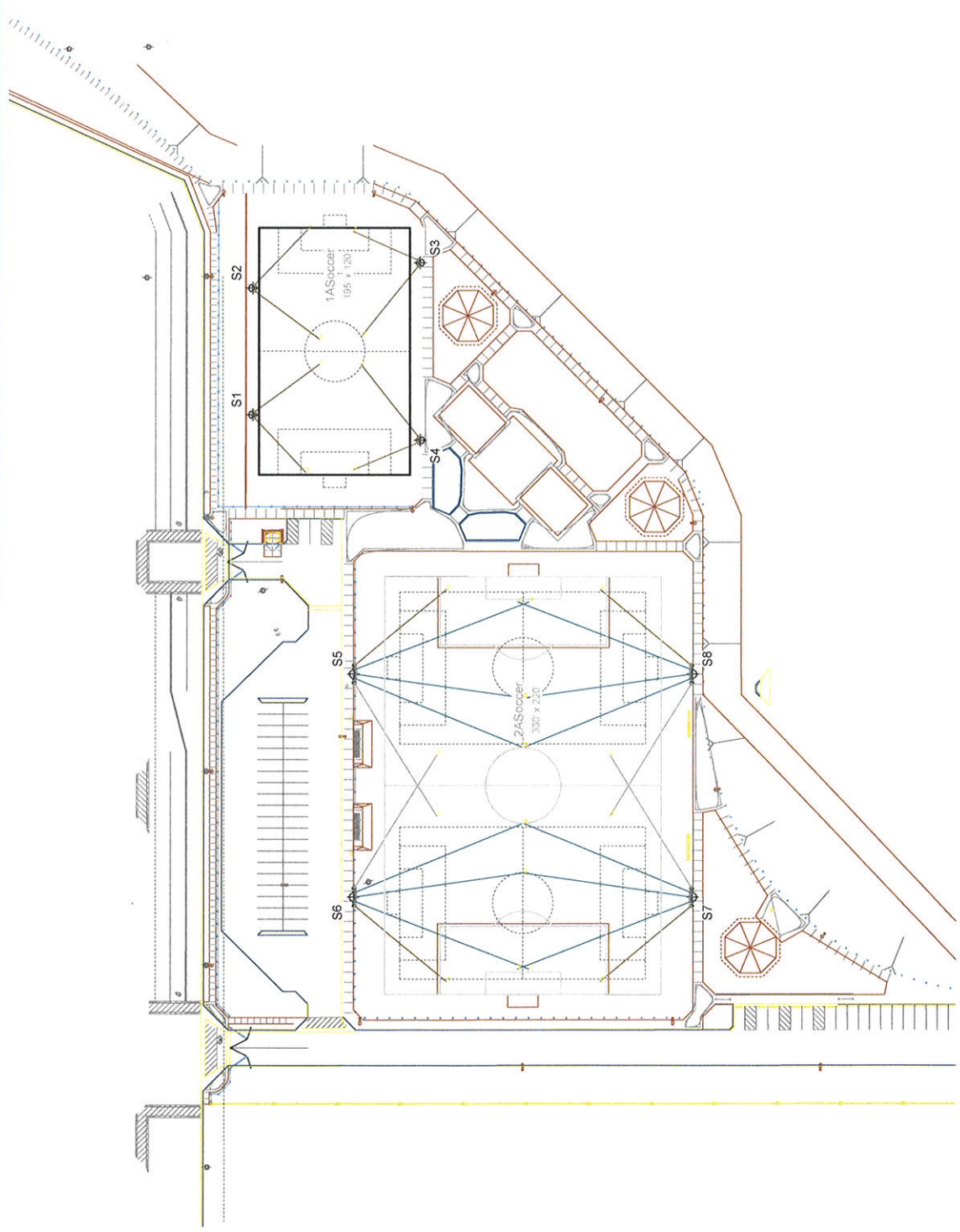
**EQUIPMENT LIST FOR AREAS SHOWN**

QTY	LOCATION	SIZE	GRADE ELEVATION	HEIGHT	WEIGHT	TYPE	QUANTITY
4	S1-S4	60"	-	70'	70'	TLC-LED-1200	5
4	S5-S8	70"	-	80'	80'	TLC-LED-1500	10
2	S11-S12	80"	-	80'	80'	TLC-LED-900	2
1	S13	70"	-	70'	70'	TLC-LED-1200	5*
3	S14	70"	-	70'	70'	TLC-LED-1500	4
1	S15	60"	-	60'	60'	TLC-LED-1200	5
15	TOTALS						78

\* This structure utilizes a back-to-back mounting configuration

**SINGLE LUMINAIRE AMPERAGE DRAW CHART**

Ballast Specifications (See notes for details)	Line Amperage Per Luminaire (Based on 120V)	
Single Phase Voltage	208	240
TLC-LED-1500	8.5	8.1
TLC-LED-1200	7.0	6.6
TLC-LED-900-A	5.3	5.0



Pole location(s)  $\oplus$  dimensions are relative to 0.0 reference point(s)  $\otimes$



SCALE IN FEET 1: 80  
ENGINEERED DESIGN By: Isaac Sanders • File #199752A • 14-Jun-19



We Make It Happen.

Not to be reproduced in whole or part without the written consent of Musco Sports Lighting, LLC © 1981, 2019 Musco Sports Lighting, LLC

**EQUIPMENT LAYOUT**

199752A

**EQUIPMENT LAYOUT**

- INCLUDES:**  
 - 1ASoccer  
 - 2ASoccer  
 - 3ASoccer  
 - 4BSoccer  
 - 5BSoccer

**Electrical System Requirements:** Refer to Amperage Draw Chart and/or the "Musco Control System Summary" for electrical sizing.

**Installation Requirements:** Results assume ± 3% nominal voltage at line side of the driver and structures located within 3 feet (1m) of design locations.

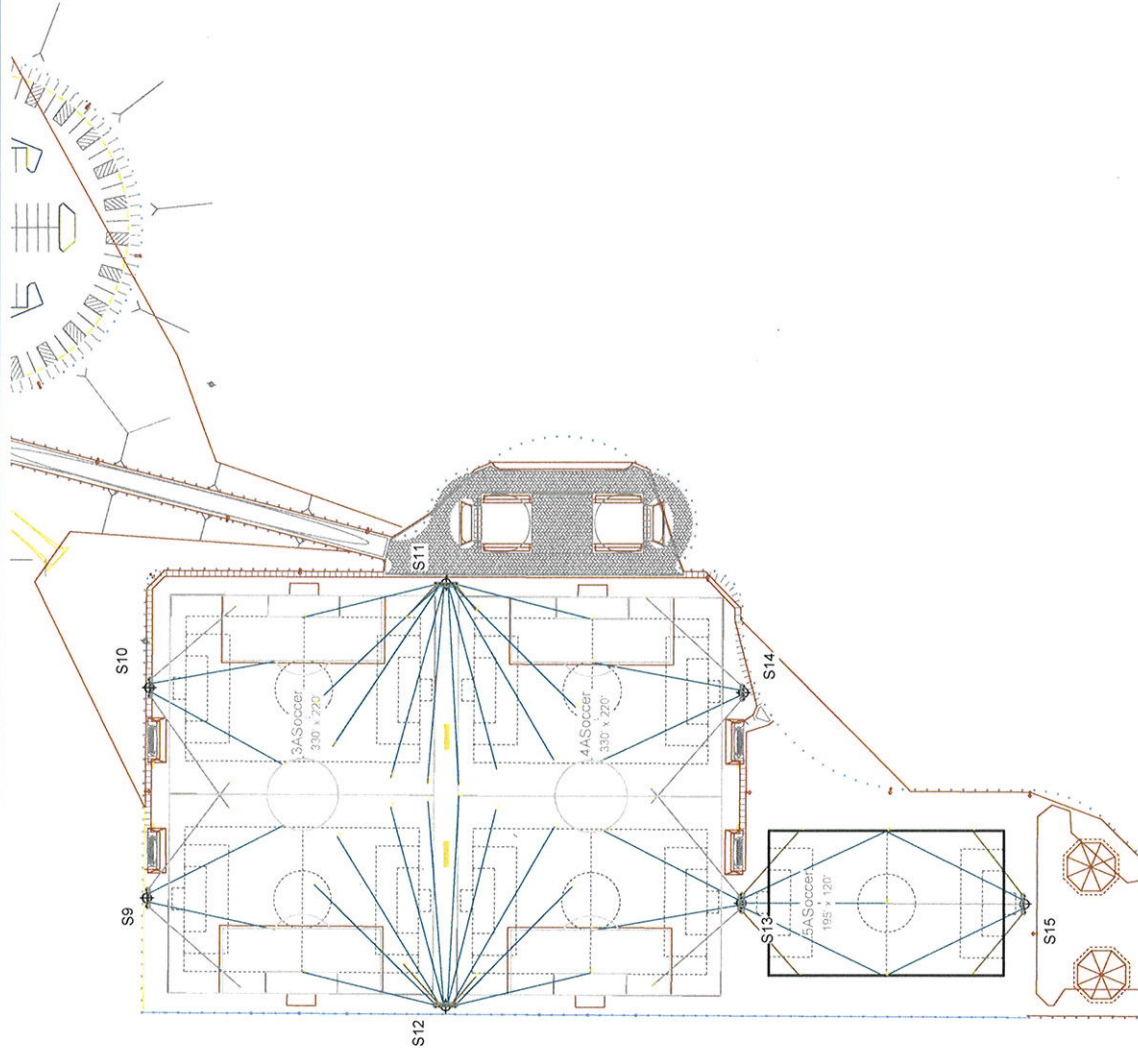
**EQUIPMENT LIST FOR AREAS SHOWN**

QTY	LOCATION	POLE SIZE	HEIGHT	MOUNTING HEIGHT	TYPE	QUANTITY
1	S1	54	60'	70'	TLC-LED-1200	5
4	S5-S8	70'	70'	80'	TLC-LED-1500	5
2	S11-S12	80'	80'	80'	TLC-LED-1500	10
1	S13	70'	70'	80'	TLC-LED-900	2
3	S14	70'	70'	70'	TLC-LED-1200	5*
	S9-S10	70'	70'	70'	TLC-LED-1500	4
1	S15	60'	60'	60'	TLC-LED-1200	5
<b>TOTALS</b>						<b>78</b>

\* This structure utilizes a back-to-back mounting configuration

**SINGLE LUMINAIRE AMPERAGE DRAW CHART**

Ballast Specifications	Line Amperage Per Luminaire				
(See main power factor)	(Line draw)				
Single Phase Voltage	208	220	240	277	347
TLC-LED-1500	1.0	1.0	1.0	1.0	1.0
TLC-LED-1200	7.0	6.2	6.1	5.2	3.8
TLC-LED-900A	5.3	5.0	4.6	4.0	2.9



Pole location(s) with dimensions are relative to D.O. reference point(s)



SCALE IN FEET 1" = 100'  
 ENGINEERED DESIGN By: Isaac Sanders • File #199752A • 14-Jun-19



Not to be reproduced or published without the written consent of Musco Sports Lighting, LLC ©1981, 2019 Musco Sports Lighting, LLC

**EQUIPMENT LAYOUT**