

Appendix D:
Cultural Resource Assessment

THIS PAGE INTENTIONALLY LEFT BLANK

Public Review Version – Redacted Pursuant to California Public Resources Code Section 5907

**CULTURAL RESOURCE ASSESSMENT
FOR THE LASSEN LIVERMORE
PROJECT, CITY OF LIVERMORE,
ALAMEDA COUNTY, CALIFORNIA**

Prepared by

Melinda A. Peak
Peak & Associates, Inc.
3941 Park Drive, Suite 20-329
El Dorado Hills, CA 95762
(916) 939-2405

Prepared for

Lewis Management Corp.
9216 Kiefer Blvd.
Sacramento, CA 95826

March 16, 2018
(Job #17-115)

INTRODUCTION

The overall project area is approximately 35 acres in size, encompassing two parcels (APNs 99-23-8 and 902-8-2-2) that are located immediately north of Interstate 580 and west of Springtown Boulevard in the City of Livermore, Alameda County, California. The project area is located within the Las Positas Land Grant, Township 3 South, Range 2 East, as mapped on the United States Geologic Survey (USGS) 7.5-minute series Altamont, Calif. topographic map quadrangle (Figure 1).

The proposal is to develop an agricultural themed community that is located within the city's Urban Growth Boundary. The site currently sits vacant and has land use designations for industrial and commercial development. The community proposes a change to provide residential use on approximately 12 acres, in addition to providing approximately 23 acres of open space (Figures 2 and 3).

The residential component of the proposal sits on the eastern portion of the site, adjacent to existing development and city services. The open space orchards, vineyards, and walking trail network will be placed primarily on the middle portion of the site. Contoured site grading and landscaped berming are also proposed on the middle portion of the site, and provide a transition between the developed eastern, infill portion of the site and the open space of the western portion.

The proposal is also marked by its avoidance of Arroyo Seco, which sits at the far western portion of the site, and any potential sensitive habitat. All proposed development activities are placed outside of potential Army Corps, Regional Water Quality Control Board, and California Department of Fish and Wildlife jurisdictional areas.

Melinda A. Peak, senior historian/archeologist with Peak & Associates, Inc. served as principal investigator for the study with Michael Lawson (resumes, Appendix 1), completing the field survey.

STATE REGULATIONS

State historic preservation regulations affecting this project include the statutes and guidelines contained in the California Environmental Quality Act (CEQA; Public Resources Code sections 21083.2 and 21084.1 and sections 15064.5 and 15126.4 (b) of the CEQA Guidelines). CEQA Section 15064.5 requires that lead agencies determine whether projects may have a significant effect on archaeological and historical resources. Public Resources Code Section 21098.1 further cites: A project that may cause a substantial adverse change in the significance of an historical resource is a project that may have a significant effect on the environment.

Lassen - Livermore Project

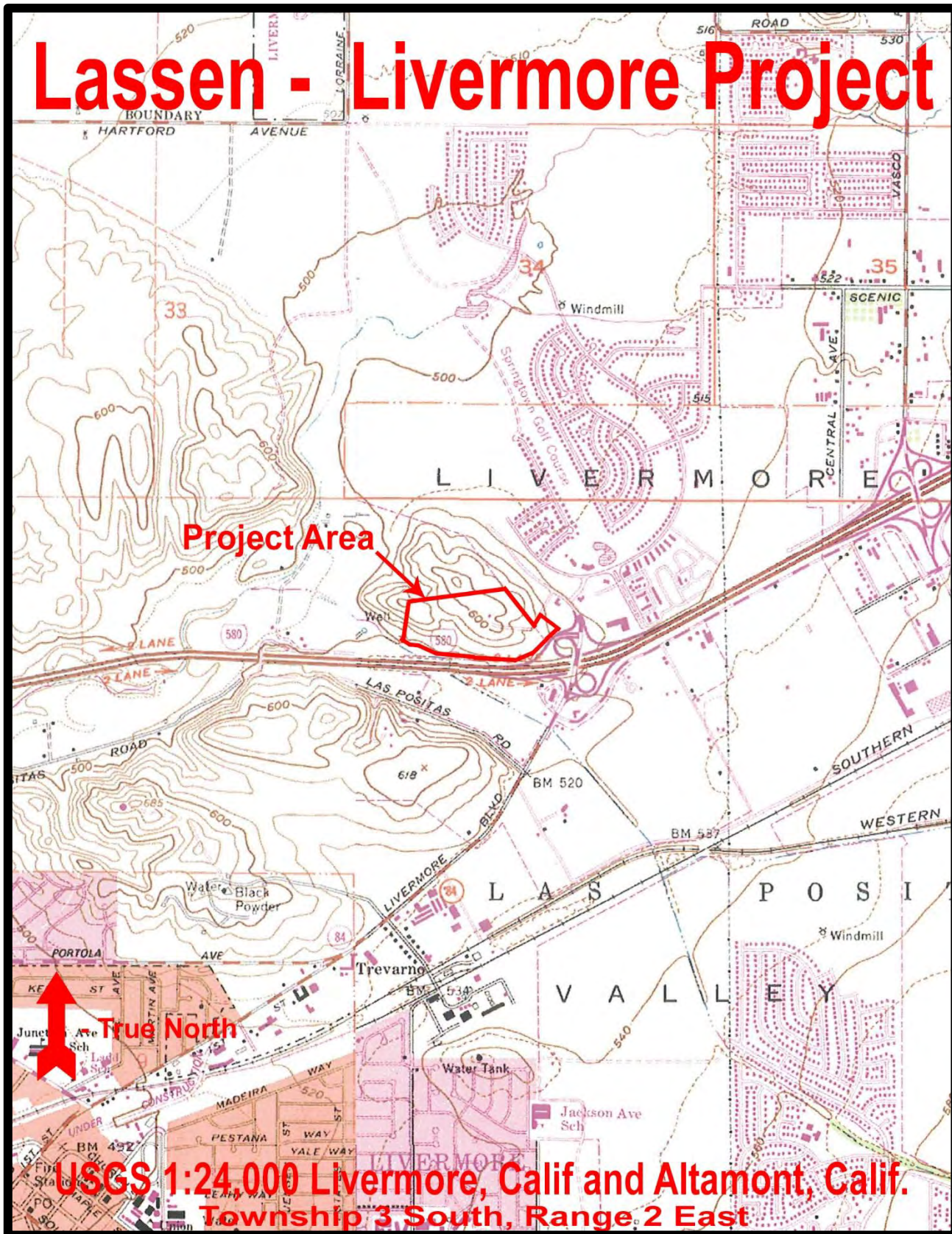


Figure 1



Figure 3

An “historical resource” includes, but is not limited to, any object, building, structure, site, area, place, record or manuscript that is historically or archaeologically significant (Public Resources Code section 5020.1).

Advice on procedures to identify such resources, evaluate their importance, and estimate potential effects is given in several agency publications such as the series produced by the Governor’s Office of Planning and Research (OPR), *CEQA and Archaeological Resources*, 1994. The technical advice series produced by OPR strongly recommends that Native American concerns and the concerns of other interested persons and corporate entities, including, but not limited to, museums, historical commissions, associations and societies be solicited as part of the process of cultural resources inventory. In addition, California law protects Native American burials, skeletal remains, and associated grave goods regardless of the antiquity and provides for the sensitive treatment and disposition of those remains (California Health and Safety Code Section 7050.5, California Public Resources Codes Sections 5097.94 et al).

The California Register of Historical Resources (Public Resources Code Section 5020 et seq.)

The State Historic Preservation Office (SHPO) maintains the California Register of Historical Resources (CRHR). Properties listed, or formally designated as eligible for listing, on the National Register of Historic Places are automatically listed on the CRHR, as are State Landmarks and Points of Interest. The CRHR also includes properties designated under local ordinances or identified through local historical resource surveys.

For the purposes of CEQA, an historical resource is a resource listed in, or determined eligible for listing in the California Register of Historical Resources. When a project will impact a site, it needs to be determined whether the site is an historical resource. The criteria are set forth in Section 15064.5(a) (3) of the CEQA Guidelines, and are defined as any resource that does any of the following:

- A. Is associated with events that have made a significant contribution to the broad patterns of California’s history and cultural heritage;
- B. Is associated with the lives of persons important in our past;
- C. Embodies the distinctive characteristics of a type, period, region, or method of construction, or represents the work of an important creative individual, or possesses high artistic values; or
- D. Has yielded, or may be likely to yield, information important in prehistory or history.

In addition, the CEQA Guidelines, Section 15064.5(a) (4) states:

The fact that a resource is not listed in, or determined to be eligible for listing in the California Register of Historical Resources, not included in a local register of historical resources (pursuant to section 5020.1(k) of the Public Resources Code), or identified in an historical resources survey

(meeting the criteria in section 5024.1(g) of the Public Resources Code) does not preclude a lead agency from determining that the resource may be an historical resource as defined in Public Resources Code section 5020.1(j) or 5024.1.

California Health and Safety Code Sections 7050.5, 7051, And 7054

These sections collectively address the illegality of interference with human burial remains, as well as the disposition of Native American burials in archaeological sites. The law protects such remains from disturbance, vandalism, or inadvertent destruction, and establishes procedures to be implemented if Native American skeletal remains are discovered during construction of a project, including the treatment of remains prior to, during, and after evaluation, and reburial procedures.

California Public Resources Code Section 15064.5(e)

This law addresses the disposition of Native American burials in archaeological sites and protects such remains from disturbance, vandalism, or inadvertent destruction. The section establishes procedures to be implemented if Native American skeletal remains are discovered during construction of a project and establishes the Native American Heritage Commission as the entity responsible to resolve disputes regarding the disposition of such remains.

Assembly Bill 52

Assembly Bill (AB) 52 establishes a formal consultation process for California tribes as part of CEQA and equates significant impacts on tribal cultural resources with significant environmental impacts. AB 52 defines a “California Native American Tribe” as a Native American tribe located in California that is on the contact list maintained by the Native American Heritage Commission. AB 52 requires formal consultation with California Native American Tribes prior to determining the level of environmental document if a tribe has requested to be informed by the lead agency of proposed projects. AB 52 also requires that consultation address project mitigation measures for significant effects, if requested by the California Native American Tribe, and that consultation be concluded when either the parties agree to measures to mitigate or avoid a significant effect, or the agency concludes that mutual agreement cannot be reached. Under AB 52, such measures shall be recommended for inclusion in the environmental document and adopted mitigation monitoring program if determined to avoid or lessen a significant impact on a tribal cultural resource.

CULTURAL SETTING

Archeology

Early archeological work in the Bay Area concentrated on shell mounds around the shores of San Francisco Bay and San Pablo Bay. By the time archeological interest began to be directed toward the

interior valleys, early urbanization and even earlier agricultural use of the land had destroyed or seriously altered much of the archeological record. It is only in relatively recent years that techniques of archeological analysis and the volume of excavation work done in the area, largely as a result of environmental laws, have allowed a synthesis of regional prehistory.

Major archeological projects by the Corps of Engineers (Walnut Creek area), the Department of Water Resources (Los Vaqueros Reservoir area) and others have greatly expanded our knowledge of the archeology of the East Bay interior. This has led to a fairly detailed description of the archeological sequences of coastal and most of interior Contra Costa and Alameda counties.

The early phases of prehistory, before about 4000 B.C., are not very well represented in the Bay Region, probably due in part to fluctuations in mean sea level. By that date the Bay Area was occupied by a relatively sparse population that did not make efficient use of the marine resources available in the area. In interior Contra Costa County, the earliest dated component is Stratum C at the Stone Valley site, CA-CCO-308, where a radiocarbon date of 2500 ± 400 B.C. (UCLA 259) was associated with flexed burials and artifacts that reflected both the later cultures of the Bay Area (the Berkeley Pattern) and early cultures of the Central Valley (the Windmiller Pattern). The excavator concluded that the component, along with bay shore sites of similar time depth, represented very early Berkeley Pattern and that this either derived from Windmiller or was heavily influenced by contemporaneous Windmiller people. Others (c.f. Banks et al. 1984) considered CCO-308 to represent very late Windmiller Pattern, Stone Valley Aspect. As more radiocarbon dates became available, Fredrickson's view seemed more likely, since the earliest dated Windmiller Component in the Central Valley was about 2450 B.C. at the Blossom Site in San Joaquin County.

Over the long time span when Berkeley Pattern cultures occupied the Bay Area (the pattern lasts until about A.D. 500) there was a gradual elaboration of material culture along with local and regional variations. The main characteristics of the material culture, however, remained essentially unchanged over this time span, which is why it can be described as a Pattern. These characteristics include the use of primarily non-stemmed projectile points with the dart and atlatl (throwing board), the predominance of grinding implements over hunting implements and the predominance of the cobble pestle with minimally shaped mortar over other grinding implements. As compared to the Windmiller Pattern, the polished stone industry is minimal but, over time, the industry in bone becomes much more elaborate. The greater density and depth of sites suggests a higher population for Berkeley Pattern. Long range trade relationships, on the other hand, do not appear to be very well established. There are relatively fewer trade goods and these almost always arrive as finished artifacts rather than raw material. The mortuary complex is characterized by flexed burials within the village and few, if any, grave goods (Fredrickson 1973).

Over time, Berkeley Pattern sites become more numerous in the Bay Area and the material culture becomes more elaborate, appearing to reflect a relatively mobile population moving into the area and then becoming sedentary and developing a more elaborate culture. Using radiocarbon dates for initial occupation of Berkeley Pattern sites, Moratto (1984:278-281) sees a movement of Utian people from the Delta to interior Contra Costa County then to the East Bay and finally to the coast, spreading north into the San Francisco peninsula and south to the Monterey Bay region. A similar expansion is also seen on the north side of San Pablo Bay and extending finally to the Bodega Bay vicinity and the

Napa Valley. If this view is correct, by the end of Berkeley Pattern times Utian speakers occupied essentially the same territory that they controlled at the time the Spanish arrived more than a thousand years later.

King (1974) has proposed a mechanism that may account for the Utian expansion. Initial settlement in an area would have been at a location with a maximum of resource zones within easy reach of the population, typically, a bay-side or marsh location near a freshwater stream. As the population of this settlement grew, smaller settlements in less ideal ecological settings would be established. As the population approached the carrying capacity of the environment, given the technology available to exploit the environment, pressure would grow for more formal, non-egalitarian social systems to organize the population for more efficient resource exploitation.

The final result of the type of development hypothesized by King can take several forms, such as: a stagnant society that has reached an equilibrium with the environmental carrying capacity that does not allow for growth or substantial change, a collapse and reordering of the mature social pattern, or introduction of new technologies or social systems that allow for a different and more efficient pattern of resource use. In the Bay Area the latter solution was found, resulting in the Augustine Pattern.

The Augustine Pattern in the Bay Area develops out of the Berkeley Pattern with no evidence of movement of people into the area. Socially, trends observed in the later Berkeley Pattern continue and are intensified. These trends include development of status distinctions based on wealth, emergence of group-oriented religions (as opposed to individualistic shamanism), greater complexity of exchange systems to equalize access to resources and regularization of trade relationships between different populations (Fredrickson 1974). Archeologically, the transition to the Augustine Pattern is marked by the introduction of the bow and arrow, resulting in a sudden change in projectile point styles at about A.D. 500. The greater complexity of the ordering of society continues through this period until interrupted by the arrival of the Spanish.

Ethnography

The Native Americans who occupied much of the San Francisco Bay area were known to early ethnographers as Costanoan. The designation "Costanoan" derives from the Spanish term for coastal people and was not used by the Indian people. Today, most of them prefer to be called Ohlone, after an important village in the San Francisco area.

Ancestors of the Ohlone people moved into the San Francisco and Monterey Bay areas from the Delta of the San Joaquin and Sacramento rivers about A.D. 500. The Ohlone territory extended from the Carquinez Strait in the northeast to just south of Chalome Creek in the southeast and from San Francisco to the Sur River along the Coast. This vast territory was broken into eight different language based zones. These eight branches of the Ohlone language family were separate languages, not dialects.

The group that inhabited the project vicinity were the *Souyen* tribelet of the Ohlone according to Milliken (1996:254-255). This little-known group held a part of the far northern portion of Costanoan territory and were bordered by Coast Miwok speakers as well as other Ohlone tribelets

The Ohlone preferred to situate their permanent villages on high ground above seasonal marshes that were inundated by highwater for a few months of the year. Access to fresh drinking water was a criterium for selecting a village location. The tribelet was the basic unit of Ohlone political organization. Territorial boundaries of tribelets were defined by physiographic features. Tribelet chiefs might be either men or women. The office was inherited patrilineally, usually passing from father to son. When there were no male heirs, the position went to the man's sister or daughter. Accession to the office of chief required approval of the community. The chief was responsible for feeding visitors, providing for the impoverished, directing ceremonial activities, caring for captive grizzly bears and coyote, and directing hunting, fishing, gathering, and warfare expeditions. In all these matters the chief acted as the leader of a council of elders. The chief and council served mainly as advisors to the community (Levy 1978:487).

Ohlone had mixed relations with various peoples. Wars were waged both among the various Ohlone tribelets and with Esselen, Salinan, and Northern Valley Yokuts. At the same time, however, they traded with the Plains Miwok, Sierra Miwok, and Yokuts. They augmented the wealth of locally-available resources by trading with the Miwok and Yokuts. The Ohlone supplied mussels, abalone shells, salt, and dried abalone to the Yokuts, bows to the Plains Miwok, and olivella shells to the Sierra Miwok. In return, they received piñon nuts from the Yokuts and probably clam shell disk beads from the Miwok (Levy 1978:488-489, 493).

The Ohlones followed a seasonal round of subsistence activities, gathering plant and animal foods and materials for baskets and other manufactures. They insured a sustained yield of plant and animal foods by careful management of the land. Large mammals consumed by the Ohlones included black-tailed deer, Roosevelt elk, antelope, grizzly bear, mountain lion, sea lion, and whale. Other mammals eaten included dog, wildcat, skunk, raccoon, brush rabbit, cottontail, jackrabbit, tree squirrel, ground squirrel, woodrat, mouse, and mole. Some of the types of fowl they ate include the Canadian goose, snow goose, pintail mallard, and the mourning dove. In addition to animals, the Ohlones also ate seeds including acorns and buckeye, and berries including blackberries, strawberries, and wild grapes among others (Levy 1978:491).

Religion and ceremony played important roles in life and death. Ohlones observed rituals at important life events such as birth, puberty, and death. Treatment of the dead varied, with northern Ohlone groups, including the *Karkin*, reportedly cremating their dead except when there were no kinsman to gather wood for a funeral pyre, in which case the corpse was buried (Kroeber 1925:469; Levy 1978:490).

Shamans controlled the weather and could cause rain to start or stop. They cured disease by cutting the skin of the patient, sucking out the disease objects and exhibiting them to onlookers. Shamans also used herbs in curing disease and conducted performances to insure good crops of acorns, an abundance of fish, or the stranding of whales (Levy 1978:490).

Spanish explorers of coastal California between 1767 and 1776 described the Ohlones living a traditional existence. Between 1770 and 1797, the Franciscans established seven missions in Ohlone territory and effectively changed the Indian way of life. Unwilling recruits to the missions resisted control by Franciscans. In 1793, a runaway neophyte named Charquin began a

three-year struggle during which tribes in the northeast Bay Area engaged in sporadic warfare with the Spanish. The Ohlones also mounted resistance against Mission San Jose in 1800 (Castillo 1978:103). Levy (1978:486) reports that “mission baptismal records demonstrate that the last Ohlone tribelets living an aboriginal existence had disappeared by 1810,” and that by 1832 the Ohlone population had decreased to one-fifth or less than its pre-contact size.

After the Mexican government secularized the missions (between 1834 and 1836), some Ohlones returned to traditional religious and subsistence practices while others worked on Mexican ranchos. Former mission residents formed multi-tribal Indian communities in Pleasanton and other locations within Ohlone territory. Although the Ohlone languages were probably extinct by 1935, it has been estimated that more than 200 persons of Ohlone descent were living in 1973 (Levy 1978:487). In addition, there is an on-going program among modern Ohlone to revive their languages to the extent possible.

Historic Context

The lands of the project area were used until recently for the same purpose as they have since the earliest non-Native occupancy of the region: cattle grazing. To the south, the missions ran herds of cattle in the grassy valley and surrounding hills.

Robert Livermore arrived in California in 1822, a young English sailor who deserted the trading ship, the *Colonel Young*. He traveled about, working for Spanish settlers. In 1834, he married Josefa Higuera. By 1835, he and William Gulnac lived in a house in what became identified as Livermore Valley. Gulnac petitioned the governor for Rancho Las Positas, but before the grant was made, Gunac had turned over his rights to Livermore and José Noriega. In April 1839, Governor Juan Alvarado granted the land to them, a total of about 8,800 acres. Livermore later bought out Noriega’s interest.

Livermore became a naturalized citizen of Alta California in 1844. Two years later, he bought a second rancho in the region, Rancho Cañada de Los Vaqueros, primarily in what is now Contra Costa County, but skirting the northern portion of the Livermore Valley. Both ranchos were later confirmed to his ownership, and Livermore became a wealthy man. The rancho was stocked with cattle, and after the fathers at Mission San José, Robert Livermore was the first man to plant both a vineyard and orchards of pear and olives in this part of California.

An early branch line of the Central Pacific Railroad crossed the Livermore Valley, completed in 1869. The line was the route from Sacramento to Niles and became the Southern Pacific Railroad. William Mendenhall, another early settler in the region, had the town of Livermore laid out in October 1869. Livermore became incorporated in 1876 (Hoover, Rensch and Rensch 1970).

Wine-making began in the early 1880s in the Livermore Valley region and continues to be an important industry in the region.

The area surrounding the City remained agricultural in nature for a number of years. In 1942, former ranch land became the site of the Livermore Naval Air Station. This base was closed in 1946. In 1952, the federal government established the Lawrence Livermore National Laboratory was established on the site and became a major employer in Livermore. The growth of the Bay Area has led to an increasing demand for housing, with subsequent residential and industrial growth in the Livermore region, with decreasing agriculture use and most of the ranches now under subdivisions.

RESEARCH

A record search was conducted for the project area at the Northwest Information Center of the California Historical Resources Information System on February 21, 2018 (NWIC File No. 17-1919; Appendix 2). The NWIC reported that there have been five surveys that covered portions of the project area, but they all covered small strips along the edges. The bulk of the land involved in the current project had never been surveyed. The previous surveys were mostly related to projects on Interstate 580. The only sites recorded were standing buildings on the south side of Interstate 580, across the freeway from the current project.

There have been at least 16 studies reported in the area that involved literature or records reviews but did not involve any field work. These have no particular relevance for identifying resources within this project area.

FIELD ASSESSMENT

Michael Lawson, an experienced field archeologist, conducted the complete survey of the project area on February 21, 2018 (Figure 4).

The property surveyed is roughly rectangular in shape with I-580 bordering the south side, and open grazing land to the west and north. Residential and commercial property abuts the east end.

The landform is hilly, with two hilltops near the center of the parcel connected by a saddle. They slope downward to the south to meet the natural drainage with steeply eroded banks and year-round flow. This creek exits the property through a concrete-walled corridor beneath the roadway and flows beneath I-580 to continue south-eastward.

Visible on a topographic map of the area is a building on the highest hill near the center-east on the parcel, dating to after 1953.

At this location appears to be the remains of a corral or pen, with 20-30 fragments of weathered lumber are scattered over a 30' x 50' area, with tangled barbed wire, a tree trunk, hauled-in rock, and modern debris such as beer bottles and cans. Remaining hardware and fasteners such as nails

Lassen - Livermore Project Survey Coverage

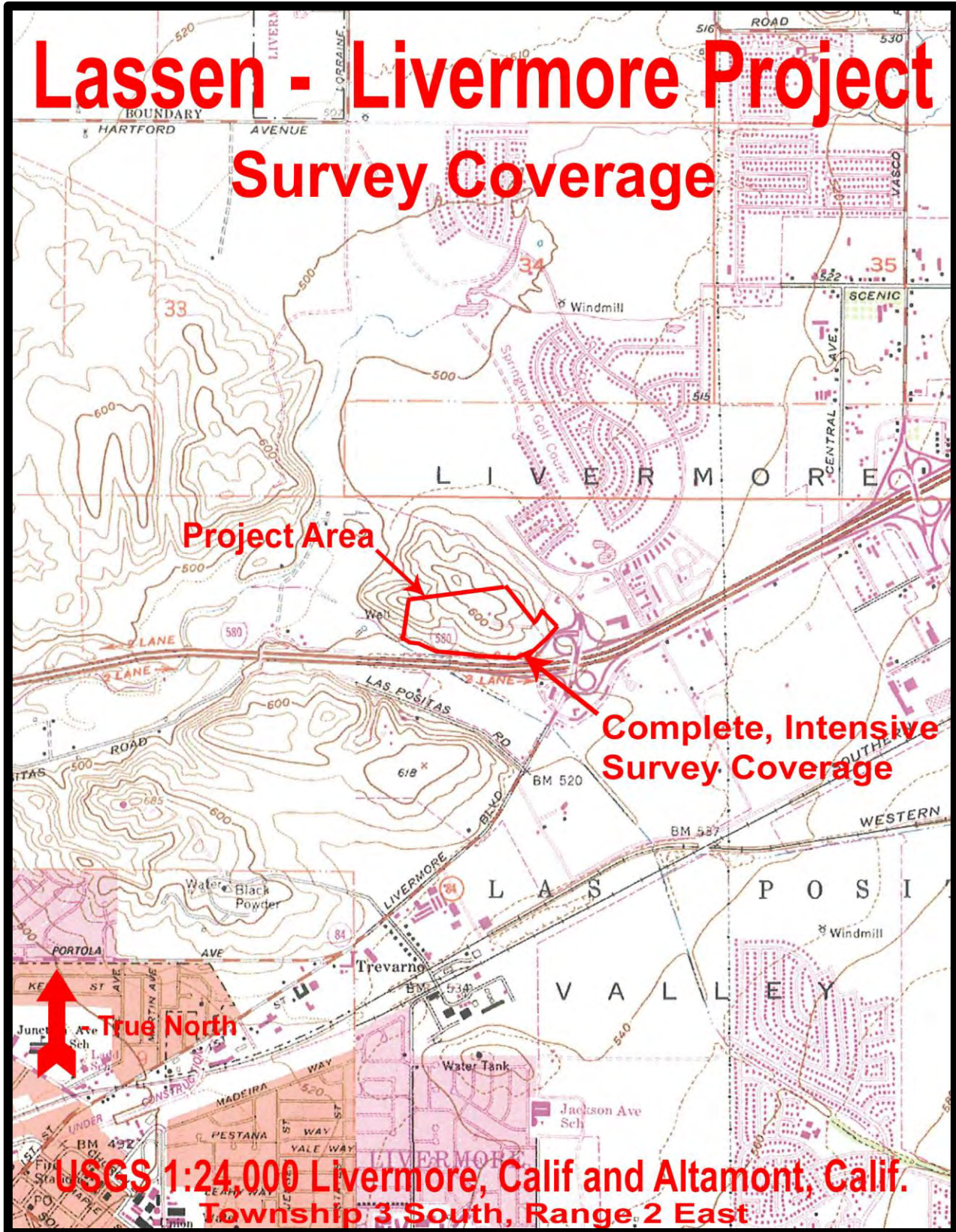


Figure 4

and screws are modern in style. No building materials or features were discovered which match those of the historic period.

During the survey soil visibility was good to fair. Dense grass in some areas impeded view of soil, but grazing by cattle currently occupying the area, heavy ground squirrel activity, and naturally bare areas allowed sufficient investigation.

Soil was noted as dark brown to light brown with orangish tint near the surface. Deep rodent burrowing revealed a very light tan to white chalky soil below the brown strata, which seemed to prevail throughout the parcel.

Natural stone of several varieties and common in content was observed and carefully inspected. Quartz, quartzite, feldspar, chert, and other crypto-crystalline silicates made up the majority of rock types, with sandstone, schists and andesite also appearing less commonly. Much of this stone was identified as good quality stone suitable for use for tools by prehistoric peoples, but close scrutiny of all surface examples failed to show signs of assay, reduction or other cultural modification.

Other than grass, no trees or bushes occupy the parcel with exception of the riparian zone along the creek, which has varying densities of native and non-native species.

Since the parcel has natural features commonly associated with prehistoric human presence such as a creek, plenty of natural stone, south-facing slopes and similar resources nearby, close transects of 5 to 10 meters were employed during the survey, with additional scrutiny where visibility was exceptional. Occasional secondary passes over locations dense with natural stone or exceptional subsurface disturbance by rodents did occur.

PA-18-L01

The resource is located on the north bank of Arroyo Seco Creek approximately 200 feet north and west of the culvert where the creek exits beneath Interstate 580.

The resource consists of three artifacts discovered within, or near, the base of a cut bank above Arroyo Seco Creek. Two of the artifacts (bowl mortar fragment, debitage fragment) were discovered in situ in the cut bank approximately 1.85 meters (six feet) below the existing ground surface. The third artifact, a bowl mortar fragment, was discovered on the terrace immediately adjacent to the creek but originally was likely located in the cut bank above the creek with the other two artifacts.

CONCLUSIONS

There is a prehistoric site on the property; it is located at a distance from any development features. This site will in no way be affected by the project. The building within the project area has been completely removed. The scrap wood from the cattle chute or corral cannot be dated

and appear to be from the cattle grazing operation on the property, possibly from the 1950s and 1960s.

The current project will not affect significant cultural resources.

RECOMMENDATIONS

There is always a possibility that a site may exist in the project area and be obscured by vegetation, siltation or historic activities, leaving no surface evidence. In order to assist in the recognition of cultural resources, a training session for all workers should be conducted in advance of the initiation of construction activities at the site. The training session will provide information on recognition of artifacts, human remains, and cultural deposits to help in the recognition of potential issues.

If artifacts, exotic rock, shell or bone are uncovered during the construction, work should stop in that area immediately. A qualified archeologist should be contacted to examine and evaluate the deposit.

Discovery of Human Remains

In the event of discovery or recognition of any human remains in any location other than a dedicated cemetery, there shall be no further excavation or disturbance of the site or any nearby area suspected to overlie adjacent remains until the Alameda County Coroner has determined that the remains are not subject to any provisions of law concerning investigation of the circumstances, manner and cause of death, and the recommendations concerning the treatment and disposition of the human remains have been made to the person responsible for the excavation, or to his or her authorized representative. The Coroner shall make his or her determination within two working days from the time the person responsible for the excavation, or his or her authorized representative, notifies the coroner of the discovery or recognition of the human remains.

If the Alameda County Coroner determines that the remains are not subject to his or her authority and if the Coroner recognizes the human remains to be those of a Native American or has reason to believe that they are those of a Native American, he or she shall contact, by telephone within 24 hours, the Native American Heritage Commission (NAHC).

After notification, the NAHC will follow the procedures outlines in Public Resources Code Section 5097.98. that include notifications of the most likely descendants (MLDs), and recommendations for the treatment of the remains. The MLDs will have 24 hours after notification by the NAHC to make their recommendations (PRC Section 5097.98).

REFERENCES

Banks, D., R. Orlins, and H. McCarthy

- 1984 Final Report of the Walnut Creek Project: Test Excavation and Evaluation of Archeological Site CA-CCo-431, Contra Costa County, California. Ms. on file, Corps of Engineers, Sacramento.

Bennyhoff, James A. and Richard E. Hughes

- 1984 Shell Beads and Ornament Exchange Networks between California and the Great Basin. In *The Archaeology of Monitor Valley, 5: Regional Synthesis and Implications*, by David H. Thomas. *Anthropological Papers of the American Museum of Natural History*. New York.

Castillo, Edward D.

- 1978 The impact of Euro-American exploration and settlement. In *California*, edited by Robert F. Heizer, pp. 99-127. In *Handbook of North American Indians*. vol. 8, William G. Sturtevant, general editor. Smithsonian Institution, Washington, D.C.

Elsasser, Albert B.

- 1978 Development of Regional Prehistoric Cultures. In *Handbook of North American Indians* (vol. 8), edited by Robert F. Heizer, pp. 37-57. Smithsonian Institution, Washington, D.C.

Fredrickson, David A.

- 1973 *Early Cultures of the North Coast Ranges, California*. Ph.D. dissertation, Department of Anthropology, University of California, Davis.

- 1984 The North Coastal Region. In *California Archaeology*, edited by Michael J. Moratto, pp. 471-527. Academic Press, New York.

Frickstad, Walter N.

- 1955 *A Century of California Post Offices: 1848-1954*. Pacific Rotaprinting Company, Oakland.

Groza, Randall G.

- 2002 An AMS Chronology for Central California *Olivella* Shell Beads. Master's Thesis, Department of Anthropology, California State University, San Francisco.

Hoover, Mildred, Hero E. Rensch, Ethel G. Rensch (William N. Abeloe, editor)

- 1970 *Historic Spots in California* (Third Edition). Stanford University Press, Stanford.

King, Thomas F.

- 1974 *Manos on the Mountains: Borax Lake Pattern High-Altitude Settlement and Subsistence in the North Coast Ranges of California*. Ms. on file, U.S. Forest Service, San Francisco.

Kroeber, Alfred L.

- 1925 *Handbook of the Indians of California*. *Bureau of American Ethnology Bulletin 78*. Smithsonian Institution, Washington, D.C.

Levy, Richard S.

- 1978 *Costanoan*. In *California*, edited by Robert F Heizer, pp. 485-495. *Handbook of North American Indians*. vol. 8, William G. Sturtevant, general editor. Smithsonian Institution, Washington, D.C.

Milliken, Randall

- 1996 *Ethnography of the Los Vaqueros Region*. In *Native American Historic Studies for the Los Vaqueros Project: A Synthesis*. David A. Fredrickson, editor. Ms. on file: Northwest Information Center, Sonoma State University, Rohnert Park.

Milliken, Randall, Richard T. Fitzgerald, Mark G. Hylkema, Randy Groza, Tom Origer, David G. Bieling, Alan Leventhal, Randy S. Wiberg, Andrew Gottsfield, Donna Gilette, Viviana Bellifemine, Eric Strother, Robert Cartier, and David A. Fredrickson

- 2007 *Punctuated Culture Change in the San Francisco Bay Area*. In: Terry L. Jones and Kathryn A. Klar, eds., *California Prehistory: Colonization, Culture, and Complexity*. Alta Mira Press, New York.

Moratto, Michael J.

- 1984 *California Archaeology*. Academic Press, New York.

Thompson & West

- 1878 *Official Historical Atlas Map of Alameda County*. Thompson & West, Oakland.

APPENDIX 1

Resumes

PEAK & ASSOCIATES, INC.
RESUME

MELINDA A. PEAK
Senior Historian/Archeologist
3941 Park Drive, Suite 20 #329
El Dorado Hills, CA 95762
(916) 939-2405

January 2018

PROFESSIONAL EXPERIENCE

Ms. Peak has served as the principal investigator on a wide range of prehistoric and historic excavations throughout California. She has directed laboratory analyses of archeological materials, including the historic period. She has also conducted a wide variety of cultural resource assessments in California, including documentary research, field survey, Native American consultation and report preparation.

In addition, Ms. Peak has developed a second field of expertise in applied history, specializing in site-specific research for historic period resources. She is a registered professional historian and has completed a number of historical research projects for a wide variety of site types.

Through her education and experience, Ms. Peak meets the Secretary of Interior Standards for historian, architectural historian, prehistoric archeologist and historic archeologist.

EDUCATION

M.A. - History - California State University, Sacramento, 1989
Thesis: *The Bellevue Mine: A Historical Resources Management Site Study in Plumas and Sierra Counties, California*
B.A. - Anthropology - University of California, Berkeley

PROJECTS

In recent years, Ms. Peak has led the team completing the cultural resource sections for General Plan and General Plan Updates, for a number of cities/neighborhoods including Campbell, Milpitas, Yountville, Manteca, The Springs, Sebastopol, Martinez, Brentwood, Colusa County and Foster City. Older General Plan efforts include Wheatland, Rocklin, Sheridan, Granite Bay and South Sutter County.

In recent months, Ms. Peak has completed a number of determinations of eligibility and effect documents in coordination with the Corps of Engineers for projects requiring federal permits, assessing the eligibility of a number of sites for the National Register of Historic Places.

She has also completed historical research projects on a wide variety of topics for a number of projects including the development of a winery in a ranch in Folsom, commercial buildings in the City of

Davis, a lumber mill in Clovis, older farmhouses dating to the 1860s, an early roadhouse, bridges, canals, former small-town site, and a section of an electric railway line.

In recent years, Ms. Peak has prepared a number of cultural resource overviews and predictive models for blocks of land proposed for future development for general and specific plans. She has been able to direct a number of surveys of these areas, allowing the model to be tested.

Ms. Peak completed the cultural resource research and contributed to the text prepared for the DeSabra-Centerville PAD for the initial stage of the FERC relicensing. She also served cultural resource project manager for the FERC relicensing of the Beardsley-Donnells Project. For the South Feather Power Project and the Woodleaf-Palermo and Sly Creek Transmission Lines, her team completing the technical work for the project.

She served as principal investigator for the multi-phase Twelve Bridges Golf Club project in Placer County. She served as liaison with the various agencies, helped prepare the historic properties treatment plan, managed the various phases of test and data recovery excavations, and completed the final report on the analysis of the test phase excavations of a number of prehistoric sites. She is currently involved as the principal investigator for the Clover Valley Lakes project adjacent to Twelve Bridges in the City of Rocklin, coordinating contacts with Native Americans, the Corps of Engineers and the Office of Historic Preservation.

Ms. Peak has served as project manager for a number of major survey and excavation projects in recent years, including the many surveys and site definition excavations for the 172-mile-long Pacific Pipeline proposed for construction in Santa Barbara, Ventura and Los Angeles counties. She also completed an archival study in the City of Los Angeles for the project, and served as principal investigator for a major coaxial cable removal project for AT&T.

Additionally, she completed a number of small surveys, served as a construction monitor at several urban sites, and conducted emergency recovery excavations for sites found during monitoring. She has directed the excavations of several historic complexes in Sacramento, Placer and El Dorado Counties.

Ms. Peak is the author of a chapter and two sections of a published history (1999) of Sacramento County, *Sacramento: Gold Rush Legacy, Metropolitan Legacy*. She served as the consultant for a children's book on California, published by Capstone Press in 2003 in the Land of Liberty series.

PEAK & ASSOCIATES, INC.
RESUME

MICHAEL LAWSON

January 2018

Archeological Specialist

3941 Park Drive, Suite 20-329

El Dorado Hills, CA 95672

(916) 939-2405

PROFESSIONAL EXPERIENCE

Mr. Lawson has compiled an excellent record of supervision of excavation and survey projects for both the public and private sectors over the past twenty-two years. He has conducted a number of surveys throughout northern and central California, as well as serving as an archeological technician and crew chief for a number of excavation projects.

EDUCATION

B.A. - Anthropology - California State University, Sacramento

Special Course: Comparative Osteology. University of Tennessee, Knoxville. Forensic Anthropology Center. January 2018.

Intensive lab and outdoor study with human example from outdoor research facility, including typical and non-metric examples, compared with fifty non-human species most commonly confused with human remains. Outdoor research facility "The Body Farm" study included survey, photography, collection and identification of faunal and human bone fragments, with a Power Point presentation discussing finds.

EXPERIENCE

- Extensive monitoring of open space, streets and project development areas for prehistoric period and historic period resources. Areas monitored include Sutter Street in Folsom; Mud Creek Archeological District in Chico; Camp Roberts, San Luis Obispo County; Avila Beach, San Luis Obispo County; Edgewood Golf Course, South Lake Tahoe; Davis Water Project, Davis; Star Bend levee section, Sutter County; Feather River levees, Sutter County; Bodega Bay, Sonoma County; San Jose BART line extension, Santa Clara County; and numerous sites for PG&E in San Francisco.
- Over twenty years of experience working in CRM, volunteer, and academic settings in California historic, proto-historic, and prehistoric archaeology.
- Expertise in pedestrian survey, excavation, feature (including burial) exposure, laboratory techniques, research. Field positions include crew chief and lead technician.

APPENDIX 2

NWIC Record Search

CALIFORNIA
HISTORICAL
RESOURCES
INFORMATION
SYSTEM



ALAMEDA
COLUSA
CONTRA COSTA
DEL NORTE

HUMBOLDT
LAKE
MARIN
MENDOCINO
MONTEREY
NAPA
SAN BENITO

SAN FRANCISCO
SAN MATEO
SANTA CLATA
SANTA CRUZ
SOLANO
SONOMA
YOLO

Northwest Information Center
Sonoma State University
150 Professional Center Drive, Suite E
Rohnert Park, California 94928-3609
Tel: 707.588.8455
nwic@sonoma.edu
<http://www.sonoma.edu/nwic>

2/21/2018

NWIC File No.: 17-1919

Robert A. Gerry
Peak & Associates, Inc.
3941 Park Drive, Suite 20-329
El Dorado Hills, CA 95762

Re: Lassen Livermore

The Northwest Information Center received your record search request for the project area referenced above, located on the Altamont USGS 7.5' quad(s). The following reflects the results of the records search for the project area and a one-eighth mile radius:

Resources within project area:	None
Resources within 1/8-mile radius:	P-01-011637, P-01-011639
Reports within project area:	S-13870, S-13871, S-20335, S-31701, S-35826
Reports within 1/8-mile radius:	S-28642
Other Reports within records search radius:	16 reports. These reports are classified as Other Reports, which are reports with little or no field work or missing maps. The electronic maps do not depict study areas for these reports. However, a list of these reports has been provided. In addition, you have not been charged any fees associated with these studies.

- Resource Database Printout (list):** enclosed not requested nothing listed
- Resource Database Printout (details):** enclosed not requested nothing listed
- Resource Digital Database Records:** enclosed not requested nothing listed
- Report Database Printout (list):** enclosed not requested nothing listed
- Report Database Printout (details):** enclosed not requested nothing listed
- Report Digital Database Records:** enclosed not requested nothing listed
- Resource Record Copies:** enclosed not requested nothing listed
- Report Copies:** enclosed not requested nothing listed
- OHP Historic Properties Directory:** enclosed not requested nothing listed
- Archaeological Determinations of Eligibility:** enclosed not requested nothing listed

CA Inventory of Historic Resources (1976): enclosed not requested nothing listed
Caltrans Bridge Survey: enclosed not requested nothing listed
Ethnographic Information: enclosed not requested nothing listed
Historical Literature: enclosed not requested nothing listed
Historical Maps: enclosed not requested nothing listed
Local Inventories: enclosed not requested nothing listed
GLO and/or Rancho Plat Maps: enclosed not requested nothing listed
Shipwreck Inventory: enclosed not requested nothing listed

Please forward a copy of any resulting reports from this project to the office as soon as possible. Due to the sensitive nature of archaeological site location data, we ask that you do not include resource location maps and resource location descriptions in your report if the report is for public distribution. If you have any questions regarding the results presented herein, please contact the office at the phone number listed above.

The provision of CHRIS Data via this records search response does not in any way constitute public disclosure of records otherwise exempt from disclosure under the California Public Records Act or any other law, including, but not limited to, records related to archeological site information maintained by or on behalf of, or in the possession of, the State of California, Department of Parks and Recreation, State Historic Preservation Officer, Office of Historic Preservation, or the State Historical Resources Commission.

Due to processing delays and other factors, not all of the historical resource reports and resource records that have been submitted to the Office of Historic Preservation are available via this records search. Additional information may be available through the federal, state, and local agencies that produced or paid for historical resource management work in the search area. Additionally, Native American tribes have historical resource information not in the CHRIS Inventory, and you should contact the California Native American Heritage Commission for information on local/regional tribal contacts.

Should you require any additional information for the above referenced project, reference the record search number listed above when making inquiries. Requests made after initial invoicing will result in the preparation of a separate invoice.

Thank you for using the California Historical Resources Information System (CHRIS).

Sincerely,

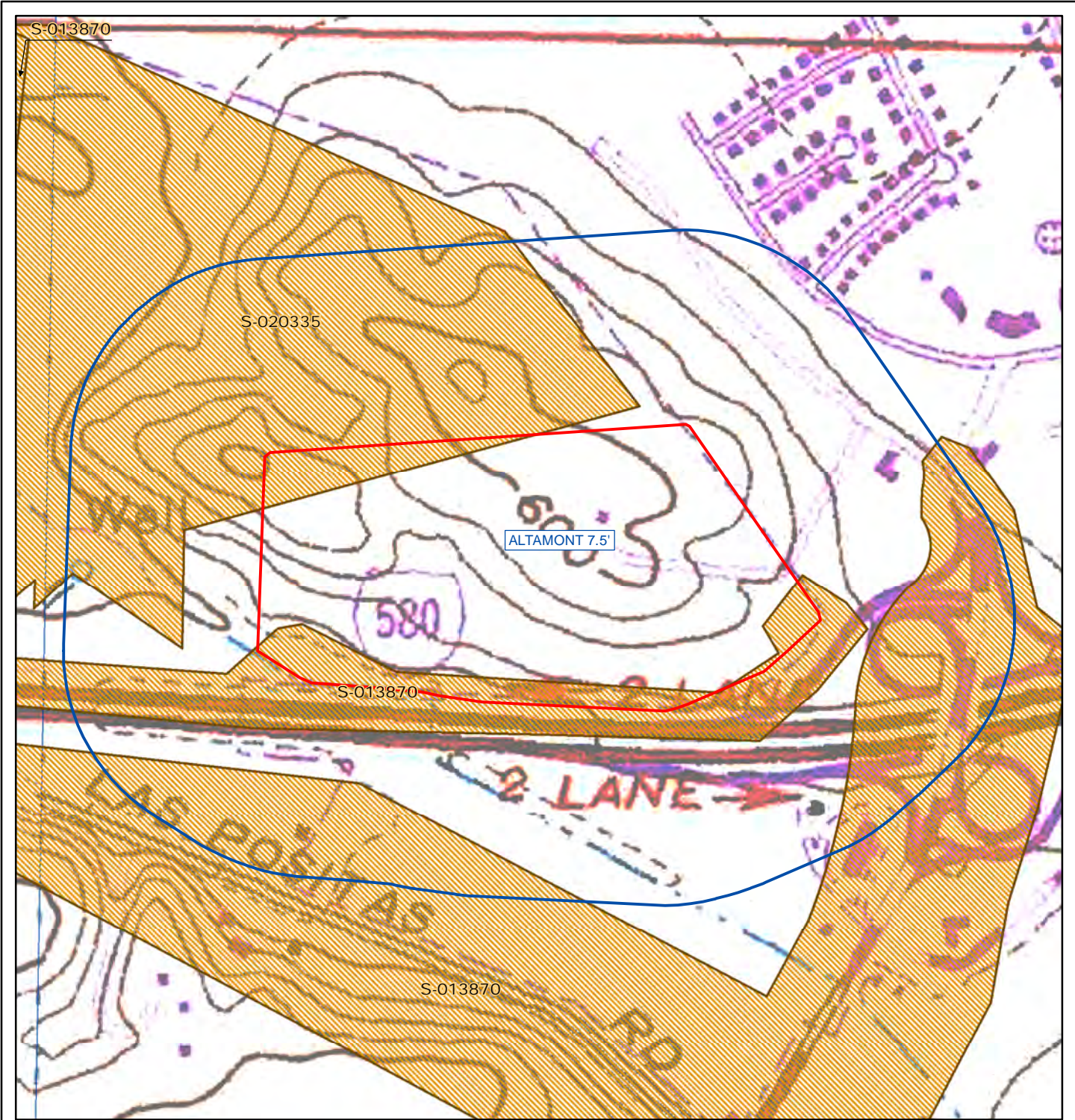
Jessika Akmenkalns
Researcher

Report List

Lassen Livermore

Report No.	Other IDs	Year	Author(s)	Title	Affiliation	Resources
S-013870		1991	Michael R. Fong, Stuart A. Guedon, Steve J. Rossa, and Angela M. Banet	Historic Property Survey Report for the First Street Widening and I-580/First Street Interchange Modifications Project - Phase 1, City of Livermore, Alameda	Basin Research Associates, Inc.	01-006836, 01-011636, 01-011637, 01-011638, 01-011639
S-013870a		1991	Ward Hill	Historic Architectural Survey Report, First Street/Las Positas Road Widening and Interstate 580/First Street Modifications, Livermore, California	Corbett & Hill	
S-013871		1991	Michael R. Fong, Stuart A. Guedon, Steve J. Rossa, and Angela M. Banet	Historic Property Survey Report for the First Street Widening and I-580/First Street Interchange Modifications Project - Phase 2, City of Livermore, Alameda County, California	Basin Research Associates, Inc.	01-006836, 01-011636, 01-011637, 01-011638, 01-011639
S-013871a		1991	Ward Hill	Historic Architectural Survey Report, First Street/Las Positas Road Widening and Interstate 580/First Street Modifications, Livermore, California	Corbett & Hill	
S-020335		1998	Randy S. Wiberg, Randall Dean, and Miley P. Holman	A Cultural Resources Study for the North Livermore Master Plan/Specific Plan, Environmental Impact Report, Alameda County, California	Holman & Associates	01-000067, 01-002197, 01-002200, 01-002201, 01-002202
S-031701	Caltrans - EA 04258 - 290810; Voided - S-33555	2006	M. Kate Lewis	Historic Property Survey Report: I-580 Eastbound HOV Lane Project: Hacienda Drive to East of Greenville Road, 04-Ala-580 KP 12.6/30.7 (PM R7.8/19.1), EA 04258-290810, Alameda County, California	Parsons	01-000262, 01-000263, 01-002197, 01-002204, 01-010779, 01-010780, 01-010781
S-031701a		2006	Jeffrey Rosenthal and Brian F. Byrd	Archaeological Survey Report for the I-580 Eastbound High Occupancy Vehicle Lane Project, East of Greenville Road to Hacienda Drive, Livermore Valley, Alameda County, California	Far Western Anthropological Research Group, Inc.	
S-031701b		2006	Toni Webb	Historical Resources Evaluation Report: I-580 Eastbound HOV Lane Project from East of Greenville Road to Hacienda Drive	JRP Historical Consulting	
S-035826	Caltrans - EA 29082K	2008	Brian F. Byrd	Historic Property Survey Report for the I-580 Westbound High Occupancy Vehicle Lane Project, Greenville Road to San Ramon/Foothill Roads, Alameda County, California: 4-Ala-580, P.M. 8.29/21.43, EA 29082K	Far Western Anthropological Research Group, Inc.	

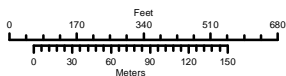
Report Map No. 1
Lassen Livermore



Northwest Information Center

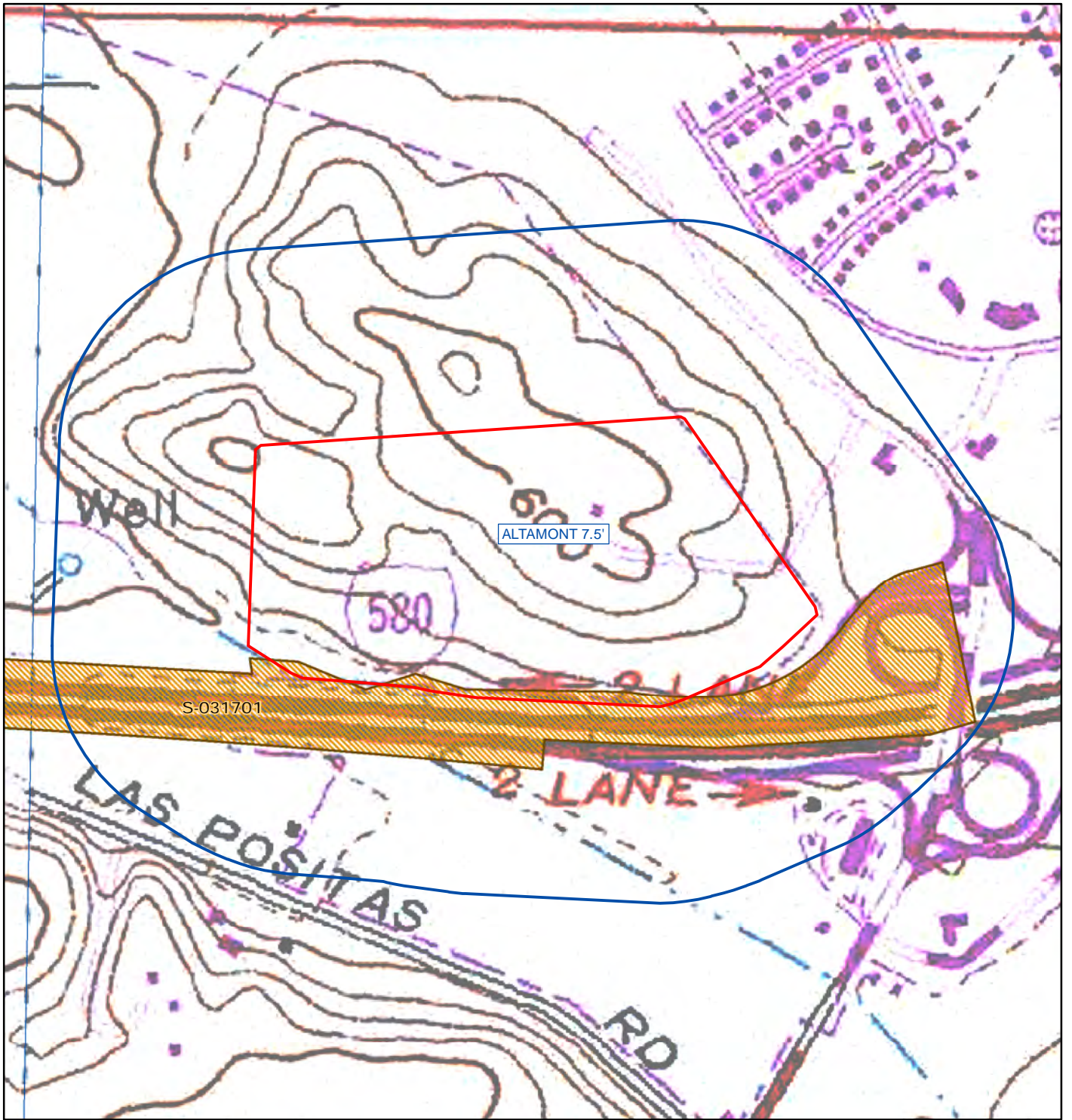
File #17-1919 21 Feb. 2018 J. Akmenkalns

May depict confidential cultural resource locations.
Do not distribute.



- Project Area
- One-Eighth Mile Radius
- Quad outlines
- Reports (polygons)

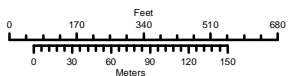
Report Map No. 3
Lassen Livermore



Northwest Information Center

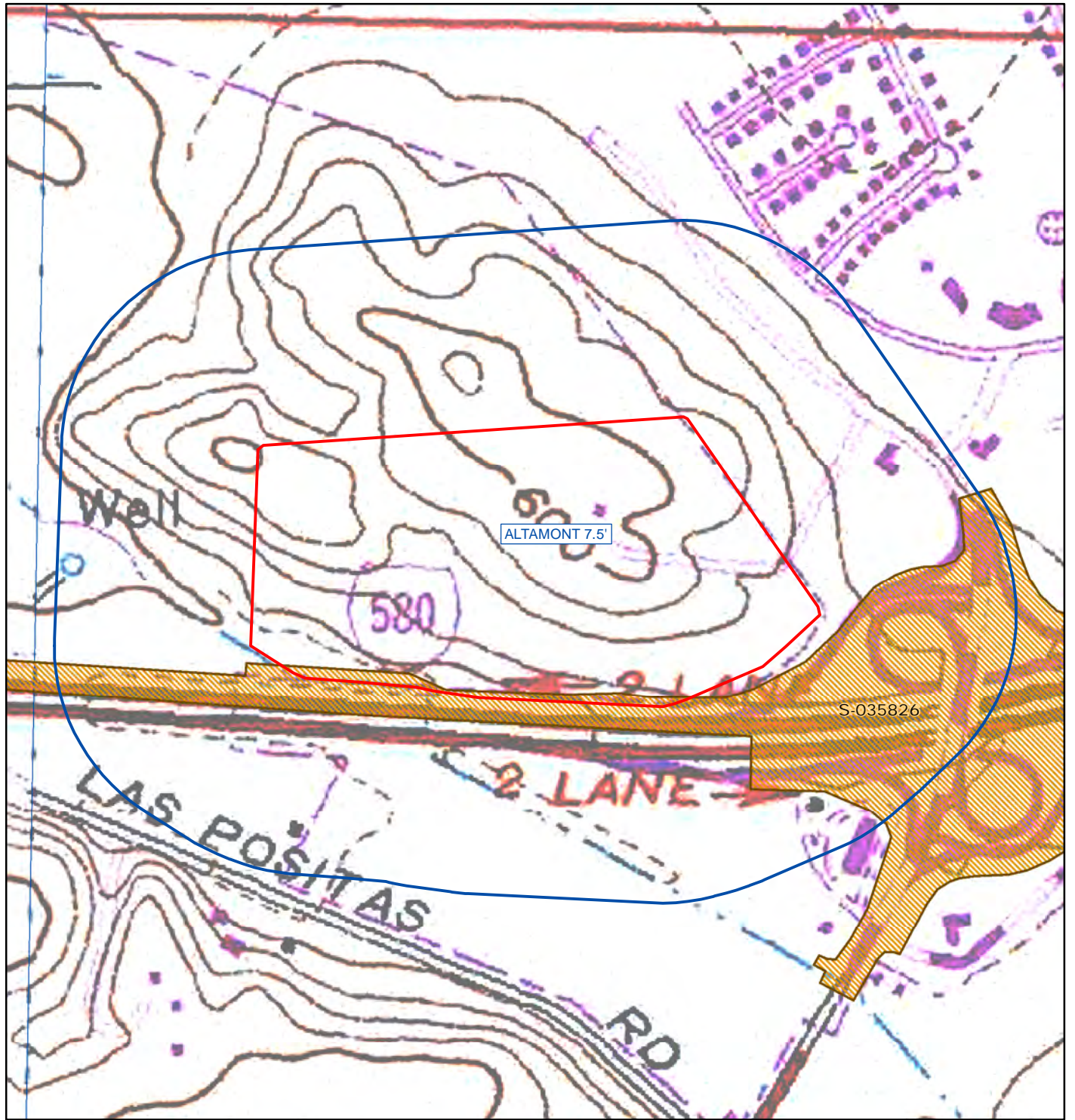
File #17-1919 21 Feb. 2018 J. Akmenkalns

May depict confidential cultural resource locations.
Do not distribute.



- Project Area
- One-Eighth Mile Radius
- Quad outlines
- Reports (polygons)

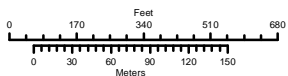
Report Map No. 4
Lassen Livermore



Northwest Information Center

File #17-1919 21 Feb. 2018 J. Akmenkalns

May depict confidential cultural resource locations.
Do not distribute.



- Project Area
- One-Eighth Mile Radius
- Quad outlines
- Reports (polygons)

CONFIDENTIAL

APPENDIX 3

DPR Site Record

**REDACTED PURSUANT TO CALIFORNIA PUBLIC RESOURCES CODE
SECTION 5907**