

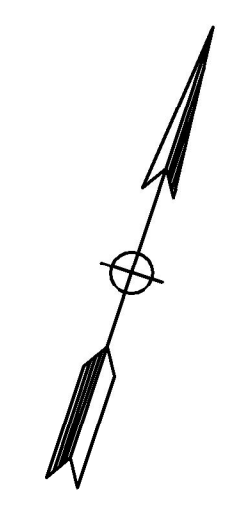
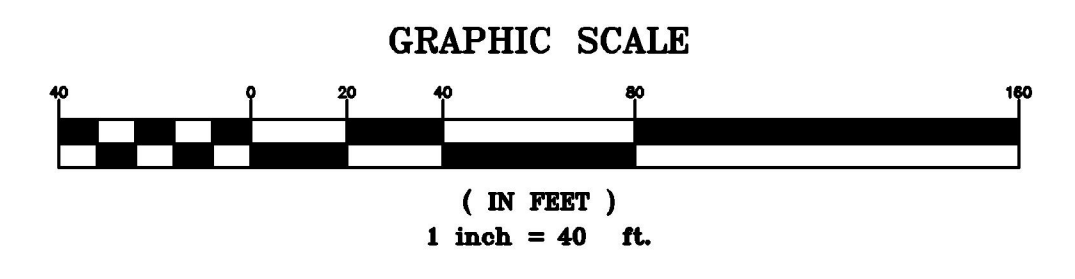


VICINITY MAP

(E) 271 SUN WAY
ZONE: IGC

(E) OPEN AREA
ZONE: PS

(E) 10 SIMAS ST.
ZONE: IGC

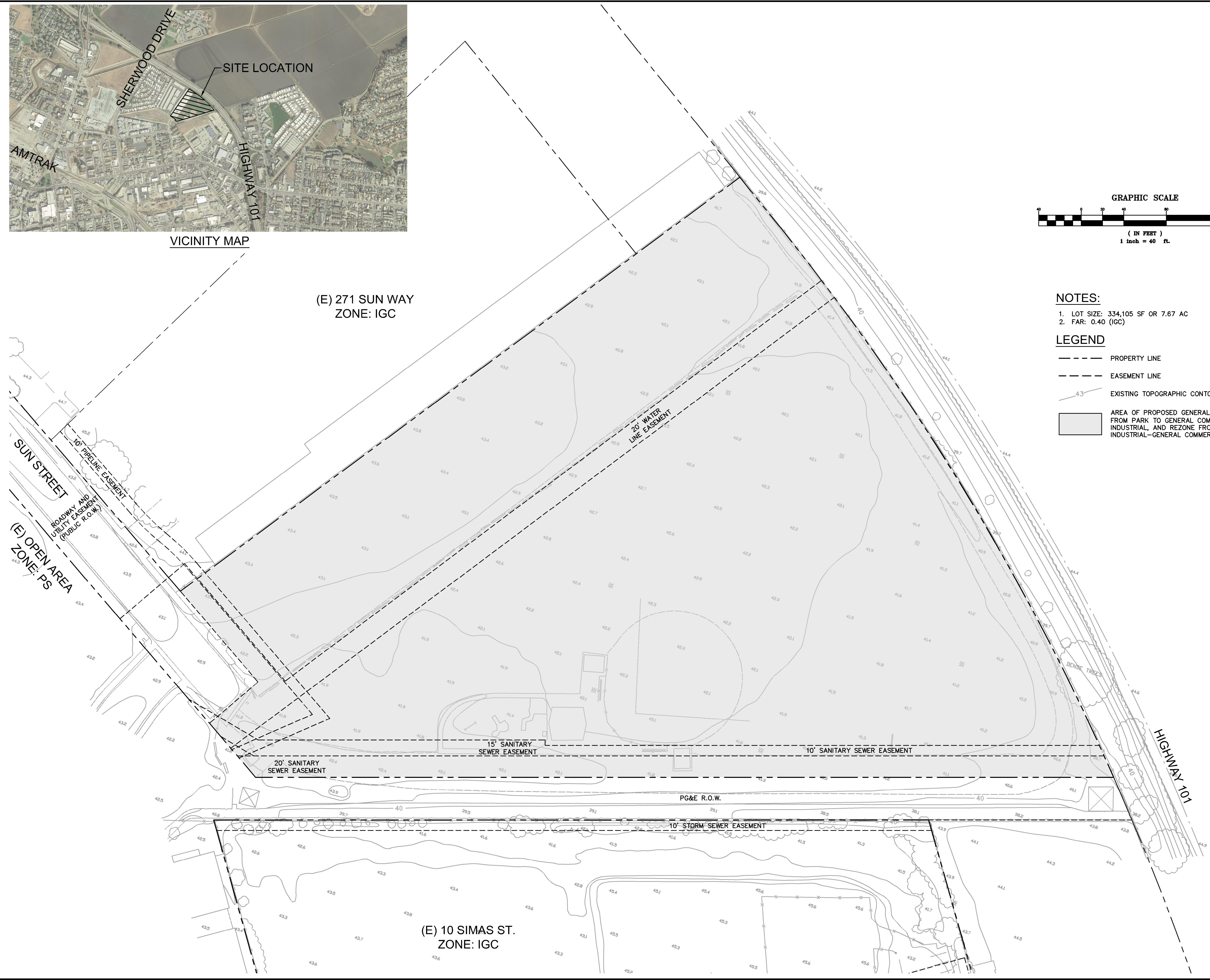


NOTES:

- 1. LOT SIZE: 334,105 SF OR 7.67 AC
- 2. FAR: 0.40 (IGC)

LEGEND

- PROPERTY LINE
- - - EASEMENT LINE
- 4.3 EXISTING TOPOGRAPHIC CONTOUR
- AREA OF PROPOSED GENERAL PLAN AMENDMENT FROM PARK TO GENERAL COMMERCIAL/LIGHT INDUSTRIAL, AND REZONE FROM PARK TO INDUSTRIAL-GENERAL COMMERCIAL



DRAWING NAME: P:\2017\171012_SyWest_Salinas_Res zoning\ENR\PLANNING\SHEETS_Archive\2018-04-18\01_SSR_SITE-PLAN.dwg
PLOT DATE: 04-18-18 PLOTTED BY: phil

Date	Scale	Design	Drawn	Approved	Job No.
04/18/2018	AS SHOWN	AP	AP	KW	20171012
Revisions					
Drawing Number:					