

NOTICE OF EXEMPTION

TO: Office of Planning and Research
1400 - 10th Street, Room 121
Sacramento, CA 95814

FROM: California Tahoe Conservancy
1061 Third St.
South Lake Tahoe, CA 96150

Project Title:**STPUD Sewer Lateral Abandonment*****Project Location – Specific:***

El Dorado County Assessment Numbers: 027-132-012, 027-134-019, 027-134-022, 027-142-014, 027-203-007, 027-203-014, 027-203-015, and 031-095-003. Conservancy-owned properties are on Wildwood Ave., Alder Ave., Bobbey Grey Cir., Werner Salas Dr., and Blue Lakes Ave. in the city of South Lake Tahoe, El Dorado County, CA

Project Location – City:

South Lake Tahoe

Project Location – County:

El Dorado County

Description of Nature, Purpose, and Beneficiaries of Project:

Abandonment of eight (8) sewer laterals. Abandoning the sewer laterals prevents excess water and other foreign materials from entering the sewer system and reduces South Lake Tahoe Public Utility District (STPUD) treatment requirements.

Name of Public Agency Approving Project:

California Tahoe Conservancy

Name of Person or Agency Carrying Out Project:

South Tahoe Public Utility District (STPUD)

Exempt Status:

- Ministerial (Sec.21080(b)(1); 15268)
 Declared Emergency (Sec. 21080(b)(3); 15269(a))
 Emergency Project (Sec. 21080(b)(4); 15269(b)(c))
 Categorical Exemption: Class 1, Section 15301; (See also Cal. Code Regs. tit. 14, § 12102.1)

Reasons why project is exempt:

This project involves the minor alteration of existing facilities (abandonment of existing sewer laterals). This project does not involve any ground disturbance. All project work is done inside existing sewer pipes within the STPUD Public Utility Easement.

Contact Person:

Kelsey Lemming

Area Code
(530)Telephone
543-6046

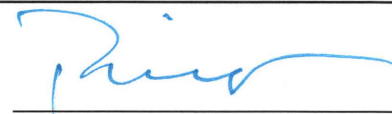
Extension

Date Received for Filing:

Governor's Office of Planning & Research

OCT 18 2018

STATE CLEARINGHOUSE

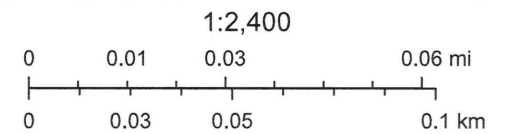

 Jane Freeman
 Deputy Director

NOE Map 1



September 17, 2019

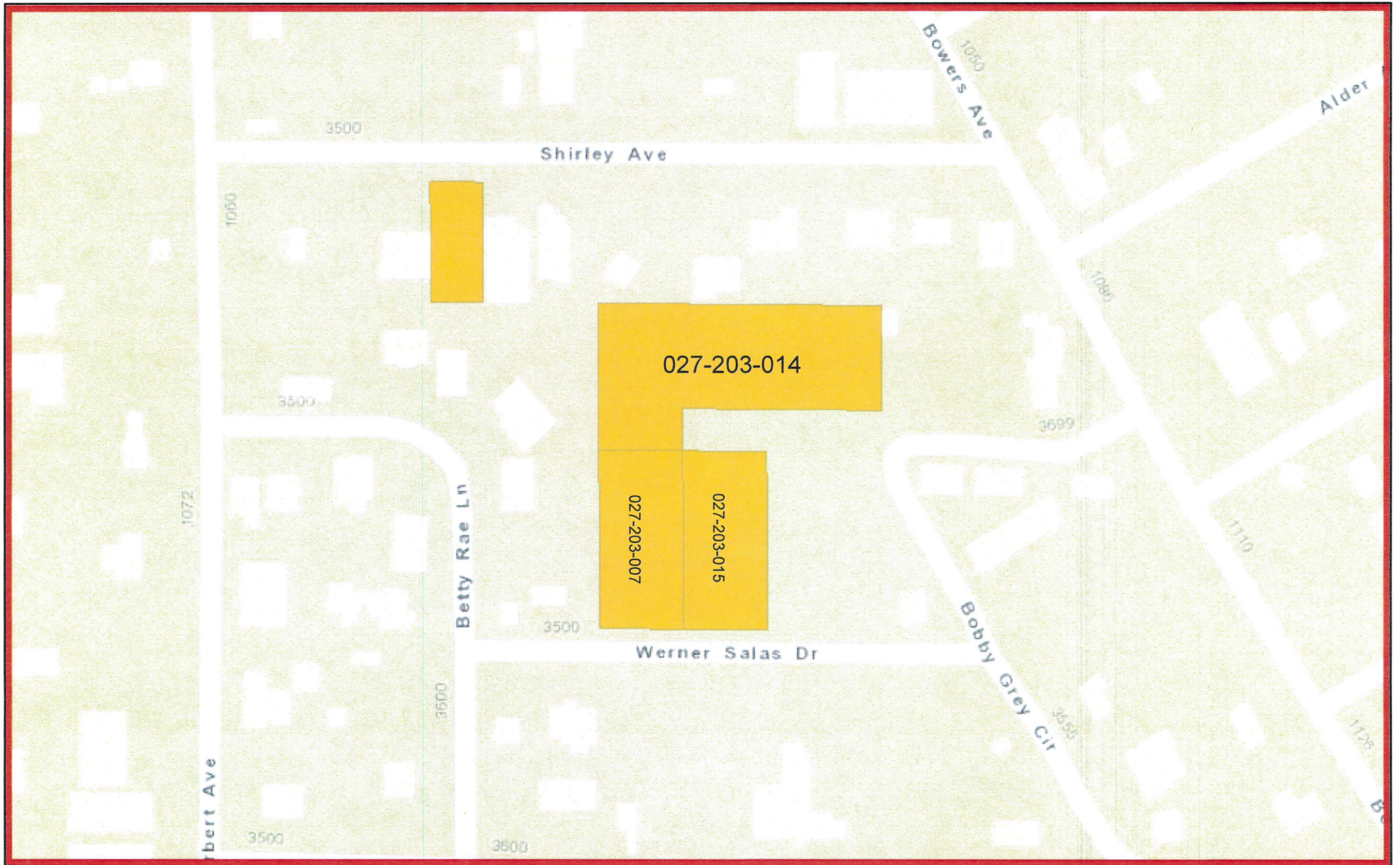
 Conservancy Owned



Sources: Esri, HERE, Garmin, USGS, Intermap, INCREMENT P, NRCan,

ArcGIS WebApp Builder

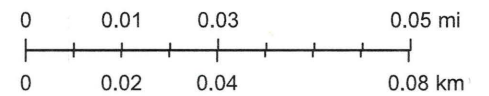
NOE Map 2



September 17, 2019

 Conservancy Owned

1:2,040



Sources: Esri, HERE, Garmin, USGS, Intermap, INCREMENT P, NRCan,

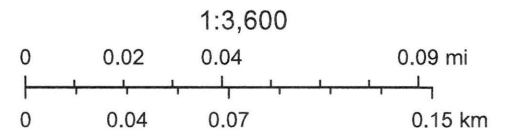
ArcGIS WebApp Builder

NOE Map 3



September 17, 2019

 Conservancy Owned



Sources: Esri, HERE, Garmin, USGS, Intermap, INCREMENT P, NRCan,

ArcGIS WebApp Builder