

APPENDIX L5
HANFORD ELEMENTARY SCHOOL DISTRICT



June 14, 2019

Gerry Mulligan, Director – Facilities & Operations

Hanford Elementary School District
714 N. White St.
Hanford, CA 93230
gmulligan@hesd.k12.ca.us

RE: Information Request Letter for the KART Transit Station Project

Dear Mr. Mulligan,

UltraSystems has been hired by the Kings County Area Public Transit Agency (KCAPTA) to conduct environmental analysis for the proposed KART Transit Project (Project). UltraSystems is currently in the process of preparing environmental analysis for the proposed project, including its potential impacts on public services. UltraSystems needs your department's input on potential environmental impacts.

This letter is to request information from the Hanford Elementary School District regarding the proposed project.

The proposed project is located east of Harris Street, west of Brown Street, north of East 7th Street, and south of the alley located between 9th Street and 8th Street in the City of Hanford. The approximately 4-acre project site has been previously developed, and is located in the Downtown Mixed-Use Zoning District.

The KART Transit Project would include construction of a transit station and commercial development. The proposed project would include a large central passenger waiting area, employee break room, training room on the first floor, and leasable office space on the second and third floor. On-site bus parking and off-site parking would also be constructed. See attached **Project Location Map** and **Station Layout Map**.

It would be much appreciated if you would please answer the questions below via email no later than Monday June 24, 2019.

Please send your answers to me at mpartridge@ultrasystems.com. If you have any questions I can be reached via email or by phone at: 949-788-4900, extension 222.

1. Please provide a list of schools that would serve the project site.
2. What is the current school capacity for affected schools?
3. What is the current enrollment for affected schools?



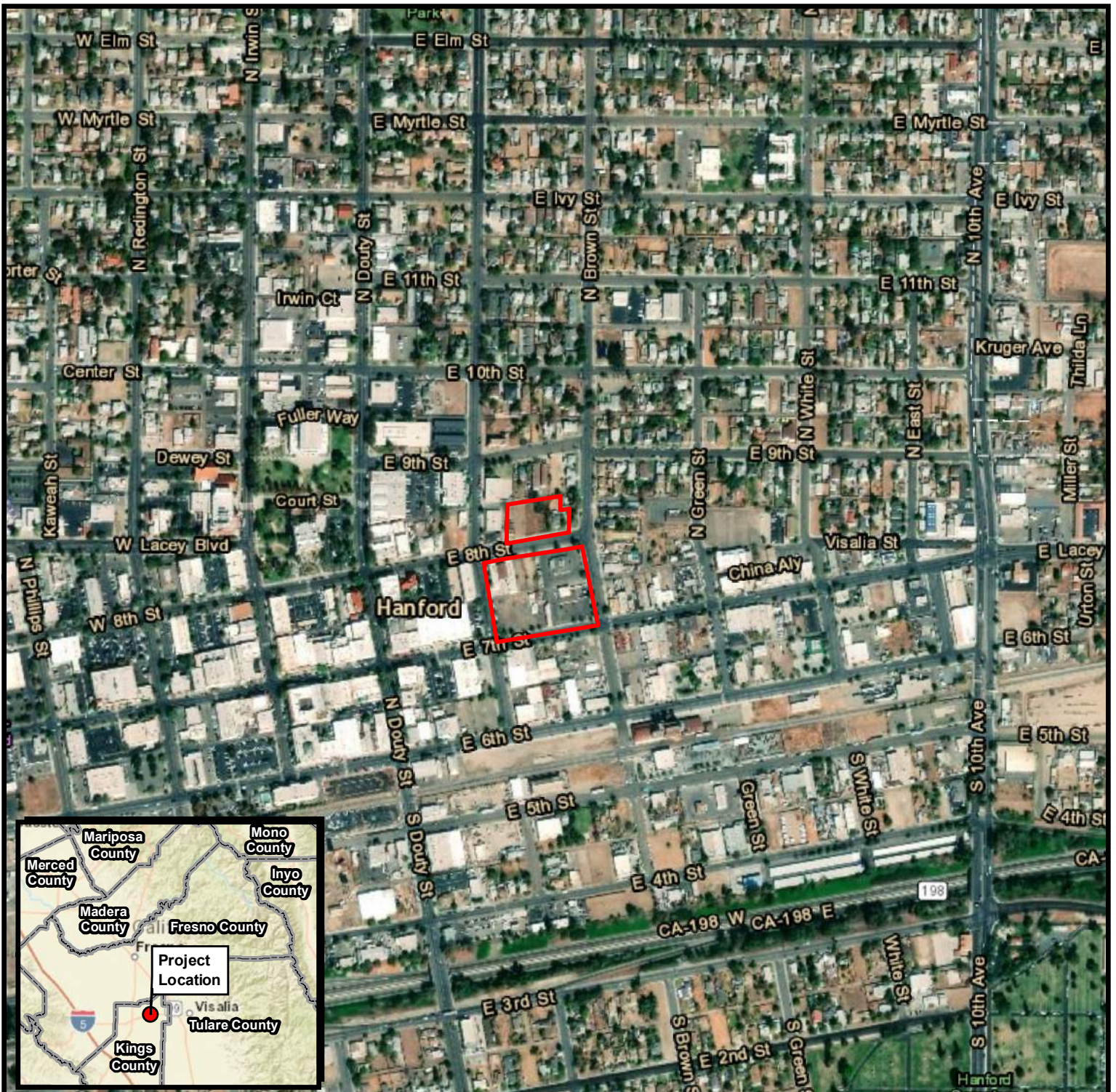
4. Do you anticipate any potential environmental impacts from the proposed project related to public school facilities?
5. If the proposed project has the potential to impact public school facilities, what mitigation, if any, do you recommend to reduce potential impacts?
6. Are there any other issues you see with the proposed project related to public school facilities? If so, please describe.

Best Regards,

A handwritten signature in black ink, appearing to read "MP", with a long horizontal flourish extending to the right.

Margaret Partridge, AICP, LEED Green Associate, ENV SP
Senior Project Manager
UltraSystems
16431 Scientific Way
Irvine, CA 92618
949-788-4900, extension 222
mpartridge@ultrasystems.com

Attachments: Project Location Map and Station Layout Map



Disclaimer: Representations on this map or illustration are intended only to indicate locations of project parameters reported in the legend. Project parameter information supplied by others (see layer credits) may not have been independently verified for accuracy by UltraSystems Environmental, Inc. This map or illustration should not be used for, and does not replace, final grading plans or other documents that should be professionally certified for development purposes.

Path: J:\Projects\7014_Kings_County_Kart\MXD\7014_Kings_County_Kart_Project_Location_2019_05_14.mxd

Date

Service Layer Credits: Esri, HERE, Garmin, © OpenStreetMap contributors, Sources: Esri, HERE, Garmin, USGS, Intermap, INCREMENT P, NRCan, Esri Japan, METI, Esri China (Hong Kong), Esri Korea, Esri (Thailand), NGCC, © OpenStreetMap contributors, and the GIS User Community, Esri, HERE, Garmin, © OpenStreetMap contributors, and the GIS user community, Source: Esri, DigitalGlobe, GeoEye, Earthstar Geographics, CNES/Airbus DS, USDA, USGS, AeroGRID, IGN, and the GIS User Community, Kings County Jan. 2018; UltraSystems Environmental, Inc., 2019

Scale 1:7,200




0 300 600 Feet

0 100 200 Meters

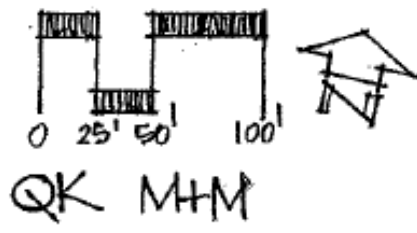
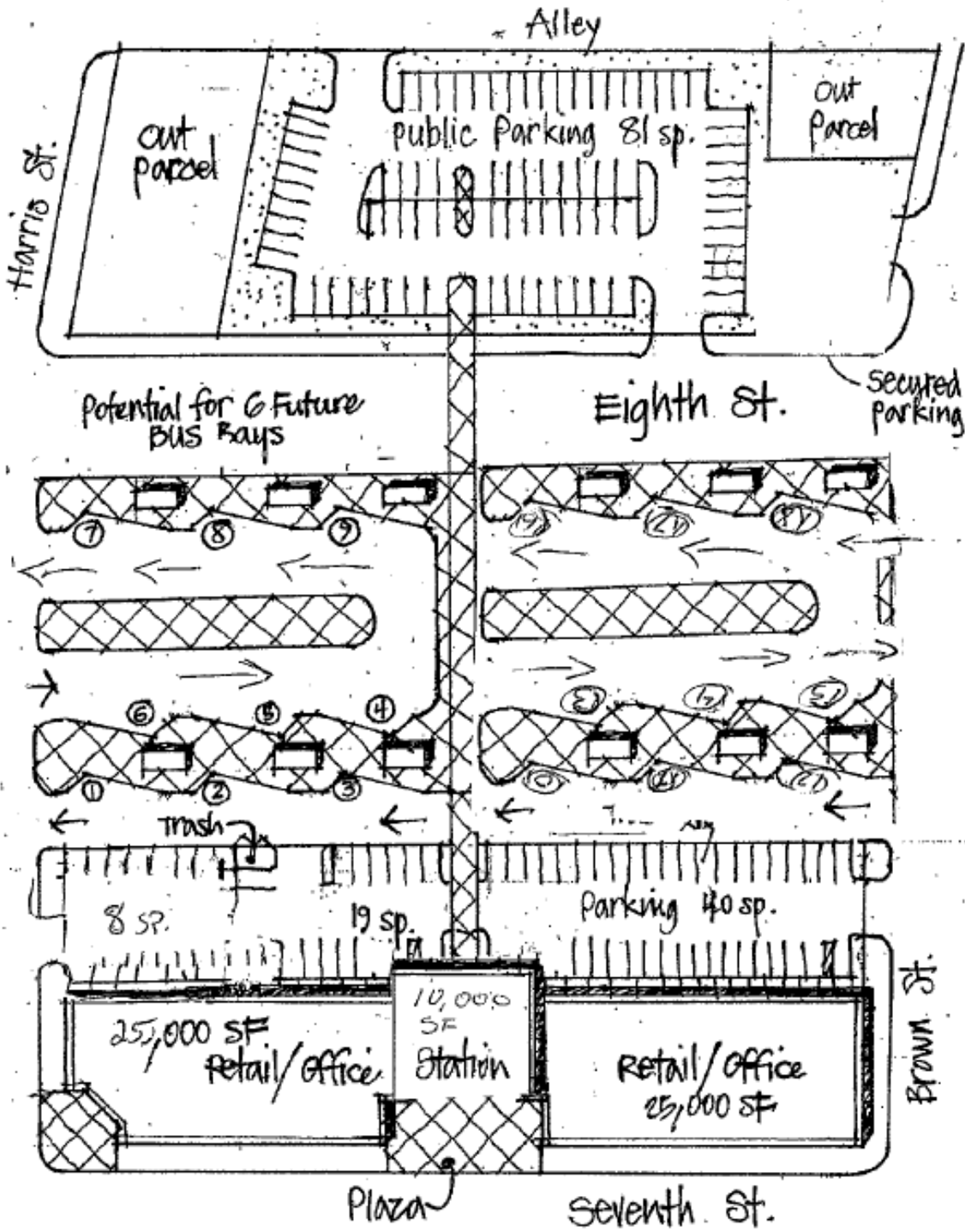
Legend

 Project Boundary

KART Transit Station

 Project Location





CONCEPT STUDY C-1
 New KART Station Facility
 Hanford, CA
 7-26-18

Disclaimer: Illustration provided by Kings County Area Public Transit Agency, who has indicated that the information is true and correct. No other warranties are expressed or implied.

Sources: Kings County Area Public Transit Agency, July 26, 2018

From: Mulligan, Gerry <gmulligan@hanfordesd.org>
Sent: Wednesday, June 26, 2019 2:03 PM
To: Margaret Partridge <mpartridge@ultrasystems.com>
Cc: Endo, David <dendo@hanfordesd.org>
Subject: RE: Information Request Letter for the KART Transit Station Project

Hello Margaret, sorry for the delay.

1. Please provide a list of schools that would serve the project site.
 - * **Lee Richmond Elementary School and JFK JR. High School are designated within the boundary of this project.**
2. What is the current school capacity for affected schools?
 - * **Lee Richmond capacity is 436.**
 - * **JFK JR. High capacity is 700**
3. What is the current enrollment for affected schools?
 - * **Lee Richmond current enrollment is 458**
 - * **JFK JR. High current enrollment is 597**
4. Do you anticipate any potential environmental impacts from the proposed project related to public school facilities?
 - * **Potential emission increase and traffic congestion**
5. If the proposed project has the potential to impact public school facilities, what mitigation, if any, do you recommend to reduce potential impacts?
 - * **Zero emission busses and stops near schools.**
6. Are there any other issues you see with the proposed project related to public school facilities? If so, please describe.