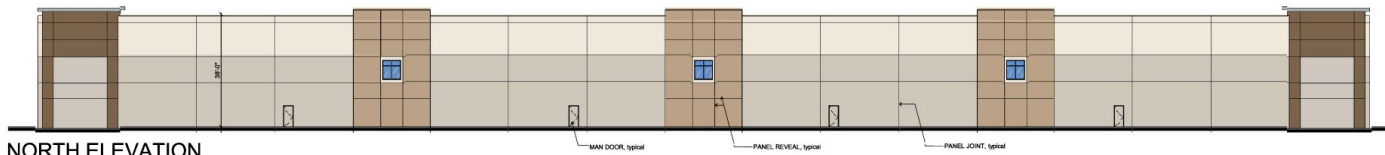




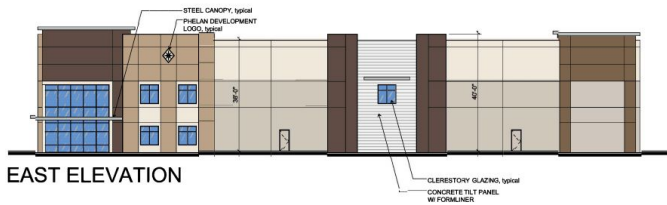
WEST ELEVATION

	TILT-UP CONCRETE WALL PANEL WALL PANEL FIELD COLOR SHERMAN WILLIAMS - #2015 - CREAMY
	TILT-UP CONCRETE WALL PANEL WALL PANEL FIELD COLOR SHERMAN WILLIAMS - #2043 - WORLDLY GRAY
	TILT-UP CONCRETE WALL PANEL WALL PANEL ACCENT COLOR SHERMAN WILLIAMS - #8108 - LANTANA
	TILT-UP CONCRETE WALL PANEL WALL PANEL ACCENT COLOR SHERMAN WILLIAMS - #8102 - SLA CHEST
	TILT-UP CONCRETE WALL PANEL WALL PANEL ACCENT COLOR SHERMAN WILLIAMS - #8101 - BUCKWOOD DARK BROWN
	1" INSULATED DUAL PANEL MEDIUM PERFORMANCE PINK HISTACOL PAPERGLASS GLAZING CLEAR ANODIZED ALUMINUM MULLIONS
	1 1/2" MEDIUM PERFORMANCE PINK HISTACOL PAPERGLASS GLAZING CLEAR ANODIZED ALUMINUM MULLIONS

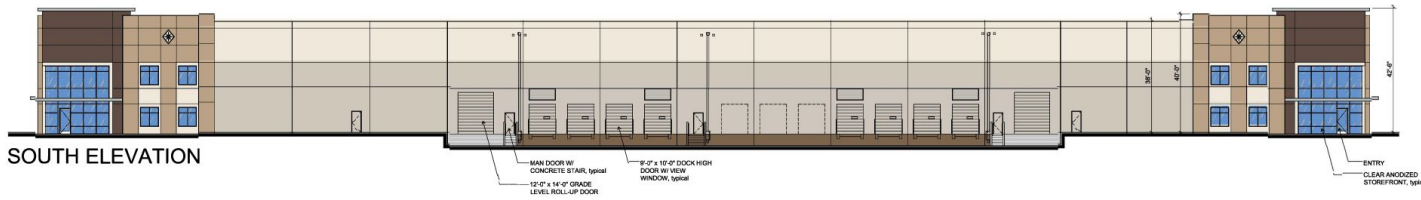
LEGEND



NORTH ELEVATION



EAST ELEVATION



SOUTH ELEVATION

Date: 10/4/2019

Not to scale



Figure provided by Phelan Development

Figure 6b Site Elevation

Phelan Development
9th Street and Vineyard Ave Warehouses
City of Rancho Cucamonga

