

APPENDIX C



CULTURAL RESOURCES TECHNICAL MEMORANDUM

Date: January 10, 2020
To: Petralogix Engineering, Inc.
From: Solano Archaeological Services
Subject: Cultural Resources Study – Elk Grove Center Project, Sacramento County, California

INTRODUCTION

This technical memorandum summarizes the background research, Native American outreach, pedestrian survey, and findings for the Elk Grove Center Project (Project). The Project is subject to California Environmental Quality Act (CEQA) requirements, and Solano Archaeological Services (SAS) has prepared this technical memorandum to support those needs.

PROJECT LOCATION

The current Elk Grove Center facility has the address of 10051 Big Horn Blvd, Elk Grove, California, 95757, approximately one mile west of Highway 99. The project area is situated on the *Florin, California* topographic 7.5-minute quadrangle, Township 6 North, Range 5 East, Section 11.

PROJECT DESCRIPTION

The Elk Grove Center is a State approved educational center for Cosumnes River College. As part of the funding process for a State of California Capital Outlay, Cosumnes River College proposes to construct an additional instructional building comprising approximately 15,200 square feet adjacent to the existing instructional building that lies immediately to the northeast.

REGULATORY SETTING

CEQA requires that public agencies having authority to finance or approve public or private projects assess the effects of the projects on cultural resources. Cultural resources include buildings, sites, structures, objects, or districts, each of which may have historical, architectural, archaeological, cultural, or scientific significance. CEQA states that if a proposed project would result in an effect that may cause a substantial adverse change in the significance of a significant cultural resource (termed a “historical resource”), alternative plans or mitigation measures must be considered. Because only significant cultural resources need to be addressed, the significance of cultural resources must be determined before mitigation measures are developed.

CEQA §5024.1 (Public Resources Code §5024.1) and §15064.5 of the State CEQA Guidelines (14 California Code of Regulations [CCR] §15064.5) define a historical resource as “a resource listed or eligible for listing on the California Register of Historical Resources.” A historical resource may be eligible for inclusion in the California Register of Historical Resources (CRHR) if it:

- 1) Is associated with events that have made a significant contribution to the broad patterns of California’s history and cultural heritage;

- 2) Is associated with the lives of persons important to our past;
- 3) Embodies the distinctive characteristics of a type, period, region, or method of construction; represents the work of an important creative individual; or possesses high artistic values; or
- 4) Has yielded, or may be likely to yield, information important to prehistory or history.

In addition, CEQA also distinguishes between two classes of archaeological resources: archaeological sites that meet the definition of a historical resource, and “unique archaeological resources.” An archaeological resource is considered “unique” if it:

- Is associated with an event or person of recognized significance in California or American history or of recognized scientific importance in prehistory;
- Can provide information that is of demonstrable public interest and is useful in addressing scientifically consequential and reasonable research questions;
- Has a special or particular quality such as oldest, best example, largest, or last surviving example of its kind;
- Is at least 100 years old and possesses substantial stratigraphic integrity; or
- Involves important research questions that historical research has shown can be answered only with archaeological methods (Public Resources Code §21083.2).

According to the CEQA Guidelines, a project with an effect that may cause a substantial adverse change in the significance of a historical resource or a unique archaeological resource is a project that may have a significant effect on the environment (14 CCR §15064.5[b]). CEQA further states that a substantial adverse change in the significance of a resource means the physical demolition, destruction, relocation, or alteration of the resource or its immediate surroundings such that the significance of a historical resource would be materially impaired.

The CEQA Guidelines (14 CCR §15064.5[e]) also require that excavation activities be stopped whenever human remains are uncovered, and that the county coroner be called in to assess the remains. If the county coroner determines that the remains are those of a Native American, the Native American Heritage Commission must be contacted within 24 hours, and the provisions for treating or disposing of the remains and any associated grave goods as described in CCR §15064.5 must be followed.

NATURAL AND CULTURAL SETTING

Existing Environment

The Project area and vicinity are located in the Central Valley (also known as the Great Valley or Great Central Valley), an elongated depression between the Coast Ranges and the Sierra Nevada. The Project area is essentially level and is at an elevation of approximately 35 ft. above mean sea level. The majority of the Project area consists of open leveled former agricultural fields supporting seasonal grasses. The Central Valley was formed during the Quaternary Period, the most recent of the three periods of the Cenozoic era. The Cenozoic geological occurrences are the most important to the Central Valley in terms of the freshwater aquifer formations that make the valley an ideal location for farming and ranching (California Department of Water Resources 2019).

Specifically, the Project area is situated in the Sacramento Valley, a region of the greater Central Valley, and contains sediments deposited from the Sierra Nevada Mountain range. The climatic pattern in the Project area and surrounding region is characterized as Mediterranean, with cool, wet winters and hot, dry summers. Soil studies suggest that the general climate may have been wetter in the past (Tanksley 2003).

However, periods of persistent drought in California occurred between A.D. 912–1112 and A.D. 1210–1350. Shorter drought periods have also been documented over the last 2,000 years based on dendrochronology, soil core borings, and other methods.

Pre-Contact Setting

Due to the plentiful resources and temperate climate described above, the Central Valley was well populated in pre-contact times and served as the location for some of the more substantial village sites known in California. As a result, the area was an early focus for archaeological investigations. Beardsley (1948) and Lillard, Heizer and Fenenga (1939) and others conducted numerous studies that formed the core of our early understanding of upper Central Valley archaeology. Little has been found archaeologically that dates to the Paleo-Indian or the Lower Archaic time periods (10,000-3,000 B.C.) however, archaeologists have recovered a great deal of data from sites occupied beginning in the Middle Archaic period (3,000-1,000 BC). At this time, broad regional patterns of foraging subsistence strategies gave way to more intensive procurement practices, which have been subdivided into three archaeological time periods/cultural patterns. These assemblages are discussed in detail in Moratto (1984) and summarized here.

The Windmill Pattern (3,000-1,000 BC) of archaeological assemblages included an increased emphasis on acorn use as well as a continuation of hunting and fishing activities. Ground and polished chert, twined basketry, baked-clay artifacts and worked shell and bone were hallmarks of Windmill culture. Widely ranging trade patterns brought goods in from the Coast Ranges and trans-Sierran sources as well as closer trading partners. Distinctive burial practices identified with the Windmill Pattern also appeared in the Sierra foothills, indicating possible seasonal migration into the Sierra.

The Berkeley Pattern (1,000 BC to AD 500) represented a greater reliance on acorns as a food source than was seen previously. Distinctive stone and shell artifacts distinguished it from earlier or later cultural expressions. The Berkeley Pattern appears to have developed in the Bay Area and was spread through the migration of Plains Miwok Indians.

The Augustine Pattern (AD 500 to Historic Era) may have been stimulated by the southern migration of Wintuan people from north of the Sacramento Valley. Their culture was marked by increasing populations resulting from more intensive food procurement strategies, as well as a marked change in burial practices, increased trade activities and a well-defined ceramic technology.

Ethnographic Setting

The project area lies within the traditional lands of the Plains Miwok Native American cultural group. The term “Miwok” refers to a specific Utian language group, and the subdivisions refer to smaller divisions within the broader language group. The Plains Miwok were one of five divisions of the Eastern Miwok, and inhabited the Delta-Plains region of the Central Valley (Levy 1978). The application of a lexicostatistic model for language divergence applied to the Plains Miwok dialect suggested it has been a complex linguistic entity for 2,000 years (Levy 1978:398), and researchers infer this indicates the group inhabited the region for at least that long.

The political organization of the Plains Miwok centered on the tribelet; a group composed of 300 to 500 people (Levy 1978:410). Each tribelet consisted of several villages that controlled a specific area of resources. These tribelets were divided along lineages localized to specific geographic settings, which represented a village site and associated satellite sites where the seasonal collection of resources occurred (Levy 1978). Each tribelet settlement was the headquarters of a localized patrilineage whose name

reflected their origin location. Each settlement had a speaker who acted as the tribelet chief's representative to their own individual settlements (Levy 1978).

The settlement patterns of the Plains Miwok coincided with their subsistence patterns and practices. The Plains Miwok have been characterized as intensive hunter-gatherers with an emphasis on gathering (Bennyhoff 1977). The seasonal availability of floral resources dictated the limits of the group's economic pursuits. Their territory covered six seasonally productive biotic communities, and they had a rich body of resources to choose from in each of these zones. The storage of floral resources in the form of acorn granaries allowed for more stable use of the resource base (Bennyhoff 1977). Before adoption of the acorn as a resource base, archaeological evidence suggests people in the same geographic area suffered from seasonal nutritional deprivation (Schultz 1981).

The bow and arrow was both the principal hunting tool and primary weapon of war among the Plains Miwok. The bows were made of the wood of oak, willow, pepperwood, maple or hazel and formed into the "sinew-backed" variety: several layers of sinew were glued together and glued to the back of the bow with an adhesive extracted from soaproot (Levy 1978:405). Arrows were made in several different types. The arrows used for hunting large game or for war were made with a foreshaft designed to stay in the victim even if the main shaft was broken off; this is in contrast to ordinary hunting arrows where the arrowhead is attached directly to the main shaft (Levy 1978:405-406). The Plains Miwok used laurel-leaf points for their arrows and three-feathered radical fletching for their arrows, usually from red tail hawk feathers (Levy 1978:406). Most quivers were fashioned of otter or fox skin, and arrows were usually stored in a buckskin bag in the owner's home (Levy 1978:406).

The Plains Miwok produced intricate twined and coiled basketry that was employed for a variety of uses. Cordage from several plants, such as milkweed and hemp, were used in the construction of baskets. Twined basketry was used for gathering seeds, manufactured into cradles, used for open-air winnowing, and for storage. Coiled basketry was watertight and used for cooking and serving acorn mush (Levy 1978). The patterns woven into basketry were an expression of material adornment and decoration, which made them elements of material culture as well as utilitarian items. Each pattern represented something in the cultural worldview, such as an important animal or plant, and may have further represented moieties (Barrett and Gifford 1933).

Shamanism was practiced amongst the Miwok, which is in contrast to the secret-society type of cult system practiced by other tribes in many areas of north-central California. A number of different types of shamans were recognized. The spirit doctor or sucking shaman was the most important within Miwok religion. They obtained their power through dreaming during normal sleep or hallucinations facilitated by the use of *Datura* (a genus of nine species of poisonous vespertine flowering plants). These spirit doctors cured patients by getting the help of guardian spirits in their hallucinatory vision quests, and locating the diseased object inside of a person and sucking it out (Levy 1978:412).

The Plains Miwok possessed many elaborate religious ceremonies, the number and type of which held at any given village were determined by the position of that village within the tribelet. The most important ceremonies were only held in the capital of the lineage settlement. The geographical location of a tribelet also dictated the ceremonies held; a wider variety of ceremonies were held in the Central Valley than in other regions occupied by the Miwok (Levy 1978:412).

Historic Setting

Within the vicinity of the Project area the dominant themes of historic-era development include early Euro-American settlement, agriculture, and transportation. The evolution of each of these pursuits is intricately intertwined and constitutes the basic foundations of historic settlement and economic and industrial activity in the region.

Early Settlement

Permanent Euro-American settlement in the Sacramento Valley began when the Spanish and subsequently colonial Mexican governments issued large land grants to various individuals, often in return for military or other services rendered to the government. One of the grantees was Swiss immigrant John Augustus Sutter who first settled on his 48,839-acre “Nueva (New) Helvetia” land grant. He established an agricultural and trading colony at New Helvetia (which in English means “New Switzerland” after Sutter’s home country) and built a substantial fort at the confluence of the Sacramento River and American River. The design of this outpost was influenced by Fort Vancouver, the principal trading station of the Columbia Department, operated by the Hudson's Bay Company, which Sutter visited in 1838 before entering Alta California. From 1839 until January 1848, Sutter’s Fort served as a destination for immigrants coming into California and the present-day City of Sacramento initially grew up around the fort (Dillon 1967).

The early development of the City of Sacramento is directly attributable to the onslaught of gold seekers rushing to the Sierra Nevada foothills after the first notable discovery of gold in Coloma at Sutter’s sawmill in 1848. The little riverside settlement – now occupied by the “Old Sacramento” area, that served Sutter’s holdings in the region quickly took on the role of a gold rush port and staging area as ocean-going ships and riverboats used the Sacramento River to bring goods and passengers to the mines. Sutter’s son, John Jr., who joined his father in September 1848, laid out a grid of streets extending from the waterfront, and named the nascent town Sacramento. His plan established numbered streets running north to south, and lettered streets running east to west. Each block was divided into eight, 80-ft. x 150-ft. lots, four lots on either side of a central alley. By June 1849, there were 100 buildings in Sacramento, and by October the town had 2,000 permanent residents with up to another 5,000 passing through at any given time. The new town was centered on the embarcadero, or Front Street, and inland to the east along J Street. The Old Sacramento area represents a small fraction of the wharfs, warehouses, saloons, and retail shops that once crowded along the waterfront and J Street, the main avenue to the mines. Only in the years that followed did more specialized businesses replace the “general merchants” and shopkeepers of the early years (Brienes et al. 1981).

Elk Grove

Elk Grove is situated on the *Rancho de los Omochumnes* which was granted to Jared Sheldon in 1844. James and Sarah Hall built the first of Elk Grove’s buildings in 1850. The single building was named Elk Grove House and served as a hotel and stage stop along the Sacramento to Stockton stage lines (Gudde 1998). The town moved to its second location in 1868 to what is now Elk Grove Boulevard and Highway 99. The town expanded at this location until 1876, when the town began to move closer to the completed Central Pacific Railroad approximately one mile away. The proximity to the railroad would make it easier for Elk Grove to expand and serve the growing agricultural community (elkgrowvehistoricalsociety.com/history-town-of-elk-grove). For the next several decades, Elk Grove grew slowly and remained predominately an agricultural community. It would not become incorporated until 2000 in response to the influx of residential developments and urbanization to support Sacramento and Bay Area commuter housing. The town has been one of the fastest growing cities in the last 20 years (USA Today 2019).

NATIVE AMERICAN OUTREACH

The Public Resources Code Sections 21080.1, 21080.3.1, and 21080.3.2 (AB 52) requires public agencies to consult with the appropriate California Native American tribes identified by the Native American Heritage Commission (NAHC) for the purpose of mitigating impacts to cultural resources.

On December 26, 2019, SAS emailed a letter and a map depicting the project area and surrounding vicinity to the NAHC. On behalf of the LRCCD, the letter requested a Sacred Lands File (SLF) search of the project area, facilitation of AB 52 consultation, and a list of Native American consultants who should be contacted about the proposed Project (see Attachment B for Native American consultation documentation). On December 27, 2019, Ms. Nancy Gonzalez-Lopez, Staff Services Analyst for the NAHC, replied in an emailed letter that the SLF search was completed with negative results. Ms. Gonzalez-Lopez also supplied a list of local Native Americans to inform about the Project, request information on unrecorded cultural resources that may exist in the project area, and gather official Project recommendations. On January 3, 2020, SAS mailed letters to the following Native Americans identified by the NAHC:

- Rhonda Morningstar Pope, Chairperson (Buena Vista Rancheria of Me-Wuk Indians)
- Sara Dutschke Setchwaelo, Chairperson (Ione Band of Miwok Indians)
- Pamela Cubbler, Treasurer (Colfax-Todds Valley Consolidated Tribe)
- Clyde Prout, Chairperson (Colfax-Todds Valley Consolidated Tribe)
- Cosme Valdez, Chairperson (Nashville Enterprise Miwok-Maidu-Nishinam Tribe)
- Regina Cuellar, Chairperson (Shingle Springs Band of Miwok Indians)
- Grayson Coney, Cultural Director (Tsi Akim Maidu)
- Don Ryberg, Chairperson (Tsi Akim Maidu)
- Gene Whitehouse, Chairperson (United Auburn Indian Community of the Auburn Rancheria [UAIC])
- Raymond Hitchcock, Chairperson (Wilton Rancheria)

On January 7, 2020, and January 10, 2020, SAS contacted the above tribal contacts via email to gather their input about the Project. To date, no responses have been received.

CALIFORNIA HISTORICAL RESOURCES INFORMATION SYSTEM (CHRIS) RECORDS SEARCH

On January 2, 2020, SAS conducted a records search (IC No. SAC-20-2) at the North Central Information Center (NCIC), of the California Historical Resources Information System at California State University, Sacramento. The NCIC archives were reviewed for previously known or recorded cultural resources, studies, and isolates within the project area and a half-mile radius. The NCIC records search included, but was not necessarily restricted to, a review of the following sources:

- *The National Register of Historic Places* (Historic Properties Directory, California Office of Historic Preservation 2002);
- *The California Register of Historic Places* (Historic Properties Directory, California Office of Historic Preservation 2002);
- *The California Historical Landmarks* (California Office of Historic Preservation 1996);
- *The California Points of Historical Interest* (California Office of Historic Preservation 1992); and
- *The California Inventory of Historic Resources* (California Department of Parks and Recreation 1976).

The records search results indicate that no previously documented cultural resources were identified directly in the project area. However, five resources were documented within a half-mile radius of the project area including one historic-era residence and farm (P-34-1176) immediately adjacent to the project area (see Attachment C for records search documentation). These resources are summarized in Table 1 below.

Table 1. Previously Recorded Resources Within a Half-Mile Radius of the Project Area

Site No. (P-34-00-)	Recorder	Site Description	Date Originally Recorded
1176	Pitsenberger and Jordan	Historic-era single family residence and farm/ranch	2004
1426	Gerry and Lawson	Historic-era privies/dumps/trash scatters	2007
1864	Gerry and Lawson	Historic-era single family property	2007
5190	Lawson	Historic-era single family property	2016
5191	Nayyar	Historic-era farm/ranch	2017

P-34-1176 (8355 Old Poppy Ridge Road): This resource was originally recorded in 2004 by Pacific Legacy and consisted of a residence, barn, stable, dairy processing structure, and shed. The resource was updated in 2007 by Pacific Legacy documenting the demolition of all the structures. The only remaining historic-era artifacts included the remains of a barbed wire fence and sparse rubble from the demolition. The resource was located directly south and east of the Project area.

Three cultural resources studies have been conducted within the project area, covering 100% of the project area. The studies and are summarized in Table 2 below.

Table 2. Previously Conducted Studies within the Project Area

Report #	Author	Title	Date
05978	Edwards	Cultural Resources Inventory and Evaluation Poppy Ridge Property	2004
11277	Jordan and Anderson	Cultural Resources Inventory for the Poppy Ridge Addendum Sacramento County, California	2006
12335	Nayyar and Davis	Cultural Resources Identification Study for Big Horn Boulevard and Bilby Road Extension Projects, City of Elk Grove, Sacramento County, California	2017

There have been eleven cultural resources studies conducted within a half-mile radius of the project area. These studies are summarized in Table 3 below.

Table 3. Previously Conducted Studies within a Half-Mile Radius of the Project Area

Report #	Author	Title	Date
----------	--------	-------	------

00549	Peak	Letter Report: Cultural Resource Assessment of the Henry Backer Land Division on APN 132-050-42, 43, and 45 (Control No. 80-om-078)	1980
02392	Peak and Gerry	Cultural Resources Assessment for the Laguna Ridge Specific Plan and Environmental Impact Report, Sacramento County, California	1999
05959	Peak and Associates, Inc.	Cultural Resource Assessment for the Lent Ranch General Plan Amendment and Rezone	1998
05971	Peak and Peak	Cultural Resource Assessment for the Grove at Laguna Ridge, City of Elk Grove	2004
05977	Peak and Peak	Cultural Resource Assessment for the Moser Property City of Elk Grove	2003
06461	Peak and Associates, Inc.	Determination of Eligibility and Effect for the Whitelock Parkway and Elk Grove Boulevard Improvements	2005
08540	Peak	Determination of Eligibility and Effect for the Proposed Los Rios Project, City of Elk Grove, California	2007
08541	Peak	Determination of Eligibility and Effect for the Proposed Richland Project, City of Elk Grove, California	2007
08910	Peak	Determination of Eligibility and Effect for 8415 Poppy Ridge Road, City of Elk Grove, California	2007
12336	Peak and Associates, Inc.	Determination of Eligibility and Effect for the Backer South Project, City of Elk Grove, Sacramento County, California	2016
12392	Peak and Lawson	Determination of Eligibility and Effect for the Madiera South Project, City of Elk Grove, Sacramento County, California	2015

Historic Map Review

SAS also reviewed a series of historic USGS topographic maps and historic aerial photographs to gather information on past land use and historic development in the Project area. According to the 1855 General Land Office (GLO) Plat maps the vicinity of the Project area showed little historical development. The Project area itself is situated in flat open land near a fenced ranch property to the west.

Review of the 1910 *Florin, California* USGS 7.5' topographic map, shows the Project area was undeveloped with one structure and a road nearby to the east. The 1942 *Florin, California* USGS 7.5' topographic map depicts two structures just south of the Project area and the 1947 aerial depicts the structures south of the Project area and north of Poppy Ridge Road. The ranch structures are partially removed in the 2005 aerial depiction and fully removed by the 2009 aerial (*historicaerials.com*). The Project area remains relatively undeveloped agricultural land until 2012, when the Cosumnes River College Elk Grove Center parking lot is depicted. The completed Elk Grove Center is depicted on the 2014 aerial.

FIELD SURVEY

Methods

On January 3, 2020, SAS archaeologists Susan Talcott (Ph.D.) and Amy Wolpert (M.A.) conducted an intensive pedestrian survey of the Project area utilizing 15 meter transects. Rodent burrows, recent tire tracks, and other recent ground disturbances were thoroughly inspected, and the property was documented

with digital photographs. A sub-meter accurate Trimble GPS unit was utilized to verify project area boundaries and locations of previously recorded cultural resources.

Results

The Project area is bordered on the west by the recent extension of Big Horn Boulevard, on the north by the existing Elk Grove Center fencing, on the east partly by existing Elk Grove Center fencing and an open field, and on the south by an open field (formerly part of P-34-001176, which has been destroyed/removed). The Project area was mostly covered in grass with some recent vehicle ground disturbance exposing some soil. Overall, ground surface visibility was approximately 5-10%. There was some modern debris noted in the project area including dried cement patches/spills within vehicle tracks and tractor push piles. SAS did not observe any historic artifacts or evidence of the ranch or residence that was formerly adjacent to the southern Project boundary. See Attachment D photographs for current site conditions.

RECOMMENDATIONS

The NAHC sacred lands file search and the NCIC records search were negative for cultural resources in the Project area. A review of the historic maps concluded that the Project area was open agricultural land. A historic residence and ranch were once just south of the Project area, the residence has since been destroyed/removed. Intensive archaeological survey did not identify any historic-era artifacts associated with the house within the Project area and no pre-contact cultural resources were identified during survey. The Project area is considered to have low archaeological sensitivity due to the lack of previously record pre-contact sites regardless of the Project's proximity to the Cosumnes River and other small waterways. SAS recommends no further management.

In the event that presently undocumented buried archaeological deposits are encountered during any Project-associated construction activity, work must cease within a 50-foot radius of the discovery. A qualified archaeologist must be retained to document the discovery, assess its significance, and recommend treatment. If human remains or any associated funerary artifacts are discovered during construction, all work must cease within the immediate vicinity of the discovery. In accordance with the California Health and Safety Code (Section 7050.5), the San Joaquin County Sheriff/Coroner must be contacted immediately. If the Coroner determines the remains to be Native American, the Coroner will notify the Native American Heritage Commission, which will in turn appoint a Most Likely Descendent (MLD) to act as a tribal representative. The MLD will work with the Applicant and a qualified archaeologist to determine the proper treatment of the human remains and any associated funerary objects. Construction activities will not resume until either the human remains are exhumed, or the remains are avoided via Project construction design change.

REFERENCES

- Barrett, S.A. and E.W. Gifford.
1933 Miwok Material Culture. *Bulletin of the Public Museum of the city of Milwaukee* 2(4):117-376. Milwaukee, Wis.
- Baumhoff, Martin A.
1963 Ecological Determinants of Aboriginal California Populations. *University of California Publications in American Archaeology and Ethnology* 49(2):155-236.
- Bennyhoff, James A., and David A. Fredrickson
1994 A Proposed Integrative Taxonomic System for Central California Archaeology. In *Toward a New Taxonomic Framework for Central California Archaeology*, edited by James A. Bennyhoff and David A. Fredrickson, pp. 15-24. University of California Archaeological Research Facility, Berkeley.
- Beardsley, R.K.
1948 Cultural Sequences in Central California Archaeology. *American Antiquity* 14(1):1-28.
- Beck, Warren A., and Ynez D. Haase
1974 *Historical Atlas of California*. University of Oklahoma Press.
- Bennyhoff, J.A.
1977 Ethnogeography of the Plains Miwok. Center for Archaeological Research at Davis, Publication Number 5.
- Department of Parks and Recreation
1976 *California Inventory of Historic Resources*. Sacramento.
- Gudde, Erwin
1998 California Place Names: The Origin and Etymology of Current Geographical Names. Revised edition. University of California Press, Berkeley.
- Heizer, R. F., editor
1978 Handbook of North American Indians, vol. 8. Smithsonian Institution, Washington.
- Heizer, R. F. and A. B. Elsasser
1980 The Natural World of the California Indians. University of California Press, Berkeley.
- Hoover, M.B., H.E. Rensch, E.G. Rensch, and W.N. Abeloe
2002 *Historic Spots in California*. Fifth edition revised by Douglas E. Kyle. Stanford University Press, Stanford, California.
- Kuchler, A.W.
1977 Map of the Natural Vegetation of California. In M.G. Barbour and J. Major, eds., *Terrestrial Vegetation of California*. New York: Wiley.
- Kroeber, A. L.
1925 Handbook of the Indians of California. Bureau of American Ethnology: Bulletin 78. Washington, U.S.
1970 *Sierra Nevada Natural History*. Berkeley: University of California Press.
1976 Handbook of the Indians of California, reprint of 1925 Bulletin 78, Smithsonian Institution. Dover Publications, New York.
- Levy, R.
1978 Eastern Miwok. In *California*, edited by R.F. Heizer, pp. 398-413. Handbook of North American Indians, vol. 8. W.C. Sturtevant, general editor. Smithsonian Institution, Washington D.C.
- Lillard, J.B., R. F. Heizer and F. Fenenga
1939 *An Introduction to the Archaeology of Central California*. Sacramento: Sacramento Junior College, Department of Anthropology Bulletin 2.
- Merriam, C. H.
1898 Life Zones and Crop Zones of the United States. U.S. Dept of Agric. Bio. Survey Bulletin 10.
- Moratto, Michael J.
1984 *California Archaeology*. Academic Press, San Francisco.
- USA Today
2019 McKinney and Elk Grove are among cities that have grown the most in the past 20 years. (November 14, 2019) [Gallery post]. Retrieved from <https://www.usatoday.com/picture-gallery/life/2019/11/14/these-25-cities-have-grown-the-most-since-2000/40572893/>
- Shumway, Burgess McK.
2007 California Ranchos. Second Edition, the Borgo Press, Berkeley, California.

ATTACHMENT A

Figures

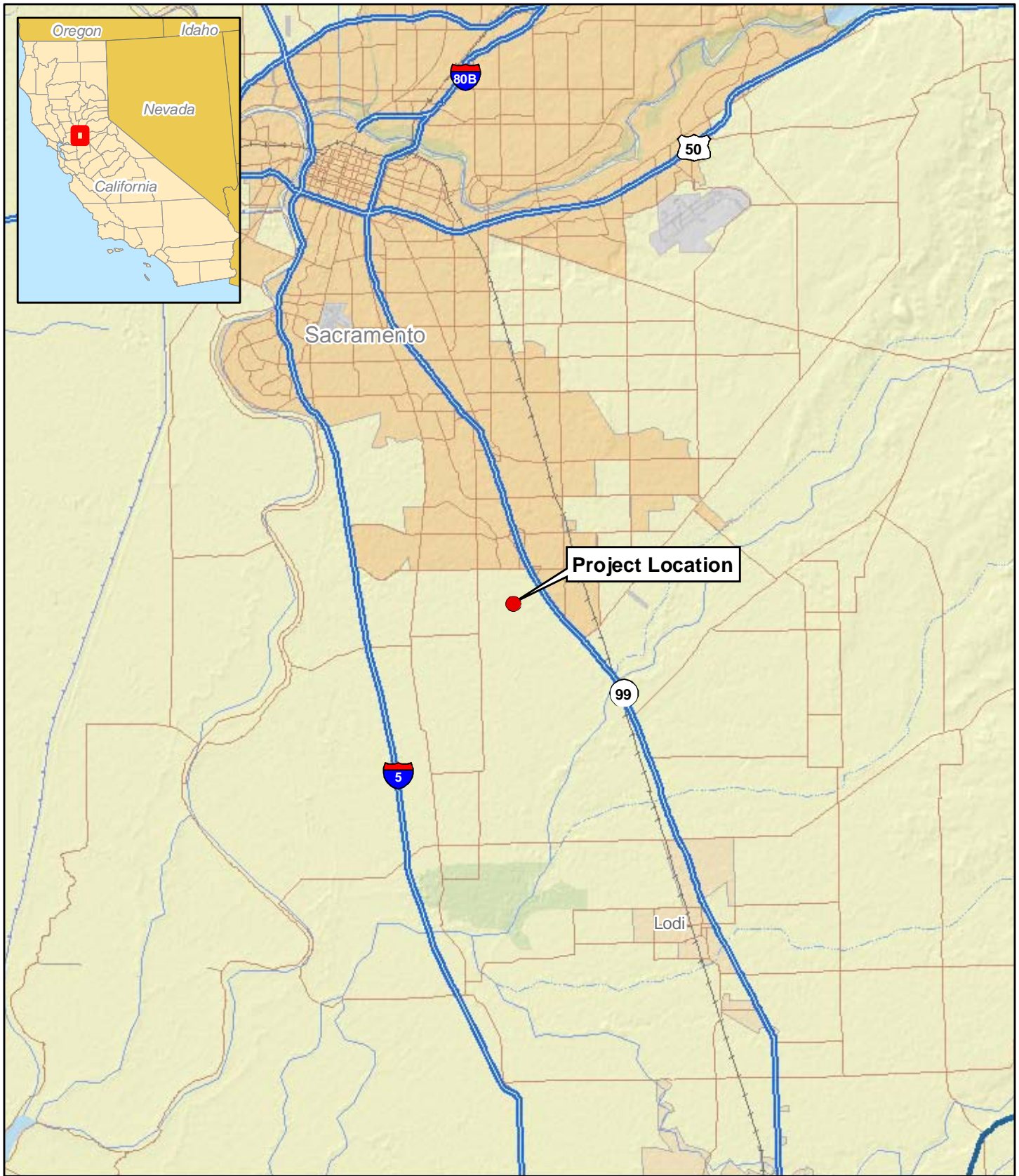


Figure 1. Project Vicinity Map.

● Elk Grove Center Project Area



1:250,000

0 3 Miles

0 6 Kilometers



Sources: USA Base Map [layer], Data and Maps [CD]. ESRI, 2006.

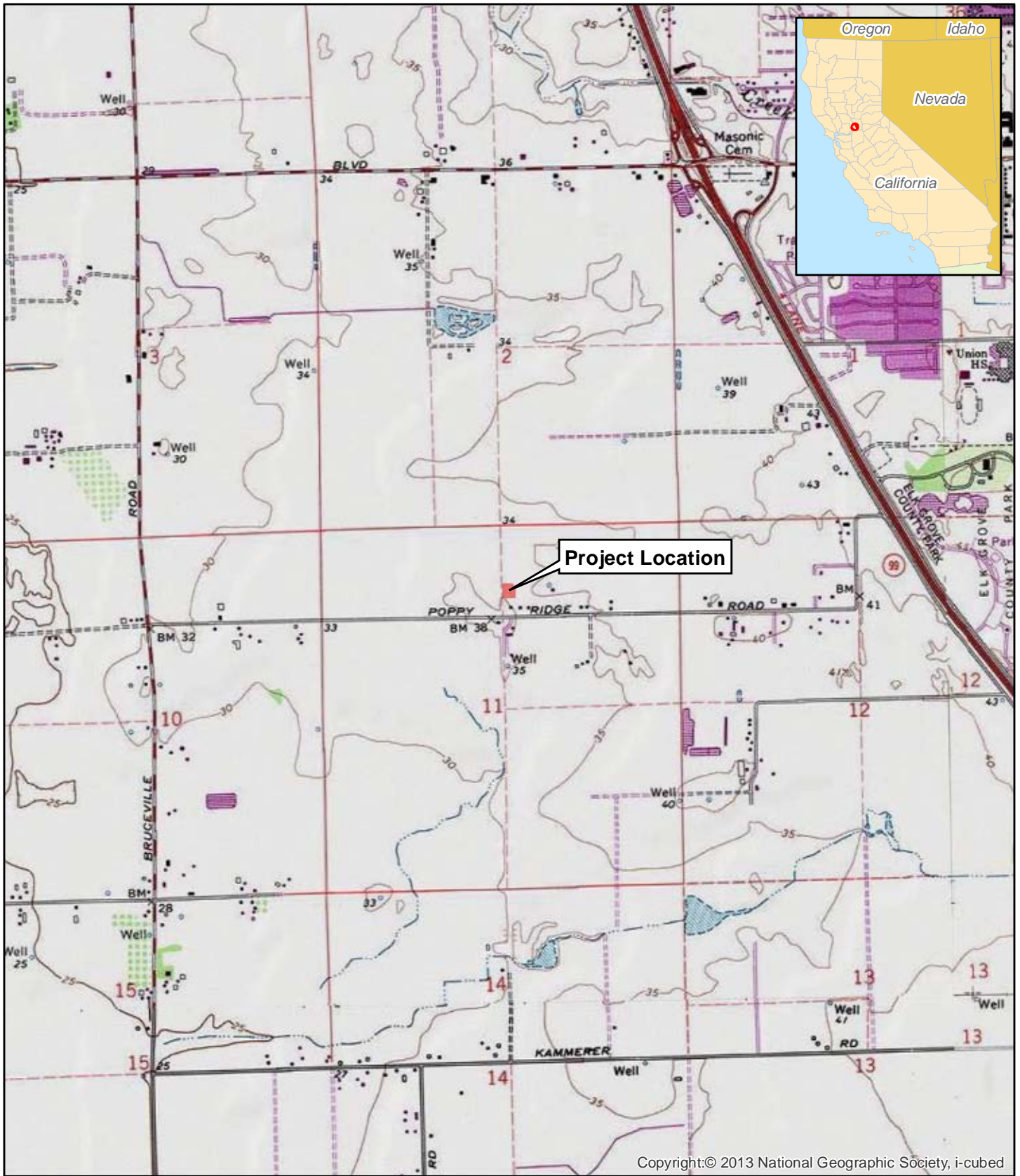


Figure 2. Project Location Map.

1:24,000

■ Elk Grove Center Project Area

0.5

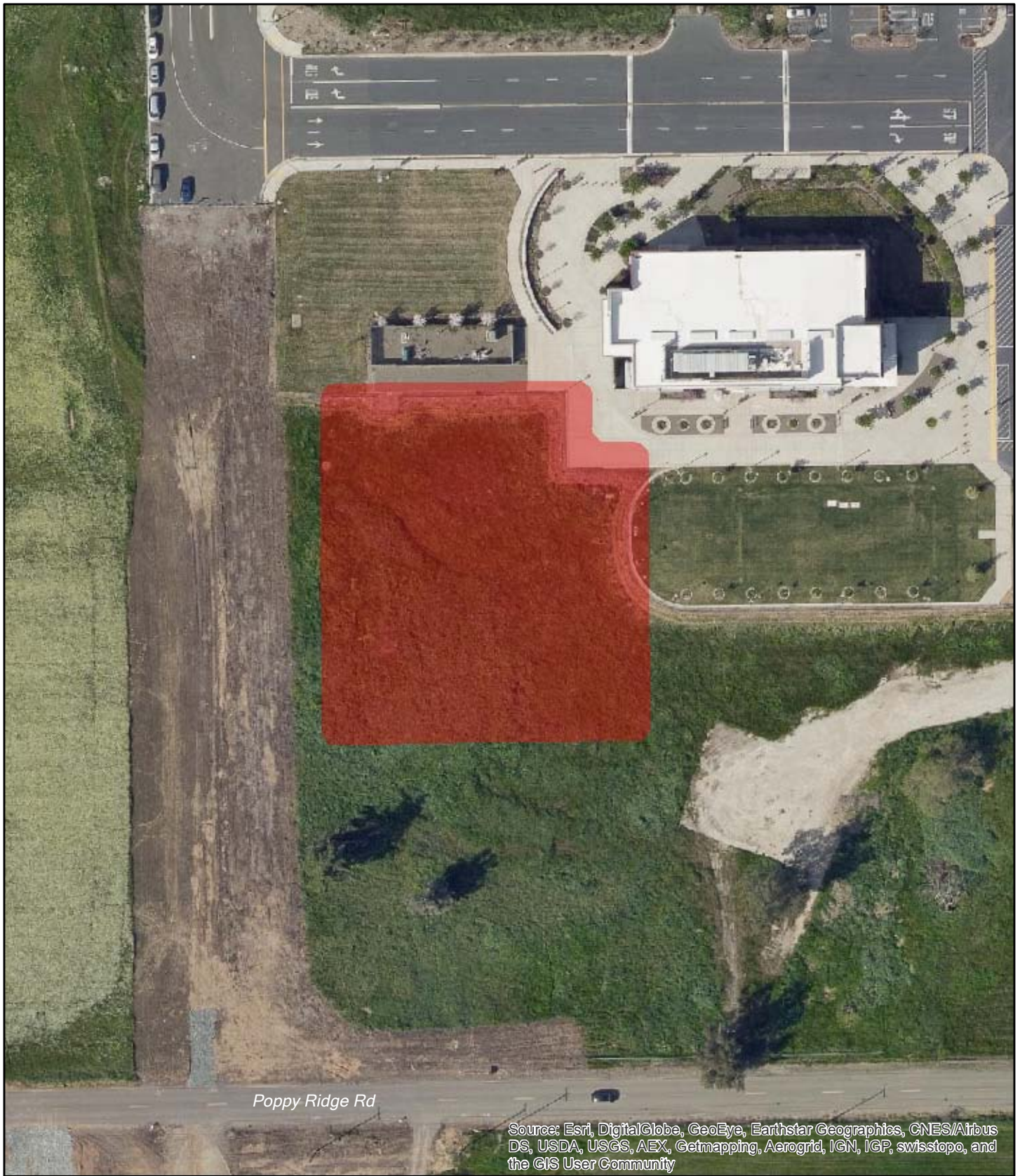
_____ Miles

1

_____ Kilometers

T6N, R5E, Section 11.
Florin 7.5' Series Quadrangle, USGS, 1980.





Poppy Ridge Rd

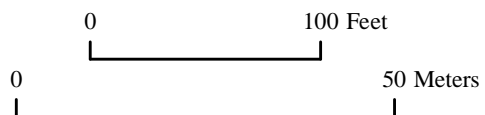
Source: Esri, DigitalGlobe, GeoEye, Earthstar Geographics, CNES/Airbus DS, USDA, USGS, AEX, Getmapping, Aerogrid, IGN, IGP, swisstopo, and the GIS User Community

Figure 3. Project Area Map.

 Elk Grove Center Project Area

Total Acreage = 1.01

1:1,000



ATTACHMENT B

Native American Outreach Documentation



December 26, 2019

Native American Heritage Commission
1550 Harbor Blvd, Suite 100
West Sacramento, CA 95691

To Whom It May Concern:

Petralogix Engineering, Inc. has recently retained Solano Archaeological Services (SAS) to conduct a California Environmental Quality Act (CEQA) level cultural resources inventory of an approximate 2-acre parcel located in Elk Grove, **Sacramento County**, for the proposed **Elk Grove Center Project**. The Elk Grove Center is a State approved educational center for Cosumnes River College. As part of a State of California Capital Outlay, Cosumnes River College proposes to construct an additional instructional building comprising approximately 15,200 square feet adjacent to the existing instructional building that lies immediately to the northeast.

The current Elk Grove Center facility has the address of 10051 Big Horn Blvd, Elk Grove, California, 95757, approximately one mile west of Highway 99. The project area is situated on the *Florin, California* topographic 7.5 minute quadrangle, Township 6 North, Range 5 East, Section 11. Attached is a map depicting the project area.

Please know SAS is acting as proxy for Petralogix Engineering, Inc. and Cosumnes River College to facilitate AB52 consultation for this project. We would like to request a Sacred Land File (SLF) review for any known cultural resources in the project area. If you could please send us a list of Native American individuals/organizations that may have knowledge of cultural resources in the involved property, we would greatly appreciate it. We would like to request information from these individuals/entities about possible unrecorded cultural resources that may exist in the vicinity, and gather any recommendations they may have in regard to the project.

Please email SLF search results back to jason@solanoarchaeology.com.

If you have any questions, feel free to contact me at the numbers listed above. Thank you very much for your time.

Thanks,

Jason Coleman
Principal Investigator and Owner

Enc. USGS topographic map

NATIVE AMERICAN HERITAGE COMMISSION
Cultural and Environmental Department
1550 Harbor Blvd., Suite 100
West Sacramento, CA 95691
Phone: (916) 373-3710
Email: nahc@nahc.ca.gov
Website: <http://www.nahc.ca.gov>
Twitter: @CA_NAHC



December 27, 2019

Jason Coleman
Solano Archeological Services

VIA Email to: jason@solanoarchaeology.com

RE: Elk Grove Center Project, Sacramento County

Dear Mr. Coleman:

A record search of the Native American Heritage Commission (NAHC) Sacred Lands File (SLF) was completed for the information you have submitted for the above referenced project. The results were negative. However, the absence of specific site information in the SLF does not indicate the absence of cultural resources in any project area. Other sources of cultural resources should also be contacted for information regarding known and recorded sites.

Attached is a list of Native American tribes who may also have knowledge of cultural resources in the project area. This list should provide a starting place in locating areas of potential adverse impact within the proposed project area. I suggest you contact all of those indicated; if they cannot supply information, they might recommend others with specific knowledge. By contacting all those listed, your organization will be better able to respond to claims of failure to consult with the appropriate tribe. If a response has not been received within two weeks of notification, the Commission requests that you follow-up with a telephone call or email to ensure that the project information has been received.

If you receive notification of change of addresses and phone numbers from tribes, please notify the NAHC. With your assistance, we can assure that our lists contain current information. If you have any questions or need additional information, please contact me at my email address: Nancy.Gonzalez-Lopez@nahc.ca.gov.

Sincerely,

A handwritten signature in cursive script that reads "Nancy Gonzalez-Lopez".

Nancy Gonzalez-Lopez
Staff Services Analyst

Attachment

**Native American Heritage Commission
Native American Contacts List
December 27, 2019**

Buena Vista Rancheria of Me-Wuk Indians
Rhonda Morningstar Pope, Chairperson
1418 20th Street, Suite 200 Me-Wuk / Miwok
Sacramento, CA 95811
rhonda@buenavistatribe.com
(916) 491-0011 Office
(916) 491-0012 Fax

Shingle Springs Band of Miwok Indians
Regina Cuellar, Chairperson
P.O. Box 1340 Miwok
Shingle Springs, CA 95682 Maidu
rcuellar@ssband.org
(530) 387-4970
(530) 387-8067 Fax

Colfax-Todds Valley Consolidated Tribe
Pamela Cubbler, Treasurer
P.O. Box 4884 Miwok
Auburn, CA 95604 Maidu
PCubbler@colfaxrancheria.com
(530) 320-3943

Tsi Akim Maidu
Grayson Coney, Cultural Director
P.O. Box 510 Maidu
Browns Valley, CA 95918
tsi-akim-maidu@att.net
(530) 274-7497

Colfax-Todds Valley Consolidated Tribe
Clyde Prout, Chairman
P.O. Box 4884 Miwok
Auburn, CA 95604 Maidu
miwokmaidu@yahoo.com
(916) 577-3558

Tsi Akim Maidu
Don Ryberg, Chairperson
P.O. Box 510 Maidu
Browns Valley, CA 95918
tsi-akim-maidu@att.net
(530) 383-7234

Ione Band of Miwok Indians
Sara Dutschke Setchwaelo, Chairperson
9252 Bush Street, Suite 2 Miwok
Plymouth, CA 95669
sara@ionemiwok.net
(209) 245-5800
(209) 256-9799

United Auburn Indian Community of the Auburn Rancheria
Gene Whitehouse, Chairperson
10720 Indian Hill Road Maidu
Auburn, CA 95603 Miwok
bguth@auburnrancheria.com
(530) 883-2390 Office
(530) 883-2380 Fax

Nashville Enterprise Miwok-Maidu-Nishinam Tribe
Cosme A. Valdez, Chairperson
P.O. Box 580986 Miwok
Elk Grove, CA 95758-001
valdezcome@comcast.net
(916) 429-8047 Voice/Fax
(916) 396-1173 Cell

Wilton Rancheria
Raymond Hitchcock, Chairperson
9728 Kent Street Miwok
Elk Grove, CA 95624
rhitchcock@wiltonrancheria-nsn.gov
(916) 683-6000 Office
(916) 683-6015 Fax

This list is current as of the date of this document and is based on the information available to the Commission on the date it was produced.

Distribution of this list does not relieve any person of statutory responsibility as defined in Section 7050.5 of the Health and Safety Code, Section 5097.94 of the Public Resources Code, or Section 5097.98 of the Public Resources Code.

This list is only applicable for contacting local Native Americans Tribes for the proposed:
Elk Grove Center Project, Sacramento County.



January 3, 2020

Tsi Akim Maidu
Attn. Grayson Coney, Cultural Director
P.O. Box 510
Browns Valley, CA 95918

RE: Cultural Resources Inventory for the Elk Grove Center Project, Sacramento County, California

Dear Mr. Coney:

Petralogix Engineering, Inc. has recently retained Solano Archaeological Services (SAS) to conduct a California Environmental Quality Act (CEQA) level cultural resources inventory of an approximate 2-acre parcel located in Elk Grove, **Sacramento County**, for the proposed **Elk Grove Center Project**. The Elk Grove Center is a State approved educational center for Cosumnes River College. As part of a State of California Capital Outlay, Cosumnes River College proposes to construct an additional instructional building comprising approximately 15,200 square feet adjacent to the existing instructional building that lies immediately to the northeast.

The current Elk Grove Center facility has the address of 10051 Big Horn Blvd, Elk Grove, California, 95757, approximately one mile west of Highway 99. The project area is situated on the *Florin, California* topographic 7.5 minute quadrangle, Township 6 North, Range 5 East, Section 11. Attached is a map depicting the project area.

The review of the Native American Heritage Commission Sacred Land File (SLF) had negative results, and the records search at the North Central Information Center at Sacramento State University yielded a single historic-era resource (residential complex) in the project area. On behalf of Petralogix Engineering, Inc. and the Cosumnes River College, SAS is facilitating AB 52 consultation for this Project. We are writing to introduce the Project to you, and gather any information on undocumented sites that may exist in the project area. Any help would be greatly appreciated. Additionally, if you have any official recommendations you would like to make in regard to the Project and its undertaking, or have any questions about the Project, please feel free to contact us.

Thank you very much for your time.

Sincerely,

Jason Coleman
Senior Archaeologist and Principal
jason@solanoarchaeology.com



January 3, 2020

Colfax-Todds Valley Consolidated Tribe
Attn. Pamela Cubbler, Treasurer
P.O. Box 4884
Auburn, CA 95604

RE: Cultural Resources Inventory for the Elk Grove Center Project, Sacramento County, California

Dear Ms. Cubbler:

Petralogix Engineering, Inc. has recently retained Solano Archaeological Services (SAS) to conduct a California Environmental Quality Act (CEQA) level cultural resources inventory of an approximate 2-acre parcel located in Elk Grove, **Sacramento County**, for the proposed **Elk Grove Center Project**. The Elk Grove Center is a State approved educational center for Cosumnes River College. As part of a State of California Capital Outlay, Cosumnes River College proposes to construct an additional instructional building comprising approximately 15,200 square feet adjacent to the existing instructional building that lies immediately to the northeast.

The current Elk Grove Center facility has the address of 10051 Big Horn Blvd, Elk Grove, California, 95757, approximately one mile west of Highway 99. The project area is situated on the *Florin, California* topographic 7.5 minute quadrangle, Township 6 North, Range 5 East, Section 11. Attached is a map depicting the project area.

The review of the Native American Heritage Commission Sacred Land File (SLF) had negative results, and the records search at the North Central Information Center at Sacramento State University yielded a single historic-era resource (residential complex) in the project area. On behalf of Petralogix Engineering, Inc. and the Cosumnes River College, SAS is facilitating AB 52 consultation for this Project. We are writing to introduce the Project to you, and gather any information on undocumented sites that may exist in the project area. Any help would be greatly appreciated. Additionally, if you have any official recommendations you would like to make in regard to the Project and its undertaking, or have any questions about the Project, please feel free to contact us.

Thank you very much for your time.

Sincerely,

Jason Coleman
Senior Archaeologist and Principal
jason@solanoarchaeology.com



January 3, 2020

Shingle Springs Band of Miwok Indians
Attn. Regina Cuellar, Chairperson
P.O. Box 1340
Shingle Springs, CA 95682

RE: Cultural Resources Inventory for the Elk Grove Center Project, Sacramento County, California

Dear Ms. Cuellar:

Petralogix Engineering, Inc. has recently retained Solano Archaeological Services (SAS) to conduct a California Environmental Quality Act (CEQA) level cultural resources inventory of an approximate 2-acre parcel located in Elk Grove, **Sacramento County**, for the proposed **Elk Grove Center Project**. The Elk Grove Center is a State approved educational center for Cosumnes River College. As part of a State of California Capital Outlay, Cosumnes River College proposes to construct an additional instructional building comprising approximately 15,200 square feet adjacent to the existing instructional building that lies immediately to the northeast.

The current Elk Grove Center facility has the address of 10051 Big Horn Blvd, Elk Grove, California, 95757, approximately one mile west of Highway 99. The project area is situated on the *Florin, California* topographic 7.5 minute quadrangle, Township 6 North, Range 5 East, Section 11. Attached is a map depicting the project area.

The review of the Native American Heritage Commission Sacred Land File (SLF) had negative results, and the records search at the North Central Information Center at Sacramento State University yielded a single historic-era resource (residential complex) in the project area. On behalf of Petralogix Engineering, Inc. and the Cosumnes River College, SAS is facilitating AB 52 consultation for this Project. We are writing to introduce the Project to you, and gather any information on undocumented sites that may exist in the project area. Any help would be greatly appreciated. Additionally, if you have any official recommendations you would like to make in regard to the Project and its undertaking, or have any questions about the Project, please feel free to contact us.

Thank you very much for your time.

Sincerely,

Jason Coleman
Senior Archaeologist and Principal
jason@solanoarchaeology.com



January 3, 2020

Wilton Rancheria
Attn. Raymond Hitchcock
9728 Kent Street
Elk Grove, CA 95624

RE: Cultural Resources Inventory for the Elk Grove Center Project, Sacramento County, California

Dear Mr. Hitchcock:

Petralogix Engineering, Inc. has recently retained Solano Archaeological Services (SAS) to conduct a California Environmental Quality Act (CEQA) level cultural resources inventory of an approximate 2-acre parcel located in Elk Grove, **Sacramento County**, for the proposed **Elk Grove Center Project**. The Elk Grove Center is a State approved educational center for Cosumnes River College. As part of a State of California Capital Outlay, Cosumnes River College proposes to construct an additional instructional building comprising approximately 15,200 square feet adjacent to the existing instructional building that lies immediately to the northeast.

The current Elk Grove Center facility has the address of 10051 Big Horn Blvd, Elk Grove, California, 95757, approximately one mile west of Highway 99. The project area is situated on the *Florin, California* topographic 7.5 minute quadrangle, Township 6 North, Range 5 East, Section 11. Attached is a map depicting the project area.

The review of the Native American Heritage Commission Sacred Land File (SLF) had negative results, and the records search at the North Central Information Center at Sacramento State University yielded a single historic-era resource (residential complex) in the project area. On behalf of Petralogix Engineering, Inc. and the Cosumnes River College, SAS is facilitating AB 52 consultation for this Project. We are writing to introduce the Project to you, and gather any information on undocumented sites that may exist in the project area. Any help would be greatly appreciated. Additionally, if you have any official recommendations you would like to make in regard to the Project and its undertaking, or have any questions about the Project, please feel free to contact us.

Thank you very much for your time.

Sincerely,

Jason Coleman
Senior Archaeologist and Principal
jason@solanoarchaeology.com



January 3, 2020

Buena Vista Rancheria of Me-Wuk Indians
Attn. Rhonda Morningstar Pope, Chairperson
1418 20th Street, Ste. 200
Sacramento, CA 95811

RE: Cultural Resources Inventory for the Elk Grove Center Project, Sacramento County, California

Dear Ms. Morningstar Pope:

Petralogix Engineering, Inc. has recently retained Solano Archaeological Services (SAS) to conduct a California Environmental Quality Act (CEQA) level cultural resources inventory of an approximate 2-acre parcel located in Elk Grove, **Sacramento County**, for the proposed **Elk Grove Center Project**. The Elk Grove Center is a State approved educational center for Cosumnes River College. As part of a State of California Capital Outlay, Cosumnes River College proposes to construct an additional instructional building comprising approximately 15,200 square feet adjacent to the existing instructional building that lies immediately to the northeast.

The current Elk Grove Center facility has the address of 10051 Big Horn Blvd, Elk Grove, California, 95757, approximately one mile west of Highway 99. The project area is situated on the *Florin, California* topographic 7.5 minute quadrangle, Township 6 North, Range 5 East, Section 11. Attached is a map depicting the project area.

The review of the Native American Heritage Commission Sacred Land File (SLF) had negative results, and the records search at the North Central Information Center at Sacramento State University yielded a single historic-era resource (residential complex) in the project area. On behalf of Petralogix Engineering, Inc. and the Cosumnes River College, SAS is facilitating AB 52 consultation for this Project. We are writing to introduce the Project to you, and gather any information on undocumented sites that may exist in the project area. Any help would be greatly appreciated. Additionally, if you have any official recommendations you would like to make in regard to the Project and its undertaking, or have any questions about the Project, please feel free to contact us.

Thank you very much for your time.

Sincerely,

Jason Coleman
Senior Archaeologist and Principal
jason@solanoarchaeology.com



January 3, 2020

Colfax-Todds Valley Consolidated Tribe
Attn. Clyde Prout, Chairperson
P.O. Box 4884
Auburn, CA 95604

RE: Cultural Resources Inventory for the Elk Grove Center Project, Sacramento County, California

Dear Mr. Prout:

Petralogix Engineering, Inc. has recently retained Solano Archaeological Services (SAS) to conduct a California Environmental Quality Act (CEQA) level cultural resources inventory of an approximate 2-acre parcel located in Elk Grove, **Sacramento County**, for the proposed **Elk Grove Center Project**. The Elk Grove Center is a State approved educational center for Cosumnes River College. As part of a State of California Capital Outlay, Cosumnes River College proposes to construct an additional instructional building comprising approximately 15,200 square feet adjacent to the existing instructional building that lies immediately to the northeast.

The current Elk Grove Center facility has the address of 10051 Big Horn Blvd, Elk Grove, California, 95757, approximately one mile west of Highway 99. The project area is situated on the *Florin, California* topographic 7.5 minute quadrangle, Township 6 North, Range 5 East, Section 11. Attached is a map depicting the project area.

The review of the Native American Heritage Commission Sacred Land File (SLF) had negative results, and the records search at the North Central Information Center at Sacramento State University yielded a single historic-era resource (residential complex) in the project area. On behalf of Petralogix Engineering, Inc. and the Cosumnes River College, SAS is facilitating AB 52 consultation for this Project. We are writing to introduce the Project to you, and gather any information on undocumented sites that may exist in the project area. Any help would be greatly appreciated. Additionally, if you have any official recommendations you would like to make in regard to the Project and its undertaking, or have any questions about the Project, please feel free to contact us.

Thank you very much for your time.

Sincerely,

A handwritten signature in blue ink, appearing to read "Jason Coleman", is written over the word "Sincerely,".

Jason Coleman
Senior Archaeologist and Principal
jason@solanoarchaeology.com



January 3, 2020

Tsi Akim Maidu
Attn. Don Ryberg, Chairperson
P.O. Box 510
Browns Valley, CA 95918

RE: Cultural Resources Inventory for the Elk Grove Center Project, Sacramento County, California

Dear Mr. Ryberg:

Petralogix Engineering, Inc. has recently retained Solano Archaeological Services (SAS) to conduct a California Environmental Quality Act (CEQA) level cultural resources inventory of an approximate 2-acre parcel located in Elk Grove, **Sacramento County**, for the proposed **Elk Grove Center Project**. The Elk Grove Center is a State approved educational center for Cosumnes River College. As part of a State of California Capital Outlay, Cosumnes River College proposes to construct an additional instructional building comprising approximately 15,200 square feet adjacent to the existing instructional building that lies immediately to the northeast.

The current Elk Grove Center facility has the address of 10051 Big Horn Blvd, Elk Grove, California, 95757, approximately one mile west of Highway 99. The project area is situated on the *Florin, California* topographic 7.5 minute quadrangle, Township 6 North, Range 5 East, Section 11. Attached is a map depicting the project area.

The review of the Native American Heritage Commission Sacred Land File (SLF) had negative results, and the records search at the North Central Information Center at Sacramento State University yielded a single historic-era resource (residential complex) in the project area. On behalf of Petralogix Engineering, Inc. and the Cosumnes River College, SAS is facilitating AB 52 consultation for this Project. We are writing to introduce the Project to you, and gather any information on undocumented sites that may exist in the project area. Any help would be greatly appreciated. Additionally, if you have any official recommendations you would like to make in regard to the Project and its undertaking, or have any questions about the Project, please feel free to contact us.

Thank you very much for your time.

Sincerely,

A handwritten signature in blue ink, appearing to read "Jason Coleman", is written over the word "Sincerely,".

Jason Coleman
Senior Archaeologist and Principal
jason@solanoarchaeology.com



January 3, 2020

Ione Band of Miwok Indians
Attn. Sara Dutschke Setchwaelo, Chairperson
9252 Bush Street, Ste. 2
Plymouth, CA 95669

RE: Cultural Resources Inventory for the Elk Grove Center Project, Sacramento County, California

Dear Ms. Dutschke Setchwaelo:

Petralogix Engineering, Inc. has recently retained Solano Archaeological Services (SAS) to conduct a California Environmental Quality Act (CEQA) level cultural resources inventory of an approximate 2-acre parcel located in Elk Grove, **Sacramento County**, for the proposed **Elk Grove Center Project**. The Elk Grove Center is a State approved educational center for Cosumnes River College. As part of a State of California Capital Outlay, Cosumnes River College proposes to construct an additional instructional building comprising approximately 15,200 square feet adjacent to the existing instructional building that lies immediately to the northeast.

The current Elk Grove Center facility has the address of 10051 Big Horn Blvd, Elk Grove, California, 95757, approximately one mile west of Highway 99. The project area is situated on the *Florin, California* topographic 7.5 minute quadrangle, Township 6 North, Range 5 East, Section 11. Attached is a map depicting the project area.

The review of the Native American Heritage Commission Sacred Land File (SLF) had negative results, and the records search at the North Central Information Center at Sacramento State University yielded a single historic-era resource (residential complex) in the project area. On behalf of Petralogix Engineering, Inc. and the Cosumnes River College, SAS is facilitating AB 52 consultation for this Project. We are writing to introduce the Project to you, and gather any information on undocumented sites that may exist in the project area. Any help would be greatly appreciated. Additionally, if you have any official recommendations you would like to make in regard to the Project and its undertaking, or have any questions about the Project, please feel free to contact us.

Thank you very much for your time.

Sincerely,

Jason Coleman
Senior Archaeologist and Principal
jason@solanoarchaeology.com



January 3, 2020

Nashville Enterprise Miwok-Maidi-Nishinam Tribe
Attn. Cosme A. Valdez, Chairperson
P.O. Box 580986
Elk Grove, CA 95758

RE: Cultural Resources Inventory for the Elk Grove Center Project, Sacramento County, California

Dear Mr. Valdez:

Petralogix Engineering, Inc. has recently retained Solano Archaeological Services (SAS) to conduct a California Environmental Quality Act (CEQA) level cultural resources inventory of an approximate 2-acre parcel located in Elk Grove, **Sacramento County**, for the proposed **Elk Grove Center Project**. The Elk Grove Center is a State approved educational center for Cosumnes River College. As part of a State of California Capital Outlay, Cosumnes River College proposes to construct an additional instructional building comprising approximately 15,200 square feet adjacent to the existing instructional building that lies immediately to the northeast.

The current Elk Grove Center facility has the address of 10051 Big Horn Blvd, Elk Grove, California, 95757, approximately one mile west of Highway 99. The project area is situated on the *Florin, California* topographic 7.5 minute quadrangle, Township 6 North, Range 5 East, Section 11. Attached is a map depicting the project area.

The review of the Native American Heritage Commission Sacred Land File (SLF) had negative results, and the records search at the North Central Information Center at Sacramento State University yielded a single historic-era resource (residential complex) in the project area. On behalf of Petralogix Engineering, Inc. and the Cosumnes River College, SAS is facilitating AB 52 consultation for this Project. We are writing to introduce the Project to you, and gather any information on undocumented sites that may exist in the project area. Any help would be greatly appreciated. Additionally, if you have any official recommendations you would like to make in regard to the Project and its undertaking, or have any questions about the Project, please feel free to contact us.

Thank you very much for your time.

Sincerely,

Jason Coleman
Senior Archaeologist and Principal
jason@solanoarchaeology.com



January 3, 2020

United Auburn Indian Community of the Auburn Rancheria
Attn. Gene Whitehouse, Chairperson
10720 Indian Hill Road
Auburn, CA 95603

RE: Cultural Resources Inventory for the Elk Grove Center Project, Sacramento County, California

Dear Mr. Whitehouse:

Petralogix Engineering, Inc. has recently retained Solano Archaeological Services (SAS) to conduct a California Environmental Quality Act (CEQA) level cultural resources inventory of an approximate 2-acre parcel located in Elk Grove, **Sacramento County**, for the proposed **Elk Grove Center Project**. The Elk Grove Center is a State approved educational center for Cosumnes River College. As part of a State of California Capital Outlay, Cosumnes River College proposes to construct an additional instructional building comprising approximately 15,200 square feet adjacent to the existing instructional building that lies immediately to the northeast.

The current Elk Grove Center facility has the address of 10051 Big Horn Blvd, Elk Grove, California, 95757, approximately one mile west of Highway 99. The project area is situated on the *Florin, California* topographic 7.5 minute quadrangle, Township 6 North, Range 5 East, Section 11. Attached is a map depicting the project area.

The review of the Native American Heritage Commission Sacred Land File (SLF) had negative results, and the records search at the North Central Information Center at Sacramento State University yielded a single historic-era resource (residential complex) in the project area. On behalf of Petralogix Engineering, Inc. and the Cosumnes River College, SAS is facilitating AB 52 consultation for this Project. We are writing to introduce the Project to you, and gather any information on undocumented sites that may exist in the project area. Any help would be greatly appreciated. Additionally, if you have any official recommendations you would like to make in regard to the Project and its undertaking, or have any questions about the Project, please feel free to contact us.

Thank you very much for your time.

Sincerely,

A handwritten signature in blue ink, appearing to read "Jason Coleman", is written over the word "Sincerely,".

Jason Coleman
Senior Archaeologist and Principal
jason@solanoarchaeology.com

California Capital Outlay for 3 Community College Campus Projects

Jason Coleman <jason@solanoarchaeology.com>

Tue 1/7/2020 10:57 AM

To: Rhonda Pope <rhonda@buenavistatribe.com>; PCubbler@colfaxrancheria.com <PCubbler@colfaxrancheria.com>; miwokmaidu@yahoo.com <miwokmaidu@yahoo.com>; Sara <sara@ionemiwok.net>; valdezcome@comcast.net <valdezcome@comcast.net>; rcuellar@ssband.org <rcuellar@ssband.org>; tsi-akim-maidu@att.net <tsi-akim-maidu@att.net>; bguth@auburnrancheria.com <bguth@auburnrancheria.com>; Raymond Hitchcock <rhitchcock@wiltonrancheria-nsn.gov>
Cc: Susan Talcott <susan@solanoarchaeology.com>

 2 attachments (4 MB)

Fig3_ProjectArea_AmerRiv.pdf; Fig3_ProjectArea_FolsomLake.pdf;

Hi folks,

I am writing to follow up letters we mailed to you on January 3, 2020. Petralogix Engineering, Inc. has recently retained Solano Archaeological Services (SAS) to conduct CEQA level cultural inventories for three projects in Sacramento County involving California Capital Outlay funding. The three projects are:

1. American River College, Technology Building Modernization Project (ARC Tech Building Project)
2. Elk Grove Center Project
3. Folsom Lake College Project

Project area maps for all three are attached, and we have pasted all three letters below my signature line. Please know that the Native American Heritage Commission, the North Central Information Center, and the pedestrian survey for all three projects were negative for pre-contact cultural resources. As SAS is facilitating AB 52 consultation for these projects, we requesting information on unrecorded resources that may lie in the vicinity of the project areas, and any project based recommendations you may have. We will be recording all recommendations in the CEQA report for each project, and we will forward all questions and concerns to the lead agency involved for each project. For the ARC Tech Building Project and the Folsom Lake College Project, the lead agency is the Los Rios Community College District. The Cosumnes River College is the lead agency for the Elk Grove Center Project.

Any information you have on any of the three projects would be greatly appreciated. Thanks for your time, and please feel free to contact us any time.

Regard,

Jason Coleman

Jason A. Coleman, M.A., R.P.A.
Owner and Principal
131 Sunset Avenue, Ste. E 120
Suisun City, CA 94585
Phone 707-718-1416 Fax 707-451-4775
www.solanoarchaeology.com



RE: Cultural Resources Inventory for the **American River College, Technology Building Modernization Project**, Sacramento County, California

Petralogix Engineering, Inc. has recently retained Solano Archaeological Services (SAS) to conduct a California Environmental Quality Act (CEQA) level cultural resources inventory of an approximate 6-acre parcel located in the City of Sacramento, **Sacramento County**, for the proposed **American River College, Technology Building Modernization Project**. American River College is one of four colleges in the Los Rios Community College District (LRCCD). Funded by the State of California Capital Outlay program, the LRCCD proposes to modernize the Technology Building at the American River College, which is now used primarily by the Automotive, Welding Technology, and Electronic programs. The undertaking includes moving the Physics and Engineering programs that are also currently in the building and replacing them with other interdisciplinary programs. The proposed modernization will improve and reconfigure the technology of these spaces for improved circulation and access compliance. The modernization also provides improvements to power, lighting, data, and HVAC systems, as well as the replacement of three old temporary portable buildings with a new permanent space.

The American River College has the address of 4700 College Oak Drive, Sacramento, California 95841, approximately 1.2 miles east of Highway 80. The project area is situated on the *Citrus Heights, California* topographic 7.5-minute quadrangle, in the *Del Paso* land grant, projected Township 9 North, Range 6 East, Sections 46 and 53. Attached is a map depicting the project area.

The review of the Native American Heritage Commission Sacred Land File (SLF) had negative results, and the records search at the North Central Information Center at Sacramento State University is pending. On behalf of Petralogix Engineering, Inc. and the LRCCD, SAS is facilitating AB 52 consultation for this Project. We are writing to introduce the Project to you, and gather any information on undocumented sites that may exist in the project area. Any help would be greatly appreciated. Additionally, if you have any official recommendations you would like to make in regard to the Project and its undertaking, or have any questions about the Project, please feel free to contact us.

 RE: Cultural Resources Inventory for the **Elk Grove Center Project**, Sacramento County, California

Petralogix Engineering, Inc. has recently retained Solano Archaeological Services (SAS) to conduct a California Environmental Quality Act (CEQA) level cultural resources inventory of an approximate 2-acre parcel located in Elk Grove, **Sacramento County**, for the proposed **Elk Grove Center Project**. The Elk Grove Center is a State approved educational center for Cosumnes River College. As part of a State of California Capital Outlay, Cosumnes River College proposes to construct an additional instructional building comprising approximately 15,200 square feet adjacent to the existing instructional building that lies immediately to the northeast.

The current Elk Grove Center facility has the address of 10051 Big Horn Blvd, Elk Grove, California, 95757, approximately one mile west of Highway 99. The project area is situated on the *Florin, California* topographic 7.5 minute quadrangle, Township 6 North, Range 5 East, Section 11. Attached is a map depicting the project area.

The review of the Native American Heritage Commission Sacred Land File (SLF) had negative results, and the records search at the North Central Information Center at Sacramento State University yielded a single historic-era resource (residential complex) in the project area. On behalf of Petralogix Engineering, Inc. and the Cosumnes River College, SAS is facilitating AB 52 consultation for this Project. We are writing to introduce the Project to you, and gather any information on undocumented sites that may exist in the project area. Any help would be

greatly appreciated. Additionally, if you have any official recommendations you would like to make in regard to the Project and its undertaking, or have any questions about the Project, please feel free to contact us.

RE: Cultural Resources Inventory for the **Folsom Lake College Project**, Sacramento County, California

Petralogix Engineering, Inc. has recently retained Solano Archaeological Services (SAS) to conduct a California Environmental Quality Act (CEQA) level cultural resources inventory of an approximate 5-acre parcel located in Folsom, **Sacramento County**, for the proposed **Folsom Lake College Project**. Folsom Lake College is the newest of the four colleges in the Los Rios Community College District. As part of a State of California Capital Outlay, the Los Rios Community College District proposes to construct a new instructional building comprising approximately 48,900 square feet to be used for instructional, office, and support spaces for the chemistry, biology, physical sciences, and career and technical departments.

The current Folsom Lake College has the address of 10 College Parkway, Folsom, California, 95630, approximately 1.2 miles north of Highway 50. The project area is situated on the *Clarksville, California* topographic 7.5 minute quadrangle, Township 9 North, Range 8 East, Section 5. Attached is a map depicting the project area.

The review of the Native American Heritage Commission Sacred Land File (SLF) had negative results, and the records search at the North Central Information Center at Sacramento State University yielded a single historic-era resource (Folsom Mining District Dredger Tailings) in the project area. On behalf of Petralogix Engineering, Inc. and the Cosumnes River College, SAS is facilitating AB 52 consultation for this Project. We are writing to introduce the Project to you, and gather any information on undocumented sites that may exist in the project area.

Any help would be greatly appreciated. Additionally, if you have any official recommendations you would like to make in regard to the Project and its undertaking, or have any questions about the Project, please feel free to contact us.

Sacramento County Community College Improvement Projects

Jason Coleman <jason@solanoarchaeology.com>

Fri 1/10/2020 8:27 AM

To: Rhonda Pope <rhonda@buenavistatribe.com>; PCubbler@colfaxrancheria.com <PCubbler@colfaxrancheria.com>; miwokmaidu@yahoo.com <miwokmaidu@yahoo.com>; Sara <sara@ionemiwok.net>; valdezcome@comcast.net <valdezcome@comcast.net>; rcuellar@ssband.org <rcuellar@ssband.org>; tsi-akim-maidu@att.net <tsi-akim-maidu@att.net>; bguth@auburnrancheria.com <bguth@auburnrancheria.com>; Raymond Hitchcock <rhitchcock@wiltonrancheria-nsn.gov>

Hi folks,

I am writing to follow up again letters we mailed to you on January 3, 2020. Petralogix Engineering, Inc. has recently retained Solano Archaeological Services (SAS) to conduct CEQA level cultural inventories for three projects in Sacramento County involving California Capital Outlay funding. The three projects are:

1. American River College, Technology Building Modernization Project (ARC Tech Building Project)
2. Elk Grove Center Project
3. Folsom Lake College Project

As we mentioned in the last email, no pre-contact material was identified in any of the three projects. As SAS is facilitating AB 52 consultation for these projects, we requesting information on unrecorded resources that may lie in the vicinity of the project areas, and any project based recommendations you may have. We will be recording all recommendations in the CEQA report for each project, and we will forward all questions and concerns to the lead agency involved for each project. For the ARC Tech Building Project and the Folsom Lake College Project, the lead agency is the Los Rios Community College District. The Cosumnes River College is the lead agency for the Elk Grove Center Project.

Any assistance you could provide would be greatly appreciated.

Thanks,

Jason Coleman

Jason A. Coleman, M.A., R.P.A.
Owner and Principal
131 Sunset Avenue, Ste. E 120
Suisun City, CA 94585
Phone 707-718-1416 Fax 707-451-4775
www.solanoarchaeology.com



Native American Consultation Log

Project: Elk Grove Center Project, Sacramento County

Native American Contact	Contacted By	Date of Communication	Responses
Rhonda Morningstar Pope	Jason Coleman	January 3, 2020	Mailed letter and map introducing the project, stating that SAS was facilitating Ab 52 consultation, and asking for information on any known unrecorded resources.
	Jason Coleman	January 7, 2020	Sent email stating the results of the project, re-introducing the project undertaking, and requesting consultation and any information on known unrecorded resources.
	Jason Coleman	January 10, 2020	Sent email stating the results of the project, also stated that SAS was facilitating AB 52 consultation, and requested consultation and any information on known unrecorded resources.
Regina Cuellar	Jason Coleman	January 3, 2020	Mailed letter and map introducing the project, stating that SAS was facilitating Ab 52 consultation, and asking for information on any known unrecorded resources.
	Jason Coleman	January 7, 2020	Sent email stating the results of the project, re-introducing the project undertaking, and requesting consultation and any information on known unrecorded resources.
	Jason Coleman	January 10, 2020	Sent email stating the results of the project, also stated that SAS was facilitating AB 52 consultation, and requested consultation and any information on known unrecorded resources.
Pamela Cubbler	Jason Coleman	January 3, 2020	Mailed letter and map introducing the project, stating that SAS was facilitating Ab 52 consultation, and asking for information on any known unrecorded resources.
	Jason Coleman	January 7, 2020	Sent email stating the results of the project, re-introducing the project undertaking, and requesting consultation and any information on known unrecorded resources.
	Jason Coleman	January 10, 2020	Sent email stating the results of the project, also stated that SAS was facilitating AB 52 consultation, and requested consultation and any information on known unrecorded resources.
Grayson Coney	Jason Coleman	January 3, 2020	Mailed letter and map introducing the project, stating that SAS was facilitating Ab 52

Solano Archaeological Services

	Jason Coleman	January 7, 2020	consultation, and asking for information on any known unrecorded resources.
	Jason Coleman	January 10, 2020	Sent email stating the results of the project, re-introducing the project undertaking, and requesting consultation and any information on known unrecorded resources.
Clyde Prout	Jason Coleman	January 3, 2020	Mailed letter and map introducing the project, stating that SAS was facilitating Ab 52 consultation, and asking for information on any known unrecorded resources.
	Jason Coleman	January 7, 2020	Sent email stating the results of the project, re-introducing the project undertaking, and requesting consultation and any information on known unrecorded resources.
	Jason Coleman	January 10, 2020	Sent email stating the results of the project, also stated that SAS was facilitating AB 52 consultation, and requested consultation and any information on known unrecorded resources.
Don Ryberg	Jason Coleman	January 3, 2020	Mailed letter and map introducing the project, stating that SAS was facilitating Ab 52 consultation, and asking for information on any known unrecorded resources.
	Jason Coleman	January 7, 2020	Sent email stating the results of the project, re-introducing the project undertaking, and requesting consultation and any information on known unrecorded resources.
	Jason Coleman	January 10, 2020	Sent email stating the results of the project, also stated that SAS was facilitating AB 52 consultation, and requested consultation and any information on known unrecorded resources.
Sara Dutschke Setchwaelo	Jason Coleman	January 3, 2020	Mailed letter and map introducing the project, stating that SAS was facilitating Ab 52 consultation, and asking for information on any known unrecorded resources.
	Jason Coleman	January 7, 2020	Sent email stating the results of the project, re-introducing the project undertaking, and requesting consultation and any information on known unrecorded resources.
	Jason Coleman	January 10, 2020	Sent email stating the results of the project, also stated that SAS was facilitating AB 52 consultation, and requested consultation and

Solano Archaeological Services

			any information on known unrecorded resources.
Gene Whitehouse	Jason Coleman	January 3, 2020	Mailed letter and map introducing the project, stating that SAS was facilitating Ab 52 consultation, and asking for information on any known unrecorded resources.
	Jason Coleman	January 7, 2020	Sent email stating the results of the project, re-introducing the project undertaking, and requesting consultation and any information on known unrecorded resources.
	Jason Coleman	January 10, 2020	Sent email stating the results of the project, also stated that SAS was facilitating AB 52 consultation, and requested consultation and any information on known unrecorded resources.
Cosme A. Valdez	Jason Coleman	January 3, 2020	Mailed letter and map introducing the project, stating that SAS was facilitating Ab 52 consultation, and asking for information on any known unrecorded resources.
	Jason Coleman	January 7, 2020	Sent email stating the results of the project, re-introducing the project undertaking, and requesting consultation and any information on known unrecorded resources.
	Jason Coleman	January 10, 2020	Sent email stating the results of the project, also stated that SAS was facilitating AB 52 consultation, and requested consultation and any information on known unrecorded resources.
Raymond Hitchcock	Jason Coleman	January 3, 2020	Mailed letter and map introducing the project, stating that SAS was facilitating Ab 52 consultation, and asking for information on any known unrecorded resources.
	Jason Coleman	January 7, 2020	Sent email stating the results of the project, re-introducing the project undertaking, and requesting consultation and any information on known unrecorded resources.
	Jason Coleman	January 10, 2020	Sent email stating the results of the project, also stated that SAS was facilitating AB 52 consultation, and requested consultation and any information on known unrecorded resources.

ATTACHMENT C
Records Search Documentation



1/2/2020

NCIC File No.: SAC-20-2

Susan Talcott
Solano Archaeological Services
131 Sunset Avenue, #120
Suisun City, CA 94585

**Records Search Invoice for
Elk Grove Center**

Quantity	Description	Unit Price	Line Total
0	Staff research hours	150.00	0.00
1	In-house research hours	100.00	100.00
0	Staff assistance hours	40.00	0.00
19	Custom map features		150.00
0	Shapefile features	12.00	0.00
0	Digital database features	0.25	0.00
0	Quads (crossed into)		
32	Printed pages/PDF pages	0.15	4.80
		Subtotal	254.80
		Priority 50% fee	
		Total	254.80

Forward payment to:

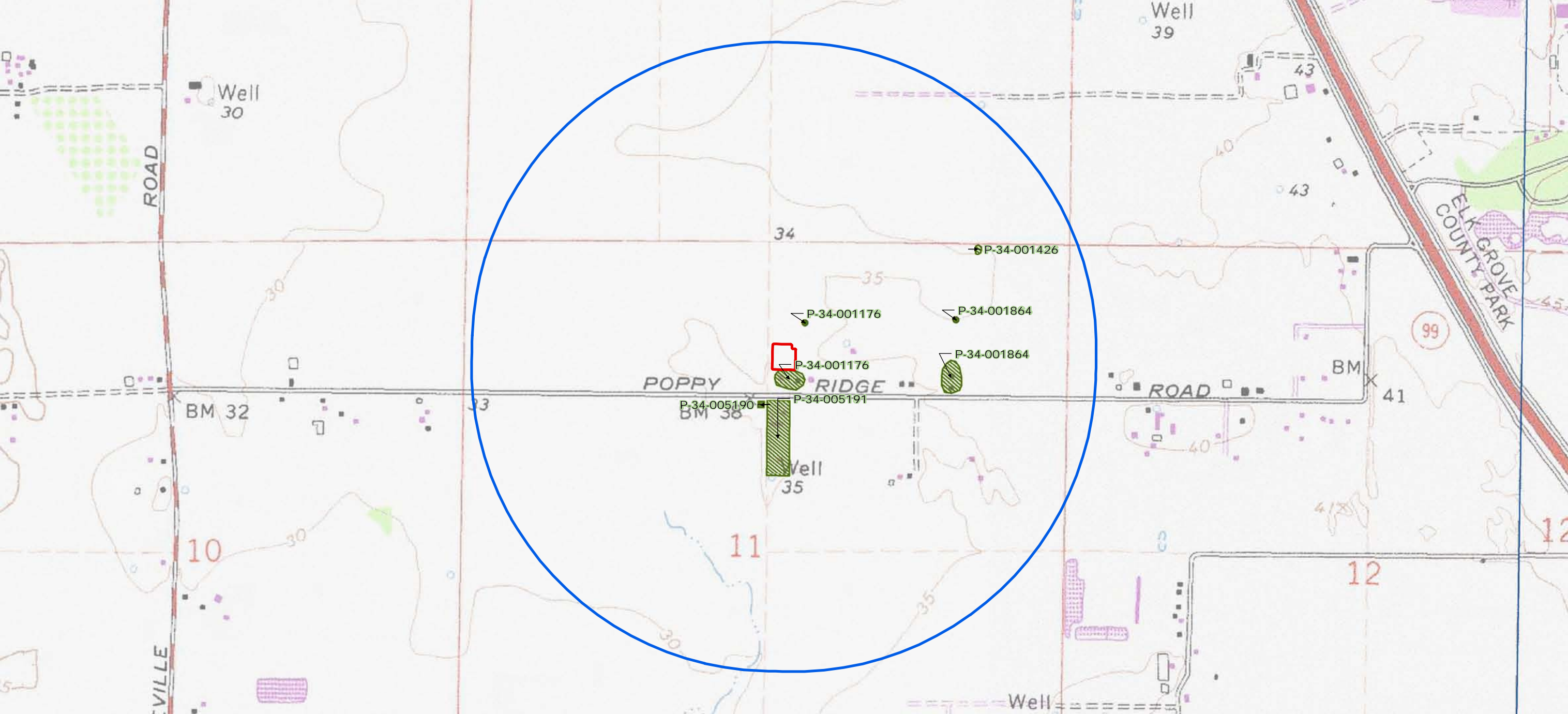
North Central Information Center
California State University, Sacramento | Folsom Hall, Suite 2042
6000 J Street | Sacramento, CA 95819-6100

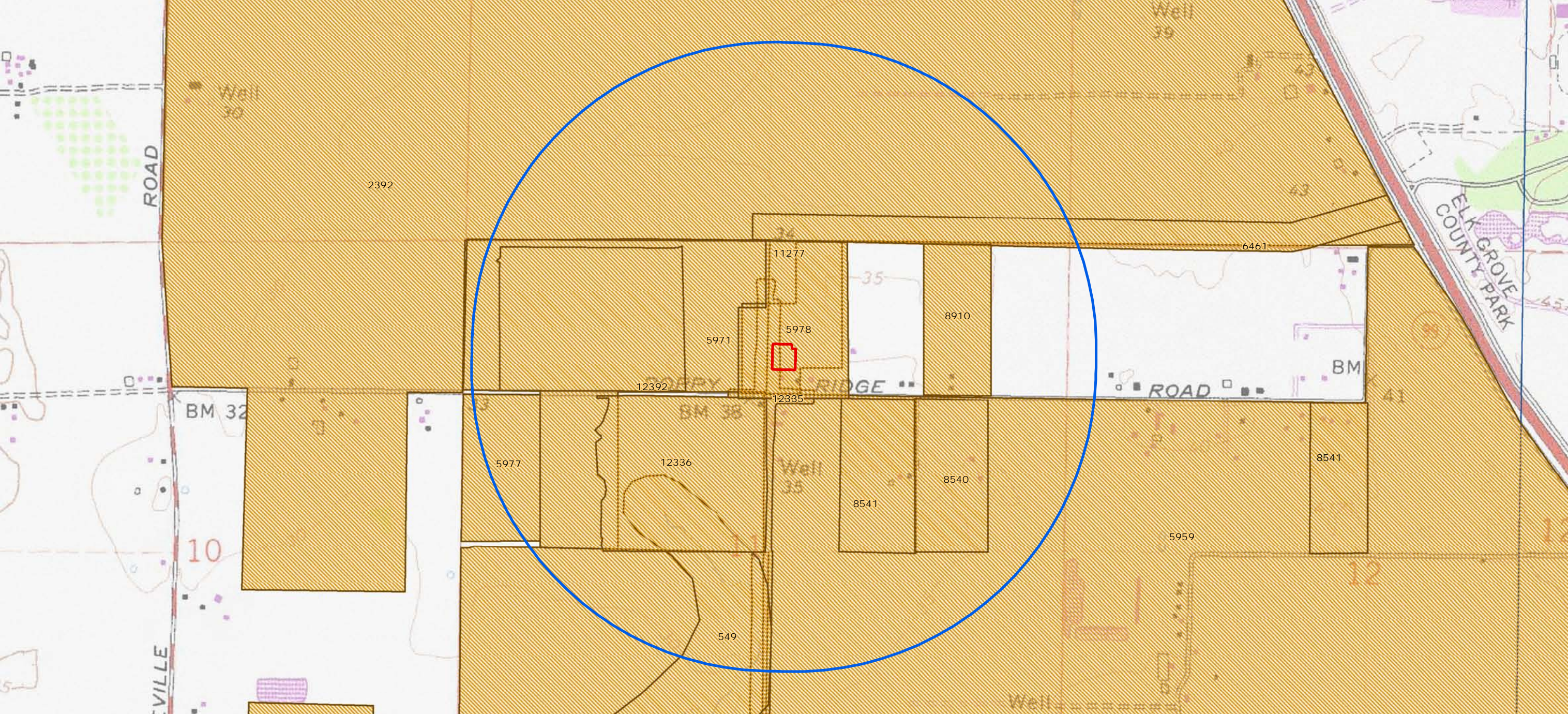
Make checks payable to:

University Enterprises, Inc.

To view the CHRIS IC Electronic Fee Structure please visit:

http://ohp.parks.ca.gov/pages/1068/files/CHRIS_IC_Fee_Structure.pdf





State of California — The Resources Agency
DEPARTMENT OF PARKS AND RECREATION
PRIMARY RECORD

Primary # P-34-1176
HRI # _____
Trinomial CA-SAC-789-H (Update)
NRHP Status Code _____
Other Listings _____
Review Code _____ Reviewer _____ Date _____

Page 1 of 4 *Resource Name or #: (Assigned by recorder) 8355 Old Poppy Ridge Road (Update)

P1. Other Identifier: None Known

*P2. Location: Not for Publication Unrestricted *a. County Sacramento

*b. USGS 7.5' Quad Florin Date 1980 T 6N; R 5E; NW 1/4 of NE 1/4 of Sec 11; MT. Diablo B.M

c. Address 8355 Old Poppy Ridge Road City Elk Grove Zip 95757-9544

d. UTM: Zone 10, 639803mE/ 4250395mN

e. Other Locational Data: From State Highway 99 exit Elk Grove Boulevard heading west, travel 1 1/2 miles and turn south onto Bruceville Road, travel 1 1/4 miles and turn east onto Old Poppy Ridge Road, travel 1 mile and arrive at 8355 Old Poppy Ridge Road. The fence line is directly across the street from the residence at 8310 Old Poppy Ridge Road.

*P3a. Description:

This historic residential complex was originally recorded by Pacific Legacy in 2004. In 2004 this resource included a residence, barn, stable, dairy processing structure and shed. This update in 2007 documents that all of these structures have been removed and sparse rubble from their demolition remains of the structures. This update also newly documents the inclusion of a deteriorated barbed wire fence line as associated with the residential complex. The large trees which surrounded the former structures still stand as well as the high and low voltage extension poles for the complex. Portions of the barbed wire fence line which enclosed the western side of the property still stand. The fence line is constructed of rectangular wooden posts of different sizes with square nails and four strands of barbed wire run irregularly along the fence line. At its southern most extent the fence line terminates at Old Poppy Ridge Road (639803mE, 4250395mN). The northern end of the fence line terminates near the cul-de-sac of a new unnamed road (639789mE, 4250742mN).

*P3b. Resource Attributes: HP46 (fence)

*P4. Resources Present: Building Structure Object Site District Element of District Other (Isolates, etc.)



P5b. Description of Photo: Overview from northern extent of the fence line looking south toward former residential complex in left frame. P1010014.jpg

*P6. Date Constructed/Age and Source: Historic Prehistoric Both

*P7. Owner and Address:
Bayless South Laguna
1425 River Park Dr. STE 201
Sacramento, CA 95815

*P8. Recorded by:
Nichole Jordan
Pacific Legacy Inc.
3081 Alhambra Drive, STE 208,
Cameron Park, CA 95682

*P9. Date Recorded: 3.14.2007

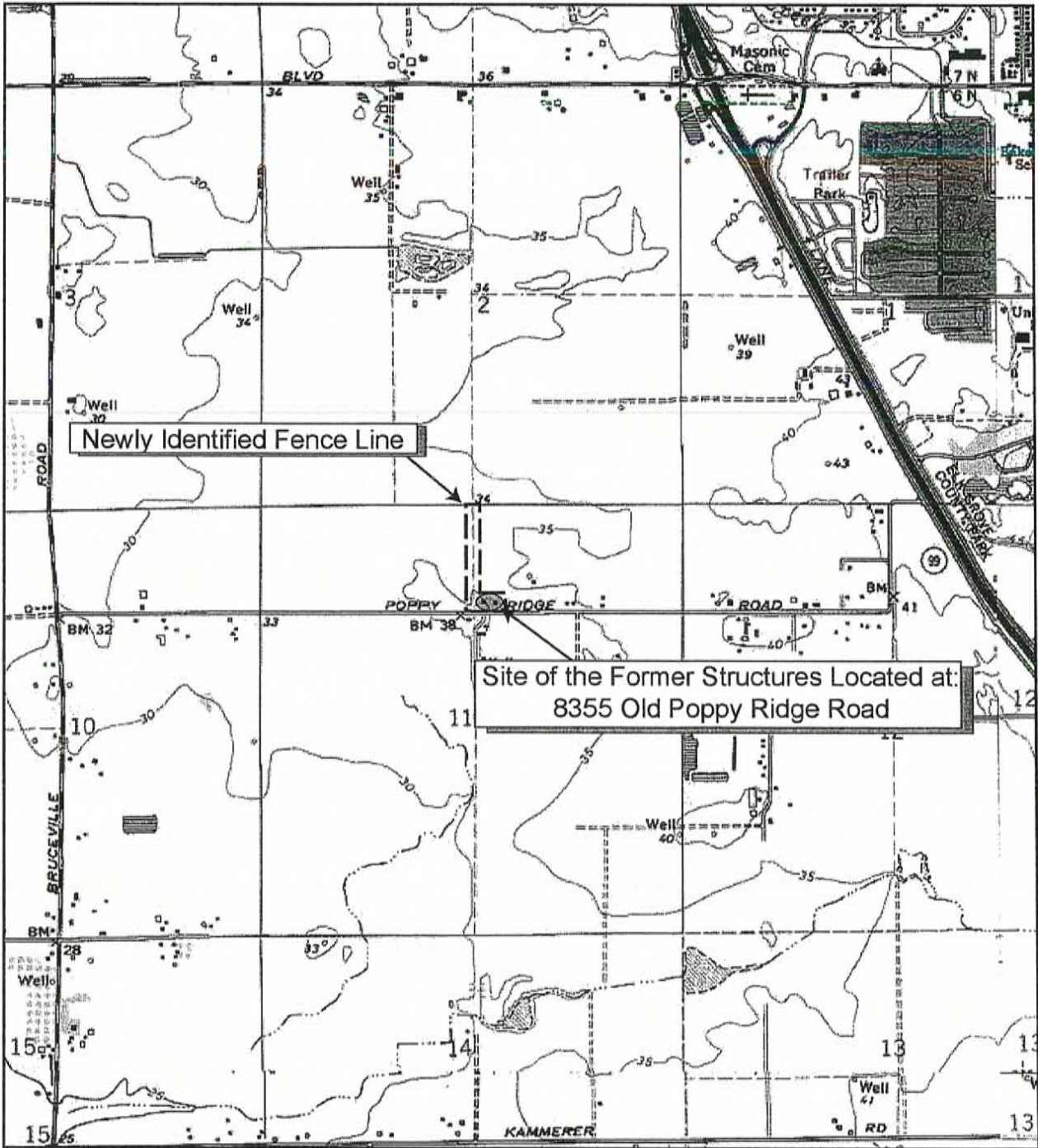
*P10. Survey Type:
Intensive Pedestrian

*P11. Report Citation: Pacific Legacy, Inc.

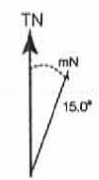
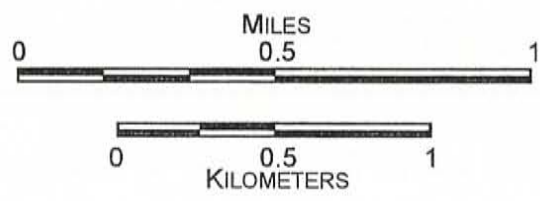
2004 Cultural Resources Inventory and Evaluation Poppy Ridge Property Sacramento County, California. On file as Pacific Legacy 2004 at the North Central Information Center, CSU, Sacramento.

*Attachments: NONE Location Map Sketch Map Continuation Sheet Building, Structure, and Object Record Archaeological Record District Record Linear Feature Record Milling Station Record Rock Art Record Artifact Record Photograph Record Other (List): _____

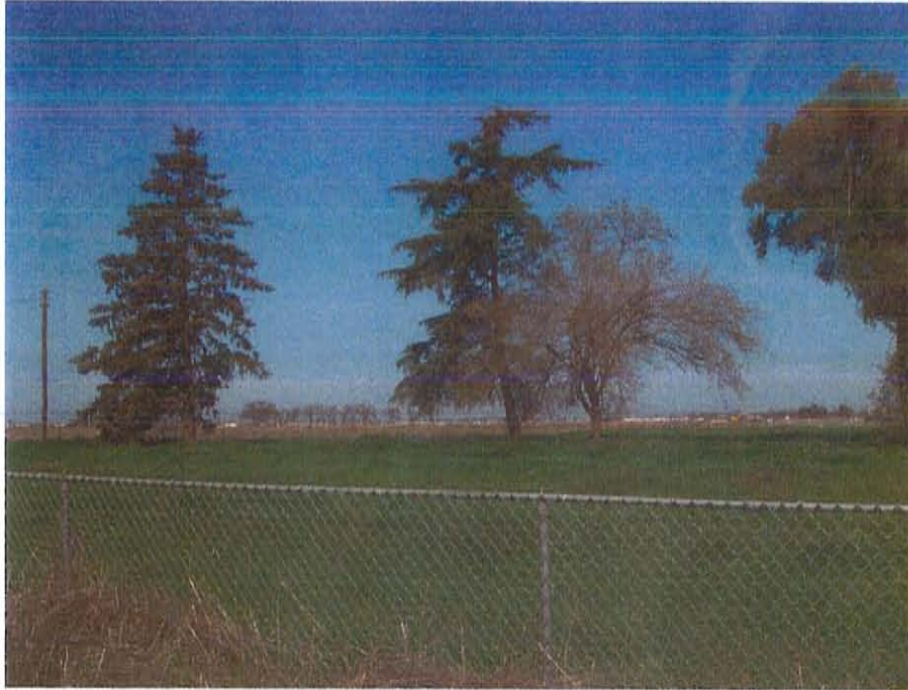
LOCATION MAP



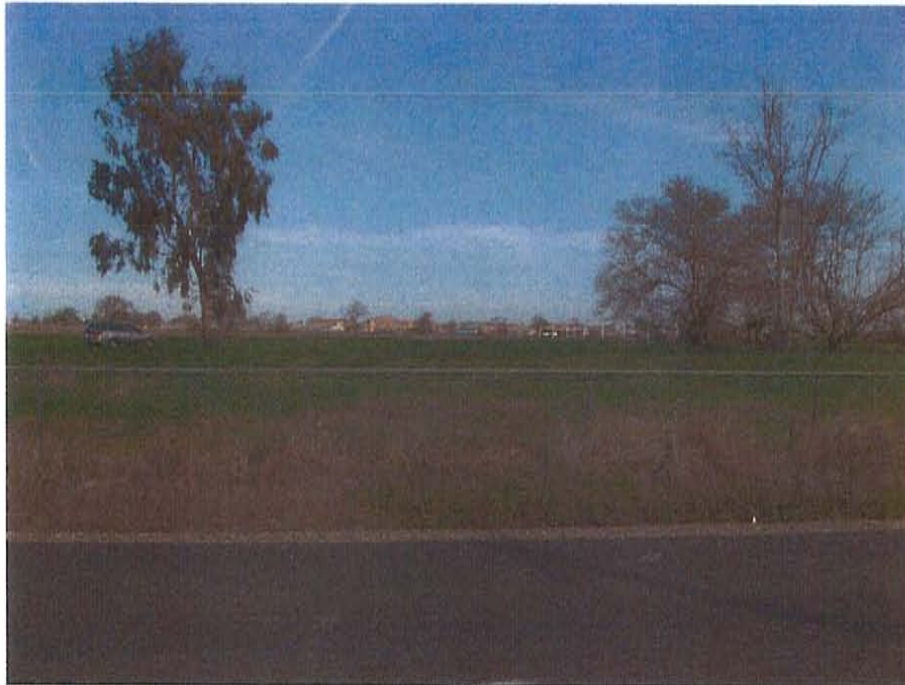
SOURCE: TOPOI National Geographic Holdings, California CD-ROM, USGS 7.5' Florin, CA 1978 (PR 1980), SCALE: 1:24,000.



Page 3 of 4 *Resource Name or # (Assigned by recorder) 8355 Old Poppy Ridge Road (Update)
*Recorded by: Nichole Jordan *Date 3.14.2007 Continuation Update



Site of the former residence at 8355 Old Poppy Ridge Road from Old Poppy Ridge Road, view northwest. 1010007.jpg



The site of the former barn, stable and dairy processing structure at 8355 Old Poppy Ridge Road from Old Poppy Ridge Road, view north. 1010007.jpg

Page 4 of 4 *Resource Name or # (Assigned by recorder) 8355 Old Poppy Ridge Road (Update)
*Recorded by: Nichole Jordan *Date 3.14.2007 Continuation Update



Close up of square nails in fence post. 1010011.jpg



Close up of barbed wire on fence posts looking north west. 1010016.jpg

State of California — The Resources Agency
 DEPARTMENT OF PARKS AND RECREATION
PRIMARY RECORD

Primary # P-34-1176-H
 HRI # _____
 Trinomial CA-SAC-789-H
 NRHP Status Code _____

Other Listings _____
 Review Code _____ Reviewer _____ Date _____

Page 1 of 18

*Resource Name or #: (Assigned by recorder) 8355 Poppy Ridge Road

P1. Other Identifier:

*P2...Location: Not for Publication Unrestricted

*a. County Sacramento and (P2c, P2e, and P2b or P2d. Attach a Location Map as necessary.)

*b. USGS 7.5' Quad Florin Date 1968 PR 1980 T6N; R5E; NW ¼ of NE ¼ of Sec 11; M.D. B.M

c. Address 8355 Poppy Ridge Road City Elk Grove Zip 95757-9544

d. UTM: (Give more than one for large and/or linear resources) Zone 10, 100639818 mE/ 4250514 mN

e. Other Locational Data: (e.g., parcel #, directions to resource, elevation, etc., as appropriate)

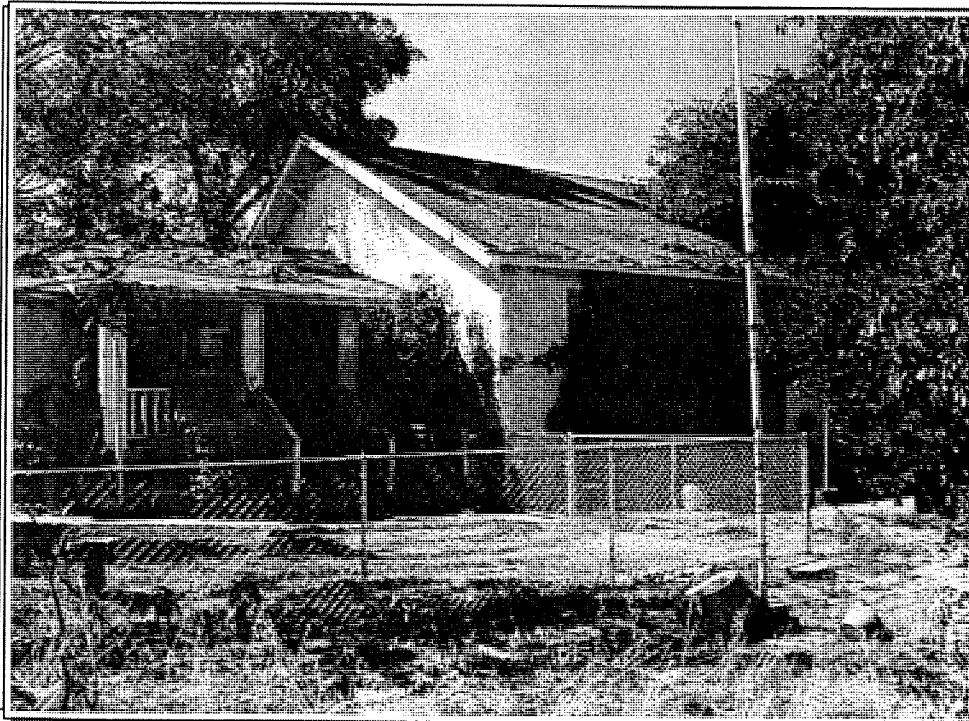
Exit SH 99 west on Elk Grove Boulevard (3.5 mi.). Turn south on Bruceville Road (1.1 mi. Turn east on Poppy

*P3a. Description: (Describe resource and its major elements. Include design, materials, condition, alterations, size, setting, and boundaries)
 The Poppy Ridge Property is typical of the agrarian properties that once surrounded the now-sprawling suburb of Elk Grove. The architectural assemblage, consisting of a residence, a small shed (tack room), and barn with associated structures, is located north of Poppy Ridge Road on the southern edge of the project area.

The one-story, single-gabled residence, measuring approximately 35 ft. long by x 25 ft. wide, is composed of two simple rectangular sections oriented east to west. The western section of the house is slightly larger in square footage and higher in elevation than the centered eastern extension. Normal-pitched roofs with composition shingles cover both sections. Foundations are obscured by stucco siding that extends to the ground.

*P3b. Resource Attributes: (List attributes and codes) HP3: single family property; HP4: ancillary buildings; HP33: Farm.

*P4. Resources Present: Building Structure Object Site District Element of District Other (Isolates, etc.)



P5b. Description of Photo: (View, date, accession #) North elevation of house. View to South. 09/10/04. PL-091004-14

*P6. Date Constructed/Age and Source: Historic Prehistoric Both
Ca. mid-twentieth century; established via USGS maps, personal interviews, chain of title, and historic context

*P7. Owner and Address:

Bayless South Laguna
1425 River Park Dr. STE 201
Sacramento, CA 95815

*P8. Recorded by: (Name, affiliation, and address) Tina Pitsenberger and Nichole Jordan, Pacific Legacy Inc., 3081 Alhambra Drive, STE 208, Cameron Park, CA 95682

*P9. Date Recorded: 9-10-04

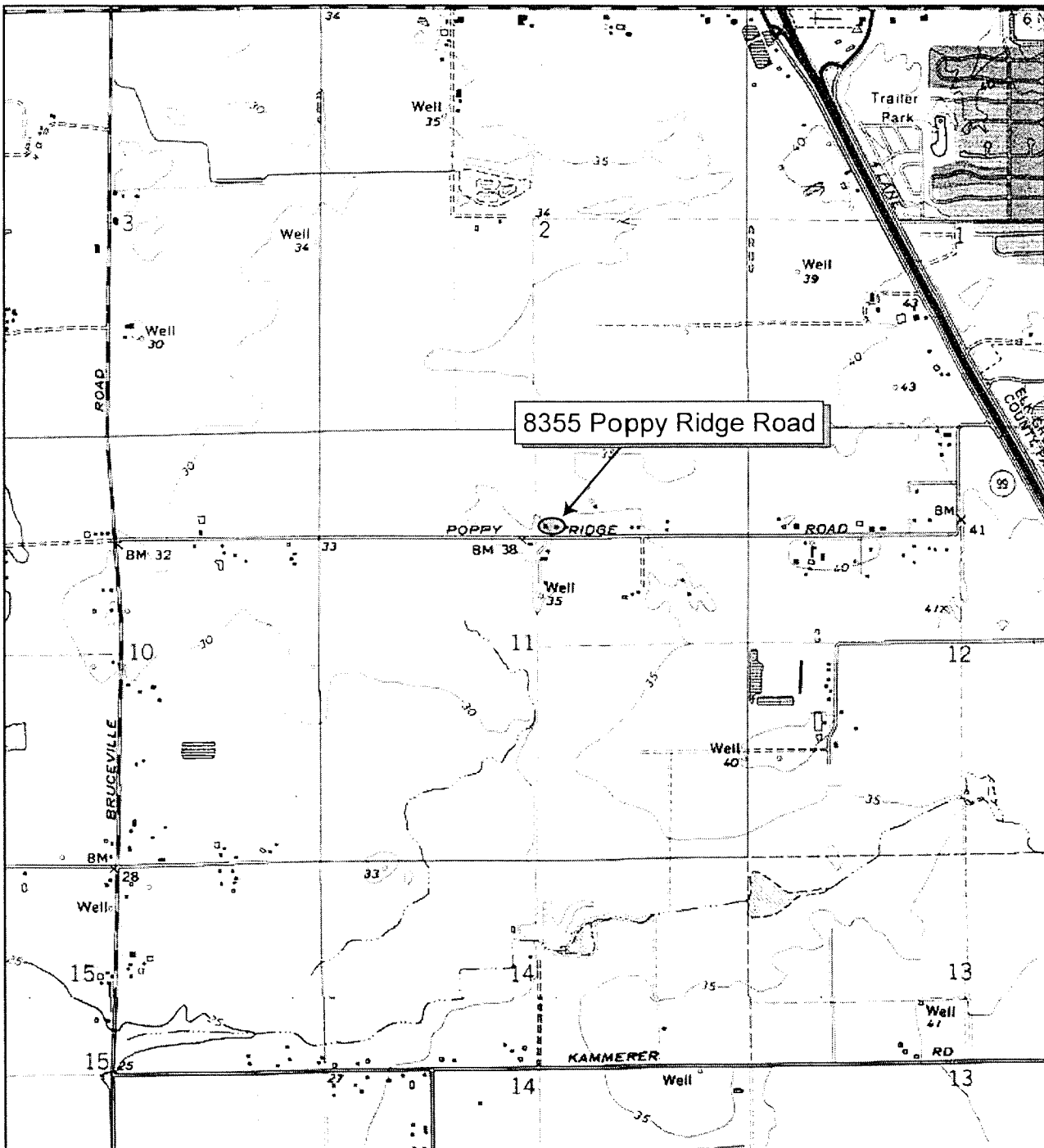
*P10. Survey Type: (Describe)
Intensive pedestrian for CEQA compliance

*P11. Report Citation: (Cite survey report and other sources, or enter "none.") Pacific Legacy. Cultural Resources Inventory and Evaluation, Poppy Ridge Property, Sacramento County, California (2004). Prepared for Pulte Home Corporation.

*Attachments: NONE Location Map Sketch Map Continuation Sheet Building, Structure, and Object Record Archaeological Record District Record Linear Feature Record Milling Station Record Rock Art Record Artifact Record Photograph Record Other (List): _____

5978

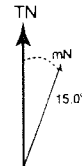
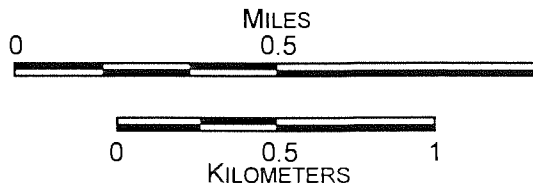
LOCATION MAP



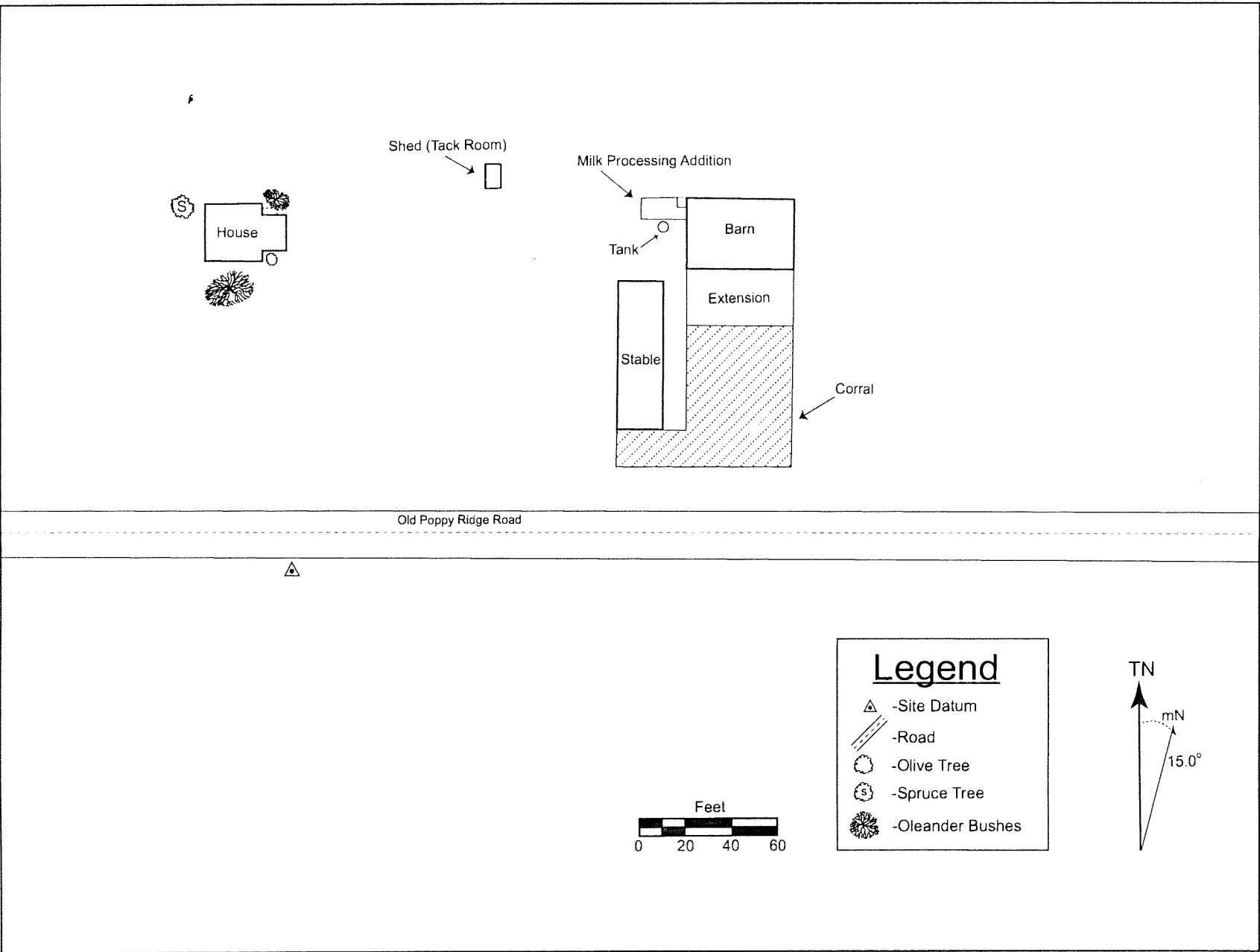
SOURCE: TOPO! National Geographic Holdings, USGS 7.5' Florin, CA 1978, SCALE: 1:24,000.



QUADRANGLE LOCATION



SKETCH MAP



P2b. 11; M.D. B.M

P2e. Ridge Road (.92 mi.). 8355 Poppy Ridge Road is on north side of the road.

P3a. Fenestration of the larger section includes a total of seven two-pane aluminum sliders: two on the north elevation, three on the west elevation, two on the south elevation, and one the east elevation south of the smaller extension. The extension has one two-paned aluminum slider on both the south and north elevations.

White stucco covers the exterior of the entire structure from the ground to the eaves. Ivy has grown over large areas of the northern and eastern elevations. Gable ends are clad with horizontal shiplap or tongue-and-groove wood siding. Moderate eave overhangs on the north and south are enclosed and affixed with aluminum rain gutters. Semi-exposed rafter ends adorned with triangular knee braces are visible on the gables of the larger section, which also have vertical louvered wood vents at the peak. The gabled end of the smaller section is dominated by a fired brick exterior chimney. Decorative brickwork wraps around the base of the building to the north elevation of the extension and forms a partial-width porch. The porch is sheltered by a shed-roofed extension supported by three square columns. Modest wooden railing contains the porch and extends down both flanks of the brick steps exiting from the building's only door.

The residence has a few features generally diagnostic of the early-twentieth-century craftsman style—decorative exposed rafter ends, overhanging eaves, and square porch supports; however, the building has been altered to such an extent that is nearly impractical to assign to it a definitive architectural style. According to a current neighbor and previous tenant, Pat Logan, the house is nearly 100 years old. The eastern extension, he said, had enclosed the original porch. Such a design would have been more consistent with the craftsman style than the layout visible today.

A small wooden-frame building on a concrete foundation is located approximately 70 ft. east of the residence. Currently used as a tack room, the 8-x-11-ft. building is orientated north to south and clad in horizontal shiplap or tongue-and-groove siding painted white. A normal-pitched front-gable roof is covered with composition shingles. The building is accessed on the west through a single-panel wooden door with a window fixed in the upper half. A large opening next to the door has been covered with plywood. The southern and eastern elevations each have a six-pane casement window with wooden frames and muntins.

Further east sits a rectangular wooden-frame barn oriented east to west and measuring 40 ft. wide x 30 ft. deep x 25 ft. high. It has a normal-pitched roof covered with corrugated steel, and is clad with well-weathered vertical board siding. The single-gabled barn has three bays that open to the north. The western bay has a large wooden sliding door. A hinged wooden opening provides access to the center bay loft, beneath which a roll-up aluminum garage door has been installed. The eastern bay has one two-paned aluminum slider. Metal stove piping with an elbow connector protrudes from the elevation near the northwest corner.

The barn has additions on both the rear (south) and the west side, and an associated corral and stable to the south/southwest. The rear addition consists of a 20-x-48-ft. wooden-frame shed covered with corrugated steel and clad on three elevations with corrugated green fiberglass siding. The western addition, which extends outward 20 ft. and is 10 ft. wide x 10 ft. high, was used for milk processing. Built on a concrete foundation, it has a low-pitched side-gabled roof covered with corrugated metal, and is clad with vertical shiplap siding painted white. Missing siding reveals board-formed concrete lower walls. A 5-x-5-ft. section abutting the barn is open on the north side. Within the sheltered area, a wooden screen door on the eastern wall provides access to the addition. The northern elevation has exposed eaves and a single window opening covered with plywood. The western elevation has one six-pane casement window with a wooden frame and muntins. A wooden door is located near the southwestern corner on the southern elevation, which also has exposed rafter tails. Two electrical panels are affixed to the wall east of the door. Immediately outside of the door, to the southeast, a steel pasteurizing tank sits on a concrete pad. According to Mr. Logan, the barn is approximately 50 years old, an age that is consistent with the building's architectural characteristics.

Page 5 of 18 *Resource Name or # (Assigned by recorder) 8355 Poppy Ridge Road
*Recorded by: Tina Pitsenberger and Nichole Jordan *Date 9-10-04 Continuation Update

P3a. An associated corral and stable are located behind (south) the barn. The corral is enclosed variously by building walls and three-rail wooden or wire mesh fencing. The wooden-framed equipment shed, which measure 65 ft. long x 20 ft. wide, is oriented north to south. It has an asymmetrical side-gabled roof covered with corrugated steel. The northern elevation is clad with horizontal wooden siding, while the eastern and southern sections are covered in corrugated fiberglass. Except for a small northern area enclosed with plywood, the western elevation is open, providing a view of concrete footings.

B1. Historic Name: N/A
B2. Common Name: 8355 Poppy Ridge Road
B3. Original Use: Single family residence
B4. Present Use: Single family residence

*B5. Architectural Style: Rural vernacular with Craftsman elements

*B6. Construction History: (Construction date, alterations, and date of alterations)
The residence has a few features generally diagnostic of the early-twentieth-century craftsman style—decorative exposed rafter ends, overhanging eaves, and square porch supports; however, the building has been altered to such an extent that is nearly impractical to assign to it a definitive architectural style. Significant alterations include an extension on the western elevation with fired brick chimney, aluminum sliders, and stucco siding. According to a current neighbor and previous tenant, Pat Logan, the house is nearly 100 years old. The eastern extension, he said, had enclosed the original porch.

*B7. Moved? No Yes Unknown Date: N/A Original Location: N/A

*B8. Related Features:
The residence is an element of a rural farm complex that also includes a shed (tack room) and barn with associated features.

B9a. Architect: Unknown b. Builder: Unknown

*B10. Significance: Theme Agriculture Development Area Southern Sacramento County

Period of Significance 1906-1950s Property Type farm complex Applicable Criteria A, B, C, D
(Discuss importance in terms of historical or architectural context as defined by theme, period, and geographic scope. Also address integrity.)

Although the Poppy Ridge Property is associated with an early-twentieth-century reorganization of the area's agricultural lands that saw large holdings subdivided and sold off, as well as a concomitant shift from grain growing to dairying, extant historic-period resources—the house, shed (tack room), and barn—have lost their integrity through substantial alterations and additions; they therefore do not convey an association with these or any other broad patterns of local history. A 100-year chain of title for the property, which likely begins prior to the construction of any of the extant structures, did not reveal any association with the lives of persons important to our past. Extant architectural features do not embody any distinctive characteristics of a type, period, region, or method of construction, nor do they represent the work of an important creative individual, or possess high artistic values. Finally, the cultural resources identified on the property do not appear to have the potential to yield information important to our prehistory or history. As a result, the Poppy Ridge Property does not appear to be eligible for listing in the CRHR or the NRHP.

B11. Additional Resource Attributes: (List attributes and codes) HP3:single family property; HP33: Farm

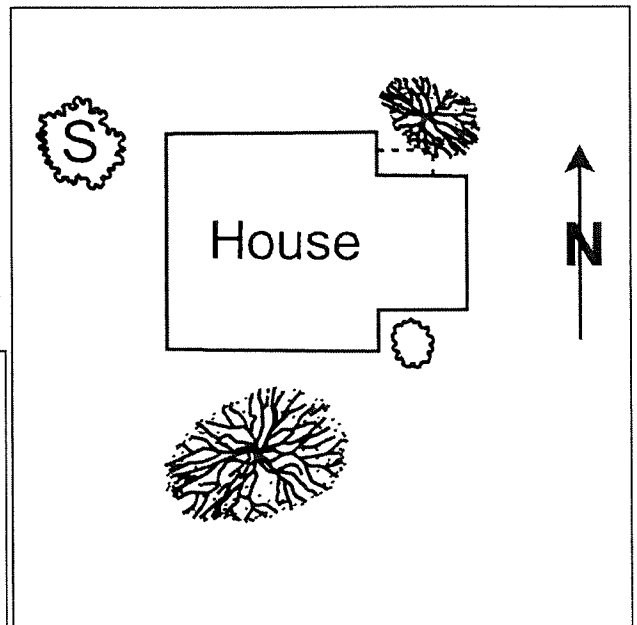
*B12. References: Jeffery Howe, The Houses We Live In (2002); Virginia and Lee McAlester, A Field Guide to American Houses (2002).

B13. Remarks:

*B14. Evaluator: Dr. Douglas M. Edwards

*Date of Evaluation: 11/15/04

(This space reserved for official comments.)



Page 7 of 18

*NRHP Status Code 6Z

*Resource Name or # (Assigned by recorder) _____

B1. Historic Name: N/A
B2. Common Name: 8355 Poppy Ridge Road
B3. Original Use: Undetermined farm outbuilding
B4. Present Use: Tack Room

*B5. Architectural Style: Rural vernacular

*B6. Construction History: (Construction date, alterations, and date of alterations)
Historic maps, chain of title, personal interviews, and the historic context suggest that the building dates to the mid-nineteenth century.

*B7. Moved? No Yes Unknown Date: N/A Original Location: N/A

*B8. Related Features:
The shed (tack room) is an element of a rural farm complex that also includes a residence and barn with associated features.

B9a. Architect: Unknown b. Builder: Unknown

*B10. Significance: Theme Agriculture Development Area Southern Sacramento County

Period of Significance 1906-1950s Property Type farm complex Applicable Criteria A, B, C, D

(Discuss importance in terms of historical or architectural context as defined by theme, period, and geographic scope. Also address integrity.)

Although the Poppy Ridge Property is associated with an early-twentieth-century reorganization of the area's agricultural lands that saw large holdings subdivided and sold off, as well as a concomitant shift from grain growing to dairying, extant historic-period resources—the house, shed (tack room), and barn—have lost their integrity through substantial alterations and additions; they therefore do not convey an association with these or any other broad patterns of local history. A 100-year chain of title for the property, which likely begins prior to the construction of any of the extant structures, did not reveal any association with the lives of persons important to our past. Extant architectural features do not embody any distinctive characteristics of a type, period, region, or method of construction, nor do they represent the work of an important creative individual, or possess high artistic values. Finally, the cultural resources identified on the property do not appear to have the potential to yield information important to our prehistory or history. As a result, the Poppy Ridge Property does not appear to be eligible for listing in the CRHR or the NRHP.

B11. Additional Resource Attributes: (List attributes and codes)

*B12. References: Jeffery Howe, *The Houses We Live In* (2002); Virginia and Lee McAlester, *A Field Guide to American Houses* (2002).

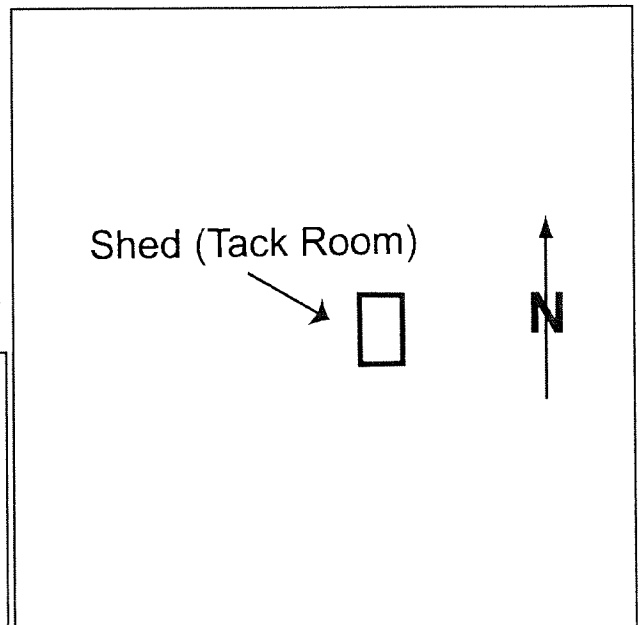
HP4: ancillary buildings; HP33: Farm

B13. Remarks:

*B14. Evaluator: Dr. Douglas M. Edwards

*Date of Evaluation: 11/15/04

(This space reserved for official comments.)



B1. Historic Name: N/A
 B2. Common Name: 8355 Poppy Ridge Road
 B3. Original Use: Barn
 B4. Present Use: Barn

*B5. Architectural Style: Rural vernacular

*B6. Construction History: (Construction date, alterations, and date of alterations)
 The barn has been subject to numerous alteration, including the installation of an aluminum roll-up garage door in the center bay and an aluminum slider in the east bay. Moreover, it has additions on both the rear (south) and the west side, and an associated corral and stable to the south/southwest. . The rear addition consists of a wooden-frame shed covered with corrugated steel and clad on three elevations with corrugated green fiberglass siding. The western addition was used for milk processing. According to Mr. Logan, the barn is approximately 50 years old, an age that is consistent with the building's architectural characteristics. The date of the alteration and additions is unknown.

*B7. Moved? No Yes Unknown Date: _____ Original Location: _____

*B8. Related Features:
 The barn and its associated features is an element of a rural farm complex that also includes a residence and shed (tack room).

B9a. Architect: Unknown b. Builder: Unknown

*B10. Significance: Theme Agriculture Development Area Southern Sacramento County
 Period of Significance 1906-1950s Property Type farm complex Applicable Criteria A, B, C, D

(Discuss importance in terms of historical or architectural context as defined by theme, period, and geographic scope. Also address integrity)

Although the Poppy Ridge Property is associated with an early-twentieth-century reorganization of the area's agricultural lands that saw large holdings subdivided and sold off, as well as a concomitant shift from grain growing to dairying, extant historic-period resources—the house, shed (tack room), and barn—have lost their integrity through substantial alterations and additions; they therefore do not convey an association with these or any other broad patterns of local history. A 100-year chain of title for the property, which likely begins prior to the construction of any of the extant structures, did not reveal any association with the lives of persons important to our past. Extant architectural features do not embody any distinctive characteristics of a type, period, region, or method of construction, nor do they represent the work of an important creative individual, or possess high artistic values. Finally, the cultural resources identified on the property do not appear to have the potential to yield information important to our prehistory or history. As a result, the Poppy Ridge Property does not appear to be eligible for listing in the CRHR or the NRHP.

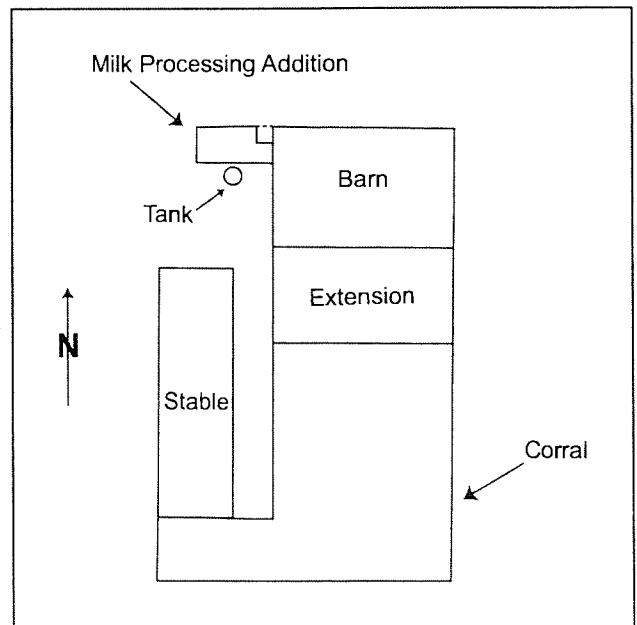
B11. Additional Resource Attributes: (List attributes and codes) HP4: ancillary buildings; HP33: Farm

*B12. References: Jeffery Howe, *The Houses We Live In* (2002);
 Virginia and Lee McAlester, *A Field Guide to American Houses* (2002).

B13. Remarks:

*B14. Evaluator: Dr. Douglas M. Edwards
 *Date of Evaluation: 11/15/04

(This space reserved for official comments.)



State of California " The Resources Agency
 DEPARTMENT OF PARKS AND RECREATION
PHOTOGRAPH RECORD

Primary P-34-1176-H
 HRI

 #

Trinomial CA-5AC-789-H

Page 9 of 18 Project Name: 8355 Poppy Ridge Road Year 2004

Camera Format: Digital Lens Size: N/A

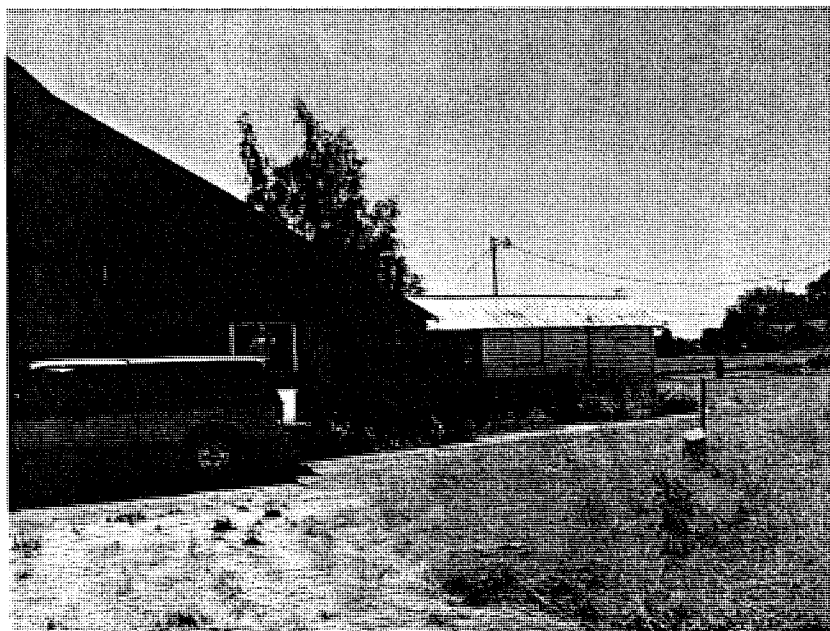
Film Type and Speed: N/A Negatives Kept at: Pacific Legacy, Inc

Mo.	Day	Time	Exp./Frame	Subject/Description	View Toward	Accession #
09	10		1	North elevation of barn	South	PL-091004-1
09	10		2	North elevation of barn and milk processing addition	Southwest	PL-091004-2
09	10		3	West elevation of barn	East	PL-091004-3
09	10		4	East elevation of barn	Southwest	PL-091004-4
09	10		5	South elevation of barn and shed extension	North	PL-091004-5
09	10		6	East elevation of stable	West	PL-091004-6
09	10		7	North elevation of milk processing addition	Southwest	PL-091004-7
09	10		8	West elevation of barn and milk processing addition	East	PL-091004-8
09	10		9	East elevation of residence	West	PL-091004-9
09	10		10	North elevation of residence	South	PL-091004-10
09	10		11	North elevation of residence	Southwest	PL-091004-11
09	10		12	West elevation of residence	Southeast	PL-091004-12
09	10		13	South elevation of resident	Northwest	PL-091004-13
09	10		14	Southwest corner of residence	Northeast	PL-091004-14
09	10		15	West elevation of stable	East	PL-091004-15
09	10		16	West and south elevations of shed (tack room)	Northeast	PL-091004-16
09	10		17	South elevation of barn and stable	North	PL-091004-17

Photograph Record



PL-091004-1



PL-091004-2

Page 11 of 18

*Resource Name or # (Assigned by recorder) 8355 Poppy Ridge Road

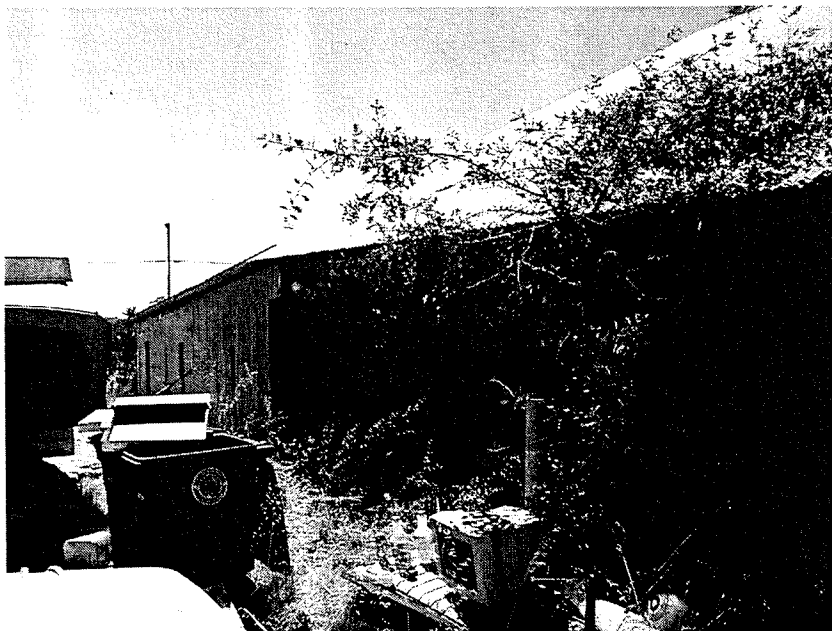
*Recorded by: Tina Pitsenberger/Nichole Jordan

*Date 9-10-04 Continuation Update

Photograph Record



PL-091004-3



PL-091004-4

State of California — The Resources Agency
DEPARTMENT OF PARKS AND RECREATION
CONTINUATION SHEET

Primary # P.34-1176-H
HRI # _____
Trinomial CA-SAC-789-H

Page 12 of 18

*Resource Name or # (Assigned by recorder) 8355 Poppy Ridge Road

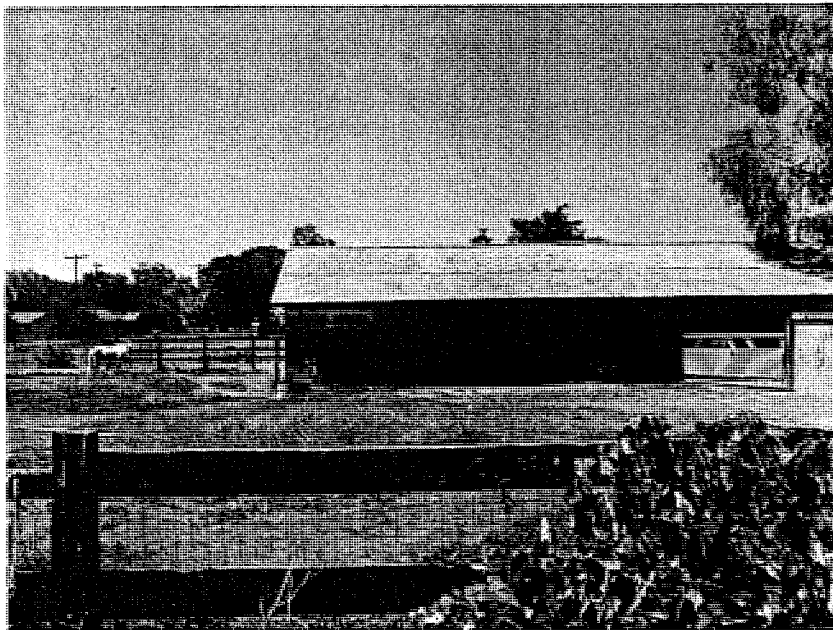
*Recorded by: Tina Pitsenberger/Nichole Jordan

*Date 9-10-04 Continuation Update

Photograph Record

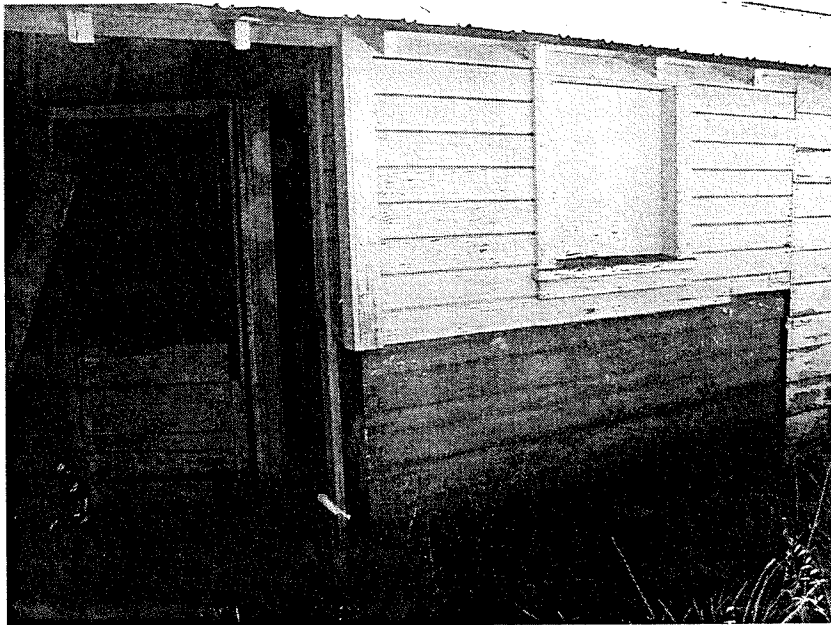


PL-091004-5

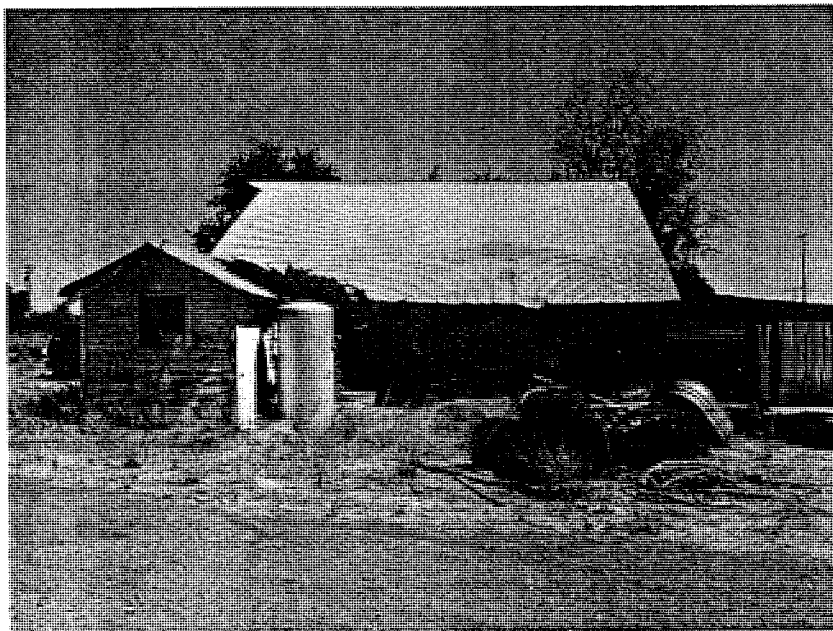


PL-091004-6

Photograph Record



PL-091004-7



PL-091004-8

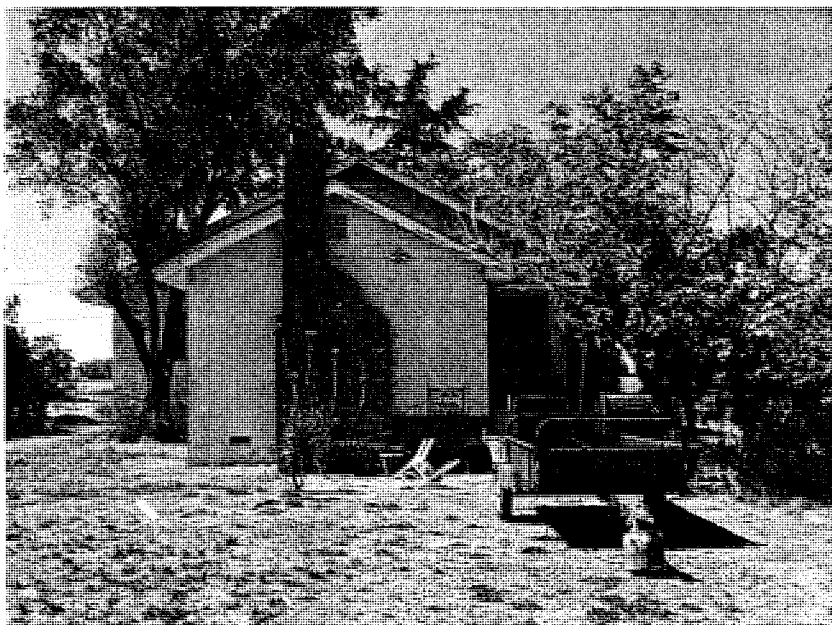
Page 14 of 18

*Resource Name or # (Assigned by recorder) 8355 Poppy Ridge Road

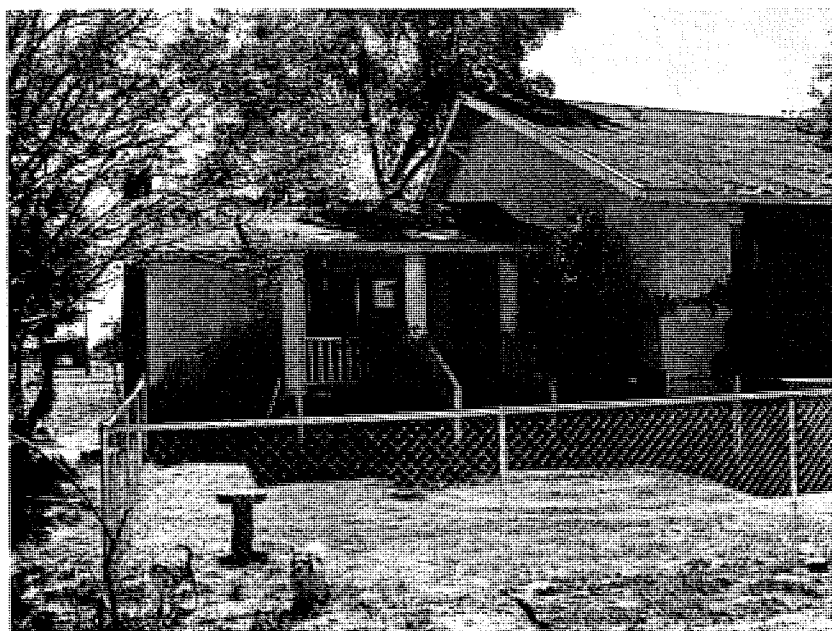
*Recorded by: Tina Pitsenberger/Nichole Jordan

*Date 9-10-04 Continuation Update

Photograph Record



PL-091004-9



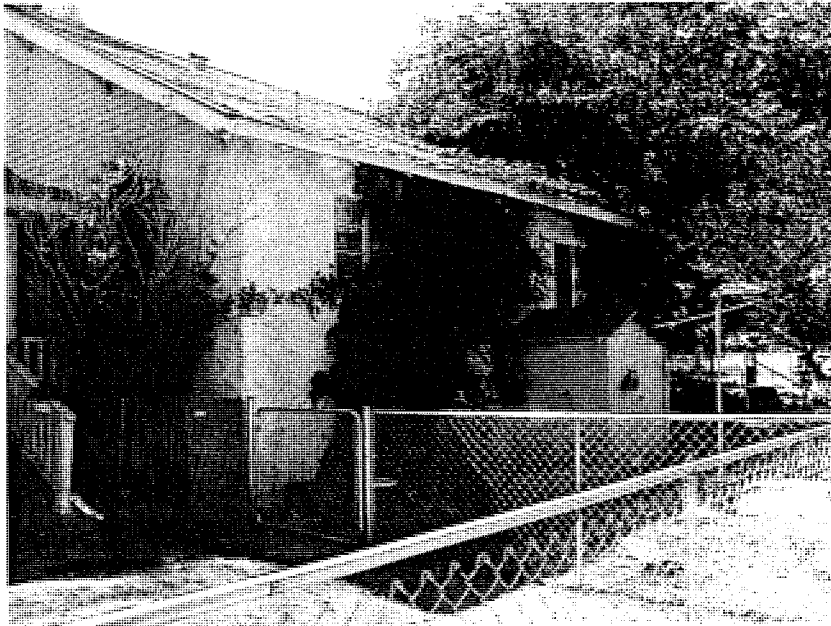
PL-091004-10

State of California — The Resources Agency
DEPARTMENT OF PARKS AND RECREATION
CONTINUATION SHEET

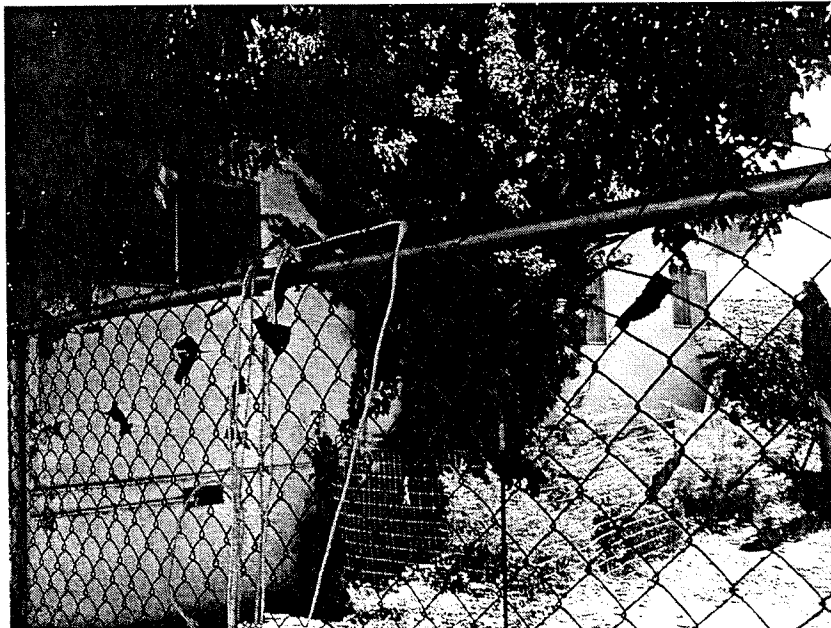
Primary # P.34-1176-H
HRI # _____
Trinomial CA-SAC-789-H

Page 15 of 18 *Resource Name or # (Assigned by recorder) 8355 Poppy Ridge Road
*Recorded by: Tina Pitsenberger/Nichole Jordan *Date 9-10-04 Continuation Update

Photograph Record



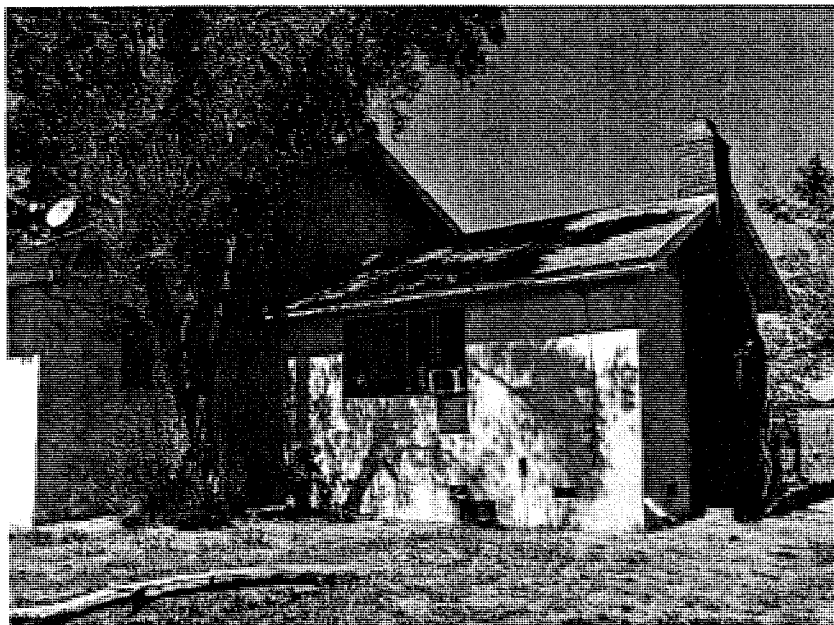
PL-091004-11



PL-091004-12

Page 16 of 18 *Resource Name or # (Assigned by recorder) 8355 Poppy Ridge Road
*Recorded by: Tina Pitsenberger/Nichole Jordan *Date 9-10-04 Continuation Update

Photograph Record



PL-091004-13



PL-091004-14

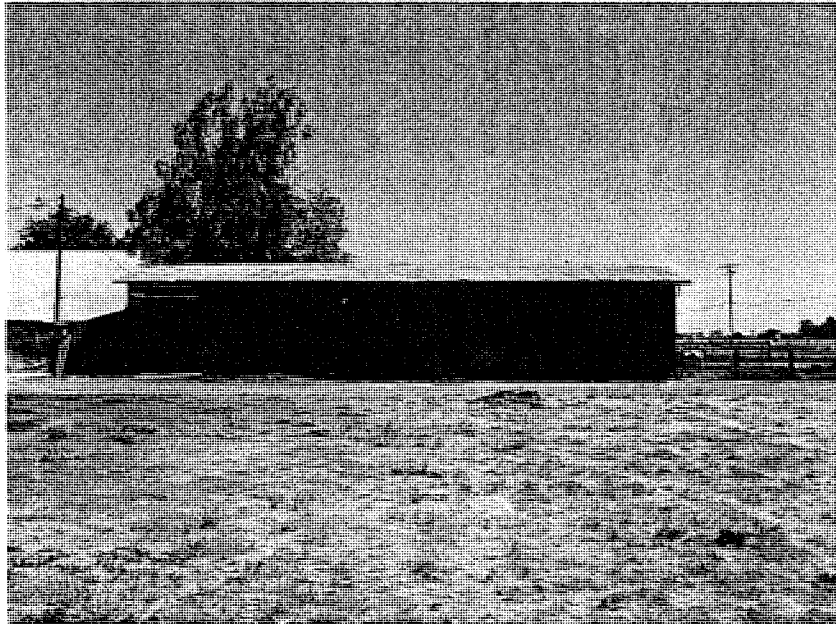
Page 17 of 18

*Resource Name or # (Assigned by recorder) 8355 Poppy Ridge Road

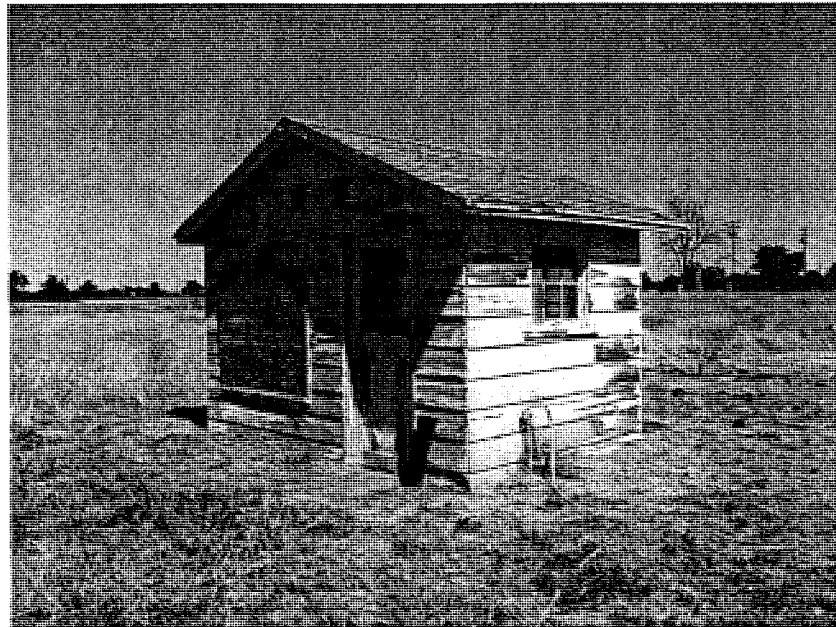
*Recorded by: Tina Pitsenberger/Nichole Jordan

*Date 9-10-04 Continuation Update

Photograph Record



PL-091004-15



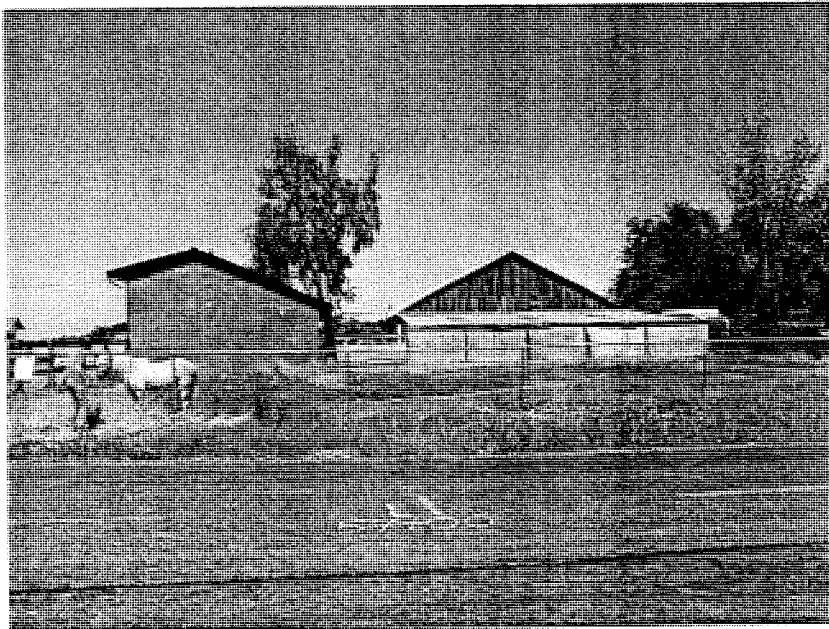
PL-091004-16

State of California – The Resources Agency
DEPARTMENT OF PARKS AND RECREATION
CONTINUATION SHEET

Primary # P-34-1176-H
HRI # _____
Trinomial CA-54C-789-H

Page 18 of 18 *Resource Name or # (Assigned by recorder) 8355 Poppy Ridge Road
*Recorded by: Tina Pitsenberger/Nichole Jordan *Date 9-10-04 Continuation Update

Photograph Record



PL-091004-17

ATTACHMENT D

Photographs



Plate 1. Overview from southwest corner of the Project area near Big Horn Boulevard, facing north.



Plate 2. Overview from northwest corner of Project area. Existing Elk Grove Center Building in background, facing east.



Plate 3. Overview from southwest corner of Project area, facing east



Plate 4. Project area overview, facing southwest.