
APPENDIX S
AMBIENT NOISE MEASUREMENT DATA



Noise Measurement Report Form – Part A

Date: 11/22/2019 Day of Week: Friday Time: 8:50 am Project No. 7023

Monitoring Site ID: 1 Monitoring Site Address: 172 Bliss Canyon Rd

Measurement Taken By: Lisa Ahn, Victor Paitimusa of UltraSystems Environmental

Approximate Wind Speed: _____ mph [km/hr] Approximate Wind Direction: From the _____

Approximate distance of sound level meter from receptor location: 25 feet

Approximate distance of sound level meter from construction site: _____
(Leave Blank for Baseline Ambient)

Receptor Land Use (Check One): Residential Institutional Comm./Ind. Recreational

Sound Level Meter: Make and Model: Quest SoundPro DL-1-1/3 Serial Number: _____

Meter Setting: A-Weighted Sound Level (SLOW) A-Weighted Sound Level (FAST)

Measurement Start Time: 8:50 am Measurement End Time: 9:05 am

Total Measurement Time: 15 minutes Session File Name (e.g., S012): S096

Check the measurement purpose:

Baseline condition Ongoing construction Major change Complaint response

Measurement Results (dB):

Measurement Type	Measured Levels	Noise Criteria Threshold	Exceedance
CALIBRATION	Pre: <u>114</u> Post: <u>114</u>	n/a	n/a
L _{eq} (h)	Slow: <u>43.9</u> Fast: _____		
L _{max}	Slow: <u>57.1</u> Fast: _____	n/a	n/a
L ₉₀	Slow: <u>36.3</u> Fast: _____	n/a	n/a

Field Notes:

- Sensitive receptor (house) elevated approx. 20ft above Flood Control Rd.
- Ridgeline on the other side of Flood Control Rd.
- Ridgeline between project site and sensitive receptor.

Noise Monitor's Signature: [Signature] Date: 11/22/19



Noise Measurement Report Form – Part B

Date: 11/22/2019 Day of Week: Friday Time: 8:50

Monitoring Site ID: 1 Monitoring Site Address: _____

Site Map

Plan View (Indicate site location, receptor location, meter location, distance in feet to landmarks, roadways, travel lane directions, geographical objects: trees, water, buildings, signs, store names, hydrants, power & telephone lines, manholes, etc.)

North Arrow (fill-in)

Project site

ridge

Flood Control Rd.

elevated roadway

sensitive receiver

Elevation View (Indicate terrain, roadway, height and location of receptor, meter, walls, barriers, buildings, etc.)

Latitude: <u>34.15631° N</u>	Longitude: <u>117.96629° W</u>	Elevation: <u>943</u>
------------------------------	--------------------------------	-----------------------

Session Report

11/25/2019

Information Panel

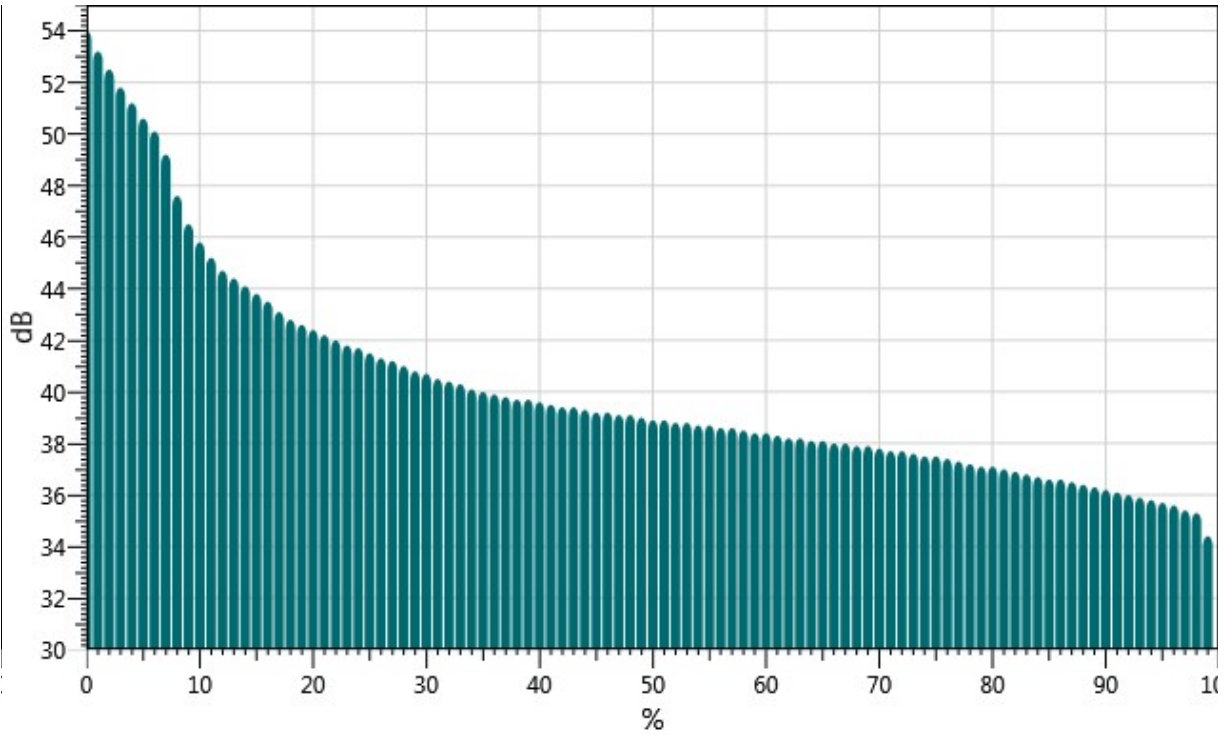
Name S096_BLH080004_25112019_142140
Start Time 11/22/2019 8:49:56 AM
Stop Time 11/22/2019 9:04:56 AM
Device Name BLH080004
Model Type SoundPro DL
Device Firmware Rev R.13H
Comments

Summary Data Panel

<u>Description</u>	<u>Meter</u>	<u>Value</u>	<u>Description</u>	<u>Meter</u>	<u>Value</u>
Leq	1	43.9 dB	L90	1	36.3 dB
Lmax	1	57.1 dB			
Exchange Rate	1	3 dB	Weighting	1	A
Response	1	SLOW	Bandwidth	1	OFF
Lmax	2	59 dB	Lmin	2	33.5 dB
Leq	2	43.8 dB			
Exchange Rate	2	3 dB	Weighting	2	A
Response	2	FAST			

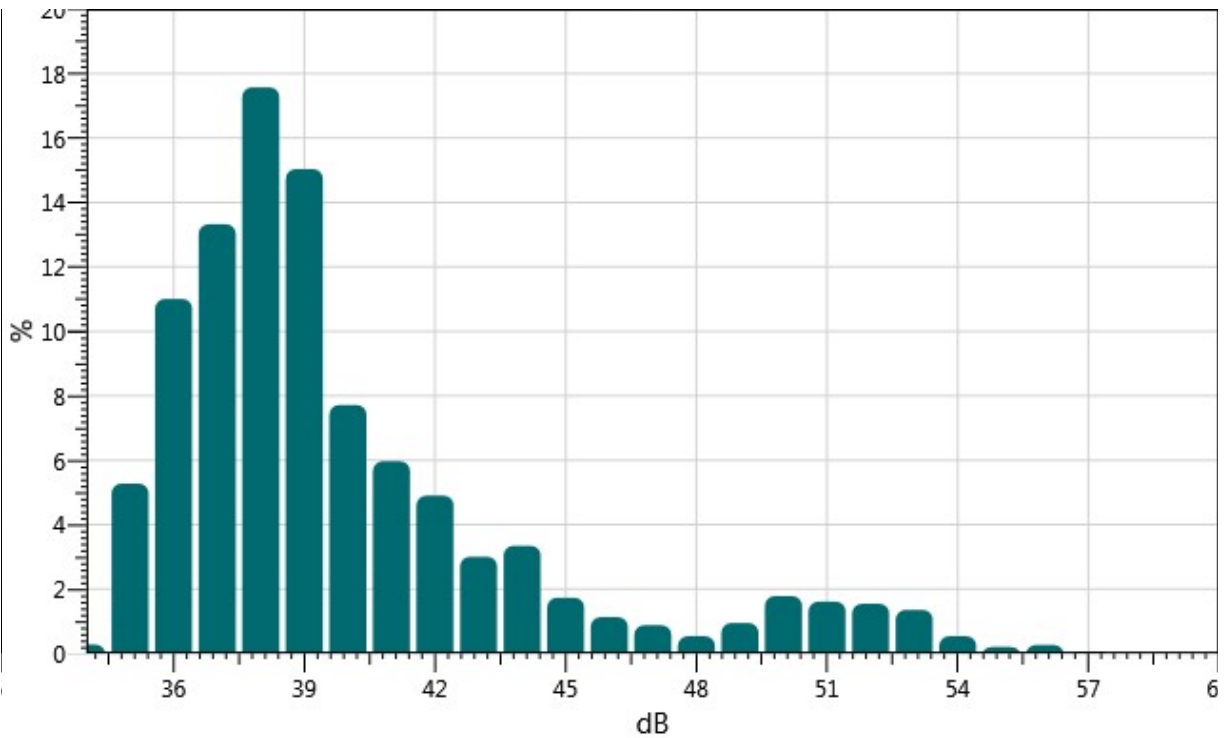
Exceedance Chart

S096_BLH080004_25112019_142140: Exceedance Chart



Statistics Chart

S096_BLH080004_25112019_142140: Statistics Chart



Statistics Table

dB:	0.0	0.1	0.2	0.3	0.4	0.5	0.6	0.7	0.8	0.9	%
34:	0.00	0.00	0.00	0.00	0.00	0.01	0.04	0.08	0.07	0.08	0.28
35:	0.08	0.11	0.17	0.27	0.37	0.78	0.77	0.76	0.89	1.07	5.27
36:	1.23	0.81	0.92	0.86	1.02	1.11	1.32	1.18	1.30	1.24	11.01
37:	1.27	1.14	1.19	1.20	1.23	1.27	1.33	1.30	1.67	1.71	13.32
38:	1.86	1.74	1.83	1.74	1.63	1.53	1.64	1.90	1.84	1.86	17.57
39:	2.13	1.24	1.77	1.57	1.52	1.43	1.38	1.38	1.46	1.15	15.03
40:	0.91	0.91	0.93	0.76	0.78	0.74	0.73	0.67	0.67	0.63	7.72
41:	0.58	0.59	0.62	0.65	0.52	0.45	0.60	0.75	0.70	0.51	5.96
42:	0.56	0.43	0.44	0.55	0.40	0.60	0.45	0.56	0.43	0.47	4.90
43:	0.37	0.34	0.29	0.37	0.28	0.27	0.24	0.29	0.29	0.28	3.01
44:	0.27	0.32	0.44	0.43	0.31	0.33	0.31	0.40	0.32	0.23	3.34
45:	0.23	0.16	0.14	0.16	0.20	0.24	0.14	0.15	0.16	0.14	1.73
46:	0.14	0.13	0.13	0.18	0.09	0.08	0.13	0.09	0.07	0.10	1.13
47:	0.10	0.08	0.08	0.08	0.09	0.10	0.11	0.09	0.07	0.07	0.88
48:	0.06	0.06	0.03	0.05	0.05	0.06	0.05	0.06	0.05	0.07	0.54
49:	0.06	0.08	0.10	0.12	0.13	0.09	0.11	0.10	0.09	0.10	0.95
50:	0.15	0.17	0.18	0.18	0.15	0.23	0.20	0.19	0.20	0.13	1.78
51:	0.22	0.20	0.12	0.14	0.11	0.15	0.19	0.16	0.15	0.17	1.61
52:	0.17	0.18	0.14	0.19	0.12	0.15	0.13	0.13	0.13	0.20	1.55
53:	0.14	0.18	0.10	0.08	0.11	0.14	0.17	0.16	0.15	0.13	1.35
54:	0.05	0.06	0.06	0.03	0.03	0.05	0.04	0.04	0.08	0.08	0.54
55:	0.02	0.02	0.02	0.02	0.02	0.02	0.02	0.03	0.02	0.03	0.20
56:	0.03	0.02	0.04	0.04	0.03	0.02	0.02	0.02	0.03	0.03	0.27
57:	0.04	0.02	0.00	0.00	0.00	0.00	0.00	0.00	0.00	0.00	0.06

Exceedance Table

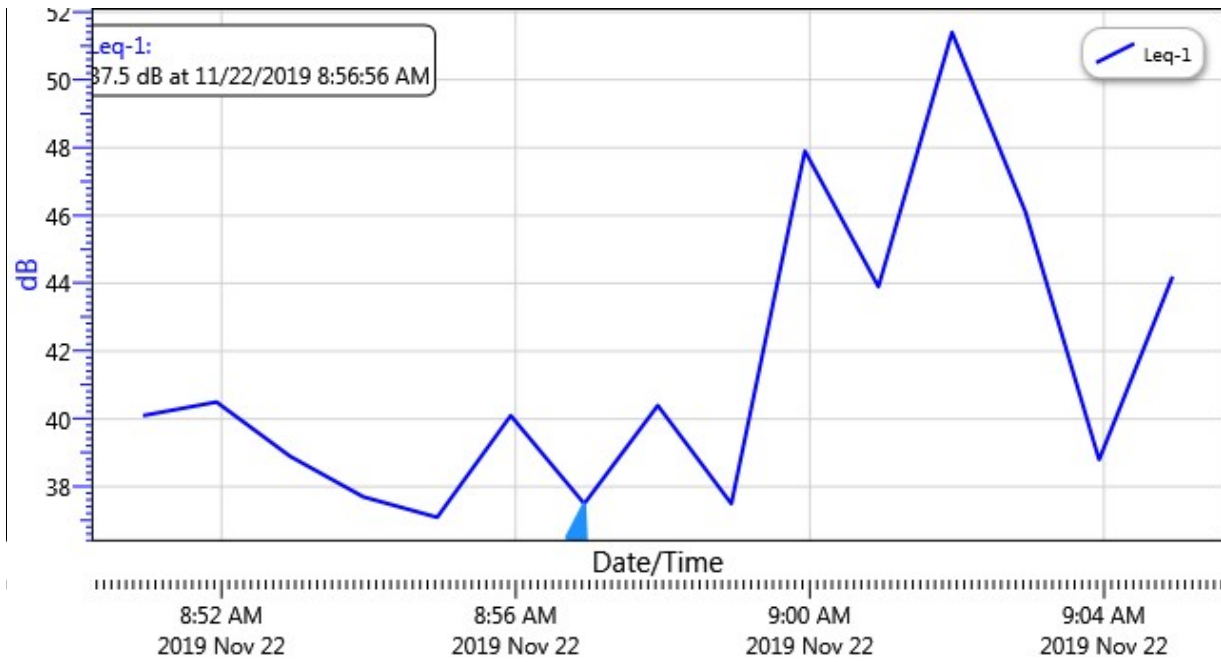
.	0%	1%	2%	3%	4%	5%	6%	%7	%8	%9
0%:		54.0	53.2	52.5	51.8	51.2	50.6	50.1	49.2	47.6
10%:	46.5	45.8	45.2	44.7	44.4	44.1	43.8	43.5	43.1	42.8
20%:	42.6	42.4	42.2	42.0	41.8	41.7	41.5	41.3	41.2	41.0
30%:	40.8	40.7	40.5	40.4	40.3	40.1	40.0	39.9	39.8	39.7
40%:	39.7	39.6	39.5	39.4	39.4	39.3	39.2	39.2	39.1	39.1
50%:	39.0	38.9	38.9	38.8	38.8	38.7	38.7	38.6	38.6	38.5
60%:	38.4	38.4	38.3	38.2	38.2	38.1	38.1	38.0	38.0	37.9



70%:	37.9	37.8	37.7	37.7	37.6	37.5	37.5	37.4	37.3	37.2
80%:	37.1	37.1	37.0	36.9	36.8	36.7	36.6	36.6	36.5	36.4
90%:	36.3	36.2	36.1	36.0	35.9	35.8	35.7	35.6	35.4	35.3
100%:	34.4									

Logged Data Chart

S096_BLH080004_25112019_142140: Logged Data Chart





Noise Measurement Report Form – Part A

Date: 11/22/2019 Day of Week: Friday Time: 9:47 am Project No. 7023

Monitoring Site ID: 2 Monitoring Site Address: 255 Spinks Canyon Rd

Measurement Taken By: Lisa Ahn, Victor Paitimusa of UltraSystems Environmental

Approximate Wind Speed: _____ mph [km/hr] Approximate Wind Direction: From the _____

Approximate distance of sound level meter from receptor location: 0 ft

Approximate distance of sound level meter from construction site: _____

(Leave Blank for Baseline Ambient)

Receptor Land Use (Check One): Residential Institutional Comm./Ind. Recreational

Sound Level Meter: Make and Model: Quest SoundPro DL-1-1/3 Serial Number: _____

Meter Setting: A-Weighted Sound Level (SLOW) A-Weighted Sound Level (FAST)

Measurement Start Time: 9:47 am Measurement End Time: 10:02 am

Total Measurement Time: 15 mins Session File Name (e.g., S012): 5097

Check the measurement purpose:

Baseline condition Ongoing construction Major change Complaint response

Measurement Results (dB):

Measurement Type	Measured Levels	Noise Criteria Threshold	Exceedance
CALIBRATION	Pre: <u>114</u> Post: _____	n/a	n/a
L _{eq} (h)	Slow: <u>52.2</u> Fast: _____		
L _{max}	Slow: <u>71.0</u> Fast: _____	n/a	n/a
L ₉₀	Slow: <u>38.9</u> Fast: _____	n/a	n/a

Field Notes:

- On a residential street
- There was a car honk @ 9:56.
- _____

Noise Monitor's Signature: [Signature] Date: 11/22/19

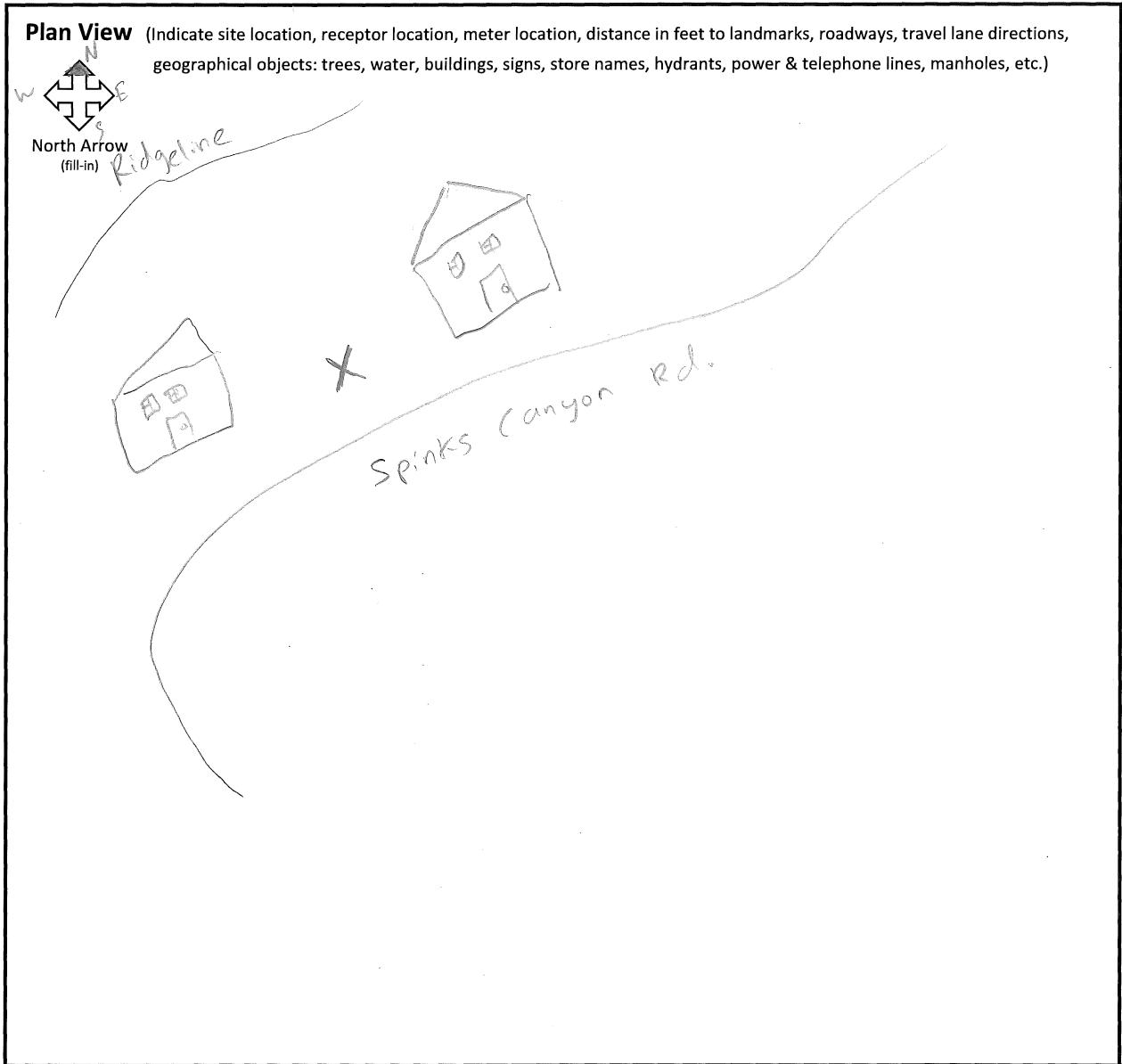


Noise Measurement Report Form – Part B

Date: 11/22/19 Day of Week: Fri Time: 9:47 am

Monitoring Site ID: 2 Monitoring Site Address: 255 Spinks Canyon Rd

Site Map



Elevation View (Indicate terrain, roadway, height and location of receptor, meter, walls, barriers, buildings, etc.)
Homes are on top of a ridge and has a valley with trees between the sensitive receptors and the Project Site.

Latitude: <u>34.15386</u>	Longitude: <u>117.95750°</u>	Elevation: <u>987</u>
---------------------------	------------------------------	-----------------------

Session Report

11/25/2019

Information Panel

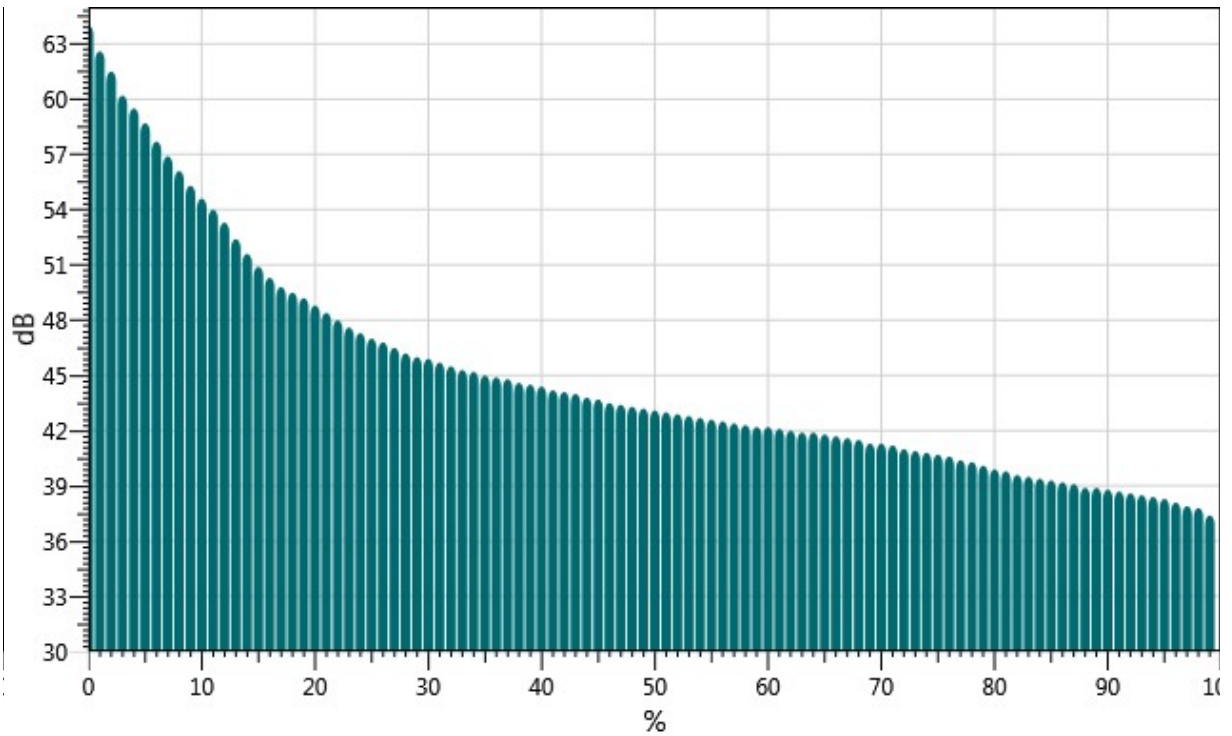
Name S097_BLH080004_25112019_142141
Start Time 11/22/2019 9:47:36 AM
Stop Time 11/22/2019 10:02:36 AM
Device Name BLH080004
Model Type SoundPro DL
Device Firmware Rev R.13H
Comments

Summary Data Panel

<u>Description</u>	<u>Meter</u>	<u>Value</u>	<u>Description</u>	<u>Meter</u>	<u>Value</u>
Leq	1	52.1 dB	L90	1	38.9 dB
Lmax	1	71 dB			
Exchange Rate	1	3 dB	Weighting	1	A
Response	1	SLOW	Bandwidth	1	OFF
Lmax	2	79.1 dB	Lmin	2	36.9 dB
Leq	2	52.1 dB			
Exchange Rate	2	3 dB	Weighting	2	A
Response	2	FAST			

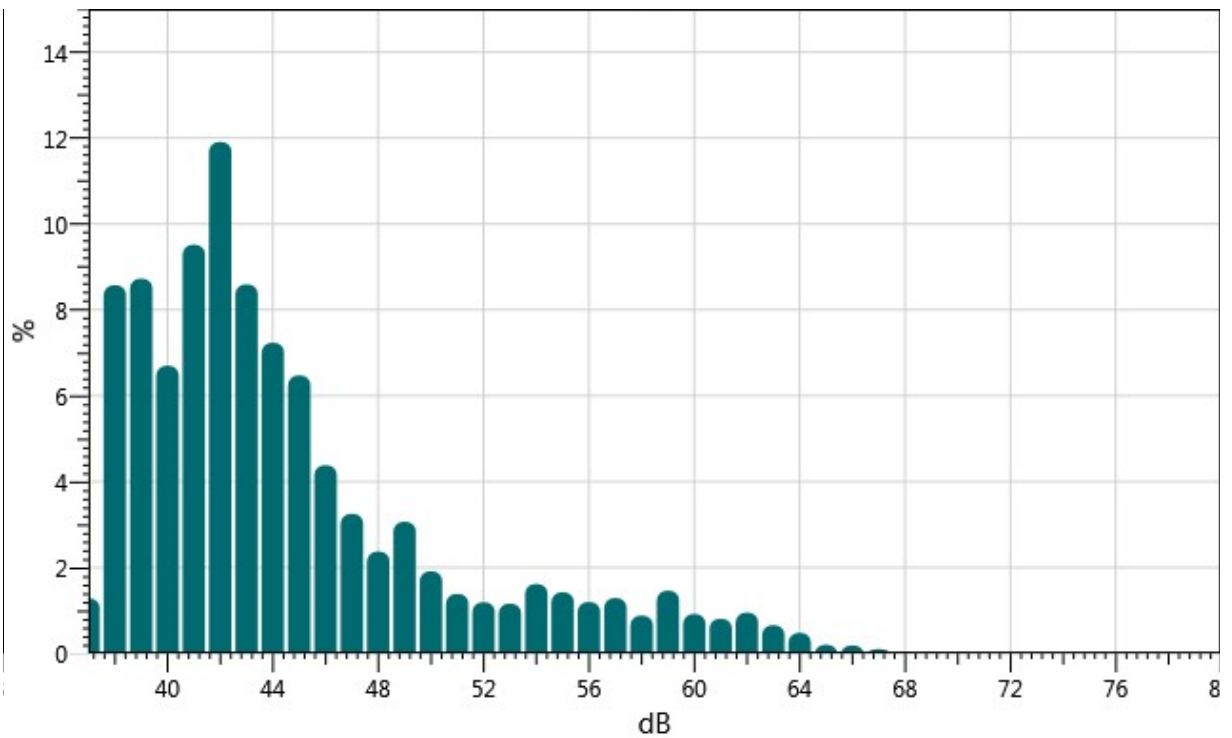
Exceedance Chart

S097_BLH080004_25112019_142141: Exceedance Chart



Statistics Chart

S097_BLH080004_25112019_142141: Statistics Chart



Statistics Table

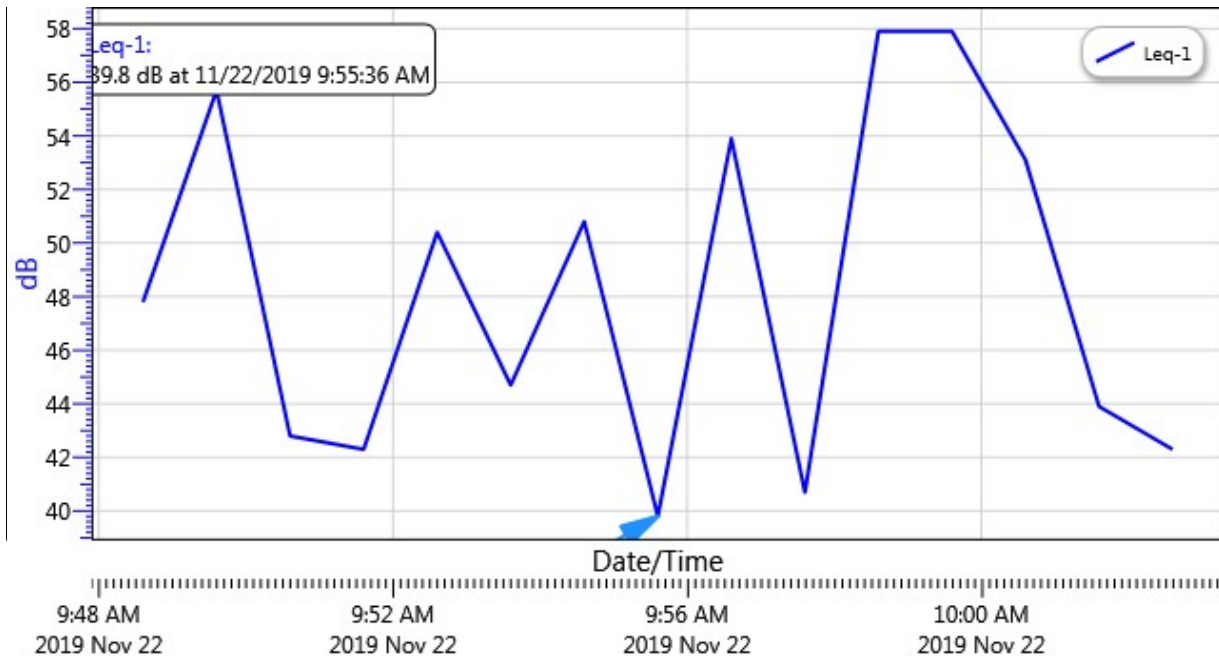
dB:	0.0	0.1	0.2	0.3	0.4	0.5	0.6	0.7	0.8	0.9	%
37:	0.00	0.00	0.00	0.00	0.00	0.02	0.14	0.40	0.34	0.39	1.28
38:	0.74	0.57	0.57	0.77	0.76	1.00	1.20	0.94	1.06	0.95	8.57
39:	1.20	0.75	0.92	1.07	0.88	0.92	0.89	0.83	0.66	0.59	8.73
40:	0.64	0.63	0.49	0.60	0.56	0.54	0.66	0.77	0.90	0.91	6.70
41:	0.88	0.88	0.95	0.96	1.09	0.90	0.90	0.86	1.09	1.01	9.51
42:	1.36	0.93	1.43	1.49	1.08	1.24	1.20	1.00	1.05	1.13	11.91
43:	1.26	0.83	0.84	0.99	0.80	0.79	0.86	0.81	0.70	0.71	8.59
44:	0.63	0.75	0.72	0.76	0.67	0.99	0.63	0.64	0.66	0.80	7.23
45:	0.78	0.75	0.62	0.72	0.70	0.56	0.65	0.56	0.59	0.55	6.47
46:	0.53	0.56	0.59	0.47	0.47	0.38	0.36	0.32	0.32	0.39	4.38
47:	0.41	0.36	0.36	0.32	0.32	0.29	0.29	0.34	0.26	0.31	3.25
48:	0.30	0.41	0.19	0.22	0.19	0.22	0.27	0.22	0.19	0.18	2.37
49:	0.17	0.32	0.29	0.24	0.34	0.29	0.39	0.44	0.28	0.31	3.07
50:	0.28	0.18	0.19	0.15	0.14	0.25	0.20	0.22	0.14	0.15	1.91
51:	0.12	0.23	0.11	0.17	0.13	0.11	0.14	0.14	0.12	0.13	1.39
52:	0.12	0.15	0.11	0.11	0.11	0.13	0.13	0.11	0.10	0.11	1.19
53:	0.10	0.10	0.10	0.10	0.12	0.15	0.12	0.13	0.12	0.12	1.16
54:	0.16	0.21	0.10	0.17	0.22	0.20	0.15	0.14	0.12	0.15	1.62
55:	0.15	0.14	0.16	0.20	0.14	0.15	0.14	0.13	0.11	0.09	1.43
56:	0.11	0.11	0.10	0.12	0.11	0.10	0.11	0.11	0.16	0.17	1.20
57:	0.13	0.15	0.09	0.13	0.12	0.10	0.10	0.16	0.13	0.18	1.29
58:	0.12	0.09	0.11	0.10	0.08	0.09	0.09	0.07	0.06	0.08	0.88
59:	0.10	0.10	0.13	0.18	0.17	0.14	0.15	0.13	0.13	0.23	1.46
60:	0.11	0.16	0.10	0.08	0.09	0.08	0.09	0.07	0.09	0.05	0.92
61:	0.05	0.09	0.07	0.07	0.08	0.07	0.08	0.09	0.11	0.11	0.81
62:	0.11	0.07	0.07	0.08	0.08	0.10	0.08	0.09	0.11	0.15	0.95
63:	0.14	0.13	0.06	0.05	0.04	0.04	0.03	0.04	0.08	0.05	0.66
64:	0.05	0.06	0.06	0.03	0.06	0.05	0.08	0.03	0.04	0.02	0.48
65:	0.02	0.03	0.02	0.02	0.02	0.02	0.02	0.02	0.02	0.02	0.20
66:	0.02	0.02	0.01	0.01	0.02	0.03	0.02	0.02	0.01	0.02	0.19
67:	0.04	0.01	0.02	0.01	0.00	0.00	0.00	0.00	0.00	0.00	0.10
68:	0.00	0.00	0.00	0.00	0.00	0.00	0.00	0.00	0.00	0.01	0.03
69:	0.00	0.00	0.00	0.00	0.00	0.00	0.00	0.00	0.00	0.00	0.03
70:	0.00	0.00	0.00	0.00	0.00	0.00	0.01	0.00	0.00	0.01	0.03
71:	0.00	0.00	0.00	0.00	0.00	0.00	0.00	0.00	0.00	0.00	0.00

Exceedance Table

	0%	1%	2%	3%	4%	5%	6%	7%	8%	9%
0%:		64.0	62.6	61.5	60.2	59.5	58.7	57.7	56.9	56.1
10%:	55.3	54.6	54.0	53.3	52.4	51.6	50.9	50.3	49.8	49.5
20%:	49.2	48.8	48.4	48.0	47.6	47.3	47.0	46.8	46.5	46.2
30%:	46.0	45.9	45.7	45.5	45.3	45.2	45.0	44.9	44.8	44.6
40%:	44.5	44.4	44.2	44.1	44.0	43.8	43.7	43.5	43.4	43.3
50%:	43.2	43.1	43.0	42.9	42.8	42.7	42.6	42.5	42.4	42.3
60%:	42.2	42.2	42.1	42.0	41.9	41.9	41.8	41.7	41.6	41.5
70%:	41.3	41.3	41.2	41.0	40.9	40.8	40.7	40.6	40.4	40.3
80%:	40.1	39.9	39.8	39.6	39.5	39.4	39.3	39.2	39.1	38.9
90%:	38.9	38.8	38.7	38.6	38.5	38.4	38.3	38.1	37.9	37.8
100%:	37.4									

Logged Data Chart

S097_BLH080004_25112019_142141: Logged Data Chart





Noise Measurement Report Form – Part A

Date: 11/22/19 Day of Week: Fri Time: 10:54 am Project No. 7023

Monitoring Site ID: 3 Monitoring Site Address: 255 Spinks Canyon Rd.

Measurement Taken By: Lisa Ahn/Victor Paitimusa of UltraSystems Environmental

Approximate Wind Speed: _____ mph [km/hr] Approximate Wind Direction: From the _____

Approximate distance of sound level meter from receptor location: _____

Approximate distance of sound level meter from construction site: _____

(Leave Blank for Baseline Ambient)

Receptor Land Use (Check One): Residential Institutional Comm./Ind. Recreational

Sound Level Meter: Make and Model: Quest SoundPro DL-1-1/3 Serial Number: _____

Meter Setting: A-Weighted Sound Level (SLOW) A-Weighted Sound Level (FAST)

Measurement Start Time: 10:54 am Measurement End Time: 11:09 am

Total Measurement Time: 15 mins Session File Name (e.g., S012): S098

Check the measurement purpose:

Baseline condition Ongoing construction Major change Complaint response

Measurement Results (dB):

Measurement Type	Measured Levels	Noise Criteria Threshold	Exceedance
CALIBRATION	Pre: <u>114</u> Post: _____	n/a	n/a
L _{eq} (h)	Slow: <u>41.0</u> Fast: _____		
L _{max}	Slow: <u>52.6</u> Fast: _____	n/a	n/a
L ₉₀	Slow: <u>36.6</u> Fast: _____	n/a	n/a

Field Notes:

- On small dirt road between homes and project site. Road is in small valley.
- Goat weed control project along small dirt road behind meter.
- _____

Noise Monitor's Signature: [Signature] Date: 11/22/19

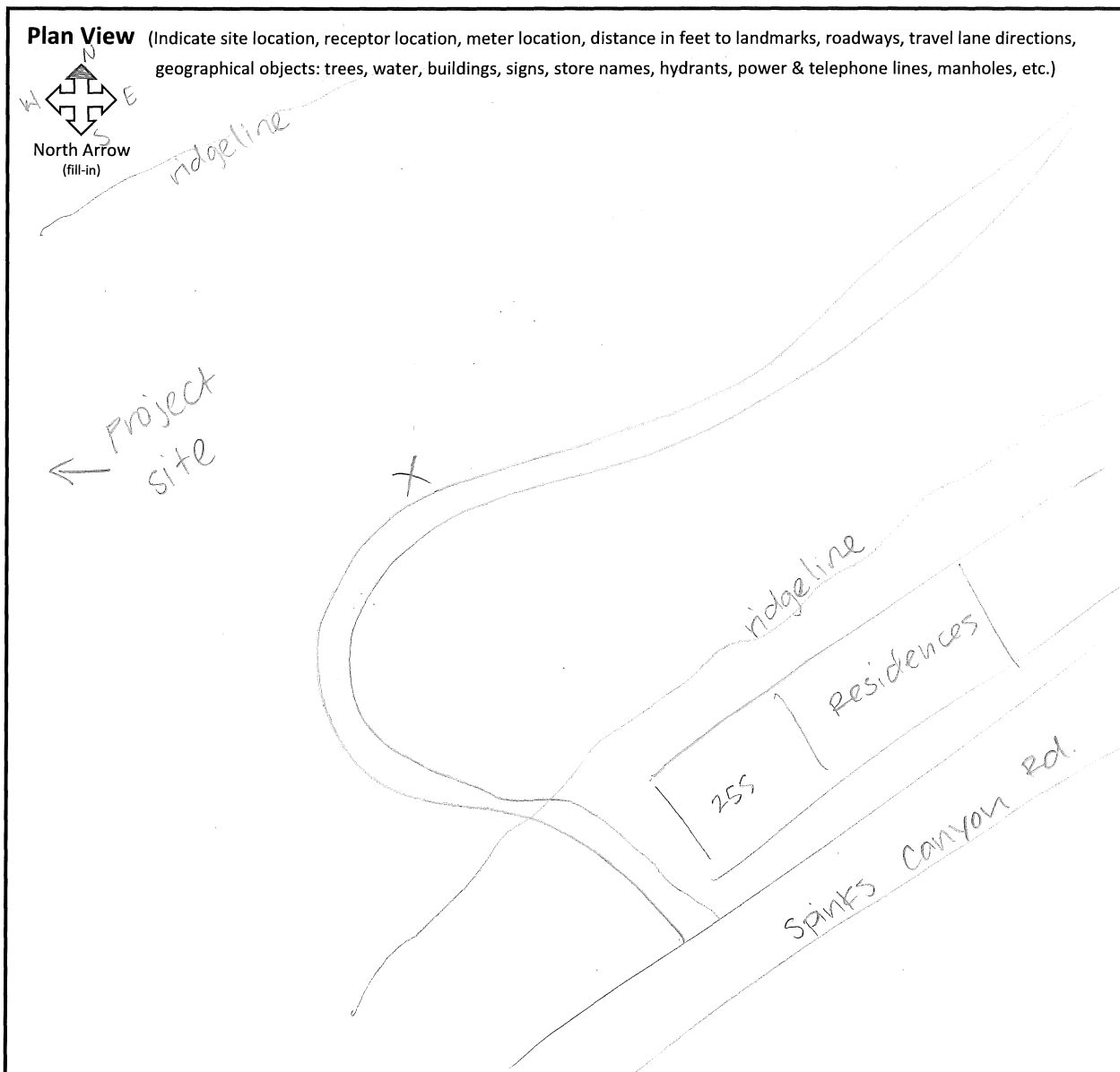


Noise Measurement Report Form – Part B

Date: 11/22/19 Day of Week: Fri Time: 10:54 am

Monitoring Site ID: 3 Monitoring Site Address: 255 Spinks Canyon Rd

Site Map



Elevation View (Indicate terrain, roadway, height and location of receptor, meter, walls, barriers, buildings, etc.)

Latitude: N 34.15493° Longitude: W 117.95857° Elevation: 13 ft

Session Report

11/25/2019

Information Panel

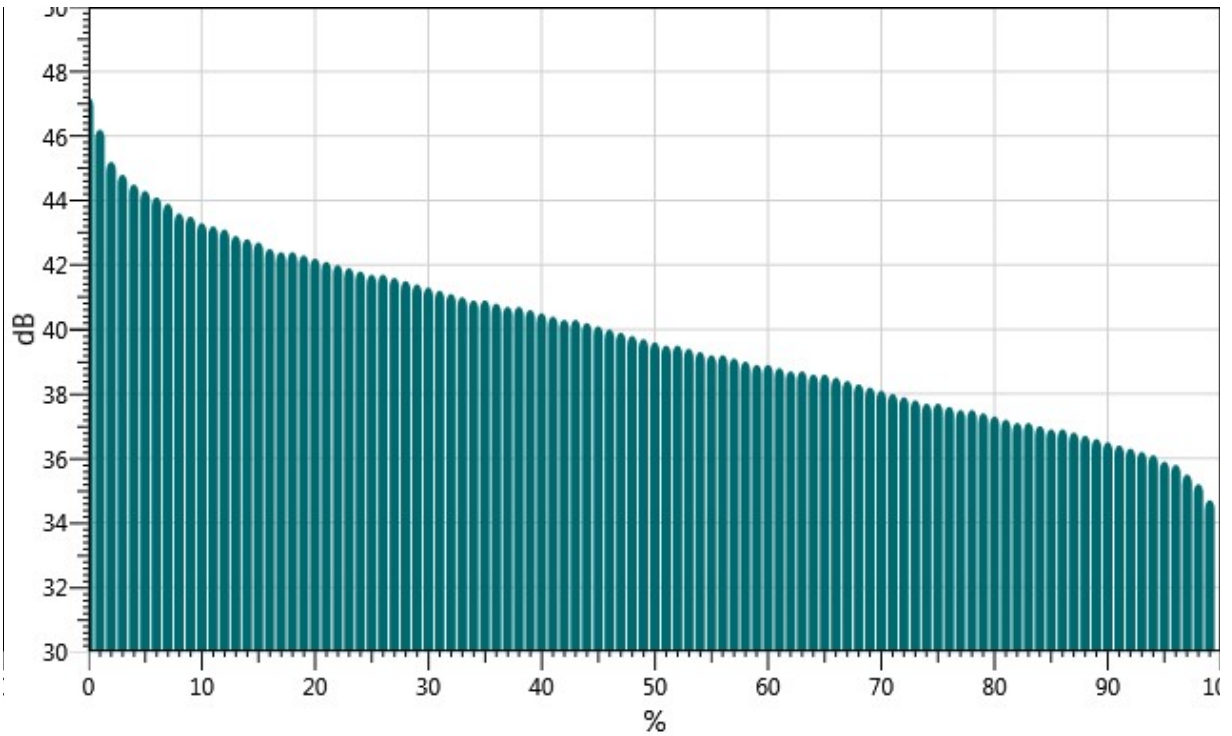
Name S098_BLH080004_25112019_142141
Start Time 11/22/2019 10:54:45 AM
Stop Time 11/22/2019 11:09:45 AM
Device Name BLH080004
Model Type SoundPro DL
Device Firmware Rev R.13H
Comments

Summary Data Panel

<u>Description</u>	<u>Meter</u>	<u>Value</u>	<u>Description</u>	<u>Meter</u>	<u>Value</u>
Leq	1	40.9 dB	L90	1	36.6 dB
Lmax	1	52.6 dB			
Exchange Rate	1	3 dB	Weighting	1	A
Response	1	SLOW	Bandwidth	1	OFF
Lmax	2	53.4 dB	Lmin	2	33.8 dB
Leq	2	40.8 dB			
Exchange Rate	2	3 dB	Weighting	2	A
Response	2	FAST			

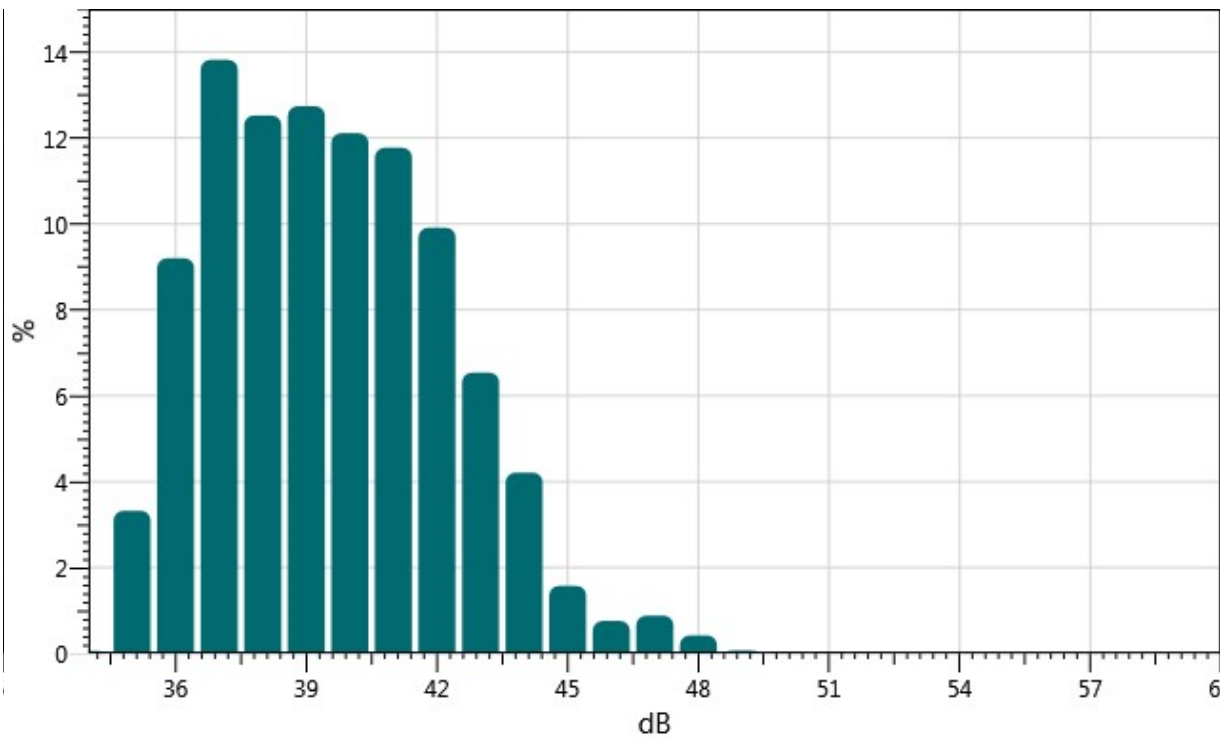
Exceedance Chart

S098_BLH080004_25112019_142141: Exceedance Chart



Statistics Chart

S098_BLH080004_25112019_142141: Statistics Chart



Statistics Table

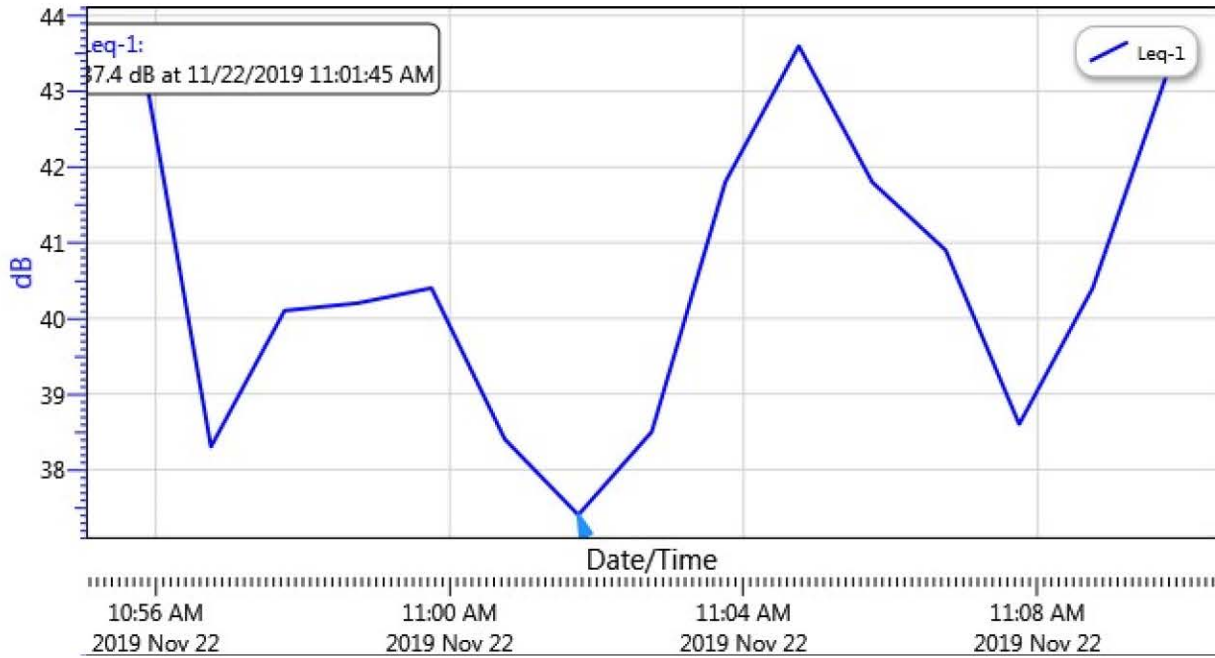
dB:	0.0	0.1	0.2	0.3	0.4	0.5	0.6	0.7	0.8	0.9	%
34:	0.00	0.00	0.00	0.00	0.00	0.00	0.00	0.00	0.01	0.05	0.06
35:	0.13	0.19	0.20	0.45	0.45	0.32	0.27	0.30	0.48	0.53	3.32
36:	0.72	0.41	0.77	0.87	1.14	0.97	0.97	1.14	1.03	1.18	9.20
37:	1.56	1.43	1.46	1.25	1.29	1.26	1.46	1.51	1.21	1.39	13.82
38:	1.19	1.07	1.14	1.05	0.88	0.90	1.15	1.71	1.60	1.83	12.52
39:	1.51	1.05	1.39	1.32	1.22	1.17	1.53	1.24	1.22	1.09	12.74
40:	1.29	0.96	0.89	0.95	1.29	1.46	1.29	1.19	1.30	1.49	12.11
41:	1.31	1.07	1.21	1.32	1.01	0.80	0.97	1.45	1.46	1.19	11.77
42:	1.31	1.07	0.98	1.05	0.99	1.10	0.99	0.86	0.83	0.72	9.91
43:	0.71	0.80	0.66	0.60	0.80	0.68	0.68	0.62	0.55	0.44	6.54
44:	0.42	0.42	0.51	0.51	0.41	0.41	0.45	0.42	0.38	0.28	4.21
45:	0.39	0.25	0.12	0.13	0.14	0.14	0.14	0.10	0.09	0.08	1.57
46:	0.08	0.06	0.08	0.09	0.07	0.08	0.09	0.08	0.06	0.08	0.76
47:	0.11	0.16	0.15	0.09	0.11	0.04	0.06	0.06	0.06	0.05	0.88
48:	0.04	0.05	0.03	0.08	0.09	0.06	0.03	0.02	0.01	0.01	0.42
49:	0.02	0.02	0.00	0.00	0.00	0.00	0.00	0.00	0.00	0.00	0.07
50:	0.00	0.00	0.00	0.00	0.00	0.00	0.00	0.00	0.00	0.00	0.03
51:	0.00	0.00	0.00	0.00	0.00	0.00	0.00	0.00	0.00	0.00	0.03
52:	0.00	0.00	0.00	0.00	0.00	0.00	0.00	0.00	0.00	0.00	0.02

Exceedance Table

.	0%	1%	2%	3%	4%	5%	6%	%7	%8	%9
0%:		47.2	46.2	45.2	44.8	44.5	44.3	44.1	43.9	43.6
10%:	43.5	43.3	43.2	43.1	42.9	42.8	42.7	42.5	42.4	42.4
20%:	42.3	42.2	42.1	42.0	41.9	41.8	41.7	41.7	41.6	41.5
30%:	41.4	41.3	41.2	41.1	41.0	40.9	40.9	40.8	40.7	40.7
40%:	40.6	40.5	40.4	40.3	40.3	40.2	40.1	40.0	39.9	39.8
50%:	39.7	39.6	39.5	39.5	39.4	39.3	39.2	39.2	39.1	39.0
60%:	38.9	38.9	38.8	38.7	38.7	38.6	38.6	38.5	38.4	38.3
70%:	38.2	38.1	38.0	37.9	37.8	37.7	37.7	37.6	37.5	37.5
80%:	37.4	37.3	37.2	37.1	37.1	37.0	36.9	36.9	36.8	36.7
90%:	36.6	36.5	36.4	36.3	36.2	36.1	35.9	35.8	35.5	35.2
100%:	34.7									

Logged Data Chart

S098_BLH080004_25112019_142141: Logged Data Chart





Noise Measurement Report Form – Part A

Date: 11/22/19 Day of Week: Fri Time: 12:55 pm Project No. 7023

Monitoring Site ID: 4 Monitoring Site Address: 172 Bliss Canyon Rd.

Measurement Taken By: Lisa Ann / Victor PaitimUSA of UltraSystems Environmental

Approximate Wind Speed: _____ mph [km/hr] Approximate Wind Direction: From the _____

Approximate distance of sound level meter from receptor location: 25 ft.

Approximate distance of sound level meter from construction site: _____
(Leave Blank for Baseline Ambient)

Receptor Land Use (Check One): Residential Institutional Comm./Ind. Recreational

Sound Level Meter: Make and Model: Quest SoundPro DL-1-1/3 Serial Number: _____

Meter Setting: A-Weighted Sound Level (SLOW) A-Weighted Sound Level (FAST)

Measurement Start Time: 12:57 pm Measurement End Time: 1:13 pm

Total Measurement Time: 15 mins Session File Name (e.g., S012): S099

Check the measurement purpose:

Baseline condition Ongoing construction Major change Complaint response

Measurement Results (dB):

Measurement Type	Measured Levels	Noise Criteria Threshold	Exceedance
CALIBRATION	Pre: <u>114</u> Post: _____	n/a	n/a
L _{eq} (h)	Slow: <u>56.0</u> Fast: _____		
L _{max}	Slow: <u>70.3</u> Fast: _____	n/a	n/a
L ₉₀	Slow: <u>43.8</u> Fast: _____	n/a	n/a

Field Notes:

- See Monitoring Site ID 1
- Public works maintenance - trucks, leaf blower ~100ft away
- crew talking ~ 50 ft away from meter.

Noise Monitor's Signature: [Signature] Date: 11/22/19



Noise Measurement Report Form – Part B

Date: 11/22/19 Day of Week: Fri Time: 12:55 pm

Monitoring Site ID: 4 Monitoring Site Address: 172 Bliss Canyon Rd

Site Map

Plan View (Indicate site location, receptor location, meter location, distance in feet to landmarks, roadways, travel lane directions, geographical objects: trees, water, buildings, signs, store names, hydrants, power & telephone lines, manholes, etc.)



North Arrow
(fill-in)

See Monitoring Site ID 1

Elevation View (Indicate terrain, roadway, height and location of receptor, meter, walls, barriers, buildings, etc.)

Latitude:

Longitude:

Elevation:

Session Report

11/25/2019

Information Panel

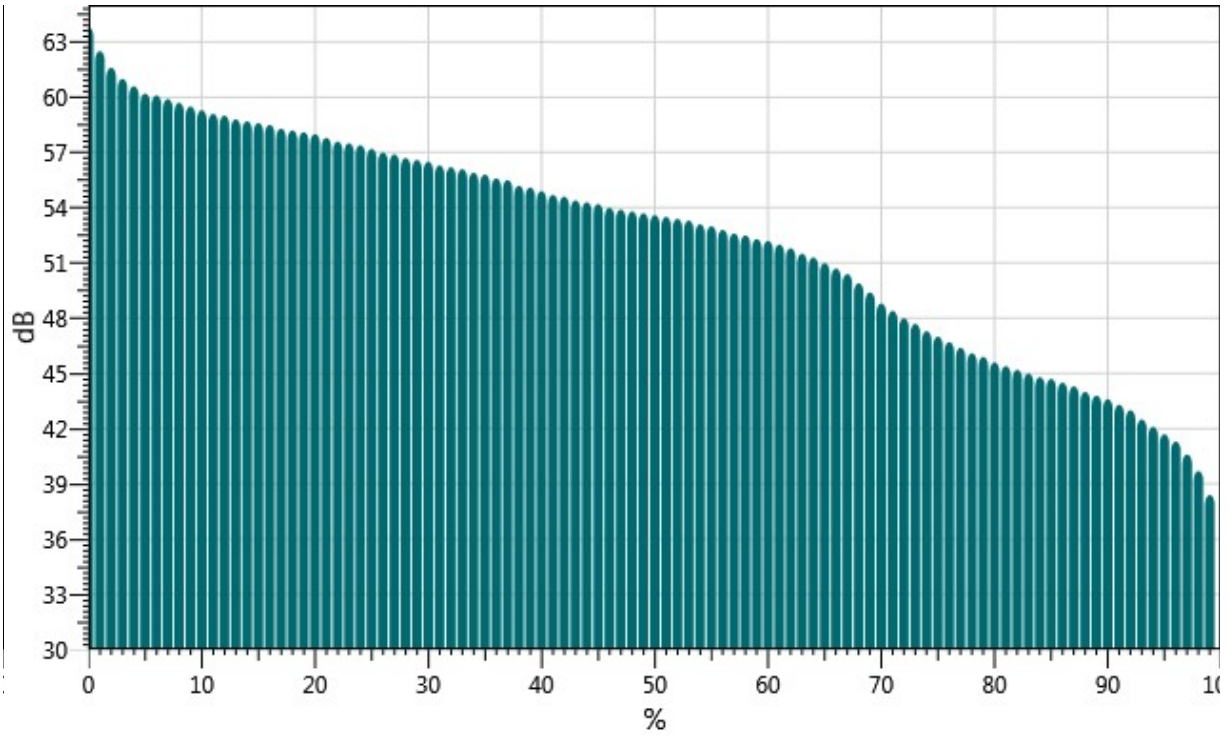
Name S099_BLH080004_25112019_142142
Start Time 11/22/2019 12:57:36 PM
Stop Time 11/22/2019 1:12:36 PM
Device Name BLH080004
Model Type SoundPro DL
Device Firmware Rev R.13H
Comments

Summary Data Panel

<u>Description</u>	<u>Meter</u>	<u>Value</u>	<u>Description</u>	<u>Meter</u>	<u>Value</u>
Leq	1	56 dB	L90	1	43.8 dB
Lmax	1	70.3 dB			
Exchange Rate	1	3 dB	Weighting	1	A
Response	1	SLOW	Bandwidth	1	OFF
Lmax	2	75.8 dB	Lmin	2	36 dB
Leq	2	55.9 dB			
Exchange Rate	2	3 dB	Weighting	2	A
Response	2	FAST			

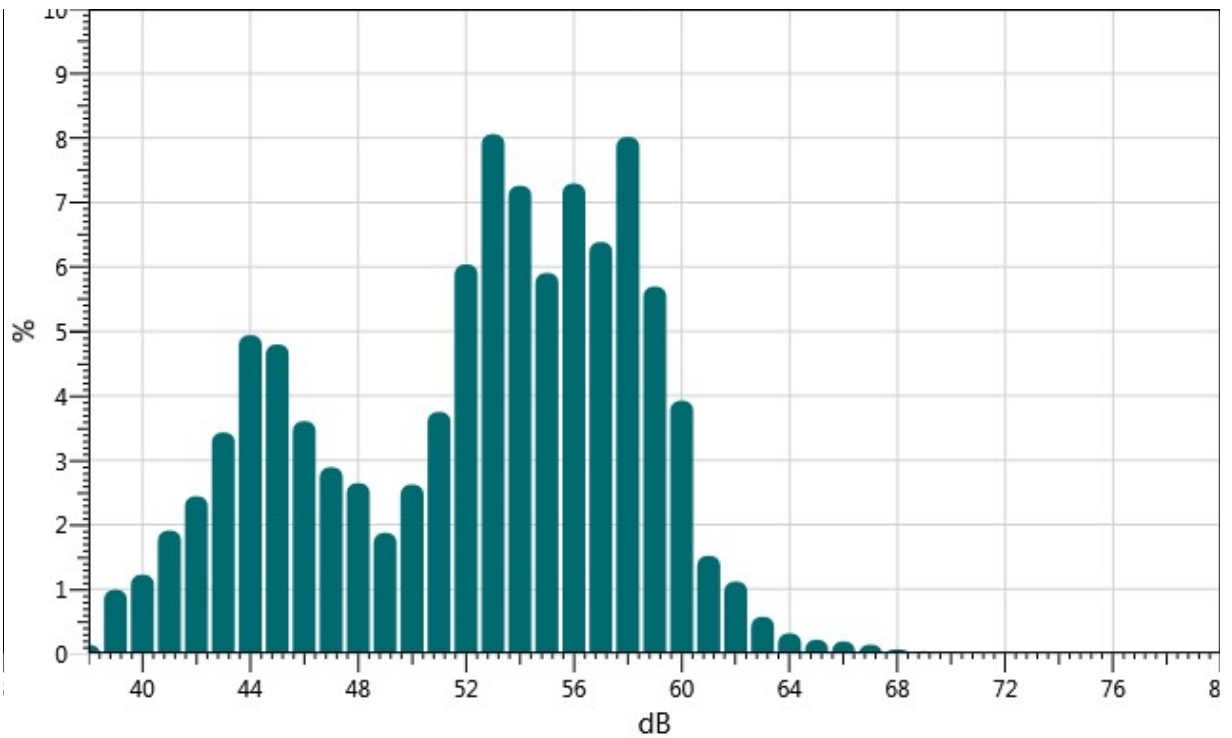
Exceedance Chart

S099_BLH080004_25112019_142142: Exceedance Chart



Statistics Chart

S099_BLH080004_25112019_142142: Statistics Chart



Statistics Table

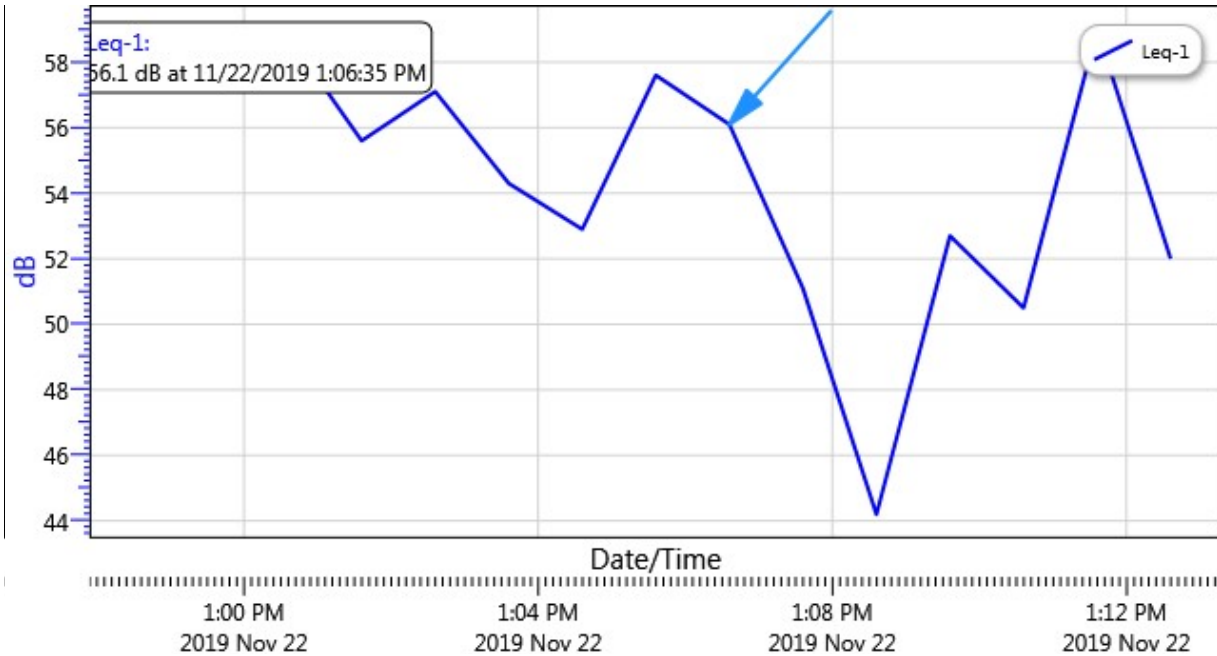
dB:	0.0	0.1	0.2	0.3	0.4	0.5	0.6	0.7	0.8	0.9	%
38:	0.00	0.00	0.00	0.00	0.00	0.00	0.04	0.03	0.04	0.02	0.13
39:	0.06	0.03	0.10	0.11	0.13	0.10	0.11	0.14	0.11	0.10	0.99
40:	0.13	0.18	0.12	0.14	0.10	0.10	0.09	0.12	0.13	0.14	1.22
41:	0.15	0.13	0.15	0.15	0.16	0.19	0.28	0.21	0.26	0.23	1.91
42:	0.32	0.30	0.18	0.22	0.24	0.22	0.28	0.20	0.19	0.27	2.44
43:	0.30	0.29	0.36	0.33	0.34	0.34	0.33	0.34	0.41	0.39	3.43
44:	0.43	0.51	0.44	0.44	0.42	0.54	0.50	0.55	0.56	0.55	4.94
45:	0.53	0.51	0.47	0.62	0.46	0.47	0.44	0.44	0.44	0.41	4.80
46:	0.47	0.37	0.36	0.40	0.38	0.31	0.33	0.34	0.35	0.31	3.61
47:	0.33	0.34	0.31	0.33	0.34	0.31	0.22	0.23	0.26	0.22	2.89
48:	0.30	0.35	0.29	0.31	0.30	0.28	0.23	0.24	0.15	0.20	2.64
49:	0.18	0.18	0.19	0.16	0.17	0.18	0.19	0.25	0.18	0.19	1.87
50:	0.18	0.20	0.20	0.23	0.29	0.25	0.25	0.32	0.35	0.36	2.62
51:	0.33	0.41	0.24	0.36	0.42	0.52	0.37	0.41	0.36	0.33	3.75
52:	0.34	0.62	0.73	0.59	0.69	0.57	0.62	0.59	0.72	0.57	6.04
53:	0.54	0.56	0.66	0.62	0.89	0.89	0.75	1.16	1.09	0.91	8.06
54:	0.84	1.06	0.60	0.74	0.71	0.79	0.74	0.69	0.53	0.55	7.26
55:	0.72	0.61	0.58	0.52	0.38	0.53	0.47	0.65	0.72	0.72	5.90
56:	0.73	0.72	0.71	0.86	0.61	0.63	0.69	0.85	0.77	0.74	7.29
57:	0.58	0.89	0.41	0.66	0.64	0.85	0.68	0.58	0.57	0.53	6.39
58:	0.72	0.75	0.79	0.89	0.75	0.89	0.77	0.88	0.80	0.78	8.02
59:	0.58	0.65	0.65	0.61	0.59	0.57	0.40	0.55	0.47	0.61	5.69
60:	0.53	0.53	0.40	0.64	0.33	0.31	0.32	0.32	0.31	0.22	3.92
61:	0.17	0.19	0.28	0.13	0.10	0.10	0.11	0.18	0.14	0.11	1.52
62:	0.11	0.11	0.11	0.11	0.11	0.11	0.18	0.10	0.08	0.10	1.12
63:	0.07	0.07	0.05	0.06	0.06	0.05	0.05	0.05	0.04	0.05	0.57
64:	0.06	0.05	0.03	0.03	0.03	0.03	0.02	0.02	0.02	0.02	0.31
65:	0.02	0.02	0.02	0.03	0.02	0.02	0.02	0.02	0.02	0.02	0.21
66:	0.02	0.02	0.02	0.02	0.02	0.02	0.02	0.02	0.02	0.01	0.19
67:	0.01	0.01	0.02	0.01	0.02	0.01	0.01	0.02	0.02	0.01	0.14
68:	0.01	0.01	0.01	0.02	0.00	0.00	0.00	0.00	0.00	0.00	0.07
69:	0.00	0.01	0.00	0.00	0.00	0.00	0.00	0.01	0.00	0.00	0.04
70:	0.01	0.00	0.01	0.01	0.00	0.00	0.00	0.00	0.00	0.00	0.02

Exceedance Table

	0%	1%	2%	3%	4%	5%	6%	7%	8%	9%
0%:		63.8	62.5	61.6	61.0	60.6	60.2	60.1	59.9	59.7
10%:	59.5	59.3	59.1	59.0	58.8	58.7	58.6	58.5	58.3	58.2
20%:	58.1	58.0	57.8	57.6	57.5	57.4	57.2	57.0	56.9	56.7
30%:	56.6	56.5	56.3	56.2	56.1	55.9	55.8	55.6	55.5	55.2
40%:	55.1	54.9	54.7	54.6	54.4	54.3	54.2	54.0	53.9	53.8
50%:	53.7	53.6	53.5	53.4	53.3	53.1	53.0	52.8	52.6	52.5
60%:	52.3	52.2	52.0	51.8	51.5	51.3	51.0	50.7	50.4	49.9
70%:	49.4	48.8	48.4	48.0	47.7	47.3	47.0	46.7	46.4	46.1
80%:	45.9	45.6	45.4	45.2	45.0	44.8	44.7	44.5	44.3	44.0
90%:	43.8	43.6	43.3	43.0	42.5	42.1	41.7	41.3	40.6	39.7
100%:	38.4									

Logged Data Chart

S099_BLH080004_25112019_142142: Logged Data Chart



Noise Measurement Report Form – Part A

Date: 11/22/19 Day of Week: Fri Time: _____ Project No. 7023

Monitoring Site ID: 5a Monitoring Site Address: 255 Spinks Canyon Rd.

Measurement Taken By: USA Ann/Victor Partimusca of UltraSystems Environmental

Approximate Wind Speed: _____ mph [km/hr] Approximate Wind Direction: From the _____

Approximate distance of sound level meter from receptor location: _____

Approximate distance of sound level meter from construction site: _____
(Leave Blank for Baseline Ambient)

Receptor Land Use (Check One): Residential Institutional Comm./Ind. Recreational

Sound Level Meter: Make and Model: Quest SoundPro DL-1-1/3 Serial Number: _____

Meter Setting: A-Weighted Sound Level (SLOW) A-Weighted Sound Level (FAST)

Measurement Start Time: 1:29 pm Measurement End Time: 1:44 pm

Total Measurement Time: 15 mins Session File Name (e.g., S012): S100

Check the measurement purpose:

Baseline condition Ongoing construction Major change Complaint response

Measurement Results (dB):

Measurement Type	Measured Levels	Noise Criteria Threshold	Exceedance
CALIBRATION	Pre: <u>114</u> Post: _____	n/a	n/a
L _{eq} (h)	Slow: <u>44.3</u> Fast: _____		
L _{max}	Slow: <u>61.9</u> Fast: _____	n/a	n/a
L ₉₀	Slow: <u>33.8</u> Fast: _____	n/a	n/a

Field Notes:

- See monitoring site ID 3
- 2nd reading (Sb) taken
- _____

Noise Monitor's Signature: [Signature] Date: 11/22/19



Noise Measurement Report Form – Part B

Date: 11/22/19 Day of Week: Fri Time: _____

Monitoring Site ID: 5 Monitoring Site Address: 255 Spinks Canyon Rd

Site Map

Plan View (Indicate site location, receptor location, meter location, distance in feet to landmarks, roadways, travel lane directions, geographical objects: trees, water, buildings, signs, store names, hydrants, power & telephone lines, manholes, etc.)



North Arrow
(fill-in)

See Monitoring site ID 3

Elevation View (Indicate terrain, roadway, height and location of receptor, meter, walls, barriers, buildings, etc.)

Latitude:

Longitude:

Elevation:

Session Report

11/25/2019

Information Panel

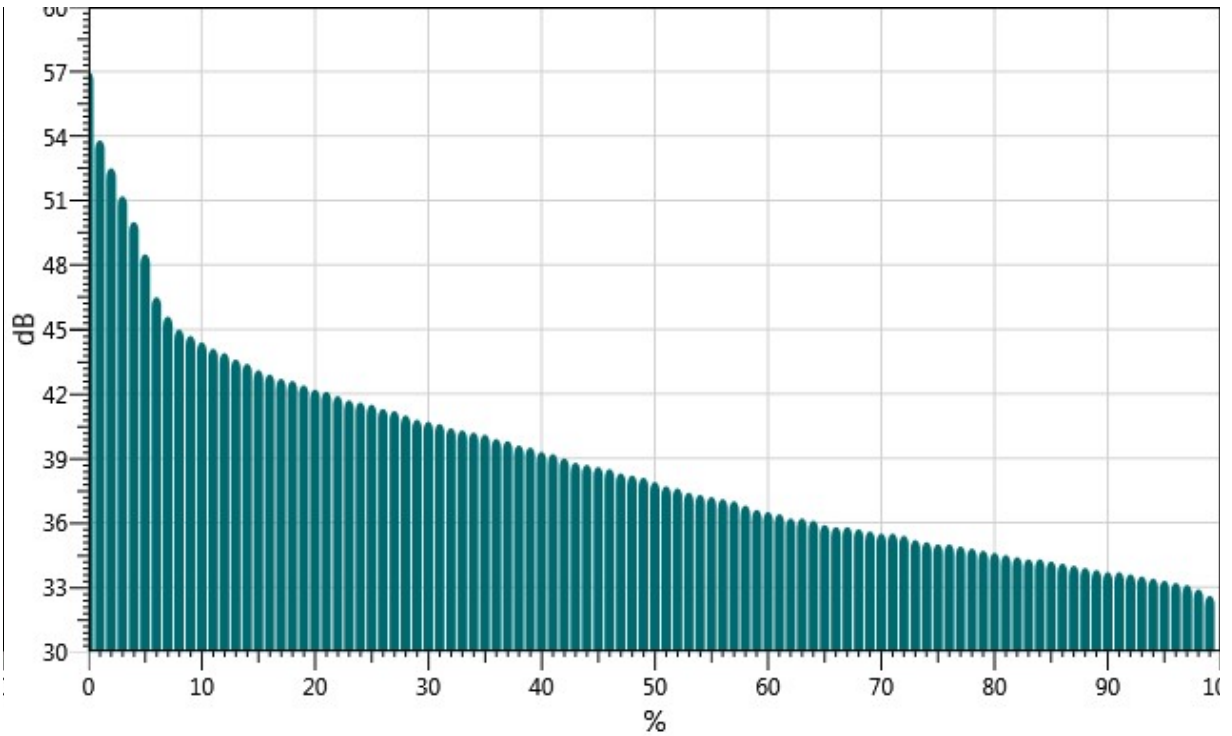
Name S100_BLH080004_25112019_142142
Start Time 11/22/2019 1:29:04 PM
Stop Time 11/22/2019 1:44:04 PM
Device Name BLH080004
Model Type SoundPro DL
Device Firmware Rev R.13H
Comments

Summary Data Panel

<u>Description</u>	<u>Meter</u>	<u>Value</u>	<u>Description</u>	<u>Meter</u>	<u>Value</u>
Leq	1	44.3 dB	L90	1	33.8 dB
Lmax	1	61.9 dB			
Exchange Rate	1	3 dB	Weighting	1	A
Response	1	SLOW	Bandwidth	1	OFF
Lmax	2	64.5 dB	Lmin	2	32.1 dB
Leq	2	44.2 dB			
Exchange Rate	2	3 dB	Weighting	2	A
Response	2	FAST			

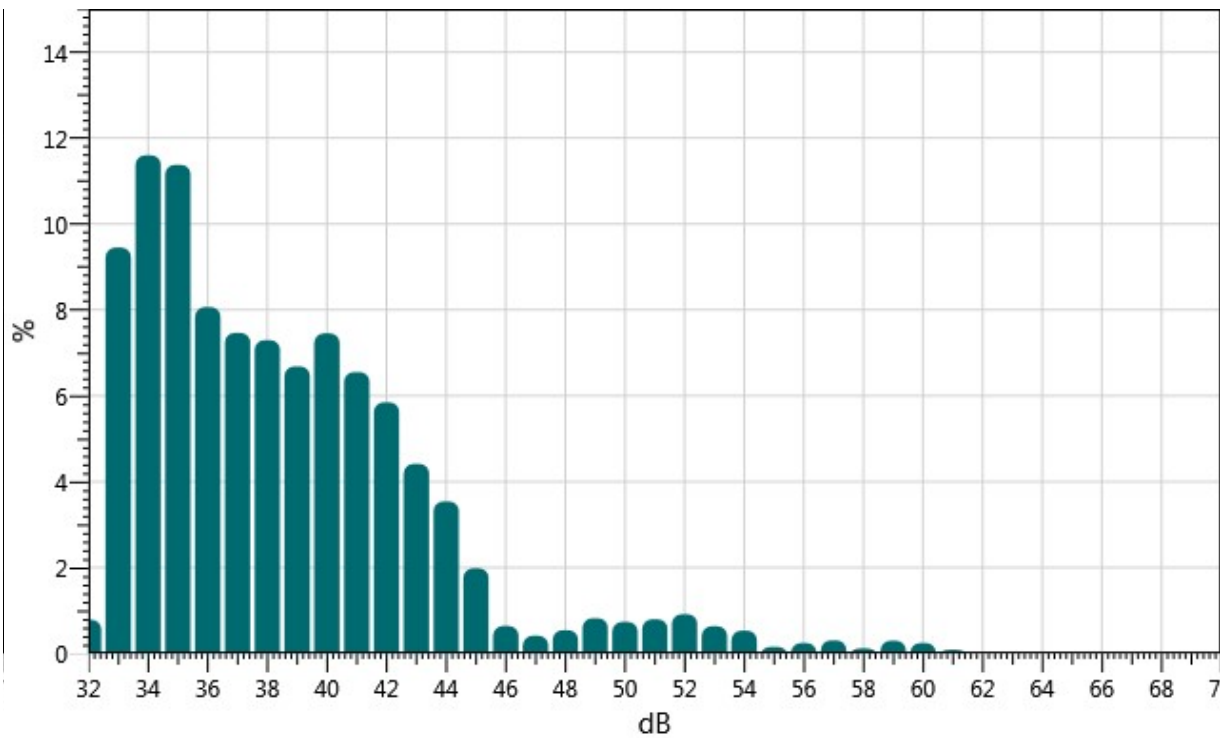
Exceedance Chart

S100_BLH080004_25112019_142142: Exceedance Chart



Statistics Chart

S100_BLH080004_25112019_142142: Statistics Chart



Statistics Table

dB:	0.0	0.1	0.2	0.3	0.4	0.5	0.6	0.7	0.8	0.9	%
32:	0.00	0.00	0.00	0.00	0.00	0.00	0.00	0.03	0.41	0.34	0.78
33:	0.76	0.32	0.84	0.70	0.77	0.90	1.50	1.33	1.19	1.14	9.45
34:	0.99	1.28	1.15	1.16	1.28	1.28	1.32	1.07	0.93	1.14	11.60
35:	1.10	1.31	1.09	0.92	0.68	1.04	1.36	1.46	1.16	1.25	11.38
36:	0.98	0.81	1.00	1.03	0.80	0.78	0.74	0.70	0.59	0.64	8.06
37:	0.61	0.89	1.05	0.92	0.84	0.73	0.59	0.68	0.61	0.55	7.46
38:	0.52	0.57	0.70	0.70	0.81	0.83	0.83	0.78	0.76	0.79	7.29
39:	0.68	0.41	0.52	0.72	0.78	0.73	0.68	0.77	0.66	0.74	6.68
40:	0.66	0.63	0.73	0.71	0.83	0.82	0.82	0.86	0.74	0.66	7.45
41:	0.60	0.55	0.65	0.61	0.61	0.75	0.57	0.76	0.80	0.65	6.55
42:	0.65	0.54	0.67	0.63	0.63	0.60	0.53	0.49	0.59	0.52	5.85
43:	0.48	0.50	0.49	0.53	0.42	0.42	0.38	0.45	0.38	0.36	4.41
44:	0.39	0.35	0.36	0.41	0.32	0.29	0.34	0.39	0.35	0.35	3.54
45:	0.37	0.23	0.19	0.17	0.17	0.19	0.16	0.18	0.14	0.19	1.98
46:	0.11	0.04	0.04	0.07	0.10	0.10	0.04	0.03	0.05	0.04	0.64
47:	0.04	0.03	0.03	0.03	0.07	0.04	0.03	0.03	0.03	0.07	0.41
48:	0.06	0.05	0.04	0.09	0.05	0.09	0.08	0.04	0.03	0.03	0.55
49:	0.04	0.07	0.05	0.12	0.10	0.08	0.15	0.07	0.08	0.08	0.82
50:	0.04	0.07	0.11	0.11	0.09	0.04	0.06	0.05	0.06	0.10	0.74
51:	0.13	0.09	0.06	0.09	0.05	0.04	0.08	0.08	0.08	0.10	0.80
52:	0.06	0.07	0.10	0.06	0.09	0.15	0.16	0.07	0.09	0.07	0.91
53:	0.07	0.10	0.09	0.11	0.05	0.05	0.03	0.03	0.04	0.07	0.64
54:	0.04	0.05	0.02	0.04	0.04	0.05	0.14	0.07	0.05	0.03	0.53
55:	0.03	0.02	0.02	0.02	0.01	0.01	0.01	0.02	0.01	0.01	0.16
56:	0.01	0.01	0.01	0.01	0.01	0.02	0.07	0.04	0.03	0.03	0.24
57:	0.04	0.04	0.01	0.03	0.03	0.02	0.03	0.04	0.03	0.03	0.31
58:	0.02	0.01	0.01	0.02	0.01	0.01	0.01	0.01	0.01	0.01	0.12
59:	0.01	0.01	0.01	0.01	0.01	0.05	0.07	0.05	0.03	0.06	0.30
60:	0.04	0.04	0.03	0.03	0.02	0.01	0.01	0.03	0.03	0.01	0.25
61:	0.02	0.01	0.01	0.01	0.01	0.01	0.01	0.01	0.01	0.01	0.09

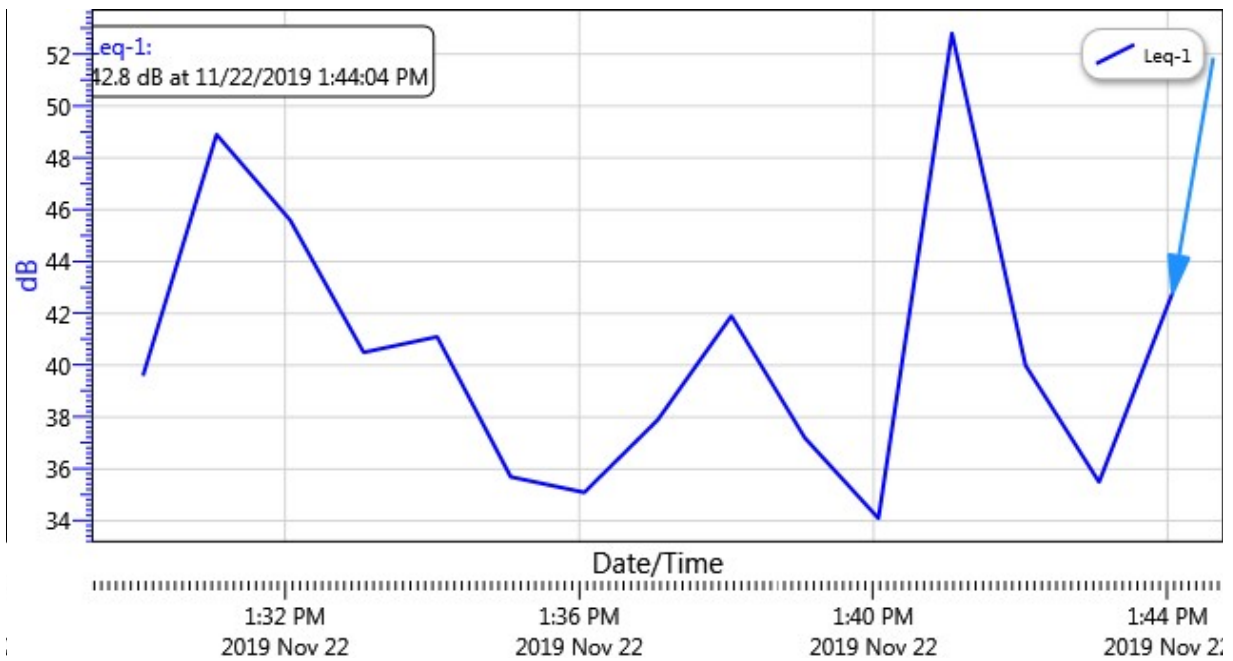
Exceedance Table

.	0%	1%	2%	3%	4%	5%	6%	%7	%8	%9
0%:		57.0	53.8	52.5	51.2	50.0	48.5	46.5	45.6	45.0

10%:	44.7	44.4	44.1	43.9	43.6	43.4	43.1	42.9	42.7	42.6
20%:	42.4	42.2	42.1	41.9	41.7	41.6	41.5	41.3	41.2	41.0
30%:	40.8	40.7	40.6	40.4	40.3	40.2	40.1	39.9	39.8	39.6
40%:	39.5	39.3	39.2	39.0	38.8	38.7	38.6	38.5	38.3	38.2
50%:	38.1	37.9	37.7	37.6	37.4	37.3	37.2	37.1	37.0	36.8
60%:	36.6	36.5	36.4	36.2	36.2	36.1	35.9	35.8	35.8	35.7
70%:	35.6	35.5	35.5	35.4	35.2	35.1	35.0	35.0	34.9	34.8
80%:	34.7	34.6	34.5	34.4	34.3	34.3	34.2	34.1	34.0	33.9
90%:	33.8	33.7	33.7	33.6	33.5	33.4	33.3	33.2	33.1	32.9
100%:	32.6									

Logged Data Chart

S100_BLH080004_25112019_142142: Logged Data Chart





Noise Measurement Report Form – Part A

Date: 11/22/19 Day of Week: Fri Time: 1:51pm Project No. 7023

Monitoring Site ID: 5b Monitoring Site Address: 255 Spinks Canyon Rd

Measurement Taken By: Lisa Ahn, Victor Paitimusa of UltraSystems Environmental

Approximate Wind Speed: _____ mph [km/hr] Approximate Wind Direction: From the _____

Approximate distance of sound level meter from receptor location: _____

Approximate distance of sound level meter from construction site: _____

(Leave Blank for Baseline Ambient)

Receptor Land Use (Check One): Residential Institutional Comm./Ind. Recreational

Sound Level Meter: Make and Model: Quest SoundPro DL-1-1/3 Serial Number: _____

Meter Setting: A-Weighted Sound Level (SLOW) A-Weighted Sound Level (FAST)

Measurement Start Time: 1:51pm Measurement End Time: 2:06pm

Total Measurement Time: 15 mins Session File Name (e.g., S012): S101

Check the measurement purpose:

Baseline condition Ongoing construction Major change Complaint response

Measurement Results (dB):

Measurement Type	Measured Levels	Noise Criteria Threshold	Exceedance
CALIBRATION	Pre: <u>114</u> Post: _____	n/a	n/a
L _{eq} (h)	Slow: <u>39.1</u> Fast: _____		
L _{max}	Slow: <u>55.7</u> Fast: _____	n/a	n/a
L ₉₀	Slow: <u>34.1</u> Fast: _____	n/a	n/a

Field Notes:

- See Monitoring Site ID 3
- Taken in case 5a was accidentally deleted.
- _____

Noise Monitor's Signature: [Signature] Date: 11/22/19



Noise Measurement Report Form – Part B

Date: 11/22/19 Day of Week: Fri Time: _____

Monitoring Site ID: 5b Monitoring Site Address: 255 Spinks Canyon Rd

Site Map

Plan View (Indicate site location, receptor location, meter location, distance in feet to landmarks, roadways, travel lane directions, geographical objects: trees, water, buildings, signs, store names, hydrants, power & telephone lines, manholes, etc.)



North Arrow
(fill-in)

See Monitoring Site ID 3

Elevation View (Indicate terrain, roadway, height and location of receptor, meter, walls, barriers, buildings, etc.)

Latitude:

Longitude:

Elevation:

Session Report

11/25/2019

Information Panel

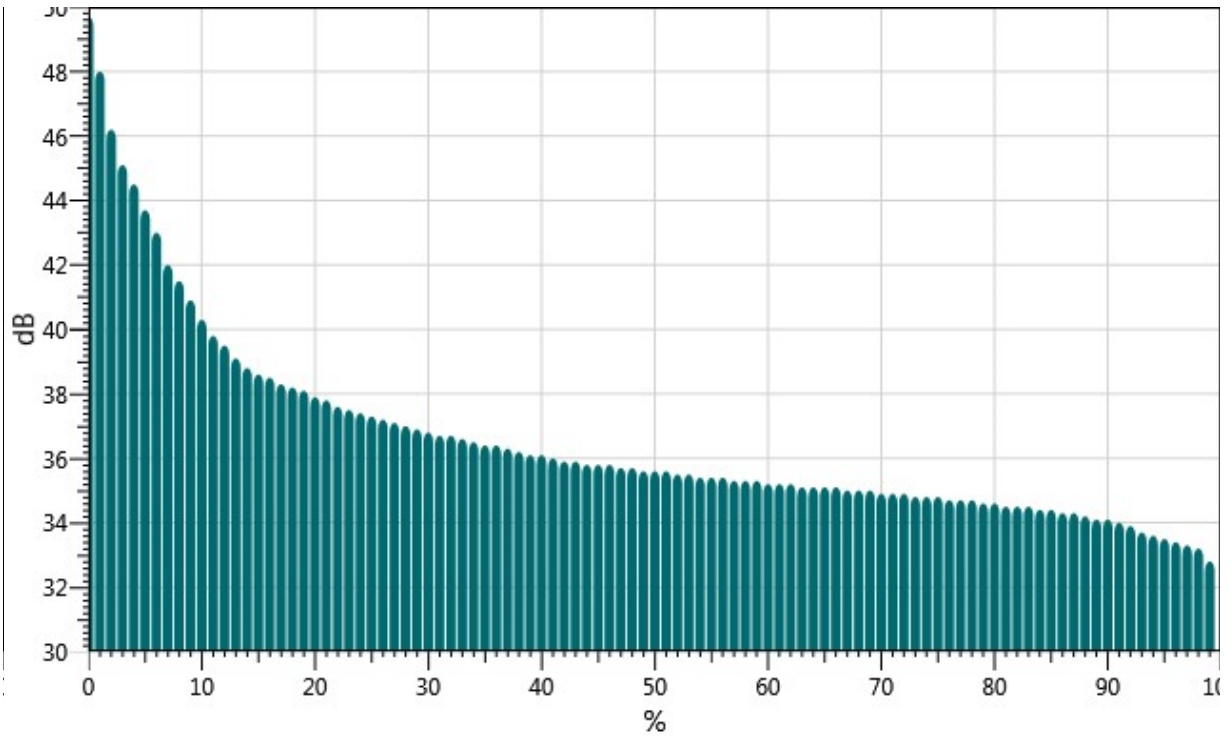
Name S101_BLH080004_25112019_142143
Start Time 11/22/2019 1:51:58 PM
Stop Time 11/22/2019 2:06:58 PM
Device Name BLH080004
Model Type SoundPro DL
Device Firmware Rev R.13H
Comments

Summary Data Panel

<u>Description</u>	<u>Meter</u>	<u>Value</u>	<u>Description</u>	<u>Meter</u>	<u>Value</u>
Leq	1	39.1 dB	L90	1	34.1 dB
Lmax	1	55.7 dB			
Exchange Rate	1	3 dB	Weighting	1	A
Response	1	SLOW	Bandwidth	1	OFF
Lmax	2	59.4 dB	Lmin	2	32.2 dB
Leq	2	38.8 dB			
Exchange Rate	2	3 dB	Weighting	2	A
Response	2	FAST			

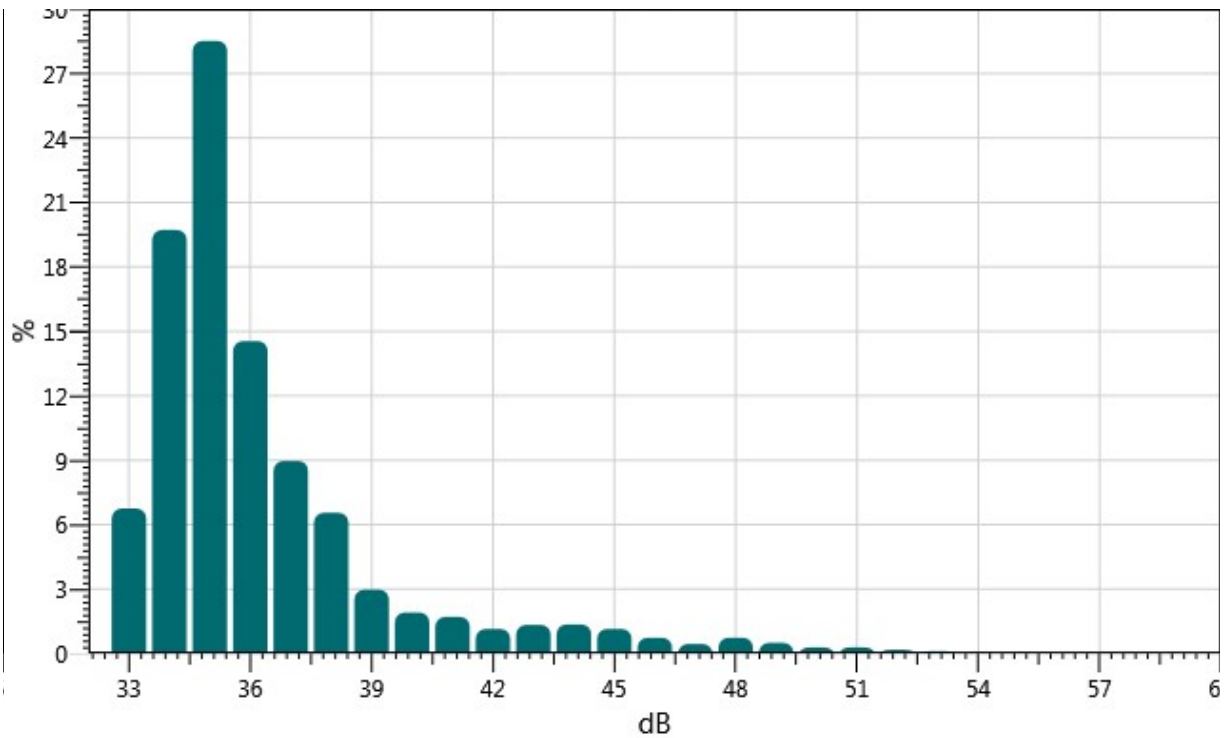
Exceedance Chart

S101_BLH080004_25112019_142143: Exceedance Chart



Statistics Chart

S101_BLH080004_25112019_142143: Statistics Chart



Statistics Table

dB:	0.0	0.1	0.2	0.3	0.4	0.5	0.6	0.7	0.8	0.9	%
32:	0.00	0.00	0.00	0.00	0.00	0.00	0.00	0.00	0.00	0.06	0.06
33:	0.14	0.13	0.41	0.53	0.87	0.98	1.17	0.83	0.91	0.79	6.75
34:	0.84	1.00	1.39	1.65	1.77	2.22	2.85	2.40	2.77	2.83	19.72
35:	3.34	3.06	3.26	2.86	3.18	2.87	2.80	2.47	2.25	2.43	28.52
36:	2.44	1.42	1.62	1.31	1.11	1.10	1.13	1.46	1.64	1.31	14.54
37:	1.17	1.11	0.98	0.91	0.75	0.88	0.80	0.83	0.73	0.80	8.97
38:	0.68	0.73	0.78	0.82	0.74	0.70	0.61	0.54	0.51	0.45	6.55
39:	0.49	0.23	0.31	0.27	0.27	0.32	0.28	0.27	0.27	0.26	2.97
40:	0.25	0.26	0.23	0.17	0.16	0.16	0.21	0.16	0.15	0.15	1.91
41:	0.16	0.14	0.13	0.15	0.17	0.19	0.18	0.21	0.16	0.22	1.70
42:	0.17	0.18	0.13	0.16	0.15	0.07	0.06	0.06	0.08	0.09	1.15
43:	0.12	0.19	0.14	0.17	0.15	0.14	0.13	0.12	0.08	0.10	1.33
44:	0.11	0.11	0.13	0.19	0.09	0.12	0.13	0.16	0.13	0.19	1.36
45:	0.18	0.19	0.12	0.14	0.11	0.11	0.08	0.07	0.06	0.08	1.14
46:	0.07	0.07	0.10	0.10	0.11	0.07	0.07	0.05	0.05	0.04	0.74
47:	0.05	0.04	0.05	0.04	0.03	0.03	0.05	0.05	0.06	0.05	0.45
48:	0.11	0.11	0.06	0.10	0.07	0.05	0.07	0.06	0.05	0.06	0.73
49:	0.06	0.06	0.05	0.06	0.05	0.04	0.06	0.05	0.05	0.04	0.50
50:	0.03	0.03	0.02	0.02	0.02	0.03	0.04	0.03	0.03	0.03	0.28
51:	0.05	0.05	0.04	0.04	0.02	0.02	0.01	0.03	0.02	0.02	0.29
52:	0.01	0.03	0.02	0.01	0.01	0.01	0.03	0.02	0.01	0.01	0.17
53:	0.03	0.02	0.01	0.02	0.03	0.00	0.00	0.00	0.00	0.00	0.11
54:	0.00	0.00	0.00	0.00	0.00	0.00	0.00	0.00	0.00	0.00	0.03
55:	0.00	0.00	0.00	0.00	0.00	0.00	0.00	0.00	0.00	0.00	0.02

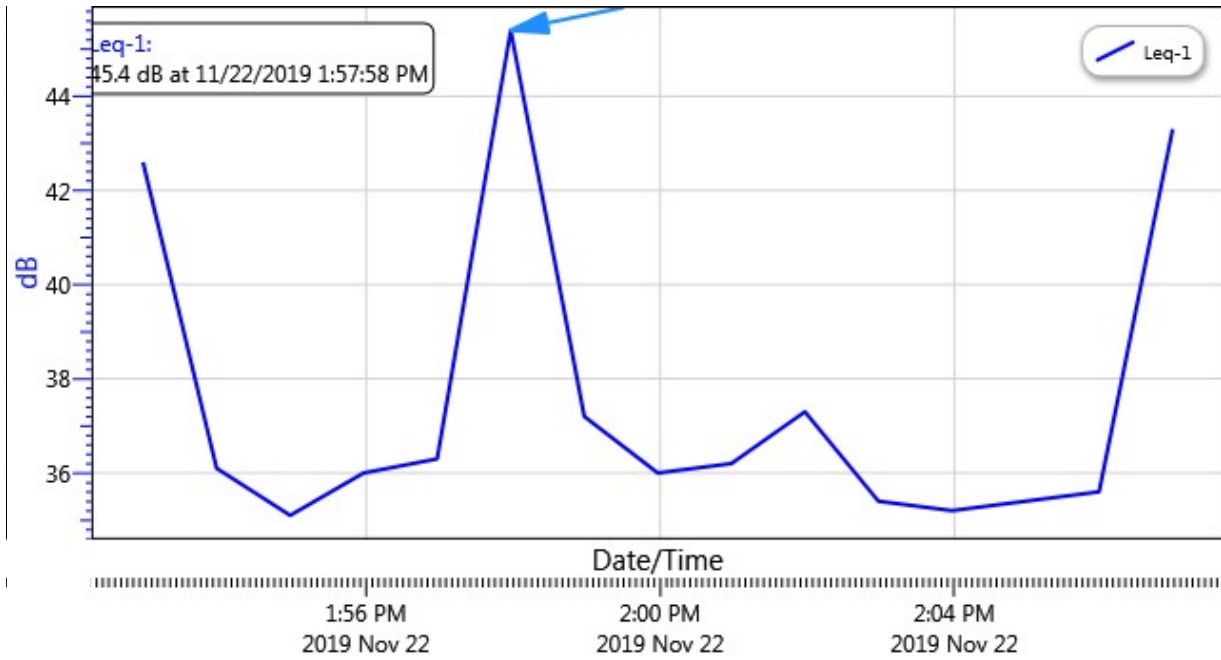
Exceedance Table

.	0%	1%	2%	3%	4%	5%	6%	%7	%8	%9
0%:		49.7	48.0	46.2	45.1	44.5	43.7	43.0	42.0	41.5
10%:	40.9	40.3	39.8	39.5	39.1	38.8	38.6	38.5	38.3	38.2
20%:	38.1	37.9	37.8	37.6	37.5	37.4	37.3	37.2	37.1	37.0
30%:	36.9	36.8	36.7	36.7	36.6	36.5	36.4	36.4	36.3	36.2
40%:	36.1	36.1	36.0	35.9	35.9	35.8	35.8	35.8	35.7	35.7
50%:	35.6	35.6	35.6	35.5	35.5	35.4	35.4	35.4	35.3	35.3
60%:	35.3	35.2	35.2	35.2	35.1	35.1	35.1	35.1	35.0	35.0

70%:	35.0	34.9	34.9	34.9	34.8	34.8	34.8	34.7	34.7	34.7
80%:	34.6	34.6	34.5	34.5	34.5	34.4	34.4	34.3	34.3	34.2
90%:	34.1	34.1	34.0	33.9	33.7	33.6	33.5	33.4	33.3	33.2
100%:	32.8									

Logged Data Chart

S101_BLH080004_25112019_142143: Logged Data Chart





Noise Measurement Report Form – Part A

Date: 11/22/19 Day of Week: Fri Time: 2:40pm Project No. 7023

Monitoring Site ID: 6 Monitoring Site Address: 255 Spinks Canyon Rd.

Measurement Taken By: Lisa Ann/Victor Partim USA of UltraSystems Environmental

Approximate Wind Speed: _____ mph [km/hr] Approximate Wind Direction: From the _____

Approximate distance of sound level meter from receptor location: 0 ft

Approximate distance of sound level meter from construction site: _____
(Leave Blank for Baseline Ambient)

Receptor Land Use (Check One): Residential Institutional Comm./Ind. Recreational

Sound Level Meter: Make and Model: Quest SoundPro DL-1-1/3 Serial Number: _____

Meter Setting: A-Weighted Sound Level (SLOW) A-Weighted Sound Level (FAST)

Measurement Start Time: 2:40 pm Measurement End Time: 2:55 pm

Total Measurement Time: 15 mins Session File Name (e.g., S012): S102

Check the measurement purpose:

Baseline condition Ongoing construction Major change Complaint response

Measurement Results (dB):

Measurement Type	Measured Levels	Noise Criteria Threshold	Exceedance
CALIBRATION	Pre: <u>114</u> Post: _____	n/a	n/a
L _{eq} (h)	Slow: <u>49.2</u> Fast: _____		
L _{max}	Slow: <u>65.4</u> Fast: _____	n/a	n/a
L ₉₀	Slow: <u>37.9</u> Fast: _____	n/a	n/a

Field Notes:

- see Monitoring site ID 2
- Goats ~30ft away from water
- _____

Noise Monitor's Signature: [Signature] Date: 11/22/19



Noise Measurement Report Form – Part B

Date: 11/22/19 Day of Week: Fri Time: 2:40 pm

Monitoring Site ID: 6 Monitoring Site Address: 255 SPINKS CANYON Rd

Site Map

Plan View (Indicate site location, receptor location, meter location, distance in feet to landmarks, roadways, travel lane directions, geographical objects: trees, water, buildings, signs, store names, hydrants, power & telephone lines, manholes, etc.)



North Arrow
(fill-in)

See Monitoring Site ID 2

Elevation View (Indicate terrain, roadway, height and location of receptor, meter, walls, barriers, buildings, etc.)

Latitude:

Longitude:

Elevation:

Session Report

11/25/2019

Information Panel

Name S102_BLH080004_25112019_142143
Start Time 11/22/2019 2:40:31 PM
Stop Time 11/22/2019 2:55:31 PM
Device Name BLH080004
Model Type SoundPro DL
Device Firmware Rev R.13H
Comments

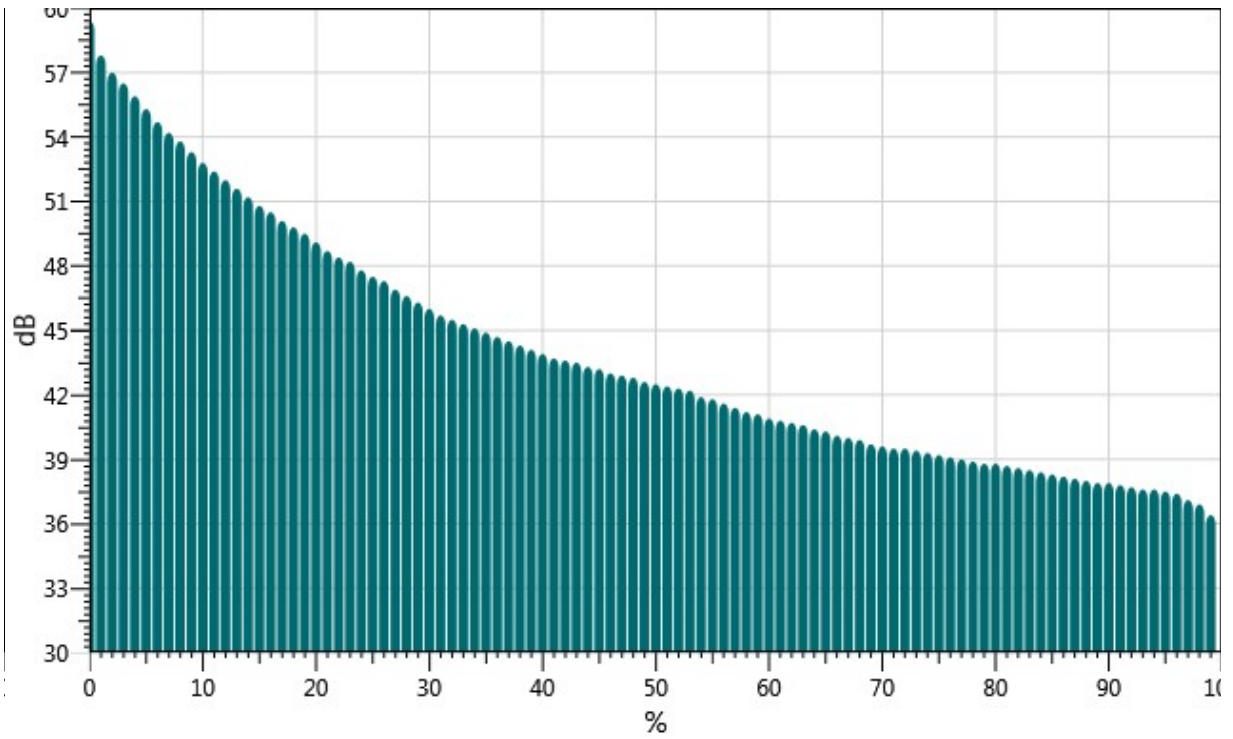
Summary Data Panel

<u>Description</u>	<u>Meter</u>	<u>Value</u>	<u>Description</u>	<u>Meter</u>	<u>Value</u>
Leq	1	49.2 dB	Dose	1	26 %
Dose8	1	833.1 %	Exp Hrs	1	0 Pa ² -Hours
Exp Sec	1	0 Pa ² -Sec	L90	1	37.9 dB
Lmax	1	65.4 dB	Lmin	1	36.5 dB
Lpk	1	86.8 dB	Mntime	1	11/22/2019 2:40:53 PM
Mxtime	1	11/22/2019 2:47:05 PM	OL%	1	0 %
Pdose (8:00)	1	833.1 %	PKtime	1	11/22/2019 2:40:34 PM
ProjectedTWA (8:00)	1	49.2 dB	Rtime	1	00:15:00
SEL	1	78.7 dB	TWA	1	34.1 dB
UL Time	1	00:00:00	UR%	1	0 %
Exchange Rate	1	3 dB	Weighting	1	A
Response	1	SLOW	Bandwidth	1	OFF
Dose	2	25.6 %	Dose8	2	820.8 %
Exp Hrs	2	0 Pa ² -Hours	Exp Sec	2	0 Pa ² -Sec
Leq	2	49.1 dB	Lmax	2	67.7 dB
Lmin	2	35.7 dB	Lpk	2	86.7 dB
Mntime	2	11/22/2019 2:40:53 PM	Mxtime	2	11/22/2019 2:47:05 PM
OL%	2	0 %	Pdose (8:00)	2	820.8 %
PKtime	2	11/22/2019 2:40:34 PM	ProjectedTWA (8:00)	2	49.1 dB
Rtime	2	00:15:00	SEL	2	78.6 dB

TWA	2	34 dB	UL Time	2	00:00:00
UR%	2	0 %			
Exchange Rate	2	3 dB	Weighting	2	A
Response	2	FAST			

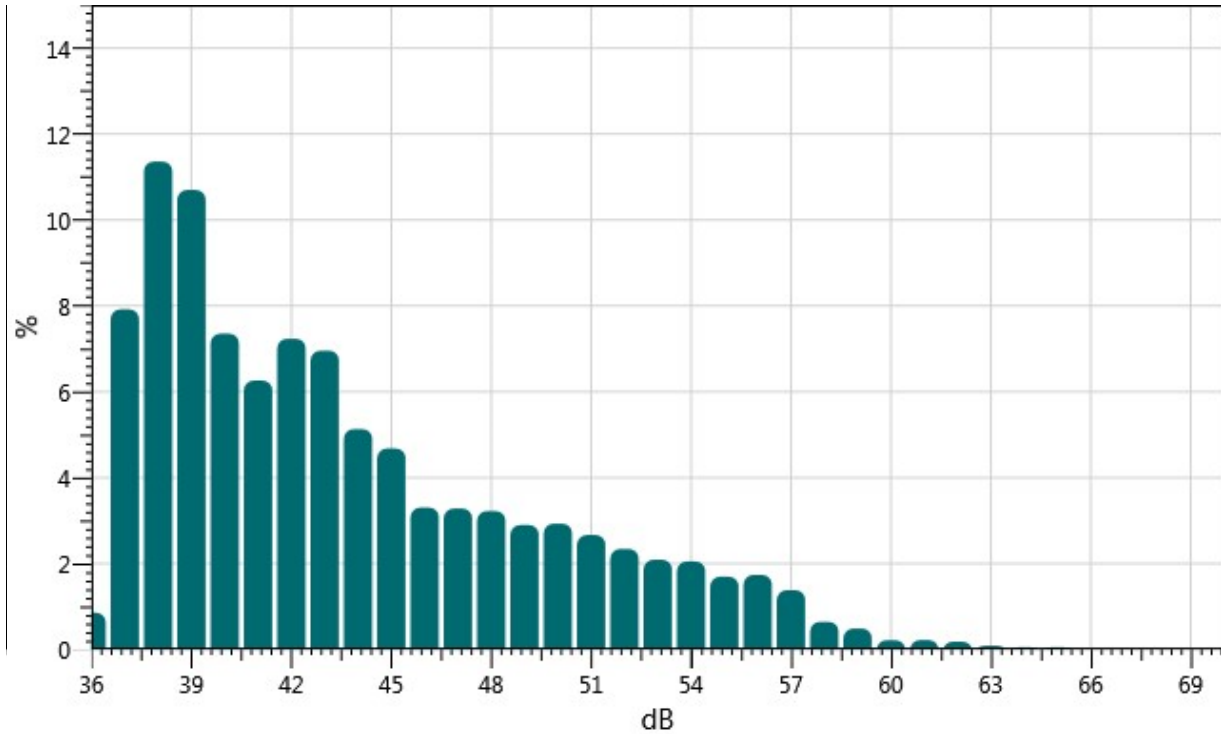
Exceedance Chart

S102_BLH080004_25112019_142143: Exceedance Chart



Statistics Chart

S102_BLH080004_25112019_142143: Statistics Chart



Statistics Table

dB:	0.0	0.1	0.2	0.3	0.4	0.5	0.6	0.7	0.8	0.9	%
36:	0.00	0.00	0.00	0.00	0.00	0.02	0.11	0.16	0.17	0.40	0.86
37:	0.41	0.54	0.34	0.33	0.48	0.90	0.99	1.33	1.29	1.32	7.92
38:	1.30	1.18	0.97	1.03	1.21	1.07	1.24	0.96	1.06	1.36	11.36
39:	1.11	0.85	1.06	1.31	1.27	1.18	1.18	0.94	0.98	0.83	10.70
40:	0.83	0.78	0.85	0.67	0.57	0.63	0.55	0.62	0.85	1.00	7.35
41:	0.91	0.76	0.78	0.63	0.52	0.46	0.47	0.56	0.62	0.55	6.26
42:	0.58	0.45	0.50	0.64	1.00	0.91	0.75	0.84	0.75	0.82	7.23
43:	0.81	0.76	0.61	0.55	0.67	0.69	0.77	0.74	0.76	0.60	6.96
44:	0.55	0.53	0.50	0.43	0.50	0.52	0.49	0.44	0.49	0.68	5.13
45:	0.69	0.48	0.45	0.44	0.52	0.46	0.42	0.40	0.44	0.38	4.68
46:	0.36	0.32	0.37	0.34	0.35	0.42	0.35	0.26	0.29	0.26	3.30
47:	0.27	0.28	0.31	0.35	0.36	0.40	0.34	0.33	0.33	0.30	3.28
48:	0.30	0.42	0.25	0.35	0.38	0.37	0.30	0.33	0.30	0.23	3.22
49:	0.25	0.28	0.25	0.28	0.26	0.29	0.30	0.35	0.34	0.30	2.90
50:	0.26	0.35	0.30	0.34	0.29	0.26	0.26	0.27	0.26	0.34	2.93
51:	0.33	0.35	0.18	0.24	0.24	0.23	0.24	0.28	0.30	0.27	2.67

52:	0.24	0.22	0.25	0.22	0.23	0.21	0.24	0.24	0.26	0.24	2.34
53:	0.21	0.19	0.18	0.20	0.18	0.20	0.19	0.22	0.27	0.26	2.09
54:	0.23	0.24	0.16	0.20	0.20	0.21	0.23	0.20	0.19	0.19	2.05
55:	0.18	0.16	0.18	0.18	0.19	0.16	0.18	0.16	0.15	0.16	1.69
56:	0.17	0.18	0.16	0.17	0.14	0.17	0.18	0.18	0.19	0.20	1.74
57:	0.20	0.24	0.13	0.17	0.13	0.10	0.11	0.09	0.10	0.11	1.38
58:	0.06	0.07	0.06	0.06	0.07	0.06	0.07	0.07	0.06	0.06	0.65
59:	0.07	0.06	0.06	0.05	0.06	0.06	0.04	0.05	0.02	0.03	0.49
60:	0.02	0.03	0.02	0.02	0.02	0.02	0.02	0.02	0.02	0.03	0.22
61:	0.04	0.02	0.02	0.02	0.02	0.02	0.02	0.02	0.02	0.02	0.22
62:	0.03	0.03	0.01	0.02	0.02	0.02	0.02	0.02	0.01	0.01	0.18
63:	0.02	0.02	0.01	0.01	0.01	0.01	0.01	0.01	0.01	0.01	0.09
64:	0.01	0.01	0.01	0.01	0.01	0.01	0.01	0.01	0.01	0.01	0.06
65:	0.01	0.01	0.01	0.01	0.02	0.00	0.00	0.00	0.00	0.00	0.06

Exceedance Table

.	0%	1%	2%	3%	4%	5%	6%	%7	%8	%9
0%:		59.4	57.8	57.0	56.5	55.9	55.3	54.7	54.2	53.8
10%:	53.3	52.8	52.4	52.0	51.6	51.2	50.8	50.5	50.1	49.8
20%:	49.5	49.1	48.7	48.4	48.2	47.8	47.5	47.3	46.9	46.6
30%:	46.3	46.0	45.7	45.5	45.3	45.1	44.9	44.7	44.5	44.3
40%:	44.1	43.9	43.7	43.6	43.5	43.3	43.2	43.0	42.9	42.8
50%:	42.6	42.5	42.4	42.3	42.2	41.9	41.8	41.6	41.4	41.2
60%:	41.1	40.9	40.8	40.7	40.6	40.4	40.3	40.1	40.0	39.9
70%:	39.7	39.6	39.5	39.5	39.4	39.3	39.2	39.1	39.0	38.9
80%:	38.8	38.8	38.7	38.6	38.5	38.4	38.3	38.2	38.1	38.0
90%:	37.9	37.9	37.8	37.7	37.6	37.6	37.5	37.4	37.1	36.9
100%:	36.4									



Logged Data Chart

S102_BLH080004_25112019_142143: Logged Data Chart

