

State Center Community College District
REQUEST FOR PRELIMINARY COMMENT
First Responders Campus Project

To:

Responsible, Trustee and Interested Agencies
Interested Persons

From:

State Center Community College District
George Cummings
District Director of Facilities Planning
1171 Fulton Street
Fresno, CA 93721
Telephone: (559) 243-7191
Email: george.cummings@scccd.edu

Date: March 5, 2020

Purpose: State Center Community College District (SCCCD) is proposing to undertake the First Responders Campus Project (project). The purpose of this Request for Preliminary Comment is to invite responsible, trustee and interested agencies, as well as interested persons, to submit written comments on any concerns they may have on the environmental effects of the project. The District will consider the comments in preparing a California Environmental Quality Act Initial Study for the project and in determining whether to prepare an Environmental Impact Report for the project or to adopt a Negative Declaration or Mitigated Negative Declaration. You will have the opportunity to comment again after you have reviewed the completed environmental documents.

Comments: Please send any comments in response to this Request for Preliminary Comment to George Cummings at the contact information provided above. **The deadline for submission of comments is Tuesday, March 31, 2020.**

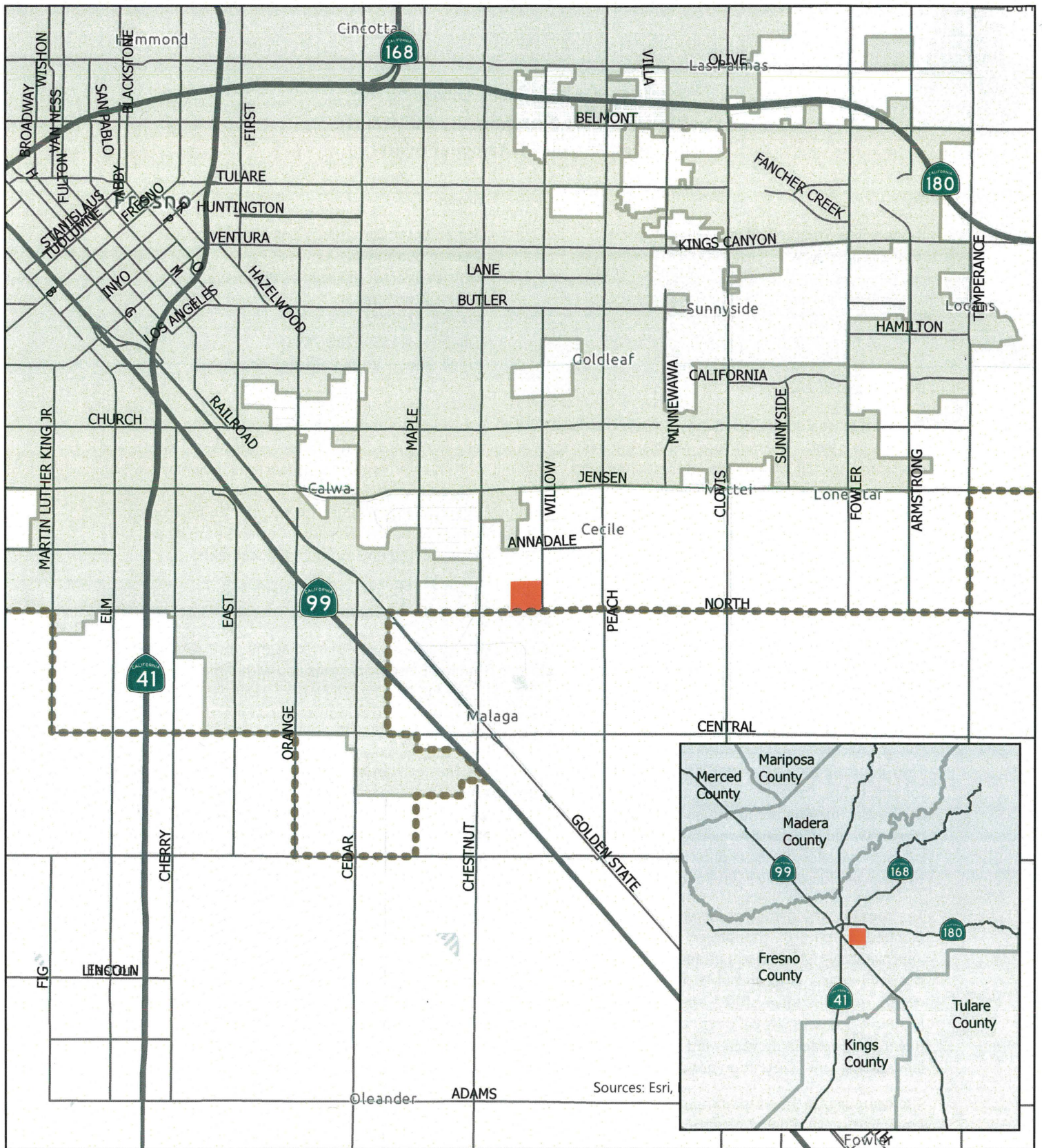
Project Location and Description: The project is located on a 39.21-acre parcel situated at the northwest corner of North and Willow Avenues, approximately one-quarter mile from the Fresno city limits and within the City of Fresno Sphere of Influence. The site contains vacant land previously used for farming plus a farmstead site located at the southwest portion of the property. The project site is neighbored by a mixture of industrial, commercial, agricultural, and rural residential land uses. (See Figures 1 and 2 for additional detail)

The First Responders Campus is envisioned in SCCC's Facilities Master Plan as combining instruction and training for police, fire, corrections, EMT and paramedic programs at a single specialized campus. Currently, these programs are housed at separate locations throughout the District in facilities of varying age. Development of the proposed project would relocate these programs onto a single campus and into permanent modern facilities. Additionally, the project may allow for local public agencies to utilize the facilities at the campus for trainings and exercises related to the provision of police, fire, and emergency medical services.

The campus would encompass approximately 20 acres on the western portion of the 39.21-acre parcel. Facilities planned as part of the project include approximately 61,600 square feet of academic building space and approximately 116,300 square feet of space for specialized site facilities. The academic buildings would house the District's Police, Fire, and EMS programs and include facilities such as classrooms, breakout rooms, conference rooms, administrative offices, restrooms, lounges, locker rooms, and storage space. The specialized site facilities include a scenario village, physical training areas, a grinder pad, a burn tower structure, a burn box, a driving pad, maintenance/facilities yard, and vehicle storage. The campus would also include asphalt-paved parking areas, landscaping, and a retention pond. (See Figures 3 and 4 for a preliminary site plan and floor plan)




The campus is planned to accommodate up to approximately 270 students at one time and be staffed by up to 50 employees, including administrators, faculty, and support staff. Operational hours would range from 7:00 am to 10:00 pm on weekdays throughout the year, with most activity on the campus taking place during morning and afternoon hours and more limited activities occurring during evenings and weekends.

Project Timing: If approved, the project is expected to begin construction in late 2021 and begin operating in early 2023.



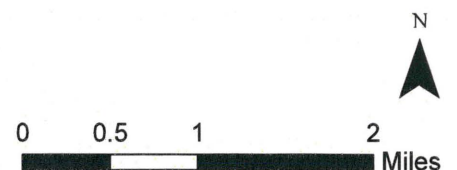
Project Location

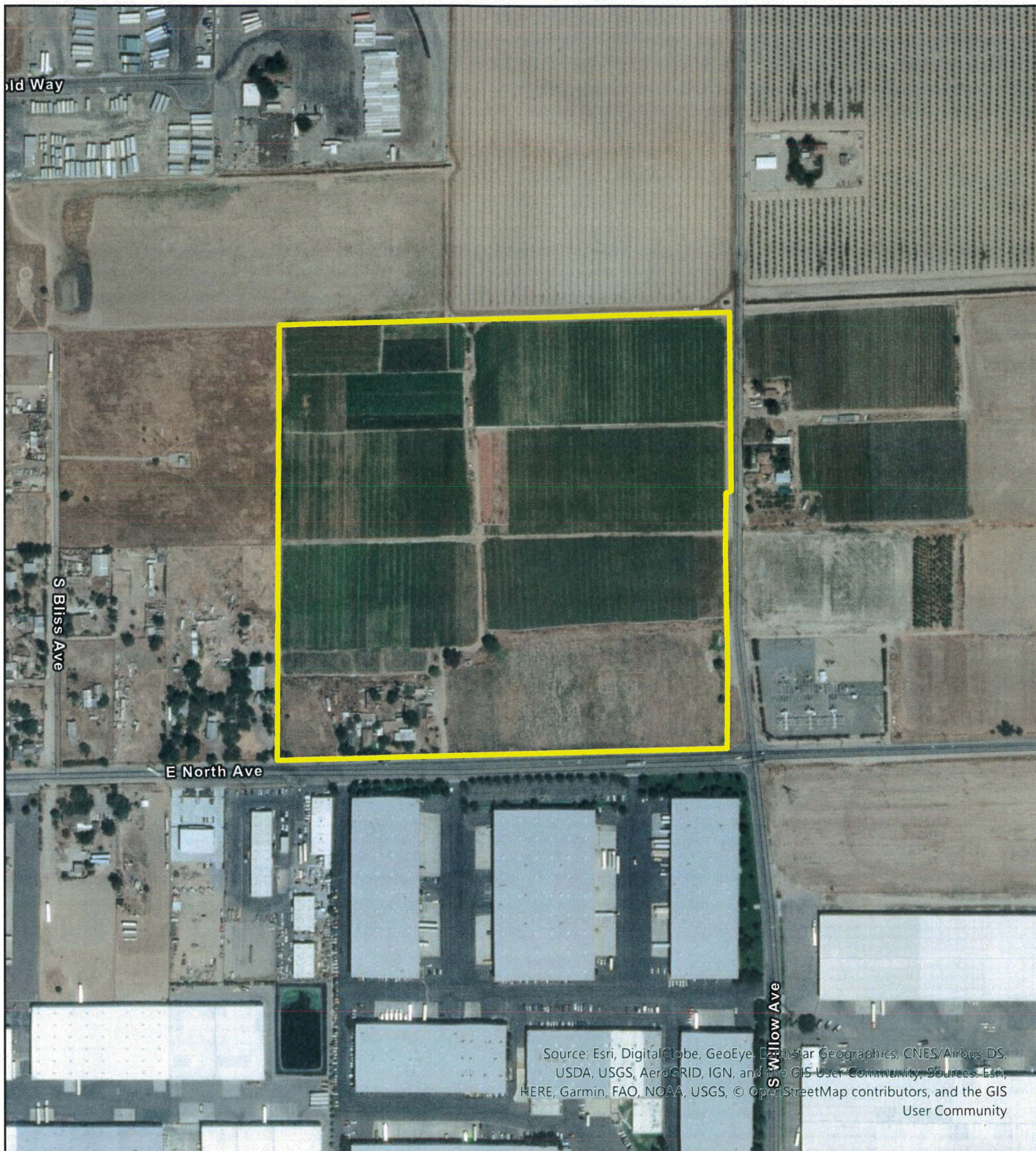
First Responders Campus Project
 State Center Community College District

-  Fresno Sphere of Influence
-  Fresno City Limit
-  Project Site

ODELL Planning & Research, Inc.
 Environmental Planning • School Facility Planning • Demographics

Figure 1





Project Site

Figure 2

First Responders Campus Project
 State Center Community College District

 Project Site

ODELL Planning & Research, Inc.
 Environmental Planning • School Facility Planning • Demographics

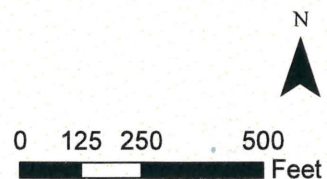
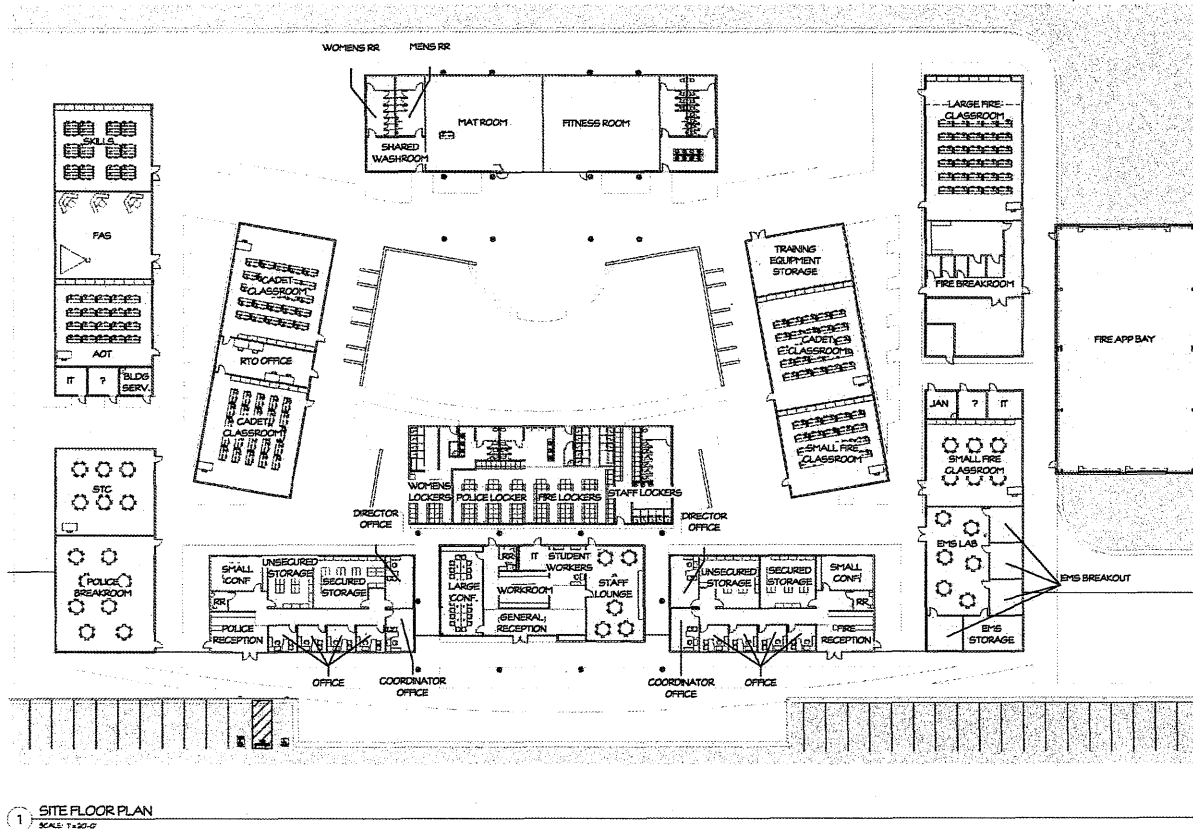


Figure 4



FIRST RESPONDERS CAMPUS

REVIEWED IN ACCORDANCE WITH THE REQUIREMENTS OF 24A CCR

Office of Statewide Health Planning & Development
FACILITIES DEVELOPMENT DIVISION



BUILDING FLOOR PLANS
(FOR PLAN CHECK ONLY)

PRE-02