

Appendix E

Cultural Resources Report

October 26, 2020

12472

H.P. Kang
Planning Division
City of Hemet
445 E. Florida Ave.
Hemet, California 92543-4209

***Subject: Cultural Resources Inventory for the Stetson Corner Project, City of Hemet,
Riverside County, California***

Dear H.P. Kang:

This letter documents the Phase I cultural resources inventory conducted by Dudek for the Stetson Corner Project, located in the City of Hemet, Riverside County, California. The City of Hemet (City) is the lead agency for planning purposes under the California Environmental Quality Act (CEQA). A previous report completed for the Project covered the property lots themselves, approximately 8.6 acres. The Project site has since been expanded by 3.2 acres to include adjacent paved sidewalks and roadways; the Project now represents a total of approximately 11.8 acres. This is to facilitate offsite improvements for access to the Project site.

SRSinc conducted a records search in 2018 and is summarized within this report (SRSinc 2018). The 2018 records search did not identify any previously recorded cultural resources within the initial proposed Project site, however resources were identified in the surrounding one-mile records search buffer. An updated Eastern Information Center (EIC) records search was conducted by EIC staff and received on October 20, 2020. Dudek conducted an intensive pedestrian survey for cultural resources of the Project site in 2020 in accordance with the standards and guidelines defined by CEQA and the Office of Historic Preservation (OHP). No cultural resources were identified during survey and the area was observed to have been subject to substantial previous disturbance.

Dudek requested a search of the Sacred Lands File at the Native American Heritage Commission in June 2020; the results were positive, however, the results did not clarify if tribal resources intersects the Project site or are located within the one-mile search radius. Letters sent by Dudek to Native American tribal contacts in the area requesting information on tribal resources in the area. To date, responses have been received from Cabazon Band of Mission Indians, Agua Caliente Band of Cahuilla Indians and Soboba Band of Luiseño Indians. The Project, as presently

H.P. Kang

Subject: Cultural Resources Inventory for the Stetson Corner Project, City of Hemet, Riverside County, California

designed, appears to have a low to moderate possibility for the presence of unanticipated cultural resources. Archaeological and tribal monitoring is recommended in the northwest quadrant, which constitutes the area of moderate archaeological sensitivity. The remainder of the Project site, including the eastern lot shows a history of agricultural and residential disturbance, constituting a low potential to encounter intact subsurface cultural deposits.

PROJECT DESCRIPTION AND LOCATION

The approximately 11.8-acre Project site is located southeast of the intersection of Stetson Avenue and Sanderson Avenue, in the City of Hemet in Riverside County (Figure 1, Project Location). The Project site is located within the U.S. Geological Survey 7.5-minute Winchester quadrangle map, Section 17 and 20 of Township 5 South, Range 1 West. The Assessor's Parcel Numbers are 460-150-014 and 460-150-015.

The Project proposes to develop commercial uses including a gas station, convenience store, a drive-thru fast food restaurant, and a car wash. The existing McCrometer Corp structures would remain on-site and no changes to those uses or structures would be included in the proposed Project. However, the proposed Project would relocate the existing McCrometer parking lot to the eastern currently vacant portion of the site to allow for the construction and operation of the new commercial uses along the western portion of the Project site. The proposed Project may also include roadway improvements to Sanderson Avenue near its intersection with Stetson Avenue.

REGULATORY FRAMEWORK

California Register of Historical Resources (CRHR)

In California, the term "historical resource" includes but is not limited to "any object, building, structure, site, area, place, record, or manuscript which is historically or archaeologically significant, or is significant in the architectural, engineering, scientific, economic, agricultural, educational, social, political, military, or cultural annals of California" (PRC section 5020.1[j]). In 1992, the California legislature established the CRHR "to be used by state and local agencies, private groups, and citizens to identify the state's historical resources and to indicate what properties are to be protected, to the extent prudent and feasible, from substantial adverse change" (PRC section 5024.1[a]). The criteria for listing resources on the CRHR were expressly developed to be in accordance with previously established criteria developed for listing in the National Register of Historic Places (NRHP), enumerated below. According to PRC Section

5024.1(c)(1–4), a resource is considered historically significant if it (i) retains “substantial integrity,” and (ii) meets at least one of the following criteria:

1. Is associated with events that have made a significant contribution to the broad patterns of California's history and cultural heritage.
2. Is associated with the lives of persons important in our past.
3. Embodies the distinctive characteristics of a type, period, region, or method of construction, or represents the work of an important creative individual, or possesses high artistic values.
4. Has yielded, or may be likely to yield, information important in prehistory or history.

The CRHR protects cultural resources by requiring evaluations of the significance of prehistoric and historic resources. The criteria for the CRHR are nearly identical to those for the NRHP and properties listed or formally designated as eligible for listing in the NRHP are automatically listed in the CRHR, as are the state landmarks and points of interest. The CRHR also includes properties designated under local ordinances or identified through local historical resource surveys.

California Environmental Quality Act

As described further below, the following CEQA statutes and CEQA Guidelines are of relevance to the analysis of archaeological, historic, and tribal cultural resources:

- PRC section 21083.2(g) defines “unique archaeological resource.”
- PRC section 21084.1 and CEQA Guidelines section 15064.5(a) defines “historical resources.” In addition, CEQA Guidelines section 15064.5(b) defines the phrase “substantial adverse change in the significance of an historical resource;” it also defines the circumstances when a Project would materially impair the significance of an historical resource.
- PRC section 21074(a) defines “tribal cultural resources.”
- PRC section 5097.98 and CEQA Guidelines section 15064.5(e): Set forth standards and steps to be employed following the accidental discovery of human remains in any location other than a dedicated ceremony.
- PRC sections 21083.2(b)-(c) and CEQA Guidelines section 15126.4: Provide information regarding the mitigation framework for archaeological and historic resources, including examples of preservation-in-place mitigation measures; preservation-in-place is the preferred manner of mitigating impacts to significant archaeological sites because it

maintains the relationship between artifacts and the archaeological context, and may also help avoid conflict with religious or cultural values of groups associated with the archaeological site(s).

More specifically, under CEQA, a Project may have a significant effect on the environment if it may cause "a substantial adverse change in the significance of an historical resource." (PRC section 21084.1; CEQA Guidelines section 15064.5[b]). If a site is either listed or eligible for listing in the CRHR, or if it is included in a local register of historic resources, or identified as significant in a historical resources survey (meeting the requirements of PRC section 5024.1[q]), it is a "historical resource" and is presumed to be historically or culturally significant for purposes of CEQA. (PRC section 21084.1; CEQA Guidelines section 15064.5[a]). The lead agency is not precluded from determining that a resource is a historical resource even if it does not fall within this presumption. (PRC section 21084.1; CEQA Guidelines section 15064.5[a]).

A "substantial adverse change in the significance of an historical resource" reflecting a significant effect under CEQA means "physical demolition, destruction, relocation, or alteration of the resource or its immediate surroundings such that the significance of an historical resource would be materially impaired" (CEQA Guidelines section 15064.5[b][1]; PRC section 5020.1[q]). In turn, the significance of an historical resource is materially impaired when a Project:

1. Demolishes or materially alters in an adverse manner those physical characteristics of an historical resource that convey its historical significance and that justify its inclusion in, or eligibility for, inclusion in the California Register; or
2. Demolishes or materially alters in an adverse manner those physical characteristics that account for its inclusion in a local register of historical resources pursuant to section 5020.1(k) of the PRC or its identification in an historical resources survey meeting the requirements of section 5024.1(g) of the PRC, unless the public agency reviewing the effects of the Project establishes by a preponderance of evidence that the resource is not historically or culturally significant; or
3. Demolishes or materially alters in an adverse manner those physical characteristics of a historical resource that convey its historical significance and that justify its eligibility for inclusion in the California Register as determined by a lead agency for purposes of CEQA (CEQA Guidelines section 15064.5[b][2]).

Pursuant to these sections, the CEQA inquiry begins with evaluating whether a Project site contains any "historical resources," then evaluates whether that Project will cause a substantial

adverse change in the significance of a historical resource such that the resource's historical significance is materially impaired.

If it can be demonstrated that a Project will cause damage to a unique archaeological resource, the lead agency may require reasonable efforts be made to permit any or all of these resources to be preserved in place or left in an undisturbed state. To the extent that they cannot be left undisturbed, mitigation measures are required (Section 21083.2[a], [b], and [c]).

Section 21083.2(g) defines a unique archaeological resource as an archaeological artifact, object, or site about which it can be clearly demonstrated that without merely adding to the current body of knowledge, there is a high probability that it meets any of the following criteria:

1. Contains information needed to answer important scientific research questions and that there is a demonstrable public interest in that information.
2. Has a special and particular quality such as being the oldest of its type or the best available example of its type.
3. Is directly associated with a scientifically recognized important prehistoric or historic event or person.

Impacts to non-unique archaeological resources are generally not considered a significant environmental impact (PRC section 21083.2[a]; CEQA Guidelines section 15064.5[c][4]). However, if a non-unique archaeological resource qualifies as tribal cultural resource (PRC 21074[c]; 21083.2[h]), further consideration of significant impacts is required.

CEQA Guidelines section 15064.5 assigns special importance to human remains and specifies procedures to be used when Native American remains are discovered.

City of Hemet Regulations

The City of Hemet has goals and policies in place to protect the rich cultural and historical resources. The 2030 General Plan (Chapter 9).

- GOAL HR-1 Identify, maintain, protect, and enhance elements of Hemet's cultural, historic, social, economic, architectural, agricultural, archaeological, and scenic heritage.
 - Policy HR-1.1 Preservation Encourage the preservation and re-use of historic structures, landscape features, roads, landmark trees, and trails as well as public access to significant scenic vistas, viewpoints, and view corridors.

- Policy HR-1.2 Appreciation Promote an understanding and appreciation of Hemet's history and built environment.
- Policy HR-1.3 Incentives Provide incentives wherever possible to protect, preserve, and maintain the City's heritage by offering alternatives to demolition and encouraging restoration and rehabilitation. Where feasible, allocate resources and/or tax credits to prioritize the retrofitting of irreplaceable historic structures.
- Policy HR-1.4 Demolition Alternatives Require development applications that include the demolition of structures older than 50 years or are listed in the Eastern Information Center Historic Data File for Riverside County, to consider alternatives to demolition such as architecturally compatible rehabilitation, adaptive reuse, and relocation.
- Policy HR-1.5 Neighborhood Character Encourage retention of the character of existing historic structures and design elements that define the built environment of the City's older neighborhoods.
- Policy HR-1.6 Use/Adaptive Re-use Encourage retention of structures in their original use or reconversion to their original use where feasible. Encourage sensitive, adaptive re-use where the original use is no longer feasible.
- Policy HR-1.7 Historic Design Encourage the incorporation of historic design features, as well as safety, when street or other public improvements are proposed in older neighborhoods and districts.
- Policy HR-1.8 Historic Building Code Utilize use of the California State Historic Building Code to facilitate the proper restoration and rehabilitation of historic structures.
- Policy HR-1.9 Public Buildings and Sites Maintain and improve City owned or City-funded historic buildings and sites in an architecturally and environmentally sensitive manner.
- GOAL HR-2 Preserve significant archeological and paleontological resources in areas under the City's jurisdiction, to the greatest extent possible.
 - Policy HR-2.1 Consultation Consult with the Soboba Band and any other interested Indian tribes to identify and appropriately address cultural resources

and tribal sacred sites through the development review process. Require a Native American Statement as part of the environmental review process of development Projects with identified cultural resources.

- Policy HR-2.2 Monitoring Require monitoring of new developments where resources or potential resources have been identified in the review process
- Policy HR-2.3 Evaluation Resources found prior to or during site development shall be evaluated by a qualified archaeologist or paleontologist, and appropriate mitigation measures shall be applied before resumption of development activities. Development Project proponents shall bear all costs associated with the monitoring and disposition of cultural resources management within the Project site.
- Policy HR-2.4 Preferred Repository To the extent practicable and appropriate, newly uncovered non-Native American archeological and paleontological resources shall be transferred to the Western Science Center of Diamond Valley for cataloguing, study and, if appropriate, display.
- GOAL HR-3 Foster increased community awareness and appreciation of Hemet's unique heritage.
 - Policy HR-3.1 Program Coordination Coordinate with community organizations, local Indian tribes, property owners, educational institutions, and other governmental agencies to facilitate Hemet's historic preservation program.
 - Policy HR-3.2 Activities/Events Encourage and promote activities and events designed to educate the community about the history of the Hemet area and the recognition of local historical and cultural resources.

EIC RECORDS SEARCH

SRSinc conducted a California Historical Resources Information System (CHRIS) records search at the Eastern Information Center (EIC) for the initial Project site and a surrounding one-mile buffer on February 7, 2018. This search included a review of their collection of mapped prehistoric, historical, and built-environment resources, Department of Parks and Recreation (DPR) Site Records, technical reports, archival resources, and ethnographic references. Dudek consulted additional sources outside of the CHRIS system, including the NRHP, California Inventory of Historical Resources/CRHR and listed OHP Archaeological Determinations of

Eligibility, California Points of Historical Interest, California Historical Landmarks, and Caltrans Bridge Survey information. The 2018 records search did not identify archaeological or historic-era built environment resources within in the Project site. However, eight (8) cultural resources, mainly consisting of historic-era residences, have been recorded within one-mile of the Project site. Dudek requested a subsequent CHRIS records search at the EIC on February 2, 2020 for the current expanded proposed Project site and a surrounding one-mile radius (Confidential Appendix A). The EIC results were received on October 20, 2020. The EIC records search results are discussed in the next section below.

Records Search Results

Previous Archaeological Studies

A total of thirty-three (33) previous reports were identified within a one-mile radius, with only four previously recorded reports intersecting the Project site (RI-00186, RI-08081, RI-08706). There was no record at the EIC of the SRSinc 2018 report, but for the purposes of this report it is included in the total (Table 1). Two reports cover the adjacent properties (RI-04809 and RI-07584).

Eight (8) cultural resources were identified in the current record search within a one-mile radius of the Project site. None are located within or reported to be immediately adjacent to the initial 2018 Project site, or the 2020 enlargement. Two discrepancies were found between the 2018 record search and the current effort's record search. Resources P-33-005202 and P-33-013322 were reported within the one-mile buffer of the SRSinc (2018) however they were not included in the current record search. As these resources were identified within the one-mile buffer and not in the Project site, they were included in Table 2. for informational purposes. The archaeological resources include a two prehistoric sites, and eight historic resources: one historic district, two structures, three buildings and two sites (Table 2).

H.P. Kang

Subject: Cultural Resources Inventory for the Stetson Corner Project, City of Hemet, Riverside County, California

Table 1
Previous Studies Conducted Within the Project Search Area

Author(s)	Report No.	Year	Title
Helen Wells	RI-00186	1975	Archaeological Impact Report: Eastern Municipal Water District, Riverside County, California: PL 984 Water Systems Addition
D.M. Van Horn	RI-00501	1978	Archaeological Survey of 70 Acre Parcel of Land Located In San Jacinto Valley Near Hemet
Roger J. Desautels and Terry Malone	RI-00693	1979	Archaeological Assessment and Survey Report on Tentative Tract 13112, A 120-Acre Parcel of Land Located Near Hemet in the County of Riverside, California
Lesley C. Eckhardt and Richard L. Canico	RI-01140	1978	Draft Environmental Impact Report for Tentative Tract, General Plan Amendment and Zone Change in the Seven Hills Development
Cook, John R.	RI-01631	1982	Letter Report: Results of the Archaeological Survey Of 173.5 Acres in Hemet, California Fir Haworth And Anderson, Inc.
Torres, John, Joan Schneider, and Bruce Love	RI-03268	1991	Cultural Resources Assessment, Tentative Parcel 26877, Hemet, Riverside County, CA.
Robinson, Mark and Patrick Sanger	RI-03747	1994	Cultural Resources Survey Report Number 7 - Newport Road Realignment, Riverside County, California
Brown, Joan	RI-03767	1994	Cultural Assessment and Survey of Portions of Hemet and Salt Creek Channels For The Salt Creek Master Drainage Plan
Drover, Christopher	RI-03828	1994	Environmental Impact Evaluation: A Cultural Resources Inventory Assessment Of The Proposed Reach 7 Reclaimed Water Transmission Facilities Pipeline Alignment Between Warren Road and State Street, Eastern Municipal Water District
ROBINSON, MARK C. and MELINDA C. HORNE	RI-04024	1997	FINAL REPORT, METROPOLITAN WATER DISTRICT EASTSIDE RESERVOIR PROJECT: CULTURAL RESOURCES SURVEY REPORT NUMBER 12, NORTH HILLS MULTI-SPECIES RESERVE
Smith, Brian F.	RI-04609	2002	A Cultural Resources Study for the Page Ranch Project, City of Hemet, San Jacinto Valley, County of Riverside
Padon, Beth	RI-04809	2004	Letter Report: Paleontological and Archaeological Monitoring of a 40-Acre Parcel within the City of Hemet, Riverside County
Aislin-Kay, Marnie and Michael Dice	RI-05316	2004	Phase I Cultural Resources Inventory for Tract 31801 and Tract 31808, City of Hemet, Riverside County, CA
Goodwin, Riordan	RI-05524	2005	Cultural Resources Assessment, Sanderson Square (APN 456-030-11, - 12, -13, AND -14), City of Hemet, Riverside County, CA
Lange, Frederick	RI-05526	2005	Cultural Resources Assessment, Wentworth Drive Complex, City of Hemet, Riverside County, CA
Aislin-Kay, Marnie and Michael Dice	RI-07389	2007	Phase 1 Cultural Resource Survey, Tract #35392, Tract #35393 and Tract #35394, The Rancho Diamante Project, City of Hemet, Riverside County, California.
Virginia Austerman	RI-07420	2007	Cultural Resources Assessment: Hemet Center for Medical Excellence Project (APN 460-250-021), City of Hemet, Riverside County, California
Sanka, Jennifer M.	RI-07584	2008	Phase I Cultural Resources Assessment and Paleontological Records Review Stetson Crossing Project, Hemet, Riverside County, California
Andrea M. Craft and Theodore G. Cooley	RI-07833	2008	Archaeological Survey Report for Southern California Edison Company Avenger 12kV DSP Project, Riverside County, California (WO #6577-5344, AI#6-5347 and WO#6177-5355, AI#6-5348)
Wayne H. Bonner and Arabesque Said	RI-08081	2009	Letter Report: Cultural Resource Records Search and Site Visit Results for the Royal Street Communications California, LLC Candidate LA3133B (Mary Henley Park), 801 South Kirby Street, Hemet, Riverside County, California
Cary D. Cotterman and	RI-08640	2010	Cultural Resources Inventory of a Proposed Pole Replacement Hemet, Riverside

H.P. Kang

Subject: Cultural Resources Inventory for the Stetson Corner Project, City of Hemet, Riverside County, California

Evelyn N. Chandler			County, California (W.O. 4950-0496)
Wayne H. Bonner and Sarah A. Williams	RI-08659	2011	Cultural Resource Records Search and Site Visit Results for T-Mobile USA Candidate IE24332-A
Marnie Aislin-Kay and Wayne H. Bonner	RI-08706	2010	Cultural Resources Record Search and Site Visit Results for T-Mobile USA Candidate IE24204-C
Melinda C. Romano	RI-09530	1996	Cultural Resources Survey Report Number 15 Miscellaneous Parcels Located Outside the Original Reservoir Take-Line
David Brunzell	RI-09532	2014	Cultural Resource Assessment Sun Edison Hemet Project City of Hemet, Riverside County, California
John J. Eddy, M. Colleen Hamilton, Susan K. Goldberg, Dennis McDougall, and Gabrielle Duff	RI-09691	2014	Archaeological Evaluation Report Realign State Route 79 between Domenigoni Parkway and Gilman Springs Road in the Cities of Hemet and San Jacinto and the County of Riverside, Riverside County, California, District 8-RIV-79-KP R25.4/R54.4 (PM R15.78/R33.80), PN 0800000784/EA 08- 49400
Andrew Belcourt	RI-09824	2011	Cultural Resources Assessment Hemet-Ryan Airport Master Plan City of Hemet Riverside County, California
Susan K. Goldberg	RI-10007	2001	Metropolitan Water District of Southern California, Eastside Reservoir Project, Final Report of Archaeological Investigation. Volume I: Project Overview and Summary of Archaeological Investigation.
DENNIS MCDUGALL, JOAN GEORGE, and VANESSA MIRRO	RI-10191	2017	Historic Property Survey Report for The Salt Creek Trail Project Riverside County, California Cml 5956 (241)
NA	RI-10643	2003	Cultural Resources Survey of 43.46 Acres in Hemet, California: APN 456-030-020-2
Daniel G. Foster, Mark V. Thornton, and Maria C. Sosa	RI-10814	2001	Management Plan for CDF's Historic Buildings and Archaeological Sites
Nancy Wiley and Kassie Sugimoto	NA	2018	Report of Findings from a Record Search Conducted for Assessor's Parcel Number 460-150-014 and 460-150-015

Table 2
Cultural Resources Previously Recorded in the Project One-Mile Buffer

Site Number	Trinomial	Period	Type	CRHP/NRHP Status
P-33-005202*	CA-RIV-005202	Historic	Structure	3S. Eligible Structure
P-33-005780	-	Historic	District	Unevaluated
P-33-006309	-	Historic	Building	Unevaluated
P-33-011196	-	Prehistoric	Site	Unevaluated
P-33-013322*	CA-RIV-007420	Prehistoric	Site	Unevaluated
P-33-015743	CA-RIV-008196	Historic	Site	6Z. Found not eligible through survey evaluation
P-33-017000	-	Historic	Site	Unevaluated
P-33-017004	-	Historic	Structure	Unevaluated
P-33-019614	-	Historic	Building	Unevaluated
P-33-028850	-	Historic	Building	Unevaluated

* Present in SRSinc (2018) listing and not current record search.

Archival Research

Dudek consulted the GLO Land Patents, which are some of the first historical documents produced as a result from the Land Ordinance of 1785, documenting the transfer of public lands to private individuals (BLM 2020). Records showed the presence of GLO maps from 1867 and 1880 (T5S, R1W) which document the Project site in section 20. They show no structures are present on any of the GLO records. The actual land patents for section 20 were unavailable from the Bureau of Land Management. Rancho San Jacinto Viejo was shown on the descriptions of the land patents (1880) and Plat maps (1867) as just outside of the Project site.

The Historic topographic maps included images from the years; 1943, 1954, 1962, 1970, 1975, 1979, 1986, 2012, 2015, and 2018. The adjacent roads, W. Stetson Ave and Sanderson Ave are present on the earliest topographic map in 1943, as well as two structures on the McCrometer Corp lot, and a homesite on the adjacent lot to the east.

A review of historic maps and aerials going back to 1943 indicates that the Project site has been occupied by multiple developments and structures (Historic Aerials 2020). The historic aerials included images from 1967, 1978, 1996, 2002, 2005, 2009, 2010, 2012, 2014 and 2016. The lot on the east side of the McCrometer Corp showed clear agricultural tilling through its central and southern area until the demolition of the home site between 2012 and 2014.

The center McCrometer Corp structures were established between the 1967 and 1978 aerial image with 3 work buildings and 2 office buildings. The two office buildings were replaced by a single large office building between 1978 and 1996. One additional work building was added between 1978 and 1996. There appears to be renovations of the work buildings in the 1996, 2002, and 2005 aerials, including new roofs, extensions of buildings, and footprint alteration. With these changes to the majority of the structures on site, the oldest original building would date to post 1978, and therefore not meet the age criteria.

The western lot contained a home site fronting on Sanderson Ave in the 1967 aerial with three small structures and an open field to the rear. At the back of the lot are three parallel East/West oriented barn like structures. The 1978 aerial reveals that these three structures are gone. This leaves the three well defined outbuildings on site until 1996 when the home site and at least three of the four total buildings on the west lot are removed and a parking lot road appears to be added. Associated mass grading of the south western quadrant of the Project site is visible during this time. The final structure is clearly gone by the 2005 aerial, when the site appears largely as it stands today. These aerials show that the entire Project site has had intensive surface disturbance. Through all areas except the north western area.

H.P. Kang

Subject: Cultural Resources Inventory for the Stetson Corner Project, City of Hemet, Riverside County, California

NATIVE AMERICAN COORDINATION

The City is responsible for government-to-government consultation with Native American Tribes pursuant to California Assembly Bill (AB) 52. Dudek contacted the Native American Heritage Commission (NAHC) to perform a Sacred Lands File (SLF) search for identification of significant resources within the Project. The NAHC SLF search returned positive results (Appendix B). Dudek sent, via certified mail, outreach letters to all tribal contacts identified in the NAHC listing on June 30, 2020 (Appendix B). The positive response letter indicated Pechanga as a primary source of information for the positive listing. E-mail (July 7, 2020) and phone attempts for further information gathering have not yielded direct communication on this matter to date.

Cabazon Band of Mission Indians responded on July 7, 2020 to indicate that they had no record of Native American resources in the Project site.

Soboba Band of Luiseño Indians responded via email on August 15, 2020, to indicate that the Project was in proximity to known sites and requested to be included in consultation processes, Project updates, primary point of contact for tribal issues, Soboba monitoring during construction, and that proper procedures be taken and the requests of the tribe be honored.

Agua Caliente Band of Cahuilla Indians responded via email on September 9, 2020, acknowledging the Project to be within the tribe's Traditional Use Area. They request copies of the record search and any reports generated for this Project.

To date, no other responses have been received. If received, they will be forwarded to the City. Tribal Communication documentation is included as Confidential Appendix C.

CULTURAL RESOURCES SURVEY

Methods

Dudek archaeologist Jessica Colston conducted an intensive pedestrian survey on March 20, 2020 using standard archaeological procedures and techniques. These field techniques included enhanced sanitation and social distancing protocols as advised by the Center for Disease Control (CDC) during the Covid-19 pandemic. All field practices met the Secretary of Interior's standards and guidelines for a cultural resources inventory. The survey methods consisted of a pedestrian survey conducted in parallel transects spaced no more than 10 meters apart over the entire Project site. Within each transect, the ground surface was examined for prehistoric artifacts (e.g., flaked stone tools, tool-making debris, stone milling tools, ceramics, fire-affected

rock), soil discoloration that might indicate the presence of a cultural midden, soil depressions, features indicative of the current or former presence of structures or buildings (e.g., standing exterior walls, post holes, foundations), and historic artifacts (e.g., metal, glass, ceramics, building materials). Ground disturbances such as burrows and cut banks were also visually inspected for exposed subsurface materials. Approximately two-thirds of native ground surfaces were directly observable during pedestrian survey; visibility of native soils was limited by the presence of paved roads, sidewalks, landscaped areas in the McCrometer facility. No newly identified artifacts or archaeological features were identified within the Project site.

All fieldwork was documented using field notes, digital photography, and a Global Positioning System (GPS) receiver with sub-meter accuracy, iPad technology with close-scale field maps, and aerial photographs. All field notes, photographs, and records related to the current study are on file at Dudek's Encinitas, California office.

Results

No cultural resources were identified during the Dudek pedestrian survey. The entire Project site has been disturbed through previous development, road construction, and surface grading. The McCrometer Corp., warehouses, workshops and office buildings currently occupy the majority of the site, with asphalt parking lots/driveway and landscaping occupying the remainder. The eastern and western lots contained disturbed surface soils. Inspection of rodent burrows and spoils in the vegetation planters identified only similar surface sediments comprised primarily of silty sand alluvium. The western lot contained imported gravels and was clearly mass graded at some point and has been used as extra parking. The eastern lot appeared to have recent earth disturbing activities, likely involved in the removal of the residential home between 2012 and 2014.

The office building was constructed post 1978 and therefore does not qualify as an historical resource.

All areas of the Project site appear to have been subject to substantial previous disturbance through grading, previous construction, road development, utility installation, and other activities. As SRSinc (2018) did not perform a pedestrian survey for the initial Project study, there was no recent record to compare. The expanded Project site is occupied by existing roads and sidewalks. Based on visual observation of present conditions, and review of existing documentation, subsurface soils within the Project site are unlikely to contain intact cultural deposits.

SUMMARY OF FINDINGS

Based on SRSinc 2018 records search and Dudek's Phase I cultural resources inventory of the Project site suggests that there is moderate potential for the inadvertent discovery of cultural resources during groundbreaking activities. The record search and subsequent report for the 2018 Project site indicated that no cultural resources had been recorded within the initial Project site and there was no mention of cultural resources that would fall in the present expanded Project site, adjacent to this initial area. Dudek's pedestrian survey did not identify cultural resources within the Project site. As the building that currently exists at the Project site is less than 45 years old, it does not qualify as an historical resource. Given the level of disturbance within the Project site, it is unlikely that intact archaeological resources are present within subsurface contexts.

The northwestern portion of the site has been capped with a parking lot between 1967 and 1978, which was previously a historic homestead. It is possible for capped deposits to exist in this area. This area constitutes moderate potential for buried deposits.

There are no known historical resources, as defined under CEQA that would be impacted by the Project as presently designed. As a result, the proposed Project would have a less than significant impact on cultural resources. Based on the level of prior disturbance and absence of cultural resources and intact native sediments, there is a low-moderate potential for inadvertent discoveries of cultural resources during Project implementation.

MANAGEMENT RECOMMENDATIONS

While there is currently no previous record of cultural resources within the Project site, this does not indicate that there are no resources present. Historic aerials indicate that all but the northwestern portion of the Project site has been previously disturbed to an average agricultural depth of 3 ft. The eight (8) resources within one-mile of the Project site, including a district, and the possibility of capped archaeological deposits under the parking lot in the northwest area inform Dudek's recommendation of archaeological monitoring in the northwest quadrant of the Project site. Mitigation measures for archaeological monitoring is provided in the next section.

Given the positive results of the Sacred Lands File search, and the fact that AB 52 consultation is ongoing, it should be assumed that additional management requirements may result from consultation between the City and Native American groups under AB 52.

Monitoring

Prior to ground disturbing activity within the northwest quadrant of the site where the asphalt parking lot exists, the applicant shall retain a registered professional archaeologist (RPA) to act as Principal Investigator for the Project. Archaeological monitoring of all mass grading and trenching activities within the northwest quadrant of the site where the asphalt parking lot exists shall be done with archaeological personnel who meet the Secretary of the Interior's Professional Qualifications Standards (PQS, 36 CFR Part 61) for archaeology. The Project archaeologist shall have the authority to temporarily redirect earthmoving activities in the event that suspected archaeological resources are unearthed during Project construction. The Project Archaeologist, in consultation with the Consulting Tribe(s), the contractor, and City, shall develop a Cultural Resources Management Plan (CRMP) in consultation pursuant to the definition in AB 52 to address the details, timing and responsibility of all archaeological and cultural activities that will occur within the northwest quadrant of the site where the asphalt parking lot exists. A consulting tribe is defined as a tribe that initiated the AB 52 tribal consultation process for the Project, has not opted out of the AB 52 consultation process, and has completed AB 52 consultation with the City as provided for in Cal Pub Res Code Section 21080.3.2(b)(1) of AB 52. Details in the Plan shall include:

- a. Project grading and development scheduling;
- b. The Project archeologist and the Consulting Tribes(s) (as defined above) shall attend the pre-grading meeting with the City, the construction manager and any contractors and will conduct a mandatory Workers Environmental Awareness Training (WEAP) to those in attendance. The Training will include a brief review of the cultural sensitivity of the Project and the surrounding area; what resources could potentially be identified during earthmoving activities; the requirements of the monitoring program; the protocols that apply in the event inadvertent discoveries of cultural resources are identified, including who to contact and appropriate avoidance measures until the find(s) can be properly evaluated; and any other appropriate protocols. All new construction personnel that will conduct earthwork or grading activities that begin work on the Project following the initial Training must take the WEAP prior to beginning work and the Project archaeologist and Consulting Tribe(s) shall make themselves available to provide the training on an as-needed basis;

- c. The protocols and stipulations that the contractor, City, Consulting Tribe(s) and Project archaeologist will follow in the event of inadvertent cultural resources discoveries, including any newly discovered cultural resource deposits that shall be subject to a cultural resources evaluation. Preferred treatment of inadvertent discoveries consists of basic recordation and non-destructive analysis. Depending upon the significance of the find under CEQA (14 CCR 15064.5(f), California PRC Section 21082), the archaeologist may simply record the find and allow work to continue in accordance with the aforementioned CRMP.

Consulting Tribal Agreement

Prior to the issuance of a grading permit, and prior to the commencement of ground disturbing activity, the applicant shall secure an agreement with the Consulting Tribe(s) for Tribal Monitoring and the Treatment and Disposition of all tribally associated artifacts discovered within the project boundaries. Native American Monitor(s) from the Consulting Tribe(s) shall conduct monitoring of all initial ground disturbing activities associated with the project. The Native American Monitor(s) shall have the authority to temporarily redirect earthmoving activities in the event that suspected archaeological resources are unearthed during project construction.

In the event that Native American cultural resources are discovered during the course of grading (inadvertent discoveries), the following procedures shall be carried out for final disposition of the discoveries:

- a) One or more of the following treatments, in order of preference, shall be employed. Evidence of such shall be provided to the City:
 - i. Preservation-In-Place of the cultural resources, if feasible. Preservation in place is defined as avoiding the resources, leaving them in the place they were found with no development affecting the integrity of the resources.
 - ii. Onsite reburial of the discovered items. This shall include measures and provisions to protect the future reburial area from any future impacts in perpetuity. Reburial shall not occur until all legally required cataloging and basic recordation have been completed. No recordation of sacred items is permitted without the written consent of the Consulting Tribe(s). The location for the future reburial area shall be identified on a confidential exhibit on file with the City, and concurred to by the Consulting Tribe(s) prior to certification of the environmental document.

H.P. Kang

Subject: Cultural Resources Inventory for the Stetson Corner Project, City of Hemet, Riverside County, California

Unanticipated Discovery of Human Remains

In accordance with Section 7050.5 of the California Health and Safety Code, if human remains (or remains that may be human) are discovered at the project site during grading or earthmoving, the construction contractors, project archaeologist, and/or designated Native American Monitor shall immediately stop all activities within 100 feet of the find. The project proponent shall then inform the Riverside County Coroner and the City of Hemet Planning Department immediately. The coroner shall be permitted to examine the remains as required by California Health and Safety Code Section 7050.5(b). Section 7050.5 requires that excavation be stopped in the vicinity of discovered human remains until the coroner can determine whether the remains are those of a Native American. If human remains are determined as those of Native American origin, the applicant shall comply with the state relating to the disposition of Native American burials that fall within the jurisdiction of the NAHC (PRC Section 5097). The coroner shall contact the NAHC to determine the most likely descendant(s). The MLD shall complete his or her inspection and make recommendations or preferences for treatment within 48 hours of being granted access to the site. The Disposition of the remains shall be overseen by the most likely descendant(s) to determine the most appropriate means of treating the human remains and any associated grave artifacts, in consultation with the property owner and the lead agency. Should you have any questions relating to this report and its findings please contact me.

Respectfully Submitted,



Jessica Colston, B.A.
Archaeologist

DUDEK

Office: 760.815.6642

email: jcolston@dudek.com

*Att: Figure 1. Location Map
Appendix A: Confidential SCIC Records Search Information
Appendix B: NAHC and Tribal Correspondence
Appendix C: Confidential Tribal Correspondence*

*cc: Micah Hale, Dudek
Dawna Marshall, Dudek*

H.P. Kang

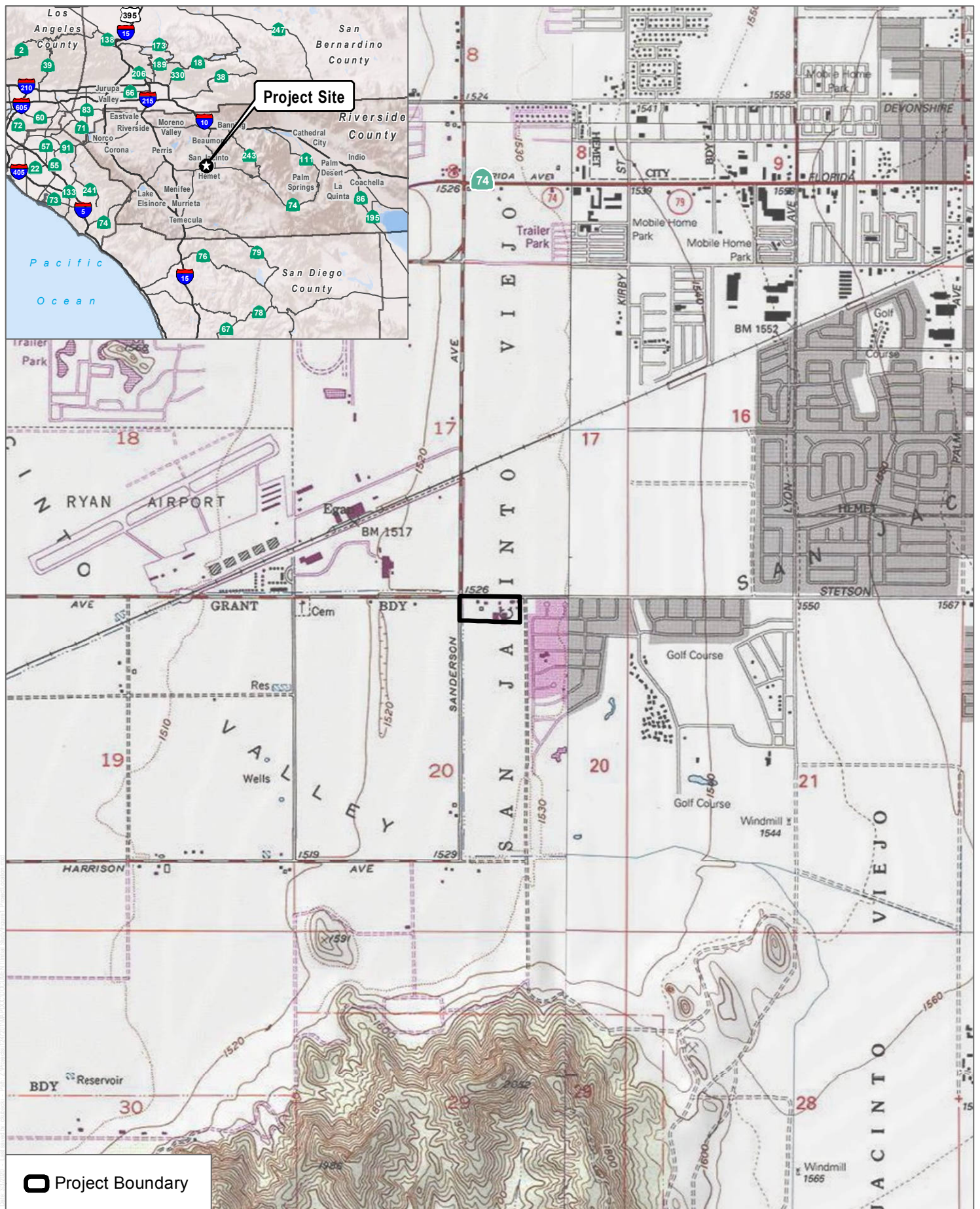
Subject: Cultural Resources Inventory for the Stetson Corner Project, City of Hemet, Riverside County, California

REFERENCES CITED

www.blm.gov. 2020 Accessed June 2020.

HistoricAerials.com. 2020. Accessed June 2020. <http://www.historicaerials.com/aerials>

SRSinc. 2018 Wiley, Anastasia and Kassie Sugimoto. 2018. Report of the Findings from a Record Search Conducted for Assessor's Parcel Number 460-150-014 and 460-150-015. On file with City of Hemet.



SOURCE: USGS 7.5-Minute Series Winchester and Hemet Quadrangles

APPENDICES

APPENDIX A (CONFIDENTIAL)

SCIC Records Search Results

APPENDIX B

NAHC and Tribal Correspondence

Table of Contents

SLF email request	2
Sacred Lands File Contact Form-Stetson Corner 12472	3
Figure 1. Location Map	4
NAHC email response	5
SLF Yes Stetson Corner Project 6.29.2020	6
Stetson Corner Project 6.29.2020	7
12472 Tribal Ltrs_merged	10
Records_Search_Map	32

Jessica Colston

From: David Faith
Sent: Monday, June 29, 2020 1:36 PM
To: nahc@nahc.ca.gov
Cc: Jessica Colston
Subject: SLF Search Request for Dudek PN 12472
Attachments: Figure 1. Location Map.pdf; Sacred Lands File Contact Form-Stetson Corner 12472.pdf

Hello NAHC Staff,
Please see the attached Sacred Lands File Search Request form and map.

Best Regards,

David Faith
Associate Archaeologist
605 Third Street
Encinitas, CA 92024
Mobile: 442-232-7313

Sacred Lands File & Native American Contacts List Request

NATIVE AMERICAN HERITAGE COMMISSION

1550 Harbor Blvd, Suite 100
West Sacramento, CA 95501
(916) 373-3710
(916) 373-5471 – Fax
nahc@nahc.ca.gov

Information Below is Required for a Sacred Lands File Search

Project: _____

County: _____

USGS Quadrangle

Name: _____

Township: _____ Range: _____ Section(s): _____

Company/Firm/Agency:

Contact Person: _____

Street Address: _____

City: _____ Zip: _____

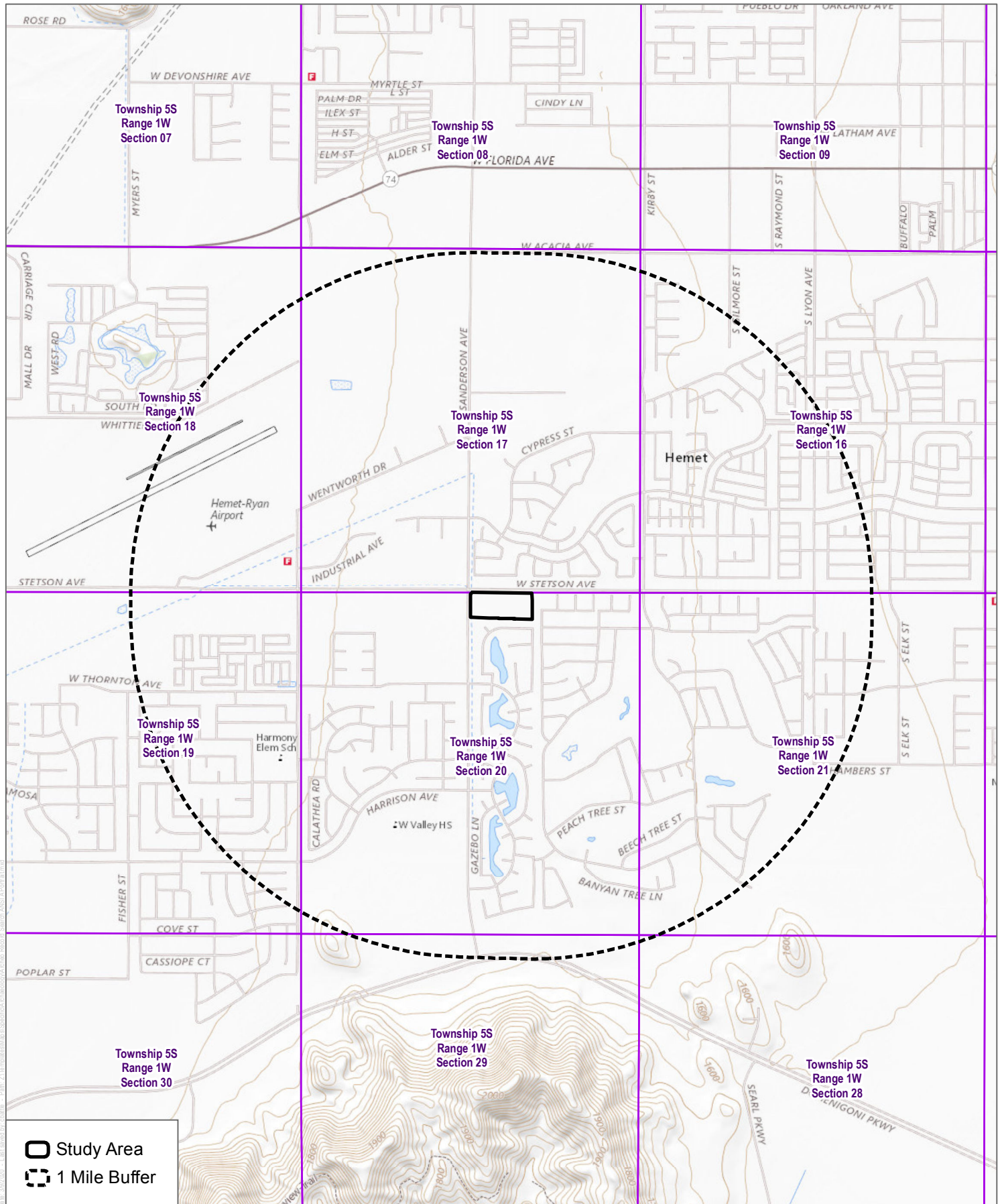
Phone: _____ Extension: _____

Fax: _____

Email: _____

Project Description:

____ Project Location Map is attached



SOURCE: USGS 7.5-Minute Series Hemet & Winchester Quadrangles



Figure 1. Location Map

Stetson Corners

Jessica Colston

From: Green, Andrew@NAHC <Andrew.Green@nahc.ca.gov>
Sent: Monday, June 29, 2020 4:15 PM
To: Jessica Colston
Cc: Paul Macarro
Subject: Stetson Corner Project
Attachments: SLF Yes Stetson Corner Project 6.29.2020.pdf; Stetson Corner Project 6.29.2020.pdf

Good Afternoon,

Attached is the response to the project referenced above. If you have any additional questions, please feel free to contact our office email at nahc@nahc.ca.gov.

Regards,

Andrew Green

Native American Heritage Commission
1550 Harbor Blvd., Suite 100
West Sacramento, CA 95691
Andrew.Green@nahc.ca.gov
Direct Line: (916) 573-1072
Office: (916) 373-3710

NATIVE AMERICAN HERITAGE COMMISSION

June 29, 2020

Jessica Colston
DudekVia Email to: jcolston@dudek.com**Re: Stetson Corner Project, Riverside County**

Dear Ms. Colston:

A record search of the Native American Heritage Commission (NAHC) Sacred Lands File (SLF) was completed for the information you have submitted for the above referenced project. The results were positive. Please contact the Pechanga Band of Luiseno Indians on the attached list for more information. Other sources of cultural resources should also be contacted for information regarding known and recorded sites.

Attached is a list of Native American tribes who may also have knowledge of cultural resources in the project area. This list should provide a starting place in locating areas of potential adverse impact within the proposed project area. I suggest you contact all of those indicated; if they cannot supply information, they might recommend others with specific knowledge. By contacting all those listed, your organization will be better able to respond to claims of failure to consult with the appropriate tribe. If a response has not been received within two weeks of notification, the Commission requests that you follow-up with a telephone call or email to ensure that the project information has been received.

If you receive notification of change of addresses and phone numbers from tribes, please notify me. With your assistance, we can assure that our lists contain current information.

If you have any questions or need additional information, please contact me at my email address: Andrew.Green@nahc.ca.gov.

Sincerely,

Andrew Green
Cultural Resources Analyst

Attachment

CHAIRPERSON
Laura Miranda
LuiseñoVICE CHAIRPERSON
Reginald Pagaling
ChumashSECRETARY
Merri Lopez-Keifer
LuiseñoPARLIAMENTARIAN
Russell Attebery
KarukCOMMISSIONER
Marshall McKay
WintunCOMMISSIONER
William Mungary
Paiute/White Mountain
ApacheCOMMISSIONER
Julie Tumamait-Stenslie
ChumashCOMMISSIONER
[Vacant]COMMISSIONER
[Vacant]EXECUTIVE SECRETARY
Christina Snider
Pomo**NAHC HEADQUARTERS**
1550 Harbor Boulevard
Suite 100
West Sacramento,
California 95691
(916) 373-3710
nahc@nahc.ca.gov
NAHC.ca.gov

**Native American Heritage Commission
Native American Contact List
Riverside County
6/29/2020**

Agua Caliente Band of Cahuilla Indians

Jeff Grubbe, Chairperson
5401 Dinah Shore Drive
Palm Springs, CA, 92264
Phone: (760) 699 - 6800
Fax: (760) 699-6919
Cahuilla

Los Coyotes Band of Cahuilla and Cupeño Indians

Shane Chapparosa, Chairperson
P.O. Box 189
Warner Springs, CA, 92086-0189
Phone: (760) 782 - 0711
Fax: (760) 782-0712
Cahuilla

Agua Caliente Band of Cahuilla Indians

Patricia Garcia-Plotkin, Director
5401 Dinah Shore Drive
Palm Springs, CA, 92264
Phone: (760) 699 - 6907
Fax: (760) 699-6924
ACBCI-THPO@aguacaliente.net
Cahuilla

Morongo Band of Mission Indians

Robert Martin, Chairperson
12700 Pumarra Road
Banning, CA, 92220
Phone: (951) 849 - 8807
Fax: (951) 922-8146
dtorres@morongo-nsn.gov
Cahuilla
Serrano

Augustine Band of Cahuilla Mission Indians

Amanda Vance, Chairperson
P.O. Box 846
Coachella, CA, 92236
Phone: (760) 398 - 4722
Fax: (760) 369-7161
hhaines@augustinetribe.com
Cahuilla

Morongo Band of Mission Indians

Denisa Torres, Cultural Resources Manager
12700 Pumarra Road
Banning, CA, 92220
Phone: (951) 849 - 8807
Fax: (951) 922-8146
dtorres@morongo-nsn.gov
Cahuilla
Serrano

Cabazon Band of Mission Indians

Doug Welmas, Chairperson
84-245 Indio Springs Parkway
Indio, CA, 92203
Phone: (760) 342 - 2593
Fax: (760) 347-7880
jstapp@cabazonindians-nsn.gov
Cahuilla

Pala Band of Mission Indians

Shasta Gaughen, Tribal Historic Preservation Officer
PMB 50, 35008 Pala Temecula Rd.
Pala, CA, 92059
Phone: (760) 891 - 3515
Fax: (760) 742-3189
sgaughen@palatribe.com
Cupeno
Luiseno

Cahuilla Band of Indians

Daniel Salgado, Chairperson
52701 U.S. Highway 371
Anza, CA, 92539
Phone: (951) 763 - 5549
Fax: (951) 763-2808
Chairman@cahuilla.net
Cahuilla

Pechanga Band of Luiseno Indians

Mark Macarro, Chairperson
P.O. Box 1477
Temecula, CA, 92593
Phone: (951) 770 - 6000
Fax: (951) 695-1778
epreston@pechanga-nsn.gov
Luiseno

This list is current only as of the date of this document. Distribution of this list does not relieve any person of statutory responsibility as defined in Section 7050.5 of the Health and Safety Code, Section 5097.94 of the Public Resource Section 5097.98 of the Public Resources Code.

This list is only applicable for contacting local Native Americans with regard to cultural resources assessment for the proposed Stetson Corner Project, Riverside County.

**Native American Heritage Commission
Native American Contact List
Riverside County
6/29/2020**

***Pechanga Band of Luiseno
Indians***

Paul Macarro, Cultural Resources
Coordinator
P.O. Box 1477 Luiseno
Temecula, CA, 92593
Phone: (951) 770 - 6306
Fax: (951) 506-9491
pmacarro@pechanga-nsn.gov

***Quechan Tribe of the Fort Yuma
Reservation***

Jill McCormick, Historic
Preservation Officer
P.O. Box 1899 Quechan
Yuma, AZ, 85366
Phone: (760) 572 - 2423
historicpreservation@quechantrib
e.com

***Quechan Tribe of the Fort Yuma
Reservation***

Manfred Scott, Acting Chairman
Kw'ts'an Cultural Committee
P.O. Box 1899 Quechan
Yuma, AZ, 85366
Phone: (928) 750 - 2516
scottmanfred@yahoo.com

Ramona Band of Cahuilla

John Gomez, Environmental
Coordinator
P. O. Box 391670 Cahuilla
Anza, CA, 92539
Phone: (951) 763 - 4105
Fax: (951) 763-4325
jgomez@ramona-nsn.gov

Ramona Band of Cahuilla

Joseph Hamilton, Chairperson
P.O. Box 391670 Cahuilla
Anza, CA, 92539
Phone: (951) 763 - 4105
Fax: (951) 763-4325
admin@ramona-nsn.gov

Rincon Band of Luiseno Indians

Bo Mazzetti, Chairperson
One Government Center Lane Luiseno
Valley Center, CA, 92082
Phone: (760) 749 - 1051
Fax: (760) 749-5144
bomazzetti@aol.com

Rincon Band of Luiseno Indians

Cheryl Madrigal, Tribal Historic
Preservation Officer
One Government Center Lane Luiseno
Valley Center, CA, 92082
Phone: (760) 297 - 2635
crd@rincon-nsn.gov

***Santa Rosa Band of Cahuilla
Indians***

Lovina Redner, Tribal Chair
P.O. Box 391820 Cahuilla
Anza, CA, 92539
Phone: (951) 659 - 2700
Fax: (951) 659-2228
Isaul@santarosacahuilla-nsn.gov

***Soboba Band of Luiseno
Indians***

Joseph Ontiveros, Cultural
Resource Department
P.O. BOX 487 Cahuilla
San Jacinto, CA, 92581
Phone: (951) 663 - 5279
Fax: (951) 654-4198
jontiveros@soboba-nsn.gov

***Soboba Band of Luiseno
Indians***

Scott Cozart, Chairperson
P. O. Box 487 Cahuilla
San Jacinto, CA, 92583
Phone: (951) 654 - 2765
Fax: (951) 654-4198
jontiveros@soboba-nsn.gov

This list is current only as of the date of this document. Distribution of this list does not relieve any person of statutory responsibility as defined in Section 7050.5 of the Health and Safety Code, Section 5097.94 of the Public Resource Section 5097.98 of the Public Resources Code.

This list is only applicable for contacting local Native Americans with regard to cultural resources assessment for the proposed Stetson Corner Project, Riverside County.

**Native American Heritage Commission
Native American Contact List
Riverside County
6/29/2020**

***Torres-Martinez Desert Cahuilla
Indians***

Michael Mirelez, Cultural
Resource Coordinator
P.O. Box 1160
Thermal, CA, 92274
Phone: (760) 399 - 0022
Fax: (760) 397-8146
mmirelez@tmdci.org

Cahuilla

This list is current only as of the date of this document. Distribution of this list does not relieve any person of statutory responsibility as defined in Section 7050.5 of the Health and Safety Code, Section 5097.94 of the Public Resource Section 5097.98 of the Public Resources Code.

This list is only applicable for contacting local Native Americans with regard to cultural resources assessment for the proposed Stetson Corner Project, Riverside County.

June 30, 2020

Mr. Shane Chapparosa, Chairperson
Los Coyotes Band of Cahuilla and Cupeno Indians
P.O. Box 189
Warner Springs, CA 92086

Subject: Information Request for the Stetson Corner Project, Riverside County, California

Dear Mr. Chapparosa,

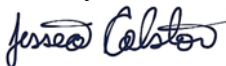
Dudek is contracted to prepare an Environmental Impact Report for the Stetson Corner Project located in the City of Hemet, California. The currently proposed project entails reorganizing the site to relocate the existing McCrometer Corp. parking lot, as well as to construct a 3,000 square-foot convenience store, a 3,500 square-foot car wash, a 2,800 square-foot drive through restaurant, and a twelve-bay gas station. The off-site impacts of the project include adjustments to the sidewalk configuration and driveway accesses.

The Project APE is located in Section 20 of Township 5 South and Range 1 West on the Hemet and Winchester, California 7.5-minute series United States Geological Survey quadrangle. The Project's area of potential effects (APE) consists of the approximately 11.7 acres parcel.

The Native American Heritage Commission conducted a Sacred Lands file search, which yielded positive results. Native American cultural resources were identified within a one-mile distance of the proposed project area. I am writing as part of the information gathering process in order to find out if you, or your tribal community, have any knowledge of cultural resources or places that may be impacted by the proposed project.

If you have any information or concerns pertaining to such information, please contact me by phone or email.

Respectfully,



Jessica Colston, B.A.
Archaeologist
Phone: (760) 815-6642
Email: jcolston@dudek.com

Attachments: Figure 1. Project location map.

June 30, 2020

Mr. Scott Cozart, Chairperson
Soboba Band of Luiseno Indians
P.O. Box 487
San Jacinto, CA 92583

Subject: Information Request for the Stetson Corner Project, Riverside County, California

Dear Mr. Cozart,

Dudek is contracted to prepare an Environmental Impact Report for the Stetson Corner Project located in the City of Hemet, California. The currently proposed project entails reorganizing the site to relocate the existing McCrometer Corp. parking lot, as well as to construct a 3,000 square-foot convenience store, a 3,500 square-foot car wash, a 2,800 square-foot drive through restaurant, and a twelve-bay gas station. The off-site impacts of the project include adjustments to the sidewalk configuration and driveway accesses.

The Project APE is located in Section 20 of Township 5 South and Range 1 West on the Hemet and Winchester, California 7.5-minute series United States Geological Survey quadrangle. The Project's area of potential effects (APE) consists of the approximately 11.7 acres parcel.

The Native American Heritage Commission conducted a Sacred Lands file search, which yielded positive results. Native American cultural resources were identified within a one-mile distance of the proposed project area. I am writing as part of the information gathering process in order to find out if you, or your tribal community, have any knowledge of cultural resources or places that may be impacted by the proposed project.

If you have any information or concerns pertaining to such information, please contact me by phone or email.

Respectfully,



Jessica Colston, B.A.
Archaeologist
Phone: (760) 815-6642
Email: jcolston@dudek.com

Attachments: Figure 1. Project location map.

June 30, 2020

Ms. Patricia Garcia-Plotkin, Director
Agua Caliente Band of Cahuilla Indians
5401 Dinah Shore Drive
Palm Springs, CA 92264

Subject: Information Request for the Stetson Corner Project, Riverside County, California

Dear Ms. Garcia-Plotkin,

Dudek is contracted to prepare an Environmental Impact Report for the Stetson Corner Project located in the City of Hemet, California. The currently proposed project entails reorganizing the site to relocate the existing McCrometer Corp. parking lot, as well as to construct a 3,000 square-foot convenience store, a 3,500 square-foot car wash, a 2,800 square-foot drive through restaurant, and a twelve-bay gas station. The off-site impacts of the project include adjustments to the sidewalk configuration and driveway accesses.

The Project APE is located in Section 20 of Township 5 South and Range 1 West on the Hemet and Winchester, California 7.5-minute series United States Geological Survey quadrangle. The Project's area of potential effects (APE) consists of the approximately 11.7 acres parcel.

The Native American Heritage Commission conducted a Sacred Lands file search, which yielded positive results. Native American cultural resources were identified within a one-mile distance of the proposed project area. I am writing as part of the information gathering process in order to find out if you, or your tribal community, have any knowledge of cultural resources or places that may be impacted by the proposed project.

If you have any information or concerns pertaining to such information, please contact me by phone or email.

Respectfully,



Jessica Colston, B.A.
Archaeologist
Phone: (760) 815-6642
Email: jcolston@dudek.com

Attachments: Figure 1. Project location map.

June 30, 2020

Ms. Shasta Gaughen, Tribal Historic Preservation Officer
Pala Band of Mission Indians
35008 Pala Temecula Rd.
Pala, CA 92059

Subject: Information Request for the Stetson Corner Project, Riverside County, California

Dear Ms. Gaughen,

Dudek is contracted to prepare an Environmental Impact Report for the Stetson Corner Project located in the City of Hemet, California. The currently proposed project entails reorganizing the site to relocate the existing McCrometer Corp. parking lot, as well as to construct a 3,000 square-foot convenience store, a 3,500 square-foot car wash, a 2,800 square-foot drive through restaurant, and a twelve-bay gas station. The off-site impacts of the project include adjustments to the sidewalk configuration and driveway accesses.

The Project APE is located in Section 20 of Township 5 South and Range 1 West on the Hemet and Winchester, California 7.5-minute series United States Geological Survey quadrangle. The Project's area of potential effects (APE) consists of the approximately 11.7 acres parcel.

The Native American Heritage Commission conducted a Sacred Lands file search, which yielded positive results. Native American cultural resources were identified within a one-mile distance of the proposed project area. I am writing as part of the information gathering process in order to find out if you, or your tribal community, have any knowledge of cultural resources or places that may be impacted by the proposed project.

If you have any information or concerns pertaining to such information, please contact me by phone or email.

Respectfully,



Jessica Colston, B.A.
Archaeologist
Phone: (760) 815-6642
Email: jcolston@dudek.com

Attachments: Figure 1. Project location map.

June 30, 2020

Mr. John Gomez, Environmental Coordinator
Ramona Band of Cahuilla Mission Indians
P.O. Box 391670
Anza, CA 92539

Subject: Information Request for the Stetson Corner Project, Riverside County, California

Dear Mr. Gomez,

Dudek is contracted to prepare an Environmental Impact Report for the Stetson Corner Project located in the City of Hemet, California. The currently proposed project entails reorganizing the site to relocate the existing McCrometer Corp. parking lot, as well as to construct a 3,000 square-foot convenience store, a 3,500 square-foot car wash, a 2,800 square-foot drive through restaurant, and a twelve-bay gas station. The off-site impacts of the project include adjustments to the sidewalk configuration and driveway accesses.

The Project APE is located in Section 20 of Township 5 South and Range 1 West on the Hemet and Winchester, California 7.5-minute series United States Geological Survey quadrangle. The Project's area of potential effects (APE) consists of the approximately 11.7 acres parcel.

The Native American Heritage Commission conducted a Sacred Lands file search, which yielded positive results. Native American cultural resources were identified within a one-mile distance of the proposed project area. I am writing as part of the information gathering process in order to find out if you, or your tribal community, have any knowledge of cultural resources or places that may be impacted by the proposed project.

If you have any information or concerns pertaining to such information, please contact me by phone or email.

Respectfully,



Jessica Colston, B.A.
Archaeologist
Phone: (760) 815-6642
Email: jcolston@dudek.com

Attachments: Figure 1. Project location map.

June 30, 2020

Mr. Jeff Grubbe, Chairperson
Agua Caliente Band of Cahuilla Indians
5401 Dinah Shore Drive
Palm Springs, CA 92264

Subject: Information Request for the Stetson Corner Project, Riverside County, California

Dear Mr. Grubbe,

Dudek is contracted to prepare an Environmental Impact Report for the Stetson Corner Project located in the City of Hemet, California. The currently proposed project entails reorganizing the site to relocate the existing McCrometer Corp. parking lot, as well as to construct a 3,000 square-foot convenience store, a 3,500 square-foot car wash, a 2,800 square-foot drive through restaurant, and a twelve-bay gas station. The off-site impacts of the project include adjustments to the sidewalk configuration and driveway accesses.

The Project APE is located in Section 20 of Township 5 South and Range 1 West on the Hemet and Winchester, California 7.5-minute series United States Geological Survey quadrangle. The Project's area of potential effects (APE) consists of the approximately 11.7 acres parcel.

The Native American Heritage Commission conducted a Sacred Lands file search, which yielded positive results. Native American cultural resources were identified within a one-mile distance of the proposed project area. I am writing as part of the information gathering process in order to find out if you, or your tribal community, have any knowledge of cultural resources or places that may be impacted by the proposed project.

If you have any information or concerns pertaining to such information, please contact me by phone or email.

Respectfully,



Jessica Colston, B.A.
Archaeologist
Phone: (760) 815-6642
Email: jcolston@dudek.com

Attachments: Figure 1. Project location map.

June 30, 2020

Mr. Joseph Hamilton, Chairperson
Ramona Band of Cahuilla
P.O. Box 391670
Anza, CA 92539

Subject: Information Request for the Stetson Corner Project, Riverside County, California

Dear Mr. Hamilton,

Dudek is contracted to prepare an Environmental Impact Report for the Stetson Corner Project located in the City of Hemet, California. The currently proposed project entails reorganizing the site to relocate the existing McCrometer Corp. parking lot, as well as to construct a 3,000 square-foot convenience store, a 3,500 square-foot car wash, a 2,800 square-foot drive through restaurant, and a twelve-bay gas station. The off-site impacts of the project include adjustments to the sidewalk configuration and driveway accesses.

The Project APE is located in Section 20 of Township 5 South and Range 1 West on the Hemet and Winchester, California 7.5-minute series United States Geological Survey quadrangle. The Project's area of potential effects (APE) consists of the approximately 11.7 acres parcel.

The Native American Heritage Commission conducted a Sacred Lands file search, which yielded positive results. Native American cultural resources were identified within a one-mile distance of the proposed project area. I am writing as part of the information gathering process in order to find out if you, or your tribal community, have any knowledge of cultural resources or places that may be impacted by the proposed project.

If you have any information or concerns pertaining to such information, please contact me by phone or email.

Respectfully,



Jessica Colston, B.A.
Archaeologist
Phone: (760) 815-6642
Email: jcolston@dudek.com

Attachments: Figure 1. Project location map.

June 30, 2020

Mr. Mark Macarro, Chairperson
Pechanga Band of Mission Indians
P.O. Box 1477
Temecula, CA 92593

Subject: Information Request for the Stetson Corner Project, Riverside County, California

Dear Mr. Macarro,

Dudek is contracted to prepare an Environmental Impact Report for the Stetson Corner Project located in the City of Hemet, California. The currently proposed project entails reorganizing the site to relocate the existing McCrometer Corp. parking lot, as well as to construct a 3,000 square-foot convenience store, a 3,500 square-foot car wash, a 2,800 square-foot drive through restaurant, and a twelve-bay gas station. The off-site impacts of the project include adjustments to the sidewalk configuration and driveway accesses.

The Project APE is located in Section 20 of Township 5 South and Range 1 West on the Hemet and Winchester, California 7.5-minute series United States Geological Survey quadrangle. The Project's area of potential effects (APE) consists of the approximately 11.7 acres parcel.

The Native American Heritage Commission conducted a Sacred Lands file search, which yielded positive results. Native American cultural resources were identified within a one-mile distance of the proposed project area. I am writing as part of the information gathering process in order to find out if you, or your tribal community, have any knowledge of cultural resources or places that may be impacted by the proposed project.

If you have any information or concerns pertaining to such information, please contact me by phone or email.

Respectfully,



Jessica Colston, B.A.
Archaeologist
Phone: (760) 815-6642
Email: jcolston@dudek.com

Attachments: Figure 1. Project location map.

June 30, 2020

Mr. Paul Macarro, Cultural Resources Manager
Pechanga Band of Mission Indians
P.O. Box 1477
Temecula, CA 92593

Subject: Information Request for the Stetson Corner Project, Riverside County, California

Dear Mr. Macarro,

Dudek is contracted to prepare an Environmental Impact Report for the Stetson Corner Project located in the City of Hemet, California. The currently proposed project entails reorganizing the site to relocate the existing McCrometer Corp. parking lot, as well as to construct a 3,000 square-foot convenience store, a 3,500 square-foot car wash, a 2,800 square-foot drive through restaurant, and a twelve-bay gas station. The off-site impacts of the project include adjustments to the sidewalk configuration and driveway accesses.

The Project APE is located in Section 20 of Township 5 South and Range 1 West on the Hemet and Winchester, California 7.5-minute series United States Geological Survey quadrangle. The Project's area of potential effects (APE) consists of the approximately 11.7 acres parcel.

The Native American Heritage Commission conducted a Sacred Lands file search, which yielded positive results. Native American cultural resources were identified within a one-mile distance of the proposed project area. I am writing as part of the information gathering process in order to find out if you, or your tribal community, have any knowledge of cultural resources or places that may be impacted by the proposed project.

If you have any information or concerns pertaining to such information, please contact me by phone or email.

Respectfully,



Jessica Colston, B.A.
Archaeologist
Phone: (760) 815-6642
Email: jcolston@dudek.com

Attachments: Figure 1. Project location map.

June 30, 2020

Ms. Cheryl Madrigal, Tribal Historic Preservation Officer
Rincon Band of Mission Indians
One Government Center Lane
Valley Center, CA 92082

Subject: Information Request for the Stetson Corner Project, Riverside County, California

Dear Ms. Madrigal,

Dudek is contracted to prepare an Environmental Impact Report for the Stetson Corner Project located in the City of Hemet, California. The currently proposed project entails reorganizing the site to relocate the existing McCrometer Corp. parking lot, as well as to construct a 3,000 square-foot convenience store, a 3,500 square-foot car wash, a 2,800 square-foot drive through restaurant, and a twelve-bay gas station. The off-site impacts of the project include adjustments to the sidewalk configuration and driveway accesses.

The Project APE is located in Section 20 of Township 5 South and Range 1 West on the Hemet and Winchester, California 7.5-minute series United States Geological Survey quadrangle. The Project's area of potential effects (APE) consists of the approximately 11.7 acres parcel.

The Native American Heritage Commission conducted a Sacred Lands file search, which yielded positive results. Native American cultural resources were identified within a one-mile distance of the proposed project area. I am writing as part of the information gathering process in order to find out if you, or your tribal community, have any knowledge of cultural resources or places that may be impacted by the proposed project.

If you have any information or concerns pertaining to such information, please contact me by phone or email.

Respectfully,



Jessica Colston, B.A.
Archaeologist
Phone: (760) 815-6642
Email: jcolston@dudek.com

Attachments: Figure 1. Project location map.

June 30, 2020

Mr. Robert Martin, Chairperson
Morongo Band of Mission Indians
12700 Pumarra Road
Banning, CA 92220

Subject: Information Request for the Stetson Corner Project, Riverside County, California

Dear Mr. Martin,

Dudek is contracted to prepare an Environmental Impact Report for the Stetson Corner Project located in the City of Hemet, California. The currently proposed project entails reorganizing the site to relocate the existing McCrometer Corp. parking lot, as well as to construct a 3,000 square-foot convenience store, a 3,500 square-foot car wash, a 2,800 square-foot drive through restaurant, and a twelve-bay gas station. The off-site impacts of the project include adjustments to the sidewalk configuration and driveway accesses.

The Project APE is located in Section 20 of Township 5 South and Range 1 West on the Hemet and Winchester, California 7.5-minute series United States Geological Survey quadrangle. The Project's area of potential effects (APE) consists of the approximately 11.7 acres parcel.

The Native American Heritage Commission conducted a Sacred Lands file search, which yielded positive results. Native American cultural resources were identified within a one-mile distance of the proposed project area. I am writing as part of the information gathering process in order to find out if you, or your tribal community, have any knowledge of cultural resources or places that may be impacted by the proposed project.

If you have any information or concerns pertaining to such information, please contact me by phone or email.

Respectfully,



Jessica Colston, B.A.
Archaeologist
Phone: (760) 815-6642
Email: jcolston@dudek.com

Attachments: Figure 1. Project location map.

June 30, 2020

Mr. Bo Mazzetti, Tribal Chairman
Rincon Band of Mission Indians
1 W. Tribal Road
Valley Center, CA 92082

Subject: Information Request for the Stetson Corner Project, Riverside County, California

Dear Mr. Mazzetti,

Dudek is contracted to prepare an Environmental Impact Report for the Stetson Corner Project located in the City of Hemet, California. The currently proposed project entails reorganizing the site to relocate the existing McCrometer Corp. parking lot, as well as to construct a 3,000 square-foot convenience store, a 3,500 square-foot car wash, a 2,800 square-foot drive through restaurant, and a twelve-bay gas station. The off-site impacts of the project include adjustments to the sidewalk configuration and driveway accesses.

The Project APE is located in Section 20 of Township 5 South and Range 1 West on the Hemet and Winchester, California 7.5-minute series United States Geological Survey quadrangle. The Project's area of potential effects (APE) consists of the approximately 11.7 acres parcel.

The Native American Heritage Commission conducted a Sacred Lands file search, which yielded positive results. Native American cultural resources were identified within a one-mile distance of the proposed project area. I am writing as part of the information gathering process in order to find out if you, or your tribal community, have any knowledge of cultural resources or places that may be impacted by the proposed project.

If you have any information or concerns pertaining to such information, please contact me by phone or email.

Respectfully,



Jessica Colston, B.A.
Archaeologist
Phone: (760) 815-6642
Email: jcolston@dudek.com

Attachments: Figure 1. Project location map.

June 30, 2020

Ms. Jill McCormick, Historic Preservation Officer
Quechan Tribe of the Fort Yuma Reservation
P.O. Box 1899
Yuma, AZ 85366

Subject: Information Request for the Stetson Corner Project, Riverside County, California

Dear Ms. McCormick,

Dudek is contracted to prepare an Environmental Impact Report for the Stetson Corner Project located in the City of Hemet, California. The currently proposed project entails reorganizing the site to relocate the existing McCrometer Corp. parking lot, as well as to construct a 3,000 square-foot convenience store, a 3,500 square-foot car wash, a 2,800 square-foot drive through restaurant, and a twelve-bay gas station. The off-site impacts of the project include adjustments to the sidewalk configuration and driveway accesses.

The Project APE is located in Section 20 of Township 5 South and Range 1 West on the Hemet and Winchester, California 7.5-minute series United States Geological Survey quadrangle. The Project's area of potential effects (APE) consists of the approximately 11.7 acres parcel.

The Native American Heritage Commission conducted a Sacred Lands file search, which yielded positive results. Native American cultural resources were identified within a one-mile distance of the proposed project area. I am writing as part of the information gathering process in order to find out if you, or your tribal community, have any knowledge of cultural resources or places that may be impacted by the proposed project.

If you have any information or concerns pertaining to such information, please contact me by phone or email.

Respectfully,



Jessica Colston, B.A.
Archaeologist
Phone: (760) 815-6642
Email: jcolston@dudek.com

Attachments: Figure 1. Project location map.

June 30, 2020

Mr. Michael Mirelez, Cultural Resources Coordinator
Torres-Martinez Desert Cahuilla Indians
P.O. Box 1160
Thermal, CA 92274

Subject: Information Request for the Stetson Corner Project, Riverside County, California

Dear Mr. Mirelez,

Dudek is contracted to prepare an Environmental Impact Report for the Stetson Corner Project located in the City of Hemet, California. The currently proposed project entails reorganizing the site to relocate the existing McCrometer Corp. parking lot, as well as to construct a 3,000 square-foot convenience store, a 3,500 square-foot car wash, a 2,800 square-foot drive through restaurant, and a twelve-bay gas station. The off-site impacts of the project include adjustments to the sidewalk configuration and driveway accesses.

The Project APE is located in Section 20 of Township 5 South and Range 1 West on the Hemet and Winchester, California 7.5-minute series United States Geological Survey quadrangle. The Project's area of potential effects (APE) consists of the approximately 11.7 acres parcel.

The Native American Heritage Commission conducted a Sacred Lands file search, which yielded positive results. Native American cultural resources were identified within a one-mile distance of the proposed project area. I am writing as part of the information gathering process in order to find out if you, or your tribal community, have any knowledge of cultural resources or places that may be impacted by the proposed project.

If you have any information or concerns pertaining to such information, please contact me by phone or email.

Respectfully,



Jessica Colston, B.A.
Archaeologist
Phone: (760) 815-6642
Email: jcolston@dudek.com

Attachments: Figure 1. Project location map.

June 30, 2020

Mr. Joseph Ontiveros, Cultural Resource Department
Soboba Band of Luiseno Indians
P.O. Box 487
San Jacinto, CA 92581

Subject: Information Request for the Stetson Corner Project, Riverside County, California

Dear Mr. Ontiveros,

Dudek is contracted to prepare an Environmental Impact Report for the Stetson Corner Project located in the City of Hemet, California. The currently proposed project entails reorganizing the site to relocate the existing McCrometer Corp. parking lot, as well as to construct a 3,000 square-foot convenience store, a 3,500 square-foot car wash, a 2,800 square-foot drive through restaurant, and a twelve-bay gas station. The off-site impacts of the project include adjustments to the sidewalk configuration and driveway accesses.

The Project APE is located in Section 20 of Township 5 South and Range 1 West on the Hemet and Winchester, California 7.5-minute series United States Geological Survey quadrangle. The Project's area of potential effects (APE) consists of the approximately 11.7 acres parcel.

The Native American Heritage Commission conducted a Sacred Lands file search, which yielded positive results. Native American cultural resources were identified within a one-mile distance of the proposed project area. I am writing as part of the information gathering process in order to find out if you, or your tribal community, have any knowledge of cultural resources or places that may be impacted by the proposed project.

If you have any information or concerns pertaining to such information, please contact me by phone or email.

Respectfully,



Jessica Colston, B.A.
Archaeologist
Phone: (760) 815-6642
Email: jcolston@dudek.com

Attachments: Figure 1. Project location map.

June 30, 2020

Ms. Lovina Redner, Tribal Chair
Santa Rosa Band of Cahuilla Indians
P.O. Box 391820
Anza, CA 92539

Subject: Information Request for the Stetson Corner Project, Riverside County, California

Dear Ms. Redner,

Dudek is contracted to prepare an Environmental Impact Report for the Stetson Corner Project located in the City of Hemet, California. The currently proposed project entails reorganizing the site to relocate the existing McCrometer Corp. parking lot, as well as to construct a 3,000 square-foot convenience store, a 3,500 square-foot car wash, a 2,800 square-foot drive through restaurant, and a twelve-bay gas station. The off-site impacts of the project include adjustments to the sidewalk configuration and driveway accesses.

The Project APE is located in Section 20 of Township 5 South and Range 1 West on the Hemet and Winchester, California 7.5-minute series United States Geological Survey quadrangle. The Project's area of potential effects (APE) consists of the approximately 11.7 acres parcel.

The Native American Heritage Commission conducted a Sacred Lands file search, which yielded positive results. Native American cultural resources were identified within a one-mile distance of the proposed project area. I am writing as part of the information gathering process in order to find out if you, or your tribal community, have any knowledge of cultural resources or places that may be impacted by the proposed project.

If you have any information or concerns pertaining to such information, please contact me by phone or email.

Respectfully,



Jessica Colston, B.A.
Archaeologist
Phone: (760) 815-6642
Email: jcolston@dudek.com

Attachments: Figure 1. Project location map.

June 30, 2020

Mr. Daniel Salgado, Chairperson
Cahuilla Band of Indians
52701 U.S. Highway 371
Anza, CA 92539

Subject: Information Request for the Stetson Corner Project, Riverside County, California

Dear Mr. Salgado,

Dudek is contracted to prepare an Environmental Impact Report for the Stetson Corner Project located in the City of Hemet, California. The currently proposed project entails reorganizing the site to relocate the existing McCrometer Corp. parking lot, as well as to construct a 3,000 square-foot convenience store, a 3,500 square-foot car wash, a 2,800 square-foot drive through restaurant, and a twelve-bay gas station. The off-site impacts of the project include adjustments to the sidewalk configuration and driveway accesses.

The Project APE is located in Section 20 of Township 5 South and Range 1 West on the Hemet and Winchester, California 7.5-minute series United States Geological Survey quadrangle. The Project's area of potential effects (APE) consists of the approximately 11.7 acres parcel.

The Native American Heritage Commission conducted a Sacred Lands file search, which yielded positive results. Native American cultural resources were identified within a one-mile distance of the proposed project area. I am writing as part of the information gathering process in order to find out if you, or your tribal community, have any knowledge of cultural resources or places that may be impacted by the proposed project.

If you have any information or concerns pertaining to such information, please contact me by phone or email.

Respectfully,



Jessica Colston, B.A.
Archaeologist
Phone: (760) 815-6642
Email: jcolston@dudek.com

Attachments: Figure 1. Project location map.

June 30, 2020

Mr. Manfred Scott, Acting Chairman
Quechan Tribe of the Fort Yuma Reservation
P.O. Box 1899
Yuma, AZ 85366

Subject: Information Request for the Stetson Corner Project, Riverside County, California

Dear Mr. Scott,

Dudek is contracted to prepare an Environmental Impact Report for the Stetson Corner Project located in the City of Hemet, California. The currently proposed project entails reorganizing the site to relocate the existing McCrometer Corp. parking lot, as well as to construct a 3,000 square-foot convenience store, a 3,500 square-foot car wash, a 2,800 square-foot drive through restaurant, and a twelve-bay gas station. The off-site impacts of the project include adjustments to the sidewalk configuration and driveway accesses.

The Project APE is located in Section 20 of Township 5 South and Range 1 West on the Hemet and Winchester, California 7.5-minute series United States Geological Survey quadrangle. The Project's area of potential effects (APE) consists of the approximately 11.7 acres parcel.

The Native American Heritage Commission conducted a Sacred Lands file search, which yielded positive results. Native American cultural resources were identified within a one-mile distance of the proposed project area. I am writing as part of the information gathering process in order to find out if you, or your tribal community, have any knowledge of cultural resources or places that may be impacted by the proposed project.

If you have any information or concerns pertaining to such information, please contact me by phone or email.

Respectfully,



Jessica Colston, B.A.
Archaeologist
Phone: (760) 815-6642
Email: jcolston@dudek.com

Attachments: Figure 1. Project location map.

June 30, 2020

Ms. Denisa Torres, Cultural Resources Manager
Morongo Band of Mission Indians
12700 Pumarra Road
Banning, CA 92220

Subject: Information Request for the Stetson Corner Project, Riverside County, California

Dear Ms. Torres,

Dudek is contracted to prepare an Environmental Impact Report for the Stetson Corner Project located in the City of Hemet, California. The currently proposed project entails reorganizing the site to relocate the existing McCrometer Corp. parking lot, as well as to construct a 3,000 square-foot convenience store, a 3,500 square-foot car wash, a 2,800 square-foot drive through restaurant, and a twelve-bay gas station. The off-site impacts of the project include adjustments to the sidewalk configuration and driveway accesses.

The Project APE is located in Section 20 of Township 5 South and Range 1 West on the Hemet and Winchester, California 7.5-minute series United States Geological Survey quadrangle. The Project's area of potential effects (APE) consists of the approximately 11.7 acres parcel.

The Native American Heritage Commission conducted a Sacred Lands file search, which yielded positive results. Native American cultural resources were identified within a one-mile distance of the proposed project area. I am writing as part of the information gathering process in order to find out if you, or your tribal community, have any knowledge of cultural resources or places that may be impacted by the proposed project.

If you have any information or concerns pertaining to such information, please contact me by phone or email.

Respectfully,



Jessica Colston, B.A.
Archaeologist
Phone: (760) 815-6642
Email: jcolston@dudek.com

Attachments: Figure 1. Project location map.

June 30, 2020

Ms. Amanda Vance, Chairperson
Augustine Band of Cahuilla Mission Indians
P.O. Box 846
Coachella, CA 92236

Subject: Information Request for the Stetson Corner Project, Riverside County, California

Dear Ms. Vance,

Dudek is contracted to prepare an Environmental Impact Report for the Stetson Corner Project located in the City of Hemet, California. The currently proposed project entails reorganizing the site to relocate the existing McCrometer Corp. parking lot, as well as to construct a 3,000 square-foot convenience store, a 3,500 square-foot car wash, a 2,800 square-foot drive through restaurant, and a twelve-bay gas station. The off-site impacts of the project include adjustments to the sidewalk configuration and driveway accesses.

The Project APE is located in Section 20 of Township 5 South and Range 1 West on the Hemet and Winchester, California 7.5-minute series United States Geological Survey quadrangle. The Project's area of potential effects (APE) consists of the approximately 11.7 acres parcel.

The Native American Heritage Commission conducted a Sacred Lands file search, which yielded positive results. Native American cultural resources were identified within a one-mile distance of the proposed project area. I am writing as part of the information gathering process in order to find out if you, or your tribal community, have any knowledge of cultural resources or places that may be impacted by the proposed project.

If you have any information or concerns pertaining to such information, please contact me by phone or email.

Respectfully,



Jessica Colston, B.A.
Archaeologist
Phone: (760) 815-6642
Email: jcolston@dudek.com

Attachments: Figure 1. Project location map.

June 30, 2020

Mr. Doug Welmas, Chairperson
Cabazon Band of Mission Indians
84-245 Indio Springs
Indio, CA 92203

Subject: Information Request for the Stetson Corner Project, Riverside County, California

Dear Mr. Welmas,

Dudek is contracted to prepare an Environmental Impact Report for the Stetson Corner Project located in the City of Hemet, California. The currently proposed project entails reorganizing the site to relocate the existing McCrometer Corp. parking lot, as well as to construct a 3,000 square-foot convenience store, a 3,500 square-foot car wash, a 2,800 square-foot drive through restaurant, and a twelve-bay gas station. The off-site impacts of the project include adjustments to the sidewalk configuration and driveway accesses.

The Project APE is located in Section 20 of Township 5 South and Range 1 West on the Hemet and Winchester, California 7.5-minute series United States Geological Survey quadrangle. The Project's area of potential effects (APE) consists of the approximately 11.7 acres parcel.

The Native American Heritage Commission conducted a Sacred Lands file search, which yielded positive results. Native American cultural resources were identified within a one-mile distance of the proposed project area. I am writing as part of the information gathering process in order to find out if you, or your tribal community, have any knowledge of cultural resources or places that may be impacted by the proposed project.

If you have any information or concerns pertaining to such information, please contact me by phone or email.

Respectfully,

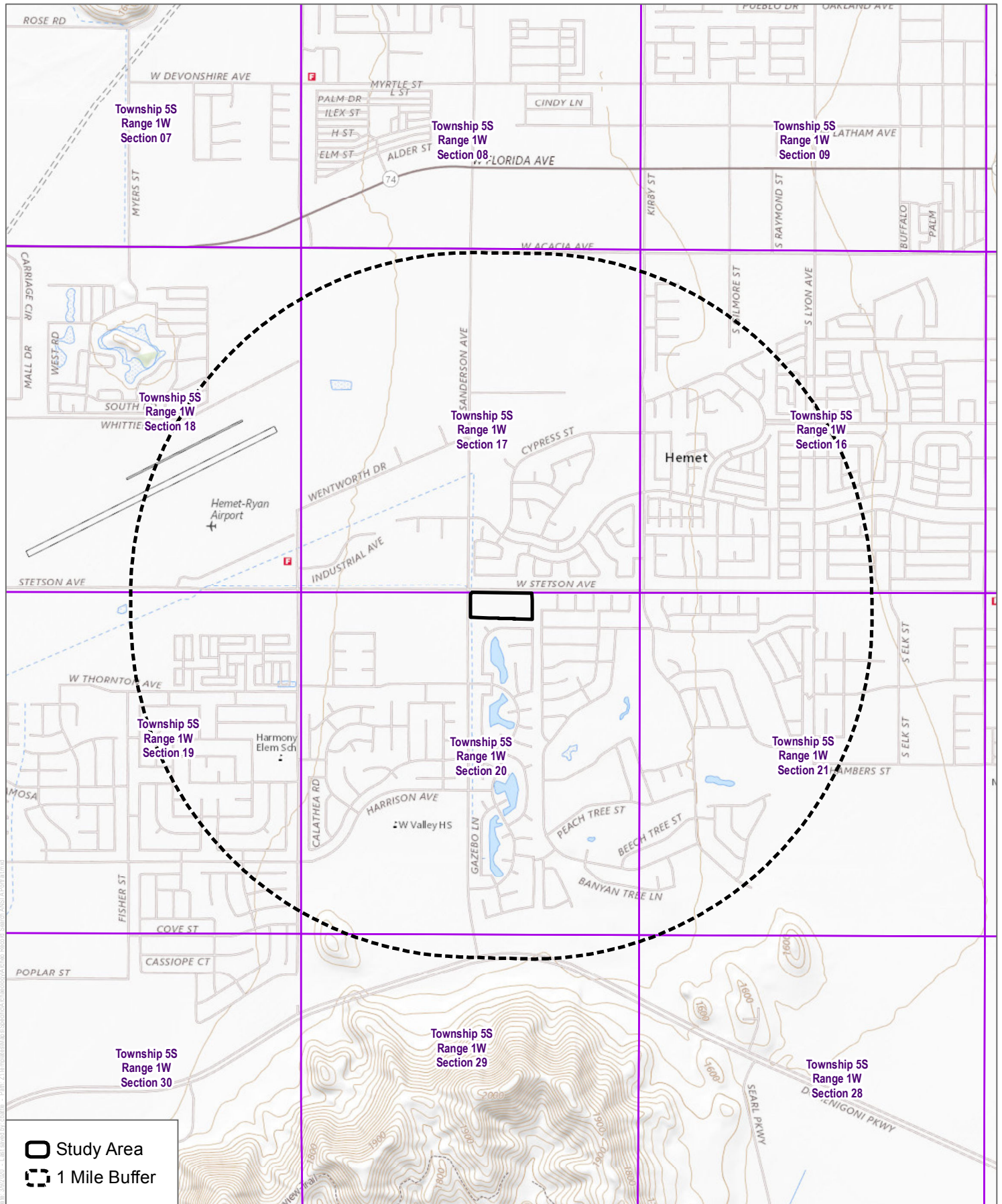


Jessica Colston, B.A.
Archaeologist
Phone: (760) 815-6642
Email: jcolston@dudek.com

Attachments: Figure 1. Project location map.

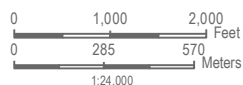


MAIN OFFICE
605 THIRD STREET
ENCINITAS, CALIFORNIA 92024
T 760.942.5147 T 800.450.1818 F 760.632.0164



SOURCE: USGS 7.5-Minute Series Hemet & Winchester Quadrangles

DUDEK



Records Search
Stetson Corners

APPENDIX C (CONFIDENTIAL)

Tribal Correspondence

