

Sanger Unified School District
Notice of Intent to Adopt a Mitigated Negative Declaration for the
New Southeast Fresno Elementary School Project
(State Clearinghouse No. 2020049007)

NOTICE IS HEREBY GIVEN:

In accordance with the California Environmental Quality Act, Sanger Unified School District has prepared an Initial Study and Mitigated Negative Declaration for the proposed New Southeast Fresno Elementary School Project (“project”). Based on the Initial Study, the District has determined that although the project could have a significant effect on the environment, there would not be a significant effect because the District has incorporated into the project mitigation measures that would avoid any significant effects of the project or reduce the effects to an insignificant level.

The Board of Trustees of Sanger Unified School District will consider adopting the proposed Mitigated Negative Declaration and approving the project on Tuesday, December 13, 2022, at 7:00 p.m. or as soon thereafter as possible in the District Administration Office Board Room, 1905 Seventh Street, Sanger, CA 93657. All interested persons are invited to attend this meeting and present testimony regarding the project.

Project Location and Description:

Sanger Unified School District is proposing to develop the New Southeast Fresno Elementary School Project to serve the growing student population resulting from new urban development in southeast Fresno within the District’s boundaries. The project site encompasses 17.79 acres located on the west side of Temperance Avenue approximately 700 feet north of Church Avenue in an unincorporated portion of Fresno County, California (APNs 316-160-46 and 316-160-72). The site is immediately adjacent to the City of Fresno’s city limits and is within the Fresno Sphere of Influence. The project includes the annexation of the site to the City of Fresno. It is anticipated that the project will be served by the City of Fresno’s water and sewer systems. The location of the project site is displayed on Figures 1 and 2.

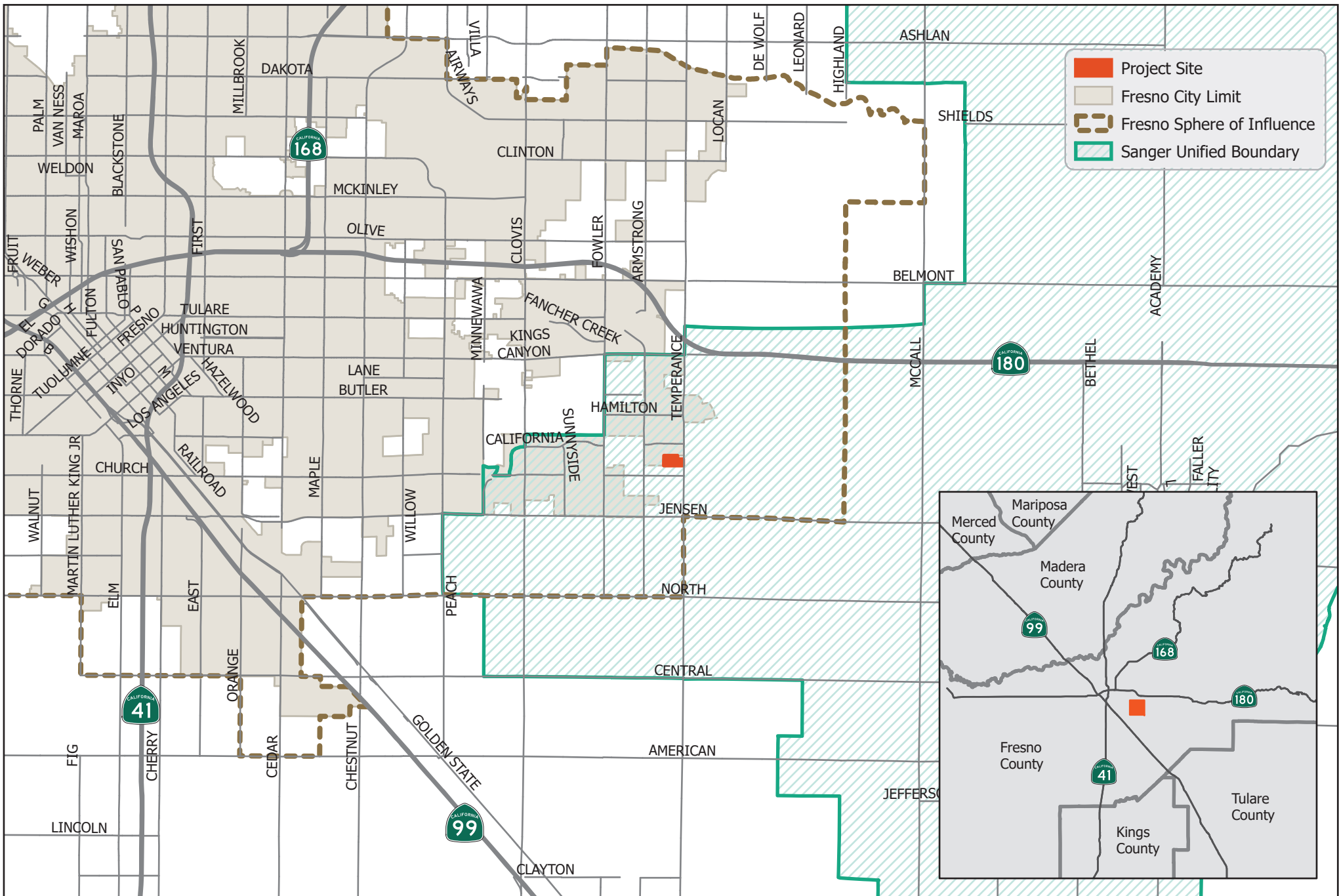
The project will be developed in phases, beginning with limited facilities that will house up to 50 elementary school students in two portable classrooms adjacent to a permanent structure that will house a school office and restroom. Playfields and athletic facilities will also be constructed with this phase (Figure 3). In its initial form, the school will act as a satellite campus to another elementary school in the vicinity. Construction of the first phase is anticipated to be completed for the 2024-25 school year.

At full buildout, the elementary school will be designed to provide capacity for approximately 700 students in transitional kindergarten through sixth grades. The campus will have approximately 45 employees (including administrators, faculty, and support staff). Facilities planned as part of the project include administrative offices, classrooms, a multi-purpose building, athletic fields (which may be lighted), physical education facilities, and parking areas (Figure 4). Instructional activities at the elementary school will be in regular session on weekdays from late August to early June, with additional special events and classes during evenings, on

weekends, and during the summer recess. The timing for full buildout of the school will be dependent upon enrollment growth and funding availability.

Mitigation Measures: The District has incorporated into the project mitigation measures for potentially significant project impacts related to air quality, biological resources, cultural resources, geology and soils, noise, transportation, and tribal cultural resources. The mitigation measures are included in the Summary Table of Mitigation Measures of the Initial Study and throughout the body of the report.

Public Review and Comment: Members of the public and interested agencies may review and submit written comments on the proposed Mitigated Negative Declaration and Initial Study. The documents are available for review at the Sanger Unified School District Administration Office, located at 1905 Seventh Street, Sanger, CA 93657, and on the District's website: <https://www.sanger.k12.ca.us/departments/business-services/purchasing/>. The public review period will begin on Friday, October 28, 2022, and end on Monday, November 28, 2022. Please submit your written comments no later than 5:00 p.m. on November 28, 2022, via mail to Ryan Kilby, Chief Operations Officer, 1905 Seventh Street, Sanger, CA 93657, or via email to ryan_kilby@sangerusd.net.



Project Location

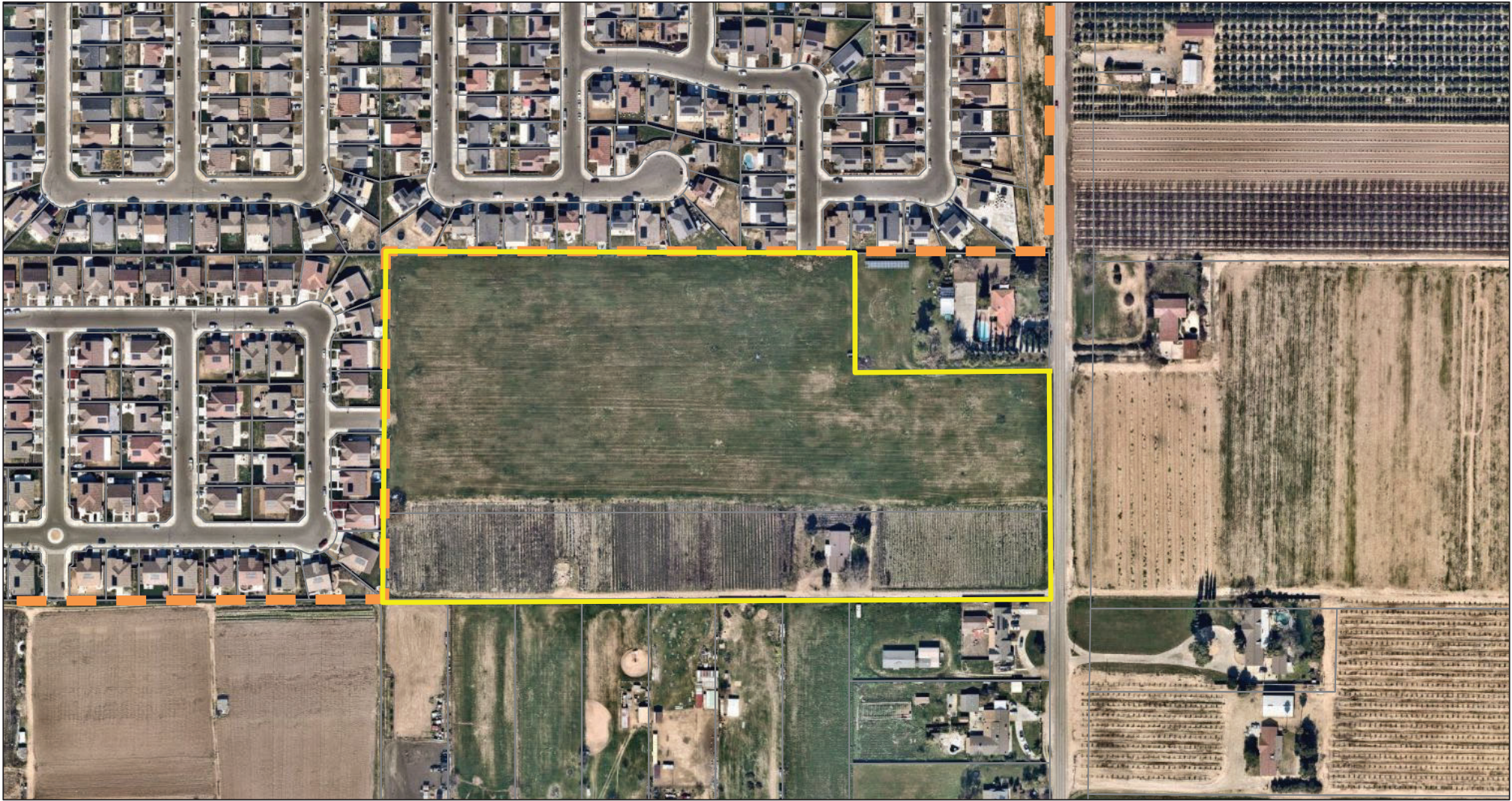
New Southeast Fresno Elementary School Project
 Sanger Unified School District

ODELL Planning & Research, Inc.
 Environmental Planning • School Facility Planning • Demographics

0 0.5 1 2
 Miles



Figure 1

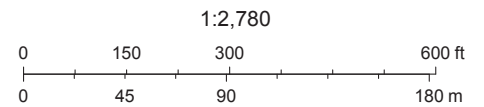


Project Site

New Southeast Fresno Elementary School Project
Sanger Unified School District

ODELL Planning & Research, Inc.
Environmental Planning • School Facility Planning • Demographics

-  Project Site
-  Fresno City Limits
-  Parcels

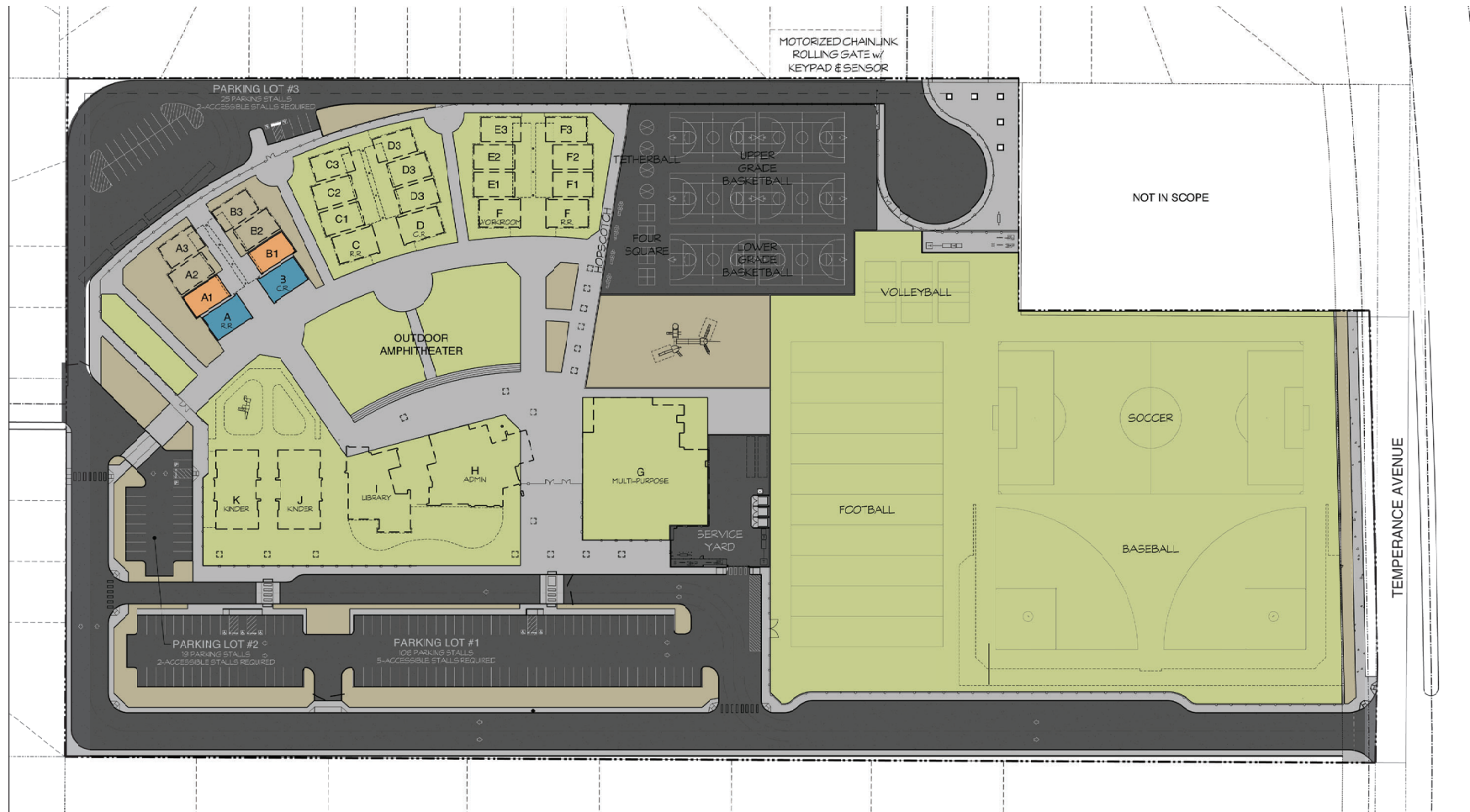


Copyright nearmap 2015

Web AppBuilder for ArcGIS
Copyright nearmap 2015 |

Figure 2

Figure 3: Site Plan (Initial Limited Phase)



SITE PLAN - PHASE 1



Figure 4: Site Plan (Full Buildout)



SITE PLAN - FULL DEVELOPMENT

