

## **Appendix A – Notice of Preparation and Comment Letters**

---

## NOTICE OF PREPARATION

**TO:** Agencies, Organizations and Interested Parties

**Date:** May 14, 2020

**SUBJECT:** Notice of Preparation of a Draft Environmental Impact Report in Compliance with Title 14, Section 15082(a), 15103, and 15375 of the California Code of Regulations

The City of Beaumont is the Lead Agency under the California Environmental Quality Act (CEQA) in the preparation of the Environmental Impact Report (EIR) for the Project identified below. The Lead Agency has prepared this Notice of Preparation (NOP) for the EIR in order to provide the widest exposure and opportunity for input from public agencies, stakeholders, organizations, and individuals on the scope of the environmental analysis addressing the potential effects of the Proposed Project.

### **PROJECT TITLE:** POTRERO LOGISTICS CENTER

**AGENCIES:** The City of Beaumont requests your agency's views on the scope and content of the environmental information relevant to your agency's statutory responsibilities in connection with the Proposed Project, in accordance with California Code of Regulations, Title 14, Section 15082(b).

**ORGANIZATIONS AND INTERESTED PARTIES:** The City of Beaumont requests your comments and concerns regarding the environmental issues associated with the construction an approximately 577,920-square foot "high-cube" logistics warehouse facility on approximately 32-acres.

**PROJECT LOCATION:** The Project site is located the western portion of the City of Beaumont (City), south of State Route 60 (SR-60), and approximately 3 miles west of Interstate 10 (I-10). As shown in Exhibit 1, Aerial Map, the site is bounded by SR-60 and a Specific Plan development area to the north, by the future alignment of Potrero Boulevard and vacant parcels to the east, by the unpaved alignment of 4th Street to the south, and by undeveloped parcels to the west. Assessor Parcel Numbers (APNs): 424-010-020 (City of Beaumont), and 424-010-009 and 424-010-010 (County of Riverside).

**PROJECT DESCRIPTION:** The proposed Project is comprised of the following elements:

- Certification of the EIR;
- General Plan Land Use designation amendment on APN 424-010-020, 424-010-009 and APN 424-010-010;
- Rezoning to change the zoning of APN 424-010-020 to Manufacturing (M-Zone);
- Prezoning to change the existing zoning of APN 424-010-009 and APN 424-010-010 from the County's W-2 Controlled Development Area to the City's Manufacturing (M-Zone);
- Plot plan approval and request of modifications to City parking standards;
- Dedicate and approve a portion of the right-of-way (ROW) for 4th Street to the City; and
- Approval of Annexation Request to the Local Agency Formation Commission (LAFCo).

The Project applicant proposes to construct a "high-cube" logistics warehouse building of approximately 577,920 square feet on approximately 32- acres. Within the proposed warehouse building will be two office spaces that would total approximately 20,000 square feet located on the southeast and northeast corners of the proposed logistics warehouse. The Project would include associated facilities and improvements such as a perimeter fencing, parking, onsite and perimeter landscaping, lighting, and exterior sidewalks.

One detention basin would be located near the northern property line (approximately 4.03 acres) and two additional detention basins would be located along the southern property line (approximately 3.62 acres combined). Landscaping provided would make up approximately 20.8 percent of the Project site. The Project would provide approximately 314 automobile parking stalls, 106 trailer stalls, and 112 dock doors.

Project implementation would include off-site improvements including utility connections and street improvements, expansion of sewer service, and storm drain improvements to serve the Project site. The site also includes a portion of the ROW for 4th Street, which runs east to west and divides the two County parcels. Approximately 3.16 acres of 4th Street will be dedicated to the City. Under existing conditions, the 4th Street ROW is unimproved and would be constructed upon implementation of the proposed Project.

The Project would also include annexation of Assessor's Parcel Number (APN) 424-010-009 and APN 424-010-010 (Annexation Area). Annexation of these parcels would allow for development of the Potrero Logistics Center Project site. The proposed Project is comprised of APN 424-010-020 which was annexed into the City of Beaumont in 2016 and APN 424-010-009 (a portion of the Annexation Area) which is located in the County of Riverside. The City would approve the General Plan Amendment and prezone the property in anticipation of annexation. The provisions of the City General Plan and prezoned parcel would only take effect once the annexation process is complete. As such, the Project request will include approval by the City to seek annexation of the property to the City and to the Beaumont Cherry Valley Water District (BCVWD).

The current right of way for the Potrero Interchange encroaches into the Project site. When the right of way (ROW) was initially acquired by the City of Beaumont, the limits were determined based on existing topography and done prior to entitlements being obtained for this (and other sites). At that time, discussions with the City of Beaumont confirmed that the ROW could be modified to accommodate the proposed Project as long as there wasn't any impact to the design of the on and off ramps for the interchange. The proposed Project includes a design option to revise the ROW lines. The construction of retaining walls and minor grading will be required to accommodate the current site plan and not impact the interchange as currently designed and approved.

The Project site is not included on a list of hazardous materials sites compiled pursuant to Government Code Section 65962.5 (California Department of Toxic Substances Control list of various hazardous sites).

**POTENTIAL ENVIRONMENTAL EFFECTS:** The City of Beaumont has directed preparation of an Environmental Impact Report to evaluate the proposed Project's potential environmental impacts and analyze Project alternatives. The environmental topic areas anticipated to be included in the EIR include Aesthetics, Air Quality, Biological Resources, Cultural Resources, Energy, Geology and Soils, Greenhouse Gas Emissions, Hazards and Hazardous Materials, Hydrology, Land Use and Planning, Noise, Public Services, Recreation, Transportation, Tribal Resources, Utilities and Service Systems, and Wildfire.

The EIR will address the short- and long-term effects of the Project on the environment, including the impacts of any off-site improvements. It will also evaluate the potential for the Project to cause direct and indirect growth-inducing impacts, as well as cumulative impacts. Alternatives to the proposed Project will be evaluated that may reduce impacts that are determined to be significant in the EIR. Mitigation will be proposed for those impacts that are determined to be significant.

**PUBLIC REVIEW PERIOD:** This NOP will be available for public review and comment for a period of 30-days from the date posted above. Public agencies, interested organizations, and individuals have the opportunity to comment on the proposed Project, to identify those environmental issues potentially affected by the Project which should be addressed further by the City of Beaumont in the EIR. This NOP is available for public review during regular business hours at the locations listed below, and online at <https://www.beaumontca.gov/1125/Planning-Projects>. The City of Beaumont will accept comments that are written, emailed, faxed and or any other format.

**COMMENTS:** In your comment, please indicate a contact person for your agency or organization and send your comments to:

Christina Taylor, Community Development Director  
City of Beaumont  
550 E. 6<sup>th</sup> Street  
Beaumont, CA 92223

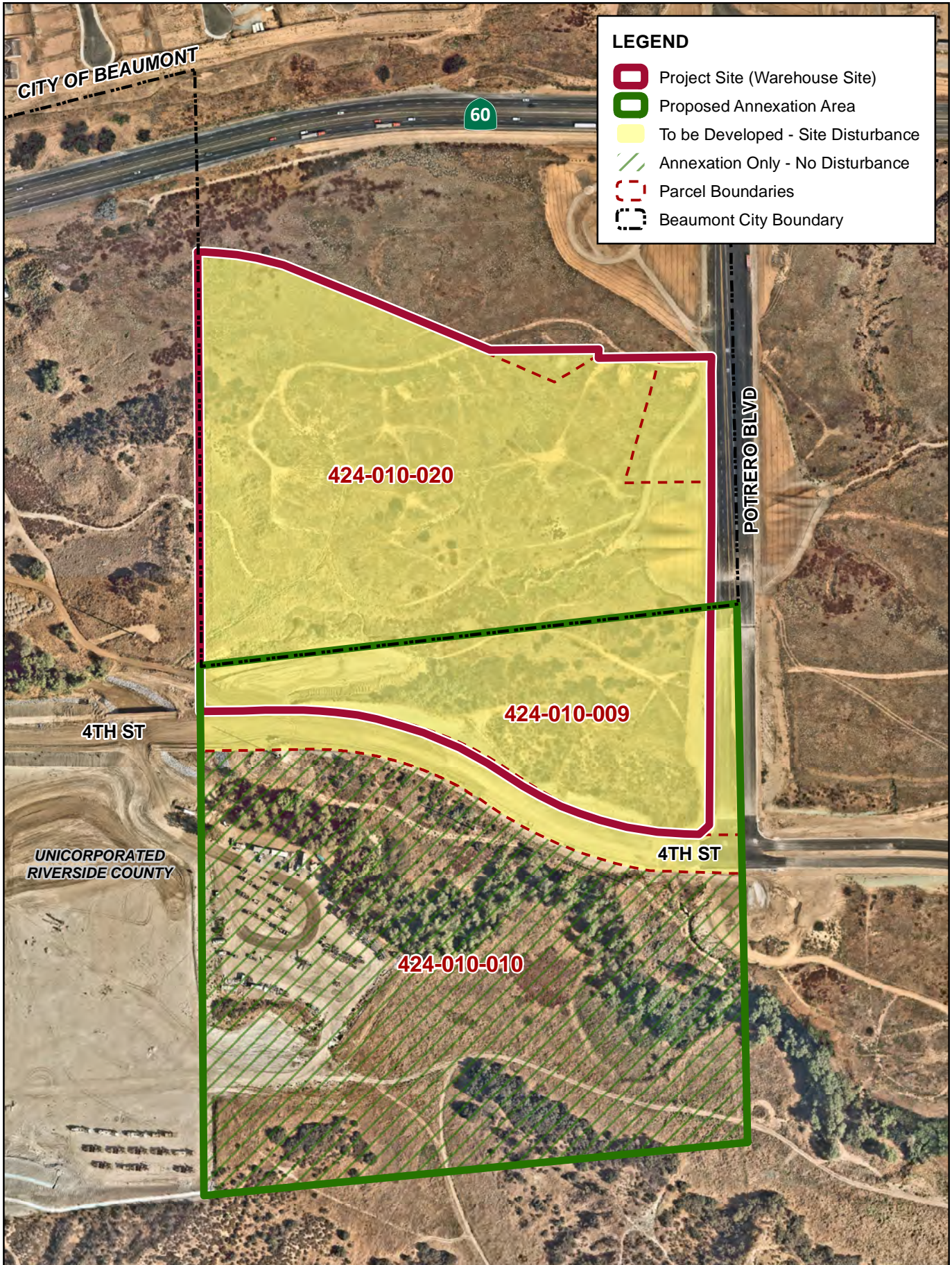
In addition to mail, your comments may also be sent by FAX to 951.769.8526 or by email to [ctaylor@beaumontca.gov](mailto:ctaylor@beaumontca.gov) and include "(Potrero Logistics Center" in the subject line).

**PUBLIC SCOPING MEETING:** Given the current COVID 19 crisis, and associated Federal, State, and local orders for social distancing, the City will hold a virtual Scoping Meeting as opposed to an in person meeting to present updates on the Project and the CEQA process, and to receive public comments and suggestions regarding the scope and content of the EIR. The virtual meeting will be held at the following, date, time, and virtual meeting link:

Virtual Meeting Date/Time: Thursday, June 4, 2020 at 6:00 PM  
Meeting Link: <https://www.beaumontca.gov/1125/Planning-Projects>

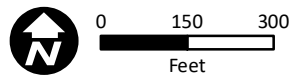
Attachments:

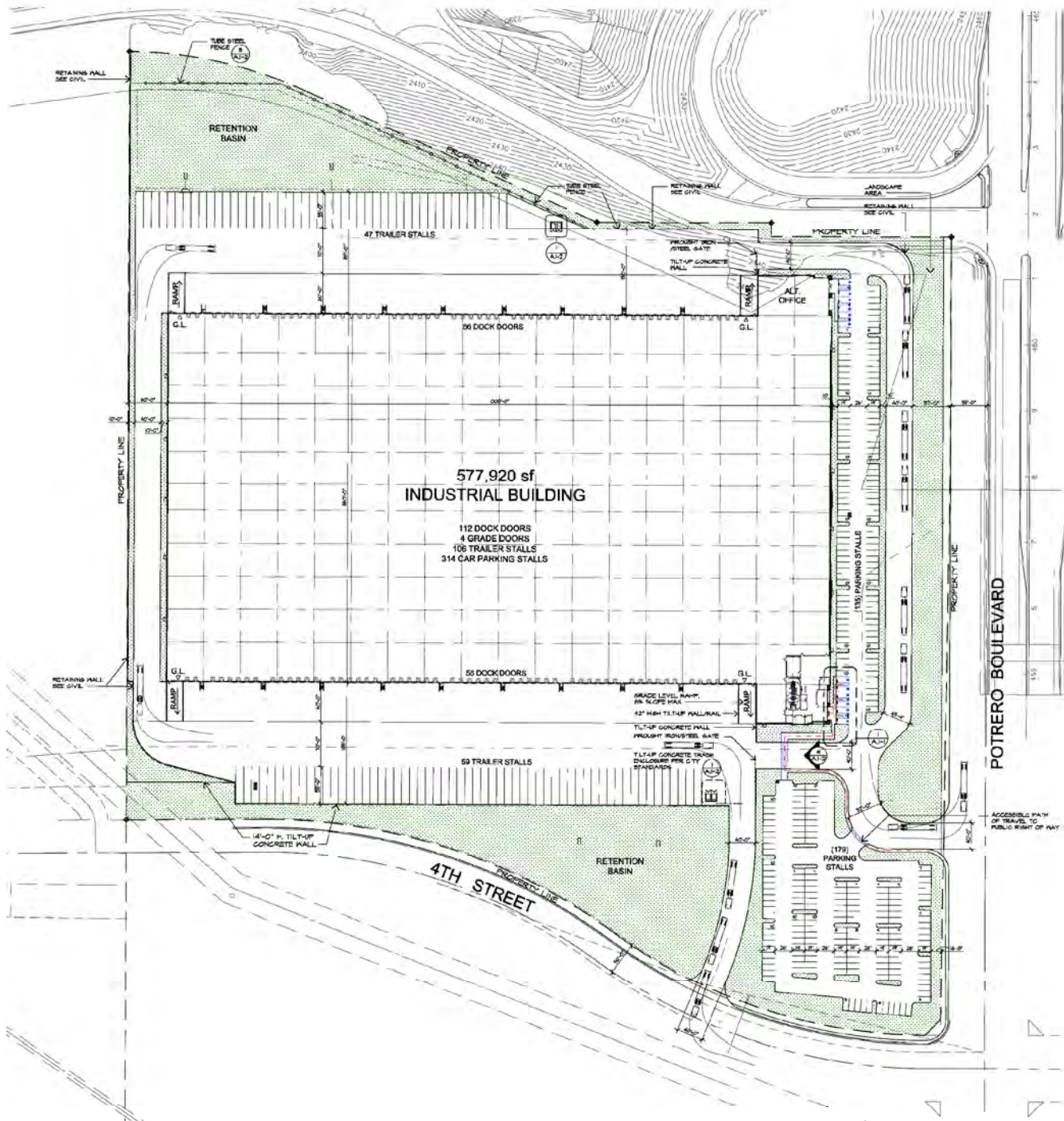
Exhibit 1 – Aerial Map  
Exhibit 2 – Site Plan  
Exhibit 3 – Building Elevations



Source: Near Map (Image dated 9/20/2019), Riverside County GIS (2020). C:\Users\Maria.Rodriguez\OneDrive - KHRIV\_Projects\Caprock Potrero Warehouse EIR\Graphics\GIS\Beaumont\ProjectBoundaries.mxd

**EXHIBIT 1: Aerial Map**  
Potrero Logistics Center





Source: douglasfranz "Progress Set Aug-27-2019"

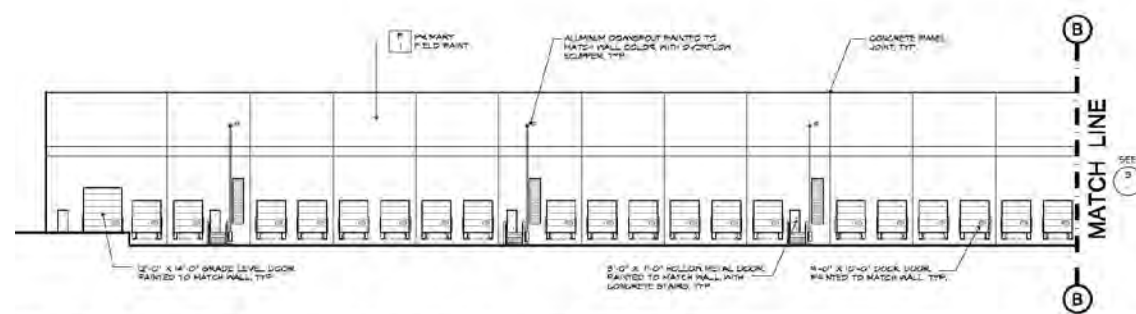
\\rvfp01\Data\Project\RIV\_PLAN\194143001 - Caprock Potrero Warehouse EIR\Graphics\GIS\mxd\WOP Exhibit 2 Site Plan.mxd

**EXHIBIT 2: Site Plan**  
Potrero Logistics Center



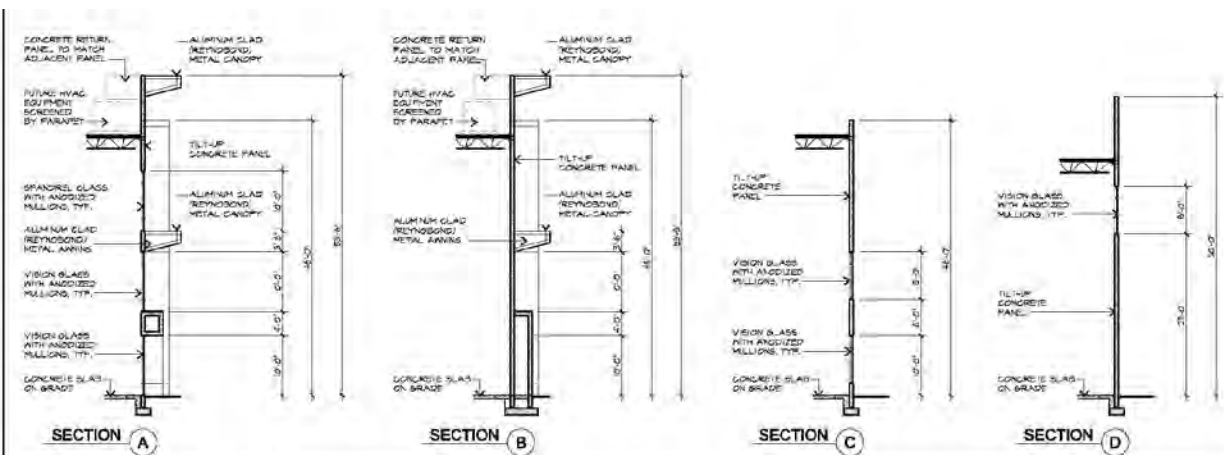
Not to Scale





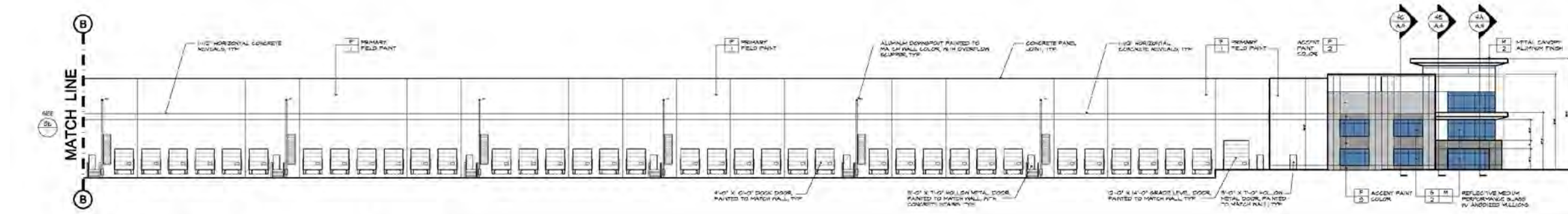
**SOUTH ELEVATION (partial) - NORTH ELEVATION (mirrored)**  
SCALE: 1/8" = 1'-0"

3b



**PARTIAL WALL SECTION**  
SCALE: 3/32" = 1'-0"

4

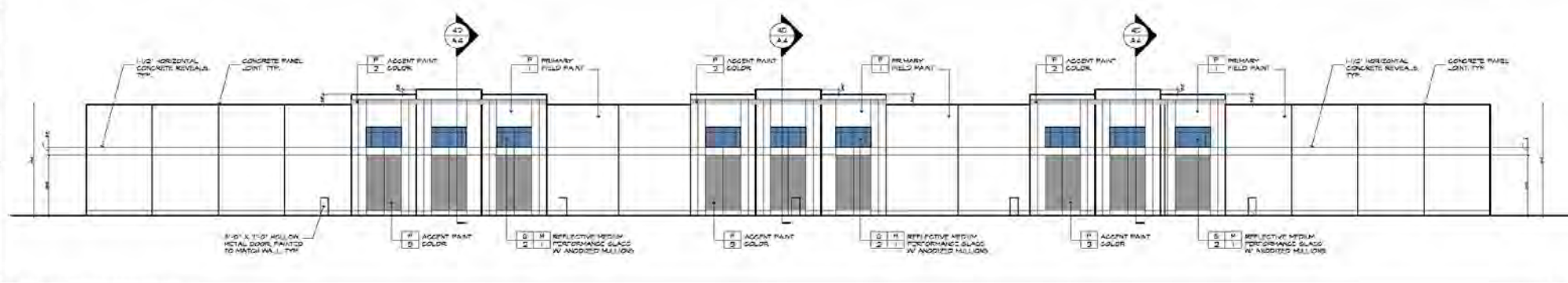


**SOUTH ELEVATION (partial) - NORTH ELEVATION (mirrored)**  
SCALE: 1/8" = 1'-0"

3

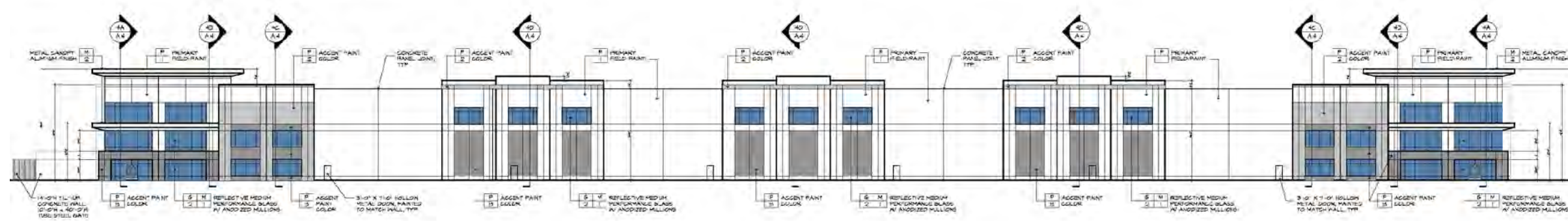
1	3/4" TILT-UP CONCRETE WALL PANEL, ONE COAT PRIMER, ONE COAT FIELD COLOR, SHERWIN WILLIAMS PAINT SW 7014 EGGS WHITE
2	3/4" TILT-UP CONCRETE WALL PANEL, ONE COAT PRIMER, ONE COAT ACCENT COLOR, SHERWIN WILLIAMS PAINT SW 9110 ACER
3	3/4" TILT-UP CONCRETE WALL PANEL, ONE COAT PRIMER, ONE COAT ACCENT COLOR, SHERWIN WILLIAMS PAINT SW 7014 EGGS WHITE
4	1/2" HORIZONTAL CONCRETE REVEALS, TYP.
5	1/2" HORIZONTAL CONCRETE REVEALS, TYP.
6	1/2" HORIZONTAL CONCRETE REVEALS, TYP.
7	1/2" HORIZONTAL CONCRETE REVEALS, TYP.
8	1/2" HORIZONTAL CONCRETE REVEALS, TYP.
9	1/2" HORIZONTAL CONCRETE REVEALS, TYP.
10	1/2" HORIZONTAL CONCRETE REVEALS, TYP.
11	1/2" HORIZONTAL CONCRETE REVEALS, TYP.
12	1/2" HORIZONTAL CONCRETE REVEALS, TYP.
13	1/2" HORIZONTAL CONCRETE REVEALS, TYP.
14	1/2" HORIZONTAL CONCRETE REVEALS, TYP.
15	1/2" HORIZONTAL CONCRETE REVEALS, TYP.
16	1/2" HORIZONTAL CONCRETE REVEALS, TYP.
17	1/2" HORIZONTAL CONCRETE REVEALS, TYP.
18	1/2" HORIZONTAL CONCRETE REVEALS, TYP.
19	1/2" HORIZONTAL CONCRETE REVEALS, TYP.
20	1/2" HORIZONTAL CONCRETE REVEALS, TYP.
21	1/2" HORIZONTAL CONCRETE REVEALS, TYP.
22	1/2" HORIZONTAL CONCRETE REVEALS, TYP.
23	1/2" HORIZONTAL CONCRETE REVEALS, TYP.
24	1/2" HORIZONTAL CONCRETE REVEALS, TYP.
25	1/2" HORIZONTAL CONCRETE REVEALS, TYP.
26	1/2" HORIZONTAL CONCRETE REVEALS, TYP.
27	1/2" HORIZONTAL CONCRETE REVEALS, TYP.
28	1/2" HORIZONTAL CONCRETE REVEALS, TYP.
29	1/2" HORIZONTAL CONCRETE REVEALS, TYP.
30	1/2" HORIZONTAL CONCRETE REVEALS, TYP.
31	1/2" HORIZONTAL CONCRETE REVEALS, TYP.
32	1/2" HORIZONTAL CONCRETE REVEALS, TYP.
33	1/2" HORIZONTAL CONCRETE REVEALS, TYP.
34	1/2" HORIZONTAL CONCRETE REVEALS, TYP.
35	1/2" HORIZONTAL CONCRETE REVEALS, TYP.
36	1/2" HORIZONTAL CONCRETE REVEALS, TYP.
37	1/2" HORIZONTAL CONCRETE REVEALS, TYP.
38	1/2" HORIZONTAL CONCRETE REVEALS, TYP.
39	1/2" HORIZONTAL CONCRETE REVEALS, TYP.
40	1/2" HORIZONTAL CONCRETE REVEALS, TYP.
41	1/2" HORIZONTAL CONCRETE REVEALS, TYP.
42	1/2" HORIZONTAL CONCRETE REVEALS, TYP.
43	1/2" HORIZONTAL CONCRETE REVEALS, TYP.
44	1/2" HORIZONTAL CONCRETE REVEALS, TYP.
45	1/2" HORIZONTAL CONCRETE REVEALS, TYP.
46	1/2" HORIZONTAL CONCRETE REVEALS, TYP.
47	1/2" HORIZONTAL CONCRETE REVEALS, TYP.
48	1/2" HORIZONTAL CONCRETE REVEALS, TYP.
49	1/2" HORIZONTAL CONCRETE REVEALS, TYP.
50	1/2" HORIZONTAL CONCRETE REVEALS, TYP.
51	1/2" HORIZONTAL CONCRETE REVEALS, TYP.
52	1/2" HORIZONTAL CONCRETE REVEALS, TYP.
53	1/2" HORIZONTAL CONCRETE REVEALS, TYP.
54	1/2" HORIZONTAL CONCRETE REVEALS, TYP.
55	1/2" HORIZONTAL CONCRETE REVEALS, TYP.
56	1/2" HORIZONTAL CONCRETE REVEALS, TYP.
57	1/2" HORIZONTAL CONCRETE REVEALS, TYP.
58	1/2" HORIZONTAL CONCRETE REVEALS, TYP.
59	1/2" HORIZONTAL CONCRETE REVEALS, TYP.
60	1/2" HORIZONTAL CONCRETE REVEALS, TYP.
61	1/2" HORIZONTAL CONCRETE REVEALS, TYP.
62	1/2" HORIZONTAL CONCRETE REVEALS, TYP.
63	1/2" HORIZONTAL CONCRETE REVEALS, TYP.
64	1/2" HORIZONTAL CONCRETE REVEALS, TYP.
65	1/2" HORIZONTAL CONCRETE REVEALS, TYP.
66	1/2" HORIZONTAL CONCRETE REVEALS, TYP.
67	1/2" HORIZONTAL CONCRETE REVEALS, TYP.
68	1/2" HORIZONTAL CONCRETE REVEALS, TYP.
69	1/2" HORIZONTAL CONCRETE REVEALS, TYP.
70	1/2" HORIZONTAL CONCRETE REVEALS, TYP.
71	1/2" HORIZONTAL CONCRETE REVEALS, TYP.
72	1/2" HORIZONTAL CONCRETE REVEALS, TYP.
73	1/2" HORIZONTAL CONCRETE REVEALS, TYP.
74	1/2" HORIZONTAL CONCRETE REVEALS, TYP.
75	1/2" HORIZONTAL CONCRETE REVEALS, TYP.
76	1/2" HORIZONTAL CONCRETE REVEALS, TYP.
77	1/2" HORIZONTAL CONCRETE REVEALS, TYP.
78	1/2" HORIZONTAL CONCRETE REVEALS, TYP.
79	1/2" HORIZONTAL CONCRETE REVEALS, TYP.
80	1/2" HORIZONTAL CONCRETE REVEALS, TYP.
81	1/2" HORIZONTAL CONCRETE REVEALS, TYP.
82	1/2" HORIZONTAL CONCRETE REVEALS, TYP.
83	1/2" HORIZONTAL CONCRETE REVEALS, TYP.
84	1/2" HORIZONTAL CONCRETE REVEALS, TYP.
85	1/2" HORIZONTAL CONCRETE REVEALS, TYP.
86	1/2" HORIZONTAL CONCRETE REVEALS, TYP.
87	1/2" HORIZONTAL CONCRETE REVEALS, TYP.
88	1/2" HORIZONTAL CONCRETE REVEALS, TYP.
89	1/2" HORIZONTAL CONCRETE REVEALS, TYP.
90	1/2" HORIZONTAL CONCRETE REVEALS, TYP.
91	1/2" HORIZONTAL CONCRETE REVEALS, TYP.
92	1/2" HORIZONTAL CONCRETE REVEALS, TYP.
93	1/2" HORIZONTAL CONCRETE REVEALS, TYP.
94	1/2" HORIZONTAL CONCRETE REVEALS, TYP.
95	1/2" HORIZONTAL CONCRETE REVEALS, TYP.
96	1/2" HORIZONTAL CONCRETE REVEALS, TYP.
97	1/2" HORIZONTAL CONCRETE REVEALS, TYP.
98	1/2" HORIZONTAL CONCRETE REVEALS, TYP.
99	1/2" HORIZONTAL CONCRETE REVEALS, TYP.
100	1/2" HORIZONTAL CONCRETE REVEALS, TYP.

**MATERIAL & FINISH LEGEND**



**WEST ELEVATION**  
SCALE: 1" = 20'-0"

2



**EAST ELEVATION**  
SCALE: 1" = 20'-0"

1



# South Coast Air Quality Management District

21865 Copley Drive, Diamond Bar, CA 91765-4178  
(909) 396-2000 • [www.aqmd.gov](http://www.aqmd.gov)

SENT VIA E-MAIL:

June 10, 2020

[ctaylor@beaumontca.gov](mailto:ctaylor@beaumontca.gov)

Christina Taylor, Director  
City of Beaumont, Community Development Department  
550 E. 6th Street  
Beaumont, CA 92223

## **Notice of Preparation of a Draft Environmental Impact Report for the Proposed Potrero Logistics Center<sup>1</sup>**

South Coast Air Quality Management District (South Coast AQMD) staff appreciates the opportunity to comment on the above-mentioned document. South Coast AQMD staff's comments are recommendations regarding the analysis of potential air quality impacts from the Proposed Project that should be included in the Draft Environmental Impact Report (EIR). Please send South Coast AQMD a copy of the Draft EIR upon its completion and public release. Note that copies of the Draft EIR that are submitted to the State Clearinghouse are not forwarded to South Coast AQMD. Please forward a copy of the Draft EIR directly to South Coast AQMD at the address shown in the letterhead. **In addition, please send with the Draft EIR all appendices or technical documents related to the air quality, health risk, and greenhouse gas analyses and electronic versions of all air quality modeling and health risk assessment files<sup>2</sup>. These include emission calculation spreadsheets and modeling input and output files (not PDF files). Without all files and supporting documentation, South Coast AQMD staff will be unable to complete our review of the air quality analyses in a timely manner. Any delays in providing all supporting documentation will require additional time for review beyond the end of the comment period.**

### **Air Quality Analysis**

South Coast AQMD adopted its California Environmental Quality Act (CEQA) Air Quality Handbook in 1993 to assist other public agencies with the preparation of air quality analyses. South Coast AQMD recommends that the Lead Agency use this Handbook as guidance when preparing its air quality analysis. Copies of the Handbook are available from South Coast AQMD's Subscription Services Department by calling (909) 396-3720. More guidance developed since this Handbook is also available on South Coast AQMD's website at: [http://www.aqmd.gov/home/regulations/ceqa/air-quality-analysis-handbook/ceqa-air-quality-handbook-\(1993\)](http://www.aqmd.gov/home/regulations/ceqa/air-quality-analysis-handbook/ceqa-air-quality-handbook-(1993)). South Coast AQMD staff also recommends that the Lead Agency use the CalEEMod land use emissions software. This software has recently been updated to incorporate up-to-date state and locally approved emission factors and methodologies for estimating pollutant emissions from typical land use development. CalEEMod is the only software model maintained by the California Air Pollution Control Officers Association (CAPCOA) and replaces the now outdated URBEMIS. This model is available free of charge at: [www.caleemod.com](http://www.caleemod.com).

---

<sup>1</sup> The Proposed Project would include construction of a 577,920-square-foot warehouse on 32 acres.

<sup>2</sup> Pursuant to the CEQA Guidelines Section 15174, the information contained in an EIR shall include summarized technical data, maps, plot plans, diagrams, and similar relevant information sufficient to permit full assessment of significant environmental impacts by reviewing agencies and members of the public. Placement of highly technical and specialized analysis and data in the body of an EIR should be avoided through inclusion of supporting information and analyses as appendices to the main body of the EIR. Appendices to the EIR may be prepared in volumes separate from the basic EIR document, but shall be readily available for public examination and shall be submitted to all clearinghouses which assist in public review.

South Coast AQMD has also developed both regional and localized significance thresholds. South Coast AQMD staff requests that the Lead Agency quantify criteria pollutant emissions and compare the results to South Coast AQMD's CEQA regional pollutant emissions significance thresholds to determine air quality impacts. South Coast AQMD's CEQA regional pollutant emissions significance thresholds can be found here: <http://www.aqmd.gov/docs/default-source/ceqa/handbook/scaqmd-air-quality-significance-thresholds.pdf>. In addition to analyzing regional air quality impacts, South Coast AQMD staff recommends calculating localized air quality impacts and comparing the results to localized significance thresholds (LSTs). LSTs can be used in addition to the recommended regional significance thresholds as a second indication of air quality impacts when preparing a CEQA document. Therefore, when preparing the air quality analysis for the Proposed Project, it is recommended that the Lead Agency perform a localized analysis by either using the LSTs developed by South Coast AQMD staff or performing dispersion modeling as necessary. Guidance for performing a localized air quality analysis can be found at: <http://www.aqmd.gov/home/regulations/ceqa/air-quality-analysis-handbook/localized-significance-thresholds>.

The Lead Agency should identify any potential adverse air quality impacts that could occur from all phases of the Proposed Project and all air pollutant sources related to the Proposed Project. Air quality impacts from both construction (including demolition, if any) and operations should be calculated. Construction-related air quality impacts typically include, but are not limited to, emissions from the use of heavy-duty equipment from grading, earth-loading/unloading, paving, architectural coatings, off-road mobile sources (e.g., heavy-duty construction equipment) and on-road mobile sources (e.g., construction worker vehicle trips, material transport trips). Operation-related air quality impacts may include, but are not limited to, emissions from stationary sources (e.g., boilers), area sources (e.g., solvents and coatings), and vehicular trips (e.g., on- and off-road tailpipe emissions and entrained dust). Air quality impacts from indirect sources, such as sources that generate or attract vehicular trips, should be included in the analysis.

Operation of the Proposed Project generates or attracts heavy-duty diesel-fueled vehicles. It is recommended that the Lead Agency perform a mobile source health risk assessment. Guidance for performing a mobile source health risk assessment ("*Health Risk Assessment Guidance for Analyzing Cancer Risk from Mobile Source Diesel Idling Emissions for CEQA Air Quality Analysis*") can be found at: <http://www.aqmd.gov/home/regulations/ceqa/air-quality-analysis-handbook/mobile-source-toxics-analysis>. An analysis of all toxic air contaminant impacts due to the use of equipment potentially generating such air pollutants should also be included.

In addition, guidance on siting incompatible land uses (such as placing homes near freeways) can be found in the California Air Resources Board's *Air Quality and Land Use Handbook: A Community Health Perspective*, which can be found at: <http://www.arb.ca.gov/ch/handbook.pdf>. CARB's Land Use Handbook is a general reference guide for evaluating and reducing air pollution impacts associated with new projects that go through the land use decision-making process. Guidance<sup>3</sup> on strategies to reduce air pollution exposure near high-volume roadways can be found at: [https://www.arb.ca.gov/ch/rd\\_technical\\_advisory\\_final.PDF](https://www.arb.ca.gov/ch/rd_technical_advisory_final.PDF).

South Coast AQMD staff is concerned about potential public health impacts of siting warehouses within close proximity of sensitive land uses, especially in communities that are already heavily affected by the existing warehouse and truck activities. The South Coast AQMD's Multiple Air Toxics Exposure Study

---

<sup>3</sup> In April 2017, CARB published a technical advisory, *Strategies to Reduce Air Pollution Exposure Near High-Volume Roadways: Technical Advisory*, to supplement CARB's *Air Quality and Land Use Handbook: A Community Health Perspective*. This technical advisory is intended to provide information on strategies to reduce exposures to traffic emissions near high-volume roadways to assist land use planning and decision-making in order to protect public health and promote equity and environmental justice. The technical advisory is available at: <https://www.arb.ca.gov/ch/landuse.htm>.



(MATES IV), completed in May 2015, concluded that the largest contributor to cancer risk from air pollution is diesel particulate matter (DPM) emissions, and that the South Coast Air Basin portion of Riverside County has an estimated population-weighted average cancer risk at 223 in one million<sup>4</sup>. Operation of warehouses generates and attracts heavy-duty diesel-fueled trucks that emit DPM. When the health impacts from the Proposed Project are added to those existing impacts, residents living in the communities surrounding the Proposed Project will possibly face an even greater exposure to air pollution and bear a disproportionate burden of increasing health risks. Thus, cumulative impacts from warehouse projects in communities with existing industrial sources should be evaluated and disclosed.

### **Trip Rates for High Cube Warehouse Projects**

The Proposed Project will include, among others, construction of a 577,920-square-foot warehouse on 32 acres. South Coast AQMD staff recommends the use of truck trip rates from the Institute of Transportation Engineers (ITE) for high cube warehouse projects located in South Coast AQMD (i.e. 1.68 average daily vehicle trips per 1,000 square feet and 0.64 average daily truck trips per 1,000 square feet). Consistent with CEQA Guidelines, the Draft EIR for the Proposed Project may use a non-default trip rate if there is substantial evidence supporting another rate is more appropriate for the air quality analysis.

### **Mitigation Measures**

In the event that the Proposed Project generates significant adverse air quality impacts, CEQA requires that all feasible mitigation measures that go beyond what is required by law be utilized during project construction and operation to minimize these impacts. Pursuant to CEQA Guidelines Section 15126.4 (a)(1)(D), any impacts resulting from mitigation measures must also be discussed. Several resources are available to assist the Lead Agency with identifying potential mitigation measures for the Proposed Project, including:

- Chapter 11 “Mitigating the Impact of a Project” of South Coast AQMD’S *CEQA Air Quality Handbook*. South Coast AQMD’s CEQA web pages available here: <http://www.aqmd.gov/home/regulations/ceqa/air-quality-analysis-handbook/mitigation-measures-and-control-efficiencies>
- South Coast AQMD’s Rule 403 – Fugitive Dust, and the Implementation Handbook for controlling construction-related emissions and Rule 1403 – Asbestos Emissions from Demolition/Renovation Activities
- South Coast AQMD’s Mitigation Monitoring and Reporting Plan (MMRP) for the 2016 Air Quality Management Plan (2016 AQMP) available here (starting on page 86): <http://www.aqmd.gov/docs/default-source/Agendas/Governing-Board/2017/2017-mar3-035.pdf>
- California Air Pollution Control Officers Association (CAPCOA)’s *Quantifying Greenhouse Gas Mitigation Measures* available here: <http://www.capcoa.org/wp-content/uploads/2010/11/CAPCOA-Quantification-Report-9-14-Final.pdf>

Additional mitigation measures for operational air quality impacts from mobile sources that the Lead Agency should consider in the Draft EIR may include the following:

- Require zero-emissions or near-zero emission on-road haul trucks such as heavy-duty trucks with natural gas engines that meet the CARB’s adopted optional NOx emissions standard at 0.02 grams per brake horsepower-hour (g/bhp-hr), if and when feasible. At a minimum, require that vendors, contractors, and/or haul truck operators commit to using 2010 model year<sup>5</sup> trucks (e.g.,

---

<sup>4</sup> South Coast AQMD. May 2015. *Multiple Air Toxics Exposure Study in the South Coast Air Basin*. Accessed at: <http://www.aqmd.gov/docs/default-source/air-quality/air-toxic-studies/mates-iv/mates-iv-final-draft-report-4-1-15.pdf>

<sup>5</sup> The CARB adopted the statewide Truck and Bus Regulation in 2010. The Regulation requires diesel trucks and buses that operate in California to be upgraded to reduce emissions. Newer heavier trucks and buses must meet particulate matter filter

material delivery trucks and soil import/export) that meet CARB's 2010 engine emissions standards at 0.01 g/bhp-hr of particulate matter (PM) and 0.20 g/bhp-hr of NOx emissions or newer, cleaner trucks<sup>6</sup>. Include environmental analyses to evaluate and identify sufficient power available for zero emission trucks and supportive infrastructures in the Energy and Utilities and Service Systems Sections in the CEQA document, where appropriate. The Lead Agency should include the requirement of zero-emission or near-zero emission heavy-duty trucks in applicable bid documents, purchase orders, and contracts. Operators shall maintain records of all trucks associated with project construction to document that each truck used meets these emission standards, and make the records available for inspection. The Lead Agency should conduct regular inspections to the maximum extent feasible to ensure compliance.

- Have truck routes clearly marked with trailblazer signs, so that trucks will not enter residential areas.
- Limit the daily number of trucks allowed at the Proposed Project to levels analyzed in the Final CEQA document. If higher daily truck volumes are anticipated to visit the site, the Lead Agency should commit to re-evaluating the Proposed Project through CEQA prior to allowing this land use or higher activity level.
- Should the Proposed Project generate significant regional emissions, the Lead Agency should require mitigation that requires accelerated phase-in for non-diesel powered trucks. For example, natural gas trucks, including Class 8 HHD trucks, are commercially available today. Natural gas trucks can provide a substantial reduction in health risks, and may be more financially feasible today due to reduced fuel costs compared to diesel. In the Final CEQA document, the Lead Agency should require a phase-in schedule for these cleaner operating trucks to reduce any significant adverse air quality impacts. South Coast AQMD staff is available to discuss the availability of current and upcoming truck technologies and incentive programs with the Lead Agency.
- Provide electric vehicle (EV) Charging Stations (see the discussion below regarding EV charging stations).
- Trucks that can operate at least partially on electricity have the ability to substantially reduce the significant NOx impacts from this project. Further, trucks that run at least partially on electricity are projected to become available during the life of the project as discussed in the 2016-2040 Regional Transportation Plan/Sustainable Communities Strategy (2016-2040 RTP/SCS)<sup>7</sup>. It is important to make this electrical infrastructure available when the project is built so that it is ready when this technology becomes commercially available. The cost of installing electrical charging equipment onsite is significantly cheaper if completed when the project is built compared to retrofitting an existing building. Therefore, South Coast AQMD staff recommends the Lead Agency require the Proposed Project and other plan areas that allow truck parking to be constructed with the appropriate infrastructure to facilitate sufficient electric charging for trucks to plug-in. Similar to the City of Los Angeles requirements for all new projects, South Coast AQMD staff recommends that the Lead Agency require at least five percent of all vehicle parking spaces (including for trucks) include EV charging stations<sup>8</sup>. Further, electrical hookups should be

---

requirements beginning January 1, 2012. Lighter and older heavier trucks must be replaced starting January 1, 2015. By January 1, 2023, nearly all trucks and buses will need to have 2010 model year engines or equivalent. More information on the CARB's Truck and Bus Regulation is available at: <https://www.arb.ca.gov/msprog/onrdiesel/onrdiesel.htm>.

<sup>6</sup> Based on a review of the California Air Resources Board's diesel truck regulations, 2010 model year diesel haul trucks should have already been available and can be obtained in a successful manner for the project construction California Air Resources Board. March 2016. Available at: <http://www.truckload.org/tca/files/ccLibraryFiles/Filename/00000003422/California-Clean-Truck-and-Trailer-Update.pdf> (See slide #23).

<sup>7</sup> Southern California Association of Governments. Accessed at: <http://scagrtpscs.net/Pages/FINAL2016RTPSCS.aspx>.

<sup>8</sup> City of Los Angeles. Accessed at:

[http://ladbs.org/LADBSWeb/LADBS\\_Forms/Publications/LAGreenBuildingCodeOrdinance.pdf](http://ladbs.org/LADBSWeb/LADBS_Forms/Publications/LAGreenBuildingCodeOrdinance.pdf).

provided at the onsite truck stop for truckers to plug in any onboard auxiliary equipment. At a minimum, electrical panels should be appropriately sized to allow for future expanded use.

- Design the Proposed Project such that entrances and exits are such that trucks are not traversing past neighbors or other sensitive receptors.
- Design the Proposed Project such that any check-in point for trucks is well inside the Proposed Project site to ensure that there are no trucks queuing outside of the facility.
- Design the Proposed Project to ensure that truck traffic within the Proposed Project site is located away from the property line(s) closest to its residential or sensitive receptor neighbors.
- Restrict overnight parking in residential areas.
- Establish overnight parking within the Proposed Project where trucks can rest overnight.
- Establish area(s) within the Proposed Project site for repair needs.
- Develop, adopt and enforce truck routes both in and out of city, and in and out of facilities.
- Create a buffer zone of at least 300 meters (roughly 1,000 feet), which can be office space, employee parking, greenbelt, etc. between the Proposed Project and sensitive receptors.

Additional mitigation measures for operational air quality impacts from other area sources that the Lead Agency should consider in the Draft EIR may include the following:

- Maximize use of solar energy including solar panels.
- Install the maximum possible number of solar energy arrays on the building roofs and/or on the project site to generate solar energy for the facility and/or EV charging stations.
- Maximize the planting of trees in landscaping and parking lots.
- Use light colored paving and roofing materials.
- Utilize only Energy Star heating, cooling, and lighting devices, and appliances.
- Require use of electric or alternatively fueled sweepers with HEPA filters.
- Use of water-based or low VOC cleaning products that go beyond the requirements of South Coast AQMD Rule 1113.

### **Alternative**

In the event that the Proposed Project generates significant adverse air quality impacts, CEQA requires the consideration and discussion of alternatives to the project or its location which are capable of avoiding or substantially lessening any of the significant effects of the project. The discussion of a reasonable range of potentially feasible alternatives, including a “no project” alternative, is intended to foster informed decision-making and public participation. Pursuant to CEQA Guidelines Section 15126.6(d), the Draft EIR shall include sufficient information about each alternative to allow meaningful evaluation, analysis, and comparison with the Proposed Project.

### **Permits and South Coast AQMD Rules**

In the event that implementation of the Proposed Project requires a permit from South Coast AQMD, South Coast AQMD should be identified as a Responsible Agency for the Proposed Project. The assumptions in the air quality analysis in the Final EIR will be the basis for permit conditions and limits. For more information on permits, please visit South Coast AQMD’s webpage at: <http://www.aqmd.gov/home/permits>. Questions on permits can be directed to South Coast AQMD’s Engineering and Permitting staff at (909) 396-3385.

### **Data Sources**

South Coast AQMD rules and relevant air quality reports and data are available by calling South Coast AQMD’s Public Information Center at (909) 396-2001. Much of the information available through the Public Information Center is also available at South Coast AQMD’s webpage at: <http://www.aqmd.gov>.

South Coast AQMD staff is available to work with the Lead Agency to ensure that project air quality and health risk impacts are accurately evaluated and mitigated where feasible. If you have any questions regarding this letter, please contact me at [lsun@aqmd.gov](mailto:lsun@aqmd.gov).

Sincerely,

*Lijin Sun*

Lijin Sun, J.D.

Program Supervisor, CEQA IGR

Planning, Rule Development & Area Sources

LS

RVC200603-01

Control Number

JASON E. UHLEY  
General Manager-Chief Engineer



1995 MARKET STREET  
RIVERSIDE, CA 92501  
951.955.1200  
FAX 951.788.9965  
www.rcflood.org

## RIVERSIDE COUNTY FLOOD CONTROL AND WATER CONSERVATION DISTRICT

231389

May 27, 2020

City of Beaumont  
550 East 6<sup>th</sup> Street  
Beaumont, CA 92223

Attention: Christina Taylor

Re: Potrero Logistics Center  
APN 424-010-020 and 424-010-009

The Riverside County Flood Control and Water Conservation District (District) does not normally recommend conditions for land divisions or other land use cases in incorporated cities. The District also does not plan check City land use cases, or provide State Division of Real Estate letters or other flood hazard reports for such cases. District comments/recommendations for such cases are normally limited to items of specific interest to the District including District Master Drainage Plan facilities, other regional flood control and drainage facilities which could be considered a logical component or extension of a master plan system, and District Area Drainage Plan fees (development mitigation fees). In addition, information of a general nature is provided.

The District's review is based on the above-referenced project transmittal, received May 13, 2020. The District has not reviewed the proposed project in detail, and the following comments do not in any way constitute or imply District approval or endorsement of the proposed project with respect to flood hazard, public health and safety, or any other such issue:

- This project would not be impacted by District Master Drainage Plan facilities, nor are other facilities of regional interest proposed.
- This project involves District proposed Master Drainage Plan facilities, namely \_\_\_\_\_. The District will accept ownership of such facilities on written request of the City. Facilities must be constructed to District standards, and District plan check and inspection will be required for District acceptance. Plan check, inspection, and administrative fees will be required.
- This project proposes channels, storm drains 36 inches or larger in diameter, or other facilities that could be considered regional in nature and/or a logical extension of the adopted Beaumont Master Drainage Plan. The District would consider accepting ownership of such facilities on written request of the City. Facilities must be constructed to District standards, and District plan check and inspection will be required for District acceptance. Plan check, inspection, and administrative fees will be required.
- An encroachment permit shall be obtained for any construction related activities occurring within District right of way or facilities, namely, \_\_\_\_\_. For further information, contact the District's encroachment permit section at 951.955.1266.
- The District's previous comments are still valid.

May 27, 2020

City of Beaumont

Re: Potrero Logistics Center  
APN 424-010-020 and 424-010-009

231389

**GENERAL INFORMATION**

This project may require a National Pollutant Discharge Elimination System (NPDES) permit from the State Water Resources Control Board. Clearance for grading, recordation, or other final approval should not be given until the City has determined that the project has been granted a permit or is shown to be exempt.

If this project involves a Federal Emergency Management Agency (FEMA) mapped floodplain, then the City should require the applicant to provide all studies, calculations, plans, and other information required to meet FEMA requirements, and should further require that the applicant obtain a Conditional Letter of Map Revision (CLOMR) prior to grading, recordation, or other final approval of the project and a Letter of Map Revision (LOMR) prior to occupancy.

If a natural watercourse or mapped floodplain is impacted by this project, the City should require the applicant to obtain a Section 1602 Agreement from the California Department of Fish and Wildlife and a Clean Water Act Section 404 Permit from the U.S. Army Corps of Engineers, or written correspondence from these agencies indicating the project is exempt from these requirements. A Clean Water Act Section 401 Water Quality Certification may be required from the local California Regional Water Quality Control Board prior to issuance of the Corps 404 permit.

Very truly yours,



DEBORAH DE CHAMBEAU  
Engineering Project Manager

c: Riverside County Planning Department  
Attn: John Hildebrand

SLJ:blm



Hans W. Kernkamp, General Manager-Chief Engineer

May 14, 2020

Ms. Christina Taylor  
Community Development Director  
City of Beaumont  
550 East 6<sup>th</sup> Street  
Beaumont CA, 92223

**RE: Notice of Preparation (NOP) of a Draft Environmental Impact Report (DEIR) for the City of Beaumont Potrero Logistics Center**

Dear Ms. Taylor:

The Riverside County Department of Waste Resources (RCDWR) has reviewed the NOP addressing a DEIR for the City of Beaumont (City) Potrero Logistics Center (Project). The RCDWR offers the following comments for your consideration while preparing the Project's DEIR.

1. Build-out of the Project may have the potential to increase the amount of waste that could adversely affect solid waste facilities. To assess waste impacts, the DEIR should include the projected maximum amount of waste generated from build-out of the Project, using appropriate waste generation factors.

Note- CalRecycle's website may be helpful to determine the Project's waste generation:  
<https://www2.calrecycle.ca.gov/WasteCharacterization/General/Rates>

2. The following information can be useful in the analysis of the solid waste impacts:
  - a) Solid waste generated within the Project area is collected by Waste Management Inc. (WMI), with the bulk of recyclable waste and green waste delivered to the Moreno Valley Solid Waste Recycling and Transfer Facility (MVTS) for processing. The MVTS is located at 17700 Indian Street in Moreno Valley. It is permitted for a 2,500-tpd operation.
  - b) While the Lamb Canyon Landfill is the closest landfill to Project site, the City's waste hauler could also use the Badlands Landfill and the El Sobrante Landfill for disposal of the City's residual waste. Descriptions of the local landfills are provided below:

Lamb Canyon Landfill

The Lamb Canyon Landfill is located between the City of Beaumont and City of San Jacinto at 16411 Lamb Canyon Road (State Route 79), south of Interstate 10 and north of Highway 74. The landfill is owned and operated by Riverside County. The landfill property encompasses approximately 1,189 acres, of which 703.4 acres encompass the current landfill permit area. Of the 703.4-acre landfill permit area, approximately 144.6 acres are permitted for waste disposal. The landfill is currently permitted to receive 5,000 tpd of MSW for disposal and 500 tpd for beneficial reuse. The site has an estimated total

disposal capacity of approximately 20.7 million tons.<sup>1</sup> As of January 1, 2020 (beginning of day), the landfill has a total remaining capacity of approximately 8.7 million tons<sup>2</sup>. The current landfill remaining disposal capacity is estimated to last, at a minimum, until approximately 2029.<sup>3</sup> From January 2019 to December 2019, the Lamb Canyon Landfill accepted a daily average of 1,925 tons with a period total of approximately 591,125 tons. Landfill expansion potential exists at the Lamb Canyon Landfill site.

### Badlands Landfill

The Badlands Landfill is located northeast of the City of Moreno Valley at 31125 Ironwood Avenue and accessed from State Highway 60 at Theodore Avenue. The landfill is owned and operated by Riverside County. The existing landfill encompasses 1,168.3 acres, with a total permitted disturbance area of 278 acres, of which 150 acres are permitted for refuse disposal. The landfill is currently permitted to receive 4,500 tpd of MSW for disposal and 300 tpd for beneficial reuse. The site has an estimated total capacity of approximately 20.5 million tons<sup>4</sup>. As of January 1, 2020 (beginning of day), the landfill had a total remaining disposal capacity of approximately 5.1 million tons.<sup>5</sup> The current landfill remaining disposal capacity is estimated to last, at a minimum, until approximately 2022.<sup>6</sup> From January 2019 to December 2019, the Badlands Landfill accepted a daily average of 2,878 tons with a period total of approximately 886,388 tons. Landfill expansion potential exists at the Badlands Landfill site.

### EI Sobrante Landfill

The EI Sobrante Landfill is located east of Interstate 15 and Temescal Canyon Road to the south of the City of Corona and Cajalco Road at 10910 Dawson Canyon Road. The landfill is owned and operated by USA Waste of California, a subsidiary of Waste Management, Inc., and encompasses 1,322 acres, of which 645 acres are permitted for landfill operation. The EI Sobrante Landfill has a total disposal capacity of approximately 209.9 million cubic yards and can receive up to 70,000 tons per week (tpw) of refuse. USA Waste must allot at least 28,000 tpw for County refuse. The landfill's permit allows a maximum of 16,054 tons per day (tpd) of waste to be accepted into the landfill, due to the limits on vehicle trips. If needed, 5,000 tpd must be reserved for County waste, leaving the maximum commitment of Non-County waste at 11,054 tpd. Per the 2018 Annual Report, the landfill had a remaining in-County disposal capacity of approximately 53.8 million tons.<sup>7</sup> In 2018, the EI Sobrante Landfill accepted a daily average of 11,031 tons with a period total of approximately 3,386,471 tons. The landfill is expected to reach capacity in approximately 2060.

---

<sup>1</sup> GASB 18\_2019 – Engineering Estimate for total landfill capacity

<sup>2</sup> GASB 18\_2019 & SiteInfo

<sup>3</sup> SWFP # 33-AA-0007

<sup>4</sup> GASB\_18\_2019 – Engineering Estimate for total landfill capacity

<sup>5</sup> GASB\_18\_2019 & SiteInfo

<sup>6</sup> SWFP # 33-AA-0006

<sup>7</sup> 2018 EI Sobrante Landfill Annual Report- Based on 134,549,993 tons remaining capacity (40% for in-county waste).



3. Additionally, you may wish to consider incorporating the following measures to help reduce the Project's anticipated solid waste impacts and enhance the City's efforts to comply with the State's mandate of 50% solid waste diversion from landfilling:

- The use of mulch and/or compost in the development and maintenance of landscaped areas within the project boundaries is recommended. Recycle green waste through either onsite composting of grass, i.e., leaving the grass clippings on the lawn, or sending separated green waste to a composting facility.
- Consider xeriscaping and the use of drought tolerant low maintenance vegetation in all landscaped areas of the project.
- Hazardous materials are not accepted at the Riverside County landfills. Any hazardous wastes, including paint, used during construction must be properly disposed of at a licensed facility in accordance with local, state and federal regulations. For further information regarding the determination, transport, and disposal of hazardous waste, please contact the Riverside County Department of Health, Environmental Protection and Oversight Division, at 1.888.722.4234.
- AB 341 focuses on increased commercial waste recycling as a method to reduce greenhouse gas (GHG) emissions. The regulation requires businesses and organizations that generate four or more cubic yards of waste per week and multifamily units of 5 or more, to recycle. A business shall take at least one of the following actions in order to reuse, recycle, compost, or otherwise divert commercial solid waste from disposal:
  - Source separate recyclable and/or compostable material from solid waste and donate or self-haul the material to recycling facilities.
  - Subscribe to a recycling service with waste hauler.
  - Provide recycling service to tenants (if commercial or multi-family complex).
  - Demonstrate compliance with requirements of California Code of Regulations Title 14.

For more information, please visit:

<http://www.rcwaste.org/business/recycling/mcr>

- AB 1826 requires businesses and multifamily complexes to arrange for organic waste recycling services. Businesses subject to AB 1826 shall take at least one of the following actions in order to divert organic waste from disposal:
  - Source separate organic material from all other recyclables and donate or self-haul to a permitted organic waste processing facility.

Christina Taylor  
Community Development Director  
NOP DEIR- City of Beaumont Potrero Logistics Center  
May 14, 2020  
Page 4

- Enter into a contract or work agreement with gardening or landscaping service provider or refuse hauler to ensure the waste generated from those services meet the requirements of AB 1826.

Thank you for allowing us the opportunity to comment on the NOP. We would appreciate a copy of the Draft EIR on CD for review and comment when available. Please continue to include the RCDWR in future transmittals. Please contact me at [khesterl@rivco.org](mailto:khesterl@rivco.org) or (951) 486-3283 if you have any questions regarding the above comments.

Sincerely,



Kinika Hesterly  
Urban/Regional Planner IV

PD# 256849

**From:** [Christina Taylor](#)  
**To:** [Cano, Kari](#)  
**Subject:** Fwd: Potrero Logistics Center  
**Date:** Thursday, May 21, 2020 4:53:00 PM

---

See below from RTA

CHRISTINA TAYLOR  
Community Development Director  
City of Beaumont  
550 E. 6th Street, Beaumont, Ca 92223  
Desk (951) 572-3212 | Fax (951) 769-8526  
BeaumontCa.gov  
Facebook | Twitter | Instagram | YouTube

#ACITYELEVATED

---

**From:** Mauricio Alvarez <malvarez@riversidetransit.com>  
**Sent:** Thursday, May 21, 2020 4:04:48 PM  
**To:** Christina Taylor <Ctaylor@beaumontca.gov>  
**Subject:** Potrero Logistics Center

Hello Christina,

RTA has reviewed the plans you have sent and we have no comments on this particular project.

Also, I am the point of contact for all development reviews at RTA. Please add my name and email (malvarez@riversidetransit) to your contact list. For any mailings, please add my name on the label.

Thank you,

**Mauricio Alvarez, MBA**  
Planning Analyst  
Riverside Transit Agency  
p: 951.565.5260 | e: [malvarez@riversidetransit.com](mailto:malvarez@riversidetransit.com)  
[Website](#) | [Facebook](#) | [Twitter](#) | [Instagram](#)  
1825 Third Street, Riverside, CA 92507



## NATIVE AMERICAN HERITAGE COMMISSION

May 13, 2020

Christina Taylor  
City of Beaumont  
550 East 6th Street  
Beaumont, CA 92223

CHAIRPERSON  
**Laura Miranda**  
Luiseño

VICE CHAIRPERSON  
**Reginald Pagaling**  
Chumash

SECRETARY  
**Merri Lopez-Keifer**  
Luiseño

PARLIAMENTARIAN  
**Russell Atebery**  
Karuk

COMMISSIONER  
**Marshall McKay**  
Wintun

COMMISSIONER  
**William Mungary**  
Paiute/White Mountain  
Apache

COMMISSIONER  
**Julie Tumamait-**  
**Stenslie**  
Chumash

COMMISSIONER  
[Vacant]

COMMISSIONER  
[Vacant]

EXECUTIVE SECRETARY  
**Christina Snider**  
Pomo

**NAHC HEADQUARTERS**  
1550 Harbor Boulevard  
Suite 100  
West Sacramento,  
California 95691  
(916) 373-3710  
[nahc@nahc.ca.gov](mailto:nahc@nahc.ca.gov)  
[NAHC.ca.gov](http://NAHC.ca.gov)

**Re: 2020059016, Potirero Logistics Center EIR Project, Riverside County**

Dear Ms. Taylor:

The Native American Heritage Commission (NAHC) has received the Notice of Preparation (NOP), Draft Environmental Impact Report (DEIR) or Early Consultation for the project referenced above. The California Environmental Quality Act (CEQA) (Pub. Resources Code §21000 et seq.), specifically Public Resources Code §21084.1, states that a project that may cause a substantial adverse change in the significance of a historical resource, is a project that may have a significant effect on the environment. (Pub. Resources Code § 21084.1; Cal. Code Regs., tit.14, §15064.5 (b) (CEQA Guidelines §15064.5 (b))). If there is substantial evidence, in light of the whole record before a lead agency, that a project may have a significant effect on the environment, an Environmental Impact Report (EIR) shall be prepared. (Pub. Resources Code §21080 (d); Cal. Code Regs., tit. 14, § 5064 subd.(a)(1) (CEQA Guidelines §15064 (a)(1))). In order to determine whether a project will cause a substantial adverse change in the significance of a historical resource, a lead agency will need to determine whether there are historical resources within the area of potential effect (APE).

CEQA was amended significantly in 2014. Assembly Bill 52 (Gatto, Chapter 532, Statutes of 2014) (AB 52) amended CEQA to create a separate category of cultural resources, "tribal cultural resources" (Pub. Resources Code §21074) and provides that a project with an effect that may cause a substantial adverse change in the significance of a tribal cultural resource is a project that may have a significant effect on the environment. (Pub. Resources Code §21084.2). Public agencies shall, when feasible, avoid damaging effects to any tribal cultural resource. (Pub. Resources Code §21084.3 (a)). **AB 52 applies to any project for which a notice of preparation, a notice of negative declaration, or a mitigated negative declaration is filed on or after July 1, 2015.** If your project involves the adoption of or amendment to a general plan or a specific plan, or the designation or proposed designation of open space, on or after March 1, 2005, it may also be subject to Senate Bill 18 (Burton, Chapter 905, Statutes of 2004) (SB 18). **Both SB 18 and AB 52 have tribal consultation requirements.** If your project is also subject to the federal National Environmental Policy Act (42 U.S.C. § 4321 et seq.) (NEPA), the tribal consultation requirements of Section 106 of the National Historic Preservation Act of 1966 (154 U.S.C. 300101, 36 C.F.R. §800 et seq.) may also apply.

The NAHC recommends consultation with California Native American tribes that are traditionally and culturally affiliated with the geographic area of your proposed project as early as possible in order to avoid inadvertent discoveries of Native American human remains and best protect tribal cultural resources. Below is a brief summary of portions of AB 52 and SB 18 as well as the NAHC's recommendations for conducting cultural resources assessments.

**Consult your legal counsel about compliance with AB 52 and SB 18 as well as compliance with any other applicable laws.**

## AB 52

AB 52 has added to CEQA the additional requirements listed below, along with many other requirements:

- 1. Fourteen Day Period to Provide Notice of Completion of an Application/Decision to Undertake a Project:** Within fourteen (14) days of determining that an application for a project is complete or of a decision by a public agency to undertake a project, a lead agency shall provide formal notification to a designated contact of, or tribal representative of, traditionally and culturally affiliated California Native American tribes that have requested notice, to be accomplished by at least one written notice that includes:
  - a.** A brief description of the project.
  - b.** The lead agency contact information.
  - c.** Notification that the California Native American tribe has 30 days to request consultation. (Pub. Resources Code §21080.3.1 (d)).
  - d.** A "California Native American tribe" is defined as a Native American tribe located in California that is on the contact list maintained by the NAHC for the purposes of Chapter 905 of Statutes of 2004 (SB 18). (Pub. Resources Code §21073).
  
- 2. Begin Consultation Within 30 Days of Receiving a Tribe's Request for Consultation and Before Releasing a Negative Declaration, Mitigated Negative Declaration, or Environmental Impact Report:** A lead agency shall begin the consultation process within 30 days of receiving a request for consultation from a California Native American tribe that is traditionally and culturally affiliated with the geographic area of the proposed project. (Pub. Resources Code §21080.3.1, subs. (d) and (e)) and prior to the release of a negative declaration, mitigated negative declaration or Environmental Impact Report. (Pub. Resources Code §21080.3.1(b)).
  - a.** For purposes of AB 52, "consultation shall have the same meaning as provided in Gov. Code §65352.4 (SB 18). (Pub. Resources Code §21080.3.1 (b)).
  
- 3. Mandatory Topics of Consultation If Requested by a Tribe:** The following topics of consultation, if a tribe requests to discuss them, are mandatory topics of consultation:
  - a.** Alternatives to the project.
  - b.** Recommended mitigation measures.
  - c.** Significant effects. (Pub. Resources Code §21080.3.2 (a)).
  
- 4. Discretionary Topics of Consultation:** The following topics are discretionary topics of consultation:
  - a.** Type of environmental review necessary.
  - b.** Significance of the tribal cultural resources.
  - c.** Significance of the project's impacts on tribal cultural resources.
  - d.** If necessary, project alternatives or appropriate measures for preservation or mitigation that the tribe may recommend to the lead agency. (Pub. Resources Code §21080.3.2 (a)).
  
- 5. Confidentiality of Information Submitted by a Tribe During the Environmental Review Process:** With some exceptions, any information, including but not limited to, the location, description, and use of tribal cultural resources submitted by a California Native American tribe during the environmental review process shall not be included in the environmental document or otherwise disclosed by the lead agency or any other public agency to the public, consistent with Government Code §6254 (r) and §6254.10. Any information submitted by a California Native American tribe during the consultation or environmental review process shall be published in a confidential appendix to the environmental document unless the tribe that provided the information consents, in writing, to the disclosure of some or all of the information to the public. (Pub. Resources Code §21082.3 (c)(1)).
  
- 6. Discussion of Impacts to Tribal Cultural Resources in the Environmental Document:** If a project may have a significant impact on a tribal cultural resource, the lead agency's environmental document shall discuss both of the following:
  - a.** Whether the proposed project has a significant impact on an identified tribal cultural resource.
  - b.** Whether feasible alternatives or mitigation measures, including those measures that may be agreed to pursuant to Public Resources Code §21082.3, subdivision (a), avoid or substantially lessen the impact on the identified tribal cultural resource. (Pub. Resources Code §21082.3 (b)).

- 7. Conclusion of Consultation:** Consultation with a tribe shall be considered concluded when either of the following occurs:
- a.** The parties agree to measures to mitigate or avoid a significant effect, if a significant effect exists, on a tribal cultural resource; or
  - b.** A party, acting in good faith and after reasonable effort, concludes that mutual agreement cannot be reached. (Pub. Resources Code §21080.3.2 (b)).
- 8. Recommending Mitigation Measures Agreed Upon in Consultation in the Environmental Document:** Any mitigation measures agreed upon in the consultation conducted pursuant to Public Resources Code §21080.3.2 shall be recommended for inclusion in the environmental document and in an adopted mitigation monitoring and reporting program, if determined to avoid or lessen the impact pursuant to Public Resources Code §21082.3, subdivision (b), paragraph 2, and shall be fully enforceable. (Pub. Resources Code §21082.3 (a)).
- 9. Required Consideration of Feasible Mitigation:** If mitigation measures recommended by the staff of the lead agency as a result of the consultation process are not included in the environmental document or if there are no agreed upon mitigation measures at the conclusion of consultation, or if consultation does not occur, and if substantial evidence demonstrates that a project will cause a significant effect to a tribal cultural resource, the lead agency shall consider feasible mitigation pursuant to Public Resources Code §21084.3 (b). (Pub. Resources Code §21082.3 (e)).
- 10. Examples of Mitigation Measures That, If Feasible, May Be Considered to Avoid or Minimize Significant Adverse Impacts to Tribal Cultural Resources:**
- a.** Avoidance and preservation of the resources in place, including, but not limited to:
    - i.** Planning and construction to avoid the resources and protect the cultural and natural context.
    - ii.** Planning greenspace, parks, or other open space, to incorporate the resources with culturally appropriate protection and management criteria.
  - b.** Treating the resource with culturally appropriate dignity, taking into account the tribal cultural values and meaning of the resource, including, but not limited to, the following:
    - i.** Protecting the cultural character and integrity of the resource.
    - ii.** Protecting the traditional use of the resource.
    - iii.** Protecting the confidentiality of the resource.
  - c.** Permanent conservation easements or other interests in real property, with culturally appropriate management criteria for the purposes of preserving or utilizing the resources or places.
  - d.** Protecting the resource. (Pub. Resource Code §21084.3 (b)).
  - e.** Please note that a federally recognized California Native American tribe or a non-federally recognized California Native American tribe that is on the contact list maintained by the NAHC to protect a California prehistoric, archaeological, cultural, spiritual, or ceremonial place may acquire and hold conservation easements if the conservation easement is voluntarily conveyed. (Civ. Code §815.3 (c)).
  - f.** Please note that it is the policy of the state that Native American remains and associated grave artifacts shall be repatriated. (Pub. Resources Code §5097.991).
- 11. Prerequisites for Certifying an Environmental Impact Report or Adopting a Mitigated Negative Declaration or Negative Declaration with a Significant Impact on an Identified Tribal Cultural Resource:** An Environmental Impact Report may not be certified, nor may a mitigated negative declaration or a negative declaration be adopted unless one of the following occurs:
- a.** The consultation process between the tribes and the lead agency has occurred as provided in Public Resources Code §21080.3.1 and §21080.3.2 and concluded pursuant to Public Resources Code §21080.3.2.
  - b.** The tribe that requested consultation failed to provide comments to the lead agency or otherwise failed to engage in the consultation process.
  - c.** The lead agency provided notice of the project to the tribe in compliance with Public Resources Code §21080.3.1 (d) and the tribe failed to request consultation within 30 days. (Pub. Resources Code §21082.3 (d)).

The NAHC's PowerPoint presentation titled, "Tribal Consultation Under AB 52: Requirements and Best Practices" may be found online at: [http://nahc.ca.gov/wp-content/uploads/2015/10/AB52TribalConsultation\\_CalEPAPDF.pdf](http://nahc.ca.gov/wp-content/uploads/2015/10/AB52TribalConsultation_CalEPAPDF.pdf)

## SB 18

SB 18 applies to local governments and requires local governments to contact, provide notice to, refer plans to, and consult with tribes prior to the adoption or amendment of a general plan or a specific plan, or the designation of open space. (Gov. Code §65352.3). Local governments should consult the Governor's Office of Planning and Research's "Tribal Consultation Guidelines," which can be found online at: [https://www.opr.ca.gov/docs/09\\_14\\_05\\_Updated\\_Guidelines\\_922.pdf](https://www.opr.ca.gov/docs/09_14_05_Updated_Guidelines_922.pdf).

Some of SB 18's provisions include:

1. **Tribal Consultation:** If a local government considers a proposal to adopt or amend a general plan or a specific plan, or to designate open space it is required to contact the appropriate tribes identified by the NAHC by requesting a "Tribal Consultation List." If a tribe, once contacted, requests consultation the local government must consult with the tribe on the plan proposal. **A tribe has 90 days from the date of receipt of notification to request consultation unless a shorter timeframe has been agreed to by the tribe.** (Gov. Code §65352.3 (a)(2)).
2. **No Statutory Time Limit on SB 18 Tribal Consultation.** There is no statutory time limit on SB 18 tribal consultation.
3. **Confidentiality:** Consistent with the guidelines developed and adopted by the Office of Planning and Research pursuant to Gov. Code §65040.2, the city or county shall protect the confidentiality of the information concerning the specific identity, location, character, and use of places, features and objects described in Public Resources Code §5097.9 and §5097.993 that are within the city's or county's jurisdiction. (Gov. Code §65352.3 (b)).
4. **Conclusion of SB 18 Tribal Consultation:** Consultation should be concluded at the point in which:
  - a. The parties to the consultation come to a mutual agreement concerning the appropriate measures for preservation or mitigation; or
  - b. Either the local government or the tribe, acting in good faith and after reasonable effort, concludes that mutual agreement cannot be reached concerning the appropriate measures of preservation or mitigation. (Tribal Consultation Guidelines, Governor's Office of Planning and Research (2005) at p. 18).

Agencies should be aware that neither AB 52 nor SB 18 precludes agencies from initiating tribal consultation with tribes that are traditionally and culturally affiliated with their jurisdictions before the timeframes provided in AB 52 and SB 18. For that reason, we urge you to continue to request Native American Tribal Contact Lists and "Sacred Lands File" searches from the NAHC. The request forms can be found online at: <http://nahc.ca.gov/resources/forms/>.

### NAHC Recommendations for Cultural Resources Assessments

To adequately assess the existence and significance of tribal cultural resources and plan for avoidance, preservation in place, or barring both, mitigation of project-related impacts to tribal cultural resources, the NAHC recommends the following actions:

1. Contact the appropriate regional California Historical Research Information System (CHRIS) Center ([http://ohp.parks.ca.gov/?page\\_id=1068](http://ohp.parks.ca.gov/?page_id=1068)) for an archaeological records search. The records search will determine:
  - a. If part or all of the APE has been previously surveyed for cultural resources.
  - b. If any known cultural resources have already been recorded on or adjacent to the APE.
  - c. If the probability is low, moderate, or high that cultural resources are located in the APE.
  - d. If a survey is required to determine whether previously unrecorded cultural resources are present.
2. If an archaeological inventory survey is required, the final stage is the preparation of a professional report detailing the findings and recommendations of the records search and field survey.
  - a. The final report containing site forms, site significance, and mitigation measures should be submitted immediately to the planning department. All information regarding site locations, Native American human remains, and associated funerary objects should be in a separate confidential addendum and not be made available for public disclosure.
  - b. The final written report should be submitted within 3 months after work has been completed to the appropriate regional CHRIS center.

3. Contact the NAHC for:
  - a. A Sacred Lands File search. Remember that tribes do not always record their sacred sites in the Sacred Lands File, nor are they required to do so. A Sacred Lands File search is not a substitute for consultation with tribes that are traditionally and culturally affiliated with the geographic area of the project's APE.
  - b. A Native American Tribal Consultation List of appropriate tribes for consultation concerning the project site and to assist in planning for avoidance, preservation in place, or, failing both, mitigation measures.
  
4. Remember that the lack of surface evidence of archaeological resources (including tribal cultural resources) does not preclude their subsurface existence.
  - a. Lead agencies should include in their mitigation and monitoring reporting program plan provisions for the identification and evaluation of inadvertently discovered archaeological resources per Cal. Code Regs., tit. 14, § 15064.5(f) (CEQA Guidelines § 15064.5(f)). In areas of identified archaeological sensitivity, a certified archaeologist and a culturally affiliated Native American with knowledge of cultural resources should monitor all ground-disturbing activities.
  - b. Lead agencies should include in their mitigation and monitoring reporting program plans provisions for the disposition of recovered cultural items that are not burial associated in consultation with culturally affiliated Native Americans.
  - c. Lead agencies should include in their mitigation and monitoring reporting program plans provisions for the treatment and disposition of inadvertently discovered Native American human remains. Health and Safety Code § 7050.5, Public Resources Code § 5097.98, and Cal. Code Regs., tit. 14, § 15064.5, subdivisions (d) and (e) (CEQA Guidelines § 15064.5, subs. (d) and (e)) address the processes to be followed in the event of an inadvertent discovery of any Native American human remains and associated grave goods in a location other than a dedicated cemetery.

If you have any questions or need additional information, please contact me at my email address:  
[Andrew.Green@nahc.ca.gov](mailto:Andrew.Green@nahc.ca.gov).

Sincerely,



Andrew Green  
Staff Services Analyst

cc: State Clearinghouse



# Rincon Band of Luiseño Indians

## CULTURAL RESOURCES DEPARTMENT

---

One Government Center Lane | Valley Center | CA 92082  
(760) 749-1051 | Fax: (760) 749-8901 | [rincon-nsn.gov](http://rincon-nsn.gov)



June 5, 2020

**Sent via email: [ctaylor@beaumontca.gov](mailto:ctaylor@beaumontca.gov)**

Christina Taylor  
City of Beaumont  
550 E. 6<sup>th</sup> Street  
Beaumont, CA 92223

### **Re: Potrero Logistics Center**

Dear Ms. Taylor,

This letter is written on behalf of Rincon Band of Luiseño Indians, (“Rincon Band” or “Band”), a federally recognized Indian Tribe and sovereign government.

The Band has received the notification for the above referenced project. The location identified within project documents is not within the Band’s specific Area of Historic Interest (AHI).

At this time, we have no additional information to provide. We recommend that you directly contact a Tribe that is closer to the project and may have pertinent information.

Thank you for submitting this project for Tribal review. If you have additional questions or concerns, please do not hesitate to contact our office at your convenience at (760) 297-2635 or via electronic mail at [crd@rincon-nsn.gov](mailto:crd@rincon-nsn.gov).

Thank you for the opportunity to protect and preserve our cultural assets.

Sincerely,

*Deneen Pelton*

**Administrative Assistant II**  
**Culture Resource Department**  
[dpelton@rincon-nsn.gov](mailto:dpelton@rincon-nsn.gov)

---

Bo Mazzetti  
Chairman

Tishmall Turner  
Vice Chair

Laurie E. Gonzalez  
Council Member

Alfonso Kolb, Sr.  
Council Member

John Constantino  
Council Member



T 510.836.4200  
F 510.836.4205

1939 Harrison Street, Ste. 150  
Oakland, CA 94612

www.lozeaudrury.com  
richard@lozeaudrury.com

***VIA EMAIL***

May 27, 2020

Christina Taylor, Community Dev. Director  
City of Beaumont  
550 E. 6th Street  
Beaumont, CA 92223  
[Ctaylor@beaumontca.gov](mailto:Ctaylor@beaumontca.gov)

Steven Mehlman, City Clerk  
City of Beaumont  
550 E. 6th Street  
Beaumont, CA 92223  
[smehlman@beaumontca.gov](mailto:smehlman@beaumontca.gov)

**Re: CEQA and Land Notice Request for Portero Logistics Center (SCH 2020059016)**

Dear Ms. Taylor and Mr. Mehlman,

I am writing on behalf of Supporters Alliance for Environmental Responsibility (“SAFER”) regarding the project known as Portero Logistics Center (SCH 2020059016), including all actions related or referring to the proposed development of a 577,920 square foot high-cube logistics warehouse located on 32 acres at Portero Blvd. and 4th Street in Beaumont (“Project”).

We hereby request that the City of Beaumont (“City”) send by electronic mail, if possible or U.S. Mail to our firm at the address below notice of any and all actions or hearings related to activities undertaken, authorized, approved, permitted, licensed, or certified by the City and any of its subdivisions, and/or supported, in whole or in part, through contracts, grants, subsidies, loans or other forms of assistance from the City including, but not limited to the following:

- Notice of any public hearing in connection with the Project as required by California Planning and Zoning Law pursuant to Government Code Section 65091.
- Any and all notices prepared for the Project pursuant to the California Environmental Quality Act (“CEQA”), including, but not limited to:
  - Notices of any public hearing held pursuant to CEQA.
  - Notices of determination that an Environmental Impact Report (“EIR”) is required for the Project, prepared pursuant to Public Resources Code Section 21080.4.
  - Notices of any addenda prepared to a previously certified or approved EIR.
  - Notices of any scoping meeting held pursuant to Public Resources Code Section 21083.9.
  - Notices of preparation of an EIR or a negative declaration for the Project, prepared pursuant to Public Resources Code Section 21092.
  - Notices of availability of an EIR or a negative declaration for the Project, prepared pursuant to Public Resources Code Section 21152 and Section 15087 of Title 14 of the California Code of Regulations.
  - Notices of approval and/or determination to carry out the Project, prepared pursuant to Public Resources Code Section 21152 or any other provision of law.

May 27, 2020

CEQA and Land Notice Request for Portero Logistics Center (SCH 2020059016)

Page 2 of 2

- Notices of approval or certification of any EIR or negative declaration, prepared pursuant to Public Resources Code Section 21152 or any other provision of law.
- Notices of determination that the Project is exempt from CEQA, prepared pursuant to Public Resources Code section 21152 or any other provision of law.
- Notice of any Final EIR prepared pursuant to CEQA.
- Notice of determination, prepared pursuant to Public Resources Code Section 21108 or Section 21152.

Please note that we are requesting notices of CEQA actions and notices of any public hearings to be held under any provision of Title 7 of the California Government Code governing California Planning and Zoning Law. **This request is filed pursuant to Public Resources Code Sections 21092.2 and 21167(f), and Government Code Section 65092**, which requires agencies to mail such notices to any person who has filed a written request for them with the clerk of the agency's governing body.

In addition, we request that the City send to us via email or U.S. Mail a copy of all Planning Commission and City Council meetings and/or hearing agendas with Project information.

Please send notice by electronic mail, if possible or U.S. Mail to:

Richard Drury  
Stacey Osborne  
Komalpreet Toor  
Lozeau Drury LLP  
1939 Harrison Street, Suite 150  
Oakland, CA 94612  
510 836-4200  
[richard@lozeaudrury.com](mailto:richard@lozeaudrury.com)  
[stacey@lozeaudrury.com](mailto:stacey@lozeaudrury.com)  
[komal@lozeaudrury.com](mailto:komal@lozeaudrury.com)

Please call if you have any questions. Thank you for your attention to this matter.

Sincerely,



Stacey Osborne  
Paralegal  
Lozeau | Drury LLP