

Addendum
Initial Study/Mitigated Negative Declaration
TRACT MAP NO. 69651

Lead Agency:

City of Palmdale
38300 Sierra Highway
Palmdale, California 93550

Prepared by:

Tetra Tech, Inc
301 E. Vanderbilt Way, Suite 450
San Bernardino, California 92408

May 2024

Table of Contents

Section 1.0 Introduction 3

 1.1 Overview 3

 1.2 Purpose of an Addendum 3

 1.3 Scope and Content of The Addendum 4

Section 2.0 Project Background and Project Description 5

 2.1 Project Background 5

 2.2 Project Location and Environmental Setting 5

 2.3 Project Description 9

 2.4 Documents Incorporated by Reference 11

Section 3.0 Environmental Analysis 13

 3.1 Introduction 13

 3.2 Biological Resources 13

Section 4.0 References 17

List of Figures

Figure 1 Site Location Map 7

Figure 2 Site Plan 8

Appendix

Appendix A Western Joshua Tree Census for Tract Map 69651

SECTION 1.0 INTRODUCTION

1.1 OVERVIEW

This Addendum has been prepared in accordance with the California Environmental Quality Act (CEQA), as amended, to evaluate the potential impacts associated with development of Tract Map No. 69651 (project). The project site has been considered for single family residential development since the early 2000s. The original Tentative Tract Map (TTM) for the project site was submitted to the City of Palmdale on March 13, 2008. The original TTM proposed a 73 single-family residential subdivision with two detention basins. On April 3, 2008, the City of Palmdale adopted an Initial Study/Mitigated Negative Declaration (referred to as the “2008 IS/MND”) prepared for the project (City of Palmdale 2008). The Planning Commission approved the first discretionary three-year time extension for TTM 69651 identified as Time Extension No. 1, on June 8, 2017 (City of Palmdale 2020). A second and final three-year discretionary time extension for Tentative Tract Map 69651 was approved by the City of Palmdale Planning Commission on July 9, 2020. A Notice of Determination (State Clearinghouse Number 2020070203) identified that the time extension was determined to be consistent with the 2008 IS/MND (City of Palmdale 2020). The final map was approved by the Palmdale City Council on July 12, 2023, and recorded with the County of Los Angeles on October 11, 2023.

On September 22, 2020, the California Fish and Game Commission listed the western Joshua tree (*Yucca brevifolia*) (Joshua tree) as a Candidate species, which protects the species under the California Endangered Species Act. In addition, Western Joshua Tree Conservation Act (WJTCA) further described in Section 2a was enacted in 2023 and prohibits importation, export, take, possession, purchase, or sale of any western Joshua tree in California unless authorized by CDFW (California Code of Regulations 2023). Because there are Joshua trees on the site, an Addendum is necessary to address potential environmental impacts to Joshua trees located on the project site based on the species new listed status.

1.2 PURPOSE OF AN ADDENDUM

According to Section 15164 of the CEQA Guidelines, an addendum to a previously certified environmental impact report (EIR) or adopted negative declaration shall be prepared by a lead or responsible agency if changes or additions to the document are necessary but none of the conditions described in Section 15162 requiring the preparation of a subsequent EIR or negative declaration are applicable. An addendum need not be circulated for public review but can be included in or attached to the final EIR or adopted negative declaration. The decision-making body considers the addendum with the final EIR or negative declaration prior to making a decision on the project, as modified.

Section 15162 of the CEQA Guidelines state that, for a project covered by a certified EIR or adopted negative declaration, preparation of a subsequent EIR or negative declaration is required if one or more of the following conditions occur.

1. *Substantial changes are proposed in the project which will require major revision of the previous EIR or negative declaration due to the involvement of new significant environmental effects or a substantial increase in the severity of previously identified significant effects;*

2. *Substantial changes occur with respect to the circumstances under which the project is undertaken which will require major revision of the previous EIR or negative declaration due to the involvement of new significant environmental increase in the severity of previously identified significant effects; or*

3. *New information of substantial importance, which was not known and could not have been known with the exercise of reasonable diligence at the time the previous EIR was certified as complete or the negative declaration was adopted, shows any of the following:*
 - (a) *The project will have one or more significant effects not discussed in the previous EIR or negative declaration;*

 - (b) *Significant effects previously examined will be substantially more severe than shown in the previous EIR;*

 - (c) *Mitigation measures or alternatives previously found not to be feasible would in fact be feasible, and would substantially reduce one or more significant effects of the project, but the project proponents decline to adopt the mitigation measure or alternative; or*

 - (d) *Mitigation measures or alternatives which are considerably different from those analyzed in the previous EIR would substantially reduce one or more significant effects on the environment, but the project proponents decline to adopt the mitigation measure or alternative.*

If none of these circumstances are present, and only minor technical changes or additions are necessary to update the previously certified EIR, an Addendum may be prepared, consistent with CEQA Guidelines Section 15164.

Furthermore, no new information, which was not known and could not have been known at the time of the 2008 IS/MND preparation, has been revealed that shows new or substantially greater significant impacts would result (CEQA Guidelines Section 15162[a][3]). There are no new or different mitigation measures or alternatives that would substantially reduce impacts identified in the adopted 2008 IS/MND. While an Incidental Take Permit (ITP) is required from the CDFW given the presence of a Candidate special status species on the project site (western Joshua tree), implementation of an ITP and the payment of requisite mitigation fees does not require major revisions to the 2008 IS/MND.

1.3 SCOPE AND CONTENT OF THE ADDENDUM

This Addendum has been prepared in accordance with the requirements of CEQA (Public Resources Code Section 21000 et seq.) and the CEQA Guidelines (Title 14 California Code of Regulations Section 15000 et seq.). This Addendum considers the environmental impacts associated with biological resources analyzed in the 2008 IS/MND and focuses on determining whether the Candidate status of Joshua tree would result in any new impacts not previously considered in the prior IS/MND. The project is essentially the same as described in the 2008 IS/MND except that Joshua tree plants have been identified as Candidate species for listing in the California Endangered Species Act. In 2023, the WJTCA was enacted that prohibits importation, export, take, possession, purchase, or sale of any western Joshua tree in California

unless authorized by CDFW (California Code of Regulations 2023). The analysis for all other resources in the 2008 IS/MND remain unchanged, and no new analysis is needed.

SECTION 2.0 PROJECT BACKGROUND AND PROJECT DESCRIPTION

2.1 PROJECT BACKGROUND

The original Tract Map 69651 for residential development of the project site was submitted to the City in 2007. On April 3, 2008, the City of Palmdale adopted an Initial Study/Mitigated Negative Declaration (referred to as the “2008 IS/MND”) prepared for the project. The Planning Commission approved the first discretionary three-year time extension for TTM 69651 identified as Time Extension No. 1 on June 8, 2017 (City of Palmdale 2020). A second and final three-year discretionary time extension for Tentative Tract Map 69651 was approved by the City of Palmdale Planning Commission on July 9, 2020 (A Notice of Determination (State Clearinghouse Number 2020070203) identified that the time extension was determined to be consistent with the 2008 IS/MND (City of Palmdale 2020). All grading and improvement plans were approved by the City of Palmdale in early 2023. The final map was approved by the Palmdale City Council on July 12, 2023, and recorded with the County of Los Angeles on October 11, 2023.

2.2 PROJECT LOCATION AND ENVIRONMENTAL SETTING

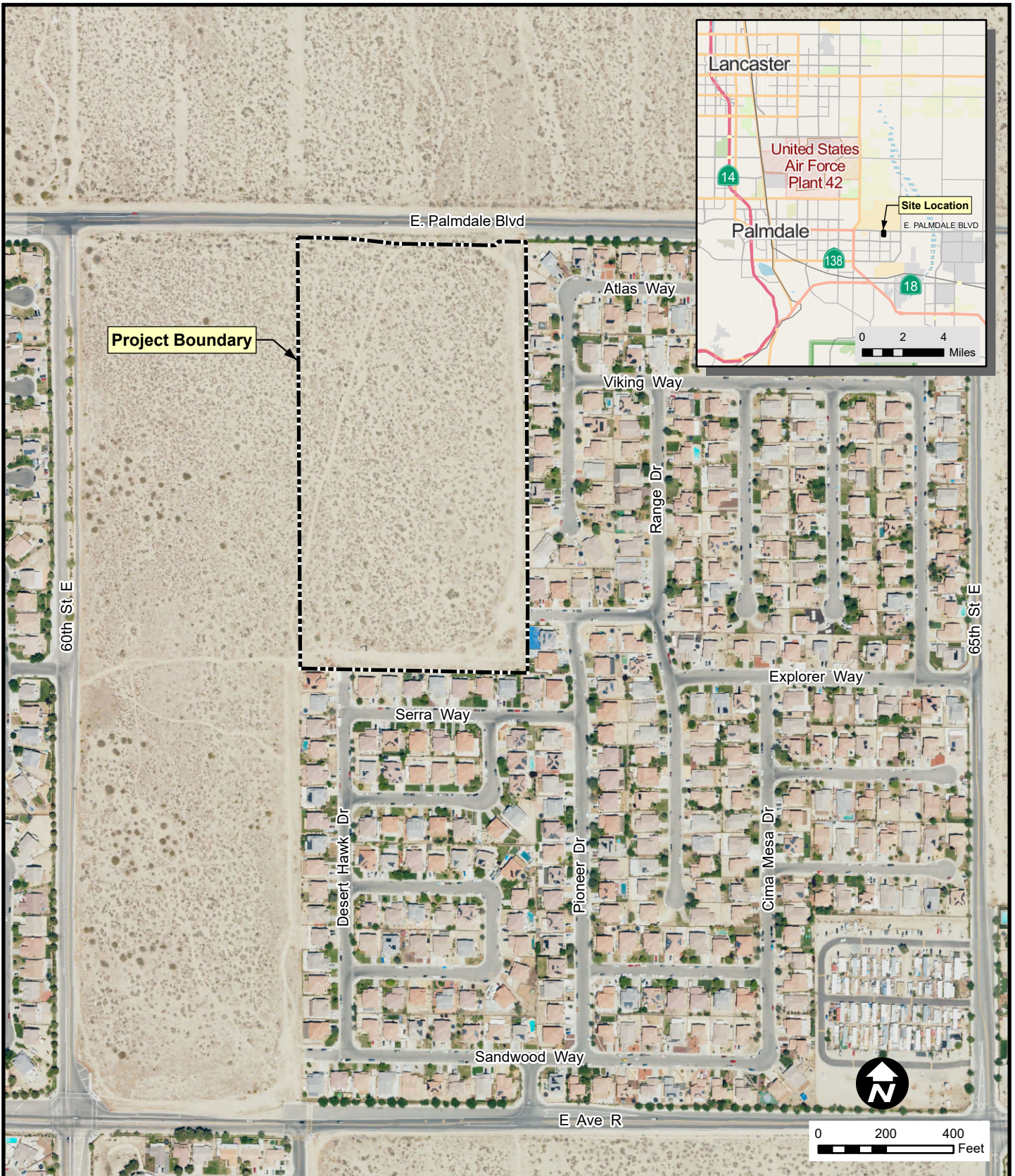
The City of Palmdale (City) is located in the northern portion of the County of Los Angeles in the High Desert region, approximately 60 miles north of downtown Los Angeles (Figure 1). The City encompasses approximately 95 square miles and has an adopted sphere of influence consisting of 174 square miles. Palmdale is surrounded by the City of Lancaster and unincorporated community of Quartz Hill to the north; unincorporated communities of Lake Los Angeles and Littlerock to the east; the unincorporated community of Acton to the south; and the unincorporated community of Leona Valley to the west.

Due to the Joshua tree recently being listed as a Candidate species by the California Fish and Game Commission (2020), an evaluation of the Joshua trees present at the site has been prepared to determine potential impacts to the population and to determine mitigation measures for loss of Joshua trees at the site prior to site clearance and is found as Appendix A (RCA Associates, Inc. 2024).

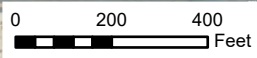
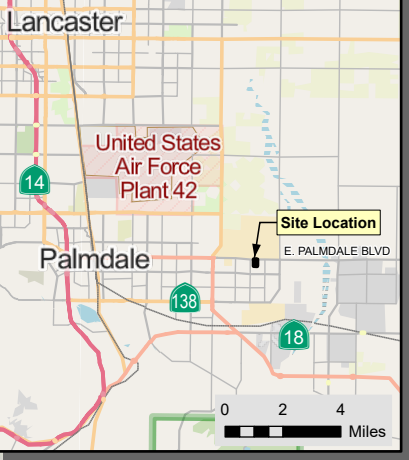
The Tract Map No. 69651 site encompasses an approximately 19.84-gross acre rectangularly shaped parcel located on Assessor’s Parcel Numbers (APNs) 3024-008-018 and -021 (Figure 2). Regional access to the project site is provided via State Route 14 (SR-14) and State Route 138 (SR-138). Local access to the project site is provided via East Palmdale Boulevard. The project site is located south of East Palmdale Boulevard approximately 750 feet east of 60th Street East (Figure 2). The project site is currently undeveloped desert scrub habitat that includes Joshua trees. Topographically, the project site is relatively flat sloping gently toward the north-northwest. The site is bisected by several dirt roads.

Based on the *Palmdale General Plan* (General Plan) Land Use Map (City of Palmdale 2023b), the project site is designated Single Family Residential (SFR-3). Based on the City’s Zoning Map, the project site is zoned Single Family Residential 3 (SFR 3). This place type is intended for detached single-family subdivisions containing the City’s standard 7,000 square foot minimum lot size (approximately 6 dwelling units per acre). The SFR 3 designation is appropriate in areas with minimal topography, and these places serve as a lower intensity, family-living environment but are still well connected to surrounding

neighborhoods and retail areas. These areas constitute most of the City's developed residential neighborhoods. Primary land uses include single-family residential dwellings plus park and recreation facilities. Secondary uses include community assembly uses such as places of worship, schools, and public facilities which are determined to be compatible with and oriented toward serving needs of these neighborhoods (City of Palmdale 2022a). Allowable density for SFR 3 developments is up to 6 dwelling units per acre and building types are typically ranch-style detached houses (City of Palmdale 2023).



Project Boundary

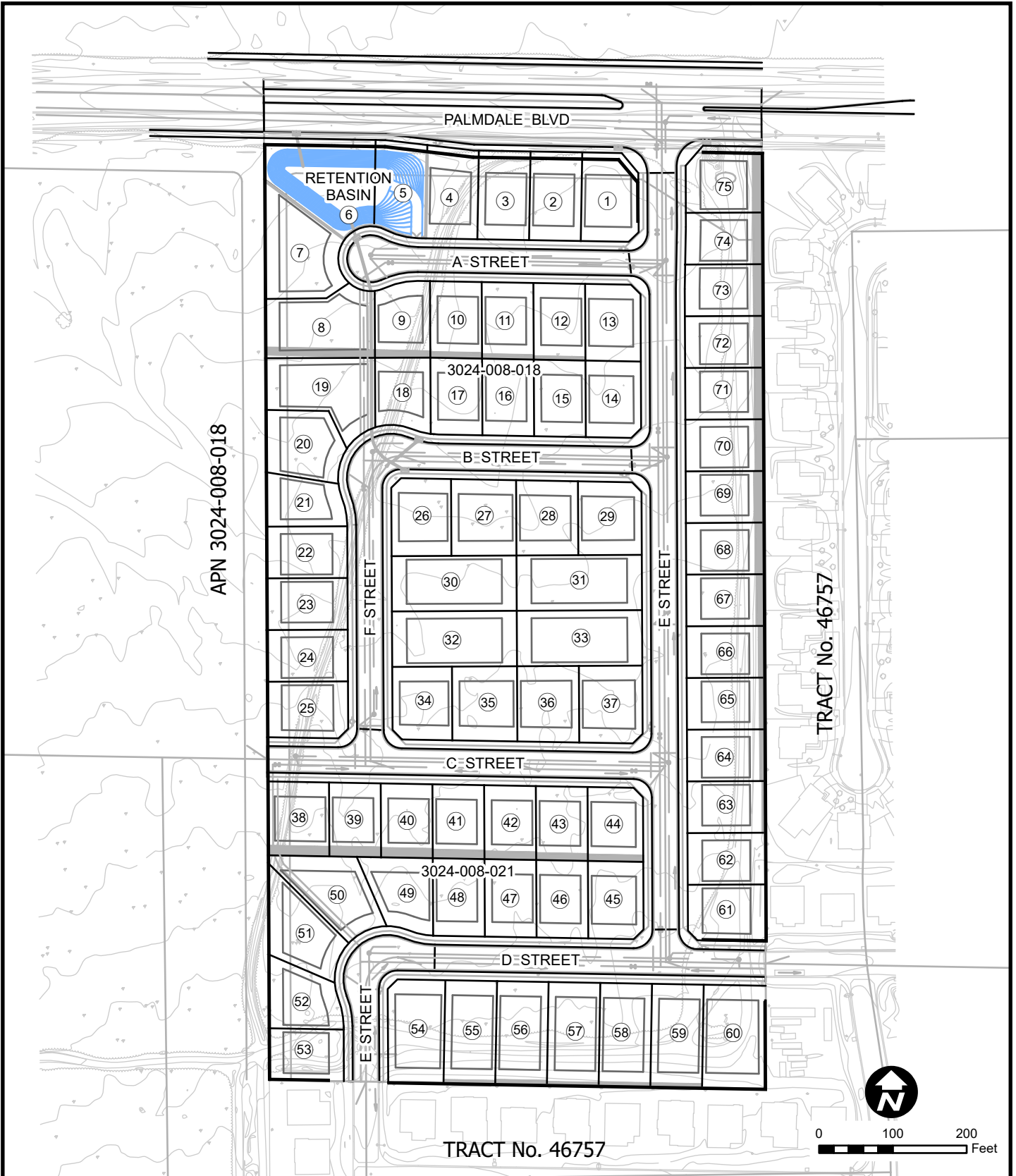


 Project Boundary

TRACT MAP 69651

Figure 1
Site Location Map





Base map adapted from Stantec, April, 2017

TRACT MAP 69651

Figure 2 Site Plan



Surrounding land uses include a mixture of vacant land and residential, and public facility uses. Specifically, land uses surrounding the project site are as follows:

Direction from Project Site	Land Use
North	East Palmdale Boulevard is located on the northern boundary of the site. Land north of Palmdale Boulevard is located within unincorporated Los Angeles County and is currently vacant
South	Existing single family residential development zoned Single-Family Residential 3 (SFR3)
East	Existing single family residential development zoned Single-Family Residential 3 (SFR3)
West	Vacant land zone Neighborhood Commercial (NC) and existing single family residential development zoned Single-Family Residential 3 (SFR3)

2.3 PROJECT DESCRIPTION

The project proposes a 19.84- acre, 75-lot single family residential subdivision with 73 single family lots ranging from approximately 7,002 to 15,436 square feet and one detention basin that would be constructed in two lots in the northwest corner of the site (Figure 2). The project would also include grubbing of existing vegetation and rough grading of the entire site, roadways for the interior of the site plus improvements to existing East Palmdale Boulevard, sidewalks, landscaping, walls/fences, street lighting, and relevant infrastructure (water, sewer, storm drain facilities, electrical, telecommunication, internet). Access to the project site would be provided from one access point along East Palmdale Boulevard. Street improvements along the project frontages include paving, median, sidewalk, curb and gutters along East Palmdale Boulevard. Roads within the site would connect to existing streets associated with the adjacent residential developments (Figure 2). Construction is anticipated to begin in 2024 and would be completed in one phase lasting approximately 36 months.

Off-Site Improvements. Street improvements along the Project frontages include paving, median, sidewalks, curbs and gutters along East Palmdale Blvd. and along the eastern boundary of the site. No widening is proposed along East Palmdale Blvd., which is a paved road. Proposed improvements include the following.

- Construct curb/gutter, sidewalk, planting strips, and pavement along the Project’s frontage per City standards.
- Construct driveways off of East Palmdale Blvd. at locations specified on the site plan per the City’s driveway standards.

Landscaping and Hardscape. Landscaping is designed primarily for the frontage along East Palmdale Blvd. and along internal access roads. Landscaping will include a mix of a variety of shrub and tree species as well as drought tolerant ground cover and shrubs.

Fenestration and Glazing. Exterior surfaces of the proposed single-family dwellings would be finished with a combination of architectural coatings, trim, and/or other building materials. Windows would consist of

low reflective glass. The building materials are designed to ensure that glare does not create a nuisance to on- and off-site viewers of the Project site.

Site Lighting. Site lighting will be low-level light emitting diode (LED) that will be pointed downward and/or along the edges of the internal roads.

Stormwater Management. The existing drainage patterns were identified, and the project design preserves the overall drainage pattern. The drainage design treats the Project Site area as a single drainage area. Lots 5 and 6 in the northwestern corner of the site, will consist of a detention basin (Figure 2). Runoff will be conveyed via proposed curb and gutters and captured by proposed inlets throughout the site. Runoff will be conveyed via proposed private storm drains to proposed detention basin in the northwest corner of the site. Runoff from larger storm events will overflow and be directed into the detention basin.

Utilities. The following utilities and services would serve the project site:

- Water. Potable water for the project site would be provided by the Palmdale Water District.
- Sewer. The project site would be served by the City of Palmdale Department of Public Works Sewer Maintenance.-Project-related wastewater would be treated at the Palmdale Water Reclamation Plant located at 39300 30th Street East, Palmdale California 93550. The Palmdale Water Reclamation facility is part of the Los Angeles County Sanitation District.
- Drainage. Stormwater flow generated on site would be managed with on-site stormwater management systems and excess stormwater flow would be directed to the detention pond located in the northwestern corner of the site.
- Other Utilities. Electricity and natural gas services would be provided by Southern California Edison and Southern California Gas Company (Sempra), respectively. Telephone services would be provided by AT&T. Telecommunications/internet would be provided by Spectrum

2.4 DOCUMENTS INCORPORATED BY REFERENCE

The following documents were utilized during preparation of this Addendum and are incorporated into this document by reference. The documents are available for review at the City of Palmdale, Economic and Community Development Department–Planning Division, 38250 Sierra Highway, Palmdale, California 93550.

Palmdale General Plan (2023). The Palmdale General Plan (General Plan) currently consists of the following elements: land use, circulation, conservation, open space, housing, noise, air quality, safety, and environmental justice. The General Plan is a City of Palmdale document required by state law that provides “long term, comprehensive, integrated, internally consistent and compatible statement” of goals and policies that reflect local conditions and community vision (City of Palmdale 2023a). The General Plan is available for review at <https://palmdale2045.org/>.

Palmdale General Plan Update Environmental Impact Report (EIR) (July 2022). The Palmdale General Plan Update EIR (General Plan Update EIR) evaluates the impacts associated with implementation of the General Plan. The General Plan Update EIR evaluates potential environmental impacts and identifies mitigation measures to reduce or avoid possible environmental damage. The environmental effects of the proposed project, along with recommended mitigation measures, are discussed in the General Plan Update EIR. The following environmental issues were determined to be less than significant, or could be reduced to less than significant with the incorporation of mitigation measures (City of Palmdale 2022):

- Aesthetics
- Agricultural and Forestry Resources
- Biological Resources
- Energy
- Geology and Soils
- Greenhouse Gas Emissions
- Hazards and Hazardous Materials
- Hydrology and Water Quality
- Land Use and Planning
- Mineral Resources
- Noise
- Population and Housing
- Public Services
- Recreation
- Transportation
- Tribal Cultural Resources
- Wildfire

The following environmental issues were determined to result in potential significant and unavoidable impacts:

- Air Quality: increase in ozone and criteria air pollutants beyond local and state thresholds.
- Cultural Resources: substantial adverse change in the significance of a historical resource.

- Utilities and Service Systems: insufficient water supplies available to serve the Planning Area and reasonably foreseeable future development.
- City of Palmdale Municipal Code (Current through Ordinance 1693, passed February 7, 2024). The Palmdale Municipal Code (Municipal Code) provides regulations for government administrative operations, construction, development, infrastructure, public safety, and business operations within the City. The Zoning ordinance (Title 17 of the Municipal Code) is intended to serve the public health, safety, and general welfare and to preserve and enhance the quality of life within the City of Palmdale by establishing standards to ensure that an appropriate mix of land uses is developed in an orderly manner (City of Palmdale 2024). I

SECTION 3.0 ENVIRONMENTAL ANALYSIS

3.1 INTRODUCTION

As development of the site would be similar to one approved in 2008, no new or substantial change in previously identified impact would occur. Therefore, the analysis in this Addendum is restricted to Biological Resources only to address impacts associated with that change in status of Joshua tree.

3.2 BIOLOGICAL RESOURCES

Would the project:	Potentially Significant Impact	Less Than Significant With Mitigation Incorporated	Less Than Significant Impact	No Impact
a) Have a substantial adverse effect, either directly or through habitat modification, on any species identified in local or regional plans, policies, or regulations, or by the California Department of Fish and Wildlife or U.S. Fish and Wildlife Service?	<input type="checkbox"/>	<input checked="" type="checkbox"/>	<input type="checkbox"/>	<input type="checkbox"/>
b) Have a substantial adverse effect on any riparian habitat or other sensitive natural community identified in local or regional plans, policies, regulations, or by the California Department of Fish and Wildlife or U.S. Fish and Wildlife Service?	<input type="checkbox"/>	<input checked="" type="checkbox"/>	<input type="checkbox"/>	<input type="checkbox"/>
c) Have a substantial adverse effect on federally protected wetlands (including, but not limited to, marsh, vernal pool, coastal, etc.) through direct removal, filling, hydrological interruption, or other means?	<input type="checkbox"/>	<input type="checkbox"/>	<input type="checkbox"/>	<input checked="" type="checkbox"/>
d) Interfere substantially with the movement of any native resident or migratory fish or wildlife species or with established native resident or migratory wildlife corridors, or impede the use of native wildlife nursery sites?	<input type="checkbox"/>	<input type="checkbox"/>	<input type="checkbox"/>	<input checked="" type="checkbox"/>
e) Conflict with any local policies or ordinances protecting biological resources, such as a tree preservation policy or ordinance?	<input type="checkbox"/>	<input checked="" type="checkbox"/>	<input type="checkbox"/>	<input type="checkbox"/>
f) Conflict with the provisions of an adopted Habitat Conservation Plan, Natural Community Conservation Plan, or other approved local, regional, or state habitat conservation plan?	<input type="checkbox"/>	<input type="checkbox"/>	<input type="checkbox"/>	<input checked="" type="checkbox"/>

References: RCA Associates, Inc. 2024 (Appendix A)

Explanation of Checklist Answers

2a. Less than Significant Impact with Mitigations Incorporated

A biological reconnaissance was conducted in November 2007 that identified 100 Joshua trees at the site (City of Palmdale 2008). No sensitive biological resources other than Joshua trees as defined in 2008 by City of Palmdale Title 14 were noted. The 2008 IS/MND identified that 44 Joshua trees were suitable to

be transplanted and that City of Palmdale Title 14 required a minimum of 40 trees to be transplanted. The mitigation measure to reduce impacts to Joshua tree to a less than significant level was provided in the 2008 IS/MND as follows.

- #1 Implement the recommendations of the Native Desert Vegetation Preservation Plan prepared in accordance with Title 14 of the City of Palmdale Municipal Code

As identified in Section 2.2, since the 2008 IS/MND, Joshua tree have been listed as a Candidate species by the California Fish and Game Commission (2020). In 2023, the WJTCA was enacted that prohibits importation, export, take, possession, purchase, or sale of any western Joshua tree in California unless authorized by CDFW (California Code of Regulations 2023). From the WJTCA, "...The act authorizes CDFW to issue permits for the incidental take of one or more western Joshua trees if the permittee meets certain conditions. Permittees may pay specified fees in lieu of conducting mitigation activities. The act also authorizes CDFW to issue permits for the removal of dead western Joshua trees and the trimming of live western Joshua trees under certain circumstances. Pursuant to the WJTCA, CDFW may enter into an agreement with any county or city to delegate limited authority to permit the taking of a western Joshua tree associated with developing single-family residences, multifamily residences, accessory structures, and public works projects. CDFW may similarly enter into an agreement with any county or city to delegate limited authority to permit the removal of dead western Joshua trees and the trimming of live western Joshua trees." (California Department of Fish and Wildlife 2024).

The California Department of Fish and Wildlife has identified Joshua tree woodland habitat as a sensitive natural community (California Department of Fish and Wildlife 2023). In addition, Joshua Tree Woodland/*Yucca brevifolia* Woodland Alliance are defined by the California Native Plant Society as follows. Characteristic species of a Joshua Tree Woodland are the *Yucca brevifolia*, an emergent small tree over a shrub or grass layer with *Ambrosia dumosa*, *Ambrosia salsola*, *Artemisia tridentata*, *Chrysothamnus viscidiflorus*, *Coleogyne ramosissima*, *Cylindropuntia acanthocarpa*, *Ephedra nevadensis*, *Eriogonum fasciculatum*, *Gutierrezia microcephala*, *Krascheninnikovia lanata*, *Larrea tridentata*, *Lycium andersonii*, *Yucca baccata* and *Yucca schidigera*. Other trees may be present at low cover, including *Juniperus californica*, *Juniperus osteosperma* or *Pinus monophylla*. Trees are greater than 14 meter in size and the tree canopy is intermittent. Shrub layers associated with Joshua tree woodlands are open to intermittent and herbaceous layers are open to intermittent with perennial grasses and seasonal annuals. Joshua tree woodlands are found on gentle alluvial fans, ridges, and gentle to moderate slopes. Soil textures associated with Joshua tree woodlands are coarse sands, very fine silts, gravel or sandy loams. Soils associated with Joshua tree woodlands can have soil Associations with textures that are coarse sands and fine silts (California Native Plant Society 1995)

As a result of the recent listing of Joshua tree as Candidate species, a survey of the site was completed on October 9 and 10, 2023 to provide a census of Joshua trees for compliance with the Joshua Tree and Native Desert Preservation Ordinance 14.04 updated in 2023. The census report has identified a total of 514 Joshua trees on the site, including 251 Class A Western Joshua trees (less than 1 meter in height), 252 Class B trees (greater than 1 meter but less than 5 meters in height), and 11 Class C trees (greater than 5 meters in height) (RCA Associates, Inc. 2024). All of the Joshua trees present at the site will be required to be removed during the rough grading phase in order for the project to be completed. Prior to ground disturbance, an Incidental Take Permit in compliance with California Department of Fish and Game (CDFG) Code Section 2081 issued by the California Department of Fish and Wildlife will be required.

In addition, the 2008 IS/MND identified a requirement to conduct a preconstruction survey of the site 30-days in advance of ground disturbance to ensure no sensitive biological resources other than Joshua trees are present. To reduce impacts to sensitive biological resources to a less than significant level was provided in the 2008 IS/MND as follows.

- #2 No more than 30 days prior to any ground disturbing activity, a preconstruction survey shall be conducted by a qualified biologist to determine the presence of any Threatened, Rare or Sensitive species. If any such species or signs of species are detected on the site, avoidance or mitigation measures shall be implemented in accordance with CDFG guidelines

With incorporation of **Mitigation Measures BIO-1 and BIO-2**, a less than significant impact would occur.

Mitigation Measure BIO-1: Prior to disturbance of any Joshua trees, an Incidental Take Permit for take of Joshua trees shall have been received by the project applicant prior to ground disturbance or disturbance of any Joshua trees present at the site.

Mitigation Measure BIO-2: No more than 30 days prior to any ground disturbing activity, a preconstruction survey shall be conducted by a qualified biologist to determine the presence of any sensitive biological resources not identified in the 2023 Joshua tree census report. If any such species or signs of species are detected on the site, avoidance or mitigation measures shall be implemented in accordance with CDFW guidelines.

2b. Less than Significant Impact with Mitigation Incorporated

No riparian or riverine habitats were noted at the site in the 2008 IS/MND or during the 2023 Joshua tree census survey. No impact to riverine habitat would occur. Joshua tree woodland habitat is present at the site. As indicated earlier, Joshua trees have been listed as a Candidate species by the California Fish and Game Commission (2020). In addition, the California Department of Fish and Wildlife has identified Joshua tree woodland habitat as a sensitive natural community (California Department of Fish and Wildlife 2023). As indicated in Section 2.a, all of the Joshua trees present at the site will be required to be removed during the rough grading phase in order for the project to be completed. As a result, prior to ground disturbance, an Incidental Take Permit in compliance with California Department of Fish and Game (CDFG) Code Section 2081 issued by the California Department of Fish and Wildlife will be required.

With incorporation of **Mitigation Measures BIO-1**, a less than significant impact would occur.

2c. No Impact

No wetland habitat was noted at the site in the 2008 IS/MND or during the 2023 Joshua tree census survey. No impacts would occur, and the proposed project would not result in greater impacts than previously analyzed in the 2008 IS/MND.

2d. No Impact

The certified 2008 IS/MND did not identify any wildlife corridors or habitat linkages associated with the site. No impacts would occur, and the proposed project would not result in greater impacts than previously analyzed in the 2008 IS/MND.

2e. Less than Significant Impact with Mitigation Incorporated

As noted in Section 1a, the proposed project would be subject to mitigation measures identified in the 2008 IS/MND and the project applicant has completed a Joshua tree census report in compliance with the

Joshua Tree and Native Desert Preservation Ordinance 14.04. With implementation of **Mitigation Measures BIO-1**, a less than significant impact would occur.

2f. No Impact

There are no City of Palmdale adopted Habitat Conservation Plan, Natural Community Conservation Plan or other approved local, regional, or State habitat conservations plans in place that would apply to the project site. No impacts would occur, and the proposed project would not result in greater impacts than previously analyzed in the 2008 IS/MND.

SECTION 4.0 REFERENCES

California Code of Regulations

- 2023 Title 14 California Fish and Game Code, Division 2, Chapter 11.5, § 1927.2

California Department of Fish and Game

- 2024 Western Joshua Tree Conservation Act.
<https://wildlife.ca.gov/Conservation/Environmental-Review/WJT/WJTCA>. Accessed on May 7, 2024
- 2023 California Natural Community List. <https://www.wildlife.ca.gov/Data/VegCAMP/Natural-Communities>. Accessed April 26, 2024

California Game and Fish Commission

- 2020 California Fish and Game Commission Finding of Emergency and Statement of Proposed Emergency Regulatory Action Regarding Take of Western Joshua Tree

California Native Plant Society

- 1995 A Manual of California Vegetation Online. *Yucca brevifolia* Woodland Alliance. <https://vegetation.cnps.org/alliance/99>. Access on May 7, 2024

City of Palmdale

- 2008 Initial Study/Mitigated Negative Declaration for Tentative Tract Map 069651, A Request to Subdivide 19.84 Acres into 75 Single Family Residential Lots Including Two Detention Basin Lots Located Approximately 750 Feet East of 60th Street East on the South Side of Palmdale Boulevard
- 2020 Staff Report to Planning Commission, Tentative Tract Map 69651 Time Extension No. 2. July 9, 2020
- 2022 City of Palmdale 2045 General Plan Update Draft Environmental Impact Report SCH #2021060494, July 2022
- 2023a Envision Palmdale 2045 a Complete Community. City of Palmdale General Plan. Effective October 22, 2022, Amended on March 15, 2023 (GPA 23-001).
- 2023b Zoning Map. City of Palmdale. 6/29/23
- 2024 Palmdale Municipal Code. A Codification of the General Ordinances of the City of Palmdale, California. February 7, 2024

Mayer; K.E. and Laudenslayer Jr., W.F. (Eds.)

- 1988 Guide to Wildlife Habitats of California. Habitat Description-Joshua Trees. State of California, Resource Agency, Department of Fish and Game.

RCA Associates, Inc.

- 2024 Western Joshua Tree Census City of Palmdale, California Tract Map 69651 APN: 3024-008-018 & 3024-008-021, January 25, 2024

WESTERN JOSHUA TREE CENSUS

**CITY OF PALMDALE, CALIFORNIA
Tentative Tract Map 69651
APN: 3024-008-018 & 3024-008-021**

Prepared for:

Ms. Corinna Ocampo

**Pacific Community Builders
1000 Dove Street, Suite 300
Newport Beach, CA 92660**

Prepared by:

**RCA Associates, Inc.
15555 Main Street, #D4-235
Hesperia, CA 92345
(760) 596-0017**

Biologists:

**Ryan Hunter, Lead Environmental Scientist & Wildlife Biologist
Brian Bunyi, Environmental Scientist & Wildlife Biologist**



Project No: RCA#2021-30 JT

(Updated January 2024)

January 25, 2024

TITLE PAGE

Date Report Prepared: October 12, 2023

Date Report Updated: January 25, 2024

Field Work Completed: October 9 & 10, 2023

Report Title: Western Joshua Tree Census

Project Location: Palmdale, California
Tentative Tract Map 69651
APN: 3024-008-018 & 3024-008-021
NW Corner: 34.57966209°, -118.02065514°
NE Corner: 34.57964332°, -118.01841338°
SW Corner: 34.57613153°, -118.02062712°
SE Corner: 34.57609852°, -118.01838530°

Datum of Coordinates: World Geodetic System 1984 (WGS 84)

Prepared for: Corinna Ocampo
Pacific Community Builders
1000 Dove Street, Suite 300
Newport Beach, CA 92660

Principal Investigators: Ryan Hunter,
Lead Environmental Scientist & Wildlife Biologist
Brian Bunyi,
Environmental Scientist & Wildlife Biologist

Contact Information: Randall C. Arnold, Jr.
RCA Associates, Inc.
15555 Main Street, #D4-235
Hesperia, CA 92345
(760) 596-0017
rarnold@rcaassociatesllc.com
www.rcaassociatesllc.com

Ryan Hunter
RCA Associates, Inc.
15555 Main Street, #D4-235
Hesperia, CA 92345
(760) 596-0017
rhunter@rcaassociatesllc.com
www.rcaassociatesllc.com

Table of Contents

Section	Page
1.0 Summary	1
2.0 Introduction and Project Description	2
3.0 Methodologies	3
4.0 Results	4
5.0 Conclusions	53
6.0 References	54
7.0 Certification	55
Appendix A – Figures	
Appendix B – California Fish and Game Code 1927	

1.0 SUMMARY

At the request of the project proponent, RCA Associates, Inc. surveyed a 19.84-acre property located south of Palmdale Blvd. and east of 60th St. East in the City of Palmdale, California (APN: 3024-008-018 & 21) (Figures 1 and 2). The properties corners are marked in figure 3 and coordinates are displayed on the title page under location. The property site is located in Section 26, Township 6 North, Range 11 West (USGS Palmdale, CA 7.5-minute quadrangle).

The purpose of the survey was to evaluate the western Joshua trees present on the site to determine possible impacts to the population and to calculate approximate mitigation measures prior to site clearing activities. This report provides the results of the Western Joshua Tree Census performed on October 9 & 10, 2023. Following completion of the survey, RCA Associates, Inc. prepared this Western Joshua Tree Census to assist the project proponent with future planning regarding the possible relocation or removal of any Joshua trees and applying for an Incidental Take Permit (ITP). Information on the Joshua trees is provided in Section 4.0. The City of Palmdale Municipal Code has a chapter (Chapter 14.04) stating the purpose of the Western Joshua Tree Census, the importance of preserving the Joshua tree as important native desert vegetation, and the consequences of removing a tree without authorization. The requirements of the Ordinance (Chapter 14.04) and the City of Palmdale's Protected Plant Plan are provided in Appendix B.

Based on the results of the background data search it was determined that the project site is located within the reduced fee mitigation area for the Western Joshua Tree Conservation Act. Results of the field investigations yielded that there are 514 Joshua trees which occur within the boundaries of the property (Figures 1, 2 and 3). Based on the evaluation and analysis of each tree it was determined that 251 (48.83%) Joshua trees were less than 1 meter in height, 252 (49.03%) Joshua trees were 1 meter or greater but less than 5 meters in height, and 11 (2.14%) Joshua trees were 5 meters or greater in height. A summary of the mitigation fees is located in Table 4-1 and the GPS locations and information on each tree are provided in Table 4-2.

2.0 INTRODUCTION AND PROJECT LOCATION

The area surveyed is located on the southeast of Palmdale Blvd. and 60th St. East in the City of Palmdale, California. Vacant land borders the property boundary to the west and to the north across Palmdale Blvd. Existing housing developments border the site to the south and east. The biological resources on the site consist of a desert scrub community typical of the area which include Joshua tree (*Yucca brevifolia*), rubber rabbitbrush (*Ericameria nauseosa*), fiddleneck (*Amsinckia tessellata*), California juniper (*Juniperus californica*), white bursage (*Ambrosia dumosa*), California buckwheat (*Eriogonum fasciculatum*), and red brome (*Bromus rubens*).

Joshua trees occur throughout the Mojave Desert in Southern California and are typically found at an elevation of 400 to 1,800 meters (~1,200 to ~5,400 feet). Joshua trees within the western portion of the Mojave Desert typically receive more annual precipitation during “normal” years; consequently, cloning occurs more often resulting in numerous trunks sprouting from the same root system (Rowland, 1978). Joshua tree habitats provide habitat for a variety of wildlife species including desert woodrats (*Neotoma* sp.) and night lizards (*Xantusia* sp.) both of which utilize the base of the trees. A variety of birds also utilize Joshua trees for nesting such as hawks, common ravens, and cactus wrens. CDFW consider Joshua tree woodlands as areas that support relatively high species diversity and as such are considered to be a sensitive desert community. Joshua trees are also considered a significant resource under the California Environmental Quality Act (CEQA) and are included in the Desert Plant Protection Act, Food and Agricultural Code (80001 – 80006).

3.0 METHODOLOGIES

Pedestrian surveys were walked throughout the site and biologists from RCA Associates, Inc. evaluated each Joshua tree to determine the height, life stage, and a general health assessment. Each Joshua tree received a metal numbered tag which was affixed on the north side of each tree for orientation purposes if future transplanting is required by CDFW. A piece of flagging was affixed to each tree while taking pictures to indicate the tree of focus. The precise location and assessment of each tree was recorded using a Juniper Systems Cedar CT8X2 GPS tablet and a Nikon Forestry Pro II rangefinder was utilized to determine the extent of the property boundaries and accurate tree height. Those Joshua trees which occur on the property site are presented in Table 4-2 and the locations are provided in Figure 3. A 15-meter (~50 ft) is recommended as part of the census area surrounding the project site but was not surveyed due to landowner permission not being obtained. A KML with geographic data on the positions of the trees will be provided to help locate trees in projects with significant tree density and for future mapping.

4.0 RESULTS

There are 514 Joshua trees on the property and the GPS locations of the Joshua trees are provided in Table 4-2. A total of 514 Joshua trees occur within the boundaries of the property (Figures 1, 2 and 3). Based on the evaluation and analysis of each tree it was determined that 251 (48.83%) Joshua trees were less than 1 meter in height, 252 (49.03%) Joshua trees were 1 meter or greater but less than 5 meters in height, and 11 (2.14%) Joshua trees were 5 meters or greater in height. A summary of the mitigation fees is located in Table 4-1 and the GPS locations and information on each tree are provided in Table 4-2.

Table 4-1: Summary of mitigation fees based on “Western Joshua Tree Conservation Act Mitigation Fee Map
[\(https://experience.arcgis.com/experience/40690ac231124bccb07cbce42fc95ebd/\)](https://experience.arcgis.com/experience/40690ac231124bccb07cbce42fc95ebd/)

Reduced Mitigation Fees (within blue area) [See Section 1927.3 (d)]:		Number of trees per Size Class (A, B or C)	Approximate Cost per Size Class (A, B or C)
(A) Trees less than 1 meter in height - \$150		251	\$37,650
(B) Trees 1 meter or greater but less than 5 meters in height - \$200		252	\$50,400
(C) Trees 5 meters or greater in height - \$1,000		11	\$11,000
Total number of trees		514	
Approximate total mitigation cost			\$99,050
Standard Fees (anywhere in State, outside blue area) [See Section 1927.3 (e)]:			
(A) Trees less than 1 meter in height - \$340		N/A	N/A
(B) Trees 1 meter or greater but less than 5 meters in height - \$500		N/A	N/A
(C) Trees 5 meters or greater in height - \$2,500		N/A	N/A
Total number of trees		N/A	N/A
Approximate mitigation cost		N/A	N/A

Table 4-2: Western Joshua Tree Census. (Note: The GPS locations of the Joshua trees are provided below along with the height and a general health assessment.) (Note: The JT numbers correspond to the tag numbers placed on the Joshua trees.)

Total Number of Joshua Trees On Site	Number of Live Joshua Trees On Site	Number of Dead Joshua Trees	Number of Size Class “A” Joshua Trees	Number of Size Class “B” Joshua Trees	Number of Size Class “C” Joshua Trees
514	458	56	251	252	11

Joshua Tree	Latitude (WGS 84)	Longitude (WGS 84)	Live or Dead	Height of Tree (meters)	Size Class	Mature Tree (Branched)	Flowering or Fruiting Stage (flowers, fruits, or none)	Impact to Tree (removal, trim, relocation, other or none)	Will project activities be within 15 meters of tree	Relocation	Additional Notes
JT 1063	34.579592	-118.0196028	Live	3.1	B	Yes	None	Removal	Yes	Not Applicable	
JT 1064	34.57957733	-118.0194753	Live	3.9	B	Yes	None	Removal	Yes	Not Applicable	
JT 1067	34.5793505	-118.0194138	Live	3.3	B	Yes	None	Removal	Yes	Not Applicable	
JT 2658	34.57675133	-118.01943	Live	4.8	B	Yes	None	Removal	Yes	Not Applicable	
JT 2659	34.57680567	-118.0192197	Live	3.9	B	Yes	None	Removal	Yes	Not Applicable	
JT 2660	34.57680883	-118.0192122	Live	1.3	B	No	None	Removal	Yes	Not Applicable	

Joshua Tree	Latitude (WGS 84)	Longitude (WGS 84)	Live or Dead	Height of Tree (meters)	Size Class	Mature Tree (Branched)	Flowering or Fruiting Stage (flowers, fruits, or none)	Impact to Tree (removal, trim, relocation, other or none)	Will project activities be within 15 meters of tree	Relocation	Additional Notes
JT 2661	34.57682133	-118.0192297	Live	2.2	B	Yes	None	Removal	Yes	Not Applicable	
JT 2662	34.57681683	-118.0192395	Live	2.2	B	Yes	None	Removal	Yes	Not Applicable	
JT 2663	34.5769715	-118.0189888	Live	2.4	B	Yes	None	Removal	Yes	Not Applicable	
JT 2664	34.576974	-118.0189835	Live	0.2	A	No	None	Removal	Yes	Not Applicable	
JT 2665	34.576987	-118.018973	Live	0.2	A	No	None	Removal	Yes	Not Applicable	
JT 2666	34.5769805	-118.0189762	Live	0.2	A	No	None	Removal	Yes	Not Applicable	
JT 2667	34.57698017	-118.0189808	Live	0.2	A	No	None	Removal	Yes	Not Applicable	
JT 2668	34.57698533	-118.0189815	Live	0.2	A	No	None	Removal	Yes	Not Applicable	
JT 2669	34.57699167	-118.0189815	Live	0.2	A	No	None	Removal	Yes	Not Applicable	
JT 2670	34.57698167	-118.0189987	Live	0.2	A	No	None	Removal	Yes	Not Applicable	
JT 2671	34.576985	-118.0189878	Live	0.2	A	No	None	Removal	Yes	Not Applicable	

Joshua Tree	Latitude (WGS 84)	Longitude (WGS 84)	Live or Dead	Height of Tree (meters)	Size Class	Mature Tree (Branched)	Flowering or Fruiting Stage (flowers, fruits, or none)	Impact to Tree (removal, trim, relocation, other or none)	Will project activities be within 15 meters of tree	Relocation	Additional Notes
JT 2672	34.576973	-118.0189997	Live	0.2	A	No	None	Removal	Yes	Not Applicable	
JT 2673	34.576968	-118.0190062	Live	0.2	A	No	None	Removal	Yes	Not Applicable	
JT 2674	34.5769655	-118.0189867	Live	0.3	A	No	None	Removal	Yes	Not Applicable	
JT 2675	34.5769715	-118.0189823	Live	0.2	A	No	None	Removal	Yes	Not Applicable	
JT 2676	34.57701317	-118.018536	Live	4.5	B	Yes	None	Removal	Yes	Not Applicable	
JT 2677	34.57701617	-118.018541	Live	0.2	A	No	None	Removal	Yes	Not Applicable	
JT 2678	34.57715183	-118.018893	Live	3.9	B	Yes	None	Removal	Yes	Not Applicable	
JT 2679	34.57714083	-118.018902	Live	1	B	No	None	Removal	Yes	Not Applicable	
JT 2680	34.57714783	-118.018913	Live	0.3	A	No	None	Removal	Yes	Not Applicable	
JT 2681	34.577178	-118.0190953	Dead	4.1	B	Yes	None	Removal	Yes	Not Applicable	
JT 2682	34.57719767	-118.0192898	Live	4.1	B	Yes	None	Removal	Yes	Not Applicable	

Joshua Tree	Latitude (WGS 84)	Longitude (WGS 84)	Live or Dead	Height of Tree (meters)	Size Class	Mature Tree (Branched)	Flowering or Fruiting Stage (flowers, fruits, or none)	Impact to Tree (removal, trim, relocation, other or none)	Will project activities be within 15 meters of tree	Relocation	Additional Notes
JT 2683	34.577183	-118.0193223	Live	0.2	A	No	None	Removal	Yes	Not Applicable	
JT 2684	34.5771855	-118.0193323	Live	1.1	B	No	None	Removal	Yes	Not Applicable	
JT 2685	34.57718683	-118.0193313	Live	2.3	B	Yes	None	Removal	Yes	Not Applicable	
JT 2686	34.57718233	-118.019336	Live	0.2	A	No	None	Removal	Yes	Not Applicable	
JT 2687	34.5771845	-118.0193452	Live	0.2	A	No	None	Removal	Yes	Not Applicable	
JT 2688	34.57701467	-118.0193768	Live	3.9	B	Yes	None	Removal	Yes	Not Applicable	
JT 2689	34.57702	-118.019392	Live	0.3	A	No	None	Removal	Yes	Not Applicable	
JT 2690	34.57702333	-118.0194	Live	0.3	A	No	None	Removal	Yes	Not Applicable	
JT 2691	34.57701867	-118.0193938	Live	0.1	A	No	None	Removal	Yes	Not Applicable	
JT 2692	34.5770145	-118.0194053	Live	5.1	C	Yes	None	Removal	Yes	Not Applicable	
JT 2693	34.57697883	-118.0193747	Dead	3.1	B	Yes	None	Removal	Yes	Not Applicable	

Joshua Tree	Latitude (WGS 84)	Longitude (WGS 84)	Live or Dead	Height of Tree (meters)	Size Class	Mature Tree (Branched)	Flowering or Fruiting Stage (flowers, fruits, or none)	Impact to Tree (removal, trim, relocation, other or none)	Will project activities be within 15 meters of tree	Relocation	Additional Notes
JT 2694	34.57736367	-118.0194027	Dead	0.8	A	Yes	None	Removal	Yes	Not Applicable	
JT 2695	34.57745183	-118.0192872	Live	4.8	B	Yes	None	Removal	Yes	Not Applicable	
JT 2696	34.57746417	-118.0193093	Live	0.2	A	No	None	Removal	Yes	Not Applicable	
JT 2697	34.5774	-118.0191325	Live	5.6	C	Yes	None	Removal	Yes	Not Applicable	
JT 2698	34.5774585	-118.018552	Dead	2.8	B	Yes	None	Removal	Yes	Not Applicable	
JT 2699	34.57772233	-118.0186652	Dead	2.4	B	Yes	None	Removal	Yes	Not Applicable	
JT 2700	34.57773583	-118.0186707	Live	4	B	Yes	None	Removal	Yes	Not Applicable	
JT 2901	34.57772117	-118.0186758	Live	0.3	A	No	None	Removal	Yes	Not Applicable	
JT 2902	34.57772633	-118.0186978	Live	0.5	A	No	None	Removal	Yes	Not Applicable	
JT 2903	34.57780117	-118.018775	Live	2.1	B	Yes	None	Removal	Yes	Not Applicable	
JT 2904	34.57769917	-118.0188893	Live	1.9	B	No	None	Removal	Yes	Not Applicable	

Joshua Tree	Latitude (WGS 84)	Longitude (WGS 84)	Live or Dead	Height of Tree (meters)	Size Class	Mature Tree (Branched)	Flowering or Fruiting Stage (flowers, fruits, or none)	Impact to Tree (removal, trim, relocation, other or none)	Will project activities be within 15 meters of tree	Relocation	Additional Notes
JT 2905	34.57769533	-118.0188865	Live	3	B	Yes	None	Removal	Yes	Not Applicable	
JT 2906	34.577711	-118.0189215	Live	3.2	B	Yes	None	Removal	Yes	Not Applicable	
JT 2907	34.57772783	-118.018913	Live	0.7	A	No	None	Removal	Yes	Not Applicable	
JT 2908	34.57773067	-118.0189215	Live	0.9	A	No	None	Removal	Yes	Not Applicable	
JT 2909	34.57771617	-118.0189343	Live	0.3	A	No	None	Removal	Yes	Not Applicable	
JT 2910	34.57772317	-118.018946	Live	3.1	B	Yes	None	Removal	Yes	Not Applicable	
JT 2911	34.577717	-118.018942	Live	0.3	A	No	None	Removal	Yes	Not Applicable	
JT 2912	34.577725	-118.0189473	Live	2.2	B	No	None	Removal	Yes	Not Applicable	
JT 2913	34.57771383	-118.0189323	Live	2.4	B	No	None	Removal	Yes	Not Applicable	
JT 2914	34.57771817	-118.0189347	Live	4.9	B	Yes	None	Removal	Yes	Not Applicable	
JT 2915	34.57772733	-118.018937	Live	0.3	A	No	None	Removal	Yes	Not Applicable	

Joshua Tree	Latitude (WGS 84)	Longitude (WGS 84)	Live or Dead	Height of Tree (meters)	Size Class	Mature Tree (Branched)	Flowering or Fruiting Stage (flowers, fruits, or none)	Impact to Tree (removal, trim, relocation, other or none)	Will project activities be within 15 meters of tree	Relocation	Additional Notes
JT 2916	34.57772067	-118.0189155	Live	3.2	B	Yes	None	Removal	Yes	Not Applicable	
JT 2917	34.577491	-118.0194785	Live	2.3	B	Yes	None	Removal	Yes	Not Applicable	
JT 2918	34.577545	-118.0194662	Live	2	B	No	None	Removal	Yes	Not Applicable	
JT 2919	34.57753667	-118.01947	Live	1.3	B	No	None	Removal	Yes	Not Applicable	
JT 2920	34.57753417	-118.0194763	Live	3.9	B	Yes	None	Removal	Yes	Not Applicable	
JT 2921	34.57754017	-118.0194872	Live	2.2	B	No	None	Removal	Yes	Not Applicable	
JT 2922	34.57753583	-118.0194795	Live	0.3	A	No	None	Removal	Yes	Not Applicable	
JT 2923	34.57752967	-118.01948	Live	0.3	A	No	None	Removal	Yes	Not Applicable	
JT 2924	34.57790967	-118.01934	Dead	3	B	Yes	None	Removal	Yes	Not Applicable	
JT 2925	34.57791683	-118.0193475	Dead	3.3	B	Yes	None	Removal	Yes	Not Applicable	
JT 2926	34.57796183	-118.0188947	Live	4.8	B	Yes	None	Removal	Yes	Not Applicable	

Joshua Tree	Latitude (WGS 84)	Longitude (WGS 84)	Live or Dead	Height of Tree (meters)	Size Class	Mature Tree (Branched)	Flowering or Fruiting Stage (flowers, fruits, or none)	Impact to Tree (removal, trim, relocation, other or none)	Will project activities be within 15 meters of tree	Relocation	Additional Notes
JT 2927	34.57794967	-118.0188888	Live	0.3	A	No	None	Removal	Yes	Not Applicable	
JT 2928	34.57794833	-118.0188748	Live	0.4	A	No	None	Removal	Yes	Not Applicable	
JT 2929	34.577932	-118.0188678	Live	0.9	A	No	None	Removal	Yes	Not Applicable	
JT 2930	34.57793467	-118.0188792	Live	0.9	A	No	None	Removal	Yes	Not Applicable	
JT 2931	34.57794867	-118.0186593	Live	3.9	B	Yes	None	Removal	Yes	Not Applicable	
JT 2932	34.57794967	-118.0186613	Live	0.2	A	No	None	Removal	Yes	Not Applicable	
JT 2933	34.57794033	-118.018676	Live	0.2	A	No	None	Removal	Yes	Not Applicable	
JT 2934	34.57833767	-118.0186158	Live	3	B	Yes	None	Removal	Yes	Not Applicable	
JT 2935	34.578479	-118.0185437	Dead	1.3	B	Yes	None	Removal	Yes	Not Applicable	
JT 2936	34.57827033	-118.0192088	Live	3.8	B	Yes	None	Removal	Yes	Not Applicable	
JT 2937	34.5782585	-118.0192302	Live	0.3	A	No	None	Removal	Yes	Not Applicable	

Joshua Tree	Latitude (WGS 84)	Longitude (WGS 84)	Live or Dead	Height of Tree (meters)	Size Class	Mature Tree (Branched)	Flowering or Fruiting Stage (flowers, fruits, or none)	Impact to Tree (removal, trim, relocation, other or none)	Will project activities be within 15 meters of tree	Relocation	Additional Notes
JT 2938	34.578262	-118.0192368	Live	0.4	A	No	None	Removal	Yes	Not Applicable	
JT 2939	34.57825867	-118.0192495	Live	0.2	A	No	None	Removal	Yes	Not Applicable	
JT 2941	34.57834183	-118.0192645	Live	2.7	B	Yes	None	Removal	Yes	Not Applicable	
JT 2942	34.57836883	-118.0192895	Live	3	B	Yes	None	Removal	Yes	Not Applicable	
JT 2943	34.578114	-118.0194738	Live	4.1	B	Yes	None	Removal	Yes	Not Applicable	
JT 2944	34.57816617	-118.0195808	Live	3.2	B	Yes	None	Removal	Yes	Not Applicable	
JT 2945	34.578159	-118.0195795	Live	2	B	Yes	None	Removal	Yes	Not Applicable	
JT 2946	34.57823167	-118.0195548	Live	3.3	B	Yes	None	Removal	Yes	Not Applicable	
JT 2947	34.57824033	-118.0196423	Live	4.7	B	Yes	None	Removal	Yes	Not Applicable	
JT 2948	34.57824483	-118.0196333	Live	0.3	A	No	None	Removal	Yes	Not Applicable	
JT 2949	34.57824	-118.0196365	Live	0.2	A	No	None	Removal	Yes	Not Applicable	

Joshua Tree	Latitude (WGS 84)	Longitude (WGS 84)	Live or Dead	Height of Tree (meters)	Size Class	Mature Tree (Branched)	Flowering or Fruiting Stage (flowers, fruits, or none)	Impact to Tree (removal, trim, relocation, other or none)	Will project activities be within 15 meters of tree	Relocation	Additional Notes
JT 2950	34.578244	-118.0196302	Live	0.3	A	No	None	Removal	Yes	Not Applicable	
JT 2951	34.57823633	-118.0196325	Live	0.3	A	No	None	Removal	Yes	Not Applicable	
JT 2952	34.57849117	-118.0193888	Live	2.8	B	Yes	None	Removal	Yes	Not Applicable	
JT 2953	34.57851917	-118.0193795	Live	3.4	B	Yes	None	Removal	Yes	Not Applicable	
JT 2954	34.57851867	-118.019387	Live	5.5	C	Yes	None	Removal	Yes	Not Applicable	
JT 2955	34.57853	-118.0193933	Live	2.8	B	No	None	Removal	Yes	Not Applicable	
JT 2956	34.57854033	-118.0193847	Live	4.7	B	Yes	None	Removal	Yes	Not Applicable	
JT 2957	34.5785335	-118.0193837	Live	1.7	B	No	None	Removal	Yes	Not Applicable	
JT 2958	34.57854233	-118.0193878	Live	0.9	A	No	None	Removal	Yes	Not Applicable	
JT 2959	34.5785065	-118.0193948	Live	0.2	A	No	None	Removal	Yes	Not Applicable	
JT 2960	34.57851267	-118.0193918	Live	0.3	A	No	None	Removal	Yes	Not Applicable	

Joshua Tree	Latitude (WGS 84)	Longitude (WGS 84)	Live or Dead	Height of Tree (meters)	Size Class	Mature Tree (Branched)	Flowering or Fruiting Stage (flowers, fruits, or none)	Impact to Tree (removal, trim, relocation, other or none)	Will project activities be within 15 meters of tree	Relocation	Additional Notes
JT 2961	34.57851217	-118.0193972	Live	0.3	A	No	None	Removal	Yes	Not Applicable	
JT 2962	34.57852033	-118.0193917	Live	0.4	A	No	None	Removal	Yes	Not Applicable	
JT 2963	34.57851983	-118.0193893	Live	0.3	A	No	None	Removal	Yes	Not Applicable	
JT 2964	34.57853117	-118.0194045	Live	0.2	A	No	None	Removal	Yes	Not Applicable	
JT 2965	34.57854717	-118.019381	Live	0.3	A	No	None	Removal	Yes	Not Applicable	
JT 2966	34.57855967	-118.0193813	Live	0.3	A	No	None	Removal	Yes	Not Applicable	
JT 2967	34.57855783	-118.019383	Live	0.7	A	No	None	Removal	Yes	Not Applicable	
JT 2968	34.57854483	-118.0193713	Live	0.8	A	No	None	Removal	Yes	Not Applicable	
JT 2969	34.57853467	-118.0193733	Live	0.2	A	No	None	Removal	Yes	Not Applicable	
JT 2970	34.57850917	-118.0193552	Live	0.3	A	No	None	Removal	Yes	Not Applicable	
JT 2971	34.5785145	-118.019364	Live	0.6	A	No	None	Removal	Yes	Not Applicable	

Joshua Tree	Latitude (WGS 84)	Longitude (WGS 84)	Live or Dead	Height of Tree (meters)	Size Class	Mature Tree (Branched)	Flowering or Fruiting Stage (flowers, fruits, or none)	Impact to Tree (removal, trim, relocation, other or none)	Will project activities be within 15 meters of tree	Relocation	Additional Notes
JT 2972	34.57869633	-118.019401	Live	4.1	B	Yes	None	Removal	Yes	Not Applicable	
JT 2973	34.57882167	-118.0193378	Live	4.1	B	Yes	None	Removal	Yes	Not Applicable	
JT 2974	34.578825	-118.0193377	Live	0.3	A	No	None	Removal	Yes	Not Applicable	
JT 2975	34.57882083	-118.0193403	Live	0.7	A	No	None	Removal	Yes	Not Applicable	
JT 2976	34.57881767	-118.0193362	Live	0.4	A	No	None	Removal	Yes	Not Applicable	
JT 2977	34.57906233	-118.0189957	Live	1.2	B	No	None	Removal	Yes	Not Applicable	
JT 2978	34.57889483	-118.0186838	Live	4.7	B	Yes	None	Removal	Yes	Not Applicable	
JT 2979	34.579068	-118.0186132	Live	4.9	B	Yes	None	Removal	Yes	Not Applicable	
JT 2980	34.57906133	-118.0186247	Live	1.9	B	No	None	Removal	Yes	Not Applicable	
JT 2981	34.5790535	-118.0186208	Live	1.2	B	No	None	Removal	Yes	Not Applicable	
JT 2982	34.57904983	-118.0186193	Live	0.3	A	No	None	Removal	Yes	Not Applicable	

Joshua Tree	Latitude (WGS 84)	Longitude (WGS 84)	Live or Dead	Height of Tree (meters)	Size Class	Mature Tree (Branched)	Flowering or Fruiting Stage (flowers, fruits, or none)	Impact to Tree (removal, trim, relocation, other or none)	Will project activities be within 15 meters of tree	Relocation	Additional Notes
JT 2983	34.57904867	-118.018619	Live	0.2	A	No	None	Removal	Yes	Not Applicable	
JT 2984	34.579051	-118.0186135	Live	2	B	No	None	Removal	Yes	Not Applicable	
JT 2985	34.579061	-118.0186008	Live	0.3	A	No	None	Removal	Yes	Not Applicable	
JT 2986	34.57905317	-118.0186123	Live	0.3	A	No	None	Removal	Yes	Not Applicable	
JT 2987	34.57906333	-118.0186085	Live	0.2	A	No	None	Removal	Yes	Not Applicable	
JT 2988	34.57926567	-118.0185708	Live	4	B	Yes	None	Removal	Yes	Not Applicable	
JT 2989	34.5792905	-118.0185907	Live	0.3	A	No	None	Removal	Yes	Not Applicable	
JT 2990	34.5792965	-118.018606	Live	0.3	A	No	None	Removal	Yes	Not Applicable	
JT 2991	34.57922933	-118.0187957	Live	3.9	B	Yes	None	Removal	Yes	Not Applicable	
JT 2992	34.5794245	-118.0191613	Live	2	B	Yes	None	Removal	Yes	Not Applicable	
JT 2993	34.579523	-118.0192688	Live	3.5	B	Yes	None	Removal	Yes	Not Applicable	

Joshua Tree	Latitude (WGS 84)	Longitude (WGS 84)	Live or Dead	Height of Tree (meters)	Size Class	Mature Tree (Branched)	Flowering or Fruiting Stage (flowers, fruits, or none)	Impact to Tree (removal, trim, relocation, other or none)	Will project activities be within 15 meters of tree	Relocation	Additional Notes
JT 2994	34.57953283	-118.019271	Live	1.1	B	No	None	Removal	Yes	Not Applicable	
JT 2995	34.57951617	-118.0192737	Live	1.3	B	No	None	Removal	Yes	Not Applicable	
JT 2996	34.57952383	-118.019254	Live	0.9	A	No	None	Removal	Yes	Not Applicable	
JT 2997	34.57957917	-118.0196023	Live	0.2	A	No	None	Removal	Yes	Not Applicable	
JT 2998	34.57956567	-118.0195932	Live	0.3	A	No	None	Removal	Yes	Not Applicable	
JT 2999	34.57957433	-118.0195942	Live	0.3	A	No	None	Removal	Yes	Not Applicable	
JT 3000	34.57958467	-118.0195905	Live	0.5	A	No	None	Removal	Yes	Not Applicable	
JT 320	34.57630367	-118.0205278	Dead	1.5	B	Yes	None	Removal	Yes	Not Applicable	
JT 321	34.57622483	-118.0204455	Live	3.4	B	Yes	None	Removal	Yes	Not Applicable	
JT 322	34.576187	-118.0203742	Live	2.1	B	No	None	Removal	Yes	Not Applicable	
JT 323	34.57619817	-118.0203738	Live	3.3	B	Yes	None	Removal	Yes	Not Applicable	

Joshua Tree	Latitude (WGS 84)	Longitude (WGS 84)	Live or Dead	Height of Tree (meters)	Size Class	Mature Tree (Branched)	Flowering or Fruiting Stage (flowers, fruits, or none)	Impact to Tree (removal, trim, relocation, other or none)	Will project activities be within 15 meters of tree	Relocation	Additional Notes
JT 324	34.57619733	-118.0203707	Live	1.2	B	No	None	Removal	Yes	Not Applicable	
JT 325	34.57618367	-118.0203543	Live	0.2	A	No	None	Removal	Yes	Not Applicable	
JT 326	34.57620017	-118.0203628	Live	0.2	A	No	None	Removal	Yes	Not Applicable	
JT 327	34.57618067	-118.0203745	Live	0.2	A	No	None	Removal	Yes	Not Applicable	
JT 328	34.57638483	-118.0203242	Live	2.7	B	Yes	None	Removal	Yes	Not Applicable	
JT 329	34.57638567	-118.020325	Dead	3.2	B	Yes	None	Removal	Yes	Not Applicable	
JT 330	34.576363	-118.0200797	Live	4.3	B	Yes	None	Removal	Yes	Not Applicable	
JT 331	34.57636533	-118.020085	Live	2.1	B	No	None	Removal	Yes	Not Applicable	
JT 332	34.57638	-118.0200895	Live	4	B	Yes	None	Removal	Yes	Not Applicable	
JT 333	34.57636183	-118.020066	Live	0.2	A	No	None	Removal	Yes	Not Applicable	
JT 334	34.576367	-118.0200797	Live	0.1	A	No	None	Removal	Yes	Not Applicable	

Joshua Tree	Latitude (WGS 84)	Longitude (WGS 84)	Live or Dead	Height of Tree (meters)	Size Class	Mature Tree (Branched)	Flowering or Fruiting Stage (flowers, fruits, or none)	Impact to Tree (removal, trim, relocation, other or none)	Will project activities be within 15 meters of tree	Relocation	Additional Notes
JT 335	34.5763585	-118.0200712	Live	0.2	A	No	None	Removal	Yes	Not Applicable	
JT 336	34.57631433	-118.0199378	Live	4	B	Yes	None	Removal	Yes	Not Applicable	
JT 337	34.57630533	-118.019928	Live	3.5	B	Yes	None	Removal	Yes	Not Applicable	
JT 338	34.57629583	-118.0199218	Live	0.2	A	No	None	Removal	Yes	Not Applicable	
JT 339	34.57629467	-118.0199122	Live	0.6	A	No	None	Removal	Yes	Not Applicable	
JT 340	34.576304	-118.0198808	Dead	1.5	B	Yes	None	Removal	Yes	Not Applicable	
JT 341	34.57633683	-118.0197673	Live	3.4	B	Yes	None	Removal	Yes	Not Applicable	
JT 342	34.57632483	-118.0197652	Live	0.2	A	No	None	Removal	Yes	Not Applicable	
JT 343	34.576325	-118.0196567	Live	3	B	Yes	None	Removal	Yes	Not Applicable	
JT 344	34.576334	-118.0196545	Live	0.2	A	No	None	Removal	Yes	Not Applicable	
JT 345	34.5762975	-118.019576	Live	3.3	B	Yes	None	Removal	Yes	Not Applicable	

Joshua Tree	Latitude (WGS 84)	Longitude (WGS 84)	Live or Dead	Height of Tree (meters)	Size Class	Mature Tree (Branched)	Flowering or Fruiting Stage (flowers, fruits, or none)	Impact to Tree (removal, trim, relocation, other or none)	Will project activities be within 15 meters of tree	Relocation	Additional Notes
JT 346	34.57630117	-118.0195492	Live	4.7	B	Yes	None	Removal	Yes	Not Applicable	
JT 347	34.57632867	-118.0191848	Live	3	B	Yes	None	Removal	Yes	Not Applicable	
JT 348	34.57638583	-118.0191087	Live	2.2	B	Yes	None	Removal	Yes	Not Applicable	
JT 349	34.5764015	-118.0191113	Live	3.1	B	Yes	None	Removal	Yes	Not Applicable	
JT 350	34.576404	-118.0191267	Live	1	B	No	None	Removal	Yes	Not Applicable	
JT 351	34.57640117	-118.0191353	Live	3.1	B	Yes	None	Removal	Yes	Not Applicable	
JT 352	34.57631033	-118.0186807	Dead	2.1	B	Yes	None	Removal	Yes	Not Applicable	
JT 353	34.57636433	-118.0185603	Live	0.8	A	No	None	Removal	Yes	Not Applicable	
JT 354	34.57636883	-118.0185668	Live	3.2	B	Yes	None	Removal	Yes	Not Applicable	
JT 355	34.5763715	-118.0185682	Live	3	B	Yes	None	Removal	Yes	Not Applicable	
JT 356	34.57637083	-118.0185758	Live	1.1	B	No	None	Removal	Yes	Not Applicable	

Joshua Tree	Latitude (WGS 84)	Longitude (WGS 84)	Live or Dead	Height of Tree (meters)	Size Class	Mature Tree (Branched)	Flowering or Fruiting Stage (flowers, fruits, or none)	Impact to Tree (removal, trim, relocation, other or none)	Will project activities be within 15 meters of tree	Relocation	Additional Notes
JT 357	34.57638517	-118.0185768	Live	2.1	B	Yes	None	Removal	Yes	Not Applicable	
JT 358	34.576378	-118.0185783	Live	0.6	A	No	None	Removal	Yes	Not Applicable	
JT 359	34.5763795	-118.0185877	Live	2.8	B	Yes	None	Removal	Yes	Not Applicable	
JT 360	34.576364	-118.0186	Live	4.2	B	Yes	None	Removal	Yes	Not Applicable	
JT 361	34.576361	-118.0185882	Live	0.3	A	No	None	Removal	Yes	Not Applicable	
JT 362	34.576355	-118.0185418	Live	0.1	A	No	None	Removal	Yes	Not Applicable	
JT 363	34.57635017	-118.0185445	Live	0.1	A	No	None	Removal	Yes	Not Applicable	
JT 364	34.5763445	-118.0185723	Live	0.1	A	No	None	Removal	Yes	Not Applicable	
JT 365	34.576335	-118.0185635	Live	2.8	B	No	None	Removal	Yes	Not Applicable	
JT 366	34.576344	-118.0185708	Live	1.9	B	Yes	None	Removal	Yes	Not Applicable	
JT 367	34.57635117	-118.018567	Live	0.6	A	No	None	Removal	Yes	Not Applicable	

Joshua Tree	Latitude (WGS 84)	Longitude (WGS 84)	Live or Dead	Height of Tree (meters)	Size Class	Mature Tree (Branched)	Flowering or Fruiting Stage (flowers, fruits, or none)	Impact to Tree (removal, trim, relocation, other or none)	Will project activities be within 15 meters of tree	Relocation	Additional Notes
JT 368	34.57634517	-118.0185802	Live	3.8	B	Yes	None	Removal	Yes	Not Applicable	
JT 369	34.576342	-118.0185787	Dead	2.8	B	Yes	None	Removal	Yes	Not Applicable	
JT 370	34.57662483	-118.0185487	Live	0.2	A	No	None	Removal	Yes	Not Applicable	
JT 371	34.57663967	-118.0185553	Live	1.6	B	Yes	None	Removal	Yes	Not Applicable	
JT 372	34.576639	-118.0185533	Dead	1.3	B	Yes	None	Removal	Yes	Not Applicable	
JT 373	34.57661833	-118.0185553	Live	3	B	Yes	None	Removal	Yes	Not Applicable	
JT 374	34.576618	-118.0185643	Live	4	B	Yes	None	Removal	Yes	Not Applicable	
JT 375	34.57670883	-118.0186908	Live	0.1	A	No	None	Removal	Yes	Not Applicable	
JT 376	34.576711	-118.0186943	Live	0.1	A	No	None	Removal	Yes	Not Applicable	
JT 377	34.57670617	-118.0186797	Live	3.1	B	Yes	None	Removal	Yes	Not Applicable	
JT 378	34.57670817	-118.0187037	Live	3.1	B	Yes	None	Removal	Yes	Not Applicable	

Joshua Tree	Latitude (WGS 84)	Longitude (WGS 84)	Live or Dead	Height of Tree (meters)	Size Class	Mature Tree (Branched)	Flowering or Fruiting Stage (flowers, fruits, or none)	Impact to Tree (removal, trim, relocation, other or none)	Will project activities be within 15 meters of tree	Relocation	Additional Notes
JT 379	34.57669883	-118.0187017	Live	0.1	A	No	None	Removal	Yes	Not Applicable	
JT 380	34.57650683	-118.0188747	Dead	4.2	B	Yes	None	Removal	Yes	Not Applicable	
JT 381	34.57663117	-118.0189447	Live	2.5	B	Yes	None	Removal	Yes	Not Applicable	
JT 382	34.57670017	-118.0189583	Live	4.9	B	Yes	None	Removal	Yes	Not Applicable	
JT 383	34.5766235	-118.0193073	Live	3	B	No	None	Removal	Yes	Not Applicable	
JT 384	34.57665317	-118.0194068	Live	2.8	B	Yes	None	Removal	Yes	Not Applicable	
JT 385	34.57651167	-118.019419	Dead	3	B	Yes	None	Removal	Yes	Not Applicable	
JT 386	34.57649	-118.0195963	Live	3.2	B	Yes	None	Removal	Yes	Not Applicable	
JT 387	34.576503	-118.0196238	Dead	2.2	B	Yes	None	Removal	Yes	Not Applicable	
JT 388	34.57659465	-118.0199976	Live	3.2	B	Yes	None	Removal	Yes	Not Applicable	
JT 389	34.57658885	-118.0199962	Live	0.2	A	No	None	Removal	Yes	Not Applicable	

Joshua Tree	Latitude (WGS 84)	Longitude (WGS 84)	Live or Dead	Height of Tree (meters)	Size Class	Mature Tree (Branched)	Flowering or Fruiting Stage (flowers, fruits, or none)	Impact to Tree (removal, trim, relocation, other or none)	Will project activities be within 15 meters of tree	Relocation	Additional Notes
JT 390	34.57659686	-118.0199966	Live	0.1	A	No	None	Removal	Yes	Not Applicable	
JT 391	34.57659603	-118.0199979	Live	0.1	A	No	None	Removal	Yes	Not Applicable	
JT 392	34.57659576	-118.0200009	Live	0.2	A	No	None	Removal	Yes	Not Applicable	
JT 393	34.57659244	-118.0200066	Live	0.1	A	No	None	Removal	Yes	Not Applicable	
JT 394	34.57661839	-118.0200529	Live	3	B	Yes	None	Removal	Yes	Not Applicable	
JT 395	34.57663833	-118.0200347	Live	0.2	A	No	None	Removal	Yes	Not Applicable	
JT 396	34.57663033	-118.0200397	Live	0.2	A	No	None	Removal	Yes	Not Applicable	
JT 397	34.57663733	-118.0200345	Live	0.1	A	No	None	Removal	Yes	Not Applicable	
JT 398	34.57647133	-118.0195245	Live	2	B	No	None	Removal	Yes	Not Applicable	
JT 399	34.57646167	-118.019518	Dead	2.4	B	Yes	None	Removal	Yes	Not Applicable	
JT 400	34.57644433	-118.0195232	Live	2.1	B	Yes	None	Removal	Yes	Not Applicable	

Joshua Tree	Latitude (WGS 84)	Longitude (WGS 84)	Live or Dead	Height of Tree (meters)	Size Class	Mature Tree (Branched)	Flowering or Fruiting Stage (flowers, fruits, or none)	Impact to Tree (removal, trim, relocation, other or none)	Will project activities be within 15 meters of tree	Relocation	Additional Notes
JT 401	34.576686	-118.0201207	Live	1.3	B	No	None	Removal	Yes	Not Applicable	
JT 402	34.57668133	-118.0201327	Live	5.2	C	Yes	None	Removal	Yes	Not Applicable	
JT 403	34.5766825	-118.02013	Live	0.2	A	No	None	Removal	Yes	Not Applicable	
JT 404	34.57668483	-118.0201335	Live	2.3	B	No	None	Removal	Yes	Not Applicable	
JT 405	34.576692	-118.0201578	Live	2	B	No	None	Removal	Yes	Not Applicable	
JT 406	34.576693	-118.0201662	Live	2.1	B	No	None	Removal	Yes	Not Applicable	
JT 407	34.57654867	-118.020209	Live	2.2	B	Yes	None	Removal	Yes	Not Applicable	
JT 408	34.57656733	-118.0202037	Live	2.4	B	Yes	None	Removal	Yes	Not Applicable	
JT 409	34.57654233	-118.0202373	Live	2	B	No	None	Removal	Yes	Not Applicable	
JT 410	34.5765415	-118.020433	Live	5.2	C	Yes	None	Removal	Yes	Not Applicable	
JT 411	34.57649067	-118.0206013	Live	3.8	B	Yes	None	Removal	Yes	Not Applicable	

Joshua Tree	Latitude (WGS 84)	Longitude (WGS 84)	Live or Dead	Height of Tree (meters)	Size Class	Mature Tree (Branched)	Flowering or Fruiting Stage (flowers, fruits, or none)	Impact to Tree (removal, trim, relocation, other or none)	Will project activities be within 15 meters of tree	Relocation	Additional Notes
JT 412	34.576472	-118.020606	Dead	1.1	B	Yes	None	Removal	Yes	Not Applicable	
JT 413	34.5766095	-118.0205032	Live	4.1	B	Yes	None	Removal	Yes	Not Applicable	
JT 414	34.57663133	-118.0205127	Live	4	B	Yes	None	Removal	Yes	Not Applicable	
JT 415	34.576633	-118.0205112	Live	2.1	B	No	None	Removal	Yes	Not Applicable	
JT 416	34.57662617	-118.0205143	Live	0.2	A	No	None	Removal	Yes	Not Applicable	
JT 417	34.576625	-118.0205295	Live	2.2	B	Yes	None	Removal	Yes	Not Applicable	
JT 418	34.57661733	-118.0205395	Live	2.4	B	Yes	None	Removal	Yes	Not Applicable	
JT 419	34.57661283	-118.0205115	Dead	1.9	B	No	None	Removal	Yes	Not Applicable	
JT 420	34.57662033	-118.0205047	Live	0.8	A	No	None	Removal	Yes	Not Applicable	
JT 421	34.5766445	-118.0204843	Dead	2.2	B	Yes	None	Removal	Yes	Not Applicable	
JT 422	34.57664517	-118.0204875	Dead	3.2	B	Yes	None	Removal	Yes	Not Applicable	

Joshua Tree	Latitude (WGS 84)	Longitude (WGS 84)	Live or Dead	Height of Tree (meters)	Size Class	Mature Tree (Branched)	Flowering or Fruiting Stage (flowers, fruits, or none)	Impact to Tree (removal, trim, relocation, other or none)	Will project activities be within 15 meters of tree	Relocation	Additional Notes
JT 423	34.57677283	-118.0201753	Live	1.3	B	No	None	Removal	Yes	Not Applicable	
JT 424	34.57676883	-118.0201812	Live	1.5	B	No	None	Removal	Yes	Not Applicable	
JT 425	34.57676967	-118.0201812	Live	0.8	A	No	None	Removal	Yes	Not Applicable	
JT 426	34.57676283	-118.0201923	Live	3.5	B	Yes	None	Removal	Yes	Not Applicable	
JT 427	34.57676333	-118.0202035	Live	1.8	B	No	None	Removal	Yes	Not Applicable	
JT 428	34.57675533	-118.0202018	Live	0.2	A	No	None	Removal	Yes	Not Applicable	
JT 429	34.5767495	-118.0201888	Live	0.2	A	No	None	Removal	Yes	Not Applicable	
JT 430	34.5768735	-118.0202367	Live	2.1	B	Yes	None	Removal	Yes	Not Applicable	
JT 431	34.57686683	-118.0202267	Live	2	B	No	None	Removal	Yes	Not Applicable	
JT 432	34.5768765	-118.0202448	Live	1.9	B	No	None	Removal	Yes	Not Applicable	
JT 433	34.57687	-118.020247	Live	2.6	B	Yes	None	Removal	Yes	Not Applicable	

Joshua Tree	Latitude (WGS 84)	Longitude (WGS 84)	Live or Dead	Height of Tree (meters)	Size Class	Mature Tree (Branched)	Flowering or Fruiting Stage (flowers, fruits, or none)	Impact to Tree (removal, trim, relocation, other or none)	Will project activities be within 15 meters of tree	Relocation	Additional Notes
JT 434	34.5768715	-118.0202503	Live	2	B	No	None	Removal	Yes	Not Applicable	
JT 435	34.576862	-118.0202512	Live	0.3	A	No	None	Removal	Yes	Not Applicable	
JT 436	34.57687383	-118.0202548	Live	2.4	B	Yes	None	Removal	Yes	Not Applicable	
JT 437	34.57687233	-118.0202718	Live	2.1	B	No	None	Removal	Yes	Not Applicable	
JT 438	34.576871	-118.0202647	Live	2	B	No	None	Removal	Yes	Not Applicable	
JT 439	34.57688917	-118.0202467	Live	0.2	A	No	None	Removal	Yes	Not Applicable	
JT 440	34.57689433	-118.0202455	Live	2.3	B	Yes	None	Removal	Yes	Not Applicable	
JT 441	34.57689267	-118.02026	Live	4	B	Yes	None	Removal	Yes	Not Applicable	
JT 442	34.576895	-118.0202612	Live	0.2	A	No	None	Removal	Yes	Not Applicable	
JT 443	34.57689217	-118.0202623	Live	0.7	A	Yes	None	Removal	Yes	Not Applicable	
JT 444	34.57689183	-118.020265	Live	0.7	A	No	None	Removal	Yes	Not Applicable	

Joshua Tree	Latitude (WGS 84)	Longitude (WGS 84)	Live or Dead	Height of Tree (meters)	Size Class	Mature Tree (Branched)	Flowering or Fruiting Stage (flowers, fruits, or none)	Impact to Tree (removal, trim, relocation, other or none)	Will project activities be within 15 meters of tree	Relocation	Additional Notes
JT 445	34.57688667	-118.0202613	Live	0.1	A	No	None	Removal	Yes	Not Applicable	
JT 446	34.57688967	-118.0202703	Live	0.2	A	No	None	Removal	Yes	Not Applicable	
JT 447	34.57689433	-118.0202765	Live	0.2	A	No	None	Removal	Yes	Not Applicable	
JT 448	34.57687133	-118.0202565	Live	0.2	A	No	None	Removal	Yes	Not Applicable	
JT 449	34.57687317	-118.0202652	Live	0.2	A	No	None	Removal	Yes	Not Applicable	
JT 450	34.57687083	-118.0202362	Dead	0.8	B	No	None	Removal	Yes	Not Applicable	
JT 451	34.57690533	-118.0200123	Live	3.3	B	Yes	None	Removal	Yes	Not Applicable	
JT 452	34.57678217	-118.0199062	Dead	3.5	B	Yes	None	Removal	Yes	Not Applicable	
JT 453	34.576786	-118.0199128	Live	3.6	B	Yes	None	Removal	Yes	Not Applicable	
JT 454	34.57677383	-118.0199192	Live	0.3	A	No	None	Removal	Yes	Not Applicable	
JT 455	34.57677	-118.0199248	Live	0.3	A	No	None	Removal	Yes	Not Applicable	

Joshua Tree	Latitude (WGS 84)	Longitude (WGS 84)	Live or Dead	Height of Tree (meters)	Size Class	Mature Tree (Branched)	Flowering or Fruiting Stage (flowers, fruits, or none)	Impact to Tree (removal, trim, relocation, other or none)	Will project activities be within 15 meters of tree	Relocation	Additional Notes
JT 456	34.5768695	-118.0197632	Live	3.4	B	Yes	None	Removal	Yes	Not Applicable	
JT 457	34.57686033	-118.0196282	Live	2.9	B	Yes	None	Removal	Yes	Not Applicable	
JT 458	34.57703333	-118.0194903	Live	2.6	B	Yes	None	Removal	Yes	Not Applicable	
JT 459	34.577029	-118.0195042	Live	5.3	C	Yes	None	Removal	Yes	Not Applicable	
JT 460	34.5770125	-118.019502	Live	3.8	B	Yes	None	Removal	Yes	Not Applicable	
JT 461	34.57712167	-118.0194968	Live	0.9	A	Yes	None	Removal	Yes	Not Applicable	
JT 462	34.57712733	-118.019509	Live	0.2	A	No	None	Removal	Yes	Not Applicable	
JT 463	34.57713083	-118.0195065	Live	0.8	A	No	None	Removal	Yes	Not Applicable	
JT 464	34.57713067	-118.0195178	Live	0.8	A	No	None	Removal	Yes	Not Applicable	
JT 465	34.57703117	-118.0201385	Live	1.5	B	No	None	Removal	Yes	Not Applicable	
JT 466	34.57704033	-118.0201417	Live	0.8	A	No	None	Removal	Yes	Not Applicable	

Joshua Tree	Latitude (WGS 84)	Longitude (WGS 84)	Live or Dead	Height of Tree (meters)	Size Class	Mature Tree (Branched)	Flowering or Fruiting Stage (flowers, fruits, or none)	Impact to Tree (removal, trim, relocation, other or none)	Will project activities be within 15 meters of tree	Relocation	Additional Notes
JT 467	34.57704017	-118.0201412	Live	0.6	A	No	None	Removal	Yes	Not Applicable	
JT 468	34.577041	-118.0201473	Live	0.8	A	No	None	Removal	Yes	Not Applicable	
JT 469	34.57703817	-118.0201445	Live	3.6	B	Yes	None	Removal	Yes	Not Applicable	
JT 470	34.57704683	-118.0201522	Live	1.1	B	No	None	Removal	Yes	Not Applicable	
JT 471	34.57704183	-118.0201538	Live	0.3	A	No	None	Removal	Yes	Not Applicable	
JT 472	34.57704683	-118.0201545	Live	3.5	B	Yes	None	Removal	Yes	Not Applicable	
JT 473	34.577042	-118.020158	Live	0.3	A	No	None	Removal	Yes	Not Applicable	
JT 474	34.57704467	-118.0201535	Live	0.1	A	No	None	Removal	Yes	Not Applicable	
JT 475	34.5770535	-118.0201528	Live	1	B	No	None	Removal	Yes	Not Applicable	
JT 476	34.57703917	-118.0201262	Dead	1.4	B	No	None	Removal	Yes	Not Applicable	
JT 477	34.5770395	-118.0201313	Dead	2.8	B	Yes	None	Removal	Yes	Not Applicable	

Joshua Tree	Latitude (WGS 84)	Longitude (WGS 84)	Live or Dead	Height of Tree (meters)	Size Class	Mature Tree (Branched)	Flowering or Fruiting Stage (flowers, fruits, or none)	Impact to Tree (removal, trim, relocation, other or none)	Will project activities be within 15 meters of tree	Relocation	Additional Notes
JT 478	34.57706033	-118.0201455	Dead	2.9	B	Yes	None	Removal	Yes	Not Applicable	
JT 479	34.5770375	-118.020151	Live	0.1	A	No	None	Removal	Yes	Not Applicable	
JT 480	34.57710717	-118.0202815	Live	4.4	B	Yes	None	Removal	Yes	Not Applicable	
JT 481	34.57710867	-118.0203708	Live	0.9	A	No	None	Removal	Yes	Not Applicable	
JT 482	34.57711717	-118.0203715	Live	1	B	No	None	Removal	Yes	Not Applicable	
JT 483	34.57711767	-118.0203747	Live	3	B	Yes	None	Removal	Yes	Not Applicable	
JT 484	34.5771225	-118.0203872	Live	0.2	A	No	None	Removal	Yes	Not Applicable	
JT 485	34.5771125	-118.0204065	Live	3	B	Yes	None	Removal	Yes	Not Applicable	
JT 486	34.5771295	-118.0204005	Live	4.2	B	Yes	None	Removal	Yes	Not Applicable	
JT 487	34.57705267	-118.0204462	Dead	2.1	B	No	None	Removal	Yes	Not Applicable	
JT 488	34.5770475	-118.0204432	Live	0.3	A	Yes	None	Removal	Yes	Not Applicable	

Joshua Tree	Latitude (WGS 84)	Longitude (WGS 84)	Live or Dead	Height of Tree (meters)	Size Class	Mature Tree (Branched)	Flowering or Fruiting Stage (flowers, fruits, or none)	Impact to Tree (removal, trim, relocation, other or none)	Will project activities be within 15 meters of tree	Relocation	Additional Notes
JT 489	34.57704133	-118.0204447	Live	1.1	B	Yes	None	Removal	Yes	Not Applicable	
JT 490	34.577053	-118.020453	Live	0.8	A	No	None	Removal	Yes	Not Applicable	
JT 491	34.5770535	-118.0204595	Live	1.1	B	No	None	Removal	Yes	Not Applicable	
JT 492	34.57705083	-118.0204693	Live	2	B	Yes	None	Removal	Yes	Not Applicable	
JT 493	34.57706917	-118.0205855	Live	1	B	No	None	Removal	Yes	Not Applicable	
JT 494	34.57723333	-118.0204542	Live	3	B	No	None	Removal	Yes	Not Applicable	
JT 495	34.57746583	-118.0203952	Live	2.8	B	Yes	None	Removal	Yes	Not Applicable	
JT 496	34.5774715	-118.0203977	Live	0.2	A	No	None	Removal	Yes	Not Applicable	
JT 497	34.57746367	-118.0204018	Live	0.2	A	No	None	Removal	Yes	Not Applicable	
JT 498	34.5776475	-118.0205132	Live	2.9	B	Yes	None	Removal	Yes	Not Applicable	
JT 499	34.5776185	-118.0206327	Live	0.3	A	No	None	Removal	Yes	Not Applicable	

Joshua Tree	Latitude (WGS 84)	Longitude (WGS 84)	Live or Dead	Height of Tree (meters)	Size Class	Mature Tree (Branched)	Flowering or Fruiting Stage (flowers, fruits, or none)	Impact to Tree (removal, trim, relocation, other or none)	Will project activities be within 15 meters of tree	Relocation	Additional Notes
JT 500	34.57762733	-118.0206338	Live	0.3	A	No	None	Removal	Yes	Not Applicable	
JT 501	34.57762933	-118.0206412	Live	3.6	B	Yes	None	Removal	Yes	Not Applicable	
JT 502	34.57762883	-118.0206445	Live	0.9	A	No	None	Removal	Yes	Not Applicable	
JT 503	34.577303	-118.0202165	Live	1.2	B	No	None	Removal	Yes	Not Applicable	
JT 504	34.5773145	-118.0202342	Live	0.2	A	No	None	Removal	Yes	Not Applicable	
JT 505	34.5773225	-118.0202307	Dead	2.1	B	Yes	None	Removal	Yes	Not Applicable	
JT 506	34.5773485	-118.0202275	Live	3.6	B	Yes	None	Removal	Yes	Not Applicable	
JT 507	34.577358	-118.0202395	Live	2.2	B	Yes	None	Removal	Yes	Not Applicable	
JT 508	34.577442	-118.0201148	Live	0.8	A	No	None	Removal	Yes	Not Applicable	
JT 509	34.577449	-118.0201153	Live	0.2	A	No	None	Removal	Yes	Not Applicable	
JT 510	34.57744283	-118.0201243	Live	0.1	A	No	None	Removal	Yes	Not Applicable	

Joshua Tree	Latitude (WGS 84)	Longitude (WGS 84)	Live or Dead	Height of Tree (meters)	Size Class	Mature Tree (Branched)	Flowering or Fruiting Stage (flowers, fruits, or none)	Impact to Tree (removal, trim, relocation, other or none)	Will project activities be within 15 meters of tree	Relocation	Additional Notes
JT 511	34.57746183	-118.0201252	Dead	0.7	A	Yes	None	Removal	Yes	Not Applicable	
JT 512	34.577448	-118.0201303	Live	0.3	A	No	None	Removal	Yes	Not Applicable	
JT 513	34.57745	-118.0201272	Live	1.9	B	No	None	Removal	Yes	Not Applicable	
JT 514	34.57744717	-118.020138	Live	0.2	A	No	None	Removal	Yes	Not Applicable	
JT 515	34.577454	-118.0201302	Dead	2.3	B	No	None	Removal	Yes	Not Applicable	
JT 516	34.57744533	-118.0199397	Live	4.1	B	Yes	None	Removal	Yes	Not Applicable	
JT 517	34.57745883	-118.0199572	Live	3.5	B	Yes	None	Removal	Yes	Not Applicable	
JT 518	34.57762417	-118.019709	Dead	2	B	Yes	None	Removal	Yes	Not Applicable	
JT 519	34.57780167	-118.0197825	Dead	1.7	B	No	None	Removal	Yes	Not Applicable	
JT 520	34.57784533	-118.0200962	Live	0.1	A	No	None	Removal	Yes	Not Applicable	
JT 521	34.5778405	-118.0201147	Live	0.2	A	No	None	Removal	Yes	Not Applicable	

Joshua Tree	Latitude (WGS 84)	Longitude (WGS 84)	Live or Dead	Height of Tree (meters)	Size Class	Mature Tree (Branched)	Flowering or Fruiting Stage (flowers, fruits, or none)	Impact to Tree (removal, trim, relocation, other or none)	Will project activities be within 15 meters of tree	Relocation	Additional Notes
JT 522	34.5778425	-118.020119	Live	0.6	A	No	None	Removal	Yes	Not Applicable	
JT 523	34.57784583	-118.0201213	Live	0.2	A	No	None	Removal	Yes	Not Applicable	
JT 524	34.57784783	-118.0201272	Live	0.2	A	No	None	Removal	Yes	Not Applicable	
JT 525	34.57785683	-118.0201123	Live	0.8	A	No	None	Removal	Yes	Not Applicable	
JT 526	34.57786067	-118.0201215	Live	0.2	A	No	None	Removal	Yes	Not Applicable	
JT 527	34.57785667	-118.020125	Live	2	B	Yes	None	Removal	Yes	Not Applicable	
JT 528	34.57775	-118.0202558	Dead	0.8	A	No	None	Removal	Yes	Not Applicable	
JT 529	34.57774117	-118.0202522	Dead	2.5	B	Yes	None	Removal	Yes	Not Applicable	
JT 530	34.577784	-118.0202805	Live	4.5	B	Yes	None	Removal	Yes	Not Applicable	
JT 531	34.577884	-118.0205907	Live	4.1	B	Yes	None	Removal	Yes	Not Applicable	
JT 532	34.57792583	-118.0204687	Live	2.9	B	Yes	None	Removal	Yes	Not Applicable	

Joshua Tree	Latitude (WGS 84)	Longitude (WGS 84)	Live or Dead	Height of Tree (meters)	Size Class	Mature Tree (Branched)	Flowering or Fruiting Stage (flowers, fruits, or none)	Impact to Tree (removal, trim, relocation, other or none)	Will project activities be within 15 meters of tree	Relocation	Additional Notes
JT 533	34.5782445	-118.0204728	Dead	2.4	B	Yes	None	Removal	Yes	Not Applicable	
JT 534	34.5784465	-118.0204978	Dead	0.6	A	No	None	Removal	Yes	Not Applicable	
JT 535	34.57848467	-118.0205053	Dead	1.6	B	No	None	Removal	Yes	Not Applicable	
JT 536	34.57844067	-118.0204202	Live	0.6	A	No	None	Removal	Yes	Not Applicable	
JT 537	34.578434	-118.0204147	Dead	2.1	B	Yes	None	Removal	Yes	Not Applicable	
JT 538	34.57843267	-118.0204195	Dead	2	B	No	None	Removal	Yes	Not Applicable	
JT 539	34.57841717	-118.0202485	Dead	0.7	A	Yes	None	Removal	Yes	Not Applicable	
JT 540	34.57841833	-118.0202483	Dead	1	B	No	None	Removal	Yes	Not Applicable	
JT 541	34.57840917	-118.020247	Dead	2	B	No	None	Removal	Yes	Not Applicable	
JT 542	34.57854733	-118.0201673	Live	0.5	A	No	None	Removal	Yes	Not Applicable	
JT 543	34.5782075	-118.0202097	Live	3.6	B	Yes	None	Removal	Yes	Not Applicable	

Joshua Tree	Latitude (WGS 84)	Longitude (WGS 84)	Live or Dead	Height of Tree (meters)	Size Class	Mature Tree (Branched)	Flowering or Fruiting Stage (flowers, fruits, or none)	Impact to Tree (removal, trim, relocation, other or none)	Will project activities be within 15 meters of tree	Relocation	Additional Notes
JT 544	34.57821033	-118.020204	Live	0.1	A	No	None	Removal	Yes	Not Applicable	
JT 545	34.578046	-118.0199133	Live	2.1	B	Yes	None	Removal	Yes	Not Applicable	
JT 546	34.57803733	-118.0197355	Dead	2.2	B	Yes	None	Removal	Yes	Not Applicable	
JT 547	34.57817533	-118.0197042	Live	1	B	No	None	Removal	Yes	Not Applicable	
JT 548	34.57817467	-118.0197035	Live	0.2	A	No	None	Removal	Yes	Not Applicable	
JT 549	34.5781745	-118.0197022	Live	0.7	A	No	None	Removal	Yes	Not Applicable	
JT 550	34.57817933	-118.019707	Live	0.2	A	No	None	Removal	Yes	Not Applicable	
JT 551	34.578181	-118.0197138	Live	2.5	B	Yes	None	Removal	Yes	Not Applicable	
JT 552	34.57818167	-118.019692	Live	0.8	A	No	None	Removal	Yes	Not Applicable	
JT 553	34.5781885	-118.0196992	Live	2	B	No	None	Removal	Yes	Not Applicable	
JT 554	34.57818933	-118.0196963	Live	0.2	A	No	None	Removal	Yes	Not Applicable	

Joshua Tree	Latitude (WGS 84)	Longitude (WGS 84)	Live or Dead	Height of Tree (meters)	Size Class	Mature Tree (Branched)	Flowering or Fruiting Stage (flowers, fruits, or none)	Impact to Tree (removal, trim, relocation, other or none)	Will project activities be within 15 meters of tree	Relocation	Additional Notes
JT 555	34.578189	-118.0197112	Live	0.2	A	No	None	Removal	Yes	Not Applicable	
JT 556	34.5781865	-118.0197125	Live	0.2	A	No	None	Removal	Yes	Not Applicable	
JT 557	34.57818267	-118.019702	Live	0.1	A	No	None	Removal	Yes	Not Applicable	
JT 558	34.57818233	-118.0197043	Live	0.1	A	No	None	Removal	Yes	Not Applicable	
JT 559	34.57818617	-118.0197107	Live	0.1	A	No	None	Removal	Yes	Not Applicable	
JT 560	34.57818233	-118.0197102	Live	0.2	A	No	None	Removal	Yes	Not Applicable	
JT 561	34.57817883	-118.019716	Live	0.1	A	No	None	Removal	Yes	Not Applicable	
JT 562	34.578177	-118.019724	Live	0.2	A	No	None	Removal	Yes	Not Applicable	
JT 563	34.57817133	-118.0197142	Live	0.2	A	No	None	Removal	Yes	Not Applicable	
JT 564	34.57817183	-118.0197198	Live	0.3	A	No	None	Removal	Yes	Not Applicable	
JT 565	34.57824033	-118.0198447	Live	3.2	B	Yes	None	Removal	Yes	Not Applicable	

Joshua Tree	Latitude (WGS 84)	Longitude (WGS 84)	Live or Dead	Height of Tree (meters)	Size Class	Mature Tree (Branched)	Flowering or Fruiting Stage (flowers, fruits, or none)	Impact to Tree (removal, trim, relocation, other or none)	Will project activities be within 15 meters of tree	Relocation	Additional Notes
JT 566	34.57826183	-118.0198682	Live	1.9	B	Yes	None	Removal	Yes	Not Applicable	
JT 567	34.57827633	-118.0198715	Live	2.8	B	Yes	None	Removal	Yes	Not Applicable	
JT 568	34.57821783	-118.0199585	Dead	1.1	B	Yes	None	Removal	Yes	Not Applicable	
JT 569	34.5783685	-118.0199248	Dead	1.6	B	Yes	None	Removal	Yes	Not Applicable	
JT 570	34.5783635	-118.0199057	Dead	1.9	B	Yes	None	Removal	Yes	Not Applicable	
JT 571	34.57836117	-118.0199008	Live	2.8	B	No	None	Removal	Yes	Not Applicable	
JT 572	34.57839433	-118.0199195	Live	0.2	A	No	None	Removal	Yes	Not Applicable	
JT 573	34.5783895	-118.0199262	Live	3.3	B	Yes	None	Removal	Yes	Not Applicable	
JT 574	34.57840483	-118.0199418	Dead	2.2	B	Yes	None	Removal	Yes	Not Applicable	
JT 575	34.57840233	-118.0199488	Live	3.4	B	Yes	None	Removal	Yes	Not Applicable	
JT 576	34.5784205	-118.0199552	Live	2.3	B	Yes	None	Removal	Yes	Not Applicable	

Joshua Tree	Latitude (WGS 84)	Longitude (WGS 84)	Live or Dead	Height of Tree (meters)	Size Class	Mature Tree (Branched)	Flowering or Fruiting Stage (flowers, fruits, or none)	Impact to Tree (removal, trim, relocation, other or none)	Will project activities be within 15 meters of tree	Relocation	Additional Notes
JT 577	34.578432	-118.0199647	Live	3.2	B	Yes	None	Removal	Yes	Not Applicable	
JT 578	34.57837083	-118.0200403	Live	0.5	A	No	None	Removal	Yes	Not Applicable	
JT 579	34.57837367	-118.0200462	Live	0.7	A	No	None	Removal	Yes	Not Applicable	
JT 580	34.5783765	-118.0200542	Live	0.3	A	No	None	Removal	Yes	Not Applicable	
JT 581	34.57836183	-118.0200575	Live	3.3	B	Yes	None	Removal	Yes	Not Applicable	
JT 582	34.57836467	-118.0200613	Live	0.6	A	No	None	Removal	Yes	Not Applicable	
JT 583	34.57836717	-118.0200717	Live	0.1	A	Yes	None	Removal	Yes	Not Applicable	
JT 584	34.57856367	-118.019904	Live	3	B	Yes	None	Removal	Yes	Not Applicable	
JT 585	34.5785755	-118.0198995	Live	3.4	B	Yes	None	Removal	Yes	Not Applicable	
JT 586	34.57858933	-118.0198922	Live	0.6	A	No	None	Removal	Yes	Not Applicable	
JT 587	34.578777	-118.0200588	Live	2	B	No	None	Removal	Yes	Not Applicable	

Joshua Tree	Latitude (WGS 84)	Longitude (WGS 84)	Live or Dead	Height of Tree (meters)	Size Class	Mature Tree (Branched)	Flowering or Fruiting Stage (flowers, fruits, or none)	Impact to Tree (removal, trim, relocation, other or none)	Will project activities be within 15 meters of tree	Relocation	Additional Notes
JT 588	34.57874717	-118.0202955	Dead	4.4	B	Yes	None	Removal	Yes	Not Applicable	
JT 589	34.57886933	-118.0201847	Live	2.7	B	Yes	None	Removal	Yes	Not Applicable	
JT 590	34.57885983	-118.0203347	Live	2.8	B	Yes	None	Removal	Yes	Not Applicable	
JT 591	34.57886533	-118.020344	Live	0.6	A	Yes	None	Removal	Yes	Not Applicable	
JT 592	34.57887783	-118.0203735	Dead	1.6	B	Yes	None	Removal	Yes	Not Applicable	
JT 593	34.57868683	-118.0205863	Live	0.3	A	No	None	Removal	Yes	Not Applicable	
JT 594	34.578689	-118.0205812	Live	3.7	B	Yes	None	Removal	Yes	Not Applicable	
JT 595	34.57868283	-118.020598	Live	0.2	A	No	None	Removal	Yes	Not Applicable	
JT 596	34.57868567	-118.0206012	Live	0.2	A	No	None	Removal	Yes	Not Applicable	
JT 597	34.57875217	-118.0205578	Live	2	B	Yes	None	Removal	Yes	Not Applicable	
JT 598	34.57877783	-118.0205635	Dead	2.1	B	Yes	None	Removal	Yes	Not Applicable	

Joshua Tree	Latitude (WGS 84)	Longitude (WGS 84)	Live or Dead	Height of Tree (meters)	Size Class	Mature Tree (Branched)	Flowering or Fruiting Stage (flowers, fruits, or none)	Impact to Tree (removal, trim, relocation, other or none)	Will project activities be within 15 meters of tree	Relocation	Additional Notes
JT 599	34.5787795	-118.0205565	Dead	2.4	B	No	None	Removal	Yes	Not Applicable	
JT 600	34.57909017	-118.0204228	Live	4	B	Yes	None	Removal	Yes	Not Applicable	
JT 601	34.57908133	-118.0204152	Live	2.3	B	No	None	Removal	Yes	Not Applicable	
JT 602	34.5791685	-118.0204578	Live	4.1	B	Yes	None	Removal	Yes	Not Applicable	
JT 603	34.57917217	-118.0204652	Live	0.6	A	No	None	Removal	Yes	Not Applicable	
JT 604	34.5791825	-118.0204648	Live	0.2	A	No	None	Removal	Yes	Not Applicable	
JT 605	34.57918617	-118.0204592	Live	0.3	A	No	None	Removal	Yes	Not Applicable	
JT 606	34.579177	-118.0204562	Live	2	B	No	None	Removal	Yes	Not Applicable	
JT 607	34.579217	-118.0205213	Live	2	B	No	None	Removal	Yes	Not Applicable	
JT 608	34.57921183	-118.0205327	Live	0.1	A	No	None	Removal	Yes	Not Applicable	
JT 609	34.57934683	-118.0204315	Dead	2.2	B	Yes	None	Removal	Yes	Not Applicable	

Joshua Tree	Latitude (WGS 84)	Longitude (WGS 84)	Live or Dead	Height of Tree (meters)	Size Class	Mature Tree (Branched)	Flowering or Fruiting Stage (flowers, fruits, or none)	Impact to Tree (removal, trim, relocation, other or none)	Will project activities be within 15 meters of tree	Relocation	Additional Notes
JT 610	34.57951483	-118.020539	Dead	3.1	B	Yes	None	Removal	Yes	Not Applicable	
JT 611	34.57949017	-118.0205152	Dead	2.3	B	Yes	None	Removal	Yes	Not Applicable	
JT 612	34.57938383	-118.0201412	Live	2.2	B	No	None	Removal	Yes	Not Applicable	
JT 613	34.5793065	-118.0202147	Live	2.7	B	Yes	None	Removal	Yes	Not Applicable	
JT 614	34.57913033	-118.0202245	Live	2.3	B	No	None	Removal	Yes	Not Applicable	
JT 615	34.57914517	-118.0202348	Live	2.2	B	No	None	Removal	Yes	Not Applicable	
JT 616	34.579139	-118.0202383	Live	0.3	A	No	None	Removal	Yes	Not Applicable	
JT 617	34.57913783	-118.0202357	Live	2.6	B	No	None	Removal	Yes	Not Applicable	
JT 618	34.57914483	-118.0202405	Live	0.4	A	No	None	Removal	Yes	Not Applicable	
JT 619	34.57914067	-118.0202392	Live	0.3	A	No	None	Removal	Yes	Not Applicable	
JT 620	34.57912567	-118.0202395	Live	0.6	A	No	None	Removal	Yes	Not Applicable	

Joshua Tree	Latitude (WGS 84)	Longitude (WGS 84)	Live or Dead	Height of Tree (meters)	Size Class	Mature Tree (Branched)	Flowering or Fruiting Stage (flowers, fruits, or none)	Impact to Tree (removal, trim, relocation, other or none)	Will project activities be within 15 meters of tree	Relocation	Additional Notes
JT 621	34.5791215	-118.0202422	Live	4	B	Yes	None	Removal	Yes	Not Applicable	
JT 622	34.57912433	-118.0202422	Live	0.2	A	No	None	Removal	Yes	Not Applicable	
JT 623	34.57915	-118.0200967	Live	4.3	B	Yes	None	Removal	Yes	Not Applicable	
JT 624	34.5790415	-118.020084	Live	5.9	C	Yes	None	Removal	Yes	Not Applicable	
JT 625	34.5788195	-118.0197645	Live	4.3	B	Yes	None	Removal	Yes	Not Applicable	
JT 626	34.57895233	-118.0198262	Dead	3.3	B	Yes	None	Removal	Yes	Not Applicable	
JT 627	34.578956	-118.0197963	Live	5.8	C	Yes	None	Removal	Yes	Not Applicable	
JT 628	34.57890817	-118.0196307	Live	1.7	B	No	None	Removal	Yes	Not Applicable	
JT 629	34.579066	-118.0196103	Live	5.1	C	Yes	None	Removal	Yes	Not Applicable	
JT 630	34.5790785	-118.0196115	Live	0.2	A	No	None	Removal	Yes	Not Applicable	
JT 631	34.57907017	-118.0194583	Live	5.1	C	Yes	None	Removal	Yes	Not Applicable	

Table 4-2 Continued: Western Joshua Tree Census table amendments in conjunction with CDFW. (Note: The GPS locations of the Joshua trees are provided below along with the height and a general health assessment.) (Note: The JT numbers correspond to the tag numbers placed on the Joshua trees.)

Joshua Tree	Latitude (WGS 84)	Longitude (WGS 84)	Live or Dead	Height of Tree (meters)	Size Class	Mature Tree (Branched)	Flowering or Fruiting Stage (flowers, fruits, or none)	Impact to Tree (removal, trim, relocation, other or none)	Will project activities be within 15 meters of tree	Relocation	Additional Notes
JT 2701	34.576414	-118.0191455	Live	0.1	A	No	None	Removal	Yes	Not Applicable	
JT 2702	34.57641	-118.0191108	Live	0.2	A	No	None	Removal	Yes	Not Applicable	
JT 2703	34.5764045	-118.019136	Live	0.3	A	No	None	Removal	Yes	Not Applicable	
JT 2704	34.57640967	-118.0191407	Live	0.3	A	No	None	Removal	Yes	Not Applicable	
JT 2705	34.57638783	-118.0186137	Live	3.8	B	Yes	None	Removal	Yes	Not Applicable	
JT 2706	34.576391	-118.0185868	Live	0.2	A	No	None	Removal	Yes	Not Applicable	
JT 2707	34.5763975	-118.0185963	Live	0.2	A	No	None	Removal	Yes	Not Applicable	
JT 2708	34.57639217	-118.0185953	Live	0.3	A	No	None	Removal	Yes	Not Applicable	

Joshua Tree	Latitude (WGS 84)	Longitude (WGS 84)	Live or Dead	Height of Tree (meters)	Size Class	Mature Tree (Branched)	Flowering or Fruiting Stage (flowers, fruits, or none)	Impact to Tree (removal, trim, relocation, other or none)	Will project activities be within 15 meters of tree	Relocation	Additional Notes
JT 2709	34.57639167	-118.0185957	Live	0.3	A	No	None	Removal	Yes	Not Applicable	
JT 2710	34.576392	-118.0185842	Live	0.9	A	No	None	Removal	Yes	Not Applicable	
JT 2711	34.576401	-118.0185702	Live	0.3	A	No	None	Removal	Yes	Not Applicable	
JT 2712	34.57640333	-118.0185668	Live	0.2	A	No	None	Removal	Yes	Not Applicable	
JT 2713	34.576394	-118.01855	Live	0.3	A	No	None	Removal	Yes	Not Applicable	
JT 2714	34.57637333	-118.0185658	Live	0.4	A	No	None	Removal	Yes	Not Applicable	
JT 2715	34.57636417	-118.0185577	Live	0.5	A	No	None	Removal	Yes	Not Applicable	
JT 2716	34.57635733	-118.0185548	Live	0.4	A	No	None	Removal	Yes	Not Applicable	
JT 2717	34.576353	-118.0185658	Live	0.4	A	No	None	Removal	Yes	Not Applicable	
JT 2718	34.57636083	-118.018565	Live	0.4	A	No	None	Removal	Yes	Not Applicable	
JT 2719	34.57637017	-118.0185732	Live	0.3	A	No	None	Removal	Yes	Not Applicable	

Joshua Tree	Latitude (WGS 84)	Longitude (WGS 84)	Live or Dead	Height of Tree (meters)	Size Class	Mature Tree (Branched)	Flowering or Fruiting Stage (flowers, fruits, or none)	Impact to Tree (removal, trim, relocation, other or none)	Will project activities be within 15 meters of tree	Relocation	Additional Notes
JT 2720	34.57638017	-118.018595	Live	0.2	A	No	None	Removal	Yes	Not Applicable	
JT 2721	34.57671983	-118.0187	Live	1	B	No	None	Removal	Yes	Not Applicable	
JT 2722	34.5767355	-118.0187017	Live	0.2	A	No	None	Removal	Yes	Not Applicable	
JT 2723	34.57672633	-118.0187158	Live	0.1	A	No	None	Removal	Yes	Not Applicable	
JT 2724	34.5767265	-118.018698	Live	0.4	A	No	None	Removal	Yes	Not Applicable	
JT 2725	34.576684	-118.020512	Live	0.4	A	No	None	Removal	Yes	Not Applicable	
JT 2726	34.57666233	-118.0205048	Live	0.3	A	No	None	Removal	Yes	Not Applicable	
JT 2727	34.57666733	-118.0204962	Live	0.3	A	No	None	Removal	Yes	Not Applicable	
JT 2728	34.576657	-118.0205118	Live	0.3	A	No	None	Removal	Yes	Not Applicable	
JT 2729	34.57745717	-118.019975	Live	2.3	B	Yes	None	Removal	Yes	Not Applicable	
JT 2730	34.577452	-118.0199837	Live	0.2	A	No	None	Removal	Yes	Not Applicable	

Joshua Tree	Latitude (WGS 84)	Longitude (WGS 84)	Live or Dead	Height of Tree (meters)	Size Class	Mature Tree (Branched)	Flowering or Fruiting Stage (flowers, fruits, or none)	Impact to Tree (removal, trim, relocation, other or none)	Will project activities be within 15 meters of tree	Relocation	Additional Notes
JT 2731	34.57744617	-118.0199805	Live	0.2	A	No	None	Removal	Yes	Not Applicable	
JT 2732	34.57961583	-118.0196015	Live	0.2	A	No	None	Removal	Yes	Not Applicable	
JT 2733	34.5796405	-118.0195983	Live	0.3	A	No	None	Removal	Yes	Not Applicable	
JT 2734	34.57962883	-118.0195993	Live	0.2	A	No	None	Removal	Yes	Not Applicable	
JT 2735	34.5796145	-118.0195922	Live	0.1	A	No	None	Removal	Yes	Not Applicable	
JT 2736	34.57961383	-118.0195925	Live	0.1	A	No	None	Removal	Yes	Not Applicable	
JT 2737	34.579609	-118.0195918	Live	0.3	A	No	None	Removal	Yes	Not Applicable	
JT 2738	34.57933967	-118.0185698	Live	0.1	A	No	None	Removal	Yes	Not Applicable	
JT 2739	34.57934217	-118.0185642	Live	0.1	A	No	None	Removal	Yes	Not Applicable	
JT 2740	34.57933667	-118.0185558	Live	0.1	A	No	None	Removal	Yes	Not Applicable	
JT 2741	34.5793325	-118.01856	Live	0.1	A	No	None	Removal	Yes	Not Applicable	

Joshua Tree	Latitude (WGS 84)	Longitude (WGS 84)	Live or Dead	Height of Tree (meters)	Size Class	Mature Tree (Branched)	Flowering or Fruiting Stage (flowers, fruits, or none)	Impact to Tree (removal, trim, relocation, other or none)	Will project activities be within 15 meters of tree	Relocation	Additional Notes
JT 2742	34.57932483	-118.0185957	Live	0.2	A	No	None	Removal	Yes	Not Applicable	
JT 2743	34.57856533	-118.0193607	Live	0.1	A	No	None	Removal	Yes	Not Applicable	
JT 2744	34.57856917	-118.019359	Live	0.1	A	No	None	Removal	Yes	Not Applicable	
JT 2745	34.578578	-118.0193698	Live	0.1	A	No	None	Removal	Yes	Not Applicable	
JT 2746	34.578582	-118.0193787	Live	0.1	A	No	None	Removal	Yes	Not Applicable	
JT 2747	34.57856483	-118.0193902	Live	0.2	A	No	None	Removal	Yes	Not Applicable	
JT 2748	34.57747717	-118.0192977	Live	0.1	A	No	None	Removal	Yes	Not Applicable	
JT 2749	34.57746817	-118.0192965	Live	0.3	A	No	None	Removal	Yes	Not Applicable	
JT 2750	34.57717533	-118.0193343	Live	0.1	A	No	None	Removal	Yes	Not Applicable	
JT 2751	34.57716717	-118.0193465	Live	0.1	A	No	None	Removal	Yes	Not Applicable	
JT 2752	34.57718883	-118.0193488	Live	0.1	A	No	None	Removal	Yes	Not Applicable	

Joshua Tree	Latitude (WGS 84)	Longitude (WGS 84)	Live or Dead	Height of Tree (meters)	Size Class	Mature Tree (Branched)	Flowering or Fruiting Stage (flowers, fruits, or none)	Impact to Tree (removal, trim, relocation, other or none)	Will project activities be within 15 meters of tree	Relocation	Additional Notes
JT 2753	34.5771995	-118.0193523	Live	0.1	A	No	None	Removal	Yes	Not Applicable	
JT 2754	34.5771955	-118.0193588	Live	0.2	A	No	None	Removal	Yes	Not Applicable	
JT 2755	34.57682783	-118.0192088	Live	0.2	A	No	None	Removal	Yes	Not Applicable	
JT 2756	34.57683767	-118.0192167	Live	0.2	A	No	None	Removal	Yes	Not Applicable	
JT 2757	34.5767995	-118.0192465	Live	0.1	A	No	None	Removal	Yes	Not Applicable	
JT 2758	34.57680433	-118.019257	Live	0.1	A	No	None	Removal	Yes	Not Applicable	

5.0 CONCLUSIONS

The site is located within the reduced mitigation fee area by CDFW for the Western Joshua Tree Conservation Act. A total of 514 Joshua trees occur within the boundaries of the property (Figures 1, 2 and 3). As stated above, based on the evaluation and analysis of each tree it was determined that 251 (48.83%) Joshua trees are less than 1 meter in height and are categorized under size class “A”. There are 252 (49.03%) Joshua trees 1 meter or greater but less than 5 meters in height categorized under size class “B”. There are 11 (2.14%) Joshua trees 5 meters or greater in height categorized under size class “C”. As indicated in Table 4-1, the majority of the Joshua trees are less than 5 meters in height.

As of July 10, 2023, California legislature passed and signed the Western Joshua Tree Conservation Act (WJTCA, Senate Bill 122) into effect listing the western Joshua tree (*Yucca brevifolia*) as a candidate endangered species. The WJTCA authorizes CDFW to oversee the various permitting processes dealing with mitigation and/or removal of western Joshua trees. Therefore, any attempt to remove a Joshua tree from its current position will require a California Endangered Species Act Incidental Take Permit (CESA, ITP) or a Western Joshua Tree Conservation Act Incidental Take Permit (WJTCA, ITP). CDFW is the lead agency in the decision making of the projects forward progress pertaining to western Joshua trees.

6.0 REFERENCES

- Brittingham, S. and W. Lawrence. 2000. Facilitation of *Yucca brevifolia* Recruitment by Mojave Desert Shrubs. *Western North American Naturalist* 60(4), pp. 374-383.
- City of Hesperia. 1990. Native Desert Vegetation Ordinance, Municipal Code: Chapter 16.24.
- Hickman, James C. The Jepson Manual Higher Plants of California. University of California Press. Berkeley, CA. 3rd Edition. 1996.
- Holland, Robert F. 1986 Preliminary Description of the Terrestrial Natural Communities of California. Prepared for the California Natural Diversity Data Base. California Department of Fish and Game. Sacramento, California. 160 pp.
- Johnson, H. 1976 vegetation and Plant Communities of Southern California Deserts- a functional view. In Symposium proceedings: Plant communities of Southern California. June Latting, editor. California Native Plant Society, Spec. No. 2 Berkeley, CA.
- Munz, Philip A. 1974. A Flora of Southern California. University of California Press, Berkeley, California. 1086 pp.
- SB 122, Committee on Budget and Fiscal Review. Public resources trailer bill. SEC 5, Chapter 11.5. Western Joshua Tree Conservation Act.

7.0 CERTIFICATION

I hereby certify the statements furnished above and in the attached exhibits, present the data and information required for this Joshua tree survey and that the facts, statements, and information presented are true and correct to the best of my knowledge and belief. Field work conducted for this survey was performed by Ryan Hunter and Brian Bunyi.

Date: January 25, 2023, Signed: *Ryan Hunter*
Brian Bunyi


Field Work Performed by: Ryan Hunter
Lead Environmental Scientist & Wildlife Biologist

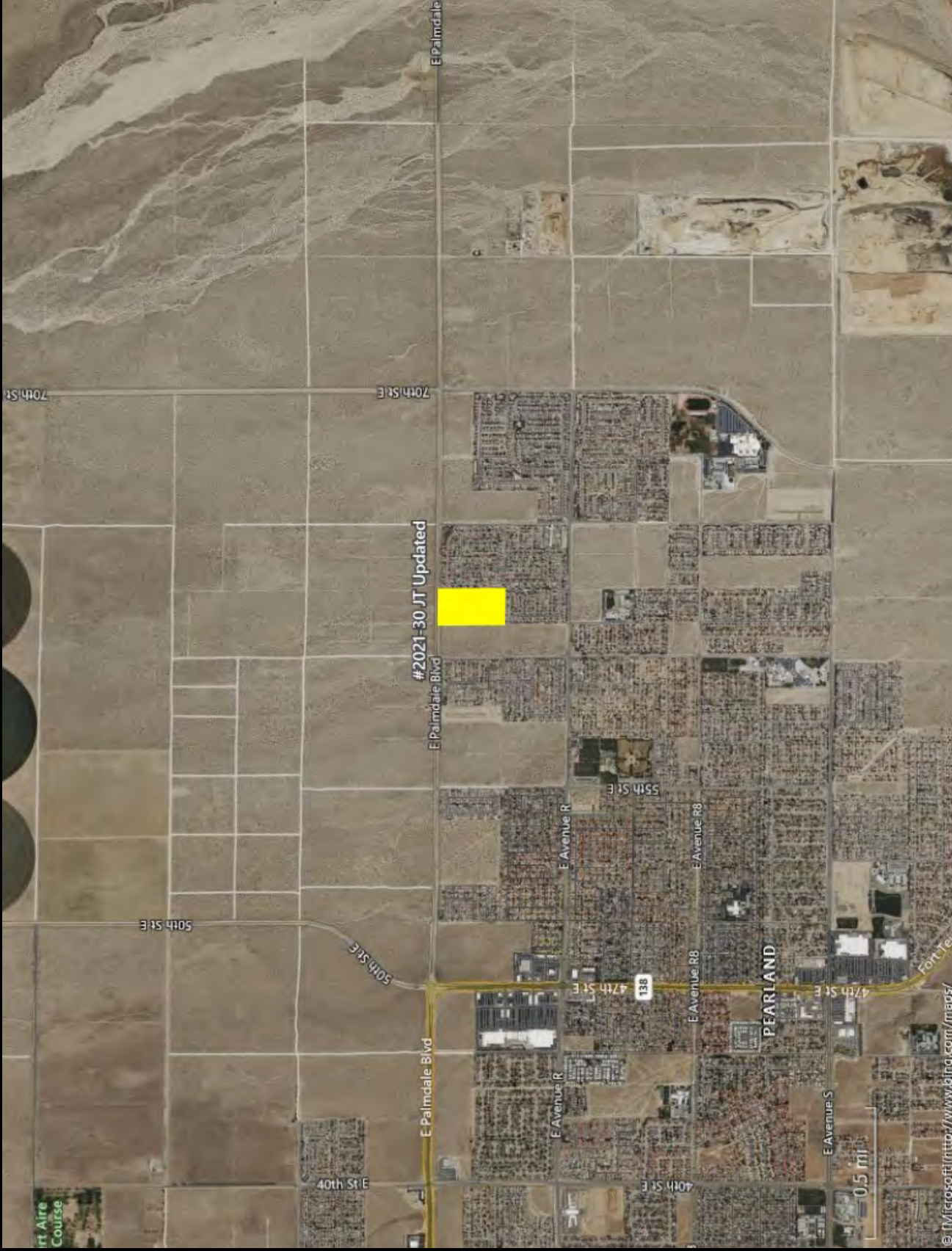
Brian Bunyi
Environmental Scientist & Wildlife Biologist

APPENDIX A

Figures

Legend

 Project Boundary




Source:	Uinta Software
Acreege:	19.84-Acres (Approximate)
Project #:	2021-30 JT Updated 2023

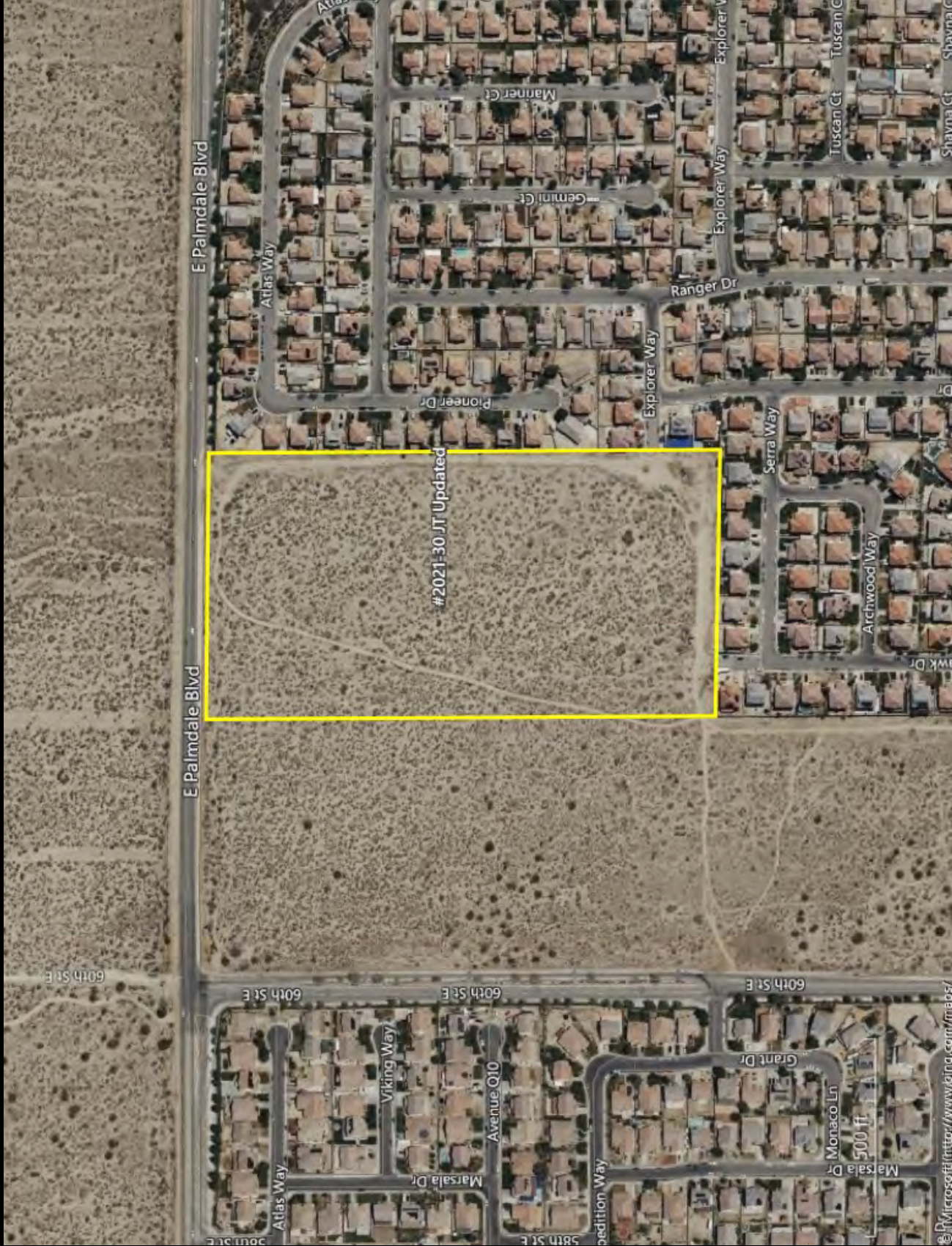
Located south of Palmdale Blvd. and east of 60th St. East in the City of Palmdale, CA.

**Figure 1: Regional Exhibit
Produced By: RCA Associates,
Inc.**



Legend

 Project Boundary



Source:	Ujnta Software
Acreage:	19.84-Acres (Approximate)
Project #:	2021-30 JT Updated 2023

Located south of Palmdale Blvd. and east of 60th St. East in the City of Palmdale, CA.

**Figure 2: Vicinity Exhibit
Produced By: RCA Associates,
Inc.**

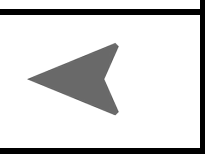




Source:	Uinta Software
Acreage:	19.84-Acres (Approximate)
Project #:	2021-30 JT Updated

Located south of Palmdale Blvd. and east of 60th St. East in the City of Palmdale, CA.

Figure 3: Locations of Western Joshua Trees
 Produced By: RCA Associates, Inc.



APPENDIX B

**California Fish and Game Code
(1927)**



Code Search

Text Search

[Up^](#) [Add To My Favorites](#)

FISH AND GAME CODE - FGC

DIVISION 2. DEPARTMENT OF FISH AND WILDLIFE [700 - 1958] (*Heading of Division 2 amended by Stats. 2015, Ch. 154, Sec. 21.*)

CHAPTER 11.5. Western Joshua Tree Conservation Act [1927 - 1927.12] (*Chapter 11.5 added by Stats. 2023, Ch. 51, Sec. 5.*)

1927. This chapter shall be known, and may be cited as, the Western Joshua Tree Conservation Act.

(*Added by Stats. 2023, Ch. 51, Sec. 5. (SB 122) Effective July 10, 2023. Conditionally operative pursuant to Section 1927.2.*)

1927.1. For purposes of this chapter, the following definitions apply:

- (a) "Accessory structure" means a subordinate structure, the use of which is incidental to an existing or contemporaneously constructed single-family residence, including, an accessory dwelling unit, addition to an existing single-family residence, garage, carport, swimming pool, patio, greenhouse, storage shed, gazebo, septic tank, sewer connection, solar panels, fence, or gravel or paved driveway.
- (b) "California Endangered Species Act" means the act established pursuant to Chapter 1.5 (commencing with Section 2050) of Division 3.
- (c) "Conserve" or "conservation" means to use, and the use of, methods and procedures that are necessary to bring species listed pursuant to Chapter 1.5 (commencing with Section 2050) of Division 3 to the point at which the measures provided pursuant to Chapter 1.5 (commencing with Section 2050) of Division 3 are no longer necessary, and for species that are not listed to maintain or enhance the condition of the species so that listing will not become necessary.
- (d) "Dead western Joshua tree" means a western Joshua tree that meets at least one of the following criteria:
- (1) Has not burned and has no green leaves, no new growth on the main stem, and no basal sprouts.
 - (2) Has partially or fully burned at least 18 months prior and otherwise satisfies paragraph (1).
 - (3) Has fallen and is completely detached from its roots or has fallen and its roots are no longer in contact with the soil.
- (e) "Desert native plant specialist" means an arborist certified by the International Society of Arborists, or an individual with at least five years of professional experience with relocation or restoration of native California desert vegetation.
- (f) "Fee" means the elective fee described in subdivisions (d) and (e) of Section 1927.3, which is to be deposited into the fund.
- (g) "Fund" means the Western Joshua Tree Conservation Fund as described in Section 1927.5.
- (h) "Multifamily residence" means an apartment building, rowhouse, town house, condominium, or manufactured building that consists of two or more attached dwelling units designed for occupancy by two or more families living independently of one another.

(i) "Public works project" means a project involving the erection, construction, alteration, repair, or improvement of any public structure, building, road, or other public improvement of any kind.

(j) "Relocated" or "relocation" means the removal of a living western Joshua tree and a sufficient portion of its root mass from the ground and transplanting it.

(k) "Single-family residence" means a single detached building that has been, or will be, constructed and used as living facilities, including provisions for sleeping, eating, cooking, and sanitation, as required by the California Building Standards Code, for not more than one household.

(l) "Western Joshua tree" means *Yucca brevifolia*, an evergreen, tree-like plant that has been treated as a member of the asparagus family (*Asparagaceae*).

(Added by Stats. 2023, Ch. 51, Sec. 5. (SB 122) Effective July 10, 2023. Conditionally operative pursuant to Section 1927.2.)

1927.2. (a) No person or public agency shall import into this state, export out of this state, or take, possess, purchase, or sell within this state, a western Joshua tree or any part or product of the tree, except as authorized pursuant to any of the following, as applicable:

(1) This chapter.

(2) The California Endangered Species Act.

(3) The Natural Community Conservation Planning Act (Chapter 10 (commencing with Section 2800) of Division 3).

(b) During any period in which the western Joshua tree has been designated by the commission as a candidate for listing under the California Endangered Species Act, any person or public agency seeking a take authorization for the western Joshua tree may obtain a take authorization as provided by the California Endangered Species Act or by electing to pay the fees set forth in Section 1927.3.

(c) (1) This chapter is a change in state law, within the meaning of paragraph (1) of subdivision (c) of Section 2075.5, that has a direct and significant impact on the commission's determination as to whether the petitioned action is warranted. Pursuant to subdivision (c) of Section 2075.5, the commission shall reopen the administrative record for the commission's determination for the purpose of assessing the impact of the conservation program established by this chapter.

(2) In making the assessment described in paragraph (1), the commission shall consider all of the following:

(A) The effectiveness of any conservation measures funded through expenditures of fees by the department pursuant to Section 1927.5.

(B) The conservation plan developed by the department and approved by the commission pursuant to Section 1927.6.

(C) Any annual reports submitted to the commission by the department pursuant to Section 1927.7.

(D) Any recommendations submitted to the commission by the department pursuant to subdivision (a) of Section 1927.8.

(E) The fee adjustments, if any, adopted by the department pursuant to subdivision (b) of Section 1927.8.

(F) An updated status review to be submitted to the commission by the department no later than January 1, 2033, unless the commission directs the department to submit the updated status review sooner.

(d) If the commission determines that listing the western Joshua tree as endangered or threatened pursuant to the California Endangered Species Act is not warranted, this chapter shall remain operative and the authorization of take of a western Joshua tree shall be pursuant to this chapter.

(e) If the commission determines that listing the western Joshua tree as endangered or threatened pursuant to the California Endangered Species Act is warranted, this chapter shall become inoperative and the authorization of take of a western Joshua tree shall only be pursuant to Chapter 1.5 (commencing with Section 2050) of Division 3 or pursuant to the Natural Community Conservation Planning Act (Chapter 10 (commencing with Section 2800) of Division 3).

(f) Upon the approval of a natural community conservation plan that provides for the conservation of the western Joshua tree as a covered species, the authorization of take of a western Joshua tree for any project or activity covered by the plan shall only be pursuant to Chapter 10 (commencing with Section 2800) of Division 3.

(g) The provisions of the Native Plant Protection Act (Chapter 10 (commencing with Section 1900)), and the California Desert Native Plants Act (Division 23 (commencing with Section 80001) of the Food and Agricultural Code), shall not apply to the western Joshua tree.

(h) This section shall not preclude the department from authorizing, by permit or memorandum of understanding, the taking, possession, purchase, or sale within the state of a western Joshua tree to aid the conservation and recovery of the western Joshua tree, or entering into memoranda of understanding with California Native American tribes to provide for the taking and possession of western Joshua trees for tribal cultural purposes, or as otherwise required by applicable law.

(i) Any authorization issued by the department pursuant to Section 2081 or 2084, before the enactment of this chapter, to import, export, take, possess, purchase, or sell a western Joshua tree shall be valid and remain in effect after the enactment of this chapter pursuant to the terms of the authorization.

(Added by Stats. 2023, Ch. 51, Sec. 5. (SB 122) Effective July 10, 2023.)

1927.3. (a) The department may authorize, by permit, the taking of a western Joshua tree if all of the following conditions are met:

(1) The permittee submits to the department for its approval a census of all western Joshua trees on the project site, including size information and photographs, that categorize the western Joshua trees according to the following size classes:

(A) Less than one meter in height.

(B) One meter or greater but less than five meters in height.

(C) Five meters or greater in height.

(2) The permittee avoids and minimizes impacts to, and the taking of, the western Joshua tree to the maximum extent practicable. Minimization may include trimming, encroachment on root systems, relocation, or other actions that result in detrimental but nonlethal impacts to a western Joshua tree.

(3) The permittee mitigates all impacts to, and taking of, the western Joshua tree. The measures required to meet this obligation shall be roughly proportional in extent to the impact of the authorized taking of the species. When various measures are available to meet this obligation, the measures required shall maintain the permittee's objectives to the greatest extent possible. All required measures shall be capable of successful implementation. The permittee shall ensure adequate funding to implement the mitigation measures. In lieu of completing the mitigation obligation on its own, the permittee may elect to satisfy this mitigation obligation by paying fees, pursuant to the fee schedule in subdivision (d) or (e), for deposit into the fund.

(4) (A) The department may include permit conditions that require the permittee to relocate one or more of the western Joshua trees. If relocation is required, the permittee shall implement measures to assist the survival of relocated trees, and to comply with any other reasonable measures required by the department to facilitate the successful relocation and survival of the western Joshua trees. These relocation measures shall include, but are not limited to, all of the following:

(i) A requirement that the relocated western Joshua tree is placed in a location and with proper orientation to improve its survival.

(ii) A requirement that western Joshua trees are relocated at a time that maximizes their survival when feasible.

(iii) A requirement that a desert native plant specialist be onsite to oversee relocation.

(B) The department may limit relocation to certain size classes of trees.

(C) By July 1, 2024, the department shall adopt guidelines and relocation protocols, based on the best available science, to relocate western Joshua trees successfully. The department shall consult with desert

native plant specialists as part of the development of these guidelines and relocation protocols. Chapter 3.5 (commencing with Section 11340) of Part 1 of Division 3 of Title 2 of the Government Code shall not apply to the development, adoption, or amendment of guidelines and relocation protocols pursuant to this subparagraph.

(b) For purposes of this section, each western Joshua tree stem or trunk arising from the ground shall be considered an individual tree requiring mitigation, regardless of its proximity to any other western Joshua tree stem or trunk.

(c) The department may enter into an agreement with any county or city to delegate to the county or city the ability to authorize the taking of a western Joshua tree associated with developing single-family residences, multifamily residences, accessory structures, and public works projects concurrent with its approval of the project, if all of the following conditions are met:

(1) The county or city adopts an ordinance that requires as a condition of any approval or permit issued under the authority of an agreement entered into pursuant to this subdivision satisfaction of the requirements of this chapter.

(2) Except as provided otherwise in this subdivision, the county or city ensures that the permittee satisfies all of the requirements of subdivision (a) of this section.

(3) The project will take no more than 10 individual western Joshua trees on the project site where the project proponent proposes to construct a single-family residence, multifamily residence, or accessory structure, or no more than 40 individual western Joshua trees on the project site on which a public agency proposes to undertake a public works project. Before authorizing the take of more than 20, but no more than 40, individual western Joshua trees for a public works project, the county or city shall obtain the department's written concurrence that the project has avoided and minimized the take of western Joshua trees to the maximum extent practicable.

(4) The county or city shall collect any fees for permits issued and remit them quarterly to the fund as directed by the department.

(5) The county or city entering into an agreement pursuant to this subdivision may impose a reasonable fee to cover the administrative costs of issuing the permit.

(6) (A) The department retains express authority to suspend or revoke the county or city's take authorization in the event the department determines the county or city has violated the terms of the agreement, or this chapter, the county or city fails to implement or enforce the terms of the agreement or this chapter, or the department determines that the local population of western Joshua trees within, or in the vicinity of, that county or city needs further protection. The county or city shall conduct an annual assessment of the status of the local population within the county or city and submit the assessment to the department. The department shall determine if the population needs further protection to provide for the conservation of the species.

(B) The department shall adopt standardized survey and assessment methods for the annual assessment required pursuant to subparagraph (A), including requiring that a desert native plant specialist conduct the assessment. Chapter 3.5 (commencing with Section 11340) of Part 1 of Division 3 of Title 2 of the Government Code shall not apply to the development, adoption, or amendment of standardized survey and assessment methods pursuant to this subparagraph.

(7) The county or city shall be required to submit to the department quarterly reports documenting the number of permits issued, photographs and other evidence demonstrating that take and other impacts were avoided and minimized to the maximum extent practicable, the number and size class of western Joshua trees authorized to be taken, the number of western Joshua trees encroached upon, the number of western Joshua trees lethally removed, the number and location of western Joshua trees relocated, the amount of fees collected, and other information required by the department in the agreement.

(d) Any person or public agency receiving a take authorization pursuant to this chapter for a project that meets the criteria set forth in paragraph (1) may elect, in lieu of satisfying the mitigation obligation provided for in paragraph (3) of subdivision (a), to pay fees in the amounts provided in paragraph (2) for deposit into the fund.

(1) (A) Any project in the area bounded by the intersection of Highway 99 and Highway 58, then east along

Highway 58 to the intersection of Interstate 15, then north along Interstate 15 to the intersection of Highway 247, then south along Highway 247 to the intersection of Highway 18, then west along Highway 18 to the intersection of Highway 138, then west and north along Highway 138 to the intersection of Interstate 5, then north along Interstate 5 to the intersection of Highway 99, then north along Highway 99 to Highway 58.

(B) Any project receiving a permit issued by a county or city pursuant to an agreement with the department pursuant to subdivision (c), regardless of location.

(2) (A) One thousand dollars (\$1,000) for each western Joshua tree five meters or greater in height.

(B) Two hundred dollars (\$200) for each western Joshua tree one meter or greater but less than five meters in height.

(C) One hundred fifty dollars (\$150) for each western Joshua tree less than one meter in height.

(e) Any person or public agency receiving a take authorization pursuant to this chapter for a project that meets the criteria set forth in paragraph (1) may elect, in lieu of satisfying the mitigation obligation provided for in paragraph (3) of subdivision (a), to pay fees in the amounts provided in paragraph (2) for deposit into the fund.

(1) (A) Notwithstanding paragraph (1) of subdivision (d), any project within two miles of Joshua Tree National Park, or any unit of the state park system.

(B) Any project that does not meet the criteria set forth in paragraph (1) of subdivision (d).

(2) (A) Two thousand five hundred dollars (\$2,500) for each western Joshua tree five meters or greater in height.

(B) Five hundred dollars (\$500) for each western Joshua tree one meter or greater but less than five meters in height.

(C) Three hundred forty dollars (\$340) for each western Joshua tree less than one meter in height.

(f) Upon request, the department may authorize a reduction in the amount of the fees prescribed by subdivisions (d) and (e) for any western Joshua tree conserved by a project proponent through the acquisition of compensatory habitat mitigation land otherwise required by law for the project.

(g) (1) The permittee shall bear responsibility for implementing measures to assist the survival of western Joshua trees relocated pursuant to paragraph (4) of subdivision (a).

(2) Unless specifically required by written agreement, a landowner that agrees in writing to allow western Joshua trees to be relocated onto land it owns shall not be liable for the continued survival of the western Joshua trees, shall not be required to manage or maintain the translocated western Joshua trees, and shall not be required to change existing land use practices, provided that the land use practices do not result in the taking, possession, sale, or further translocation of the western Joshua trees.

(Added by Stats. 2023, Ch. 51, Sec. 5. (SB 122) Effective July 10, 2023. Conditionally operative pursuant to Section 1927.2.)

1927.4. (a) The department may issue a permit to authorize either the removal or trimming of dead western Joshua trees or the trimming of live western Joshua trees.

(1) Upon receipt of a permit and payment of any applicable administrative fees, a property owner or its agent may remove a detached dead western Joshua tree or the detached limb of a western Joshua tree. All other removals and all trimming of western Joshua trees authorized by permits issued pursuant to this subdivision shall be completed by a desert native plant specialist.

(2) The department may issue permits pursuant to this section, without payment of fees or other mitigation, provided that the dead western Joshua trees or any limbs to be removed meet one of the following:

(A) Have fallen over and are within 30 feet of a structure.

(B) Are leaning against an existing structure.

(C) Create an imminent threat to public health or safety.

(3) A property owner seeking a permit pursuant to this subdivision shall submit a permit request to the department on a form to be provided by the department that requires the following information:

(A) The name, telephone number, mailing address, and email address of the property owner seeking the permit.

(B) The street address of the property on which the western Joshua trees to be removed or trimmed are located. If no street address is available, the property owner shall include the assessor's parcel number.

(C) Photographs of the western Joshua trees that visually depict the dead trees or the trees to be trimmed and that demonstrate that the western Joshua tree meets one or more of the requirements of paragraph (2).

(D) A signed attestation from the property owner or signed certification by a desert native plant specialist that the tree meets the definition of a dead western Joshua tree.

(4) (A) Within 30 days of receipt of a request for a permit pursuant to subparagraph (A) or (B) of paragraph (2), the department shall either issue a permit allowing for the removal or trimming, or deny the request if the request does not demonstrate a permit can be issued pursuant to this section.

(B) Within 10 days of receipt of a request for a permit pursuant to subparagraph (C) of paragraph (2), the department shall either issue a permit allowing for the removal or trimming, or deny the request if the request does not demonstrate a permit can be issued pursuant to this section.

(C) If the department issues a permit, it shall provide the property owner 60 days in which to complete the removal or trimming. The department may extend this 60-day period in writing at its discretion.

(D) If the department denies the permit request, the property owner may resubmit the request with additional information and photographs. Resubmissions pursuant to this subdivision shall be processed as new permit requests.

(5) Within 30 days of completing the removal or trimming of one or more western Joshua trees in accordance with a permit issued pursuant to this section, the property owner shall submit, by mail or email, photographs of the site at which the western Joshua trees were removed or trimmed pursuant to the permit.

(b) The department may enter into an agreement with any county or city to delegate to the county or city the ability to authorize the removal or trimming of dead western Joshua trees or the trimming of live western Joshua trees, provided that the county or city ensures that all permits issued satisfy the requirements of subdivision (a). The county or city shall be required to submit to the department quarterly reports documenting the number of permits issued, the number and size class of western Joshua trees authorized to be removed or trimmed, and any other information specified in the agreement with the department. A county or city entering into an agreement pursuant to this subdivision may impose a reasonable fee to cover the administrative costs of issuing the permit.

(c) (1) The department retains express authority to suspend or revoke an agreement with any county or city to delegate to the county or city the ability to authorize the removal or trimming of dead western Joshua trees or the trimming of live western Joshua trees in the event the department determines the county or city has violated the terms of the agreement or this chapter, the county or city fails to implement or enforce the terms of the agreement or this chapter, or the local population of western Joshua trees within, or in the vicinity of, that county or city needs further protection. A county or city that has entered into an agreement with the department shall conduct an annual assessment of the status of the local population of western Joshua trees within the county or city and submit the assessment to the department. The department shall determine if the population needs further protection to provide for the conservation of the species.

(2) The department shall adopt standardized survey and assessment methods for the annual assessment required pursuant to paragraph (1), including requiring that a desert native plant specialist conduct the assessment. Chapter 3.5 (commencing with Section 11340) of Part 1 of Division 3 of Title 2 of the Government Code shall not apply to the development, adoption, or amendment of standardized survey and assessment methods pursuant to this paragraph.

(Added by Stats. 2023, Ch. 51, Sec. 5. (SB 122) Effective July 10, 2023. Conditionally operative pursuant to Section 1927.2.)

1927.5. (a) The Western Joshua Tree Mitigation Fund, created by the commission pursuant to Section 749.10 of Title 14 of the California Code of Regulations, is hereby continued in existence by this chapter, and is renamed the Western Joshua Tree Conservation Fund. Notwithstanding Section 13340 of the Government Code, any moneys in the fund are continuously appropriated to the department solely for the purposes of acquiring, conserving, and managing western Joshua tree conservation lands and completing other activities to conserve the western Joshua tree.

(b) All fees remitted to the department pursuant to this chapter shall be deposited into the fund.

(c) The fund may also receive other funding to support the conservation of the western Joshua tree.

(Added by Stats. 2023, Ch. 51, Sec. 5. (SB 122) Effective July 10, 2023. Conditionally operative pursuant to Section 1927.2.)

1927.6. (a) The department shall develop and implement a western Joshua tree conservation plan in collaboration with the commission, governmental agencies, California Native American tribes, and the public. The conservation plan shall incorporate a description of management actions necessary to conserve the western Joshua tree and objective, measurable criteria to assess the effectiveness of such actions. The conservation plan shall also include guidance for the avoidance and minimization of impacts to western Joshua trees and protocols for the successful relocation of western Joshua trees. The department shall present a complete draft conservation plan at a public meeting of the commission, for its review and approval, by December 31, 2024. The commission shall take final action on the conservation plan by June 30, 2025. The department and commission shall, if necessary, periodically update the conservation plan to ensure the conservation of the species.

(b) When developing the conservation plan, the department shall consult with California Native American tribes, include co-management principles in the plan, provide for the relocation of western Joshua trees to tribal lands upon a request from a tribe, and ensure traditional ecological knowledge is incorporated into the plan.

(c) The department, pursuant to Section 1927.5, shall use any fees deposited into the fund for the purpose of addressing threats to the western Joshua tree, including, but not limited to, acquiring, conserving, and managing western Joshua tree conservation lands. Acceptable expenditures from the fund may include, but are not limited to, land acquisition or conservation easement costs, monitoring costs, restoration costs, transaction costs, costs of endowments for land management or easement stewardship consistent with Chapter 4.6 (commencing with Section 65965) of Division 1 of Title 7 of the Government Code and Part 7 (commencing with Section 18501) of Division 9 of the Probate Code, and other reasonable expenditures to implement the conservation plan. The department shall prioritize actions and acquiring and managing lands that are identified as appropriate for western Joshua tree conservation in any department-approved conservation plan, including, but not limited to, the conservation plan required by subdivision (a), a regional conservation assessment, a regional conservation investment strategy, or a conceptual area protection plan.

(d) (1) The department may retain one or more consultants to assist in locating, acquiring, conserving, and managing conservation lands and completing other mitigation actions to implement subdivision (c).

(2) Chapter 1 (commencing with Section 10100) of Part 2 of Division 2 of the Public Contract Code, Chapter 2 (commencing with Section 10290) of Part 2 of Division 2 of the Public Contract Code, Chapter 10 (commencing with Section 4525) of Division 5 of Title 1 of the Government Code, Part 5.5 (commencing with Section 14600) of Division 3 of Title 2 of the Government Code, and Division 13 (commencing with Section 21000) of the Public Resources Code shall not apply to any action by the department to implement subdivision (c).

(Added by Stats. 2023, Ch. 51, Sec. 5. (SB 122) Effective July 10, 2023. Conditionally operative pursuant to Section 1927.2.)

1927.7. (a) Beginning in 2025, by January 31 of each calendar year, the department shall submit an annual report to the commission and the Legislature assessing the conservation status of the western Joshua tree, including, but not limited to, by detailing the number of permits issued, the number and size class of western Joshua trees authorized to be taken, the number of western Joshua trees lethally removed, the number and location of western Joshua trees relocated, the number and location of acres of western Joshua tree woodlands developed, the type, scope, and scale of mitigation measures undertaken by permittees, the number and location of acres of western Joshua tree woodlands conserved, the quality of the acres conserved, the amount of fees paid, the amount of all expenditures from the fund, the projects and actions funded by expenditures from

the fund, the adequacy of the fees to conserve the western Joshua tree, actions taken pursuant to the conservation plan, and other relevant information. The department's annual report shall summarize the information provided by counties and cities pursuant to agreements entered into pursuant to subdivision (c) of Section 1927.3 and subdivision (b) of Section 1927.4.

(b) The report to the Legislature pursuant to subdivision (a) shall be submitted in accordance with Section 9795 of the Government Code.

(Added by Stats. 2023, Ch. 51, Sec. 5. (SB 122) Effective July 10, 2023. Conditionally operative pursuant to Section 1927.2.)

1927.8. (a) Beginning in 2026, and at least every two years thereafter, the commission shall review the status of the western Joshua tree and the effectiveness of the conservation plan in conserving the species at a public meeting to be held prior to August 31. Concurrent with each review conducted pursuant to this section, the department shall make recommendations to the commission, as necessary, for amendments to the conservation plan to ensure the conservation of the western Joshua tree.

(b) The department shall annually adjust the fees provided for in Section 1927.3 pursuant to Section 713. By December 31, 2026, and every three years thereafter, the department shall adopt and subsequently amend regulations pursuant to Section 702 adjusting the fees as necessary to ensure the conservation of the species. The department shall utilize total cost accounting when determining the adequacy of the fees for ensuring conservation of the species, including ensuring sufficient funds for land acquisition or conservation easement costs, monitoring costs, restoration costs, transaction costs, and the amount of endowments for land management or easement stewardship costs consistent with Chapter 4.6 (commencing with Section 65965) of Division 1 of Title 7 of the Government Code and Part 7 (commencing with Section 18501) of Division 9 of the Probate Code.

(Added by Stats. 2023, Ch. 51, Sec. 5. (SB 122) Effective July 10, 2023. Conditionally operative pursuant to Section 1927.2.)

1927.9. No later than January 1, 2033, the department shall submit to the commission an update to the status review previously submitted pursuant to Section 2074.6 for the western Joshua tree that incorporates any new scientific information relevant to the status of the species and includes an evaluation of the impact of the conservation and management efforts pursuant to this chapter. The commission shall consider the updated status review in making its findings pursuant to subdivision (e) of Section 2075.5.

(Added by Stats. 2023, Ch. 51, Sec. 5. (SB 122) Effective July 10, 2023. Conditionally operative pursuant to Section 1927.2.)

1927.10. This chapter is not intended to be construed as, or to be, a general project approval. It shall be the responsibility of each project proponent receiving approval from the department under this chapter to obtain all necessary permits and approvals and to comply with all applicable federal, state, and local laws.

(Added by Stats. 2023, Ch. 51, Sec. 5. (SB 122) Effective July 10, 2023. Conditionally operative pursuant to Section 1927.2.)

1927.11. This chapter does not preclude a county or city from adopting and enforcing ordinances that require as a condition of approving a project more protective measures designed to conserve the western Joshua tree.

(Added by Stats. 2023, Ch. 51, Sec. 5. (SB 122) Effective July 10, 2023. Conditionally operative pursuant to Section 1927.2.)

1927.12. The provisions of this chapter are severable. If any provision of this chapter or its application is held invalid, that invalidity shall not affect other provisions or applications that can be given effect without the invalid provision or application.

(Added by Stats. 2023, Ch. 51, Sec. 5. (SB 122) Effective July 10, 2023. Conditionally operative pursuant to Section 1927.2.)