

Notice of Exemption

To: Office of Planning and Research
1400 Tenth Street, Room 121
Sacramento, CA 95814

Tulare County Clerk
Room 105, Courthouse
221 South Mooney Boulevard
Visalia, California 93291

Lead Agency: Allensworth Community Services District
3336 Road 84
Earlimart, CA 93219

Applicant(s): Allensworth Community Services District
3336 Road 84
Earlimart, CA 93219

phone: (661) 849-3894

email: allensworthcsd@sbcglobal.net

Activity/Project Title: Allensworth Cemetery Project

Activity / Project Location – Specific: Assessor's Parcel No. 333-370-008 (northwest of Road 80 and dedicated/unmaintained Avenue 28), near Allensworth, CA.

Activity / Project Location- Section, Township, Range: N.½ Section 17, Township 24 S., Range 24E., M.D.B&M.

Activity / Project Location – Southwest of the unincorporated community of Allensworth (See Attachment A)

Activity / Project Location - County: Tulare County

Description of Nature, Purpose, and Beneficiaries of Activity / Project: The Allensworth Cemetery Project consists of four (4) components, not necessarily to be completed in this order. (1) Activation of Allensworth Community Services District's (CSD) latent cemetery and interment powers as described in California Health and Safety Code 61100 (ab); (2) Annexation and a sphere of influence boundary adjustment of Allensworth CSD to include the Allensworth Cemetery site (APN 333-370-008); (3) Transfer of ownership from a third-party to Allensworth CSD (such that Allensworth CSD is the owner of the land after the transfer); and (4) Minor improvements to the site and historical preservation of the site, including but not limited to landscaping and landscaping irrigation system, fencing, lighting, site accessibility measures including an access road/path on the parcel, and headstone and sign restoration. The nearby community of Allensworth, descendants of pioneers/settlers of Allensworth, and Tulare County in general would benefit in preserving the historic portion of the Allensworth Cemetery.

Exempt Status:

Ministerial (PRC Sections 21080(b)(1); 15268);

Declared Emergency (PRC Sections 21080(b)(3);15269(a));

Emergency Project (PRC Sections 21080(b)(4);15269(b)(c));

Categorical Exemptions: Sections 15301 Existing Facilities; 15303; New Construction or Conversion of Small Structures; 15319 Annexation of Existing Facilities and Lots for Exempt Facilities and; 15325 (e) Transfer of Ownership of Interest in Land to Preserve Natural Conditions and Historical Resources (14 Cal. Code Regs.)

Statutory Exemptions: N/A.

FILED
TULARE COUNTY


AUG 24 2020

ROLAND P. HILL
ASSESSOR/CLERK RECORDER
BY:

Date Filed by Tulare County Clerk

Reasons Why Activity/Project are Exempt from CEQA: As noted above, the project would consist of four components in order to restore, preserve, and develop historic Allensworth Cemetery: (1) activation of Allensworth CSD's latent cemetery and interment powers; (2) annexation and a sphere of influence boundary adjustment of Allensworth CSD to include the Allensworth Cemetery site; (3) transfer of ownership from a third-party to Allensworth CSD; and (4) minor improvements to the site and historical preservation of the site, (including, but not limited to, landscaping and landscaping irrigation system, fencing, lighting, site accessibility, and headstone and sign restoration). As such, the use of sections 15301, 15303, 15319, and 15325 (14 Cal. Code Regs.) is appropriate and applicable; therefore, the project is exempt from the California Environmental Quality Act.

Name of Public Agency Approving Activity / Project: Allensworth Community Services District
Activity/Project Representative: Sherry Hunter, President Telephone: (661) 849-3894

Signature:  Date: 8-18-2020 Title: President, Board of Directors
Sherry Hunter Allensworth Community Services District

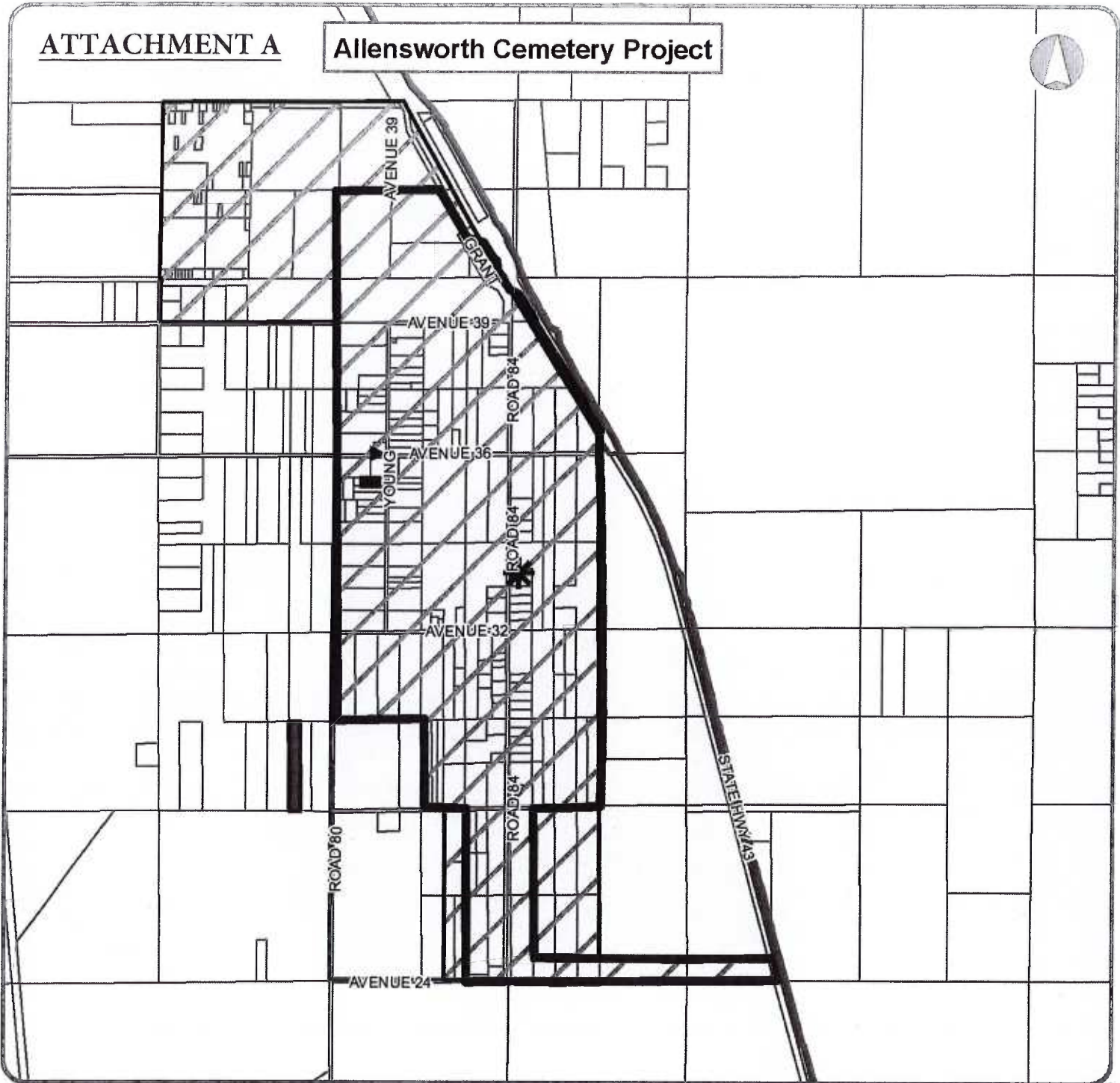
Signed by Lead Agency

Date received for filing at OPR:

Governor's Office of Planning & Research

Aug 27 2020

STATE CLEARINGHOUSE



Legend

- Project Site
- Allensworth CSD
- Sphere of Influence
- Allensworth HDB
- Parcels
- District Office

