

PUBLIC NOTICE



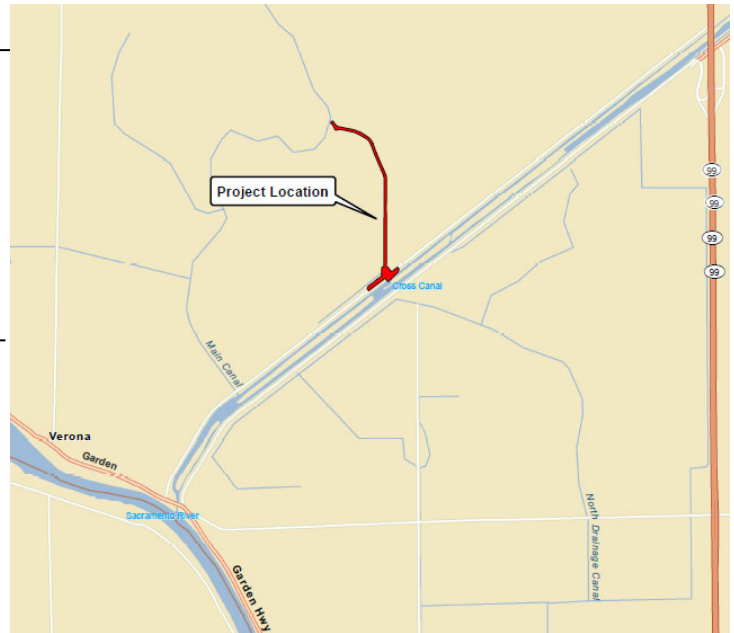
Notice of Availability of Initial Study, Notice of Intent to Adopt a Mitigated Negative Declaration, for the Reclamation District 1001 Auxiliary Drainage Pump Station Project

WHAT IS BEING PLANNED?

Reclamation District 1001 proposes to construct a new auxiliary drainage pump station located along the Natomas Cross Canal North Levee at the south end of the RD 1001 Lateral 4 Channel. The project is located approximately 1.5 miles northeast of the Sacramento River, and 2 miles west of State Route 99 in Sutter County.

WHY THIS PUBLIC NOTICE?

Reclamation District 1001 has studied the effects this project may have on the environment. The studies show it will not significantly affect the quality of the environment. The report that explains the findings of the studies is the Initial Study with proposed Mitigated Negative Declaration for this project. This notice is to advise you that the preparation of this report has been completed and is available for you to review.



WHAT'S AVAILABLE?

An Initial Study with proposed Mitigated Negative Declaration has been prepared for the proposed project and is available for public review beginning September 9 through October 8, 2020. During the public review period, a copy of the draft Mitigated Negative Declaration and all supporting documents will be available at: Reclamation District 1001; 1959 Cornelius Avenue, Rio Oso, CA 95674. In addition, a copy of the proposed Mitigated Negative Declaration will be available online at <http://www.rd1001.org/>.

WHERE DO YOU COME IN?

Do you have any comments about the Initial Study and processing the project with a Mitigated Negative Declaration? Do you disagree with the findings of the study as set forth in the proposed Mitigated Negative Declaration? Would you care to make any other comments on the project? Please submit your comments in writing no later than October 8, 2020 to Reclamation District 1001, ATTN: Kimberly Reese, 1959 Cornelius Avenue, Rio Oso, CA 95674. You can also submit your comments via e-mail to kreese@rd1001.org.

The period Reclamation District 1001 will be accepting comments is from September 9, 2020 to October 8, 2020. Pending review of all public comments, the Reclamation District Board will consider a decision to adopt the Mitigated Negative Declaration and, if so approved, direct staff to proceed with the Final Design of the proposed project.

CONTACT

For more information, or to receive a copy of the draft Initial Study, please contact Kimberly Reese at 1959 Cornelius Avenue, Rio Oso, CA 95674 or by phone at (530) 656-2318.