

January 22, 2021

Tina Andersen  
Principal  
T&B Planning Inc.  
3200 El Camino Real, Suite 100  
Irvine, California 92602

**VIA EMAIL**  
**TAndersen@tbplanning.com**

Subject: Tree Inventory Report for the Bridge Point Rancho Cucamonga Project at 12434 4<sup>th</sup> Street, Rancho Cucamonga, California

Dear Ms. Andersen:

Psomas is pleased to provide the following tree inventory report for the Bridge Point Rancho Cucamonga Project site located at 12434 4<sup>th</sup> Street in Rancho Cucamonga, California. The survey area for this tree inventory consists of the Project site (Assessor's Parcel Numbers 022-928-350 and 022-928-351) as well as the area surrounding a potential at-grade railroad crossing at 6<sup>th</sup> Street, located approximately 300 feet northwest of the Project site (Exhibits 1 and 2).

The Project site is bound by 6<sup>th</sup> Street to the north, a water treatment plant and detention center to the east, 4<sup>th</sup> Street to the south, and commercial buildings with associated parking areas to the west. Psomas Certified Arborist Trevor Bristle visited the Project site on April 17 and 20, 2020 to document the type, quantity, and condition of heritage trees. A follow-up survey was conducted on November 11, 2020 to document non-heritage trees on the Project site and all trees at the at-grade railroad crossing site. Each tree was assigned a unique number and the following data were recorded: tree species, number of trunks, trunk diameter at breast height (dbh), tree height, canopy diameter, and qualitative assessment ratings on aesthetics and health. Health and aesthetic qualities of the trees were rated as follows: 5=excellent, 4=good, 3=fair, 2=poor, and 1=very poor.

### **REGULATORY AUTHORITY**

Trees in the City of Rancho Cucamonga are regulated by the Development Code (Chapter 17.16.080 of the Rancho Cucamonga Municipal Code). A tree removal permit is required prior to removing any "heritage tree", which is defined as:

- 1) All eucalyptus windrows;
- 2) Any tree greater than 30 feet tall with a minimum trunk diameter of 20 inches;
- 3) Any multi-trunk tree whose combined trunk diameter is at least 30 inches;
- 4) A stand of trees the nature of which makes each dependent upon the others for survival;
- 5) Any tree determined to be historically or culturally significant.

5 Hutton Centre Drive  
Suite 300  
Santa Ana, CA 92707

Tel 714.751.7373  
Fax 714.545.8883  
[www.Psomas.com](http://www.Psomas.com)

Tina Andersen  
January 22, 2021  
Page 2

## EXISTING CONDITIONS

The Project site currently contains two structures including a large warehouse with adjacent truck lots and small office complex with adjacent parking area. A former vineyard is present in the northern portion of the site, south of 6<sup>th</sup> Street.

Tree species that occur on the Project site include: tree-of-heaven (*Ailanthus altissima*), white alder (*Alnus rhombifolia*), silk floss tree (*Ceiba speciosa*), carrotwood (*Cupaniopsis anacardioides*), red ironbark (*Eucalyptus sideroxylon*), shamel ash (*Fraxinus uhdei*), sweet gum (*Liquidambar styraciflua*), white mulberry (*Morus alba*), Canary Island pine (*Pinus canariensis*), Italian stone pine (*Pinus pinea*), western sycamore (*Platanus racemosa*), black willow (*Salix gooddingii*), arroyo willow (*Salix lasiolepis*), Peruvian peppertree (*Schinus molle*), Brazilian peppertree (*Schinus terebinthifolius*), African sumac (*Searsia lancea*), Chinese elm (*Ulmus parviflora*), and Mexican fan palm (*Washingtonia robusta*). Generally, trees are scattered along the boundaries of buildings, roads and parking areas throughout the Project site.

Tree species that occur in the vicinity of the railroad crossing site include jacaranda (*Jacaranda mimosifolia*), goldenrain tree (*Koelreuteria paniculata*), southern magnolia (*Magnolia grandiflora*), and Peruvian peppertree.

## RESULTS

The field survey identified a total of 125 trees on the Project site that meet the minimum requirements for inclusion as a heritage tree with an additional 464 non-heritage trees. The locations of all heritage trees on the Project site are presented in Exhibit 3, while the locations of trees that are too small to be considered heritage trees are indicated by polygons.

Trees in the vicinity of the railroad crossing site include 1 heritage tree, a Peruvian peppertree, along with 11 other non-heritage trees. Trees that are near the railroad crossing site are shown on Exhibit 4.

A summary of all trees on the Project site and the railroad crossing site is provided in Table 1. All collected tree data are included in Attachment A.

Impacts to trees on the Project site and the railroad crossing site will be determined based on final project design.

**TABLE 1  
 SUMMARY OF ON-SITE TREES**

Tree Species	Quantity		
	Heritage Trees <sup>1</sup>	Non-Heritage Trees	Total
<b>Trees on the Project Site</b>			
tree-of-heaven <i>Ailanthus altissima</i>	0	1	1
white alder <sup>2</sup> <i>Alnus rhombifolia</i>	2	2	4
silk floss tree <i>Ceiba speciosa</i>	9	18	27
carrotwood <i>Cupianopsis anacardiodes</i>	0	58	58
red ironbark <i>Eucalyptus sideroxylon</i>	51	25	76
shamel ash <i>Fraxinus uhdei</i>	0	3	3
sweet gum <i>Liquidambar styraciflua</i>	6	38	44
white mulberry <i>Morus alba</i>	0	4	4
Canary Island pine <i>Pinus canariensis</i>	6	56	62
Italian stone pine <i>Pinus pinea</i>	5	1	6
western sycamore <sup>2</sup> <i>Platanus racemosa</i>	33	110	143
black willow <sup>2</sup> <i>Salix gooddingii</i>	0	1	1
arroyo willow <sup>2</sup> <i>Salix lasiolepis</i>	0	4	4
Peruvian peppertree <i>Schinus molle</i>	13	53	66
Brazilian peppertree <i>Schinus terebinthifolius</i>	0	65	65
African sumac <i>Searsia lancea</i>	0	19	19
Chinese elm <i>Ulmus parviflora</i>	0	2	2
Mexican fan palm <i>Washingtonia robusta</i>	0	4	4
<b>Project Site Trees Subtotal</b>	<b>125</b>	<b>464</b>	<b>589</b>
<b>Trees Near Railroad Crossing Site</b>			
jacaranda <i>Jacaranda mimosifolia</i>	0	1	1
goldenrain tree <i>Koelreuteria paniculata</i>	0	1	1
southern magnolia <i>Magnolia grandiflora</i>	0	6	6

**TABLE 1  
 SUMMARY OF ON-SITE TREES**

Tree Species	Quantity		
	Heritage Trees <sup>1</sup>	Non-Heritage Trees	Total
Peruvian peppertree <i>Schinus molle</i>	1	3	4
<b>Railroad Crossing Trees Subtotal</b>	<b>1</b>	<b>11</b>	<b>12</b>
<b>GRAND TOTAL</b>	<b>126</b>	<b>475</b>	<b>601</b>
<sup>1</sup> For the Project site, heritage trees consist of single trunk trees with a diameter at breast height of at least 20 inches, or multi-trunk trees whose trunks are at least 30 inches diameter at breast height cumulatively. <sup>2</sup> Native tree species.			

**DISCUSSION**

The trees on the Project site are generally in good health with no conspicuous signs of decay (e.g., trunk cavities, bleeding sap, broken limbs, or fungi). Trees were consistently maintained within the past year, prior to closing of the site. Evaluation of these trees was based on a visual assessment from the ground.

Eucalyptus trees that occur as part of a windrow are the most common heritage tree and consist of red ironbark trees located to the north and west of the large warehouse facility. Eucalyptus windrows are comprised of planted, mature individuals that are greater than nine inches in trunk diameter. Additional volunteer eucalyptus saplings are interspersed throughout these windrows. These saplings are less than five inches in trunk diameter and were not documented as they are not considered to be part of the original windrow.

Western sycamores comprise the second most common heritage tree species and are concentrated mainly along the northeast and southeast portions of the Project site. The sycamores are all mature specimens with evidence of anthracnose and minor leaf and limb dieback. While the anthracnose has only a minor negative effect on the health of these trees, it has resulted in a moderate decline of their aesthetics.

The remaining heritage tree species on the Project site consist of white alder, silk floss tree, sweet gum, Canary Island pine, Italian stone pine, and Peruvian peppertree. Nearly all these trees were rated as having good health. These trees are scattered to the north and south of the large warehouse complex. Notably, two white alders are located in the southwest corner of the site. This species is water-loving and require more care in a landscaped environment. With no ongoing maintenance, the health and aesthetics of these trees are likely to decline.

Other tree species on the Project site that did not qualify as heritage trees are mainly located within the parking lot areas and along their borders. Most of these trees are either carrotwood or Brazilian peppertrees. An employee picnic area to the north of the warehouse has a surrounding garden containing Mexican fan palm, white mulberry, and shamel ash trees.

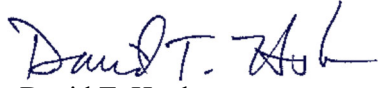
Many of the trees on the Project site are planted near pavement, structures, or within basins that likely have limited root development. Minor damage and upheaval are expected to occur as the roots continue to develop. Stress in the form of reflected heat from nearby structures and pavement is expected to affect trees on the Project site.

Tina Andersen  
January 22, 2021  
Page 5

Please call Trevor Bristle at (626) 351-2000 with any questions related to this report.

Sincerely,

**P S O M A S**

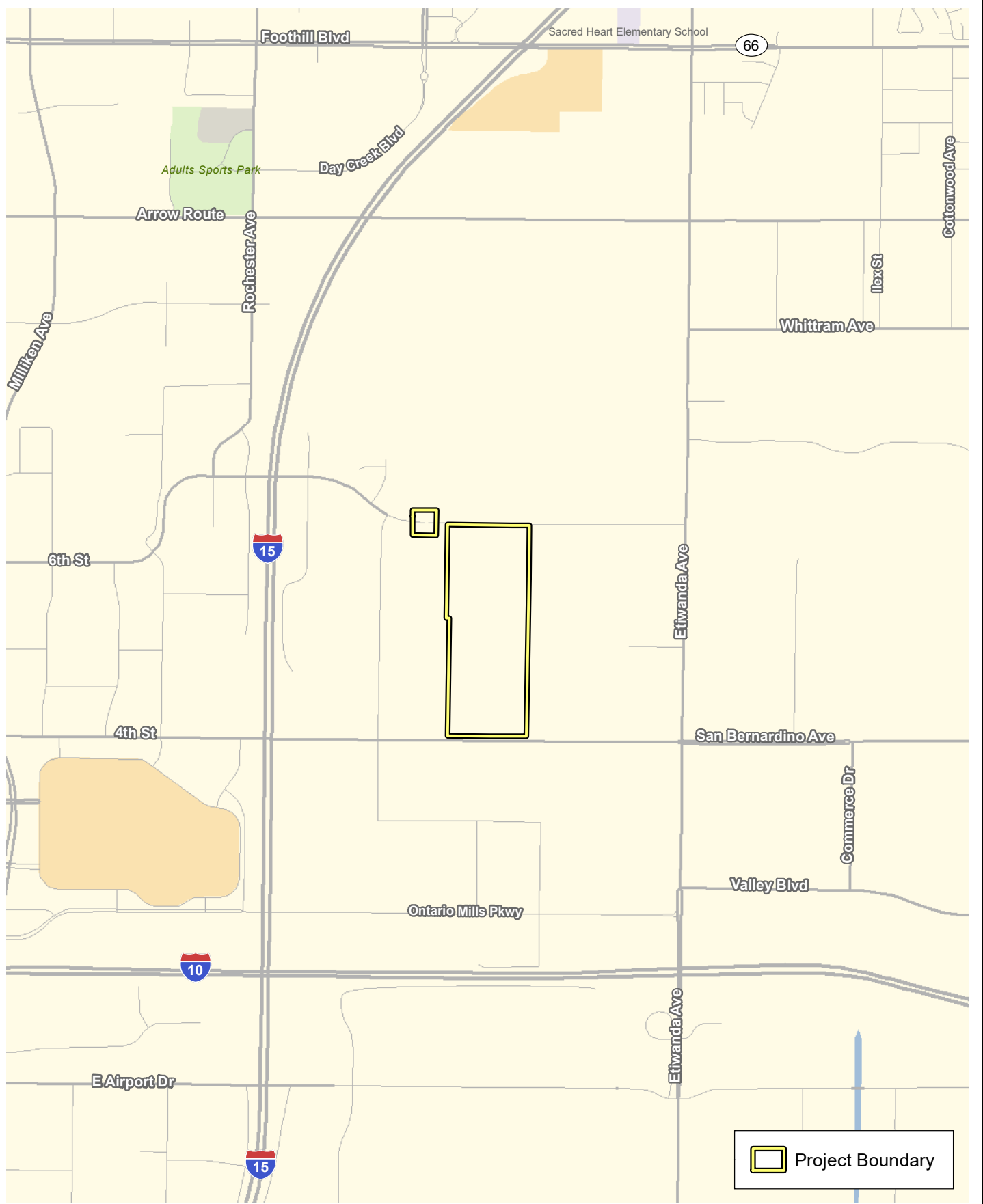


David T. Hughes  
Senior Project Manager



Trevor Bristle  
Certified Arborist  
International Society of Arboriculture  
Certificate No. WE-10233A

Enclosures: Exhibits 1 through 4  
Attachment A –Tree Data Summary

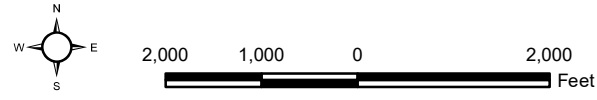


D:\Projects\3TBP\0100\MXD\Treelex\_LV\_20201113.mxd

### Local Vicinity

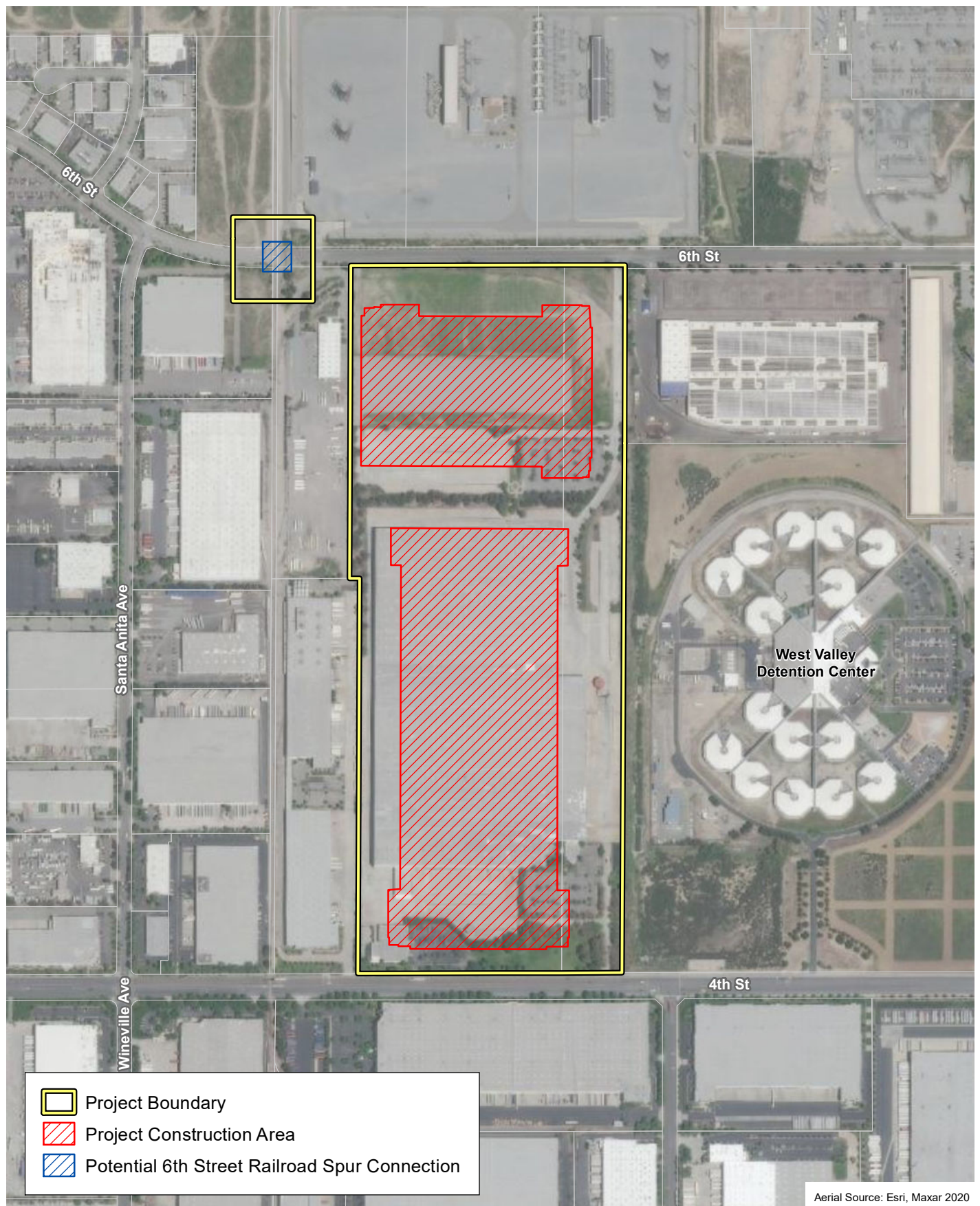
Bridge Point Rancho Cucamonga Project, 12434 4th Street, Rancho Cucamonga, California

### Exhibit 1



(Rev: 11/16/2020 RMB) R:\Projects\3TBP\0100\Graphics\Treelex\_LV.pdf

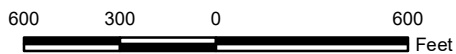
D:\Projects\3\TBP010100\MXD\Treelex\_Project\_Areas\_20201113.mxd



## Project Areas

*Bridge Point Rancho Cucamonga Project, 12434 4th Street, Rancho Cucamonga, California*

## Exhibit 2

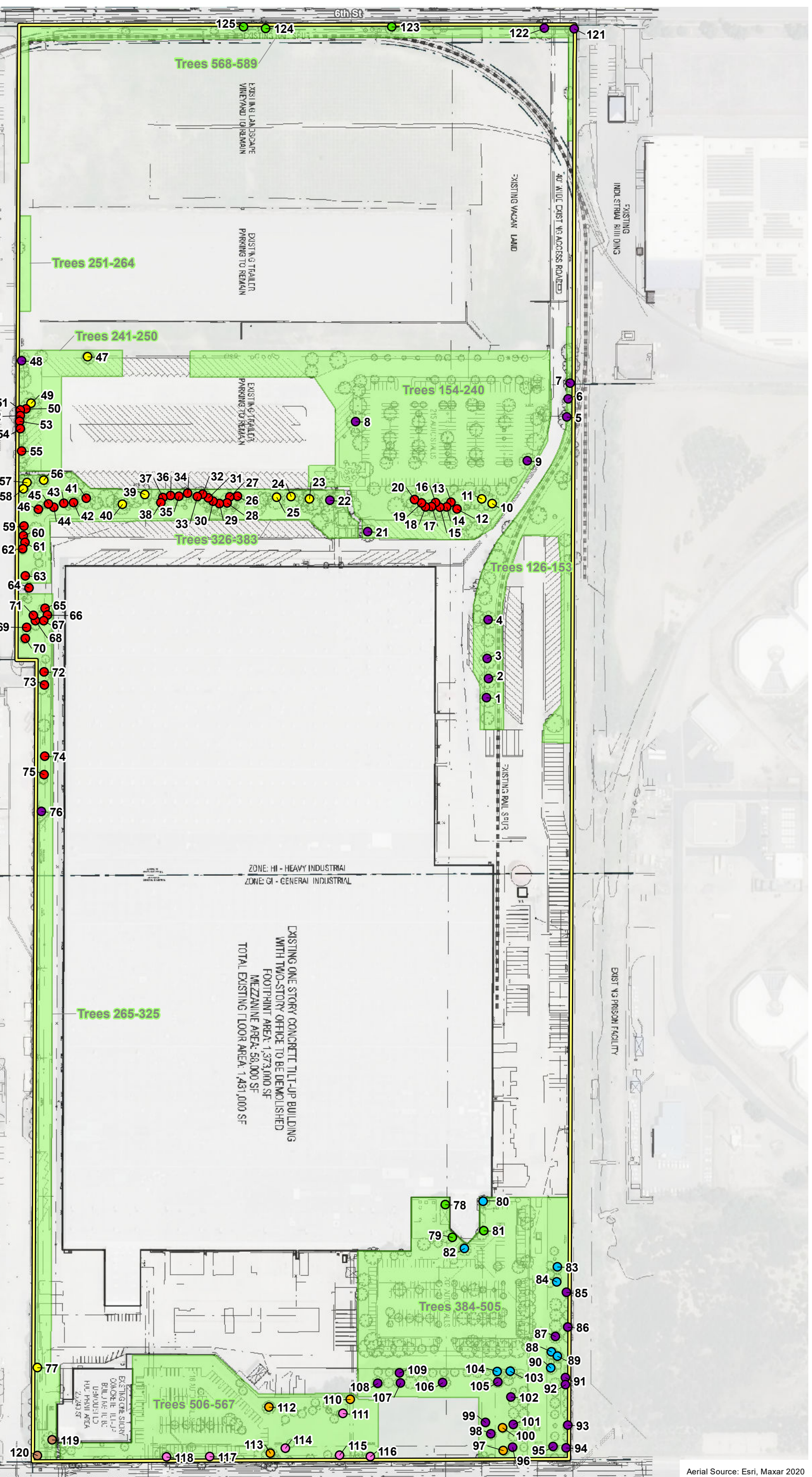


Project Boundary

### Tree Types

- Canary Island pine
- Italian stone pine
- Peruvian peppertree
- red ironbark
- silk floss tree
- sweet gum
- western sycamore
- white alder

Note: Individually numbered trees meet the definition of a heritage tree. Locations for trees 126 through 589 are denoted by polygons and are below the size threshold to be considered heritage trees.

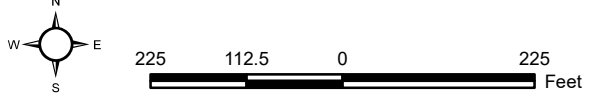


Aerial Source: Esri, Maxar 2020

## Heritage Tree Locations

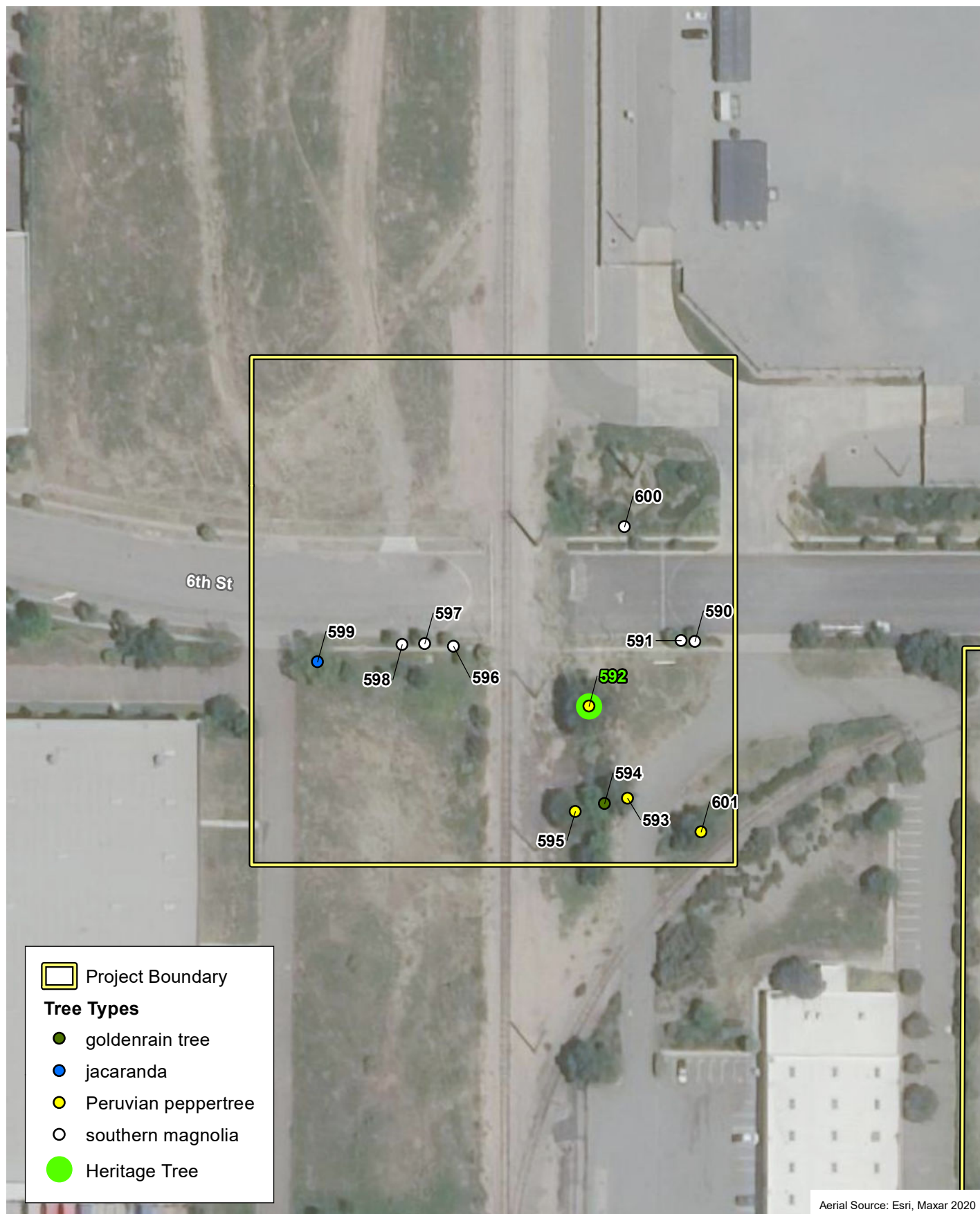
Bridge Point Rancho Cucamonga Project, 12434 4th Street, Rancho Cucamonga, California


## Exhibit 3








D:\Projects\3TBP\010100\MXD\Trees\lex\_Heritage\_TreeLocations\_20201130.mxd





 Project Boundary

**Tree Types**

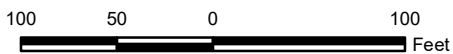
-  goldenrain tree
-  jacaranda
-  Peruvian peppertree
-  southern magnolia
-  Heritage Tree

Aerial Source: Esri, Maxar 2020

### Tree Locations – Railroad Spur Connection

### Exhibit 4

Bridge Point Rancho Cucamonga Project, 12434 4th Street, Rancho Cucamonga, California



**ATTACHMENT A**  
**TREE DATA SUMMARY**

TREE DATA SUMMARY

Tree Number	Common Name	Species	# Main Trunks	DBH (in)	Height (ft)	Canopy Diameter (ft)	Health Rating	Aesthetic Rating	Location		Tree Type		Notes
									Project Site	Railroad Crossing	Heritage Tree	Non-Heritage	
1	western sycamore	<i>Platanus racemosa</i>	1	20.1	45	35	4	4	X		X		
2	western sycamore	<i>Platanus racemosa</i>	1	21.8	40	30	4	3	X		X		
3	western sycamore	<i>Platanus racemosa</i>	1	20.5	35	25	3	3	X		X		
4	western sycamore	<i>Platanus racemosa</i>	1	21.1	40	30	4	3	X		X		
5	western sycamore	<i>Platanus racemosa</i>	1	21.8	40	35	4	4	X		X		
6	western sycamore	<i>Platanus racemosa</i>	1	20.0	40	30	4	4	X		X		
7	western sycamore	<i>Platanus racemosa</i>	1	20.1	35	30	4	4	X		X		
8	western sycamore	<i>Platanus racemosa</i>	1	26.0	30	35	4	4	X		X		
9	western sycamore	<i>Platanus racemosa</i>	1	20.9	40	35	4	4	X		X		
10	Peruvian pepper tree	<i>Schinus molle</i>	4	18.4, 8.0, 4.0, 4.0	25	30	4	4	X		X		
11	Peruvian pepper tree	<i>Schinus molle</i>	1	20.0	25	25	4	4	X		X		
12	red ironbark	<i>Eucalyptus sideroxylon</i>	1	18.1	30	25	4	4	X		X		
13	red ironbark	<i>Eucalyptus sideroxylon</i>	2	13.3, 3.0	25	25	4	4	X		X		
14	red ironbark	<i>Eucalyptus sideroxylon</i>	1	16.9	30	25	4	4	X		X		
15	red ironbark	<i>Eucalyptus sideroxylon</i>	1	13.9	30	25	4	4	X		X		
16	red ironbark	<i>Eucalyptus sideroxylon</i>	1	13.3	30	20	4	4	X		X		
17	red ironbark	<i>Eucalyptus sideroxylon</i>	1	19.2	35	25	4	4	X		X		
18	red ironbark	<i>Eucalyptus sideroxylon</i>	1	18.2	30	25	4	4	X		X		
19	red ironbark	<i>Eucalyptus sideroxylon</i>	1	19.3	30	30	4	4	X		X		
20	red ironbark	<i>Eucalyptus sideroxylon</i>	1	17.2	30	30	4	4	X		X		
21	western sycamore	<i>Platanus racemosa</i>	1	22.2	40	35	4	4	X		X		
22	western sycamore	<i>Platanus racemosa</i>	1	20.9	45	35	4	4	X		X		
23	Peruvian pepper tree	<i>Schinus molle</i>	1	25.3	30	35	4	4	X		X		
24	Peruvian pepper tree	<i>Schinus molle</i>	1	21.5	30	25	4	4	X		X		
25	Peruvian pepper tree	<i>Schinus molle</i>	1	21.2	30	35	4	3	X		X		
26	red ironbark	<i>Eucalyptus sideroxylon</i>	3	7.2, 6.5, 5.5	20	20	4	4	X		X		
27	red ironbark	<i>Eucalyptus sideroxylon</i>	1	24.7	35	35	4	4	X		X		
28	red ironbark	<i>Eucalyptus sideroxylon</i>	2	19.5, 2.3	45	35	4	4	X		X		
29	red ironbark	<i>Eucalyptus sideroxylon</i>	1	20.1	35	25	4	4	X		X		
30	red ironbark	<i>Eucalyptus sideroxylon</i>	1	16.8	35	25	4	4	X		X		
31	red ironbark	<i>Eucalyptus sideroxylon</i>	1	12.5	30	20	4	4	X		X		
32	red ironbark	<i>Eucalyptus sideroxylon</i>	1	25.6	45	35	4	4	X		X		
33	red ironbark	<i>Eucalyptus sideroxylon</i>	1	13.8	30	20	4	4	X		X		
34	red ironbark	<i>Eucalyptus sideroxylon</i>	1	19.3	40	35	4	4	X		X		
35	red ironbark	<i>Eucalyptus sideroxylon</i>	1	22.1	50	35	4	4	X		X		
36	red ironbark	<i>Eucalyptus sideroxylon</i>	1	24.9	45	35	4	4	X		X		
37	red ironbark	<i>Eucalyptus sideroxylon</i>	1	19.7	35	30	4	4	X		X		
38	red ironbark	<i>Eucalyptus sideroxylon</i>	1	15.5	30	20	4	4	X		X		
39	Peruvian pepper tree	<i>Schinus molle</i>	1	24.6	35	35	4	4	X		X		
40	Peruvian pepper tree	<i>Schinus molle</i>	2	18.6, 12.5	20	30	4	4	X		X		
41	red ironbark	<i>Eucalyptus sideroxylon</i>	1	22.1	35	30	4	4	X		X		
42	red ironbark	<i>Eucalyptus sideroxylon</i>	1	16.3	25	15	4	4	X		X		
43	red ironbark	<i>Eucalyptus sideroxylon</i>	1	13.9	25	10	3	3	X		X		

## TREE DATA SUMMARY

Tree Number	Common Name	Species	# Main Trunks	DBH (in)	Height (ft)	Canopy Diameter (ft)	Health Rating	Aesthetic Rating	Location		Tree Type		Notes
									Project Site	Railroad Crossing	Heritage Tree	Non-Heritage	
44	red ironbark	<i>Eucalyptus sideroxylon</i>	1	15.8	25	20	4	4	X		X		
45	red ironbark	<i>Eucalyptus sideroxylon</i>	1	18.2	30	30	4	4	X		X		
46	red ironbark	<i>Eucalyptus sideroxylon</i>	1	20.2	30	25	4	4	X		X		
47	Peruvian pepper tree	<i>Schinus molle</i>	3	19.2, 8.7, 6.0	25	30	4	3	X		X		pushing over light pole
48	western sycamore	<i>Platanus racemosa</i>	1	22.3	30	35	4	4	X		X		
49	Peruvian pepper tree	<i>Schinus molle</i>	1	24.4	30	30	4	4	X		X		
50	red ironbark	<i>Eucalyptus sideroxylon</i>	1	20.0	40	30	4	4	X		X		
51	red ironbark	<i>Eucalyptus sideroxylon</i>	1	23.2	40	25	4	4	X		X		
52	red ironbark	<i>Eucalyptus sideroxylon</i>	1	14.3	25	10	2	3	X		X		
53	red ironbark	<i>Eucalyptus sideroxylon</i>	1	20.6	40	30	4	4	X		X		
54	red ironbark	<i>Eucalyptus sideroxylon</i>	1	16.4	25	20	4	4	X		X		
55	red ironbark	<i>Eucalyptus sideroxylon</i>	1	22.9	40	30	4	4	X		X		
56	Peruvian pepper tree	<i>Schinus molle</i>	1	20.5	30	25	4	3	X		X		
57	Peruvian pepper tree	<i>Schinus molle</i>	1	22.8	35	30	4	4	X		X		
58	Peruvian pepper tree	<i>Schinus molle</i>	1	21.6	30	30	4	4	X		X		
59	red ironbark	<i>Eucalyptus sideroxylon</i>	1	19.7	25	20	4	4	X		X		
60	red ironbark	<i>Eucalyptus sideroxylon</i>	1	20.3	35	20	4	4	X		X		
61	red ironbark	<i>Eucalyptus sideroxylon</i>	1	26.6	35	35	4	4	X		X		
62	red ironbark	<i>Eucalyptus sideroxylon</i>	1	18.0	30	30	4	4	X		X		
63	red ironbark	<i>Eucalyptus sideroxylon</i>	1	24.4	35	40	4	4	X		X		
64	red ironbark	<i>Eucalyptus sideroxylon</i>	1	17.3	30	20	4	4	X		X		
65	red ironbark	<i>Eucalyptus sideroxylon</i>	1	14.9	20	20	4	4	X		X		
66	red ironbark	<i>Eucalyptus sideroxylon</i>	1	19.3	30	30	4	4	X		X		
67	red ironbark	<i>Eucalyptus sideroxylon</i>	1	9.1	20	15	4	4	X		X		
68	red ironbark	<i>Eucalyptus sideroxylon</i>	2	19.7, 2.3	40	30	4	4	X		X		
69	red ironbark	<i>Eucalyptus sideroxylon</i>	3	7.4, 7.3, 7.0	25	20	4	4	X		X		
70	red ironbark	<i>Eucalyptus sideroxylon</i>	2	23.4, 5.9	40	30	4	3	X		X		
71	red ironbark	<i>Eucalyptus sideroxylon</i>	1	9.9	10	5	1	1	X		X		
72	red ironbark	<i>Eucalyptus sideroxylon</i>	1	26.3	30	30	4	4	X		X		
73	red ironbark	<i>Eucalyptus sideroxylon</i>	3	22.0, 6.7, 2.0	30	35	4	4	X		X		
74	red ironbark	<i>Eucalyptus sideroxylon</i>	1	23.3	40	35	4	3	X		X		limb failure
75	red ironbark	<i>Eucalyptus sideroxylon</i>	1	11.1	20	20	4	4	X		X		
76	western sycamore	<i>Platanus racemosa</i>	1	23.8	40	35	4	4	X		X		
77	Peruvian pepper tree	<i>Schinus molle</i>	3	14.5, 9.8, 8.8	20	25	4	3	X		X		
78	Canary Island pine	<i>Pinus canariensis</i>	1	21.7	40	25	4	4	X		X		courtyard
79	Canary Island pine	<i>Pinus canariensis</i>	1	21.2	45	25	4	4	X		X		
80	silk floss tree	<i>Ceiba speciosa</i>	1	21.5	30	25	4	4	X		X		
81	Canary Island pine	<i>Pinus canariensis</i>	1	20.4	45	20	4	4	X		X		
82	silk floss tree	<i>Ceiba speciosa</i>	1	20.3	35	30	4	4	X		X		
83	silk floss tree	<i>Ceiba speciosa</i>	1	21.3	30	20	4	4	X		X		
84	silk floss tree	<i>Ceiba speciosa</i>	1	26.3	35	25	4	4	X		X		
85	western sycamore	<i>Platanus racemosa</i>	1	26.5	45	35	3	3	X		X		limb failure
86	western sycamore	<i>Platanus racemosa</i>	1	21.6	40	30	4	4	X		X		

## TREE DATA SUMMARY

Tree Number	Common Name	Species	# Main Trunks	DBH (in)	Height (ft)	Canopy Diameter (ft)	Health Rating	Aesthetic Rating	Location		Tree Type		Notes
									Project Site	Railroad Crossing	Heritage Tree	Non-Heritage	
87	western sycamore	<i>Platanus racemosa</i>	1	20.0	45	35	4	3	X		X		
88	silk floss tree	<i>Ceiba speciosa</i>	1	22.0	35	30	4	4	X		X		
89	silk floss tree	<i>Ceiba speciosa</i>	1	22.6	35	30	4	4	X		X		
90	silk floss tree	<i>Ceiba speciosa</i>	1	25.1	35	35	4	4	X		X		
91	western sycamore	<i>Platanus racemosa</i>	1	21.8	40	35	3	3	X		X		
92	western sycamore	<i>Platanus racemosa</i>	1	20.4	40	30	4	3	X		X		
93	western sycamore	<i>Platanus racemosa</i>	1	20.8	45	30	4	3	X		X		
94	western sycamore	<i>Platanus racemosa</i>	1	20.0	35	25	4	3	X		X		
95	western sycamore	<i>Platanus racemosa</i>	1	20.2	40	30	4	3	X		X		
96	western sycamore	<i>Platanus racemosa</i>	1	22.2	45	25	4	4	X		X		
97	Italian stone pine	<i>Pinus pinea</i>	1	24.2	45	25	4	4	X		X		
98	western sycamore	<i>Platanus racemosa</i>	1	24.3	50	30	4	4	X		X		
99	western sycamore	<i>Platanus racemosa</i>	1	25.2	50	35	4	4	X		X		
100	Italian stone pine	<i>Pinus pinea</i>	1	22.5	50	30	4	4	X		X		
101	western sycamore	<i>Platanus racemosa</i>	1	21.9	50	25	4	3	X		X		
102	western sycamore	<i>Platanus racemosa</i>	1	21.0	50	35	4	3	X		X		
103	silk floss tree	<i>Ceiba speciosa</i>	1	23.6	35	30	4	4	X		X		
104	silk floss tree	<i>Ceiba speciosa</i>	1	23.2	35	30	4	4	X		X		
105	western sycamore	<i>Platanus racemosa</i>	1	20.3	40	35	4	3	X		X		
106	western sycamore	<i>Platanus racemosa</i>	1	24.6	35	40	4	3	X		X		
107	western sycamore	<i>Platanus racemosa</i>	1	25.6	45	35	4	4	X		X		
108	western sycamore	<i>Platanus racemosa</i>	1	27.8	45	35	4	4	X		X		
109	western sycamore	<i>Platanus racemosa</i>	1	23.6	45	25	3	3	X		X		limb failure
110	Italian stone pine	<i>Pinus pinea</i>	1	40.4	50	40	4	4	X		X		
111	sweet gum	<i>Liquidambar styraciflua</i>	1	24.0	45	30	4	4	X		X		
112	Italian stone pine	<i>Pinus pinea</i>	1	30.8	50	35	4	4	X		X		
113	Italian stone pine	<i>Pinus pinea</i>	1	29.5	45	35	4	4	X		X		
114	sweet gum	<i>Liquidambar styraciflua</i>	1	20.5	35	15	4	4	X		X		
115	sweet gum	<i>Liquidambar styraciflua</i>	1	23.3	40	25	4	4	X		X		
116	sweet gum	<i>Liquidambar styraciflua</i>	1	20.6	35	25	4	4	X		X		
117	sweet gum	<i>Liquidambar styraciflua</i>	1	22.0	40	15	3	2	X		X		
118	sweet gum	<i>Liquidambar styraciflua</i>	1	22.0	40	25	4	4	X		X		
119	white alder	<i>Alnus rhombifolia</i>	1	26.7	40	35	3	2	X		X		
120	white alder	<i>Alnus rhombifolia</i>	1	28.5	40	30	4	3	X		X		
121	western sycamore	<i>Platanus racemosa</i>	1	21.8	40	35	4	3	X		X		
122	western sycamore	<i>Platanus racemosa</i>	1	28.3	45	40	4	3	X		X		
123	Canary Island pine	<i>Pinus canariensis</i>	1	20.5	40	20	4	4	X		X		
124	Canary Island pine	<i>Pinus canariensis</i>	1	20.2	40	20	4	4	X		X		
125	Canary Island pine	<i>Pinus canariensis</i>	1	21.6	40	25	4	4	X		X		
126	western sycamore	<i>Platanus racemosa</i>	1	16.0	40	25	4	4	X			X	
127	western sycamore	<i>Platanus racemosa</i>	1	18.0	40	25	4	4	X			X	
128	western sycamore	<i>Platanus racemosa</i>	1	16.0	40	25	4	4	X			X	
129	western sycamore	<i>Platanus racemosa</i>	1	10.0	30	25	3	3	X			X	

TREE DATA SUMMARY

Tree Number	Common Name	Species	# Main Trunks	DBH (in)	Height (ft)	Canopy Diameter (ft)	Health Rating	Aesthetic Rating	Location		Tree Type		Notes
									Project Site	Railroad Crossing	Heritage Tree	Non-Heritage	
130	western sycamore	<i>Platanus racemosa</i>	1	6.0	20	15	3	3	X			X	
131	western sycamore	<i>Platanus racemosa</i>	1	9.0	20	15	3	3	X			X	
132	western sycamore	<i>Platanus racemosa</i>	1	11.0	30	25	3	3	X			X	
133	western sycamore	<i>Platanus racemosa</i>	1	12.0	30	25	3	3	X			X	
134	western sycamore	<i>Platanus racemosa</i>	1	10.0	30	25	3	3	X			X	
135	western sycamore	<i>Platanus racemosa</i>	1	8.0	20	15	3	3	X			X	
136	western sycamore	<i>Platanus racemosa</i>	1	8.0	20	15	3	3	X			X	
137	western sycamore	<i>Platanus racemosa</i>	1	16.0	40	25	3	3	X			X	
138	western sycamore	<i>Platanus racemosa</i>	1	17.0	40	25	3	3	X			X	
139	Peruvian pepper	<i>Schinus molle</i>	2	2, 2	40	25	3	3	X			X	
140	Peruvian pepper	<i>Schinus molle</i>	4	3, 2, 2, 1	12	10	2	2	X			X	
141	Peruvian pepper	<i>Schinus molle</i>	4	7, 6, 2, 2	15	15	3	2	X			X	
142	Peruvian pepper	<i>Schinus molle</i>	3	5, 4, 4	20	15	3	2	X			X	
143	Peruvian pepper	<i>Schinus molle</i>	4	6, 4, 4, 2	20	15	3	2	X			X	
144	Mexican fan palm	<i>Washingtonia robusta</i>	1	9.0	20	15	3	3	X			X	
145	black willow	<i>Salix gooddingii</i>	1	5.0	12	10	3	3	X			X	
146	western sycamore	<i>Platanus racemosa</i>	1	10.0	30	25	3	3	X			X	
147	Peruvian pepper	<i>Schinus molle</i>	1	8.0	20	15	3	3	X			X	
148	Peruvian pepper	<i>Schinus molle</i>	1	5.0	12	10	3	3	X			X	
149	Peruvian pepper	<i>Schinus molle</i>	1	9.0	20	15	3	3	X			X	
150	Peruvian pepper	<i>Schinus molle</i>	1	4.0	10	10	3	3	X			X	
151	Peruvian pepper	<i>Schinus molle</i>	1	8.0	20	15	3	3	X			X	
152	western sycamore	<i>Platanus racemosa</i>	1	14.0	30	25	3	3	X			X	
153	western sycamore	<i>Platanus racemosa</i>	1	17.0	40	25	3	3	X			X	
154	western sycamore	<i>Platanus racemosa</i>	1	15.0	30	25	3	3	X			X	
155	western sycamore	<i>Platanus racemosa</i>	1	11.0	25	25	3	3	X			X	
156	western sycamore	<i>Platanus racemosa</i>	1	8.0	20	15	3	3	X			X	
157	western sycamore	<i>Platanus racemosa</i>	1	9.0	20	15	3	3	X			X	
158	western sycamore	<i>Platanus racemosa</i>	1	8.0	20	15	3	3	X			X	
159	western sycamore	<i>Platanus racemosa</i>	1	16.0	40	25	3	3	X			X	
160	Peruvian pepper	<i>Schinus molle</i>	4	2, 1, 1, 1	10	10	2	2	X			X	
161	western sycamore	<i>Platanus racemosa</i>	1	13.0	30	25	3	3	X			X	
162	western sycamore	<i>Platanus racemosa</i>	2	3, 2	10	10	3	2	X			X	
163	western sycamore	<i>Platanus racemosa</i>	1	3.0	10	10	3	3	X			X	
164	western sycamore	<i>Platanus racemosa</i>	1	4.0	10	10	3	3	X			X	
165	carrotwood	<i>Cupaniopsis anacardiodes</i>	1	18.0	40	25	3	3	X			X	
166	carrotwood	<i>Cupaniopsis anacardiodes</i>	1	15.0	25	25	3	3	X			X	
167	carrotwood	<i>Cupaniopsis anacardiodes</i>	1	11.0	30	25	3	3	X			X	
168	carrotwood	<i>Cupaniopsis anacardiodes</i>	1	16.0	40	25	3	3	X			X	
169	carrotwood	<i>Cupaniopsis anacardiodes</i>	1	8.0	20	15	3	3	X			X	
170	carrotwood	<i>Cupaniopsis anacardiodes</i>	1	12.0	30	25	3	3	X			X	
171	carrotwood	<i>Cupaniopsis anacardiodes</i>	1	11.0	30	25	3	3	X			X	
172	carrotwood	<i>Cupaniopsis anacardiodes</i>	1	8.0	20	15	3	3	X			X	

TREE DATA SUMMARY

Tree Number	Common Name	Species	# Main Trunks	DBH (in)	Height (ft)	Canopy Diameter (ft)	Health Rating	Aesthetic Rating	Location		Tree Type		Notes
									Project Site	Railroad Crossing	Heritage Tree	Non-Heritage	
173	carrotwood	<i>Cupaniopsis anacardiodes</i>	1	16.0	40	25	3	3	X			X	
174	carrotwood	<i>Cupaniopsis anacardiodes</i>	1	11.0	30	25	3	3	X			X	
175	carrotwood	<i>Cupaniopsis anacardiodes</i>	1	12.0	30	25	3	3	X			X	
176	carrotwood	<i>Cupaniopsis anacardiodes</i>	1	15.0	25	25	3	3	X			X	
177	carrotwood	<i>Cupaniopsis anacardiodes</i>	1	9.0	20	15	3	3	X			X	
178	carrotwood	<i>Cupaniopsis anacardiodes</i>	1	12.0	30	25	3	3	X			X	
179	carrotwood	<i>Cupaniopsis anacardiodes</i>	1	15.0	25	25	3	3	X			X	
180	carrotwood	<i>Cupaniopsis anacardiodes</i>	1	15.0	25	25	3	3	X			X	
181	carrotwood	<i>Cupaniopsis anacardiodes</i>	1	11.0	30	25	3	3	X			X	
182	carrotwood	<i>Cupaniopsis anacardiodes</i>	1	9.0	20	15	3	3	X			X	
183	carrotwood	<i>Cupaniopsis anacardiodes</i>	1	8.0	20	15	3	3	X			X	
184	carrotwood	<i>Cupaniopsis anacardiodes</i>	1	11.0	30	25	3	3	X			X	
185	carrotwood	<i>Cupaniopsis anacardiodes</i>	1	15.0	25	25	3	3	X			X	
186	carrotwood	<i>Cupaniopsis anacardiodes</i>	1	12.0	30	25	3	3	X			X	
187	carrotwood	<i>Cupaniopsis anacardiodes</i>	1	15.0	25	25	3	3	X			X	
188	carrotwood	<i>Cupaniopsis anacardiodes</i>	1	8.0	20	15	3	3	X			X	
189	carrotwood	<i>Cupaniopsis anacardiodes</i>	1	9.0	20	15	3	3	X			X	
190	carrotwood	<i>Cupaniopsis anacardiodes</i>	1	10.0	30	25	3	3	X			X	
191	carrotwood	<i>Cupaniopsis anacardiodes</i>	1	16.0	40	25	3	3	X			X	
192	carrotwood	<i>Cupaniopsis anacardiodes</i>	1	12.0	30	25	3	3	X			X	
193	white mulberry	<i>Morus alba</i>	3	2, 1, 1, 1	10	10	3	2	X			X	
194	Chinese elm	<i>Ulmus parviflora</i>	2	3, 3	15	15	3	3	X			X	
195	arroyo willow	<i>Salix lasiolepis</i>	4	2, 1, 1, 1	10	10	3	2	X			X	
196	arroyo willow	<i>Salix lasiolepis</i>	5	2, 2, 2, 1, 1	10	10	3	2	X			X	
197	Mexican fan palm	<i>Washingtonia robusta</i>	1	8.0	20	15	3	3	X			X	
198	carrotwood	<i>Cupaniopsis anacardiodes</i>	1	10.0	30	25	3	3	X			X	
199	carrotwood	<i>Cupaniopsis anacardiodes</i>	1	6.0	20	15	3	3	X			X	
200	carrotwood	<i>Cupaniopsis anacardiodes</i>	1	6.0	20	15	3	3	X			X	
201	carrotwood	<i>Cupaniopsis anacardiodes</i>	1	8.0	20	15	3	3	X			X	
202	carrotwood	<i>Cupaniopsis anacardiodes</i>	1	10.0	30	25	3	3	X			X	
203	carrotwood	<i>Cupaniopsis anacardiodes</i>	1	6.0	20	15	3	3	X			X	
204	carrotwood	<i>Cupaniopsis anacardiodes</i>	1	12.0	30	25	3	3	X			X	
205	carrotwood	<i>Cupaniopsis anacardiodes</i>	1	8.0	20	15	3	3	X			X	
206	carrotwood	<i>Cupaniopsis anacardiodes</i>	1	8.0	20	15	3	3	X			X	
207	carrotwood	<i>Cupaniopsis anacardiodes</i>	1	6.0	20	15	3	3	X			X	
208	carrotwood	<i>Cupaniopsis anacardiodes</i>	1	10.0	30	25	3	3	X			X	
209	carrotwood	<i>Cupaniopsis anacardiodes</i>	1	8.0	20	15	3	3	X			X	
210	carrotwood	<i>Cupaniopsis anacardiodes</i>	1	8.0	20	15	3	3	X			X	
211	carrotwood	<i>Cupaniopsis anacardiodes</i>	1	10.0	30	25	3	3	X			X	
212	carrotwood	<i>Cupaniopsis anacardiodes</i>	1	6.0	20	15	3	3	X			X	
213	carrotwood	<i>Cupaniopsis anacardiodes</i>	1	15.0	25	25	3	3	X			X	
214	carrotwood	<i>Cupaniopsis anacardiodes</i>	1	12.0	30	25	3	3	X			X	
215	carrotwood	<i>Cupaniopsis anacardiodes</i>	1	11.0	30	25	3	3	X			X	

## TREE DATA SUMMARY

Tree Number	Common Name	Species	# Main Trunks	DBH (in)	Height (ft)	Canopy Diameter (ft)	Health Rating	Aesthetic Rating	Location		Tree Type		Notes
									Project Site	Railroad Crossing	Heritage Tree	Non-Heritage	
216	western sycamore	<i>Platanus racemosa</i>	1	15.0	25	25	3	3	X			X	
217	western sycamore	<i>Platanus racemosa</i>	1	10.0	30	25	3	3	X			X	
218	western sycamore	<i>Platanus racemosa</i>	1	17.0	40	25	3	3	X			X	
219	western sycamore	<i>Platanus racemosa</i>	1	8.0	20	15	3	3	X			X	
220	western sycamore	<i>Platanus racemosa</i>	1	12.0	30	25	3	3	X			X	
221	western sycamore	<i>Platanus racemosa</i>	1	10.0	30	25	3	3	X			X	
222	western sycamore	<i>Platanus racemosa</i>	1	12.0	30	25	3	3	X			X	
223	carrotwood	<i>Cupaniopsis anacardioides</i>	1	6.0	20	15	3	3	X			X	
224	shamel ash	<i>Fraxinus uhdei</i>	1	9.0	20	15	3	3	X			X	
225	white mulberry	<i>Morus alba</i>	1	8.0	20	15	3	3	X			X	
226	western sycamore	<i>Platanus racemosa</i>	5	2, 2, 2, 1, 1	10	10	3	2	X			X	
227	Mexican fan palm	<i>Washingtonia robusta</i>	1	15.0	25	25	3	3	X			X	
228	white mulberry	<i>Morus alba</i>	1	9.0	20	15	3	3	X			X	
229	Peruvian pepper	<i>Schinus molle</i>	1	7.0	20	15	3	3	X			X	
230	white mulberry	<i>Morus alba</i>	1	9, 8	40	25	3	3	X			X	
231	carrotwood	<i>Cupaniopsis anacardioides</i>	1	14.0	30	25	3	3	X			X	
232	carrotwood	<i>Cupaniopsis anacardioides</i>	1	12.0	30	25	3	3	X			X	
233	carrotwood	<i>Cupaniopsis anacardioides</i>	1	14.0	30	25	3	3	X			X	
234	carrotwood	<i>Cupaniopsis anacardioides</i>	1	8.0	20	15	3	3	X			X	
235	carrotwood	<i>Cupaniopsis anacardioides</i>	1	6.0	20	15	3	3	X			X	
236	carrotwood	<i>Cupaniopsis anacardioides</i>	1	10.0	30	25	3	3	X			X	
237	carrotwood	<i>Cupaniopsis anacardioides</i>	1	12.0	30	25	3	3	X			X	
238	carrotwood	<i>Cupaniopsis anacardioides</i>	1	12.0	30	25	3	3	X			X	
239	western sycamore	<i>Platanus racemosa</i>	1	8.0	20	15	3	3	X			X	
240	arroyo willow	<i>Salix lasiolepis</i>	3	3, 2, 1	12	10	3	2	X			X	
241	arroyo willow	<i>Salix lasiolepis</i>	4	2, 2, 1, 1	12	10	3	2	X			X	
242	African sumac	<i>Searsia lancea</i>	5	3, 3, 3, 2, 1	15	15	3	2	X			X	
243	western sycamore	<i>Platanus racemosa</i>	1	14.0	30	25	3	3	X			X	
244	western sycamore	<i>Platanus racemosa</i>	1	10.0	30	25	3	3	X			X	
245	western sycamore	<i>Platanus racemosa</i>	1	11.0	30	25	3	3	X			X	
246	Peruvian pepper	<i>Schinus molle</i>	1	15.0	25	25	3	3	X			X	
247	red ironbark	<i>Eucalyptus sideroxylon</i>	1	14.0	30	25	3	3	X			X	
248	western sycamore	<i>Platanus racemosa</i>	1	10.0	30	25	3	3	X			X	
249	western sycamore	<i>Platanus racemosa</i>	1	7.0	20	15	3	3	X			X	
250	Peruvian pepper	<i>Schinus molle</i>	1	18.0	40	25	3	3	X			X	
251	Peruvian pepper	<i>Schinus molle</i>	1	7.0	20	15	3	3	X			X	
252	Peruvian pepper	<i>Schinus molle</i>	1	4.0	10	10	3	3	X			X	
253	African sumac	<i>Searsia lancea</i>	1	15.0	25	25	3	3	X			X	
254	African sumac	<i>Searsia lancea</i>	1	9.0	20	15	3	3	X			X	
255	African sumac	<i>Searsia lancea</i>	1	12.0	30	25	3	3	X			X	
256	African sumac	<i>Searsia lancea</i>	1	8.0	20	15	3	3	X			X	
257	African sumac	<i>Searsia lancea</i>	1	8.0	20	15	3	3	X			X	
258	African sumac	<i>Searsia lancea</i>	1	11.0	30	25	3	3	X			X	



## TREE DATA SUMMARY

Tree Number	Common Name	Species	# Main Trunks	DBH (in)	Height (ft)	Canopy Diameter (ft)	Health Rating	Aesthetic Rating	Location		Tree Type		Notes
									Project Site	Railroad Crossing	Heritage Tree	Non-Heritage	
259	African sumac	<i>Searsia lancea</i>	1	8.0	20	15	3	3	X			X	
260	African sumac	<i>Searsia lancea</i>	1	15.0	25	25	3	3	X			X	
261	African sumac	<i>Searsia lancea</i>	1	13.0	30	25	3	3	X			X	
262	African sumac	<i>Searsia lancea</i>	1	12.0	30	25	3	3	X			X	
263	African sumac	<i>Searsia lancea</i>	1	14.0	30	25	3	3	X			X	
264	tree-of-heaven	<i>Ailanthus altissima</i>	2	8, 8	40	25	3	3	X			X	
265	Brazilian pepper	<i>Schinus terebinthifolius</i>	2	5, 1	40	25	3	3	X			X	
266	Brazilian pepper	<i>Schinus terebinthifolius</i>	1	4.0	10	10	3	3	X			X	
267	Mexican fan palm	<i>Washingtonia robusta</i>	1	10.0	30	25	3	3	X			X	
268	Canary Island pine	<i>Pinus canariensis</i>	1	9.0	20	15	3	3	X			X	
269	Canary Island pine	<i>Pinus canariensis</i>	1	6.0	20	15	3	3	X			X	
270	Canary Island pine	<i>Pinus canariensis</i>	1	6.0	20	15	3	3	X			X	
271	Canary Island pine	<i>Pinus canariensis</i>	1	8.0	20	15	3	3	X			X	
272	Brazilian pepper	<i>Schinus terebinthifolius</i>	2	10, 3	20	15	3	3	X			X	
273	Brazilian pepper	<i>Schinus terebinthifolius</i>	3	6, 4, 2	12	10	3	2	X			X	
274	carrotwood	<i>Cupaniopsis anacardiodes</i>	2	4, 2	12	10	3	2	X			X	
275	Brazilian pepper	<i>Schinus terebinthifolius</i>	1	10.0	30	25	3	3	X			X	
276	Brazilian pepper	<i>Schinus terebinthifolius</i>	1	6.0	20	15	3	3	X			X	
277	Brazilian pepper	<i>Schinus terebinthifolius</i>	1	6.0	20	15	3	3	X			X	
278	Brazilian pepper	<i>Schinus terebinthifolius</i>	1	10.0	30	25	3	3	X			X	
279	Brazilian pepper	<i>Schinus terebinthifolius</i>	1	8.0	20	15	3	3	X			X	
280	Brazilian pepper	<i>Schinus terebinthifolius</i>	1	6.0	20	15	3	3	X			X	
281	Brazilian pepper	<i>Schinus terebinthifolius</i>	1	8.0	20	15	3	3	X			X	
282	Brazilian pepper	<i>Schinus terebinthifolius</i>	1	8.0	20	15	3	3	X			X	
283	Brazilian pepper	<i>Schinus terebinthifolius</i>	1	10.0	30	25	3	3	X			X	
284	Brazilian pepper	<i>Schinus terebinthifolius</i>	1	6.0	20	15	3	3	X			X	
285	Brazilian pepper	<i>Schinus terebinthifolius</i>	1	8.0	20	15	3	3	X			X	
286	Brazilian pepper	<i>Schinus terebinthifolius</i>	6	3, 3, 3, 2, 2, 1	15	15	3	2	X			X	
287	Canary Island pine	<i>Pinus canariensis</i>	1	14.0	30	25	3	3	X			X	
288	Canary Island pine	<i>Pinus canariensis</i>	1	8.0	20	15	3	3	X			X	
289	Canary Island pine	<i>Pinus canariensis</i>	1	8.0	20	15	3	3	X			X	
290	Canary Island pine	<i>Pinus canariensis</i>	1	12.0	30	25	3	3	X			X	
291	Canary Island pine	<i>Pinus canariensis</i>	1	10.0	30	25	3	3	X			X	
292	Canary Island pine	<i>Pinus canariensis</i>	1	14.0	30	25	3	3	X			X	
293	Canary Island pine	<i>Pinus canariensis</i>	1	8.0	20	15	3	3	X			X	
294	Canary Island pine	<i>Pinus canariensis</i>	1	14.0	30	25	3	3	X			X	
295	Canary Island pine	<i>Pinus canariensis</i>	1	12.0	30	25	3	3	X			X	
296	Canary Island pine	<i>Pinus canariensis</i>	1	10.0	30	25	3	3	X			X	
297	Canary Island pine	<i>Pinus canariensis</i>	1	10.0	30	25	3	3	X			X	
298	Canary Island pine	<i>Pinus canariensis</i>	1	8.0	20	15	3	3	X			X	
299	Canary Island pine	<i>Pinus canariensis</i>	1	10.0	30	25	3	3	X			X	
300	Canary Island pine	<i>Pinus canariensis</i>	1	9.0	20	15	3	3	X			X	
301	Canary Island pine	<i>Pinus canariensis</i>	1	9.0	20	15	3	3	X			X	

TREE DATA SUMMARY

Tree Number	Common Name	Species	# Main Trunks	DBH (in)	Height (ft)	Canopy Diameter (ft)	Health Rating	Aesthetic Rating	Location		Tree Type		Notes
									Project Site	Railroad Crossing	Heritage Tree	Non-Heritage	
302	Canary Island pine	<i>Pinus canariensis</i>	1	10.0	30	25	3	3	X			X	
303	Canary Island pine	<i>Pinus canariensis</i>	1	12.0	30	25	3	3	X			X	
304	Canary Island pine	<i>Pinus canariensis</i>	1	12.0	30	25	3	3	X			X	
305	Canary Island pine	<i>Pinus canariensis</i>	1	14.0	30	25	3	3	X			X	
306	Canary Island pine	<i>Pinus canariensis</i>	1	8.0	20	15	3	3	X			X	
307	Canary Island pine	<i>Pinus canariensis</i>	1	8.0	20	15	3	3	X			X	
308	Canary Island pine	<i>Pinus canariensis</i>	1	10.0	30	25	3	3	X			X	
309	Canary Island pine	<i>Pinus canariensis</i>	1	9.0	20	15	3	3	X			X	
310	Canary Island pine	<i>Pinus canariensis</i>	1	8.0	20	15	3	3	X			X	
311	Canary Island pine	<i>Pinus canariensis</i>	1	11.0	30	25	3	3	X			X	
312	Canary Island pine	<i>Pinus canariensis</i>	1	12.0	30	25	3	3	X			X	
313	Canary Island pine	<i>Pinus canariensis</i>	1	14.0	30	25	3	3	X			X	
314	Canary Island pine	<i>Pinus canariensis</i>	1	14.0	30	25	3	3	X			X	
315	Canary Island pine	<i>Pinus canariensis</i>	1	11.0	30	25	3	3	X			X	
316	Canary Island pine	<i>Pinus canariensis</i>	1	10.0	30	25	3	3	X			X	
317	Canary Island pine	<i>Pinus canariensis</i>	1	8.0	20	15	3	3	X			X	
318	Peruvian pepper	<i>Schinus molle</i>	3	3, 2, 2	12	10	3	2	X			X	
319	Peruvian pepper	<i>Schinus molle</i>	5	8, 4, 4, 4, 2	15	15	3	2	X			X	
320	Peruvian pepper	<i>Schinus molle</i>	4	3, 3, 2, 1	12	10	3	2	X			X	
321	Peruvian pepper	<i>Schinus molle</i>	4	5, 3, 3, 1	15	15	3	2	X			X	
322	western sycamore	<i>Platanus racemosa</i>	1	16.0	40	25	3	3	X			X	
323	Peruvian pepper	<i>Schinus molle</i>	1	6.0	20	15	3	3	X			X	
324	western sycamore	<i>Platanus racemosa</i>	1	15.0	25	25	3	3	X			X	
325	Peruvian pepper	<i>Schinus molle</i>	1	5, 2	40	25	3	3	X			X	
326	red ironbark	<i>Eucalyptus sideroxylon</i>	1	4.0	10	10	3	3	X			X	
327	Peruvian pepper	<i>Schinus molle</i>	1	7, 6	40	25	3	3	X			X	
328	Peruvian pepper	<i>Schinus molle</i>	1	12.0	30	25	3	3	X			X	
329	Peruvian pepper	<i>Schinus molle</i>	1	7.0	20	15	3	3	X			X	
330	Peruvian pepper	<i>Schinus molle</i>	1	10.0	30	25	3	3	X			X	
331	Peruvian pepper	<i>Schinus molle</i>	1	10.0	30	25	3	3	X			X	
332	Peruvian pepper	<i>Schinus molle</i>	1	8.0	20	15	3	3	X			X	
333	Peruvian pepper	<i>Schinus molle</i>	1	12.0	30	25	3	3	X			X	
334	Peruvian pepper	<i>Schinus molle</i>	1	7.0	20	15	3	3	X			X	
335	Peruvian pepper	<i>Schinus molle</i>	1	6.0	20	15	3	3	X			X	
336	Peruvian pepper	<i>Schinus molle</i>	1	12.0	30	25	3	3	X			X	
337	Peruvian pepper	<i>Schinus molle</i>	1	8.0	20	15	3	3	X			X	
338	Peruvian pepper	<i>Schinus molle</i>	1	8.0	20	15	3	3	X			X	
339	Peruvian pepper	<i>Schinus molle</i>	1	10.0	30	25	3	3	X			X	
340	Peruvian pepper	<i>Schinus molle</i>	1	14.0	30	25	3	3	X			X	
341	Peruvian pepper	<i>Schinus molle</i>	1	12.0	30	25	3	3	X			X	
342	red ironbark	<i>Eucalyptus sideroxylon</i>	1	5.0	12	10	3	3	X			X	
343	red ironbark	<i>Eucalyptus sideroxylon</i>	1	5.0	12	10	3	3	X			X	
344	red ironbark	<i>Eucalyptus sideroxylon</i>	1	7.0	20	15	3	3	X			X	

TREE DATA SUMMARY

Tree Number	Common Name	Species	# Main Trunks	DBH (in)	Height (ft)	Canopy Diameter (ft)	Health Rating	Aesthetic Rating	Location		Tree Type		Notes
									Project Site	Railroad Crossing	Heritage Tree	Non-Heritage	
345	red ironbark	<i>Eucalyptus sideroxylon</i>	1	4.0	10	10	3	3	X			X	
346	red ironbark	<i>Eucalyptus sideroxylon</i>	1	8.0	20	15	3	3	X			X	
347	Peruvian pepper	<i>Schinus molle</i>	1	15.0	30	25	3	3	X			X	
348	Peruvian pepper	<i>Schinus molle</i>	1	12.0	30	25	3	3	X			X	
349	Peruvian pepper	<i>Schinus molle</i>	1	18.0	40	25	3	3	X			X	
350	Peruvian pepper	<i>Schinus molle</i>	1	10.0	30	25	3	3	X			X	
351	Peruvian pepper	<i>Schinus molle</i>	1	11.0	30	25	3	3	X			X	
352	red ironbark	<i>Eucalyptus sideroxylon</i>	1	7.0	20	15	3	3	X			X	
353	red ironbark	<i>Eucalyptus sideroxylon</i>	1	6.0	20	15	3	3	X			X	
354	red ironbark	<i>Eucalyptus sideroxylon</i>	1	5.0	15	15	3	3	X			X	
355	red ironbark	<i>Eucalyptus sideroxylon</i>	1	8.0	20	15	3	3	X			X	
356	red ironbark	<i>Eucalyptus sideroxylon</i>	1	4.0	10	10	3	3	X			X	
357	red ironbark	<i>Eucalyptus sideroxylon</i>	1	4.0	10	10	3	3	X			X	
358	red ironbark	<i>Eucalyptus sideroxylon</i>	1	6.0	20	15	3	3	X			X	
359	red ironbark	<i>Eucalyptus sideroxylon</i>	1	4.0	10	10	3	3	X			X	
360	red ironbark	<i>Eucalyptus sideroxylon</i>	1	7.0	20	15	3	3	X			X	
361	red ironbark	<i>Eucalyptus sideroxylon</i>	1	8.0	20	15	3	3	X			X	
362	red ironbark	<i>Eucalyptus sideroxylon</i>	1	4.0	10	10	3	3	X			X	
363	red ironbark	<i>Eucalyptus sideroxylon</i>	1	5.0	15	15	3	3	X			X	
364	red ironbark	<i>Eucalyptus sideroxylon</i>	1	6.0	20	15	3	3	X			X	
365	red ironbark	<i>Eucalyptus sideroxylon</i>	1	6.0	20	15	3	3	X			X	
366	red ironbark	<i>Eucalyptus sideroxylon</i>	1	7.0	20	15	3	3	X			X	
367	red ironbark	<i>Eucalyptus sideroxylon</i>	1	8.0	20	15	3	3	X			X	
368	red ironbark	<i>Eucalyptus sideroxylon</i>	1	10.0	30	25	3	3	X			X	
369	red ironbark	<i>Eucalyptus sideroxylon</i>	1	4.0	10	10	3	3	X			X	
370	Peruvian pepper	<i>Schinus molle</i>	1	12.0	30	25	3	3	X			X	
371	Peruvian pepper	<i>Schinus molle</i>	1	15.0	25	25	3	3	X			X	
372	Peruvian pepper	<i>Schinus molle</i>	1	8.0	20	15	3	3	X			X	
373	Peruvian pepper	<i>Schinus molle</i>	1	17.0	40	25	3	3	X			X	
374	Peruvian pepper	<i>Schinus molle</i>	1	12.0	30	25	3	3	X			X	
375	Peruvian pepper	<i>Schinus molle</i>	1	11.0	30	25	3	3	X			X	
376	Peruvian pepper	<i>Schinus molle</i>	1	10.0	30	25	3	3	X			X	
377	western sycamore	<i>Platanus racemosa</i>	1	18.0	40	25	3	3	X			X	
378	western sycamore	<i>Platanus racemosa</i>	1	11.0	30	25	3	3	X			X	
379	western sycamore	<i>Platanus racemosa</i>	1	10.0	30	25	3	3	X			X	
380	western sycamore	<i>Platanus racemosa</i>	1	14.0	30	25	3	3	X			X	
381	western sycamore	<i>Platanus racemosa</i>	1	8.0	20	15	3	3	X			X	
382	western sycamore	<i>Platanus racemosa</i>	1	16.0	40	25	3	3	X			X	
383	Peruvian pepper	<i>Schinus molle</i>	2	10, 6	25	25	3	3	X			X	
384	Peruvian pepper	<i>Schinus molle</i>	1	17.0	40	25	3	3	X			X	
385	Peruvian pepper	<i>Schinus molle</i>	1	6.0	20	15	3	3	X			X	
386	Peruvian pepper	<i>Schinus molle</i>	1	12.0	30	25	3	3	X			X	
387	western sycamore	<i>Platanus racemosa</i>	1	14.0	30	25	3	3	X			X	

## TREE DATA SUMMARY

Tree Number	Common Name	Species	# Main Trunks	DBH (in)	Height (ft)	Canopy Diameter (ft)	Health Rating	Aesthetic Rating	Location		Tree Type		Notes
									Project Site	Railroad Crossing	Heritage Tree	Non-Heritage	
388	western sycamore	<i>Platanus racemosa</i>	1	11.0	30	25	3	3	X			X	
389	western sycamore	<i>Platanus racemosa</i>	1	8.0	20	15	3	3	X			X	
390	Brazilian pepper	<i>Schinus terebinthifolius</i>	3	2, 2, 1	12	10	3	2	X			X	
391	Brazilian pepper	<i>Schinus terebinthifolius</i>	3	3, 1, 1	15	15	3	2	X			X	
392	carrotwood	<i>Cupaniopsis anacardioides</i>	2	11, 7	25	25	3	2	X			X	
393	carrotwood	<i>Cupaniopsis anacardioides</i>	1	6.0	20	15	3	3	X			X	
394	silk floss	<i>Ceiba speciosa</i>	1	10.0	30	25	3	3	X			X	
395	Canary Island pine	<i>Pinus canariensis</i>	1	7.0	20	15	3	3	X			X	
396	American sweetgum	<i>Liquidambar styraciflua</i>	1	10.0	30	25	3	3	X			X	
397	Canary Island pine	<i>Pinus canariensis</i>	1	8.0	20	15	3	3	X			X	
398	Canary Island pine	<i>Pinus canariensis</i>	1	9.0	20	15	3	3	X			X	
399	Canary Island pine	<i>Pinus canariensis</i>	1	11.0	30	25	3	3	X			X	
400	Canary Island pine	<i>Pinus canariensis</i>	1	12.0	30	25	3	3	X			X	
401	Canary Island pine	<i>Pinus canariensis</i>	1	8.0	20	15	3	3	X			X	
402	Canary Island pine	<i>Pinus canariensis</i>	1	8.0	20	15	3	3	X			X	
403	western sycamore	<i>Platanus racemosa</i>	1	15.0	30	25	3	3	X			X	
404	shamel ash	<i>Fraxinus uhdei</i>	1	4.0	10	10	3	3	X			X	
405	western sycamore	<i>Platanus racemosa</i>	1	10.0	30	25	3	3	X			X	
406	Brazilian pepper	<i>Schinus terebinthifolius</i>	2	8, 6	25	25	3	3	X			X	
407	Brazilian pepper	<i>Schinus terebinthifolius</i>	2	9, 5	25	25	3	3	X			X	
408	western sycamore	<i>Platanus racemosa</i>	1	10.0	30	25	3	3	X			X	
409	Chinese elm	<i>Ulmus parviflora</i>	1	5.0	12	10	3	3	X			X	
410	western sycamore	<i>Platanus racemosa</i>	1	11.0	30	25	3	3	X			X	
411	western sycamore	<i>Platanus racemosa</i>	1	11.0	30	25	3	3	X			X	
412	western sycamore	<i>Platanus racemosa</i>	1	8.0	20	15	3	3	X			X	
413	western sycamore	<i>Platanus racemosa</i>	1	9.0	20	15	3	3	X			X	
414	western sycamore	<i>Platanus racemosa</i>	1	12.0	30	25	3	3	X			X	
415	western sycamore	<i>Platanus racemosa</i>	1	10.0	30	25	3	3	X			X	
416	silk floss	<i>Ceiba speciosa</i>	1	7.0	20	15	3	3	X			X	
417	silk floss	<i>Ceiba speciosa</i>	1	8.0	20	15	3	3	X			X	
418	silk floss	<i>Ceiba speciosa</i>	1	8.0	20	15	3	3	X			X	
419	silk floss	<i>Ceiba speciosa</i>	1	6.0	20	15	3	3	X			X	
420	silk floss	<i>Ceiba speciosa</i>	1	10.0	30	25	3	3	X			X	
421	silk floss	<i>Ceiba speciosa</i>	1	10.0	30	25	3	3	X			X	
422	silk floss	<i>Ceiba speciosa</i>	1	10.0	30	25	3	3	X			X	
423	silk floss	<i>Ceiba speciosa</i>	1	8.0	20	15	3	3	X			X	
424	silk floss	<i>Ceiba speciosa</i>	1	12.0	30	25	3	3	X			X	
425	Brazilian pepper	<i>Schinus terebinthifolius</i>	1	9.0	20	15	3	3	X			X	
426	Brazilian pepper	<i>Schinus terebinthifolius</i>	1	10.0	30	25	3	3	X			X	
427	Brazilian pepper	<i>Schinus terebinthifolius</i>	1	6.0	20	15	3	3	X			X	
428	Brazilian pepper	<i>Schinus terebinthifolius</i>	1	6.0	20	15	3	3	X			X	
429	Brazilian pepper	<i>Schinus terebinthifolius</i>	1	11.0	30	25	3	3	X			X	
430	Brazilian pepper	<i>Schinus terebinthifolius</i>	1	8.0	20	15	3	3	X			X	

## TREE DATA SUMMARY

Tree Number	Common Name	Species	# Main Trunks	DBH (in)	Height (ft)	Canopy Diameter (ft)	Health Rating	Aesthetic Rating	Location		Tree Type		Notes
									Project Site	Railroad Crossing	Heritage Tree	Non-Heritage	
431	Brazilian pepper	<i>Schinus terebinthifolius</i>	1	6.0	20	15	3	3	X			X	
432	Brazilian pepper	<i>Schinus terebinthifolius</i>	1	12.0	30	25	3	3	X			X	
433	Brazilian pepper	<i>Schinus terebinthifolius</i>	1	6.0	20	15	3	3	X			X	
434	Brazilian pepper	<i>Schinus terebinthifolius</i>	1	5.0	15	15	3	3	X			X	
435	Brazilian pepper	<i>Schinus terebinthifolius</i>	1	6.0	20	15	3	3	X			X	
436	Brazilian pepper	<i>Schinus terebinthifolius</i>	1	8.0	20	15	3	3	X			X	
437	Brazilian pepper	<i>Schinus terebinthifolius</i>	1	9.0	20	15	3	3	X			X	
438	Brazilian pepper	<i>Schinus terebinthifolius</i>	1	10.0	30	25	3	3	X			X	
439	Brazilian pepper	<i>Schinus terebinthifolius</i>	1	8.0	20	15	3	3	X			X	
440	Brazilian pepper	<i>Schinus terebinthifolius</i>	1	6.0	20	15	3	3	X			X	
441	Brazilian pepper	<i>Schinus terebinthifolius</i>	1	11.0	30	25	3	3	X			X	
442	Brazilian pepper	<i>Schinus terebinthifolius</i>	1	5.0	12	10	3	3	X			X	
443	Brazilian pepper	<i>Schinus terebinthifolius</i>	1	13.0	30	25	3	3	X			X	
444	western sycamore	<i>Platanus racemosa</i>	1	9.0	20	15	3	3	X			X	
445	western sycamore	<i>Platanus racemosa</i>	1	11.0	30	25	3	3	X			X	
446	western sycamore	<i>Platanus racemosa</i>	1	6.0	20	15	3	3	X			X	
447	western sycamore	<i>Platanus racemosa</i>	1	8.0	20	15	3	3	X			X	
448	western sycamore	<i>Platanus racemosa</i>	1	10.0	30	25	3	3	X			X	
449	silk floss	<i>Ceiba speciosa</i>	1	12.0	30	25	3	3	X			X	
450	silk floss	<i>Ceiba speciosa</i>	1	8.0	20	15	3	3	X			X	
451	silk floss	<i>Ceiba speciosa</i>	1	8.0	20	15	3	3	X			X	
452	western sycamore	<i>Platanus racemosa</i>	1	13.0	30	25	3	3	X			X	
453	western sycamore	<i>Platanus racemosa</i>	1	9.0	20	15	3	3	X			X	
454	western sycamore	<i>Platanus racemosa</i>	1	11.0	30	25	3	3	X			X	
455	western sycamore	<i>Platanus racemosa</i>	1	7.0	20	15	3	3	X			X	
456	silk floss	<i>Ceiba speciosa</i>	1	10.0	30	25	3	3	X			X	
457	silk floss	<i>Ceiba speciosa</i>	1	12.0	30	25	3	3	X			X	
458	silk floss	<i>Ceiba speciosa</i>	1	11.0	30	25	3	3	X			X	
459	western sycamore	<i>Platanus racemosa</i>	1	18.0	40	25	3	3	X			X	
460	western sycamore	<i>Platanus racemosa</i>	1	16.0	40	25	3	3	X			X	
461	western sycamore	<i>Platanus racemosa</i>	1	10.0	30	25	3	3	X			X	
462	western sycamore	<i>Platanus racemosa</i>	1	12.0	30	25	3	3	X			X	
463	western sycamore	<i>Platanus racemosa</i>	1	10.0	30	25	3	3	X			X	
464	western sycamore	<i>Platanus racemosa</i>	1	8.0	20	15	3	3	X			X	
465	silk floss	<i>Ceiba speciosa</i>	1	11.0	30	25	3	3	X			X	
466	silk floss	<i>Ceiba speciosa</i>	1	16.0	40	25	3	3	X			X	
467	western sycamore	<i>Platanus racemosa</i>	1	15.0	30	25	3	3	X			X	
468	western sycamore	<i>Platanus racemosa</i>	1	4.0	10	10	3	3	X			X	
469	western sycamore	<i>Platanus racemosa</i>	1	5.0	12	10	3	3	X			X	
470	western sycamore	<i>Platanus racemosa</i>	1	8.0	20	15	3	3	X			X	
471	western sycamore	<i>Platanus racemosa</i>	1	11.0	30	25	3	3	X			X	
472	western sycamore	<i>Platanus racemosa</i>	1	10.0	30	25	3	3	X			X	
473	western sycamore	<i>Platanus racemosa</i>	1	9.0	20	15	3	3	X			X	

## TREE DATA SUMMARY

Tree Number	Common Name	Species	# Main Trunks	DBH (in)	Height (ft)	Canopy Diameter (ft)	Health Rating	Aesthetic Rating	Location		Tree Type		Notes
									Project Site	Railroad Crossing	Heritage Tree	Non-Heritage	
474	western sycamore	<i>Platanus racemosa</i>	1	16.0	40	25	3	3	X			X	
475	western sycamore	<i>Platanus racemosa</i>	1	11.0	30	25	3	3	X			X	
476	western sycamore	<i>Platanus racemosa</i>	1	8.0	20	15	3	3	X			X	
477	American sweetgum	<i>Liquidambar styraciflua</i>	1	12.0	30	25	3	3	X			X	
478	American sweetgum	<i>Liquidambar styraciflua</i>	1	8.0	20	15	3	3	X			X	
479	American sweetgum	<i>Liquidambar styraciflua</i>	1	11.0	30	25	3	3	X			X	
480	American sweetgum	<i>Liquidambar styraciflua</i>	1	7.0	20	15	3	3	X			X	
481	western sycamore	<i>Platanus racemosa</i>	1	18.0	40	25	3	3	X			X	
482	western sycamore	<i>Platanus racemosa</i>	1	11.0	30	25	3	3	X			X	
483	western sycamore	<i>Platanus racemosa</i>	1	15.0	35	25	3	3	X			X	
484	western sycamore	<i>Platanus racemosa</i>	1	9.0	20	15	3	3	X			X	
485	western sycamore	<i>Platanus racemosa</i>	1	5.0	15	15	3	3	X			X	
486	western sycamore	<i>Platanus racemosa</i>	1	6.0	20	15	3	3	X			X	
487	western sycamore	<i>Platanus racemosa</i>	1	7.0	20	15	3	3	X			X	
488	western sycamore	<i>Platanus racemosa</i>	1	11.0	30	25	3	3	X			X	
489	western sycamore	<i>Platanus racemosa</i>	1	8.0	20	15	3	3	X			X	
490	western sycamore	<i>Platanus racemosa</i>	1	8.0	20	15	3	3	X			X	
491	western sycamore	<i>Platanus racemosa</i>	1	10.0	30	25	3	3	X			X	
492	western sycamore	<i>Platanus racemosa</i>	1	14.0	30	25	3	3	X			X	
493	western sycamore	<i>Platanus racemosa</i>	1	16.0	40	25	3	3	X			X	
494	western sycamore	<i>Platanus racemosa</i>	1	11.0	30	25	3	3	X			X	
495	western sycamore	<i>Platanus racemosa</i>	1	8.0	20	15	3	3	X			X	
496	western sycamore	<i>Platanus racemosa</i>	1	8.0	20	15	3	3	X			X	
497	western sycamore	<i>Platanus racemosa</i>	1	10.0	30	25	3	3	X			X	
498	western sycamore	<i>Platanus racemosa</i>	1	15.0	30	25	3	3	X			X	
499	western sycamore	<i>Platanus racemosa</i>	1	6.0	20	15	3	3	X			X	
500	western sycamore	<i>Platanus racemosa</i>	1	7.0	20	15	3	3	X			X	
501	western sycamore	<i>Platanus racemosa</i>	1	10.0	30	25	3	3	X			X	
502	western sycamore	<i>Platanus racemosa</i>	1	15.0	30	25	3	3	X			X	
503	western sycamore	<i>Platanus racemosa</i>	1	11.0	30	25	3	3	X			X	
504	western sycamore	<i>Platanus racemosa</i>	1	12.0	30	25	3	3	X			X	
505	western sycamore	<i>Platanus racemosa</i>	1	10.0	30	25	3	3	X			X	
506	Brazilian pepper	<i>Schinus terebinthifolius</i>	6	10, 8, 8, 5, 4, 4	25	25	3	2	X			X	
507	American sweetgum	<i>Liquidambar styraciflua</i>	1	9.0	20	15	3	3	X			X	
508	American sweetgum	<i>Liquidambar styraciflua</i>	1	11.0	30	25	3	3	X			X	
509	American sweetgum	<i>Liquidambar styraciflua</i>	1	8.0	20	15	3	3	X			X	
510	American sweetgum	<i>Liquidambar styraciflua</i>	1	15.0	35	25	3	3	X			X	
511	American sweetgum	<i>Liquidambar styraciflua</i>	1	12.0	30	25	3	3	X			X	
512	American sweetgum	<i>Liquidambar styraciflua</i>	1	10.0	30	25	3	3	X			X	
513	American sweetgum	<i>Liquidambar styraciflua</i>	1	8.0	20	15	3	3	X			X	
514	American sweetgum	<i>Liquidambar styraciflua</i>	1	8.0	20	15	3	3	X			X	
515	American sweetgum	<i>Liquidambar styraciflua</i>	1	14.0	30	25	3	3	X			X	
516	American sweetgum	<i>Liquidambar styraciflua</i>	1	6.0	20	15	3	3	X			X	

## TREE DATA SUMMARY

Tree Number	Common Name	Species	# Main Trunks	DBH (in)	Height (ft)	Canopy Diameter (ft)	Health Rating	Aesthetic Rating	Location		Tree Type		Notes
									Project Site	Railroad Crossing	Heritage Tree	Non-Heritage	
517	American sweetgum	<i>Liquidambar styraciflua</i>	1	6.0	20	15	3	3	X			X	
518	American sweetgum	<i>Liquidambar styraciflua</i>	1	10.0	30	25	3	3	X			X	
519	American sweetgum	<i>Liquidambar styraciflua</i>	1	6.0	20	15	3	3	X			X	
520	American sweetgum	<i>Liquidambar styraciflua</i>	1	11.0	30	25	3	3	X			X	
521	American sweetgum	<i>Liquidambar styraciflua</i>	1	6.0	20	15	3	3	X			X	
522	American sweetgum	<i>Liquidambar styraciflua</i>	1	6.0	20	15	3	3	X			X	
523	American sweetgum	<i>Liquidambar styraciflua</i>	1	10.0	30	25	3	3	X			X	
524	American sweetgum	<i>Liquidambar styraciflua</i>	1	10.0	30	25	3	3	X			X	
525	Italian stone pine	<i>Pinus pinea</i>	1	12.0	30	25	3	3	X			X	
526	American sweetgum	<i>Liquidambar styraciflua</i>	1	9.0	20	15	3	3	X			X	
527	American sweetgum	<i>Liquidambar styraciflua</i>	1	8.0	20	15	3	3	X			X	
528	Brazilian pepper	<i>Schinus terebinthifolius</i>	1	12.0	30	25	3	3	X			X	
529	Brazilian pepper	<i>Schinus terebinthifolius</i>	1	10.0	30	25	3	3	X			X	
530	Brazilian pepper	<i>Schinus terebinthifolius</i>	1	4.0	10	10	3	3	X			X	
531	Brazilian pepper	<i>Schinus terebinthifolius</i>	1	8.0	20	15	3	3	X			X	
532	Brazilian pepper	<i>Schinus terebinthifolius</i>	1	8.0	20	15	3	3	X			X	
533	Brazilian pepper	<i>Schinus terebinthifolius</i>	1	10.0	30	25	3	3	X			X	
534	Brazilian pepper	<i>Schinus terebinthifolius</i>	1	6.0	20	15	3	3	X			X	
535	Brazilian pepper	<i>Schinus terebinthifolius</i>	1	12.0	30	25	3	3	X			X	
536	Brazilian pepper	<i>Schinus terebinthifolius</i>	1	16.0	40	25	3	3	X			X	
537	Brazilian pepper	<i>Schinus terebinthifolius</i>	1	11.0	30	25	3	3	X			X	
538	Brazilian pepper	<i>Schinus terebinthifolius</i>	1	10.0	30	25	3	3	X			X	
539	Brazilian pepper	<i>Schinus terebinthifolius</i>	1	10.0	30	25	3	3	X			X	
540	Brazilian pepper	<i>Schinus terebinthifolius</i>	1	8.0	20	15	3	3	X			X	
541	Brazilian pepper	<i>Schinus terebinthifolius</i>	1	8.0	20	15	3	3	X			X	
542	Brazilian pepper	<i>Schinus terebinthifolius</i>	1	9.0	20	15	3	3	X			X	
543	Brazilian pepper	<i>Schinus terebinthifolius</i>	1	6.0	20	15	3	3	X			X	
544	Brazilian pepper	<i>Schinus terebinthifolius</i>	1	11.0	30	25	3	3	X			X	
545	Brazilian pepper	<i>Schinus terebinthifolius</i>	1	10.0	30	25	3	3	X			X	
546	Brazilian pepper	<i>Schinus terebinthifolius</i>	1	15.0	35	25	3	3	X			X	
547	Brazilian pepper	<i>Schinus terebinthifolius</i>	1	10.0	30	25	3	3	X			X	
548	Brazilian pepper	<i>Schinus terebinthifolius</i>	1	6.0	20	15	3	3	X			X	
549	American sweetgum	<i>Liquidambar styraciflua</i>	1	10.0	30	25	3	3	X			X	
550	American sweetgum	<i>Liquidambar styraciflua</i>	1	11.0	30	25	3	3	X			X	
551	Brazilian pepper	<i>Schinus terebinthifolius</i>	1	11.0	30	25	3	3	X			X	
552	Brazilian pepper	<i>Schinus terebinthifolius</i>	1	11.0	30	25	3	3	X			X	
553	American sweetgum	<i>Liquidambar styraciflua</i>	1	8.0	20	15	3	3	X			X	
554	American sweetgum	<i>Liquidambar styraciflua</i>	1	14.0	30	25	3	3	X			X	
555	American sweetgum	<i>Liquidambar styraciflua</i>	1	10.0	30	25	3	3	X			X	
556	American sweetgum	<i>Liquidambar styraciflua</i>	1	6.0	20	15	3	3	X			X	
557	American sweetgum	<i>Liquidambar styraciflua</i>	1	6.0	20	15	3	3	X			X	
558	American sweetgum	<i>Liquidambar styraciflua</i>	1	11.0	30	25	3	3	X			X	
559	American sweetgum	<i>Liquidambar styraciflua</i>	1	10.0	30	25	3	3	X			X	

TREE DATA SUMMARY

Tree Number	Common Name	Species	# Main Trunks	DBH (in)	Height (ft)	Canopy Diameter (ft)	Health Rating	Aesthetic Rating	Location		Tree Type		Notes
									Project Site	Railroad Crossing	Heritage Tree	Non-Heritage	
560	American sweetgum	<i>Liquidambar styraciflua</i>	1	8.0	20	15	3	3	X			X	
561	American sweetgum	<i>Liquidambar styraciflua</i>	1	8.0	20	15	3	3	X			X	
562	American sweetgum	<i>Liquidambar styraciflua</i>	1	6.0	20	15	3	3	X			X	
563	American sweetgum	<i>Liquidambar styraciflua</i>	1	7.0	20	15	3	3	X			X	
564	Brazilian pepper	<i>Schinus terebinthifolius</i>	2	2, 2	40	25	3	2	X			X	
565	Brazilian pepper	<i>Schinus terebinthifolius</i>	6	5, 4, 2, 2, 1, 1	15	15	3	2	X			X	
566	white alder	<i>Alnus rhombifolia</i>	1	12.0	30	25	3	3	X			X	
567	shamel ash	<i>Fraxinus uhdei</i>	1	5.0	18	15	3	3	X			X	
568	white alder	<i>Alnus rhombifolia</i>	1	11.0	30	25	3	3	X			X	
569	Canary Island pine	<i>Pinus canariensis</i>	1	12.0	30	25	3	3	X			X	
570	Canary Island pine	<i>Pinus canariensis</i>	1	9.0	20	15	3	3	X			X	
571	Canary Island pine	<i>Pinus canariensis</i>	1	8.0	20	15	3	3	X			X	
572	Canary Island pine	<i>Pinus canariensis</i>	1	10.0	30	25	3	3	X			X	
573	Canary Island pine	<i>Pinus canariensis</i>	1	8.0	20	15	3	3	X			X	
574	Canary Island pine	<i>Pinus canariensis</i>	1	7.0	20	15	3	3	X			X	
575	Canary Island pine	<i>Pinus canariensis</i>	1	7.0	20	15	3	3	X			X	
576	Canary Island pine	<i>Pinus canariensis</i>	1	10.0	30	25	3	3	X			X	
577	Canary Island pine	<i>Pinus canariensis</i>	1	8.0	20	15	3	3	X			X	
578	Canary Island pine	<i>Pinus canariensis</i>	1	12.0	30	25	3	3	X			X	
579	Canary Island pine	<i>Pinus canariensis</i>	1	10.0	30	25	3	3	X			X	
580	Canary Island pine	<i>Pinus canariensis</i>	1	6.0	20	15	3	3	X			X	
581	Canary Island pine	<i>Pinus canariensis</i>	1	6.0	20	15	3	3	X			X	
582	Canary Island pine	<i>Pinus canariensis</i>	1	10.0	30	25	3	3	X			X	
583	African sumac	<i>Searsia lancea</i>	1	5.0	15	15	3	3	X			X	
584	African sumac	<i>Searsia lancea</i>	1	11.0	30	25	3	3	X			X	
585	African sumac	<i>Searsia lancea</i>	1	9.0	20	15	3	3	X			X	
586	African sumac	<i>Searsia lancea</i>	1	9.0	20	15	3	3	X			X	
587	African sumac	<i>Searsia lancea</i>	1	6.0	20	15	3	3	X			X	
588	African sumac	<i>Searsia lancea</i>	1	10.0	30	25	3	3	X			X	
589	African sumac	<i>Searsia lancea</i>	1	12.0	30	25	3	3	X			X	
590	southern magnolia	<i>Magnolia grandiflora</i>	1	5.6	12	15	3	3		X		X	
591	southern magnolia	<i>Magnolia grandiflora</i>	1	4.3	10	12	3	3		X		X	
592	Peruvian peppertree	<i>Schinus molle</i>	1	21.2	30	35	4	3		X	X		
593	Peruvian peppertree	<i>Schinus molle</i>	1	11.5	25	25	4	4		X		X	
594	goldenrain tree	<i>Koelreuteria paniculata</i>	1	9.5	20	25	4	4		X		X	
595	Peruvian peppertree	<i>Schinus molle</i>	1	12.0	30	25	4	4		X		X	
596	southern magnolia	<i>Magnolia grandiflora</i>	1	5.0	10	10	3	3		X		X	
597	southern magnolia	<i>Magnolia grandiflora</i>	1	6.5	15	10	3	3		X		X	
598	southern magnolia	<i>Magnolia grandiflora</i>	1	5.0	15	10	4	3		X		X	
599	jacaranda	<i>Jacaranda mimosifolia</i>	7	11, 8, 8, 7, 3, 2, 2	35	30	4	4		X		X	
600	southern magnolia	<i>Magnolia grandiflora</i>	1	4.8	10	10	4	4		X		X	
601	Peruvian peppertree	<i>Schinus molle</i>	1	12.0	30	25	4	4		X		X	

Aesthetics/Health Rating: 1=Very Poor, 2=Poor, 3=Fair, 4=Good, and 5=Excellent