

TABLE OF CONTENTS

A - Project Description

B - Air Quality

C - Grounds

D - Security

E - Stormwater Management

F - Water Use

G - Site Plans

PROJECT DESCRIPTION

CUA Investments, Inc. is seeking a Major Use Permit and an Early Activation of Use Permit from the County of Lake for a proposed commercial cannabis cultivation operation at 25252 and 25372 Jerusalem Grade near Middletown, California, on Lake County APNs 013-017-35, 36, 74, & 92 (Project Property). CUA Investments is also applying for a Use Permit and an Early Activation of Use Permit for Type 13 Cannabis Distributor Transport Only, Self-Distribution. CUA Investments' proposed cultivation operation will be composed of three 34,800 ft² A-Type 3 "Medium Outdoor" cultivation/canopy areas, two 160 ft² Harvest Storage Areas (metal shipping containers), a 120 ft² wooden Security Shed and a 120 ft² Pesticides & Agricultural Chemicals Storage Area (wooden shed). All water for the proposed cultivation operation will come from two existing onsite groundwater wells located at Latitude 38.82139° and Longitude -122.45250° and Latitude 38.82132° and Longitude -122.45750°. The Project Property has been enrolled for coverage under the State Water Resources Control Board's Cannabis General Order as a Tier 2 Low Risk Discharger since November 30th, 2018 (WDID: 5S17CC406359 and 5S17CC406509).

The 76-acre, four-parcel, Rural Lands-zone Project Property is located at the base of Bishop Mountain in eastern Lake County, and within the Upper Putah Creek watershed (HUC10) and the Hunting Creek sub-watershed (HUC12). Topography of the Project Property is a moderately-rolling terrain, that generally slopes from west to east, with elevations ranging from approximately 1,600 to 2,000 feet above mean sea level. Multiple ephemeral Class III watercourses begin on the Project Property and flow northeast into Jericho Creek. All disturbance associated with development of CUA Investments' proposed cultivation operation will occur more than 100 feet from all surface water bodies.

The Project Property is accessed via a shared private gravel access road off of Jerusalem Grade. The area of the proposed cultivation operation is accessed via a private gravel access road/driveway off of the previously mentioned shared private gravel access road. A proposed locking metal gate will control access to the private gravel access road/driveway and the area of the proposed cultivation operation, from the shared private gravel access road (main entrance). This gate will be closed and locked outside of core operating/business hours (8am to 6pm) and whenever CUA Investments personnel are not present.

The cultivation season for CUA Investments' proposed outdoor cannabis cultivation operation will begin on April 1st and end on November 15th of each year. CUA Investments' proposed cultivation areas will be enclosed with 6-foot tall galvanized woven wire fences, covered with privacy mesh where necessary to screen the cultivation areas from public view. The growing medium of CUA Investments' proposed outdoor cultivation/canopy areas will be an amended native soil mixture, with drip irrigation systems to conserve water resources. All cannabis waste generated from the proposed cultivation operation will be composted on-site. Composted cannabis waste will be stored in the designated composting area until it is incorporated into the soils of the cultivation area(s) as a soil amendment. Chemicals stored and used at/by CUA Investments' proposed cultivation operation include fertilizers/nutrients, pesticides, and

petroleum products (Agricultural Chemicals) and chemical sanitation products necessary to maintain a sterile work environment. All chemicals and tools will be securely stored inside the proposed Pesticides and Agricultural Chemicals Storage Area.

CUA Investments is seeking to obtain a Type 13 Cannabis Distributor Transport Only, Self-Distribution license, so that they may transport cannabis from their cultivation operation to licensed cannabis processing, distribution and manufacturing facilities throughout the State of California. CUA Investments will utilize an unmarked, registered, and insured enclosed trailer to transport/distribute cannabis from their operation. CUA Investments' distribution trailer will only travel from the Project Property to the premises of licensed cannabis processing, manufacturing and distribution facilities, and back to the Project Property. The trailer will be locked and secured whenever it is not being loaded or unloaded, and it will never be left unattended while transporting cannabis. EAFC will adhere to the reporting requirements of the California Cannabis Track-and-Trace system at all times, to record and report all cannabis transfers and movements.

Planting Timeline Schedule

If CUA Investments is able to obtain an Early Activation of Use Permit for their proposed outdoor cultivation operation prior to April 30th, 2020: they will begin preparing the proposed outdoor cultivation/canopy areas for planting on June 1st, 2020.

If CUA Investments is able to obtain a Use Permit for their proposed outdoor cultivation operation prior to April 30th, 2021: they will begin preparing the proposed outdoor cultivation/canopy areas for planting on May 1st, 2021.

AIR QUALITY

- (a) Intent: All cannabis permittees shall not degrade the County's air quality as determined by the Lake County Air Quality Management District (LCAQMD).
- (b) In this section, permittees shall identify any equipment or activity that may cause, or potentially cause the issuance of air contaminants including odor and shall identify measures to be taken to reduce, control or eliminate the issuance of air contaminants, including odors.
- (c) All cannabis permittees shall obtain an Authority to Construct permit, if necessary, pursuant to LCAQMD Rules and Regulations, prior to the construction of the facility described in the Property Management Plan.
- (d) All cannabis permittees shall obtain Authority to Construct Permit pursuant to LCAQMD Rules and Regulations, if applicable, to operate any article, machine, equipment or other contrivance which causes or may cause the issuance of an air contaminant.
- (e) All permittees shall maintain an Authority to Construct or Permit to Operate for the life of the project, until the operation is closed and equipment is removed.
- (f) The applicant shall prepare an odor response program that includes (but is not limited to):
 - a. Designating an individual(s) who is/are responsible for responding to odor complaints 24 hours per day/seven (7) days a week, including holidays.
 - b. Providing property owners and residents of property within a 1,000 foot radius of the cannabis facility, with the contact information of the individual responsible for responding to odor complaints.
 - c. Policies and procedures describing the actions to be taken when an odor complaint is received, including the training provided to the responsible party on how to respond to an odor complaint.
 - d. The description of potential mitigation methods to be implemented for reducing odors, including add-on air pollution control equipment.
 - e. Contingency measures to mitigate/curtail odor and other emissions in the event the methods described above are inadequate to fully prevent offsite nuisance conditions.

Air Quality Management Plan

Purpose and Overview

CUA is seeking a Major Use permit from the County of Lake for a proposed commercial cannabis cultivation operation at 25252, 25322, 25322, 25372, and 25392 Jerusalem Grade, 5 contiguous parcels near Middletown and Lower Lake, California, on Lake County APNs: 013-017- 35, 36, 42, 73, and 74 to conduct the following commercial cannabis activities and obtain the following commercial cannabis licenses: (4) A- Type 3 “Medium Outdoor” licenses and A-Type 13 Distributor Transport Only, Self-Distribution license. The proposed cultivation operation will be composed of a 176,640 ft² cultivation area, with a total canopy area of 174,240 ft² (4 Acres) and a 40’ x 60’ processing facility. The proposed outdoor cultivation/canopy area will be enclosed with a 6-foot tall galvanized woven wire fence, covered with privacy screen where necessary to screen the cultivation area from public view. The growing medium of the proposed outdoor cultivation area will be an above grade imported organic soil mixture in planting beds utilizing drip and micro-spray irrigation systems.

This Air Quality Management Plan (AQMP) is designed to promote the health, safety, welfare and environmental quality of the community, operational staff, and the Project Property. In-line with the directives of the Lake County Air Quality Management District, this AQMP includes measures to monitor and evaluate the performance of the plan, as well as ensure that all data and information is reported to Lake County and the proper local agencies. This AQMP identifies equipment and activities that may cause odor, contaminates, or other air quality hazards, and measures that operational staff will be required to follow to mitigate/minimize the amount of air pollution and particulates generated from the proposed cultivation operation. This AQMP also includes an Odor Response Program that establishes responsible parties and procedures for operational staff to follow in the event of an odor complaint.

Equipment or Activities that May or Potentially Cause the Issuance of Air Contaminants

The following sources are anticipated to be the most significant emitters of odor, air pollutants, and particles from the proposed cultivation operation. However, no single source or combined sources are anticipated to be harmful or detrimental to neighboring residences or the community of Lake County.

Gasoline Powered Generator: The proposed cannabis cultivation operation will be connected to the electrical grid. All power will come from PG&E with a gasoline powered generator to be used as backup. CUA uses a lightweight, low noise, compact, and fuel efficient Honda Generator as their backup power source, to supply power when it is not available from PG&E.

Gasoline and Diesel Powered Equipment: The proposed cultivation operation will generate small amounts of carbon dioxide from the operation of small gasoline engines (tillers, weed eaters, lawnmowers, etc...), a utility tractor (diesel engine), and from vehicular traffic associated with

staff commuting. The generation of carbon dioxide is partially offset by the cultivation of plants, which remove carbon dioxide in the air for photosynthesis.

Fugitive Dust: The proposed cultivation operation may generate fugitive dust emissions through ground-disturbing activities, uncovered soil or compost piles, and vehicle or truck trips on unpaved roads. Fugitive dust will be controlled by wetting soils with a mobile water tank and hose, or by delaying ground disturbing activities until site conditions are not windy, and by eliminating soil stockpiles. Fugitive dust may also be generated temporarily during the construction period.

Odors: Cannabis cultivation can generate objectionable odors, particularly when the plants are mature/flowering in the cultivation area(s) or when being processed (drying, curing, trimming, and grading) after harvest. No significant odor impacts are anticipated from the proposed cultivation, due to CUA's proposed odor control equipment and practices, and the generous setbacks provided from public roads, property lines, and neighboring residences/outdoor activity areas. The ventilation system of the proposed Processing Building, in which the processing of raw cannabis plant material from the proposed mixed light cultivation area will occur, will be equipped with carbon filters/air scrubbers to mitigate odors emanating from the building. Accurate records of repairs and replacements to the ventilation and odor mitigation system will be maintained by CUA's managerial staff, and those records will be retained onsite for at least three years.

Erosion Control Measures during grading and construction:

- Fugitive dust will be controlled by wetting soils with a mobile water tank and hose, or by delaying ground disturbing activities until site conditions are not windy, and by eliminating soil stockpiles. Also, any dirt access will be layered with 6'' gravel/crushed rock prior to any construction to mitigate any air quality impacts from dust/debris.
- Hazardous spills:
 - All purchased products including; chemicals, fertilizers/nutrients, pesticides, petroleum products and sanitation products will all be kept in their manufactures original containers/packaging. All fertilizers/nutrients and pesticides, when not in use, are stored in their manufacturer's original containers/packaging and undercover inside the secure proposed Processing Building. Petroleum products are stored under cover and in State of California-approved containers with secondary containment and will be stored within the Processing Facility. Sanitation products are stored in their manufacturer's original containers/packaging within a secure cabinet inside the Processing Facility. Spill containment and cleanup equipment will be maintained within the secure Processing Facility. All employees will be trained to properly use all equipment according to the manufacturer's procedures. All pouring activities of any products

will take place on gravel and within a secondary containment to reduce chances of spills.

- Wildfire prevention will be achieved by maintaining the project grounds. The entire vegetative area surrounding the cultivation area will be well trimmed in order to reduce fire fuel load. All gasoline and diesel-powered equipment will only be used by trained personnel and will be turned off and stored indoors when not in use. Any equipment that has the potential to cause a fire will be used when 2 or more individuals are actively present to prevent any accidents.
- Noise during grading and construction will be inevitable however, all grading and construction will only take place during regular business hours: Monday through Saturday: 9:00 a.m. - 7:00 p.m. and Sunday: 12:00 p.m. - 5:00 p.m. Also, no idling will occur, and all equipment will be turned off when not in use.

At this time there is no proposed demolition or renovations of any building, however if proposed a Certified Asbestos Consultant will be contacted for inspections.

Odor Response Program

A Community Liaison/Emergency Contact will be made available to Lake County Officials/Staff and the Lake County Sheriff's Office at all times to address any needs or issues that may arise. The Community Liaison/Emergency Contact will be responsible for responding to odor complaints 24 hours a day, seven days a week, including holidays. CUA will provide the name, cell phone number, and email address of the Community Liaison/Emergency Contact to all interested County Departments, Law Enforcement Officials, and neighboring property owners and residents. CUA will encourage neighboring residents to contact the Community Liaison/Emergency Contact to resolve any operating problems before contacting County Officials/Staff.

When an odor complaint is received, the Community Liaison/Emergency Contact will immediately take action to determine the source of the odor for which the complaint was received (cultivation area, processing facility, or other). Then mitigation methods will be immediately implemented to reduce/eliminate odors from emanating from the source. Depending on the source, mitigation measures include erecting windscreens, servicing and/or upgrading existing odor control filtration and ventilation systems, and/or the installation of additional air pollution/odor control equipment.

Community Liaison/Emergency Contact Information

The Community Liaison/Emergency Contact for CUA's cultivation operation is Mr. Justin Hammer. Mr. Hammer's cell phone number is (925) 886-9272. All residences within 1,000 feet of the property boundaries will receive this contact information directly.

Grounds

Intent: To describe the grounds of the commercial cannabis cultivation site to ensure compliance with the use permit, protect the public health, safety and welfare, as well as the natural environment of Lake County.

This section shall include the following:

- a. The permittee shall establish and implement written procedures to ensure that the grounds of the premises controlled by the permittee are kept in a condition that prevents the contamination of components and cannabis products. The methods for adequate maintenance of the grounds shall include at minimum:
 - i. The proper storage of equipment, removal of litter and waste, and cutting of weeds or grass so that the premises shall not constitute an attractant, breeding place, or harborage for pests.
 - ii. The proper maintenance of roads, yards, and parking lots so that these areas shall not constitute a source of contamination in areas where cannabis products are handled or transported.
 - iii. The provision of adequate draining areas in order to prevent contamination by seepage, foot-borne filth, or the breeding of pests due to unsanitary conditions.
- b. The provision and maintenance of waste treatment systems so as to prevent contamination in areas where cannabis products may be exposed to such a system's waste or waste by-products.

If the lot of record is bordered by grounds outside the applicant's control that are not maintained in the manner described in subsections (i) through (iv) of this section, inspection, extermination, and other reasonable care shall be exercised within the lot of record in order to eliminate any pests, dirt, and/or filth that pose a source of cannabis product contamination.
- c. Any other information as may be requested by the Director and/or by the Planning Commission.

Grounds

Purpose and Overview

CUA is seeking a Major Use permit from the County of Lake for a proposed commercial cannabis cultivation operation at 25252, 25322, 25322, 25372, and 25392 Jerusalem Grade, 5 contiguous parcels near Middletown and Lower Lake, California, on Lake County APNs: 013-017- 35, 36, 42, 73, and 74 to conduct the following commercial cannabis activities and obtain the following commercial cannabis licenses: (4) A- Type 3 “Medium Outdoor” licenses and A-Type 13 Distributor Transport Only, Self-Distribution license. The proposed cultivation operation will be composed of a 176,640 ft² cultivation area, with a total canopy area of 174,240 ft² (4 Acres) and a 40' x 60' processing facility. The proposed outdoor cultivation/canopy area will be enclosed with a 6-foot tall galvanized woven wire fence, covered with privacy screen where necessary to screen the cultivation area from public view. The growing medium of the proposed outdoor cultivation area will be an above grade imported organic soil mixture in planting beds utilizing drip and micro-spray irrigation systems.

The Grounds section is designed to outline the operating procedures for the proposed commercial cannabis cultivation operations to ensure compliance with the use permit(s), protect the public health, safety and welfare, as well as the natural environment of Lake County. This section provides information on adequate maintenance of the property, roads, waste, drainage, as well as the storage of chemicals stored and used onsite.

Chemicals Storage and Effluent

Chemicals stored and used at/by CUA's cultivation operation include fertilizers/nutrients, pesticides, and petroleum products (Agricultural Chemicals) and chemical sanitation products necessary to maintain a sterile work environment inside the Processing Facility. All fertilizers/nutrients and pesticides, when not in use, are stored in their manufacturer's original containers/packaging and undercover inside the secure proposed processing facility. Petroleum products are stored at least 100 feet from surface water bodies, under cover and in State of California-approved containers with secondary containment and separate from pesticides and fertilizers. Sanitation products are stored in their manufacturer's original containers/packaging within a secure cabinet inside the Processing Facility. Spill containment and cleanup equipment will be maintained within the secure Processing Facility. No effluent is expected to be produced by the proposed cultivation operation.

Solid Waste Overview

The types of solid waste that will be generated from the proposed commercial cannabis cultivation operation include gardening materials and wastes (such as used plastic seedling pots and spent plastic fertilizer/pesticide bags and bottles) and general litter from staff/personnel. All solid waste will be stored in bins with secure fitting lids, located directly adjacent to the proposed cultivation area(s) and proposed Cannabis Drying & Storage Facility. At no time should the bins be filled to a point that their lids cannot fit securely. Solid waste from the bins

will be deposited into a trailer (“dump trailer”), then hauled away to a Lake County Integrated Waste Management facility, at least every seven (7) days/weekly during the cultivation season. The closest Lake County Integrated Waste Management facility to the proposed cultivation operation is the Eastlake Landfill. Most, if not all, of the solid waste generated by proposed commercial cannabis cultivation operation can and will be deposited there.

Site Maintenance

When not in use, all equipment is stored in their proper designated area upon completion of the task for which the equipment was needed. Any refuse created during the work day is placed in the proper waste disposal receptacle at the end of each shift, or at a minimum upon completion of the task assigned. Any refuse which poses a risk for contamination or personal injury is disposed of immediately. The Project Property is mowed and trimmed regularly around the cultivation operations to ensure safe and sanitary working conditions.

Access roads and parking areas will be graveled to prevent the generation of fugitive dust, and vegetative ground cover will be preserved throughout the entire site to filter and infiltrate stormwater runoff from the access roads, parking areas, and the proposed cultivation operation. A portable restroom facility will be available onsite until restroom additions are made to the proposed Processing Facility.

SECURITY

To minimize criminal activity, provide for safe and secure working environments, protect private property, and to prevent damage to the environment. The Applicant shall provide adequate security on the premises, as approved by the Sheriff and pursuant to this section, including lighting and alarms, to ensure the safety of persons and to protect the premises from theft.

This section shall include at a minimum:

- a. A description of the security measures to be taken to:
 1. Prevent access to the cultivation site by unauthorized personnel and protect the physical safety of employees. This includes, but is not limited to:
 - i. Establishing physical barriers to secure perimeter access and all points of entry (such as locking primary entrances with commercial- grade, nonresidential door locks, or providing fencing around the grounds, driveway, and any secondary entrances including windows, roofs, or ventilation systems);
 - ii. Installing a security alarm system to notify and record incident(s) where physical barriers have been breached;
 - iii. Establishing an identification and sign-in/sign-out procedure for authorized personnel, suppliers, and/or visitors;
 - iv. Maintaining the premises such that visibility and security monitoring of the premises is possible; and
 - v. Establishing procedures for the investigation of suspicious activities.
 2. Prevent theft or loss of cannabis and cannabis products. This includes but is not limited to:
 - i. Establishing an inventory system to track cannabis material and the personnel responsible for processing it throughout the cultivation process;
 - ii. Limiting access of personnel within the premises to those areas necessary to complete job duties, and to those time-frames specifically scheduled for completion of job duties;
 - iii. Supervising tasks or processes with high potential for diversion (including the loading and unloading of cannabis transportation vehicles); and
 - iv. Providing designated areas in which personnel may store and access personal items.
 3. Identification of emergency contact(s) that is/are available 24 hours/seven (7) days a week including holidays. The plan shall include the name, phone number and facsimile number or email address of an individual working on the commercial cultivation premises, to whom notice of problems associated with the operation of the commercial cultivation establishment can be provided. The commercial cultivation establishment shall keep this information current at all times. The applicant shall make every good faith effort to encourage neighborhood residents to call this designated person to resolve operating problems, if any, before any calls or complaints are made to the County.
 4. The permittee shall maintain a record of all complaints and resolution of complaints and provide a tally and summary of issues in the annual Performance Review Report.
 5. A description of fences, location of access points, and how access is controlled.

6. Video Surveillance.

- i. At a minimum, permitted premises shall have a complete digital video surveillance system with a minimum camera resolution of 1080 pixel. The video surveillance system shall be capable of recording all predetermined surveillance areas in any lighting conditions.
- ii. The video surveillance system shall be capable of supporting remote access by the permittee.
- iii. To the extent reasonably possible, all video surveillance cameras shall be installed in a manner that prevents intentional obstruction, tampering with, and/or disabling
- iv. Areas that shall be recorded on the video surveillance system include, but are not limited to, the following:
 - a. The perimeter of the cannabis cultivation site and cannabis nursery,
 - b. Areas where cannabis or cannabis products are weighed, packed, stored, quarantined, loaded and/or unloaded for transportation, prepared, or moved within the premises;
 - c. Areas where cannabis is destroyed;
 - d. Limited-access areas;
 - e. Security rooms;
 - f. Areas containing surveillance-system storage devices, in which case, at least one camera shall record the access points to such an area; and
 - g. The interior and exterior of all entrances and exits to the cannabis cultivation sites and cannabis nursery including all buildings where cannabis or cannabis products are weighed, packed, stored, quarantined, loaded and/or unloaded for transportation, prepared, or moved within the premises.
- v. The surveillance system shall operate continuously 24 hours per day and at a minimum of 30 frames per second.
- vi. All exterior cameras shall be waterproof, I-66 minimum.
- vii. All interior cameras shall be moisture proof.
- viii. Cameras shall be color capable.
- ix. Video management software shall be capable of integrating cameras with door alarms.
- x. Video recordings shall be digital.
- xi. Thermal technology shall be used for perimeter fencing.
- xii. All cameras shall include motion sensors that activates the camera when motion is detected.
- xiii. In areas with inadequate lighting for the cameras being used, sufficient lighting shall be provided to illuminate the camera's field of vision.
- xiv. All recording shall be located in secure rooms or areas of the premises in an access and environment-controlled environment which is separate from the room where the computer and monitoring equipment is located.

- xv. All surveillance recordings shall be kept on the applicant's recording device or other approved location for a minimum of 30 days.
- xvi. All video surveillance recordings are subject to inspection by the Department and shall be copied and sent, or otherwise provided, to the Department upon request.
- xvii. The video recordings shall display the current date and time of recorded events. Time is to be measured in accordance with the U.S. National Institute Standards and Technology standards. The displayed date and time shall not significantly obstruct the view of recorded images

7. Fences

- i. Any commercial cannabis cultivation site shall be enclosed by a fence. The fence shall include, at a minimum, the following: Posts set into the ground. The posts may be steel tubing, timber or concrete and may be driven into the 27-136 ground or set in concrete. End, corner or gate posts, commonly referred to as "terminal posts", must be set in concrete footing or otherwise anchored to prevent leaning under the tension of a stretched fence. Posts set between the terminal posts shall be set at intervals not to exceed 10 feet. A top horizontal rail is required between all posts. The fence shall be attached to the posts and top horizontal rail.
- ii. No barbed wire, razor wire or similar design shall be used.
- iii. The cultivation area shall be screened from public view. Methods of screening may include, but are not limited to, topographic barriers, vegetation, or solid (opaque) fences.

Security Management Plan

Purpose and Overview

CUA is seeking a Major Use permit from the County of Lake for a proposed commercial cannabis cultivation operation at 25252, 25322, 25322, 25372, and 25392 Jerusalem Grade, 5 contiguous parcels near Middletown and Lower Lake, California, on Lake County APNs: 013-017- 35, 36, 42, 73, and 74 to conduct the following commercial cannabis activities and obtain the following commercial cannabis licenses: (4) A- Type 3 “Medium Outdoor” licenses and A-Type 13 Distributor Transport Only, Self-Distribution license. The proposed cultivation operation will be composed of a 176,640 ft² cultivation area, with a total canopy area of 174,240 ft² (4 Acres) and a 40' x 60' processing facility. The proposed outdoor cultivation/canopy area will be enclosed with a 6-foot tall galvanized woven wire fence, covered with privacy screen where necessary to screen the cultivation area from public view. The growing medium of the proposed outdoor cultivation area will be an above grade imported organic soil mixture in planting beds utilizing drip and micro-spray irrigation systems.

The purpose of this Security Management Plan (SMP) is to minimize criminal activity, provide for safe and secure working environments, protect private property and prevent damage to the environment. This SMP includes a description of the security measures that are/will be implemented at the existing/proposed cultivation operation to prevent unauthorized access and theft or diversion of cannabis, a description of the proposed video surveillance system, and protocols that CUA follows to ensure overall site security. This SMP is also designed to be compliant with the Emergency Regulations for Cannabis Cultivation, authored by CDFA's CalCannabis Licensing programs, as well as the regulations established by the California Department of Public Health for state-licensed cannabis businesses.

Secured Entry and Access

The proposed property is accessed from the north side of the parcel, via a private dirt road that connects directly to Jerusalem Grade Road. The area of the proposed cultivation operation is accessed via a private gravel access road. A metal gate across the private gravel access road/driveway (main entrance) controls access to the project property and the area of the proposed cultivation operation. The gate will be closed and locked outside of core operating/business hours (8am to 6pm) and whenever CUA personnel are not present. The gate will be installed with a commercial grade padlock and a knock box to allow 24/7 access for emergency services.

6-foot woven galvanized wire fences will be erected around the proposed cultivation area(s). Privacy Screen/Cloth will be installed on the fences where necessary to screen the cultivation area from public view. Posts will be set into the ground at not more than 10-foot intervals, and terminal posts will be set into concrete footings. Secured entry and access to the cultivation area(s) will be controlled via locking gates that will be locked whenever CUA personnel are not present. All gates will be secured with heavy duty chains and commercial grade padlocks. Only approved CUA managerial staff are able to unlock the gates on the Project Property.

A 100-foot defensible space (vegetation management) will be established and maintained around the proposed cultivation operation for fire protection and to provide for visibility and security monitoring. Motion-sensing alarms have been installed at the main entrance to the Project Parcel, to alert personnel when someone/something has entered onto the premises. Motion-sensing security lights will be installed on all external corners of the proposed cultivation area(s), and at the main entrance to the Project Parcel. All lighting will be fully shielded, downward casting and will not spill over onto other properties or the night sky.

Personnel are instructed to notify CUA managerial staff immediately if/when suspicious activity is detected. CUA managerial staff will investigate the suspicious activity for potential threats, issues, or concerns. CUA will contact the Lake County Sheriff's Office immediately if/when a threat is detected. When a visitor arrives at the existing/proposed cultivation operation via the main entrance during core operating/business hours, they will be immediately greeted by a member of CUA's managerial staff. The staff member will verify the visitor's identification and appropriate documentation/credentials. They will then be assigned an escort to show the visitor to the appropriate area(s), in accordance to their approved itinerary. No visitors will ever be left unattended.

Diversion/Theft Prevention

All CUA personnel are required to undergo a criminal background check. Visitors and personnel are required to sign-in and sign-out each day, and record the areas in which they worked and the tasks they were assigned. CUA will adhere to the inventory tracking and recording requirements of the California Cannabis Track-and-Trace (CCTT) system. All personnel will be trained in the requirements of the CCTT system, and all cannabis transfers/movement will be reported through the CCTT system. At least two members of CUA's managerial staff will be designated track-and-trace system administrators. A track-and-trace system administrator will supervise all tasks with high potential for diversion/theft, and will document which personnel took part in the task(s). In the event of any diversion/theft, law enforcement and the appropriate licensing authority will be notified within 24 hours of discovery.

Community Liaison and Emergency Contact

A Community Liaison/Emergency Contact will be made available to Lake County Officials/Staff and the Lake County Sheriff's Office at all times to address any needs or issues that may arise. CUA will provide the name, cell phone number, and email address of the Community Liaison/Emergency Contact to all interested County Departments, Law Enforcement Officials, and neighboring property owners and residents. CUA will encourage neighboring residents to contact the Community Liaison/Emergency Contact to resolve any problems before contacting County Officials. When a complaint is received, the Community Liaison/Emergency Contact will document the complainant and the reason for the complaint, then take action to resolve the issue (see the Odor Response Program in the Air Quality section of this Property Management Plan for odor related complaints/issues). A tally and summary of complaints/issues will be provided in CUA's annual Performance Review Report.

The Community Liaison/Emergency Contact for CUA's cultivation operation is Mr. Justin Hammer. Mr. Hammer's cell phone number is (925) 886-9272. All residences within 1,000 feet of the property boundaries will receive this contact information directly.

Video Surveillance

CUA uses a closed-circuit television (CCTV) system with a minimum camera resolution of 1080p at a minimum of 30 frames per second to record activity in all sensitive areas. All cameras are color capable. All exterior cameras are at minimum I-66 waterproof and all interior cameras are moisture proof. Cameras monitoring the perimeter of the cultivation/canopy areas are equipped with thermal technology. The CCTV system feeds into a monitoring and recording station in the Processing Facility, where video from the CCTV system is digitally recorded. Video management software of the monitoring and recording station is capable of integrating cameras of the CCTV system with door alarms, and will be equipped with a failure notification system that immediately notifies CUA's managerial staff of any interruptions or failures. All cameras of the CCTV system operate continuously 24 hours a day, 7 days a week, recording current date and time on the feed. All recordings are kept a minimum of 90 days, and 7 years for any corresponding reported incidents caught on tape. The security room will remain locked at all times and only be accessible by CUA managerial staff.

Proposed camera placements can be found on the accompanying Security Site Plan. Areas that will be covered by the CCTV system include:

- Entryways to the property, cultivation area(s), residential/office building, and shop/processing facility,
- Perimeter of the cultivation/canopy areas,
- The monitoring and recording station and security room (within the Processing Facility),
- Interior of the Processing Facility.

STORMWATER MANAGEMENT

Intent: To protect the water quality of surface water and stormwater management systems managed by Lake County and to evaluate the impact on downstream property owners. All permittees shall manage stormwater runoff to protect downstream receiving water bodies from water quality degradation.

This section shall include at a minimum:

- a. Identification of any Lake County maintained drainage or conveyance system that the stormwater is discharged into and documentation that the stormwater discharge is in compliance with the design parameters of those structures;
- b. Identification of any public roads and bridges that are downstream of the discharge point and documentation that the stormwater discharge is in compliance with the design parameters of any such bridges;
- c. Documentation that the discharge of stormwater from the site will not increase the volume of water that historically has flow onto adjacent properties;
- d. Documentation that the discharge of stormwater will not increase flood elevations downstream of the discharge point;
- e. Documentation that the discharge of stormwater will not degrade water quality of any water body;
- f. Documentation of compliance with the requirements of Chapter 29, Storm Water Management Ordinance of the Lake County Ordinance Code;
- g. Describe the proposed grading of the property;
- h. Describe the storm water management system;
- i. Describe the best management practices (BMPs) that will be used during construction and those that will be used post-construction. Post-construction BMPs shall be maintained through the life of the permit; and
- j. Describe what parameters will be monitored and the methodology of the monitoring program.
- k. Cannabis Vegetative Material Waste Management

The cannabis vegetative material waste management section shall include:

1. Provide an estimate of the type and amount of cannabis vegetative waste that will be generated on an annual basis;
2. Describe how the permittee will minimize cannabis vegetative waste generation; 27-138
3. Describe how solid waste will be disposed; and
4. Describe the methodology on how the amount of cannabis vegetative waste that is generated on the site, the amount that is recycled, and the amount and where cannabis vegetative waste is disposed of is measured.

- l. Growing Medium Management

The cannabis vegetative material waste management section shall include:

1. Provide an estimate of the type and amount of new growing medium that will be used and amount of growing medium will be disposed of on an annual basis;

2. Describe how the permittee will minimize growing medium waste generation;
3. Describe any non-organic content in the growing medium used (such as vermiculite, silica gel, or other non-organic additives;
4. Describe how growing medium waste will be disposed;
5. Describe the methodology on how the amount of growing medium waste that is generated on the site, the amount that is recycled, and the amount and where growing medium waste is disposed of, is measured.

Storm Water Management Plan

Purpose and Overview

CUA is seeking a Major Use permit from the County of Lake for a proposed commercial cannabis cultivation operation at 25252, 25322, 25322, 25372, and 25392 Jerusalem Grade, 5 contiguous parcels near Middletown and Lower Lake, California, on Lake County APNs: 013-017- 35, 36, 42, 73, and 74 to conduct the following commercial cannabis activities and obtain the following commercial cannabis licenses: (4) A- Type 3 “Medium Outdoor” licenses and A-Type 13 Distributor Transport Only, Self-Distribution license. The proposed cultivation operation will be composed of a 176,640 ft² cultivation area, with a total canopy area of 174,240 ft² (4 Acres) and a 40’ x 60’ processing facility. The proposed outdoor cultivation/canopy area will be enclosed with a 6-foot tall galvanized woven wire fence, covered with privacy screen where necessary to screen the cultivation area from public view. The growing medium of the proposed outdoor cultivation area will be an above grade imported organic soil mixture in planting beds utilizing drip and micro-spray irrigation systems.

The purpose of this Storm Water Management Plan is to protect the water quality of the surface water and stormwater management systems managed by Lake County. CUA focuses on low impact development (LID) and “green” stormwater management infrastructure to achieve permanent stabilization post site development as quickly as possible. LID practices utilizing “green” infrastructure will manage stormwater by minimizing impervious surfaces, maintaining, preserving, and enhancing existing vegetation, and by using natural systems to filter and infiltrate stormwater into the ground. LID with “green” stormwater infrastructure is cost competitive with traditional stormwater management infrastructure/practices, while providing numerous other long-term benefits, such as improved water quality, ecosystem enhancement, and preserved/improved aesthetics.

Stormwater Management Measures

The proposed cultivation area(s) will increase the impervious surface area of the Project Parcel by 2,400 ft², which equates to less than .0008% of the Project Parcel. CUA proposes to increase the impervious surface area of the Project Parcel through the proposed installation of a 2,400 ft² processing facility. All structures will be located more than 100 feet from surface water bodies, and stormwater runoff from the structures will be discharged to the well-vegetated buffers surrounding the proposed cultivation operation, to filter pollutants and to promote stormwater retention and infiltration.

The proposed outdoor canopy area will not increase the impervious surface area of the Project Parcel, however with the addition of a rain catchment system and a natural vegetative surround the volume of runoff from the Project Site should not increase. Well-vegetated buffers (minimum 100 feet) will be maintained around the proposed cultivation areas to filter and/or remove any sediment, nutrients, and/or pesticides mobilized by stormwater runoff, and prevent those pollutants from reaching nearby surface water bodies.

Erosion and Sediment Control Measures

Well-vegetated buffers will be maintained around the proposed cultivation operation. Established vegetation within and around the proposed cultivation operation will be maintained/protected to the extent possible, as a permanent erosion and sediment control measures. A native grass seed mixture and certified weed-free straw mulch will be applied to all areas of the exposed soil prior to November 15th of each year at a rate of two tons per acre, until permanent stabilization has been achieved. Straw wattles will be installed and maintained throughout the proposed cultivation operation, until permanent stabilization has been achieved. If areas of concentrated stormwater runoff begin to develop, additional erosion and sediment control measures will be implemented to protect those areas and their outfalls. CUA's Site Manager will conduct monthly monitoring inspections to confirm that this operation is in compliance with California Water Code.

During Construction these BMP's will be implemented and maintained throughout the life of the project:

- Straw wattles will be installed and maintained throughout the entire life of the proposed cultivation operation around the cultivation site.
- Piled topsoil that is exposed will be covered with a tarp while not in use to maintain sediment control and reduce dust impacts.
- Gravel will be placed along all access roads to reduce exposed dirt.

Regulatory Compliance

The Project Property is enrolled for coverage under the State Water Resources Control Board's Cannabis General Order R5-2015-0113 (General Order) since November 30th, 2018 (WDID: 5S17CC406359 and WDID: 5S17CC406509).

The stormwater management measures outlined above meet or exceed the requirements of the Lake County StormWater Management Ordinance (Chapter 29 of the Lake County Ordinance Code). Stormwater runoff from the proposed cultivation operation will not discharge into any Lake County maintained drainage or conveyance system, and there are no public bridges or culverted watercourse crossings downstream from the proposed cultivation operation. Development of CUA's proposed cultivation operation, with the implementation of the LID practices and erosion and sediment control measures outlined above, has not and will not increase the volume of stormwater discharges from the Project Property onto adjacent properties or flood elevations downstream.

Monitoring and Reporting Program

The following are the Monitoring and Reporting Requirements for CUA's proposed cannabis cultivation operation from the Cannabis General Order:

- Winterization Measures Implementation
- Tier Status Confirmation
- Third Party Identification (if applicable)

- Nitrogen Application (Monthly and Total Annual)

An Annual Report shall be submitted to the State Water Quality Control Board by March 1st of each year. The Annual Report shall include the following:

1. Facility Status, Site Maintenance Status, and Storm Water Runoff Monitoring.
2. The name and contact information of the person responsible for operation, maintenance, and monitoring.

A letter transmitting the annual report shall accompany each report. The letter shall summarize the number and severity of violations found during the reporting period, and actions taken or planned to correct the violations and prevent future violations. The transmittal letter shall contain the following penalty of perjury statement and shall be signed by the Discharger or the Discharger's authorized agent:

"I certify under penalty of law that I have personally examined and am familiar with the information submitted in this document and all attachments and that, based on my inquiry of those individuals immediately responsible for obtaining the information, I believe that the information is true, accurate, and complete. I am aware that there are significant penalties for submitting false information, including the possibility of fine and imprisonment."

CUA will adhere to these monitoring requirements to maintain compliance with the Cannabis General Order, and will be happy to provide a copy of their Annual Monitoring Report to Lake County Officials if requested.

Cannabis Vegetative Material Waste Management

Cannabis Waste Overview

“Cannabis waste” is an organic waste, as defined in Section 42649.8(c) of the Public Resources Code. Anticipated cannabis waste generated from the proposed cannabis cultivation operation is limited to cannabis plant stems. It is anticipated that all other parts of cannabis plants cultivated at this site will be transferred to a State of California-licensed Distributor for distribution to State of California-licensed Processors, Manufacturers, and Retailers. The proposed cannabis cultivation operation is anticipated to generate less than 200 pounds of dried cannabis waste each year.

Cannabis Waste Composting

All cannabis waste generated from the proposed cultivation operation will be composted on-site and in compliance with Title 14 of the California Code of Regulations at Division 7, Chapter 3.1. Cannabis waste will be stored/composted in the designated composting area of the proposed commercial cannabis cultivation operation, until it is incorporated into the soils of the cultivation areas as an organic soil amendment.

Cannabis Waste Records/Documentation

Cannabis waste generated from the proposed cannabis cultivation operation will be identified, weighed, and tracked while onsite. All required information pertaining to cannabis waste will be entered into the State of California Cannabis Track-and-Trace (CCTT) system. CUA will maintain accurate and comprehensive records regarding cannabis waste generation that will account for, reconcile, and evidence all activity related to the generation or disposition of cannabis waste. All records will be kept on-site for seven (7) years and will be made available during inspections.

Growing Medium Management

Growing Medium Overview

The growing medium of the proposed cannabis cultivation area(s) will be an above grade organic soil mixture in fabric pots. Each year the organic soil mixture of the proposed cultivation area(s) will be amended with composted cannabis waste/plant material and reused. Only low salt fertilizers will be used by the proposed cultivation operation, so that salts do not accumulate within the organic soil mixture of the proposed cultivation area(s), rendering the organic soil mixture unusable.

Growing Medium Waste

Ideally, the organic soil mixture of the cultivation area will be amended and reused each year/cultivation season. Any “spent” or compromised soil media (soil media that cannot or should not be amended and reused to cultivate cannabis) will be utilized onsite to cultivate fragrant flowering and herb plants (please see the Air Quality Management Plan/section of this Property Management Plan for more information on the cultivation of fragrant flowering and herb plants). In the event of a root and/or soil born pest infestation, the infested soil will be removed from the cultivation area, quarantined and treated with a pesticide that targets the infestation and that is approved for use in cannabis cultivation by the California Department of Food and Agriculture and/or California Department of Pesticide Regulation, then incorporated with compost in the designated composting area. After composting, the treated soil will be reintroduced into the fabric pots of the proposed cultivation area(s) or used as a growing medium for the fragrant flowering and herb plants that are to be planted around the cultivation operation.

WATER USE

Intent: To conserve the County's water resources by minimizing the use of water.

- a) Intent: To conserve the County's water resources by minimizing the use of water.
- b) All permitted activities shall have a legal water source on the premises, and all local, state, and federal permits required to utilize the water source. If the permitted activity utilizes a shared source of water from another site, such source shall be a legal source, have all local, state, and federal permits required to utilize the water source, and have a written agreement between the property owner of the site where the source is located and the permitted activity agreeing to the use of the water source and all terms and conditions of that use.
- c) Permittees shall not engage in unlawful or unpermitted drawing of surface water.
- d) The use of water provided by a public water supply, unlawful water diversions, transported by a water hauler, bottled water, a water-vending machine, or a retail water facility is prohibited.
- e) Where a well is used, the well must be located on the premises, an adjacent parcel or piped through a dedicated easement. The production well shall have a meter to measure the amount of water pumped. The production wells shall have continuous water level monitors. The methodology of the monitoring program shall be described. A monitoring well of equal depth within the cone of influence of the production well may be substituted for the water level monitoring of the production well. The monitoring wells shall be constructed and monitoring begun at least three months prior to the use of the supply well. An applicant shall maintain a record of all data collected and shall provide a report of the data collected to the County annually.
- f) Water may be supplied by a licensed retail water supplier, as defined in Section 13575 of the Water Code, on an emergency basis. The application shall notify the Department within 7 days of the emergency and provide the following information:
 - a. A description of the emergency.
 - b. Identification of the retail water supplier including license number.
 - c. The volume of water supplied.
 - d. Actions taken to prevent the emergency in the future.
- g) All permittees shall prepare a Water Use/water availability analysis prepared by qualified individual. Said plan shall:
 - a. Identify the source of water, including location, capacity, and documentation that it is a legal source.
 - b. Describe the proposed irrigation system and methodology.
 - c. Describe the amount of water projected to be used on a monthly basis for irrigation and separately for all other uses of water and the amount of water to be withdrawn from each source of water on a monthly basis.

Water Use Management Plan

Purpose and Overview

CUA is seeking a Major Use permit from the County of Lake for a proposed commercial cannabis cultivation operation at 25252, 25322, 25322, 25372, and 25392 Jerusalem Grade, 5 contiguous parcels near Middletown and Lower Lake, California, on Lake County APNs: 013-017- 35, 36, 42, 73, and 74 to conduct the following commercial cannabis activities and obtain the following commercial cannabis licenses: (4) A- Type 3 “Medium Outdoor” licenses and A-Type 13 Distributor Transport Only, Self-Distribution license. The proposed cultivation operation will be composed of a 176,640 ft² cultivation area, with a total canopy area of 174,240 ft² (4 Acres) and a 40’ x 60’ processing facility. The proposed outdoor cultivation/canopy area will be enclosed with a 6-foot tall galvanized woven wire fence, covered with privacy screen where necessary to screen the cultivation area from public view. The growing medium of the proposed outdoor cultivation area will be an above grade imported organic soil mixture in planting beds utilizing drip and micro-spray irrigation systems.

This Water Use Management Plan is designed to conserve Lake County’s water resources and to ensure that the proposed cultivation operation’s water use practices are in compliance with applicable County, State, and Federal regulations at all times. This Water Use Management Plan focuses on designing a water efficient delivery system and irrigation practices, and the appropriate and accurate monitoring and reporting of water use practices.

Water Sources

Water is provided to CUA’s proposed cultivation operation from a groundwater well, located at Latitude 38.491808° and Longitude -122.272733°. See attached well permit from Environmental Health for further details.

Irrigation

From the CalCannabis Cultivation Licensing Program’s Final Programmatic Environmental Impact Report (PEIR):

“According to Hammon et al. (2015), water use requirements for outdoor cannabis production (25-35 inches per year) are generally in line with water use for other agricultural crops, such as corn (20-25 inches per year), alfalfa (30-40 inches per year), tomatoes (15-25 inches per year), peaches (30-40 inches per year), and hops (20-30 inches per year). In a study of cannabis cultivation in Humboldt County, approximate water use for an outdoor cultivation site was 27,470 gallons (0.08 acre-feet) per year on average and ranged from approximately 1,220 to 462,000 gallons per year (0.004 to 1.4 acre-feet), with the size of the operation being a major factor in this range. Annual water uses for a greenhouse operation averaged approximately 52,300 gallons (0.16 acre-feet) and ranged from approximately 610 to 586,000 gallons (0.002 to 1.8 acre-feet) annually (Butsic and Brenner 2016). During a field visit conducted by technical staff to an outdoor cultivation site, one cultivator reported using approximately 75,000 gallons

(0.23 acre-feet) for 1 year’s entire cannabis crop (approximately 66 plants), or approximately 1,140 gallons per plant per year.”

CUA’s cultivation practices are most similar to commercial tomato or hops production with an estimated water use requirement of 20 inches per year. CUA’s total combined proposed cannabis canopy area is 174,240 ft² with an expected total annual water use requirement of 6.56 acre-feet or 2,137,461 gallons. The cultivation season for CUA’s proposed mixed light cannabis cultivation operation begins in May and ends in November of each year. The following table presents the expected water use of the proposed cultivation operation by month during the cultivation season in gallons and acre-feet.

May	June	July	Aug	Sept	Oct	Nov
133,590	400,772	400,772	400,772	400,772	267,181	133,590
.41	1.23	1.23	1.23	1.23	.82	.41

The well pump fitted with a CDFW-approved water-intake screen, pumps irrigation water to (5) 8,000 gallon water tanks for CUA’s proposed proposed cultivation area via an HDPE water supply line. The water supply lines are equipped with safety valves, capable of shutting off the flow of water so that waste of water and runoff is prevented/minimized when leaks occur and the system needs repair, and inline water meters compliant with California Code of Regulations, Title 23, Division 3, Chapter 2.7. CUA staff will maintain daily water meter readings records for a minimum of five years, and will make those records available to Water Boards, CDFW, and Lake County staff upon request. The irrigation system of the proposed cultivation area(s) will be composed of buried PVC piping, black poly tubing, and drip tapes/lines. CUA will install additional separate measuring/metering devices to quantify the water used for the proposed cannabis cultivation operation versus other beneficial uses on the Project Property (domestic/sanitary use and stock watering).

Water Conservation

Per the Water Conservation and Use requirements outlined in the SWRCB’s Cannabis General Order, CUA will implement the following Best Practical Treatment and Control (BPTC) measures to conserve water resources:

- CUA staff will regularly inspect their entire water delivery system for leaks and immediately repair any leaky faucets, pipes, connectors, or other leaks.
- CUA will apply weed-free mulch in cultivation areas that do not have ground cover to conserve soil moisture and minimize evaporative loss.
- CUA will implement water conserving irrigation methods (drip or trickle and micro-spray irrigation).
- CUA will maintain daily records of all water used for irrigation of cannabis. Daily records will be calculated by using a measuring device (inline water meter) installed on the main irrigation supply line between the water storage area and cultivation area(s).

Monitoring and Reporting

CUA's water supply lines are equipped with inline water meters compliant with California Code of Regulations, Title 23, Division 3, Chapter 2.7. Staff will continue to record daily water meter readings, and will maintain those records onsite for a minimum of five years. CUA will make those records available to Water Boards, CDFW, and Lake County staff upon request.

SITE PLANS AND MAPS

Sheet 1 – Existing Conditions Site Plan

Sheet 2 – Proposed Conditions Site Plan

Sheet 3 – Grading Plan

Sheet 4 – Security Site Plan

Sheet 5 – Cultivation site plan with Canopy

Sheet 6 – Erosion and Sediment Control Plan



EDMUND G. BROWN JR.
GOVERNOR

MATTHEW RODRIGUEZ
SECRETARY FOR
ENVIRONMENTAL PROTECTION

Central Valley Regional Water Quality Control Board

30 November 2018

WDID: 5S17CC406359

Justin Hammer
536 Deldrin Court
San Ramon, CA 95482

Mark McDonald
CUA Investments
536 Deldrin Court
San Ramon, CA 95482

NOTICE OF APPLICABILITY, WATER QUALITY ORDER WQ-2017-0023-DWQ, MARK MCDONALD, APN 013-017-420-000 & 013-017-730-000, LAKE COUNTY

Mark McDonald on behalf of Justin Hammer (hereafter "Discharger") submitted information through the State Water Resources Control Board's (State Water Board's) online portal on 14 November, 2018, for discharges of waste associated with cannabis cultivation related activities. Based on the information provided, the Discharger self-certified the cannabis cultivation activities are consistent with the requirements of the State Water Board *Cannabis Cultivation Policy- Principles and Guidelines for Cannabis Cultivation (Policy)*, and the *General Waste Discharge Requirements and Waiver of Waste Discharge Requirements for Discharges of Waste Associated with Cannabis Cultivation Activities*, Order No. WQ-2017-0023-DWQ (General Order). This letter provides notice that the Policy and General Order are applicable to the site as described below. You are hereby assigned waste discharge identification (WDID) number **5S17CC406359**.

The Discharger is responsible for all applicable requirements in the Policy, General Order, and this Notice of Applicability (NOA), including submittal of all required reports. The Discharger is the sole person with legal authority to, among other things, change information submitted to obtain regulatory coverage under the General Order; request changes to enrollment status, including risk designation; and terminate regulatory coverage. The Central Valley Regional Water Board will hold the Discharger liable for any noncompliance with the Policy, General Order, and this NOA, including non-payment of annual fees.

1. FACILITY AND DISCHARGE DESCRIPTION

The information submitted by the Discharger states the disturbed area is equal to or greater than 2,000 square feet and less than 1 acre (43,560 square feet), no portion of the disturbed area is within the setback requirements, no portion of the disturbed area is located on a slope greater than 30 percent, and the cannabis cultivation area is less than 1 acre.

Based on the information submitted by the Discharger, the cannabis cultivation activities are classified as Tier 1, low risk.

2. SITE-SPECIFIC REQUIREMENTS

The Policy and General Order are available on the Internet at

KARL E. LONGLEY SCD, P.E., CHAIR | PATRICK PULUPA, ESQ., EXECUTIVE OFFICER

11020 Sun Center Drive #200, Rancho Cordova, CA 95670 | www.waterboards.ca.gov/centralvalley

<<http://www.waterboards.ca.gov/cannabis>>. The Discharger shall ensure that all site operating personnel know, understand, and comply with the requirements contained in the Policy, General Order, this NOA, and the Monitoring and Reporting Program (MRP, Attachment B of the General Order). Note that the General Order contains standard provisions, general requirements, and prohibitions that apply to all cannabis cultivation activities.

The application requires the Discharger to self-certify that all applicable Best Practicable Treatment or Control (BPTC) measures are being implemented, or will be implemented by the onset of the winter period (November 15 - April 1), following the enrollment date. Dischargers that cannot implement all applicable BPTC measures by the onset of the winter period, following their enrollment date, shall submit to the appropriate Regional Water Board a *Site Management Plan* that includes a time schedule and scope of work for use by the Regional Water Board in developing a compliance schedule as described in Attachment A of the General Order.

3. TECHNICAL REPORT REQUIREMENTS

The following technical report(s) shall be submitted by the Discharger as described below:

1. A *Site Management Plan*, by **12 February 2019**, consistent with the requirements of General Order Provision C.1.a., and Attachment A, Section 5. Attachment D of the General Order provides guidance on the contents of the *Site Management Plan*.
2. A *Site Closure Report* must be submitted 90 days prior to permanently ending cannabis cultivation activities and seeking to rescind coverage under the General Order. The *Site Closure Report* must be consistent with the requirements of General Order Provision C.1.e., and Attachment A, Section 5. Attachment D of the General Order provides guidance on the contents of the *Site Closure Report*.

4. MONITORING AND REPORTING PROGRAM

The Discharger shall comply with the Monitoring and Reporting Program (MRP). Attachment B of the General Order provides guidance on the contents for the annual reporting requirement. Annual reports shall be submitted to the Regional Water Board by March 1 following the year being monitored. The Discharger shall not implement any changes to this MRP unless and until a revised MRP is issued by the Regional Water Board Executive Officer or the State Water Board Division of Water Quality Deputy Director, or the State Water Board Chief Deputy Director.

5. ANNUAL FEE

According to the information submitted, the discharge is classified as Tier 1, low risk with the current annual fee assessed at \$600. The fee is due and payable on an annual basis until coverage under this General Order is formally rescinded. To rescind coverage, the Discharger must submit a Notice of Termination, including a *Site Closure Report* at least 90 days prior to termination of activities and include a final MRP report.

6. TERMINATION OF COVERAGE UNDER THE GENERAL ORDER & REGIONAL WATER BOARD CONTACT INFORMATION

Cannabis cultivators that propose to terminate coverage under the Conditional Waiver or General Order must submit a Notice of Termination (NOT). The NOT must include a *Site*

Closure Report (see Technical Report Requirements above), and Dischargers enrolled under the General Order must also submit a final monitoring report. The Regional Water Board reserves the right to inspect the site before approving an NOT. Attachment C includes the NOT form and Attachment D of the General Order provides guidance on the contents of the *Site Closure Report*.

If the Discharger cannot comply with the General Order, or will be unable to implement an applicable BPTC measure contained in Attachment A by the onset of the winter period each year, the Discharger shall notify the Regional Water Board staff by telephone at 530-224-4845 so that a site-specific compliance schedule can be developed.

All monitoring reports, submittals, discharge notifications, and questions regarding compliance and enforcement should be directed to centralvalleyredding@waterboards.ca.gov or 530-224-4845.



(for) Patrick Pulupa,
Executive Officer

KG: ck

cc via email: Kevin Porzio, State Water Resources Control Board, Sacramento
Byron Turner, Lake County Planning Department, Lakeport



COUNTY OF LAKE

HEALTH SERVICES DEPARTMENT

Division of Environmental Health

Lakeport:

922 Bevins Court, Lakeport, CA 95453-9739

Telephone 707/ 263-1164 FAX: 263-1681

Jim Brown
Health Services Director

Raymond Ruminski, R.E.H.S.
Environmental Health Director

February 10, 2014

CUA Investments LP
536 Deldrin Court
San Ramon, CA 94582

RE: APN: 013-017-42
25252 Jerusalem Grade, Middletown

To Whom It May Concern,

The Department of Environmental Health has completed a soil study of the above referenced property for an on-site wastewater disposal system in the area that you indicated. The test pit excavations should be back-filled without delay. On the basis of this study the site appears suitable for on-site wastewater disposal. Approval of the permit to install is contingent on the size of system and proposed layout of the lot. The site has been approved for a Standard Septic System. A copy of the study is attached and the results are as follows:

A Standard Septic System will require a minimum of 150 lineal feet of drainfield per bedroom or 150 gallons of flow. Trench depth is not to exceed 24 inches nor be shallower than 24 inches with 12 inches total rock.

Maintain all required setbacks. Maintain a minimum 10' setback to water line. Maintain a minimum 100' setback from all water wells and springs. Maintain a minimum of 50' setback from intermittent creek. Please note approved area. A stake out is required prior to permit issuance.

A cross-sectional view will need to be provided with the three copies of scaled plot plans and specifications for the installation of the system with a septic permit application.

Drainfields must be installed on contour in the area as shown on the attached Report of Evaluation. Drainfield installation is not permitted on ground that has been altered by cutting or filling.

Any person other than the property owner must be licensed by the State of California to install and/or construct a septic system. A construction permit must be obtained from this office prior to installation of this system.

Please feel free to contact this office at (707) 263-1164 if you should have any additional questions regarding this report.

Sincerely,


John Del Signore
Registered Environmental Health Specialist

cc: DBS Construction 3840 Estside Calpella Road, Ukiah, CA 95482

SITE EVALUATION REPORT

<p>Pit # <u>12</u> Depth: <u>0-30</u></p> <p>Rock Fragments: <u><1%</u> 15%-30% >35%</p> <p>Texture: <u>Silt/clay</u></p> <p>Color: (Matrix) <u>10YR 3/2</u></p> <p>Mottles: Color _____</p> <p>Abundance: <2% 2-20% >20%</p> <p>Size <5mm 5-15mm >15mm</p> <p>Contrast: faint distinct prominent</p> <p>Structure: Grade - weak moderate <u>strong</u></p> <p>Type - gr pl pr cpr abk sbk</p> <p>Consistence: wet - stickiness so ss s vs</p> <p>plasticity po ps p vp</p> <p>Roots: few <u>common</u> many</p> <p>very fine fine medium coarse</p> <p>.1-.5mm .5-2mm 2-5mm 5-10mm+</p> <p>Horizon - Distinctness: <u>a</u> c g d</p> <p>Topography: <u>s</u> w l b</p> <p>Groundwater - Depth: actual _____</p> <p>predicted _____</p> <p>Pores: <u>low</u> common many</p> <p>very fine fine medium coarse</p> <p>.1-.5mm .5-2mm 2-5mm 5-10mm+</p> <p>ESD (effective soil depth): <u>30</u> inches</p>	<p>Pit # <u>1-2</u> Depth: <u>30-50"</u></p> <p>Rock Fragments: <15% 15%-30% >35%</p> <p>Texture: <u>restricted clay</u></p> <p>Color: (Matrix) <u>10YR 3/2</u></p> <p>Mottles: Color _____</p> <p>Abundance: <2% 2-20% >20%</p> <p>Size <5mm 5-15mm >15mm</p> <p>Contrast: faint distinct prominent</p> <p>Structure: Grade - weak moderate <u>strong</u></p> <p>Type - gr pl pr cpr abk sbk</p> <p>Consistence: wet - stickiness so ss s vs</p> <p>plasticity po ps p vp</p> <p>Roots: few common many</p> <p>very fine fine medium coarse</p> <p>.1-.5mm .5-2mm 2-5mm 5-10mm+</p> <p>Horizon - Distinctness: a c g d</p> <p>Topography: s w l b</p> <p>Groundwater - Depth: actual _____</p> <p>predicted _____</p> <p>Pores: few common many</p> <p>very fine fine medium coarse</p> <p>.1-.5mm .5-2mm 2-5mm 5-10mm+</p> <p>ESD (effective soil depth) _____ inches</p> <p style="font-size: 1.5em; text-align: center;"><u>Fractured Rock</u> <u>no Roots</u></p>	<p>Pit # <u>3</u> Depth: <u>0-14"</u></p> <p>Rock Fragments: <15% 15%-30% >35%</p> <p>Texture: _____</p> <p>Color: (Matrix) _____</p> <p>Mottles: Color _____</p> <p>Abundance: <2% 2-20% >20%</p> <p>Size <5mm 5-15mm >15mm</p> <p>Contrast: faint distinct prominent</p> <p>Structure: Grade - weak moderate strong</p> <p>Type - gr pl pr cpr abk sbk</p> <p>Consistence: wet - stickiness so ss s vs</p> <p>plasticity po ps p vp</p> <p>Roots: few common many</p> <p>very fine fine medium coarse</p> <p>.1-.5mm .5-2mm 2-5mm 5-10mm+</p> <p>Horizon - Distinctness: a c g d</p> <p>Topography: s w l b</p> <p>Groundwater - Depth: actual _____</p> <p>predicted _____</p> <p>Pores: few common many</p> <p>very fine fine medium coarse</p> <p>.1-.5mm .5-2mm 2-5mm 5-10mm+</p> <p>ESD (effective soil depth): _____ inches</p> <p style="font-size: 1.5em; text-align: center;"><u>Restricted</u> <u>Drained</u></p>
<p>Pit # _____ Depth: _____</p> <p>Rock Fragments: <16% 15%-30% >35%</p> <p>Texture: _____</p> <p>Color: (Matrix) _____</p> <p>Mottles: Color _____</p> <p>Abundance: <2% 2-20% >20%</p> <p>Size <5mm 5-15mm >15mm</p> <p>Contrast: faint distinct prominent</p> <p>Structure: Grade - weak moderate strong</p> <p>Type - gr pl pr cpr abk sbk</p> <p>Consistence: wet - stickiness so ss s vs</p> <p>plasticity po ps p vp</p> <p>Roots: few common many</p> <p>very fine fine medium coarse</p> <p>.1-.5mm .5-2mm 2-5mm 5-10mm+</p> <p>Horizon - Distinctness: a c g d</p> <p>Topography: s w l b</p> <p>Groundwater - Depth: actual _____</p> <p>predicted _____</p> <p>Pores: few common many</p> <p>very fine fine medium coarse</p> <p>.1-.5mm .5-2mm 2-5mm 5-10mm+</p> <p>ESD (effective soil depth): _____ inches</p>	<p>Pit # _____ Depth: _____</p> <p>Rock Fragments: <15% 15%-30% >35%</p> <p>Texture: _____</p> <p>Color: (Matrix) _____</p> <p>Mottles: Color _____</p> <p>Abundance: <2% 2-20% >20%</p> <p>Size <5mm 5-15mm >15mm</p> <p>Contrast: faint distinct prominent</p> <p>Structure: Grade - weak moderate strong</p> <p>Type - gr pl pr cpr abk sbk</p> <p>Consistence: wet - stickiness so ss s vs</p> <p>plasticity po ps p vp</p> <p>Roots: few common many</p> <p>very fine fine medium coarse</p> <p>.1-.5mm .5-2mm 2-5mm 5-10mm+</p> <p>Horizon - Distinctness: a c g d</p> <p>Topography: s w l b</p> <p>Groundwater - Depth: actual _____</p> <p>predicted _____</p> <p>Pores: few common many</p> <p>very fine fine medium coarse</p> <p>.1-.5mm .5-2mm 2-5mm 5-10mm+</p> <p>ESD (effective soil depth): _____ inches</p>	<p>Pit # _____ Depth: _____</p> <p>Rock Fragments: <15% 15%-30% >35%</p> <p>Texture: _____</p> <p>Color: (Matrix) _____</p> <p>Mottles: Color _____</p> <p>Abundance: <2% 2-20% >20%</p> <p>Size <5mm 5-15mm >15mm</p> <p>Contrast: faint distinct prominent</p> <p>Structure: Grade - weak moderate strong</p> <p>Type - gr pl pr cpr abk sbk</p> <p>Consistence: wet - stickiness so ss s vs</p> <p>plasticity po ps p vp</p> <p>Roots: few common many</p> <p>very fine fine medium coarse</p> <p>.1-.5mm .5-2mm 2-5mm 5-10mm+</p> <p>Horizon - Distinctness: a c g d</p> <p>Topography: s w l b</p> <p>Groundwater - Depth: actual _____</p> <p>predicted _____</p> <p>Pores: few common many</p> <p>very fine fine medium coarse</p> <p>.1-.5mm .5-2mm 2-5mm 5-10mm+</p> <p>ESD (effective soil depth): _____ inches</p>

Date: 1-16-14
 Evaluator: [Signature]

APN: C13-017-42
 Applicant: Aggie Bury

Landscape Notes Grass / some rocks Slope 10% Aspect _____

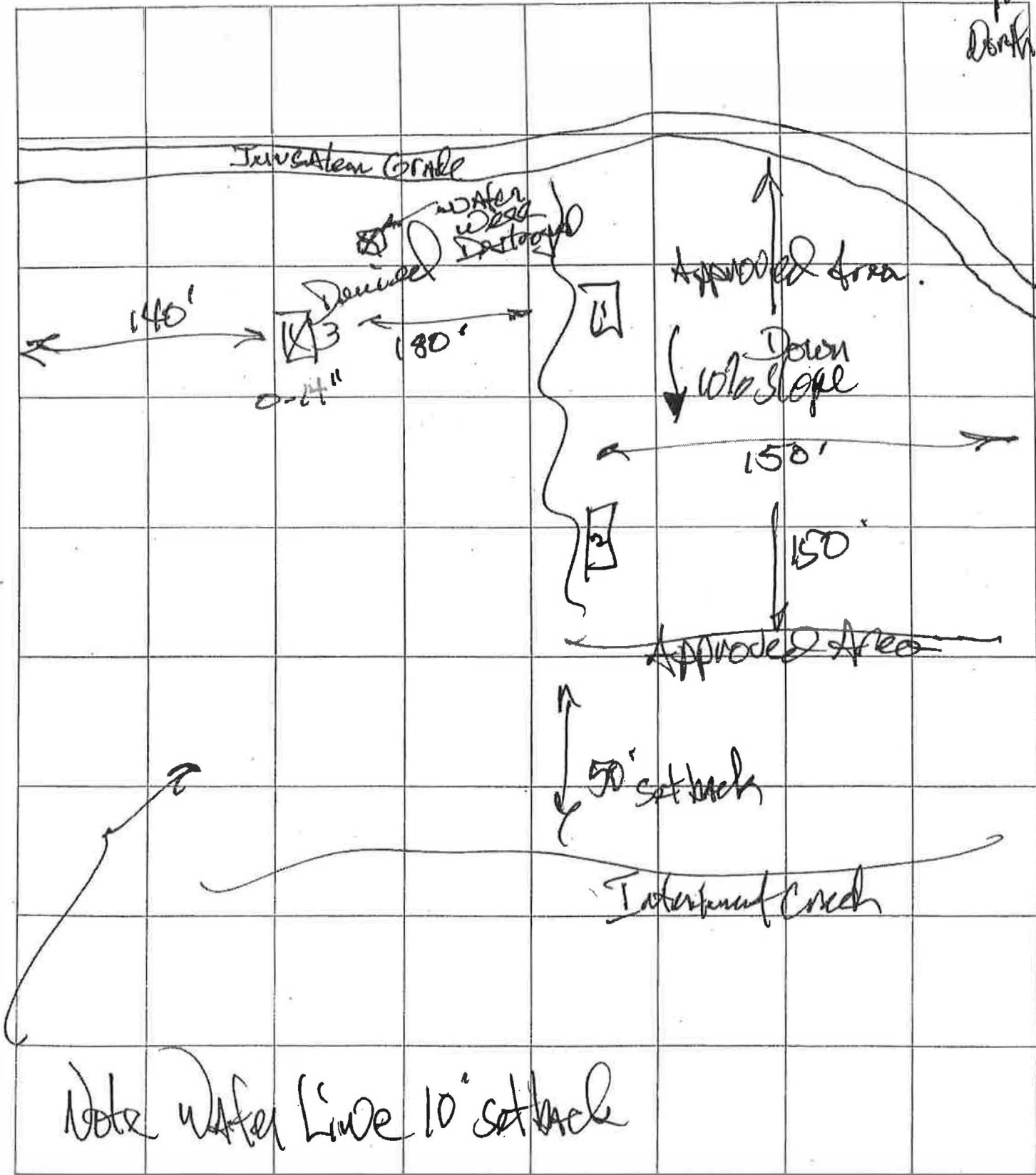
Other Site Notes _____

APPLICANT: Aggie Deery

EVALUATOR: John D. Sigmond

APN: 013-017-42

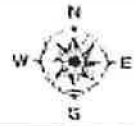
DATE: 1-16-14





Lake County, CA

013-017-42



All parcel boundaries are approximate. Discrepancies in acreage, shape and location are common. This map is not a legal survey document to be used in single site determinations. Consult your deed for a legal parcel description. <http://www.southcoastlake.ca.us/lexis/lexis.asp>

Printed: 12/11/13 8:02:24 AM

QUADRUPPLICATE
For Local Requirements
Page _____ of _____

STATE OF CALIFORNIA
WELL COMPLETION REPORT

Refer to Instruction Pamphlet

No. 0963029

Owner's Well No. _____
Date Work Began 5/17/2013 Ended 5/20/2013
Local Permit Agency Lake County Environmental Health
Permit No. RFE 2699 Permit Date 4/22/2013

3-017-42

DWR USE ONLY - DO NOT FILL IN

STATE WELL NO./STATION NO.

LATITUDE LONGITUDE

APN/TRS/OTHER

DEPTH FROM SURFACE			DRILLING METHOD		FLUID		DESCRIPTION
Fl.	to	Fl.				Describe material, grain size, color, etc.	
0	4				Air		Brown soil
4	12						Brown shale
12	200						Hard Black & Gray shale

ORIENTATION (\angle) VERTICAL _____ HORIZONTAL _____ ANGLE _____ (SPECIFY)

DRILLING METHOD Rotary FLUID Air

DEPTH FROM SURFACE

Fl. to Fl.

DESCRIPTION

Describe material, grain size, color, etc.

0 4

4 12

12 200

TOTAL DEPTH OF BORING 200 (Feet)

TOTAL DEPTH OF COMPLETED WELL 200 (Feet)

WELL OWNER

Name: CWM Investments
Mailing Address: 25442 Middleburg Blvd
City: Middleburg State: VA ZIP: 24042

WELL LOCATION

Address: 25442 Middleburg Blvd
City: Middleburg
County: Lake
APN Book 62 Page 177 Parcel 42
Township Range Section
Lat. _____ Long. _____

LOCATION SKETCH

WEST EAST

RECEIVED
JUN 06 2013
ENVIRONMENTAL HEALTH

ACTIVITY (\angle)

NEW WELL
MODIFICATION/REPAIR
Deepen _____
Other (Specify) _____

DESTROY (Describe Procedures and Materials Under "GEOLOGIC LOG")

USES (\angle)

WATER SUPPLY
 Domestic _____ Public _____
Irrigation _____ Industrial _____

MONITORING _____
TEST WELL _____
CATHODIC PROTECTION _____
HEAT EXCHANGE _____
DIRECT PUSH _____
INJECTION _____
VAPOR EXTRACTION _____
SPARGING _____
REMIEDIATION _____
OTHER (SPECIFY) _____

WATER LEVEL & YIELD OF COMPLETED WELL

DEPTH TO FIRST WATER 288 (Fl.) BELOW SURFACE
DEPTH OF STATIC WATER LEVEL 190 (Fl.) & DATE MEASURED 5/15/2013
ESTIMATED YIELD 1 (GPM) & TEST TYPE RFE 2699
TEST LENGTH 1 (Hrs.) TOTAL DRAWDOWN _____ (Fl.)

* May not be representative of a well's long-term yield.

DEPTH FROM SURFACE	BORE-HOLE DIA. (Inches)	CASING (S)							DEPTH FROM SURFACE	ANNULAR MATERIAL				
		TYPE (\angle)				MATERIAL / GRADE	INTERNAL DIAMETER (Inches)	GAUGE OR WALL THICKNESS		SLOT SIZE IF ANY (Inches)	TYPE			
		BLANK	SCREEN	CON. DUCTOR	FILL PIPE						CE- MENT (\angle)	BEN- TONITE (\angle)	FILL (\angle)	FILTER PACK (TYPE/SIZE)
Fl.	to	Fl.						Fl.	to	Fl.				
0	4	4		X				PVC 1/2"	4.5"	5/8" x 7/8"				
4	7	7		X				"	"	"				
7	10	10		X				"	"	"				
10	12	12		X				"	"	"				
12	180	180		X				"	"	"				
180	200	200		X				"	"	"				

ATTACHMENTS (\angle)

Geologic Log _____
Well Construction Diagram _____
Geophysical Log(s) _____
Soil/Water Chemical Analyses _____
Other _____

ATTACH ADDITIONAL INFORMATION, IF IT EXISTS

CERTIFICATION STATEMENT

I, the undersigned, certify that this report is complete and accurate to the best of my knowledge and belief.

NAME: Dan Mc Muller Well Drilling
(PERSON, FIRM, OR CORPORATION) (TYPED OR PRINTED)

ADDRESS: P.O. Box 1751 Lower Lake CA 95473
CITY: Lower Lake STATE: CA ZIP: 95473

Signed: Dan M. Muller DATE/SIGNED: 5/25/2013
C-57 LICENSED WATER WELL CONTRACTOR DATE/SIGNED: 5/25/2013 C-57 LICENSE NUMBER



WELL PERMIT APPLICATION

**SEE LAKE COUNTY ORDINANCE NO. 1823 FOR WELL
 CONSTRUCTION, DESTRUCTION AND REPAIR REQUIREMENTS**

JOB LOCATION ADDRESS: 25252 Jerusalem Grade Middletown CA 95461
 Assessor's Parcel Number: 013-017-42 Phone: (925) 788-9190
 Property Owner: CIA Investments Justin Hammer City: San Ramon
 Mailing Address: 536 Deldrin Ct State/Zip: CA, 94580

WELL DRILLER: Ban McMullen Well Drilling
 Mailing Address: P.O. Box 951 City/State/Zip: Lower Lake CA 95457
 CA C-57 License Number: 533152 Phone: 9944914
 Well Driller Print Name: DAN McMULLEN I HEREBY AFFIRM UNDER PENALTY OF PERJURY that I
 am licensed under the provisions of Chapter 3 of Division 3 of the Business and Professions Code, and my license is in full force and effect.
 WELL DRILLER'S SIGNATURE: Dan McMullen Date: 4/22/2013

TYPE OF WORK: New Well Reconstruction Destruction Test Well
 Soil Boring/Hydropunch Other: _____

PROPOSED USE: Domestic Public Monitoring Agriculture
 Test Well Other: _____

CONSTRUCTION: Cable Tool Mud Rotary Air Rotary Other: _____
 Casing Type & Standard: PVC F480 Wall Thickness: SDA 26 Diameter: 4 1/2"
 Proposed Depth of Seal: 20ft + Bore Hole Diameter: 9" Variance: _____

SEAL MATERIAL: Concrete Bentonite Clay Sand-Cement Grout
 Neat Cement Other: _____

***** PLEASE COMPLETE ALL ATTACHMENTS *****
THIS PERMIT IS VALID FOR ONE YEAR FROM DATE OF ISSUANCE
 Drillers please provide a minimum of 12-hours notice prior to sealing the annular space.

FOR OFFICE USE ONLY

Date Received: 4/22/13 Fee Paid: 248.00 Receipt Number: 28957 RP0000587
 Well Driller License # Verified By: J Banks
 100 Year Flood Plain? No Yes Zone: D Elevation: _____
 Water Resources: data base Minimum Casing Height: ≥ One foot above the elevation of the 100-
year flood plain elevation or above any known condition of flooding by drainage or runoff from the surrounding land.
 Issued By: Julie Pimentel Date: 04/23/13

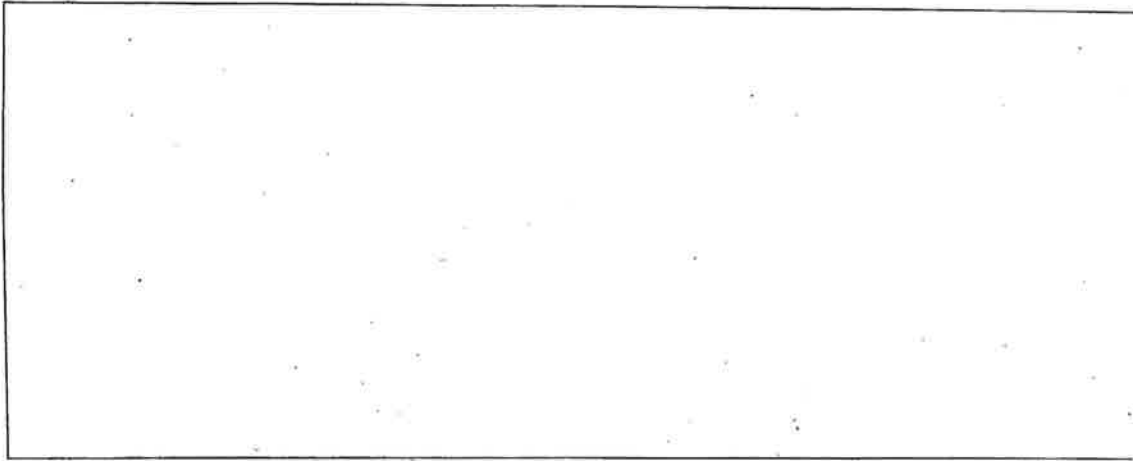
See well completion report.

Site #1 Seal Depth: 0 - 21 Feet Total Feet Below Ground Surface: _____ Well Boring
 Site #2 Seal Depth: _____ Feet Total Feet Below Ground Surface: _____ Destruct Boring
 Site #3 Seal Depth: _____ Feet Total Feet Below Ground Surface: _____ Destruct Boring
 Annular Seal Verified By: _____ Date: _____
 Destruction Verified By: _____ Date: _____
 Well Completion Report (Well Log) Date Received: 6/6/13 Initials: JB

WELL PERMIT NUMBER: WE 2899

LOCATION MAP

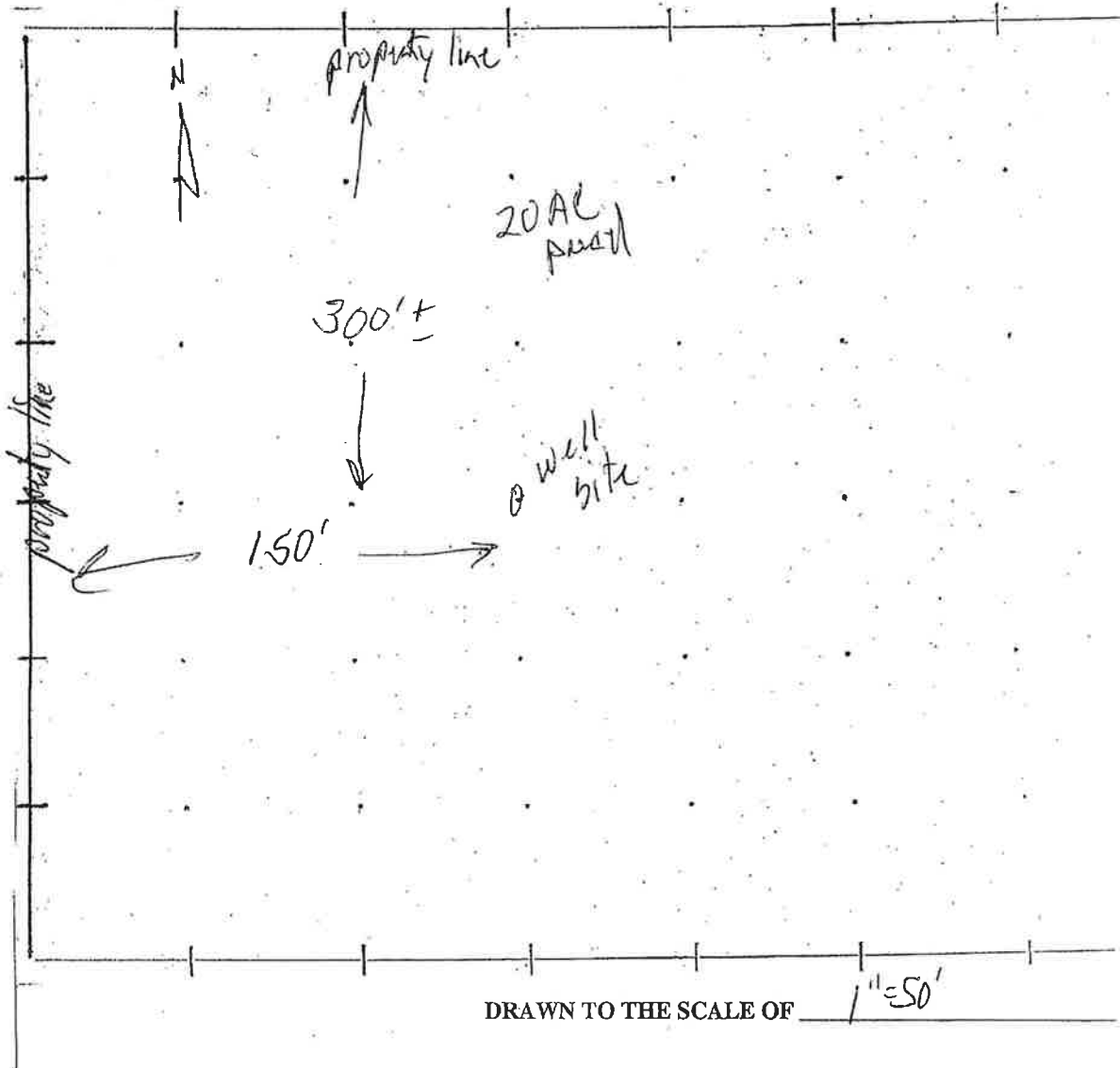
DIRECTIONS (Please include mile post markers, landmarks, nearest cross street, etc.):



DRAW TO SCALE ANY OF THE FOLLOWING WITHIN 200 FEET OF THE WELL.

1. Well/wells existing and proposed
2. Property lines, if over 200 feet
3. Easements or roads
4. All existing and proposed sewage disposal systems within 100 feet, adjacent parcels included.
5. Any facilities or piping designed to carry carry or hold sewage
6. Any storage or mixing area which involves hazardous Materials
7. Any structures

X None of the items above are within 200 feet of the well





LAKE COUNTY HEALTH SERVICES DEPARTMENT
 ENVIRONMENTAL HEALTH DIVISION
 922 BEVINS COURT, LAKEPORT, CA 95453
 PHONE: (707) 263-1164 FAX: (707) 263-1661

WELL PERMIT APPLICATION

SEE LAKE COUNTY ORDINANCE NO. 1823 FOR WELL CONSTRUCTION, DESTRUCTION AND REPAIR REQUIREMENTS

JOB LOCATION ADDRESS: 27332 Jerusalem Lane W.
 Assessor's Parcel Number: APN: 013-017-73 Phone: 530-613-2103
 Property Owner: JUSTIN HARNER City: MIDDETON
 Mailing Address: SAME State/Zip: 95461

WELL DRILLER: WEEKS WELL DRILLING
 Mailing Address: P.O. Box 176 City/State/Zip: SEBASTOPOL 95473
 CA C-57 License Number: 197681 Phone: _____
 Well Driller Print Name: Rob Schroeder I HEREBY AFFIRM UNDER PENALTY OF PERJURY that I am licensed under the provisions of Chapter 9 of Division 3 of the Business and Professions Code, and my license is in full force and effect.
 WELL DRILLER'S SIGNATURE: Rob Schroeder Date: 7-14-2017

TYPE OF WORK: New Well Reconstruction Destruction Test Well
 Soil Boring/Hydropunch Other: _____

PROPOSED USE: Domestic Public Monitoring Agriculture
 Test Well Other: _____

CONSTRUCTION: Cable Tool Mud Rotary Air Rotary Other: _____
 Casing Type & Standard: PVC Wall Thickness: 50R21 Diameter: 5"
 Proposed Depth of Seal: 20' Bore Hole Diameter: 11" Variance: _____

SEAL MATERIAL: Concrete Bentonite Clay Sand-Cement Grout
 Neat Cement Other: _____

***** PLEASE COMPLETE ALL ATTACHMENTS *****
THIS PERMIT IS VALID FOR ONE YEAR FROM DATE OF ISSUANCE
 Drillers please provide a minimum of 12-hours notice prior to sealing the annular space.

FOR OFFICE USE ONLY

Date Received: 6-14-17 Fee Paid: 285.00 Receipt Number: IN0008669
RP0007672
 Well Driller License # Verified By: P. Glavin
 100 Year Flood Plain? No Yes Zone: D undetermined Elevation: _____
 Water Resources: access database Minimum Casing Height: \geq One foot above the elevation of the 100-year flood plain elevation or above any known condition of flooding by drainage or runoff from the surrounding land.
 Issued By: Phaedon Preciado Date: 06/14/17

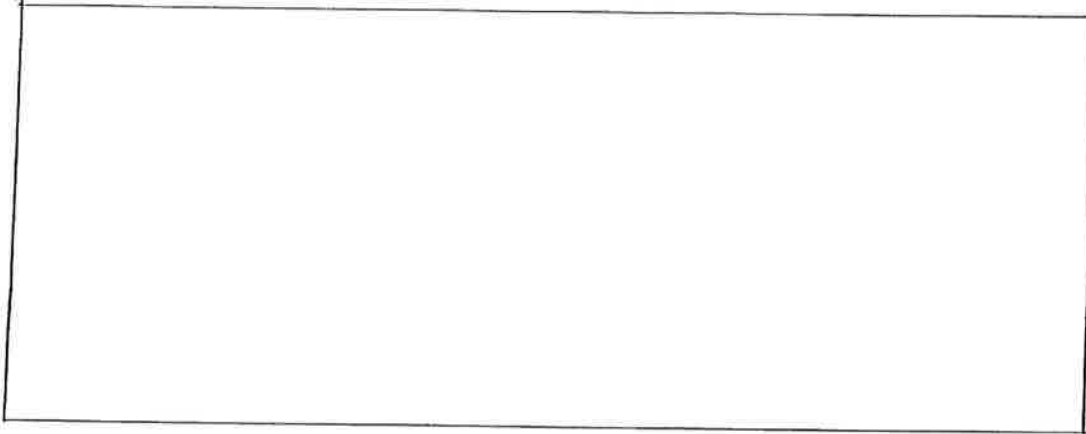
Site #1 Seal Depth: 23 - 0 Feet Total Feet Below Ground Surface: 23 Well Boring
 Site #2 Seal Depth: _____ Feet Total Feet Below Ground Surface: _____ Destruct Boring
 Site #3 Seal Depth: _____ Feet Total Feet Below Ground Surface: _____ Destruct Boring
 Annular Seal Verified By: Phaedon Preciado Date: 06/15/17
 Destruction Verified By: _____ Date: _____
 Well Completion Report (Well Log) Date Received: _____ Initials: _____

WP0002059

WELL PERMIT NUMBER: WE-4887

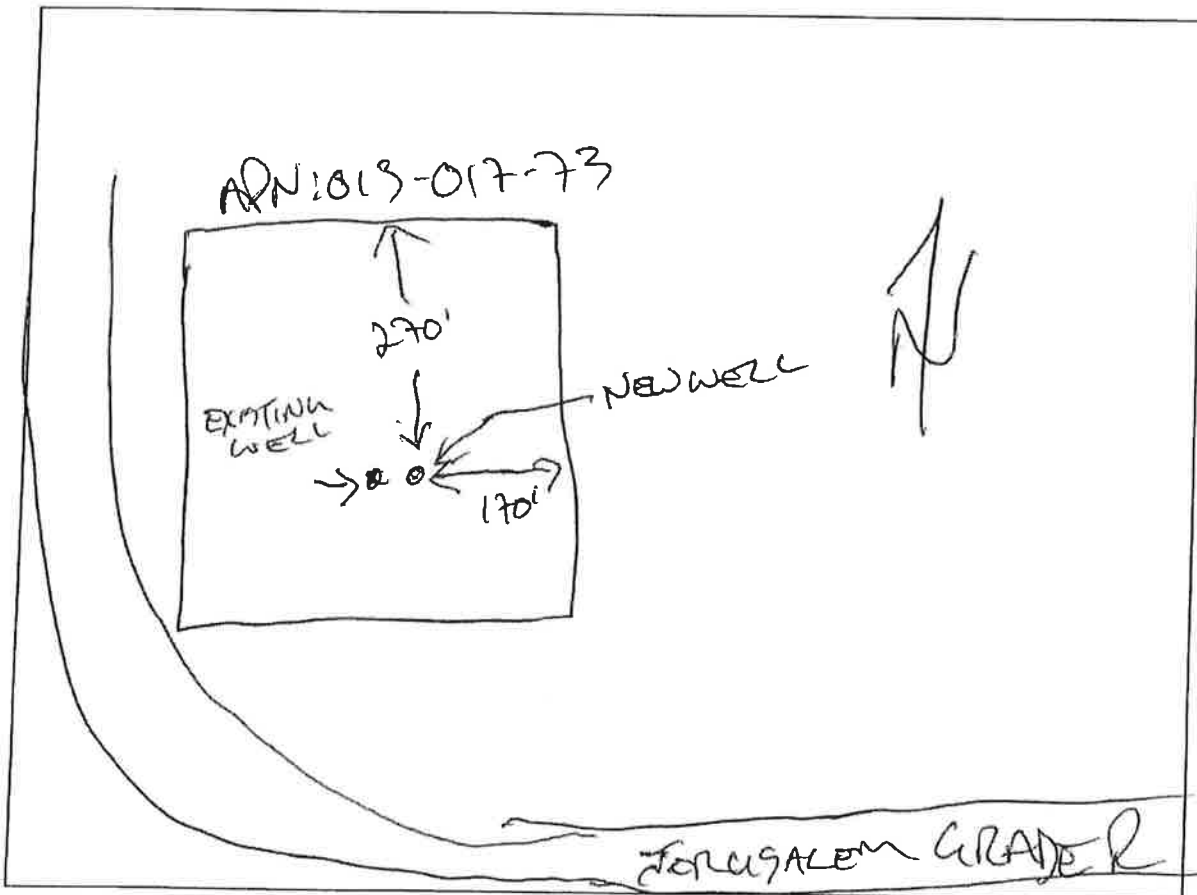
LOCATION MAP

DIRECTIONS (Please include mile post markers, landmarks, nearest cross street, etc.):



DRAW TO SCALE ANY OF THE FOLLOWING WITHIN 200 FEET OF THE WELL.

1. Well/wells existing and proposed
2. Property lines
3. Easements or roads
4. All existing and proposed sewage disposal systems within 100 feet, adjacent parcels included.
5. Any facilities or piping designed to carry or hold sewage.
6. Any storage or mixing area which involves Hazardous materials
7. Any structures
8. North/South Arrow
9. Show road or street with name/reference point
10. Photo Map if available
11. <http://gispublic.co.lake.ca.us/flexviewer/index.html>-highlight and paste in internet search box



DRAWN TO THE SCALE OF _____



COUNTY OF LAKE

Department of Public Health
922 Bevins Ct.
LAKEPORT, CALIFORNIA 95453
Telephone 707/263-2241

South Shore Civic Center
Telephone 707/894-2257

January 26, 1987

Peggy Santiago
154 Kings Wood Avenue
Vacaville, CA 95688

RE: APN 13-017-73 & 74
Jerico Valley

Dear Ms. Santiago:

I have completed a soil study of the above reference property for an On-Site System in the area that you indicated. On the basis of this study, on-site disposal appears suitable. A copy of the study is attached and the results are as follows:

This site has been approved for a Standard Septic System.

This site has been approved for the Alternative _____ System.

125 lineal feet of drainfield line will be required per 150 gallons of flow. This is to be a(n) _____ SERIAL distribution system. Trench depth is not to exceed 24 inches, nor be shallower than 24 inches.

Due to the alternate design and cost of this system, a potential buyer should be shown a copy of this letter and the attachment.

Other MAINTAIN 100 FOOT SETBACK FROM DRAINAGE; MAINTAIN 50 FOOT SETBACK FROM PROFILE HOLE #7 AS DEPICTED ON SITE EVALUATION TO AVOID PLACING LEACHFIELD IN AREA OF CALCIUM SALTS.

Drainfields must be installed in the area as shown on the attached Report of Evaluation. Drainfield installation is not permitted on ground that has been altered by cutting or filling.

Any person other than the property owner must be licensed by the State of California to install and/or construct a septic system. A construction permit must be obtained from this office prior to installation of this system.

Please feel free to contact this office if you should have any additional questions.

Sincerely,

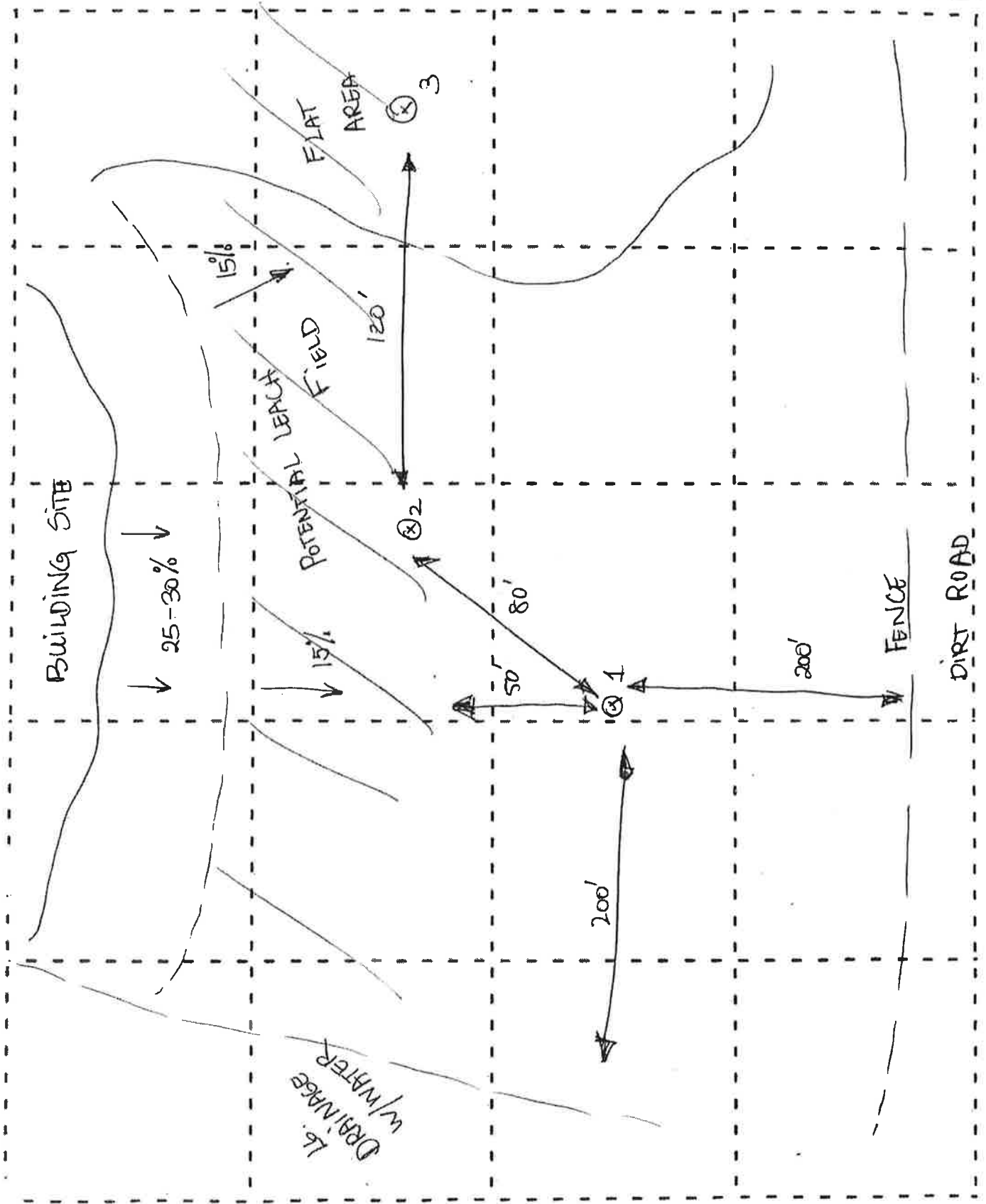
Peter Stanley, M.D.
Health Officer

Gwendolyn R. Baert
Gwendolyn R. Baert
District Sanitarian

SITE EVALUATION REPORT

Applicants Name: _____ Evaluator: _____

APN: _____ Date: _____



SITE EVALUATION REPORT

Applicants Name: SANTIAGO

Evaluator: B. JRT

APN: 13-017-73+74

Date: 1/22/87

Pit #: 3

Depth: 0-17"
 Rock Fragments: <15% 15%-35% >35%
 Texture: LOAM
 Color: (Matrix) 10YR 4/3
 Mottles: Color _____
 Abundance < 2% 2-20% > 20%
 Size < 5mm 5-15mm > 15mm
 Contrast faint distinct prominent
 Structure: Grade - weak moderate strong
 Type - gr pl pr cpr abk sbk
 Consistence: wet - stickiness so ss s va
 plasticity po ps p vp
 Roots: few common many
 Very Fine .1-3mm Fine .3-2mm Medium 2-3mm Coarse 3-10mm
 Horizon's - Distinctness: a c g d
 Topography: a w l b
 Groundwater - Depth: actual _____
 predicted _____

Pit #:

Depth: 17-54"
 Rock Fragments: <15% 15%-35% >35%
 Texture: HIGHLY FRACTURED ROCK
 Color: (Matrix) W/LOAM BETWEEN
 Mottles: Color 10YR 4/3
 Abundance < 2% 2-20% > 20%
 Size < 5mm 5-15mm > 15mm
 Contrast faint distinct prominent
 Structure: Grade - weak moderate strong
 Type - gr pl pr cpr abk sbk
 Consistence: wet - stickiness so ss s va
 plasticity po ps p vp
 Roots: few common many
 Very Fine .1-3mm Fine .3-2mm Medium 2-3mm Coarse 3-10mm
 Horizon's - Distinctness: a c g d
 Topography: a w l b
 Groundwater - Depth: actual _____
 predicted _____

Pit #:

Depth: _____
 Rock Fragments: <15% 15%-35% >35%
 Texture: _____
 Color: (Matrix) _____
 Mottles: Color _____
 Abundance < 2% 2-20% > 20%
 Size < 5mm 5-15mm > 15mm
 Contrast faint distinct prominent
 Structure: Grade - weak moderate strong
 Type - gr pl pr cpr abk sbk
 Consistence: wet - stickiness so ss s va
 plasticity po ps p vp
 Roots: few common many
 Very Fine .1-3mm Fine .3-2mm Medium 2-3mm Coarse 3-10mm
 Horizon's - Distinctness: a c g d
 Topography: a w l b
 Groundwater - Depth: actual _____
 predicted _____

Pit #:

Depth: _____
 Rock Fragments: <15% 15%-35% >35%
 Texture: _____
 Color: (Matrix) _____
 Mottles: Color _____
 Abundance < 2% 2-20% > 20%
 Size < 5mm 5-15mm > 15mm
 Contrast faint distinct prominent
 Structure: Grade - weak moderate strong
 Type - gr pl pr cpr abk sbk
 Consistence: wet - stickiness so ss s va
 plasticity po ps p vp
 Roots: few common many
 Very Fine .1-3mm Fine .3-2mm Medium 2-3mm Coarse 3-10mm
 Horizon's - Distinctness: a c g d
 Topography: a w l b
 Groundwater - Depth: actual _____
 predicted _____

Pit #:

Depth: _____
 Rock Fragments: <15% 15%-35% >35%
 Texture: _____
 Color: (Matrix) _____
 Mottles: Color _____
 Abundance < 2% 2-20% > 20%
 Size < 5mm 5-15mm > 15mm
 Contrast faint distinct prominent
 Structure: Grade - weak moderate strong
 Type - gr pl pr cpr abk sbk
 Consistence: wet - stickiness so ss s va
 plasticity po ps p vp
 Roots: few common many
 Very Fine .1-3mm Fine .3-2mm Medium 2-3mm Coarse 3-10mm
 Horizon's - Distinctness: a c g d
 Topography: a w l b
 Groundwater - Depth: actual _____
 predicted _____

Pit #:

Depth: _____
 Rock Fragments: <15% 15%-35% >35%
 Texture: _____
 Color: (Matrix) _____
 Mottles: Color _____
 Abundance < 2% 2-20% > 20%
 Size < 5mm 5-15mm > 15mm
 Contrast faint distinct prominent
 Structure: Grade - weak moderate strong
 Type - gr pl pr cpr abk sbk
 Consistence: wet - stickiness so ss s va
 plasticity po ps p vp
 Roots: few common many
 Very Fine .1-3mm Fine .3-2mm Medium 2-3mm Coarse 3-10mm
 Horizon's - Distinctness: a c g d
 Topography: a w l b
 Groundwater - Depth: actual _____
 predicted _____

Landscape Notes _____

Slope _____ Aspect _____

Other Site Notes _____

Initial _____ System Size _____ /150q Max. Depth Absorption Facility (in) _____ Design Flow _____ gpd
 Replacement _____ System Size _____ /150q Max. Depth Absorption Facility (in) _____
 Special Conditions _____

SITE EVALUATION REPORT

Applicants Name: SANTIAGO

Evaluator: ERT

APN: 13-017-73+74

Date: 1/22/87

<p>Pit #: <u>1</u></p> <p>Depth: <u>0-20"</u></p> <p>Rock Fragments: <u>< 15% 15% - 35% > 35%</u></p> <p>Texture: <u>VERY DAMP SILT</u></p> <p>Color: (Matrix) <u>10YR 3/2</u></p> <p>Mottles: Color _____</p> <p>Abundance < 2% 2-20% > 20%</p> <p>Size < 3mm 3-15mm > 15mm</p> <p>Contrast faint distinct prominent</p> <p>Structure: Grade - weak moderate strong</p> <p>Type - gr pl pr cpr abk sbk</p> <p>Consistence: wet - stickiness so ss s ve</p> <p>plasticity po ps p vp</p> <p>Roots: few common many</p> <p>Very Fine Fine Medium Coarse 1-3mm .5-2mm 2-5mm 5-10mm</p> <p>Horizon's - Distinctness: a c g d</p> <p>Topography: a w i b</p> <p>Groundwater - Depth: actual _____ predicted _____</p>	<p>Pit #: _____</p> <p>Depth: <u>20-35"</u></p> <p>Rock Fragments: <u>< 15% 15% - 35% > 35%</u></p> <p>Texture: <u>HIGHLY FRACTURE ROCK</u></p> <p>Color: (Matrix) <u>UNTEXTURABLE</u></p> <p>Mottles: Color _____</p> <p>Abundance < 2% 2-20% > 20%</p> <p>Size < 3mm 3-15mm > 15mm</p> <p>Contrast faint distinct prominent</p> <p>Structure: Grade - weak moderate strong</p> <p>Type - gr pl pr cpr abk sbk</p> <p>Consistence: wet - stickiness so ss s ve</p> <p>plasticity po ps p vp</p> <p>Roots: few common many</p> <p>Very Fine Fine Medium Coarse 1-3mm .5-2mm 2-5mm 5-10mm</p> <p>Horizon's - Distinctness: a c g d</p> <p>Topography: a w i b</p> <p>Groundwater - Depth: actual _____ predicted _____</p>	<p>Pit #: _____</p> <p>Depth: <u>35-60"</u></p> <p>Rock Fragments: <u>< 15% 15% - 35% > 35%</u></p> <p>Texture: <u>CLAY W/ CALCIUM SAITS</u></p> <p>Color: (Matrix) <u>10YR 5/1</u></p> <p>Mottles: Color _____</p> <p>Abundance < 2% 2-20% > 20%</p> <p>Size < 3mm 3-15mm > 15mm</p> <p>Contrast faint distinct prominent</p> <p>Structure: Grade - weak moderate strong</p> <p>Type - gr pl pr cpr abk sbk</p> <p>Consistence: wet - stickiness so ss s ve</p> <p>plasticity po ps p vp</p> <p>Roots: few common many <u>no roots</u></p> <p>Very Fine Fine Medium Coarse 1-3mm .5-2mm 2-5mm 5-10mm</p> <p>Horizon's - Distinctness: a c g d</p> <p>Topography: a w i b</p> <p>Groundwater - Depth: actual _____ predicted _____</p>
<p>Pit #: <u>2</u></p> <p>Depth: <u>0-12"</u></p> <p>Rock Fragments: <u>< 15% 15% - 35% > 35%</u></p> <p>Texture: <u>LOAM</u></p> <p>Color: (Matrix) <u>10YR 4/3</u></p> <p>Mottles: Color _____</p> <p>Abundance < 2% 2-20% > 20%</p> <p>Size < 3mm 3-15mm > 15mm</p> <p>Contrast faint distinct prominent</p> <p>Structure: Grade - weak moderate strong</p> <p>Type - gr pl pr cpr abk sbk</p> <p>Consistence: wet - stickiness so ss s ve</p> <p>plasticity po ps p vp</p> <p>Roots: few common many</p> <p>Very Fine Fine Medium Coarse 1-3mm .5-2mm 2-5mm 5-10mm</p> <p>Horizon's - Distinctness: a c g d</p> <p>Topography: a w i b</p> <p>Groundwater - Depth: actual _____ predicted _____</p>	<p>Pit #: _____</p> <p>Depth: <u>12-64"</u></p> <p>Rock Fragments: <u>< 15% 15% - 35% > 35%</u></p> <p>Texture: <u>HIGHLY FRACTURE P ROCK</u></p> <p>Color: (Matrix) <u>W/LOAM BETWEEN</u></p> <p>Mottles: Color <u>10YR 4/3</u></p> <p>Abundance < 2% 2-20% > 20%</p> <p>Size < 3mm 3-15mm > 15mm</p> <p>Contrast faint distinct prominent</p> <p>Structure: Grade - weak moderate strong</p> <p>Type - gr pl pr cpr abk sbk</p> <p>Consistence: wet - stickiness so ss s ve</p> <p>plasticity po ps p vp</p> <p>Roots: few common many</p> <p>Very Fine Fine Medium Coarse 1-3mm .5-2mm 2-5mm 5-10mm</p> <p>Horizon's - Distinctness: a c g d</p> <p>Topography: a w i b</p> <p>Groundwater - Depth: actual _____ predicted _____</p>	<p>Pit #: _____</p> <p>Depth: _____</p> <p>Rock Fragments: <u>< 15% 15% - 35% > 35%</u></p> <p>Texture: _____</p> <p>Color: (Matrix) _____</p> <p>Mottles: Color _____</p> <p>Abundance < 2% 2-20% > 20%</p> <p>Size < 3mm 3-15mm > 15mm</p> <p>Contrast faint distinct prominent</p> <p>Structure: Grade - weak moderate strong</p> <p>Type - gr pl pr cpr abk sbk</p> <p>Consistence: wet - stickiness so ss s ve</p> <p>plasticity po ps p vp</p> <p>Roots: few common many</p> <p>Very Fine Fine Medium Coarse 1-3mm .5-2mm 2-5mm 5-10mm</p> <p>Horizon's - Distinctness: a c g d</p> <p>Topography: a w i b</p> <p>Groundwater - Depth: actual _____ predicted _____</p>

Landscape Notes OAKS + GRASSES

Slope SEE BACK Aspect _____

Other Site Notes SMALL + LARGE DRAINAGES

System Specifications

Design Flow _____ gpd

Initial STANDARD System Size 125 /150q Max. Depth Absorption Facility (in) 24"

Replacement STANDARD System Size 125 /150q Max. Depth Absorption Facility (in) 24"

Special Conditions _____



COUNTY OF LAKE
HEALTH SERVICES DEPARTMENT
Division of Environmental Health
Lakeport:
922 Bevins Court, Lakeport, CA 95453-9739
Telephone 707/ 263-1164 FAX: 263-1681

Jim Brown
Health Services Director

Raymond Ruminski, R.E.H.S.
Environmental Health Director

February 10, 2014

CUA Investments LP
536 Deldrin Court
San Ramon, CA 94582

RE: APN: 013-017-35
25392 Jerusalem Grade, Middletown

To Whom It May Concern,

The Department of Environmental Health has completed a soil study of the above referenced property for an on-site wastewater disposal system in the area that you indicated. The test pit excavations should be back-filled without delay. On the basis of this study the site appears suitable for on-site wastewater disposal. Approval of the permit to install is contingent on the size of system and proposed layout of the lot. The site has been approved for a Standard Septic System. A copy of the study is attached and the results are as follows:

A Standard Septic System will require a minimum of 94 lineal feet of drainfield per bedroom or 150 gallons of flow. Trench depth is not to exceed 30 inches nor be shallower than 24 inches with 12 inches total rock.

Maintain all required setbacks. Maintain a minimum 100' setback from all water wells and springs. Maintain a minimum of 50' setback from intermittent creek. Maintain a minimum setback of 20' from all drainage swales. Please note approved area. A stake out is required prior to permit issuance.

A cross-sectional view will need to be provided with the three copies of scaled plot plans and specifications for the installation of the system with a septic permit application.

Drainfields must be installed on contour in the area as shown on the attached Report of Evaluation. Drainfield installation is not permitted on ground that has been altered by cutting or filling.

Any person other than the property owner must be licensed by the State of California to install and/or construct a septic system. A construction permit must be obtained from this office prior to installation of this system.

Please feel free to contact this office at (707) 263-1164 if you should have any additional questions regarding this report.

Sincerely,


John Del Signore
Registered Environmental Health Specialist

cc: DBS Construction 3840 Estside Calpella Road, Ukiah, CA 95482

SITE EVALUATION REPORT

<p>Pit # <u>12</u> Depth: <u>0-24"</u></p> <p>Rock Fragments: <15% 15%-30% >35%</p> <p>Texture: <u>Silty Clay</u></p> <p>Color: (Matrix) <u>10YR 3/2</u></p> <p>Mottles: Color _____</p> <p>Abundance: <2% 2-20% >20%</p> <p>Size <5mm 5-15mm >15mm</p> <p>Contrast: faint distinct prominent</p> <p>Structure: Grade - weak moderate <u>strong</u></p> <p>Type - gr pl pr cpr abk sbk</p> <p>Consistence: wet - stickiness so ss s vs</p> <p>plasticity po ps p vp</p> <p>Roots: few common many</p> <p>very fine fine medium coarse</p> <p>.1-.5mm .5-2mm 2-5mm 5-10mm+</p> <p>Horizon - Distinctness: <u>a</u> c g d</p> <p>Topography: <u>s</u> w l b</p> <p>Groundwater - Depth: actual _____</p> <p>predicted _____</p> <p>Pores: few common many</p> <p>very fine fine medium coarse</p> <p>.1-.5mm .5-2mm 2-5mm 5-10mm+</p> <p>ESD (effective soil depth): <u>60</u> inches</p>	<p>Pit # <u>12</u> Depth: <u>24-60"</u></p> <p>Rock Fragments: <15% 15%-30% >35%</p> <p>Texture: <u>Silty Clay</u></p> <p>Color: (Matrix) <u>2.5 YR 3/2</u></p> <p>Mottles: Color _____</p> <p>Abundance: <2% 2-20% >20%</p> <p>Size <5mm 5-15mm >15mm</p> <p>Contrast: faint distinct prominent</p> <p>Structure: Grade - weak moderate <u>strong</u></p> <p>Type - gr pl pr cpr abk sbk</p> <p>Consistence: wet - stickiness so ss s vs</p> <p>plasticity po ps p vp</p> <p>Roots: few common many</p> <p>very fine fine medium coarse</p> <p>.1-.5mm .5-2mm 2-5mm 5-10mm+</p> <p>Horizon - Distinctness: <u>a</u> c g d</p> <p>Topography: <u>s</u> w l b</p> <p>Groundwater - Depth: actual _____</p> <p>predicted _____</p> <p>Pores: few common many</p> <p>very fine fine medium coarse</p> <p>.1-.5mm .5-2mm 2-5mm 5-10mm+</p> <p>ESD (effective soil depth): <u>60</u> inches</p>	<p>Pit # _____ Depth: _____</p> <p>Rock Fragments: <15% 15%-30% >35%</p> <p>Texture: _____</p> <p>Color: (Matrix) _____</p> <p>Mottles: Color _____</p> <p>Abundance: <2% 2-20% >20%</p> <p>Size <5mm 5-15mm >15mm</p> <p>Contrast: faint distinct prominent</p> <p>Structure: Grade - weak moderate strong</p> <p>Type - gr pl pr cpr abk sbk</p> <p>Consistence: wet - stickiness so ss s vs</p> <p>plasticity po ps p vp</p> <p>Roots: few common many</p> <p>very fine fine medium coarse</p> <p>.1-.5mm .5-2mm 2-5mm 5-10mm+</p> <p>Horizon - Distinctness: a c g d</p> <p>Topography: s w l b</p> <p>Groundwater - Depth: actual _____</p> <p>predicted _____</p> <p>Pores: few common many</p> <p>very fine fine medium coarse</p> <p>.1-.5mm .5-2mm 2-5mm 5-10mm+</p> <p>ESD (effective soil depth): _____ inches</p>
<p>Pit # _____ Depth: _____</p> <p>Rock Fragments: <15% 15%-30% >35%</p> <p>Texture: _____</p> <p>Color: (Matrix) _____</p> <p>Mottles: Color _____</p> <p>Abundance: <2% 2-20% >20%</p> <p>Size <5mm 5-15mm >15mm</p> <p>Contrast: faint distinct prominent</p> <p>Structure: Grade - weak moderate strong</p> <p>Type - gr pl pr cpr abk sbk</p> <p>Consistence: wet - stickiness so ss s vs</p> <p>plasticity po ps p vp</p> <p>Roots: few common many</p> <p>very fine fine medium coarse</p> <p>.1-.5mm .5-2mm 2-5mm 5-10mm+</p> <p>Horizon - Distinctness: a c g d</p> <p>Topography: s w l b</p> <p>Groundwater - Depth: actual _____</p> <p>predicted _____</p> <p>Pores: few common many</p> <p>very fine fine medium coarse</p> <p>.1-.5mm .5-2mm 2-5mm 5-10mm+</p> <p>ESD (effective soil depth): _____ inches</p>	<p>Pit # _____ Depth: _____</p> <p>Rock Fragments: <15% 15%-30% >35%</p> <p>Texture: _____</p> <p>Color: (Matrix) _____</p> <p>Mottles: Color _____</p> <p>Abundance: <2% 2-20% >20%</p> <p>Size <5mm 5-15mm >15mm</p> <p>Contrast: faint distinct prominent</p> <p>Structure: Grade - weak moderate strong</p> <p>Type - gr pl pr cpr abk sbk</p> <p>Consistence: wet - stickiness so ss s vs</p> <p>plasticity po ps p vp</p> <p>Roots: few common many</p> <p>very fine fine medium coarse</p> <p>.1-.5mm .5-2mm 2-5mm 5-10mm+</p> <p>Horizon - Distinctness: a c g d</p> <p>Topography: s w l b</p> <p>Groundwater - Depth: actual _____</p> <p>predicted _____</p> <p>Pores: few common many</p> <p>very fine fine medium coarse</p> <p>.1-.5mm .5-2mm 2-5mm 5-10mm+</p> <p>ESD (effective soil depth): _____ inches</p>	<p>Pit # _____ Depth: _____</p> <p>Rock Fragments: <15% 15%-30% >35%</p> <p>Texture: _____</p> <p>Color: (Matrix) _____</p> <p>Mottles: Color _____</p> <p>Abundance: <2% 2-20% >20%</p> <p>Size <5mm 5-15mm >15mm</p> <p>Contrast: faint distinct prominent</p> <p>Structure: Grade - weak moderate strong</p> <p>Type - gr pl pr cpr abk sbk</p> <p>Consistence: wet - stickiness so ss s vs</p> <p>plasticity po ps p vp</p> <p>Roots: few common many</p> <p>very fine fine medium coarse</p> <p>.1-.5mm .5-2mm 2-5mm 5-10mm+</p> <p>Horizon - Distinctness: a c g d</p> <p>Topography: s w l b</p> <p>Groundwater - Depth: actual _____</p> <p>predicted _____</p> <p>Pores: few common many</p> <p>very fine fine medium coarse</p> <p>.1-.5mm .5-2mm 2-5mm 5-10mm+</p> <p>ESD (effective soil depth): _____ inches</p>

Date: 1-16-04
 Evaluator: [Signature]

APN: 013-C17-35
 Applicant: [Signature]

Landscape Notes Heavy Bush

Slope 20% Aspect _____

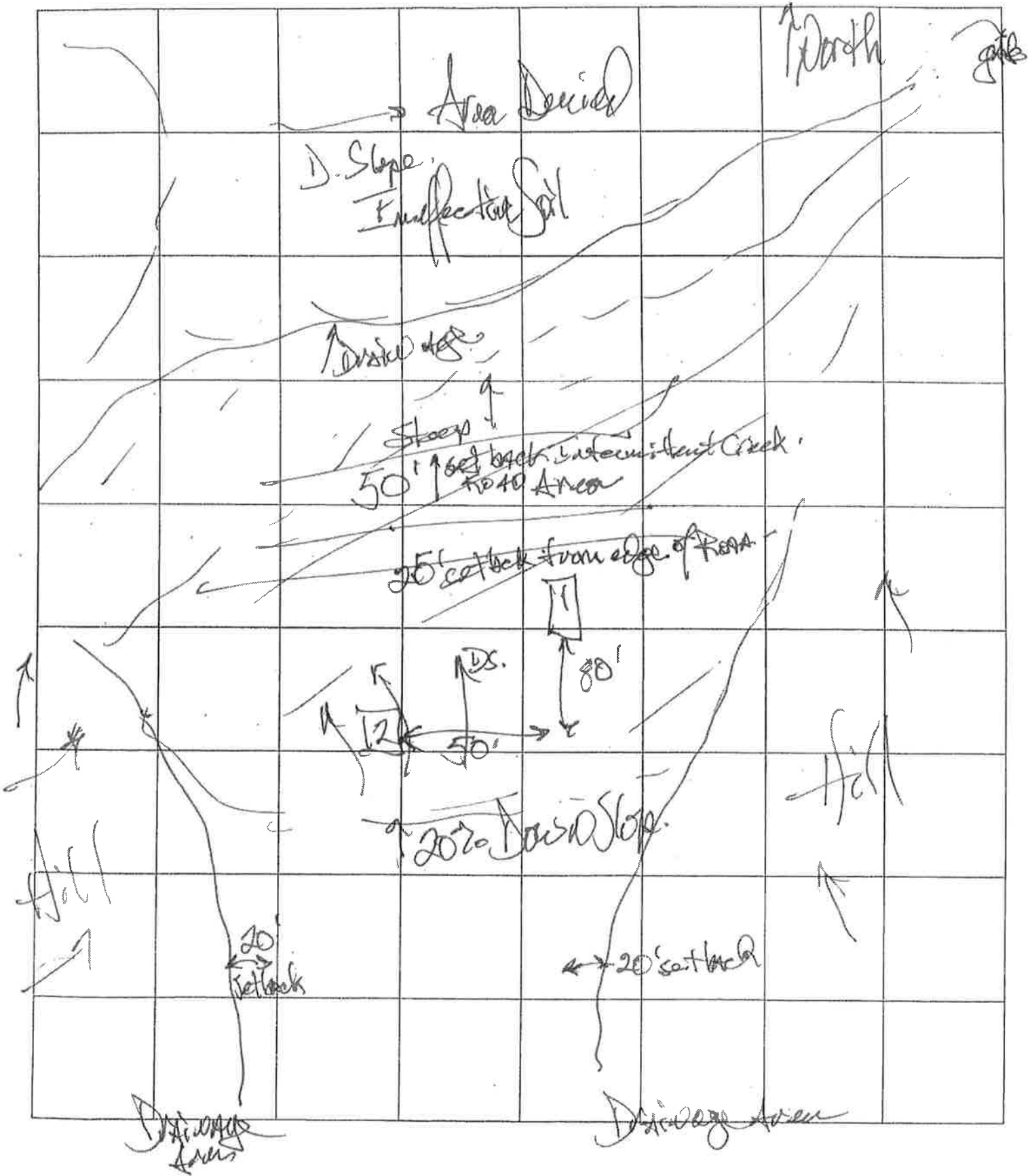
Other Site Notes _____

APPLICANT: Aggie Dairy

EVALUATOR: John D. [Signature]

APN: 013-017-35

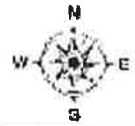
DATE: 1-16-05





Lake County, CA

013-017-35



All parcel boundaries are approximate. Discrepancies in acreage, shape and location are common. This map is not a legal survey document to be used in single site determinations. Consult your deed for a legal parcel description. <http://gispublic.co.lake.ca.us/flexviewer>

Printed: 12/11/13 7:53:00 AM



EDMUND G. BROWN JR.
GOVERNOR

MATTHEW RODRIGUEZ
SECRETARY FOR
ENVIRONMENTAL PROTECTION

Central Valley Regional Water Quality Control Board

30 November 2018

WDID: 5S17CC406509

Justin Hammer
536 Deldrin Court
San Ramon, CA 95482

Justin Hammer
536 Deldrin Court
San Ramon, CA 95482

NOTICE OF APPLICABILITY, WATER QUALITY ORDER WQ-2017-0023-DWQ, MARK MCDONALD, APN 013-017-360-000, LAKE COUNTY

Mark McDonald on behalf of Justin Hammer (hereafter "Discharger") submitted information through the State Water Resources Control Board's (State Water Board's) online portal on 19 November, 2018, for discharges of waste associated with cannabis cultivation related activities. Based on the information provided, the Discharger self-certified the cannabis cultivation activities are consistent with the requirements of the State Water Board *Cannabis Cultivation Policy- Principles and Guidelines for Cannabis Cultivation (Policy)*, and the *General Waste Discharge Requirements and Waiver of Waste Discharge Requirements for Discharges of Waste Associated with Cannabis Cultivation Activities*, Order No. WQ-2017-0023-DWQ (General Order). This letter provides notice that the Policy and General Order are applicable to the site as described below. You are hereby assigned waste discharge identification (WDID) number **5S17CC406509**.

The Discharger is responsible for all applicable requirements in the Policy, General Order, and this Notice of Applicability (NOA), including submittal of all required reports. The Discharger is the sole person with legal authority to, among other things, change information submitted to obtain regulatory coverage under the General Order; request changes to enrollment status, including risk designation; and terminate regulatory coverage. The Central Valley Regional Water Board will hold the Discharger liable for any noncompliance with the Policy, General Order, and this NOA, including non-payment of annual fees.

1. FACILITY AND DISCHARGE DESCRIPTION

The information submitted by the Discharger states the disturbed area is equal to or greater than 2,000 square feet and less than 1 acre (43,560 square feet), no portion of the disturbed area is within the setback requirements, no portion of the disturbed area is located on a slope greater than 30 percent, and the cannabis cultivation area is less than 1 acre.

Based on the information submitted by the Discharger, the cannabis cultivation activities are classified as Tier 1, low risk.

2. SITE-SPECIFIC REQUIREMENTS

The Policy and General Order are available on the Internet at <http://www.waterboards.ca.gov/cannabis>. The Discharger shall ensure that all site operating

KARL E. LONGLEY SCD, P.E., CHAIR | PATRICK PULUPA, ESO., EXECUTIVE OFFICER

11020 Sun Center Drive #200, Rancho Cordova, CA 95670 | www.waterboards.ca.gov/centralvalley

personnel know, understand, and comply with the requirements contained in the Policy, General Order, this NOA, and the Monitoring and Reporting Program (MRP, Attachment B of the General Order). Note that the General Order contains standard provisions, general requirements, and prohibitions that apply to all cannabis cultivation activities.

The application requires the Discharger to self-certify that all applicable Best Practicable Treatment or Control (BPTC) measures are being implemented, or will be implemented by the onset of the winter period (November 15 - April 1), following the enrollment date. Dischargers that cannot implement all applicable BPTC measures by the onset of the winter period, following their enrollment date, shall submit to the appropriate Regional Water Board a *Site Management Plan* that includes a time schedule and scope of work for use by the Regional Water Board in developing a compliance schedule as described in Attachment A of the General Order.

3. TECHNICAL REPORT REQUIREMENTS

The following technical report(s) shall be submitted by the Discharger as described below:

1. A *Site Management Plan*, by **17 February 2019**, consistent with the requirements of General Order Provision C.1.a., and Attachment A, Section 5. Attachment D of the General Order provides guidance on the contents of the *Site Management Plan*.
2. A *Site Closure Report* must be submitted 90 days prior to permanently ending cannabis cultivation activities and seeking to rescind coverage under the General Order. The *Site Closure Report* must be consistent with the requirements of General Order Provision C.1.e., and Attachment A, Section 5. Attachment D of the General Order provides guidance on the contents of the *Site Closure Report*.

4. MONITORING AND REPORTING PROGRAM

The Discharger shall comply with the Monitoring and Reporting Program (MRP). Attachment B of the General Order provides guidance on the contents for the annual reporting requirement. Annual reports shall be submitted to the Regional Water Board by March 1 following the year being monitored. The Discharger shall not implement any changes to this MRP unless and until a revised MRP is issued by the Regional Water Board Executive Officer or the State Water Board Division of Water Quality Deputy Director, or the State Water Board Chief Deputy Director.

5. ANNUAL FEE

According to the information submitted, the discharge is classified as Tier 1, low risk with the current annual fee assessed at \$600. The fee is due and payable on an annual basis until coverage under this General Order is formally rescinded. To rescind coverage, the Discharger must submit a Notice of Termination, including a *Site Closure Report* at least 90 days prior to termination of activities and include a final MRP report.

6. TERMINATION OF COVERAGE UNDER THE GENERAL ORDER & REGIONAL WATER BOARD CONTACT INFORMATION

Cannabis cultivators that propose to terminate coverage under the Conditional Waiver or General Order must submit a Notice of Termination (NOT). The NOT must include a *Site Closure Report* (see Technical Report Requirements above), and Dischargers enrolled under

the General Order must also submit a final monitoring report. The Regional Water Board reserves the right to inspect the site before approving an NOT. Attachment C includes the NOT form and Attachment D of the General Order provides guidance on the contents of the *Site Closure Report*.

If the Discharger cannot comply with the General Order, or will be unable to implement an applicable BPTC measure contained in Attachment A by the onset of the winter period each year, the Discharger shall notify the Regional Water Board staff by telephone at 530-224-4845 so that a site-specific compliance schedule can be developed.

All monitoring reports, submittals, discharge notifications, and questions regarding compliance and enforcement should be directed to centralvalleyredding@waterboards.ca.gov or 530-224-4845.



(for) Patrick Pulupa,
Executive Officer

KG: ck

cc via email: Kevin Porzio, State Water Resources Control Board, Sacramento
Byron Turner, Lake County Planning Department, Lakeport



COUNTY OF LAKE

HEALTH SERVICES DEPARTMENT

Division of Environmental Health

Lakeport:

922 Bevins Court, Lakeport, CA 95453-9739

Telephone 707/ 263-1164 FAX: 263-1681

Jim Brown
Health Services Director

Raymond Ruminski, R.E.H.S.
Environmental Health Director

February 10, 2014

CUA Investments LP
536 Deldrin Court
San Ramon, CA 94582

RE: APN: 013-017-36
25372 Jerusalem Grade, Middletown

To Whom It May Concern,

The Department of Environmental Health has completed a soil study of the above referenced property for an on-site wastewater disposal system in the area that you indicated. The test pit excavations should be back-filled without delay. On the basis of this study the site appears suitable for on-site wastewater disposal. Approval of the permit to install is contingent on the size of system and proposed layout of the lot. The site has been approved for a Standard Septic System. A copy of the study is attached and the results are as follows:

A Standard Septic System will require a minimum of 150 lineal feet of drainfield per bedroom or 150 gallons of flow. Trench depth is not to exceed 24 inches nor be shallower than 24 inches with 12 inches total rock.

Maintain all required setbacks. Maintain a minimum 100' setback from all water wells and springs. Please note approved area. A stake out is required prior to permit issuance.

A cross-sectional view will need to be provided with the three copies of scaled plot plans and specifications for the installation of the system with a septic permit application.

Drainfields must be installed on contour in the area as shown on the attached Report of Evaluation. Drainfield installation is not permitted on ground that has been altered by cutting or filling.

Any person other than the property owner must be licensed by the State of California to install and/or construct a septic system. A construction permit must be obtained from this office prior to installation of this system.

Please feel free to contact this office at (707) 263-1164 if you should have any additional questions regarding this report.

Sincerely,



John Del Signore
Registered Environmental Health Specialist

cc: DBS Construction 3840 Estside Calpella Road, Ukiah, CA 95482

SITE EVALUATION REPORT

<p>Pit # <u>123</u> Depth: <u>0-30"</u></p> <p>Rock Fragments: <u><15%</u> 15%-30% >35%</p> <p>Texture: <u>Silty clay</u></p> <p>Color: (Matrix) <u>DRK G/L</u></p> <p>Mottles: Color _____</p> <p>Abundance: <2% <u>2-20%</u> >20%</p> <p>Size <5mm 5-15mm >15mm</p> <p>Contrast: faint distinct prominent</p> <p>Structure: Grade - weak moderate <u>strong</u></p> <p>Type - gr pl pr cpr abk sbk</p> <p>Consistence: wet - stickiness so ss s vs</p> <p>plasticity po ps p vp</p> <p>Roots: few <u>common</u> many</p> <p><u>very fine</u> fine medium coarse</p> <p>.1-.5mm .5-2mm 2-5mm 5-10mm+</p> <p>Horizon - Distinctness: a c g d</p> <p>Topography: s w l b</p> <p>Groundwater - Depth: actual _____</p> <p>predicted _____</p> <p>Pores: few <u>common</u> many</p> <p><u>very fine</u> fine medium coarse</p> <p>.1-.5mm .5-2mm 2-5mm 5-10mm+</p> <p>ESD (effective soil depth): _____ inches</p>	<p>Pit # <u>123</u> Depth: <u>30"-60"</u></p> <p>Rock Fragments: <u><15%</u> 15%-30% >35%</p> <p>Texture: <u>Silty clay</u></p> <p>Color: (Matrix) _____</p> <p>Mottles: Color _____</p> <p>Abundance: <2% 2-20% >20%</p> <p>Size <5mm 5-15mm >15mm</p> <p>Contrast: faint distinct prominent</p> <p>Structure: Grade - weak moderate strong</p> <p>Type - gr pl pr cpr abk sbk</p> <p>Consistence: wet - stickiness so ss s vs</p> <p>plasticity po ps p vp</p> <p>Roots: few common many</p> <p>very fine fine medium coarse</p> <p>.1-.5mm .5-2mm 2-5mm 5-10mm+</p> <p>Horizon - Distinctness: a c g d</p> <p>Topography: s w l b</p> <p>Groundwater - Depth: actual _____</p> <p>predicted _____</p> <p>Pores: few common many</p> <p>very fine fine medium coarse</p> <p>.1-.5mm .5-2mm 2-5mm 5-10mm+</p> <p>ESD (effective soil depth): <u>30"</u> inches</p>	<p>Pit # _____ Depth: _____</p> <p>Rock Fragments: <15% 15%-30% >35%</p> <p>Texture: _____</p> <p>Color: (Matrix) _____</p> <p>Mottles: Color _____</p> <p>Abundance: <2% 2-20% >20%</p> <p>Size <5mm 5-15mm >15mm</p> <p>Contrast: faint distinct prominent</p> <p>Structure: Grade - weak moderate strong</p> <p>Type - gr pl pr cpr abk sbk</p> <p>Consistence: wet - stickiness so ss s vs</p> <p>plasticity po ps p vp</p> <p>Roots: few common many</p> <p>very fine fine medium coarse</p> <p>.1-.5mm .5-2mm 2-5mm 5-10mm+</p> <p>Horizon - Distinctness: a c g d</p> <p>Topography: s w l b</p> <p>Groundwater - Depth: actual _____</p> <p>predicted _____</p> <p>Pores: few common many</p> <p>very fine fine medium coarse</p> <p>.1-.5mm .5-2mm 2-5mm 5-10mm+</p> <p>ESD (effective soil depth): _____ inches</p>
<p>Pit # _____ Depth: _____</p> <p>Rock Fragments: <15% 15%-30% >35%</p> <p>Texture: _____</p> <p>Color: (Matrix) _____</p> <p>Mottles: Color _____</p> <p>Abundance: <2% 2-20% >20%</p> <p>Size <5mm 5-15mm >15mm</p> <p>Contrast: faint distinct prominent</p> <p>Structure: Grade - weak moderate strong</p> <p>Type - gr pl pr cpr abk sbk</p> <p>Consistence: wet - stickiness so ss s vs</p> <p>plasticity po ps p vp</p> <p>Roots: few common many</p> <p>very fine fine medium coarse</p> <p>.1-.5mm .5-2mm 2-5mm 5-10mm+</p> <p>Horizon - Distinctness: a c g d</p> <p>Topography: s w l b</p> <p>Groundwater - Depth: actual _____</p> <p>predicted _____</p> <p>Pores: few common many</p> <p>very fine fine medium coarse</p> <p>.1-.5mm .5-2mm 2-5mm 5-10mm+</p> <p>ESD (effective soil depth): _____ inches</p>	<p>Pit # _____ Depth: _____</p> <p>Rock Fragments: <15% 15%-30% >35%</p> <p>Texture: _____</p> <p>Color: (Matrix) _____</p> <p>Mottles: Color _____</p> <p>Abundance: <2% 2-20% >20%</p> <p>Size <5mm 5-15mm >15mm</p> <p>Contrast: faint distinct prominent</p> <p>Structure: Grade - weak moderate strong</p> <p>Type - gr pl pr cpr abk sbk</p> <p>Consistence: wet - stickiness so ss s vs</p> <p>plasticity po ps p vp</p> <p>Roots: few common many</p> <p>very fine fine medium coarse</p> <p>.1-.5mm .5-2mm 2-5mm 5-10mm+</p> <p>Horizon - Distinctness: a c g d</p> <p>Topography: s w l b</p> <p>Groundwater - Depth: actual _____</p> <p>predicted _____</p> <p>Pores: few common many</p> <p>very fine fine medium coarse</p> <p>.1-.5mm .5-2mm 2-5mm 5-10mm+</p> <p>ESD (effective soil depth): _____ inches</p>	<p>Pit # _____ Depth: _____</p> <p>Rock Fragments: <15% 15%-30% >35%</p> <p>Texture: _____</p> <p>Color: (Matrix) _____</p> <p>Mottles: Color _____</p> <p>Abundance: <2% 2-20% >20%</p> <p>Size <5mm 5-15mm >15mm</p> <p>Contrast: faint distinct prominent</p> <p>Structure: Grade - weak moderate strong</p> <p>Type - gr pl pr cpr abk sbk</p> <p>Consistence: wet - stickiness so ss s vs</p> <p>plasticity po ps p vp</p> <p>Roots: few common many</p> <p>very fine fine medium coarse</p> <p>.1-.5mm .5-2mm 2-5mm 5-10mm+</p> <p>Horizon - Distinctness: a c g d</p> <p>Topography: s w l b</p> <p>Groundwater - Depth: actual _____</p> <p>predicted _____</p> <p>Pores: few common many</p> <p>very fine fine medium coarse</p> <p>.1-.5mm .5-2mm 2-5mm 5-10mm+</p> <p>ESD (effective soil depth): _____ inches</p>

Date: 1-14-14
 Evaluator: [Signature]

APN: 03-017-36
 Applicant: [Signature]

Landscape Notes SMED DARK GRASS Slope 11 Aspect _____

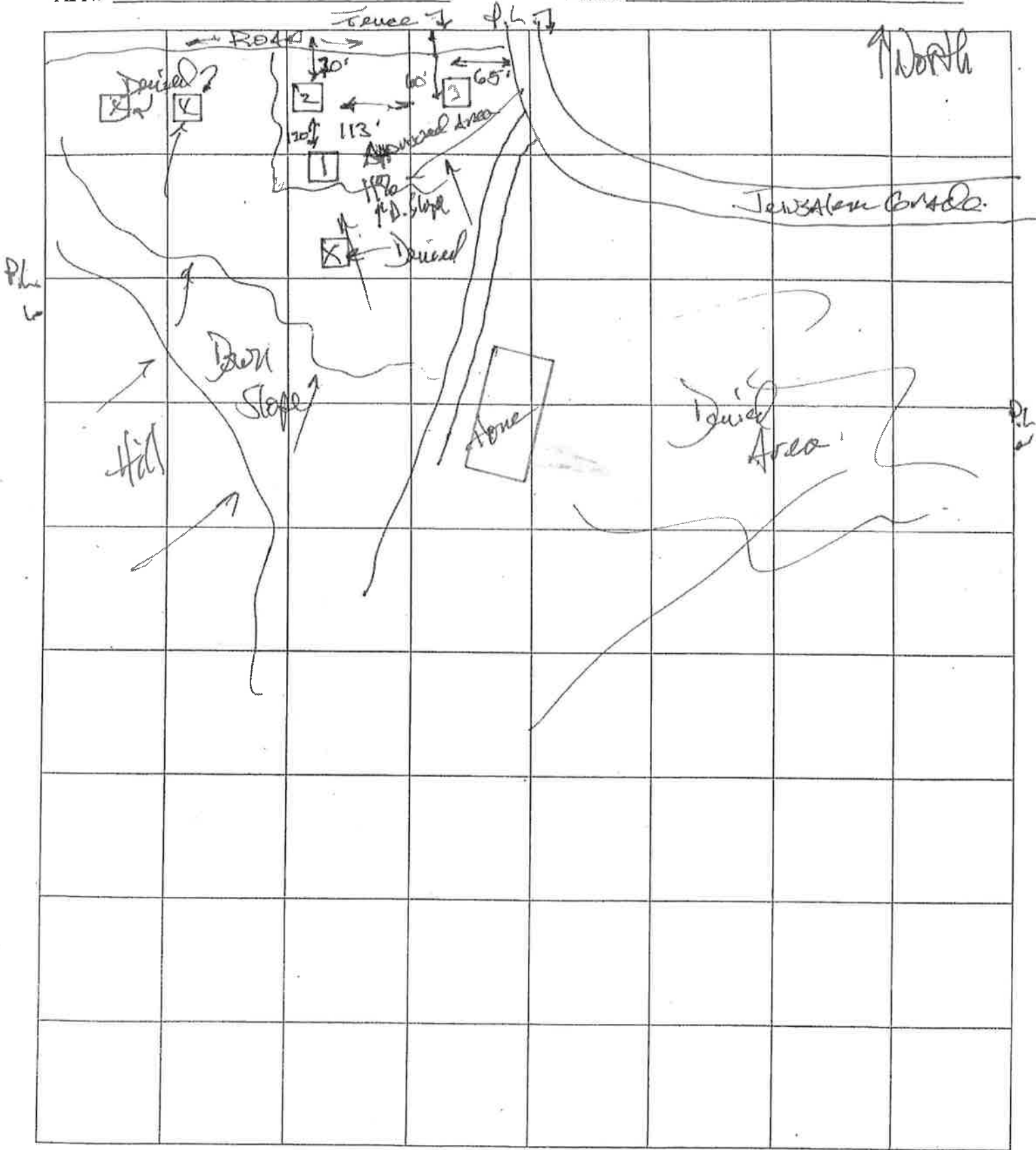
Other Site Notes _____

APPLICANT: Aggie Dairy

EVALUATOR: John W. Egnore

APN: 013-017-36

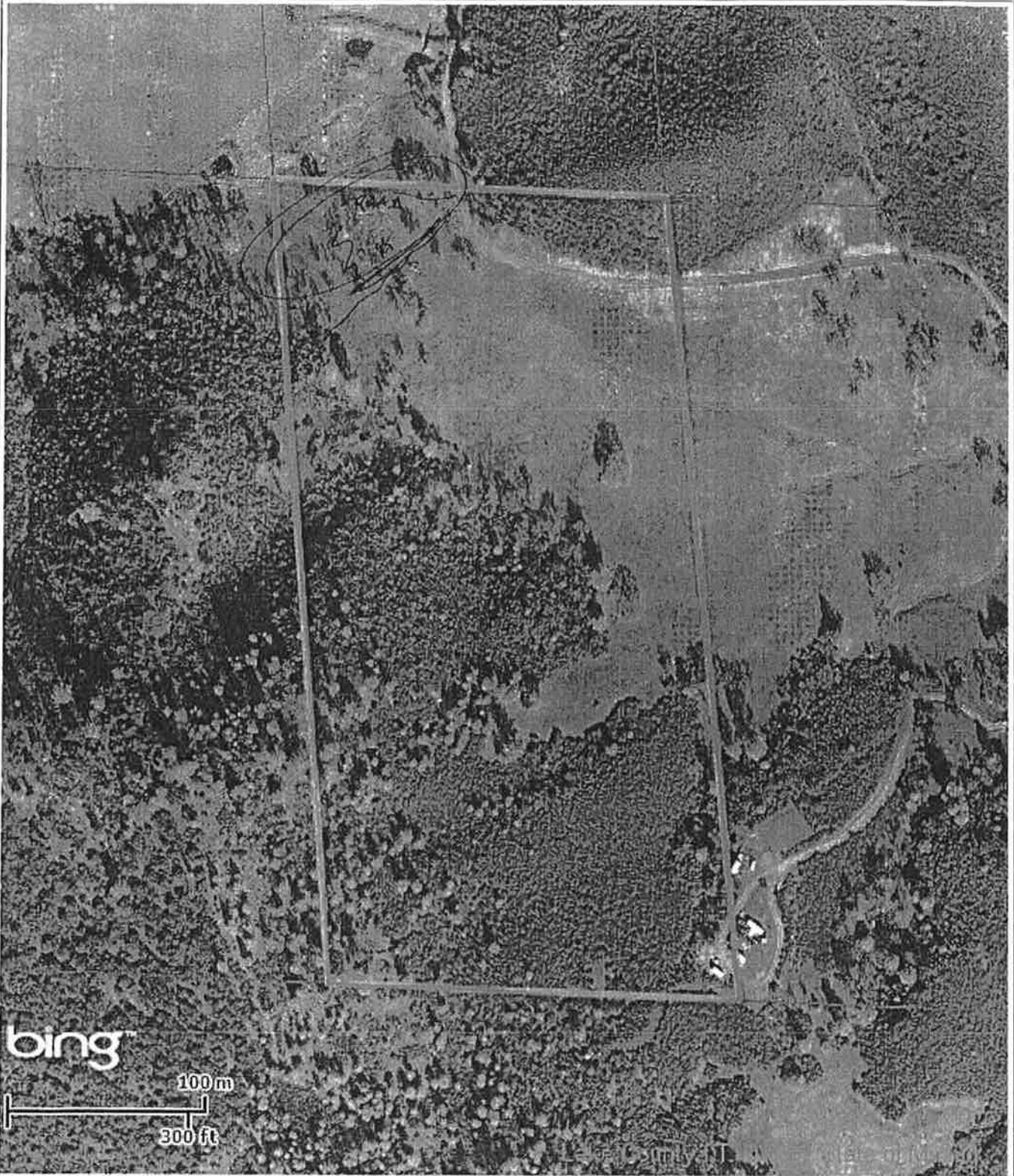
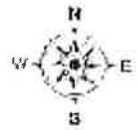
DATE: 1-16-14



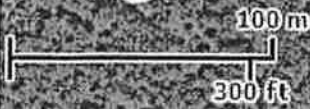


Lake County, CA

013-017-36



bing



All parcel boundaries are approximate. Discrepancies in acreage, shape and location are common. This map is not a legal survey document to be used in single site determinations. Consult your deed for a legal parcel description. <http://gispubinfo.co.lake.ca.us/mexviewer>

Printed: 12/11/13 8:05:54 AM

013-017-36

The free Adobe Reader may be used to view and complete this form. However, software must be purchased to complete, save, and email a saved form.

File Original with DWRR

Page 1 of 1
 Owner's Well Number 1
 Date Work Began 6-20-19
 Local Permit Agency LAKE County Environmental Health
 Permit Number WES179

State of California
Well Completion Report
 Refer to Instruction Pamphlet
 No. 30000000

Date Work Ended 6-25-19
 Permit Date 5-16-19

DWRR Use Only - Do Not Fill In

State Well Number/ Site Number _____

Latitude _____ Longitude _____

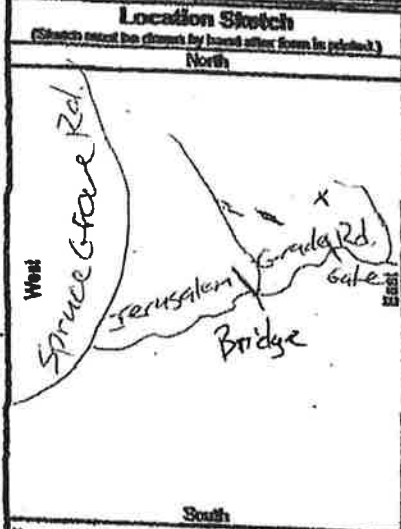
APN/RES/Other _____

Geologic Log		
Orientation	Vertical	Horizontal
Drilling Method	<input checked="" type="radio"/> Air Rotary	<input type="radio"/> Angle Spud
Drilling Fluid		
Depth from Surface	Feet to	Description
		Describe material, grain size, color, etc.
0	20	Brown Clay
20	60	sandstone / Black shale
60	90	Dark Grey sandstone / calcite
90	100	Black shale
100	140	sandstone / calcite
140	190	Black shale / sandstone 50/50
190	200	Black sandstone
200	220	Black shale
220	240	Black sandstone
240	295	Black sandstone / Black shale
295	305	Grey waxy serpentine

Total Depth of Boring 305 Feet
 Total Depth of Completed Well 300 Feet

Well Owner
 Name Justin Hamme
 Mailing Address P.O. Box 44
 City Fulton State CA Zip 95461

Well Location
 Address 25372 Jerusalem Grade Rd.
 City Middle town County LAKE
 Latitude _____ N Longitude _____ W
 Datum _____ Dec. Lat. _____ Dec. Long. _____
 APN Book 013 Page 017 Parcel 36
 Township _____ Range _____ Section _____



Activity

New Well
 Modification/Repair
 Deepen
 Other
 Destroy
Describe procedures and materials used: WELDRACLOG

Planned Uses

Water Supply
 Domestic Public
 Irrigation Industrial

Cathodic Protection
 Dewatering
 Heat Exchange
 Injection
 Monitoring
 Remediation
 Sparging
 Test Well
 Vapor Extraction
 Other

Water Level and Yield of Completed Well

Depth to first water 40' (Feet below surface)
 Depth to Static _____
 Water Level 20' (Feet) Date Measured 6-24-19
 Estimated Yield 5 (GPM) Test Type Air Lift
 Test Length 2 HRS (Hours) Total Drawdown _____ (Feet)
 *May not be representative of a well's long term yield.

Casings							Annular Material				
Depth from Surface	Borehole Diameter	Type	Material	Wall Thickness	Outside Diameter	Screen Type	Slot Size	Depth from Surface	Fill	Description	
Feet to	(Inches)			(Inches)	(Inches)		(Inches)	Feet to			
0	40	F480	PVC	1/4"	5"	Blank	-	0	1	Concrete	SEAL
40	300	F480	PVC	1/4"	5"	Perfor	1035	1	21	Bentonite	SEAL
"	"	"	"	"	"	"	"	21	300	5/16" Pea	Gravel Pack

- Attachments**
- Geologic Log
 - Well Construction Diagram
 - Geophysical Log(s)
 - Soil/Water Chemical Analyses
 - Other _____
- Attach additional information, if it exists.

Certification Statement

I, the undersigned, certify that this report is complete and accurate to the best of my knowledge and belief.

Name Will Peterson Well Drilling
 Person, Firm or Corporation
P.O. Box 695
 Address Kelseyville City CA State 95451 Zip
 Signed Will Peterson
 C-67 Licensed Water Well Contractor
 Date Signed 6-26-19 License Number 1009053



LAKE COUNTY HEALTH SERVICES DEPARTMENT
 ENVIRONMENTAL HEALTH DIVISION
 922 BEVINS COURT, LAKEPORT, CA 95453
 PHONE: (707) 263-1164 FAX: (707) 263-1681

WELL PERMIT APPLICATION

SEE LAKE COUNTY ORDINANCE NO. 1823 FOR WELL CONSTRUCTION, DESTRUCTION & REPAIR REQUIREMENTS

JOB LOCATION ADDRESS: 25372 Jerusalem Grade Rd.
 Assessor's Parcel Number: 013-017-316 Phone: (707) 545-3222
 Property Owner: Justin Hammer City: Middletown
 Mailing Address: PO. Box 44, Fulton CA State/Zip: CA 95461

WELL DRILLER: Will Peterson Well Drilling
 Mailing Address: PO Box 1695 City/State/Zip: Kelseyville CA 95451
 CA C-57 License Number: 1009053 Phone: (707) 277-0103
 Well Driller Print Name: Will Peterson I HEREBY AFFIRM UNDER PENALTY OF PERJURY that I am licensed under the provisions of Chapter 9 of Division 3 of the Business and Professions Code, and my license is in full force and effect.
 WELL DRILLER'S SIGNATURE: [Signature] Date: 5-1-19

TYPE OF WORK: New Well Reconstruction Destruction Test Well
 Soil Boring/Hydropunch Other: _____

PROPOSED USE: Domestic Public Monitoring Agriculture
 Test Well Other: _____

CONSTRUCTION: Cable Tool Mud Rotary Air Rotary Other: _____
 Casing Type & Standard: F480 PCC Wall Thickness: 1/4" Diameter: 4 1/2"
 Proposed Depth of Seal: 20 Bore Hole Diameter: 9" Variance: _____

SEAL MATERIAL: Concrete Bentonite Clay Sand-Cement Grout
 Neat Cement Other: _____

PLEASE COMPLETE ALL ATTACHMENTS.
THIS PERMIT IS VALID FOR ONE YEAR FROM DATE OF ISSUANCE
 Drillers please provide a minimum of 12-hour notice prior to sealing the annular space.

FOR OFFICE USE ONLY

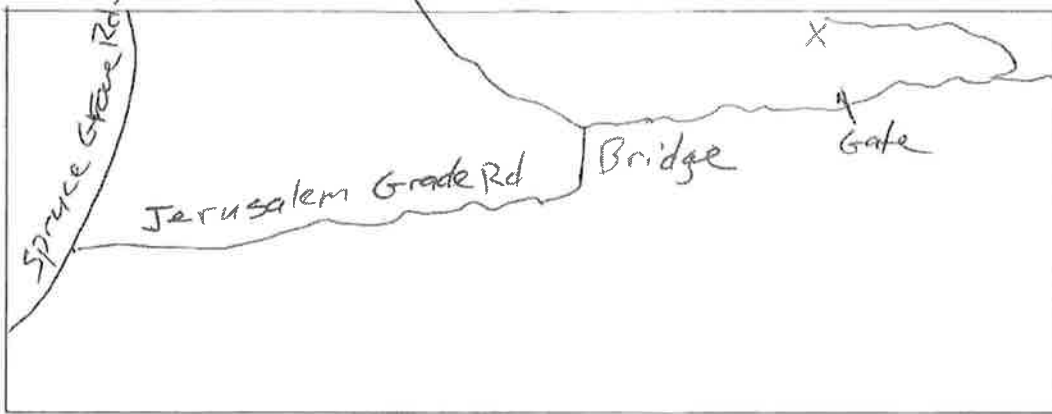
Date Received: 5/1/19 Fee Paid: 295.00 Receipt Number: 100011750
RP0010695
 Well Driller License # Verified By: [Signature]
 100 Year Flood Plain? No Yes Zone: D Elevation: _____
 Water Resources: Flood Check Database Minimum Casing Height: \geq One foot above the elevation of the 100-year flood plain elevation or above any known condition of flooding by drainage or runoff from the surrounding land.
 Issued By: [Signature] Date: 5/16/19

Site #1 Seal Depth: _____ - _____ Feet Total Feet Below Ground Surface: _____ Well Boring
 Site #2 Seal Depth: _____ - _____ Feet Total Feet Below Ground Surface: _____ Destruct Boring
 Site #3 Seal Depth: _____ - _____ Feet Total Feet Below Ground Surface: _____ Destruct Boring
 Annular Seal Verified By: _____ Date: _____
 Destruction Verified By: _____ Date: _____
 Well Completion Report (Well Log) Date Received: _____ Initials: _____

WELL PERMIT NUMBER: WE-5179
WP0002948

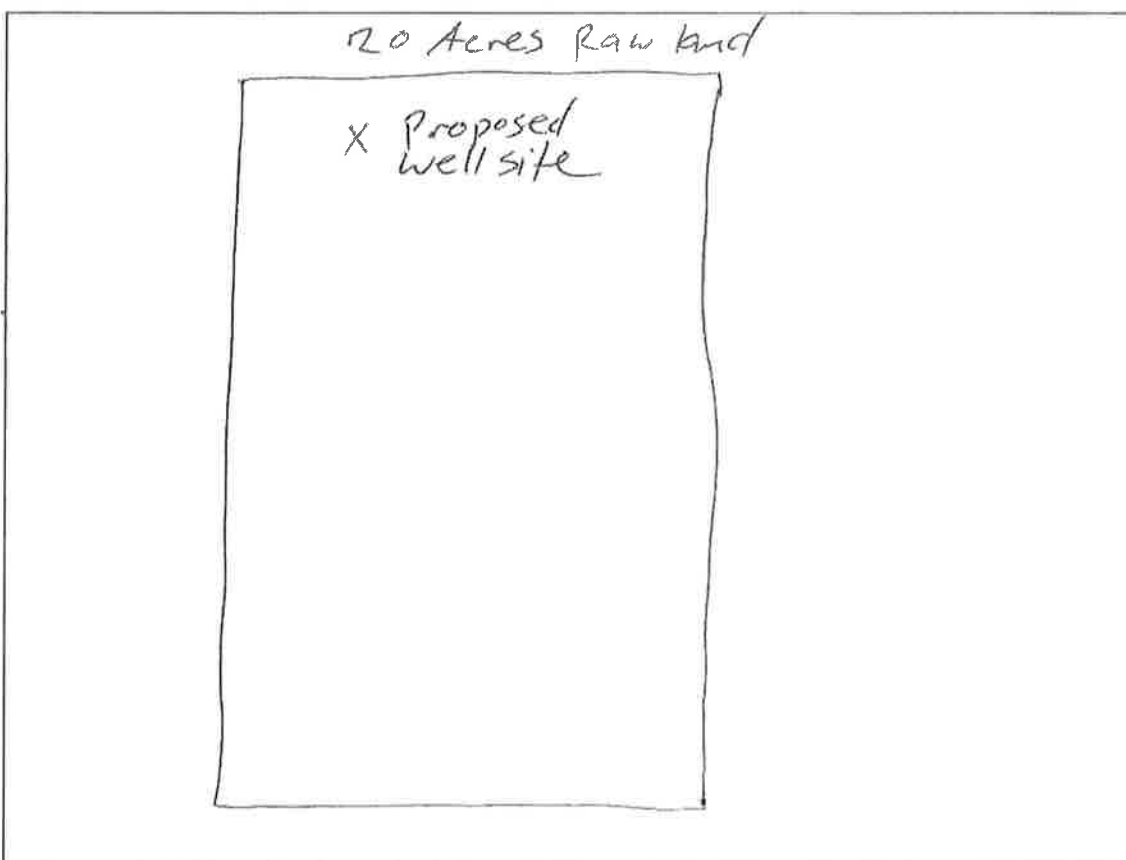
LOCATION MAP

DIRECTIONS (Please include mile post markers, landmarks, nearest cross street, etc.):



DRAW TO SCALE ANY OF THE FOLLOWING WITHIN 200 FEET OF THE WELL.

- | | |
|--|--|
| 1. Well/wells existing and proposed | 6. Any storage or mixing area which involves Hazardous materials |
| 2. Property lines | 7. Any structures |
| 3. Easements or roads | 8. North/South Arrow |
| 4. All existing and proposed sewage disposal systems within 100 feet, adjacent parcels included. | 9. Show road or street with name/reference point |
| 5. Any facilities or piping designed to carry or hold sewage. | 10. Photo Map if available |
| | 11. http://gispublic.co.lake.ca.us/flexviewer/index.html - highlight and paste in internet search box |



DRAWN TO THE SCALE OF _____




COUNTY OF LAKE

Community Development Department
Planning Division
255 N. Forbes, Courthouse - Third Floor
Lakeport Office (707) 263-2221 FAX 263-2225

WELL CLEARANCE

APN #: 013-017-36

I hereby acknowledge that this permit does not constitute a permit or grant of approval for development as defined by Sections 66418.1 and 66419 of the Subdivision Map Act. The property on which this well is to be located may not be considered a legal lot of record as defined by the Subdivision Map Act or Lake County Subdivision Ordinance.



Property Owner Signature

Justin Hamner

Property Owner Printed

DATE: 4/10/19



Denise Pomeroy
Health Services Director

Erin Gustafson
Public Health Officer

JUN 26 2019

Jasjit Kang
Environmental Health Director

COUNTY OF LAKE
HEALTH SERVICES DEPARTMENT
Division of Environmental Health
922 Bevins Court, Lakeport, CA 95459-9739
Telephone 707/263-1164 FAX: 263-1681



SEAL WITHOUT WITNESS

Permit Number: *WAE-5179*

Site Address: *25372 Jerusalem Grade Rd. Middletown*

Assessor's Parcel No: *013-017-36* :

Owner Name: *Justin Hammer*

Date: *6-25-19*

REASON FOR SEAL WITHOUT WITNESS:

Emergency Seal - Explain:

Inspector unable to witness

Other:

IMPERMEABLE LAYER in which annular space terminates:

Sanitary seal at a depth of 21' feet.

SEALANT USED: Bentonite chips with concrete cap

METHOD OF PLACEMENT: Poor down Hole, Mix concrete cap

I hereby certify that I have installed the annular seal in accordance with the provisions of the Lake County Well Ordinance and unless otherwise specified in the Lake County Well Ordinance, with the California Department of Water Resources Bulletin 74-81 or as modified by subsequent revisions or supplements.

DRILLING CONTRACTOR SIGNATURE: *Will Peterson*

COMPANY:

Will Peterson Well Drilling

LICENSE NO:

1009053

Our mission is to promote and protect the health of the people of Lake County through education and the enforcement of public health laws.

Our mission is to promote and protect the health of the people of Lake County through education and the enforcement of public health laws.