

# CITY OF SANTA ROSA IN-N-OUT BURGER

## APPENDIX B FIGURES B-1 to B-8

PREPARED BY:

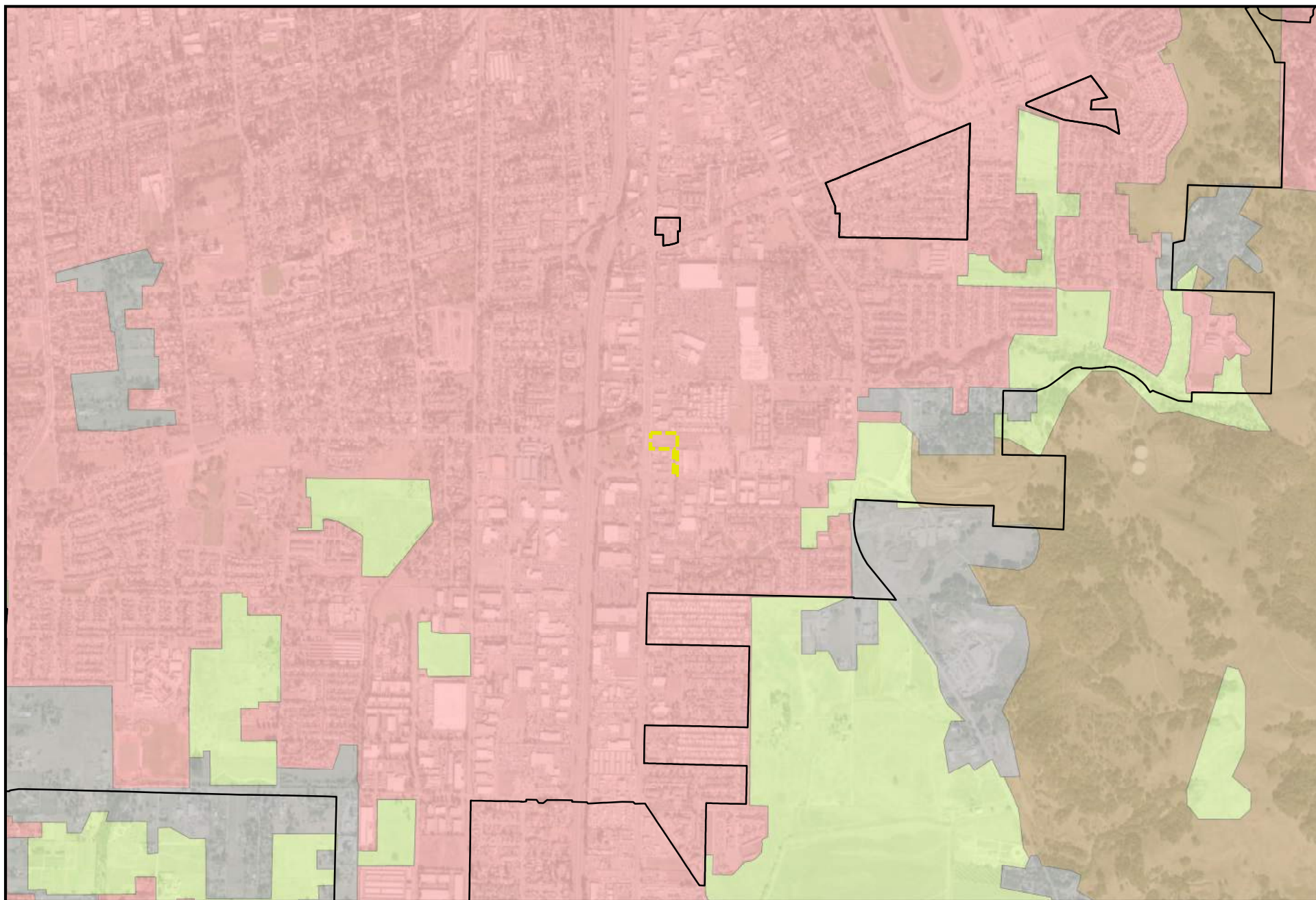


Metropolitan Planning Group  
499 Humboldt St  
Santa Rosa, CA 95404

November 2020

- B-1: IMPORTANT FARMLAND CITYWIDE
- B-2: LAND USE COVER
- B-3: FAULTS
- B-4: ALQUIST-PRIOLO FAULT ZONES
- B-5: SHAKING HAZARD
- B-6: LIQUEFACTION SUSCEPTIBILITY
- B-7: FIRE HAZARD SEVERITY ZONES
- B-8: FLOOD HAZARD ZONES

FIGURE B-1



### IN-N-OUT BURGER: IMPORTANT FARMLAND

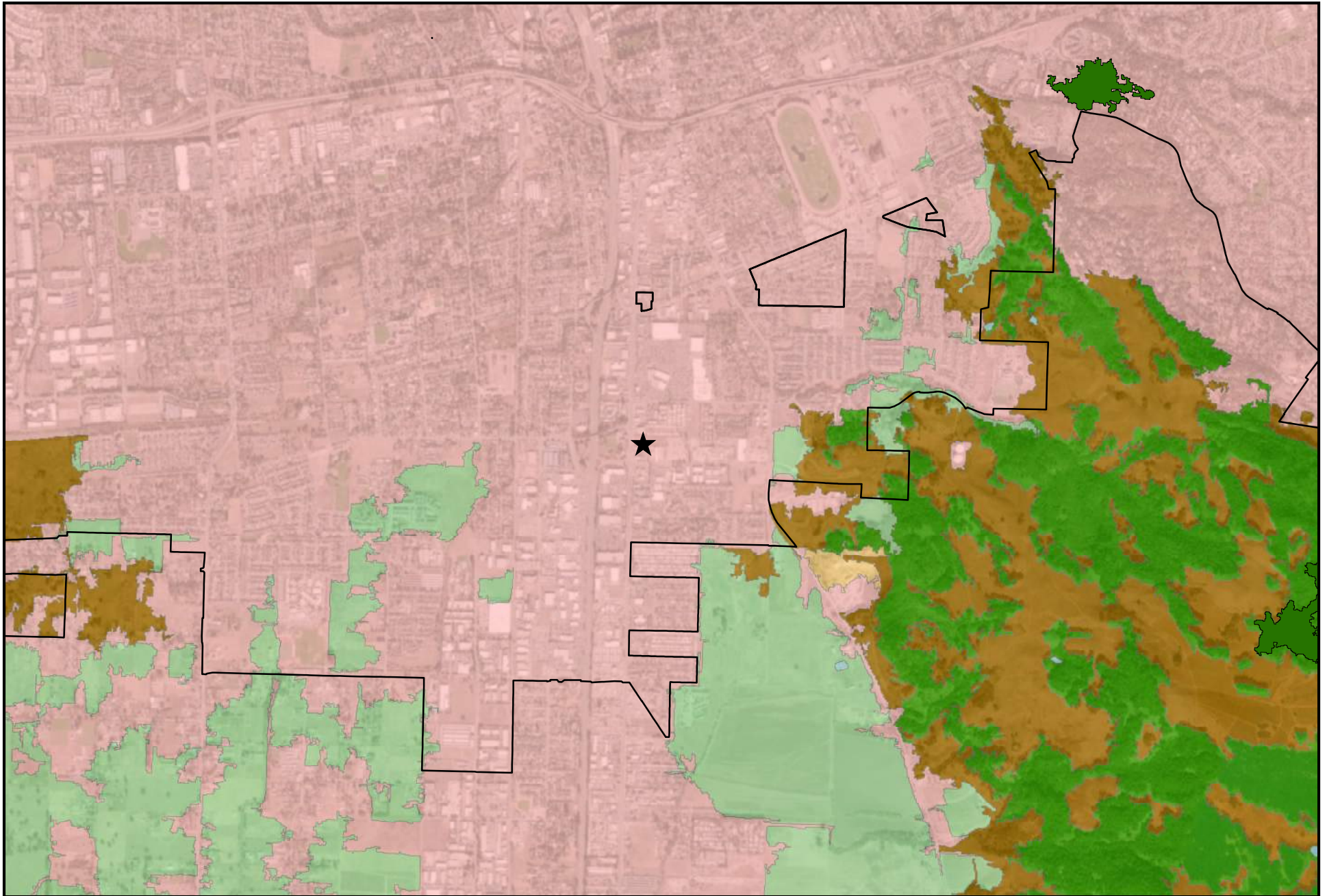
- FARMLAND OF LOCAL IMPORTANCE (L)
- GRAZING LAND (G)
- URBAN AND BUILT-UP LAND (D)
- OTHER LAND (X)
- CITY OF SANTA ROSA
- PROJECT SITE

0 0.15 0.3 0.6 Miles

Data source: Sonoma County GIS; CA Dept. of Conservation 2016



FIGURE B-2



### IN-N-OUT BURGER: LAND COVER CLASSIFICATION

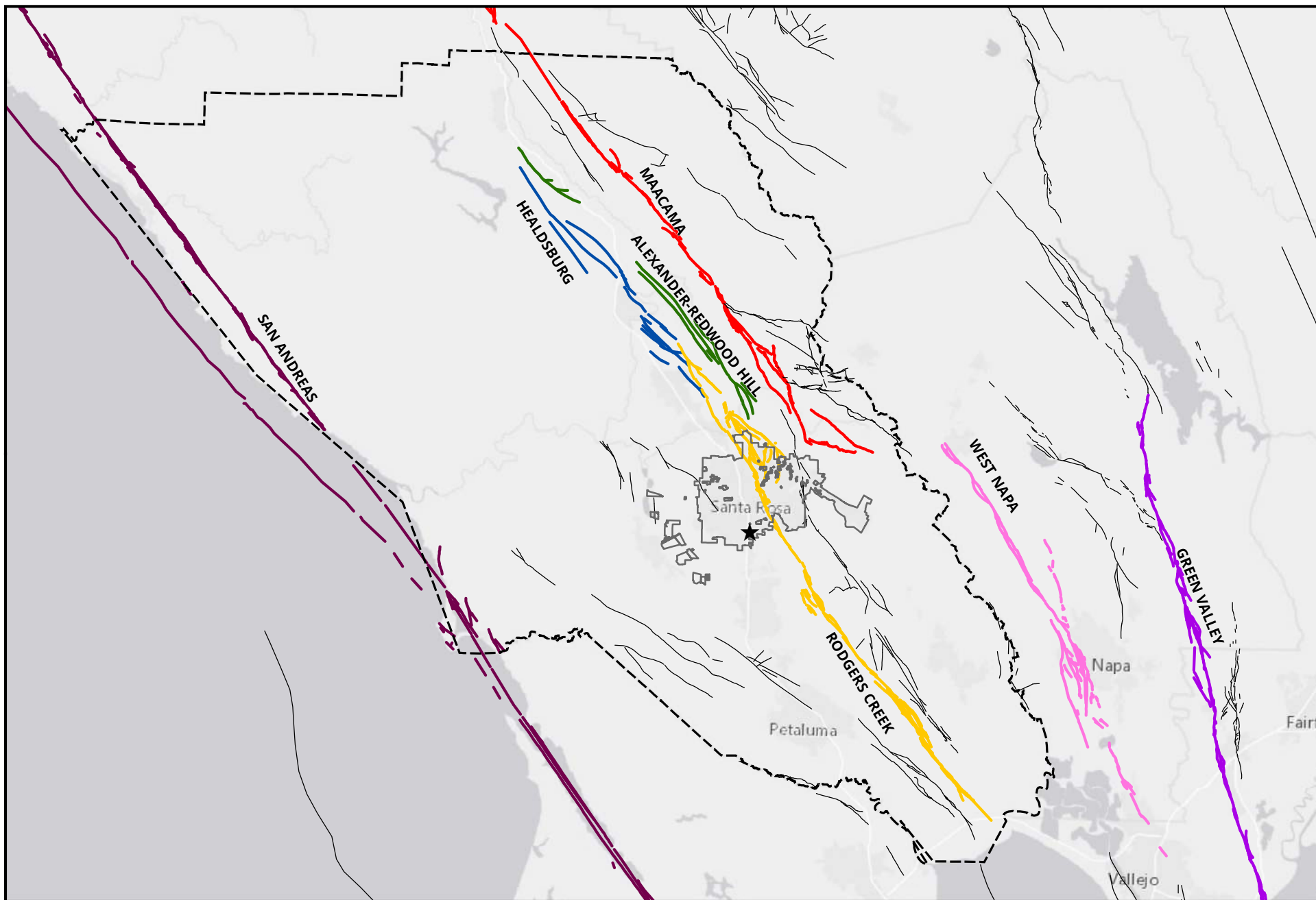
0 0.225 0.45 0.9 Miles

Data source: Sonoma County GIS; USDA, Forest Service, 2007; ESRI Basemap

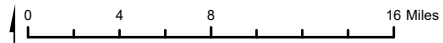
- |                   |                        |                        |
|-------------------|------------------------|------------------------|
| FOREST LAND       | BARREN LAND            | PRODUCTIVE FOREST SITE |
| AGRICULTURAL LAND | URBAN OR BUILT-UP LAND | CITY OF SANTA ROSA     |
| RANGELAND         | WATER                  | PROJECT SITE           |



**FIGURE B-3**



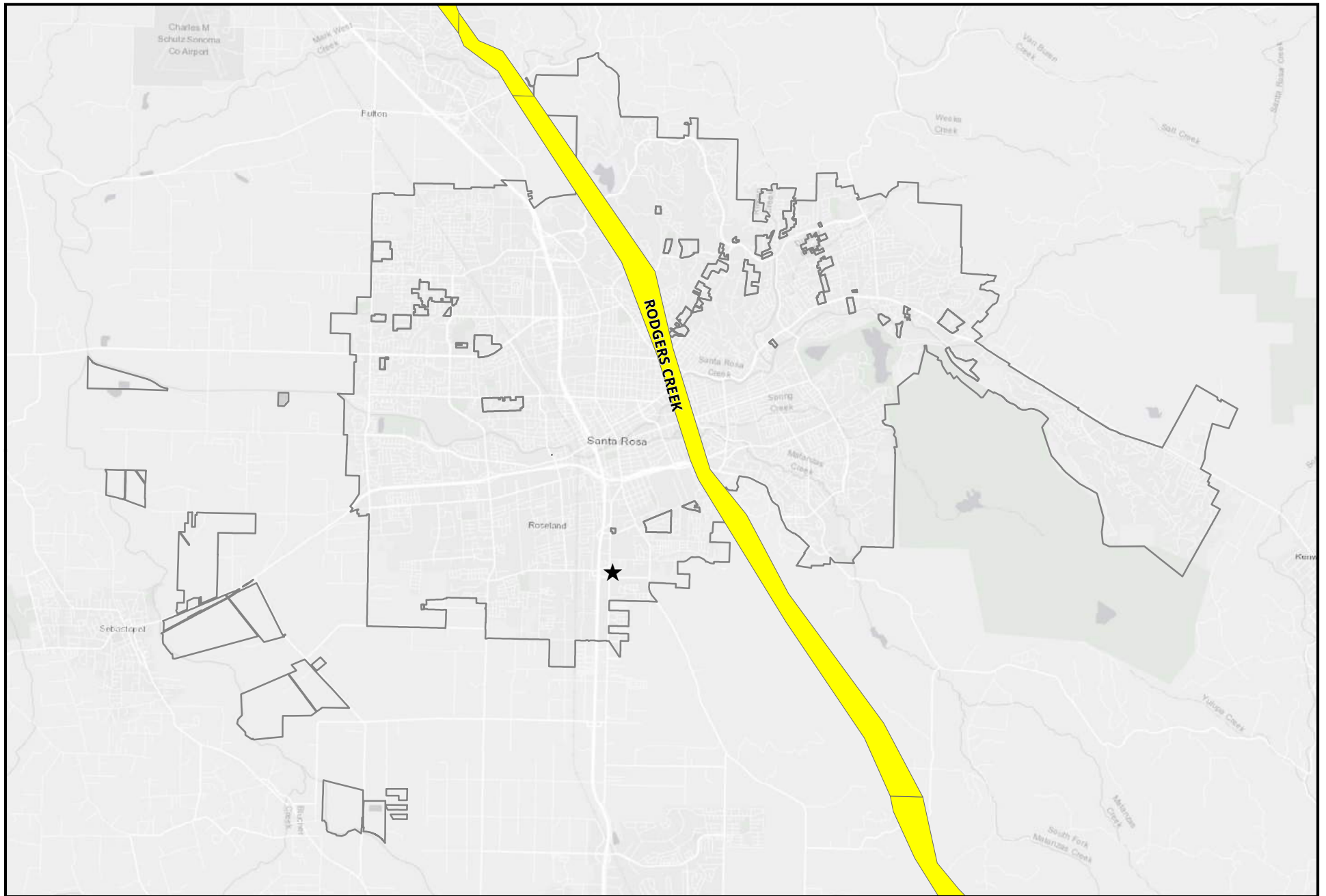
**IN-N-OUT BURGER: FAULTS**



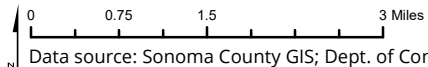
Data source: Sonoma County GIS; USGS, CA Geological Survey, 2006 updated 2018; ESRI basemap

- |                                |                       |                      |
|--------------------------------|-----------------------|----------------------|
| — OTHER QUATERNARY FAULTS      | — MAACAMA FAUL        | ☐ CITY OF SANTA ROSA |
| — ALEXANDER-REDWOOD HILL FAULT | — RODGERS CREEK FAULT | ☐ SONOMA COUNTY      |
| — GREEN VALLEY FAULT           | — SAN ANDREAS FAULT   | ★ PROJECT SITE       |
| — HEALDSBURG FAULT             | — WEST NAPA FAULT     |                      |





### IN-N-OUT BURGER: ALQUIST-PRIOLO FAULT ZONES



Data source: Sonoma County GIS; Dept. of Conservation, CA Geological Survey; ESRI basemap




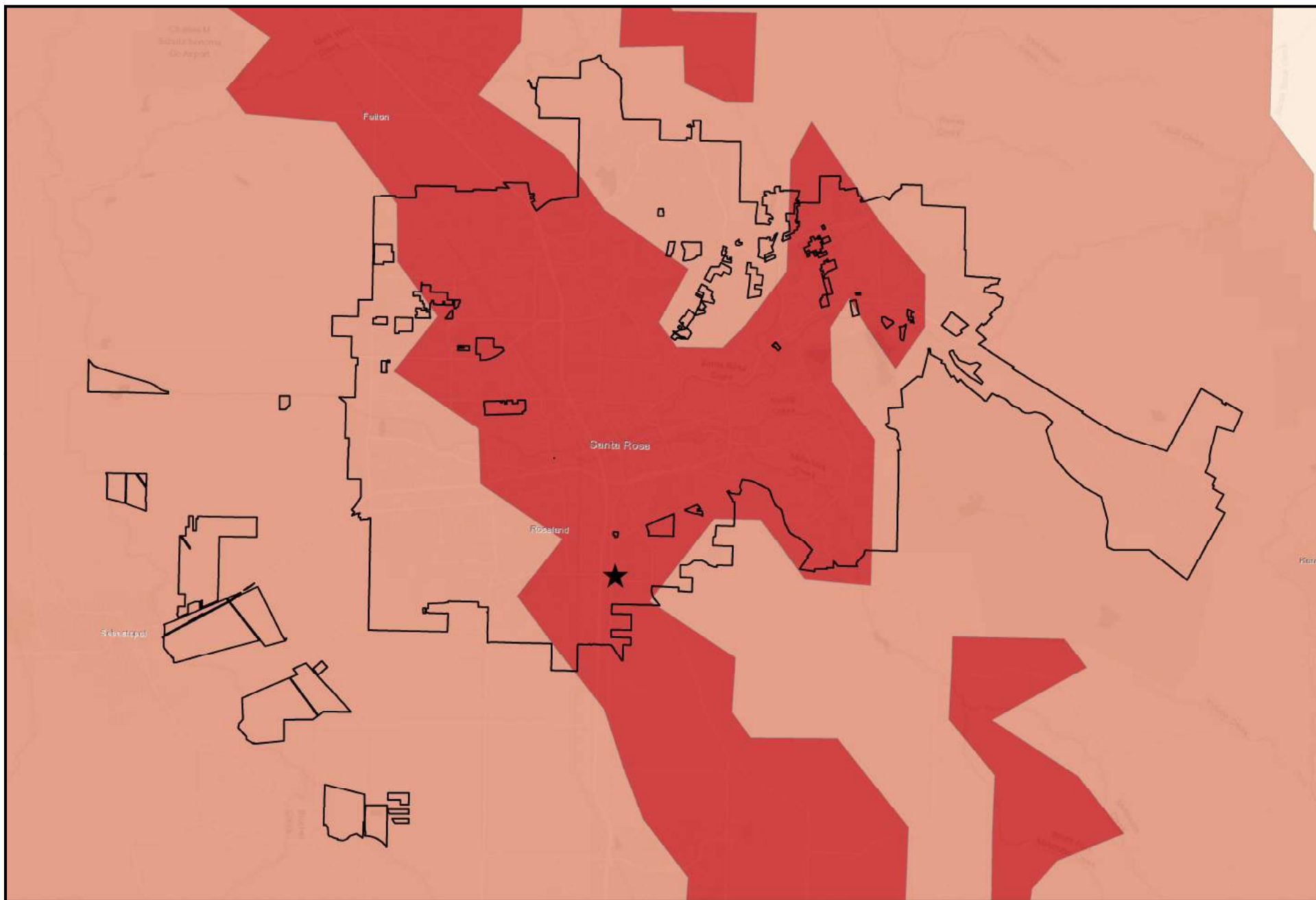
-  ALQUIST-PRIOLO FAULT ZONES
-  PROJECT SITE
-  CITY OF SANTA ROSA



FIGURE B-5







**IN-N-OUT BURGER: SHAKING HAZARD**

0 0.75 1.5 3 Miles

Data source: Sonoma County GIS; Association of Bay Area Governments; CISN; ESRI Basemap

**MODIFIED MERCALLI INTENSITY MEASURE**

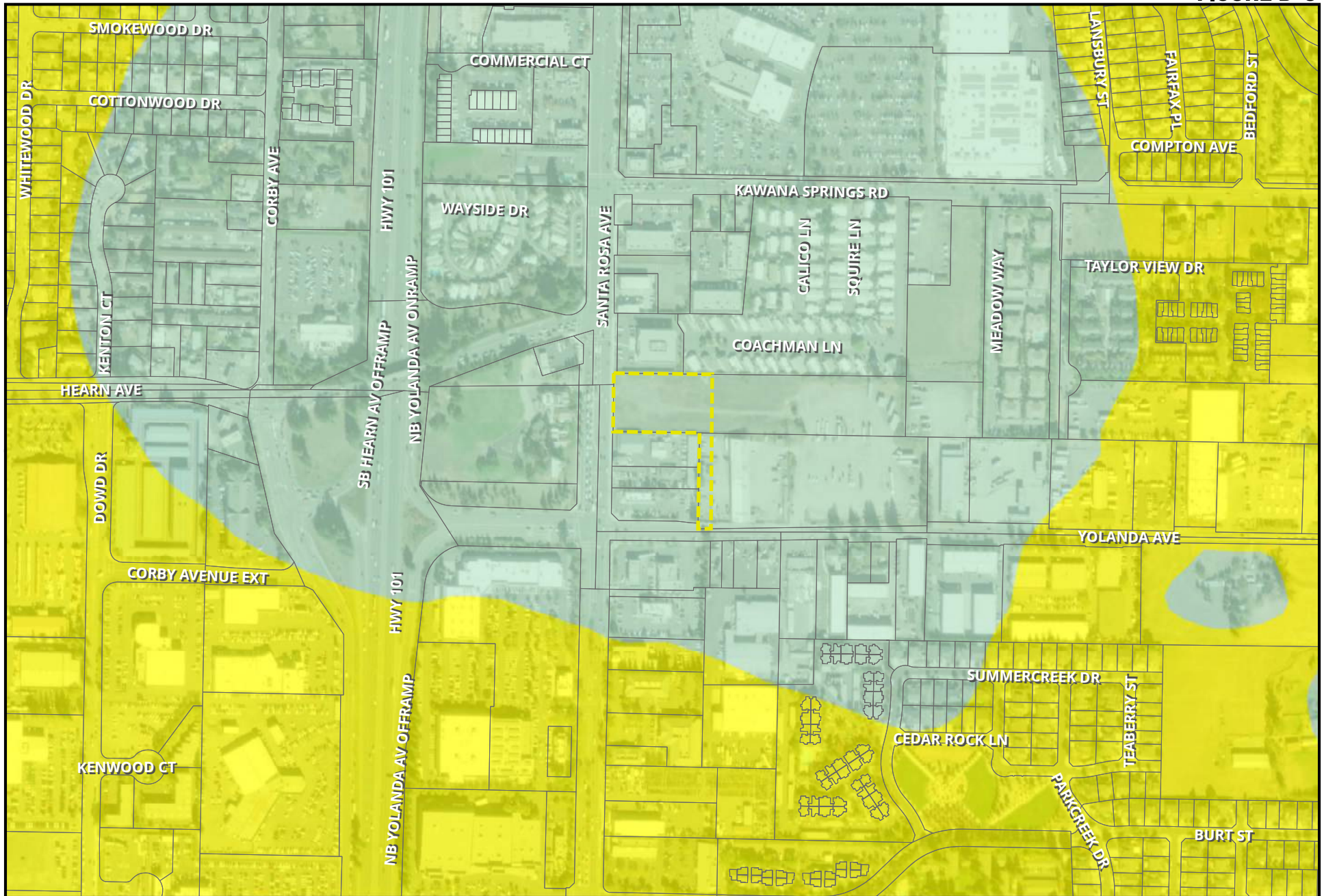
-  7 - STRONG
-  8 - VERY STRONG
-  9 - VIOLENT

 CITY OF SANTA ROSA

 PROJECT SITE



FIGURE B-6



### IN-N-OUT BURGER: LIQUEFACTION SUSCEPTIBILITY

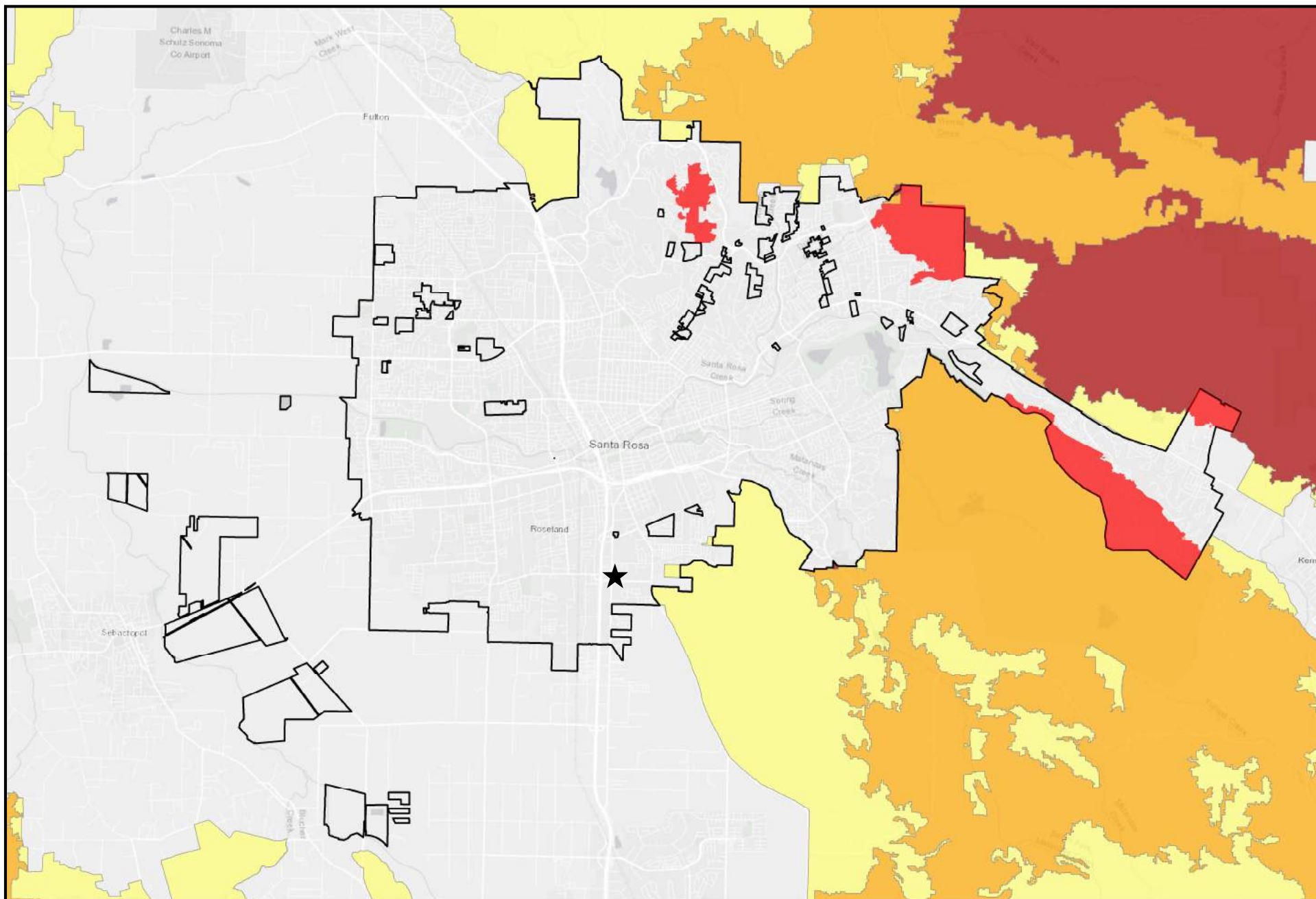
- VERY LOW SUSCEPTIBILITY
- MODERATE SUSCEPTIBILITY
- PROJECT SITE

0 0.04 0.08 0.16 Miles

Data source: Sonoma County GIS; USGS; ESRI Basemap



FIGURE B-7



### IN-N-OUT BURGER: FIRE HAZARD SEVERITY ZONES

0 0.75 1.5 3 Miles

Data source: Sonoma County GIS; CA Dept. of Forestry and Fire Protection; ESRI Basemap

#### FHSZ IN STATE RESPONSIBILITY AREAS

- MODERATE
- HIGH
- VERY HIGH

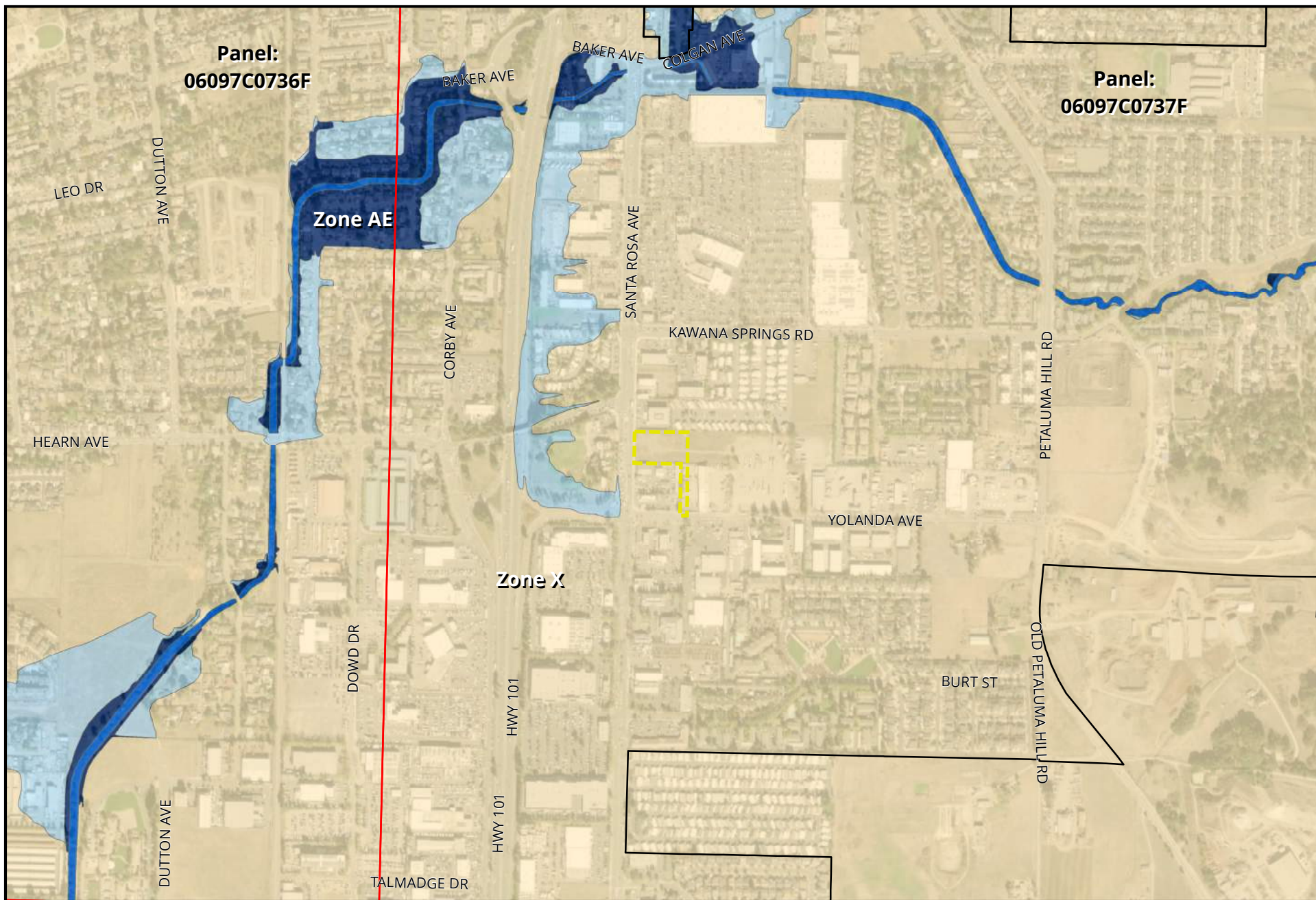
#### VHFS IN LOCAL RESPONSIBILITY AREA

- CITY OF SANTA ROSA
- PROJECT SITE





FIGURE B-8



**IN-N-OUT BURGER: FEMA NATIONAL FLOOD HAZARD**

0 0.075 0.15 0.3 Miles

Data source: Sonoma County GIS; FEMA 2017; ESRI Basemap

- 100 YEAR FLOODPLAIN (AE)
- FLOODWAY (AE)
- 500 YEAR FLOODPLAIN (X)
- AREA OF MINIMAL FLOOD HAZARD (X)

- FIRM PANELS
- CITY OF SANTA ROSA
- PROJECT SITE

