

Appendix B

Native Tree Protection Report

TREE REPORT

July 18, 2019

Project:

Westwood Presbyterian Church North & South Campuses /
Belmont Village Assisted Living Facility
10822 Wilshire Blvd. + 10812 Ashton Ave.
Los Angeles, CA 90024

Prepared for:

Belmont Village
8554 Katy Freeway
Houston, TX 77024

Prepared by:

Land Images Landscape Architecture
6605 Hollywood Blvd., Suite 210
Los Angeles, CA 90028



Purpose of Report:

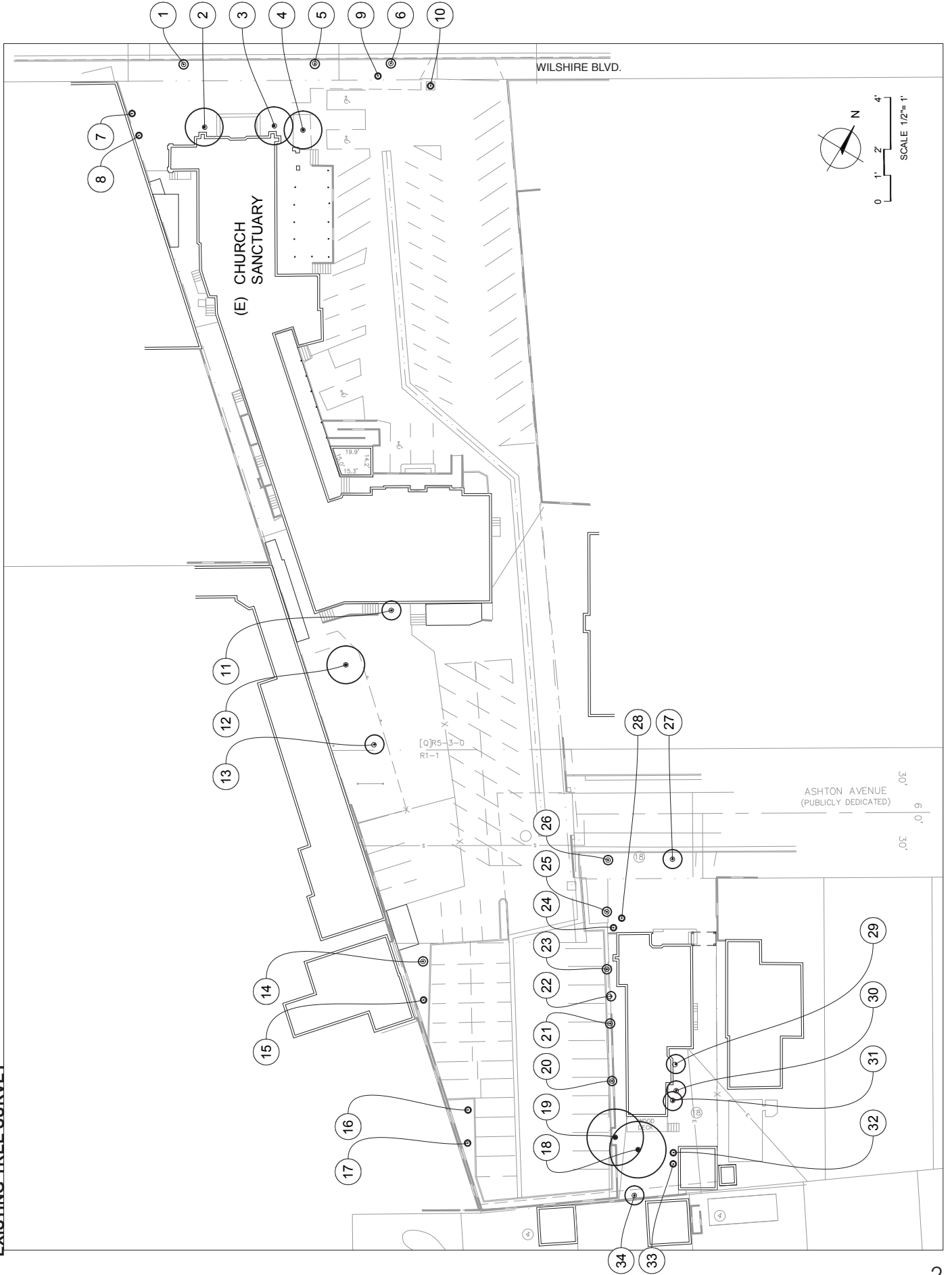
This report has been prepared to evaluate the on-site and off-site trees, identify any Protected Species, and state the intended mitigation measures for the proposed tree removals.

Evaluation:

Each tree has been assigned an identification number per the Existing Tree Survey (see page 2). This number, along with the species, common name, diameter at breast-height, tree height, health and appearance rating are shown on the Existing Tree Chart (see below). Disposition (removal, preserve, or relocate) and whether the tree is a Protected Species (per LAMC Sec. 46.00) are also indicated on the chart.

EXISTING TREE CHART						
G=Good, F=Fair, P=Poor, D=Dead or Dying						
TREE	SPECIES	DBH (in)	HEIGHT (ft)	HEALTH	STRUCTURE	CURRENT IMPACT CATEGORY
①	<i>Magnolia grandiflora</i>	8	30	G	F	PRESERVE
②	<i>Juniperus chinensis</i>	22	25	G	G	REMOVE FOR CONSTRUCTION
③	<i>Juniperus chinensis</i>	22	25	G	G	REMOVE FOR CONSTRUCTION
④	<i>Schinus terebinthifolius</i>	24	30	G	F	REMOVE FOR CONSTRUCTION
⑤	<i>Magnolia grandiflora</i>	6	20	G	F	REMOVE FOR CONSTRUCTION
⑥	<i>Magnolia grandiflora</i>	6	20	G	F	REMOVE FOR CONSTRUCTION
⑦	<i>Podocarpus gracilior</i>	4	15	G	F	REMOVE FOR CONSTRUCTION
⑧	<i>Podocarpus gracilior</i>	4	15	G	F	REMOVE FOR CONSTRUCTION
⑨	<i>Brahea armata</i>	20	20	G	G	REMOVE FOR CONSTRUCTION
⑩	<i>Bauhinia variegata</i>	24	15	G	G	REMOVE FOR CONSTRUCTION
⑪	<i>Juniperus chinensis</i>	24	20	G	G	REMOVE FOR CONSTRUCTION
⑫	<i>Platanus racemosa</i> *	24	35	G	G	REMOVE FOR CONSTRUCTION
⑬	<i>Morus alba</i>	14	15	G	F	REMOVE FOR CONSTRUCTION
⑭	<i>Jacaranda mimosifolia</i>	6	15	G	F	REMOVE FOR CONSTRUCTION
⑮	<i>Jacaranda mimosifolia</i>	4	15	G	F	REMOVE FOR CONSTRUCTION
⑯	<i>Jacaranda mimosifolia</i>	4	10	G	F	REMOVE FOR CONSTRUCTION
⑰	<i>Jacaranda mimosifolia</i>	4	10	G	F	REMOVE FOR CONSTRUCTION
⑱	<i>Eucalyptus sp.</i>	36	50	G	F	REMOVE FOR CONSTRUCTION
⑲	<i>Eucalyptus sp.</i>	36	50	G	F	REMOVE FOR CONSTRUCTION
⑳	<i>Jacaranda mimosifolia</i>	6	12	G	F	REMOVE FOR CONSTRUCTION
㉑	<i>Jacaranda mimosifolia</i>	6	12	G	F	REMOVE FOR CONSTRUCTION
㉒	<i>Pittosporum undulatum</i>	6	12	G	F	REMOVE FOR CONSTRUCTION
㉓	<i>Jacaranda mimosifolia</i>	6	12	G	F	REMOVE FOR CONSTRUCTION
㉔	<i>Syagrus Romanzoffianum</i>	4	20	G	G	REMOVE FOR CONSTRUCTION
㉕	<i>Syagrus Romanzoffianum</i>	6	20	G	G	REMOVE FOR CONSTRUCTION
㉖	<i>Jacaranda mimosifolia</i>	10	15	G	F	REMOVE FOR CONSTRUCTION
㉗	<i>Jacaranda mimosifolia</i>	6	15	G	F	REMOVE FOR CONSTRUCTION
㉘	<i>Syagrus Romanzoffianum</i>	4	20	G	G	REMOVE FOR CONSTRUCTION
㉙	<i>Podocarpus gracilior</i>	12	15	G	G	REMOVE FOR CONSTRUCTION
㉚	<i>Schefflera actinophylla</i>	12	20	G	F	REMOVE FOR CONSTRUCTION
㉛	<i>Podocarpus gracilior</i>	12	15	G	G	REMOVE FOR CONSTRUCTION
㉜	<i>Pittosporum tobira</i>	4	10	G	F	REMOVE FOR CONSTRUCTION
㉝	<i>Pittosporum tobira</i>	4	10	G	F	REMOVE FOR CONSTRUCTION
㉞	<i>Ligustrum sp.</i>	10	20	G	P	REMOVE FOR CONSTRUCTION
	*Los Angeles "Protected Tree"					

EXISTING TREE SURVEY



Findings:

There are 34 trees on site. Tree #1, a non-protected street tree, will be retained.

The other trees are to be removed for construction. Tree #12 is a Protected Tree per LAMC Sec. 46.00. Trees #5 and #6 are non-protected street trees. The remaining 30 are non-protected private property trees. Note that 15 of the trees to be removed measure 8 or inches or more (DBH) while 18 measure less than 8 inches.

Requirements:

Per City of Los Angeles Board of Public Works and Urban Forestry policies, tree removals must be replaced at a 2:1 basis for street trees and a 4:1 basis for protected private property trees.

Per Wilshire-Westwood Scenic Corridor Specific Plan, street trees must be 48" box minimum size and note 1 tree/ 30 ft. planting requirement to satisfaction of Urban Forestry.

Per City of Los Angeles Tree Protection Ordinance (177404), trees planted to replace a Protected Tree must also be of a Protected Tree species.

Mitigation:

Eight mitigation trees are required for this project. Of these, 4 must be 48" box street trees (species per Urban Forestry) and 4 must be minimum 24" box and from a Protected Tree species.

Although 4 street trees are required pursuant to all applicable regulations, the Urban Forestry Tree Spacing Guidelines require offsets from street lights, crosswalks, etc. that do not permit more than 3 additional street trees to be planted along the site's frontage. In such cases, Urban Forestry will chose another location to plant the 4th street tree, which is allowed by and consistent with all relevant City regulations.

See Mitigation Chart below and Tree Legend on sheet L-101 of landscape drawings.

MITIGATION CHART					
TYPE	# EXISTING	# TO REMOVE	REQUIRED # REPLACEMENT TREES	MIN. SIZE	SPECIES
Street Tree	3	2	4	48" BOX	PER URBAN FORESTRY
Protected Tree	1	1	4	24" BOX	PROTECTED TREE PER LAMC
Non-Protected Private Property Tree	30	30	0		
TOTAL REQUIRED MITIGATION TREES			8		