

# **Appendix F**

---

## Paleontological Records Search



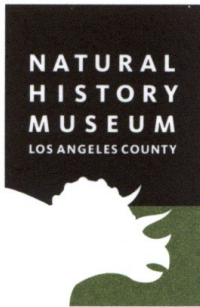
Natural History Museum  
of Los Angeles County  
900 Exposition Boulevard  
Los Angeles, CA 90007

tel 213.763.DINO  
www.nhm.org

Research & Collections

e-mail: [paleorecords@nhm.org](mailto:paleorecords@nhm.org)

August 14, 2020



Eyestone Environmental  
2121 Rosecrans Avenue, Suite 3355  
El Segundo, California 90245

Attn: Laura Rodriguez

re: Paleontological resources for the Cheval Blanc Beverly Hills Project in the City of  
Beverly Hills, California

Dear Laura:

I have conducted a thorough search of our paleontology collection records for the locality and specimen data for proposed development at the Cheval Blanc Beverly Hills Project in the City of Beverly Hills, California project area as outlined on the portion of the Los Angeles USGS topographic quadrangle map that you sent to me via e-mail on 12 August 2020. We do not have any fossil localities that lie directly within the proposed project area, but we do have fossil localities nearby from the same sedimentary deposits that occur in the proposed project area, either at the surface or at depth.

The following table shows the closest known localities in the collection of the Natural History Museum of Los Angeles County.

Locality Number	Location	Formation	Taxa	Depth
LACM VP 3355 & 3821	NE corner of the intersection of Wilshire Blvd. & Bedford Ave	Older alluvium (sand & clay)	Ungulata, Horse ( <i>Equus</i> )	~40 ft bgs; found during basement excavations for the Security Pacific Bank Building)

LACM IP 5051	Intersection of Santa Monica Blvd. & Avenue of Stars	Palos Verdes Sand equivalent	Shark (unspecified), wood, invertebrates	unrecorded (collected during excavation for twin towers)
LACM IP 25992	Constellation Blvd. between Avenue of the Stars and Century Park East	Palos Verdes Sand	Invertebrates (unspecified)	100 ft bgs
LACM VP 7673	Intersection of Rosewood Ave. & Westbourne Dr	Undetermined (claystone; Pleistocene)	Horse ( <i>Equus</i> )	Unrecorded (collected during Hollyhills Drain project)
LACM VP 7966	Intersection of Rosewood Ave. & Westbourne Dr	undetermined (claystone; Pleistocene)	Horse ( <i>Equus</i> )	Unrecorded (collected during Hollyhills Drain project)
LACM VP 7672	Intersection of 3rd St. & San Vicente Blvd	Undetermined (claystone; Pleistocene)	?Deer ( <i>Cervidae</i> ); Proboscidea	Unrecorded (collected during Hollyhills Drain project)

*VP, Vertebrate Paleontology; IP, Invertebrate Paleontology; bgs, below ground surface*

This records search covers only the records of the Natural History Museum of Los Angeles County (“NHMLA”). It is not intended as a paleontological assessment of the project area for the purposes of CEQA or NEPA. Potentially fossil-bearing units are present in the project area, either at the surface or in the subsurface. As such, NHMLA recommends that a full paleontological assessment of the project area be conducted by a paleontologist meeting Bureau of Land Management or Society of Vertebrate Paleontology standards.

Sincerely,



Alyssa Bell, Ph.D.  
Natural History Museum of Los Angeles County

enclosure: invoice