





Existing



proposed 150' tower

Proposed



Existing



Proposed



Existing



proposed 150' tower

Proposed



Existing



proposed 150' tower - not visible beyond ridge

Proposed

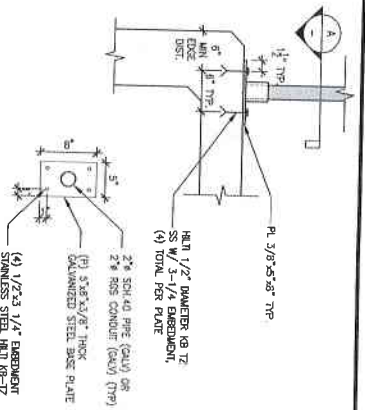
Incline Partners LLC

Thorburn Communications Site

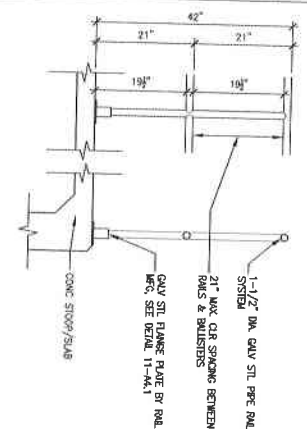
Major Use Permit Application
Lake County

Outdoor Lighting Plan

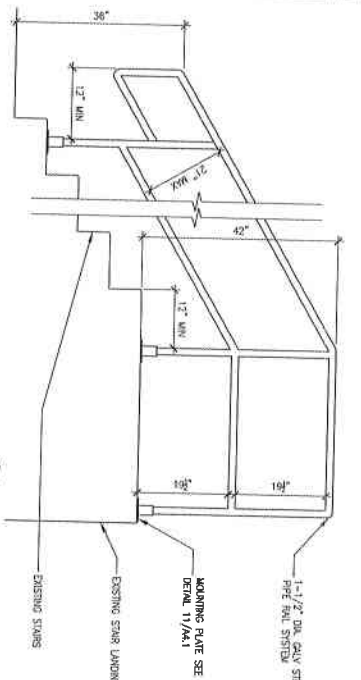
Each carrier will install up to two (2) outdoor lights which only light in a downward direction for the sole purpose of lighting the ground area near equipment in order to facilitate access and work during night hours if needed. The lights are on an automatic timer switch. Attached hereto is an illustrative sample of the light anticipated to be installed.



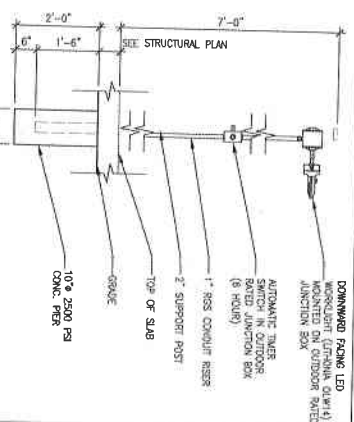
11 HANDRAIL/GUARD BASE PLATE
SCALE: 1-1/2" = 1'-0"



8 HANDRAIL/GUARD DETAIL
SCALE: 1" = 1'-0"



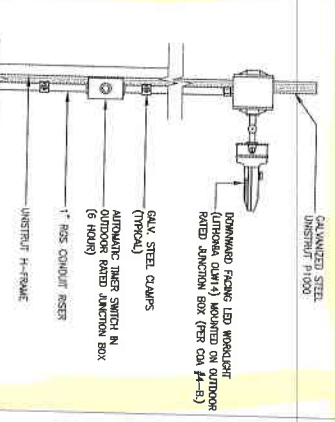
3 HANDRAIL/GUARD LAYOUT
SCALE: 1" = 1'-0"



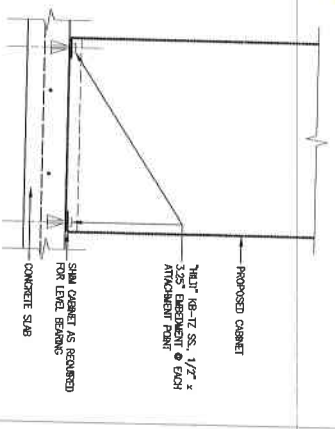
10 WORKLIGHT DETAIL
SCALE: NONE



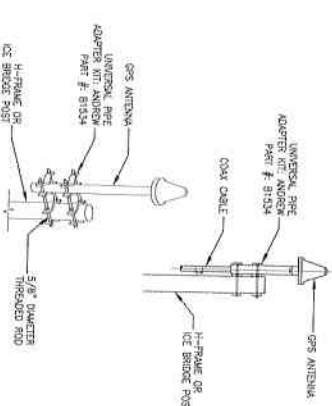
7 SITE ID & CONTACT SIGNAGE
SCALE: NONE



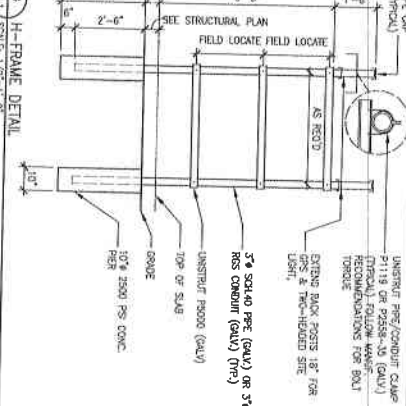
9 WORKLIGHT DETAIL
SCALE: 1-1/2" = 1'-0"



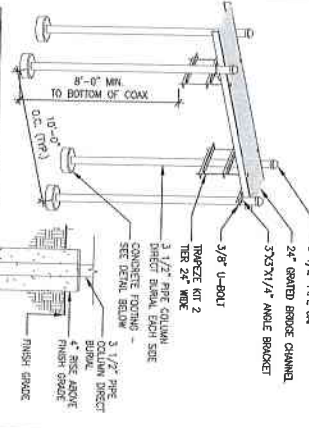
6 CABINET ANCHORAGE DETAIL
SCALE: 1-1/2" = 1'-0"



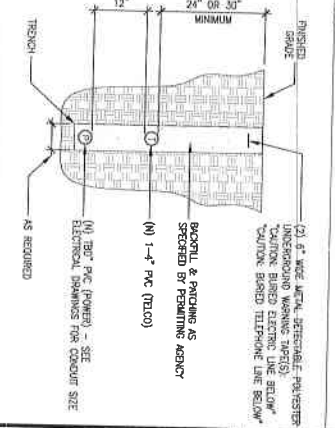
5 GPS ANTENNA MOUNTING DETAIL
SCALE: 1-1/2" = 1'-0"



4 H-FRAME DETAIL
SCALE: 1/2" = 1'-0"



2 ICE BRIDGE DETAIL
SCALE: NONE



1 JOINT POWER/TELCO TRENCH DETAIL
SCALE: NONE

Manuel S. Tsilias, Architect
1335 Star Point Drive, Jacksonville, CA 90501
310-333-3111

verizon
BLOSSOM CANYON
119 U.S. HIGHWAY 3955
GARDNERVILLE, NV 89410

CONSTRUCTION DETAILS

A4.1

DATE: 10.15.18
SCALE: AS SHOWN
DIALECT: MTD