

# PHASE I CULTURAL RESOURCE SURVEY FOR THE 32<sup>nd</sup> AND BROADWAY PROJECT

SAN DIEGO, CALIFORNIA

Project No. 637438

**Submitted to:**

City of San Diego  
Development Services Department  
1222 First Avenue, MS 501  
San Diego, California 92101

**Prepared for:**

32<sup>nd</sup> & Broadway, LLC  
3184 Airport Avenue  
Costa Mesa, California 92626

**Prepared by:**

Brian F. Smith and Associates, Inc.  
14010 Poway Road, Suite A  
Poway, California 92064



*November 5, 2018*

## **Archaeological Database Information**

***Authors:*** Andrew J. Garrison and Brian F. Smith

***Consulting Firm:*** Brian F. Smith and Associates, Inc.  
14010 Poway Road, Suite A  
Poway, California 92064  
(858) 484-0915

***Report Date:*** November 5, 2018

***Report Title:*** Phase I Cultural Resource Survey for the 32<sup>nd</sup> and Broadway Project, San Diego, California (Project No. 637438)

***Prepared for:*** 32<sup>nd</sup> & Broadway, LLC  
3184 Airport Avenue  
Costa Mesa, California 92626

***Submitted to:*** City of San Diego  
Development Services Department  
1222 First Avenue, MS 501  
San Diego, California 92101

***Prepared by:*** Brian F. Smith and Associates, Inc.  
14010 Poway Road, Suite A  
Poway, California 92064

***USGS Quadrangles:*** *Point Loma and National City, California (7.5 minute)*

***Study Area:*** Approximately 1.2 acre

***Key Words:*** Phase I survey; negative; City of San Diego; monitoring not recommended.

## I. PROJECT DESCRIPTION AND LOCATION

Brian F. Smith and Associates, Inc. (BFSA) conducted an archaeological survey of a vacant lot located at Assessor's Parcel Numbers (APNs) 539-563-06, -07, and -10 in the Greater Golden Hill Community Planning Area of the city of San Diego, California. This study was conducted as part of the environmental review process for a pending development application and has been prepared to conform to Section 21083.2 of the California Public Resources Code, the California Environmental Quality Act (CEQA), the City of San Diego's Historical Resources Guidelines, and the Golden Hill Community Plan. The subject property is southeast of the intersection of 32<sup>nd</sup> Street and C Street, near the proposed terminus of 32<sup>nd</sup> Street. The project is located within the unsectioned former Pueblo Lands of the San Diego Land Grant (Township 16 South, Range 2 West, projected) on the *Point Loma* and *National City* USGS 7.5-minute quadrangles. The archaeological survey was undertaken in order to determine if cultural resources exist within the property and, if so, to assess the possible effects of the development to those resources. Maps of the property location and development plan have been included in Attachment B (Figures 1 through 4). BFSA conducted the archaeological survey on October 8, 2018, accompanied by a Native American monitor. No cultural resources were observed during the survey.

## II. SETTING

The approximately 1.2-acre project is characterized as a vacant lot near the terminus of 32<sup>nd</sup> Street within the Golden Hill Community Planning Area. The project consists mainly of a



**Plate 1: Overview of the project, facing south.**

south-facing slope just north of State Route (SR) 94 (Plate 1). A seasonal drainage bisects the western third of the property, converging with another drainage located south of the property. A small amount of buckwheat and scrub oak was noted within the property overlooking the drainages; however, most of the property is covered in non-native vegetation consisting of Russian thistle, ice plant, pepper trees, and other weeds and grasses.

The project is located in the hills southeast of Balboa Park and southwest of Juniper Canyon. The area consists of a series of steep hills and mesas that are interrupted by small canyons and drainages located in the Coastal Plains Physiographic Province.

The major hydraulic feature near the property is the San Diego River. The San Diego River originates in the Cuyamaca Mountains and flows west/southwest through Mission Valley into Mission Bay, where the convergence of fresh and salt water forms an estuary. Geologically, the Area of Potential Effect (APE) is situated in an area with mapped exposures of the Pliocene San Diego Formation (TsD), with soils classified as Olivenhain cobbly loam, 30 to 50 percent slopes (OhF) (Soilweb 2018).

The biological setting of the project is dominated by non-native vegetation as a result of the surrounding development. Prehistorically, the area would have been comprised mostly of scrub and chaparral communities. These communities are dependent upon the amount of precipitation that the area receives. The amount of seasonal precipitation is related to the major landforms that exist throughout San Diego County. These environments tend to support a wide variety of wildlife, particularly birds and small mammals (Beauchamp 1986).

### **Cultural Setting**

Archaeological investigations in San Diego County have documented a diverse and rich record of human occupation spanning the past 10,000 years. The first generally accepted culture chronology for San Diego County was developed by geographer Malcolm Rogers (1939, 1945), who initiated the recordation of sites in the area during the 1920s and 1930s, using his field notes to construct the first cultural sequences based upon artifact assemblages and stratigraphy (Rogers 1966). Subsequent scholars expanded the information gathered by Rogers and offered more academic interpretations of the prehistoric record. Moriarty (1966, 1967, 1969), Warren (1964, 1966), and True (1958, 1966) all produced seminal works that critically defined the various prehistoric cultural phenomena present in this region (Moratto 1984). Additional studies have sought to refine these earlier works to a greater extent (Cardenas 1986; Moratto 1984; Moriarty 1966, 1967; True 1970, 1980, 1986; True and Beemer 1982; True and Pankey 1985; Waugh 1986). In sharp contrast, the current trend in San Diego prehistory has also resulted in a revisionist group that rejects the established cultural historical sequence for San Diego. This revisionist group (Warren et al. 1998) has replaced the concepts of La Jolla, San Dieguito, and all of their other manifestations with an extensive, all-encompassing, chronologically undifferentiated cultural unit that ranges from the initial occupation of southern California to around A.D. 1000 (Bull 1983, 1987; Ezell 1983, 1987; Gallegos 1987; Kyle et al. 1990; Stropes 2007). For the present study, the prehistory of the region is divided into four major periods: Early Man, Paleo Indian, Early Archaic, and Late Prehistoric.

### **Early Man Period (Prior to 8500 B.C.)**

At the present time, there has been no concrete archaeological evidence to support the occupation of San Diego County prior to 10,500 years ago. Some archaeologists, such as Carter (1957, 1980) and Minshall (1976), have been proponents of Native American occupation of the region as early as 100,000 years ago. However, their evidence for such claims is sparse and they

have lost much support over the years as more precise dating techniques have become available for skeletal remains thought to represent early man in San Diego. In addition, many of the “artifacts” initially identified as products of early man in the region have since been rejected as natural products of geologic activity. Some of the local proposed Early Man Period sites include Texas Street, Mission Valley (San Diego River Valley), Del Mar, La Jolla, Buchanan Canyon, and Brown (Bada et al. 1974; Carter 1957, 1980; Minshall 1976, 1989; Moriarty and Minshall 1972; Reeves 1985; Reeves et al. 1986).

*Paleo Indian Period (8500 to 6000 B.C.)*

For the region, it is generally accepted that the earliest identifiable culture in the archaeological record is represented by the material remains of the Paleo Indian Period San Dieguito Complex. The San Dieguito Complex was thought to represent the remains of a group of people who occupied sites in this region between 10,500 and 8,000 years before the present (YBP), and who were related to or contemporaneous with groups in the Great Basin. As of yet, no absolute dates have been forthcoming to support the great age attributed to this cultural phenomenon. The artifacts recovered from San Dieguito Complex sites duplicate the typology attributed to the Western Pluvial Lakes Tradition (Moratto 1984; Davis et al. 1969). These artifacts generally include scrapers, choppers, large bifaces, and large projectile points, with few milling tools. Tools recovered from San Dieguito Complex sites, along with the general pattern of their site locations, led early researchers to believe that the people of the San Dieguito Complex were a wandering hunter/gatherer society (Moriarty 1969; Rogers 1966).

The San Dieguito Complex is the least understood of the cultures that have inhabited the San Diego County region. This is due to an overall lack of stratigraphic information and/or datable materials recovered from sites identified as San Dieguito Complex. Currently, controversy exists among researchers regarding the relationship of the San Dieguito Complex and the subsequent cultural manifestation in the area, the La Jolla Complex. Although, firm evidence has not been recovered to indicate whether the San Dieguito Complex “evolved” into the La Jolla Complex, the people of the La Jolla Complex moved into the area and assimilated with the people of the San Dieguito Complex, or the people of the San Dieguito Complex retreated from the area due to environmental or cultural pressures.

*Early Archaic Period (6000 B.C. to A.D. 0)*

Based upon evidence suggesting climatic shifts and archaeologically observable changes in subsistence strategies, a new cultural pattern is believed to have emerged in the San Diego region around 6000 B.C. Archaeologists believe that this Archaic Period pattern evolved from or replaced the San Dieguito Complex culture, resulting in a pattern referred to as the Encinitas Tradition. In San Diego, the Encinitas Tradition is thought to be represented by the coastal La Jolla Complex and its inland manifestation, the Pauma Complex. The La Jolla Complex is best recognized for its pattern of shell middens and grinding tools closely associated with marine resources and flexed

burials (Shumway et al. 1961; Smith and Moriarty 1985). Increasing numbers of inland sites have been identified as dating to the Archaic Period, focusing upon terrestrial subsistence (Cardenas 1986; Smith 1996; Raven-Jennings and Smith 1999a, 1999b).

The tool typology of the La Jolla Complex displays a wide range of sophistication in lithic manufacturing techniques used to create the tools found at their sites. Scrapers, the dominant flaked tool type, were created by either splitting cobbles or by finely flaking quarried material. Evidence suggests that after about 8,200 YBP, milling tools began to appear in La Jolla Complex sites. Inland sites of the Encinitas Tradition (Pauma Complex) exhibit a reduced quantity of marine-related food refuse and contain large quantities of milling tools and food bone. The lithic tool assemblage shifts slightly to encompass the procurement and processing of terrestrial resources, suggesting seasonal migration from the coast to the inland valleys (Smith 1996). At the present time, the transition from the Archaic Period to the Late Prehistoric Period is not well understood. Many questions remain concerning cultural transformation between periods, possibilities of ethnic replacement, and/or a possible hiatus from the western portion of the county.

#### Late Prehistoric Period (A.D. 0 to 1769)

The transition into the Late Prehistoric Period in the project area is primarily represented by a marked change in archaeological patterning known as the Yuman Tradition. This tradition is primarily represented by the Cuyamaca Complex, which is believed to be derived from the mountains of southern San Diego County. The people of the Cuyamaca Complex are considered ancestral to the ethnohistoric Kumeyaay (Diegueño). Although several archaeologists consider the local Native American tribes to be latecomers, the traditional stories and histories passed down through oral tradition by the local Native American groups speak both presently and ethnographically to tribal presence in the region since the time of creation.

The Kumeyaay Native Americans were a seasonal hunting and gathering people with cultural elements that were very distinct from the people of the La Jolla Complex. Noted variations in material culture included cremation, the use of the bow and arrow, and adaptation to the use of the acorn as a main food staple (Moratto 1984). Along the coast, the Kumeyaay made use of marine resources by fishing and collecting shellfish for food. Seasonally available game and plant food resources (including acorns) were sources of nourishment for the Kumeyaay. The most important food resource for these people was the acorn. The acorn represented a storable surplus, which in turn allowed for seasonal sedentism and its attendant expansion of social phenomena.

Firm evidence has not been recovered to indicate whether the people of the La Jolla Complex were present when the Kumeyaay Native Americans migrated into the coastal zone. However, stratigraphic information recovered from Site SDI-4609 in Sorrento Valley suggests a possible hiatus of  $650 \pm 100$  years between the occupation of the coastal area by the La Jolla Complex ( $1,730 \pm 75$  YBP is the youngest date for the La Jolla Complex inhabitants at SDI-4609) and Late Prehistoric cultures (Smith and Moriarty 1983). More recently, a reevaluation of two prone burials at the Spindrift Site excavated by Moriarty (1965) and radiocarbon dates of a pre-

ceramic phase of Yuman occupation near Santee suggest a commingling of the latest La Jolla Complex inhabitants and the earliest Yuman inhabitants about 2,000 years ago (Kyle and Gallegos 1993).

## **History**

### **Exploration Period (1530 to 1769)**

The historic period around San Diego Bay began with the landing of Juan Rodriguez Cabrillo and his men in 1542 (Chapman 1925). Sixty years after the Cabrillo expeditions (1602 to 1603), an expedition under Sebastian Vizcaíno made an extensive and thorough exploration of the Pacific coast. Although his voyage did not extend beyond the northern limits of the Cabrillo track, Vizcaíno had the most lasting effect on the nomenclature of the coast. Many of the names Vizcaíno gave to various locations throughout the region have survived to the present time, whereas nearly all of Cabrillo's have faded from use. For example, Cabrillo gave the name "San Miguel" to the first port at which he stopped in what is now the United States; 60 years later, Vizcaíno changed the port name to "San Diego" (Rolle 1969).

### **Spanish Colonial Period (1769 to 1821)**

The Spanish occupation of the claimed territory of Alta California took place during the reign of King Carlos III of Spain (Engelhardt 1920). Jose de Gálvez, a powerful representative of the king in Mexico, conceived the plan to colonize Alta California and thereby secure the area for the Spanish Crown (Rolle 1969). The effort involved both a military and religious contingent, where the overall intent of establishing forts and missions was to gain control of the land and the native inhabitants through conversion. Actual colonization of the San Diego area began on July 16, 1769 when the first Spanish exploring party, commanded by Gaspar de Portolá (with Father Junípero Serra in charge of religious conversion of the native populations), arrived by the overland route to San Diego to secure California for the Spanish Crown (Palou 1926). The natural attraction of the harbor at San Diego and the establishment of a military presence in the area solidified the importance of San Diego to the Spanish colonization of the region and the growth of the civilian population. Missions were constructed from San Diego to the area as far north as San Francisco. The mission locations were based upon a number of important territorial, military, and religious considerations. Grants of land were made to persons who applied, but many tracts reverted back to the government due to lack of use. As an extension of territorial control by the Spanish Empire, each mission was placed so as to command as much territory and as large a population as possible. While primary access to California during the Spanish Period was by sea, the route of El Camino Real served as the land route for transportation, commercial, and military activities within the colony. This route was considered to be the most direct path between the missions (Rolle 1969; Caughey 1970). As increasing numbers of Spanish and Mexican peoples settled in the area, as well as the later Americans during the Gold Rush, the Native American populations diminished as they were displaced or decimated by disease (Carrico and Taylor 1983).

Mexican Period (1821 to 1846)

On September 16, 1810, the priest Father Miguel Hidalgo y Costilla started a revolt against Spanish rule. He and his untrained Native American followers fought against the Spanish, but Father Hidalgo's revolt was unsuccessful and he was executed. After this setback, Father José Morales led the revolutionaries, but he too failed and was executed. These two men are still symbols of Mexican liberty and patriotism. After the Mexican-born Spanish and the Catholic Church joined the revolution, Spain was finally defeated in 1821. Mexican Independence Day is celebrated on September 16 of each year, signifying the anniversary of the start of Father Hidalgo's revolt. The revolution had repercussions in the northern territories, and by 1834, all of the mission lands had been removed from the control of the Franciscan Order under the Acts of Secularization. Without proper maintenance, the missions quickly began to disintegrate, and after 1836, missionaries ceased to make regular visits inland to minister the needs of the Native Americans (Engelhardt 1920). Large tracts of land continued to be granted to those who applied or who had gained favor with the Mexican government. Grants of land were also made to settle government debts and the Mexican government was called upon to reaffirm some older Spanish land grants shortly before the Mexican-American War of 1846 (Moyer 1969).

Anglo-American Period (1846 to Present)

California was invaded by United States troops during the Mexican-American War from 1846 to 1848. The acquisition of strategic Pacific ports and California land was one of the principal objectives of the war (Price 1967). At the time, the inhabitants of California were practically defenseless, and they quickly surrendered to the United States Navy in July of 1847 (Bancroft 1886).

The cattle ranchers of the "counties" of southern California prospered during the cattle boom of the early 1850s. They were able to "reap windfall profit ... pay taxes and lawyer's bills ... and generally live according to custom" (Pitt 1966). However, cattle ranching soon declined, contributing to the expansion of agriculture. With the passage of the "No Fence Act," San Diego's economy shifted from raising cattle to farming (Robinson 1948). The act allowed for the expansion of unfenced farms, which was crucial in an area where fencing material was practically unavailable. Five years after its passage, most of the arable lands in San Diego County had been patented as either ranchos or homesteads, and growing grain crops replaced raising cattle in many of the county's inland valleys (Blick 1976; Elliott 1883 [1965]).

By 1870, farmers had learned to dry farm and were coping with some of the peculiarities of San Diego County's climate (*San Diego Union* 1868; Van Dyke 1886). Between 1869 and 1871, the amount of cultivated acreage in the county rose from less than 5,000, to more than 20,000 acres (*San Diego Union* 1872). Of course, droughts continued to hinder the development of agriculture (Crouch 1915; *San Diego Union* 1870; Shipek 1977). Large-scale farming in San Diego County was limited by a lack of water and the small size of arable valleys. The small urban



population and poor roads also restricted commercial crop growing. Meanwhile, cattle continued to be grazed in parts of inland San Diego County. In the Otay Mesa area, for example, the “No Fence Act” had little effect on cattle farmers because ranches were spaced far apart and natural ridges kept the cattle out of nearby growing crops (Gordinier 1966).

During the first two decades of the twentieth century, the population of San Diego County continued to grow. The population of the inland county declined during the 1890s, but between 1900 and 1910, it rose by about 70 percent. The pioneering efforts were over, the railroads had broken the relative isolation of southern California, and life in San Diego County had become similar to other communities throughout the west. After World War I, the history of San Diego County was primarily determined by the growth of San Diego Bay. In 1919, the United States Navy decided to make the bay the home base for the Pacific Fleet (Pourade 1967), as did the aircraft industry during the 1920s (Heiges 1976). The establishment of these industries led to the growth of the county as a whole; however, most of the civilian population growth occurred in the north county coastal areas, where the population almost tripled between 1920 and 1930. During this time period, the history of inland San Diego County was subsidiary to that of the city of San Diego, which had become a Navy center and an industrial city (Heiges 1976). In inland San Diego County, agriculture became specialized and recreational areas were established in the mountain and desert areas. Just before World War II, urbanization began to spread to the inland parts of the county.

### History of the Golden Hill Area

In the late nineteenth century, the San Diego region was experiencing a land boom with speculators and boosters purchasing and subdividing land adjacent to Horton’s Addition. Land speculation increased in the Golden Hill area in the early 1870s when the Texas and Pacific Railway Company announced plans to construct a transcontinental rail line to San Diego (City of San Diego 2016). However, the Texas and Pacific Railway was unable to fund the construction of the railroad. As a result, many speculators panicked and defaulted on their loans before much of the area had been developed. Speculators again began to buy land in the area during a period known as the “Great Boom,” which spanned the mid-1880s. It was during this time that local developers Daniel Schuyler and Erastus Bartlett pushed for the area to be named “Golden Hill” due to the manner in which the sun glinted across the hill at dusk. In 1888, the development boom in the region again came to an abrupt halt (City of San Diego 2016).

The collapse of the development industry left the Golden Hill area somewhat disconnected from the city of San Diego proper, as the necessary infrastructure had not yet been put in place. This left the area semi-rural as only a handful of settlers had established residences. However, in the 1890s, 40 acres within a portion of the Golden Hill neighborhood west of the project was developed. This new development transformed the area into a residential district of Victorian-style homes owned by prominent citizens including doctors, lawyers, businessmen, and politicians (City of San Diego 2016).

In 1906, the Bartlett Estate Company financed and constructed an electric streetcar in the rural South Park area of the Golden Hill neighborhood, just north of the current project. The development of the streetcar touched off a period of residential development in the early twentieth century, which transformed many of the remaining rural portions of the Golden Hill neighborhood. The development of the streetcar connected much of the Golden Hill neighborhood to the city center, leading to the construction of new Craftsman-style, single-family residences (City of San Diego 2016). Construction of new homes again began to decline in the 1930s due to the Great Depression.

Although the Great Depression slowed the growth of the Golden Hill area, the outbreak of World War II in Europe improved the economy, as it provided opportunities to supply Britain, France, and the Soviet Union with war materials (City of San Diego 2016). During the 1960s and 1970s, the area continued to experience steady growth as developers infilled vacant lots with multi-family residences, reflecting a change in demographics due to an influx of “blue collar” workers (City of San Diego 2016). Many of the new inhabitants to the area were renters and landlords, who were slow to make repairs or simply neglected their buildings. As a result, many of the structures fell into poor condition. However, during the late 1970s and 1980s, many efforts to revitalize neighborhoods were implemented, leading to a new period of homeownership in the area (City of San Diego 2016). Efforts to revitalize the Golden Hill area have continued transforming the area once again into a desirable place to live.

### **III. AREA OF POTENTIAL EFFECT**

This archaeological review encompasses approximately 1.2 acre (APNs 539-563-06, -07, and -10) in the Greater Golden Hill Community Planning Area of the city of San Diego. The project is southeast of the intersection of 32<sup>nd</sup> Street and C Street, near the proposed terminus of 32<sup>nd</sup> Street. The APE can be characterized as vacant land consisting of a south-facing slope just north of SR 94. The proposed construction includes the infill development of the parcels for a residential project (Attachment B: Figure 4).

### **IV. STUDY METHODS**

The archaeological assessment included a reconnaissance of the property and an institutional records search review of previous studies in the area. The archaeological reconnaissance was monitored by a Native American monitor (Wanda Growingthunder). BFSA reviewed the results of a records search completed by the South Coastal Information Center (SCIC) at San Diego State University for the project to determine the presence of any previously recorded cultural resources (Confidential Appendix).

The SCIC records search identified 32 cultural resources within a half-mile of the project, none of which are recorded within the APE. All of the previously recorded resources are historic

and consist of nine trash deposits, 14 sidewalk stamps, abandoned trolley tracks, seven single-family residences, and one mid-century community center building. The records search also identified 38 previous investigations within a half-mile of the project, two of which include the current study area (Ogden Environmental and Energy Services 1993; May 2002). Neither of the previous studies identified any cultural resources within the APE. In addition to the recorded resources, six historic addresses have been recorded within a half-mile of the APE.

A Sacred Lands File (SLF) search was requested by BFSA from the Native American Heritage Commission (NAHC). The NAHC SLF was positive for Native American cultural resources within the general area. A list of Native American contacts was provided by the NAHC. In accordance with the recommendations of the NAHC, BFSA contacted all Native American consultants listed, to inform them about the nature of the project and request any additional information that they may be able to provide and received two responses. The Kumeyaay Cultural Repatriation Committee and Iipay Nation of Santa Ysabel indicated the presence of resources within the general project vicinity and requested that a Kumeyaay monitor be present during ground-disturbing activities. The Viejas Band of Kumeyaay Indians also expressed interest in the project and requested that a Native American monitor be present during the development of the project (Confidential Appendix).

## **V. RESULTS OF THE STUDY**

### **Background Research**

The Greater Golden Hill Community Planning Area is considered low to moderately sensitive for cultural resources based upon the number of recorded resources within the vicinity. As identified within the SCIC records search, all previously recorded resources within a half-mile of the subject property are historic, with most being associated with the built environment. However, development in the area has likely impacted or masked resources prior to protective legislation. The city of San Diego and surrounding areas have yielded substantial evidence of human presence since the terminal Pleistocene/Early Holocene. The coastal mesas and wetland areas were important hunting and gathering areas for local human inhabitants in prehistoric times. The San Diego area experienced an arid climate for at least the last 9,000 years, and sources of fresh water attracted plants and animals, as well as humans who depended upon plants, animals, and fresh water for survival. The presence of fresh water in the San Diego River and its tributaries, as well as plant foods, a variety of edible animals, and a supply of tool stone material in the form of nodules were important resources in the surrounding area. The proximity to nearby marine resources in San Diego and Mission bays is an additional reason the region was attractive to prehistoric human populations on a seasonal and/or year-round basis.

The records search and literature review suggest that historic resources are the most likely to be encountered within the APE. The potential for prehistoric sites in the subject property is low given the slope of the parcel, the lack of any other prehistoric sites within a half-mile, and the

absence of bedrock or other landforms that are typically associated with prehistoric use areas. The lack of prehistoric resources within the project vicinity could be due to the historic development of the region before environmental protections necessitated cultural resource studies. Nevertheless, the nearest recorded resource to the property is a single-family residence, while the only archaeological site types identified in the records search are historic trash deposits identified during city improvement projects. Similar buried deposits are unlikely on the current APE, as the property has never been developed. However, since the APE has remained vacant while other surrounding properties have been developed, there is a possibility for historic trash scatters as episodes of historic dumping could be present on the property.

### **Field Reconnaissance**

On October 8, 2018, BFSA Project Archaeologist Andrew J. Garrison, M.A., RPA conducted the field survey under the direction of BFSA Principal Investigator Brian F. Smith, M.A. Native American monitor Wanda Growingthunder actively participated in the survey. The survey was conducted by walking transects in 10-meter intervals across the property. Survey conditions were generally good and ground visibility was classified as generally good (75 percent). The property is characterized as vacant land consisting of a south-facing slope just north of SR 94. A seasonal drainage bisects the western third of the property, converging with another drainage located south of the property. A small amount of buckwheat and scrub oak was noted within the property overlooking the drainages; however, most of the property is covered in non-native vegetation consisting of Russian thistle, ice plant, pepper trees, and other weeds and grasses.

The property has been disturbed by the development of adjacent parcels. At the time of the survey, the property directly to the east had recently been developed and it appears the current APE was utilized for access to and from the adjacent parcel during construction. Dirt roads are located along the perimeter and traversing through the property. Modern building material and trash were noted throughout the property. In addition, many areas throughout the property appeared to be disturbed as a result of vegetation clearing for weed abatement. During the survey, particular attention was paid to areas with exposed ground surfaces, such as rodent burrows, areas around the base of vegetation, and the excavation areas surrounding where trees had been removed. No cultural materials were identified on any of the exposed ground surfaces within the property.

### **Evaluation**

Based upon the results of the survey, no cultural resources have been identified on the subject property. No further archaeological study is necessary to assess the potential for cultural resources.

**VI. RECOMMENDATIONS**

The City of San Diego typically requires two tasks for an archaeological study of this nature: assessment of the potential for cultural resources on the property and a visual inspection for the presence of cultural resources. As noted previously, no evidence of any prehistoric cultural resources was identified within the property during the records search and survey. The slopes that characterize the property likely represent the primary reason that no resources are present. In addition, the property has been disturbed by the development of adjacent properties. Further, as the development is an infill project on parcels surrounded by structures, it is likely that if surrounding sites did exist at one time they would have been destroyed. Therefore, given the results of the SCIC records search, the fact that no archaeological sites, features, or artifacts were identified during the field reconnaissance, and the nature of the infill development, no potential impacts to cultural resources are associated with the proposed development of the project, and monitoring of grading will not be recommended.

**VII. SOURCES CONSULTED**

**DATE**

National Register of Historic Places	Month and Year: October 2018
California Register of Historical Resources	Month and Year: October 2018
City of San Diego Historical Resources Register	Month and Year: October 2018
Archaeological/Historical Site Records: South Coastal Information Center	Month and Year: October 2018
Other Sources Consulted: NAHC SLF Search (Confidential Appendix) References (Attachment A)	

## **VIII. CERTIFICATION**

I hereby certify that the statements furnished above and in the attached exhibits present the data and information required for this archaeological report, and that the facts, statements, and information presented are true and correct to the best of my knowledge and belief, and have been compiled in accordance with the California Environmental Quality Act criteria as defined in Section 15064.5 and City of San Diego Historical Resources Guidelines.



---

Brian F. Smith  
Principal Investigator

November 5, 2018

Date

**IX. ATTACHMENT A**

**References**

**Resumes**

## **REFERENCES**

- Bada, Jeffrey L., Roy A. Schroeder, and George F. Carter  
1974 New Evidence for the Antiquity of Man in America Deduced from Aspartic Acid Racemization. *Science* 184:791-793.
- Bancroft, Hubert Howe  
1886 *History of California* (Vol. II). The History Company, San Francisco.
- Beauchamp, R. Mitchel  
1986 *A Flora of San Diego County, California*. Sweetwater River Press, National City, California.
- Blick, J.D.  
1976 *Agriculture in San Diego County*. In *San Diego – An Introduction to the Area*. Edited by Philip Pryde. Kendall/Hunt Publishing Company, Dubuque, Iowa.
- Brian F. Smith and Associates, Inc.  
Various dates. Research library holdings including Sanborn maps, city directories, aerial photographs, published regional histories, and geologic and paleontological references.
- Bull, C.  
1983 Shaking the Foundations: The Evidence for San Diego Prehistory. *Cultural Resource Management Casual Papers* 1(3):15-64. Department of Anthropology, San Diego State University.  
  
1987 A New Proposal: Some Suggestions for San Diego Prehistory. In *San Dieguito-La Jolla: Chronology and Controversy*, edited by Dennis Gallegos, pp. 35-42. San Diego County Archaeological Society Research Paper No. 1.
- Cardenas, D. Sean  
1986 Avocado Highlands: An Inland Late La Jolla and Preceramic Yuman Site from Southern San Diego County. *Cultural Resource Management Casual Paper* 2(2). Department of Anthropology, San Diego State University.
- Carrico, Richard L. and Clifford V.F. Taylor  
1983 Excavation of a Portion of Ystagua: A Coastal Valley Ipai Settlement. Environmental Impact Report on file at the City of San Diego, Environmental Quality Division.
- Carter, George F.  
1957 *Pleistocene Man at San Diego*. Johns Hopkins Press, Baltimore.  
  
1980 *Earlier Than You Think: A Personal View of Man in America*. Texas A&M University Press, College Station.



Caughey, John W.

1970 *California: A Remarkable State's Life History* (Third Edition). Prentice-Hall, Englewood Cliffs, New Jersey.

Chapman, Charles E.

1925 *A History of California: The Spanish Period*. The Macmillan Company, New York.

City of San Diego

2016 Golden Hill Community Plan. On file at the City of San Diego, San Diego, California.

Davis, E.L., C.W. Brott, and D.L. Weide

1969 The Western Lithic Co-Tradition. *San Diego Museum Papers* (No. 6). San Diego Museum of Man, San Diego.

Elliott, Wallace W.

1883 *History of San Bernardino and San Diego Counties* (1965 Edition). Riverside Museum Press, Riverside, California.

Engelhardt, Zephyrn

1920 *San Diego Mission*. James M. Barry Company, San Francisco.

Ezell, Paul H.

1983 A New Look at the San Dieguito Culture. *Cultural Resource Management Casual Papers* 1(3):103-109. Department of Anthropology, San Diego State University, San Diego.

1987 The Harris Site – An Atypical San Dieguito Site, or am I Beating a Dead Horse? In *San Dieguito-La Jolla: Chronology and Controversy*, edited by Dennis Gallegos, pp. 15-22. San Diego County Archaeological Society Research Paper No. 1.

Gallegos, Dennis R.

1987 A Review and Synthesis of Environmental and Cultural Material for the Batiquitos Lagoon Region. In *San Dieguito-La Jolla: Chronology and Controversy*, Edited by D. Gallegos. San Diego County Archaeological Society Research Paper 1:23-34.

Gordinier, Jerry G.

1966 *Problems of Settlement in the San Diego Foothills*. Unpublished Master's thesis, San Diego State College, San Diego, California.

Heiges, Harvey

1976 The Economic Base of San Diego County. In *San Diego – An Introduction to the Region*. Edited by Philip Pryde. Kendall/Hunt Publishing Company, Dubuque, Iowa.

Kyle, Carolyn E. and Dennis R. Gallegos

1993 Data Recovery Program for a Portion of Prehistoric Site CA-SDI-10148, East Mission

Gorge Pump Station and Force Main, San Diego, California. Unpublished report on file at the South Coastal Information Center, San Diego State University, San Diego, California.

Kyle, Carolyn, Adella Schroth, and Dennis R. Gallegos

- 1990 Early Period Occupation at the Kuebler Ranch Site SDI-8,654 Otay Mesa, San Diego County, California. Prepared for County of San Diego, Department of Public Works by ERCE Environmental and Energy Services Co., San Diego.

May, Ronald V.

- 2002 Historical Nomination of the South Park Commercial Transit Historic District. Unpublished report on file at the South Coastal Information Center at San Diego State University, San Diego, California.

Minshall, Herbert L.

- 1976 *The Broken Stones*. Copley Books, San Diego.

- 1989 *Buchanan Canyon: Ancient Human Presence in the Americas*. Slawson Communications, San Marcos, California.

Moratto, Michael J.

- 1984 *California Archaeology*. Academic Press, New York.

Moriarty, James R., III

- 1965 Cosmogeny, Rituals, and Medical Practice Among the Diegueño Indians of Southern California. *Anthropological Journal of Canada* 3(3):2-14.

- 1966 Culture Phase Divisions Suggested by Topological Change Coordinated with Stratigraphically Controlled Radiocarbon Dating in San Diego. *Anthropological Journal of Canada* 4(4):20-30.

- 1967 Transitional Pre-Desert Phase in San Diego, California. *Science* 155(3762):553-336. Scripps Institution – UCSD Contribution No. 2278.

- 1969 San Dieguito Complex: Suggested Environmental and Cultural Relationships. *Anthropological Journal of Canada* 7(3):2-18.

Moriarty, James Robert, III and Herbert L. Minshall

- 1972 A New Pre-Desert Site Discovered near Texas Street. *Anthropological Journal of Canada* 10(3):10-13.

Moyer, Cecil C.

- 1969 *Historic Ranchos of San Diego*. Edited by Richard F. Pourade. Union-Tribune Publishing Company, San Diego.

Ogden Environmental and Energy Services

- 1993 Historic Properties Inventory for the Proposed Montclair Canyon Sewer Project. Unpublished report on file at the South Coastal Information Center at San Diego State University, San Diego, California.

Palou, Fray Francisco

- 1926 *Historical Memoirs of New California*. Edited by Herbert Eugene Bolton (4 Volumes). University of California Press, Berkeley.

Pitt, Leonard

- 1966 *The Decline of the Californios*. University of California Press, Los Angeles.

Pourade, Richard F.

- 1967 *The Rising Tide: Southern California in the Twenties and Thirties*. Union-Tribune Publishing Company, San Diego.

Price, Glenn W.

- 1967 *Origins of the War with Mexico*. University of Texas Press, Austin.

Raven-Jennings, Shelly and Brian F. Smith

- 1999a Final Report for Site SDI-8330/W-240 'Scraper Hill,' Escondido, California. Unpublished report on file at the South Coastal Information Center at San Diego State University, San Diego, California.
- 1999b Report of Excavations at CA-SDI-4608: Subsistence and Technology Transitions during the Mid-to-Late Holocene in San Diego County (Scripps Poway Parkway). Unpublished report on file at the South Coastal Information Center at San Diego State University, San Diego, California.

Reeves, Brian O.K.

- 1985 Early Man in the Americas: Who, When, and Why. In *Woman, Poet, Scientist: Essays in New World Anthropology Honoring Dr. Emma Louise Davis*, edited by Thomas C. Blackburn, pp. 79-104. Ballena Press Anthropological Papers No. 29. Los Altos, California.

Reeves, Brian, John M.D. Pohl, and Jason W. Smith.

- 1986 The Mission Ridge Site and the Texas Street Question. In *New Evidence for the Pleistocene Peopling of the Americas*, edited by Alan Lyle Bryan, pp. 65-80. Center for the Study of Early Man, University of Maine, Orono.

Robinson, W.W.

- 1948 *Land in California*. University of California Press, Berkeley.

Rogers, Malcolm

- 1939 Early Lithic Industries of the Lower Basin of the Colorado River and Adjacent Desert

- Areas. *San Diego Museum Papers* (No. 3 – 1989 printing). San Diego Museum of Man.
- 1945 An Outline of Yuman Prehistory. Albuquerque: *Southwestern Journal of Anthropology* 1(2):167-198.
- 1966 *Ancient Hunters of the Far West*. Edited with contributions by H.M. Worthington, E.L. Davis, and Clark W. Brott. Union Tribune Publishing Company, San Diego.
- Rolle, Andrew F.
- 1969 *California: A History* (Second Edition). Thomas Y. Crowell Company, New York.
- San Diego Union*
- 1868 San Diego history. 6 February. San Diego, California.
- 1870 San Diego history. 10 November. San Diego, California.
- 1872 San Diego history. 2 January. San Diego, California.
- Shipek, Florence
- 1977 *A Strategy for Change: The Luiseño of Southern California*. Unpublished Doctoral dissertation on file at the University of Hawaii.
- Shumway, George, Carl L. Hubbs, and James R. Moriarty
- 1961 Scripps Estate Site, San Diego, California: A La Jolla Site Dated 5,460-7,370 Years Before the Present. *Annals of the New York Academy of Sciences* 93(3).
- Smith, Brian F.
- 1996 The Results of a Cultural Resource Study at the 4S Ranch. Unpublished report on file at the South Coastal Information Center at San Diego State University, San Diego, California.
- Smith, Brian F. and James R. Moriarty
- 1983 An Archaeological Evaluation of a Drainage Channel Project at the South Sorrento Business Park. Environmental Impact Report on file at the City of San Diego.
- 1985 The Archaeological Excavations at Site W-20, Sierra Del Mar. Unpublished report on file at the South Coastal Information Center at San Diego State University, San Diego, California.
- Soilweb
- 2018 An online soil survey browser. Electronic document, <https://casoilresource.lawr.ucdavis.edu/gmap/> California Soil Resource Lab, accessed October 19, 2018.

Stropes, Tracy A.

- 2007 *Nodule Industries of North Coastal San Diego: Understanding Change and Stasis in 10,000 Years of Lithic Technology*. Submitted to San Diego State University. Thesis/Dissertation on file at the South Coastal Information Center at San Diego State University, San Diego, California.

True, Delbert L.

- 1958 An Early Complex in San Diego County, California. *American Antiquity* 23(3).
- 1966 *Archaeological Differentiation of the Shoshonean and Yuman Speaking Groups in Southern California*. Unpublished doctoral dissertation, University of California at Los Angeles.
- 1970 Investigations of a Late Prehistoric Complex in Cuyamaca Rancho State Park, San Diego County, California. *Archaeological Survey Monograph*. University of California, Los Angeles.
- 1980 The Pauma Complex in Northern San Diego County: 1978. *Journal of New World Archaeology* 3(4):1-39.
- 1986 Molpa, a Late Prehistoric Site in Northern San Diego County: The San Luis Rey Complex, 1983. In *Symposium: A New Look at Some Old Sites*, edited by Gary S. Breschini and Trudy Haversat, pp. 29-36. Coyote Press, Salinas.

True, D.L. and Eleanor Beemer

- 1982 Two Milling Stone Inventories from Northern San Diego County, California. *Journal of California and Great Basin Anthropology* 4:233-261.

True, D.L. and R. Pankey

- 1985 Radiocarbon Dates for the Pauma Complex Component at the Pankey Site, Northern San Diego County, California. *Journal of California and Great Basin Anthropology* 7:240-244.

Van Dyke, Theodore

- 1886 *Southern California*. Fords, Howard and Hulbert.

Warren, Claude N.

- 1964 *Cultural Change and Continuity on the San Diego Coast*. Unpublished Doctoral dissertation on file at the University of California, Los Angeles.
- 1966 The San Dieguito Type Site: Malcolm J. Roger's 1938 Excavation on the San Dieguito River. *San Diego Museum Papers* (6).

Warren, Claude N., Gretchen Siegler, and Frank Dittmer

- 1998 Paleoindian and Early Archaic Periods. In *Prehistoric and Historic Archaeology of*

*Metropolitan San Diego: A Historical Properties Background Study (draft)*. Prepared for and on file, ASM Affiliates, Inc., San Diego, California.

Waugh, Georgie

1986 *Intensification and Land-use: Archaeological Indication of Transition and Transformation in a Late Prehistoric Complex in Southern California*. Unpublished Ph.D. dissertation, Department of Anthropology, University of California, Davis.

# Brian F. Smith, MA

## Owner, Principal Investigator

Brian F. Smith and Associates, Inc.

14010 Poway Road • Suite A •

Phone: (858) 679-8218 • Fax: (858) 679-9896 • E-Mail: bsmith@bfsa-ca.com



## Education

---

<b>Master of Arts, History, University of San Diego, California</b>	<b>1982</b>
<b>Bachelor of Arts, History, and Anthropology, University of San Diego, California</b>	<b>1975</b>

## Professional Memberships

---

Society for California Archaeology

## Experience

---

<b>Principal Investigator</b> <b>Brian F. Smith and Associates, Inc.</b>	<b>1977–Present</b> <b>Poway, California</b>
---	---

Brian F. Smith is the owner and principal historical and archaeological consultant for Brian F. Smith and Associates. Over the past 32 years, he has conducted over 2,500 cultural resource studies in California, Arizona, Nevada, Montana, and Texas. These studies include every possible aspect of archaeology from literature searches and large-scale surveys to intensive data recovery excavations. Reports prepared by Mr. Smith have been submitted to all facets of local, state, and federal review agencies, including the US Army Corps of Engineers, the Bureau of Land Management, the Bureau of Reclamation, the Department of Defense, and the Department of Homeland Security. In addition, Mr. Smith has conducted studies for utility companies (Sempra Energy) and state highway departments (CalTrans).

## Professional Accomplishments

---

These selected major professional accomplishments represent research efforts that have added significantly to the body of knowledge concerning the prehistoric life ways of cultures once present in the Southern California area and historic settlement since the late 18<sup>th</sup> century. Mr. Smith has been principal investigator on the following select projects, except where noted.

**Downtown San Diego Mitigation and Monitoring Reporting Programs:** Large numbers of downtown San Diego mitigation and monitoring projects submitted to the Centre City Development Corporation, some of which included Strata (2008), Hotel Indigo (2008), Lofts at 707 10<sup>th</sup> Avenue Project (2007), Breeza (2007), Bayside at the Embarcadero (2007), Aria (2007), Icon (2007), Vantage Pointe (2007), Aperture (2007), Sapphire Tower (2007), Lofts at 655 Sixth Avenue (2007), Metrowork (2007), The Legend (2006), The Mark (2006), Smart Corner (2006), Lofts at 677 7<sup>th</sup> Avenue (2005), Aloft on Cortez Hill (2005), Front and

Beech Apartments (2003), Bella Via Condominiums (2003), Acqua Vista Residential Tower (2003), Northblock Lofts (2003), Westin Park Place Hotel (2001), Parkloft Apartment Complex (2001), Renaissance Park (2001), and Laurel Bay Apartments (2001).

Archaeology at the Padres Ballpark: Involved the analysis of historic resources within a seven-block area of the "East Village" area of San Diego, where occupation spanned a period from the 1870s to the 1940s. Over a period of two years, BFSA recovered over 200,000 artifacts and hundreds of pounds of metal, construction debris, unidentified broken glass, and wood. Collectively, the Ballpark Project and the other downtown mitigation and monitoring projects represent the largest historical archaeological program anywhere in the country in the past decade (2000-2007).

4S Ranch Archaeological and Historical Cultural Resources Study: Data recovery program consisted of the excavation of over 2,000 square meters of archaeological deposits that produced over one million artifacts, containing primarily prehistoric materials. The archaeological program at 4S Ranch is the largest archaeological study ever undertaken in the San Diego County area and has produced data that has exceeded expectations regarding the resolution of long-standing research questions and regional prehistoric settlement patterns.

Charles H. Brown Site: Attracted international attention to the discovery of evidence of the antiquity of man in North America. Site located in Mission Valley, in the city of San Diego.

Del Mar Man Site: Study of the now famous Early Man Site in Del Mar, California, for the San Diego Science Foundation and the San Diego Museum of Man, under the direction of Dr. Spencer Rogers and Dr. James R. Moriarty.

Old Town State Park Projects: Consulting Historical Archaeologist. Projects completed in the Old Town State Park involved development of individual lots for commercial enterprises. The projects completed in Old Town include Archaeological and Historical Site Assessment for the Great Wall Cafe (1992), Archaeological Study for the Old Town Commercial Project (1991), and Cultural Resources Site Survey at the Old San Diego Inn (1988).

Site W-20, Del Mar, California: A two-year-long investigation of a major prehistoric site in the Del Mar area of the city of San Diego. This research effort documented the earliest practice of religious/ceremonial activities in San Diego County (circa 6,000 years ago), facilitated the projection of major non-material aspects of the La Jolla Complex, and revealed the pattern of civilization at this site over a continuous period of 5,000 years. The report for the investigation included over 600 pages, with nearly 500,000 words of text, illustrations, maps, and photographs documenting this major study.

City of San Diego Reclaimed Water Distribution System: A cultural resource study of nearly 400 miles of pipeline in the city and county of San Diego.

Master Environmental Assessment Project, City of Poway: Conducted for the City of Poway to produce a complete inventory of all recorded historic and prehistoric properties within the city. The information was used in conjunction with the City's General Plan Update to produce a map matrix of the city showing areas of high, moderate, and low potential for the presence of cultural resources. The effort also included the development of the City's Cultural Resource Guidelines, which were adopted as City policy.

Draft of the City of Carlsbad Historical and Archaeological Guidelines: Contracted by the City of Carlsbad to produce the draft of the City's historical and archaeological guidelines for use by the Planning Department of the City.

The Mid-Bayfront Project for the City of Chula Vista: Involved a large expanse of undeveloped agricultural land situated between the railroad and San Diego Bay in the northwestern portion of the city. The study included the analysis of some potentially historic features and numerous prehistoric sites.



Cultural Resources Survey and Test of Sites Within the Proposed Development of the Audie Murphy Ranch, Riverside County, California: Project manager/director of the investigation of 1,113.4 acres and 43 sites, both prehistoric and historic—including project coordination; direction of field crews; evaluation of sites for significance based on County of Riverside and CEQA guidelines; assessment of cupule, pictograph, and rock shelter sites, co-authoring of cultural resources project report. February-September 2002.

Cultural Resources Evaluation of Sites Within the Proposed Development of the Otay Ranch Village 13 Project, San Diego County, California: Project manager/director of the investigation of 1,947 acres and 76 sites, both prehistoric and historic—including project coordination and budgeting; direction of field crews; assessment of sites for significance based on County of San Diego and CEQA guidelines; co-authoring of cultural resources project report. May-November 2002.

Cultural Resources Survey for the Remote Video Surveillance Project, El Centro Sector, Imperial County: Project manager/director for a survey of 29 individual sites near the U.S./Mexico Border for proposed video surveillance camera locations associated with the San Diego Border barrier Project—project coordination and budgeting; direction of field crews; site identification and recordation; assessment of potential impacts to cultural resources; meeting and coordinating with U.S. Army Corps of Engineers, U.S. Border Patrol, and other government agencies involved; co-authoring of cultural resources project report. January, February, and July 2002.

Cultural Resources Survey and Test of Sites Within the Proposed Development of the Menifee West GPA, Riverside County, California: Project manager/director of the investigation of nine sites, both prehistoric and historic—including project coordination and budgeting; direction of field crews; assessment of sites for significance based on County of Riverside and CEQA guidelines; historic research; co-authoring of cultural resources project report. January-March 2002.

Mitigation of An Archaic Cultural Resource for the Eastlake III Woods Project for the City of Chula Vista, California: Project archaeologist/ director—including direction of field crews; development and completion of data recovery program including collection of material for specialized faunal and botanical analyses; assessment of sites for significance based on CEQA guidelines; management of artifact collections cataloging and curation; data synthesis; co-authoring of cultural resources project report, in prep. September 2001-March 2002.

Cultural Resources Survey and Test of Sites Within the Proposed French Valley Specific Plan/EIR, Riverside County, California: Project manager/director of the investigation of two prehistoric and three historic sites—including project coordination and budgeting; survey of project area; Native American consultation; direction of field crews; assessment of sites for significance based on CEQA guidelines; cultural resources project report in prep. July-August 2000.

Cultural Resources Survey and Test of Sites Within the Proposed Lawson Valley Project, San Diego County, California: Project manager/director of the investigation of 28 prehistoric and two historic sites—including project coordination; direction of field crews; assessment of sites for significance based on CEQA guidelines; cultural resources project report in prep. July-August 2000.

Cultural Resource Survey and Geotechnical Monitoring for the Mohyi Residence Project, La Jolla, California: Project manager/director of the investigation of a single-dwelling parcel—including project coordination; field survey; assessment of parcel for potentially buried cultural deposits; monitoring of geotechnical borings; authoring of cultural resources project report. Brian F. Smith and Associates, San Diego, California. June 2000.

Enhanced Cultural Resource Survey and Evaluation for the Prewitt/Schmucker/Cavadias Project, La Jolla, California: Project manager/director of the investigation of a single-dwelling parcel—including project coordination; direction of field crews; assessment of parcel for potentially buried cultural deposits; authoring of cultural resources project report. June 2000.

Cultural Resources Survey and Test of Sites Within the Proposed Development of the Menifee Ranch, Riverside County, California: Project manager/director of the investigation of one prehistoric and five historic sites—included project coordination and budgeting; direction of field crews; feature recordation; historic structure assessments; assessment of sites for significance based on CEQA guidelines; historic research; co-authoring of cultural resources project report. February-June 2000.

Salvage Mitigation of a Portion of the San Diego Presidio Identified During Water Pipe Construction for the City of San Diego, California: Project archaeologist/director—included direction of field crews; development and completion of data recovery program; management of artifact collections cataloging and curation; data synthesis and authoring of cultural resources project report in prep. April 2000.

Enhanced Cultural Resource Survey and Evaluation for the Tyrian 3 Project, La Jolla, California: Project manager/director of the investigation of a single-dwelling parcel—included project coordination; assessment of parcel for potentially buried cultural deposits; authoring of cultural resources project report. April 2000.

Enhanced Cultural Resource Survey and Evaluation for the Lamont 5 Project, Pacific Beach, California: Project manager/director of the investigation of a single-dwelling parcel—included project coordination; assessment of parcel for potentially buried cultural deposits; authoring of cultural resources project report. April 2000.

Enhanced Cultural Resource Survey and Evaluation for the Reiss Residence Project, La Jolla, California: Project manager/director of the investigation of a single-dwelling parcel—included project coordination; assessment of parcel for potentially buried cultural deposits; authoring of cultural resources project report. March-April 2000.

Salvage Mitigation of a Portion of Site SDM-W-95 (CA-SDI-211) for the Poinsettia Shores Santalina Development Project and Caltrans, Carlsbad, California: Project archaeologist/ director—included direction of field crews; development and completion of data recovery program; management of artifact collections cataloging and curation; data synthesis and authoring of cultural resources project report in prep. December 1999-January 2000.

Survey and Testing of Two Prehistoric Cultural Resources for the Airway Truck Parking Project, Otay Mesa, California: Project archaeologist/director—included direction of field crews; development and completion of testing recovery program; assessment of site for significance based on CEQA guidelines; authoring of cultural resources project report, in prep. December 1999-January 2000.

Cultural Resources Phase I and II Investigations for the Tin Can Hill Segment of the Immigration and Naturalization Services Triple Fence Project Along the International Border, San Diego County, California: Project manager/director for a survey and testing of a prehistoric quarry site along the border—NRHP eligibility assessment; project coordination and budgeting; direction of field crews; feature recordation; meeting and coordinating with U.S. Army Corps of Engineers; co-authoring of cultural resources project report. December 1999-January 2000.

Mitigation of a Prehistoric Cultural Resource for the Westview High School Project for the City of San Diego, California: Project archaeologist/ director—included direction of field crews; development and completion of data recovery program including collection of material for specialized faunal and botanical analyses; assessment of sites for significance based on CEQA guidelines; management of artifact collections cataloging and curation; data synthesis; co-authoring of cultural resources project report, in prep. October 1999-January 2000.

Mitigation of a Prehistoric Cultural Resource for the Otay Ranch SPA-One West Project for the City of Chula Vista, California: Project archaeologist/director—included direction of field crews; development of data recovery program; management of artifact collections cataloging and curation; assessment of

site for significance based on CEQA guidelines; data synthesis; authoring of cultural resources project report, in prep. September 1999-January 2000.

Monitoring of Grading for the Herschel Place Project, La Jolla, California: Project archaeologist/monitor—included monitoring of grading activities associated with the development of a single-dwelling parcel. September 1999.

Survey and Testing of a Historic Resource for the Osterkamp Development Project, Valley Center, California: Project archaeologist/ director—included direction of field crews; development and completion of data recovery program; budget development; assessment of site for significance based on CEQA guidelines; management of artifact collections cataloging and curation; data synthesis; authoring of cultural resources project report. July-August 1999.

Survey and Testing of a Prehistoric Cultural Resource for the Proposed College Boulevard Alignment Project, Carlsbad, California: Project manager/director —included direction of field crews; development and completion of testing recovery program; assessment of site for significance based on CEQA guidelines; management of artifact collections cataloging and curation; data synthesis; authoring of cultural resources project report, in prep. July-August 1999.

Survey and Evaluation of Cultural Resources for the Palomar Christian Conference Center Project, Palomar Mountain, California: Project archaeologist—included direction of field crews; assessment of sites for significance based on CEQA guidelines; management of artifact collections cataloging and curation; data synthesis; authoring of cultural resources project report. July-August 1999.

Survey and Evaluation of Cultural Resources at the Village 2 High School Site, Otay Ranch, City of Chula Vista, California: Project manager/director —management of artifact collections cataloging and curation; assessment of site for significance based on CEQA guidelines; data synthesis; authoring of cultural resources project report. July 1999.

Cultural Resources Phase I, II, and III Investigations for the Immigration and Naturalization Services Triple Fence Project Along the International Border, San Diego County, California: Project manager/director for the survey, testing, and mitigation of sites along border—supervision of multiple field crews, NRHP eligibility assessments, Native American consultation, contribution to Environmental Assessment document, lithic and marine shell analysis, authoring of cultural resources project report. August 1997-January 2000.

Phase I, II, and III Investigations for the Scripps Poway Parkway East Project, Poway California: Project archaeologist/project director—included recordation and assessment of multicomponent prehistoric and historic sites; direction of Phase II and III investigations; direction of laboratory analyses including prehistoric and historic collections; curation of collections; data synthesis; coauthorship of final cultural resources report. February 1994; March-September 1994; September-December 1995.

Archaeological Evaluation of Cultural Resources Within the Proposed Corridor for the San Elijo Water Reclamation System Project, San Elijo, California: Project manager/director —test excavations; direction of artifact identification and analysis; graphics production; coauthorship of final cultural resources report. December 1994-July 1995.

Evaluation of Cultural Resources for the Environmental Impact Report for the Rose Canyon Trunk Sewer Project, San Diego, California: Project manager/Director —direction of test excavations; identification and analysis of prehistoric and historic artifact collections; data synthesis; co-authorship of final cultural resources report, San Diego, California. June 1991-March 1992.

## Reports/Papers

---

Author, coauthor, or contributor to over 2,500 cultural resources management publications, a selection of which are presented below.

- 2015 An Archaeological/Historical Study for the Safari Highlands Ranch Project, City of Escondido, County of San Diego.
- 2015 A Phase I and II Cultural Resources Assessment for the Decker Parcels II Project, Planning Case No. 36962, Riverside County, California.
- 2015 A Phase I and II Cultural Resources Assessment for the Decker Parcels I Project, Planning Case No. 36950, Riverside County, California.
- 2015 Cultural Resource Data Recovery and Mitigation Monitoring Program for Site SDI-10,237 Locus F, Everly Subdivision Project, El Cajon, California.
- 2015 Phase I Cultural Resource Survey for the Woodward Street Senior Housing Project, City of San Marcos, California (APN 218-120-31).
- 2015 An Updated Cultural Resource Survey for the Box Springs Project (TR 33410), APNs 255-230-010, 255-240-005, 255-240-006, and Portions of 257-180-004, 257-180-005, and 257-180-006.
- 2015 A Phase I and II Cultural Resource Report for the Lake Ranch Project, TR 36730, Riverside County, California.
- 2015 A Phase II Cultural Resource Assessment for the Munro Valley Solar Project, Inyo County, California.
- 2014 Cultural Resources Monitoring Report for the Diamond Valley Solar Project, Community of Winchester, County of Riverside.
- 2014 National Historic Preservation Act Section 106 Compliance for the Proposed Saddleback Estates Project, Riverside County, California.
- 2014 A Phase II Cultural Resource Evaluation Report for RIV-8137 at the Toscana Project, TR 36593, Riverside County, California.
- 2014 Cultural Resources Study for the Estates at Del Mar Project, City of Del Mar, San Diego, California (TTM 14-001).
- 2014 Cultural Resources Study for the Aliso Canyon Major Subdivision Project, Rancho Santa Fe, San Diego County, California.
- 2014 Cultural Resources Due Diligence Assessment of the Ocean Colony Project, City of Encinitas.
- 2014 A Phase I and Phase II Cultural Resource Assessment for the Citrus Heights II Project, TTM 36475, Riverside County, California.
- 2013 A Phase I Cultural Resource Assessment for the Modular Logistics Center, Moreno Valley, Riverside County, California.

- 2013 A Phase I Cultural Resources Survey of the Ivey Ranch Project, Thousand Palms, Riverside County, California.
- 2013 Cultural Resources Report for the Emerald Acres Project, Riverside County, California.
- 2013 A Cultural Resources Records Search and Review for the Pala Del Norte Conservation Bank Project, San Diego County, California.
- 2013 An Updated Phase I Cultural Resources Assessment for Tentative Tract Maps 36484 and 36485, Audie Murphy Ranch, City of Menifee, County of Riverside.
- 2013 El Centro Town Center Industrial Development Project (EDA Grant No. 07-01-06386); Result of Cultural Resource Monitoring.
- 2013 Cultural Resources Survey Report for the Renda Residence Project, 9521 La Jolla Farms Road, La Jolla, California.
- 2013 A Phase I Cultural Resource Study for the Ballpark Village Project, San Diego, California.
- 2013 Archaeological Monitoring and Mitigation Program, San Clemente Senior Housing Project, 2350 South El Camino Real, City of San Clemente, Orange County, California (CUP No. 06-065; APN-060-032-04).
- 2012 Mitigation Monitoring Report for the Los Peñasquitos Recycled Water Pipeline.
- 2012 Cultural Resources Report for Menifee Heights (Tract 32277).
- 2012 A Phase I Cultural Resource Study for the Altman Residence at 9696 La Jolla Farms Road, La Jolla, California 92037.
- 2012 Mission Ranch Project (TM 5290-1/MUP P87-036W3): Results of Cultural Resources Monitoring During Mass Grading.
- 2012 A Phase I Cultural Resource Study for the Payan Property Project, San Diego, California.
- 2012 Phase I Archaeological Survey of the Rieger Residence, 13707 Durango Drive, Del Mar, California 92014, APN 300-369-49.
- 2011 Mission Ranch Project (TM 5290-1/MUP P87-036W3): Results of Cultural Resources Monitoring During Mass Grading.
- 2011 Mitigation Monitoring Report for the 1887 Viking Way Project, La Jolla, California.
- 2011 Cultural Resource Monitoring Report for the Sewer Group 714 Project.
- 2011 Results of Archaeological Monitoring at the 10th Avenue Parking Lot Project, City of San Diego, California (APNs 534-194-02 and 03).
- 2011 Archaeological Survey of the Pelberg Residence for a Bulletin 560 Permit Application; 8335 Camino Del Oro; La Jolla, California 92037 APN 346-162-01-00 .
- 2011 A Cultural Resources Survey Update and Evaluation for the Robertson Ranch West Project and an Evaluation of National Register Eligibility of Archaeological sites for Sites for Section 106 Review (NHPA).
- 2011 Mitigation Monitoring Report for the 43rd and Logan Project.

- 2011 Mitigation Monitoring Report for the Sewer Group 682 M Project, City of San Diego Project #174116.
- 2011 A Phase I Cultural Resource Study for the Nooren Residence Project, 8001 Calle de la Plata, La Jolla, California, Project No. 226965.
- 2011 A Phase I Cultural Resource Study for the Keating Residence Project, 9633 La Jolla Farms Road, La Jolla, California 92037.
- 2010 Mitigation Monitoring Report for the 15th & Island Project, City of San Diego; APNs 535-365-01, 535-365-02 and 535-392-05 through 535-392-07.
- 2010 Archaeological Resource Report Form: Mitigation Monitoring of the Sewer and Water Group 772 Project, San Diego, California, W.O. Nos. 187861 and 178351.
- 2010 Pottery Canyon Site Archaeological Evaluation Project, City of San Diego, California, Contract No. H105126.
- 2010 Archaeological Resource Report Form: Mitigation Monitoring of the Racetrack View Drive Project, San Diego, California; Project No. 163216.
- 2010 A Historical Evaluation of Structures on the Butterfield Trails Property.
- 2010 Historic Archaeological Significance Evaluation of 1761 Haydn Drive, Encinitas, California (APN 260-276-07-00).
- 2010 Results of Archaeological Monitoring of the Heller/Nguyen Project, TPM 06-01, Poway, California.
- 2010 Cultural Resource Survey and Evaluation Program for the Sunday Drive Parcel Project, San Diego County, California, APN 189-281-14.
- 2010 Archaeological Resource Report Form: Mitigation Monitoring of the Emergency Garnet Avenue Storm Drain Replacement Project, San Diego, California, Project No. B10062
- 2010 An Archaeological Study for the 1912 Spindrift Drive Project
- 2009 Cultural Resource Assessment of the North Ocean Beach Gateway Project City of San Diego #64A-003A; Project #154116.
- 2009 Archaeological Constraints Study of the Morgan Valley Wind Assessment Project, Lake County, California.
- 2008 Results of an Archaeological Review of the Helen Park Lane 3.1-acre Property (APN 314-561-31), Poway, California.
- 2008 Archaeological Letter Report for a Phase I Archaeological Assessment of the Valley Park Condominium Project, Ramona, California; APN 282-262-75-00.
- 2007 Archaeology at the Ballpark. Brian F. Smith and Associates, San Diego, California. Submitted to the Centre City Development Corporation.
- 2007 Result of an Archaeological Survey for the Villages at Promenade Project (APNs 115-180-007-3, 115-180-049-1, 115-180-042-4, 115-180-047-9) in the City of Corona, Riverside County.
- 2007 Monitoring Results for the Capping of Site CA-SDI-6038/SDM-W-5517 within the Katzer Jamul Center Project; P00-017.
- 2006 Archaeological Assessment for The Johnson Project (APN 322-011-10), Poway, California.

- 2005 Results of Archaeological Monitoring at the El Camino Del Teatro Accelerated Sewer Replacement Project (Bid No. K041364; WO # 177741; CIP # 46-610.6.
- 2005 Results of Archaeological Monitoring at the Baltazar Draper Avenue Project (Project No. 15857; APN: 351-040-09).
- 2004 TM 5325 ER #03-14-043 Cultural Resources.
- 2004 An Archaeological Survey and an Evaluation of Cultural Resources at the Salt Creek Project. Report on file at Brian F. Smith and Associates.
- 2003 An Archaeological Assessment for the Hidden Meadows Project, San Diego County, TM 5174, Log No. 99-08-033. Report on file at Brian F. Smith and Associates.
- 2003 An Archaeological Survey for the Manchester Estates Project, Coastal Development Permit #02-009, Encinitas, California. Report on file at Brian F. Smith and Associates.
- 2003 Archaeological Investigations at the Manchester Estates Project, Coastal Development Permit #02-009, Encinitas, California. Report on file at Brian F. Smith and Associates.
- 2003 Archaeological Monitoring of Geological Testing Cores at the Pacific Beach Christian Church Project. Report on file at Brian F. Smith and Associates.
- 2003 San Juan Creek Drilling Archaeological Monitoring. Report on file at Brian F. Smith and Associates.
- 2003 Evaluation of Archaeological Resources Within the Spring Canyon Biological Mitigation Area, Otay Mesa, San Diego County, California. Brian F. Smith and Associates, San Diego, California.
- 2002 An Archaeological/Historical Study for the Otay Ranch Village 13 Project (et al.). Brian F. Smith and Associates, San Diego, California.
- 2002 An Archaeological/Historical Study for the Audie Murphy Ranch Project (et al.). Brian F. Smith and Associates, San Diego, California.
- 2002 Results of an Archaeological Survey for the Remote Video Surveillance Project, El Centro Sector, Imperial County, California. Brian F. Smith and Associates, San Diego, California.
- 2002 A Cultural Resources Survey and Evaluation for the Proposed Robertson Ranch Project, City of Carlsbad. Brian F. Smith and Associates, San Diego, California.
- 2002 Archaeological Mitigation of Impacts to Prehistoric Site SDI-7976 for the Eastlake III Woods Project, Chula Vista, California. Brian F. Smith and Associates, San Diego, California.
- 2002 An Archaeological/Historical Study for Tract No. 29777, Menifee West GPA Project, Perris Valley, Riverside County. Brian F. Smith and Associates, San Diego, California.
- 2002 An Archaeological/Historical Study for Tract No. 29835, Menifee West GPA Project, Perris Valley, Riverside County. Brian F. Smith and Associates, San Diego, California.
- 2001 An Archaeological Survey and Evaluation of a Cultural Resource for the Moore Property, Poway. Brian F. Smith and Associates, San Diego, California.
- 2001 An Archaeological Report for the Mitigation, Monitoring, and Reporting Program at the Water and Sewer Group Job 530A, Old Town San Diego. Brian F. Smith and Associates, San Diego, California.

- 2001 A Cultural Resources Impact Survey for the High Desert Water District Recharge Site 6 Project, Yucca Valley. Brian F. Smith and Associates, San Diego, California.
- 2001 Archaeological Mitigation of Impacts to Prehistoric Site SDI-13,864 at the Otay Ranch SPA-One West Project. Brian F. Smith and Associates, San Diego, California.
- 2001 A Cultural Resources Survey and Site Evaluations at the Stewart Subdivision Project, Moreno Valley, County of San Diego. Brian F. Smith and Associates, San Diego, California.
- 2000 An Archaeological/Historical Study for the French Valley Specific Plan/EIR, French Valley, County of Riverside. Brian F. Smith and Associates, San Diego, California.
- 2000 Results of an Archaeological Survey and the Evaluation of Cultural Resources at The TPM#24003–Lawson Valley Project. Brian F. Smith and Associates, San Diego, California.
- 2000 Archaeological Mitigation of Impacts to Prehistoric Site SDI-5326 at the Westview High School Project for the Poway Unified School District. Brian F. Smith and Associates, San Diego, California.
- 2000 An Archaeological/Historical Study for the Meniffee Ranch Project. Brian F. Smith and Associates, San Diego, California.
- 2000 An Archaeological Survey and Evaluation of Cultural Resources for the Bernardo Mountain Project, Escondido, California. Brian F. Smith and Associates, San Diego, California.
- 2000 A Cultural Resources Impact Survey for the Nextel Black Mountain Road Project, San Diego, California. Brian F. Smith and Associates, San Diego, California.
- 2000 A Cultural Resources Impact Survey for the Rancho Vista Project, 740 Hilltop Drive, Chula Vista, California. Brian F. Smith and Associates, San Diego, California.
- 2000 A Cultural Resources Impact Survey for the Poway Creek Project, Poway, California. Brian F. Smith and Associates, San Diego, California.
- 2000 Cultural Resource Survey and Geotechnical Monitoring for the Mohyi Residence Project. Brian F. Smith and Associates, San Diego, California.
- 2000 Enhanced Cultural Resource Survey and Evaluation for the Prewitt/Schmucker/ Cavadias Project. Brian F. Smith and Associates, San Diego, California.
- 2000 Enhanced Cultural Resource Survey and Evaluation for the Lamont 5 Project. Brian F. Smith and Associates, San Diego, California.
- 2000 Salvage Excavations at Site SDM-W-95 (CA-SDI-211) for the Poinsettia Shores Santalina Development Project, Carlsbad, California. Brian F. Smith and Associates, San Diego, California.
- 2000 Enhanced Cultural Resource Survey and Evaluation for the Reiss Residence Project, La Jolla, California. Brian F. Smith and Associates, San Diego, California.
- 2000 Enhanced Cultural Resource Survey and Evaluation for the Tyrian 3 Project, La Jolla, California. Brian F. Smith and Associates, San Diego, California.
- 2000 A Report for an Archaeological Evaluation of Cultural Resources at the Otay Ranch Village Two SPA, Chula Vista, California. Brian F. Smith and Associates, San Diego, California.
- 2000 An Archaeological Evaluation of Cultural Resources for the Airway Truck Parking Project, Otay Mesa, County of San Diego. Brian F. Smith and Associates, San Diego, California.



- 2000 Results of an Archaeological Survey and Evaluation of a Resource for the Tin Can Hill Segment of the Immigration and Naturalization and Immigration Service Border Road, Fence, and Lighting Project, San Diego County, California. Brian F. Smith and Associates, San Diego, California.
- 1999 An Archaeological Survey of the Home Creek Village Project, 4600 Block of Home Avenue, San Diego, California. Brian F. Smith and Associates, San Diego, California.
- 1999 An Archaeological Survey for the Sgobassi Lot Split, San Diego County, California. Brian F. Smith and Associates, San Diego, California.
- 1999 An Evaluation of Cultural Resources at the Otay Ranch Village 11 Project. Brian F. Smith and Associates, San Diego, California.
- 1999 An Archaeological/Historical Survey and Evaluation of a Cultural Resource for The Osterkamp Development Project, Valley Center, California. Brian F. Smith and Associates, San Diego, California.
- 1999 An Archaeological Survey and Evaluation of Cultural Resources for the Palomar Christian Conference Center Project, Palomar Mountain, California. Brian F. Smith and Associates, San Diego, California.
- 1999 An Archaeological Survey and Evaluation of a Cultural Resource for the Proposed College Boulevard Alignment Project. Brian F. Smith and Associates, San Diego, California.
- 1999 Results of an Archaeological Evaluation for the Anthony's Pizza Acquisition Project in Ocean Beach, City of San Diego (with L. Pierson and B. Smith). Brian F. Smith and Associates, San Diego, California.
- 1996 An Archaeological Testing Program for the Scripps Poway Parkway East Project. Brian F. Smith and Associates, San Diego, California.
- 1995 Results of a Cultural Resources Study for the 4S Ranch. Brian F. Smith and Associates, San Diego, California.
- 1995 Results of an Archaeological Evaluation of Cultural Resources Within the Proposed Corridor for the San Elijo Water Reclamation System. Brian F. Smith and Associates, San Diego, California.
- 1994 Results of the Cultural Resources Mitigation Programs at Sites SDI-11,044/H and SDI-12,038 at the Salt Creek Ranch Project. Brian F. Smith and Associates, San Diego, California.
- 1993 Results of an Archaeological Survey and Evaluation of Cultural Resources at the Stallion Oaks Ranch Project. Brian F. Smith and Associates, San Diego, California.
- 1992 Results of an Archaeological Survey and the Evaluation of Cultural Resources at the Ely Lot Split Project. Brian F. Smith and Associates, San Diego, California.
- 1991 The Results of an Archaeological Study for the Walton Development Group Project. Brian F. Smith and Associates, San Diego, California.

# Andrew J. Garrison, M.A., RPA

## Senior Project Archaeologist

Brian F. Smith and Associates, Inc.

14010 Poway Road • Suite A •

Phone: (858) 679-8218 • Fax: (858) 679-9896 • E-Mail: agarrison@bfsa-ca.com



## Education

---

<b>Master of Arts, Public History, University of California, Riverside</b>	<b>2009</b>
<b>Bachelor of Science, Anthropology, University of California, Riverside</b>	<b>2005</b>
<b>Bachelor of Arts, History, University of California, Riverside</b>	<b>2005</b>

## Professional Memberships

---

Register of Professional Archaeologists  
Society for California Archaeology  
Society for American Archaeology  
California Council for the Promotion of History

Society of Primitive Technology  
Lithic Studies Society  
California Preservation Foundation  
Pacific Coast Archaeological Society

## Experience

---

### **Senior Project Archaeologist Brian F. Smith and Associates, Inc.**

**June 2017–Present  
Poway, California**

Project management of all phases of archaeological investigations for local, state, and federal agencies including National Register of Historic Places (NRHP) and California Environmental Quality Act (CEQA) level projects interacting with clients, sub-consultants, and lead agencies. Supervise and perform fieldwork including archaeological survey, monitoring, site testing, comprehensive site records checks, and historic building assessments. Perform and oversee technological analysis of prehistoric lithic assemblages. Author or co-author cultural resource management reports submitted to private clients and lead agencies.

### **Senior Archaeologist and GIS Specialist Scientific Resource Surveys, Inc.**

**2009–2017  
Orange, California**

Served as Project Archaeologist or Principal Investigator on multiple projects, including archaeological monitoring, cultural resource surveys, test excavations, and historic building assessments. Directed projects from start to finish, including budget and personnel hours proposals, field and laboratory direction, report writing, technical editing, Native American consultation, and final report submittal. Oversaw all GIS projects including data collection, spatial analysis, and map creation.

### **Preservation Researcher City of Riverside Modernism Survey**

**2009  
Riverside, California**

Completed DPR Primary, District, and Building, Structure and Object Forms for five sites for a grant-funded project to survey designated modern architectural resources within the City of Riverside.

**Information Officer**  
**Eastern Information Center (EIC), University of California, Riverside**

**2005, 2008–2009**  
**Riverside, California**

Processed and catalogued restricted and unrestricted archaeological and historical site record forms. Conducted research projects and records searches for government agencies and private cultural resource firms.

## Reports/Papers

---

- 2017 A Phase I Cultural Resources Assessment for the Marbella Villa Project, City of Desert Hot Springs, Riverside County, California. Brian F. Smith and Associates, Inc.
- 2017 Phase I Cultural Resources Survey for TTM 37109, City of Jurupa Valley, County of Riverside. Brian F. Smith and Associates, Inc.
- 2017 A Phase I Cultural Resources Survey for the Jefferson & Ivy Project, City of Murrieta, California. Brian F. Smith and Associates, Inc.
- 2017 A Phase I Cultural Resources Assessment for the Nuevo Dollar General Store Project, Riverside County, California. Brian F. Smith and Associates, Inc.
- 2017 A Phase I Cultural Resource Study for the Westmont Project, Encinitas, California. Brian F. Smith and Associates, Inc.
- 2017 A Phase I Cultural Resources Assessment for the Winchester Dollar General Store Project, Riverside County, California. Brian F. Smith and Associates, Inc.
- 2017 Phase I Cultural Resource Assessment for TTM 31810 (42.42 acres) Predico Properties Olive Grove Project. Scientific Resource Surveys, Inc.
- 2016 John Wayne Airport Jet Fuel Pipeline and Tank Farm Archaeological Monitoring Plan. Scientific Resource Surveys, Inc. On file at the County of Orange, California.
- 2016 Phase I Cultural Resources Assessment: All Star Super Storage City of Menifee Project, 2015-156. Scientific Resource Surveys, Inc. On file at the Eastern Information Center, University of California, Riverside.
- 2016 Historic Resource Assessment for 220 South Batavia Street, Orange, CA 92868 Assessor's Parcel Number 041-064-4. Scientific Resource Surveys, Inc. Submitted to the City of Orange as part of Mills Act application.
- 2015 Historic Resource Report: 807-813 Harvard Boulevard, Los Angeles. Scientific Resource Surveys, Inc. On file at the South Central Coastal Information Center, California State University, Fullerton.
- 2015 Exploring a Traditional Rock Cairn: Test Excavation at CA-SDI-13/RBLI-26: The Rincon Indian Reservation, San Diego County, California. Scientific Resource Surveys, Inc.
- 2015 Class III Scientific Resource Surveys, Inc. Survey for The Lynx Cat Granite Quarry and Water Valley Road Widening Project County of San Bernardino, California, Near the Community of Hinkley. Scientific Resource Surveys, Inc. On file at the South Central Coastal Information Center, California State University, Fullerton.

- 2014 Archaeological Phase I: Cultural Resource Survey of the South West Quadrant of Fairview Park, Costa Mesa. Scientific Resource Surveys, Inc. On file at the South Central Coastal Information Center, California State University, Fullerton.
- 2014 Archaeological Monitoring Results: The New Los Angeles Federal Courthouse. Scientific Resource Surveys, Inc. On file at the South Central Coastal Information Center, California State University, Fullerton.
- 2012 Bolsa Chica Archaeological Project Volume 7, Technological Analysis of Stone Tools, Lithic Technology at Bolsa Chica: Reduction Maintenance and Experimentation. Scientific Resource Surveys, Inc.
- 2010 Phase II Cultural Resources Report Site CA=RIV-2160 PM No. 35164. Scientific Resource Surveys, Inc. On file at the Eastern Information Center, University of California, Riverside.
- 2009 Riverside Modernism Context Survey, contributing author. Available online at the City of Riverside.

## Presentations

---

- 2017 "Repair and Replace: Lithic Production Behavior as Indicated by the Debitage Assemblage from CA-MRP-283 the Hackney Site." Presented at the Society for California Archaeology Annual Meeting, Fish Camp, California.
- 2016 "Bones, Stones, and Shell at Bolsa Chica: A Ceremonial Relationship?" Presented at the Society for California Archaeology Annual Meeting, Ontario, California.
- 2016 "Markers of Time: Exploring Transitions in the Bolsa Chica Assemblage." Presented at the Society for California Archaeology Annual Meeting, Ontario, California.
- 2016 "Dating Duress: Understanding Prehistoric Climate Change at Bolsa Chica." Presented at the Society for California Archaeology Annual Meeting, Ontario, California.
- 2015 "Successive Cultural Phasing Of Prehistoric Northern Orange County, California." Presented at the Society for California Archaeology Annual Meeting, Redding, California.
- 2015 "Southern California Cogged Stone Replication: Experimentation and Results." Presented at the Society for California Archaeology Annual Meeting, Redding, California.
- 2015 "Prehistoric House Keeping: Lithic Analysis of an Intermediate Horizon House Pit." Presented at the Society for California Archaeology Annual Meeting, Redding, California.
- 2015 "Pits and Privies: The Use and Disposal of Artifacts from Historic Los Angeles." Presented at the Society for California Archaeology Annual Meeting, Redding, California.
- 2015 "Grooving in the Past: A Demonstration of the Manufacturing of OGR beads and a look at Past SRS, Inc. Replicative Studies." Demonstration of experimental manufacturing techniques at the January meeting of The Pacific Coast Archaeological Society, Irvine, California.

- 2014 "From Artifact to Replication: Examining *Olivella* Grooved Bead Manufacturing." Presented at the Society for California Archaeology Annual Meeting, Visalia, California.
- 2014 "New Discoveries from an Old Collection: Comparing Recently Identified OGR Beads to Those Previously Analyzed from the Encino Village Site." Presented at the Society for California Archaeology Annual Meeting, Visalia, California.
- 2012 Bolsa Chica Archaeology: Part Seven: Culture and Chronology. Lithic demonstration of experimental manufacturing techniques at the April meeting of The Pacific Coast Archaeological Society, Irvine, California.
- 2012 "Expedient Flaked Tools from Bolsa Chica: Exploring the Lithic Technological Organization." Presented at the Society for California Archaeology Annual Meeting, San Diego, California.
- 2012 "Utilitarian and Ceremonial Ground Stone Production at Bolsa Chica Identified Through Production Tools." Presented at the Society for California Archaeology Annual Meeting, San Diego, California.
- 2012 "Connecting Production Industries at Bolsa Chica: Lithic Reduction and Bead Manufacturing." Presented at the Society for California Archaeology Annual Meeting, San Diego, California.
- 2011 Bolsa Chica Archaeology: Part Four: Mesa Production Industries. Co-presenter at the April meeting of The Pacific Coast Archaeological Society, Irvine, California.
- 2011 "Hammerstones from Bolsa Chica and Their Relationship towards Site Interpretation." Presented at the Society for California Archaeology Annual Meeting, Rohnert Park, California.
- 2011 "Exploring Bipolar Reduction at Bolsa Chica: Debitage Analysis and Replication." Presented at the Society for California Archaeology Annual Meeting, Rohnert Park, California.

**X. ATTACHMENT B**

**Project Maps:**

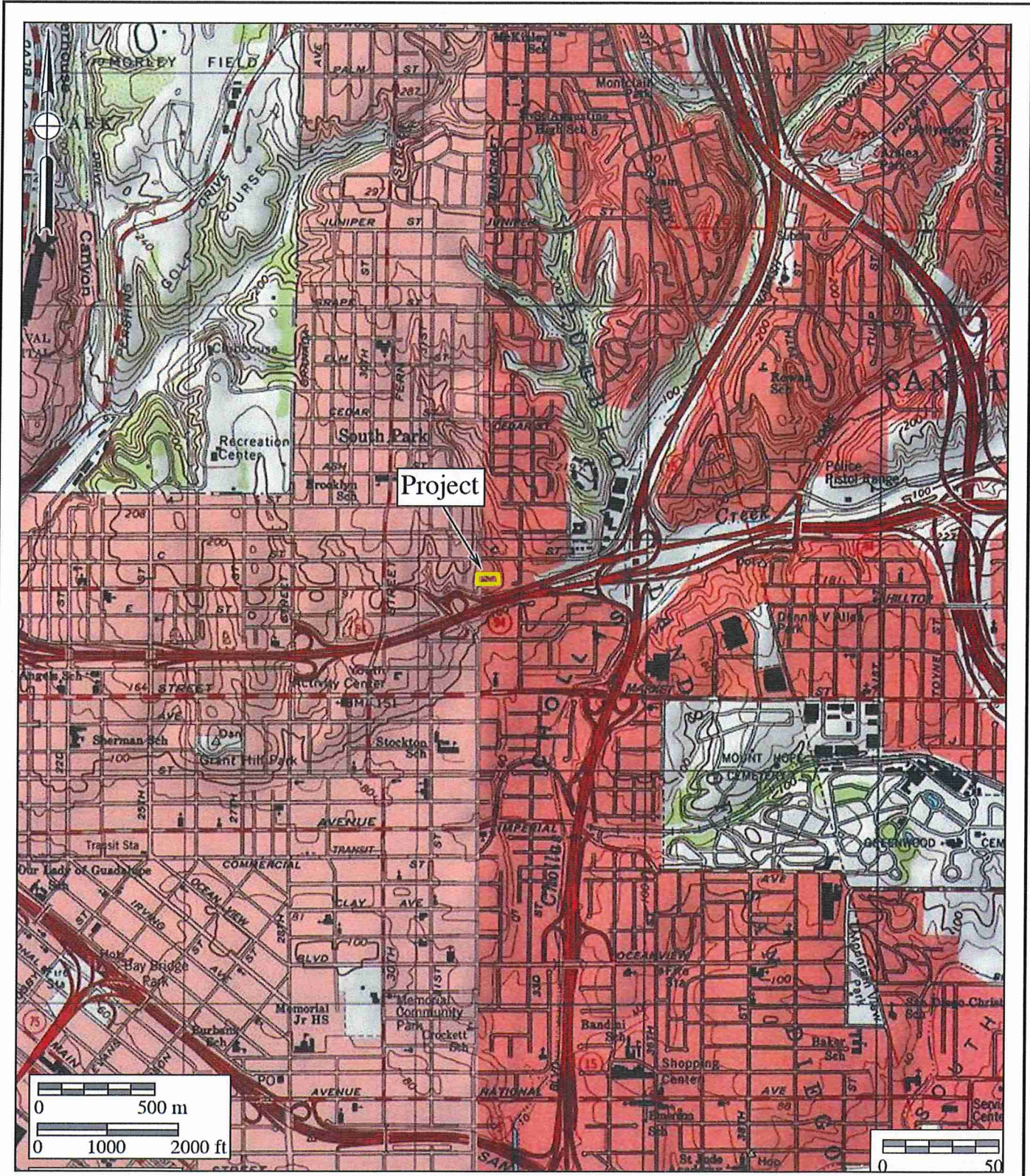
**General Location Map  
USGS Project Location Map  
City 800' Project Location Map  
Project Development Map**



**Figure 1**  
**General Location Map**  
 The 32nd and Broadway Project

DeLorme (1:250,000)





**Figure 2**

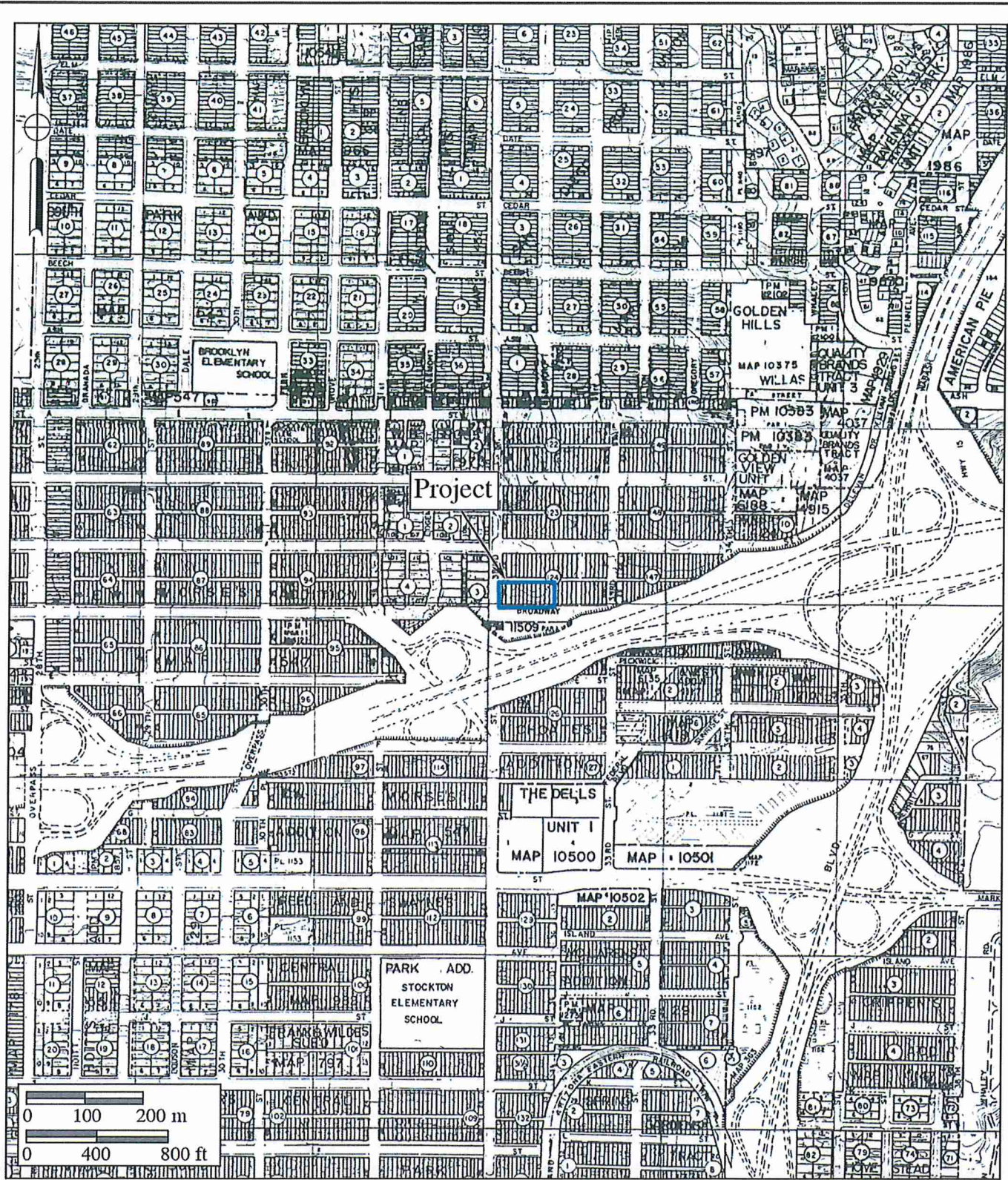
**Project Location Map**

The 32nd and Broadway Project

USGS Point Loma and National City Quadrangles (7.5 minute series)







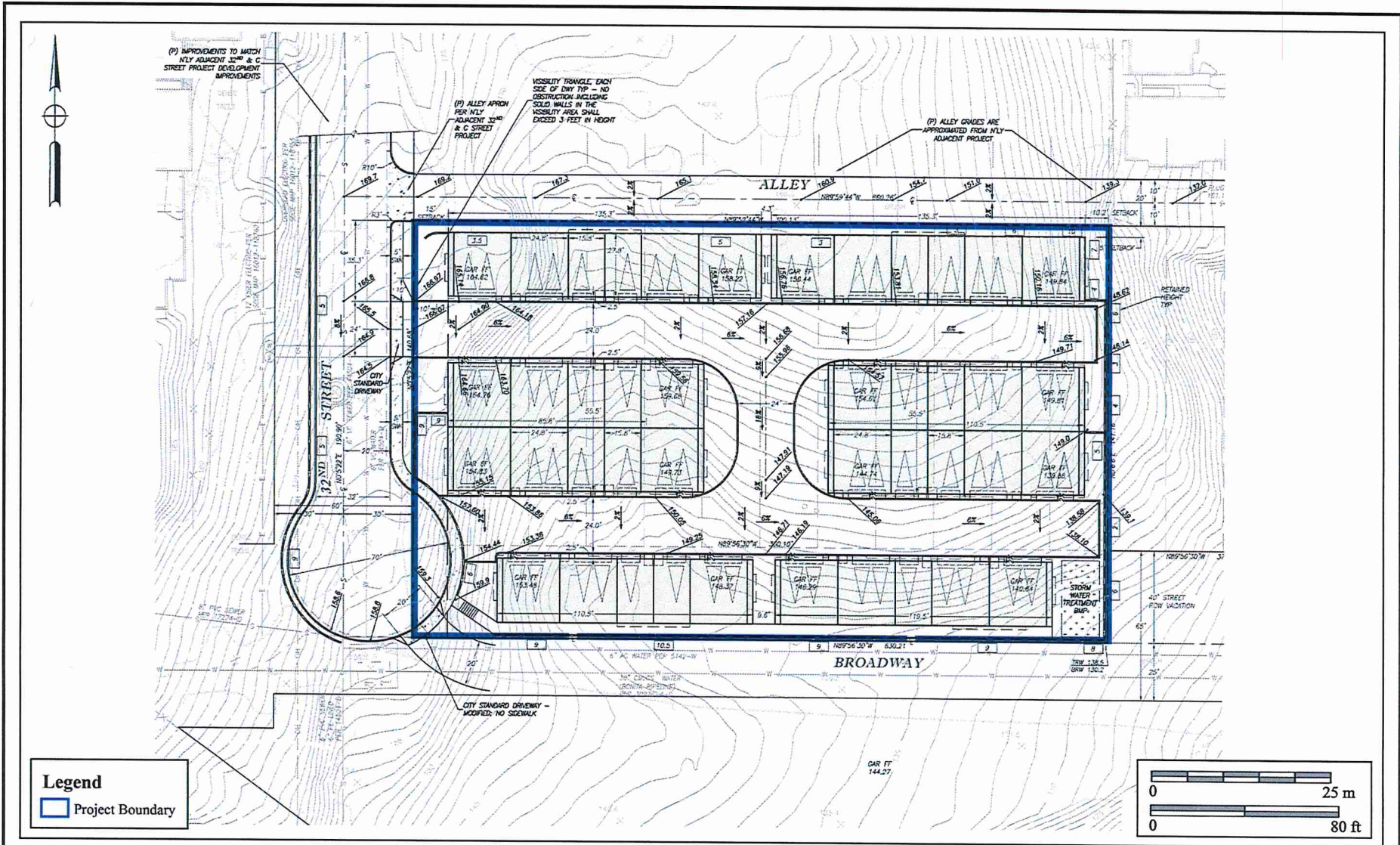
**Figure 3**

**Project Location Map**

The 32nd and Broadway Project

Shown on The City of San Diego 1" to 800' Scale Engineering Map





**Figure 4**  
**Project Development Map**  
 The 32nd and Broadway Project

**XI. CONFIDENTIAL APPENDIX**

**Archaeological Records Search Results  
NAHC Sacred Lands File Search Results**

*(Deleted for Public Review; Bound Separately)*