

**Department of
Conservation and
Development**

30 Muir Road
Martinez, CA 94553

Phone: 1-855-323-2626

**Contra
Costa
County**



John Kopchik
Director

Aruna Bhat
Deputy Director

Jason Crapo
Deputy Director

Maureen Toms
Deputy Director

Amalia Cunningham
Assistant Deputy Director

October 14, 2021

**NOTICE OF AVAILABILITY OF A DRAFT ENVIRONMENTAL IMPACT REPORT
FOR THE
PHILLIPS 66 RODEO RENEWED PROJECT**

State Clearinghouse# 2020120330

County File No. CDLP20-02040

Pursuant to the State of California Public Resources Code and the “Guidelines for Implementation of the California Environmental Quality Act of 1970” as amended to date, this is to advise you that the Community Development Division of the Department of Conservation and Development of Contra Costa County has prepared an Environmental Impact Report for the following project:

PROJECT TITLE: Phillips 66 Rodeo Renewed Project

APPLICANT: Phillips 66
Attn: Don Bristol, Ph. (510) 245-5825
1380 San Pablo Avenue
Rodeo, CA 94572

LOCATION: The Rodeo Refinery is located at 1380 San Pablo Avenue in Rodeo, California, and comprises approximately 1,100 acres of land. The main components of the Project would be located within the 495-acre developed area of the property northwest of Interstate 80 (I-80). This area is referred to as the Rodeo Site. The Rodeo Site is currently covered by a mixture of impervious surfaces associated with process equipment, parking areas, roads, and other pervious surfaces. The remaining portion of the Rodeo Refinery, southeast of I-80, consists of a tank farm, the Carbon Plant Site, and undeveloped land that serves as a buffer zone.

Primary access to the Rodeo Refinery, used by refinery support trucks and workers, is provided by Cummings Skyway between I-80 and the Rodeo Site’s north gate. Secondary access is from San Pablo Avenue, which runs parallel to and a short distance inland from the waterfront from which several roads and entry gates lead into various areas of the Rodeo Site. San Pablo Avenue is a four-lane arterial that connects numerous East Bay communities between

Oakland, approximately 18 miles south of Rodeo, and the Carquinez Bridge in Crockett, approximately 2 miles northeast of Rodeo.

Because the Project would discontinue processing crude oil at the Rodeo Refinery, other sites owned and operated by Phillips 66 located throughout the state would be affected. Therefore, the Project consists of activities at the following four sites (see attached site maps):

- Rodeo Site (1380 San Pablo Ave, Rodeo, CA 94572) —described above, refers to the 495-acre area within the Rodeo Refinery where the main Project activities would occur.
- Carbon Plant Site (2101 Franklin Canyon Rd, Rodeo, CA 94572) — refers to the current location of the Carbon Plant in Franklin Canyon (within the 1,100-acre Rodeo Refinery). Under the Project, the Carbon Plant would no longer be necessary and would be demolished.
- Santa Maria Site (2555 Willow Rd, Arroyo Grande, CA 93420) — refers to the Santa Maria Refinery, including the applicant-owned buffer land, located near Nipomo, San Luis Obispo County. The Santa Maria Site would no longer be necessary to provide semi-refined feedstock to the Rodeo Refinery and would be demolished under the Project.
- Pipeline Sites—refers to four pipelines (i.e., Lines 100, 200, 300, and 400) that provide crude oil from the Santa Maria Site to the Rodeo Refinery. The pipeline sites would cease to be used under the Project.

PROJECT DESCRIPTION:

Phillips 66 proposes to modify the existing Rodeo Refinery into a repurposed facility that would process renewable feedstocks into renewable diesel fuel, renewable components for blending with other transportation fuels, and renewable fuel gas. Repurposing of the Rodeo Refinery would assist California in meeting its stated goals of reducing greenhouse gas emissions and ultimately transitioning to carbon neutrality. It would also provide a mechanism for compliance with California's Low-Carbon Fuel Standard and Cap and Trade programs and the federal Renewable Fuels Standard, while continuing to meet regional market demand for transportation fuels.

Once the Project is in operation, no crude oil would be processed at the Rodeo Refinery. As the Rodeo Refinery transitions from a facility that refines petroleum feedstocks to one that processes renewable feedstocks, the refinery may temporarily increase deliveries of crude oil and gas oil feedstocks by tanker vessel, resulting in increased annual vessel calls to the Marine Terminal compared to baseline conditions. This temporary increase of crude and gas oil feedstocks at the Marine Terminal would not increase the amount of crude and gas oil that can be processed at the Rodeo Refinery, but it would shift the source of these materials from the Pipeline Sites to the Marine Terminal. The temporary or transitional increase in vessel traffic is estimated to last 7 months in the year prior to Project startup, and would occur parallel to the end of the construction period. No modifications to the Marine Terminal or Marine Oil Terminal Engineering and Maintenance Standards Program are proposed.

Up to 80,000 barrels per day (bpd), on a 12-month rolling average, of renewable feedstocks could arrive at the Rodeo Refinery and would be processed in the proposed Feed Pre-treatment Unit (PTU). The majority

of the time, the feedstocks treated by the PTU would be processed on site to produce renewable fuels. In situations where excess treated feedstock produced by the PTU is not processed onsite, this material could be exported from the Rodeo Refinery via the Marine Terminal. Marine traffic would increase relative to the baseline period. Marine traffic would include tanker vessels and barges used to import renewable feedstocks and gasoline blendstocks, and export renewable fuels and feeds. Baseline vessel traffic consists of 80 tankers of various sizes and 90 barges and is estimated to increase to a total of 201 Handymax tankers and 161 articulated tug barges at full Project operation. No physical changes are needed at the Marine Terminal as part of the Project.

Under the Project, the Rodeo Refinery would supply up to 107,000 bpd (12-month rolling average) of renewable and petroleum-based transportation fuels. The Project would produce up to 55,000 bpd, on a 12-month rolling average basis, of a variety of renewable transportation fuels from renewable feedstocks. The Rodeo Refinery as a whole would produce up to 67,000 bpd, on a 12-month rolling average basis, of renewable fuels. To maintain the current facility capacity to supply regional market demand for transportation fuels, including renewable and conventional fuels, the Rodeo Refinery could receive, blend, and ship up to 40,000 bpd, on a 12-month rolling average, of gasoline and gasoline blendstocks.

The Project has the following objectives:

- Convert the Rodeo Refinery to a renewable transportation fuels production facility;
- Provide/maximize production of renewable fuels to assist California in meeting its goals for renewable energy, greenhouse gas emission reductions, and reduced Carbon Intensity for transportation fuels;
- Convert existing equipment and infrastructure to produce transportation fuels from non-hazardous renewable feedstocks and discontinue the processing of crude oil at the Rodeo Refinery;
- Preserve and protect existing family-wage jobs in Contra Costa County during and after the transition to a renewable transportation fuels production facility;
- Repurpose and reuse the facility's existing equipment capacity, including the Marine Terminal and Rail Butane Loading Rack;
- Preserve marine, rail, and truck offloading facilities to access national/international renewable feedstocks to provide renewable transportation fuels and conventional fuels and conventional fuel components;
- Provide the ability to process a comprehensive range of renewable feedstocks, including treated and untreated feedstocks;
- Maintain the facility's current capacity to supply regional market demand for transportation fuels, including renewable and conventional fuels;
- Ensure California transportation fuel supply needs are met during the transition to a renewable fuels facility by temporarily (approximately 7 months) increasing gas oil and crude deliveries at the Marine Terminal to maintain current transportation fuel production at the Rodeo Refinery;
- Provide a beneficial use for recyclable fats, oil, and grease within the state of California; and
- Provide a mechanism for compliance with the federal Renewable Fuel Standard and the state Low-Carbon Fuel Standard through processing facilities in California.

SITE AND AREA DESCRIPTION:

The Project consists of activities at four sites: Rodeo Site, Carbon Plant, Santa Maria Site, and Pipeline Sites. The Rodeo Refinery, consisting of the Rodeo Site and Carbon Plant Site, is bordered by San Pablo Bay on the north and west, the NuStar Energy tank farm on the northeast, the Bayo Vista residential area of Rodeo to the southwest, and the residential enclave of Tormey, located east and adjacent to the Nustar Energy tank farm. The remaining portion of the Rodeo Refinery, southeast of I-80, consists of a tank farm and undeveloped land that serves as a buffer zone.

The Santa Maria Site is surrounded by a buffer area of open space grassland on most sides. To the north and east are residential communities mixed with heavier commercial uses, such as stockyards and truck storage areas. To the south are agricultural fields and to the west is an open space area that transitions into dunes towards the Pacific Ocean. While there is development in the area, it remains largely dominated by open space with mesa and dune habitats and agricultural fields. Highway 1 skirts around the Santa Maria Site to the north, and moves slightly inland, perpendicular to the coast, and then to the east as it turns back and runs parallel to the coast.

The Pipeline Sites are located throughout the state in San Luis Obispo, Santa Barbara, Kern, Kings, Fresno, Merced, Stanislaus, San Joaquin, Alameda, and Contra Costa Counties. The Project would not involve any physical modifications at the Pipeline Sites.

ENVIRONMENTAL EFFECTS OF THE PROJECT:

This Draft Environmental Impact Report (EIR) has been prepared pursuant to Public Resources Code Section 21080(d) of the California Environmental Quality Act (CEQA) and the CEQA Guidelines. The Draft EIR describes the proposed Project; analyzes and identifies the environmental impacts that may result from the proposed Project; identifies measures to mitigate adverse environmental impacts; and evaluates alternatives to the proposed Project.

The Draft EIR for the proposed Project identified significant impacts that cannot be fully mitigated to less-than-significant levels with implementation of identified mitigation measures. These significant and unavoidable impacts include marine biological resources, hazards, and hydrology and water quality related to marine vessel accidents, and air quality related to rail emissions outside the San Francisco Bay Area Air Basin. The Draft EIR also identifies potentially significant impacts related to: construction-related air emissions, odor; marine biological resources (non-spill related); cultural resources; seismicity; transportation and traffic; and tribal cultural resources. However, mitigation measures are identified for these impacts that ensure the Project will not cause a significant impact on the environment.

WHERE TO REVIEW THE DRAFT EIR:

To help slow the spread of COVID-19 in accordance with the County Health Officer's Shelter Order of March 10, 2021, the Draft EIR can be viewed online at the following link:

www.contracosta.ca.gov/RodeoRenewed

Any sources of information referenced in the Draft EIR can be provided upon request by contacting the project planner, Gary Kupp.

PUBLIC COMMENT PERIOD:

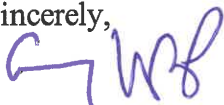
Prior to adoption of the Draft EIR, the County will be accepting comments on the adequacy of the document during a 60-day public comment period; the Draft EIR and a Final EIR may be certified at a future date in a public hearing following the public comment period.

The period for accepting comments on the adequacy of the environmental document will begin on **Monday, October 18, 2021** and extends to **Friday, December 17, 2021 until 4:00 P.M.** Any comments should be in writing and submitted to the following address:

**Gary Kupp, Senior Planner
Community Development Division
Contra Costa County, Department of Conservation and Development
30 Muir Road, Martinez, CA 94553**

OR via email to gary.kupp@dcd.cccounty.us

Sincerely,



Gary Kupp
Senior Planner
(925) 655-2871
gary.kupp@dcd.cccounty.us

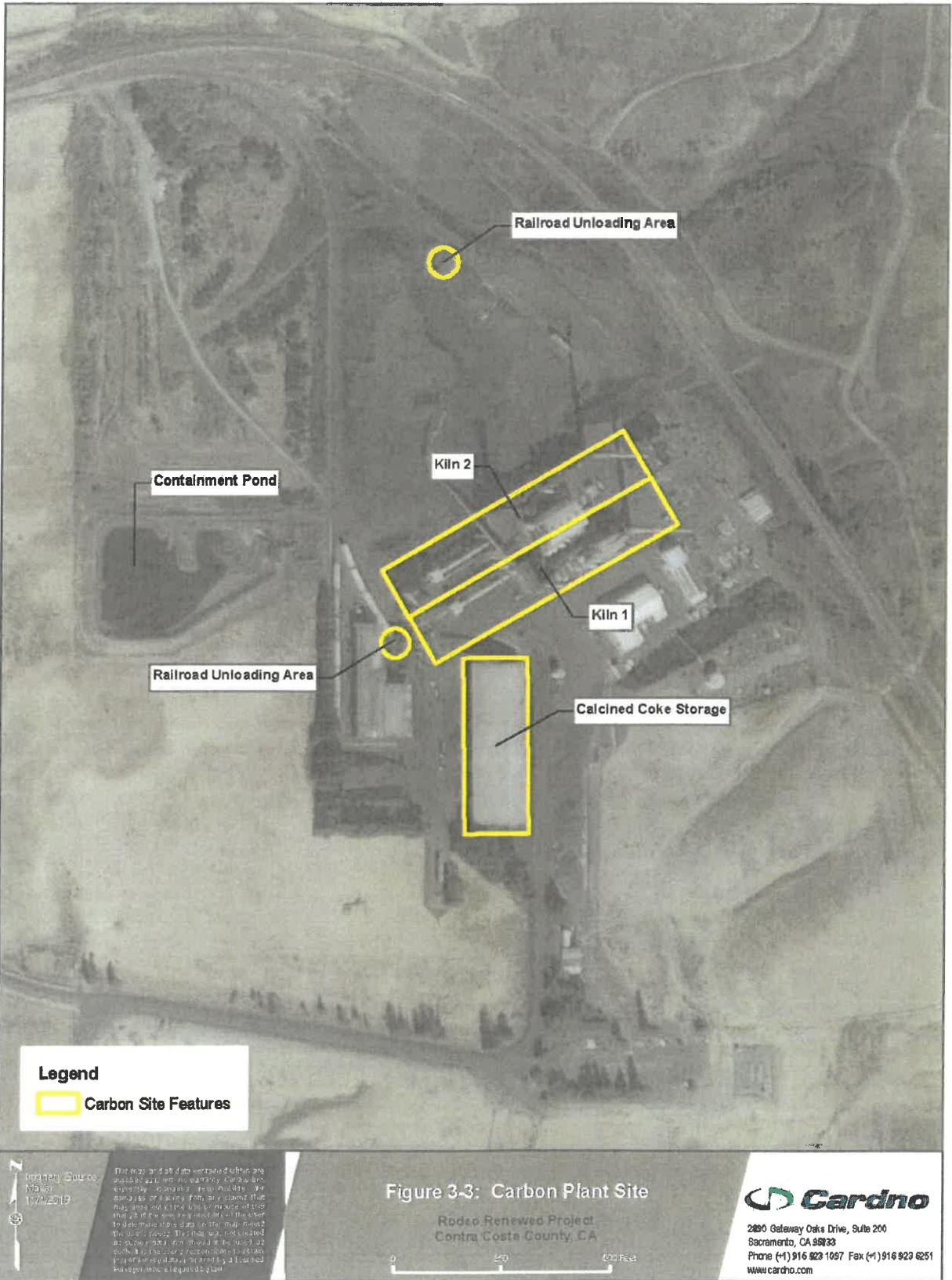
cc: County Clerk's Office (2 copies)
Adjacent Occupants and Property Owners
Notification List

attach: Site Maps

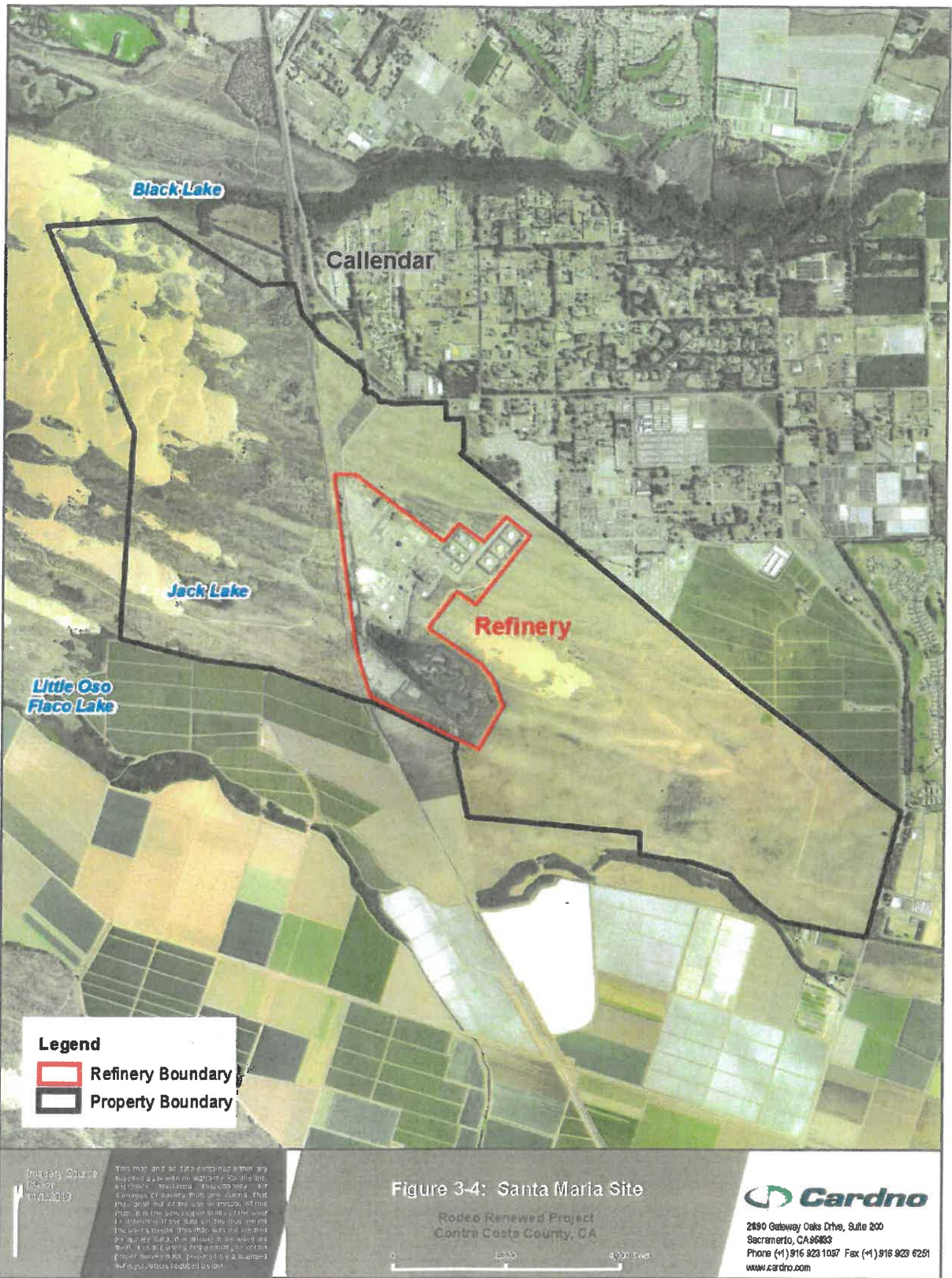


Rodeo Site

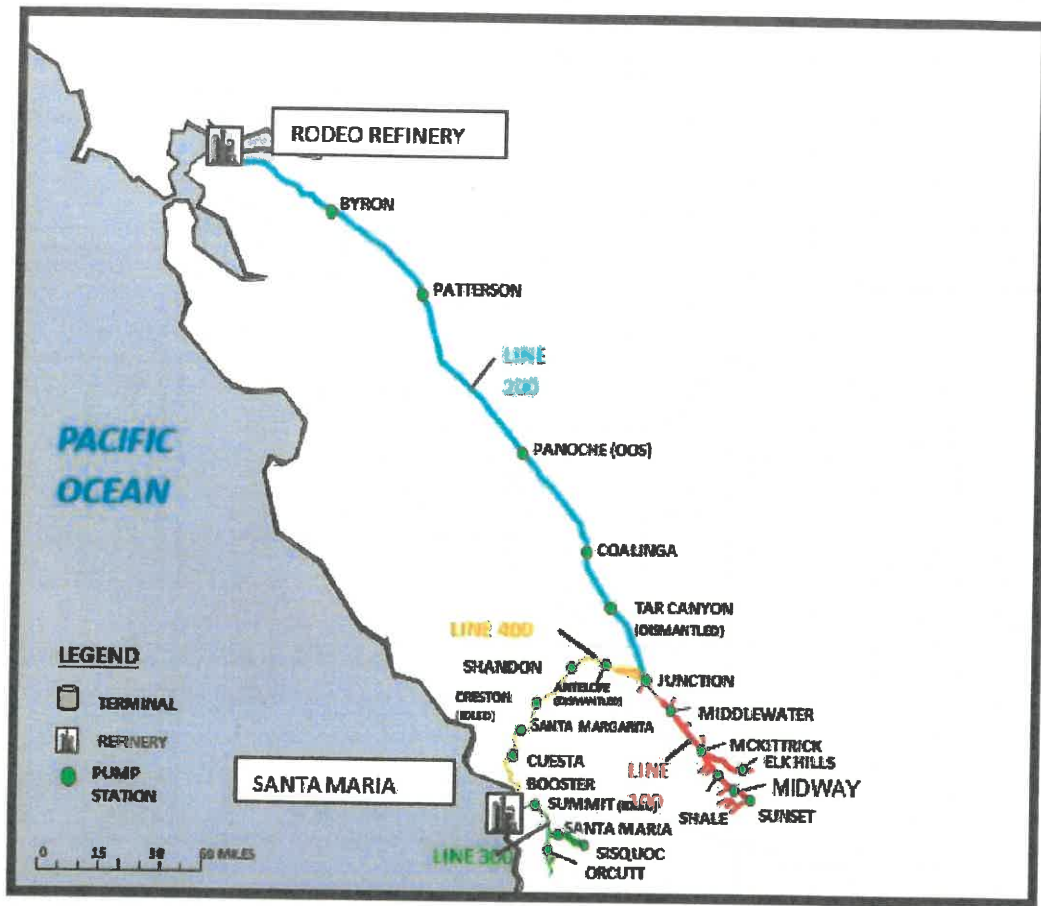
1380 San Pablo Ave, Rodeo, CA 94572



Carbon Plant Site 2101 Franklin Canyon Rd, Rodeo, CA 94572



Santa Maria Site 2555 Willow Rd, Arroyo Grande, CA 93420



This map and all data herein by Cardno are supplied as is with no warranty. Cardno, Inc. or its employees are not responsible for any errors or omissions on this map that may arise from data or information provided to the user. The user is responsible for the use of the data herein for any purpose. The user is responsible for the use of the data herein for any purpose. The user is responsible for the use of the data herein for any purpose. The user is responsible for the use of the data herein for any purpose.

DATE: 11/19/2021 Date Revised: 7/19/2021 Rev: P201 K:\Users\K\Documents\Map\Rodeo_Fig3-5_Pipeline_Sites.mxd
 SHEET: 2021-01-01

Figure 3-5: Pipeline Sites

Rodeo Renewed Project
 Contra Costa County, CA



2880 Gateway Oaks Drive, Suite 200, Sacramento, CA 95833
 Phone (+1) 916 923 1097 Fax (+1) 916 923 6261
 www.cardno.com

Pipeline Sites