

DEPARTMENT OF TRANSPORTATION

DISTRICT 7
100 S. MAIN STREET, SUITE 100
LOS ANGELES, CA 90012
PHONE (213) 897-0362
FAX (213) 897-0360
TTY 711
www.dot.ca.gov



*Making Conservation
a California Way of Life.*

February 4, 2021

Agencies, Organizations, and Individuals
interested in the Eastbound SR-91/Atlantic
Avenue to Cherry Avenue Auxiliary Lane
Improvements Project

File: 07-LA-91 (PM R11.8/R13.2)
Eastbound State Route 91/Atlantic
Avenue to Cherry Avenue Auxiliary
Lane Improvements Project

**Public Hearing Notice and Extension of Comment Period of the Draft Initial
Study/Environmental Assessment, Notice of Intent to Adopt a Mitigated Negative
Declaration**

The California Department of Transportation (Caltrans) District 7, in cooperation with the Los Angeles County Metropolitan Transportation Authority (Metro), and the Gateway Cities Council of Governments, proposes to develop and implement a 0.86-mile auxiliary lane on Eastbound State Route 91 (SR-91) within a 1.4-mile segment from the southbound Interstate 710 (I-710) interchange connector to eastbound SR-91, to Cherry Avenue (Project). The Project Study Area includes Eastbound SR-91 and is located in the City of Long Beach, California. The purpose of the Project is to enhance safety conditions, reduce congestion, and improve freeway operations on both the Eastbound SR-91 mainline and ramps. There are two alternatives under consideration, including a No Build Alternative and a Build Alternative. All project improvements would be completed within State right-of-way. Caltrans is the lead agency under the California Environmental Quality Act and the National Environmental Policy Act.

Caltrans has studied the effects this project may have on the environment and has prepared a Draft Initial Study (IS) with Proposed Mitigated Negative Declaration (MND)/Environmental Assessment (EA) for compliance with the National Environmental Policy Act and California Environmental Quality Act. The IS/EA was circulated for public review on December 17, 2020. The purpose of this notice is to inform the public that a virtual public hearing will be held on February 18, and the comment deadline has been extended from February 1, 2021 to March 1, 2021. This public hearing notice has been mailed to owners or occupants of approximately 600 properties within the area surrounding the project area, including all properties located to the south of East 68th Street, to the north of Artesia Boulevard, to the east of I-710, and to the west of the Union Pacific Railroad located between Cherry and Paramount Avenues.

The Draft IS/EA and proposed MND are available for review online between December 17, 2020 and March 1, 2021 at: <https://www.metro.net/projects/i-605-corridor-hot-spots-program/SR-91->

February 4, 2021
Page 2

[early-action-projects/](#). A Project Fact Sheet and Frequently Asked Questions are available in English and Spanish at the same link shown above.

Caltrans invites you to attend the public hearing at the following date and time via computer or phone using the access information below. You can also submit comments by email or mail any time before the hearing date and after the hearing date with a deadline of March 1, 2021.

Public Hearing Information

The virtual public hearing will be held by computer or phone on **Thursday, February 18, 2021** from 6:00 p.m. to 8:00 p.m. at:

Webinar link: tinyurl.com/j6e22u2t, Passcode: 228047
Dial in by phone: (877) 853-5247 (Toll Free), Webinar ID: 964 0026 4546

The virtual public hearing will include a presentation by the project team followed by public comments. Each speaker will be given a time limit of two minutes. Access to a Spanish translator will be available during the public hearing.

Please submit any comments and suggestions on the Draft IS/EA no later than **March 1, 2021** to:

D07.91AtlanticToCherry@dot.ca.gov

or

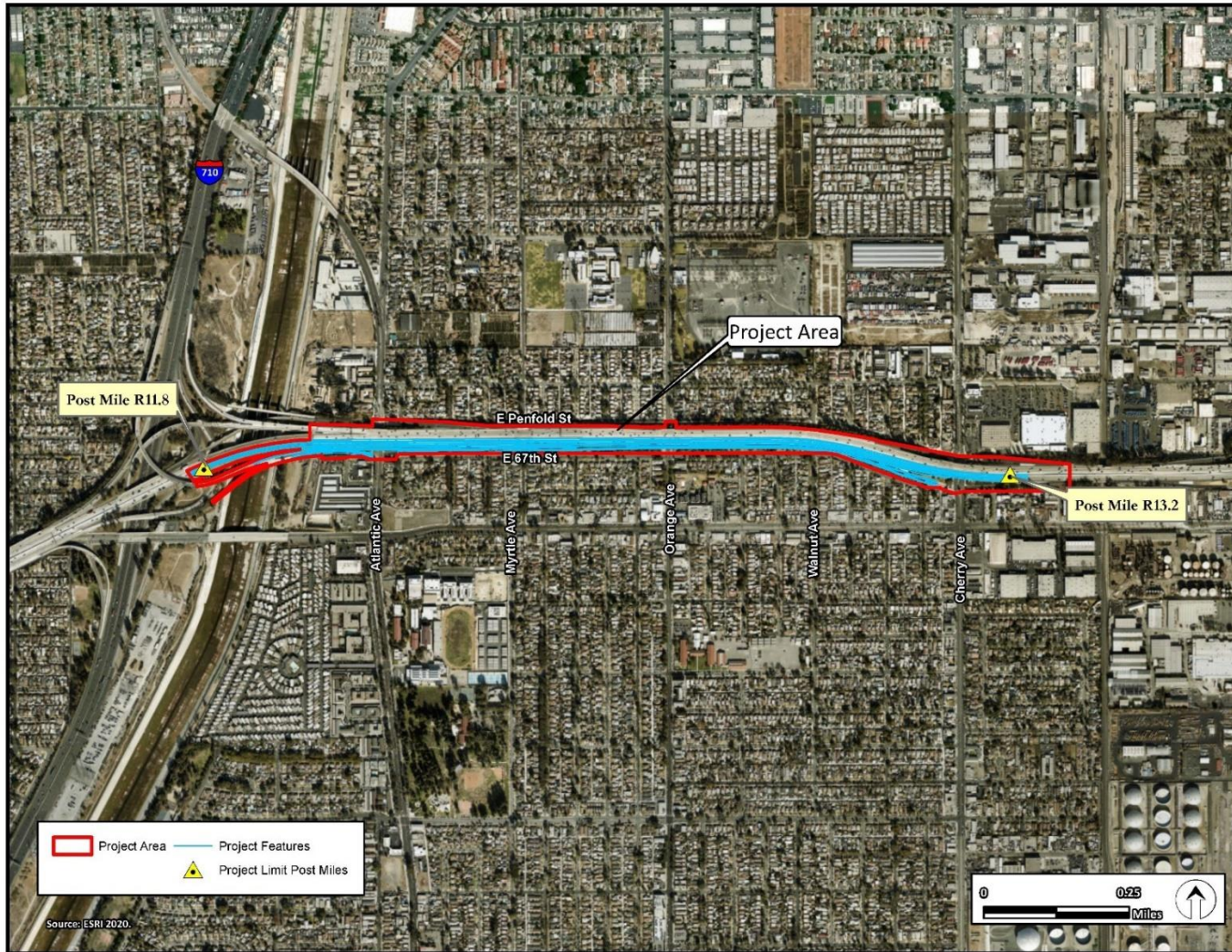
Mr. Ronald Kosinski, Deputy District Director
California Department of Transportation
Division of Environmental Planning
100 South Main Street MS-16A
Los Angeles, CA 90012
Attn: Eastbound SR-91/Atlantic to Cherry Project

If you have any questions or would like additional information, please contact Thoa Le, Senior Environmental Planner, Caltrans District 7 at D07.91AtlanticToCherry@dot.ca.gov or (213) 269-0238. Thank you for your interest in this important transportation project.

Sincerely,



RONALD KOSINSKI
Deputy District Director, Division of Environmental Planning



*Eastbound State Route 91/Antlantic Avenue to Cherry Avenue Auxiliary Lane Improvements Project
Project Study Area*

*"Provide a safe, sustainable, integrated and efficient transportation system
to enhance California's economy and livability"*