



NOTICE OF EXEMPTION

TO:
 Alameda County Clerk
 Alameda County Clerk-Recorder's Office
 1106 Madison Street
 Oakland, CA 94607

FROM: (LEAD AGENCY)
 EAST BAY MUNICIPAL UTILITY DISTRICT
 Office of the Secretary - (510) 287-0404
 375 Eleventh Street, MS 806
 Oakland, CA 94607-4240

Lead Agency is the Project Applicant
 Lead Agency is Public Agency Approving Project
 Lead Agency is Carrying Out Project

PROJECT INFORMATION

- TITLE:** Piedmont Temporary Regulator In-Conduit Hydroelectricity Project
- LOCATION:** *(City, County, and specific location)*
 Piedmont, Alameda County, Near Blair Avenue and Harbord Drive (Attachment A)
- DESCRIPTION:** The project involves the installation of InPipe Energy's InPRV system adjacent to the East Bay Municipal Utility District's (District) Piedmont Temporary Regulator located on the District's property. Additional information is provided in Attachment B.

EXEMPTION FINDING (Check one)

This project is exempt from CEQA because:



- Activity is not a project
- Activity is Ministerial (Sec.21080(b)(1); Guideline 15268)
- Activity is a Declared Emergency (Sec.21080(b)(3); Guideline 15269(a))
- Activity is an Emergency Project (Sec.21080(b)(4); Guideline 15269(b)(c))
- Activity is Categorically Exempt Under Guideline 14 CCR 15311 & 15328
- Activity is Statutorily Exempt Under Guideline _____
- Reasons why project is exempt: The project is exempt under Guideline 15311 since the project involves the construction of minor appurtenant structures. The project is also exempt under Guideline 15328 since the project involves small hydroelectric projects at existing facilities, the project is less than five megawatts, and the project will not change the flow regime of the affected pipeline. The project will have no significant environmental effects relative to Location, Cumulative Impact, Scenic Highways, Significant Effect due to unusual circumstances, Hazardous Waste or Historical Resources, pursuant to Section 15300.2 (b) of the CEQA Guidelines.

APPROVAL BY INITIATING UNIT: 790

<u>11/5/20</u>	<u>Casey J. LeBlanc (CJL)</u>	<u>CJL</u>
1. DATE PREPARED	2. PREPARED BY (initial)	3. REVIEWED BY (Unit Supv. initial)

4. RECOMMENDED BY (Division/Section Manager)		
<u>Casey J. LeBlanc</u>	<u>704</u>	<u>Senior Civil Engineer</u>
5. CONTACT PERSON	MAIL SLOT #	TITLE
		<u>(510) 287-0567</u>
		PHONE

NOTICE OF EXEMPTION APPROVED FOR FILING WITH THE COUNTY CLERK

<u>12/18/20</u>	<u></u>
DATE	DEPARTMENT DIRECTOR
<u>12/24/20</u>	<u></u>
DATE FORWARDED TO COUNTY CLERK	SECRETARY OF THE DISTRICT

ATTACHMENT A

PIEDMONT TEMPORARY REGULATOR IN-CONDUIT HYDROELECTRICITY PROJECT

Figure 1. Project Location

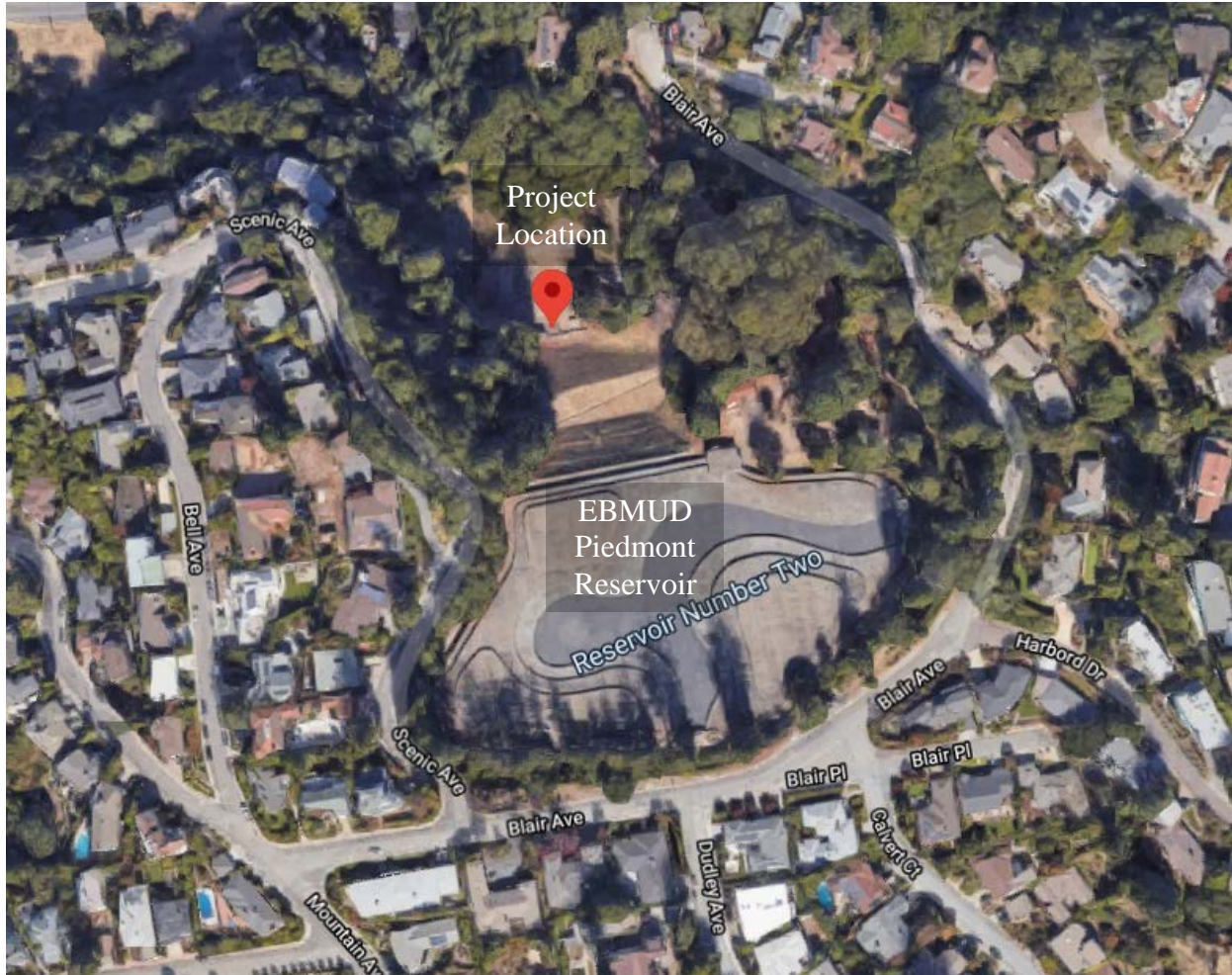


Figure 2. Photo of Project Location

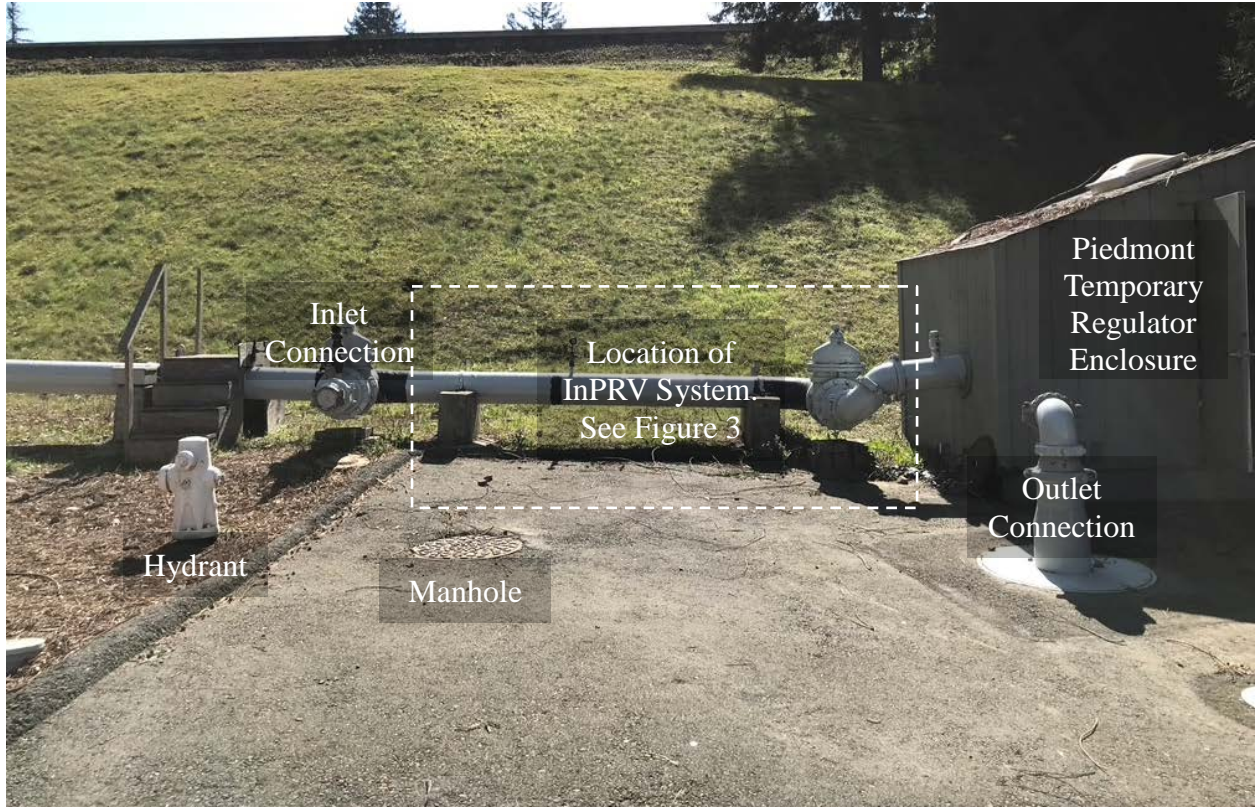
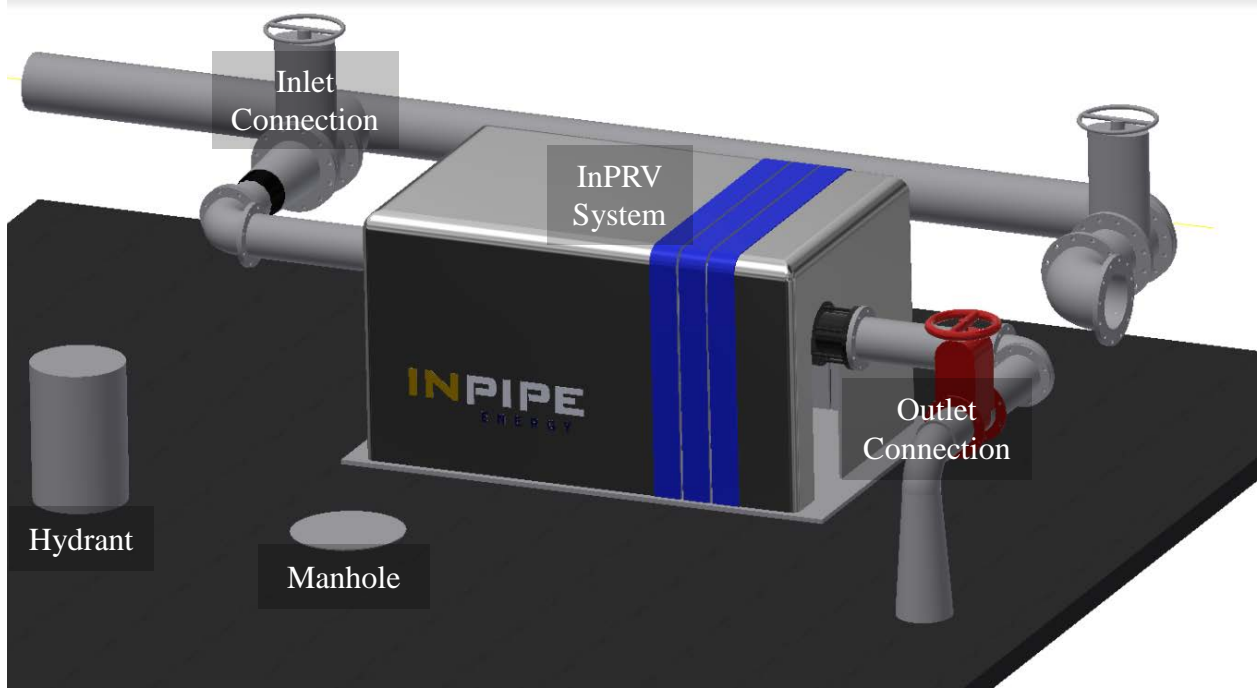


Figure 3. Simulation of InPRV System Adjacent to the Piedmont Temporary Regulator



ATTACHMENT B

PIEDMONT TEMPORARY REGULATOR IN-CONDUIT HYDROELECTRICITY PROJECT

Overview and Background

The East Bay Municipal Utility District (District) owns and operates 86 pressure regulating facilities. These facilities provide drinking water to customers and modulate the water pressure within safe ranges. In pressure zones with pressure regulating facilities, a portion of the electricity used to pump the water to higher elevations can be recaptured through in-conduit hydroelectricity systems like InPipe Energy's InPRV system. This pilot project will provide data to evaluate the costs and the performance of an in-conduit hydroelectricity generation system in the District's water distribution system. The electricity produced by this project will be used to offset the electricity consumed by the Estates Pumping Plant, a District facility located immediately adjacent to the project site.

Project Location

The project site is located on District property in the City of Piedmont in Alameda County. The District's property is located in a residential area bordered by Scenic Avenue and Blair Avenue. The following existing facilities are located on the District's property: Piedmont Reservoir, Estates Pumping Plant, and the Piedmont Temporary Regulator.

Project Characteristics

The InPRV system will be installed adjacent to the District's existing Piedmont Temporary Regulator as shown in Figure 2 of Attachment A. The system will be composed of inlet and outlet piping and valves, a turbine, a flow meter, sensors, and electrical cable and conduits. The system will be housed in an enclosure as shown in Figure 3 of Attachment A. The dimensions of the enclosure will be approximately 13 feet by 5 feet by 5 feet (length by width by height) and the enclosure will be mounted to a concrete pad with the approximate dimensions of 15 feet by 7 feet (length by width). The enclosure will include sound-attenuating material to reduce noise.

Permits and Approvals

No encroachment permit is required for the project. All construction activities will occur within the District's property limits. Any necessary permits from the regulatory agencies will be obtained, to complete the Project.

Schedule and Work Hours

The construction duration is approximately nine months. Construction may begin as early as winter 2021 and may conclude by summer 2022. Typical work hours will be 7 a.m. to 6 p.m., Monday through Friday.

EBMUD Practices and Procedures

Standard construction environmental and safety practices applicable to all District construction projects will be incorporated into the project. These standard practices minimize impacts to the public resulting from District construction projects.